



Commercial
Vehicles

The Transporter



The Transporter.

Professional from every angle.

LOW FUEL CONSUMPTION.

Thanks to BlueMotion Technology across the range.

MOST OFF-ROAD READY VEHICLE IN ITS CLASS.

Thanks to the combination of 4MOTION all-wheel drive and mechanical rear differential lock.

LARGE LOAD COMPARTMENT.

Up to 9.3m³ load compartment volume.

LARGEST NUMBER OF VARIANTS IN ITS CLASS.

Roof heights, wheelbases, and seating packages.

CLEVERLY THOUGHT OUT STORAGE SYSTEM.

Large variety of storage options in the cockpit.

PROVEN VOLKSWAGEN QUALITY.

Durable materials and high-quality workmanship.

When the design for a compact delivery van first emerged in 1947, Volkswagen Commercial Vehicles succeeded in precisely capturing the needs of professionals with the "Bulli". Since then, this concept has grown in versatility with each Transporter generation. On the one hand, this has been achieved through technological advancements. But above all, because for over 65 years the Transporter has been putting into practice exactly that which professionals in a variety of different industries require.

The Transporter is packed full of innovations, which offer solutions to important everyday problems.





Transporter Van shown with optional alloy wheels and second sliding door.

Standard for all Transporter Van model variants.



Exterior

- Halogen headlights
- Daytime running lights (DRL)
- Sliding door, left
- Lifting rear tailgate with window and wiper/washer
- 16-inch or 17-inch steel wheels
- Full sized steel spare wheel

Interior

- Height-adjustable driver's seat with lumbar support
- Leather-wrapped steering wheel, height and reach adjustable
- Cleverly thought out storage system
- Rubber flooring in the driver's compartment
- "Austin" cloth seat upholstery

Function

- Stop/start system
- Bluetooth® phone and audio streaming compatibility
- "Composition Colour" radio system with USB/AUX/SD input
- Steering wheel audio controls
- Cruise Control
- Electronic immobiliser
- Central locking with remote control
- Power windows and heated exterior mirrors
- Manually controlled air conditioning

Safety

- Driver Fatigue Detection*
- Hill-Start Assist
- Multi-Collision Brake (MCB)
- Electronic Stabilisation Programme (ESP)
- Traction Control System (TCS)
- Anti-lock braking system and brake assist
- Driver and front passenger front and side/head airbags
- Reverse Parking Sensors*
- Six lashing eyes (eight for Long Wheelbase)

* Safety technologies are not a substitute for the driver's responsibility of the vehicle.

Additional standard equipment on the Transporter Crewvan.



Exterior

- Sliding door, right
- Slide-opening windows in left and right sliding doors

Interior

- 3-seater bench seat in second row, folding and tipping, removable
- Rubber floor in rear

Standard equipment on the Transporter Single Cab Chassis.



- 2-seater front passenger bench seat

Standard equipment on the Transporter Dual Cab Chassis.



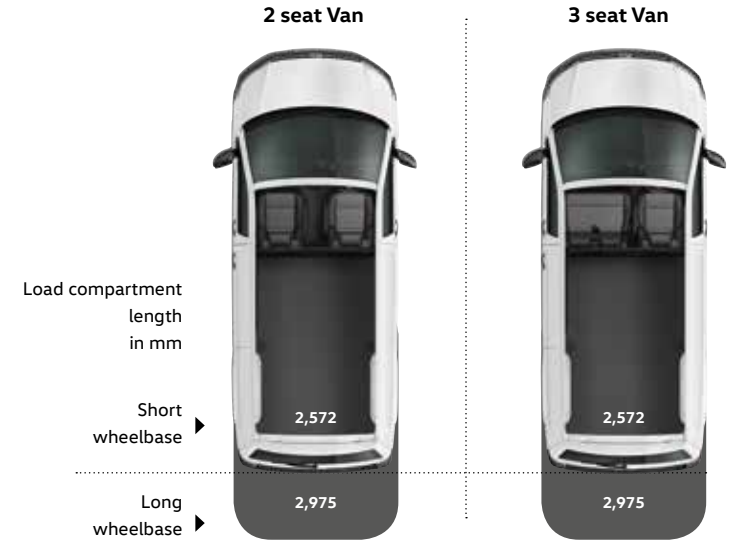
- 3-seater bench seat in the second row
- Two passenger compartment doors with fixed windows






The Transporter Van.

The greatest range of possibilities – for both large and difficult jobs.

The Transporter adapts perfectly to every transport task.

Two wheelbases and three roof variants allow a load compartment volume ranging from 5.8m³ to 9.3m³. The payload can be up to 1.2 t*, while an optional second sliding door simplifies loading and unloading. The driver's compartment can also be equipped to meet the driver's needs. Possible options include seating combinations with two single seats or a front passenger bench seat.



Short wheelbase	Load compartment volume
	5.8 m³ Normal roof
	6.7 m³ Medium roof
Long wheelbase	Load compartment volume
	6.7 m³ Normal roof
	7.8 m³ Medium roof
	9.3 m³ High roof



*Payload is defined as the Gross Vehicle Mass (GVM) minus the Unladen Weight. Payload is the maximum combined weight of occupants, cargo, added structures and tow ball down weight (when towing). GVM must not be exceeded.



01

Overseas models shown.



03



04



05



02

5 seat Crewvan

Load
compartment
length in mmShort
wheelbaseLong
wheelbase

The Transporter Crewvan.

Plenty of space for up to 5 people. And all of their equipment.

Putting your business on the road – all in a day's work for the Transporter Crewvan. It provides space for up to five people, along with plenty of load space, proving its worth day in and day out. The sound-absorbing rubber flooring in the passenger compartment is easy to wash. Plus, dual sliding doors makes it easy for rear passengers to get in and out of the vehicle.



- 01 Lifting tailgate.** The tailgate is a standard feature for all Transporter models with normal and medium roofs. The tailgate's large opening height makes the vehicle easy to load and unload. It also serves as a shelter in wet weather.
- 02 Rear wing doors.** The Transporter with a normal or medium roof can also be fitted with rear wing doors. For long wheelbase vehicles, these are also available with an opening angle of 250 degrees, and locks to secure the doors in the open position. For the high roof version, high rear wing doors come as standard.
- 03 Rubber floor covering.** The load or passenger compartment is available with a washable rubber floor covering, a practical loading edge protective trim, and step lighting.
- Universal floor covering (not illustrated).** The load compartment of the Transporter van can be fitted with a robust universal floor with non-slip surface and cut-outs with flush coverings.
- 04 Lashing eyes.** Depending on the wheelbase, the load compartment is fitted with six or eight adjustable lashing eyes as standard to secure goods using tensioning straps.
- 05 Partition.** A full height partition with window is available.
- Hardboard side panel trim (not illustrated).** The hardboard trim in the passenger and load compartments is especially robust. The hardboard panels are fitted full-height from the floor to the roof frame or half-height in vehicles with window openings.

The Transporter Chassis.

Single and Dual Cab.

The basis on which everything is built.

The Transporter is the only vehicle in its class to offer a chassis with a payload of up to 1,415kg* for a variety of different bodies. The special body of your choice can be secured easily and safely to the extremely robust hat-shaped profile frame with the help of standardised mounting points.

Long wheelbase	Payload*
	Up to 1.4 t Single cab version
	Up to 1.2 t Dual cab



*Payload is defined as the Gross Vehicle Mass (GVM) minus the Unladen Weight. Payload is the maximum combined weight of occupants, cargo, added structures and tow ball down weight (when towing). GVM must not be exceeded.

Dropside Tray.

Optimally prepared for every challenge.

More heavy machinery, more equipment, more manpower. Transporter chassis models are available with a dropside tray, direct from the factory. With a robust load surface, aluminium tray, rear step and retaining cables, it makes the Transporter perfect for any number of tough jobs.



Lashing eyes.
Lashing eyes for securing the load are recessed into the platform, and can be folded flush with the surface.

Overseas models shown.



Interior.

The perfect equipment. Perfectly fitted.

The Transporter has been precisely designed to impress during daily use. The cabin offers numerous storage options to help with the perfect planning of a long working day. The intelligent arrangement of the various storage options, compartments, and holders makes the interior a workplace where everything is in perfect order. Valuables can be stored safely in the lockable glove compartment, documents can be tidily filed away in the A4-size middle compartment, and glasses are readily accessible in the roof compartment. Multiple drinks are held securely in the bottle and cup holders.

And if your job is even more demanding than all that: the medium and high roof model variants also provide additional storage space in the roof. Everything is on hand: when you need it, and the way you need it.

Seats. The driver's seat features height and lumbar adjustment for all-day comfort.

Leather-covered multi-function steering wheel. Adjustable height and reach provide excellent grip. It is also extremely user-friendly. The radio or navigation system (if fitted), your mobile phone or the cruise control can be controlled using buttons on the steering wheel.

Light & Sight package. Designed to improve visibility, this optional package consists of an automatically dimming rear view mirror, which protects against dazzling from traffic to the rear, and a rain sensor, which activates the windscreen wipers. The driving light assistant illuminates the path to the vehicle, providing safety at night.



"Climatic" air conditioning. This semi-automatic air conditioning has an interior sensor, and constantly compares the interior temperature with the desired temperature in the cab. Optional Rear Air Conditioning provides optimal air distribution in the load area.



App-Connect featuring Apple CarPlay®

The innovative infotainment systems.

Thanks to up-to-the-minute technology, you can stay connected while out on the road in your Transporter.

01 Multi-function display. It shows current information such as the time, remaining range outside temperature and average consumption. In conjunction with the optional navigation system, it also shows directional arrows for convenient navigation for all-day comfort.

Mobile phone interface. The Bluetooth® interface enables you to make phone calls safely and conveniently during the journey. It can be controlled via the multi-function display or the radio touch-screen.

02 "Composition Colour" radio system. The system consists of a 12.7 cm (5 inch) TFT colour display with touch screen function, an MP3- and WMA-compatible CD drive, four loudspeakers, an SD-card slot, an AUX-IN interface, a USB port, a Bluetooth® connection for mobile telephones, and a dual tuner with Phase Diversity for optimal radio reception.

03 "Composition Media" radio system. This optional system consists of a 16.5 cm (6.33 inch) TFT colour display, a touch screen with proximity sensor, an MP3- and WMA-compatible CD drive, four loudspeakers, an SD-card slot, an AUX-IN interface, and interface, a USB port, a Bluetooth® connection for mobile telephones, and a dual tuner with Phase Diversity for optimal radio reception. App-Connect* is fitted on all vehicles with this system.

04 "Discover Media" navigation system. In addition to functions of the "Composition Media" radio system, there is a second integrated SD-card slot which is compatible with the SD-card with the map data. Optionally available.

05 App-Connect*. Fitted with "Composition Media" and "Discover Media" systems, App-Connect* lets you integrate your smartphone via a USB port. Compatible with Apple CarPlay®, Android Auto™ and MirrorLink®.

Cutting-edge safety systems.

Prepared to handle almost any situation.

To ensure that every drive ends as stress-free as it begins, the Transporter is equipped with various safety systems, which are activated in critical situations as a preventative measure. New to the onboard standard equipment is the Multi-Collision Braking System. Moments after an accident, the vehicle begins a phased braking action down to 10 km/h in order to prevent secondary collisions. Should an impact nonetheless result, driver, front passenger, and for the first time as standard, side/head airbags provide optimal protection to occupants.



Front Driver and Passenger Airbags.

Driver, front passenger and side/head airbags offer occupants the best possible protection in the event of head-on and side impacts.



Driver Fatigue Detection.

Uses visual and acoustic warning signals to recommend that the driver takes a break as soon as it registers driving behaviour that indicates tiredness.



Anti-Lock Braking System (ABS).

Prevents wheel lock and maintains manoeuvrability.



Brake Assist System.

Registers the speed at which the brake pedal is pressed. During a reflexive or emergency braking action, it ensures that full brake pressure is built up more quickly.



Electronic Stabilisation Programme.

Prevent under- or over-steering via targeted braking of individual wheels.



Traction Control System (TCS).

Prevents wheelspin.



Electronic Differential Lock (EDL).

Distributes the engine torque to the tyres without slippage.



Hill Start Assist.

Prevents the vehicle from rolling back on inclines and makes handling easier when starting up on uphill slopes.



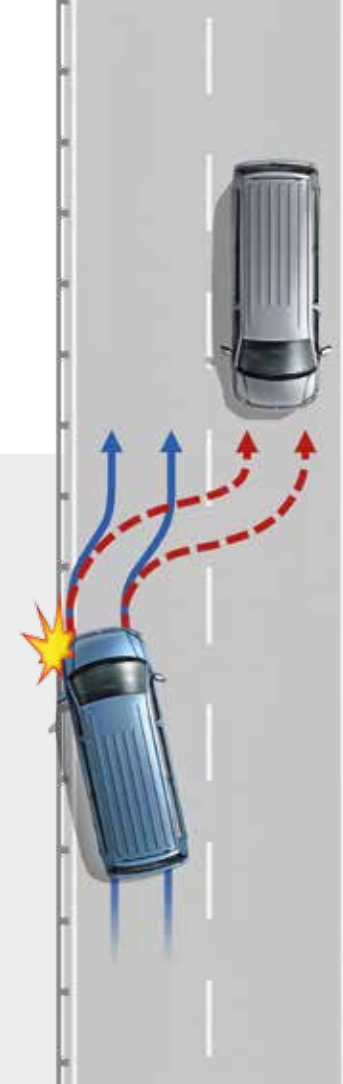
Daytime Running Lights.

Switch on automatically when the ignition is activated and lower the risk of an accident in daylight.



Cruise Control.

As of a speed of 30 km/h, it maintains the set speed depending on uphill and downhill inclines.



Multi-Collision Braking System. Triggers braking after a collision, with the aim of preventing secondary collisions.

The Multi-Collision Braking System activates when two independent sensors detect an accident. After a short delay, the vehicle begins a phased braking action down to 10 km/h, during which the driver can take over at any time.



Rear Park Distance Control. Emits audible warnings when obstacles are detected behind the vehicle when parking, and also provides a visual display of the vehicle's distance from the obstacles (Discover Media shown).



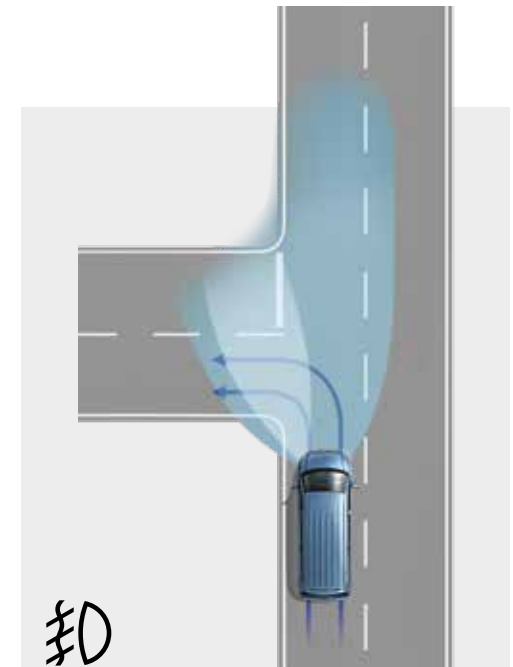
Rear View Camera (RVC). Simplifies parking by showing a limited view of the area behind the vehicle on the display of the radio or navigation system. Additional static guidelines facilitate the parking process. Optional reversing camera only available in conjunction with lifting tailgate (Discover Media shown).

Driver assistance systems.

The Transporter can be fitted with a range of innovative driver assistance systems on request.



Lane Change Assist "Side Assist". Displays a warning signal in the door mirror if one of the system's sensors registers a vehicle in the blind spot when changing lanes. Available on Short Wheelbase Van and Crewvan only.



Fog lights with integrated static cornering light. Ensures optimal visibility in poor weather conditions. The headlight nearest to the corner illuminates the roadside when turning. Optional extra.

Efficient turbo-diesel engines.

The 2.0L turbo-diesel engine is available in two output levels.

2.0L TDI340 (103kW, 340Nm)
Average fuel consumption from 7.2L/100km*

**Bi-turbo
2.0L TDI400 (132kW, 400Nm)**
Average fuel consumption from 7.6L/100km*

The Transporter achieves impressive fuel consumption thanks to the standard BlueMotion Technology (BMT) system.

Start/stop system. After shifting into neutral and releasing the clutch, the engine is switched off automatically, e.g. at red traffic lights. To start the engine again, it is enough to step on the clutch. The stop/start function happens automatically for vehicles with the dual clutch gearbox (DSG).

Regenerative braking (not illustrated). This recharges the vehicle battery during overrun and braking phases, thereby relieving strain on the engine, and reducing fuel consumption.

*Fuel consumption figures according to ADR 81/02 derived from laboratory testing. Factors including but not limited to driving style, road and traffic conditions, environmental influences, vehicle condition and accessories fitted, will in practice in the real world lead to figures which generally differ from those advertised. Advertised figures are meant for comparison amongst vehicles only.



Overseas model shown.

Dual clutch gearbox DSG. The 7-speed dual clutch gearbox DSG permits fully automatic, almost imperceptible gear changing with no interruption in power flow, which results in significantly increased driving comfort. You can choose between normal and sport mode.

The most off-road ready vehicle in its class.

The Transporter has various innovative features that ensure excellent traction, optimal handling and steering response even in difficult driving conditions.



The new generation 4MOTION all-wheel drive. Models with 4MOTION are equipped with the latest generation all-wheel-drive coupling. Advantages include reduced weight, and further enhancement of vehicle handling and dynamics. Available for TDI400 models only.

Mechanical Differential Lock. The mechanical differential lock is optionally available for the rear axle together with the 4MOTION all-wheel drive. This makes starting up in adverse, off-road conditions much easier.

Suspension upgrades. Rough road and heavy duty suspension packages are available for front wheel drive and 4MOTION Transporter models.



Specifications

Engine	2.0 litre TDI340 BlueMotion Technology		2.0 litre TDI400 BlueMotion Technology	
Type	4 cylinder inline turbocharged direct injection diesel with engine Start/Stop system [^]		4 cylinder inline bi-turbo direct injection diesel with engine Start/Stop system [^]	
Max power, kW @ rpm	103 @ 3,500		132 @ 4,000	
Max torque, Nm @ rpm	340 @ 1,750-2,500		400 @ 1,500-2,000	
Cubic capacity, litres/cc	1,968		1,968	
Fuel type (recommended)	Diesel DIN EN 590		Diesel DIN EN 590	
Fuel tank capacity, L	80		80	
Transmission	6 speed manual	7 Speed Direct Shift Gearbox (DSG) with sport mode and Tiptronic function. Includes Coasting feature.	7 Speed Direct Shift Gearbox (DSG) with sport mode and Tiptronic function. Includes Coasting feature.	
Driven wheels	Front Wheel Drive	Front Wheel Drive	Front Wheel Drive	All Wheel Drive
Fuel Consumption ** - Van / Crewvan				
Combined, L/100km	7.2	7.7	7.6	8.3
Fuel Consumption ** - Cab Chassis				
Combined, L/100km		Single Cab 7.2	Dual Cab 7.9	

Weights and Capacities

Weights - Van / Crewvan	SWB Van	SWB Van	TDI400 4MOTION	LWB Van	LWB Van	TDI400 4MOTION	SWB Crewvan	LWB Crewvan
	TDI340	TDI400		TDI340	TDI400		TDI340	TDI340
Gross Vehicle Weight (GVM), kg	3,000	3,000	3,000	3,000	3,000	3,000	3,000	3,000
Unladen Mass ¹ for Standard roof, kg - Manual	1,764	-	-	1,820	-	-	-	-
Payload ² maximum for Standard roof, kg - Manual	1,236	-	-	1,180	-	-	-	-
Unladen Mass ¹ for Standard roof, kg - DSG	1,784	1,820	1,932	1,840	1,876	1,986	1,918	1,981
Payload ² maximum for Standard roof, kg - DSG	1,216	1,180	1,068	1,160	1,124	1,014	1,082	1,019
Towing Capacity, kg								
Braked [‡]	2,500	2,500	2,500	2,500	2,500	2,500	2,500	2,500
Unbraked	750	750	750	750	750	750	750	750
Towbar Load Limit, kg	100	100	100	100	100	100	100	100

Weights - Cab Chassis	LWB Single Cab	LWB Dual Cab
	TDI340	TDI400
Gross Vehicle Weight (GVM), kg	3,000	3,000
Unladen Mass ¹ , kg - DSG	1,584	1,738
Payload ² maximum, kg - DSG	1,416	1,262

Full vehicle specifications are available at www.volkswagen.com.au

[^]The Start/Stop system is designed to reduce fuel consumption and CO2 emissions. It achieves this by automatically switching off the engine while the vehicle is stationary and then starting it again automatically when the driver wants to drive off. There are certain operating conditions where the Start/Stop system is deactivated (e.g. during engine warm-up), please refer to the owner's manual for full operating information.

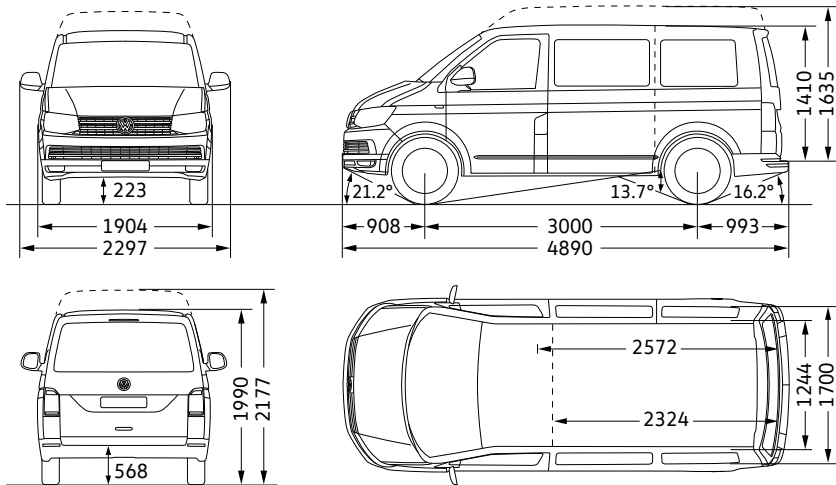
**Fuel consumption figures according to ADR 81/02 derived from laboratory testing. Factors including but not limited to driving style, road and traffic conditions, environmental influences, vehicle condition and accessories fitted, will in practice in the real world lead to figures which generally differ from those advertised. Advertised figures are meant for comparison amongst vehicles only.

1. The Unladen Mass (UM) includes 10L of fuel, vehicle fluids and no occupants. Figures quoted are for base model vehicles only.

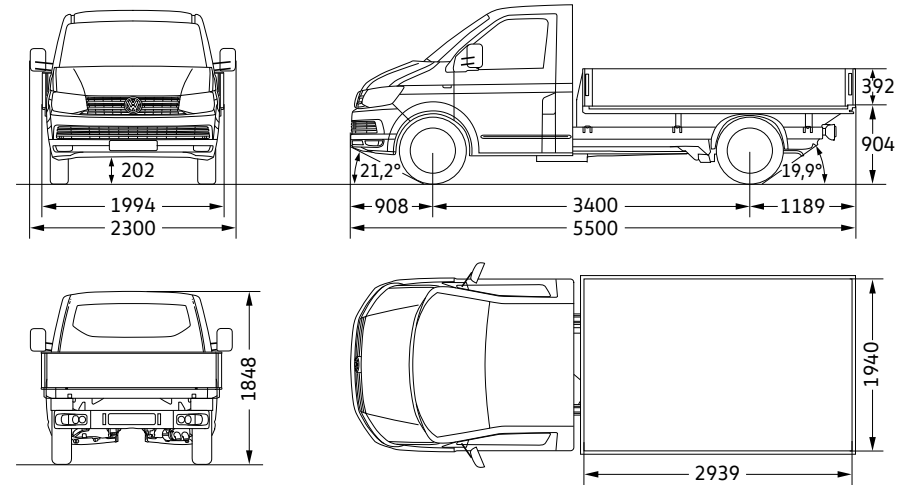
2. Payload figures determined by subtracting 'Unladen Weight' from total 'Gross Vehicle Mass' (GVM). A vehicle's final payload, given the different configurations, can only be determined by weighing the individual vehicle and comparing to the known GVM. Figures quoted are for base model vehicles only.

‡ Please note, Volkswagen Group Australia does not endorse or will not be held liable for any claim, loss or damage arising from the use or fitment of electronic trailer brakes.

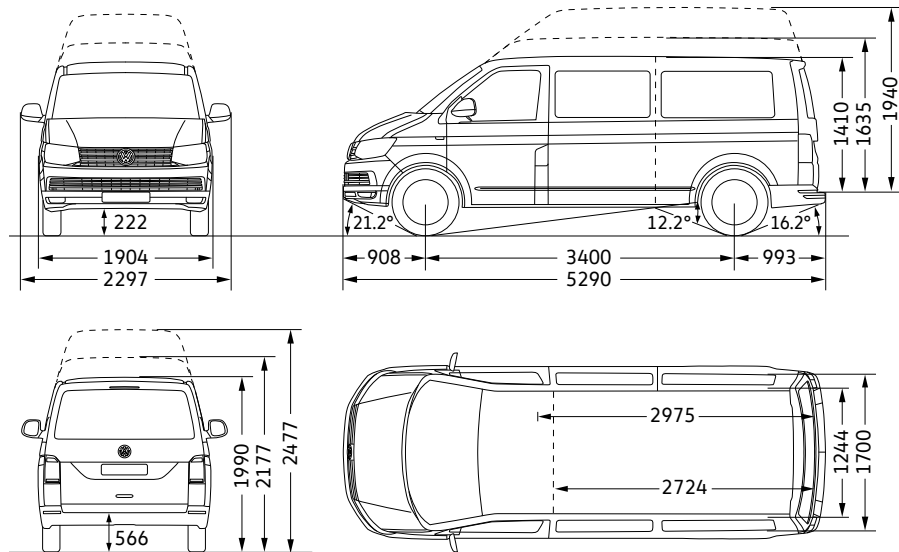
SWB Van



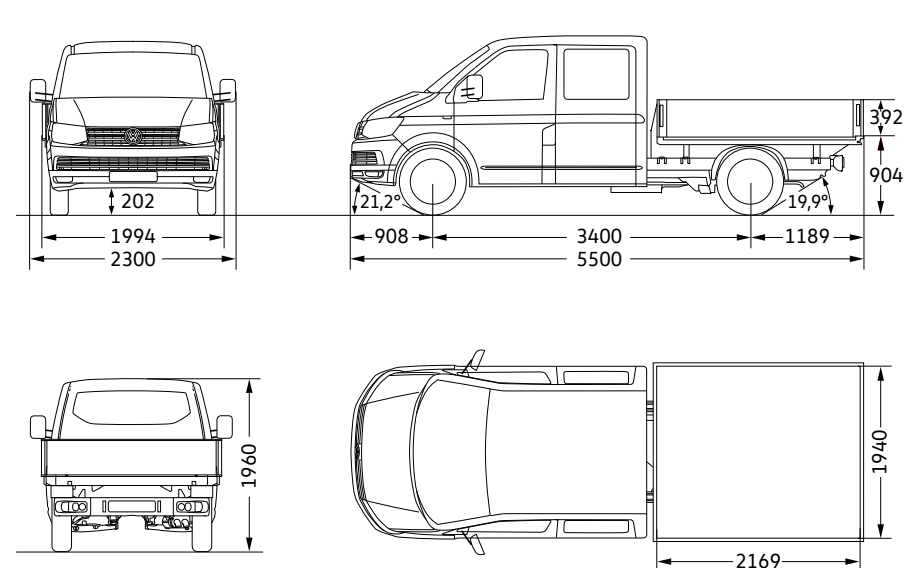
Single Cab with Optional Tray



LWB Van*



Dual Cab with Optional Tray



*High roof not available in conjunction with long wheelbase 4MOTION models. Full vehicle specifications and dimensions are available at www.volkswagen-commercial.com.au

Vehicle dimensions shown in mm.

Volkswagen Accessories.

The Transporter is a highly versatile vehicle that leaves nothing to be desired. If you would like to have a few extras, Volkswagen Accessories offers interesting additional equipment options. These have been developed in cooperation with our Development and Design department, provide top quality, and are only available at your Volkswagen dealer. So everything fits together nicely.

- 01 Cargo Barrier
- 02 Rear Cargo Mat
- 03 Roof Bars
- 04 Rubber Floor Mats
- 05 Slimline Weathershields
- 06 Towbar*



Solid paint finishes



Candy White | Solid paint finish | B4B4



Pure Grey | Solid paint finish | J2J2



Deep Ocean | Solid paint finish | OPOP



Luminous Orange | Solid paint finish | E3E3



Cherry Red | Solid paint finish | 4B4B



Summer Blue | Solid paint finish | E2E2

Metallic and Pearlescent paint finishes



Bamboo Green | Metallic paint finish | 3T3T



Starlight Blue | Metallic paint finish | 3S3S



Acapulco Blue | Metallic paint finish | 2W2W



Curcuma Yellow | Metallic paint finish | 6T6T



Reflex Silver | Metallic paint finish | 8E8E



Indium Grey | Metallic paint finish | X3X3

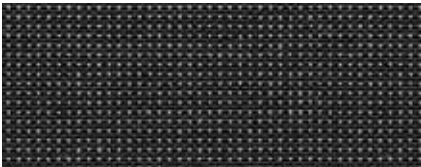


Deep Black | Pearl effect paint finish | 2T2T



Chestnut Brown | Metallic paint finish | H4H4

Seat upholstery



Austin
Cloth seat upholstery | Titanium Black / Moon Rock Grey

Wheels



17" alloy wheel
- DEVONPORT

Optional for Van, Crewvan and Cab Chassis

Please note that Metallic and Pearl Effect paint are optional at extra cost. The print process does not allow for exact reproduction of the exterior or the upholstery colours. Not all colours are available with Cab Chassis variants, optional body coloured bumpers and/or roof height increases. Please contact your Volkswagen Dealer for further information on colours and upholstery combinations.

Volkswagen Choice: Protecting your investment.

Volkswagen Choice

Guaranteed Future Value

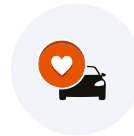
We're out to prove that there still are some guarantees in life. We've developed Volkswagen Choice[^] - a flexible finance solution that provides you with the assurance of knowing exactly what the minimum value of your vehicle will be down the track. With Volkswagen Choice[^], you can enjoy your car without worrying about what the future will bring, providing peace of mind.

At the end of your term,
you can simply choose to:



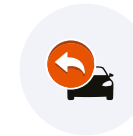
Trade-in

Your existing vehicle and purchase a new Volkswagen under the Volkswagen Choice Program



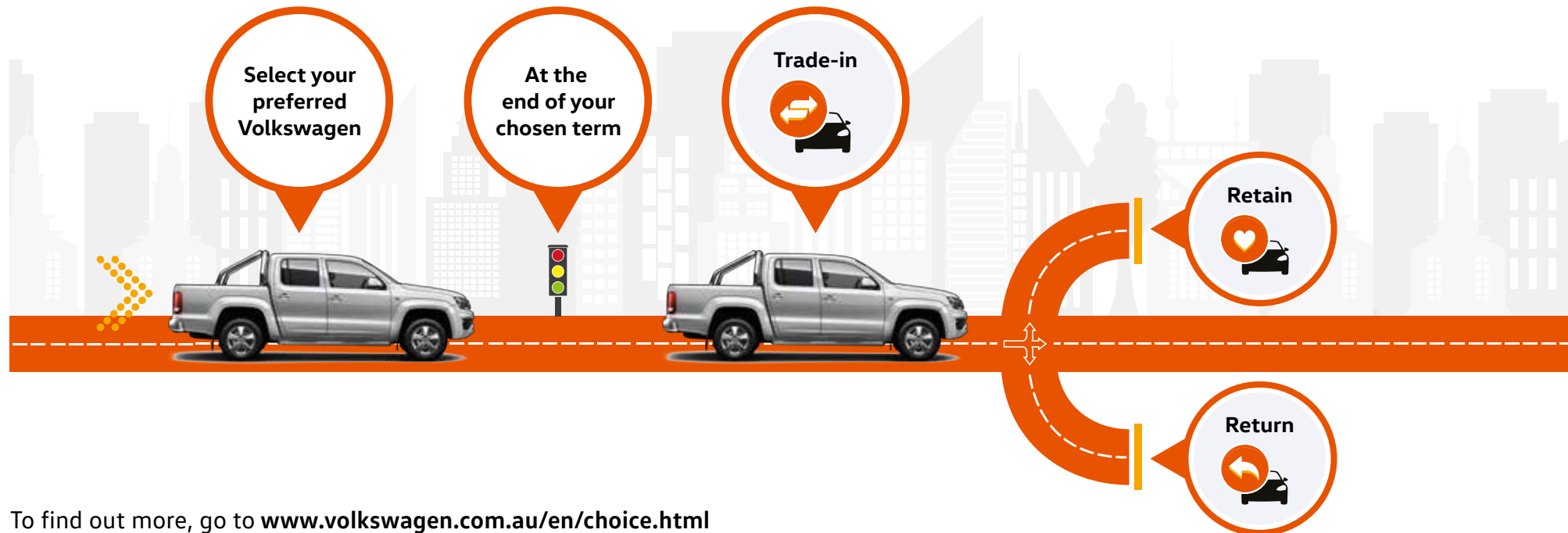
Retain

Make an offer to purchase/ refinance the vehicle



Return

Hand the vehicle back and receive the Guaranteed Future Value[#]



To find out more, go to www.volkswagen.com.au/en/choice.html

[^]The Volkswagen Choice Program consists of an option to require Volkswagen Financial Services to purchase your vehicle at the end of your Volkswagen Financial Services Chattel Mortgage or Consumer Loan for a value (known as the Guaranteed Future Value) determined by Volkswagen Financial Services and set out in your contract. [#]The Guaranteed Future Value is not a representation by Volkswagen Financial Services as to the likely market value of your vehicle as at the end of your contract. The option is available on new and demonstrator Volkswagen vehicles for selected models only. Please verify with your dealership vehicles that are eligible for the program. If vehicles are not returned in an acceptable condition, as defined in the terms and conditions or exceed kilometre restrictions the Guaranteed Future Value will be reduced. See the Volkswagen Choice Fair Wear and Tear Guide for more information on the required conditions and circumstances. The cost of the Volkswagen Choice Program is incorporated into the applicable interest rate. Please read the full terms and conditions. Please consider whether these products and services are appropriate for your circumstances. Before acting on any of the information on this page, please seek independent financial and tax advice. Full terms and conditions are available upon application. Available only to approved applicants of Volkswagen Financial Services. Subject to credit assessment. Fees and charges apply. Fleet, government, rental buyers, hire car and chauffeur companies are excluded. Available at participating Volkswagen dealers. Volkswagen Financial Services is a trading name of Volkswagen Financial Services Australia Pty Limited ABN 20 097 071 460. Australian Credit Licence 389344

General information

Owning a Volkswagen

Volkswagen New Vehicle Warranty

Every new Volkswagen vehicle is covered by a three year unlimited kilometre manufacturer's warranty, which includes Volkswagen Assist (24-hour roadside assistance). Every new Volkswagen vehicle is also covered by a 3 year paintwork and 12-year anticorrosion perforation warranty. For further information regarding this New Vehicle Warranty, including pricing and terms and conditions, please consult your local Volkswagen dealer or visit www.volkswagen.com.au. Your rights under this warranty sit alongside the consumer guarantees under the Competition and Consumer Act 2010 which cannot be excluded.

Volkswagen Assist – 24-Hour Roadside Assistance

As a valued customer, you can be assured that wherever you travel within Australia, you will have access to roadside assistance, 24 hours a day, 365 days a year. This is complimentary for the duration of the vehicle's original Volkswagen warranty period. You will receive help in the event of a breakdown or accident and, if required, your vehicle will be mobilised or transported to an Authorised Volkswagen Workshop. As a Volkswagen owner you will also have access to the additional benefits of accommodation and car rental if your vehicle cannot be mobilised within 24 hours, when you are over 100km away from home.

Volkswagen Genuine Parts®

Volkswagen Genuine Parts® are designed for your vehicle and approved by Volkswagen, with particular regard to safety. The workmanship, dimensional accuracy and materials used in these parts comply with factory specifications. To ensure safety and reliability, Volkswagen recommends the use of Volkswagen Genuine Parts®. Your authorised Volkswagen Dealers offers a two-year unlimited kilometre warranty on Genuine Parts from the date of purchase (exclusions apply), visit www.volkswagen.com.au.

Volkswagen Financial Services

Buying, borrowing or leasing, Volkswagen Financial Services will certainly make you think differently about financing and insuring your new Volkswagen. Committed to meeting the needs of Volkswagen drivers across Australia, we offer a range of leasing, financing and insurance products, each with distinct advantages depending on your specific circumstances. We can tailor a solution to suit your individual requirements, so you can rest assured that there will be no surprises along the way. Speak to your local participating authorised Volkswagen Dealer today to put together a solution that best suits your lifestyle.

Volkswagen Choice Guaranteed Future Value^

Volkswagen Choice is a finance program available to approved applicants of Volkswagen Financial Services only, which provides Volkswagen owners protection around your Volkswagen's future value#, whilst offering a simple monthly instalment financing option. Enjoy the peace of mind of knowing the minimum value you can receive for your vehicle at the end of your contracted term. You can choose to either trade-in, return or retain your Volkswagen – it's your choice. Learn more about how to protect your investment by visiting www.volkswagen.com.au/en/choice.html today.

Volkswagen Assured Service

What you can expect as standard when servicing through our authorised Volkswagen dealer network is an expert team, trained by Volkswagen utilising specialist Volkswagen diagnostic equipment ensuring they're able to cater for all of your Volkswagen's servicing and repair needs. They also have access to the full Volkswagen Genuine Parts catalogue making sure any part replaced during a service or repair is replaced with a Volkswagen Genuine Part. What's more, your Volkswagen will be returned in immaculate condition, cleaned and vacuumed. Add these together and you can rest assured there's no better place to keep your Volkswagen running like a Volkswagen.

The Transporter

Volkswagen Group Australia Pty Ltd
24 Muir Road Chullora NSW 2190
ABN 14 093 117 876

Printed in Australia
August 2017
www.volkswagen.com.au

Publication: VWCTRANBROMY18

Your Volkswagen dealer.

Important information

Apple CarPlay® is a registered trademarks of Apple Inc. Android Auto™ is a registered trademark of Google Inc. MirrorLink® is a registered trademark of Car Connectivity Consortium LLC. Bluetooth® is a registered trademark of Bluetooth SIG Inc.

Volkswagen is distributed by Volkswagen Group Australia Pty Ltd, 24 Muir Road, Chullora, NSW 2190, ABN 14 093 117 876. Specifications are as planned at August 2017, for Model Year 18 and are subject to change without notice or obligation. All information in this brochure is correct at the time of publication, however variations may occur from time to time and Volkswagen, in so far as it is permitted by law to do so, shall not be liable in any way as a result of any reliance by any person on anything contained in this brochure. Authorised Volkswagen dealers will provide up-to-date information on model application, design feature, prices and availability on request. All colours are a general guide only, as the printing process cannot reproduce the actual exterior colour appearance. See your dealer to confirm colour/model availability.



Commercial
Vehicles

The Transporter

Specifications



Features and Specifications

Safety and security	Van	Crewvan	Single Cab	Dual Cab
Airbags				
Front airbag for driver and front passenger	●	●	●	●
Side/head airbags for driver and front passenger	●	●	●	●
Seat belts				
3-point seat belts with height adjustment and belt tensioners for driver and front passenger	●	●	●	●
3-point seat belts in 2nd row of seats, outer seats with seat belt tensioners	—	●	—	●
Seat belt warning light and buzzer for driver's seat	●	●	●	●
Child Restraints				
Child seat top tether anchorage points (for 2nd row outer seats)	—	●	—	—
ISOFIX child seat anchorage points (for 2nd row outer seats)	—	●	—	—
Brakes and Traction Control				
Multi-Collision Brake (MCB)	●	●	●	●
Electronic Stabilisation Programme (ESP)	●	●	●	●
Anti-Lock Braking System (ABS)	●	●	●	●
Brake Assist System (BA)	●	●	●	●
Traction Control System (TCS)	●	●	●	●
Electronic Differential Lock (EDL)	●	●	●	●
Hill Hold Control	●	●	●	●
Driver Assistance Technology*				
Driver Fatigue Detection	●	●	●	●
Rear Park Distance Control, with acoustic warning	●	●	—	—
Rear View Camera System (requires lifting tailgate)	○	○	—	—
Lighting				
Halogen headlights (H4)	●	●	●	●
Headlight range adjustment	●	●	●	●
Daytime Running Lights (DRL)	●	●	●	●
High stop light	●	●	—	—
Rear fog light	●	●	●	●

*Safety technologies are not a substitute for the driver's responsibility of the vehicle.

● Standard ○ Optional Extra — Not available

Safety and security	Van	Crewvan	Single Cab	Dual Cab
Locking				
Engine immobiliser (electronic)	●	●	●	●
Central locking system with radio remote control, and interior release mechanism	●	●	—	—
Central locking system with radio remote control	—	—	●	●
Two (2) remote control folding keys and one (1) rigid key	●	●	●	●
Child safety locks on rear sliding doors	—	●	—	—
Head Restraints				
Front safety optimised head restraints, height adjustable	●	●	●	●
Rear head restraints, height adjustable (3)	—	●	—	●

Exterior Equipment / Styling

Roof				
Standard roof height	●	●	●	●
Medium roof height	○	○	—	—
High roof height (with high rear wing doors)	○ LWB front wheel drive only	—	—	—
Doors				
Sliding door, left, in load/passenger compartment	●	●	—	—
Sliding door, right, in load/passenger compartment	○	●	—	—
Lifting tailgate with window (available for standard and medium height roof)	●	●	—	—
Rear wing doors with windows	○	○	—	—
Hinges for rear wing doors with opening angle of 250°	○ LWB only	○ LWB only	—	—
Electric sliding doors	○	○	—	—
Power latching tailgate	○	○	—	—
Windows				
Heat-insulating windshield made of laminated glass	●	●	●	●
Heat-insulating glass (green)	●	●	●	●
Windscreen wiper intermittent control	●	●	●	●
Heated rear window(s)	●	●	●	●
Rear window wiper/washer system	●	●	—	—
Power windows with comfort operation and circuit breaker (front)	●	●	—	—
Side windows (fixed) in rear doors	—	—	—	●
Side window (fixed) in sliding door, left	○	—	—	—
Side window (fixed) in sliding door or closed panel, right	○	—	—	—
Side window (slide opening) in sliding door, left	○	●	—	—
Side window (slide opening) in sliding door or closed panel, right	○	●	—	—

● Standard ○ Optional Extra — Not available

Exterior Equipment / Styling	Van	Crewvan	Single Cab	Dual Cab
Body Enhancements				
Black bumpers	●	●	●	●
Black grained radiator grille with 1 decorative chrome molding	●	●	●	●
Black exterior mirror housings and door handles	●	●	●	●
Body coloured sliding door rail cover	●	●	—	—
Body coloured bumpers	—	—	○	○
Body coloured bumpers, exterior mirror housings and door handles	○	○	—	—
Front mud guards	●	●	●	●
Rear mud guards	●	●	—	—
Trailer hitch preparation	●	●	●	●
Wheels and Tyres				
16" steel wheels with centre wheel trim - 215/65 R16 C106/104T tyres	TDI340	●	●	—
17" steel wheels with centre wheel trim - 235/55 R16 103H rf tyres	TDI400	—	—	●
4 x 17" alloy wheels - DEVONPORT - 235/55 R16 103H rf tyres	○	○	○	○
Steel spare wheel - full size, OE tyre	●	●	●	●
Tool kit with vehicle jack	●	●	●	●

● Standard ○ Optional Extra — Not available

Comfort & Convenience	Van	Crewvan	Single Cab	Dual Cab
Air Conditioning				
Front air conditioning system, "climatic" manual	●	●	●	●
Dust and pollen filter	●	●	●	●
Rear air conditioning system with 2nd evaporator, 2nd heater and separate controls (requires full side trim in largo compartment)	○	○	—	—
Cruise Control				
Cruise Control	●	●	●	●
Floor Covering				
Rubber floor covering in cab	●	●	●	●
Rubber floor covering in load/passenger compartment (includes step illumination)	○	●	—	—
Universal floor covering in load area (includes step illumination)	○	—	—	—
In-Car Entertainment and Technology				
Composition Colour audio system 5" colour touch screen display, AM/FM radio with phase diversity tuner, CD player (MP3/WMA compatible), AUX and SD card slot, external USB input, and four (4) speakers. Car menu with convenience and service settings. Includes display for park distance control (if fitted).	●	●	●	●
Composition Media audio system with App-Connect[^] 6.33" colour touch screen display with proximity sensor, AM/FM radio, CD player (MP3/WMA compatible), SD card slot, external AUX and USB inputs, and four (4) speakers. Car menu with convenience and service settings. Includes display for park distance control (if fitted). App-Connect USB interface for Apple CarPlay [®] , Android Auto [™] and MirrorLink [®] in front centre console.	○	○	○	○
Discover Media audio and satellite navigation system with App-Connect[^] and Volkswagen Media Control 6.33" colour touch screen display with proximity sensor, AM/FM radio, CD player (MP3/WMA compatible), 2 x SD card slots for music and navigation data, external AUX and USB inputs, and four (4) speakers. 2D and 3D (bird's eye) map views. Car menu with convenience and service settings. Includes display for park distance control (if fitted). App-Connect USB interface for Apple CarPlay [®] , Android Auto [™] and MirrorLink [®] in front centre console.	○	○	○	○
Voice Control (available with Discover Media only)	○	○	○	○
Bluetooth [®] phone connectivity with contacts display and Bluetooth [®] audio streaming, operation via touch screen audio unit or Multi-Function Display	●	●	●	●
Audio, telephone, cruise control and Multi-Function Display controls mounted on steering wheel	●	●	●	●
12-volt socket on dashboard (cigarette lighter)	●	●	●	●
Instrumentation				
Speedometer & tachometer, electronic odometer and trip meter, service interval display, fuel and coolant gauges, low fuel warning light, adjustable illumination	●	●	●	●
Multi-Function Display (MFD Plus) - trip time, trip length, average and current speed, average and current fuel consumption, display until empty and ambient temperature, digital clock, vehicle status, audio, telephone and navigation (if fitted) menus	●	●	●	●

[^]App-Connect is compatible for selected apps with the latest smartphone versions of iOS and Android

Comfort & Convenience	Van	Crewvan	Single Cab	Dual Cab
Interior Lighting				
Reading lights, front	●	●	●	●
Roof light in load compartment	●	●	—	—
Load Compartment				
Lashing rings for load restraint	6 (8 for LWB)	6 (8 for LWB)	—	—
Hardboard side trim panels , half	●	●	—	—
Additional hardboard side trim panels , full	○	●	—	—
Partition (high) with fixed window	○	—	—	—
Mirrors				
Exterior mirrors (left: convex, right: aspherical)	●	●	—	—
Exterior mirrors on extension braces (left: convex, right: convex)	—	—	●	●
Exterior mirrors, power adjustable and heated	●	●	●	●
Dimming breakaway interior rear view mirror	●	●	●	●
Power Steering				
Rack and pinion power steering	●	●	●	●
Seating				
Height adjustment for driver's seat	●	●	●	●
Lumbar support (manually adjustable) for driver's seat	●	●	●	●
Front passenger bench seat with under-seat storage	○	—	●	○
3-seater bench in 2nd row of seats (folding, tipping, removable)	—	●	—	—
3-seater bench in 2nd row of seats (fixed, with under-seat storage)	—	—	—	●
Cloth seat covering "Austin"	●	●	●	●
Grab handle for front passenger	●	●	●	●
Grab handles on A pillar for driver and front passenger	—	—	●	●
Steering Wheel				
3 spoke leather covered steering wheel	●	●	●	●
Audio, telephone, cruise control and Multi-Function Display controls mounted on steering wheel	●	●	●	●
Steering wheel height and tilt adjustment	●	●	●	●

● Standard ○ Optional Extra — Not available

Comfort & Convenience	Van	Crewvan	Single Cab	Dual Cab
Storage				
Front door pockets	●	●	●	●
Front sunvisors with ticket holder	●	●	●	●
Overhead storage compartment	●	●	●	●
Glove compartment with lockable lid	●	●	●	●
Two (2) cup holders on upper dashboard	●	●	●	●
Central upper storage compartment (open)	●	●	●	●
Two (2) open storage compartments above glovebox	●	●	●	●
Two (2) small storage compartments between glovebox and gear lever	●	●	●	●
Open storage area on either side of dashboard	●	●	●	●
Ashtray, portable	●	●	●	●

Body Builder Items

Electrical interface (terminal block under driver's seat)	○	○	○	○
Second battery (with cut-off relay)	○	○	○	○

Optional Packages	Van	Crewvan	Single Cab	Dual Cab
Driver Assistance Package*				
Side Assist includes power folding mirrors# - for short wheelbase Van and Crewvan only				
Front fog lights with static cornering function				
Light and Vision system: auto dimming inside rear view mirror; automatic headlight activation with separate daytime running lights, "Leaving Home" and manual "Coming Home" function; rain sensing wipers	○#	○#	○#	○#
Interior Comfort Package				
Light and Vision system: auto dimming inside rear view mirror; automatic headlight activation with separate daytime running lights, "Leaving Home" and manual "Coming Home" function; rain sensing wipers				
Height adjustment for front passenger's seat				
Lumbar support (manually adjustable) for front passenger's seat				
Armrests for driver and front passenger seats				
Grab handles on A pillar for driver and front passenger (standard for single cab and dual cab)	○	○	○	○
Vanity mirrors for left and right sun visors				
12-volt socket on upper dashboard				
NOTE: Front passenger seat height adjustment, lumbar support and armrests not available for vehicles with front passenger bench seat				
Load Platform Package				
Load platform with aluminium sides, retaining cables and rear step				
Rear mud guards	—	—	○	○
Available for additional cost: Side drive-under protection				

*Safety technologies are not a substitute for the driver's responsibility of the vehicle.

#Side Assist is only available for short wheelbase Van and Crewvan only. The Driver Assistance Package for long wheel base Van and long wheel base Crewvan as well as Single Cab and Dual Cab does not include "Side Assist".

● Standard ○ Optional Extra — Not available

Technical Specification

Engine	2.0 litre TDI340 BlueMotion Technology		2.0 litre TDI400 BlueMotion Technology	
Type	4 cylinder inline turbocharged direct injection diesel with engine Start/Stop system^		4 cylinder inline bi-turbo direct injection diesel with engine Start/Stop system^	
Max power, kW @ rpm	103 @ 3,500		132 @ 4,000	
Max torque, Nm @ rpm	340 @ 1,750-2,500		400 @ 1,500-2,000	
Cubic capacity, litres/cc	1,968		1,968	
Bore/stroke (mm)	81.0 x 95.5		81.0 x 95.5	
Compression ratio	16.5:1		16.5:1	
Fuel type (recommended)	Diesel DIN EN 590		Diesel DIN EN 590	
Transmission	6 Speed Manual	7 Speed Direct Shift Gearbox (DSG) with sport mode and Tiptronic function Includes coasting function.	7 Speed Direct Shift Gearbox (DSG) with sport mode and Tiptronic function Includes coasting function.	
Driven wheels	Front Wheel Drive	Front Wheel Drive	Front Wheel Drive	All Wheel Drive
Fuel Consumption** - Van / Crewvan	TDI340 Manual	TDI340 DSG	TDI400 DSG	TDI400 DSG 4Motion
Combined, L/100km	7.2	7.7	7.6	8.3
Urban, L/100km	9.1	9.5	8.8	9.7
Extra Urban, L/100km	6.1	6.7	6.9	7.5
Fuel tank capacity (L)	80	80	80	80
Fuel Consumption** - Cab Chassis		Single Cab TDI340 DSG	Dual Cab TDI400 DSG	
Combined, L/100km		7.2	7.9	
Urban, L/100km		9.5	8.8	
Extra Urban, L/100km		8.0	7.3	
Fuel tank capacity (L)		80	80	
Running Gear				
Suspension				
Front Axle	Independent McPherson struts, sub-frame with coil springs and gas filled dampers			
Rear Axle	Semi-trailing independent rear axle with coil springs and anti-roll bar			
Suspension Upgrades	Heavy-Duty and Rough Road suspension packages available			
Steering	Rack and pinion power steering			
Brake systems	Anti-Lock Braking System (ABS) with Electronic Brake-Pressure Distribution (EBD), Brake Assist and Electronic Stabilisation Program (ESP). Brake Energy Recuperation.			
Brakes	Power assisted Hydraulic		Power assisted Hydraulic	
Front	Ventilated disc 308mm		Ventilated disc 340mm	
Rear	Ventilated disc 294mm		Ventilated disc 294mm	

^The Start/Stop system is designed to reduce fuel consumption and CO2 emissions. It achieves this by automatically switching off the engine while the vehicle is stationary and then starting it again automatically when the driver wants to drive off. There are certain operating conditions where the Start/Stop system is deactivated (e.g. during engine warm-up), please refer to the owner's manual for full operating information.

**Fuel consumption figures according to ADR 81/02 derived from laboratory testing. Factors including but not limited to driving style, road and traffic conditions, environmental influences, vehicle condition and accessories fitted, will in practice in the real world lead to figures which generally differ from those advertised. Advertised figures are meant for comparison amongst vehicles only.

Weights and Capacity

	SWB Van	SWB Van		LWB Van	LWB Van		SWB Crewvan	LWB Crewvan
Weights - Van / Crewvan	TDI340	TDI400	TDI400 4Motion	TDI340	TDI400	TDI400 4Motion	TDI340	TDI340
Gross Vehicle Weight (GVM, kg)	3,000	3,000	3,000	3,000	3,000	3,000	3,000	3,000
Unladen Mass ¹ for Standard roof (kg) - Manual	1,744	—	—	1,800	—	—	—	—
Payload ² maximum for Standard roof (kg) - Manual	1,256	—	—	1,200	—	—	—	—
Unladen Mass ¹ for Standard roof (kg) - DSG	1,764	1,800	1,910	1,820	1,876	1,986	1,918	1,981
Payload ² maximum for Standard roof (kg) - DSG	1,236	1,200	1,090	1,180	1,124	1,014	1,082	1,019
Towing Capacity (kg)								
Braked [‡]	2,500	2,500	2,500	2,500	2,500	2,500	2,500	2,500
Unbraked	750	750	750	750	750	750	750	750
Towbar Load Limit (kg)	100	100	100	100	100	100	100	100
	LWB Single Cab	LWB Dual Cab						
Weights - Cab Chassis	TDI340	TDI400						
Gross Vehicle Weight (GVM, kg)	3,000	3,000						
Unladen Mass ¹ (kg) - DSG	1,584	1,738						
Payload ² maximum (kg) - DSG	1,416	1,262						

1. The Unladen Mass (UM) includes 10L of fuel, vehicle fluids and no occupants. Figures quoted are for base model vehicles only.

2. Payload figures determined by subtracting 'Unladen Mass' (UM) from total 'Gross Vehicle Mass' (GVM). A vehicle's final payload, given the different configurations, can only be determined by weighing the individual vehicle and comparing to the known GVM. Figures quoted are for base model vehicles only.

[‡] Please note, Volkswagen Group Australia does not endorse or will not be held liable for any claim, loss or damage arising from the use or fitment of electronic trailer brakes.

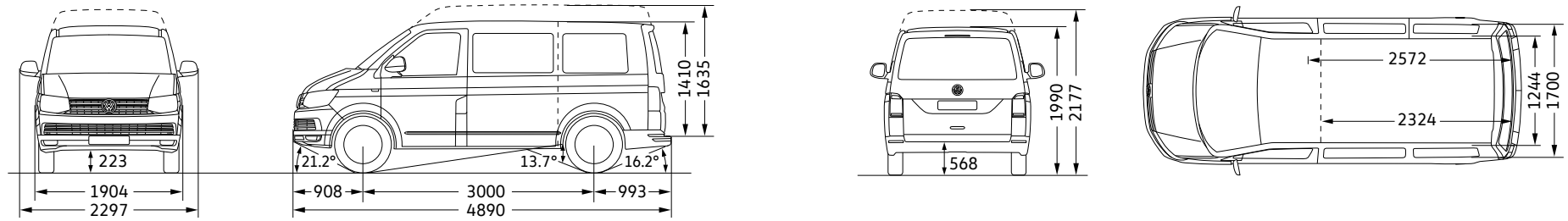
● Standard ○ Optional Extra — Not available

Weights and Capacity

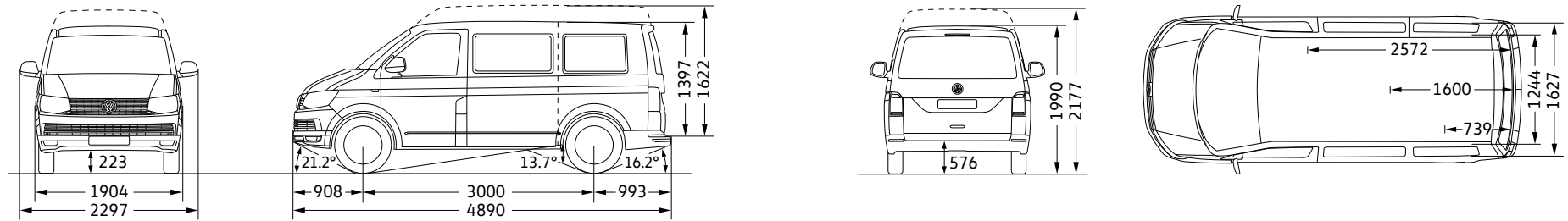
Interior	SWB Van	SWB Crewvan	LWB Van	LWB Crewvan	LWB Single Cab	LWB Dual Cab
Seating capacity	2 (3 optional)	5 (2 + 3)	2 (3 optional)	5 (2 + 3)	3	5 (2 + 3) 6 optional (3 + 3)
Cargo Volume (L) - behind 1st row, Standard roof	5,800	5,800	6,700	6,700	—	—
Cargo Volume (L) - behind 1st row, Medium roof	6,700	6,700	7,800	7,800	—	—
Cargo Volume (L) - behind 1st row, High roof	—	—	9,300	9,300	—	—
Load Compartment Length (mm) - without rear seats	2,572	2,572	2,975	2,938	—	—
Load Compartment Length (mm) - behind 2nd row of seats	—	1,600	—	1,967	—	—
Load Compartment Width (mm) - maximum	1,700	1,627	1,700	1,627	—	—
Load Compartment Width (mm) - at wheel arches	1,244	1,244	1,244	1,244	—	—
Load Compartment Height (mm) - Standard roof	1,410	1,397	1,410	1,394	—	—
Load Compartment Height (mm) - Medium roof	1,635	1,622	1,635	1,619	—	—
Load Compartment Height (mm) - High roof	—	—	1,940	1,924	—	—
Sliding Door Width (mm)	1,017	1,017	1,017	1,017	—	—
Sliding Door Height (mm)	1,282	1,264	1,282	1,264	—	—
Tailgate / Rear Wing Door Width (mm) - Standard/ Medium roof	1,473	1,473	1,473	1,473	—	—
Tailgate / Rear Wing Door Height (mm) - Standard/ Medium roof	1,299	1,290	1,299	1,290	—	—

Dimensions

SWB Van

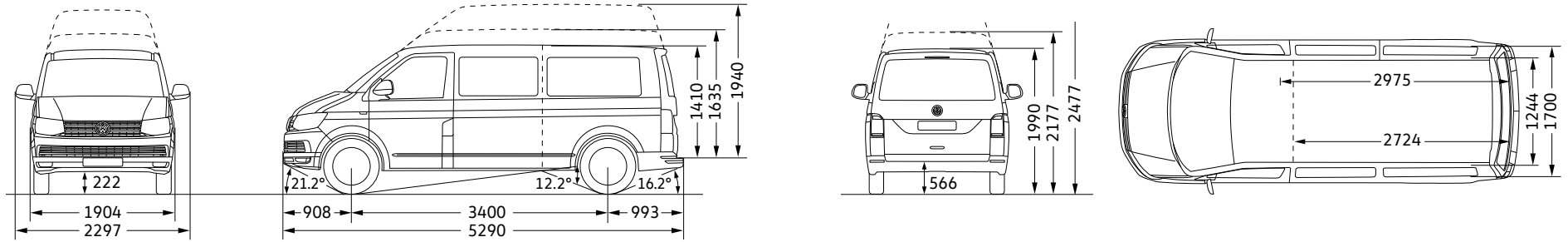


SWB Crewvan

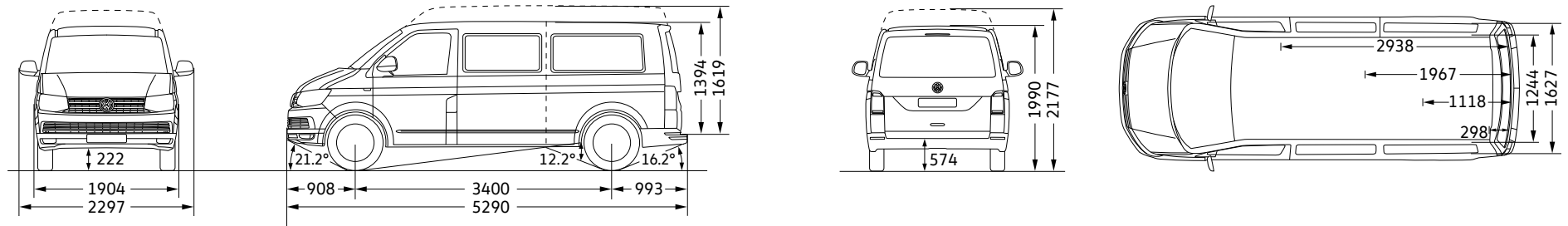


Dimensions

LWB Van*



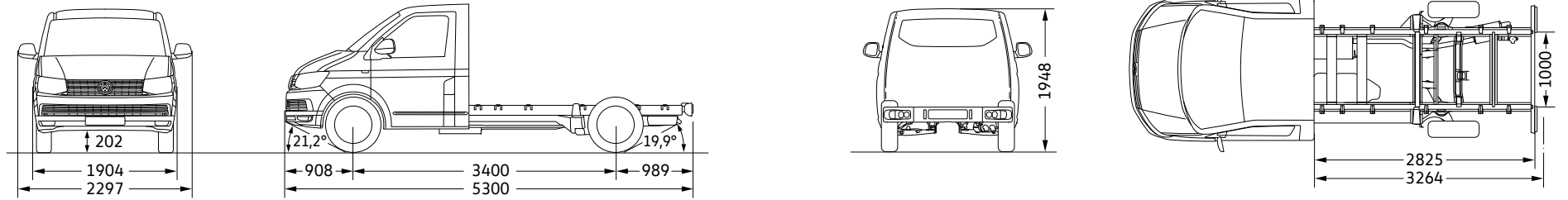
LWB Crewvan



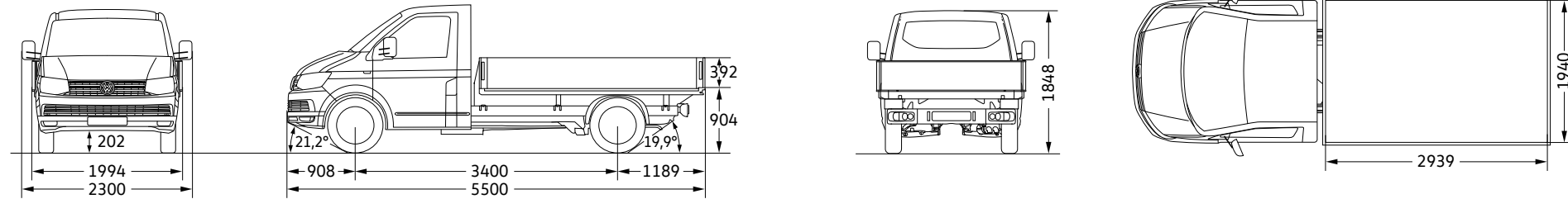
*High roof not available in conjunction with long wheelbase 4MOTION models. Full vehicle specifications and dimensions are available at www.volkswagen-commercial.com.au

Dimensions

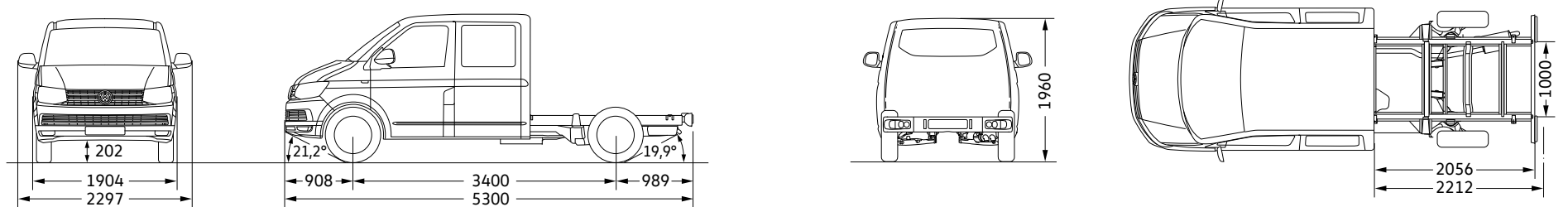
Single Cab Chassis



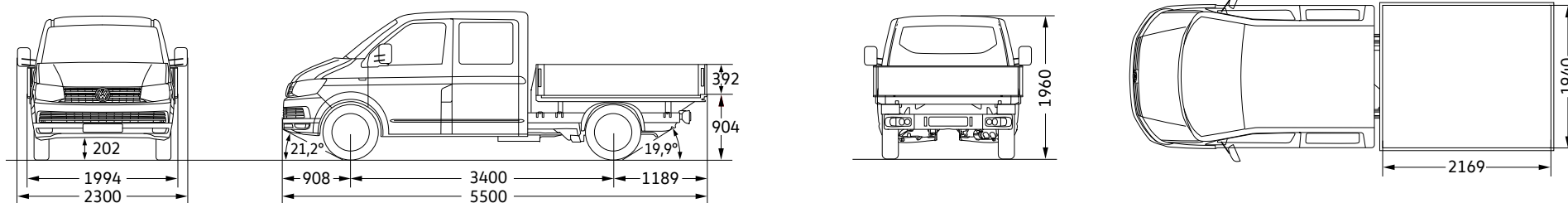
Single Cab Chassis with Optional Tray



Dual Cab Chassis



Dual Cab Chassis with Optional Tray



Solid paint finishes



Candy White | Solid paint finish | B4B4



Pure Grey | Solid paint finish | J2J2



Deep Ocean | Solid paint finish | OPOP



Luminous Orange | Solid paint finish | E3E3



Cherry Red | Solid paint finish | 4B4B



Summer Blue | Solid paint finish | E2E2



Bamboo Green | Metallic paint finish | 3T3T



Starlight Blue | Metallic paint finish | 3S3S



Acapulco Blue | Metallic paint finish | 2W2W



Curcuma Yellow | Metallic paint finish | 6T6T



Reflex Silver | Metallic paint finish | 8E8E



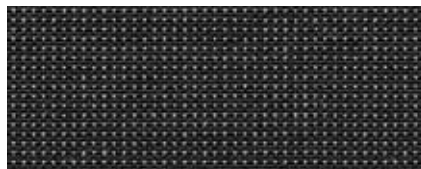
Indium Grey | Metallic paint finish | X3X3



Deep Black | Pearl effect paint finish | 2T2T



Chestnut Brown | Metallic paint finish | H4H4



Austin
Cloth seat upholstery | Titanium Black / Moon Rock Grey

Seat upholstery

Wheels



17" alloy wheel
- DEVONPORT

Optional for Van, Crewvan and Cab Chassis

General information

Owning a Volkswagen

Volkswagen New Vehicle Warranty

Every new Volkswagen vehicle is covered by a three year unlimited kilometre manufacturer's warranty, which includes Volkswagen Assist (24-hour roadside assistance). Every new Volkswagen vehicle is also covered by a 3 year paintwork and 12-year anticorrosion perforation warranty. For further information regarding this New Vehicle Warranty, including pricing and terms and conditions, please consult your local Volkswagen dealer or visit www.volkswagen.com.au. Your rights under this warranty sit alongside the consumer guarantees under the Competition and Consumer Act 2010 which cannot be excluded.

Volkswagen Assist – 24-Hour Roadside Assistance

As a valued customer, you can be assured that wherever you travel within Australia, you will have access to roadside assistance, 24 hours a day, 365 days a year. This is complimentary for the duration of the vehicle's original Volkswagen warranty period. You will receive help in the event of a breakdown or accident and, if required, your vehicle will be mobilised or transported to an Authorised Volkswagen Workshop. As a Volkswagen owner you will also have access to the additional benefits of accommodation and car rental if your vehicle cannot be mobilised within 24 hours, when you are over 100km away from home.

Volkswagen Genuine Parts®

Volkswagen Genuine Parts® are designed for your vehicle and approved by Volkswagen, with particular regard to safety. The workmanship, dimensional accuracy and materials used in these parts comply with factory specifications. To ensure safety and reliability, Volkswagen recommends the use of Volkswagen Genuine Parts®. Your authorised Volkswagen Dealers offers a two-year unlimited kilometre warranty on Genuine Parts from the date of purchase (exclusions apply), visit www.volkswagen.com.au.

Volkswagen Financial Services

Buying, borrowing or leasing, Volkswagen Financial Services will certainly make you think differently about financing and insuring your new Volkswagen. Committed to meeting the needs of Volkswagen drivers across Australia, we offer a range of leasing, financing and insurance products, each with distinct advantages depending on your specific circumstances. We can tailor a solution to suit your individual requirements, so you can rest assured that there will be no surprises along the way. Speak to your local participating authorised Volkswagen Dealer today to put together a solution that best suits your lifestyle.

Volkswagen Choice Guaranteed Future Value^

Volkswagen Choice is a finance program available to approved applicants of Volkswagen Financial Services only, which provides Volkswagen owners protection around your Volkswagen's future value#, whilst offering a simple monthly instalment financing option. Enjoy the peace of mind of knowing the minimum value you can receive for your vehicle at the end of your contracted term. You can choose to either trade-in, return or retain your Volkswagen – it's your choice. Learn more about how to protect your investment by visiting www.volkswagen.com.au/en/choice.html today.

Volkswagen Assured Service

What you can expect as standard when servicing through our authorised Volkswagen dealer network is an expert team, trained by Volkswagen utilising specialist Volkswagen diagnostic equipment ensuring they're able to cater for all of your Volkswagen's servicing and repair needs. They also have access to the full Volkswagen Genuine Parts catalogue making sure any part replaced during a service or repair is replaced with a Volkswagen Genuine Part. What's more, your Volkswagen will be returned in immaculate condition, cleaned and vacuumed. Add these together and you can rest assured there's no better place to keep your Volkswagen running like a Volkswagen.

To find out more, go to www.volkswagen.com.au/en/choice.html

^The Volkswagen Choice Program consists of an option to require Volkswagen Financial Services to purchase your vehicle at the end of your Volkswagen Financial Services Chattel Mortgage, Consumer Loan or Hire Purchase for a value (known as the Guaranteed Future Value) determined by Volkswagen Financial Services and set out in your contract. The Guaranteed Future Value is not a representation by Volkswagen Financial Services as to the likely market value of your vehicle as at the end of your contract. The option is available on new and demonstrator Volkswagen vehicles for selected models only. Please verify with your dealership vehicles that are eligible for the program. #If vehicles are not returned in an acceptable condition, as defined in the terms and conditions or exceed kilometre restrictions the Guaranteed Future Value will be reduced. See the Volkswagen Choice Fair Wear and Tear Guide for more information on the required conditions and circumstances. The cost of the Volkswagen Choice Program is incorporated into the applicable interest rate. Please read the full terms and conditions. Please consider whether these products and services are appropriate for your circumstances. Before acting on any of the information on this page, please seek independent financial and tax advice. Full terms and conditions are available upon application. Available only to approved applicants of Volkswagen Financial Services. Subject to credit assessment. Fees and charges apply. Fleet, government, rental buyers, hire car and chauffeur companies are excluded. Available at participating Volkswagen dealers. Volkswagen Financial Services is a trading name of Volkswagen Financial Services Australia Pty Limited ABN 20 097 071 460. Australian Credit Licence 389344.

The Transporter

Volkswagen Group Australia Pty Ltd
24 Muir Road Chullora NSW 2190
ABN 14 093 117 876

Printed in Australia
August 2017
www.volkswagen.com.au

Publication: VWCTRANSPEMYC18

Your Volkswagen dealer.

Important information

Apple CarPlay® is a registered trademarks of Apple Inc. Android Auto™ is a registered trademark of Google Inc. MirrorLink® is a registered trademark of Car Connectivity Consortium LLC. Bluetooth® is a registered trademark of Bluetooth SIG Inc.

Volkswagen is distributed by Volkswagen Group Australia Pty Ltd, 24 Muir Road, Chullora, NSW 2190, ABN 14 093 117 876. Specifications are as planned at August 2017, for Model Year 18 and are subject to change without notice or obligation. All information in this brochure is correct at the time of publication, however variations may occur from time to time and Volkswagen, in so far as it is permitted by law to do so, shall not be liable in any way as a result of any reliance by any person on anything contained in this brochure. Authorised Volkswagen dealers will provide up-to-date information on model application, design feature, prices and availability on request. All colours are a general guide only, as the printing process cannot reproduce the actual exterior colour appearance. See your dealer to confirm colour/model availability.