

PEWTER LIVE

2014

THE WORSHIPFUL COMPANY OF PEWTERERS



COPYRIGHT 2014
*The Worshipful
Company of Pewterers*



No part of this work may be reproduced, stored in a retrieval system or transmitted in any form or by any means, including copyrighting and recording, without written permission from the copyright owner, application for which should be addressed to The Worshipful Company of Pewterers – Pewter Live. Whilst every effort has been made to verify statements of fact by contributors, including the Students and professional designer entering the competition, no responsibility is accepted for errors or omissions by them.

Editor - The Clerk, Captain Paddy Watson RN

Designed and produced by -
Eleanor Mason Brown -
emc@pewterers.org.uk

Printed by Splash Printing -
www.splashprinting.co.uk

CORRESPONDENCE
The Worshipful Company of Pewterers,
Pewterers' Hall, Oat Lane, London, EC2V 7DE

CF DAY Ltd.

Property Management Experts

705 High Road, North Finchley
London, N12 0BT

Tel: 020 8492 7770

Wish The Worshipful Company
of Pewterers every success for

Pewter Live 2014

LEIGH CARR

*Wishes the Worshipful Company of
Pewterers every success for
Pewter Live 2014*

www.leighcarr.co.uk

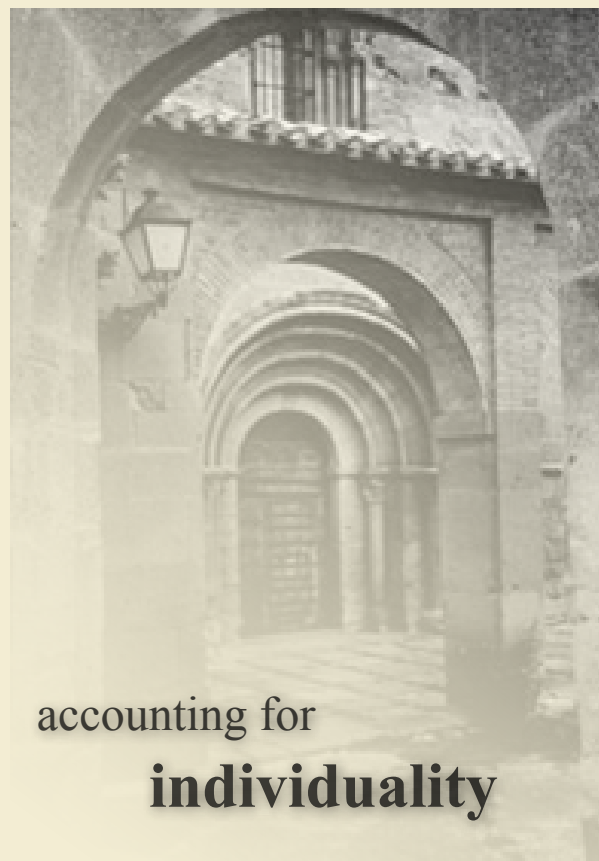
Working with you to achieve growth

Quite simply, we are committed to helping you grow your business and improve your bottom line. At Leigh Carr we believe the way forward for a business is to identify its positive potentials and develop strategies to realise them.

Leigh Carr, 12 Helmet Row, London, EVC1V 3QJ

tel: 020 7566 3900 fax: 020 7566 0002

email: enquiries@leighcarr.co.uk



accounting for
individuality



PEWTER LIVE

2014

Contents

Introduction 3

Sponsors 5

Master and Company 6

Shop at Pewter Live 8

Judges 10

Independent Awards 13

The Open Competition 14

Student Competition:

Decorative Arts 24

Interior, Architectural & Furniture 30

Fashion 32

QUEST - Gordon W. Robertson 40

Past Winners 42

Statement of Design Rights
& Entrants Index 48

RATHBONES

Established 1742



INVESTMENT SERVICES FOR CHARITIES OF EVERY SIZE

At Rathbones, we believe that smaller charities deserve the same level of service as larger charities; 95% of our charity clients have £20 million or less under our management. We remain committed to offering a comprehensive investment service to charities of all shapes and sizes.

We are proud to manage £2.7 billion of charitable funds*, making Rathbones one of the top ten charity fund managers**. My team and I would be delighted to meet you for an informal discussion about your charity's particular requirements.

*As at 31 December 2013. **Charity fund managers by funds under management Charity Finance November 2013.

For further details please contact Ivo Clifton on

020 7399 0338

ivo.clifton@rathbones.com

www.rathbones.com

The value of investments and income arising from them may fall as well as rise and you might get back less than you originally invested.

Rathbone Investment Management is authorised by the Prudential Regulation Authority and regulated by the Financial Conduct Authority and the Prudential Regulation Authority.

PEWTER LIVE 2014

INTRODUCTION

The Worshipful Company of Pewterers has been actively involved with the pewter trade for over six hundred years. Today, one of the principal examples of this involvement is Pewter Live, which has become a noted and influential event held in the very heart of the City in the impressive surroundings of Pewterers' Hall. This year we are pleased to announce that The Rt. Honourable The Lord Mayor of London, Alderman Fiona Woolf CBE will formally open Pewter Live on Tuesday 20 May and that John Makepeace OBE will present the prizes on Thursday 22 May.

Pewter Live showcases exciting and innovative work of both established and student designers. There are two competitions: the Student and the Open. The Student competition has three categories: Decorative Arts, Interior, Architectural and Furniture and Fashion - the Total Look. Over seventy students and professionals are taking part. The standard this year has been extremely high and we are delighted that more students are using pewter as a medium for design.

This year the Pewter Live sub-committee, chaired by Richard Parsons, devised a brief for the Open competition 2014 which encouraged the entrants to submit their finest piece. The specification was that the entry was an example of their current work. It can be made of mixed material providing that the entry is predominantly made of pewter. There are no restrictions on size or what the object or group of objects might be other than they must not have been entered in previous Pewter Live competitions. This open approach has attracted a wide range of entries of superb quality. The entrants have been able to keep their individuality and enter designs which, we hope, will attract commercial buyers as well as the judge's eye.

The team of judges, chaired by Liveryman Sebastian Conran, will be looking for innovative design, craftsmanship and the ability to make their entries appeal to retailers with additional consideration for those who consider commercial viability.

Pewter Live is all about encouraging innovation in design in order to exploit pewter to its fullest potential and to produce ideas which will stretch the boundaries of this marvellous metal. We wanted the entrants to bring pewter alive; to demonstrate an understanding of its inherent qualities and its contemporary appeal to consumers of all ages and tastes. During the event professional designers will be selling their pewterware and showcasing new designs (go to page 8 -9 for more details).

Pewter Live could not be run without the participation of the colleges and universities. Once again, our thanks go to the tutors and students for their support and the tremendous effort and enthusiasm that goes into the competition. The same applies to the members of the Company and staff who organise the competition.

Carmarthen School of Creative Arts www.colegsirgar.ac.uk

Falmouth University www.falmouth.ac.uk Tutor: Jason Cleverly

London College of Fashion www.arts.ac.uk/fashion Tutor: Jane Francis

Plymouth College of Art and Design www.plymouthart.ac.uk Tutor: John Grayson

South Devon College www.southdevon.ac.uk Tutor: Trish Woods

Sussex Coast College www.sussexcoast.ac.uk Tutor: Ashley Heminway

Truro College www.truro-penwith.ac.uk Tutor: Martin Page



APPRENTICESHIPS ARE CHANGING

**OUR COMMITMENT TO
APPRENTICES NEVER WILL**

As the leading provider of work-based qualifications, we engage directly with employers and industry stakeholders in over 20 sectors and have always been at the forefront of the national drive to help young people gain the skills they need.

We are enhancing our digital capability and learning technology resources as well as building our capacity to support the delivery of independent assessment.

That's why you won't find anyone better to help guide you through the changes being made to Apprenticeships.

To find out more, simply visit

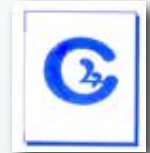
WWW.CITYANDGUILDS.COM/APPRENTICESHIPS

or email

APPRENTICESHIPS@CITYANDGUILDS.COM



CADMAN
FINE WINES



City & Guilds



HOPEMAN
ASSOCIATES Ltd.



SPONSORS

The Worshipful Company of Pewterers would like to thank

Cadman Fine Wines - www.cadmanfinewines.co.uk

CF Day Ltd. - Property Management Consultants

City and Guilds - www.cityandguilds.com

Giftware Association - www.ga-uk.org

Hopeman Associates

Leigh Carr Chartered Accountants - www.leighcarr.co.uk

NAG – the National Association of Goldsmiths - www.jewellers-online.org

Alex and Patricia Neish

Procom Audio Visual Suppliers - www.procom.uk.com

Partners in Pewter - www.partnersinpewter.co.uk

Rathbones - www.rathbones.com

Life's Kitchen- www.lifeskitchen.com

Splash Printing - www.splashprinting.co.uk

Teamwork European Services - www.teamworkexhibitions.co.uk

Utility Funding - www.utilityfunding.ocm

Wildshaw Ltd.

PEWTER LIVE 2014

MASTER &

It is a privilege to welcome you to Pewter Live, the nation's premier pewter design competition and exhibition.

Pewter has long been a part of our history. Phoenicians traded for Cornish tin more than 2000 years ago and pewter articles were made in Roman Britain. Use of pewter peaked in the 17th century when, from birth to death, people were surrounded by pewter; items for eating and drinking; bleeding bowls, bedpans, and snuffboxes. Taverns used mugs and measures. Churches used flagons, chalices, patens and baptismal bowls. This pre-eminence ended with the introduction of porcelain and pottery during the 18th century. Even so, pewter continued to be used for decorative purposes. Artists and craftsmen during the Arts and Crafts Period and the Art Nouveau Period used pewter and achieved superb results.



For centuries pewter has had an enduring appeal. Today, it is valued by designers and craftsmen alike for its beauty and versatility. We are delighted to be able to show you some of their work.

Michael Johnson

Michael Johnson
Master of the Worshipful Company of Pewterers

COMPANY



The Pewterers' Company is an ancient and continually evolving foundation with medieval origins as a City Guild. The earliest documented reference to it is in the records of the Corporation dated 1348. The Company's own records date from 1451. It is ranked sixteenth in the order of civic precedence among over a hundred Livery Companies.

The first charter, granted by King Edward IV in 1473, empowered the Company to regulate the trade throughout the kingdom, unlike the powers granted to the majority of other companies, whose jurisdiction was limited to the City and its environs. It could seize and destroy pewter below a certain standard, and also impose fines and other penalties on its members for failing to uphold the craft. From 1503, an Act of Parliament required members of the Company to register their 'Touchmarks', which were 'to be recorded on tablets of pewter' and kept at the Hall of the Company. The use of a Maker's Touchmark served not only to safeguard the Craftsmen, but also to enable the public to have confidence in the quality of the product.

Today, the Company has an active and diverse membership, drawn from a wide range of backgrounds. The Company's principal activities are the support of the pewter trade in this country, the management of its charities, supporting the government of the City of London and the Armed Forces of the Crown and maintaining a lively and enjoyable corporate social life, meeting regularly in Pewterers' Hall.



The first Hall, completed in 1496, was destroyed in the Great Fire. The second Hall, on the same site in Lime Street, which is still owned by the Company, was demolished in 1932. The present Hall was opened in 1961.

PEWTER LIVE 2014

SHOP @

There will be an impressive range of contemporary pewter for sale at Pewter Live 2014.

FLEUR GRENIER

design@fleurgrenier.co.uk
www.fleurgrenier.co.uk



GLOVER AND SMITH

sales@gloverandsmith.com
www.gloverandsmith.com



SHARON DICKINSON

sharondickinson@live.co.uk
web: www.archivescrafts.co.uk



AE WILLIAMS

info@pewtergiftware.com
www.pewtergiftware.com



GORDON W ROBERTSON

Info@gordonwrobertson.com
www.gordonwrobertson.com



PEWTER LIVE

Public opening times: 10.00 till 12.00 and 15.00 till 17.00
on Wednesday 21 May

WENTWORTH PEWTER

sales@wentworth-pewter.com
www.wentworth-pewter.com



KEITH TYSSSEN

keithtyssen.co.uk
keith@keithtyssen.co.uk



ELLA MCINTOSH DESIGN

mail@ellamcintoshdesign.com
www.ellamcintoshdesign.com



PARTNERS IN PEWTER

info@partnersinpewter.co.uk
www.partnersinpewter.co.uk



BONNIE MACKINTOSH

bonnimack@aol.com





The Worshipful Company of Pewterers is privileged to welcome John Makepeace OBE as guest of honour at the presentation of prizes for Pewter Live 2014.

John Makepeace has been at the cutting edge of European design for 50 years and was a pioneer in the ecologically sustainable use of forest product. His early reputation flourished through the design of retail products made in his workshops, leading to a steady flow of prestigious commissions. In 1976 he bought Parnham House and founded Parnham College alongside his own studios. That gained legendary status and stimulated a renaissance in furniture making. With the team of craftsmen in his studio he has created some of the most iconic pieces of furniture of the period. The College purchased Hooke Park in 1983 and initiated a research and development programme into the improved use of forest product leading to the demonstration of the new technologies in the construction of the new buildings for the College campus; on his retirement as Director, the College amalgamated with the Architectural Association.

John was a founding member of the Crafts Council, a Trustee of the V&A, a consultant to the All India Handicraft Board. He was awarded an OBE in 1988 for services to furniture design, received the Furniture Makers Company's first Award of Distinction and a Special Commendation for the Prince Philip Designers Prize. He remains professionally active and was recently exhibiting at Collect 2014.

Chairman of the Pewter Live sub-committee

Richard Parsons, Chairman of the Pewter Live sub-committee also joins the judging panel. He has many years of retail experience in the jewellery and silver industries and designs and sells objects made of precious metal, including many special commissions. His work includes advising both public and private collections, also writing and lecturing. He is a Court Assistant of the Worshipful Company of Pewterers' and a Freeman of the Worshipful Company of Goldsmiths'.

Chairman of Judges



Sebastian Conran - An internationally recognised designer, Sebastian Conran studied Industrial Design Engineering at Central St. Martins, where he gave the Sex Pistols their first booking and designed the record sleeves & posters for The Clash. He then started his career at Wolff Olins designing corporate identities for the likes of Pilkington Glass, moving on to lead hard-goods design at Mothercare, and then, in 1986, he founded Sebastian Conran Associates design studio, which he continues to lead.

Sebastian is currently Designer in Residence at the University of Sheffield Science Faculty Founding; Trustee of the Design Museum; Chairman of the Creative Industries KTN steering group Technologies Innovation Network; Chairman Design Action in Scotland steering group, Scotland's Design and Industry knowledge exchange.



Mark Bond consults for top level global retailers, developing and selecting style led products. Previously Mark was Head of Design for Home & Furniture at Tesco. Graduating from the RCA in 1994, Mark established his own design consultancy working with high profile companies such as Hermes, the Design Museum, the Barbican Centre, the Design Council, the British Council, Marks & Spencer, and Habitat UK. Mark has curated exhibitions, co-authored books, lectured internationally, trend forecasted and judged design competitions.

Mark also ran the design team at Conran & Partners and designed for SCA. He has travelled extensively and collaborated with manufacturers globally, developing designs in most product areas.

Sue Bonham graduated with Distinction at the London College of Fashion in 1981 and her graduation collection was purchased by Harrods. In the 1980s Sue worked with Simon Napier-Bell making clothes for his bands such as Wham! and Japan as well as with Terence Donovan styling for some of his photo shoots. Following this, she was also a part time lecturer at the London College of Fashion as well as showing both at London Fashion Week and Paris Fashion Week under her own label. Since the late 1990s Sue has been a couture designer for both women and men with her own shows in London's West End. She has an expanding list of high profile clients, including HRH The Countess of Wessex, designing and making stylish outfits for all occasions.



Marc Meltonville - Food Historian, Historic Royal Palaces, England. Marc trained in Ceramic history, form and construction. After college he went to work in the media, firstly in advertising and then the writing of children's books. To date he has over twenty books in print.

Marc has worked in museums for over twenty years in education, exhibition design and, more lately, interpretation. A chance meeting with a noted food historian led him to be involved with the first experiment with live historic cookery at Hampton Court in 1991; supposedly a one off project. Marc has worked with the Historic Royal Palaces ever since. Since 2006 he has been based at Hampton Court working first on the research and representation of the Tudor kitchens there. Lately he has been involved in a fascinating project to find, research and open the King's Chocolate Kitchen at Hampton Court. These projects have seen him involved with numerous TV and radio programmes along with lecturing across the UK and North America.

Nick Munro started his career in 1987 by turning bedsprings into egg cups – an instant hit which won him the accolade of UK Young Entrepreneur of the Year. Soon afterwards he invested all the money he'd made from this initial venture into his first collection of pewter, including teapots, cafetieres and pepper mills, manufactured by A R Wentworth in Sheffield.

More recently, Nick has gone on to work with companies all over the world including Royal Selangor Malaysia and his portfolio ranges from tea pots to wristwatches, crystal to porcelain. He opened his first independent shop last year and is presently expanding his own brand into China, Korea and Japan. But it all started with Sheffield made pewter (albeit by way of a bedspring or two!).



Whether you're buying or selling,
you'll find it easier with us



AT THE HEART OF THE GIFT AND
HOME INDUSTRY SINCE 1947



Copywatch Design Protection

will help protect your products from copyright and design theft



Free, confidential and specialist advice

will ensure you stay ahead of the game



Special 'first look' galleries and member networking events

allow you to buy and sell new exciting products

Plus a lot more...

As a mutually supportive network of **suppliers, designers, craftworkers** and **retailers**, we are your **GA**teway to the gift and home industry. What's more, with discounts on certain trade shows, free online promotion and reduced payment processing rates, membership can build your reputation and help your business flourish.

Find out how much you could gain:

www.ga-uk.org
enquiries@ga-uk.org
 The Giftware Association
 The_GA_UK
0121 237 1104



Visit us at www.ga-uk.org

AWARDS

In both the Open and Student categories the Company awards prizes which are detailed at the beginning of each category on the following pages. Additionally the Company is most grateful to the organisations and individuals who give independent awards. These awards help the students to think beyond their single entry to their future career. Commercial appeal and unique design are a vital part of modern trade and Pewter Live aims to provide encouragement at the early stage of many of these designers careers' in pewter and recognition to those established in the trade. The following awards are a vital part of the Competition.



The Giftware Association Prize - The Giftware Association is a long-standing supporter of Pewter Live, each year selecting an entry considered to have commercial viability as a gift which is then promoted by the Association. The winning student is also offered commercial advice and support and a year's free membership of the Association. We are most grateful to Liveryman Isabel Martinson, Chief Executive of The Giftware Association, who introduced the award. www.ga-uk.org



City and Guilds Award - City & Guilds was established in 1878 to help individuals develop their talents and abilities for career progression. A global leader in vocational education, they have awarded 20 million qualifications since 2000 alone. The Award is for those who have not only taken a City & Guilds course, but have reached the highest standards of craftsmanship and skill. www.cityandguilds.com



Partners in Pewter Prize – Adrian and Lesley Doble, who run Partners in Pewter, have established a reputation for outstanding design and craftsmanship with over twenty years' experience. The Company is delighted that they will be presenting a prize of a day's visit to their Cookham Dean studio. This opportunity will be of great benefit to the winner who will gain insights into producing, promoting and selling their designs. The successful student will be someone with a flair for design and technique, and the intention to make a living based on their creative skills. www.partnersinpewter.co.uk



The ABPC Commercial Prize - The ABPC (Association of British Craftsman) Council has raised from its members a prize fund for a new 'commercial prize'. This is the first year it will be awarded and we hope it will become a long-standing award. This award will be awarded specifically to the Pewter Live entry which, in the judges' opinion, has the greatest commercial potential. www.britishpewter.co.uk



Above: Her Royal Highness The Countess of Wessex with Patricia Neish and Gordon Robertson being awarded the Patricia and Alex Neish Award.

The Alex and Patricia Neish Award - Liverymen Alex and Patricia are long-standing supporters of Pewter Live and have made a wonderful contribution, not only to the current trade, but to the preservation of historical pewter. They recently granted their collection of fine pewter to the Smith Art Gallery and Museum at Stirling. Their award acknowledges the design and skill of the winner, encouraging excellence and promoting items which will become future collectors items.

The Neish Collection on display in the Stirling Smith Art Gallery and Museum
Tues - Sat 10.30am - 5.00pm, Sundays 2.00pm - 5.00pm
www.smithartgalleryandmuseum.co.uk

OPEN COMPETITION

Pewter Live's mission is to encourage innovation in design in order to exploit pewter to its fullest potential and produce ideas that will stretch the boundaries of this marvellous material. The object is to bring pewter alive; to demonstrate an understanding of its inherent qualities and its appeal and relevance to contemporary consumers of all ages and tastes.

OPEN CATEGORY BRIEF 2014 –

This year the Pewter Live sub-committee, chaired by Richard Parsons, devised a brief for the Open competition 2014 which encouraged the entrants to submit their finest piece. The specification was that the entry was an example of their current work. It can be made of mixed material providing that the entry is predominantly made of pewter. There are no restrictions on size or what the object or group of objects might be other than they must not have been entered in previous Pewter Live Competitions. This Open approach has attracted a wide range of entries of superb quality. The entrants have been able to keep their individuality and enter designs which, we hope, will attract commercial buyers as well as the judge's eye.

The judging panel collectively have huge experience in retail, presentation and artistic interpretation in design. They will be looking not only at the final entry, but the accompanying design statement and packaging which provides vital added value in the current market.

The final judging takes place on Tuesday 20 May and the winners will be announced at the Presentation of Prizes on Thursday 22 May. During the exhibition entrants are encouraged to offer their items for sale. See pages 8-9 for more details.

1st PRIZE: £1,000

to be awarded at the judges discretion.

Additionally Certificates of Commendation will be awarded.

There are five independent awards to be awarded, each judged by the donor. See previous page for full details.

Open Competition

Roma Vincent -
studio@romavincent.co.uk
www.romavincent.co.uk

LIGHT BRINGERS

Experimentation with various heating methods led me to discover the hidden colours in pewter as well as the 'icicle' effect used in the longest of my wall mounted lamp oil candles. Apart from the specially designed glass vial and wall fixing, each wall piece is 100% pewter; varying in height from 450 to 680 mm.



James Stringer -
jim.stringer@blueyonder.co.uk

HOOK, LINE & SINKER RANGE

A range of pewter items, "Hook, Line & Sinker", inspired by a visit to Newlyn's Pilchard works. The simplicity of the forms are easily made in pewter using tooling that enables small batch production through pressing, R.T. blanking, riveting and soldering. Designed for the gift retail market in particular.



Rebecca Walklett -
rebecca.walklett1@virgin.net

CORNWALL CONTAINED

Raised Vessel on Slate. Pewter & copper, raised & riveted together and seated on a hollowed piece of natural slate, combining the natural & industrial elements of Cornwall. The copper is patinated to a choice of deep red, verdigris or turquoise blue. Size: 15cm high x 11.5cm wide.



“SHELL SECRETS” PENDANT/LOCKET

“Shell Secrets” pendant. Press formed pewter shape inspired by drawings of broken shell interiors. The pendant is in two parts hanging on a copper wire, allowing the parts to slide open/shut to contain “secrets”. The pendant is suspended on an organza ribbon. Size: 4 x 4cm.

Maria Santos-Alcantara -
mariaesantos@btinternet.com
www.mariasantosalcantara.co.uk

SEA CORAL BOX

I design and embellish mirrors and boxes with pewter foil, incorporating wood veneers, enamels and semi-precious stones. The inspiration for my designs come from the natural world and the flexibility of pewter enables me to recreate the beauty of nature in very small detail. They are functional objects for every day use, targeting interior accessory outlets and art galleries.



Open Competition

Stacey Hill -
staceyhill.jewellery@gmail.com

THE AMULET COLLECTION

A wearable collection of contemporary fashion jewellery, Inspired by ancient weaponry and medieval fighting rings alongside, the healing and protective properties that are frequently associated with crystals. Each piece is made from hand cast pewter, combined with semi precious minerals, with some pieces incorporating other metals including, silver and brass. The collection includes rings, earrings and pendants which can be worn together or individually.



Ashley Heminway -
aheminway@sussexcoast.ac.uk

“SCATTER” Jewellery pieces to include a collection of Pendants and a collection of Pins.

A plant shares its pollen with wildlife to spread its beauty. This collection is based on this principle and allows you to share components of the jewellery with your friends and loved ones. Each piece is hand made, consisting of etched pewter and enamelled copper. The wearer can decide on the configuration to personalise the piece.

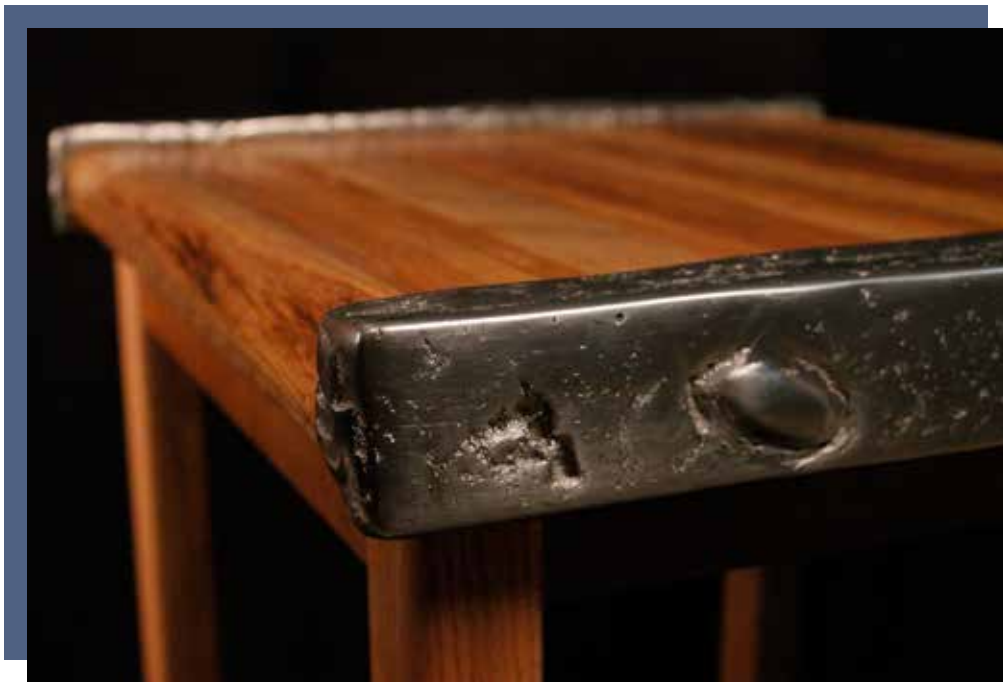
Pendant: two necklaces with a selection of interchangeable etched pewter and enamelled copper pieces that can be worn together or shared. Pins: a collection of pins to be worn in a variety of configurations. The pins will be a mixture of etched pewter and enamelled copper. Each collection will come in its own box with all the components required to create a variety of configurations.



Nadine Vanoost -
nadine@8archer.com

A SIDE TABLE MADE OF SCRAPWOOD AND RECYCLED PEWTER

This is a unique product that can be promoted as a limited edition, made in different sizes and styles. The pewter is sandcast on the wood, sanded with an angle grinder and polished: I was inspired by the wood pieces thrown out at furniture making class and the pewter experiments I was doing in my workshop: making something beautiful from scrap pieces. H 49 cm, B 55 cm, D 49 cm,



OYSTER PEWTER

BOWL: Slushcast at low temperature, sanded with an angle grinder and polished.

This is a handmade unique product, no two bowls can ever be the same. Inspiration: A beach holiday in Mozambique, gathering shells, inspired me. The bowls look like oysters. B 20cm, H 3,5 to 9cm,

Open Competition

Gill Bridgestock -
gillbridgestock@talktalk.net

THALASSA

Set of three pewter candlesticks inspired by the sea, their undulating organic form mimics waves and swells of the sea. Formed as spiral to echo tides, whirlpools. Satin finish. At home as a centre-piece, equally at home as sculptural ornaments. Viable commercially and manufacturing would make the process both faster and cheaper. H:13mm x W:10mm."



OKEANOS

Pewter fruit dish also inspired by the sea especially the large wave sucking up the beach in its 'bowl' ready to splash down above. Statement piece can stand alone or for containing fruit. Viable commercially & manufacturing would make the process faster & cheaper. Retail, gift and gallery shops. H:29cms x W:30cms x D: 10.5cms.

Fleur Grenier -
design@fleurgrenier.co.uk
www.fleurgrenier.co.uk

FLOW COLLECTION

The Flow range started with the small round vase, I wanted to make a design that was simple in style functional and an affordable price, this proved to be my most popular design. I went on to make larger version and for 2014 I have introduced 2 oval shapes to the collection. Manufacture: Pressed, soldered and polished.



Jemma Jordan -
jemsopal@googlemail.com

RANGE OF JEWELLERY PIECES

This collection of work has been inspired by my sculptural forms and the beech trees in which they sit. Made using a mixture of materials and techniques, such as pewter, gold leaf beech, lacquering and casting; each piece creates an individual wearable sculpture, combining both natural and metallic elements.



Ed Glover -
ed@gloverandsmith.com

SPITFIRE WING DESK

Glover and Smith's chief designer usually turns to nature for inspiration, but on this occasion he looked at one of the most beautiful and iconic man-made objects ever created.

The desk is ¼ scale fibreglass shell skinned with 95% tin pewter sheet with rivet detailing. The final version will also incorporate fine English walnut. The desk is approximately 4' wide.

Ella McIntosh -
mail@thisispewter.com

'UTENSIL'

'UTENSIL' is a selection from my developing new range of pewterware which combines my primary working material (and first love) pewter with brass and copper to produce these exciting culinary tools. Using an organic process of sand casting, each piece which comes out of the mould is unique and undetermined in shape, size and purpose until the addition of brass and copper provide scoops, handles, rivets etc to compliment the Pewter. UTENSIL can be decorative or functional whilst being a celebration of metal in the home and demonstrating my joy of combining technical metalwork skills with organic processes.



Open Competition

Gordon W Robertson -
info@gordonwrobertson.com

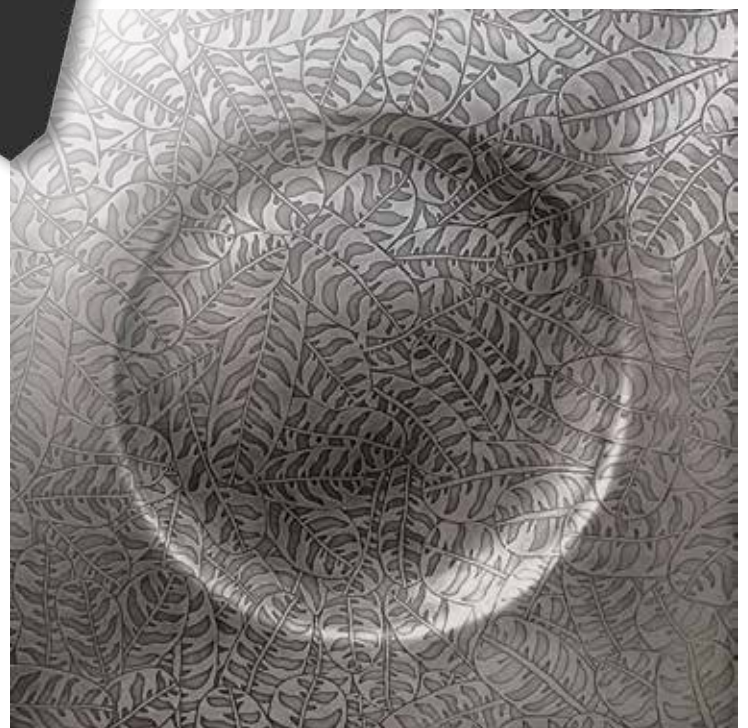
DISCOTEX

'Discotex' – A collection of etched and spun ,double,and single skinned bowls. Produced in association with A.R. Wentworth.



TIGERLEAF TABLE

'Tigerleaf' – A burnt oak framed table with etched and press formed pewter inlay. The graphics inspired by drawings made at Kew Gardens.



Trish Woods -
thwoods@sky.com
www.trishwoodsdesignmetals.com

SAKE BOTTLE AND CUPS

Inspired by pond plants, the bottle and six cups rest within a coloured and embossed pewter tray that floats gently above the table top. Three cups act as lids to the others. Although hand raised with a highly polished dappled finish the sake set could be readily manufactured commercially.



Kevin Watkins -

CHOCOLATE POT

Commissioned by Historic Royal Palaces is a reinterpretation of the Kings Chocolate kitchen at Hampton Court Palace. One of the few items listed as contents of George I chocolate kitchen were chocolate frames. These were saucers with a built in frame that stopped the tall conical shape cups from being spilt. This particular piece was inspired by a mixture of designs from the V&A museum in London, and the Metropolitan Museum of Art in New York.



Open Competition

Rhona McCallum -
rhonamccallum@hotmail.co.uk
www.rhonamccallum.com

METAMORPHIC BROOCH

This work is inspired by the powerful natural forces involved in the formation of metamorphic rock. Mimicking the intense pressure of compacting layers of rock through forging and folding pewter, I aim to create wearable fragments of a harsh landscape. In pewter and silver.



UNCONFORMITY BROOCH

This work is inspired by the powerful natural forces involved in the formation of metamorphic rock. Mimicking the intense pressure of compacting layers of rock through forging and folding pewter, I aim to create wearable fragments of a harsh landscape. pewter, silver and slate.

Robert McEwan -
designclanuk@gmail.com

HADRIAN'S VASE

I was commissioned by my mother to design a small vase to brighten up my father's breakfast tray. He is a great connoisseur of the arts. 'Hadrian's Vase' was conceived by wrapping a sheet of metal around a spinning chuck.



DECORATIVE ARTS

The students were asked to design a pewter item for the gift market. The design could be either functional, fun or merely decorative. We wanted them to look at the current market, bearing in mind retailers such as John Lewis or Heal's.

The judges are seeking originality and beauty but also innovation. Students were asked to consider what people need/want at the moment and to think about lifestyle trends. More and more people are entertaining at home: a wine chiller, a table centre piece, a modern take on the traditional vase, etc.

They also had to consider the visual benefits derived from the integration and use of colour to compliment and enhance the pewter, using additional materials as appropriate. The final item had to be made predominantly of pewter. We also asked that consideration should be given to the possibility and practicality of large-scale production.

PRIZES: 2nd Year Students First £300, Second £200 and Third £100
Additionally: 1st Prize in each section: £300 for 1st year/diploma students

Ian Darke -
imdarke@yahoo.co.uk
Carmarthen School of Creative Arts
BA (Hons) Ceramic and Jewellery

BORN UNLUCKY

This pewter and ceramic mixed media piece is a comment upon the fact that we are fundamentally all the same, no matter what nationality or religion we are born into. It reflects upon how the innocent are so often the ones caught in the crossfire of disputes.



DECORATIVE

Student Competition - DECORATIVE ARTS

Alex Mallett -
alex_mallett@hotmail.com
Truro College
FDA Silversmithing & Jewellery

HIGH VANITY

High Vanity - A compact mirror using the reflectiveness of polished pewter as a mirror surface. The inspiration comes from antiquity when vanity items were decorative objects of beauty and craftsmanship and also carried votive and ritual associations. The intention is to make a mirror to be looked into but also looked at, held and touched.



Rebecca Blackman -
bekiblackman@btinternet.com
South Devon College
FdA 3D Design (Contemporary Crafts)

STRING MIRACLE

Pewter Goblet with bespoke glass saucer inlaid with pewter strands. The form of the goblet takes on the qualities of a wrapped and bounded texture which is reflected in the visual qualities of the glass.

Rebecca Marsters -
rebeccamarsters@yahoo.com
Sussex Coast College
Foundation Degree Contemporary Crafts Practice

STONE AGE – PEWTER PEBBLES

Inspired by ancient techniques such as raising and hand forming. I took pebbles gathered from my local beach and rather than hammers used them directly to raise a collection of small handheld vessels.



Amanda Corrigan -
Amanda21868@aol.com
Truro College
FDA Silversmithing & Jewellery

CORNISH COTTAGES

Cornish Cottages ...Having been borne and lived in Cornwall for most of my life, I've grown up amongst some of the most beautiful and quaint cottages in the country. This was enough inspiration to design my 'quirky take' of these idyllic dwellings, which I turned into little brooches, a perfect holiday memento.

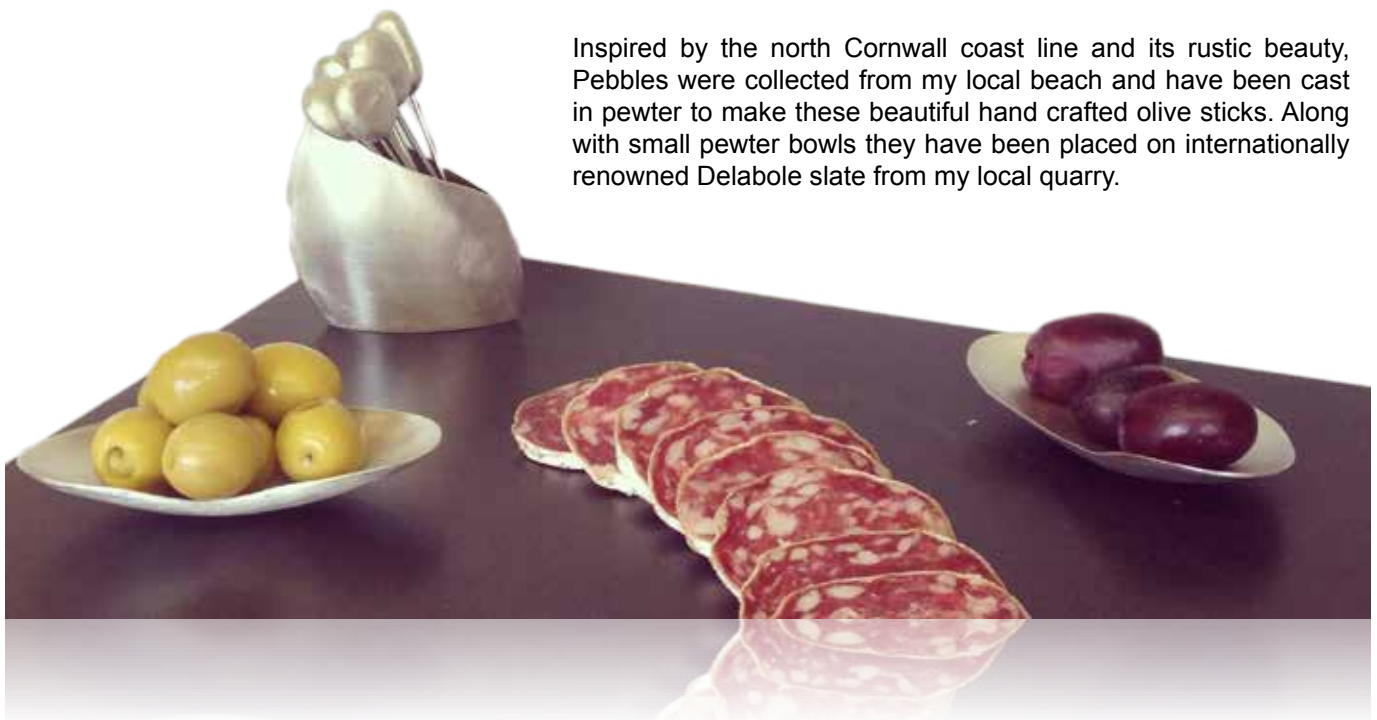


DECORATIVE

Chloe Michell -
cm137679@ghs.truroopenwith.ac.uk
Truro College
FDA Silversmithing & Jewellery

BODMIN MOORISH

Inspired by the north Cornwall coast line and its rustic beauty, Pebbles were collected from my local beach and have been cast in pewter to make these beautiful hand crafted olive sticks. Along with small pewter bowls they have been placed on internationally renowned Delabole slate from my local quarry.



Student Competition- DECORATIVE ARTS

Elaine Partington -
elaine.partington1@virginmedia.com
Sussex Coast College
BA (Hons) Art and Design

SEA SHORE SPOONS

First and foremost I am a metal worker, seeing texture and form in everyday things, these influence the pattern and fabrication of my work. This collection combines forged and cast pewter with found materials from the shoreline where I live.



Katrina Hood -
katrinahood@btinternet.com
Sussex Coast College
Foundation Degree Contemporary Crafts Practice

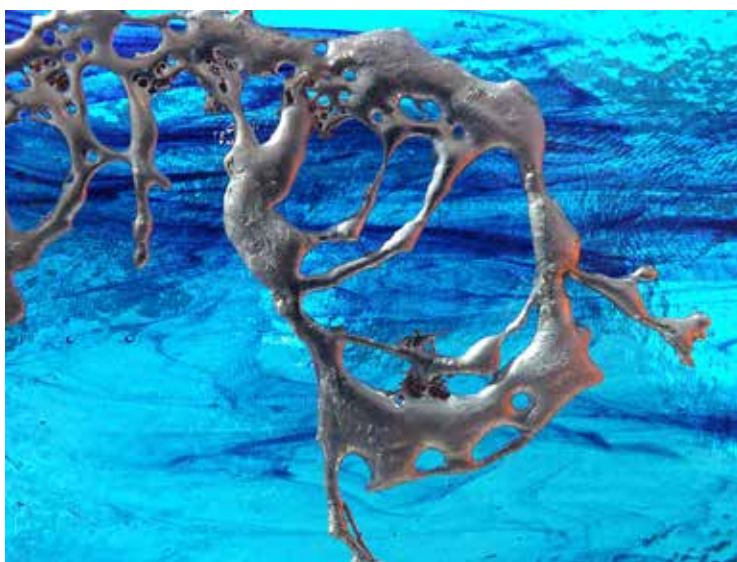
MARBLED GLASS AND PEWTER SCULPTURE

The design was inspired by patchwork quilting and the work of Fulvio Bianconi. The clean flowing line of the pewter sculptured frame would compliment any home or office. The sculpture was hand made and could be enlarged as an installation.

Isabelle Moriarty -
moriarty92@hotmail.com
Sussex Coast College
BA (Hons) Art and Design

STRATA

My work revolves around geological patterns. I am combining pewter and glass in a hot state. Initially I will cast the pewter embellishment and then fuse it to the glass by bringing it up to 300° in the kiln. To ensure the pewter does not run uncontrollably, I will create a plaster/quartz barrier, which will be removed after firing.



Charles Conreur -
charlesconreur@hotmail.fr
South Devon College
FdA 3D Design (Contemporary Crafts)

WINTER LAKE

The bone china and pewter bowl reminds us of the frozen edge of a mountain lake, where we are able only to survive at its centre when the ice closes in. The centre of the bowl is a metaphor of this and the pewter the ice.



DECORATIVE



Jonathan Daniels -
Jdmetalsmith@btinternet.com
Plymouth College of Art and Design
BA (Hons) Jewellery & Silversmithing

‘A LITTLE TWIST’

A hand raised pewter vessel with a simple yet effective repousse design. The top edge has been cut to give the impression of separate panels. The interior has been leafed with 14ct white gold to help give the whole piece a little lift.

Student Competition- DECORATIVE ARTS

Natasha Elkins -
elkinsn13@hotmail.co.uk
Sussex Coast College
Foundation Degree Contemporary Crafts Practice

CERAMIC AND PEWTER MUSHROOMS

Inspired by nature and its surprising elements, I have made toadstools/mushrooms as a single example of this occurrence. The processes used are a mixture of ceramic glaze, casting and etching, the stalks end in a fairly sharp point so the mushrooms can be used as decoration for garden pots.



Amanda Corrigan -
Amanda21868@aol.com
Truro College
FDA Silversmithing & Jewellery

LAVA BOWL

The capacity of pewter to be turned into molten liquid at a reasonably low temperature amazed me. I was drawn to how the pewter solidified once poured over an innate object, thus forming the wondrous reflective texture inside, whilst retaining the appearance of flowing lava on the outside.



INTERIOR, ARCHITECTURAL & FURNITURE

Pewter offers students tremendous potential to design contemporary interior fixtures and fittings - from handles and hooks, shelves and brackets, to light fittings, lamp bases and bathroom accessories. Today's homes adopt a variety of 'looks' - minimalist urban loft-living, country-style utility, revivalist or traditional - and most successful businesses have a corporate look which inspires confidence through its professionalism. Pewter fixtures and fittings can enhance them all.

The students were asked to design a one-off item or a range of pieces which show originality and take into account today's trends in interior design.

PRIZES: 2nd Year Students First £300, Second £200 and Third £100
Additionally: 1st Prize in each section: £300 for 1st year/diploma students

ARCHITECTURAL



Victoria Andrew -
va156252@falmouth.ac.uk
Falmouth University
Contemporary Crafts

SLUMP AND GRIND

A slumped glass vessel with a cast pewter rock, inspired by negative spaces within the landscape.

Student Competition- ARCHITECTURAL

Jean Queree -
jeanque@hotmail.co.uk
Sussex Coast College
Foundation Degree Contemporary
Crafts Practice

DECORATIVE FEATURE LIGHT

A decorative, feature light to be hung as a focal point, either singly or more dynamically in a group of three at varying heights. The supporting metal frame has a hand-felted cover, over-stitched with overlapping thin pewter sheets which have been hand-embossed and patinated to resemble birch bark.



Katie Ghersie -
katiana333@hotmail.co.uk
South Devon College
FdA 3D Design (Contemporary Crafts)

RAINFALL

Lightshade constructed from ribbons of hand wrought pewter using fold forming techniques. The pewter pieces interlock to form a shower of light and movement, reflecting form. These pewter ribbons are interspersed with lengths of beads through the centre catching the light, reminiscence of raindrops in a shower.

FASHION - FROM JEWELLERY TO THE TOTAL LOOK

Today's High Street is awash with jewellery and accessories, few of which are made of pewter. We challenged the students to come up with designs which could promote pewter either as an accessory or part of the total look. Taking this into account, they were asked to design a piece or range of jewellery, which would appeal to young people to compliment today's free-form fashion. Similarly to the Decorative Arts category students were encouraged to keep the commercial price relative to the intended buyer.

PRIZES: 2nd Year Students First £300, Second £200 and Third £100
Additionally: 1st Prize in each section: £300 for 1st year/diploma students



Hanny Newton -
hannynewton@hotmail.com
Falmouth University
Contemporary Crafts

BESPOKE HAND EMBROIDERED PEWTER BOW TIES

This collection of bespoke silk bow ties are each hand embroidered with Swedish pewter thread (96% pewter, 4% silver). They offer a platform for pewter within the male fashion accessory market.

Sangni Chai -
chaisangni@hotmail.com
London College of Fashion
BA (Hons) Fashion Jewellery

MUSIC MEMORY

I was inspired by Music memento. I select the elements from music box and Pandora story, I like the idea from Pandora box, which contained all the evils of the world, just like music box contained music, different people have different feeling for music, music box could be memento. I used Perspex as my part of my design represent as a story container.

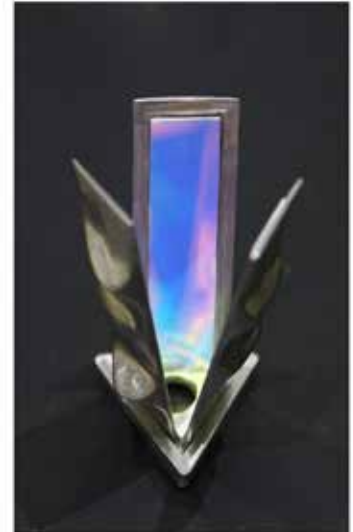


Student Competition- FASHION

Juefang Yang -
juefangyang@gmail.com
London College of Fashion
BA (Hons) Fashion Jewellery

DREAM HOLDER

This piece reflects an experiment of materials, combining melting pewter with plastic sheets, attention to design the vision, which referring the images of brain activities while people dream. The idea is to create the feeling of holding a dream and watching it.



Rachel Lam Wai Yan -
awlrachel@gmail.com
London College of Fashion
BA (Hons) Fashion Jewellery

CAUGHT IN THE MOMENT (SET OF 3)

A set of three pendants was made with the inspiration of capturing the moment. The unique shape was created when liquid was poured into a plastic bag, then they were cast with pewter and clear resin. A progress of material changing is shown within the three pieces, from pewter towards resin, showing the weight difference.



Shannon Hayes -
shannonisobelle93@yahoo.co.uk
London College of Fashion
BA (Hons) Fashion Jewellery

THE SÉANCE

Inspired by Victorian spiritualism, 'The Seance' is a quirky take on the Victorian obsession with the dead. This necklace is made from hand painted laser cut hands and includes a pewter planchette & beads, as well as a kooky movable hand closure.



Cara Duerden -
cara.duerden@blueyonder.co.uk
London College of Fashion
BA (Hons) Fashion Jewellery

VOIDS

This piece consists of a collection of broken and unwanted objects that have suffered a loss: the loss of their function or the loss of their owner. I have filled these empty spaces with pewter, giving the objects a new identity. My designs have also been influenced by the way in which broken objects are displayed and hung in museums using metal rods, which form cages around the objects. These clean lines are in contrast to the organic shapes of the broken fragments and curved forms.



Shuangshuang Wang -
s.wang0217@hotmail.com
London College of Fashion
BA (Hons) Fashion Jewellery

JOKER FACE CLUTCH

I was inspired by playing cards. I select the elements from clubs, diamonds, spades, hearts to make my chains of the clutch. I especially love the idea from Joker, I compared that with the Joker from Batman, and created my own shape of a joker face. And that's the shape and pattern for my clutch.



Student Competition- FASHION

Miriam Adams -
miriam.lucy33@hotmail.co.uk
Truro College
FDA Silversmithing & Jewellery

BEAUTIFUL RAIN

Sometimes the rain can be a real pain, it can cancel our plans or make a bad day worse. But stop and look, it's stunning, thousands of tiny droplets rushing out of stormy clouds. Raindrops are beautiful, shiny just like pewter. Dropping molten pewter into water forms perfect raindrops, which inspired my design.



Caroline Sax -
cassax56bex@hotmail.co.uk
Sussex Coast College
Foundation Degree Contemporary Crafts Practice

BUTTONS

The buttons were conceived in response to my love for the beach where I live. The designs have been taken from drawings inspired by pebbles..... They have been salt water etched and hand formed individually, before being patinated to enhance the design. Each button is different within a common theme.

Hannah Blore -
bee333@hotmail.co.uk
Sussex Coast College
Foundation Degree Contemporary
Crafts Practice

THREAD

My pieces circulate themes around ritual journeys and lines. The pieces were created by wrapping thread around fabric to create a form and casting this shape. I like that when the pewter is cast it can pick up every detail of the fabric.



PEWTER LIVE 2014

Louise Ann Cooke -
louiseanncooke@hotmail.com
Sussex Coast College
Foundation Degree Contemporary Crafts Prac-
tice

THE BEAUTY OF DECAY WITHIN NATURE

My inspiration for my pendant is the beauty of a decaying physalis alkekengi. They have a certain fragility and delicacy about them while in their skeleton form, yet hold a berry hidden within that's truly beautiful. I felt the best way to show my passion for this beautiful plant was to etch on pewter.



Kristiina Ploom -
kristiina.ploom@gmail.com
Sussex Coast College
Foundation Degree Contemporary Crafts Practice

SHAPE & FORM COLLECTION

Inspired by geometric and asymmetric shapes, my work takes a form of contemporary sculptural jewellery. I have designed a small collection using light and translucent acrylic to complement the pewter. Pieces can be produced in various colour combinations to suit each wearer.



Claire O'Sullivan -
claireosullivan65@icloud.com
Truro College
FDA Silversmithing & Jewellery

CARNIVAL COFFEE

I must get on with the designs for Pewter Live, but first I'll have another coffee....." I really love coffee, I love the taste, I love the smell and I love the bean. A homage to the wonderful coffee bean... Individual beans are cast and strung on carnival coloured threads.

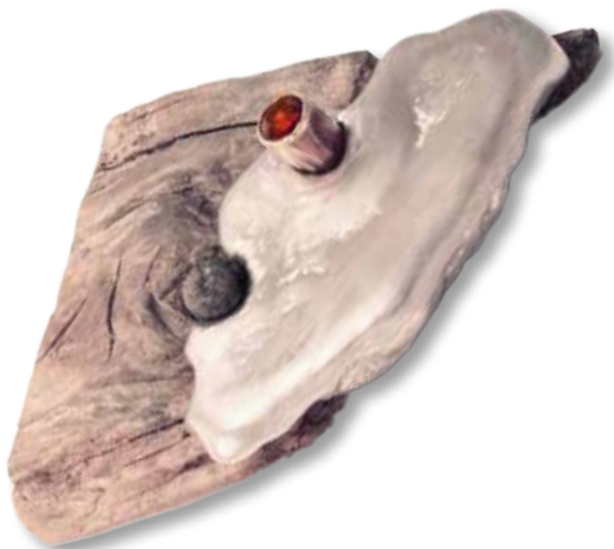


Student Competition- FASHION

Ione Church -
ionechurch@hotmail.co.uk
South Devon College
FdA 3D Design (Contemporary Crafts)

ATROPA BELLADONNA

Cloche Hat, inspired by the forms, colours and underlying menace of the deadly nightshade flower. Seductive shiny pewter contrasts against a dark and seductive hand embroidered and beaded head base. The purple is reminiscent of the colour of the flower.



Alex Mallett -
alex_mallett@hotmail.com
Truro College
FDA Silversmithing & Jewellery

OF RHYME AND REASON, BROOCH

Of Rhyme and Reason – The pewter laps and eddies around sun bleached and weathered driftwood, like a chill winter tide frothing over the hoary rocks. And struggling to the surface a forgotten treasure that glints fiery red in the dawn sun, searing away the foamy rime.

Jodie Barnard -
jodiebarnard@live.co.uk
South Devon College
FdA 3D Design (Contemporary Crafts)

BLOSSOMS NECKLACE AND RING

Inspired by May time Blossoms and Japanese material aesthetic and colours. The warm coloured hand embossed copper flowers interplay with the cool structures of the pewter. The piece articulates, mimicking blossoms blowing in the wind.



Elisabete Oliveira -
lizoliveira@myself.com
South Devon College
FdA 3D Design (Contemporary
Crafts)

NATURAL BEAUTY

These pieces are inspired by nature and the beauty of natural forms that our environment provides us with everyday. "Natural Beauty" is not only inspired by nature's natural forms, it is also inspired by women's delicate sensuality. It is a set of three pins or as a single pin, the main body is pewter with a silver pin where a beautiful yellow jade gemstone is placed on.



Yiqiu Zhang -
zhangyiqiu1008@gmail.com
London College of Fashion
BA (Hons) Fashion Jewellery

MOSAIC JIGSAW

People sometimes use puzzles to create a memory, maybe an unforgettable moment. I was very interested in mosaic which could be worked on the surface of masjid. They used different colours to make an image on the wall and ground. I was inspired and learned to use these elegant colours with pewter. I want people to have fun with my mosaic jigsaw necklace.

Your Guide to British Pewter

What is Pewter?

Pewter is mainly Tin alloyed with other metals added to allow the material to be worked and formed. The Tin content will vary but is generally higher than 91.5%. Pewter was introduced to Britain by the Romans and has been used to produce objects both useful and desirable ever since. Today's British pewter industry is a dynamic and traditional one combining fine design and ancient skills to produce objects to be treasured and enjoyed.

How do I know it's British Pewter?

Only British pewter is allowed to carry the marks illustrated below, these are found stamped into each piece individually or as part of a collection of marks known as the "touchmark".

The symbols to look out for are:



The ABPC mark, which stands for the Association of British Pewter Craftsmen whose members, must make their objects to quality standards of craftsmanship and alloy composition.



The Seahorse mark is only allowed for use by ABPC members on their finest wares, the emblem comes from the coat of arms of the Worshipful Company of Pewterers in the City of London who have been permitted to police the industry since receiving a royal charter in 1474.



The EPU mark of the European Pewter Union, the composition of pewter conforms to BS EN611 parts 1 and 2 and the number in the centre is registered to a particular factory or firm, all UK numbers begin with a 3.

Association of British Pewter Craftsmen
Unit 10, 1st Floor, Edmund Road, Sheffield, S2 4ED.
Telephone: 0114 2527550

Past Pewter Live winner Gordon W. Robertson won a Queen Elizabeth Trust scholarship in 2013. This article gives an account of the development of his current project; a collaboration with A.R. Wentworth.

In May 2013 I visited A.R. Wentworth to discuss with Richard Abdy how I could develop my ideas and how best to use the funding from QEST. During the visit, I spent some time on the factory floor observing the various processes and techniques used to manufacture their products.

I was interested in the spinning process, a very traditional skill wherein a steel/nylon form is attached to a lathe and a pewter disc is pushed onto the form with a wooden or steel former thus achieving the required shape. Before this project, my work had either been press formed or hammered so I was curious how the spinning process would affect the etched surfaces that I make and whether it would distort or damage the surface since a fair amount of force is required to push the metal onto the form and as pewter is a fairly soft material I guessed it was unlikely to work.



*'Ondulato' spun pewter bowl by Gordon.
Manufactured at A.R. Wentworth.*

I sent a pre-etched disc of pewter to A.R. Wentworth and they tried spinning it on one of the forms they already had; the results were positive, there didn't seem to be any distortion or damage to the surface. I'd purposely used a regular geometric pattern on the metal as I thought that would best show any distortion, the resulting bowl was fairly shallow but I reckoned that the etched pewter would withstand being pushed a bit further.

I decided to go ahead and design my own forms using a deeper bowl shape along with a lip; I've called this shape 'Orbital' because it has a planetary form. I sent the plans to Richard and he, in turn, returned the pewter bowls spun from the forms that I had designed. Measuring 22cm and 10.5cm in diameter, they were near-perfect so I set about planning how to etch the pewter discs before they were spun, initially to determine where the bowl form met the lip; I used a simple concentric circle pattern to work this out.



*Above: Her Royal Highness The Countess
of Wessex with Gordon Robertson at Pewter Live 2013.*

I spent four days at A.R. Wentworth in August and took with me pre-etched metal discs that I'd prepared in my studio. I'm very pleased with the results we achieved; the bowls that were spun showed no distortion or surface damage.

One of the bowls we made was CNC milled (deep engraving) from a computergenerated pattern I'd designed. I'm still not sure about using this technique since I found the result quite mechanical and alien to me; apart from the physical spinning of the metal, I had little or no hand in its making. I tried hand-cutting the edge to give it a bit of life but it still didn't quite work...

I've shown it to some valued critics of my work and it's drawn mixed reviews...from zero rating to fabulous? I need to work out how to utilize this process so that it's more to my liking.

I returned to A.R. Wentworth in September, this time more focussed and with a series of etched discs that I made wherein the pattern would be either contained inside the bowl form or solely on the edge. I also made all over patterns to see how they would look.

My two visits in October and November had been very productive and included producing bigger one-off pieces, a casting project, etched limited edition hip flasks and goblets. I'm particularly interested in utilising some of the traditional objects that A.R. Wentworth produce and giving them a contemporary makeover with the view to putting some of the ideas into production.

I continue to liaise with A.R. Wentworth and look forward to further collaborations.

Gordon W Robertson
info@gordonwrobertson.com
www.gordonwrobertson.com
January 2014



Brian Swift spinning one of Gordons' designs at A.R. Wentworths factory in Sheffield.



'Spiral' etched spun pewter bowl by Gordon. Manufactured at A.R. Wentworths.

The Queen Elizabeth Scholarship Trust (QEST) is the Royal Warrant Holders Association's charity, created to fund the education of talented craftsmen and women through traditional college courses, apprenticeships or one-on-one with master craftsmen. To date QEST has awarded more than £2.2 million to 319 gifted individuals aged between 17 and 50+. QEST is recognised as having made a major contribution to ensuring the continuation of the pool of talent in the UK and reflects the excellence of British craftsmanship as symbolised by the Royal Warrant of Appointment.

Scholarships from £1,000 up to £18,000 are awarded twice a year. To find out more and apply on line, visit the QEST website at: www.qest.org.uk



PEWTER LIVE 2013

Last year's winners and highlights

The Open competition for 2013 was to design a pewter memento or souvenir. We had a wide range of innovative designs and the student competition attracted entrants from eleven universities.



Above: Her Royal Highness The Countess of Wessex, with the winners, the Master, Hugh Mullens and chairman of judges Sebastian Conran.

OPEN COMPETITION: First Prize £600: Gordon Robertson for IL SOLE E LA LUNA
Joint Second Prize £200: James Stringer for TIME FOR A TEA PARTY? I'M LATE!
Robert McEwan for TURBINE CLOCK



Above Left: 'Time for a Tea Party? I'm Late!' by James Stringer which won second prize. right: 'Il Sole E La Luna' by Gordon W Roberston which won first prize in the Open Competition and the Alexander and Patricia Neish Award.

PEWTER LIVE 2013



STUDENT COMPETITION - DECORATIVE ARTS

Commended Rebecca Price of Buckinghamshire New University for 'YALU NAPKIN RING'

Commended Loucinda Nims of Buckinghamshire New University for CHAMPAGNE ICE BUCKET

(above right) Third £100 Claire Hughes of Buckinghamshire New University for 'JEWELLERY FOR THE CHRISTMAS TREE' (above left)

Second £250 Anna Rennie of Truro College for 'A BIRD IN THE HAND...' (above right)

First £350 Jonathan Daniels of South Devon College of Arts for THAMES VESSEL



STUDENT COMPETITION - INTERIOR, ARCHITECTURAL & FURNITURE

Third £150 April Paterson of Buckinghamshire New University for STACKED TABLEWARE PENDANT LIGHT (above left)

Second £350 Jamie Collins of Falmouth University for PEWTER CHAMBER STICK LAMP (above right)

First £500 Elise Head of Buckinghamshire New University for HERB CONTAINER

Last year's winners



STUDENT COMPETITION -

FASHION – FROM JEWELLERY TO THE TOTAL LOOK

Commended Matilda Sandys-Renton of Camberwell College of Arts for TOOLS OF A DRESSMAKER

Commended Kimberley Lewis of Carmarthen School of Creative Arts for CARTREF CUDD

Third £100 Joanna Bury of Truro College for 'LACE TATTOO' (above right)

Second £250 James Dare of South Devon College for 'LIFE SAVER' BELT ATTACHMENT

First £350 Joanne Hathaway of South Devon College for "SCRAP TO SEDUCTION" -PENDANT & RING SET (above left)



Giftware Association Prize – Presented by Michael Papé, Ravensden Plc

Loucinda Nims of Buckinghamshire New University for CHAMPAGNE ICE BUCKET (above right)

The Alexander and Patricia Neish Award– Presented by Mrs Patricia Neish


Gordon Robertson - IL SOLE E LA LUNA

City & Guilds – Presented by Catherine Bush

Joshua Charles Ison of South Devon College for WRAPPED' VESSEL (above left held by Catherine Bush of City & Guilds)

Partners in Pewter

Give something original this time

Phone: 01628 485764 

www.partnersinpewter.co.uk



Pewter Manufacturers- LINKS

Pewter Live is a fantastic platform for the entrants taking part and also the manufactures taking part in the Shop@PewterLive. For more details of pewter manufactures and to find out the results of the competition after the event go to our website: www.pewterers.org.uk.

Left screen-shot of the gallery online.

The Association of British Pewter Craftsman also has a detailed web site which gives information on the trade, including contact details for pewter manufacturers, videos and more. 'The Pewterer' is an e-magazine, produced by Court Assistant Alan Williams, devoted to pewter and is updated with regular articles on the trade and history of pewter. The Company is regularly involved with the media with coverage for Pewter Live, loaning items to exhibitions and collaborating with the media.

About Pewter - Manufacturers Gallery The Worshipful Company of Pew



Contacts: www.pewterers.org.uk - for Manufacturers, Pewter Live and Company information
www.britishpewter.co.uk - The Association of British Pewter Craftsmen
www.thepewterer.org.uk - E-magazine trade and history of pewter.
www.pewtersociety.org - Details on pewter marks and collecting

LIFE'S KITCHEN

A LOVE OF FOOD &
A SENSE OF OCCASION

You have an event to deliver and you need a partner to help you do so. A partner that will listen to your brief, to your likes and dislikes and to truly take the time to understand what is important to you and your guests.

We are delighted that Pewterers' Hall is part of the family of Livery Halls within the Life's Kitchen Portfolio. Life's Kitchen produce a variety of events in all our venues from small breakfast meetings, summer receptions to elaborate gala dinners.

LIFE'S KITCHEN LTD

0800 915 0978

INFO@LIFESKITCHEN.COM

WWW.LIFESKITCHEN.COM



The Company is pleased to offer for hire parts of its imposing Hall in the City of London for special occasions. Few venues in the capital can rival a Livery Hall for prestige, splendour and an atmosphere of heritage.

Ideally situated in the heart of the City and with its flexible suite of air conditioned rooms, Pewterers' Hall is a wonderful backdrop for meetings, conferences and presentations. The Hall has a brand new state of the art Audio Visual suite. Please contact us for more details.

PEWTERERS' HALL

Conference & Banqueting



The Worshipful Company of Pewterers
Pewterers' Hall, Oat Lane, London, EC2V 7DE
020 7397 8192 beadle@pewterers.org.uk

www.pewterers.org.uk

STATEMENT OF DESIGN RIGHTS

The works shown in the exhibition and in this catalogue are required by the Worshipful Company of Pewterers to be original works, but the Company does not make any warranty in this regard.

Unregistered Rights. All the works shown in this catalogue and exhibited at Pewter Live 2014 at Pewterers' Hall, London EC2V 7DE on 20th-22nd May 2014 may be protected automatically by Unregistered Design Right for 10 years in the UK as provided by the Copyright, Designs and Patents Act 1988 and for 3 years in Europe as provided by EC Council Regulation No. 6/2002 on Community Designs, subject to fulfilment of the requirements for qualification for UK Design Right protection and/or EU Unregistered Design protection. Unregistered Design rights protect only against copying by a third party.

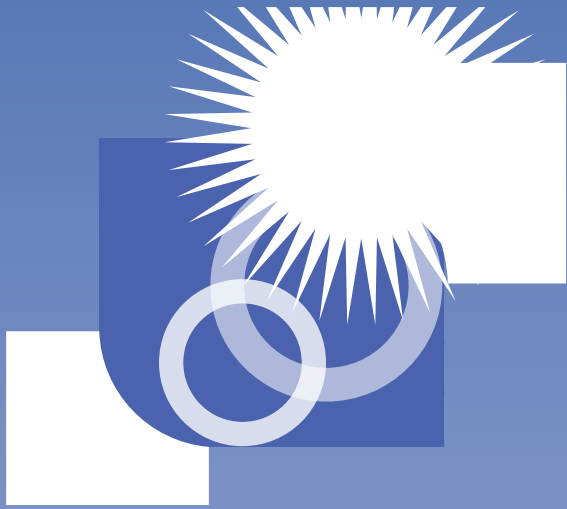
Registered Rights. EC Council Regulation No. 6/2002 also provides that an application for EU Registered Design may be submitted for any of these designs so exhibited that fulfil the requirements for EU Registered Design protection within 12 months of the date of first exhibition of the design, as long as the exhibition was the first disclosure of the design otherwise than in confidence. The application would receive the filing date of the actual date of submission of the application but the exhibition disclosure will not be taken into account for the purpose of assessing qualification for Registered Design protection. Registered Design protection is also available in the UK only.

Further Details. Advice regarding asserting Unregistered Design Rights and the procedure involved in applying for the Registered Design Rights can be obtained at no charge by the authors of the designs (or with their written permission) by application to The Clerk, The Worshipful Company of Pewterers, Pewterers Hall, Oat Lane, London EC2V 7DE by post or email to clerk@pewterers.org.uk. These details are kindly provided by Kilburn & Strode, 20 Red Lion Street, London WC1R 4PJ.

Copyright A Ruhmann

INDEX OF ENTRANTS

- | | | | |
|---------------------|--------------------|-------------------------|--------------------|
| Adams, Miriam | - FASHION 35 | Mallett, Alex | - FASHION 37 |
| Andrew, Victoria | - ARCHITECTURAL 30 | Marsters, Rebecca | - DEC. ARTS 25 |
| Barnard, Jodie | - FASHION 37 | McCallum, Rhona | - OPEN 23 |
| Blackman, Rebecca | - DEC. ARTS 25 | McEwan, Robert | - OPEN 23 |
| Blore, Hannah | - FASHION 35 | McIntosh, Ella | - OPEN 20 |
| Bridgestock, Gill | - OPEN 19 | Michell, Chloe | - DEC. ARTS 26 |
| Chai, Sangni | - FASHION 32 | Moriarty, Isabelle | - DEC. ARTS 27 |
| Church, Ione | - FASHION 37 | Newton, Hanny | - FASHION 32 |
| Conreur, Charles | - DEC. ARTS 28 | O'Sullivan, Claire | - FASHION 36 |
| Cooke, Louise Ann | - FASHION 36 | Oliveira, Elisabete | - FASHION 38 |
| Corrigan, Amanda | - DEC. ARTS 29 | Partington, Elaine | - DEC. ARTS 27 |
| Daniels, Jonathan | - DEC. ARTS 28 | Ploom, Kristiina | - FASHION 36 |
| Darke, Ian | - DEC. ARTS 24 | Queree, Jean | - ARCHITECTURAL 31 |
| Duerden, Cara | - FASHION 34 | Robertson, Gordon W | - OPEN 21 |
| Elkins, Natasha | - DEC. ARTS 29 | Santos-Alcantara, Maria | - OPEN 16 |
| Ghersie, Katie | - ARCHITECTURAL 31 | Sax, Caroline | - FASHION 35 |
| Glover, Ed | - OPEN 20 | Stringer, James | - OPEN 15 |
| Grenier, Fleur | - OPEN 19 | Vanoost, Nadine | - OPEN 18 |
| Hayes, Shannon | - FASHION 33 | Vincent, Roma | - OPEN 15 |
| Heminway, Ashley | - OPEN 17 | Walklett, Rebecca | - OPEN 16 |
| Hill, Stacey | - OPEN 17 | Wang, Shuangshuang | - FASHION 34 |
| Hood, Katrina | - DEC. ARTS 27 | Watkins, Kevin | - OPEN 22 |
| Jordan, Jemma | - OPEN 20 | Woods, Trish | - OPEN 22 |
| Lam Wai Yan, Rachel | - FASHION 33 | Yang, Juefang | - FASHION 33 |
| Mallett, Alex | - DEC. ARTS 25 | Zhang, Yiqiu | - FASHION 38 |



utility funding

Utility Funding is pleased to support
Pewter Live 2014
Congratulations and good luck to all participants

Utility Funding
enables smart metering of electricity and gas
supplies to monitor and control energy consumption
and to reduce carbon dioxide emissions

www.utilityfunding.com

Utility Funding Limited
Brewery House
34 -44 Gigant Street
Salisbury, Wiltshire
SP1 2AP



The Worshipful Company of Pewterers
Pewterers' Hall, Oat Lane, London, EC2V 7DE

Telephone 020 7397 8190 emc@pewterers.org.uk www.pewterers.org.uk