



THERE'S A
HERO
IN US ALL

THANK YOU FOR REGISTERING YOUR INTENT
TO DONATE YOUR BODY TO SCIENCE

No Cost Cremation



Science Care®

800.417.3747

www.sciencecare.com

Thank you for choosing to register with Science Care

You have joined an amazing community of people committed to changing the world through the advancement of medicine. Your gift has the ability to not just improve lives, but save lives.

It is our wish the information contained in this packet will help to show you the impact your gift can have on the world. We encourage you to educate your loved ones on your wish to donate, and want to ensure you complete all steps in your registration process to include signing self-consent, if possible.

We have provided additional cards in this packet for you to share with your family, friends and community on the option of body donation to science. **It is through awareness that our program will continue to grow and positively impact not just you, but your loved ones and all of society.**

COVID ALERT

The scale of the COVID-19 pandemic has introduced unprecedented challenges to everyone across the globe. As a donor program, the Science Care Team has witnessed the devastating impact to our donors, their loved ones, our employees, our families, our healthcare professionals, and our communities firsthand. Our sincere condolences and thoughts are with the victims and loved ones that have been affected.

One of the many challenges we've had to navigate as a donor program, which links the precious gift of donation with medical research and educational programs, is the tremendous impact on the placement of donated tissues. Our healthcare professionals' focus has appropriately been primarily on saving lives, as well as the treatment and care of the living. This has impacted the research and educational work with which they have been able to participate. The limitations on travel, logistics, availability, and capacity have played a very large role in how our donor program has had to adjust for both our donors and our medical professionals.

Although we are very proud we have been able to continue accepting donors into the Science Care Program throughout the pandemic, we know there are donors and loved ones who have not been able to move forward with the gift of donation due to exposure or death directly related to COVID-19. Our team strives to place every donor with available programs, but the current state of the industry has hindered our ability to place any donated tissues with those exposures. The health, safety, and wellbeing of our employees, our medical and research professionals, and our communities is our number one priority. For this reason, we will continue to err on the side of caution, deferring donors with known risk or uncertain risks. We will stay committed to leading a safe, compliant, high-quality, ethical program with the highest level of integrity. We are very optimistic our medical community will prevail, and we will be able to adjust some of our exclusion criteria as the industry allows.

We encourage anyone considering donation to make their wishes known by signing up on the Science Care Donor Registry, and proactively discussing with their loved ones their wish to donate. It is important to note, registration does not guarantee acceptance. Donation is conditional upon current medical suitability as defined by Science Care and the ability to place the donation with current medical research and education projects at the time of passing. This honors the intent of the donation and safely serves the needs of the medical community. We encourage all registrants with our program to establish an alternate plan, and to discuss with their loved ones their wishes if donation is ultimately not possible at the time of passing. Science Care's exclusions are outlined on our website at www.sciencecare.com. Our hearts are heavy for the donors we are not able to accept due to risk or lack of placement with current programs. We know this news comes at a very difficult time for their loved ones. It is our goal to assist in any way possible at their time of need.

Since the onset of COVID-19, Science Care has continued to monitor the progression of the virus, as well as updates from the Centers for Disease Control (CDC) and all state and county level guidelines. Science Care's mission to make a difference in the world by helping to improve the quality of life for future generations has never been more important. We will continue to honor the gift of body donation to science by serving our donors and clients with an intentional focus.

A Letter from Science Care

Since founded in 2000, Science Care has been established on public trust.

Our program's foundation is our culture of respect for donors, their loved ones, our employees, and the communities that are home to our operations. We have one opportunity to honor a donor's last wishes, and we take that responsibility very seriously.

During our years as a public trust program, we have witnessed the unfortunate outcomes of a few unethical individuals and organizations, who have threatened the integrity and moral perception of the entire industry. These organizations' actions are not a reflection of the industry, but a reflection of unprincipled individuals who took advantage of donors and their loved ones at an extremely difficult and vulnerable time. As the industry leader, our hearts extend to any donor family touched by this deception.

The actions of these organizations, coupled with sensationalism in the media, raises questions for donors and their families. Our goal is to be a resource to answer any questions you might have and provide you with peace of mind in your decision to donate to science.



Science Care partners with medical researchers and educators who change the world for all of us. Because of this, donors who contribute to the Science Care program impact many parts of our lives. **To put this into perspective, if you or someone you know has ever taken a prescription medication, used a skin product, had an orthopedic implant, a minimally invasive surgery, or even been a transplant recipient, our donors have helped and continue to help train and develop these areas of medicine.**

I can speak for all of us when I say, our donors are the unsung heroes that live on.

As the industry leader, we are responsible for continuing to establish standards for the non-transplant tissue banking

! Important

Donation is conditional upon medical suitability criteria at the time of passing. This honors the intent of donation and safely serves the needs of the medical community. Establishing an alternate plan is advisable, as well as informing your loved ones of your wishes should donation not be possible.

industry that protect our donors, their loved ones, our clients, and our communities. Recently, we participated in movements to mandate licensing and accreditation for non-transplant tissue banks in Arizona, Colorado, and Florida. The Science Care team will continue to support and build regulations that improve our industry. We want you to be proud of our program, our industry, and all that we stand for.

We are fully committed to our donors, donor families, clients, and the larger industry. Thank you for your continued support of our program.

Tricia Hammett
CEO & PROGRAM DIRECTOR

Non-Transplant Donation and Organ Donation Comparison

YOU CAN REGISTER YOUR INTENT FOR **BOTH** NON-TRANSPLANT DONATION & ORGAN DONATION

Science Care always encourages life-saving donation prior to body donation to science. You will need to register for both programs separately, and let your loved ones know of your wish to donate to both organizations.

Body Donation to Science

Organ & Tissue Donation

0.3% of people pass in a way that allows for organ donation

Non-Transplant Donation

96% of people accepted in the Science Care program are placed with educational and research programs *

Options to Register	Driver's License Online Registry with your local state	CALL 800-417-3747	ONLINE REGISTRY www.sciencecare.com/join
Description	Organ donation is the process of surgically removing an organ or tissue from one person (an organ donor) and placing it into another living person (the recipient). Transplantation is necessary because the recipient's organ has failed or has been damaged by disease or injury.	Non-Transplant Anatomical Donation Organizations, or NADOs, recover human tissue donations which are NOT intended for transplant into a living patient.	
What Organs and Tissue are Utilized	Heart, Lungs, Liver, Pancreas, Kidneys, Intestines, Cornea, Middle Ear, Skin, Bone, Bone Marrow, Heart Valves, Connective Tissue, Vascularized composite allografts, blood vessels, etc.	Uses for medical research and education vary but can span across the entire body. Body donors for science also help to train organ and tissue transplant teams, as well as allow them to practice transplant procedures prior to performing transplant on live patients.	
Who Benefits	Any live recipients of organ or tissue transplant, or any researcher or educator who may acquire organs or tissue that were not able to be placed with a live recipient.	Every body donation to science has the ability to impact an immeasurable number of lives through advancements in surgical technology, as well as educating and training the medical professionals of tomorrow.	
Who Can Donate and Typical Rule Outs	People of all ages should consider themselves potential donors. Programs and needs vary based on many factors. A medical assessment will be done to determine what organs or tissue can be donated. Certain conditions, such as having HIV, actively spreading cancer, or severe infection would exclude organ donation.	Anyone 18 years of age or older should consider themselves a potential donor. Most people meet the criteria for body donation to science, including those with cancer, heart disease, arthritis, diabetes, and many other chronic conditions. Certain conditions such as having HIV, Hepatitis B, Hepatitis C, extremely high or low BMI, donor condition, COVID-19 (symptoms, exposure, or diagnosis), consent issues, location of residence or passing, or an inability to place the donation with current medical research and education projects at the time of donor passing may impact final acceptance into the Science Care Program.	

* 4% not placed with educational and research programs are typically due to contagious disease and donor condition

Medical Programs

Supported by Body Donation to Science

HE WONDERED
WHAT WE COULD
DO WITH THIS
OLD BODY...

This is just a *small portion*
of what donating your
body to science can impact

ARM/HAND

- ▶ Carpal Tunnel Release
- ▶ Radial/Ulna Fracture Repair
- ▶ Elbow Repair
- ▶ Digit Fixation

LUNG

- ▶ COPD
- ▶ Biopsy

PELVIS

- ▶ Incontinence Repair
- ▶ Hip Fracture
- ▶ Hip Replacement

LEGS

- ▶ Vein Stripping
- ▶ Femur/Tibial/Fibular Fracture Repair
- ▶ Knee Replacement
- ▶ Knee Repair
- ▶ Ankle Fusion or Replacement
- ▶ Bunion Repair
- ▶ Peripheral Arterial Disease Stenting

CEPHALUS

- ▶ Neurological Studies
- ▶ Ear, Nose and Throat
- ▶ Facial Reconstruction
- ▶ Tracheostomy
- ▶ Carotid Artery Stenting & Repair

NECK

- ▶ Balloon Sinuplasty

SHOULDER

- ▶ Shoulder Arthroscopy
- ▶ Humeral Fracture Repair
- ▶ Rotator Cuff Repair

SPINE

- ▶ Spinal Fusion
- ▶ Discectomy
- ▶ Laminectomy

TORSO

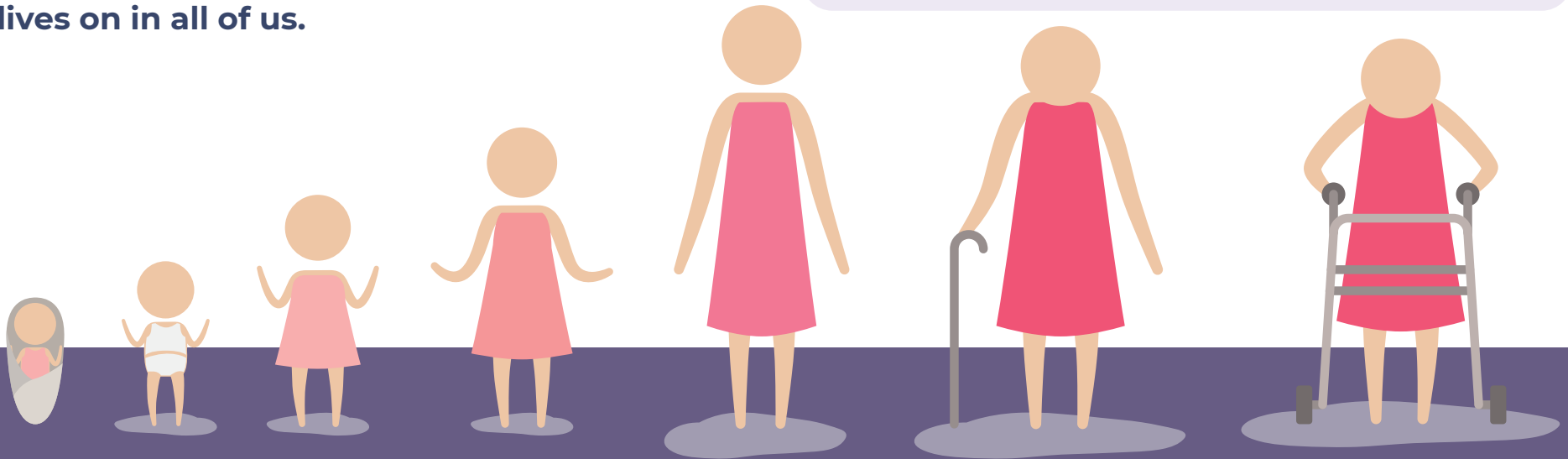
- ▶ Hernia Repair
- ▶ Colostomy
- ▶ Rib Fracture Repair
- ▶ Minimally Invasive Spine Repair
- ▶ Mastectomy
- ▶ Heart Stenting
- ▶ Abdominal Aortic Grafting



The Ultimate Gift

The gift of donation touches every part of our lives, the lives of our loved ones, and the lives of all future generations to come. **It is the gift that lives on in all of us.**

“
From birth to end-of-life,
*the benefits of donating your
body to science are endless.*”



Because of the generosity of those who have donated their bodies to science, we *all* experience:

INCREASED LIFE EXPECTANCY



INCREASED QUALITY OF LIFE

THANK YOU

to every donor who has given their final gift to make our lives better!

Comparison Guide of Options

Each day potential donors ask Science Care the differences between burial, university donation, cremation, organ donation, and body donation to science.

This is a very good question. We can certainly understand the need to know the difference, as it is a very important choice you are faced with. Here at Science Care, we only coordinate body donation to science. The comparison below outlines a few key differences between each of these end-of-life options.

Option	Description	Benefits	Cost	Remains
Burial	The body is typically embalmed for preservation, placed in a casket and then a cemetery plot.	May fulfill a cultural or familial tradition. Provides a final resting place for visiting and can provide a sense of closure or final goodbye.	\$2,000 Avg Casket \$9,000 Avg Funeral + Burial + Plot + Marker	Buried
University Donation	The body is gifted to a willed body program at a medical school. The body is embalmed and cremated after 1-3 years. Cremated remains may not be available for return.	The donor and family may feel comfort in knowing the donation serves an important purpose in helping to train existing and future healthcare providers and serve future generations. Depending on the program, this may eliminate or reduce financial burden on the surviving family. Tissue received will typically remain at the university to serve for its educational, clinical, and research pursuits. Students train using cadavers before they extend care to the public as licensed professionals.	\$0 - \$1000 Many are no cost, but several charge for transportation to the university or have a donation processing fee.	If returned, typically will be provided to the family after use (1-3 years).
Cremation	The body is reduced to fine particles known as cremated remains. These remains are then placed in an urn, interred in a tomb or mausoleum, or scattered.	May fulfill a cultural tradition, and provides a place for visiting or the sharing of cremated remains among loved ones. May reduce financial burden on the surviving family.	\$1,100- \$3,700 The cost can vary greatly depending on the provider and the packages selected. The family can choose from several service options which could impact the final cost.	Returned to family in 1-3 weeks. Expedited service may be requested, typically for an additional fee.
Organ Donation	An organ is gifted from one person to a live transplant recipient. The organ or organs are generally procured at the hospital at the time of passing.	The donor and their loved ones are able to potentially save the life of another, by offering the gift of organ donation. Once organ donation is complete, you have the option to donate your body to science as well, or proceed with more traditional arrangements like burial or cremation. If you want to do both organ donation and body donation to science, it is important you sign up for both individually and let your loved ones know of your wish to do both.	There is no cost to donate organs, but there may be one associated with transportation, as well as the cost of final disposition, depending on the option loved ones choose.	Dependent on the final disposition chosen.
Donating Your Body to Science	The body is gifted to a non-transplant tissue bank. Typically, tissue is placed with medical research and training programs. Tissue not utilized for this purpose is cremated and returned in a temporary urn.	In addition to the cremation benefits, the donor and family may find comfort by helping to advance healthcare for generations to come. Also reduces financial burden on the surviving family. The tissue utilized supports medical research, education, and training around the globe.	Programs vary Science Care is a NO COST option that includes transportation, cremation, the return of cremated remains not matched with a current Science Care program and filing of the death certificate.	Programs vary – Science Care returns cremated remains not matched with a current Science Care program to the family within 3-5 weeks of the donation.

The Power of Peace of Mind

Be a hero to your loved ones.

By registering with the Science Care Program, give your loved ones the gift of clarity and save them from the responsibility of wondering what you want during an emotional time.

Options:	No Action	Registration Intent Science Care	Science Care HOPE Program [®]
Description	Your loved ones are left to decide whether to donate your body to science or not.	Your wishes to donate your body to science have been made clear. You have signed up to be on the Registry, self-consents have been completed, and loved ones have been notified of your wish to donate. Acceptance into the donation process will be determined after time of passing.	The HOPE Program [®] for hospice and terminally ill patients is a pre-screening program offering a 12-month priority consideration for acceptance at the time of passing, with restrictions**. This gives you and your family peace of mind when you need it most.
Benefits	None	<ol style="list-style-type: none"> 1. You can register any time, it only takes 5 minutes over the phone or online. 2. You can complete self-consents prior to donation.* 3. You can express your wishes to loved ones. 4. You can enroll in the HOPE Program[®] at the point of terminal illness. 	<ol style="list-style-type: none"> 1. Once terminally ill or under hospice care you can complete medical screening and social history prior to passing. 2. You can complete self-consents prior to donation.* 3. You can express your wishes to your loved ones.
Steps to be completed now	None	<ol style="list-style-type: none"> 1. Complete registration. 2. Sign and submit consent forms. 3. Notify loved ones of your wish to donate. 	<ol style="list-style-type: none"> 1. Medical screening and social history completed. 2. Self-consent completed or consent determined. 3. Death certificate information obtained. 4. Wishes expressed to loved ones.
Steps to be completed after passing	<ol style="list-style-type: none"> 1. Medical screening and social history completed. 2. Consenter determined (if there is not a legal consenter we cannot proceed). All people in the legal consenting class must sign the consent forms. 3. Death certificate information collected. 4. Transport provider sent to bring you into our care. 	<ol style="list-style-type: none"> 1. Medical screening and social history completed. 2. Consenter determined (if there is not a legal consenter we cannot proceed). All people in the legal consenting class must consent. 3. Death certificate information collected. 4. Transport provider sent to bring you into our care. 	<ol style="list-style-type: none"> 1. Science Care notified of passing and transport provider sent to bring you into our care.

* Self-consent can only be completed as long as there is no memory loss, confusion, Alzheimer's, or dementia. Loved ones can choose another end-of-life option at the time of passing.

** Restrictions apply. Consent issues, location of residence or passing, donor condition, legal issues, contagious disease, COVID-19 (symptoms, exposure, or diagnosis), or any inability to place the donation with current medical research or education projects at the time of donor passing may impact final acceptance into the Science Care Program, including the HOPE Program[®].

What to Expect

As a Science Care donor after passing



NOTIFICATION CALL

▶ A loved one or care provider contacts Science Care to notify of your passing.

▶ A brief medical screening is conducted by phone to determine acceptance.*

Most everyone will qualify. Most common rule-out for donation is contagious disease.

▶ Upon acceptance, pertinent contact and demographic information is collected by a Science Care Representative.*

- ▶ Science Care coordinates transportation to bring you or your loved one into our care.
- ▶ Your loved ones are then assigned a direct point of contact who will assist them through the donation process.

They will obtain signed authorizations from all donation and cremation consenters.

A supplemental medical and social history form and death certificate form is sent and returned electronically to the consenters for completion (may also be completed by phone, in most cases).

- ▶ Science Care files the death certificate in the county of passing. Your loved ones are responsible for purchasing certified copies of the death certificate directly from the county.



DONATION PROCESS BEGINS



COMPLETION OF DONATION

▶ Tissue is recovered for medical research, training and education programs.

▶ Any tissue that is not a match for our program is then cremated and returned to your loved ones within 3-5 weeks following the donation.

▶ Memorial Services

Many families still decide to have a Celebration of Life or memorial service for their loved one. This can be coordinated by family members with a local funeral home.

▶ Legacy Letter

Science Care sends a Legacy Letter to all consenters the month following the donation.

This letter outlines the research programs going on at the time of the donation.

▶ Memory In Nature

Each year a tree sapling is planted to honor the life of every donor who makes the choice to donate.



CELEBRATION OF THE DONATION

* These steps will be complete if you're enrolled in the Science Care HOPE Program®

Science Care HOPE Program[®] =

ONE YEAR
Priority Consideration



If you or someone you know has been diagnosed with a
TERMINAL ILLNESS
you are eligible to be screened for acceptance in to the
*Science Care HOPE Program[®] **

SCIENCE CARE REGISTRATION
does not equal
GUARANTEED ACCEPTANCE
OR PRIORITY CONSIDERATION

If you become terminally ill after registering with Science Care,
you MUST call Science Care to be screened for enrollment in the HOPE PROGRAM[®].

*Consent issues, location of residence or passing, donor condition, legal issues, contagious disease, COVID-19 (symptoms, exposure, or diagnosis), or any inability to place the donation with current medical research or education projects at the time of donor passing may impact final acceptance into the Science Care Program, including the HOPE Program[®].
Please review HOPE Program[®] Terms & Conditions at www.sciencecare.com, or call 800-417-3747.

Avoid Unexpected Outcomes



It is estimated
OVER 40%
of donors who register
to donate
**NEVER BECOME
DONORS**

#1
REASON

*Their loved ones were
not aware of their
wish to donate*

#2
REASON

*Self-consents were not
complete and there is no legal
consenter at the time of passing*

WHEN YOU CHOOSE TO DONATE YOUR BODY TO SCIENCE, you can take steps to ensure your wishes are carried out. For each step you take, the burden is removed from your loved ones and the impact of your gift is strengthened.

OTHER COMMON REASONS YOUR WISH TO DONATE ISN'T FULFILLED

Document Inconsistencies

Legal documents like a Power of Attorney, Will, or Healthcare Directive state a refusal to donate. **Make sure the documents don't contradict your wish to donate.**

Transportation Miscommunication

Our partnering transport provider wasn't the funeral home sent for transport by your loved one. **Make sure Science Care is the first call once passing has been pronounced.** This would again point to making your wishes known to loved ones, so our process can be completed properly.

Family Misunderstanding

A family's request for directed research programs. Science Care cannot guarantee a donor will go to cancer research, Alzheimer's research, diabetes research, etc. **Science Care will match donors with current research programs happening at the time of donation.**

Science Care Memory In Nature Program[®]

Each year, Science Care plants a tree to honor the life of every donor who makes the choice to donate.

Tree saplings are planted in National Forests throughout the country helping to preserve public land and provide food and habitat for wildlife.

THE SCIENCE CARE
PROGRAM IS ABOUT

DEATH HAPPENS ALL ON ITS OWN.

Life

Science Care is proud to help the earth and humanity heal through life-affirming action.

The Memory In Nature[®] program is a small way we honor the gift of donation to science and leave the world a better place for future generations.

Body donation to science is a way to give back at the end of life to make the lives of your loved ones and those left behind better!



Messages From the Science Care Community



“I’d like to thank the entire team at Science Care for your care and professionalism, at the time of our mother’s passing. She had made her wishes clear years ago when she and her husband registered with your program. As a Phoenix firefighter/paramedic I have personally benefited through training at your facility. Your team made the entire process seamless and easier at a difficult time. Thank you.”

A DONOR’S LOVED ONE

“Thank you for notifying me of the planting of a tree in memory of my brother. We are grateful for his foresight in contributing himself to aid in learning about our bodies and in so doing helping others in the process. Again, thank you.”

A DONOR’S LOVED ONE

“Thank you for honoring our son in such a memorable way. He loved the outdoors and the tree represented the cycle of life.”

A DONOR’S LOVED ONE

“

To do more for the world
than the world does for you,

that is success.

”

HENRY FORD

PEACE OF MIND FOR YOU AND YOUR LOVED ONES

COMPLETE THE PROCESS TODAY

REGISTRATION CHECKLIST

- Self-Consents (if possible)
- Establish an alternate plan should donation not be possible at the time of passing
- Your wishes shared with loved ones, or those handling your final wishes
- Assign a Healthcare Power of Attorney responsible for donation/cremation authorization to help honor your wishes
- Join the Science Care Newsletter and invite your loved ones to join - www.sciencecare.com/newsletter-sign-up
- Join the Science Care Facebook community and invite your loved ones to join - <https://www.facebook.com/ScienceCare/>

www.sciencecare.com/join
800-417-3747 ext. 3

HOPE PROGRAM[®] CHECKLIST

- Medical Screening/Social History
- Self-Consents (if possible)
- Death Certificate Information
- Establish an alternate plan should donation not be possible at the time of passing
- Your wishes shared with loved ones, or those handling your final wishes
- Assign a Healthcare Power of Attorney responsible for donation/cremation authorization to help honor your wishes
- Join the Science Care Newsletter and invite your loved ones to join - www.sciencecare.com/newsletter-sign-up
- Join the Science Care Facebook community and invite your loved ones to join - <https://www.facebook.com/ScienceCare/>

www.sciencecare.com/hope
800-417-3747 ext. 2

To share an ebook about the Science Care Program with your loved ones, visit sciencecare.com/share

Your Questions Answered



What is Science Care?

Science Care links donors who choose to donate their body to science with medical researchers and educators, who help to improve quality of life for all of us.

Are you a non-profit organization?

Science Care takes pride in being a for-profit business focused on compliance, ethics, and continuous improvement. Our passion for compliance and ethics resulted in Science Care being the first non-transplant tissue bank accredited by the American Association of Tissue Banks, and it continues to drive the most robust infrastructure in the industry. Respect for our donors, their loved ones, and our clients have allowed us to become the leader in an industry helping to positively change the world.

What does registration do for me?

Registration is not a requirement with Science Care and is not a guarantee. However, it is a great way to share your intent to donate your body to science with your family and loved

ones to ensure they fulfill your wish following your passing. If you choose to register, Science Care provides you with identification cards to distribute to loved ones who may assist with arrangements following your passing.

What is the HOPE Program?

Anyone who is under hospice, palliative care, or has been diagnosed with a terminal illness, qualifies to be pre-screened for the Science Care HOPE Program[®], a 12-month priority consideration for acceptance at the time of passing.

What are your exclusions for donation?

Consent issues, location of residence or passing, donor condition, legal issues, contagious disease, COVID-19 (symptoms, exposure, or diagnosis), or any inability to place the donation with current medical research or education projects at the time of passing may impact final acceptance in to the Science Care Program.

How do I know Science Care is legitimate?

Science Care is the first donate-

your-body-to-science program to be accredited by the American Association of Tissue Banks, which sets the ethical standards in non-transplant tissue banking. To earn this accreditation, Science Care went through an intensive screening process and continues to undergo regular audits. As the industry leader, Science Care continues to help establish standards within the industry. Recently, Science Care participated in movements to mandate licensing and accreditation for non-transplant tissue banks in Arizona, Colorado, and Florida.

Who do you work with? Who are your clients?

Science Care's clients include top pharmaceutical companies, medical device manufacturers, renowned educational institutions, and healthcare organizations large and small, focused on improving patient outcomes and advancing medicine.

Can we still have a viewing? Funeral? Open casket?

When donating your body to science through Science Care's program, cremation is always the final disposition. While a traditional viewing or open casket funeral is not possible, many families have a memorial service either with or without the cremated remains.

SIGN UP


FOR THE
SCIENCE CARE
NEWSLETTER!

Stay informed
on the impact
the Science Care
Program has
on you, your loved
ones, and the rest
of the world!

Registration is not a
requirement to sign
up for the newsletter.
We encourage you
to share the link with
anyone you want to
stay informed.

[www.sciencecare.com/
newsletter-sign-up](http://www.sciencecare.com/newsletter-sign-up)


ENSURE YOUR INTENT TO
DONATE TO SCIENCE IS KNOWN
RETURN YOUR CONSENT FORM
AND SHARE YOUR WISHES

I WISH TO BE A BODY DONOR FOR SCIENCE 

THERE'S A HERO IN US ALL

7297

FOLD

Science Care 

NAME _____

hours a day

800.417.3747 to complete a screening – available 24

In the event of my death (or entry into hospice care)
please contact Science Care immediately at

PLEASE CALL NOW TO ACTIVATE

FOLD

Cut out card – fold halves together – glue

INSTRUCTIONS

Place your temporary registration card in your wallet, or in a place where your loved ones can easily locate it upon your passing.

Thank you

SHARE

YOUR WISH TO DONATE
YOUR BODY TO SCIENCE
WITH YOUR LOVED ONES
TODAY

WE NEED YOUR HELP!

Everyone should know
their options!

We encourage you to
share the option of body
donation to science with
your loved ones, friends
and community.

For a free ebook to
share, please visit
[www.sciencecare.com/
share](http://www.sciencecare.com/share)

Join us on Facebook
[https://www.facebook.
com/sciencecare/](https://www.facebook.com/sciencecare/)



Science Care®
Registration Code 7297

BE A HERO

800.417.3747

THANK YOU FOR REGISTERING YOUR INTENT
TO DONATE YOUR BODY TO SCIENCE

No Cost Cremation

www.sciencecare.com