

Jeppesen SIMCharts

This aeronautical chart is intended for flight simulation use ONLY and will vary from actual navigational charts.

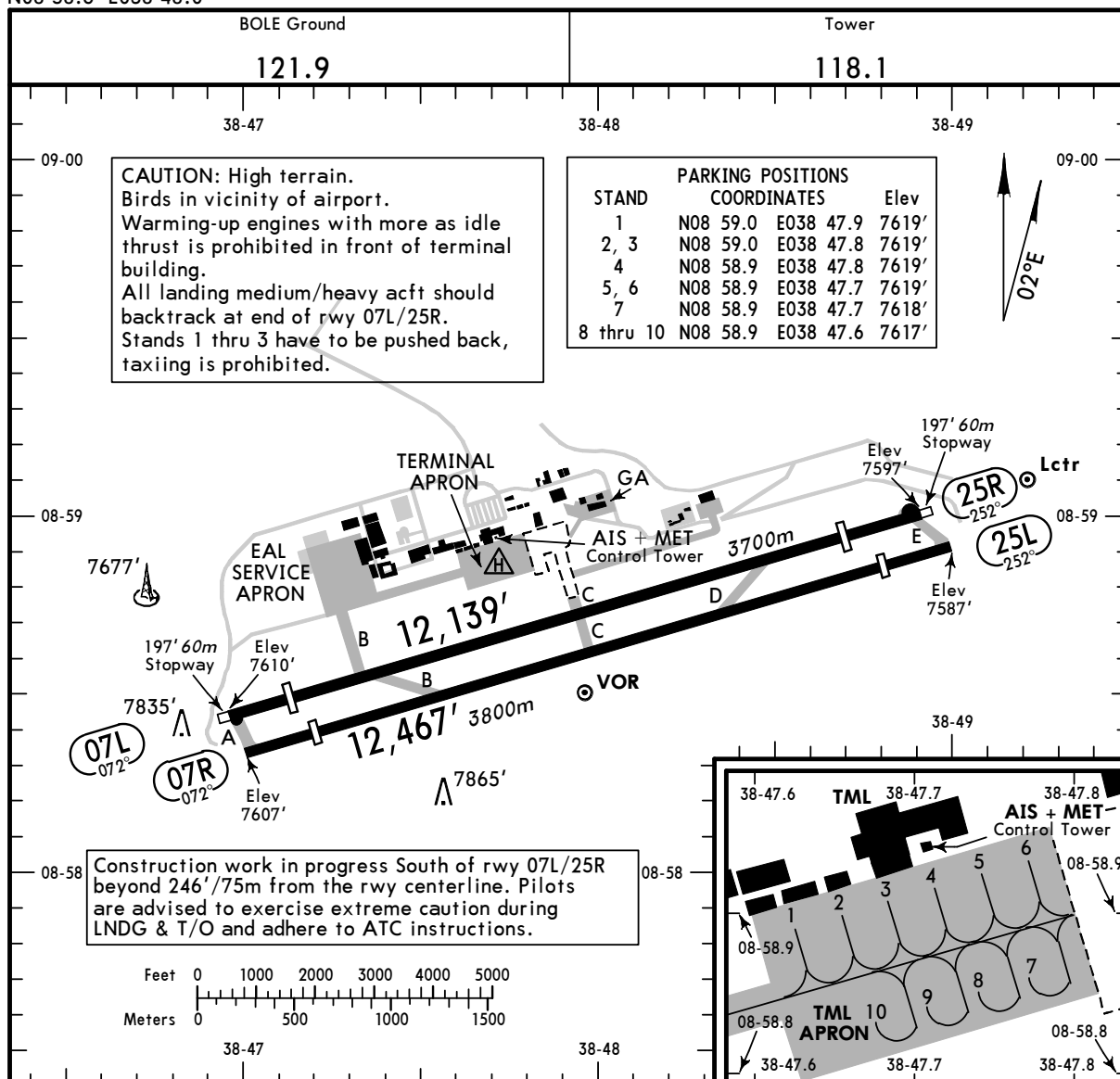
HAAB/ADD

Apt Elev **7625'**
N08 58.6 E038 48.0

JEPPESEN ADDIS ABEBA, ETHIOPIA

14 NOV 03 (10-9) Eff 27 Nov

BOLE INTL



Jeppesen SIMCharts

This aeronautical chart is intended for flight simulation use ONLY and will vary from actual navigational charts.

HAAB/ADD



JAA MINIMUMS

12 DEC 03

10-9X

ADDIS ABEBA, ETHIOPIA
BOLE INTL

STRAIGHT-IN RWY		A	B	C	D
07L	RNAV (GPS)	8250' (632')	8250' (632')	8250' (632')	8250' (632')
		3000m	3000m	3000m	3000m
07R	RNAV (GPS)	8250' (632')	8250' (632')	8250' (632')	8250' (632')
		3000m	3000m	3000m	1000m
25L	ILS	7794' (200')	7794' (200')	7794' (200')	7794' (200')
		800m	800m	800m	800m
	ALS out	1000m	1000m	1000m	1000m
	LOC	7970' (376')	7970' (376')	7970' (376')	7970' (376')
		1300m	1400m	1600m	1800m
	ALS out	1500m	1500m	1800m	2000m
	VOR DME	8010' (416')	8010' (416')	8010' (416')	8010' (416')
		1300m	1400m	1600m	1800m
	ALS out	1500m	1500m	1800m	2000m
	RNAV (VOR DME)	NOT APPLICABLE	NOT APPLICABLE	8020' (426')	8020' (426')
				1600m	1800m
	ALS out			1800m	2000m
25R	ILS	7804' (200')	7804' (200')	7804' (200')	7804' (200')
		1000m	1000m	1000m	1000m
	LOC ①	7860' (256')	7860' (256')	7860' (256')	7860' (256')
		1500m	1500m	1600m	1800m
	VOR DME	8010' (406')	8010' (406')	8010' (406')	8010' (406')
		1500m	1500m	1800m	2000m
	VOR DME via ARC	NOT APPLICABLE	NOT APPLICABLE	8000' (396')	8000' (396')
				1800m	2000m
	NDB VOR DME	8000' (396')	8000' (396')	NOT APPLICABLE	NOT APPLICABLE
		1500m	1500m		
	2 NDB	8020' (416')	8020' (416')	8020' (416')	8020' (416')
		1500m	1500m	1800m	2000m

① LMM out: NOT AUTH.

CIRCLE-TO-LAND ②③④	100 KT	135 KT	180 KT	205 KT
	8110' (485')	8150' (525')	8650' (1025')	8650' (1025')
	V1500m	V1600m	V2400m	V3600m

② Not authorized North of runway between R-315 and R-068.

③ Not applicable for RNAV (GPS) RWY 07L/R.

④ After RNAV (VOR DME) apch RWY 25L: CAT A & B NOT APPLICABLE.

Take-off RWY 07L/R, 25L/R

LVP must be in Force			
	RCLM (DAY only) or RL	RCLM (DAY only) or RL	NIL (DAY only)
A			
B	250m	400m	500m
C			
D	300m		

Jeppesen SIMCharts

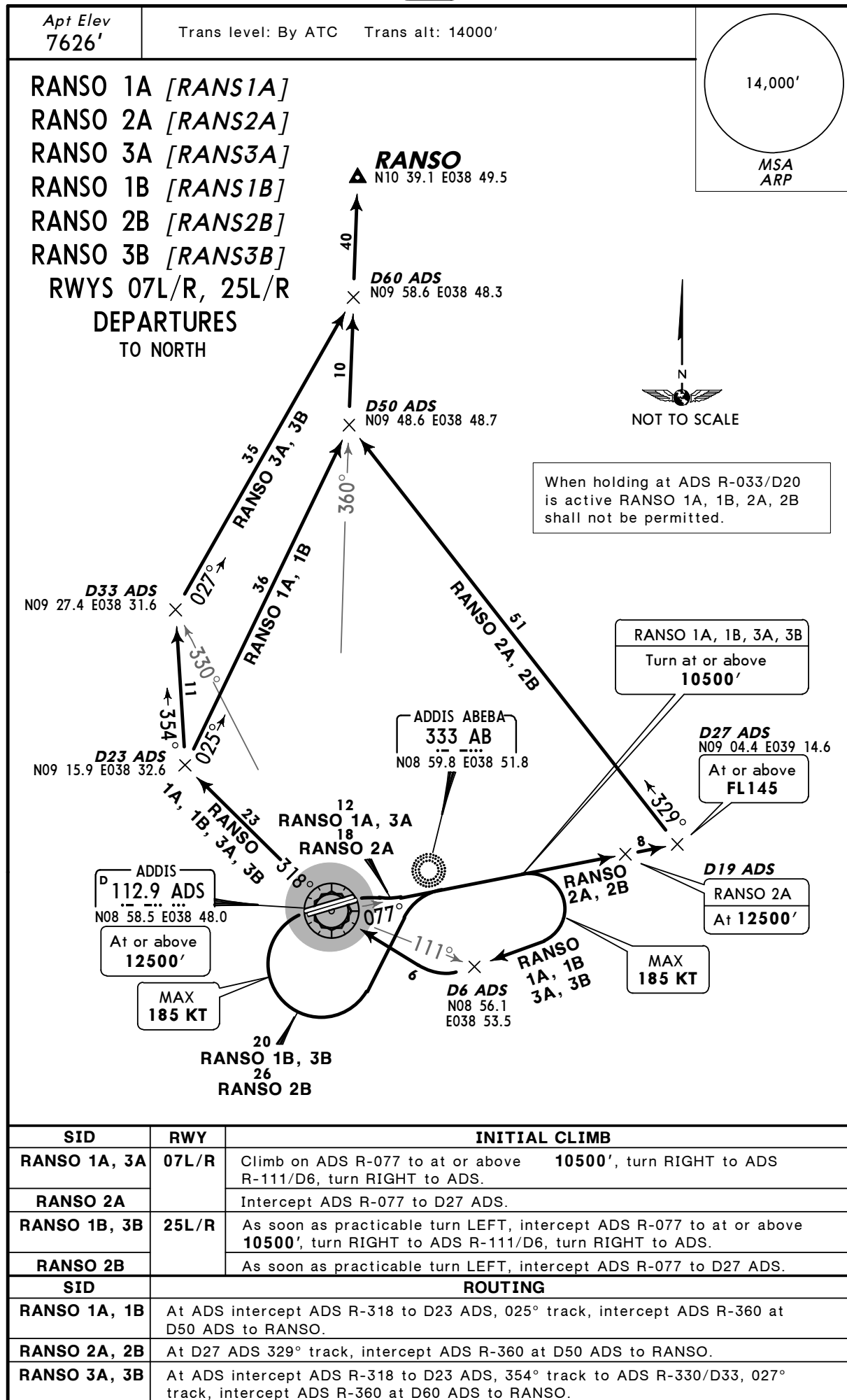
This aeronautical chart is intended for flight simulation use ONLY and will vary from actual navigational charts.

HAAB/ADD
BOLE INTL

JEPPESSEN ADDIS ABEBA, ETHIOPIA

25 JUL 03 **10-3**

SID



Jeppesen SIMCharts

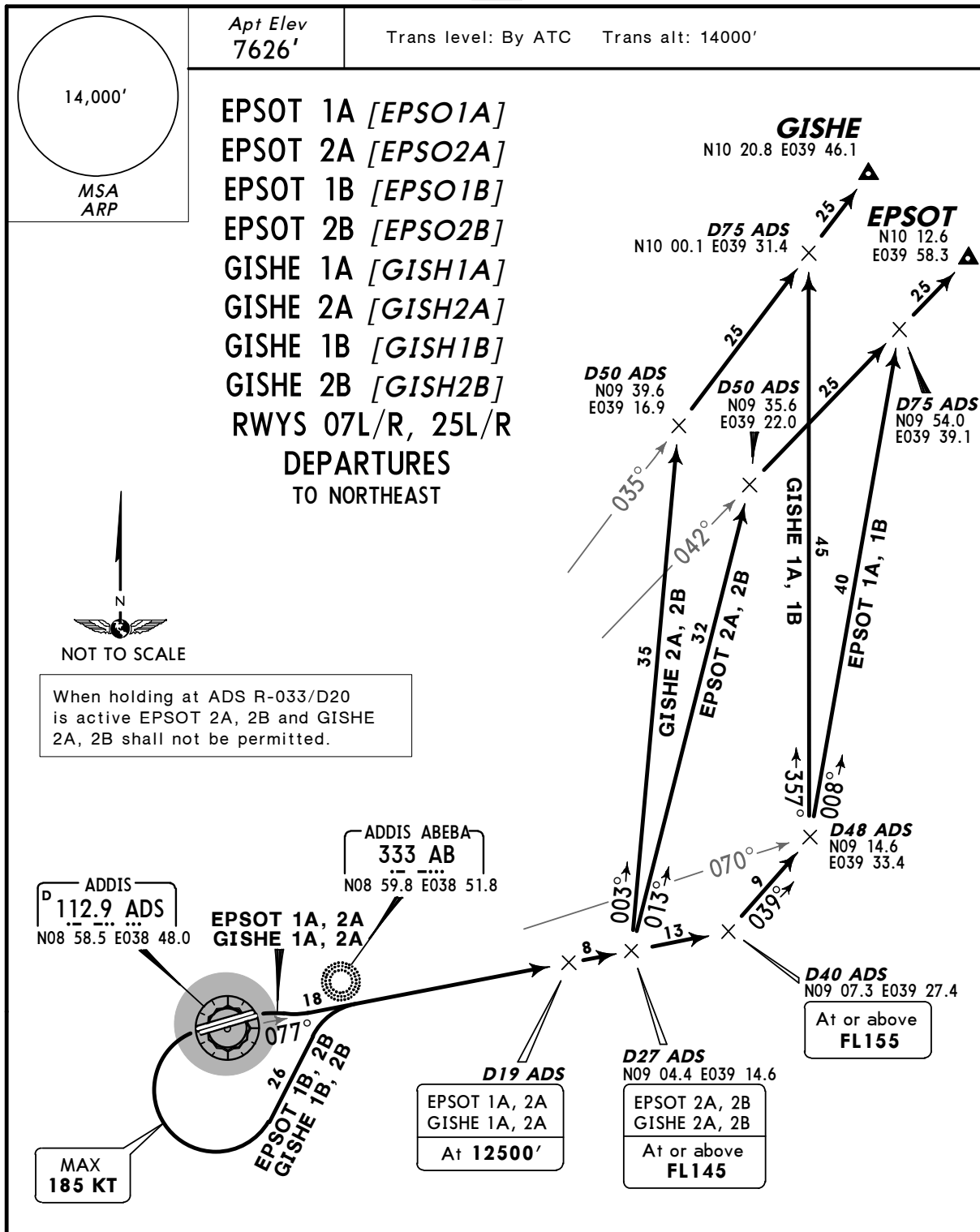
This aeronautical chart is intended for flight simulation use ONLY and will vary from actual navigational charts.

HAAB/ADD
BOLE INTL

JEPPesen ADDIS ABEBA, ETHIOPIA

25 JUL 03 (10-3A)

SID



SID	RWY	INITIAL CLIMB
EPSOT 1A GISHE 1A	07L/R	Intercept ADS R-077 to D40 ADS.
EPSOT 2A GISHE 2A		Intercept ADS R-077 to D27 ADS.
EPSOT 1B GISHE 1B	25L/R	As soon as practicable turn LEFT, intercept ADS R-077 to D40 ADS.
EPSOT 2B GISHE 2B		As soon as practicable turn LEFT, intercept ADS R-077 to D27 ADS.
SID		ROUTING
EPSOT 1A, 1B	At D40 ADS 039° track to ADS R-070/D48, 008° track, intercept ADS R-042 at D75 ADS to EPSOT.	
EPSOT 2A, 2B	At D27 ADS 013° track, intercept ADS R-042 at D50 ADS to EPSOT.	
GISHE 1A, 1B	At D40 ADS 039° track to ADS R-070/D48, 357° track, intercept ADS R-035 at D75 ADS to GISHE.	
GISHE 2A, 2B	At D27 ADS 003° track, intercept ADS R-035 at D50 ADS to GISHE.	

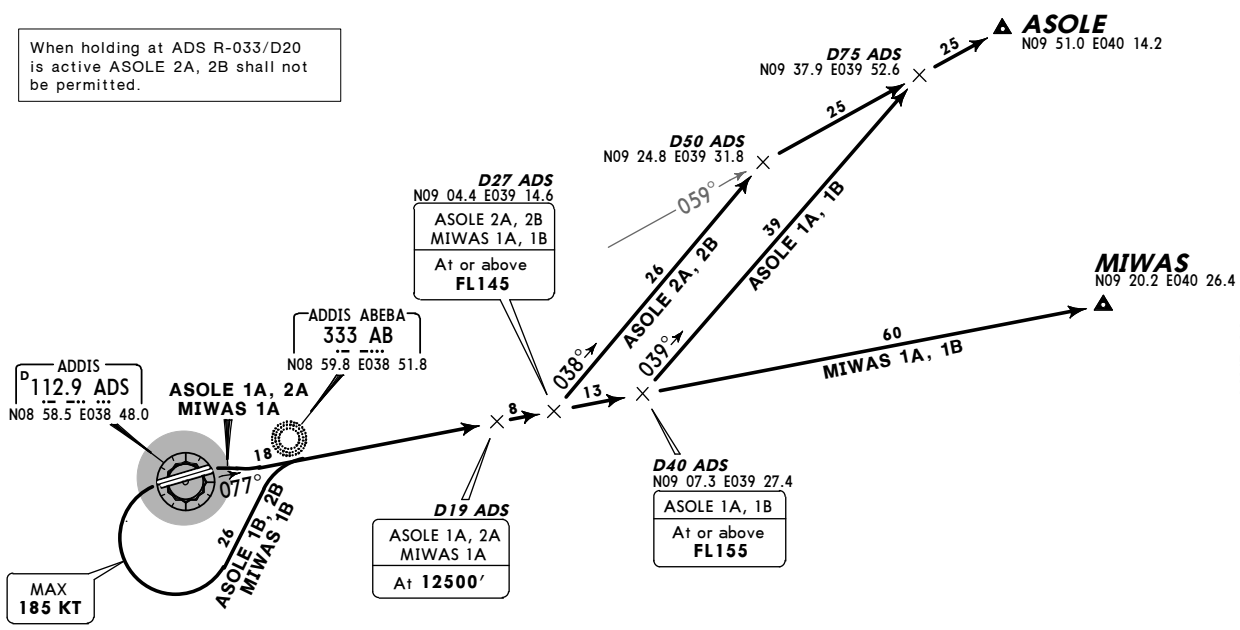
Jeppesen SIMCharts

This aeronautical chart is intended for flight simulation use ONLY and will vary from actual navigational charts.

HAAB/ADD
BOLE INTL
Apt Elev
7626'
Trans level: By ATC
Trans alt: 14000'
25 JUL 03
JEPPESSEN ADDIS ABABA, ETHIOPIA
10-3B
SID

ASOLE 1A [ASOL1A], ASOLE 2A [ASOL2A]
ASOLE 1B [ASOL1B], ASOLE 2B [ASOL2B]
MIWAS 1A [MIWA1A], MIWAS 1B [MIWA1B]
RWYS 07L/R, 25 L/R DEPARTURES
TO EAST

When holding at ADS R-033/D20 is active ASOLE 2A, 2B shall not be permitted.



SID	RWY	TAKE-OFF/ROUTING
ASOLE 1A	07L/R	Intercept ADS R-077 to D40 ADS, 039° track, intercept ADS R-059 at D75 ADS to ASOLE.
ASOLE 2A		Intercept ADS R-077 to D27 ADS, 038° track, intercept ADS R-059 at D50 ADS to ASOLE.
ASOLE 1B	25L/R	As soon as practicable turn LEFT, intercept ADS R-077 to D40 ADS, 039° track, intercept ADS R-059 at D75 ADS to ASOLE.
ASOLE 2B		As soon as practicable turn LEFT, intercept ADS R-077 to D27 ADS, 038° track, intercept ADS R-059 at D50 ADS to ASOLE.
MIWAS 1A	07L/R	Intercept ADS R-077 to MIWAS.
MIWAS 1B	25L/R	As soon as practicable turn LEFT, intercept ADS R-077 to MIWAS.

CHANGES: Transition altitude: MSA; runway designation: new format. © JEPPESSEN SANDERSON, INC., 2003. ALL RIGHTS RESERVED.

Jeppesen SIMCharts

This aeronautical chart is intended for flight simulation use ONLY and will vary from actual navigational charts.

HAAB/ADD
BOLE INTL

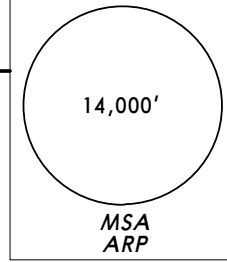
JEPPESEN ADDIS ABEBA, ETHIOPIA

25 JUL 03 (10-3C)

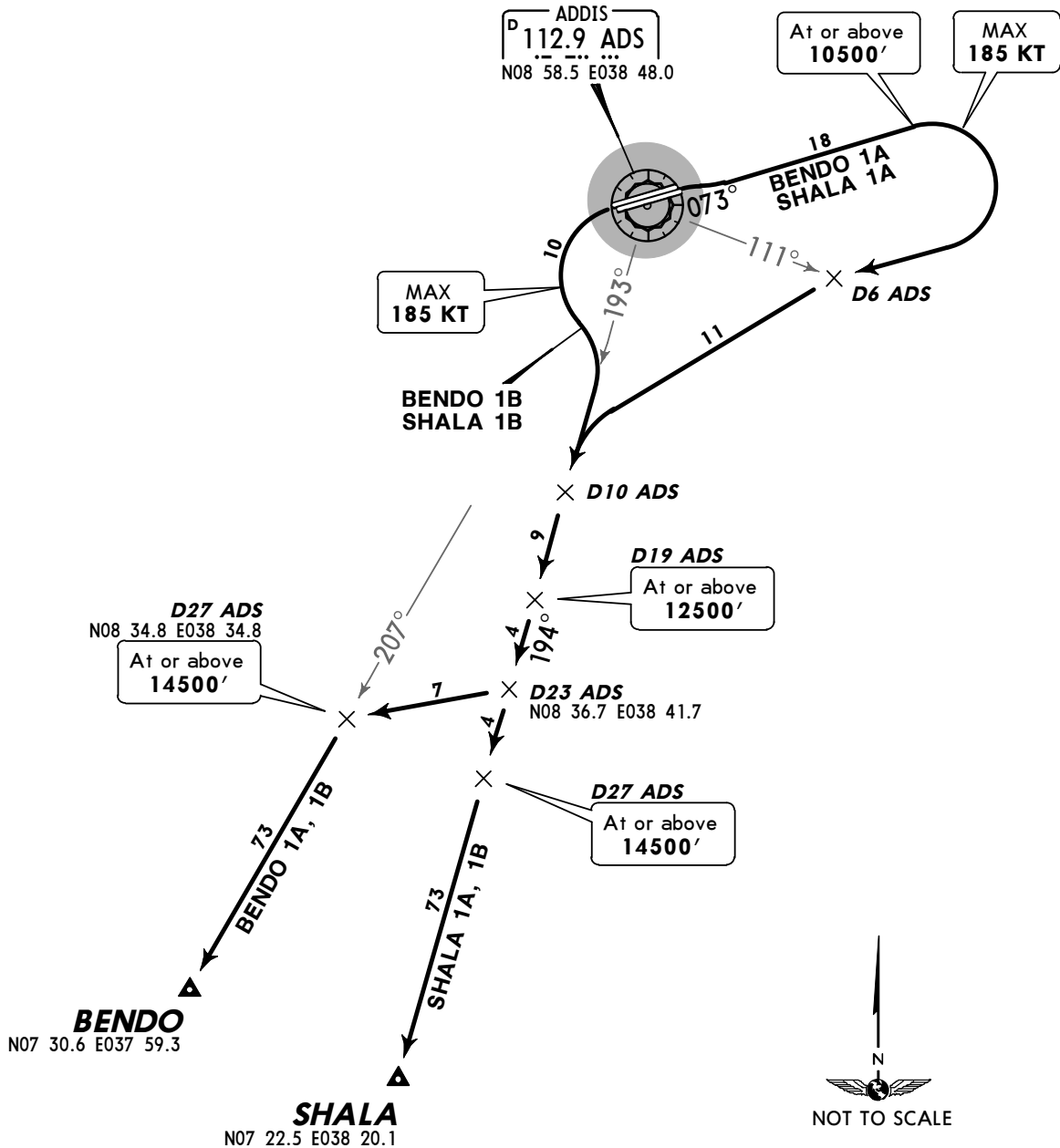
SID

Apt Elev
7626'

Trans level: By ATC Trans alt: 14000'



**BENDO 1A [BEND1A], BENDO 1B [BEND1B]
SHALA 1A [SHAL1A], SHALA 1B [SHAL1B]
RWYS 07L/R, 25L/R DEPARTURES
TO SOUTH**



SID	RWY	INITIAL CLIMB
BENDO 1A SHALA 1A	07L/R	Climb on ADS R-073 to at or above 10500' , turn RIGHT to ADS R-111/D6 ,intercept ADS R-193 at D10 ADS to D19 ADS.
BENDO 1B SHALA 1B	25L/R	As soon as practicable turn LEFT, intercept ADS R-193 at D10 ADS to D19 ADS.
SID	ROUTING	
BENDO 1A, 1B	At D19 ADS intercept ADS R-194 to D23 ADS, intercept ADS R-207 to BENDO.	
SHALA 1A, 1B	At D19 ADS intercept ADS R-194 to SHALA.	

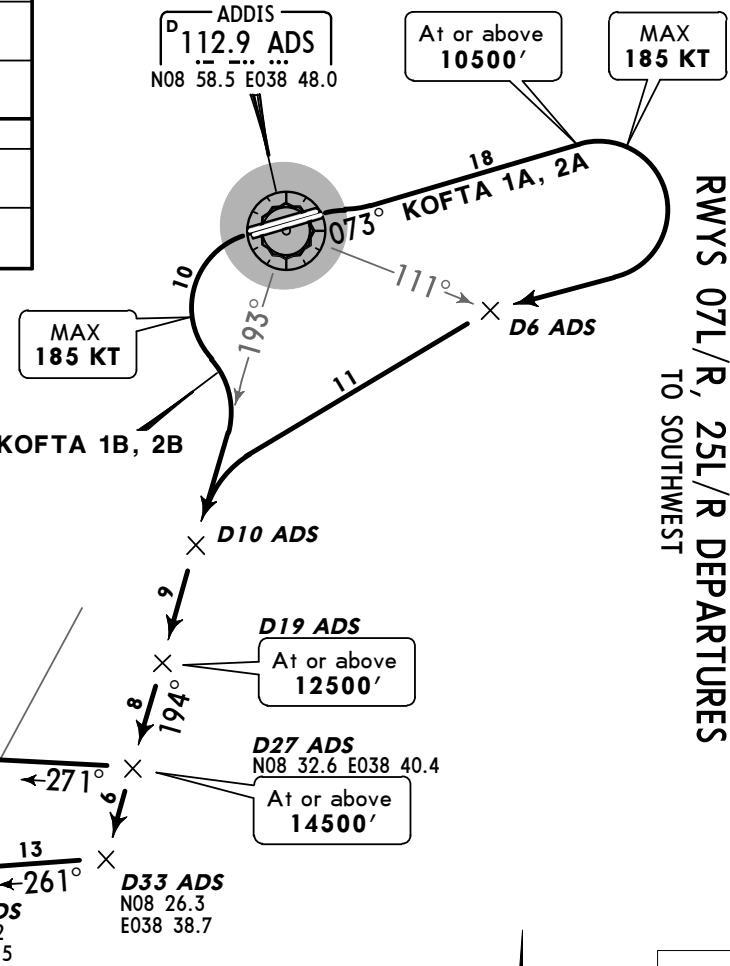
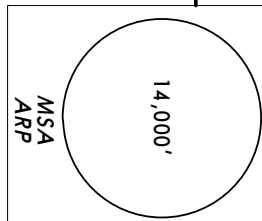
HAAB/ADD
BOLE INTL

JEPPESSEN ADDIS ABEBA, ETHIOPIA
25 JUL 03 **(10-3D)** **SID**

Apt Elev
7626'

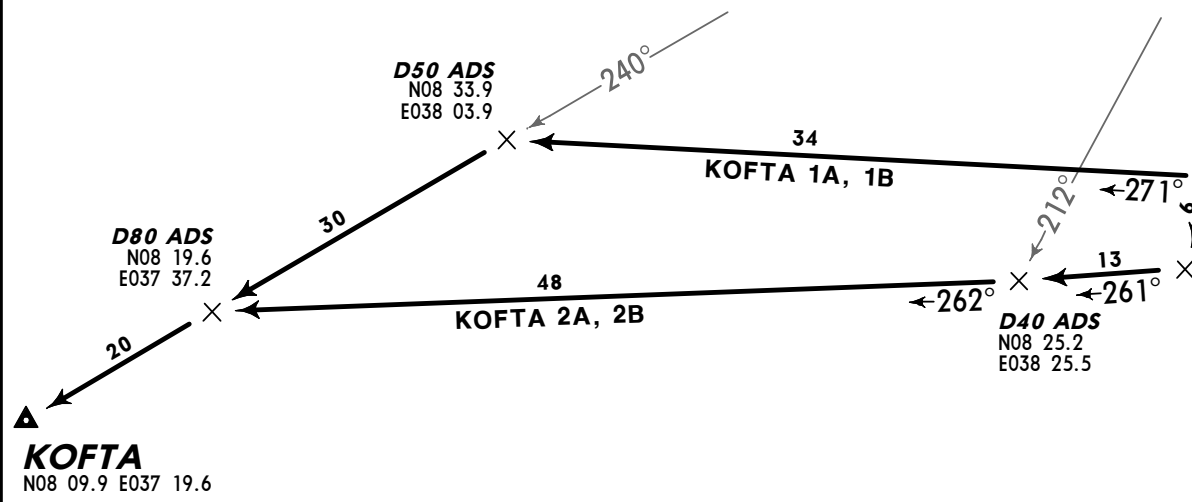
Trans level: By ATC Trans alt: 14000'

**KOFTA 1A [KOF11A], KOFTA 2A [KOF22A]
KOFTA 1B [KOF11B], KOFTA 2B [KOF22B]
RWYS 07L/R, 25L/R DEPARTURES
TO SOUTHWEST**



SID	RWY	INITIAL CLIMB
KOFTA 1A KOFTA 2A	07L/R	Climb on ADS R-073 to at or above 10500' , turn RIGHT to ADS R-111/D6, intercept ADS R-193 at D10 ADS to D19 ADS.
KOFTA 1B KOFTA 2B	25L/R	As soon as practicable turn LEFT, intercept ADS R-193 at D10 ADS to D19 ADS.
SID	ROUTING	
KOFTA 1A, 1B	At D19 ADS intercept ADS R-194 to D27 ADS, 271° track, intercept ADS R-240 at D50 ADS to KOFTA.	
KOFTA 2A, 2B	At D19 ADS intercept ADS R-194 to D33 ADS, 261° track to ADS R-212/D40, 262° track, intercept ADS R-240 at D80 ADS to KOFTA.	

When holding at ADS R-249/D23.5 is active departures KOFTA 1A, 1B will not be permitted.

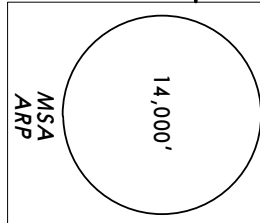


HAAB/ADD
BOLE INTL

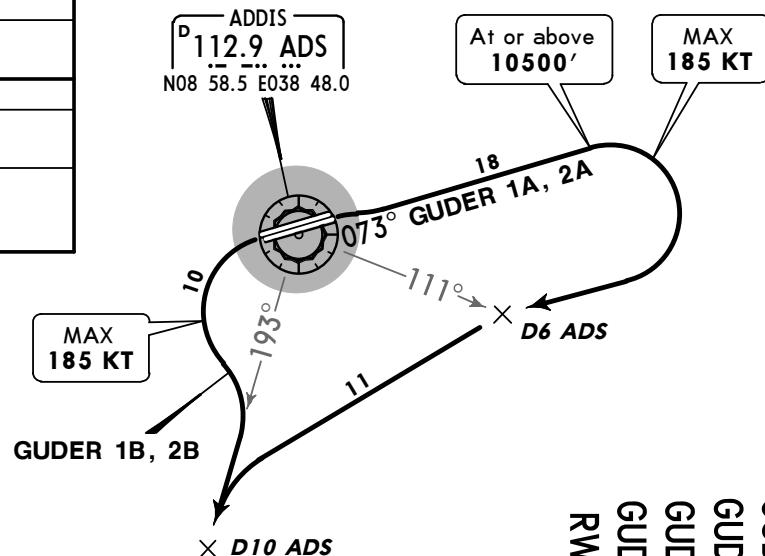
JEPPesen ADDIS ABEBA, ETHIOPIA
25 JUL 03 10-3E
SID

Apt Elev
7626'

Trans level: By ATC Trans alt: 14000'

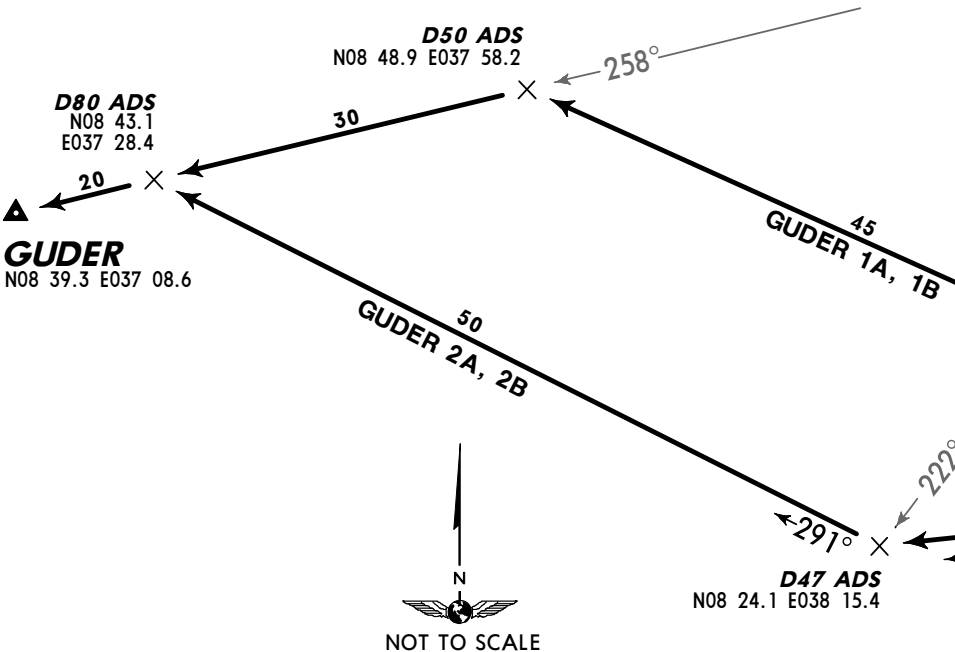


- GUDER 1A [GUDE1A]
 - GUDER 2A [GUDE2A]
 - GUDER 1B [GUDE1B]
 - GUDER 2B [GUDE2B]
 - RWYS 07L/R, 25L/R
- DEPARTURES**
TO WESTSOUTHWEST



When holding at ADS R-249/D23.5 is active departures GUDER 1A, 1B will not be permitted.

SID	RWY	INITIAL CLIMB
GUDER 1A GUDER 2A	07L/R	Climb on ADS R-073 to at or above 10500', turn RIGHT to ADS R-111/D6, intercept ADS R-193 at D10 ADS to D19 ADS.
GUDER 1B GUDER 2B	25L/R	As soon as practicable turn LEFT, intercept ADS R-193 at D10 ADS to D19 ADS.
SID	ROUTING	
GUDER 1A, 1B	At D19 ADS intercept ADS R-194 to D27 ADS, 289° track, intercept ADS R-258 at D50 ADS to GUDER.	
GUDER 2A, 2B	At D19 ADS intercept ADS R-194 to D33 ADS, 261° track to ADS R-212/D40, 262° track to ADS R-222/D47, 291° track, intercept ADS R-258 at D80 ADS to GUDER.	



HAAB/ADD
BOLE INTL

JEPPESSEN ADDIS ABEBA, ETHIOPIA

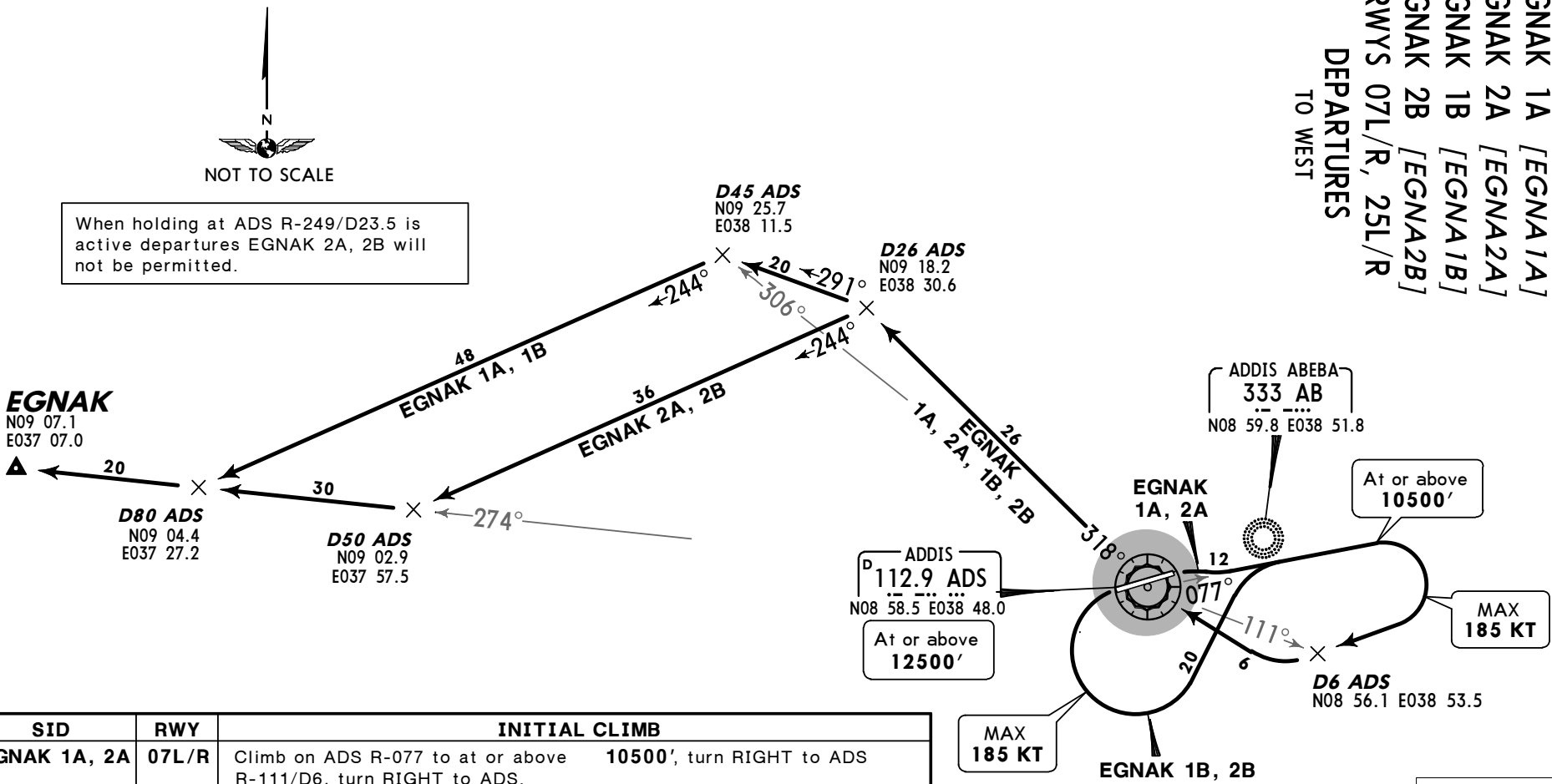
25 JUL 03 10-3F

SID

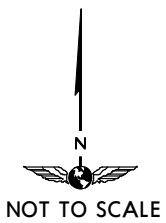
Apt Elev
7626'

Trans level: By ATC Trans alt: 14000'

EGNAK 1A [EGNA1A]
EGNAK 2A [EGNA2A]
EGNAK 1B [EGNA1B]
EGNAK 2B [EGNA2B]
RWYS 07L/R, 25L/R
DEPARTURES
TO WEST



When holding at ADS R-249/D23.5 is active departures EGNAC 2A, 2B will not be permitted.



SID	RWY	INITIAL CLIMB
EGNAK 1A, 2A	07L/R	Climb on ADS R-077 to at or above 10500', turn RIGHT to ADS R-111/D6, turn RIGHT to ADS.
EGNAK 1B, 2B	25L/R	As soon as practicable turn LEFT, intercept ADS R-077 to at or above 10500', turn RIGHT to ADS R-111/D6, turn RIGHT to ADS.
SID	ROUTING	
EGNAK 1A, 1B	At ADS intercept ADS R-318 to D26 ADS, 291° track to ADS R-306/D45, 244° track, intercept ADS R-274 at D80 ADS to EGNAC.	
EGNAK 2A, 2B	At ADS intercept ADS R-318 to D26 ADS, 244° track, intercept ADS R-274 at D50 ADS to EGNAC.	

Jeppesen SIMCharts

This aeronautical chart is intended for flight simulation use ONLY and will vary from actual navigational charts.

HAAB/ADD
BOLE INTL

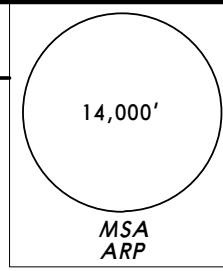
JEPPESSEN ADDIS ABEBA, ETHIOPIA

25 JUL 03 (10-3G)

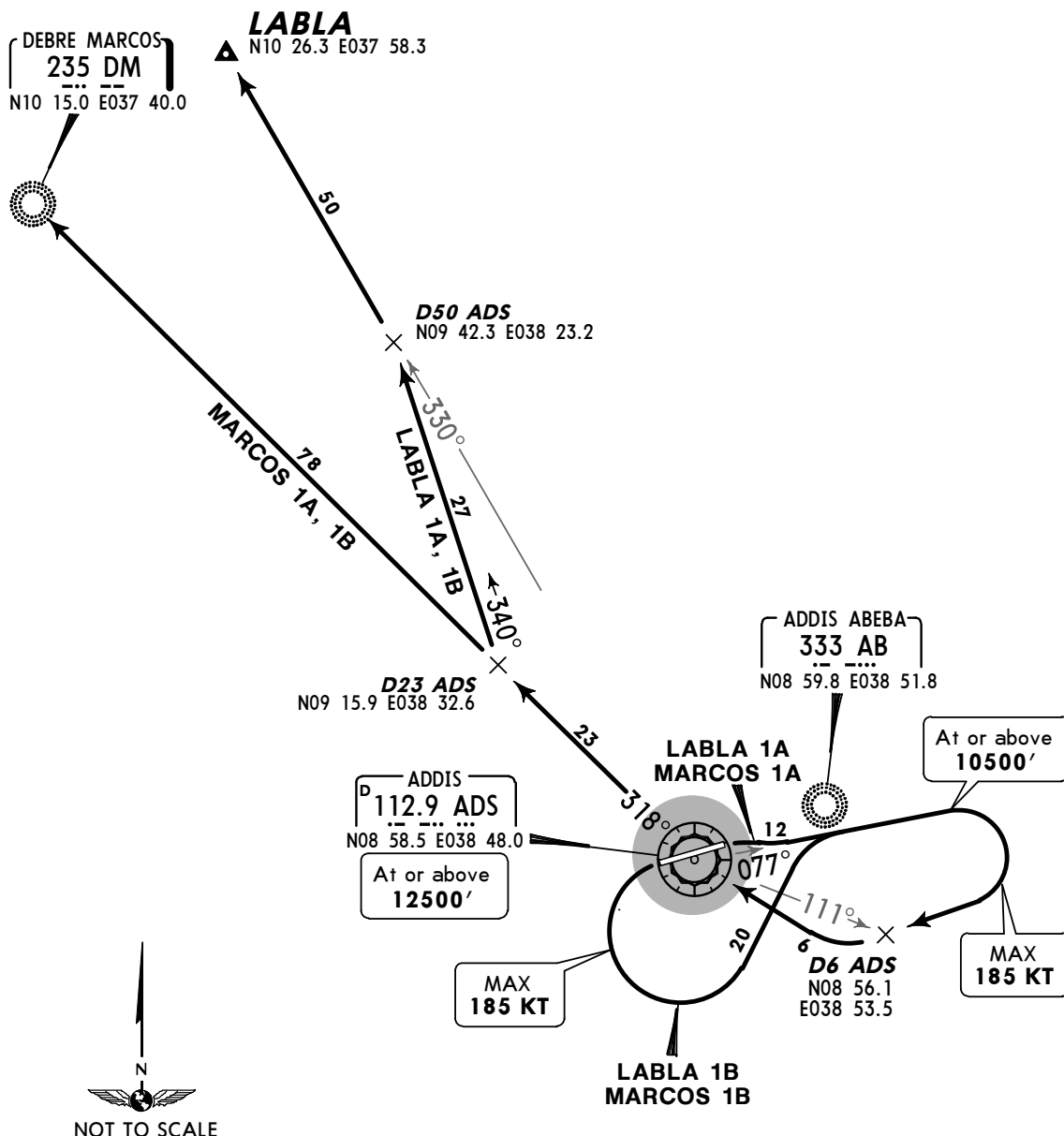
SID

Apt Elev
7626'

Trans level: By ATC Trans alt: 14000'



LABLA 1A [LABL1A], LABLA 1B [LABL1B]
MARCOS 1A [MARC1A], MARCOS 1B [MARC1B]
RWYS 07L/R, 25L/R DEPARTURES
TO NORTHWEST



SID	RWY	INITIAL CLIMB
LABLA 1A MARCOS 1A	07L/R	Climb on ADS R-077 to at or above 10500' , turn RIGHT to ADS R-111/D6, turn RIGHT to ADS.
LABLA 1B MARCOS 1B	25L/R	As soon as practicable turn LEFT, intercept ADS R-077 to at or above 10500' , turn RIGHT to ADS R-111/D6, turn RIGHT to ADS.
SID	ROUTING	
LABLA 1A, 1B	At ADS intercept ADS R-318 to D23 ADS, 340° track, intercept ADS R-330 at D50 ADS to LABLA.	
MARCOS 1A, 1B	At ADS intercept ADS R-318 to DM.	

Jeppesen SIMCharts

This aeronautical chart is intended for flight simulation use ONLY and will vary from actual navigational charts.

HAAB/ADD
BOLE INTL

JEPPESSEN

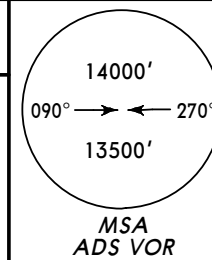
ADDIS ABEBA, ETHIOPIA

6 FEB 04 **10-2**

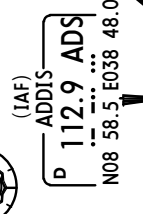
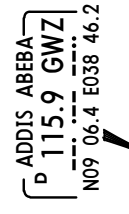
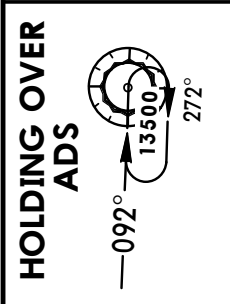
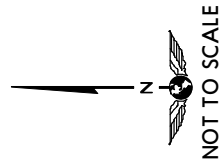
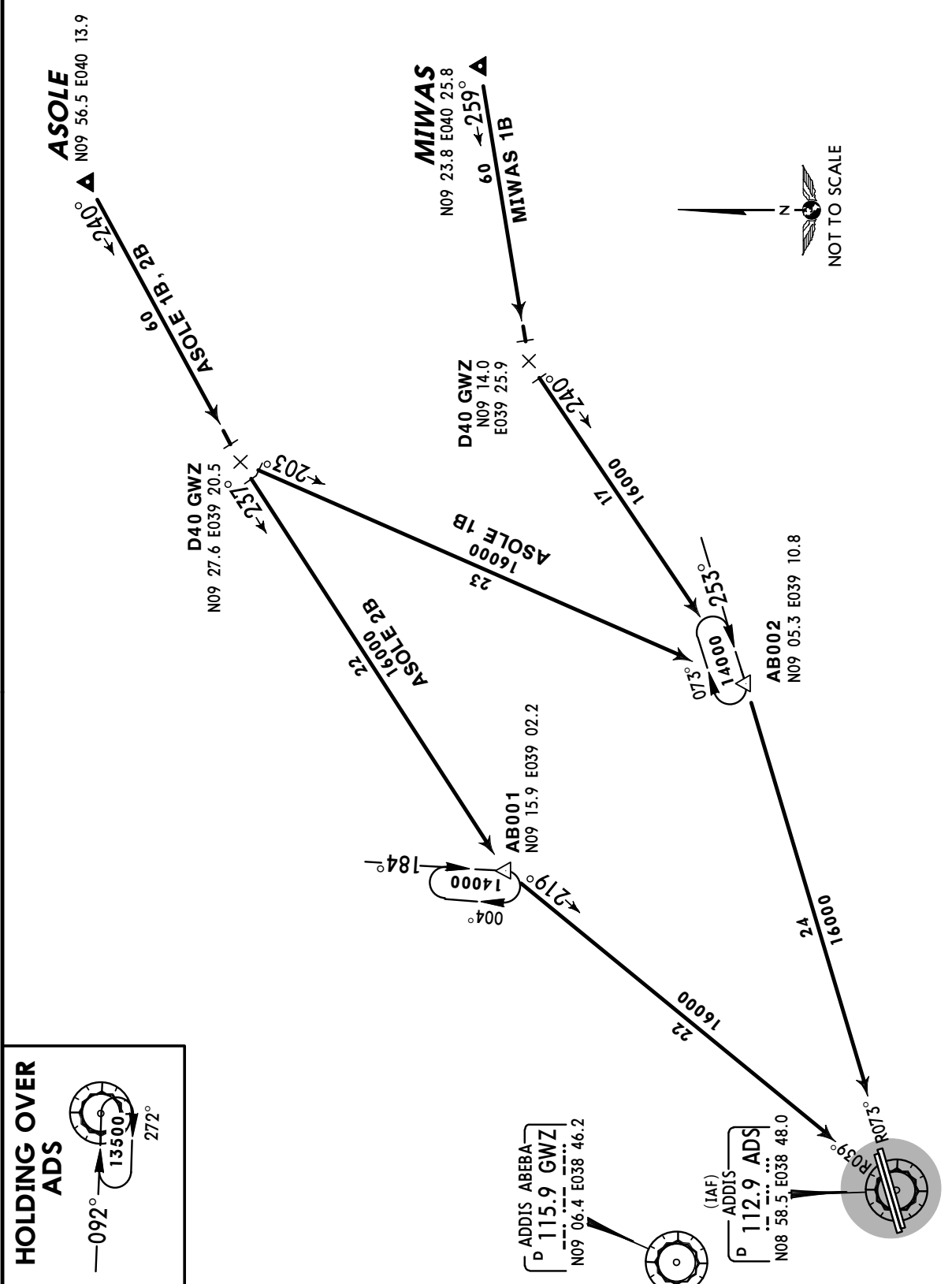
STAR

Apt Elev
7626'

Alt Set: MB
Trans level: By ATC Trans alt: 14000'



ASOLE 1B [ASOL1B], ASOLE 2B [ASOL2B]
MIWAS 1B [MIWA1B]
RWYS 07R, 25L ARRIVALS
FROM EAST



Jeppesen SIMCharts

This aeronautical chart is intended for flight simulation use ONLY and will vary from actual navigational charts.

HAAB/ADD
BOLE INTL

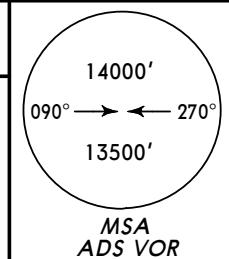
JEPPESSEN

ADDIS ABEBA, ETHIOPIA

6 FEB 04 **(10-2A)**

STAR

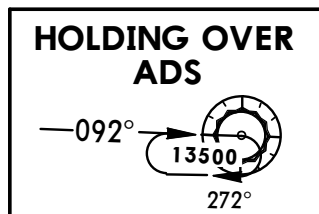
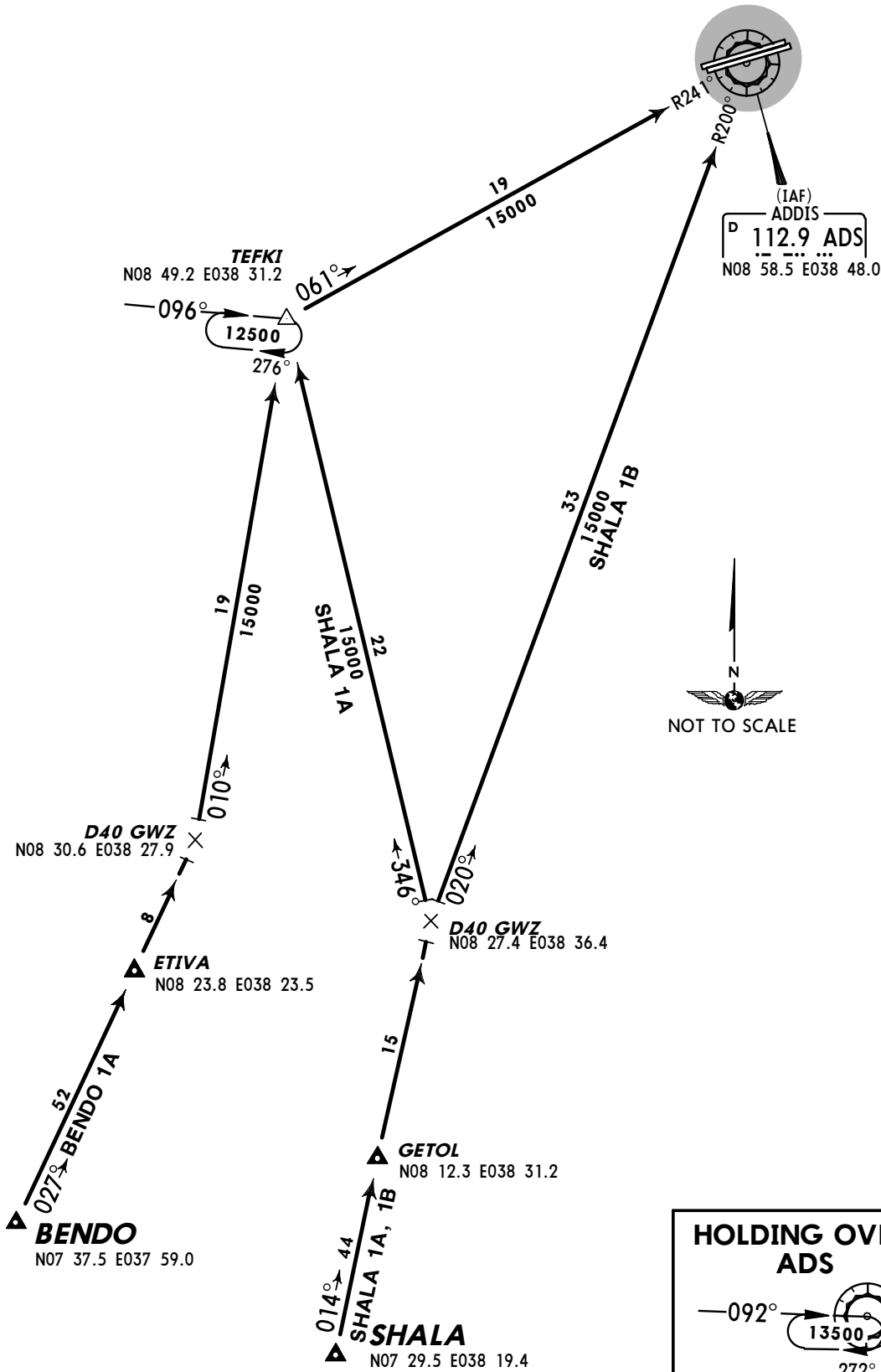
Apt Elev **7626'** Alt Set: MB
Trans level: By ATC Trans alt: 14000'



BENDO 1A [BEND1A]
SHALA 1A [SHAL1A], SHALA 1B [SHAL1B]
RWYS 07R, 25L ARRIVALS
FROM SOUTH

ADDIS ABEBA
D 115.9 GWZ
N09 06.4 E038 46.2

(IAF)
ADDIS
D 112.9 ADS
N08 58.5 E038 48.0



Jeppesen SIMCharts

This aeronautical chart is intended for flight simulation use ONLY and will vary from actual navigational charts.

HAAB/ADD
BOLE INTL

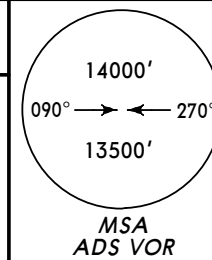
JEPPESEN ADDIS ABEBA, ETHIOPIA

6 FEB 04 **10-2B**

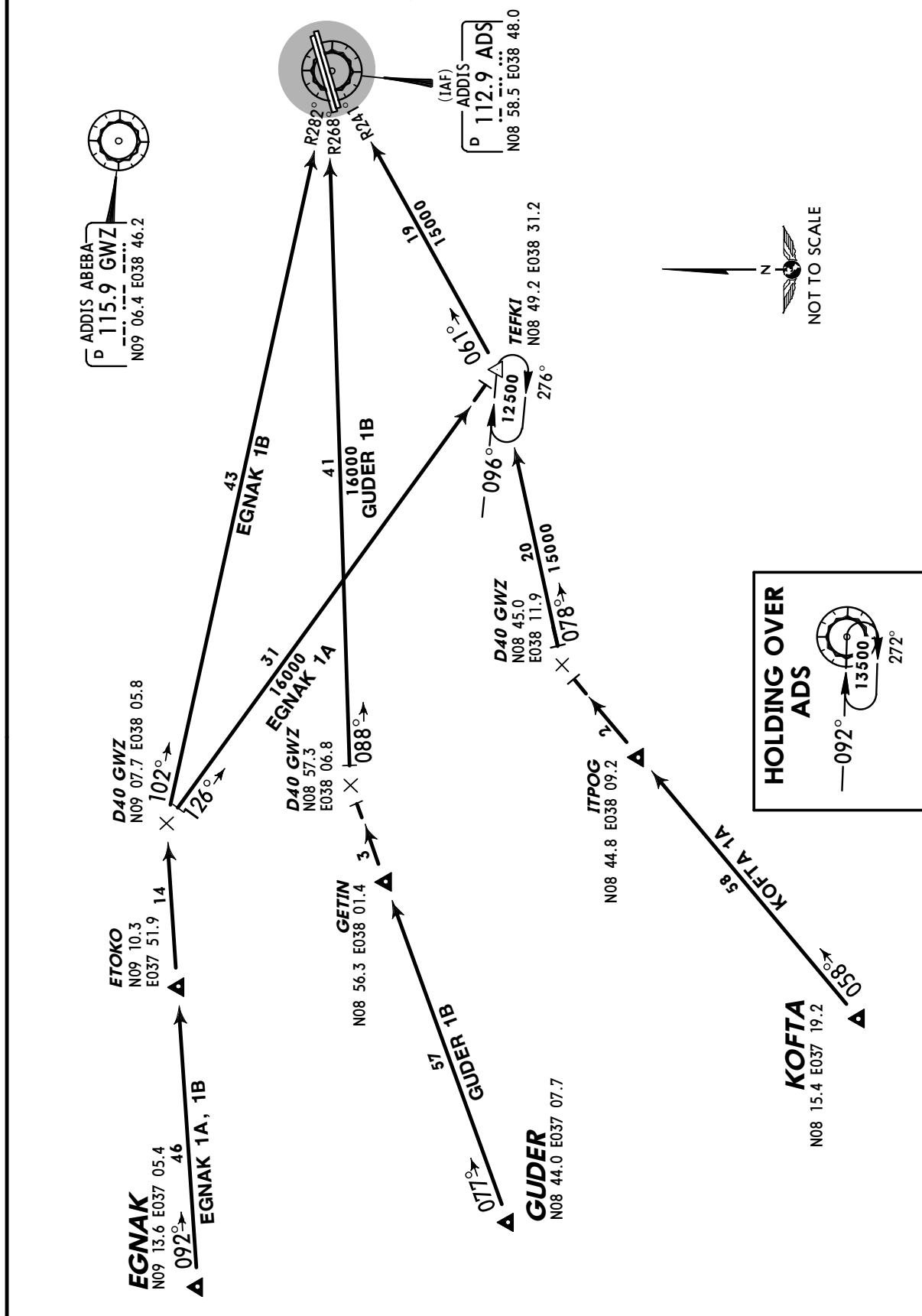
STAR

Apt Elev
7626'

Alt Set: MB
Trans level: By ATC Trans alt: 14000'



EGNAK 1A [EGNA1A], EGNAK 1B [EGNA1B]
GUDER 1B [GUDE1B], KOFTA 1A [KOFT1A]
RWYS 07R, 25L ARRIVALS
FROM WEST



Jeppesen SIMCharts

This aeronautical chart is intended for flight simulation use ONLY and will vary from actual navigational charts.

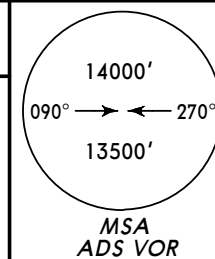
HAAB/ADD
BOLE INTL

JEPPESEN ADDIS ABEBA, ETHIOPIA

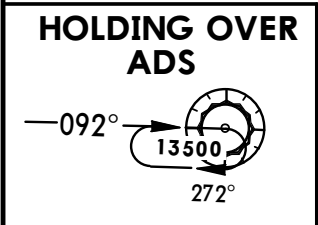
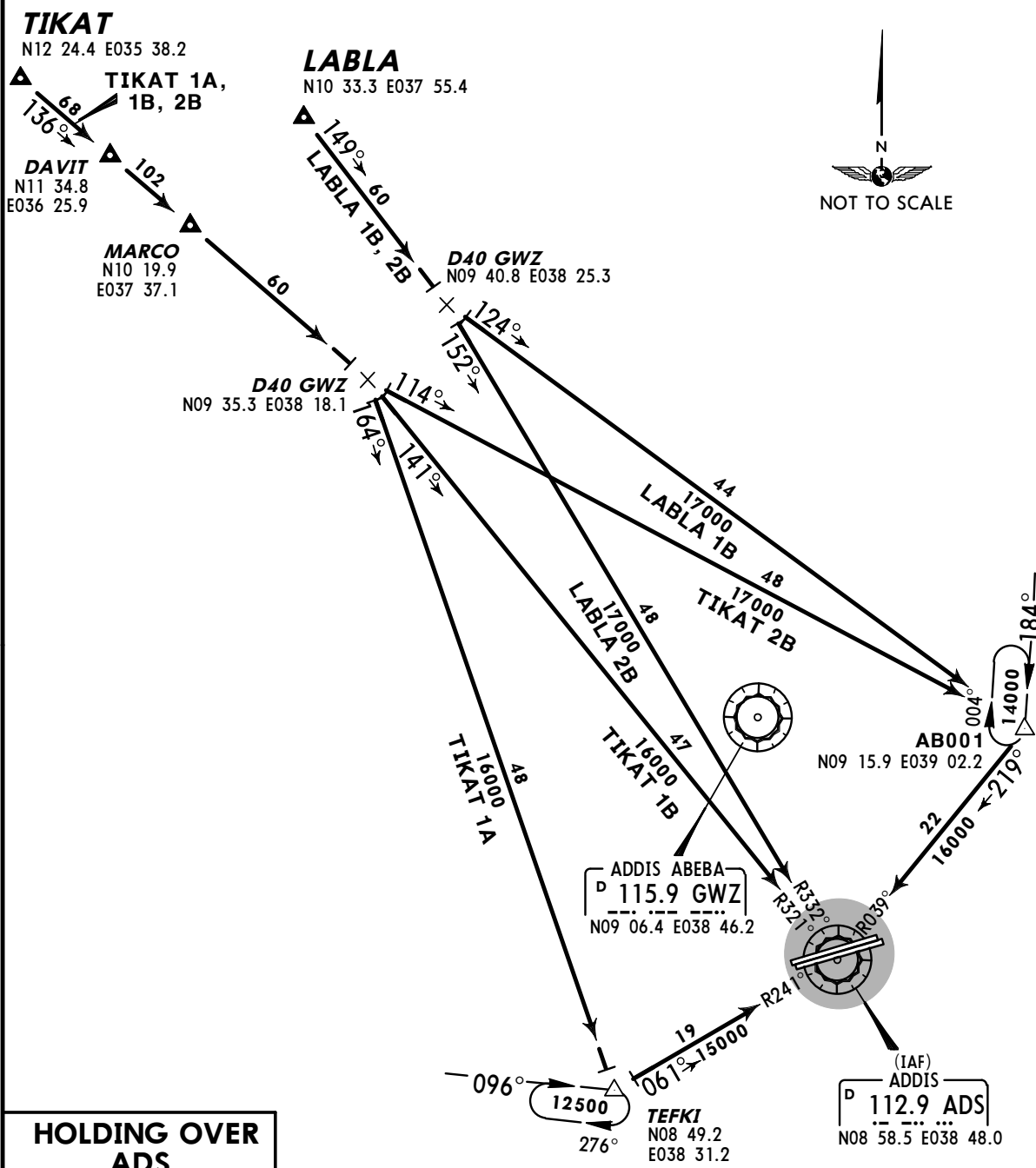
6 FEB 04 **10-2C**

STAR

Apt Elev **7626'** Alt Set: MB
Trans level: By ATC Trans alt: 14000'



LABLA 1B [LABL1B], LABLA 2B [LABL2B]
TIKAT 1A, TIKAT 1B, TIKAT 2B
RWYS 07R, 25L ARRIVALS
FROM NORTH



CHANGES: New chart.

© JEPPESEN SANDERSON, INC., 2004. ALL RIGHTS RESERVED.

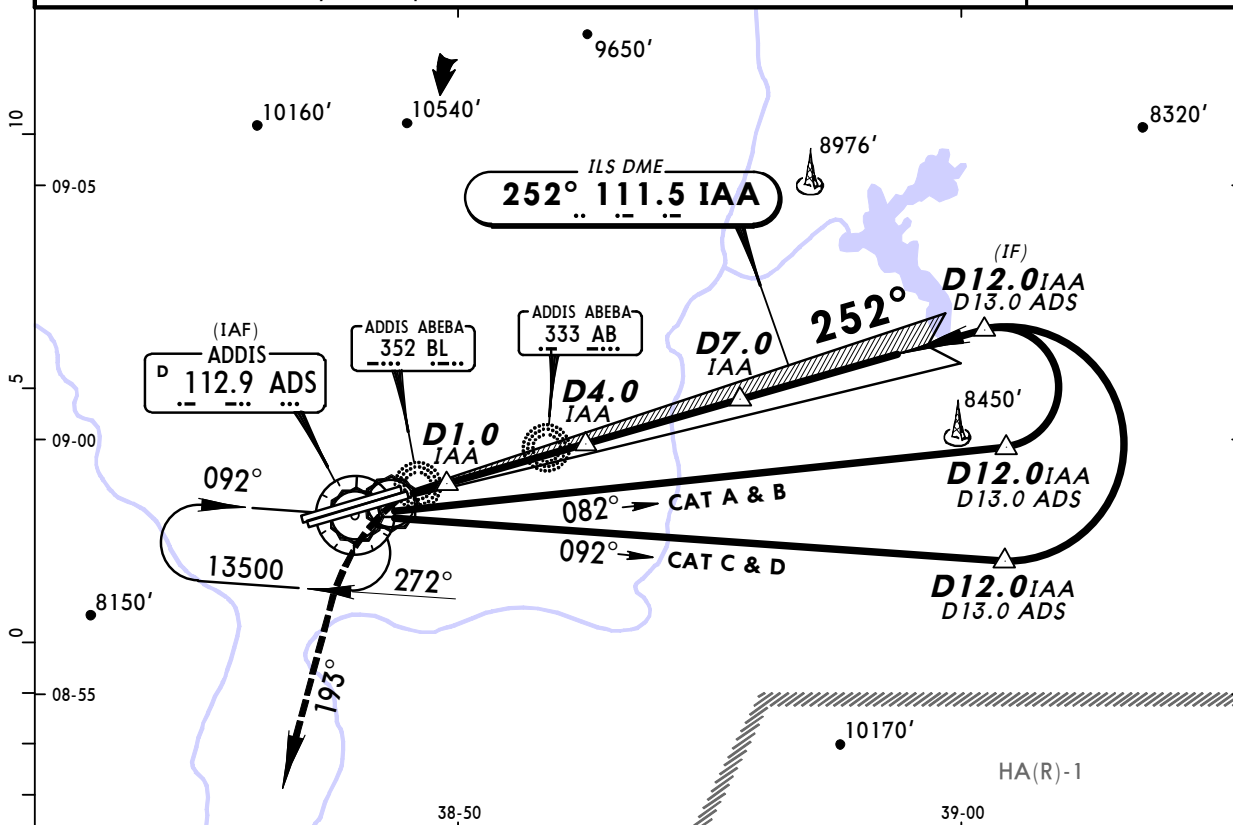
Jeppesen SIMCharts

This aeronautical chart is intended for flight simulation use ONLY and will vary from actual navigational charts.

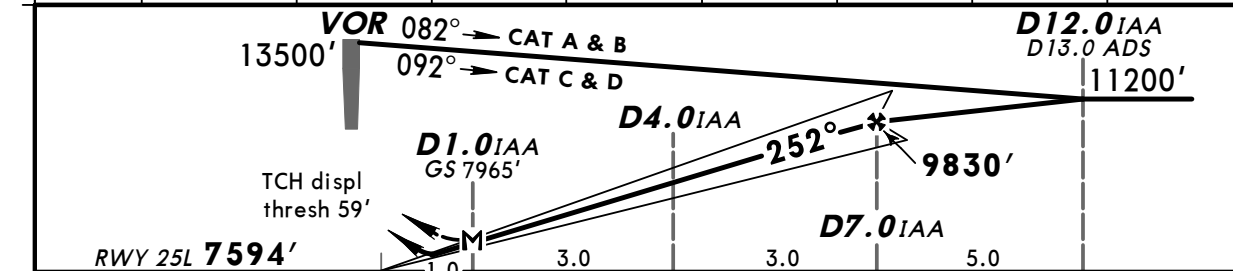
HAAB/ADD
BOLE INTL

JEPPESSEN ADDIS ABEBA, ETHIOPIA
5 NOV 04 **(11-1)**
ILS Rwy 25L

BOLE Approach		BOLE Tower			Ground
119.7		118.1			121.9
LOC IAA 111.5	Final Apch Crs 252°	GS D7.0 IAA 9830' (2236')	ILS DA(H) 7794' (200')	Apt Elev 7625'	13,500'
RWY 7594'					
MISSED APCH: Turn LEFT as soon as practicable (MAX IAS 185 KT) to intercept R-193 ADS climbing to 13500', then turn RIGHT to join VOR holding.					
Alt Set: MB		Rwy Elev: 249 MB	Trans level: By ATC	Trans alt: 14000'	MSA ADS VOR
ILS DME reads zero at rwy 25L displaced threshold.					



LOC (GS out)	IAA DME	1.0	2.0	3.0	4.0	5.0	6.0	7.0
	ALTITUDE	7970'	8280'	8590'	8900'	9210'	9520'	9830'



Gnd speed-Kts	70	90	100	120	140	160	HIALS PAPI	Refer to Missed Apch above	
Desc Grad D12.0 - D7.0 IAA	4.5%	319	410	456	547	638			729
ILS GS 2.95° or LOC Descent Gradient	5.1%	370	476	529	635	741			847

STRAIGHT-IN LANDING RWY 25L				CIRCLE-TO-LAND			
ILS DA(H) 7794' (200')		LOC (GS out) MDA(H) 7970' (376')		Not authorized North of rwy between R-315 and R-068.			
FULL		ALS out		Max Kts	MDA(H)		
1200m		1600m			100	8110' (485')	1600m
1200m		1600m		135	8150' (525')	1600m	
1200m		2000m		180	8650' (1025') 4800m		
1200m		2000m		205			

PANS OPS 3

CHANGES: GS angle.

© JEPPESSEN SANDERSON, INC., 2003, 2004. ALL RIGHTS RESERVED.

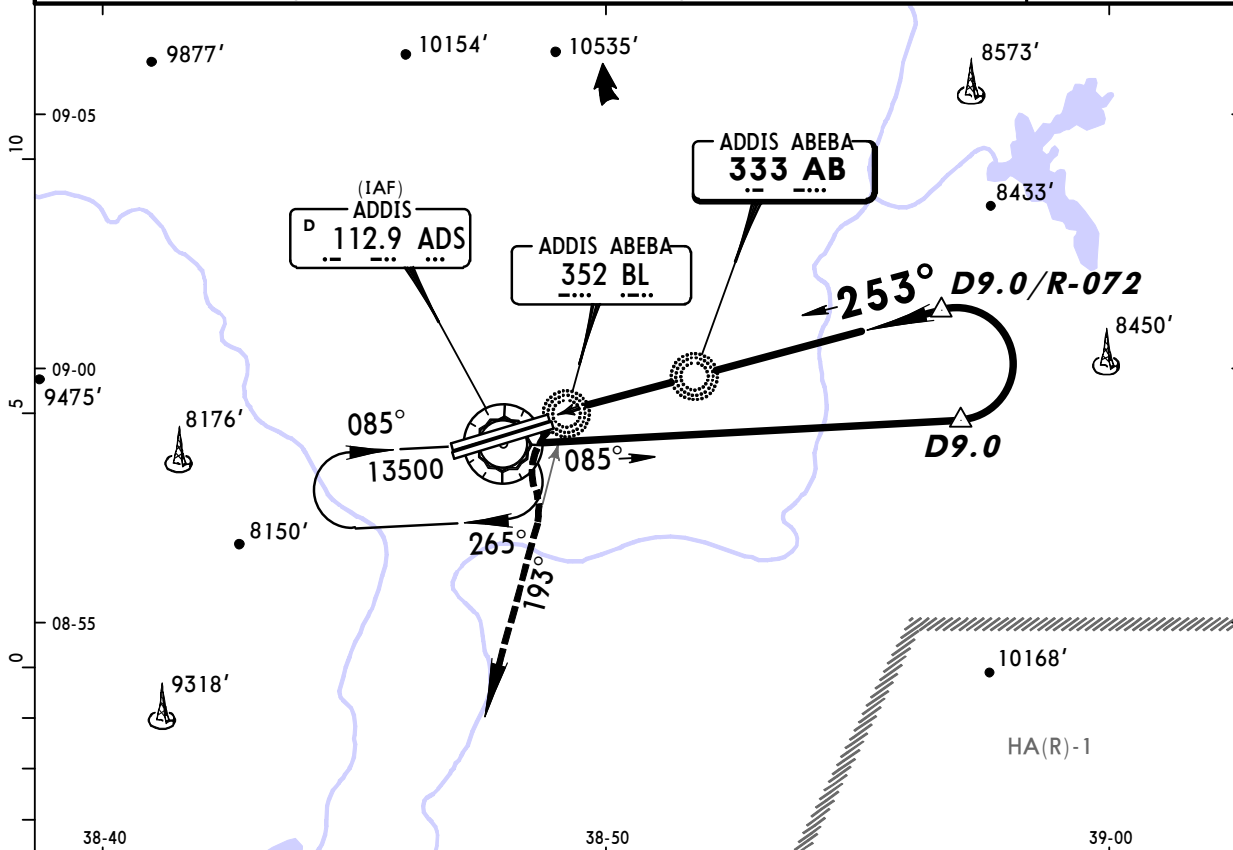
Jeppesen SIMCharts

This aeronautical chart is intended for flight simulation use ONLY and will vary from actual navigational charts.

HAAB/ADD
BOLE INTL

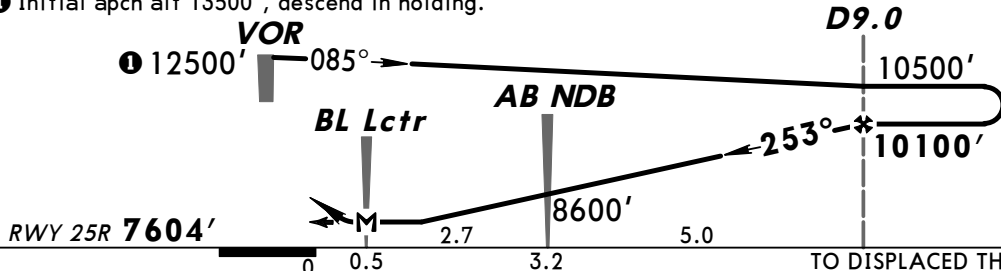
JEPPESEN ADDIS ABEBA, ETHIOPIA
25 JUL 03 (16-1) CAT A & B VOR DME NDB Rwy 25R

BOLE Approach		BOLE Tower			Ground
119.7		118.1			121.9
NDB AB 333	Final Apch Crs 253°	Minimum Alt D9.0 10100' (2496')	MDA(H) 8000' (396')	Apt Elev 7626'	13,500'
RWY 7604'					
MISSED APCH: Turn LEFT as soon as practicable (MAX IAS 185 KT) onto track 193° from BL Lctr climbing to 13500', then turn RIGHT and rejoin VOR holding.					MSA ADS VOR
Alt Set: MB	Rwy Elev: 249 MB	Trans level: By ATC	Trans alt: 14000'		



ADS DME	3.0	4.0	5.0	6.0
ALTITUDE	8300'	8600'	8900'	9200'

Initial apch alt 13500', descend in holding.



Gnd speed-Kts	70	90	100	120	140	160	PAPI	Refer to Missed apch above
Descent Gradient 5.0%	354	456	506	608	709	810		
MAP at BL Lctr								

STRAIGHT-IN LANDING RWY 25R		CIRCLE-TO-LAND	
MDA(H) 8000' (396')		Not authorized North of rwy between R-315 and R-068.	
A	1600m	Max Kts	MDA(H)
B		100	8110' (484') 1600m
C	NOT APPLICABLE	135	8150' (524') 1600m
D		C	NOT APPLICABLE
		D	NOT APPLICABLE

PANS OPS 3

CHANGES: Trans alt.

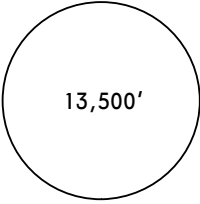
© JEPPESEN SANDERSON, INC., 2003. ALL RIGHTS RESERVED.

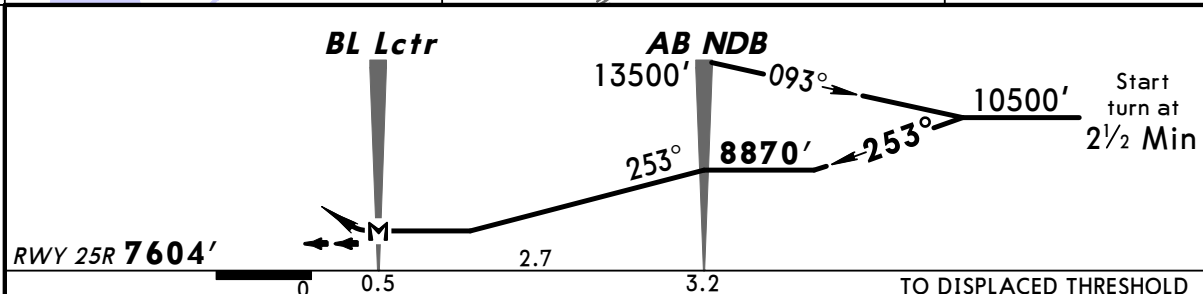
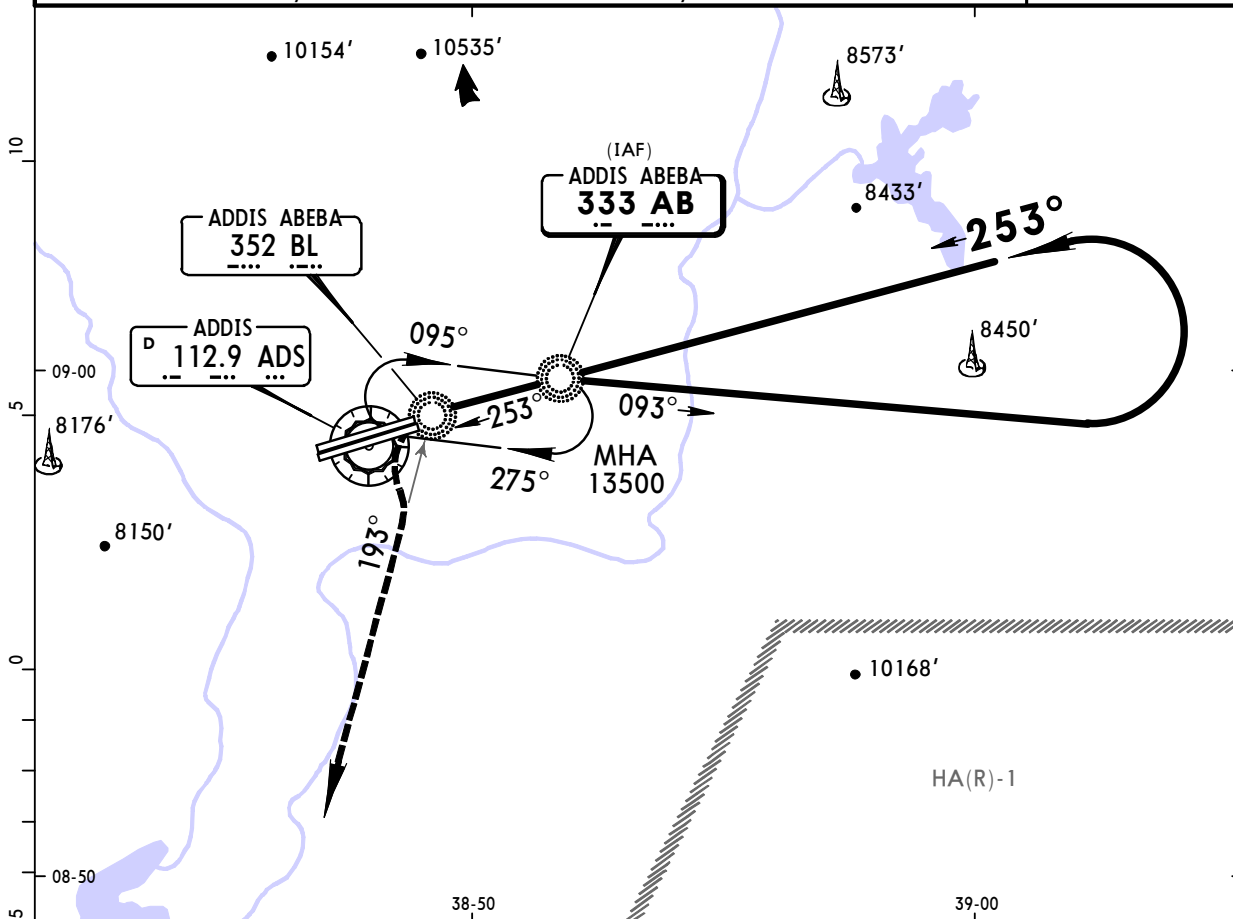
Jeppesen SIMCharts

This aeronautical chart is intended for flight simulation use ONLY and will vary from actual navigational charts.

HAAB/ADD
BOLE INTL

JEPPESEN **ADDIS ABEBA, ETHIOPIA**
25 JUL 03 **(16-2)** **CAT C & D 2 NDB Rwy 25R**

BOLE Approach		BOLE Tower		Ground
119.7		118.1		121.9
NDB AB 333	Final Apch Crs 253°	Minimum Alt AB NDB 8870' (1266')	MDA(H) 8020' (416')	Apt Elev 7626' RWY 7604'
MISSED APCH: Turn LEFT as soon as practicable (MAX IAS 185 KT) onto track 193° from BL Lctr climbing to 13500', then turn RIGHT and rejoin holding.				 13,500' MSA AB NDB
Alt Set: MB	Rwy Elev: 249 MB	Trans level: By ATC	Trans alt: 14000'	



MAP at BL Lctr					PAPI	Refer to Missed apch above
----------------	--	--	--	--	------	----------------------------

STRAIGHT-IN LANDING RWY 25R		CIRCLE-TO-LAND	
MDA(H) 8020' (416')		Not authorized North of rwy between R-315 and R-068.	
A	SEE 16-3	Max Kts A	MDA(H)
B	2000m	B	SEE 16-3
C	2400m	180	8650' (1024') 4800m
D		205	

PANS OPS 3

CHANGES: Trans alt.

© JEPPESEN SANDERSON, INC., 2003. ALL RIGHTS RESERVED.

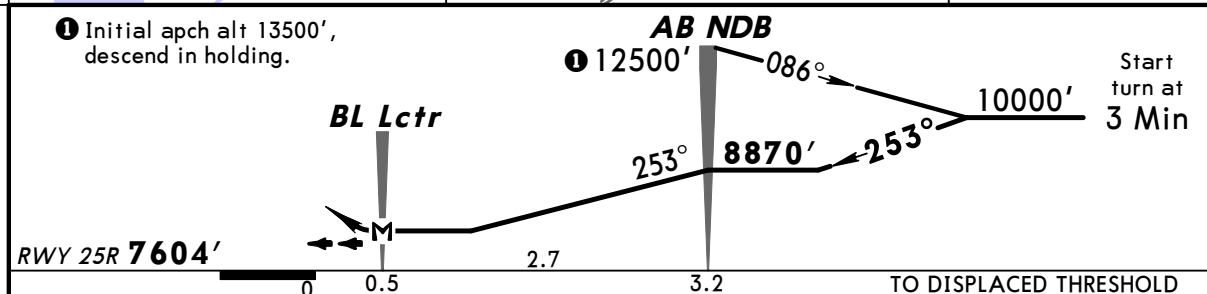
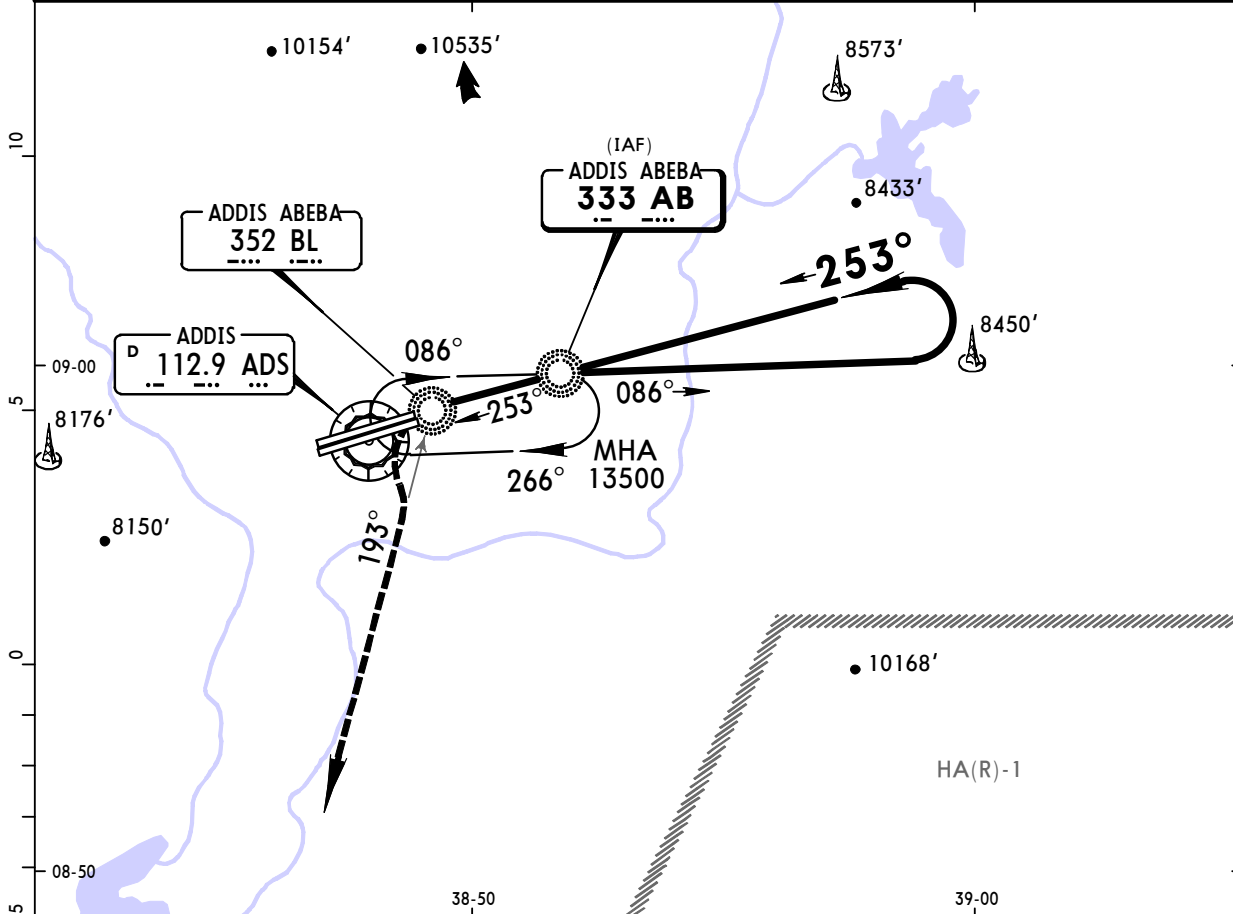
Jeppesen SIMCharts

This aeronautical chart is intended for flight simulation use ONLY and will vary from actual navigational charts.

HAAB/ADD
BOLE INTL

JEPPESSEN ADDIS ABEBA, ETHIOPIA
25 JUL 03 (16-3) CAT A & B 2 NDB Rwy 25R

BOLE Approach		BOLE Tower		Ground	
119.7		118.1		121.9	
NDB AB 333	Final Apch Crs 253°	Minimum Alt AB NDB 8870' (1266')	MDA(H) 8020' (416')	Apt Elev 7626' RWY 7604'	13,500' MSA AB NDB
MISSED APCH: Turn LEFT as soon as practicable (MAX IAS 185 KT) onto track 193° from BL Lctr climbing to 13500', then turn RIGHT and rejoin holding.					
Alt Set: MB	Rwy Elev: 249 MB	Trans level: By ATC	Trans alt: 14000'		



MAP at BL Lctr					PAPI	Refer to Missed apch above
----------------	--	--	--	--	------	----------------------------

STRAIGHT-IN LANDING RWY 25R		CIRCLE-TO-LAND	
MDA(H) 8020' (416')		Not authorized North of rwy between R-315 and R-068.	
A	1600m	Max Kts	MDA(H)
B		100	8110' (484') 1600m
C	SEE 16-2	135	8150' (524') 1600m
D		C	SEE 16-2
		D	SEE 16-2

PANS OPS 3

CHANGES: Trans alt.

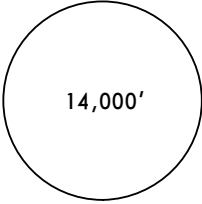
© JEPPESSEN SANDERSON, INC., 2003. ALL RIGHTS RESERVED.

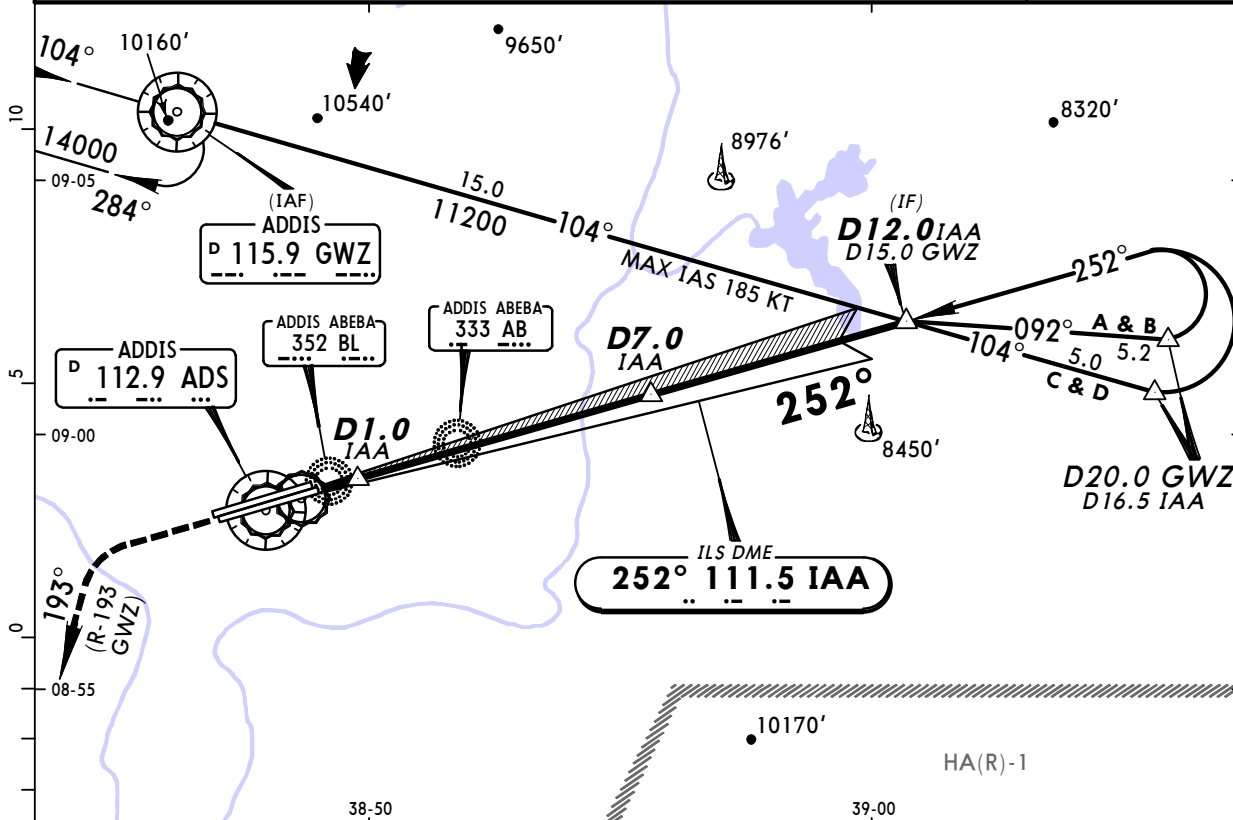
Jeppesen SIMCharts

This aeronautical chart is intended for flight simulation use ONLY and will vary from actual navigational charts.

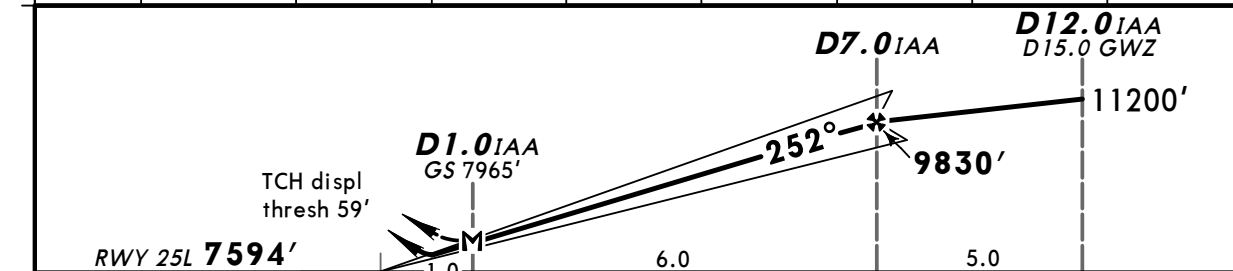
HAAB/ADD
BOLE INTL

JEPPESSEN ADDIS ABEBA, ETHIOPIA
5 NOV 04 **(11-2)** via GWZ VOR **ILS Rwy 25L**

BOLE Approach		BOLE Tower		Ground	
119.7		118.1		121.9	
LOC IAA 111.5	Final Apch Crs 252°	GS D7.0 IAA 9830' (2236')	ILS DA(H) 7794' (200')	Apt Elev 7625' RWY 7594'	 14,000' MSA GWZ VOR
MISSED APCH: Turn LEFT as soon as practicable (MAX IAS 185 KT) to intercept R-193 GWZ climbing to 14000', then turn RIGHT to join GWZ VOR holding.					
Alt Set: MB Rwy Elev: 249 MB Trans level: By ATC Trans alt: 14000' ILS DME reads zero at rwy 25L displaced threshold.					



LOC (GS out)	IAA DME	1.0	2.0	3.0	4.0	5.0	6.0	7.0
	ALTITUDE	7970'	8280'	8590'	8900'	9210'	9520'	9830'



<i>Gnd speed-Kts</i>	70	90	100	120	140	160	HIALS PAPI Refer to Missed Apch above	
<i>Desc Grad D12.0 - D7.0 IAA</i>	4.5%	319	410	456	547	638		729
<i>ILS GS 2.95° or LOC Descent Gradient</i>	5.1%	370	476	529	635	741		847

STRAIGHT-IN LANDING RWY 25L				CIRCLE-TO-LAND			
ILS		LOC (GS out)		Not authorized North of rwy between R-315 and R-068.			
DA(H) 7794' (200')		MDA(H) 7970' (376')					
FULL		ALS out		Max Kts			
1200m		1600m		100		8110' (485') 1600m	
				135		8150' (525') 1600m	
				180		8650' (1025') 4800m	
				205			
2000m							

CHANGES: New procedure.

© JEPPESSEN SANDERSON, INC., 2004. ALL RIGHTS RESERVED.

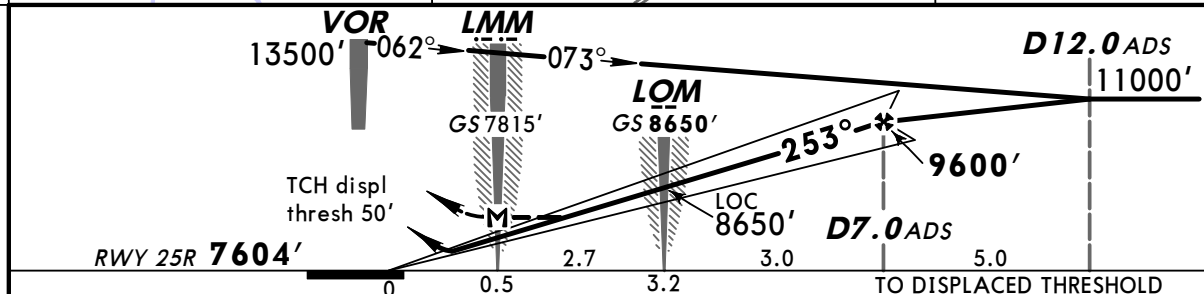
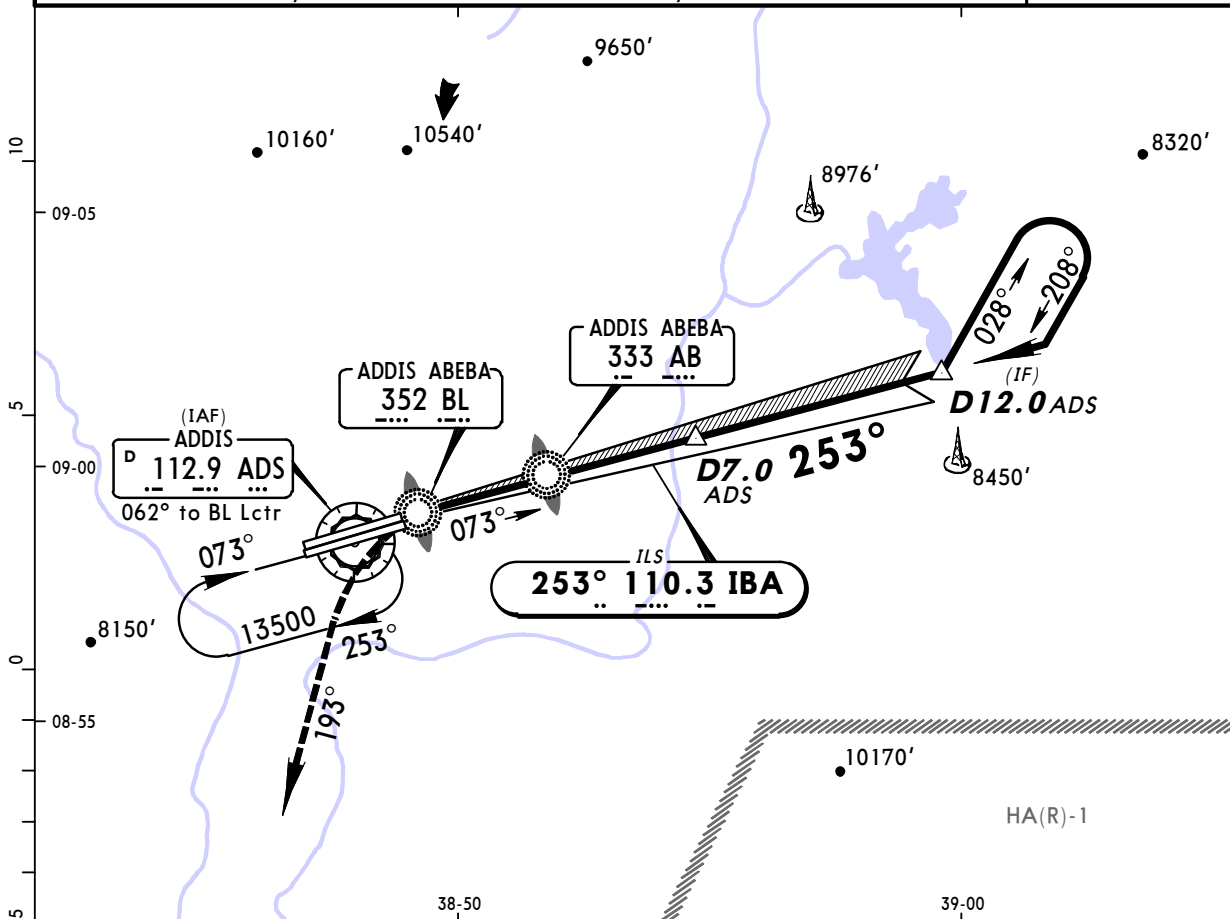
Jeppesen SIMCharts

This aeronautical chart is intended for flight simulation use ONLY and will vary from actual navigational charts.

HAAB/ADD
BOLE INTL

JEPPESEN ADDIS ABEBA, ETHIOPIA
5 NOV 04 **(11-3)**
ILS Rwy 25R

BOLE Approach		BOLE Tower		Ground	
119.7		118.1		121.9	
<i>LOC</i> IBA 110.3	<i>Final</i> <i>Apch Crs</i> 253°	<i>GS</i> <i>LOM</i> 8650' (1046')	<i>ILS</i> <i>DA(H)</i> 7804' (200')	<i>Apt Elev</i> 7625' RWY 7604'	13,500' MSA ADS VOR
MISSED APCH: Turn LEFT as soon as practicable (MAX IAS 185 KT) to intercept R-193 ADS climbing to 13500', then turn RIGHT to join VOR holding.					
Alt Set: MB	Rwy Elev: 249 MB	Trans level: By ATC	Trans alt: 14000'		



<i>Gnd speed-Kts</i>	70	90	100	120	140	160	PAPI	Refer to Missed Apch above
<i>Desc Grad D12.0-D7.0 ADS</i> 4.6%	326	419	466	559	652	745		
<i>ILS GS 2.95° or</i> <i>LOC Descent Gradient</i> 5.2%	370	476	529	635	741	847		

STRAIGHT-IN LANDING RWY 25R			CIRCLE-TO-LAND		
ILS <i>DA(H)</i> 7804' (200')		LOC (GS out) <i>MDA(H)</i> 7860' (256')		Not authorized North of rwy between R-315 and R-068.	
		LMM out			
A	1200m	1600m	NOT AUTH	Max Kts	
B				100	8110' (485') 1600m
C				135	8150' (525') 1600m
D				180	8650' (1025') 4800m
				205	

PANS OPS 3

Jeppesen SIMCharts

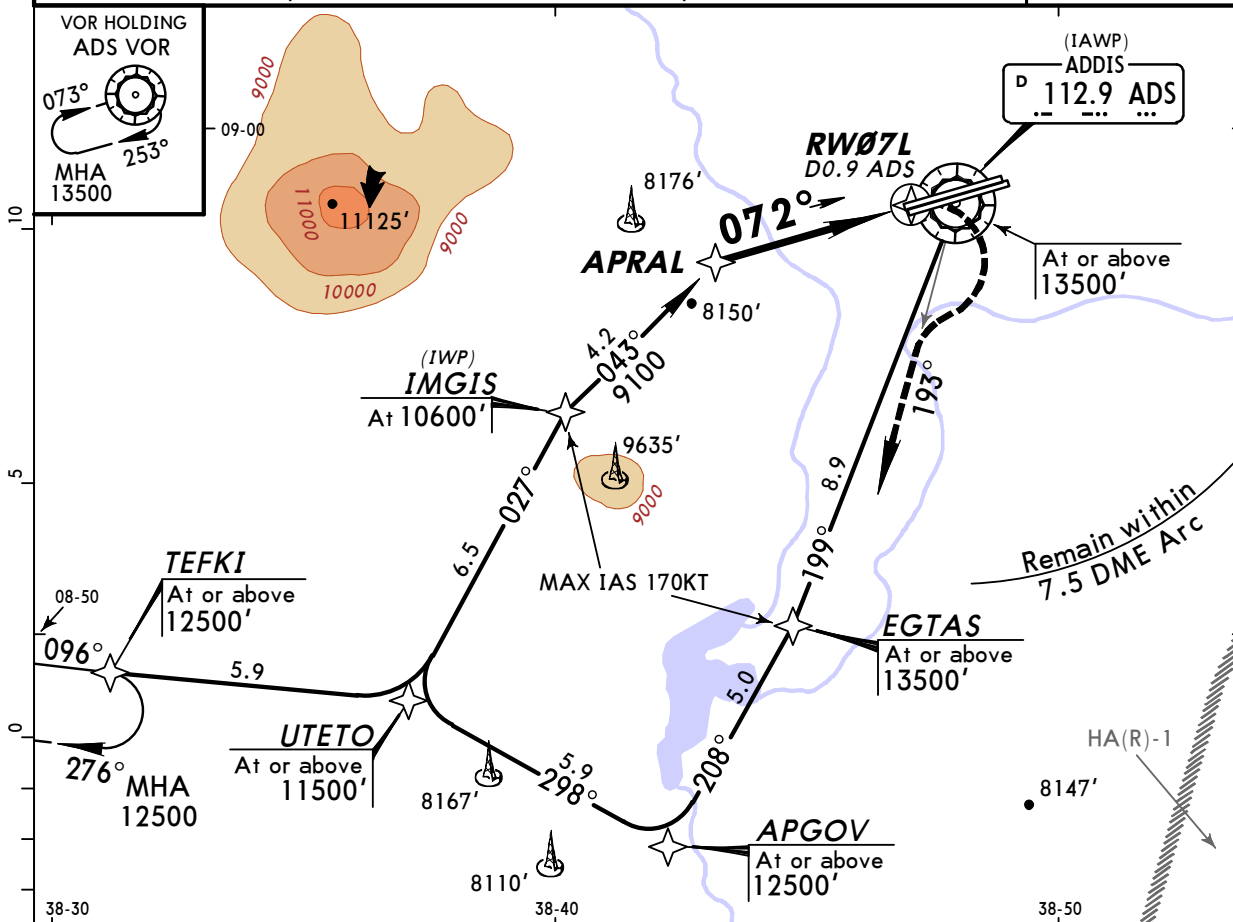
This aeronautical chart is intended for flight simulation use ONLY and will vary from actual navigational charts.

HAAB/ADD
BOLE INTL

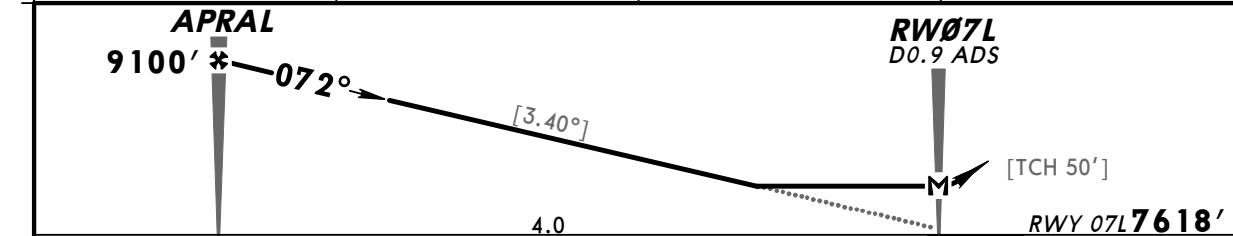
JEPPESEN
22 AUG 03 (12-1) MISSED APCH CLIMB GRADIENT MIM 4.5%

ADDIS ABEBA, ETHIOPIA
RNAV (GPS) Rwy 07L

BOLE Approach		BOLE Tower		Ground	
119.7		118.1		121.9	
RNAV	Final Apch Crs 072°	Minimum Alt APRAL 9100' (1382')	MDA(H) 8250' (632')	Apt Elev 7626'	13,500'
RWY7618'					
MISSED APCH: Turn RIGHT onto R-193 ADS climbing to 13500', then turn RIGHT to join VOR holding. MAX IAS 185 KT until established on R-193. Remain within 7.5 DME Arc.					MSA ADS VOR
Alt Set: MB	Rwy Elev: 250 MB	Trans level: By ATC	Trans alt: 14000'		



DIST to THR	3.0	2.0	1.0
ALTITUDE	8740'	8380'	8020'



Gnd speed-Kts	70	90	100	120	140	160	PAPI	185 KT	13500'	ADS
Descent angle [3.40°]	421	541	602	722	842	963				
MAP at RW07L/D0.9 ADS										

STRAIGHT-IN LANDING RWY 07L
Missed approach climb gradient mim 4.5%
MDA(H) **8250' (632')**

A	
B	
C	3000m
D	

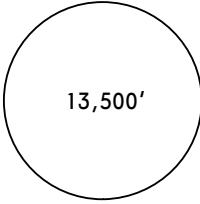
Jeppesen SIMCharts

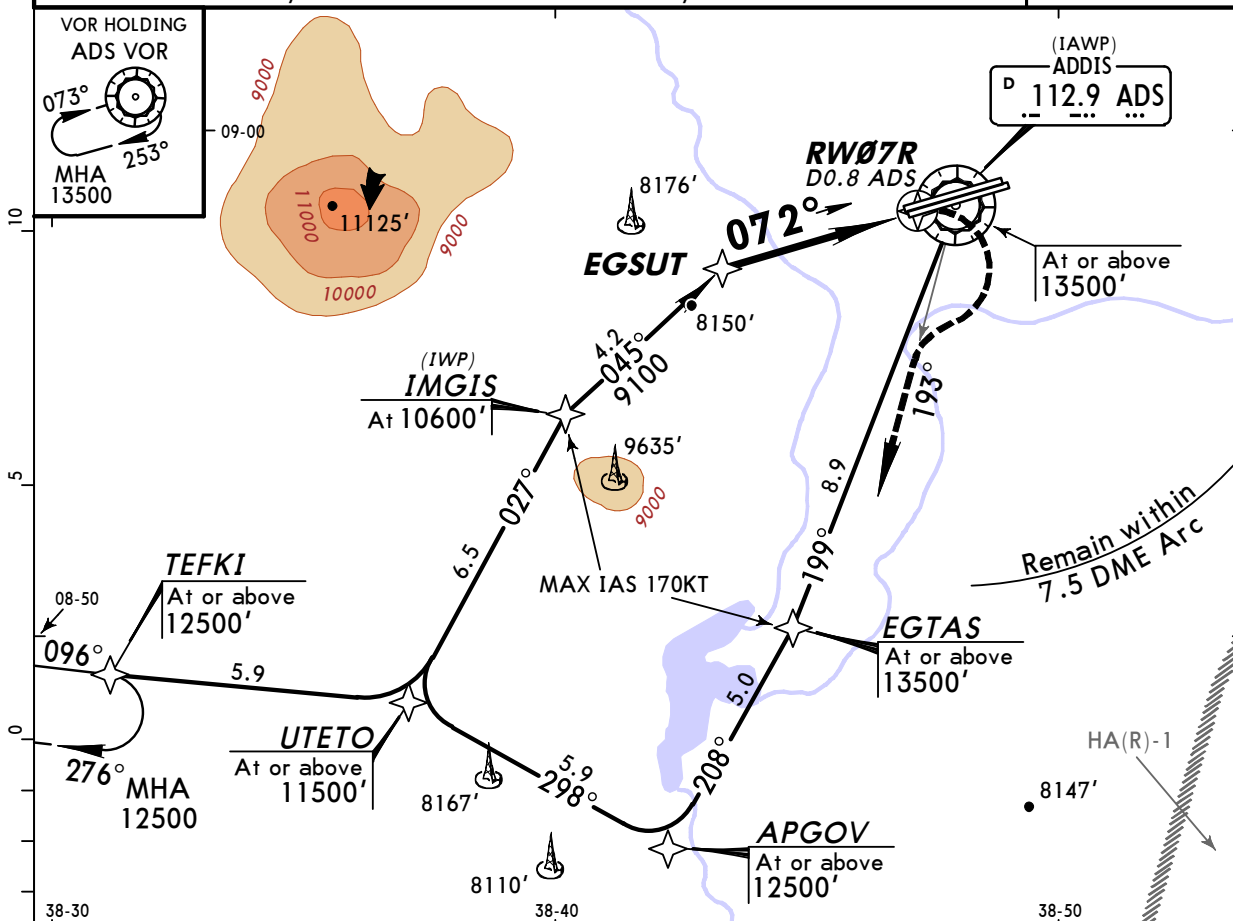
This aeronautical chart is intended for flight simulation use ONLY and will vary from actual navigational charts.

HAAB/ADD
BOLE INTL

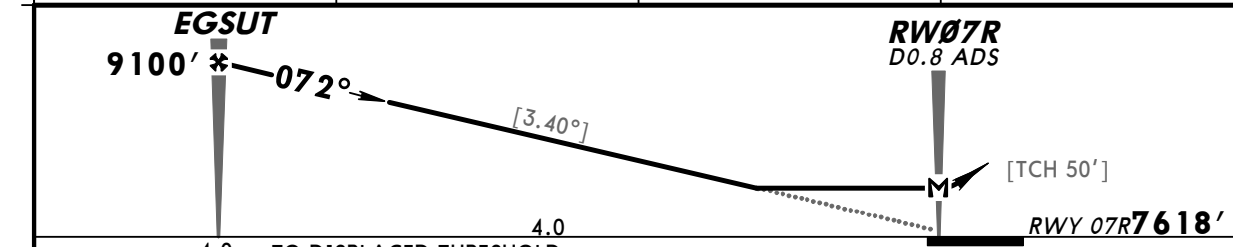
JEPPESEN
22 AUG 03 (12-2) MISSED APCH CLIMB
GRADIENT MIM 4.5%

ADDIS ABEBA, ETHIOPIA
RNAV (GPS) Rwy 07R

BOLE Approach		BOLE Tower		Ground	
119.7		118.1		121.9	
RNAV	Final Apch Crs 072°	Minimum Alt EGSUT 9100' (1382')	MDA(H) 8250' (632')	Apt Elev 7626' RWY7618'	
MISSED APCH: Turn RIGHT onto R-193 ADS climbing to 13500', then turn RIGHT to join holding. MAX IAS 185 KT until established on R-193. Remain within 7.5 DME Arc.					
Alt Set: MB	Rwy Elev: 250 MB	Trans level: By ATC	Trans alt: 14000'		



DIST to THR	3.0	2.0	1.0
ALTITUDE	8740'	8380'	8030'



Gnd speed-Kts	70	90	100	120	140	160	185 KT max	13500' ADS onto 112.9 RT R-193
Descent angle [3.40°]	421	541	602	722	842	963		
MAP at RWY07R/D0.8 ADS								

STRAIGHT-IN LANDING RWY 07R
Missed approach climb gradient mim 4.5%
MDA(H) **8250' (632')**

A	
B	
C	3000m
D	

Jeppesen SIMCharts

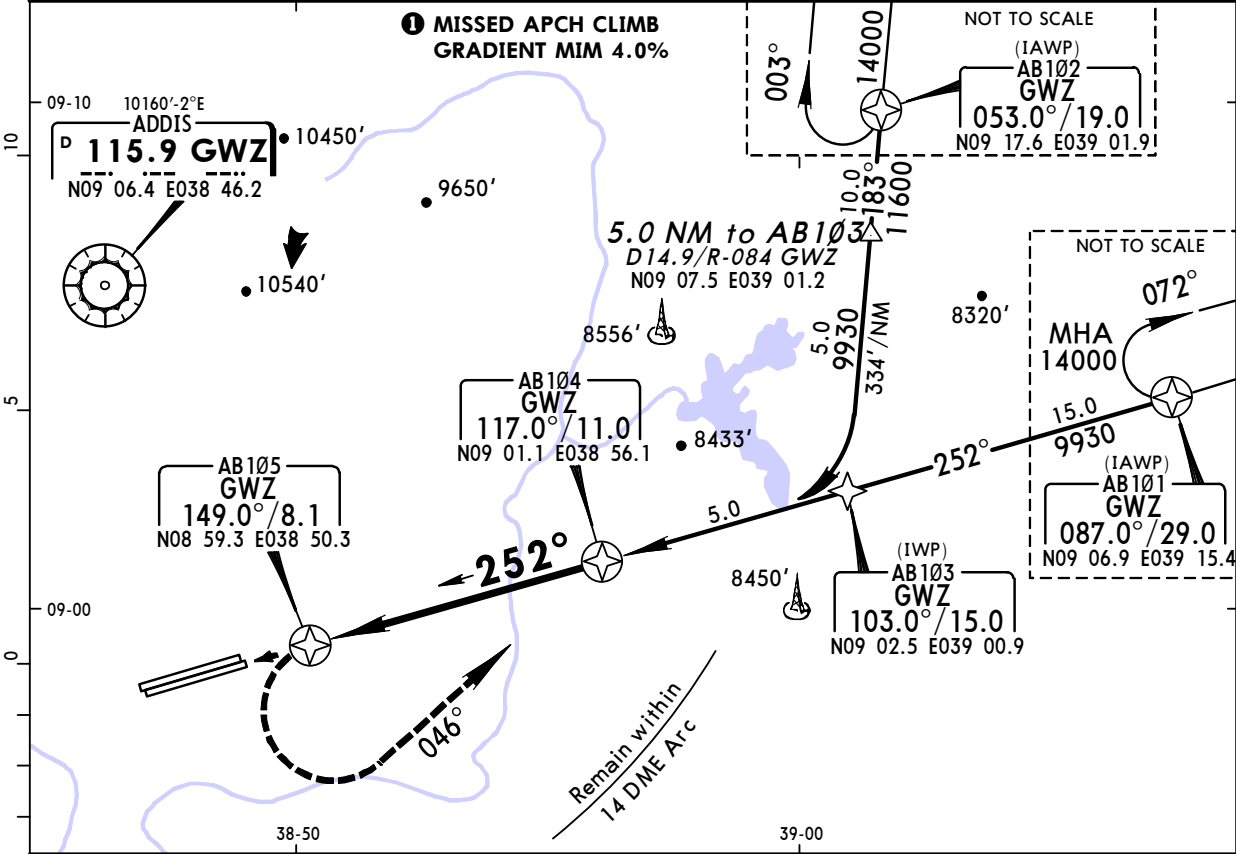
This aeronautical chart is intended for flight simulation use ONLY and will vary from actual navigational charts.

HAAB/ADD
BOLE INTL

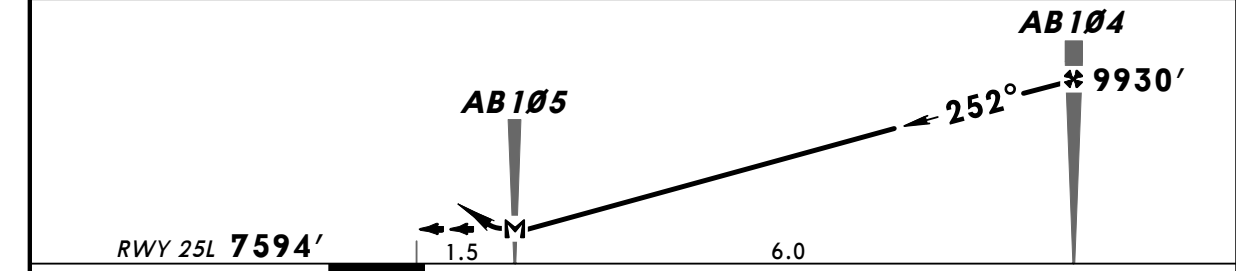
JEPPESSEN
14 NOV 03 (12-3) CAT C & D

ADDIS ABEBA, ETHIOPIA
ORNAV (VOR DME) Rwy 25L

BOLE Approach		BOLE Tower		Ground	
119.7		118.1		121.9	
VOR GWZ 115.9	Final Apch Crs 252°	Minimum Alt AB104 9930' (2336')	MDA(H) 8020' (426')	Apt Elev 7625' RWY 7594'	14,000'
MISSED APCH: Turn LEFT as soon as practicable onto 046° (MAX IAS 185 KT). Intercept 072° at AB104 climbing to 14000' and proceed to AB101, or as directed.					
Alt Set: MB		Rwy Elev: 249 MB		Trans level: By ATC	
				Trans alt: 14000'	
					MSA ARP



DIST to THR	1.5	2.5	3.5	4.5	5.5	6.5	7.5
ALTITUDE	8020'	8410'	8710'	9020'	9320'	9620'	9930'



Gnd speed-Kts	70	90	100	120	140	160	HIALS	Refer to Missed Apch above
Descent Gradient 5.2%	369	474	527	632	737	843		
MAP at AB105								

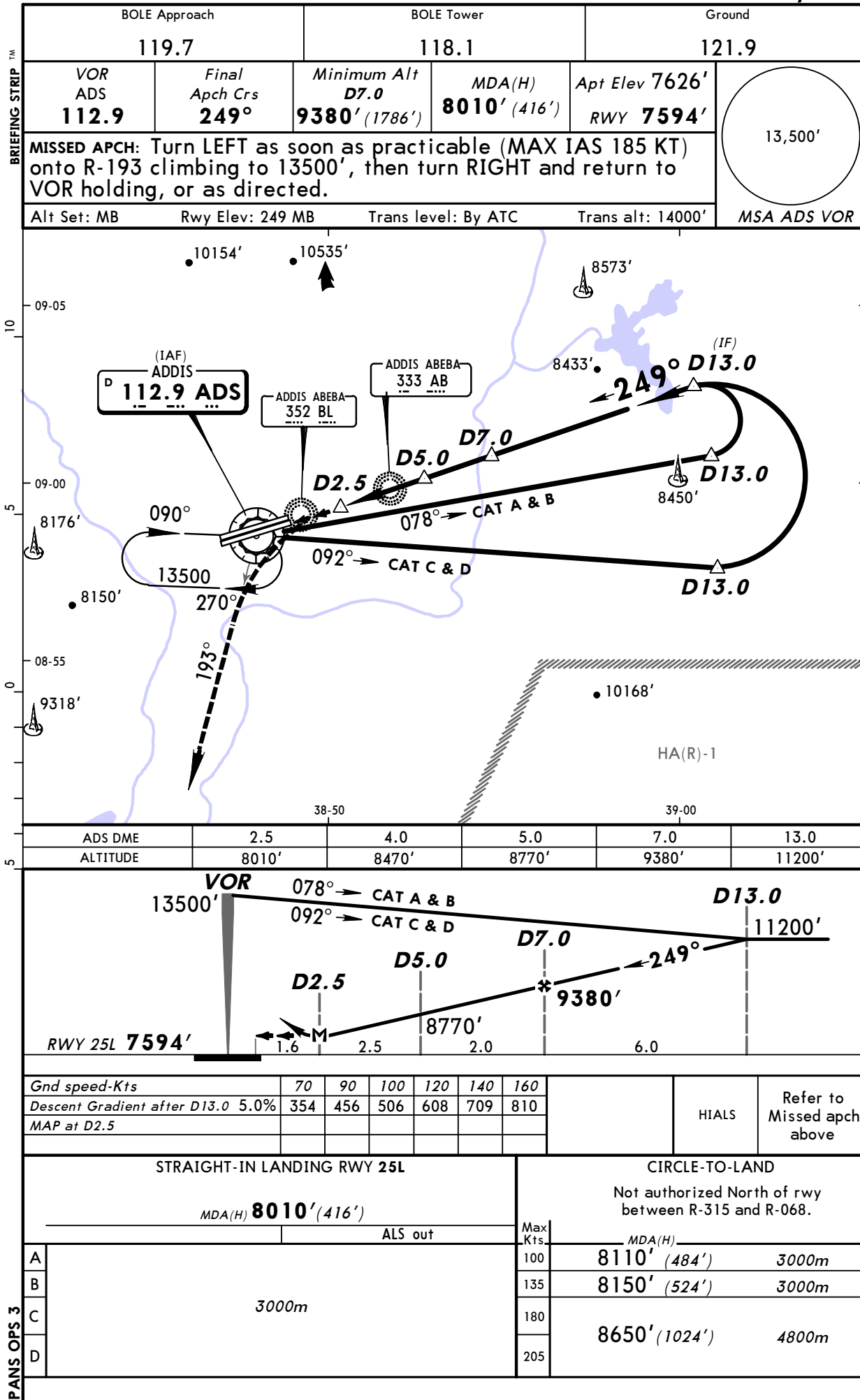
STRAIGHT-IN LANDING RWY 25L Missed approach climb gradient mim 4.0%				CIRCLE-TO-LAND Not authorized North of airport			
MDA(H) 8020' (426')				Max Kts			
ALS out				MDA(H)			
A	NOT APPLICABLE				A	NOT APPLICABLE	
B	NOT APPLICABLE				B	NOT APPLICABLE	
C	2800m				180	8650' (1025')	4800m
D	2800m				205	8650' (1025')	4800m

Jeppesen SIMCharts

This aeronautical chart is intended for flight simulation use ONLY and will vary from actual navigational charts.

HAAB/ADD
BOLE INTL

JEPPESSEN ADDIS ABEBA, ETHIOPIA
25 JUL 03 (13-1)
VOR DME Rwy 25L



PANS OPS 3

CHANGES: Trans alt.

© JEPPESSEN SANDERSON, INC., 2001, 2003. ALL RIGHTS RESERVED.

Jeppesen SIMCharts

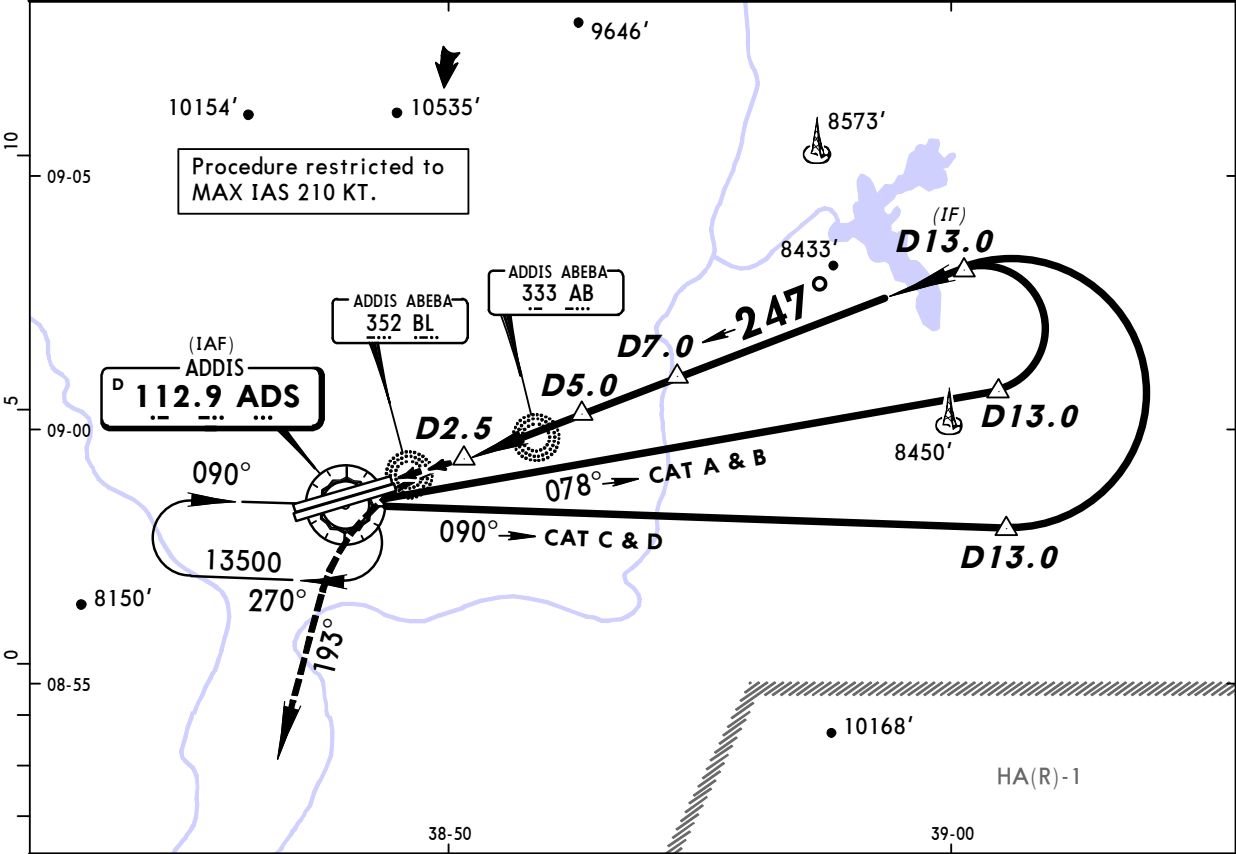
This aeronautical chart is intended for flight simulation use ONLY and will vary from actual navigational charts.

HAAB/ADD
BOLE INTL

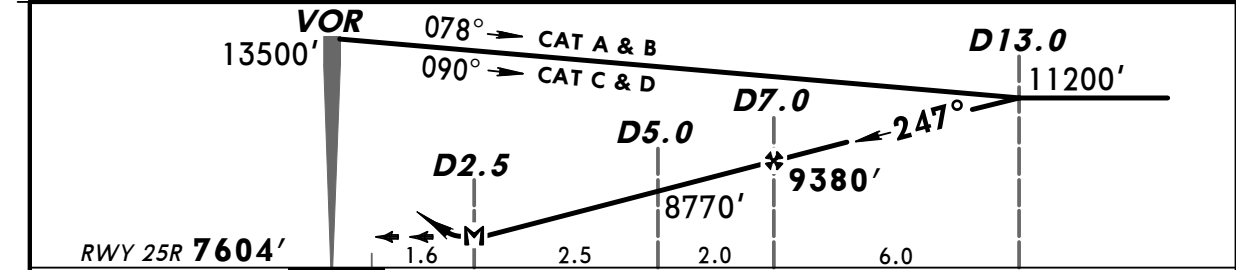
25 JUL 03 (13-2)

JEPPESSEN ADDIS ABEBA, ETHIOPIA
VOR DME Rwy 25R

BOLE Approach		BOLE Tower			Ground
119.7		118.1			121.9
VOR ADS 112.9	Final Apch Crs 247°	Minimum Alt D7.0 9380' (1776')	MDA(H) 8010' (406')	Apt Elev 7626' RWY 7604'	13,500'
MISSED APCH: Turn LEFT as soon as practicable (MAX IAS 185 KT) to intercept R-193 climbing to 13500', then turn RIGHT to join VOR holding, or as directed.					
Alt Set: MB	Rwy Elev: 249 MB	Trans level: By ATC	Trans alt: 14000'	MSA ADS VOR	



ADS DME	2.5	4.0	5.0	7.0
ALTITUDE	8010'	8470'	8770'	9380'



Gnd Speed-Kts	70	90	100	120	140	160	PAPI	Refer to Missed Apch above
Descent Gradient after D13.0 5.0%	354	456	506	608	709	810		
MAP at D2.5								

STRAIGHT-IN LANDING RWY 25R		CIRCLE-TO-LAND	
MDA(H) 8010' (406')		Not authorized North of rwy between R-315 and R-068.	
A B C D	3000m	Max Kts	MDA(H)
		100	8110' (484') 3000m
		135	8150' (524') 3000m
		180	8650' (1024') 4800m
		205	

CHANGES: Trans alt.

© JEPPESSEN SANDERSON, INC., 2001, 2003. ALL RIGHTS RESERVED.

Jeppesen SIMCharts

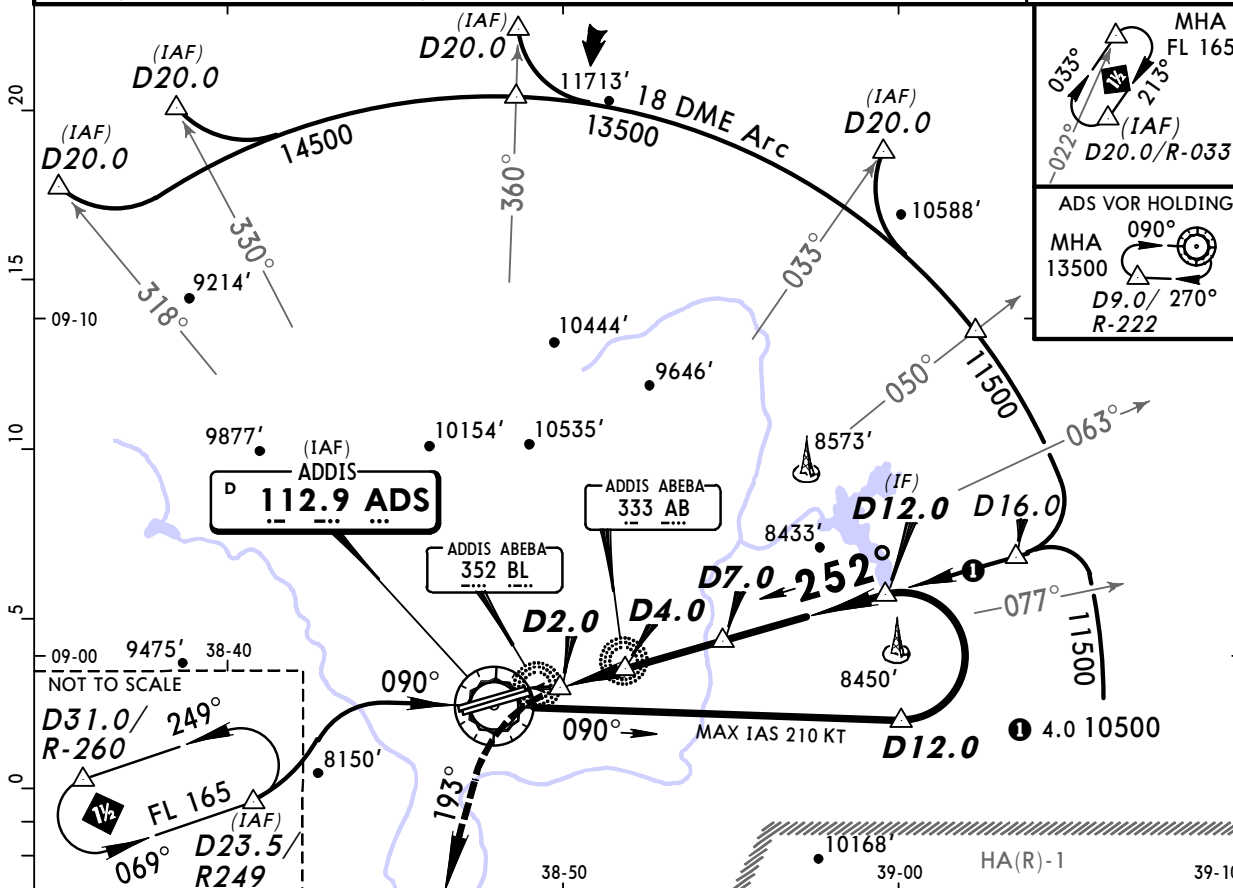
This aeronautical chart is intended for flight simulation use ONLY and will vary from actual navigational charts.

HAAB/ADD
BOLE INTL

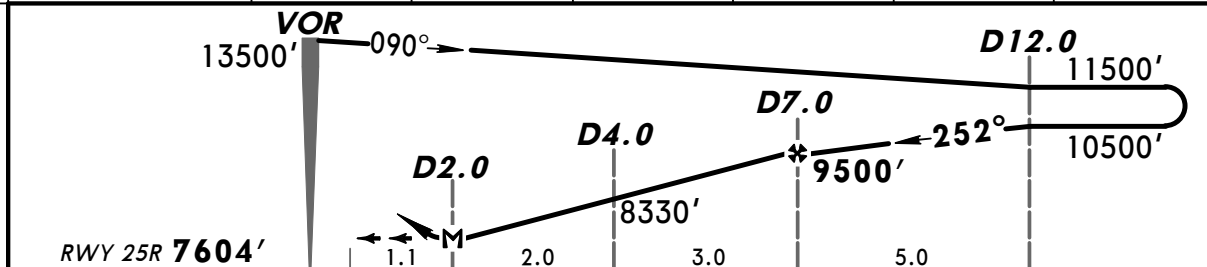
25 JUL 03 **(13-3)**

JEPPESSEN ADDIS ABEBA, ETHIOPIA
CAT C & D via Arc **VOR DME Rwy 25R**

BOLE Approach		BOLE Tower		Ground
119.7		118.1		121.9
VOR ADS 112.9	Final Apch Crs 252°	Minimum Alt D7.0 9500' (1896')	MDA(H) 8000' (396')	Apt Elev 7626' RWY 7604'
MISSED APCH: Turn LEFT as soon as practicable (MAX IAS 185 KT) to intercept R-193 and join VOR holding.				
Alt Set: MB	Rwy Elev: 249 MB	Trans level: By ATC	Trans alt: 14000'	
Final apch track offset 3° from rwy centerline.				MSA ADS VOR



ADS DME	2.0	3.0	4.0	5.0	6.0	7.0
ALTITUDE	8000'	8300'	8600'	8900'	9200'	9500'



<i>Gnd Speed-Kts</i>	70	90	100	120	140	160	PAPI	Refer to Missed Apch above
<i>Descent Gradient D12.0 - FAF 3.3%</i>	234	301	334	401	468	535		
<i>Descent Gradient after FAF 5.0%</i>	354	456	506	608	709	810		
MAP at D2.0								

STRAIGHT-IN LANDING RWY 25R		CIRCLE-TO-LAND	
MDA(H) 8000' (396')		Not authorized North of rwy between R-315 and R-068.	
A	NOT APPLICABLE	Max Kts	MDA(H)
B		A	NOT APPLICABLE
C	2100m	180	8650' (1024') 4800m
D		205	

CHANGES: Trans alt.

© JEPPESSEN SANDERSON, INC., 2003. ALL RIGHTS RESERVED.