



Make your own...
Bing!



This Bing sewing pattern has been made so that you can make your Bingster their very own Bing to cuddle. This sewing pattern is for personal use only, neither the pattern nor toys made from it are for re-sale or distribution.



You will need:

- safety scissors
- needles and thread
- iron
- pins
- bondaweb (or fabric stick glue)
- fabric marker
- chopstick (to aid stuffing)

Fabric needed:

- **Black fleece** (for main body, ears, head, arms, hair, tail) – 50 x 75cms
- **Green t-shirting** (for t-shirt and irises) – 50 x 35cms
- **Red fleece** (for dungarees) – 60 x 31cms
- **Beige fleece** (for muzzle and ear appliques) – 20 x 10cms
- **Black t-shirting** (pupils) – 10 x 5cms
- **White t-shirting** (eyes) – 12 x 5cms
- **Orange cotton** (shoe rims) – 10 x 15cms
- **White fleece** (toe applique) – 10 x 12cms
- **Grey corduroy** (soles) – 10 x 17cms

Other materials:

- Velcro 8cms
- Large yellow button plus thick black thread for sewing on
- Batting (for ears)
- Toy stuffing

* This pattern uses a 1cm hem and seam allowance unless otherwise stated.



Instructions:

Step 1: Print off the pattern and cut out the templates. Where there is more than 1 pattern piece required, flip the template to cut the 2nd and 4th pieces. The dungarees front template needs to be cut on folded fabric.

Step 2: Prepare appliques. Bondaweb the reverse side of the applique pieces. (2 white eyes, 2 green irises, 2 black pupils, 2 ear details, 2 white toes and muzzle. Iron on to the pattern pieces where indicated on the templates. Sew around the edge of each applique.

Step 3: Tail and soles. Sew gathering stitches around the outside edge of the tail piece inserting a small ball of toy stuffing. Pull tight and secure with a couple of holding stitches. Sew the tail to the seam allowance (indicated area) on one of the back body pattern pieces lining up the raw edges. Sew the outline exclamation marks on the sole pieces as indicated on the template.

Step 4: Ears and hair. Place the 2 hair pieces wrong sides together and sew all around the edge. Baste onto the front head piece (right sides facing) where indicated on the template. Pair the ear pieces with appliqued sides facing non-appliqued sides. Pin onto batting. Sew around the ears leaving the bottom straight edge for turning right sides out. Clip curves, trim excess batting and turn right side out, top stitch around the edge. Baste the ears applique side down onto the front head piece where indicated on the template.

Place the back head piece right side down onto the front head piece and sew around from the neck markings, leaving the neck space between unsewn. Turn right side out.

Step 5: Sew the foot pieces onto the bottom of the front pattern pieces. Place the front body pieces right sides together, sew the centre front. Place the back body pieces right side together and sew the centre back leaving a large gap above the tail for turning and stuffing.

Open both pieces, place right sides together, sew the shoulder seams up to the neck opening. Sew down both sides from the under arm to the bottom of the back body piece. Sew the inside legs.

Step 6: Sew the ends of the shoe rim pieces right sides together forming rings. Sew the rings (right sides facing) around the edges of the sole pieces (with the seam at the bottom). Turn right side out.

Step 7: With the main body wrong side out, baste the shoes to the bottom of the legs lining up the raw edges with right sides facing. (Ensure the seam of the rim is at the back of the leg). Sew in place.

Step 8: Pair the arms right sides together. Sew around leaving the curved ends open. Clip curves and turn right side out. With the main body wrong side out baste the arms in place, right sides facing, lining up the raw edges (ensuring the arms are the right way up). Sew in place.

Step 9: With the main body piece wrong side out baste the neck openings together ensuring the appliqued face is facing the right side of the front body. Sew in place. Turn everything right side out through the gap in the back. Stuff the arms, head and legs – you may need a pencil or chopstick to ensure stuffing gets to awkward areas. You can now sew finger detail.

T-Shirt:

Pin the back pieces to the front, right sides facing.

Sew the shoulders.

Open out and hem (wrong sides together) from the centre back bottom edge all the way up the centre back around the neck and down the centre back.

Hem the long straight sides of the sleeves.

With the right side of the t-shirt uppermost sew the sleeves in place right sides down, easing the curves as you go.

With the sides lined up sew the bottom edge of the sleeve and down the sides.

Hem the bottom edge.

Sew small pieces of Velcro at the top of the t-shirt.

Dungarees:

Fold the bottom of the legs 3cms wrong sides facing (3cm hem).

Next fold up 2cms on the right side creating a turn up.

Sew the 2 sides in the seam allowance to hold in place.

Pin the back pieces to the front, right sides facing. Sew the shoulders.

Open out and hem (wrong sides together) from the centre back bottom edge all the way up the centre back around the neck and down the centre back.

Hem the arm holes.

With the front and back right sides together, sew the sides from underarm to the bottom.

Open out the legs and hem the bottom edges.

Sew the inside legs together.

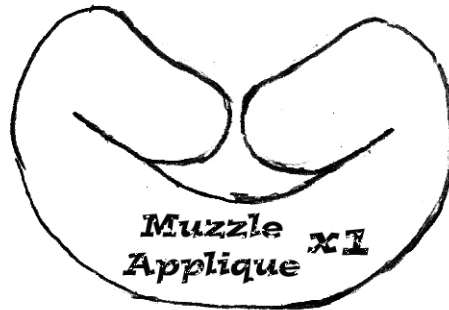
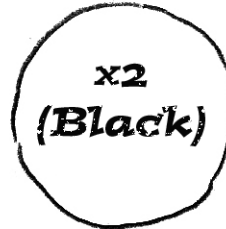
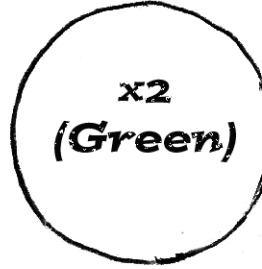
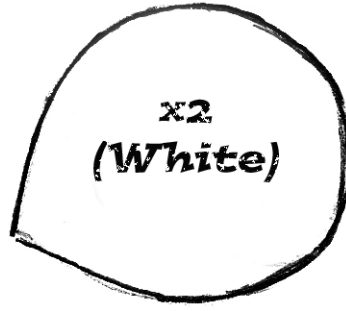
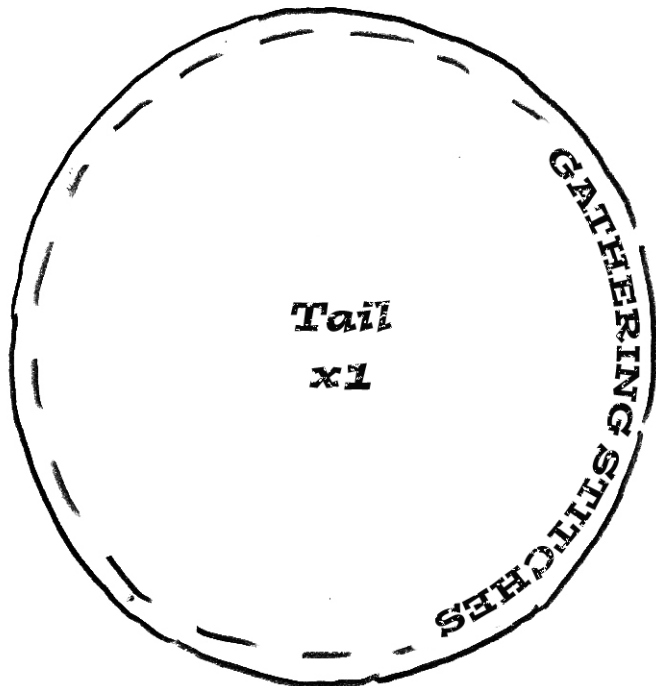
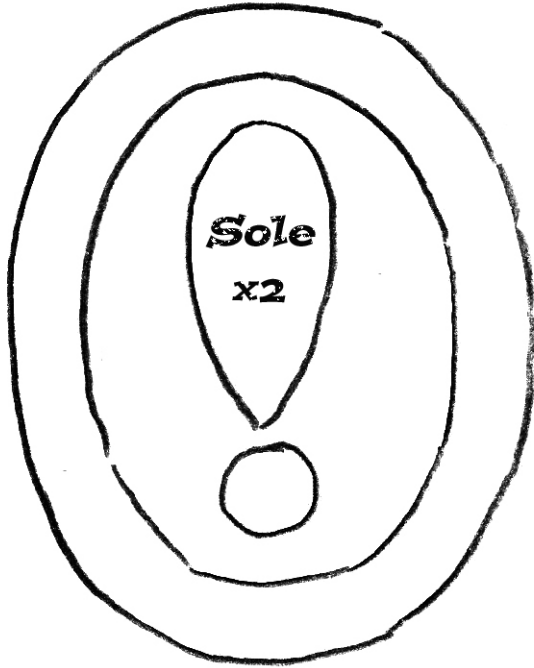
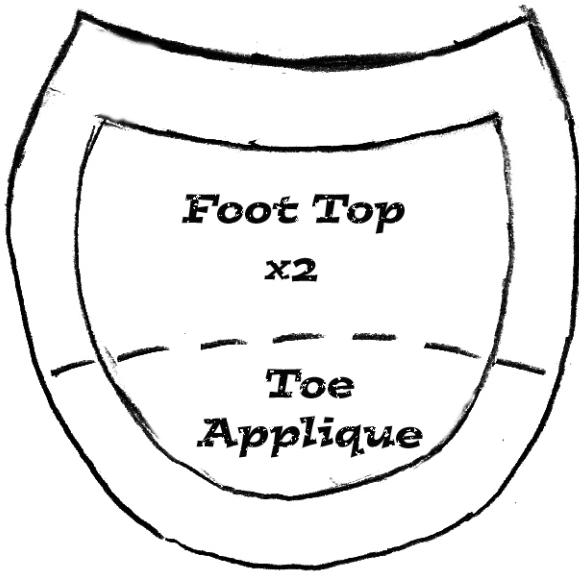
Sew Velcro at the top where indicated on the template.

Sew a large button in place on the front.

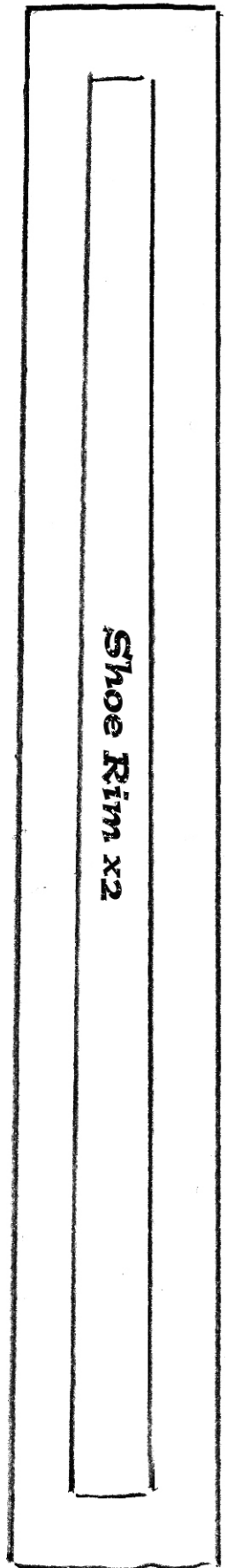
Sew the button through very firmly using thick black thread, at least 4 times, so it won't get pulled off.

Cuddles!

Hand **Bing** over to your lucky **Bingster**
and let the cuddles commence!

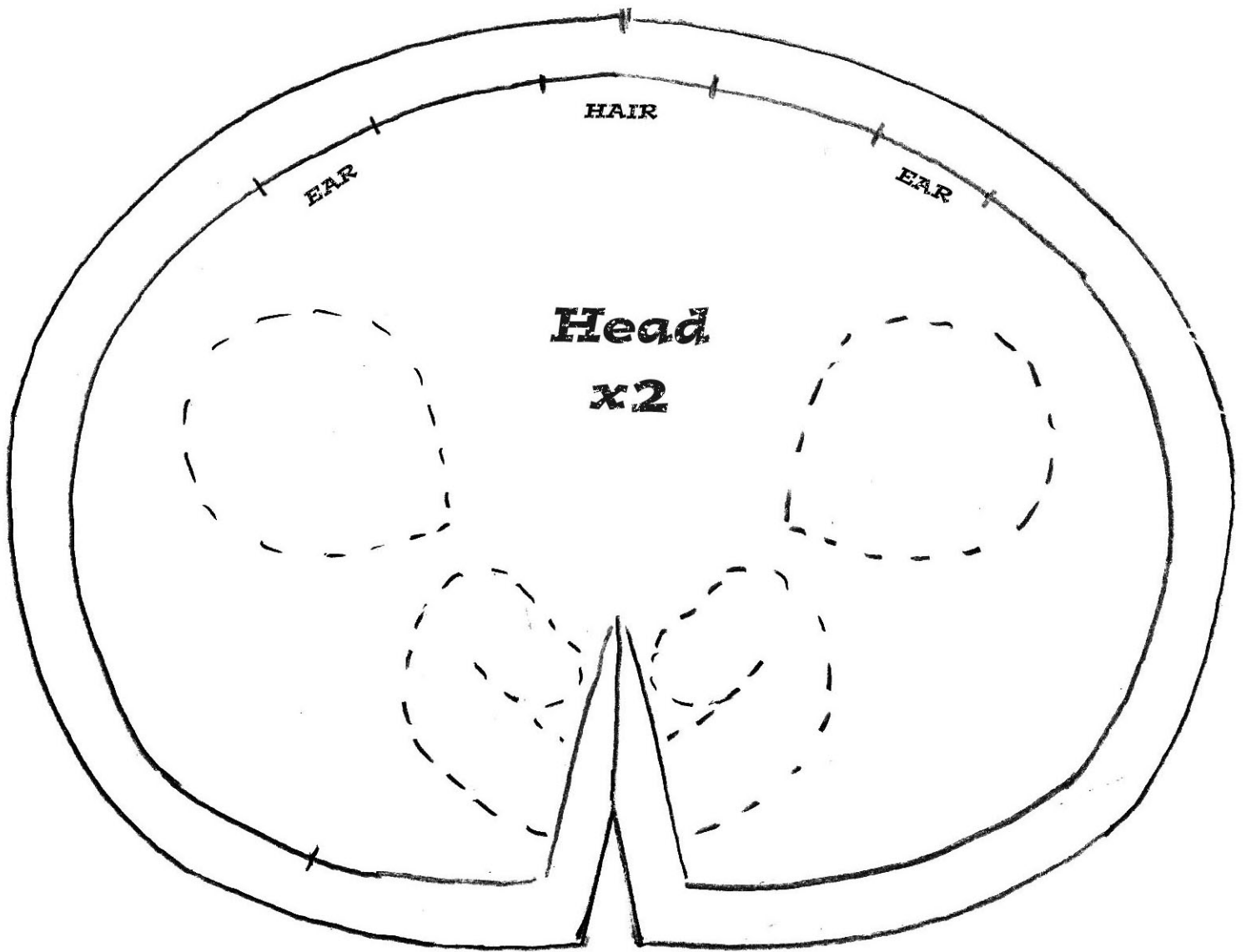


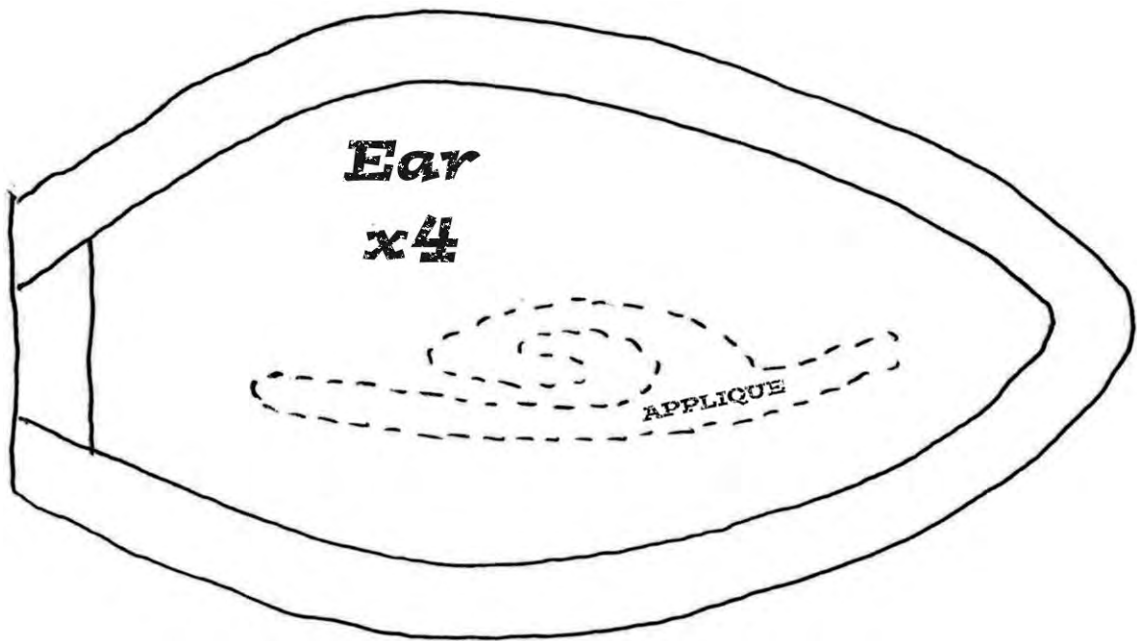
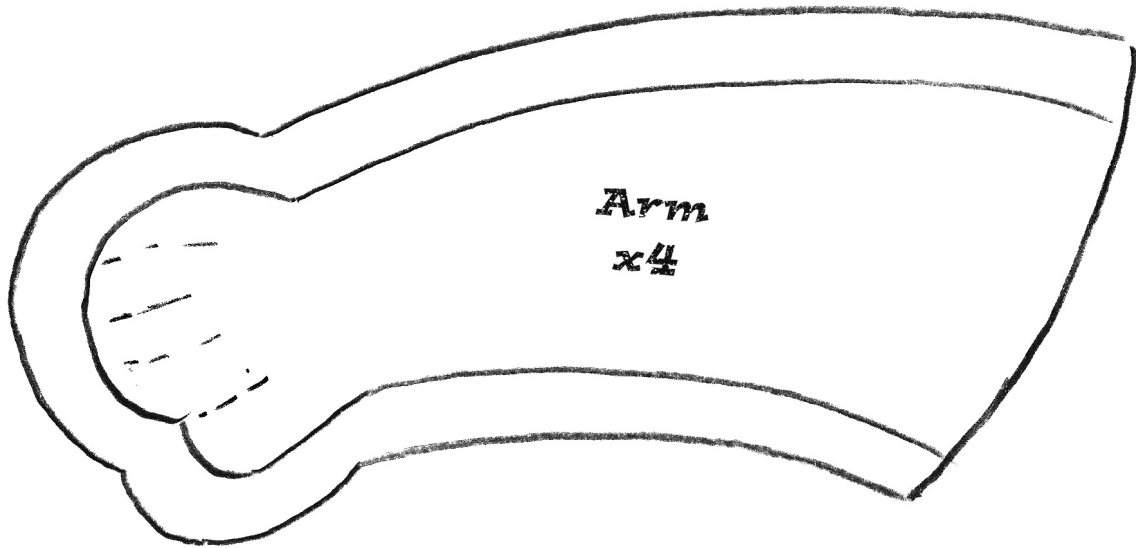
EYE APPLIQUES

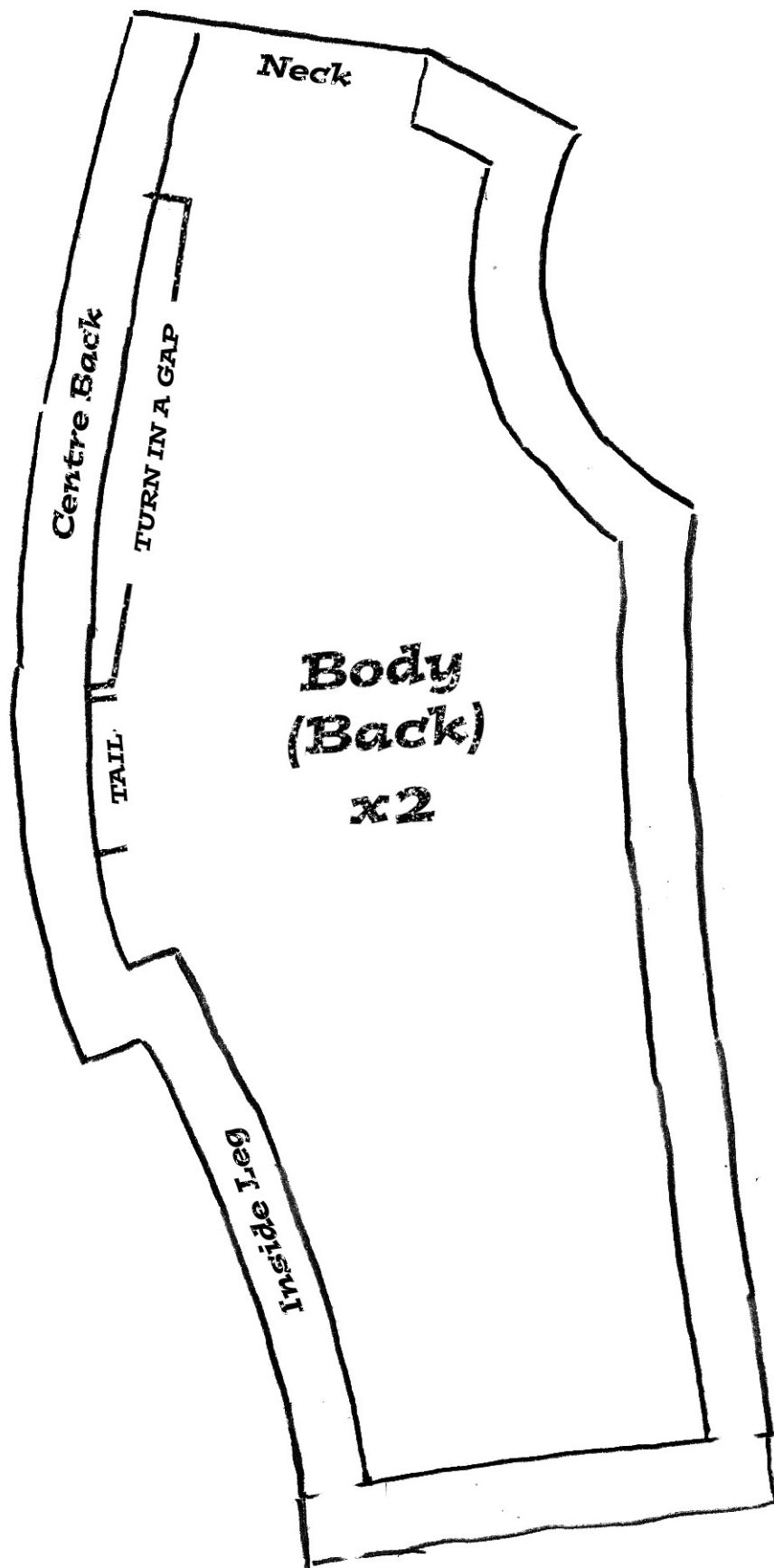


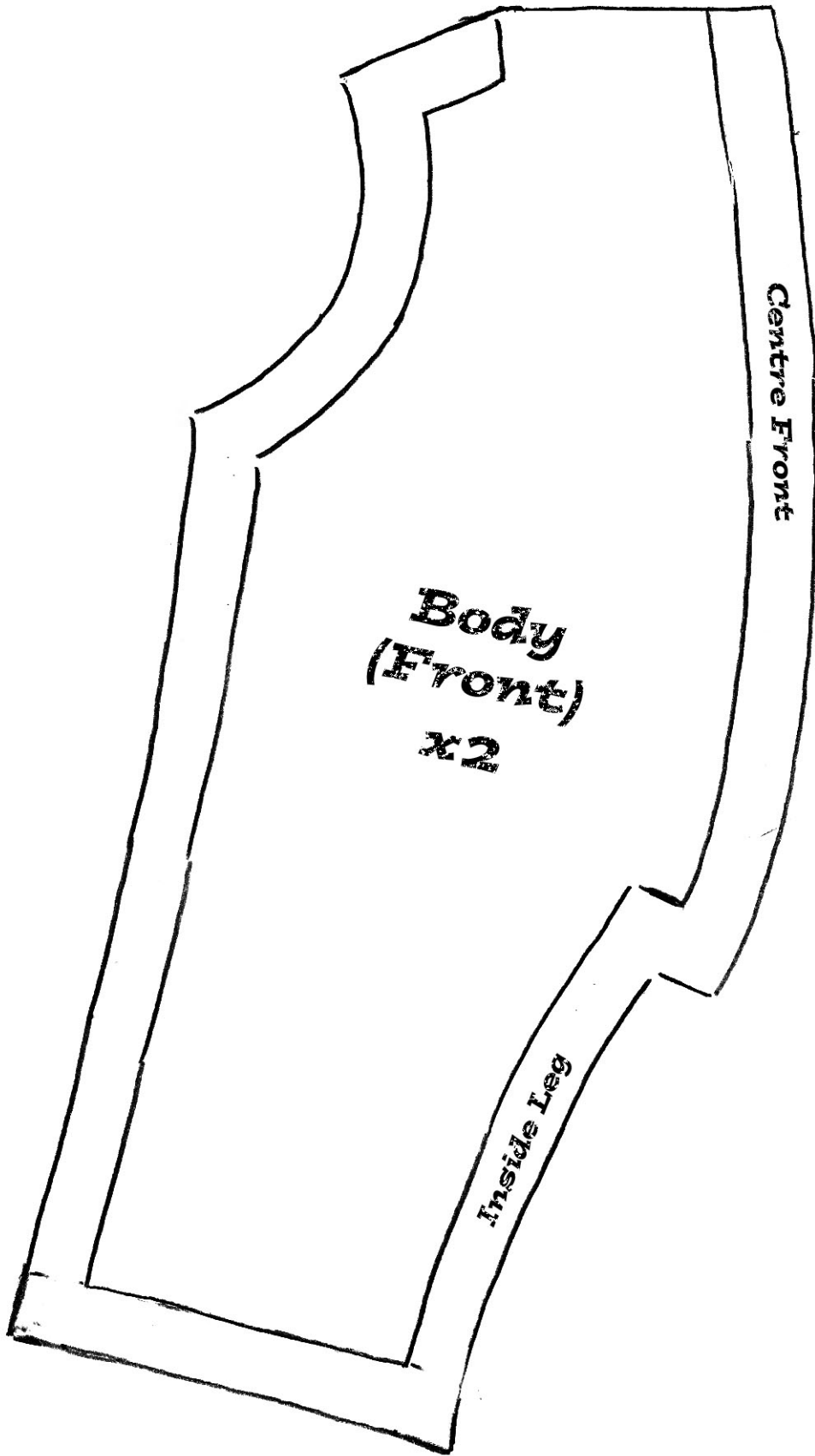
3 cm

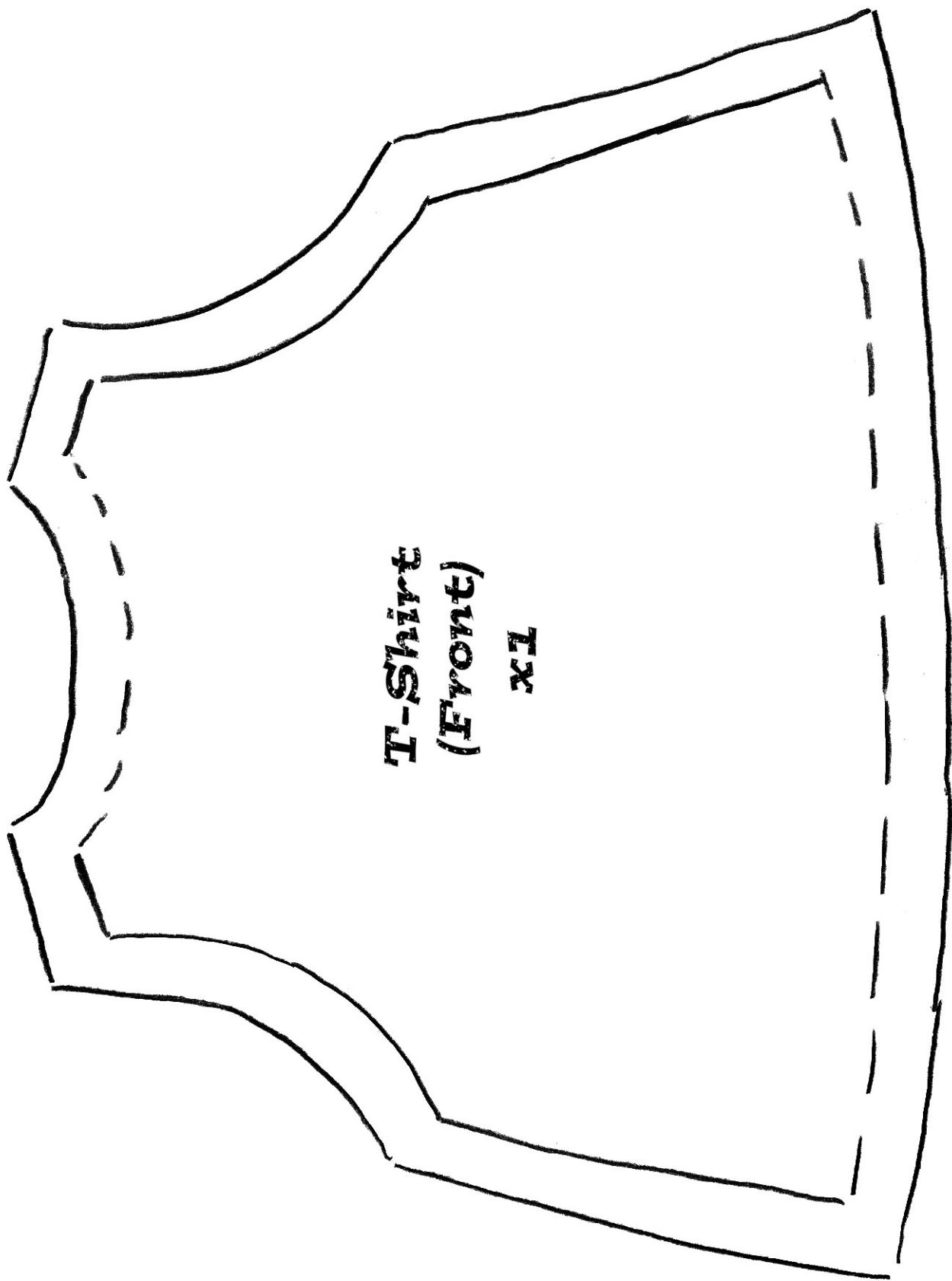
3 cm





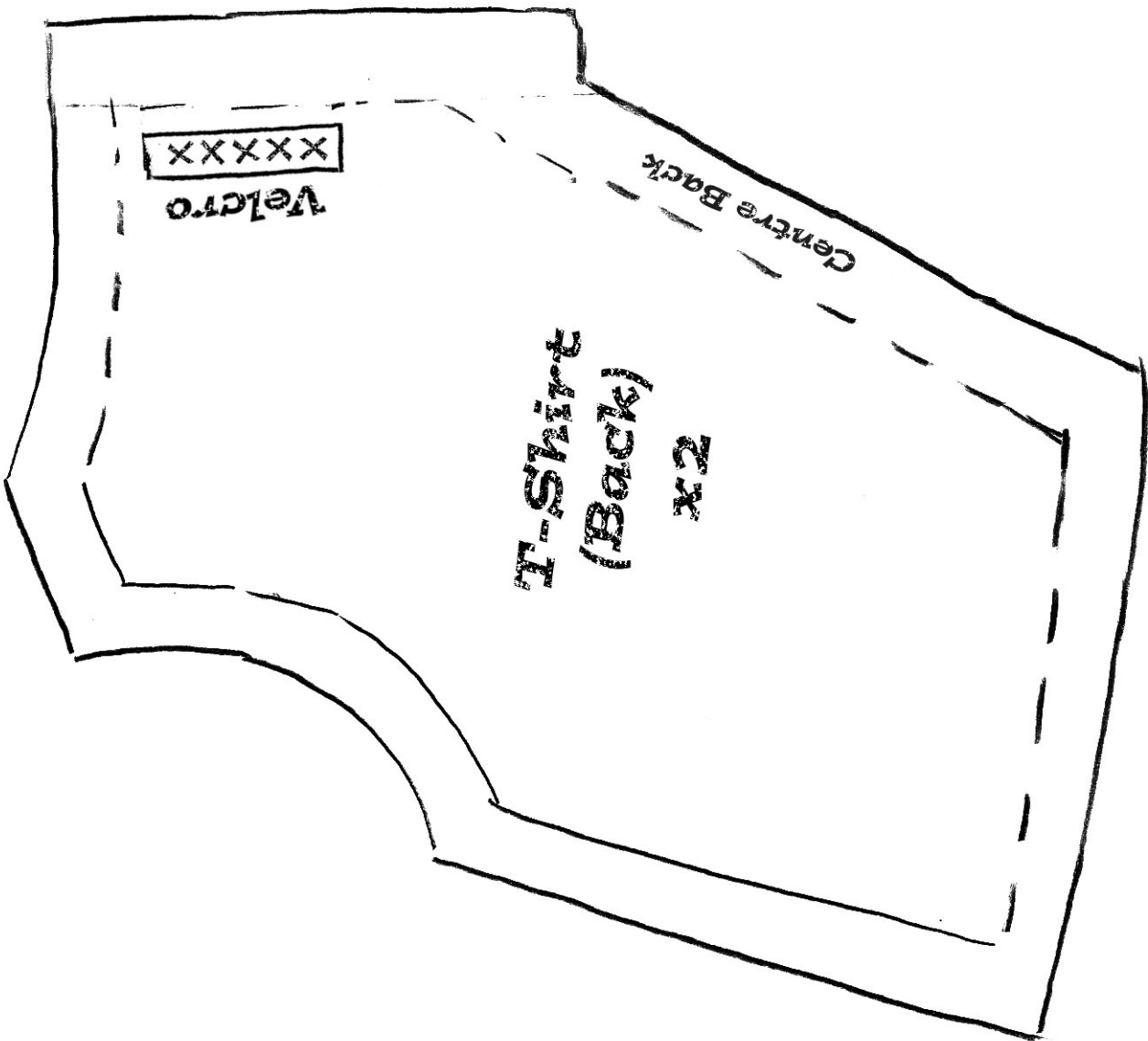
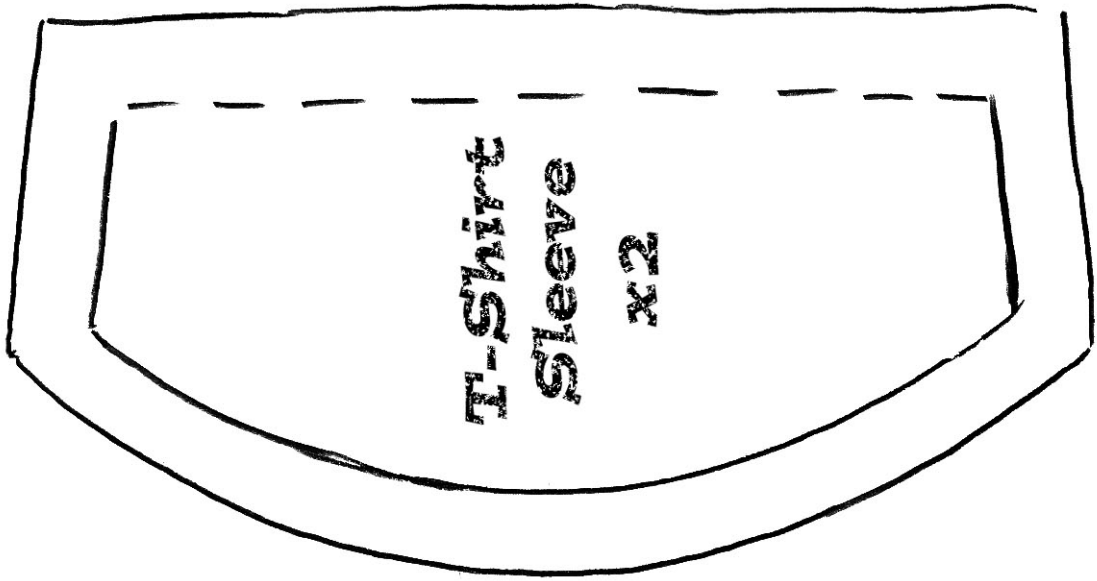


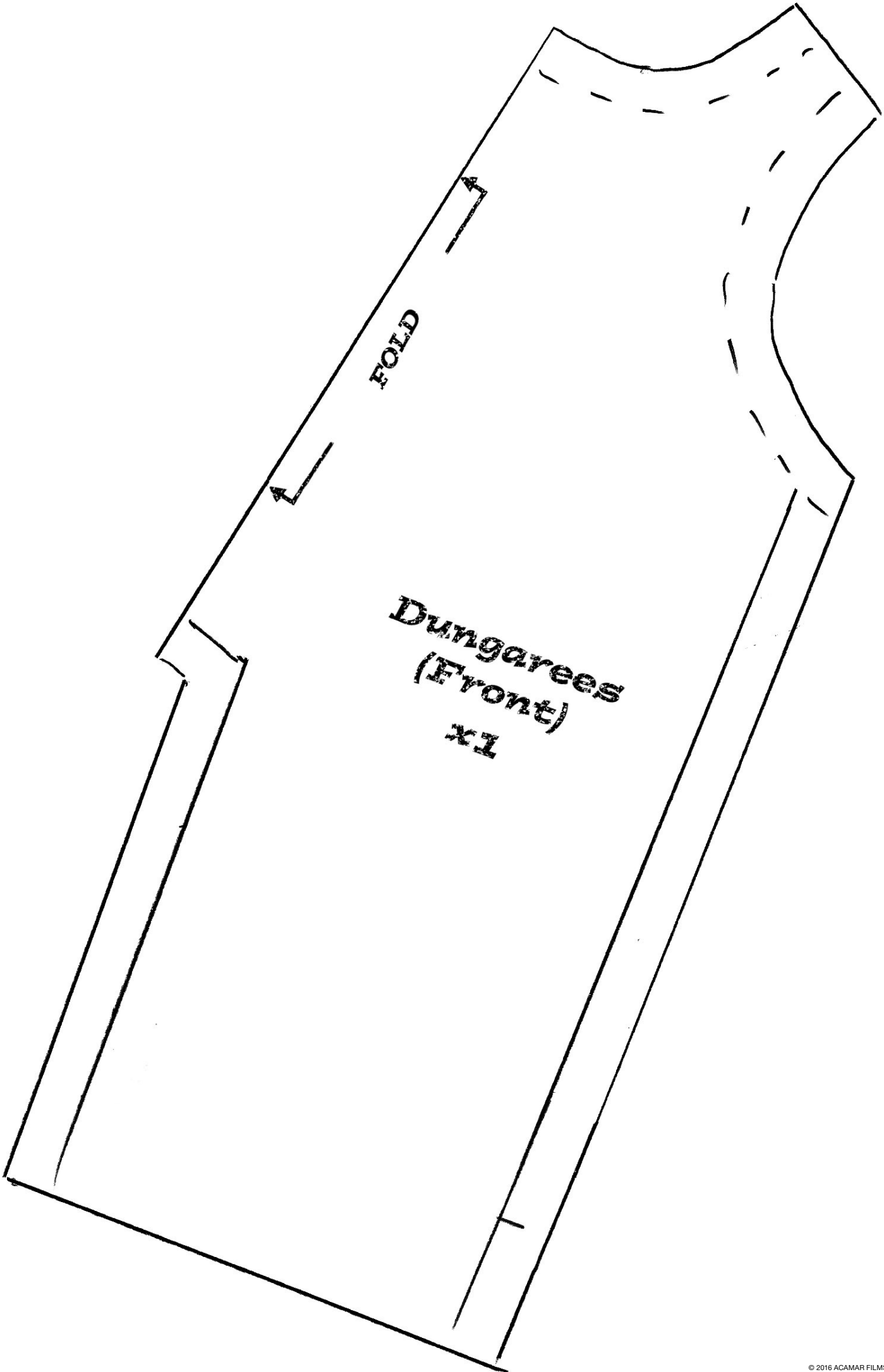




**T-Shirt
(Front)**

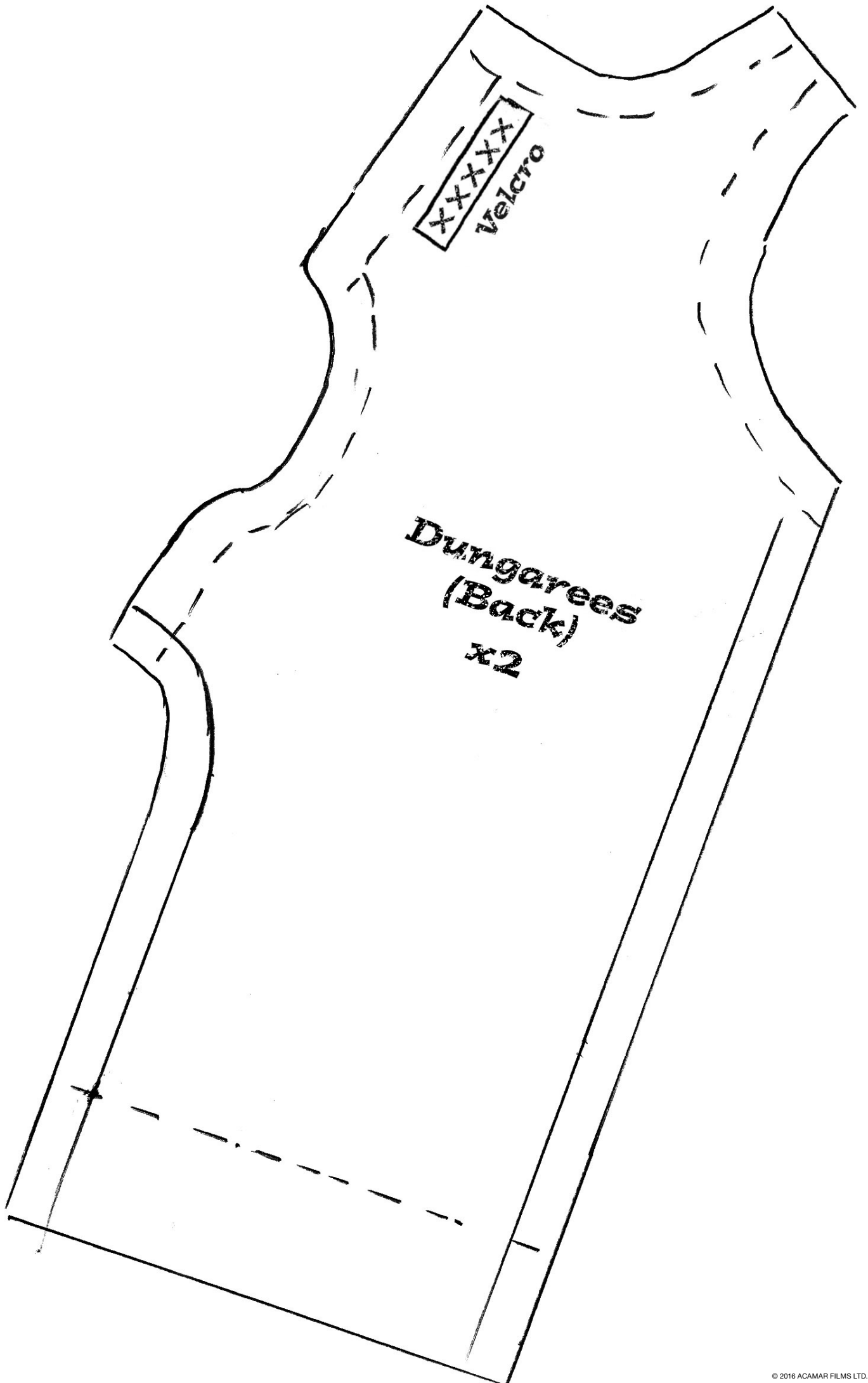
x1





FOLD

Dungarees
(Front)
x1



**Dungarees
(Back)
x2**

**XXXXXX
Velcro**