

BULL SALE 2020



6th Annual Sale | Thursday, March 5th | At the Farm, Medicine Hat, AB



THURSDAY 2020 | 1:00
MARCH 5TH
Highline Angus Farm | Alberta



Welcome to the sixth annual Highline Angus Bull Sale. We would like to sincerely thank everyone who has supported our program in the past and look forward to continuing to work with you in the future.

Again, just like 2018; 2019 has been a challenge for our part of the province. Drought like conditions during the summer, to a cool and damp August, to snow and rain in September left most of us in this wonderful career of agriculture wondering what else could possibly go wrong. The plus side of the wet fall is that we are headed into 2020 in good shape. The calf run this fall was generally steady and strong across the board and had most producers feeling satisfied for their hard work. Other issues in the beef industry came from consumers who are wanting a plant-based version of beef. Myself personally; yes, I have tried beyond meat to gain a consumer's perspective into why they would choose not to eat beef. For those of you who haven't had the pleasure of eating a lump of ultra processed pea protein; you're not missing out on much. Our customers will continue to be our customers.

We love cows. It's obvious in every part of our program and central to our breeding philosophy. We believe cow herds must be functional for the long term. The female is the heart of any herd and the most important factor in a profitable equation. As ranchers, we depend on her longevity, milking ability, and fertility to stay in business – generation after generation. The bulls in this offering are about building a future for you and your family for generations to come. Investing in good genetics is the best way to move your herd forward, and we are proud to be a part of it.

Our goal never changes and we always strive to do better. All the bulls on offer have been raised under ranch conditions, grown on milk and grass, no creep and they have all been treated the same. We feel confident that no matter what your program is, we have a bull that will suit your needs and fit your budget. We are commercial cattlemen too. There is not one bull on offer that we wouldn't use on our own cows. Join us Thursday, March 5, at the new Highline Angus sales facility, come early for lunch and to view the bulls. Better yet give us a call and stop by before the sale, we would love to show you our bull pen. If you can't attend the sale, please feel free to give us a call to discuss your bull needs. We look forward to seeing everyone sale day.

Enjoy the breed and live the dream.
Tyler, Jessica, Weston, Houston & Walker

HIGHLINE ANGUS

Tyler, Jessica, Weston,
Houston & Walker Pasiciel
Box 343, Medicine Hat, AB, T1A 7G1
403-581-7586
highlineangus@hotmail.com
www.highlineangus.com

CASTLEROCK MARKETING

Shane & Tammy Castle
306-741-7485
castlerockmktg@sasktel.net
Devin Warrilow | 780-581-4329
Mark Forsyth | 306-784-7844
www.castlerockmarketing.com



ON OFFER

- 30 Red Angus Yearling Bulls
- 10 Black Angus Yearling Bulls
- 18 Red Angus 2 Year Old Bulls
- 12 Black Angus 2 Year Old Bulls

* ONE DONATION HEIFER, ALL PROCEEDS GOING TO HALO

NEW SALE LOCATION

Highline Angus Sale has moved to the farm: 11502 RANGE ROAD 62 CYPRESS COUNTY AB

DIRECTIONS FROM HIGHWAY #1:

Head 1 mile South of Dunmore to TWP 120. Head West 7 Miles to RR 62. Turn South on RR 62 for 1 mile. Third yard on the west side of the road.

DIRECTIONS FROM HIGHWAY #3:

Head East on TWP 120, 2.5 miles to RR 62. Turn South on RR 62 for 1 mile. Third yard on the West side of the road.

GPS COORDINATES: (LAT) 49.9465939 (LON) -110.7345189

SALE INFO

Sale Day Phone: 403-581-7586 Shane: 306-741-7485 Mark: 306-784-7844

AUCTIONEER:

Gordie Cameron 306-741-7077

SALE STAFF:

Rocky Houff 403-548-9829

Jay Syverson 403-548-1883

SALE INFORMATION:

Sale day weight, performance data, and scrotal measurements will be available sale day.

DELIVERY:

We will deliver your bull free of charge within a 300 mile radius. Delivery on all bulls will start in April. We encourage you to insure your purchases. We will not be responsible for injury or loss to your purchases. We will take \$100 off the purchase price of your bull if the bull is taken sale week.

Can't make the sale?

Sight unseen purchase plan call for details.

Internet Bidding Available

DLMS
www.dlms.ca

For more information Call DLMS Reps:
Melissa McRae 204.573.9903
Mark Shologan 780.699.5082

**View the Sale Live Online
and Sign Up to Place a Bid in
Real Time.**

Videos of
bulls can
be viewed
online at
cattlevids
Or
Castlerock
marketing.
com

**This
is a
Video
Sale**

Donation Heifer

This year we will be offering a heifer.
All proceeds will be going to Halo Air Ambulance.

PROUD TO SUPPORT HALO AIR AMBULANCE | HALORESCUE.CA



Lot **A** RED ANDRAS
fusion R236

• Tattoo: IMP 0236Y • Birth date: September 18 2011 • Reg# 2086661

| | | | |
|-------------|---------------------------------|---|-----------------------------|
| SIRE | MYTTY IN FOCUS | — | S A F FOCUS OF E R |
| | RED ANDRAS IN FOCUS B175 | — | MYTTY COUNTLESS 906 |
| | RED DI ESTONIA 316 | — | RED BUF CRK COUNTERCHF 5107 |
| | | | RED LGR ESTONIA 8001 |
| DAM | RED ANDRAS THUNDER B105 | — | CONNELY THUNDER |
| | RED ANDRAS BELLE B167 | — | RED DI AMY 244 |
| | RED ANDRAS BELLE 416 | — | RED COLLIER TOP FLIGHT |
| | | | RED BUF CRK BELLE 4231 |

BW: WW: ----- BW: -1.3 WW: +32 YW: +64 MILK: +24 TM: +40



Lot **B** RED BIEBER
roosevelt W384

• Tattoo: IMP 384W • Birth date: March 01 2009 • Reg# 1846055

| | | | |
|-------------|-------------------------------------|---|--------------------------|
| SIRE | RED BASIN TRENDSETTER 6074 | — | RED BRYLOR NEW TREND 22D |
| | RED BIEBER ROUGH RIDER 10712 | — | RED BASIN ROSE F521 |
| | RED BIEBER ADELLE 8958 | — | RED BIEBER TITAN 6894 |
| | | | RED BIEBER ADELLE 7226 |
| DAM | C A FUTURE DIRECTION 5321 | — | G A R PRECISION 1680 |
| | RED BIEBER SHEBA 9602 | — | C A MISS POWER FIX 308 |
| | RED BIEBER SHEBA 5537 | — | RED JHE CANYON HAWK 1062 |
| | | | RED BEIBER SHEBA 4404 |

BW: WW: ----- BW: +2.2 WW: +36 YW: +54 MILK: +21 TM: +54



Let **C** RED SIX MILE
sakic 8325

• Tattoo: SIXM 8325 • Birth date: February 26 2006 • Reg# 1332064

| | | | |
|-------------|----------------------------------|---|------------------------|
| SIRE | RED WILDMAN DENALI 19L | — | RED FCC RAMBO 502 |
| | RED SIX MILE AVIATOR 217P | — | RED TOWAW LAKIMA 1S |
| | RED RSL SUE 400F | — | RED FLYING K CHIEF 36Y |
| DAM | RED SIX MILE CUJO 800M | — | RED BJR BRAVEHEART 3H |
| | RED SIX MILE SIERA 257P | — | RED PTTV PRIDE 3'97 |
| | RED BOUNTY B MISS SIERA BAR | — | RED 77 BAR 556E |
| | | | RED RSL MISS SIERA 19A |

BW: 82 WW: 911 YW: 1392 ----- BW: +0.4 WW: +37 YW: +66 MILK: +23 TM: +42



Let **D** RED LWNBRG
automatic 60D

• Tattoo: TED 60D • Birth date: January 22 2016 • Reg# 1904706

| | | | |
|-------------|---------------------------------|---|------------------------------|
| SIRE | RED WHEEL DODGE CITY 61Y | — | RED WHEEL DODGE CITY 3U |
| | RED BRYLOR AUTOMATIC 95B | — | RED WHEEL PRIDE 29N |
| | BLACK BRYLOR LAKME 155Y | — | HF KODIAK 5R |
| DAM | RED BHR GOLDEN BOY 453B | — | RED XXX LAKME 70M |
| | RED TED GOLDEN BOY 119Y | — | RED BIEBER ROUGH RIDER 10712 |
| | RED TED GLACIER MARIAS 101L | — | RED BIEBER SHEBA 9602 |
| | | | RED U2 MAG-LITE 10Z |
| | | | RED HIGHLINE TESS 8Z |

BW: 89 WW: 793 YW: 1359 ----- BW: +3.0 WW: +54 YW: +80 MILK: +20 TM: +47



Let **E** RED COCKBURN
express 517C

• Tattoo: CWJ 517C • Birth date: February 15 2015 • Reg# 1875261

| | | | |
|-------------|--------------------------------------|---|-------------------------------|
| SIRE | RED MLK CRK EXPRESS 9127 | — | RED 5L GRAND EXPRESS 453-5655 |
| | RED JACOBSON FED EXPRESS 3001 | — | RED MLK CRK SHEBA 043 |
| | RED FOREVER QUEEN 950-2657 | — | RED 5L FOREVER GRAND 5834 |
| DAM | RED COCKBURN RIBEYE 308U | — | RED NER COPPER QUEEN 2657 |
| | RED COCKBURN FANNY 515X | — | RED BAR-E-L RIBEYE 103R |
| | RED COCKBURN FANNY 126P | — | RED WILBAR CORA 443P |
| | | | RED T-S PATRIOT 84K |
| | | | RED COCKBURN FANNY 50H |

BW: 82 WW: ----- BW: +0.34 WW: +41 YW: +65 MILK: +19 TM: +40



Let **PA**
A **fortitude 2500**

• Tattoo: IMP 2500Y • Birth date: December 15 2011 • Reg# 1773852

| | | | |
|-------------|---------------------------|---|--------------------------|
| SIRE | RITO 112 OF 2536 RITO 616 | — | RITO 616 OF 4B20 6807 |
| | GAR-EGL PROTEGE | — | G A R PRECISION 2536 |
| | L B 6807 ISABEL 339 | — | D H D TRAVELER 6807 |
| DAM | SYDGEN C C & 7 | — | L B E31 ISABEL 168 |
| | G G CLARA 0171 | — | S A F CONNECTION |
| | G G CLARA 7192 | — | SYDGEN FOREVER LADY 4087 |
| | | | G A R RETAIL PRODUCT |
| | | | G G CLARA 404 |

BW: WW: ----- BW: -1.2 WW: +55 YW: +100 MILK: +17 TM: +45



BW: 86 WW: ----- BW: +2.7 WW: +66 YW: +117 MILK: +33 TM: +66

Lot ^{RB}
F | tour of duty 177

•Tattoo: IMP 177Y •Birth date: January 24 2011 •Reg# 1829420

| | | | |
|------|------------------------------|---|----------------------------|
| SIRE | CONNEALY ONWARD | - | CONNEALY LEAD ON |
| | WERNER WAR PARTY 2417 | | ALTUNE OF CONANGA 6104 |
| | BAAR USA LADY JAYE 489 | | B A R EXT TRAVELER 205 |
| DAM | VERMILION DATELINE 7078 | - | CONNEALY DATELINE |
| | B A LADY 6807 305 | | VERMILION BLACKBIRD 5044 |
| | G D LADY HI FLYER 302 | | HOFF HI FLYER S C 7134 |
| | | | LADY VALEDICTORIAN 3 S A F |



BW: WW: ----- BW: +2.3 WW: +65 YW: +124 MILK: +34 TM: +67

Lot ^{SITZ}
G | upward 307R

•Tattoo: IMP 307R •Birth date: March 12 2005 •Reg# 1385926

| | | | |
|------|---------------------------------|---|---------------------------|
| SIRE | CONNEALY LEAD ON | - | CONNEALY LEADTIME |
| | CONNEALY ONWARD | | ELIGENCE PLUS OF CONANGA |
| | ALTUNE OF CONANGA 6104 | | G A R TRAVELER 1489 |
| DAM | SITZ VALUE 7097 | - | SITZ TRAVELER 6802 |
| | SITZ HENRIETTA PRIDE 81M | | SITZ EISA EVERGREEN 791 |
| | SITZ HENRIETTA PRIDE 1370 | | O C C GREAT PLAINS 943G |
| | | | SITZ HENRIETTA PRIDE 2155 |



BW: 94 WW: 704 YW: 1545 ----- BW: +1.5 WW: +66 YW: +117 MILK: +23 TM: +56

Lot ^{RED BENCHMARK}
H | momentum 31'15

•Tattoo: BFR 31C •Birth date: February 16 2015 •Reg# 1834065

| | | | |
|------|---------------------------------------|---|--------------------------------|
| SIRE | RED 3JG-MEW GRIDIRON 806U | - | RED PIE GRIDMASTER 589 |
| | RED LSF MEW GAME CHANGER 1613Y | | RED LSF COVER GIRL LA414 P4046 |
| | RED MEW ELIZABETH 710T | | RED LSF CANYON CLASSIC 3037N |
| DAM | RED 5L TRAVLIN EXP 1892-6295 | - | RED 5L NORSEMAN EXPRESS |
| | RED QUEEN OF BENCHMARK 984 | | 5L SUNSHINE 699-1892 |
| | RED QUEEN OF BENCHMARK 67 | | RED BCR BRANDED BEEF 1P |
| | | | RED MEM HOLLY 22M |



BW: 92 WW: 896 YW: 1614 ----- BW: +1.6 WW: +65 YW: +106 MILK: +27 TM: +60

Lot ^{U2}
H | trademark 22D

•Tattoo: DUA 22D •Birth date: January 04 2016 •Reg# 1952265

| | | | |
|------|--------------------------|---|-----------------------------|
| SIRE | S A V ELIMINATOR 9105 | - | RITO 707 OF IDEAL 3407 7075 |
| | JL SIGNATURE 4106 | | S A V ABIGALE 5646 |
| | JL CASSIE 8262 | | S A V FOUR SEASONS 5231 |
| DAM | TOKACH UPDATE 9009 | - | SITZ UPWARD 307R |
| | SANE UPD. PRIDE 115Z | | TOKACH BLACK LADY 4100 |
| | SANE 416 PRIDE 120W | | TC RITO 416 |
| | | | SANE 319P PRIDE 316S |



Lot **1** | RED HIGHLINE
fusion 4G

• Tattoo: TP 4G • Birth date: January 01 2019 • Reg# 2086657

SIRE

RED ANDRAS IN FOCUS B175
RED ANDRAS FUSION R236
RED ANDRAS BELLE B167

MYTTY IN FOCUS
RED DI ESTONIA 316
RED ANDRAS THUNDER B105
RED ANDRAS BELLE 416

DAM

RED SIX MILE SAKIC 832S
RED HIGHLINE GILDA 99E
RED HIGHLINE GILDA 78B

RED SIX MILE AVIATOR 217P
RED SIX MILE SIERA 257P
RED BLAIR'S TALLADEGA 218W
RED GET-A-LONG GILDA 809

BW: 72 WW: 811 YW: 1227 ----- BW: -0.9 WW: +33 YW: +60 MILK: +24 TM: +41

Lot **2** | RED HIGHLINE
fusion 8G

• Tattoo: TP 8G • Birth date: January 02 2019 • Reg# 2086661

SIRE

RED ANDRAS IN FOCUS B175
RED ANDRAS FUSION R236
RED ANDRAS BELLE B167

MYTTY IN FOCUS
RED DI ESTONIA 316
RED ANDRAS THUNDER B105
RED ANDRAS BELLE 416

DAM

RED BIEBER ROOSEVELT W384
RED HIGHLINE TESS 73E
RED HIGHLINE TESS 11B

RED BIEBER ROUGH RIDER 10712
RED BIEBER SHEBA 9602
RED U2 MAG-LITE 10Z
RED HIGHLINE TESS 8Z

BW: 75 WW: 707 YW: 1033 ----- BW: +0.4 WW: +37 YW: +66 MILK: +23 TM: +42

Lot **3** | RED HIGHLINE
fusion 13G

• Tattoo: TP 13G • Birth date: January 02 2019 • Reg# 2086666

SIRE

RED ANDRAS IN FOCUS B175
RED ANDRAS FUSION R236
RED ANDRAS BELLE B167

MYTTY IN FOCUS
RED DI ESTONIA 316
RED ANDRAS THUNDER B105
RED ANDRAS BELLE 416

DAM

RED LJC MISSION STATEMENT P27
RED HIGHLINE BAYBERRY 108E
RED LLB BAYBERRY 644Z

RED LJC LANCER 806
RED LJC HANNAH 106
RED BLAIR'S TALLADEGA 218W
RED LLB BAYBERRY 457U

BW: 76 WW: 724 YW: 1103 ----- BW: -0.3 WW: +33 YW: +64 MILK: +23 TM: +40



Lot **4** RED HIGHLINE
fusion 8G

•Tattoo: TP 8G •Birth date: January 02 2019 •Reg# 2086661

| | | | |
|-------------|-------------------------------|---|------------------------------|
| SIRE | RED ANDRAS IN FOCUS B175 | — | MYTTY IN FOCUS |
| | RED ANDRAS FUSION R236 | | RED DI ESTONIA 316 |
| | RED ANDRAS BELLE B167 | — | RED ANDRAS THUNDER B105 |
| | | | RED ANDRAS BELLE 416 |
| DAM | RED BIEBER ROOSEVELT W384 | — | RED BIEBER ROUGH RIDER 10712 |
| | RED HIGHLINE TESS 73E | | RED BIEBER SHEBA 9602 |
| | RED HIGHLINE TESS 11B | — | RED U2 MAG-LITE 10Z |
| | | | RED HIGHLINE TESS 8Z |

BW: 75 WW: 707 YW: 1182 ----- BW: +0.4 WW: +37 YW: +66 MILK: +23 TM: +42



Lot **5** RED HIGHLINE
fusion 13G

•Tattoo: TP 13G •Birth date: January 02 2019 •Reg# 2086666

| | | | |
|-------------|-----------------------------------|---|----------------------------|
| SIRE | RED ANDRAS IN FOCUS B175 | — | MYTTY IN FOCUS |
| | RED ANDRAS FUSION R236 | | RED DI ESTONIA 316 |
| | RED ANDRAS BELLE B167 | — | RED ANDRAS THUNDER B105 |
| | | | RED ANDRAS BELLE 416 |
| DAM | RED LJC MISSION STATEMENT P27 | — | RED LJC LANCER 806 |
| | RED HIGHLINE BAYBERRY 108E | | RED LJC HANNAH 106 |
| | RED LLB BAYBERRY 644Z | — | RED BLAIR'S TALLADEGA 218W |
| | | | RED LLB BAYBERRY 457U |

BW: 76 WW: 724 YW: 1179 ----- BW: -0.3 WW: +33 YW: +64 MILK: +23 TM: +40



Lot **6** RED HIGHLINE
fusion 24G

•Tattoo: TP 24G •Birth date: January 05 2019 •Reg# 2086676

| | | | |
|-------------|---------------------------------|---|-------------------------|
| SIRE | RED ANDRAS IN FOCUS B175 | — | MYTTY IN FOCUS |
| | RED ANDRAS FUSION R236 | | RED DI ESTONIA 316 |
| | RED ANDRAS BELLE B167 | — | RED ANDRAS THUNDER B105 |
| | | | RED ANDRAS BELLE 416 |
| DAM | RED U-2 AUTHENTIC 166C | — | RED U-2 AUTHENTIC 139A |
| | RED HIGHLINE BIRDIE 106E | | RED U-2 ANEXA 232A |
| | RED HIGHLINE BIRDIE 61C | — | RED U2 MAG-LITE 10Z |
| | | | RED HIGHLINE BIRDIE 37A |

BW: 84 WW: 791 YW: 1233 ----- BW: +0.9 WW: +43 YW: +76 MILK: +22 TM: +44



Lot **7** | RED HIGHLINE
fusion 28G

• Tattoo: TP 28G • Birth date: January 04 2019 • Reg# 2128341

SIRE

RED ANDRAS IN FOCUS B175
RED ANDRAS FUSION R236
RED ANDRAS BELLE B167

MYTTY IN FOCUS
RED DI ESTONIA 316
RED ANDRAS THUNDER B105
RED ANDRAS BELLE 416

DAM

RED BENCHMARK MOMENTUM 31'15
RED HIGHLINE BLACKWOOD 163E
RED HIGHLINE BLACKWOOD 54B

RED LSF MEW GAME CHANGER 1613Y
RED QUEEN OF BENCHMARK 984
RED BLAIR'S TALLADEGA 218W
RED LLB BLACKWOOD 456R

BW: 83 WW: 830 YW: 1122 ----- BW: +0.3 WW: +39 YW: +75 MILK: +24 TM: +43

Lot **8** | RED HIGHLINE
fusion 37G

• Tattoo: TP 37G • Birth date: January 07 2019 • Reg# 2089012

SIRE

RED ANDRAS IN FOCUS B175
RED ANDRAS FUSION R236
RED ANDRAS BELLE B167

MYTTY IN FOCUS
RED DI ESTONIA 316
RED ANDRAS THUNDER B105
RED ANDRAS BELLE 416

DAM

RED BIEBER ROOSEVELT W384
RED HIGHLINE TESS 73E
RED HIGHLINE TESS 11B

RED BIEBER ROUGH RIDER 10712
RED BIEBER SHEBA 9602
RED U2 MAG-LITE 10Z
RED HIGHLINE TESS 8Z

BW: 76 WW: 710 YW: 1100 ----- BW: +0.1 WW: +39 YW: +74 MILK: +24 TM: +44

Lot **9** | RED HIGHLINE
fusion 43G

• Tattoo: TP 43G • Birth date: January 07 2019 • Reg# 2089026

SIRE

RED ANDRAS IN FOCUS B175
RED ANDRAS FUSION R236
RED ANDRAS BELLE B167

MYTTY IN FOCUS
RED DI ESTONIA 316
RED ANDRAS THUNDER B105
RED ANDRAS BELLE 416

DAM

RED U2 MAG-LITE 10Z
RED HIGHLINE PRINCESS 6C
RED HIGHLINE PRINCESS 21A

RED HOWE MAGNUM 169W
RED U-2 HI DEE HO 1459P
RED GEIS KNIGHT HAWK 72'09
RED GEIS PRINCESS 976'09

BW: 81 WW: 628 YW: 1005 ----- BW: -0.3 WW: +25 YW: +49 MILK: +22 TM: +35



Lot **RED HIGHLINE**
10 fusion 40G

•Tattoo: TP 40G •Birth date: January 07 2019 •Reg# 2089017

SIRE
RED ANDRAS IN FOCUS B175
RED ANDRAS FUSION R236
RED ANDRAS BELLE B167

— MYTTY IN FOCUS
RED DI ESTONIA 316
— RED ANDRAS THUNDER B105
RED ANDRAS BELLE 416

DAM
RED BENCHMARK MOMENTUM 31'15
RED HIGHLINE BELEVATE 158E
RED GEIS BELEVATE 59'12

— RED LSF MEW GAME CHANGER 1613Y
RED QUEEN OF BENCHMARK 984
— RED PREMIER PATRIOT 16
RED GEIS BELEVATE 247'08

BW: 77 WW: 702 YW: 1209 ----- BW: +0.1 WW: +41 YW: +72 MILK: +24 TM: +45



Lot **RED HIGHLINE**
11 fusion 48G

•Tattoo: TP 48G •Birth date: January 08 2019 •Reg# 2089071

SIRE
RED ANDRAS IN FOCUS B175
RED ANDRAS FUSION R236
RED ANDRAS BELLE B167

— MYTTY IN FOCUS
RED DI ESTONIA 316
— RED ANDRAS THUNDER B105
RED ANDRAS BELLE 416

DAM
RED LJC MISSION STATEMENT P27
RED HIGHLINE YUKON 23D
RED LLB YUKON 11R

— RED LJC LANCER 806
RED LJC HANNAH 106
— RED BRYLOR SDL YUKON 163N
RED GETALONG ROBERTA LEE 5118

BW: 80 WW: 686 YW: 1063 ----- BW: -0.9 WW: +33 YW: +61 MILK: +23 TM: +40

New
**for
this
Year**

Sale will be a Video

**No bulls
enter the ring**

**"We encourage you to come
early and mark your book
well."**

Lot **RED HIGHLINE**
12 fusion 69G

•Tattoo: TP 69G •Birth date: January 15 2019 •Reg# 2089092

SIRE
RED ANDRAS IN FOCUS B175
RED ANDRAS FUSION R236
RED ANDRAS BELLE B167

— MYTTY IN FOCUS
RED DI ESTONIA 316
— RED ANDRAS THUNDER B105
RED ANDRAS BELLE 416

DAM
RED BLAIR'S TALLADEGA 218W
RED HIGHLINE MONIQUE 82C
RED DIAMOND MONIQUE 70'02

— RED FINE LINE MULBERRY 26P
RED JCC LASS 41N
— RED BASIN SENSATION 702E
RED TOWAW MONIQUE 2K

BW: 80 WW: 672 YW: 1036 ----- BW: -1.5 WW: +20 YW: +42 MILK: +25 TM: +35



Let **RED HIGHLINE**
13 fusion 94G

•Tattoo: TP 94G •Birth date: January 21 2019 •Reg# 2089121

SIRE

RED ANDRAS IN FOCUS B175
RED ANDRAS FUSION R236
 RED ANDRAS BELLE B167

— MYTTY IN FOCUS
 RED DI ESTONIA 316
 — RED ANDRAS THUNDER B105
 RED ANDRAS BELLE 416

DAM

RED BLAIR'S TALLADEGA 218W
RED HIGHLINE HEATHER 114D
 RED HIGHLINE HEATHER 5X

— RED FINE LINE MULBERRY 26P
 RED JCC LASS 41N
 — RED SHODEREE DATA 73U
 RED SHODEREE HEATHER 65N

BW: 83 WW: 785 YW: 1143 ----- BW: -0.1 WW: +31 YW: +61 MILK: +24 TM: +40



Let **RED HIGHLINE**
14 fusion 108G

•Tattoo: TP 108G •Birth date: January 25 2019 •Reg# 2089255

SIRE

RED ANDRAS IN FOCUS B175
RED ANDRAS FUSION R236
 RED ANDRAS BELLE B167

— MYTTY IN FOCUS
 RED DI ESTONIA 316
 — RED ANDRAS THUNDER B105
 RED ANDRAS BELLE 416

DAM

RED FEDDES BIG SKY R9
RED HIGHLINE ZIKA 15D
 RED HIGHLINE ZIKA 57B

— RED BIEBER MAKE MIMI 7249
 RED FEDDES LAKINA 310
 — RED U-2 MISSION 92Y
 RED LLB ZIKA 548Y

BW: 81 WW: 710 YW: 1101 ----- BW: +0.0 WW: +36 YW: +70 MILK: +21 TM: +39





Lot **RED HIGHLINE**
15 **rolex 82G**

•Tattoo: TP 82G •Birth date: January 18 2019 •Reg# 2089105

SIRE RED BIEBER ROUGH RIDER 10712 — RED BASIN TRENDSETTER 6074
RED BIEBER ROOSEVELT W384 — RED BIEBER ADELLE 8958
RED BIEBER SHEBA 9602 — C A FUTURE DIRECTION 5321
RED BIEBER SHEBA 5537

DAM RED BLAIR'S TALLADEGA 218W — RED FINE LINE MULBERRY 26P
RED HIGHLINE BEULA 124C — RED JCC LASS 41N
RED OPEN AV BEULA 749W — RED CFRA MAKE MY DAY 009
RED OPEN AV BEULA 349T

BW: 87 WW: 768 YW: 1211 ----- BW: +1.6 WW: +37 YW: +59 MILK: +25 TM: +44



Lot **RED HIGHLINE**
16 **rolex 84G**

•Tattoo: TP 84G •Birth date: January 18 2019 •Reg# 2089107

SIRE RED BIEBER ROUGH RIDER 10712 — RED BASIN TRENDSETTER 6074
RED BIEBER ROOSEVELT W384 — RED BIEBER ADELLE 8958
RED BIEBER SHEBA 9602 — C A FUTURE DIRECTION 5321
RED BIEBER SHEBA 5537

DAM RED FEDDES BIG SKY R9 — RED BIEBER MAKE MIMI 7249
RED HIGHLINE ERICA 21D — RED FEDDES LAKINA 310
RED HIGHLINE ERICA 10B — RED U2 MAG-LITE 10Z
RED LLB TROJAN ERICA 157Z

BW: 88 WW: 711 YW: 1062 ----- BW: +1.8 WW: +38 YW: +58 MILK: +23 TM: +42

Lot **RED HIGHLINE**
17 **rolex 25G**

•Tattoo: TP 25G •Birth date: January 05 2019 •Reg# 2086677

SIRE RED BIEBER ROUGH RIDER 10712 — RED BASIN TRENDSETTER 6074
RED BIEBER ROOSEVELT W384 — RED BIEBER ADELLE 8958
RED BIEBER SHEBA 9602 — C A FUTURE DIRECTION 5321
RED BIEBER SHEBA 5537

DAM RED U-2 MISSION 92Y — RED U2 MISSION 61W
RED HIGHLINE BELA 131C — RED U-2 STORMY 1303N
RED HIGHLINE BELA 2Y — RED FINE LINE MULBERRY 26P
RED SOUTHLAND BELA 145U

BW: 82 WW: 632 YW: 1022 ----- BW: +1.8 WW: +29 YW: +48 MILK: +16 TM: +31

Lot **RED HIGHLINE**
18 **rolex 54G**

•Tattoo: TP 54G •Birth date: January 10 2019 •Reg# 2089077

SIRE RED BIEBER ROUGH RIDER 10712 — RED BASIN TRENDSETTER 6074
RED BIEBER ROOSEVELT W384 — RED BIEBER ADELLE 8958
RED BIEBER SHEBA 9602 — C A FUTURE DIRECTION 5321
RED BIEBER SHEBA 5537

DAM RED BLAIR'S TALLADEGA 218W — RED FINE LINE MULBERRY 26P
RED HIGHLINE GOLDIE 93C — RED JCC LASS 41N
RED LLB GOLDIE 032R — RED BRYLOR SDL YUKON 163N
RED TOP ELITE GOLDIE 41D

BW: 85 WW: 609 YW: 1012 ----- BW: +0.4 WW: +25 YW: +44 MILK: +21 TM: +34

Let
19 RED HIGHLINE
rolex 64G

• Tattoo: TP 64G • Birth date: January 13 2019 • Reg# 2089087

| | | | | | | | |
|------|----------------------------------|---|----------------------------|-----|--------------------------------|---|-----------------------------|
| SIRE | RED BIEBER ROUGH RIDER 10712 | - | RED BASIN TRENDSETTER 6074 | DAM | RED BAR-E-L LEAD TIME 45Z | - | RED NORTHLINE FAT TONY 605U |
| | RED BIEBER ROOSEVELT W384 | | RED BIEBER ADELLE 8958 | | RED HIGHLINE MARCIE 41B | | RED BAR-E-L DYNOFIRE 72X |
| | RED BIEBER SHEBA 9602 | | C A FUTURE DIRECTION 5321 | | RED SOO LINE MARCIE 0197 | | RED SOO LINE MOMENTUM 7051 |
| | | | RED BIEBER SHEBA 5537 | | | | RED BAR-E-L MARCIE 50N |

BW: 83 WW: 712 YW: 1115 ----- BW: +1.9 WW: +28 YW: +46 MILK: +22 TM: +36

Let
20 RED HIGHLINE
rolex 77G

• Tattoo: TP 77G • Birth date: January 17 2019 • Reg# 2089100

| | | | | | | | |
|------|----------------------------------|---|----------------------------|-----|----------------------------------|---|----------------------------|
| SIRE | RED BIEBER ROUGH RIDER 10712 | - | RED BASIN TRENDSETTER 6074 | DAM | RED HIGHLINE MULBERRY 1Y | - | RED FINE LINE MULBERRY 26P |
| | RED BIEBER ROOSEVELT W384 | | RED BIEBER ADELLE 8958 | | RED HIGHLINE SHAWNEE 145C | | RED SHODEREE LADY 196S |
| | RED BIEBER SHEBA 9602 | | C A FUTURE DIRECTION 5321 | | RED LLB MISS SHAWNEE 26W | | RED TER-RON CALLOWAY 15R |
| | | | RED BIEBER SHEBA 5537 | | | | RED LAZY M ICE 5J |

BW: 85 WW: 668 YW: 1020 ----- BW: +1.3 WW: +32 YW: +50 MILK: +19 TM: +35

Let
21 RED HIGHLINE
rolex 87G

• Tattoo: TP 87G • Birth date: January 19 2019 • Reg# 2089111

| | | | | | | | |
|------|----------------------------------|---|----------------------------|-----|------------------------------|---|--------------------------------|
| SIRE | RED BIEBER ROUGH RIDER 10712 | - | RED BASIN TRENDSETTER 6074 | DAM | RED U2 MAG-LITE 10Z | - | RED HOWE MAGNUM 169W |
| | RED BIEBER ROOSEVELT W384 | | RED BIEBER ADELLE 8958 | | RED HIGHLINE BELA 28B | | RED U-2 HI DEE HO 1459P |
| | RED BIEBER SHEBA 9602 | | C A FUTURE DIRECTION 5321 | | RED HIGHLINE BELA 21Z | | RED BENCHMARK GRAND CANYON 611 |
| | | | RED BIEBER SHEBA 5537 | | | | RED HIGHLINE BELA 2X |

BW: 87 WW: 640 YW: 1069 ----- BW: +4.0 WW: +36 YW: +62 MILK: +23 TM: +41

Let
22 RED HIGHLINE
rolex 96G

• Tattoo: TP 96G • Birth date: January 21 2019 • Reg# 2089123

| | | | | | | | |
|------|----------------------------------|---|----------------------------|-----|---------------------------------|---|---------------------------|
| SIRE | RED BIEBER ROUGH RIDER 10712 | - | RED BASIN TRENDSETTER 6074 | DAM | RED SIX MILE SAKIC 832S | - | RED SIX MILE AVIATOR 217P |
| | RED BIEBER ROOSEVELT W384 | | RED BIEBER ADELLE 8958 | | RED HIGHLINE HEATHER 16C | | RED SIX MILE SIERA 257P |
| | RED BIEBER SHEBA 9602 | | C A FUTURE DIRECTION 5321 | | RED SHODEREE HEATHER 65N | | RED GEFB BEEFMAKER 2101 |
| | | | RED BIEBER SHEBA 5537 | | | | RED RAFTER IR HEATHER 46K |

BW: 84 WW: 687 YW: 1012 ----- BW: +1.2 WW: +37 YW: +58 MILK: +24 TM: +43

Let
23 RED HIGHLINE
rolex 100G

• Tattoo: TP 100G • Birth date: January 23 2019 • Reg# 2089240

| | | | | | | | |
|------|----------------------------------|---|----------------------------|-----|------------------------------|---|---------------------------|
| SIRE | RED BIEBER ROUGH RIDER 10712 | - | RED BASIN TRENDSETTER 6074 | DAM | RED SIX MILE SAKIC 832S | - | RED SIX MILE AVIATOR 217P |
| | RED BIEBER ROOSEVELT W384 | | RED BIEBER ADELLE 8958 | | RED HIGHLINE TESS 16A | | RED SIX MILE SIERA 257P |
| | RED BIEBER SHEBA 9602 | | C A FUTURE DIRECTION 5321 | | RED SHODEREE TESS 40U | | RED BASIN HOBBO 79E |
| | | | RED BIEBER SHEBA 5537 | | | | RED SHODEREE TESS 93S |

BW: 86 WW: 663 YW: 1008 ----- BW: +1.9 WW: +40 YW: +63 MILK: +23 TM: +43



Lot **RED HIGHLINE**
24 sakic 58G

•Tattoo: TP 58G •Birth date: January 11 2019 •Reg# 2089081

- | | | | |
|-------------|--------------------------------|---|-----------------------------|
| SIRE | RED SIX MILE AVIATOR 217P | — | RED WILDMAN DENALI 19L |
| | RED SIX MILE SAKIC 832S | | RED RSL SUE 400F |
| | RED SIX MILE SIERA 257P | — | RED SIX MILE CUJO 800M |
| | | | RED BOUNTY B MISS SIERA BAR |
| DAM | RED U-2 MISSION 92Y | — | RED U2 MISSION 61W |
| | RED HIGHLINE TESS 166C | | RED U-2 STORMY 1303N |
| | RED SHODEREE TESS 145P | — | RED FLYING K DYNAMITE 66L |
| | | | RED SHODEREE TESS 107J |

BW: 94 WW: 767 YW: 1209 ----- BW: +2.9 WW: +43 YW: +67 MILK: +21 TM: +43



Lot **RED HIGHLINE**
25 sakic 61G

•Tattoo: TP 61G •Birth date: January 12 2019 •Reg# 2089084

- | | | | |
|-------------|---------------------------------|---|-----------------------------|
| SIRE | RED SIX MILE AVIATOR 217P | — | RED WILDMAN DENALI 19L |
| | RED SIX MILE SAKIC 832S | | RED RSL SUE 400F |
| | RED SIX MILE SIERA 257P | — | RED SIX MILE CUJO 800M |
| | | | RED BOUNTY B MISS SIERA BAR |
| DAM | RED FEDDES BIG SKY R9 | — | RED BIEBER MAKE MIMI 7249 |
| | RED HIGHLINE COUNTESS 2D | | RED FEDDES LAKINA 310 |
| | RED HIGHLINE COUNTESS 59B | — | RED BAR-E-L LEAD TIME 45Z |
| | | | RED LLB COUNTESS 805Y |

BW: 83 WW: 730 YW: 1081 ----- BW: +0.4 WW: +39 YW: +59 MILK: +23 TM: +43

Lot **RED HIGHLINE TWIN**
26 automatic 111G

•Tattoo: TP 111G •Birth date: January 27 2019 •Reg# 2089389

- | | | | | | | | |
|-------------|---------------------------------|---|-----------------------------|------------|--------------------------------|--------------------------|------------------------|
| SIRE | RED BRYLOR AUTOMATIC 95B | — | RED WHEEL DODGE CITY 61Y | DAM | RED LJC MISSION STATEMENT P27 | — | RED LJC LANCER 806 |
| | RED LWNBRG AUTOMATIC 60D | | BLACK BRYLOR LAKME 155Y | | RED HIGHLINE THELMA 43B | | RED LJC HANNAH 106 |
| | RED TED GOLDEN BOY 119Y | — | RED BHR GOLDEN BOY 453B | | RED SHODEREE THELMA 105S | — | RED SHODEREE STORM 96P |
| | | | RED TED GLACIER MARIAS 101L | | | RED SHODEREE THELMA 136L | |

BW: 82 WW: 696 YW: 1021 ----- BW: +2.1 WW: +50 YW: +78 MILK: +21 TM: +46

Lot **RED HIGHLINE TWIN**
27 automatic 112G

•Tattoo: TP 112G •Birth date: January 27 2019 •Reg# 2089392

- | | | | | | | | |
|-------------|---------------------------------|---|-----------------------------|------------|--------------------------------|--------------------------|------------------------|
| SIRE | RED BRYLOR AUTOMATIC 95B | — | RED WHEEL DODGE CITY 61Y | DAM | RED LJC MISSION STATEMENT P27 | — | RED LJC LANCER 806 |
| | RED LWNBRG AUTOMATIC 60D | | BLACK BRYLOR LAKME 155Y | | RED HIGHLINE THELMA 43B | | RED LJC HANNAH 106 |
| | RED TED GOLDEN BOY 119Y | — | RED BHR GOLDEN BOY 453B | | RED SHODEREE THELMA 105S | — | RED SHODEREE STORM 96P |
| | | | RED TED GLACIER MARIAS 101L | | | RED SHODEREE THELMA 136L | |

BW: 79 WW: 687 YW: 1155 ----- BW: +2.1 WW: +50 YW: +78 MILK: +21 TM: +46



Lot **RED HIGHLINE**
28 automatic 147G

•Tattoo: TP 147G •Birth date: February 11 2019 •Reg# 2090093

SIRE

RED BRYLOR AUTOMATIC 95B
RED LWNBRG AUTOMATIC 60D
 RED TED GOLDEN BOY 119Y

RED WHEEL DODGE CITY 61Y
 BLACK BRYLOR LAKME 155Y
 RED BHR GOLDEN BOY 453B
 RED TED GLACIER MARIAS 101L

DAM

RED GLESBAR EXCEL 11R
RED GEIS FIREFLY 46'11
 RED GEIS FIREFLY 149'08

RED GLESBAR EXPANSION 81K
 RED GEIS SYRINGA 160'91
 RED FINE LINE REWARD 6R
 RED GEIS FIREFLY 206'05

BW: 92 WW: 780 YW: 1183 ----- BW: +3.4 WW: +44 YW: +67 MILK: +20 TM: +42



Lot **RED HIGHLINE**
29 transition 20G

•Tattoo: TP 20G •Birth date: January 04 2019 •Reg# 2086673

SIRE

RED LSF MEW GAME CHANGER 1613Y
RED BENCHMARK TRANSITION 10'14
 RED BENCHMARK LANA 60'11

RED 3JG-MEW GRIDIRON 806U
 RED MEW ELIZABETH 710T
 RED BENCHMARK SURESHOT 8119
 RED BENCHMARK LANA 756

DAM

RED ANDRAS FUSION R236
RED HIGHLINE DELIGHT 10E
 RED HIGHLINE DELIGHT 11C

RED ANDRAS IN FOCUS B175
 RED ANDRAS BELLE B167
 RED SIX MILE SAKIC 832S
 RED TG DELIGHT 261Y

BW: 75 WW: 753 YW: 1169 ----- BW: +1.2 WW: +44 YW: +82 MILK: +22 TM: +44



Lot **RED HIGHLINE**
30 express 144G

•Tattoo: TP 144G •Birth date: February 09 2019 •Reg# 2090086

SIRE

RED JACOBSON FED EXPRESS 3001
RED COCKBURN EXPRESS 517C
 RED COCKBURN FANNY 515X

RED MLK CRK EXPRESS 9127
 RED FOREVER QUEEN 950-2657
 RED COCKBURN RIBEYE 308U
 RED COCKBURN FANNY 126P

DAM

RED LJC MISSION STATEMENT P27
RED HIGHLINE QUEEN MOTHER 58D
 RED LLB QUEEN MOTHER 0170S

RED LJC LANCER 806
 RED LJC HANNAH 106
 RED R & M 107K STICKER 78P
 RED TAF QUEEN MOTHER 81N

BW: 86 WW: 782 YW: 1224 ----- BW: +1.0 WW: +35 YW: +61 MILK: +21 TM: +39



Lot **HIGHLINE**
31 fortitude 11G

•Tattoo: TP 11G •Birth date: January 02 2019 •Reg# 2086664

| | | | |
|-------------|-----------------------------|---|---------------------------|
| SIRE | GAR-EGL PROTEGE | — | RITO 112 OF 2536 RITO 616 |
| | PA FORTITUDE 2500 | | L B 6807 ISABEL 339 |
| | G G CLARA 0171 | — | SYDGEN C C & 7 |
| | | | G G CLARA 7192 |
| DAM | R B TOUR OF DUTY 177 | — | WERNER WAR PARTY 2417 |
| | HIGHLINE ROSEBUD 83E | | B A LADY 6807 305 |
| | REMINGTON ROSEBUD 87T | — | ZANIABAR HI GAIN DOME |
| | | | SEALIN CREEK ROSEBUD 42P |

BW: 79 WW: 790 YW: 1285 ----- BW: +0.6 WW: +45 YW: +67 MILK: +81 TM: +43



Lot **HIGHLINE**
32 fortitude 15G

•Tattoo: TP 15G •Birth date: January 03 2019 •Reg# 2086668

| | | | |
|-------------|--------------------------|---|---------------------------|
| SIRE | GAR-EGL PROTEGE | — | RITO 112 OF 2536 RITO 616 |
| | PA FORTITUDE 2500 | | L B 6807 ISABEL 339 |
| | G G CLARA 0171 | — | SYDGEN C C & 7 |
| | | | G G CLARA 7192 |
| DAM | KG SOLUTION 0018 | — | MOGCK SURE SHOT |
| | JDM BLOSSOM 11'17 | | KG RITO LADY 8724 |
| | JDM BLOSSOM 45'15 | — | LLB 9309 UPWARD 265Z |
| | | | JDM BLOSSOM 1'2011 |

BW: 75 WW: 751 YW: 1180 ----- BW: +0.5 WW: +55 YW: +102 MILK: +20 TM: +48

Lot **HIGHLINE**
33 fortitude 12G

•Tattoo: TP 12G •Birth date: January 02 2019 •Reg# 2086665

| | | | |
|-------------|--------------------------|---|------------------------------|
| SIRE | GAR-EGL PROTEGE | — | RITO 112 OF 2536 RITO 616 |
| | PA FORTITUDE 2500 | | L B 6807 ISABEL 339 |
| | G G CLARA 0171 | — | SYDGEN C C & 7 |
| | | | G G CLARA 7192 |
| DAM | CONNEALY EARNAN 076E | — | CONNEALY CONSENSUS |
| | JDM BLOSSOM 20'17 | | BRAZILA OF CONANGA 3991 839A |
| | JDM BLOSSOM 36'08 | — | RIVERBEND F DIRECTION 7'05 |
| | | | JDM BLOSSOM 13'05 |

BW: 78 WW: 600 YW: 1094 ----- BW: +1.4 WW: +57 YW: +101 MILK: +20 TM: +49

Lot **HIGHLINE**
34 fortitude 14G

•Tattoo: TP 14G •Birth date: January 03 2019 •Reg# 2086667

| | | | |
|-------------|---------------------------|---|---------------------------|
| SIRE | GAR-EGL PROTEGE | — | RITO 112 OF 2536 RITO 616 |
| | PA FORTITUDE 2500 | | L B 6807 ISABEL 339 |
| | G G CLARA 0171 | — | SYDGEN C C & 7 |
| | | | G G CLARA 7192 |
| DAM | S A V BISMARCK 5682 | — | G A R GRID MAKER |
| | HIGHLINE WENDY 13E | | S A V ABIGALE 0451 |
| | HIGHLINE WENDY 110C | — | REMITALL F UPTOWN 64Z |
| | | | ATLASTA WENDY 17Y |

BW: 79 WW: 859 YW: 1367 ----- BW: +0.5 WW: +56 YW: +98 MILK: +21 TM: +49

PA FORTITUDE 2500



Lot HIGHLINE
35 fortitude 30G

•Tattoo: TP 30G •Birth date: January 06 2019 •Reg# 2086681

SIRE
GAR-EGL PROTEGE
PA FORTITUDE 2500
G G CLARA 0171

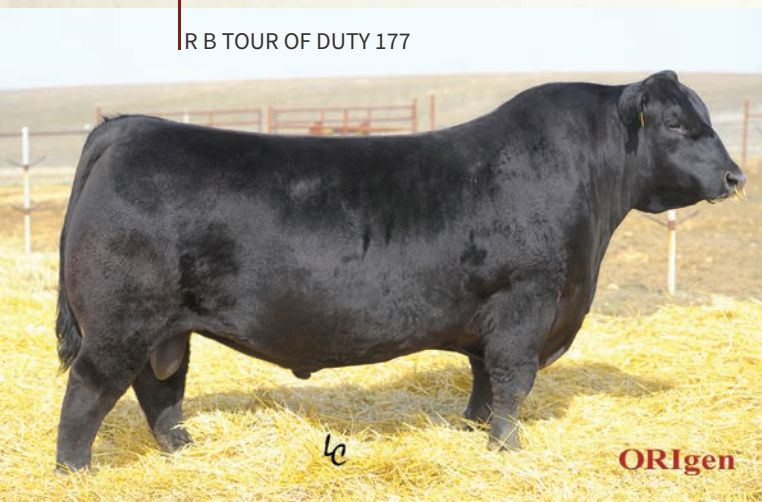
RITO 112 OF 2536 RITO 616
L B 6807 ISABEL 339
SYDGEN C C & 7
G G CLARA 7192

DAM
R B TOUR OF DUTY 177
JDM BLOSSOM 48'17
JDM BLOSSOM 3'13

WERNER WAR PARTY 2417
B A LADY 6807 305
JDM BISMARCK 13 10
JDM BLOSSOM 1'03

BW: 74 WW: 771 YW: 1219 ----- BW: -0.5 WW: +52 YW: +94 MILK: +23 TM: +49

R B TOUR OF DUTY 177



Lot HIGHLINE
36 tour of duty 46G

•Tattoo: TP 46G •Birth date: January 07 2019 •Reg# 2089069

SIRE
WERNER WAR PARTY 2417
R B TOUR OF DUTY 177
B A LADY 6807 305

CONNELLY ONWARD
BAAR USA LADY JAYE 489
VERMILION DATELINE 7078
G D LADY HI FLYER 302

DAM
PRAIRIELANE 9050- 2020
HIGHLINE MISS ERICA 148C
LLB MISS ERICA 83Z

PRAIRIELANE 6018-9050
PRAIRIELANE 3011 ESTELLE 6016
LIMESTONE MARATHON U073
LLB MISS ERICA 83X

BW: 91 WW: 709 YW: 1132 ----- BW: +3.0 WW: +54 YW: +90 MILK: +25 TM: +52



Lot HIGHLINE
37 tour of duty 98G

•Tattoo: TP 98G •Birth date: January 22 2019 •Reg# 2089238

SIRE
WERNER WAR PARTY 2417
R B TOUR OF DUTY 177
B A LADY 6807 305

CONNELLY ONWARD
BAAR USA LADY JAYE 489
VERMILION DATELINE 7078
G D LADY HI FLYER 302

DAM
JL FREEDOM 8035
LLB ERELITE 138X
CCL ERELITE 36L

PSF FREEDOM 12S
ROSE HILL JESTRESS 24P
MVF STOCKMAN 45H
EARLY SUNSET ERELITE 39F

BW: 89 WW: 764 YW: 1194 ----- BW: +3.1 WW: +49 YW: +87 MILK: +22 TM: +47



Lot **HIGHLINE**
38 upward 66G

•Tattoo: TP 66G •Birth date: January 14 2019 •Reg# 2089089

| | | | |
|------|----------------------------------|---|-----------------------------|
| SIRE | CONNEALY ONWARD | — | CONNEALY LEAD ON |
| | SITZ UPWARD 307R | — | ALTUNE OF CONANGA 6104 |
| | SITZ HENRIETTA PRIDE 81M | — | SITZ VALUE 7097 |
| | | — | SITZ HENRIETTA PRIDE 1370 |
| DAM | RED GEIS KNIGHT HAWK 72'09 | — | RED GEIS KNIGHT HAWK 223'06 |
| | RED HIGHLINE BELEVATE 19A | — | RED GEIS BLOCKANA 139'06 |
| | RED GEIS BELEVATE 247'08 | — | RED SIX MILE AVIATOR 217P |
| | | — | CROWFOOT BELEVATE 2705M |

BW: 86 WW: 698 YW: 1036 ----- BW: +2.0 WW: +49 YW: +81 MILK: +28 TM: +53



Lot **HIGHLINE**
39 upward 75G

•Tattoo: TP 75G •Birth date: January 17 2019 •Reg# 2089098

| | | | |
|------|--------------------------|---|---------------------------|
| SIRE | CONNEALY ONWARD | — | CONNEALY LEAD ON |
| | SITZ UPWARD 307R | — | ALTUNE OF CONANGA 6104 |
| | SITZ HENRIETTA PRIDE 81M | — | SITZ VALUE 7097 |
| | | — | SITZ HENRIETTA PRIDE 1370 |
| DAM | REMITALL F RAGE 9A | — | SA V 707 RITO 9969 |
| | HIGHLINE LULU 43C | — | REMITALL F KARMA 102W |
| | ATLASTA EXT LULU 167U | — | REMITALL PILOT 103P |
| | | — | BB LULA 6N |

BW: 87 WW: 713 YW: 1194 ----- BW: +2.3 WW: +55 YW: +103 MILK: +26 TM: +54



Lot **HIGHLINE**
40 upward 117G

•Tattoo: TP 117G •Birth date: January 28 2019 •Reg# 2090010

| | | | |
|------|--------------------------------------|---|---------------------------|
| SIRE | CONNEALY ONWARD | — | CONNEALY LEAD ON |
| | SITZ UPWARD 307R | — | ALTUNE OF CONANGA 6104 |
| | SITZ HENRIETTA PRIDE 81M | — | SITZ VALUE 7097 |
| | | — | SITZ HENRIETTA PRIDE 1370 |
| DAM | TGA SMART ONE 2098Z | — | KG SMART ONE 9116 |
| | HIGHLINE KINCHTRY BEAUTY 168C | — | TGA MISS KARMA 0008X |
| | LLB KINCHTRY BEAUTY 138R | — | HF CONTROLLER 35L |
| | | — | LLB KINCHTRY BEAUTY 214H |

BW: 81 WW: 696 YW: 1165 ----- BW: +0.6 WW: +52 YW: +96 MILK: +25 TM: +51



Lot **41** RED HIGHLINE
time bandit 94F

• Tattoo: TP 94F • Birth date: January 22 2018 • Reg# 2018023

| | | | | | | | |
|------|-------------------------------------|-----|------------------------------|-----|------------------------------------|-----|----------------------------|
| SIRE | RED LSF MEW GAME CHANGER 1613Y | DAM | RED 3JG-MEW GRIDIRON 806U | DAM | RED BLAIR'S TALLADEGA 218W | DAM | RED FINE LINE MULBERRY 26P |
| | RED BENCHMARK MOMENTUM 31'15 | | RED MEW ELIZABETH 710T | | RED HIGHLINE SERABELLE 107B | | RED JCC LASS 41N |
| | RED QUEEN OF BENCHMARK 984 | | RED 5L TRAVLIN EXP 1892-6295 | | RED LLB SERABELLE 293P | | RED BAR-E-L TY 31K |
| | | | RED QUEEN OF BENCHMARK 67 | | | | LLB SERABELLE 252L |

BW: 85 WW: 646 ----- BW: +0.9 WW: +37 YW: +67 MILK: +22 TM: +41

Lot **42** RED HIGHLINE
time bandit 147F

• Tattoo: TP 147F • Birth date: February 20 2018 • Reg# 2020520

| | | | | | | | |
|------|-------------------------------------|-----|------------------------------|-----|-------------------------------|-----|----------------------------|
| SIRE | RED LSF MEW GAME CHANGER 1613Y | DAM | RED 3JG-MEW GRIDIRON 806U | DAM | RED BLAIR'S TALLADEGA 218W | DAM | RED FINE LINE MULBERRY 26P |
| | RED BENCHMARK MOMENTUM 31'15 | | RED MEW ELIZABETH 710T | | RED HIGHLINE LACE 100B | | RED JCC LASS 41N |
| | RED QUEEN OF BENCHMARK 984 | | RED 5L TRAVLIN EXP 1892-6295 | | RED LLB LACE 745U | | RED TER-RON CALLOWAY 15R |
| | | | RED QUEEN OF BENCHMARK 67 | | | | RED GEIS LACE 152'05 |

BW: 78 WW: 729 ----- BW: -0.5 WW: +44 YW: +80 MILK: +23 TM: +45

Lot **43** RED HIGHLINE
time bandit 170F

• Tattoo: TP 170F • Birth date: March 30 2018 • Reg# 2035858

| | | | | | | | |
|------|-------------------------------------|-----|------------------------------|-----|--------------------------------|-----|-------------------------|
| SIRE | RED LSF MEW GAME CHANGER 1613Y | DAM | RED 3JG-MEW GRIDIRON 806U | DAM | RED U2 MAG-LITE 10Z | DAM | RED HOWE MAGNUM 169W |
| | RED BENCHMARK MOMENTUM 31'15 | | RED MEW ELIZABETH 710T | | RED HIGHLINE KURUBA 14B | | RED U-2 HI DEE HO 1459P |
| | RED QUEEN OF BENCHMARK 984 | | RED 5L TRAVLIN EXP 1892-6295 | | RED LLB KURUBA 655Z | | RED LLB CALLOWAY 222W |
| | | | RED QUEEN OF BENCHMARK 67 | | | | RED SOO LINE KURUBA 80P |

BW: 86 WW: 844 ----- BW: +2.3 WW: +62 YW: +106 MILK: +26 TM: +57



Lot **RED HIGHLINE**
44 **time bandit 114F**

•Tattoo: TP 114F •Birth date: January 28 2018 •Reg# 2018042

SIRE RED LSF MEW GAME CHANGER 1613Y — RED 3JG-MEW GRIDIRON 806U
RED BENCHMARK MOMENTUM 31'15 — RED MEW ELIZABETH 710T
 RED QUEEN OF BENCHMARK 984 — RED 5L TRAVLIN EXP 1892-6295
 RED QUEEN OF BENCHMARK 67

DAM RED BLAIR'S TALLADEGA 218W — RED FINE LINE MULBERRY 26P
RED LLB FANCY 162Z — RED JCC LASS 41N
 RED CLAY FANCY 15W — RED BRYLOR SDL SQUALL 230S
 RED D.J. MISS FANCY 20T

BW: 84 WW: 693 BW: +0.9 WW: +46 YW: +83 MILK: +18 TM: +41



Lot **RED HIGHLINE**
45 **express 189F**

•Tattoo: TP 189F •Birth date: April 15 2018 •Reg# 2035875

SIRE RED JACOBSON FED EXPRESS 3001 — RED MLK CRK EXPRESS 9127
RED COCKBURN EXPRESS 517C — RED FOREVER QUEEN 950-2657
 RED COCKBURN FANNY 515X — RED COCKBURN RIBEYE 308U
 RED COCKBURN FANNY 126P

DAM RED LJC MISSION STATEMENT P27 — RED LJC LANCER 806
RED HIGHLINE HEATHER 36B — RED LJC HANNAH 106
 RED SHODEREE HEATHER 65N — RED GEFB BEEFMAKER 2101
 RED RAFTER IR HEATHER 46K

BW: 78 WW: 860 BW: -0.7 WW: +54 YW: +89 MILK: +23 TM: +50

Lot **RED HIGHLINE**
46 **express 191F**

•Tattoo: TP 191F •Birth date: April 16 2018 •Reg# 2035876

SIRE RED JACOBSON FED EXPRESS 3001 — RED MLK CRK EXPRESS 9127
RED COCKBURN EXPRESS 517C — RED FOREVER QUEEN 950-2657
 RED COCKBURN FANNY 515X — RED COCKBURN RIBEYE 308U
 RED COCKBURN FANNY 126P

DAM RED BLAIR'S TALLADEGA 218W — RED FINE LINE MULBERRY 26P
RED LLB JOANNA 393A — RED JCC LASS 41N
 RED LLB JOANNA 60U — RED TER-RON CALLOWAY 15R
 RED SSS JOANNA 870G

BW: 93 WW: 631 BW: +2.2 WW: +29 YW: +51 MILK: +19 TM: +34

Lot **RED HIGHLINE**
47 **express 192F**

•Tattoo: TP 192F •Birth date: April 17 2018 •Reg# 2064640

SIRE RED JACOBSON FED EXPRESS 3001 — RED MLK CRK EXPRESS 9127
RED COCKBURN EXPRESS 517C — RED FOREVER QUEEN 950-2657
 RED COCKBURN FANNY 515X — RED COCKBURN RIBEYE 308U
 RED COCKBURN FANNY 126P

DAM RED PREMIER PATRIOT 16 — SAYRE PATRIOT
RED GEIS BELEVATE 59'12 — CAMILLA BELLE 54D
 RED GEIS BELEVATE 247'08 — RED SIX MILE AVIATOR 217P
 CROWFOOT BELEVATE 2705M

BW: 77 WW: 735 BW: -0.9 WW: +36 YW: +52 MILK: +21 TM: +39



Lot **48** | RED HIGHLINE
fusion 163F

• Tattoo: TP 163F • Birth date: March 24 2018 • Reg# 2035851

SIRE

RED ANDRAS IN FOCUS B175
RED ANDRAS FUSION R236
RED ANDRAS BELLE B167

MYTTY IN FOCUS
RED DI ESTONIA 316
RED ANDRAS THUNDER B105
RED ANDRAS BELLE 416

DAM

RED FEDDES BIG SKY R9
RED HIGHLINE PRIDE 5D
RED HIGHLINE PRIDE 24B

RED BIEBER MAKE MIMI 7249
RED FEDDES LAKINA 310
RED LJC MISSION STATEMENT P27
RED SOUTHLAND PRIDE 241U

BW: 78 WW: 735 ----- BW: +0.2 WW: +39 YW: +72 MILK: +26 TM: +46

Lot **49** | RED HIGHLINE
fusion 66F

• Tattoo: TP 66F • Birth date: January 18 2018 • Reg# 2018001

SIRE

RED ANDRAS IN FOCUS B175
RED ANDRAS FUSION R236
RED ANDRAS BELLE B167

MYTTY IN FOCUS
RED DI ESTONIA 316
RED ANDRAS THUNDER B105
RED ANDRAS BELLE 416

DAM

RED BAR-E-L LEAD TIME 45Z
RED HIGHLINE ROBERTA LEE 40B
RED LLB ROBERTA LEE 741Z

RED NORTHLINE FAT TONY 605U
RED BAR-E-L DYNOFIRE 72X
RED BLAIR'S TALLADEGA 218W
RED LLB YUKON 11R

BW: 84 WW: 517 ----- BW: -0.5 WW: +8 YW: +27 MILK: +21 TM: +27

Lot **50** | RED HIGHLINE
fusion 158F

• Tattoo: TP 158F • Birth date: March 18 2018 • Reg# 2035846

SIRE

RED ANDRAS IN FOCUS B175
RED ANDRAS FUSION R236
RED ANDRAS BELLE B167

MYTTY IN FOCUS
RED DI ESTONIA 316
RED ANDRAS THUNDER B105
RED ANDRAS BELLE 416

DAM

RED U-2 MISSION 92Y
RED HIGHLINE FANCY 135D
RED LLB FANCY 162Z

RED U2 MISSION 61W
RED U-2 STORMY 1303N
RED BLAIR'S TALLADEGA 218W
RED CLAY FANCY 15W

BW: 88 WW: 649 ----- BW: +2.3 WW: +28 YW: +59 MILK: +17 TM: +31



Lot **RED HIGHLINE**
51 grand slam 95F

• Tattoo: TP 95F • Birth date: January 23 2018 • Reg# 2018025

- | | | | |
|-------------|-------------------------------------|---|----------------------------|
| SIRE | RED VGW GAME PLAN 816 | — | RED VGW GAME PLAN 508 |
| | RED SIX MILE GRAND SLAM 130Z | — | RED VGW TW DOLL 0270 |
| | RED SIX MILE REBECCA 216X | — | RED SSS BUCC 30U |
| DAM | RED HIGHLINE MULBERRY 1Y | — | RED FINE LINE MULBERRY 26P |
| | RED HIGHLINE SHAWNEE 145C | — | RED SHODEREE LADY 196S |
| | RED LLB MISS SHAWNEE 26W | — | RED TER-RON CALLOWAY 15R |
| | | | RED LAZY M ICE 5J |

BW: 83 WW: 661 ----- BW: +1.0 WW: +31 YW: +55 MILK: +23 TM: +39



Lot **RED HIGHLINE**
52 grand slam 103F

• Tattoo: TP 103F • Birth date: January 25 2018 • Reg# 2018033

- | | | | |
|-------------|-------------------------------------|---|---------------------------|
| SIRE | RED VGW GAME PLAN 816 | — | RED VGW GAME PLAN 508 |
| | RED SIX MILE GRAND SLAM 130Z | — | RED VGW TW DOLL 0270 |
| | RED SIX MILE REBECCA 216X | — | RED SSS BUCC 30U |
| DAM | RED U-2 MISSION 92Y | — | RED U2 MISSION 61W |
| | RED HIGHLINE TESS 166C | — | RED U-2 STORMY 1303N |
| | RED SHODEREE TESS 145P | — | RED FLYING K DYNAMITE 66L |
| | | | RED SHODEREE TESS 107J |

BW: 92 WW: 733 ----- BW: +2.9 WW: +42 YW: +73 MILK: +24 TM: +45



Lot **RED HIGHLINE**
53 grand slam 105F

• Tattoo: TP 105F • Birth date: January 25 2018 • Reg# 2018035

- | | | | |
|-------------|-------------------------------------|---|----------------------------|
| SIRE | RED VGW GAME PLAN 816 | — | RED VGW GAME PLAN 508 |
| | RED SIX MILE GRAND SLAM 130Z | — | RED VGW TW DOLL 0270 |
| | RED SIX MILE REBECCA 216X | — | RED SSS BUCC 30U |
| DAM | RED U-2 MISSION 92Y | — | RED U2 MISSION 61W |
| | RED HIGHLINE BAYBERRY 173C | — | RED U-2 STORMY 1303N |
| | RED LLB BAYBERRY 644Z | — | RED BLAIR'S TALLADEGA 218W |
| | | | RED LLB BAYBERRY 457U |

BW: 82 WW: 713 ----- BW: +1.2 WW: +34 YW: +63 MILK: +22 TM: +39



Lot **54** RED HIGHLINE **cadillac 142F**

• Tattoo: TP 142F • Birth date: February 14 2018 • Reg# 2020501

SIRE

RED TR ROLLS ROYCE 44B
RED U2 CADILLAC 111D
RED U2 LARKA 539B

— RED BIEBER ROLLIN DEEP Y118
RED TR DOLL TARA 340S
— RED U2 MISSION 61W
RED U-2 LARKA 10X

DAM

RED FEDDES BIG SKY R9
RED HIGHLINE YUKON 3D
RED HIGHLINE YUKON 37B

— RED BIEBER MAKE MIMI 7249
RED FEDDES LAKINA 310
— RED BAR-E-L LEAD TIME 45Z
RED LLB YUKON 11R

BW: WW: 778 ----- BW: +1.6 WW: +45 YW: +80 MILK: +22 TM: +45

Lot **55** RED HIGHLINE **cadillac 35F**

• Tattoo: TP 35F • Birth date: January 12 2018 • Reg# 2017937

SIRE

RED TR ROLLS ROYCE 44B
RED U2 CADILLAC 111D
RED U2 LARKA 539B

— RED BIEBER ROLLIN DEEP Y118
RED TR DOLL TARA 340S
— RED U2 MISSION 61W
RED U-2 LARKA 10X

DAM

RED HIGHLINE MULBERRY 1Y
RED HIGHLINE COUNTESS 70D
RED LLB COUNTESS 805Y

— RED FINE LINE MULBERRY 26P
RED SHODEREE LADY 196S
— RED LLB CALLOWAY 533W
RED SOO LINE JINNY 480R

BW: 72 WW: 652 ----- BW: +1.2 WW: +34 YW: +63 MILK: +19 TM: +36

Lot **56** RED HIGHLINE **cadillac 99F**

• Tattoo: TP 99F • Birth date: January 24 2018 • Reg# 2018029

SIRE

RED TR ROLLS ROYCE 44B
RED U2 CADILLAC 111D
RED U2 LARKA 539B

— RED BIEBER ROLLIN DEEP Y118
RED TR DOLL TARA 340S
— RED U2 MISSION 61W
RED U-2 LARKA 10X

DAM

RED LJC MISSION STATEMENT P27
RED HIGHLINE HEATHER 24D
RED HIGHLINE HEATHER 9Z

— RED LJC LANCER 806
RED LJC HANNAH 106
— RED HIGHLINE MOMENTUM 2W
RED HIGHLINE HEATHER 5X

BW: 86 WW: 615 ----- BW: +3.2 WW: +28 YW: +61 MILK: +17 TM: +31



Lot **RED HIGHLINE**
57 automatic 151F

• Tattoo: TP 151F • Birth date: February 25 2018 • Reg# 2020524

- | | | | |
|-------------|---------------------------------|---|--------------------------------|
| SIRE | RED BRYLOR AUTOMATIC 95B | — | RED WHEEL DODGE CITY 61Y |
| | RED LWNBRG AUTOMATIC 60D | — | BLACK BRYLOR LAKME 155Y |
| | RED TED GOLDEN BOY 119Y | — | RED BHR GOLDEN BOY 453B |
| DAM | RED SIX MILE SAKIC 832S | — | RED TED GLACIER MARIAS 101L |
| | RED HIGHLINE BEULA 8C | — | RED SIX MILE AVIATOR 217P |
| | RED HIGHLINE BELA 21Z | — | RED SIX MILE SIERA 257P |
| | | — | RED BENCHMARK GRAND CANYON 611 |
| | | — | RED HIGHLINE BELA 2X |

BW: 80 WW: 691 ----- BW: +2.1 WW: +44 YW: +67 MILK: +18 TM: +40

RED LWNBRG AUTOMATIC 60D



Lot **RED HIGHLINE**
58 automatic 153F

• Tattoo: TP 153F • Birth date: March 02 2018 • Reg# 2067207

- | | | | |
|-------------|--------------------------------------|---|-----------------------------|
| SIRE | RED BRYLOR AUTOMATIC 95B | — | RED WHEEL DODGE CITY 61Y |
| | RED LWNBRG AUTOMATIC 60D | — | BLACK BRYLOR LAKME 155Y |
| | RED TED GOLDEN BOY 119Y | — | RED BHR GOLDEN BOY 453B |
| DAM | RED U-2 MISSION 92Y | — | RED TED GLACIER MARIAS 101L |
| | RED HIGHLINE QUEEN MOTHER 61B | — | RED U2 MISSION 61W |
| | RED LLB QUEEN MOTHER 0170S | — | RED U-2 STORMY 1303N |
| | | — | RED R & M 107K STICKER 78P |
| | | — | RED TAF QUEEN MOTHER 81N |

BW: 78 WW: 697 ----- BW: +0.0 WW: +32 YW: +49 MILK: +19 TM: +35



Lot **HIGHLINE**
59 trademark 126F

• Tattoo: TP 126F • Birth date: February 03 2018 • Reg# 2020508

- | | | | |
|-------------|-------------------------|---|-------------------------|
| SIRE | JL SIGNATURE 4106 | — | SA V ELIMINATOR 9105 |
| | U2 TRADEMARK 22D | — | JL CASSIE 8262 |
| | SANE UPD. PRIDE 115Z | — | TOKACH UPDATE 9009 |
| DAM | HF CONCORDE 252Y | — | SANE 416 PRIDE 120W |
| | LLB BEULAH 800B | — | CONNEALY CONSENSUS 7229 |
| | LLB BEULAH 32Z | — | HF ECHO 84R |
| | | — | T LAZY H TREASURY 54U |
| | | — | T LAZY H BEULAH 32X |

BW: 84 WW: 687 ----- BW: +2.4 WW: +44 YW: +77 MILK: +23 TM: +45



Lot **HIGHLINE**
60 trademark 137F

• Tattoo: TP 137F • Birth date: February 10 2018 • Reg# 2020515

SIRE
JL SIGNATURE 4106
U2 TRADEMARK 22D
SANE UPD. PRIDE 115Z

— S A V ELIMINATOR 9105
JL CASSIE 8262
— TOKACH UPDATE 9009
SANE 416 PRIDE 120W

DAM
ATLASTA BB TRAVELER 6807 047T
ATLASTA WENDY 17Y
ATLASTA WENDY

— D H D TRAVELER 6807
LEACHMAN WENDY 9031
— REMITALL PILOT 103P
MLA BUFFALO GAL 55'97

BW: 84 WW: 743 ----- BW: +1.1 WW: +49 YW: +79 MILK: +23 TM: +48



Lot **HIGHLINE**
61 trademark 164F

• Tattoo: TP 164F • Birth date: March 25 2018 • Reg# 2035852

SIRE
JL SIGNATURE 4106
U2 TRADEMARK 22D
SANE UPD. PRIDE 115Z

— S A V ELIMINATOR 9105
JL CASSIE 8262
— TOKACH UPDATE 9009
SANE 416 PRIDE 120W

DAM
REMITALL F UPTOWN 64Z
HIGHLINE EVERGREEN 139C
ATLASTA EISA EVERGREEN 130Y

— SITZ UPWARD 307R
SHANDEEN BLACK ANGEL 133T
— ATLASTA FOREVER RUSS 37S
BB EISA EVERGREEN 18P

BW: 88 WW: 842 ----- BW: +2.9 WW: +59 YW: +97 MILK: +29 TM: +59

Lot **HIGHLINE**
62 trademark 165F

• Tattoo: TP 165F • Birth date: March 26 2018 • Reg# 2035853

SIRE
JL SIGNATURE 4106
U2 TRADEMARK 22D
SANE UPD. PRIDE 115Z

— S A V ELIMINATOR 9105
JL CASSIE 8262
— TOKACH UPDATE 9009
SANE 416 PRIDE 120W

DAM
REMINGTON HEADS UP 410T
REMINGTON EUGENIE 32Y
EVERBLACK EUGENIE 67M

— SUMMIT ANGUS HEADS UP 17P
REMINGTON BARBARA 103P
— SUNMOUND ESTON 27F
EVERBLACK EUGENIE 104H

BW: 83 WW: 719 ----- BW: +2.0 WW: +39 YW: +65 MILK: +23 TM: +43

Lot **HIGHLINE**
63 trademark 177F

• Tattoo: TP 177F • Birth date: April 04 2018 • Reg# 2035864

SIRE
JL SIGNATURE 4106
U2 TRADEMARK 22D
SANE UPD. PRIDE 115Z

— S A V ELIMINATOR 9105
JL CASSIE 8262
— TOKACH UPDATE 9009
SANE 416 PRIDE 120W

DAM
GDAR RAINMAKER 013
REMITALL MATILDA 341P
LLB MATILDA 451H

— SITZ S L S RAINMAKER 7596
G D A R RACHEL 3277
— PAT TEX 18D
PAT MATILDA 451D

BW: 91 WW: 865 ----- BW: +3.1 WW: +57 YW: +88 MILK: +25 TM: +54



Let **HIGHLINE TWIN**
64 trademark 178F

•Tattoo: TP 178F •Birth date: April 04 2018 •Reg# 2035865

| | | |
|------|----------------------------|-------------------------------|
| SIRE | JL SIGNATURE 4106 | — SAV ELIMINATOR 9105 |
| | U2 TRADEMARK 22D | JL CASSIE 8262 |
| | SANE UPD. PRIDE 115Z | TOKACH UPDATE 9009 |
| DAM | REMITALL F UPTOWN 64Z | — SITZ UPWARD 307R |
| | HIGHLINE WENDY 110C | SHANDEEN BLACK ANGEL 133T |
| | ATLASTA WENDY 17Y | ATLASTA BB TRAVELER 6807 047T |
| | | — ATLASTA WENDY |

BW: 64 WW: 734 ----- BW: +1.9 WW: +55 YW: +93 MILK: +28 TM: +55



Let **HIGHLINE TWIN**
65 trademark 179F

•Tattoo: TP 179F •Birth date: April 04 2018 •Reg# 2035867

| | | |
|------|----------------------------|-------------------------------|
| SIRE | JL SIGNATURE 4106 | — SAV ELIMINATOR 9105 |
| | U2 TRADEMARK 22D | JL CASSIE 8262 |
| | SANE UPD. PRIDE 115Z | TOKACH UPDATE 9009 |
| DAM | REMITALL F UPTOWN 64Z | — SITZ UPWARD 307R |
| | HIGHLINE WENDY 110C | SHANDEEN BLACK ANGEL 133T |
| | ATLASTA WENDY 17Y | ATLASTA BB TRAVELER 6807 047T |
| | | — ATLASTA WENDY |

BW: 65 WW: 725 ----- BW: +1.9 WW: +55 YW: +93 MILK: +28 TM: +55



Let **HIGHLINE**
66 trademark 187F

•Tattoo: TP 187F •Birth date: April 12 2018 •Reg# 2035873

| | | |
|------|---------------------------|--------------------------|
| SIRE | JL SIGNATURE 4106 | — SAV ELIMINATOR 9105 |
| | U2 TRADEMARK 22D | JL CASSIE 8262 |
| | SANE UPD. PRIDE 115Z | TOKACH UPDATE 9009 |
| DAM | LIMESTONE MARATHON U073 | — BC MARATHON 7022 |
| | LLB MISS ERICA 83Z | O C C BLACKBIRD 796F |
| | LLB MISS ERICA 83X | LLB 2S GRAND DESIGN 113U |
| | | — PAT ERICA 83G |

BW: 91 WW: 690 ----- BW: +3.0 WW: +42 YW: +69 MILK: +21 TM: +42



Lot **HIGHLINE**
67 **angus valley 156F**

• Tattoo: TP 156F • Birth date: March 14 2018 • Reg# 2035843

SIRE
 S A V IRON MOUNTAIN 8066
S A V ANGUS VALLEY 1867
 S A V MAY 2397

TC GRIDIRON 258
 S A V MADAME PRIDE 3249
 S A F 598 BANDO 5175
 S A V MAY 7238

DAM
 LLB OLD POST 361A
HIGHLINE RUBY LAURA 139D
 GEIS RUBY LAURA 90'08

DOUBLE AA OLD POST BANDOLIER
 JUSTAMERE 333N ECHO 116R
 HF KODIAK 5R
 GEIS RUBY LAURA 84'01

BW: 70 WW: 605 ----- BW: +1.1 WW: +32 YW: +61 MILK: +15 TM: +31

Lot **HIGHLINE**
68 **angus valley 159F**

• Tattoo: TP 159F • Birth date: March 18 2018 • Reg# 2035847

SIRE
 S A V IRON MOUNTAIN 8066
S A V ANGUS VALLEY 1867
 S A V MAY 2397

TC GRIDIRON 258
 S A V MADAME PRIDE 3249
 S A F 598 BANDO 5175
 S A V MAY 7238

DAM
 LLB OLD POST 361A
HIGHLINE MATLIDA 115D
 REMITALL MATILDA 341P

DOUBLE AA OLD POST BANDOLIER
 JUSTAMERE 333N ECHO 116R
 GDAR RAINMAKER 013
 LLB MATILDA 451H

BW: 87 WW: 774 ----- BW: +3.6 WW: +46 YW: +77 MILK: +20 TM: +43

Lot **HIGHLINE**
69 **kodiak 122F**

• Tattoo: TP 122F • Birth date: February 01 2018 • Reg# 2020505

SIRE
 SOO LINE KODIAK 9188
LLB 9188 KODIAK 612A
 LLB QUEEN S BEAUTY 61W

HF KODIAK 5R
 LLB EULIMA 283R
 TIMBER TRAIL GRIDLOCK
 JJR QUEEN 682M

DAM
 LLB OLD POST 361A
HIGHLINE EISA EVERGREEN 158D
 ATLASTA EISA EVERGREEN 130Y

DOUBLE AA OLD POST BANDOLIER
 JUSTAMERE 333N ECHO 116R
 ATLASTA FOREVER RUSS 37S
 BB EISA EVERGREEN 18P

BW: 78 WW: 749 ----- BW: +2.3 WW: +39 YW: +60 MILK: +18 TM: +38

Lot **HIGHLINE**
70 **kodiak 136F**

• Tattoo: TP 136F • Birth date: February 10 2018 • Reg# 2020514

SIRE
 SOO LINE KODIAK 9188
LLB 9188 KODIAK 612A
 LLB QUEEN S BEAUTY 61W

HF KODIAK 5R
 LLB EULIMA 283R
 TIMBER TRAIL GRIDLOCK
 JJR QUEEN 682M

DAM
 SITZ UPWARD 307R
HIGHLINE LULU 32D
 ATLASTA EXT LULU 167U

CONNELLY ONWARD
 SITZ HENRIETTA PRIDE 81M
 REMITALL PILOT 103P
 BB LULA 6N

BW: 69 WW: 776 ----- BW: +0.3 WW: +41 YW: +77 MILK: +23 TM: +44

SALE TERMS & CONDITIONS

The terms of the sale are cash or cheque payable in Canadian funds upon the conclusion of the sale. The right of property shall not pass until after settlement is made, no animal will be released from the premises until settlement is made. Each animal becomes the risk of the purchaser as soon as sold. Each animal will be sold to the highest bidder. In the case of disputes, bidding will be reopened between the parties involved. If no further bid is made, the buyer will be the person from whom the auctioneer accepted the last bid. The auctioneer's decision will be final.

CERTIFICATE OF REGISTRATION

A certificate of registration will be transferred when payment is made in full.

ANNOUNCEMENTS

All announcements made from the auction block will take precedence over the printed material.

BREEDERS GUARANTEE

All animals are sold as guaranteed breeders as outlined by the CAA bylaws. No guarantee is given that a bull's semen will freeze. All bulls will be semen tested prior delivery. We reserve the right to draw semen on any bull. Guarantee does not apply to bulls injured, sick or uncared for. Under no circumstances shall the seller be liable for more than the purchase price of the bull.

INSURANCE

Insurance will be available sale day.

ACCIDENTS

Although every precaution will be taken to protect the safety and comfort of the buyers, neither the sale manager, auctioneer or owners assume responsibility in this matter and liability, legal or otherwise in the event of accident or loss of property. All persons attend the at their own risk.

Castlerock Marketing
Box 415, Swift Current, SK, S9H 3V8

CANADA POSTES
POST CANADA



Postage paid

Port payé

Personalized
Mail

Courrier
personnalisé

7262554

