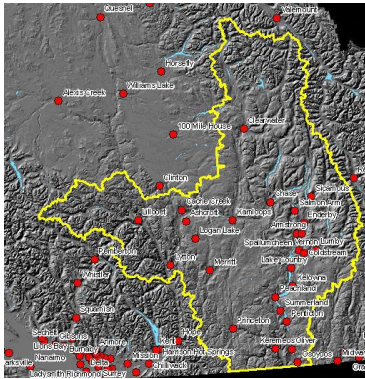


# Thompson/Okanagan BEC Update

## April 2012



Ministry of  
Forests, Lands and  
Natural Resource Operations



### Mike Ryan Research Ecologist

Thompson/Okanagan Region  
441 Columbia Street, Kamloops, BC., V2C 2T3  
250-828-4129  
michael.ryan@gov.bc.ca

## Summary

BGC mapping and the BEC classification form the cornerstone for many resource management activities in the Thompson/Okanagan Region. A substantial amount of new information has been collected over the last 20 years that builds on the old BEC classification published in 1990 and provides a much better basis for improved BGC mapping and the classification of undescribed or poorly sampled site series as well as improved characterization of existing site series. BGC mapping in the Thompson/Okanagan Region was completely revised with the release of BGC mapping Version 6 in 2006. No further substantial changes are expected except for changes to the western portion of the PPxh2, the distribution of the ESSFdc1/dc2, and low-elevation portions of the ICHmw2.

Over the next several years, several revised BEC field guides for the Thompson/Okanagan Region will be released which will replace the 1990 Kamloops field guide and draft BEC materials produced in 2005. This will consist of:

- a single guide for the Lillooet TSA (most of the BGC units in this TSA are distinct and are not found elsewhere)
- Two field guides for the drybelt in the remaining Thompson/Okanagan Forest Districts that characterize and describe low-elevation BGC units (BG, PP and IDF) and high-elevation units (MS and ESSF), respectively.
- Two field guides, possibly in conjunction with the Kootenay/Boundary Region, which share many of the same units that encompass the wetbelt portions of the Okanagan-Shuswap and Thompson Rivers Districts.

More detailed information on past and future changes to BGC mapping and BEC classification in the Thompson/Okanagan Region are provided below.

## 1.0 Background

- BGC mapping and site classification are fundamental to many forestry, planning, conservation, and environmental assessment initiatives.
- Due to improved knowledge and information, Biogeoclimatic Ecosystem Classification (BEC) has changed considerably over the past 20 years.
- The most current version of BGC mapping is version 8 (released in February 2012) and is available on GeoBC and BECWeb - <http://www.for.gov.bc.ca/hre/becweb/>. Users should check this site for updates each year or use the GeoBC (LRDW) website for the "official" version.
- In the Thompson/Okanagan Region (former Kamloops Region), the most recent official site series classification is Land Management Handbook 23 (LMH 23) Lloyd et al. (1990). This is available online at: <http://www.for.gov.bc.ca/hre/becweb/resources/classificationreports/regional/kaguides.html>
- Preliminary draft BEC classification materials were generated in 2005 along with a complete revision of BGC mapping in the Thompson/Okanagan Region.
- Over the next 1- 3 years, BEC users should expect new BEC field guides for the Thompson/Okanagan Region
- This update provides a summary of current and proposed changes to BEC in the Thompson/Okanagan Region

## **2.0 BEC Revision Progress to Present**

### **2.1 BEC Classification**

- The 1990 BEC Field Guide for the Kamloops Region was based on ~2600 BEC plots which had been sampled during the late 1970s and early 1980s. Many areas were poorly sampled because of limited access and many ecosystem descriptions were based on fewer than 5 plots particularly those near the wettest and driest ends of the soil moisture regime. Furthermore, a number of BGC units lacked a BEC classification.
- Between 1990 and present, over 10,000 plots from additional BEC sampling, ecosystem mapping projects (TEM and PEM), SIBEC, environmental assessment, and other projects have been added to the Provincial BEC database.
- Thompson/Okanagan Region now contains ~13,000 plots, about 5 x the amount of data that were available when the Kamloops BEC field guide was published in 1990.
- This new information facilitates improved descriptions of existing units and supports the establishment of both new subzone/variants and new site series.
- Draft BEC Field Guide materials were produced in 2005 for almost all BEC units to meet the needs of several PEM projects occurring in the Thompson/Okanagan Region.
- These draft materials provided several advantages:
  - better distinction of forested ecosystems and better selection of indicator species and site features based on additional data
  - better coverage of site series at the extremes of the soil moisture regime
  - written descriptions of site series
  - characterization of previously unclassified BEC units including wetlands, grasslands, rock outcrops, talus, and avalanche tracks
- Disadvantages of the 2005 draft classification are:
  - it had not yet been correlated at a provincial level to ensure the classification matched the provincial BEC classification system
  - it lacked management interpretations, so users were still required to use the 1990 classification for species selection, stocking standards, and SIBEC productivity estimates.

### **2.2 BGC Mapping**

- In 1990 when the Kamloops BEC field guide was published, BGC mapping had been completed for the Thompson/Okanagan Region at a 1:250,000 scale.
- In response to ecosystem mapping and other management demands, BGC mapping for the entire Thompson/Okanagan Region was revised and published in January 2006 with version 6 of the official BGC map. The revised BGC maps were superior to the old version because:
  - new tools were used to delineate BGC lines including elevation transects, sample plots, forest cover (tree species composition), topographic (contours, slope and aspect), and airphotos/orthoimages to identify grassland, alpine, parkland and woodland areas.
  - the scale of mapping was increased from 1:250,000 down to 1:50,000
  - additional knowledge led to the subdivision of a number of BGC units from subzones to variants and the recognition and mapping of woodland, parkland and alpine units

## **3.0 Future Changes**

- Work is underway on the preparation of separate Field Guides for the Lillooet TSA, low-elevation drybelt and high-elevation drybelt of the Cascades (Merritt TSA), Thompson Rivers, and Okanagan-Shuswap Districts, and wetbelt portions of the Thompson Rivers and Okanagan-Shuswap Districts.
- Depending on funding and other resources, it is hoped that these field guides will be released beginning in 2013
- No extensive BGC mapping will be released until field guide materials are ready for publication and management interpretations, such as species selection, stocking standards and SIBEC productivity estimates have been developed.
- All new materials will be released with crosswalk tables linking the new system to the 1990 and draft 2005 units to new units.
- New guide materials will follow the new standards for site series numbering and coding so that forested site series numbers will consist of a three-numbered code rather than the historical two-numbered code. A

technical note outlining the new coding standards is available online at:

<http://www.for.gov.bc.ca/hfd/pubs/Docs/En/En106.htm>

- At an international level, the scientific names of many plant species have changed over the last several years. These changes have now been incorporated into the "Official Provincial Plant Species Codes" (Ver. 7, 2012) which forms the basis for the scientific and common names used in the BEC classification as well as other government databases. This may lead to some confusion when the new guides are published as new scientific names will be used that may not be familiar to many users. Crosswalk tables will be included in the new guides that link current scientific names to the old names that they have replaced. Common names, that many users are familiar with, will remain essentially unchanged. The official provincial plant species code list is available online at:  
<http://www.for.gov.bc.ca/hre/becweb/resources/codes-standards/standards-species.html>
- Please contact me if you would like to review new site series and mapping or have any other questions or concerns. Your input would be appreciated before new products are published.

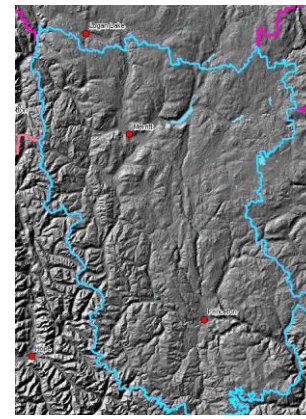
## 4.0 Cascades Forest District (DCS)

### 4.1 Merritt TSA

#### 4.1.1 Historical Changes

In 2005, new BGC variants were identified (ESSFxc1/xc2, MSxk1/xk2, MSmw1) and mapped in BGCv6 (2006) and draft BEC Classifications were produced in 2005 for all units excluding woodland, parkland, alpine units and coastal units (CWHms1, MHmm2).

The following table summarises the link between past and current BGC units and the current BGC unit to use for management interpretations such as stocking standards, tree species selection guidelines and SIBEC estimates in the Merritt TSA:



Current BGC unit	Historic BGC unit	Date name changed	BGC Unit to use for tree species selection guidelines, stocking standards and SIBEC estimates <sup>1</sup>
BGxh2			BGxh2
BGxw1			BGxw1
CWHms1			CWHms1 <sup>2</sup>
ESSFdc2			ESSFdc2
ESSFdcp	ESSFdcp/ATunp	2006	parkland – no site series
ESSFdcw	ESSFdc2	2006	ESSFdc2
ESSFmw1	ESSFmw	2006	ESSFmw
ESSFmwp	ESSFmwp or AT-ESSFmwp		parkland – no site series
ESSFmww	ESSFmw	2006	ESSFmw
ESSFxc1	ESSFxc	2006	ESSFxc
ESSFxc2	ESSFxc	2006	ESSFxc
ESSFxcp	ESSFxcp or AT-ESSFxcp		parkland – no site series
ESSFxcw	ESSFxc	2006	ESSFxc
IDFdk1			IDFdk1
IDFdk1a			Grassland
IDFdk2			IDFdk2
IDFdk2a			Grassland
IDFxh1			IDFxh1
IDFxh1a			Grassland
IDFxh2			IDFxh2
IDFxh2a			Grassland
IMAun	AT		alpine – no site series
MHmm2			MHmm2 <sup>2</sup>
MSdm2			MSdm2
MSmw1	MSun or MSdm2	2006	MSdm2
MSxk1	MSxk	2006	MSxk
MSxk2	MSxk	2006	MSxk
MSxk3	MSxk	2006	MSxk
PPxh1			PPxh1
PPxh1a			Grassland
PPxh2			PPxh2
PPxh2a			Grassland

<sup>1</sup>Please refer to "Reference Guide for FDP Stocking Standards (updated Nov. 26, 2010) available at: [http://www.for.gov.bc.ca/hfp/silviculture/stocking\\_stds.htm](http://www.for.gov.bc.ca/hfp/silviculture/stocking_stds.htm) and "SISU by BGC Unit Report" for SIBEC estimates at [www.for.gov.bc.ca/hre/sibec](http://www.for.gov.bc.ca/hre/sibec). These BGC units, unless otherwise noted, are described in "A Guide to Site Identification and Interpretation for the Kamloops Forest Region LMH 23" – Lloyd *et al.* 1990. Available at: <http://www.for.gov.bc.ca/hre/becweb/resources/classificationreports/regional/kaguides.html>

<sup>2</sup>This BGC unit is described in "A Field Guide for Site Identification and Interpretation for the Vancouver Forest Region" Land Management Handbook 39 (1997) Available at <http://www.for.gov.bc.ca/hfd/pubs/Docs/Lmh/Lmh28.htm>

## 4.1.2 Present and Future Changes

During the 2011 field season, the draft BEC classification for the Merritt District was field tested and classification gaps filled for missing or underrepresented site series. The forested classification framework was completed during the winter of 2011 and the classification (spring 2012) is undergoing a provincial correlation review. **A final classification is anticipated in 2013 which will encompass the Merritt District and the drybelt portion of the Thompson Rivers and Okanagan-Shuswap Districts.** Two volumes will be published:

- Volume 1: Low-elevation drybelt units (BG, PP and IDF Zones)
- Volume 2: High-elevation drybelt units (MS and ESSF Zones)

No changes are anticipated in the BGC mapping for the Merritt TSA with the exception of minor BGC line adjustment resulting from field observations.

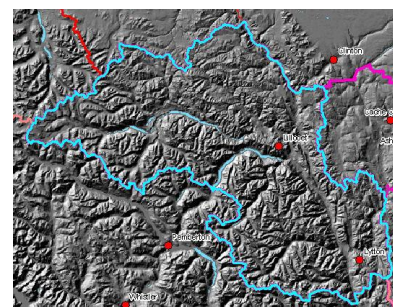
It is anticipated that over the next few years, the Coast Regions will generate a revised BEC classification that will result in a revised classification for the CWHms1 and MHmm2 – two units that encompass very small areas within the Merritt TSA.

## 4.2 Lillooet TSA

### 4.2.1 Historical Changes

In 2005, new BGC variants were identified (ESSFdv1/dv2, ESSFmw1/mw2, ESSFxc2/xc3, IDFdc, IDFxc, IDFww, MSdc1/dc3, MSmw1, MSxk3) and mapped in BGCv6 (2006) and draft BEC classifications were produced in 2005 for all units excluding woodland, parkland, alpine units, coastal units (CWHms1, MHmm2) and those which predominantly occur in the Cariboo Forest Region (BGxh3, BGxw2, IDFdk3, IDFwx, ESSFv2).

The following table summarises the link between past and current BGC units in the Lillooet TSA:



Current BGC unit	Historic BGC unit	Date name changed	BGC Unit to use for tree species selection guidelines, stocking standards and SIBEC estimates <sup>1</sup>
BFAAun	ATun or ATunp	2006	alpine – no site series
BGxh2			BGxh2
BGxh3			no described site series <sup>4</sup>
BGxw2			no described sites series <sup>4</sup>
CWHms1			CWHms1 <sup>3</sup>
ESSFdc2			ESSFdc2
ESSFdcp	ESSFdcp or AT-Edcp	2006	alpine/parkland – no site series
ESSFdcw	ESSFdc2	2006	ESSFdc2
ESSFdv1	ESSFdv	2006	ESSFdv
ESSFdv2	ESSFdv	2006	ESSFdv
ESSFdvp	ESSFdvp or AT-Edvp	2006	alpine/parkland – no site series
ESSFdvw	ESSFdv	2006	ESSFdv
ESSFmw1	ESSFmw	2006	ESSFmw
ESSFmw2	ESSFmw	2006	ESSFmw
ESSFmwp	ESSFmwp or AT-Emwp	2006	alpine/parkland – no site series
ESSFmww	ESSFmw	2006	ESSFmw
ESSFxc2	ESSFxc	2006	ESSFxc
ESSFxc3	ESSFxc	2006	ESSFxc
ESSFxcp	ESSFxcp or AT-Excp	2006	alpine/parkland – no site series
ESSFxcw	ESSFxc	2006	ESSFxc
ESSFv2			ESSFv2 <sup>5</sup>
ESSFvvp	ESSFvvp or AT-Exvp	2006	alpine/parkland – no site series
ESSFvww	ESSFv2	2006	ESSFv2 <sup>5</sup>
IDFdc	IDFdk2	2006	IDFdk2

Current BGC unit	Historic BGC unit	Date name changed	BGC Unit to use for tree species selection guidelines, stocking standards and SIBEC estimates <sup>1</sup>
IDFdk1			IDFdk1
IDFdk2			IDFdk2
IDFdk3			IDFdk3 <sup>2</sup>
IDFww1	IDFww	2006	IDFww <sup>3</sup>
IDFxc	IDFxh2	2006	IDFxh2
IDFxh2			IDFxh2
IDFxh2a			Grassland
IDFwx			IDFwx <sup>2</sup>
IMAun	AT	2006	alpine – no site series
MSdc1	MSdc	2006	MSdc
MSdc3	MSdc	2006	MSdc
MSdm2			MSdm2
MSmw2	MSun	2006	MSun – no described site series
MSxk3	MSxk	2006	MSxk
MSxv			MSxv <sup>2</sup>
PPxh2			PPxh2

<sup>1</sup>Please refer to "Reference Guide for FDP Stocking Standards (updated Nov. 26, 2010) available at: [http://www.for.gov.bc.ca/hfp/silviculture/stocking\\_stds.htm](http://www.for.gov.bc.ca/hfp/silviculture/stocking_stds.htm) and "SISU by BGC Unit Report" for SIBEC estimates at [www.for.gov.bc.ca/hre/sibec](http://www.for.gov.bc.ca/hre/sibec). These BGC units, unless otherwise noted, are described in "A Guide to Site Identification and Interpretation for the Kamloops Forest Region LMH 23" – Lloyd *et al.* 1990. Available at: <http://www.for.gov.bc.ca/hre/becweb/resources/classificationreports/regional/kaguides.html>

<sup>2</sup>This BGC unit is described in "A Field Guide for Site Identification and Interpretation for the Cariboo Forest Region" Land Management Handbook 39 (1997) Available at: <http://www.for.gov.bc.ca/hfd/pubs/Docs/Lmh/Lmh39.htm>

<sup>3</sup>This BGC unit is described in "A Field Guide for Site Identification and Interpretation for the Vancouver Forest Region" Land Management Handbook 28 (1994) Available at <http://www.for.gov.bc.ca/hfd/pubs/Docs/Lmh/Lmh28.htm>

<sup>4</sup>These BGC units will likely be published in a 2012 or 2013 supplement to the Cariboo Field Guide LMH 39.

<sup>5</sup>This unit is described in a supplement to the Cariboo Field Guide (LMH 39) that was published in 2001 and is available at: <http://www.for.gov.bc.ca/hfd/pubs/Docs/Lmh/Lmh39-Sup1.pdf>

#### 4.2.2 Present and Anticipated Future Changes BEC Classification

During the 2011 field season, the draft BEC classification for the Lillooet District was field tested and classification gaps filled for missing or underrepresented site series. The forested classification framework was completed during the winter of 2011 and the classification (spring 2012) is undergoing a provincial correlation review. **A final published classification is anticipated in 2013 which will encompass the Lillooet TSA.**

Low-elevation BGC units that occur much more extensively in the Cariboo Region including the BGxh3, BGxw2, IDFdk3 and IDFwx will not be included in the Lillooet Field Guide. The IDFdk3 and IDFwx have already been described in the Cariboo Field Guide, LMH 39 (1997) and the BGxh3 and BGxw2 are expected to be published in 2012 or 2013 as a supplement to the 1997 Cariboo Field Guide LMH 39.

No significant changes are anticipated for the ESSFxv2 and MSxv, two BGC units that are much more extensive in the Cariboo Region. However, these two units will be included in the Lillooet Field Guide with modified descriptions based on the distribution and occurrence of site series within the Lillooet TSA.

The CWHms1 is very limited in the Lillooet TSA and is much more extensive in the South Coast Forest Region. It will not be included in the Lillooet Field Guide but it is anticipated that this unit will be included in a revision to the BEC classification of the South Coast Region ("Field Guide to the Dry South Coast Ecosystems") in the near future.

#### BGC Mapping

**The western portion of the PPxh2 which includes the area south of Ashcroft, down to Lytton and up to Lillooet will be assigned to a new BGC unit, the PPxw.** This new unit will better reflect the site classification for this geographic area. Major differences between the PPxh2 and PPxw include differences in the types of ecosystems found in the two areas, the occurrence of major indicator species such as rough

fescue, and differences in presence and occurrence of grasslands and open talus slopes between the two areas.

Other BGC mapping changes are not anticipated for the Lillooet Timber Supply Area other than minor changes to BGC boundaries based on field observations.

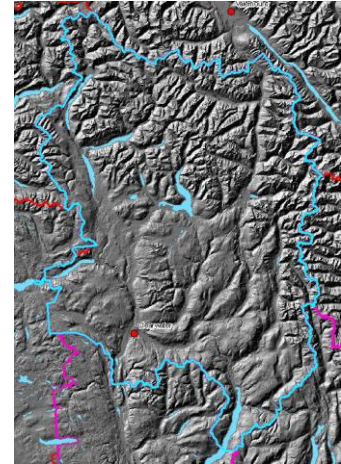
## 5.0 Changes to Thompson Rivers District (DTR)

### 5.1 Clearwater Area

#### 5.1.1 Historical Changes

In 2005, new BGC variants were identified (ESSFdc3, ICHdw3, MSdm3) and mapped in BGCv6 (2006) and **draft** BEC Classifications were produced in 2005 for all units excluding woodland, parkland, alpine units and units which were much more widespread in the Omineca Forest Region (ESSFmm1, ICHdk, SBSdh1) and the Cariboo Forest Region (ESSFwc3).

The following table summarises the link between past and current BGC units in the Clearwater portion of the Thompson Rivers District:



Current BGC unit	Historic BGC unit	Date name changed	BGC Unit to use for tree species selection guidelines, stocking standards and SIBEC estimates <sup>1</sup>
ESSFdc3	ESSFdc2	2006	ESSFdc2
ESSFdcp	ESSFdcp or AT-Edcp	2006	alpine/parkland – no site series
ESSFdcw	ESSFdc2	2006	ESSFdc2
ESSFmm1			ESSFmm1 <sup>2</sup>
ESSFmmp	ESSFmmp or AT-Emmp		alpine/parkland – no site series
ESSFmmw			ESSFmm1 <sup>2</sup>
ESSFvc			ESSFvc
ESSFvcp	ESSFvcp or AT-Evcp	2006	alpine/parkland – no site series
ESSFvcw	ESSFvv	2006	ESSFvv
ESSFwc2			ESSFwc2
ESSFwc2w			ESSFwc2
ESSFwc3			ESSFwc3 <sup>3</sup>
ESSFwcp	ESSFwcp or AT-Ewcp	2006	alpine/parkland – no site series
ESSFwcw	ESSFwc2	2006	ESSFwc2
ICHdk			ICHdk <sup>3</sup>
ICHdw3	ICHmw3	2006	ICHmw3
ICHmk2			ICHmk2
ICHmw3			ICHmw3
ICHvk1			ICHvk1
ICHvk1c			ICHvk1
ICHwk1			ICHwk1
ICHwk1			ICHwk1
IDFmw2			IDFmw2
IDFmw2b			IDFmw2

Current BGC unit	Historic BGC unit	Date name changed	BGC Unit to use for tree species selection guidelines, stocking standards and SIBEC estimates <sup>1</sup>
IMAun	ATun or ATunp	2006	alpine – no site series
MSdm3	MSdm2	2006	MSdm2
SBSdh1			SBSdh1 <sup>3</sup>
SBSmm			SBSmm

<sup>1</sup>Please refer to "Reference Guide for FDP Stocking Standards (updated Nov. 26, 2010) available at: [http://www.for.gov.bc.ca/hfp/silviculture/stocking\\_stds.htm](http://www.for.gov.bc.ca/hfp/silviculture/stocking_stds.htm) and "SISU by BGC Unit Report" for SIBEC estimates at [www.for.gov.bc.ca/hre/sibec](http://www.for.gov.bc.ca/hre/sibec). These BGC units, unless otherwise noted, are described in "A Guide to Site Identification and Interpretation for the Kamloops Forest Region LMH 23" – Lloyd *et al.* 1990. Available at: <http://www.for.gov.bc.ca/hre/becweb/resources/classificationreports/regional/ka-guides.html>

<sup>2</sup>Contact the Omineca Regional BEC Ecologist, Bruce Rogers ([Bruce.Rogers@gov.bc.ca](mailto:Bruce.Rogers@gov.bc.ca) 250-565-4440) regarding BEC descriptions, stocking standards and species selection guidelines for this unit.

<sup>3</sup>This BGC unit is described in "A Field Guide for Site Identification and Interpretation for the Cariboo Forest Region" Land Management Handbook 39 (1997) Available at: <http://www.for.gov.bc.ca/hfd/pubs/Docs/Lmh/Lmh39.htm>

## 5.1.2 Present and Anticipated Future Changes BEC Classification

During the 2011 field season, the draft BEC classification for drybelt units within the Clearwater area was field tested and classification gaps filled for missing or underrepresented site series. The drybelt forested classification framework was completed during the winter of 2011 and the classification (spring 2012) is undergoing a provincial correlation review. **A final classification is anticipated in 2013 which will encompass the Merritt District and the drybelt portion of the Thompson Rivers and Okanagan-Shuswap Districts.** Two volumes will be published in 2013 or 2014 (depending on resources) that encompass:

- Volume 1: Low-elevation units (BG, PP and IDF Zones)
- Volume 2: High-elevation units (MS and ESSF Zones)

BGC units that occur much more extensively in the Omineca (ESSFmm1, ICHdk, SBSdh1) and Cariboo Regions (ESSFwc3) will not be included in the proposed guides. It is expected that the Omineca units will be published in the near future in a field guide that encompasses the Mount Robson area.

During the 2012 field season, the draft classification for wetbelt units within the Thompson Rivers District will be field tested and classification gaps filled for missing or underrepresented site series. These units will likely be published in a field guide that encompasses the wetbelt portion of the Thompson Rivers District and the northern portion of the Selkirk District.

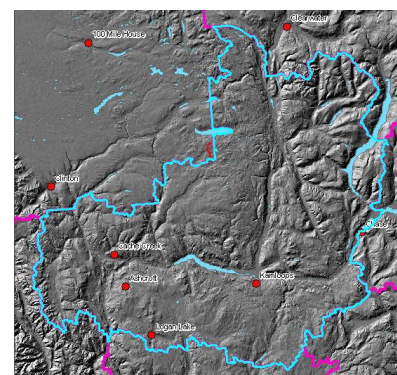
### BGC Mapping

BGC mapping changes are not anticipated for the Clearwater portion of the Thompson Rivers District other than minor changes to BGC boundaries based on field observations.

## 5.2 Changes to Thompson Rivers District (DTR) Kamloops Area

### 5.2.1 Historic Changes

In 2005, new BGC variants were identified (ESSFdc3, ESSFxc2/xc3, MSdm3, MSxk2/xk3) and mapped in BGCv6 (2006) and **draft** BEC Classifications were produced in 2005 for all units excluding woodland, parkland, alpine units and those units that were much more extensive in the Cariboo Region (SBPSmk, SBSdw1).





The following table summarises the link between past and current BGC units in the Kamloops portion of the Thompson Rivers District:

Current BGC unit	Historic BGC unit (Blanks are unchanged)	Date name changed	BGC Unit to use for tree species selection guidelines, stocking standards and SIBEC estimates <sup>1</sup>
BGxh2			BGxh2
BGxw1			BGxw1
ESSFdc3	ESSFdc2	2006	ESSFdc2
ESSFwc2			ESSFwc2
ESSFwcp	ESSFwcp or AT-Ewcp	2006	alpine/parkland – no site series
ESSFwcv	ESSFv or ESSFwc2	2006	ESSFwc2
ESSFxc2	ESSFxc	2006	ESSFxc
ESSFxc3	ESSFxc	2006	ESSFxc
ESSFxcv	ESSFxcv or AT-ESSFxcv	2006	alpine/parkland – no site series
ESSFxcw	ESSFxc	2006	ESSFxc
ICHmk2			ICHmk2
ICHmw3			ICHmw3
ICHwk1			ICHwk1
IDFdk1			IDFdk1
IDFdk1a			Grassland
IDFdk2			IDFdk2
IDFdk3			IDFdk3
IDFmw2			IDFmw2
IDFvh2			IDFvh2
IDFvh2a			Grassland
IDFvw			IDFvw <sup>2</sup>
IMAun	AT	2006	alpine – no site series
MSdm2			MSdm2
MSdm3	MSdm2	2006	MSdm2
MSdm3w	MSdm2	2006	MSdm2
MSxk2	MSxk	2006	MSxk
MSxk3	MSxk	2006	MSxk
PPvh2			PPvh2
PPvh2a			Grassland
SBPSmk			SBPSmk <sup>2</sup>

<sup>1</sup>Please refer to "Reference Guide for FDP Stocking Standards (updated Nov. 26, 2010) available at: [http://www.for.gov.bc.ca/hfp/silviculture/stocking\\_stds.htm](http://www.for.gov.bc.ca/hfp/silviculture/stocking_stds.htm) and "SISU by BGC Unit Report" for SIBEC estimates at [www.for.gov.bc.ca/hre/sibec](http://www.for.gov.bc.ca/hre/sibec). These BGC units, unless otherwise noted, are described in "A Guide to Site Identification and Interpretation for the Kamloops Forest Region LMH 23" – Lloyd *et al.* 1990. Available at: <http://www.for.gov.bc.ca/hre/decweb/resources/classificationreports/regional/kaguides.html>

<sup>2</sup> This BGC unit is described in "A Field Guide for Site Identification and Interpretation for the Cariboo Forest Region" Land Management Handbook 39 (1997) Available at: <http://www.for.gov.bc.ca/hfd/pubs/Docs/Lmh/Lmh39.htm>

## 5.2.2 Present and Anticipated Future Changes BEC Classification

During the 2011 field season, the draft BEC classification for drybelt units within the Kamloops area was field tested and classification gaps filled for missing or underrepresented site series. The drybelt forested classification framework was completed during the winter of 2011 and is undergoing (spring 2012) a provincial correlation review. **A final classification is anticipated in 2013 which will encompass the Merritt District and the drybelt portion of the Thompson Rivers and Okanagan-Shuswap Districts.** Two volumes will be published in 2013 or 2014 (depending on resources) that encompass:

- Volume 1: Low-elevation units (BG, PP and IDF Zones)
- Volume 2: High-elevation units (MS and ESSF Zones)

During the 2012 field season, the draft classification for wetbelt units within the Thompson Rivers District will be field tested and classification gaps filled for missing or underrepresented site series. These units will likely

be published in a field guide that encompasses the wetbelt portion of the Thompson Rivers District and the northern portion of the Selkirk District.

## BGC Mapping

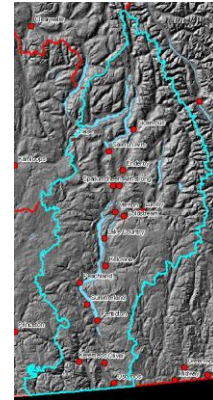
BGC mapping changes are not anticipated for the Kamloops portion of the Thompson Rivers District other than minor changes to BGC boundaries based on field observations.

## 6.0 Changes to Okanagan-Shuswap District (DOS)

### 6.1 Historic Changes

In 2005, new BGC variants were identified (ESSFdc3, ESSFxc1/xc2, MSdm3, MSxk1/xk2) and mapped in BGCv6 (2006) and **draft** BEC Classifications were produced in 2005 for all units excluding woodland, parkland, and alpine units.

The following table summarises the link between past and current BGC units in the Okanagan-Shuswap District:



Current BGC unit	Historic BGC unit (Blanks are unchanged)	Date name changed	BGC Unit to use for tree species selection guidelines, stocking standards and SIBEC estimates <sup>1</sup>
BGxh1			BGxh1
ESSFdc1			ESSFdc1
ESSFdc2			ESSFdc2
ESSFdc3	ESSFdc2	2006	ESSFdc2
ESSFdcp	ESSFdcp or AT-Edcp	2006	alpine/parkland – no site series
ESSFdcw	ESSFdc1/2/3	2006	ESSFdc1/2/3
ESSFvc			ESSFvc
ESSFvcp	ESSFvcp or AT-vcp	2006	alpine/parkland – no site series
ESSFvcw	ESSFvv	2006	ESSFvv
ESSFwc1			ESSFwc1
ESSFwc2			ESSFwc2
ESSFwc4			ESSFwc4
ESSFwcp	ESSFwcp or AT-wcp	2006	alpine/parkland – no site series
ESSFwcpw	ESSFwc2	2006	ESSFwc2/3/4
ESSFxc1	ESSFxc	2006	ESSFxc
ESSFxc2	ESSFxc	2006	ESSFxc
ESSFxcp	ESSFxcp or AT-xcp	2006	alpine/parkland – no site series
ESSFxcw	ESSFxc	2006	ESSFxc
ICHmk1			ICHmk1
ICHmk2			ICHmk2
ICHmw2			ICHmw2
ICHmw3			ICHmw3
ICHvk1			ICHvk1
ICHwk1			ICHwk1
ICHwk1c			ICHwk1
IDFdk1			IDFdk1
IDFdk1a			Grassland
IDFdk1b			IDFdk1
IDFdk2			IDFdk2
IDFdk2b			IDFdk2
IDFdm1			IDFdm1
IDFmw1			IDFmw1
IDFmw2			IDFmw2
IDFxh1			IDFxh1

Current BGC unit	Historic BGC unit (Blanks are unchanged)	Date name changed	BGC Unit to use for tree species selection guidelines, stocking standards and SIBEC estimates <sup>1</sup>
IDFxh1a			IDFxh1a
IDFxh2			IDFxh2
DIFxh2a			Grassland
IMAun	AT	2006	alpine – no site series
MSdm1			MSdm1
MSdm2			MSdm2
MSdm3	MSdm2	2006	MSdm2
MSxk1	MSxk	2006	MSxk
MSxk2	MSxk	2006	MSxk
PPxh1			PPxh1
PPxh1a			Grassland
PPxh2			PPxh2

<sup>1</sup>Please refer to "Reference Guide for FDP Stocking Standards (updated Nov. 26, 2010) available at: [http://www.for.gov.bc.ca/hfp/silviculture/stocking\\_stds.htm](http://www.for.gov.bc.ca/hfp/silviculture/stocking_stds.htm) and "SISU by BGC Unit Report" for SIBEC estimates at [www.for.gov.bc.ca/hre/sibec](http://www.for.gov.bc.ca/hre/sibec). These BGC units, unless otherwise noted, are described in "A Guide to Site Identification and Interpretation for the Kamloops Forest Region LMH 23" – Lloyd *et al.* 1990. Available at: <http://www.for.gov.bc.ca/hre/becweb/resources/classificationreports/regional/kaguides.html>

## 6.2 Present and Anticipated Future Changes

### 6.2.1 BEC Classification

During the 2011 field season, the draft BEC classification for drybelt units within the Okanagan-Shuswap District was field tested and classification gaps filled for missing or underrepresented site series. The drybelt forested classification framework was completed during the winter of 2011 and is undergoing (spring 2012) a provincial correlation review. **A final classification is anticipated in 2013 which will encompass the Merritt District and the drybelt portion of the Thompson Rivers and Okanagan-Shuswap Districts.** Two volumes will be published in 2013 or 2014 (depending on resources) that encompass:

- Volume 1: Low-elevation units (BG, PP and IDF Zones)
- Volume 2: High-elevation units (MS and ESSF Zones)

During the 2012 field season, the draft classification for wetbelt units within the Okanagan-Shuswap District will be field tested and classification gaps filled for missing or underrepresented site series. These units will likely be published in a field guide that encompasses the wetbelt portion of the Thompson Rivers District and the adjacent wetbelt portion of the Selkirk District. Additional work will also include:

#### ICHmw2

The ICHmw2 unit has been extensively revised within the Selkirk Forest District and many areas that were once mapped as ICHmw2 are now assigned to new or other units. These changes have had an impact on the BGC mapping in the Okanagan-Shuswap District and it is anticipated that low-elevation portions of the ICHmw2 that are mapped above the drier IDfwm1, will likely be assigned to a new ICH unit with its own site series classification. The location and extent of this new unit will be determined this summer with additional field work.

#### ICHmk1

Extensive BGC mapping in the Kettle Valley area of the Selkirk Forest District has resulted in changes to the extent to which ICHmk1 is mapped in the area. It is likely that a portion of the ICHmk1 unit that lies within the Okanagan-Shuswap area in the Monashee Pass will be assigned to a new ESSF unit that is much more extensive in the Selkirk District.

#### ESSFdc1/dc2

The ESSFdc1 concept and distribution has shifted resulting from changes to BGC mapping in the Selkirk District (Arrow TSA) where areas formerly mapped as ESSFwc4 will be remapped as ESSFdc1. This has resulted in a shift in the distribution of the ESSFdc1 in the Okanagan-Shuswap District. Much of the ESSFdc1 currently

mapped in the Thompson/Okanagan Region will be combined with the ESSFdc2 except for areas immediately along the eastern border of the Okanagan-Shuswap District.

### **ESSFwc1**

In the Monashee Pass, a small portion of the Okanagan-Shuswap District is mapped as ESSFwc1, a BGC unit that is much more extensive in the Selkirk District. The concept and distribution of this unit has been changed and a new unit has been created in the Selkirk District, tentatively called the ESSFdw, which will likely replace a portion of the ESSFwc1 in the Monashee Pass. This new unit reflects a drier unit in comparison to the revised concept for the ESSFmw1.

### **6.2.2 BGC Mapping**

With the release of BGC ver 8 BGC (Feb 2012), small changes were made to the BGC line work near Coldwater and Isintok Lake. As mentioned above, extensive BGC mapping revisions are underway in the Selkirk Forest District in some of the BGC units shared with the Okanagan-Shuswap District. These changes will not be incorporated into the official BGC map until the associated guide materials are ready for publication.