

THORPE HALL

BARNARD CASTLE, COUNTY DURHAM





The Estate

THORPE HALL

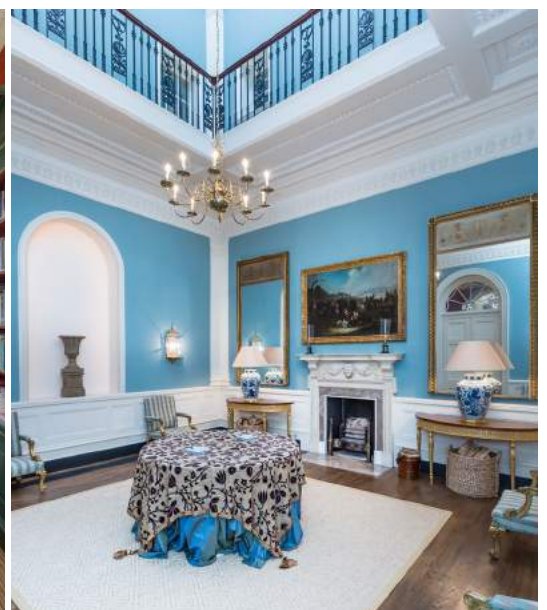


Welcome To Thorpe Hall

An historical small country estate with an impeccable pedigree. Restored and beautifully decorated under the direct supervision of the current owners with the assistance of Interior Designer Mark Gillette, the result is a handsome, modern country house where 21st century craftsmanship is a match for the original 18th century work. The gardens were landscaped under the direction of leading garden designer Arne Maynard and the total estate extends to approximately 45 acres.

The origins of Thorpe Hall go back to the 13th Century where a peel tower was erected by the Wycliffes, from which the current house evolved. The Georgian front was built in about 1740 and is typical of the Palladian architecture that was popular in the area at the time.

The interiors have been remodelled and notably the inner has been transformed to an impressive reception room with a lantern light, neoclassical Adamesque plasterwork, a delicate wrought-iron balustrade and a fireplace framed in marble with a carved mantel.





The Property

THORPE HALL

Classical Georgian Palladian Architecture

The principal rooms were returned to their original purpose, namely the drawing room, dining room and library, offering excellent space for entertaining and family life. In addition there is a smaller family dining room and pretty sitting room, with exceptional original features including fine Georgian cornicing and panelling.

The 18th century kitchen has been brought back to its original role, but with a keen eye on modern family life with a large dining table to one side. The works have been principally carried out by local craftsmen, notably the decorative plaster work by Steads of Bradford, joinery by Houghtons of York and wrought iron work by Brian Russell of Little Newton Forge.

The bedrooms are all individually decorated to a wonderful standard using appropriate colour and design. The owners have worked with the original rooms avoiding any partition walls compromising the original proportions.

The Master bedroom suite is impressive, overlooking the gardens onto traditional farmland. There is a dressing room that leads to the en suite bathroom. Adjacent is the gentleman's dressing room beautifully fitted with mahogany cupboards and shelves which leads to a shower room.

Gardens & Grounds

The beautifully designed gardens have been laid out by the world-renowned Arne Maynard. By creating a series of rooms, the gardens give interest throughout the year. Furthermore the formal gardens can be appreciated and enjoyed from either a window in the house or from a stroll among the parterres and avenues. Terracing around the house has created excellent spaces for summer entertaining. The kitchen garden has been designed to offer an abundance of produce throughout the year and also benefits from a large greenhouse. The park like grounds protect the house and lend privacy and security to this wonderful home.

As befits an estate of this standard, there are numerous outbuildings, cottages and garaging. Close to the house are three cottages and a studio flat that would work well for staff and or dependants. Further land (approximately 38 acres) and cottages (two) are available by separate negotiation. There is significant garaging and kennels along with an office suite where there is a meeting room, office, kitchen and WC. Separate gym with shower and cloakroom.







Wind Turbine

NOTE - Reproduced from the Ordnance Survey Map with the permission of the Controller of H.M. Stationery Office.
 © Crown copyright licence number 10002424 Savills (UK) Limited
 NOTE - Published for the purposes of identification only and although believed to be correct its accuracy is not guaranteed.
 MCL: 26048/THORPE HALL 2 2019 Date: 23/04/2019
 The Cartographic & Design Team, Wessex House, Wimborne, Dorset, BH21 1PB
 Tel: (01202) 856600

17.992ha
 44.46ac



Pond

Pond

Drain

Sinks

Issues

GP

Greys Jones

Thorpe Hall Cottages

Thorpe

Stable Cottage

Woodside Cottage

Stall Cottage

Pp

Chapel House

Thorpe Hall



DRAFT

NOT TO SCALE

The beautifully
designed gardens
have been laid out by
the world-renowned
Arne Maynard.



The Location

THORPE HALL



Come And Explore The South Bank Of The River Tees

Thorpe Hall sits on the border between two historic counties, once Yorkshire and now Co Durham, on the south bank of the River Tees.

It is close (approximately 5 miles away) to Barnard Castle an historic market town, named after the 12th Century castle around which it grew up. The renowned Bowes Museum (a jewel in the heart of beautiful Teesdale) is approximately 5 miles away and is home to internationally significant collections of fine and decorative arts.

Neighbouring villages harbour the Oak Tree pub in Hutton Magna, the Bridgewater Arms in Winston and the Michelin starred ** restaurant The Raby Hunt Inn is ten miles away.

Darlington (mainline East Coast direct to London) is approximately 14 miles

Newcastle International Airport (connections to direct worldwide flights) is approximately 50 miles
York (approx.50 miles)

Independent Schools

Barnard Castle Independent Co-educational
Interdenominational
Day and boarding 4 yrs – 18 yrs

Sedbergh (approximately 40 miles)
Co-educational independent boarding
Sedbergh LA10 5HG

Aysgarth (approximately 20 miles)
Boys only prep school

Ampleforth College (approx. 50 miles)
International co-educational Catholic
York, YO62 4ER

Sporting Opportunity

The current owners have enjoyed shooting let from the neighbouring Rokeby Estate. The Rokeby Estate also owns the fishing rights for the local section of the River Tees, and it may be possible to take “a rod”, subject to availability. Some of the most spectacular grouse moors are nearby on the North Pennines (9 miles) and Yorkshire Dale National Park (10.5 miles). There is a racecourse at Catterick (15.5 miles) with over 28 meetings for 2018, both National Hunt and Flat.







Lindsay Cuthill

HEAD OF COUNTRY DEPARTMENT

SAVILLS

PHONE

+44 (0) 20 7016 3820

EMAIL

lcuthill@savills.com

Ben Pridden

HEAD OF YORK RESIDENTIAL

SAVILLS

PHONE

+44 (0) 1904 617 821

EMAIL

bpridden@savills.com

