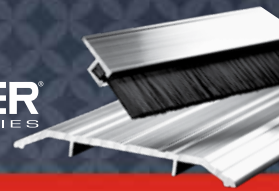


# Thresholds & Weatherstripping



Hager Companies offers a complete line of thresholds & weatherstripping products for virtually any type of door application. What's more, each meets or exceeds ANSI-grade quality, durability, and performance levels. For enhanced levels of safety and security, we also offer intumescent products for positive pressure solutions, including edge sealing and smoke control systems. All of which make Hager threshold, weatherstripping, and door bottom products an excellent choice for standard or custom applications in schools, hospitals, office buildings, and more.

## Table of Contents

|                           |   |
|---------------------------|---|
| General Information ..... | 2 |
|---------------------------|---|

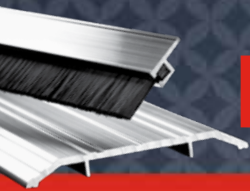
### Thresholds

|                                  |    |
|----------------------------------|----|
| Saddle .....                     | 6  |
| Thermal Barrier Saddle .....     | 8  |
| Half Saddle .....                | 9  |
| Elevator and Bumper Strips ..... | 10 |
| Residential and Carpet.....      | 11 |
| Bumpers and ADA Ramps.....       | 12 |
| Floor Plate Assembly .....       | 13 |
| Panic .....                      | 14 |
| Thermal Barrier Panic .....      | 15 |
| Interlocking .....               | 16 |
| Abrasive Cast Aluminum .....     | 17 |
| Floor Closer .....               | 18 |
| Cover Plate and Anchors .....    | 19 |
| Vinyl Thresholds .....           | 19 |

### Weatherstripping

|   |    |
|---|----|
| Interlocking/Overhead Drip Guards ..... | 20 |
| Press-On Gasketing .....                | 21 |
| Door Bottoms .....                      | 23 |
| Automatic Door Bottoms .....            | 25 |
| Door Bottom Sweeps.....                 | 26 |
| Adjustable Jamb Weatherstripping .....  | 29 |
| Jamb Weatherstripping.....              | 30 |
| Astragals/Meeting Stiles .....          | 35 |





## GENERAL INFORMATION

### PRODUCT PRESENTATION

Dimensions on stainless steel extrusions may differ slightly than those detailed. Questions regarding any dimensions should be directed to Hager Companies Customer Service.

Drawings or illustrations used in the catalog are subject to change without notice. Questions on any dimensions should be obtained by contacting Hager Companies Customer Service.

### FABRICATION OPTIONS

- Bevel one edge of threshold
- Rip one edge width of threshold
- L-notch both ends of threshold
- U-notch both ends of threshold
- Tack weld one line of threshold
- Pan for water return of threshold
- Sure Step Non-Slip Abrasive Coating – A rugged, durable coating that can be applied to all Hager Companies' metal thresholds. Ideal for thresholds being used in wet, oily or corrosive environments.

### MATERIALS & FINISHES

#### Metals

All aluminum extrusions are of alloy 6063-T5.

For stock finishes, refer to the code listed below each individual item throughout the catalog. Please inquire for the availability on nonstock finishes.

- MIL** - mill finish aluminum
- CAL** - cast aluminum
- GYP** - primed steel grey
- DBA** - dark bronze anodized aluminum
- SCA** - Hager Sure Step on aluminum
- 32D** - stainless steel (non-extruded)
- GLD** - gold anodized aluminum
- CLR** - clear anodized aluminum
- LBA** - light bronze anodized aluminum
- WHP** - white paint on aluminum
- USP** - prime coat

#### Gaskets

Gasketing is available in a wide variety of materials. Vinyl is an economical choice and remains flexible down to -40°F (-40°C). EPDM gasketing is supplied both as a solid (dense) and as a closed cell sponge with a tough outer skin. It remains flexible down to -50°F (-49°C). Silicone gasketing provides the best resistance to cold by remaining flexible down to -70°F (-57°C). Refer to the price book for a list of available replacement gaskets. Gasketing codes are listed below.

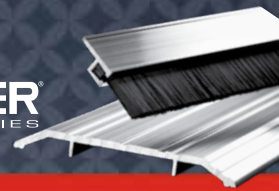
- B** - nylon brush
- N** - neoprene
- S** - silicone
- V** - vinyl
- W** - pile (thread may be removed to allow expansion)

### ORDERING INFORMATION

When ordering, please specify by product number, length, quantity, finish and fasteners required. Thresholds & weatherstripping are fabricated in standard sizes with 1/2" (12.7 mm) extra on thresholds 48" (1219.2 mm) and under. Anodized thresholds are fabricated in standard sizes with 1/4" (6.35 mm) extra on thresholds 48" (1219.2 mm) and under. Thresholds over 48" (1219.2 mm) are supplied with 1" (25 mm) extra length for fitting. Anodized thresholds over 48" (1219.2 mm) are fabricated in standard sizes with 3/4" (19.05 mm) extra length for fitting. Exact lengths are available upon request (specify CTEL).

Example: 891S V 36 x 84 MIL

| <u>Item #</u> | <u>Gasketing</u> | <u>Size</u>                   | <u>Finish</u>                       |
|---------------|------------------|-------------------------------|-------------------------------------|
| 516S          | W-pile           | 36" (914 mm)                  | MIL - mill finish aluminum          |
| 599S          | V-vinyl          | 48" (1219 mm)                 | DBA - dark bronze anodized aluminum |
| 750S          | S-silicone       | 36" (914 mm)                  | 32D - matte stainless steel         |
| 870S          | N-neoprene       | 36" x 84" (914 mm x 2133 mm)  | CLR - clear anodized aluminum       |
| 882S          | B-nylon Brush    | 48" x 96" (1219 mm x 2438 mm) | OOO - gasket only                   |



## GENERAL INFORMATION

### FASTENERS

#### Standard

All products are furnished with appropriate fasteners as listed, except where noted. Most thresholds are furnished with mounting holes and #10 x 1-1/2" flat head sheet metal screws. Most weatherstripping products are furnished with slotted holes and #6 x 5/8" pan head sheet metal screws.

#### Optional

##### Thresholds

- #10 wood screws and plastic anchors
- #10 wood screws and lead anchors
- #10 machine screws and lead anchors
- #10 stainless steel wood screws
- #10 stainless steel wood screws and plastic anchors
- #10 stainless steel wood and lead anchors
- 1/4-20 stainless steel machine screws and lead anchors
- 1/4-20 machine screws and lead anchors
- 1/4-20 x 2" flat head sleeve anchor
- #10 torx sheet metal screws
- #10-24 x 1-1/2" stainless steel torx machine screw with lead anchor
- #10-stainless steel spanner head wood screw with lead anchor
- Cast-on anchors (cast products only)
- Tap-con type (1/4" x 1-3/4")

##### Weatherstripping

- #6 x 5/8" pan-head stainless steel screws
- #6 x 5/8" self-drilling (TEK) screws (Steel-zinc plated)
- #6 x 5/8" pan-head torx sheet metal screws
- #6 x 5/8" stainless steel self-drilling (TEK) screws
- 1/4 - 20 x 1-1/4" sex bolts
- Two-way self-adhesive tape

### GENERAL INSTALLATION INSTRUCTIONS FOR PRESS-ON PRODUCTS:

- Product returnable within first 6 months after purchase date
- Installation should take place after construction has been completed, and final cleaning has taken place
- The frame should be cleaned; isopropyl alcohol is recommended
- Not recommended for unsealed or porous applications
- Do not store these products in extreme heat/cold or for prolonged periods of time

### CERTIFICATIONS



#### Handicap Accessibility

Products denoted by this symbol are designed for applications where handicap accessibility is specified. These products are no greater than 1/2" (12.7 mm) in height and have no more than 1/4" (6.3 mm) vertical rise or with slope proportions no greater than 1:2 slope. Offset floor conditions greater than 1/2" (12.7 mm) require a 1:12 slope.



#### Air Infiltration

Products denoted by this symbol have been tested with air/smoke infiltration, all within the (0.500 cfm/sq. ft. for double doors and .300 cfm for single doors) maximum allowable leakage at a pressure of a 25 mph wind (1.56 psf). The tests were conducted in accordance with ASTM test procedures and meet ASTM: E283.



#### Sound Tested

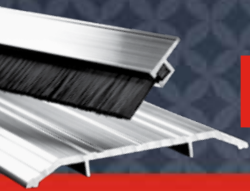
Products denoted by this symbol have been sound tested and received the appropriate STC rating. The tests were conducted in accordance with ASTM test procedures and meet ASTM: E90 & ASTM: E413.

| STC Rating Static Door | STC Rating Operable Door | Perimeter Seal | Door Bottom | Corner Pad | Threshold |
|------------------------|--------------------------|----------------|-------------|------------|-----------|
| 49                     | 41                       | 737 & 866S     | 743S        | 709        | 417S      |
| 49                     | 37                       | 738 & 737      | 743S        | 709        | 417S      |
| 44                     | 40                       | 726            | 743S        |            | 520S      |
| 42                     | 40                       | 738 & 737      | 774S        | 709        | 417S      |
| 42                     | 40                       | 737 & 866S     | 774S        | 709        | 417S      |
| 41                     | 39                       | 726(2)         | 743S        |            | 520S      |
| 36                     | 35                       | 738 & 737      | 774S        | 709        | 417S      |
| 36                     | 35                       | 726 & 736      | 774S        | 709        | 417S      |



#### BHMA Certified

BHMA Certification Program was developed as a means for manufacturers of builders hardware to indicate compliance with American National Standards sponsored by BHMA. Participating manufacturers certify compliance with the standards based on a continuing program of passing the prescribed tests.



**Underwriter’s Laboratories**

Products denoted by this symbol are classified and labeled by Underwriter’s Laboratories, Inc.® as gasket material for use on listed steel frames and/or classified swinging type fire doors of the hollow metal or steel covered composite type rated up to 3 hours, or wood core fire doors rated up to 1-1/2 hours. Test results show these products do not adversely affect the fire resistance of the door or frame according to its UL rating. All products are regularly checked under a labeling and listing service. The clearance between the door and the frame and between the meeting edges of doors swinging in pairs shall be 1/8” ± 1/16” (3.18 mm ± 1.59 mm) for steel doors and shall not exceed 1/8” (3.2 mm) for wood doors.

- UL 10C (Positive Pressure) complies with IBC, NFPA 80 and NFPA 252 for hollow metal fire doors rated up to 3 hours and wood fire doors rated up to 90 minutes.
- UL 10B complies with NFPA 80 and NFPA 252 for hollow metal fire doors rated up to 3 hours and wood fire doors rated up to 90 minutes.

Notes: Ratings on some items may vary and are noted on the individual products. For a more complete look at classifications on individual products, please visit [www.ul.com/database](http://www.ul.com/database) and reference R13647.

**THE INTERNATIONAL BUILDING CODE (IBC)**

The International Building Code (IBC) requires swinging fire doors to be tested in accordance with ANSI/UL 10C or NFPA 252, with the neutral pressure level established at 40 inches or less above the sill. This causes “positive pressure” forces against the door assembly above 40 inches.

The result is hot gases and smoke leak out between the door and frame above this level, posing a serious threat to life-safety; and on wood doors rapidly deteriorating the integrity of the door edges, requiring either a built-in or supplemental “edge sealing system” to pass the test.

Fire door assemblies in corridors and smoke barrier walls are required to be smoke and draft control assemblies tested in accordance with UL1784 allowing a maximum air leakage of 3 cubic feet per minute per square foot of door opening at ambient temperature (75°F) and elevated temperature (400°F). These assemblies require the letter “S” on the fire rating label of the door indicating compliance “when listed or labeled gasketing is also installed.”



Fire doors are classified based upon their construction and edge sealing system requirements. Fire-rated gasketing is classified as follows:

- Category G** - Edge-sealing system
- Category H** - Smoke and draft control gasketing
- Category J** - Gaskets other than category G or H

**Fire Test - Category G**

Gaskets that are edge-sealing systems. Category “G” - edge-sealing systems are for use with fire doors requiring an edge seal to meet positive pressure code requirements. These systems are surface-applied to either the perimeter of the door frame or meeting edges of door pairs. Category “G” gaskets are usually intumescent material; this material will swell many times its original size during a fire and help contain the spread of fire by sealing the edges of the door.

**Fire Test - Category J**

Products that are positive pressure tested to determine that they do not contribute to flaming during a fire; they do not provide an edge-sealing system. Examples are gaskets used for sound, draft control or automatic door bottoms.

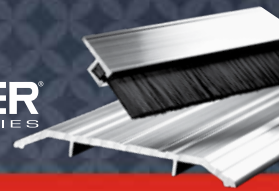
**Smoke and Draft Control Test - Category H**

This is a separate second test that does not involve fire. All gaskets being tested for smoke must initially be fire tested under the requirements of UL 10C and receive a category “G” or “J” rating before being smoke tested.

Below are some key phrases that indicate positive pressure requirements:

- IBC 2003 (and later) - International Building Code
- UL 10-C - Positive Pressure Fire Test
- ASTM E-2074-00 - Fire Test of Door Assemblies
- Shall meet positive pressure requirements
- Intumescent seals - imply positive pressure

The [www.iccsafe.org](http://www.iccsafe.org) web site of the International Code Council (ICC) has a map of code adoption by state. This site is frequently updated and by clicking on a state, you can see what codes they have adopted.



## GENERAL INFORMATION

### New and existing fire doors are classified/labeled by one of the following designation systems:

-  Hourly rating designation    
  Alphabetical letter designation    
  A combination of both

### Common Applications for Hager Positive Pressure Edge Sealing & Smoke Seal Systems



| Wall Rating | Door and Frame Rating       | Door Application and Use   | Door Types                   |                  | Fire Doors Edge Sealing System | Smoke Doors "S" Label Smoke Seal         | Fire & Smoke Doors Combination Seal |
|-------------|-----------------------------|--|------------------------------|------------------|--------------------------------|--|-------------------------------------|
| 4 Hr.       | 3 Hour (A Label) 180 Minute | Openings in fire walls and walls that divide a single building into fire areas | Hollow Metal<br>Hollow Metal | Pairs<br>Singles | —<br>—                         | 721, 726, 736, 737<br>721, 726, 736, 737 | —<br>—                              |



|       |                                |   |                |         |          |                    |                    |
|-------|--------------------------------|---|----------------|---------|----------|--------------------|--------------------|
| 2 Hr. | 1 1/2 Hour (B Label) 90 minute | Openings to stairwells and elevator shafts; vertical communication or egress through a building, including 2-hr. rated partitions providing horizontal fire separations | Wood Composite | Pairs   | 724, 729 | 721, 726, 736, 737 | 719, 720, 722, 734 |
|       |                                |   | Hollow Metal   | Pairs   | —        | 721, 726, 736, 737 | —                  |
|       |                                |   | Wood Composite | Singles | 724, 729 | 721, 726, 736, 737 | 719, 720, 722, 734 |
|       |                                |   | Hollow Metal   | Singles | —        | 721, 726, 736, 737 | —                  |



|       |                                |   |              |         |   |                    |   |
|-------|--------------------------------|---|--------------|---------|---|--------------------|---|
| 2 Hr. | 1 1/2 Hour (D Label) 90 minute | Opening where there is a chance of severe fire exposure from the exterior of the building | Hollow Metal | Pairs   | — | 721, 726, 736, 737 | — |
|       |                                |   | Hollow Metal | Singles | — | 721, 726, 736, 737 | — |



|       |                              |   |      |         |          |                    |                    |
|-------|------------------------------|---|------|---------|----------|--------------------|--------------------|
| 1 Hr. | *1 Hour (B Label) 60 Minutes | Doors that divide occupancies in a building (building less than 4 stories tall) | Wood | Pairs   | 724, 729 | 721, 726, 736, 737 | 719, 720, 722, 734 |
|       |                              |   | Wood | Singles | 724, 729 | 721, 726, 736, 737 | 719, 720, 722, 734 |

\*Currently rating only applies to wood doors.



|       |                              |   |              |         |   |                    |   |
|-------|------------------------------|---|--------------|---------|---|--------------------|---|
| 1 Hr. | 3/4 Hour (E Label) 45 Minute | Opening in an exterior wall with the potential to be exposed to moderate to light fire from the outside of the building | Hollow Metal | Pairs   | — | 721, 726, 736, 737 | — |
|       |                              |   | Hollow Metal | Singles | — | 721, 726, 736, 737 | — |



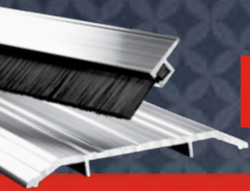
|       |                              |   |                |         |          |                    |                    |
|-------|------------------------------|---|----------------|---------|----------|--------------------|--------------------|
| 1 Hr. | 3/4 Hour (C Label) 45 Minute | Openings in walls or partitions between rooms and corridors | Wood Composite | Pairs   | 724, 729 | 721, 726, 736, 737 | 719, 720, 722, 734 |
|       |                              |   | Wood Composite | Singles | 724, 729 | 721, 726, 736, 737 | 719, 720, 722, 734 |



|       |                     |  |                    |         |          |                    |                    |
|-------|---------------------|--|--------------------|---------|----------|--------------------|--------------------|
| 1 Hr. | *1/3 Hour 20 Minute | Openings in corridors where smoke and draft control is required<br>*Does not have letter designation | Wood/Particle Core | Pairs   | 724, 729 | 721, 726, 736, 737 | 719, 720, 722, 734 |
|       |                     |  | Wood/Particle Core | Singles | 724, 729 | 721, 726, 736, 737 | 719, 720, 722, 734 |

\*All of the labels listed above have the capability of being both fire and smoke barrier openings. However, not all openings require a smoke label. Openings requiring smoke labels are detailed either by the fire authority having jurisdiction, local code, NFPA 101 or NFPA 5000.





**THRESHOLDS - SADDLE**

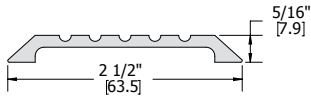
To effectively seal out the elements, use in conjunction with a door bottom, sweep, shoe, or bumper strip.

Fasteners: #10 x 1-1/2" sheet metal screws, other screw types and anchors available upon request

Options: Available with Sure Step Non-Slip Abrasive Coating

- Notes:
- MIL finish thresholds are supplied with zinc plated screws
  - Color anodized thresholds are supplied with screws plated to match
  - Stainless steel thresholds are supplied with stainless steel screws

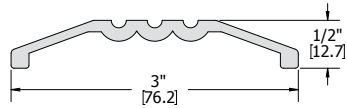
**401S**



Finishes: MIL, DBA, GLD

Certifications: **BHMA CERTIFIED**

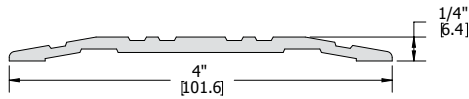
**402S**



Finishes: MIL, DBA, GLD

Certifications: **BHMA CERTIFIED**

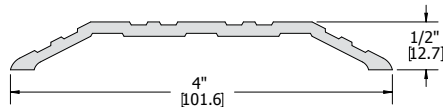
**403S**



Finishes: MIL, DBA, GLD

Certifications: **BHMA CERTIFIED**

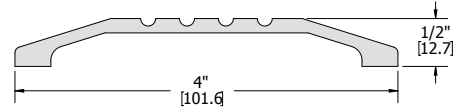
**404S**



Finishes: MIL, DBA, GLD

Certifications: **BHMA CERTIFIED**

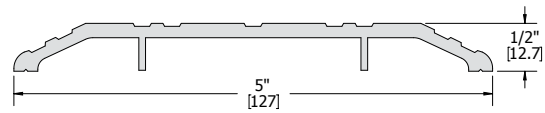
**410S**



Finishes: MIL, DBA, GLD

Certifications: **BHMA CERTIFIED**

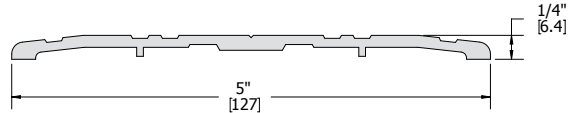
**412S**



Finishes: MIL, DBA, GLD

Certifications: **BHMA CERTIFIED**

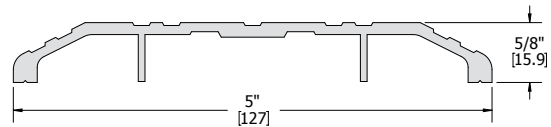
**413S**



Finishes: MIL, DBA, GLD, US32D

Certifications: **BHMA CERTIFIED**

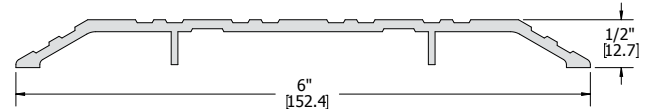
**414S**



Finishes: MIL, DBA, GLD

Certifications: **BHMA CERTIFIED**

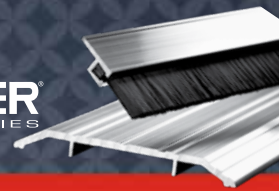
**415S**



Finishes: MIL, DBA, GLD

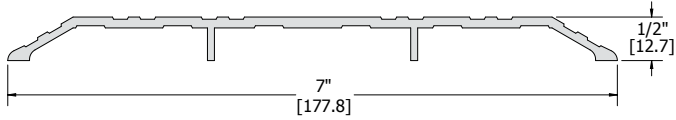
Certifications: **BHMA CERTIFIED**





## THRESHOLDS - SADDLE

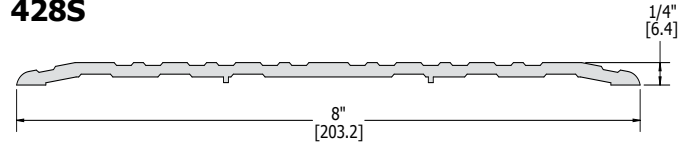
### 416S



Finishes:  
Certifications:



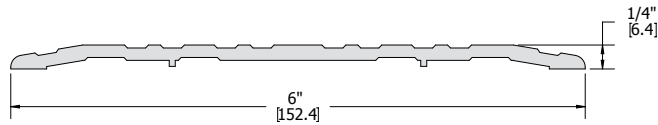
### 428S



Finishes:  
Certifications:



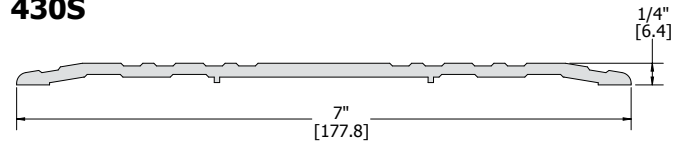
### 417S



Finishes:  
Certifications:



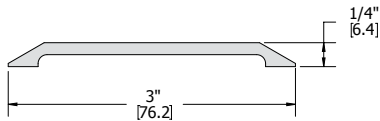
### 430S



Finishes:  
Certifications:



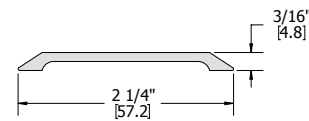
### 418S



Finishes:  
Certifications:



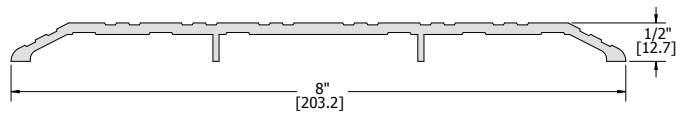
### 436S



Finishes:  
Certifications:



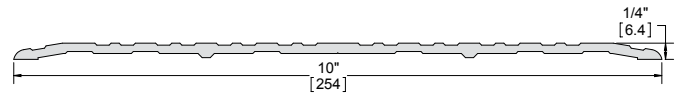
### 426S



Finishes:  
Certifications:



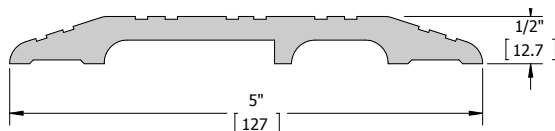
### 448S



Finishes:  
Certifications:



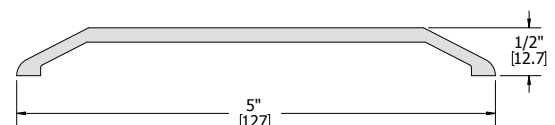
### 427S



Finishes:  
Certifications:

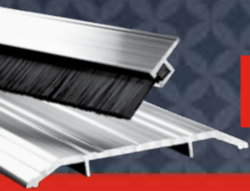


### 492S



Finishes:  
Certifications:





## THRESHOLDS - THERMAL BARRIER SADDLE

High strength thermal barrier is permanently bonded in place to block the transfer of heat or cold. To provide a seal, use in conjunction with a door bottom, sweep, shoe or bumper strip.

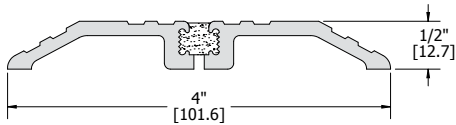
**Fasteners:** #10 x 1-1/2" sheet metal screws, other screw types and anchors available upon request

**Options:** Available with Sure Step non-slip abrasive coating

**Notes:**

- MIL finish thresholds are supplied with zinc plated screws
- Color anodized thresholds are supplied with screws plated to match

### 420S

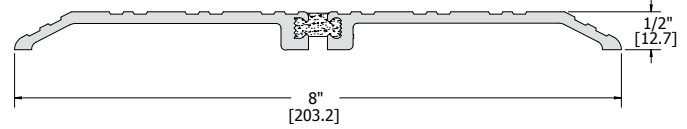


**Finishes:** MIL, DBA, GLD

**Certifications:**



### 424S

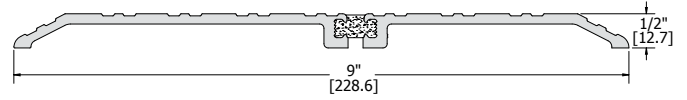


**Finishes:** MIL, DBA, GLD

**Certifications:**



### 451S

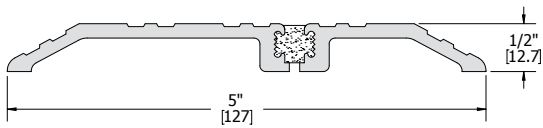


**Finishes:** MIL, DBA, GLD

**Certifications:**



### 421S

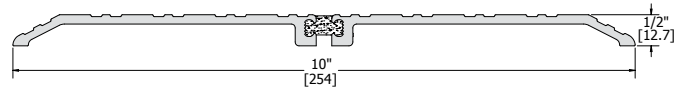


**Finishes:** MIL, DBA, GLD

**Certifications:**



### 452S

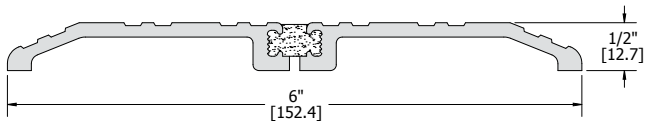


**Finishes:** MIL, DBA, GLD

**Certifications:**



### 422S

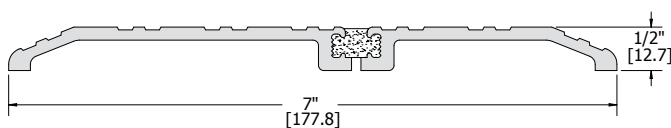


**Finishes:** MIL, DBA, GLD

**Certifications:**



### 423S

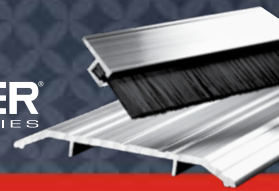


**Finishes:** MIL, DBA, GLD

**Certifications:**







## THRESHOLDS - HALF SADDLE

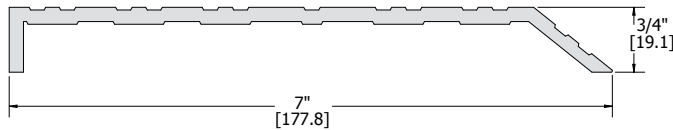
**Fasteners:** #10 x 1-1/2" sheet metal screws, other screw types and anchors available upon request

**Options:** Available with Sure Step non-slip abrasive coating

**Notes:**

- MIL finish thresholds are supplied with zinc plated screws
- Color anodized thresholds are supplied with screws plated to match

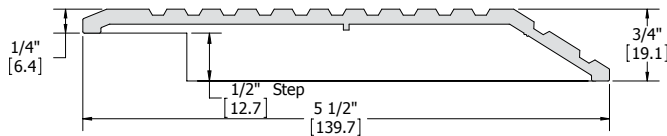
### 406S



**Finishes:** MIL, DBA, GLD

**Certifications:** 

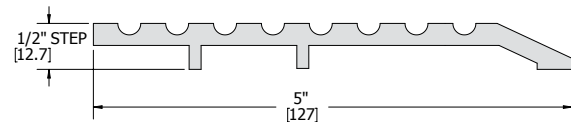
### 407S






**Finishes:** MIL, DBA, GLD

**Certifications:** 

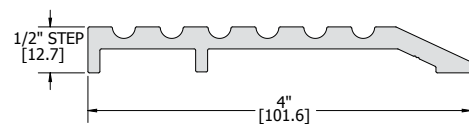
### 431S






**Finishes:** MIL, DBA, GLD

**Certifications:**   

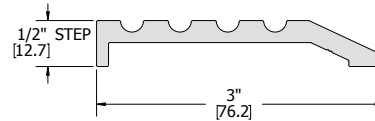
### 432S



**Finishes:** MIL, DBA, GLD

**Certifications:**   

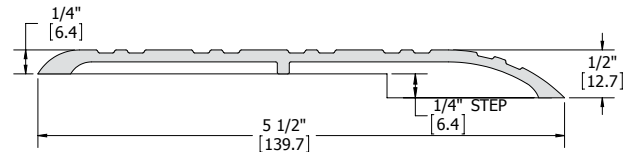
### 433S



**Finishes:** MIL, DBA, GLD

**Certifications:**   

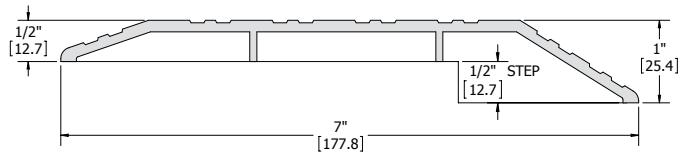
### 438S



**Finishes:** MIL, DBA

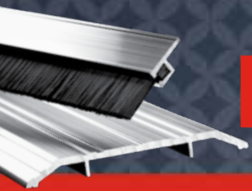
**Certifications:**   

### 572S



**Finishes:** MIL, DBA, GLD

**Certifications:** 

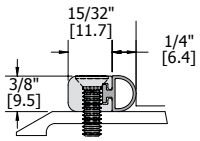


## THRESHOLDS - ELEVATOR AND BUMPER STRIPS

Use in conjunction with a threshold

Fasteners: #10 - 24 x 5/8" flat head self-tapping screws to attach bumper strip directly to an existing threshold

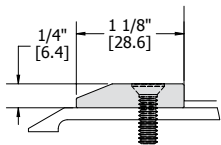
### 481S



Finishes: MIL, DBA, GLD  
 Insert: V, N, S, W  
 Certifications:

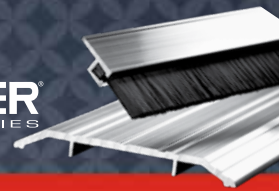


### 484S



Finishes: MIL, DBA, GLD  
 Certifications:

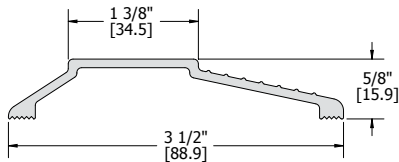




## THRESHOLDS - RESIDENTIAL

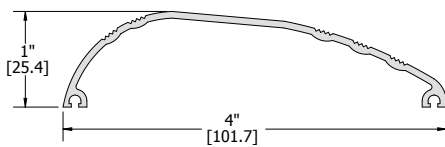
All thresholds appearing in this column are available with Sure Step Non-Slip Abrasive Coating.

### 408S



Finishes: MIL, DBA, GLD  
 Certifications: 

### 419S



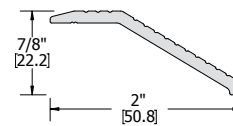
Finishes: MIL, DBA, GLD  
 Certifications: 

## THRESHOLDS - CARPET

Fasteners: #10 x 1-1/2" sheet metal screws, other screw types and anchors available upon request  
 Options: Available with Sure Step non-slip abrasive coating  
 Notes:
 

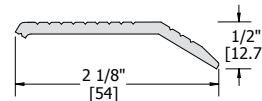
- MIL finish thresholds are supplied with zinc plated screws
- Color anodized thresholds are supplied with screws plated to match

### 503S



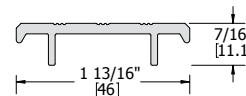
Finishes: MIL, DBA, GLD  
 Certifications: 



### 504S



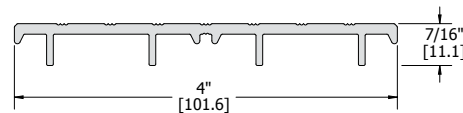
Finishes: MIL, DBA, GLD  
 Certifications: 

### 505S



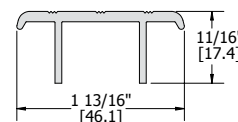
Finishes: MIL, DBA, GLD  
 Certifications:  

### 506S

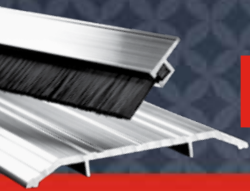


Finishes: MIL, DBA, GLD  
 Certifications:  

### 508S



Finishes: MIL, DBA, GLD  
 Certifications: 

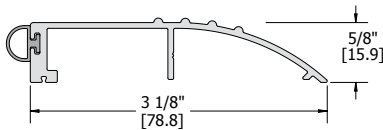


## THRESHOLDS - BUMPER

For use with outswinging doors to seal out the elements  
 Fasteners: #10 x 1-1/2" sheet metal screws, other screw types and anchors available upon request  
 Options: Available with Sure Step non-slip abrasive coating  
 Notes:
 

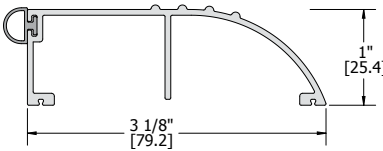
- MIL finish thresholds are supplied with zinc plated screws
- Color anodized thresholds are supplied with screws plated to match

### 434S



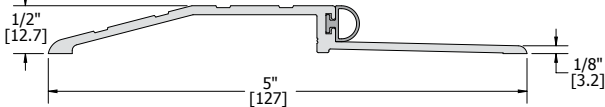
Finishes: MIL, DBA, GLD  
 Insert: V, N, S, W  
 Certifications:

### 435S



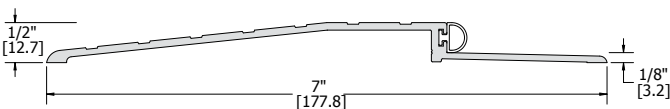
Finishes: MIL, DBA, GLD  
 Insert: V, N, S, W  
 Certifications:

### 477S



Finishes: MIL, DBA, GLD  
 Insert: V, N, S, W  
 Certifications:

### 478S



Finishes: MIL, DBA, GLD  
 Insert: V, N, S, W  
 Certifications:

## THRESHOLDS - ADA RAMP

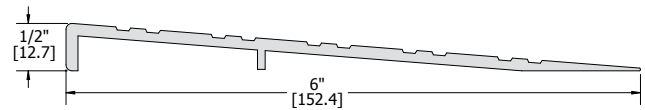
Ramp threshold that provides a 1:12 slope to meet the requirements of the Americans With Disabilities Act

Order: To create a ramp that is a combination of the 442S and 443S, order 444S

Fasteners: #10 x 1-1/2" Flat head wood screws  
 Options: Available with Sure Step non-slip abrasive coating  
 Notes:
 

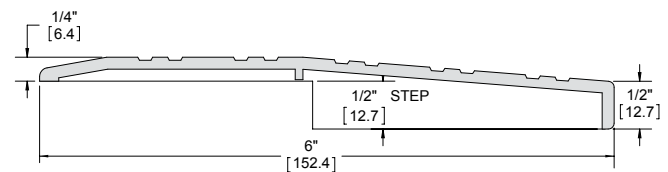
- MIL finish thresholds are supplied with zinc plated screws
- Color anodized thresholds are supplied with screws plated to match

### 442S



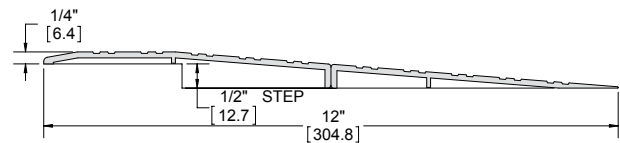
Finishes: MIL, DBA, GLD  
 Certifications:

### 443S

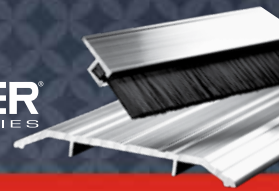


Finishes: MIL, DBA, GLD  
 Certifications:

### 444S



Finishes: MIL, DBA, GLD  
 Certifications:



## THRESHOLDS - FLOOR PLATE ASSEMBLY

Floor plate components for modular threshold system. Used primarily for extra wide door frames or to cover expansion joints or floor joists

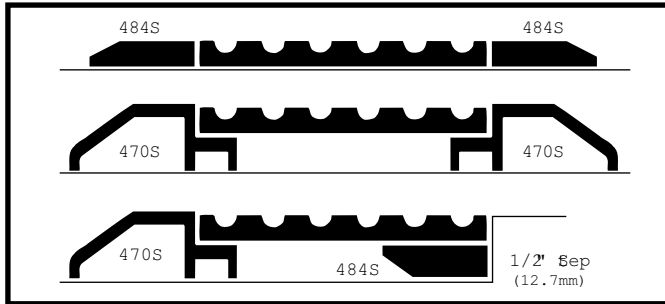
Fasteners: Plates and plate supports are furnished without holes and fasteners unless specified

Options:
 

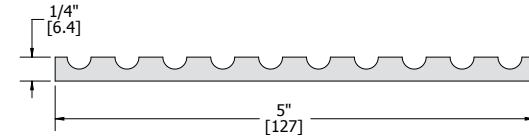
- Available with Sure Step non-slip abrasive coating
- Beveled Edges are available

Notes: Plates may be used fluted or smooth side up

### Typical Applications



### 455S

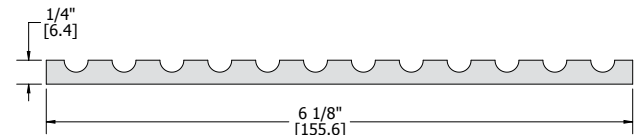


Finishes: MIL, DBA, GLD

Certifications:



### 460S

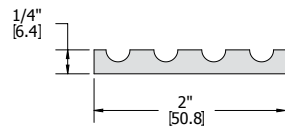


Finishes: MIL, DBA, GLD

Certifications:



### 440S

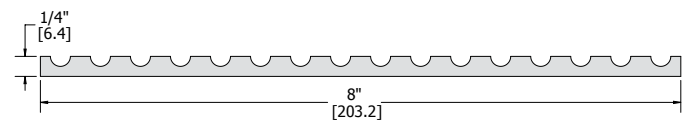


Finishes: MIL, DBA, GLD

Certifications:



### 465S

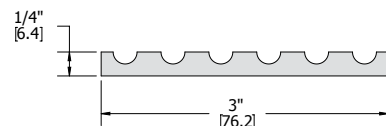


Finishes: MIL, DBA, GLD

Certifications:



### 445S

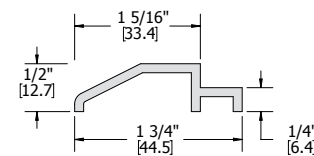


Finishes: MIL, DBA, GLD

Certifications:



### 470S

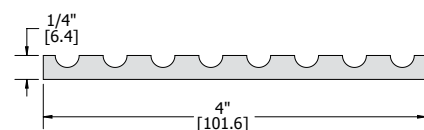


Finishes: MIL, DBA, GLD

Certifications:



### 450S

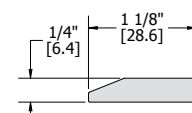


Finishes: MIL, DBA, GLD

Certifications:



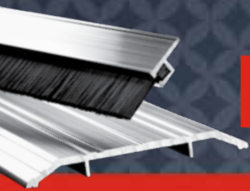
### 484S



Finishes: MIL, DBA, GLD

Certifications:

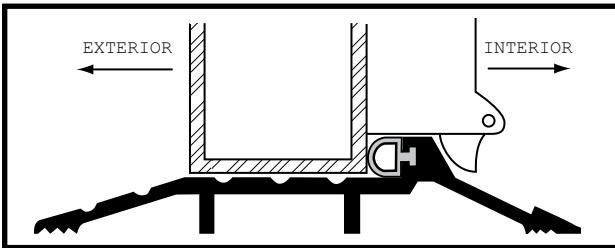




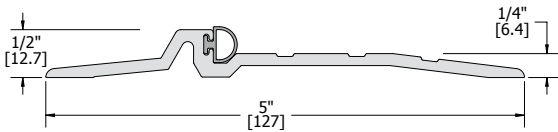
## THRESHOLDS - PANIC

- Use in conjunction with surface applied vertical rod exit device
- Fasteners: #10 x 1-1/2" flat head sheet metal screws, other screw types and anchors available upon request
- Options: Available with Sure Step non-slip abrasive coating
- Notes:
  - MIL finish thresholds are supplied with zinc plated screws
  - Color anodized thresholds are supplied with screws plated to match
  - Special under cuts may be required

### Typical Applications



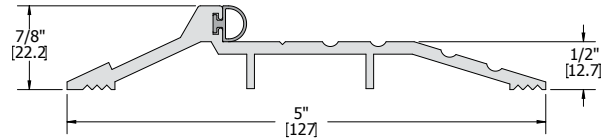
### 520S



- Finishes: MIL, DBA, GLD  
 Inserts: V, N, S, W  
 Door Undercut: Allow 3/8"



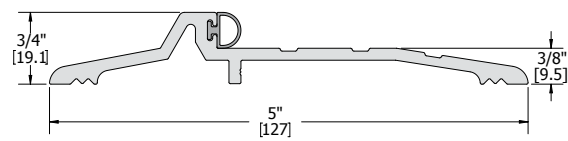
### 541S



- Finishes: MIL, DBA, GLD  
 Inserts: V, N, S, W  
 Door Undercut: Allow 5/8"



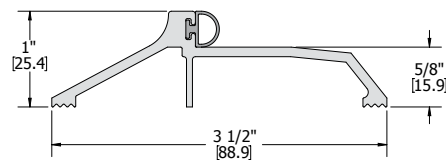
### 552S



- Finishes: MIL, DBA, GLD  
 Inserts: V, N, S, W  
 Door Undercut: Allow 1/2"



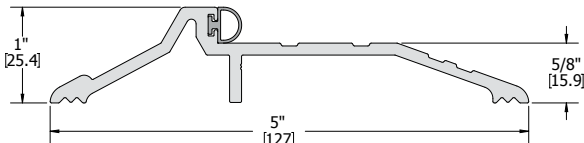
### 560S



- Finishes: MIL, DBA, GLD  
 Inserts: V, N, S, W  
 Door Undercut: Allow 3/4"



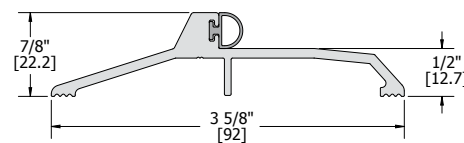
### 532S



- Finishes: MIL, DBA, GLD  
 Inserts: V, N, S, W  
 Door Undercut: Allow 3/4"



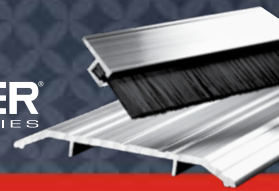
### 565S



- Finishes: MIL, DBA, GLD  
 Inserts: V, N, S, W  
 Door Undercut: Allow 5/8"

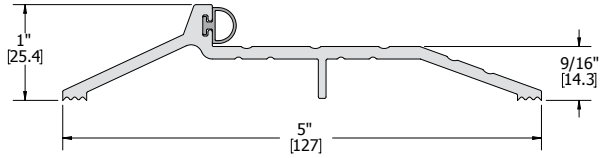






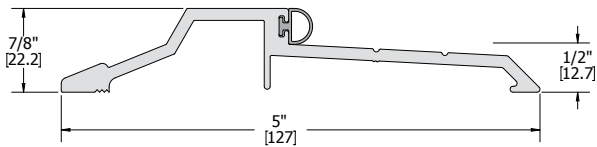
## THRESHOLDS - PANIC

### 575S



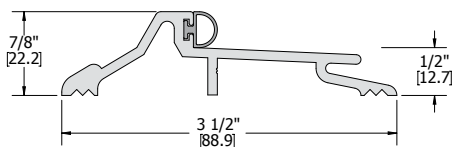
Finishes: MIL, DBA, GLD  
 Inserts: V, N, S, W  
 Door Undercut: Allow 11/16"  
 Certifications: 

### 580S



Finishes: MIL, DBA, GLD  
 Inserts: V, N, S, W  
 Door Undercut: Allow 5/8"  
 Certifications: 

### 599S



Finishes: MIL, DBA, GLD  
 Inserts: V, N, S, W  
 Door Undercut: Allow 5/8"  
 Certifications: 

## THRESHOLDS - THERMAL BARRIER PANIC

Threshold for latching panic devices that have a thermal barrier permanently bonded in place to effectively block the transfer of heat or cold. Use in conjunction with surface applied vertical rod exit device.

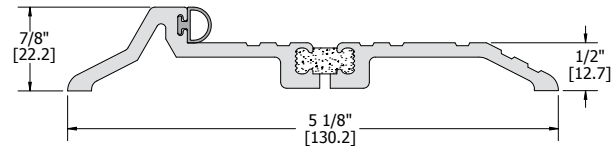
Fasteners: #10 x 1-1/2" Flat head sheet metal screws, other screw types and anchors available upon request

Options: Available with Sure Step non-slip abrasive coating

Notes:

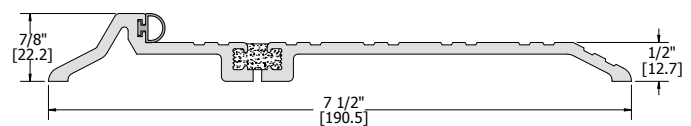
- MIL finish thresholds are supplied with zinc plated screws
- Color anodized thresholds are supplied with screws plated to match

### 516S

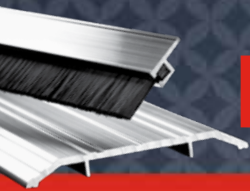


Finishes: MIL, DBA, GLD  
 Inserts: V, N, S, W  
 Certifications: 

### 518S



Finishes: MIL, DBA, GLD  
 Inserts: V, N, S, W  
 Certifications: 



## THRESHOLDS - INTERLOCKING

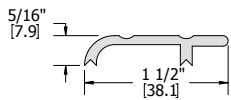
Threshold interlocks with hook on the bottom of the door for a superior seal against wind and rain

Fasteners: #10 x 1-1/2" Flat head sheet metal screws, other screw types and anchors available upon request

Options: Available with Sure Step non-slip abrasive coating

- Notes:
- MIL finish thresholds are supplied with zinc plated screws
  - Color anodized thresholds are supplied with screws plated to match
  - Thresholds are supplied with the 701S J-Hook
  - Metal doors must have flush bottom for proper J-hook installation

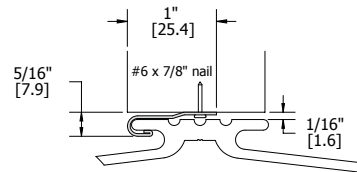
### 600S



Finishes: MIL, DBA, GLD

Certifications:

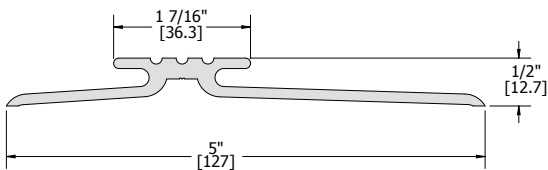
### 701S



Finishes: MIL  
Fasteners: #6 x 7/8" nail  
Certifications:

Notes: J-Hook interlocks with threshold to seal against wind and rain

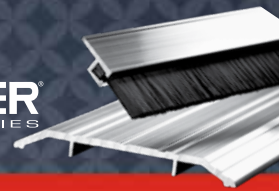
### 604S



Finishes: MIL, DBA

Certifications:





## THRESHOLDS- ABRASIVE CAST ALUMINUM

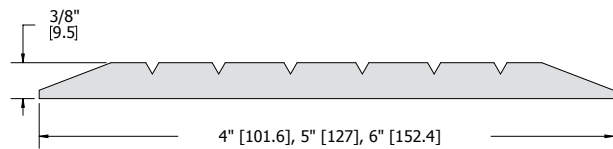
A heavy duty aluminum threshold with silicon carbide granules integrally cast into the surface. Ideal for high traffic areas where maximum durability is required. The abrasive, skid resistant surface works well under wet, dry or oily conditions.

Fasteners: #1/4" flat head zinc plated sheet metal screws with lead anchor

Options: Cast-on anchors available upon request

- Notes:
- Furnished with countersunk holes
  - Cut with a reinforced abrasive plain surface disk, 1/8" thick, either aluminum oxide or silicon carbide
  - Maximum length available is 8 feet, not available for floor closers
  - Available in 4", 5" and 6" widths

### 626S



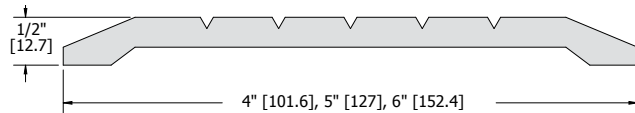
Finishes:

CAL

Certifications:



### 627S

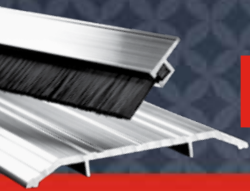


Finishes:

CAL

Certifications:





## THRESHOLDS - FLOOR CLOSER

Used with floor closers on center or offset hung door applications.

Fasteners: #10 x 1-1/2" flat head sheet metal screws, other screw types and anchors available upon request

Options: Available with Sure Step non-slip abrasive coating

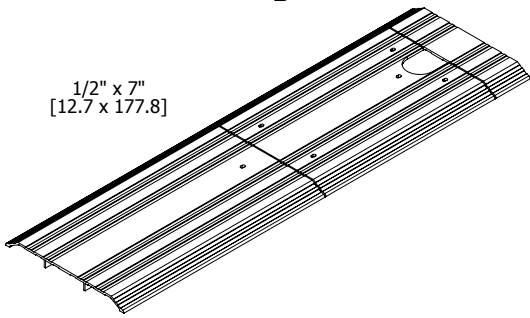
Order: Specify closer manufacturer, offset, closer model number, thickness of door, width of door opening and handing

Notes:
 

- MIL finish thresholds are supplied with zinc plated screws
- Color anodized thresholds are supplied with screws plated to match

### 651S - Center Hung

1/2" x 7"  
[12.7 x 177.8]



Finishes:

MIL, DBA

Certifications:

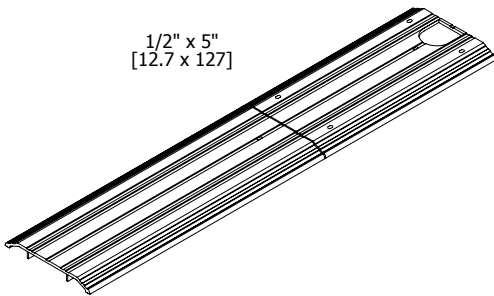


Notes:

- Center hung
- Without mitered ends

### 652S - Center Hung

1/2" x 5"  
[12.7 x 127]



Finishes:

MIL, DBA

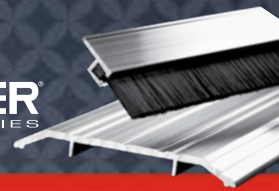
Certifications:



Notes:

- Center hung
- Without mitered ends





## THRESHOLDS - COVER PLATES AND VINYL THRESHOLDS

Cover Plates are used primarily to cover expansion joints and for situations requiring extra width or strength. Manufactured from solid cold rolled aluminum for extra durability.

Fasteners: Furnished without holes and fasteners unless specified

Notes:
 

- Available to 96" in length
- Furnished with both edges beveled

### 676S

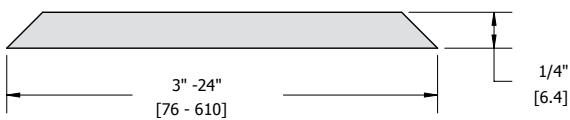


Finishes: MIL

Certifications:



### 677S



Finishes: MIL

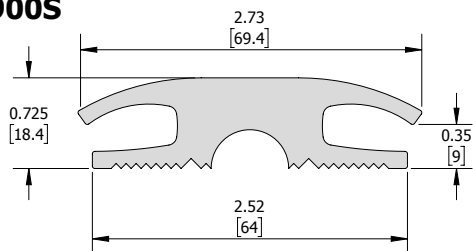
Certifications:



## Vinyl Thresholds

Transition between different floor types.

### 900S



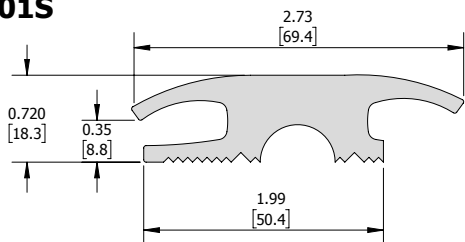
Finishes: Black

Certifications:



Notes: Transition between carpet to carpet applications.

### 901S



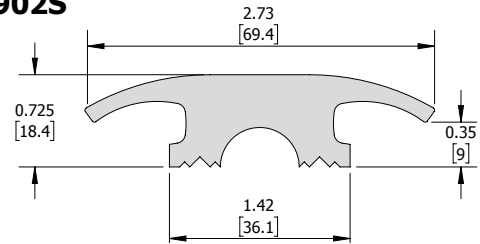
Finishes: Black

Certifications:



Notes: Transition between carpet to tile applications.

### 902S



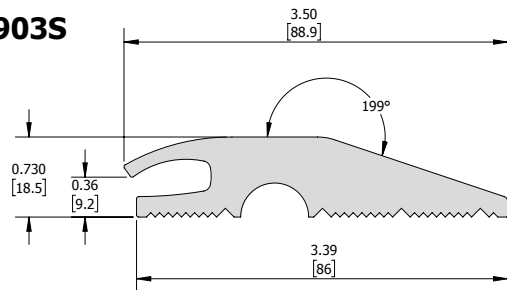
Finishes: Black

Certifications:



Notes: Transition between tile to tile applications.

### 903S



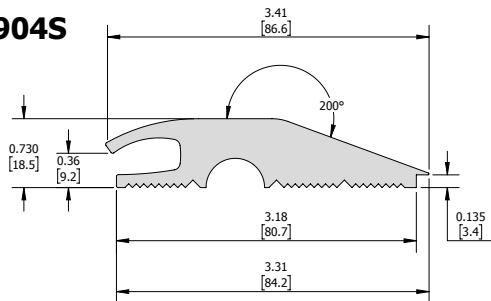
Finishes: Black

Certifications:



Notes: Transition to carpet.

### 904S



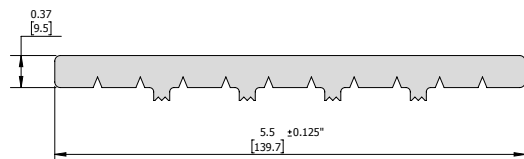
Finishes: Black

Certifications:



Notes: Transition between carpet to tile applications.

### 905S

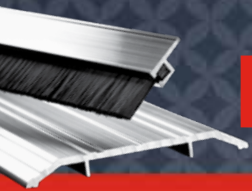


Finishes: Black

Certifications:



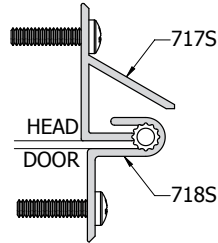
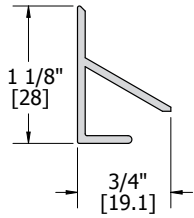
Notes: Transition between communicating door frames.



**WEATHERSTRIPPING - INTERLOCKING/OVERHEAD DRIP GUARDS**

Fasteners: #6 x 5/8" pan head sheet metal screws

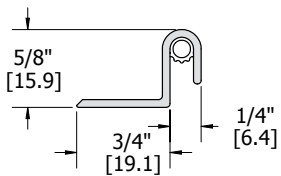
**717S**



Finishes:  
Certifications:

MIL, DBA

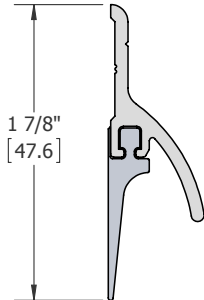
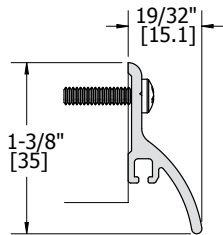
**718S**



Finishes:  
Inserts:  
Certifications:

MIL, DBA, GLD  
V

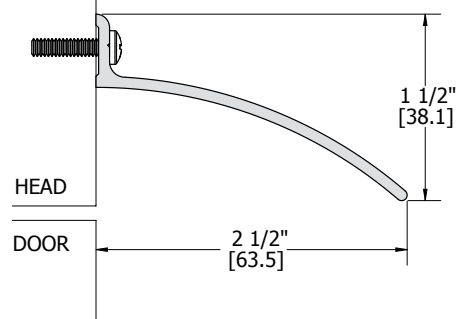
**770S**



Finishes:  
Inserts:  
Category:  
Certifications:

MIL, DBA, GLD  
B, V, or without insert  
H, J (with insert)

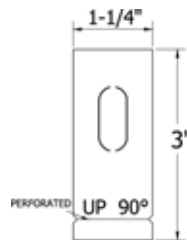
**810S**



Finishes:  
Certifications:

MIL, DBA, GLD

**709S**

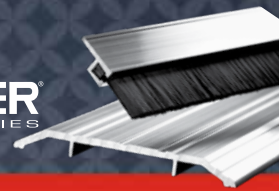


Finish:  
Certifications:

Black



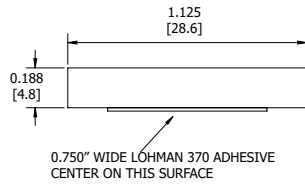




# WEATHERSTRIPPING - PRESS-ON GASKETING

## Adhesive Mullion Seal

### 710S



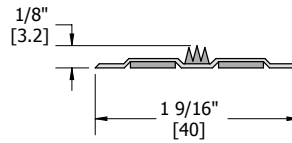
Finishes:  
Category:  
Certifications:

Black  
H&J

Notes:  
• Sponge Neoprene

0.750" WIDE LOHMAN 370 ADHESIVE  
CENTER ON THIS SURFACE

### 734



Finishes: Charcoal, Brown  
Category: H, G, J

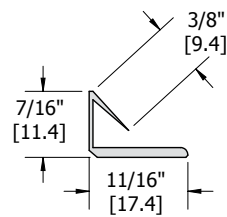
Certifications:

Notes:  
• Intumescent material  
• Thermoplastic Elastomer (TPE) material

## Combination Edge-Sealing System with Smoke Control

Field applied edge-sealing system gaskets with integrated smoke fin. Add to the frame of a B, C or 1/3 hour labeled fire door.

### 719



Finishes: Charcoal, Brown  
Category: H, G, J

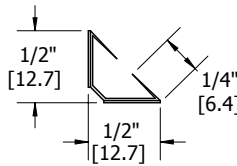
Certifications:

Notes:  
• Requires 1/8" clearance  
• Not recommended for door frames with 1/2" stop or less  
• Recommend 3/16" backset - door side hinge  
• Intumescent material  
• Thermoplastic Elastomer (TPE) material

## Edge-Sealing Systems

Field applied edge-sealing system gaskets. Add to the frame of a B, C or 1/3-hour labeled fire doors to comply with positive pressure requirements.

### 721

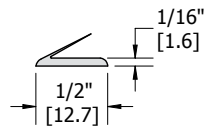


Finishes: Charcoal, Brown, Gray, White  
Category: H, J

Certifications:

Notes: Thermoplastic Elastomer (TPE) material

### 720

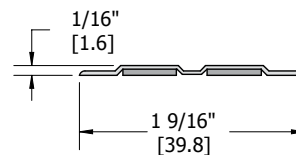


Finishes: Charcoal, Brown, White  
Category: H, G, J

Certifications:

Notes:  
• Thin design for doors and frames with tight tolerances  
• Intumescent material  
• Thermoplastic Elastomer (TPE) material

### 724

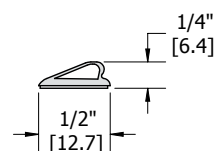


Finishes: Charcoal, Brown  
Category: G

Certifications:

Notes:  
• Intumescent material  
• Thermoplastic Elastomer (TPE) material

### 722

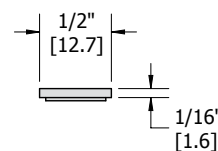


Finishes: Charcoal, Brown  
Category: H, G, J

Certifications:

Notes:  
• Requires 1/8" clearance.  
• Recommend 3/16" backset - door side hinge  
• Intumescent material  
• Thermoplastic Elastomer (TPE) material

### 729

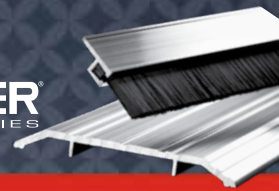


Finishes: Charcoal, Brown, White  
Category: G

Certifications:

Notes:  
• Intumescent material  
• Thermoplastic Elastomer (TPE) material





## WEATHERSTRIPPING - DOOR BOTTOMS

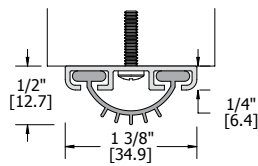
Provides a seal against weather. For best results, use in conjunction with a threshold.

Fasteners: #6 x 5/8" pan head sheet metal screws

Notes:

- Lengths up to 48" are supplied 1/2" over their stated size to allow for fitting
- Lengths over 48" are supplied 1" over size
- "Cut to exact length," may be specified
- Constructed of strong extruded 6063-T5 aluminum

### 774S



Finishes: MIL, DBA

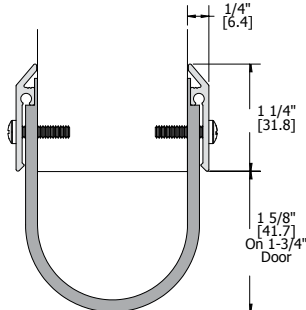
Inserts: V, N

Category: H, J

Certifications:



### 776S



Finishes: CLR, DBA, GLD

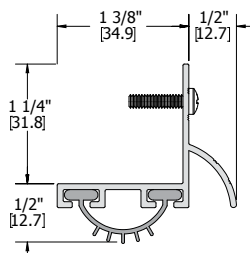
Inserts: N

Category: H, J

Certifications:



### 777S



Finishes: MIL, DBA, GLD

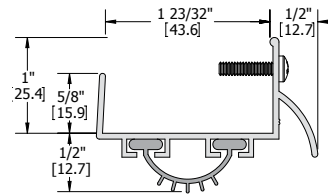
Inserts: V, N

Category: H, J

Certifications:



### 778S



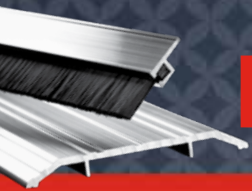
Finishes: MIL, DBA, GLD

Inserts: V, N

Category: H, J

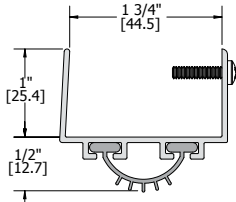
Certifications:





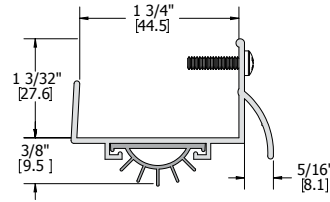
# WEATHERSTRIPPING - DOOR BOTTOMS

## 779S



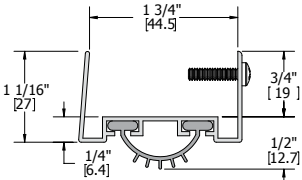
Finishes: MIL, DBA, GLD  
 Inserts: V, N  
 Category: H, J  
 Certifications:

## 783S



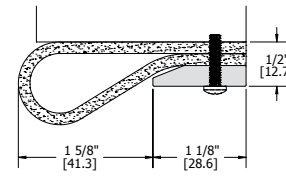
Finishes: MIL, DBA, GLD  
 Inserts: V  
 Category: J  
 Certifications:

## 780S



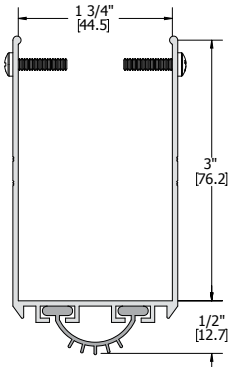
Finishes: MIL, DBA, GLD  
 Inserts: V, N  
 Category: H, J  
 Certifications:

## 787S



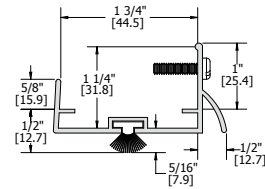
Finishes: MIL  
 Inserts: N  
 Category: H, J  
 Certifications:

## 782S



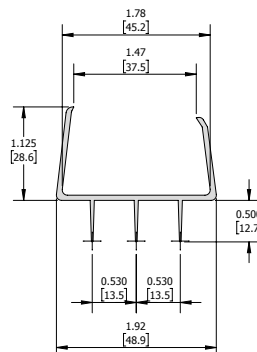
Finishes: MIL, DBA, GLD  
 Inserts: V, N  
 Category: H, J  
 Certifications:

## 789S



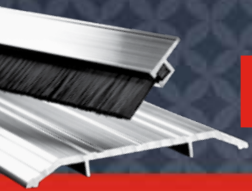
Finishes: MIL, DBA, GLD  
 Inserts: W  
 Category: H, J  
 Certifications:

## 906S



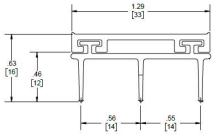
Finishes: Brown  
 Material: PVC  
 Certifications:   
 \*Unnotched & Notched profiles available






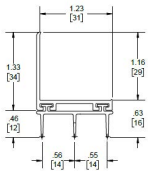
**WEATHERSTRIPPING - DOOR BOTTOMS**


**907S**



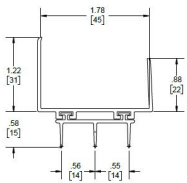
Finishes: MIL, DBA, GLD  
 Insert: V  
 Certifications:   
 \*Unnotched & Notched profiles available


**908S**



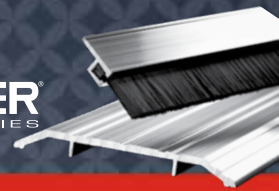
Finishes: MIL, DBA, GLD, CLR  
 Insert: V  
 Certifications:   
 \*Unnotched & Notched profiles available

**909S**



Finishes: MIL, DBA, GLD, CLR  
 Insert: V  
 Certifications:   
 \*Unnotched & Notched profiles available





## WEATHERSTRIPPING - AUTOMATIC DOOR BOTTOMS

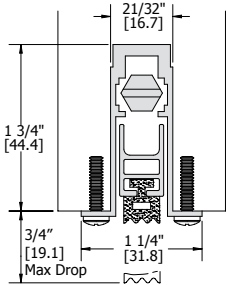
Provides an outstanding seal against drafts, light, smoke and sound. For best results, use in conjunction with a threshold. When door fully closes, the gasket extends downward to provide a seal. Gasket retracts when door is opened.

Fasteners:

- #8 x 1-1/4" pan head sheet metal screws furnished with surface mount types
- #6 x 5/8" Pan head sheet metal screws furnished with mortise types
- Furnished exact length as stated.
- Furnished with end cover and strike plates
- DBA/GLD end caps available on MIL or CLR devices (Not available on 742S)

Notes:

### 730S - Mortise



Finishes:  
Inserts:  
Category:  
Certifications:

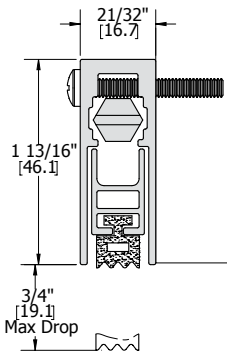
MIL  
N, S  
H, J



Notes:

Available order lengths: 12" to 60".  
Lengths 16"-29" may be trimmed for fitting (2" maximum).  
Lengths 30"-60" may be trimmed for fitting (5" maximum).

### 740S - Surface



Finishes:  
Inserts:  
Category:  
Certifications:

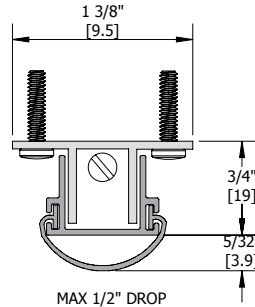
DBA, GLD, CLR  
N, S  
H, J



Notes:

Available order lengths: 12" to 60".  
Lengths 16"-29" may be trimmed for fitting (2" maximum).  
Lengths 30"-60" may be trimmed for fitting (5" maximum).

### 742S - Mortise



Finishes:  
Inserts:  
Category:  
Certifications:

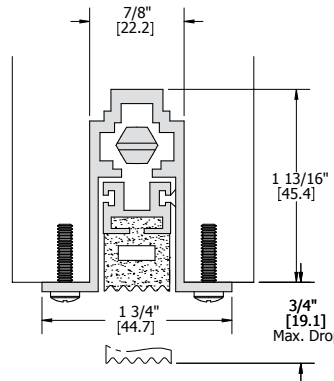
MIL  
V  
J



Notes:

For use on hollow metal door  
Available order lengths: 24" to 60".  
24" cannot be trimmed.  
36" to 48" can be trimmed up to 3".  
All other sizes can be trimmed up to 1".

### 743S - Mortise



Finishes:  
Inserts:  
Category:  
Certifications:

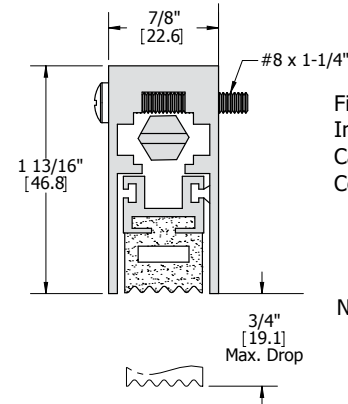
MIL  
N  
H, J



Notes:

Available order lengths: 12" to 60".  
Lengths 16"-29" may be trimmed for fitting (2" maximum).  
Lengths 30"-60" may be trimmed for fitting (5" maximum).

### 747S - Surface



Finishes:  
Inserts:  
Category:  
Certifications:

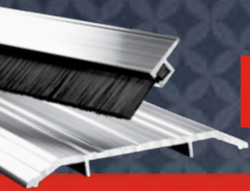
CLR, DBA, GLD  
N  
H, J



Notes:

Available order lengths: 12" to 60".  
Lengths 16"-29" may be trimmed for fitting (2" maximum).  
Lengths 30"-60" may be trimmed for fitting (5" maximum).



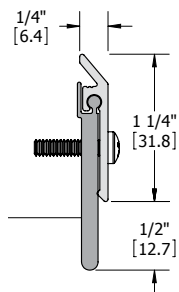


## WEATHERSTRIPPING - DOOR BOTTOM SWEEPS

Typically door bottom sweeps are used on the exterior of an outswing door  
Fasteners: #6 x 5/8" pan head sheet metal screws furnished with mortise types

- Notes:
- MIL finish weatherstripping is supplied with zinc plated screws
  - Color anodized weatherstripping is supplied with screws plated to match
  - Stainless steel weatherstripping is supplied with stainless steel screws

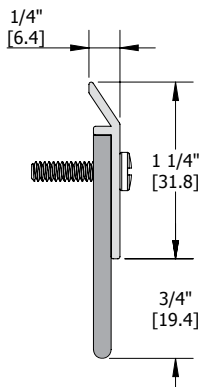
### 750S



Finishes: DBA, GLD, CLR, US32D  
Inserts: N, S  
Category: H, J

Certifications:

### 752S

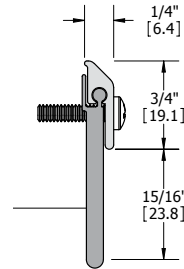


#6 x 5/8" PAN HEAD SHEET METAL SCREWS (FACTORY PROVIDED)

Finishes: MIL, DBA, GLD  
Inserts: V  
Category: H, J

Certifications:

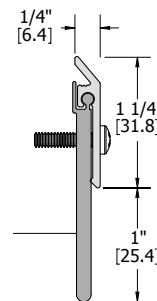
### 753S



Finishes: MIL, DBA, GLD  
Inserts: N  
Category: H, J

Certifications:

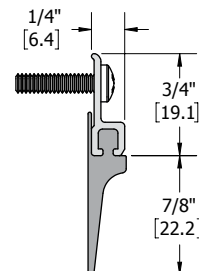
### 754S



Finishes: DBA, GLD, CLR  
Inserts: N  
Category: H, J

Certifications:

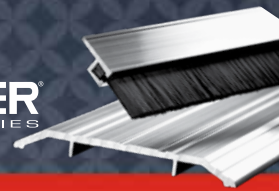
### 756S



Finishes: MIL, DBA, GLD  
Inserts: V  
Category: H, J

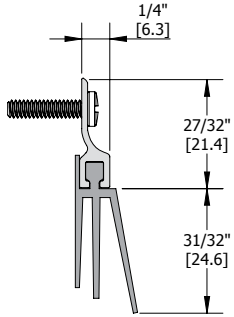
Certifications:






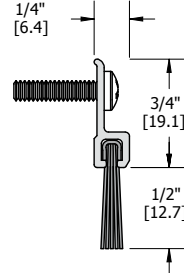
## WEATHERSTRIPPING - DOOR BOTTOM SWEEPS



### 759S



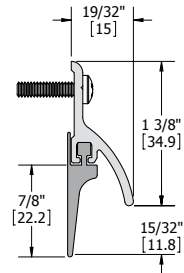
Finishes: MIL, DBA, GLD  
 Inserts: V  
 Category: H, J  
 Certifications: 



### 802S



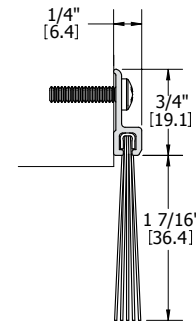
Finishes: MIL, DBA, GLD  
 Inserts: B  
 Category: H, J  
 Certifications:  


### 770S



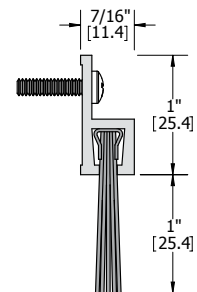
Finishes: MIL, DBA, GLD  
 Inserts: B, V  
 Category: H, J  
 Certifications:  


### 806S



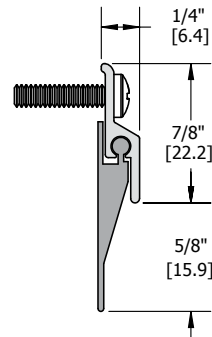
Finishes: MIL, DBA, GLD  
 Inserts: B  
 Category: H, J  
 Certifications: 



### 801S

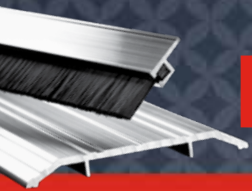


Finishes: MIL, DBA, GLD  
 Inserts: B  
 Category: H, J  
 Certifications: 

### 872S

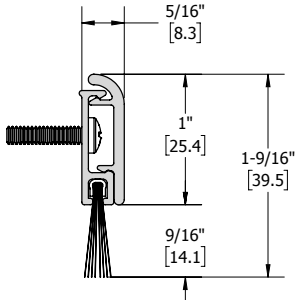




Finishes: DBA, GLD, CLR  
 Inserts: N  
 Category: H, J  
 Certifications:  



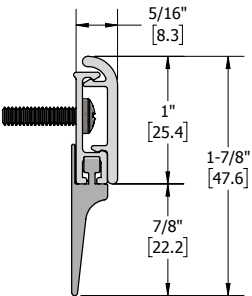
**WEATHERSTRIPPING - DOOR BOTTOM SWEEPS**



**882S**



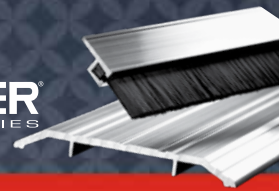
Finishes: DBA, GLD, CLR  
 Inserts: B  
 Category: H, J  
 Certifications:  

**884S**



Finishes: DBA, GLD, CLR  
 Inserts: V  
 Category: H, J  
 Certifications:  

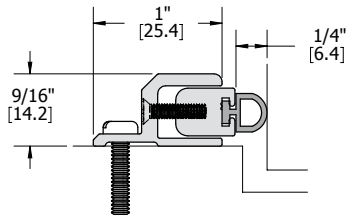







## WEATHERSTRIPPING - ADJUSTABLE JAMB WEATHERSTRIPPING

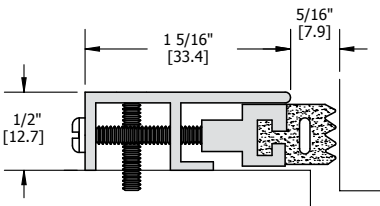
- Fasteners: #6 x 5/8" pan head sheet metal screws
- Notes:
- MIL finish weatherstripping is supplied with zinc plated screws
  - Color anodized weatherstripping is supplied with screws plated to match
  - Stainless steel weatherstripping is supplied with stainless steel screws



### 860S



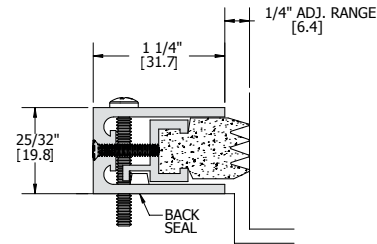
- Finishes: MIL, DBA, GLD
- Inserts: V, N, S, W
- Category: H, J
- Certifications:   
- Notes: Adjustable



### 864S



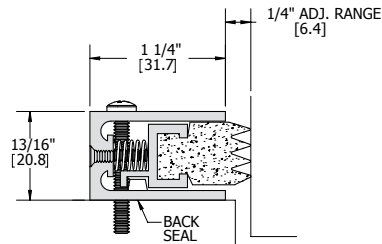
- Finishes: DBA, GLD, CLR
- Inserts: N
- Category: H, J
- Certifications:  
- Notes: Adjustable




### 865S

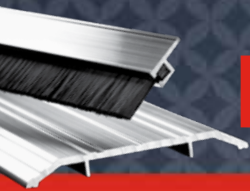


- Finishes: MIL, DBA, GLD
- Inserts: N
- Category: H, J
- Certifications:  
- Notes: Adjustable

### 866S



- Finishes: MIL, DBA
- Inserts: N
- Category: H, J
- Certifications:   
- Notes: Spring adjustable

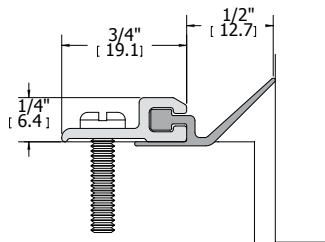


# WEATHERSTRIPPING - JAMB WEATHERSTRIPPING

**Fasteners:** 8-32 x 1" pan head phillips machine screws  
8-18 x 1" undercut flat head phillips sheet metal screws

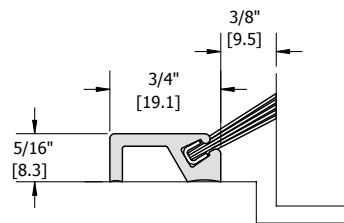
- Notes:**
- MIL finish weatherstripping is supplied with zinc plated screws
  - Color anodized weatherstripping is supplied with screws plated to match
  - Stainless steel weatherstripping is supplied with stainless steel screws

## 785S



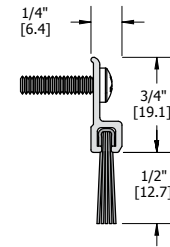
**Finishes:** MIL, DBA, GLD  
**Inserts:** N  
**Category:** H, J  
**Certifications:**

## 800S



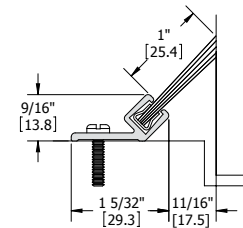
**Finishes:** MIL, DBA, GLD  
**Inserts:** B  
**Category:** H, J  
**Certifications:**

## 802S



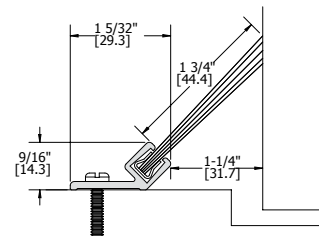
**Finishes:** MIL, DBA, GLD  
**Inserts:** B  
**Category:** H, J  
**Certifications:**

## 803S



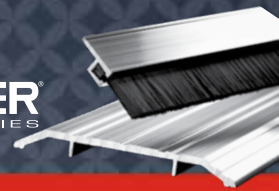
**Finishes:** MIL, DBA, GLD  
**Inserts:** B  
**Category:** H, J  
**Certifications:**

## 808S



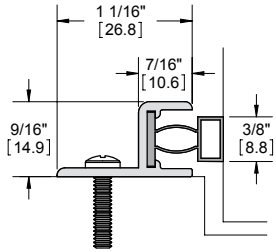
**Finishes:** MIL, DBA, GLD  
**Inserts:** B  
**Category:** H, J  
**Certifications:**







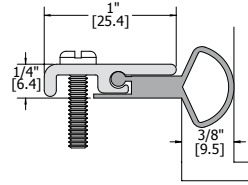
## WEATHERSTRIPPING - JAMB WEATHERSTRIPPING



### 859S



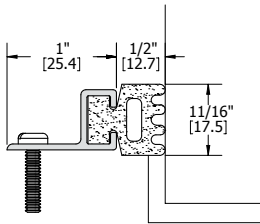
Finishes: MIL, DBA  
 Category: H, J  
 Certifications:    
 Notes: Magnetic



### 863S



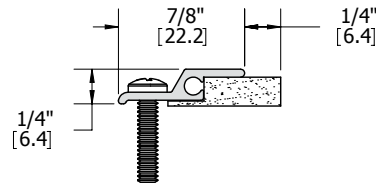
Finishes: DBA, GLD, CLR  
 Inserts: N  
 Category: H, J  
 Certifications:  




### 861S



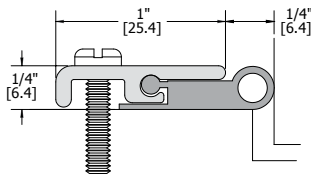
Finishes: MIL, DBA, GLD  
 Inserts: N  
 Category: H, J  
 Certifications:   




### 870S



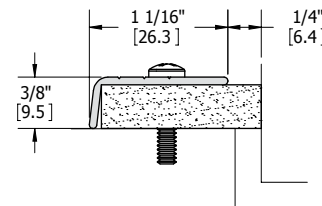
Finishes: DBA, GLD, CLR  
 Inserts: N  
 Category: H, J  
 Certifications:     
 Notes: Adjustable



### 862S



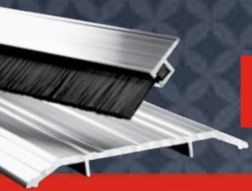
Finishes: DBA, GLD, CLR  
 Inserts: N  
 Category: H, J  
 Certifications:   

### 871S



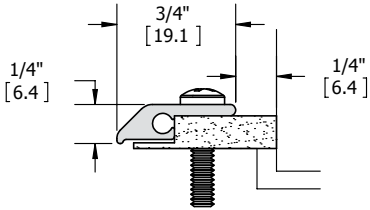
Finishes: MIL, DBA, GLD  
 Inserts: N  
 Category: H, J  
 Certifications:  





# WEATHERSTRIPPING - JAMB WEATHERSTRIPPING

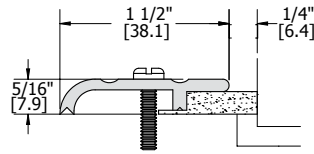
## 873S



Finishes: MIL, DBA, GLD  
 Inserts: N  
 Category: H, J  
 Certifications:



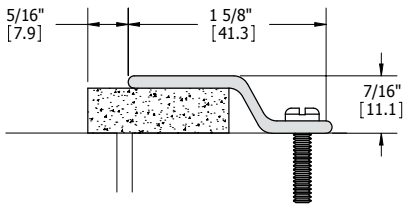
## 877S



Finishes: MIL, DBA, GLD  
 Inserts: N  
 Category: H, J  
 Certifications:



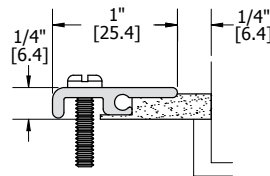
## 874S



Finishes: MIL, DBA, GLD, US32D  
 Inserts: N  
 Category: H, J  
 Certifications:



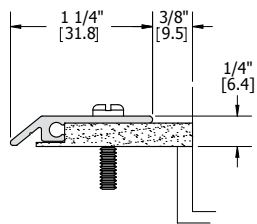
## 878S



Finishes: DBA, GLD, CLR  
 Inserts: N  
 Category: H, J  
 Certifications:



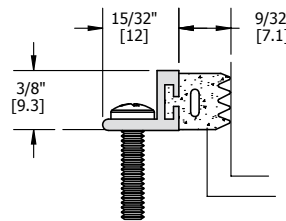
## 875S



Finishes: DBA, GLD, CLR  
 Inserts: N, S  
 Category: H, J  
 Certifications:

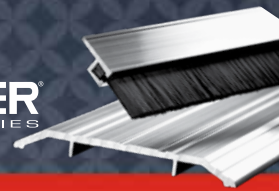


## 880S



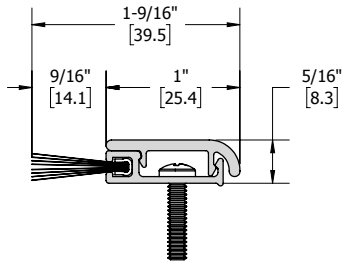
Finishes: MIL, DBA, GLD  
 Inserts: N  
 Category: H, J  
 Certifications:





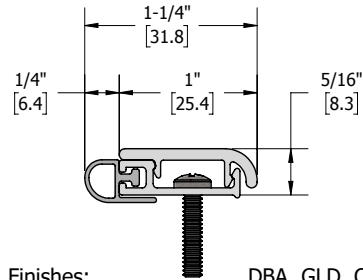
## WEATHERSTRIPPING - JAMB WEATHERSTRIPPING


### 882S



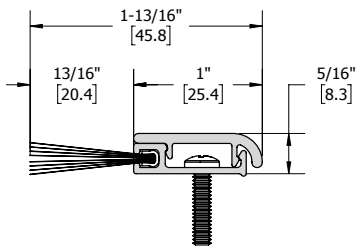
Finishes: DBA, GLD, CLR  
 Inserts: B  
 Category: H, J  
 Certifications:  



### 885S



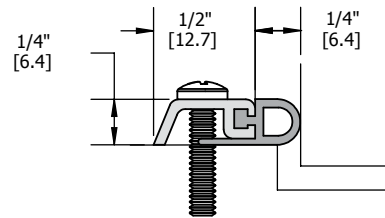
Finishes: DBA, GLD, CLR  
 Inserts: V, N, S, W  
 Category: H, J  
 Certifications:  



### 883S



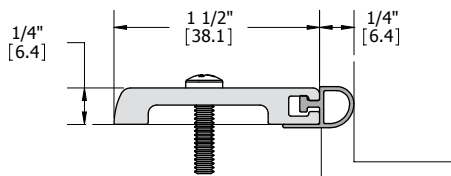
Finishes: DBA, GLD, CLR  
 Inserts: B  
 Category: H, J  
 Certifications:  



### 890S



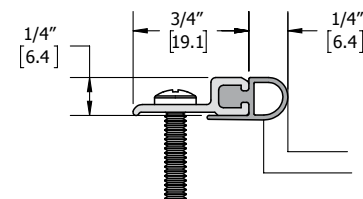
Finishes: MIL, DBA, GLD  
 Inserts: V, N, S  
 Category: H, J  
 Certifications:  

### 881S

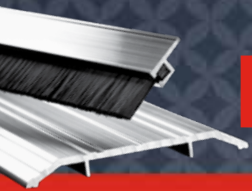


Finishes: MIL, DBA, GLD  
 Inserts: V, N, S, W  
 Category: H, J  
 Certifications:  

### 891S

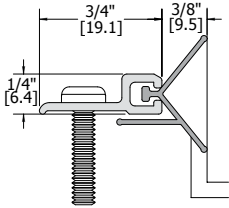


Finishes: MIL, DBA, GLD  
 Inserts: V, N, S  
 Category: H, J  
 Certifications:  



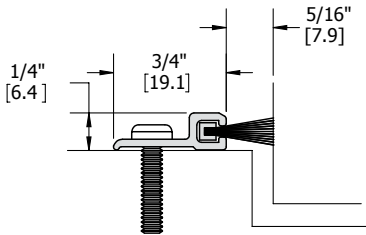
**WEATHERSTRIPPING - JAMB WEATHERSTRIPPING**

**892S**



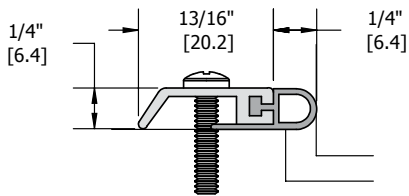
Finishes: MIL, DBA, GLD  
 Inserts: N  
 Category: H, J  
 Certifications:  




**893S**

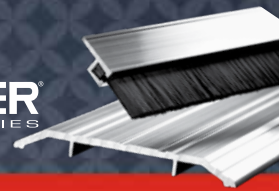


Finishes: MIL, DBA, GLD  
 Inserts: W  
 Category: J  
 Certifications:   

**896S**



Finishes: MIL, DBA, GLD  
 Inserts: V, N, S  
 Category: H, J  
 Certifications:   



## WEATHERSTRIPPING - ASTRAGALS/MEETING STILES

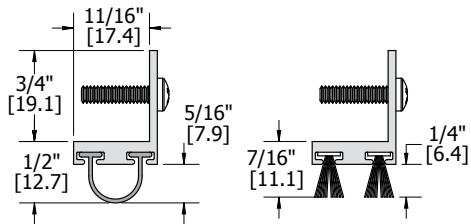
Fire labeled Astragals & Meeting Stiles should only be mounted on pairs of doors with a gap that meets NFPA 80 2-3.1.7 (1/8" +/- 1/16" for steel doors and not exceeding 1/8" for wood doors)

Fasteners: #6 x 5/8" Pan head sheet metal screws

Notes:

- MIL finish weatherstripping is supplied with zinc plated screws
- Color anodized weatherstripping is supplied with screws plated to match
- Stainless steel weatherstripping is supplied with stainless steel screws

### 751S



Finishes:

MIL, DBA, GLD

Inserts:

N, V, W

Category:

H, J

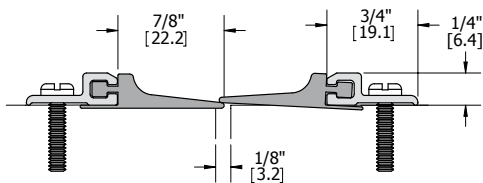
Certifications:



Notes:

Order two (2) for a set

### 756S



Finishes:

MIL, DBA, GLD

Inserts:

V

Category:

H, J

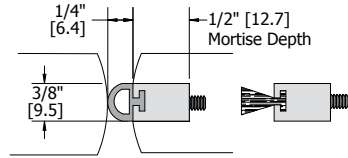
Certifications:



Notes:

Order two (2) for a set

### 771S



Finishes:

MIL, DBA

Inserts:

V, W, N, S

Category:

J

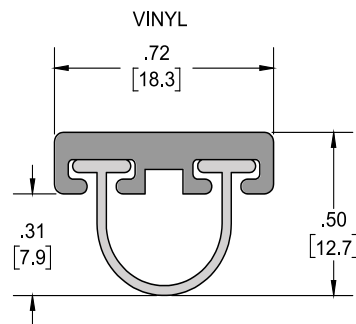
Certifications:



Notes:

Order two (2) for a set

### 772S



Finishes:

MIL, DBA, GLD

Inserts:

V, N, W

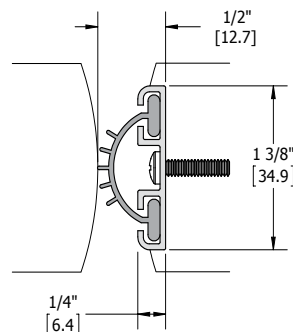
Category:

H, J

Certifications:



### 774S



Finishes:

MIL, DBA

Inserts:

V, N

Category:

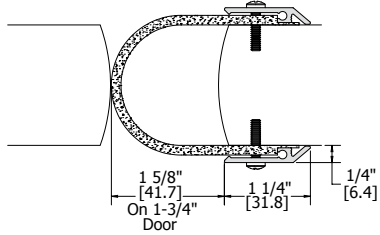
H, J

Certifications:



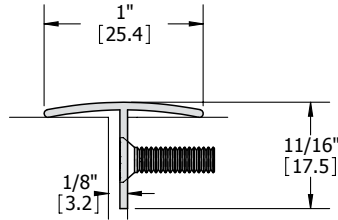
## WEATHERSTRIPPING - ASTRAGALS/MEETING STILES

### 776S



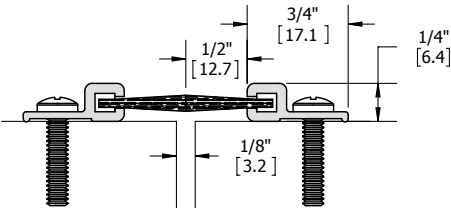
Finishes: DBA, GLD, CLR  
 Inserts: N  
 Category: H, J  
 Certifications:  



### 836S



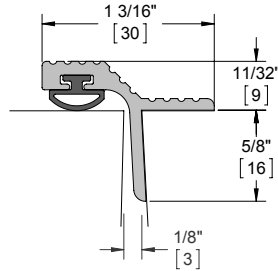
Finishes: MIL, DBA, GLD  
 Category: H, J  
 Certifications: 

### 802S



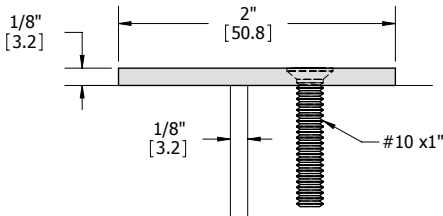
Finishes: MIL, DBA, GLD  
 Inserts: B  
 Category: H, J  
 Certifications:    
 Notes: Order two (2) for a set

### 837S



Finishes: MIL, DBA, GLD  
 Inserts: W, V, N, S  
 Category: H, J  
 Certifications:  

### 835S

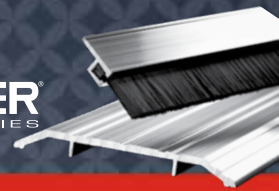


Finishes: MIL, DBA, GLD, US32D, USP  
 Category: J  
 Certifications:  

Notes:
 

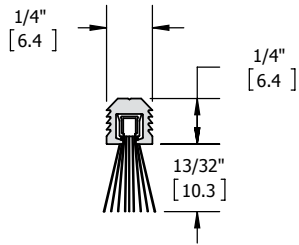
- Maximum length = 10 feet
- Available with thrubolts






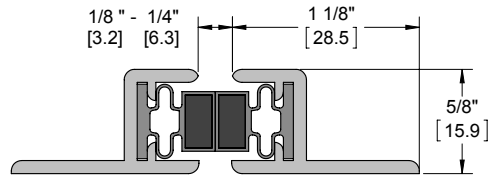
## WEATHERSTRIPPING - ASTRAGALS/MEETING STILES

### 839S



Finishes: MIL  
 Inserts: W  
 Category: J  
 Certifications: 

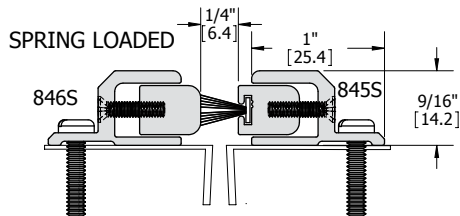
### 849S



Finishes: MIL, DBA  
 Notes:
 

- Magnetic
- 96" maximum door height
- Designed for use on 80" to 96" doors only
- Sets shorter than 80" may not work properly

### 845S | 846S

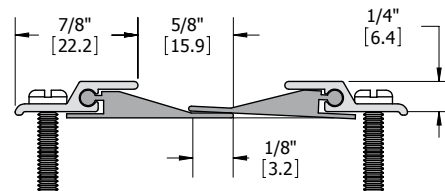




Finishes: MIL, DBA, GLD  
 Inserts: W  
 Category: J  
 Certifications: 

Notes:
 

- Adjustable
- Order two (2) for a set

### 872S

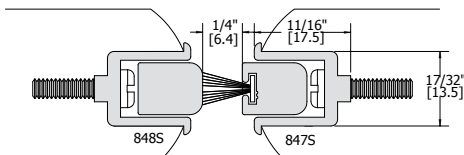


Finishes: DBA, GLD, CLR  
 Inserts: N  
 Category: H, J  
 Certifications:  

Notes:
 

- Order two (2) for a set

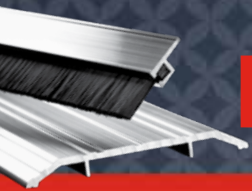
### 847S | 848S



Finishes: MIL, DBA, GLD  
 Inserts: W  
 Category: J  
 Certifications: 

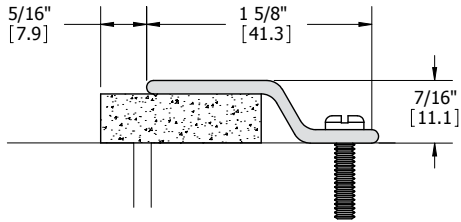
Notes:
 



- Adjustable
- Spring loaded
- Mortise depth = 21/32"



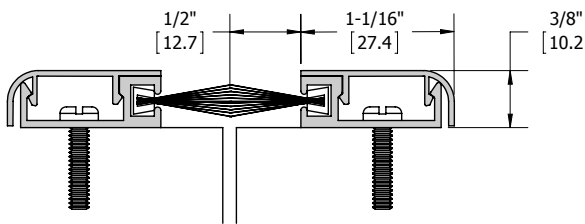
**WEATHERSTRIPPING - ASTRAGALS/MEETING STILES**



**874S**



Finishes: MIL, DBA, GLD, US32D  
 Inserts: N  
 Category: H, J  
 Certifications:  

**882S**



Finishes: DBA, GLD, CLR  
 Inserts: B  
 Category: H, J  
 Certifications:    
 Notes: Order two (2) for a set