

SOURCE: City of Bellingham, 2013; WA DRN, 2013; ESRI, 2014

**Figure 9**

Results of Comprehensive Restoration Prioritization - Sub-Watershed Tiers



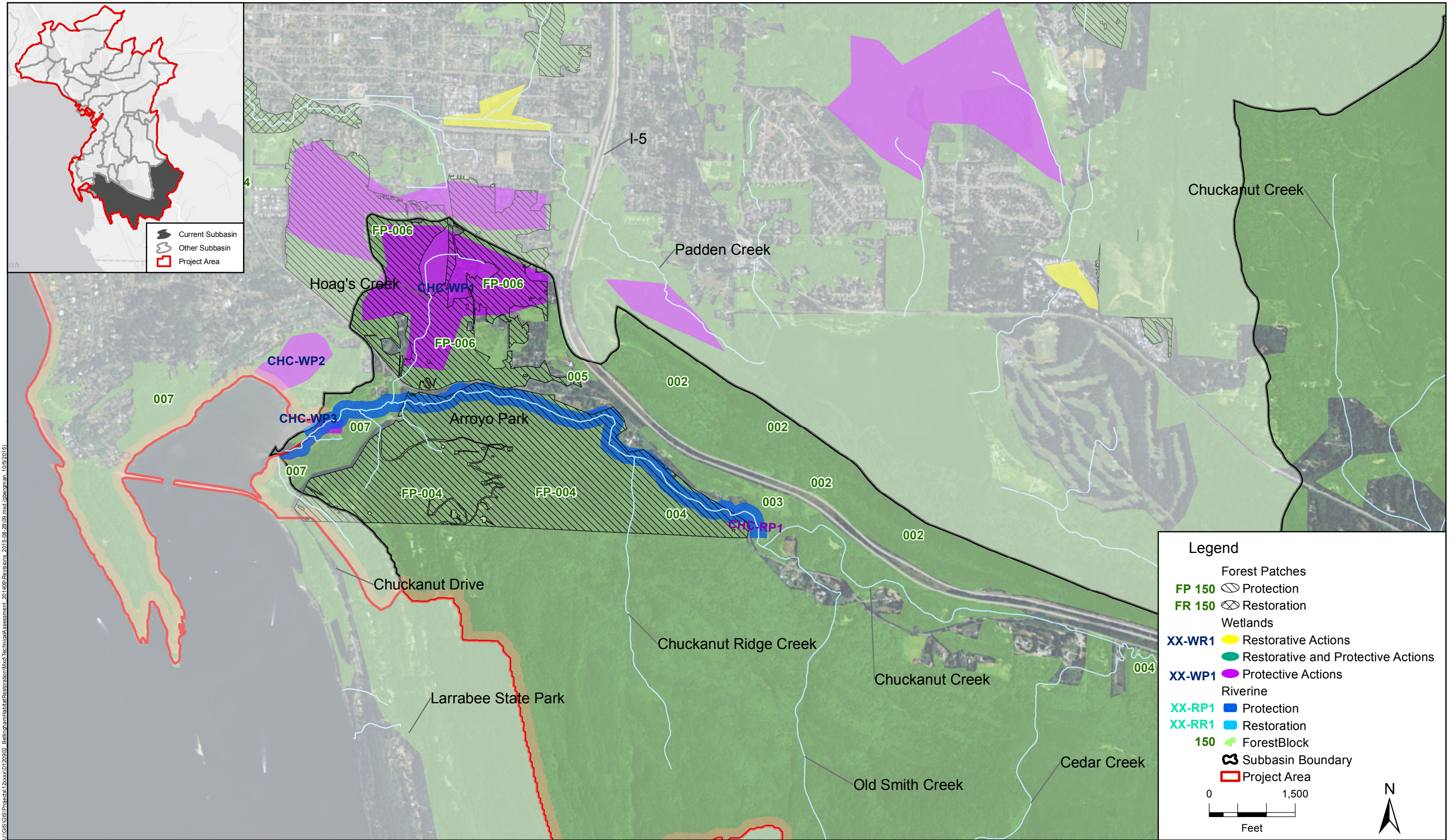




Figure 11. Chuckanut Creek Sub-watershed: HRTA Tier 1 Summary

Riverine Existing Condition - Relative Functional Condition Ratings  
(excerpt from Table 3)

Flow Variation Function	Surface Storage Function	Biodiversity Maintenance	Habitat Creation and Maintenance	Chemical Regulation	Thermo-regulation
Highest	Lower	Higher	Highest	Highest	Highest

Wetland Existing Condition - Relative Functional Condition Ratings  
(excerpt from Table 4)

Surface Water Storage	Nitrogen Removal	Pathogen Removal	Organic Matter Export/Contribution	Sediment/Phosphorus Removal	Wildlife Habitat	Carbon Sequestration
Highest	Higher	Highest	Higher	Higher	Highest	Highest

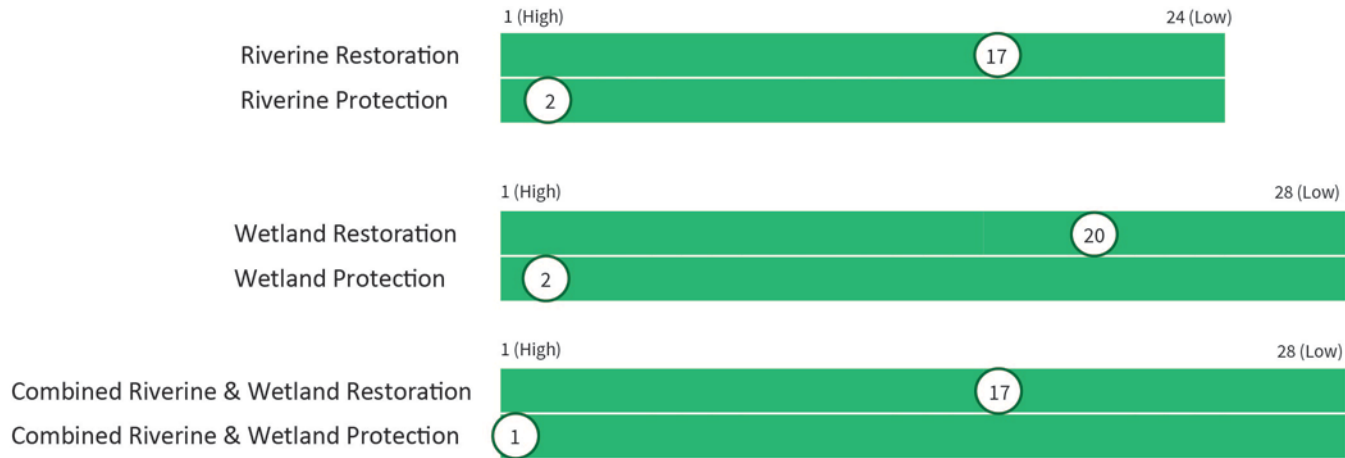
Forest Existing Condition -Relative Functional Condition Ratings  
(excerpt from Table 5)

Block ID Number	Biodiversity Function Score	System Maturity Attribute Score	Lifeform Diversity Attribute Score	Habitat Community Attribute Score	Habitat Maintenance Function Score	Habitat Connection and Fragmentation Attribute Score	Vegetation Structure Attribute Score
002	Highest	Highest	Lower	Highest	Highest	Highest	Higher
003	Higher	Highest	Median	Median	Higher	Higher	Highest
004	Highest	Highest	Higher	Highest	Highest	Highest	Highest
005	Median	Median	Higher	Lowest	Median	Lower	Median
006	Highest	Highest	Higher	Highest	Highest	Highest	Higher
007	Highest	Higher	Highest	Highest	Highest	Highest	Highest

Preliminary Prioritization Rankings  
(excerpt from Tables 15, 16, 18, and 19)

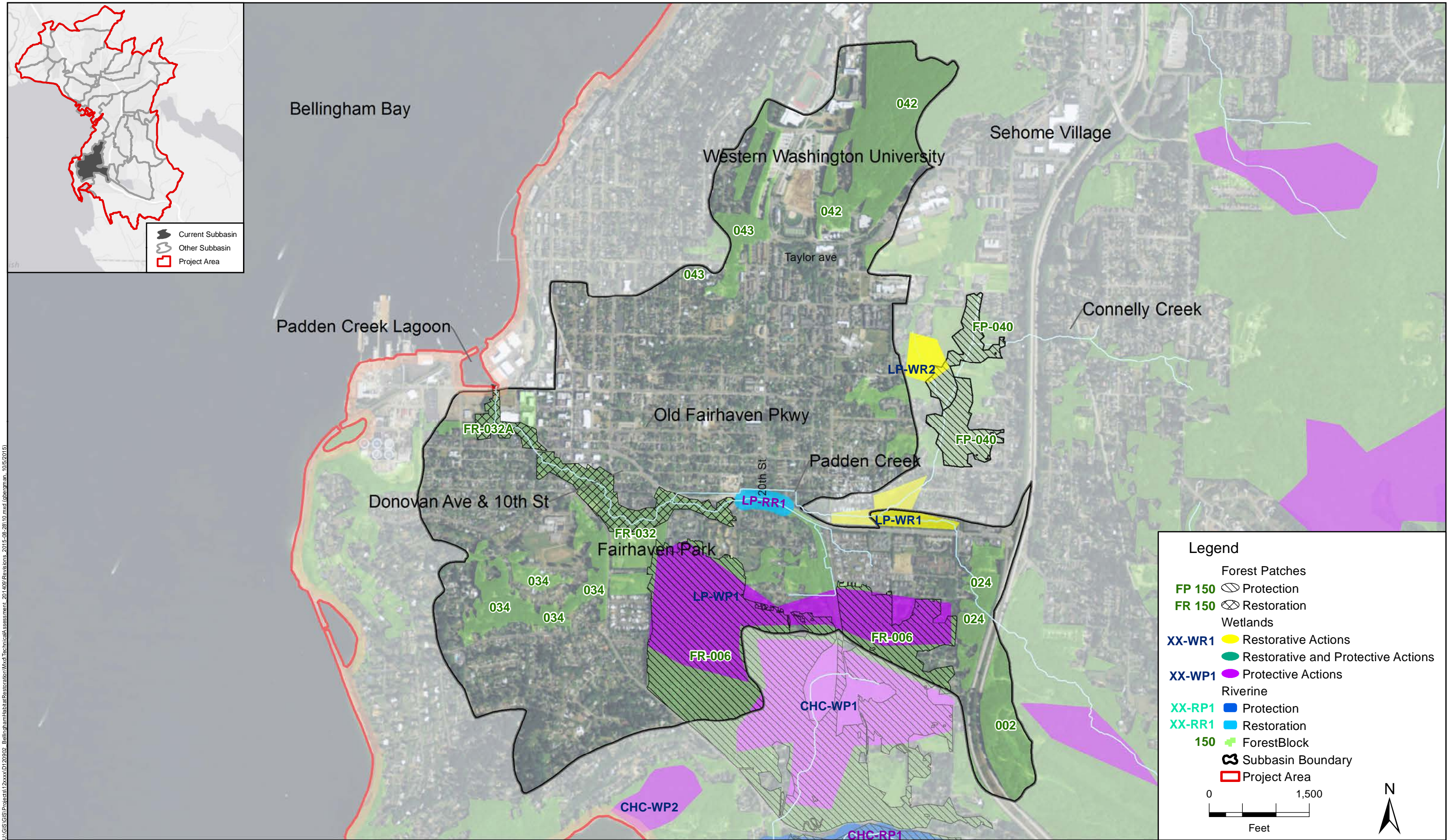
Riverine Restoration: #23 of 24  
Riverine Protection: #2 of 24  
Wetland Restoration: #27 of 28  
Wetland Protection: #2 of 28

Secondary Prioritization Rankings (Relative Rank Score for Restoration and Protective Actions)  
(excerpt from Tables 35, 36, and 41)



Tier 1 Forest Blocks for Restoration: None  
Tier 1 Forest Blocks for Protection: Blocks 004 and 006





SOURCE: City of Bellingham, 2013; ESRI, 2014

Bellingham Habitat Restoration • 120902

**Figure 12**

Recommended Restoration and Protection Actions in the Lower Padden Creek Sub-Watershed



Figure 13. Lower Padden Creek Sub-watershed: HRTA Tier 1 Summary

Riverine Existing Condition - Relative Functional Condition Ratings  
(excerpt from Table 3)

Flow Variation Function	Surface Storage Function	Biodiversity Maintenance	Habitat Creation and Maintenance	Chemical Regulation	Thermo-regulation
Median	Lower	Lower	Median	Lower	Median

Wetland Existing Condition - Relative Functional Condition Ratings  
(excerpt from Table 4)

Surface Water Storage	Nitrogen Removal	Pathogen Removal	Organic Matter Export/Contribution	Sediment/Phosphorus Removal	Wildlife Habitat	Carbon Sequestration
Lower	Lower	Lower	Lower	Lowest	Median	Median

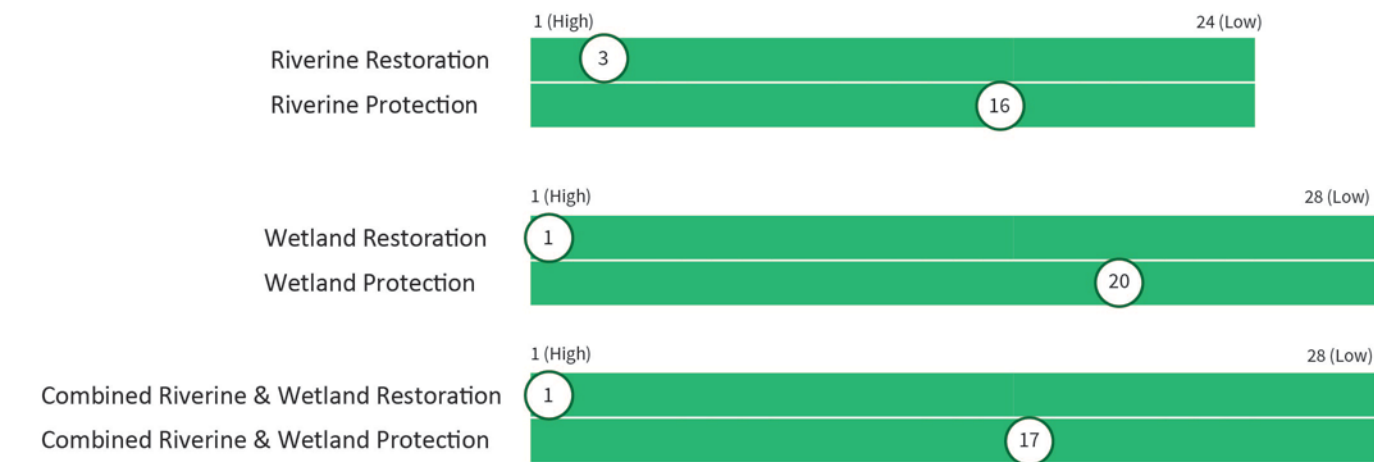
Forest Existing Condition -Relative Functional Condition Ratings  
(excerpt from Table 5)

Block ID Number	Biodiversity Function Score	System Maturity Attribute Score	Lifeform Diversity Attribute Score	Habitat Community Attribute Score	Habitat Maintenance Function Score	Habitat Connection and Fragmentation Attribute Score	Vegetation Structure Attribute Score
002	Highest	Highest	Lower	Highest	Highest	Highest	Higher
006	Highest	Highest	Higher	Highest	Highest	Highest	Higher
024	Median	Higher	Median	Lower	Median	Median	Higher
032	Median	Median	Median	Median	Lower	Lower	Lower
032A	Lowest	Lowest	Median	Lowest	Lowest	Lowest	Lowest
034	Lowest	Higher	Median	Lowest	Median	Higher	Median
042	Highest	Highest	Lowest	Highest	Highest	Higher	Highest
043	Median	Higher	Higher	Median	Median	Median	Higher

Preliminary Prioritization Rankings  
(excerpt from Tables 15, 16, 18, and 19)

Riverine Restoration: #7 of 24  
Riverine Protection: #17 of 24  
Wetland Restoration: #8 of 28  
Wetland Protection: #20 of 28

Secondary Prioritization Rankings (Relative Rank Score for Restoration and Protective Actions)  
(excerpt from Tables 35,36, and 41)



Tier 1 Forest Blocks for Restoration: Block 032  
Tier 1 Forest Blocks for Protection: Block 002



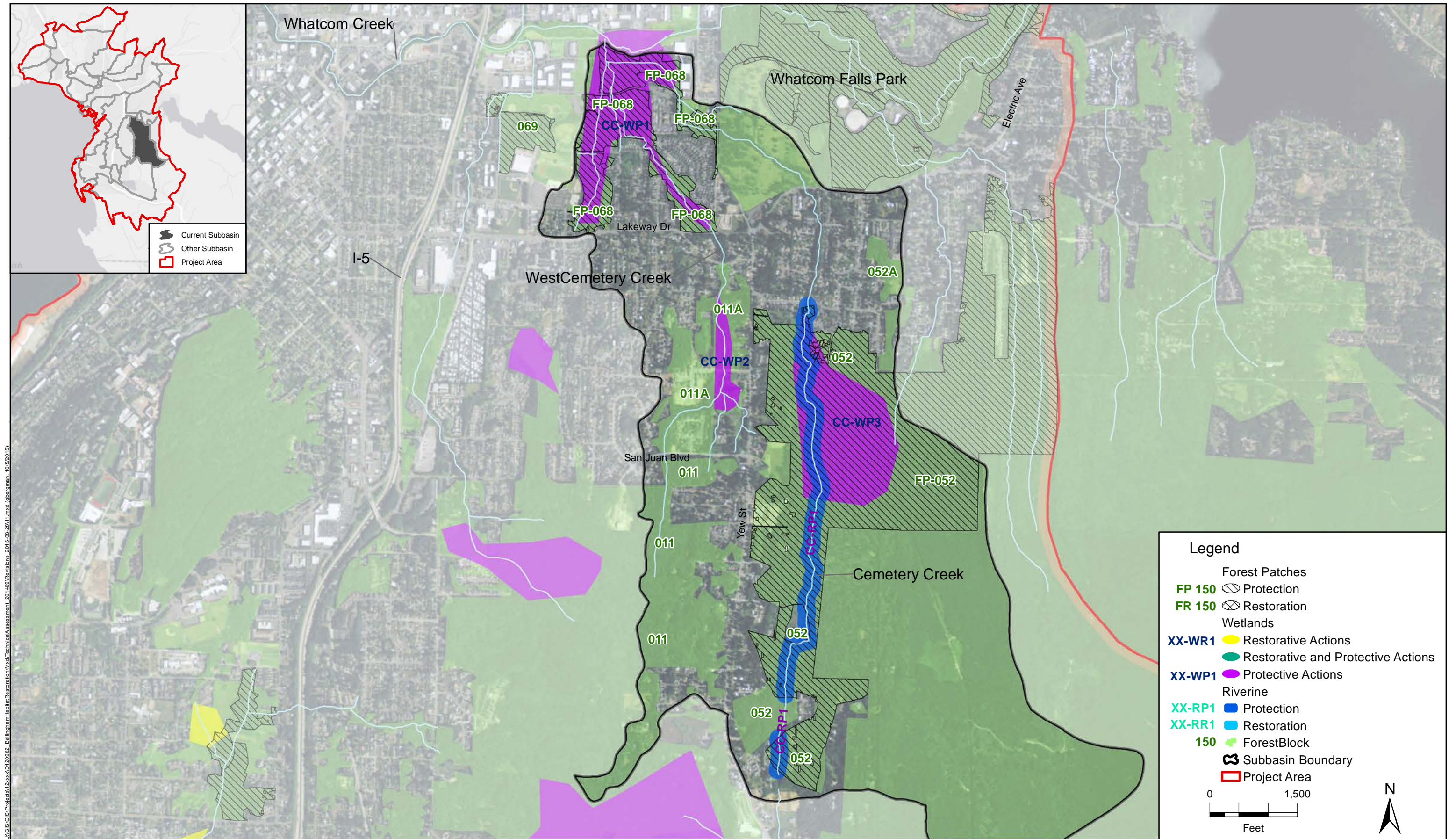




Figure 15. Cemetery Creek Sub-watershed: HRTA Tier 1 Summary

Riverine Existing Condition - Relative Functional Condition Ratings

(excerpt from Table 3)

Flow Variation Function	Surface Storage Function	Biodiversity Maintenance	Habitat Creation and Maintenance	Chemical Regulation	Thermo-regulation
Higher	Lower	Higher	Highest	Median	Lower

Wetland Existing Condition - Relative Functional Condition Ratings

(excerpt from Table 4)

Surface Water Storage	Nitrogen Removal	Pathogen Removal	Organic Matter Export/Contribution	Sediment/Phosphorus Removal	Wildlife Habitat	Carbon Sequestration
Highest	Higher	Median	Highest	Median	Higher	Higher

Forest Existing Condition -Relative Functional Condition Ratings

(excerpt from Table 5)

Block ID Number	Biodiversity Function Score	System Maturity Attribute Score	Lifeform Diversity Attribute Score	Habitat Community Attribute Score		Habitat Maintenance Function Score	Habitat Connection and Fragmentation Attribute Score	Vegetation Structure Attribute Score
011	Highest	Highest	Median	Higher		Highest	Highest	Highest
011A	Higher	Higher	Lowest	Median		Higher	Median	Higher
052	Highest	Higher	Highest	Highest		Highest	Highest	Median
052A	Median	Higher	Higher	Lower		Median	Median	Median
060	Highest	Highest	Lower	Highest		Higher	Highest	Median
068	Median	Higher	Lower	Median		Median	Median	Median

Preliminary Prioritization Rankings

(excerpt from Tables 15, 16, 18, and 19)

Riverine Restoration: #19 of 24

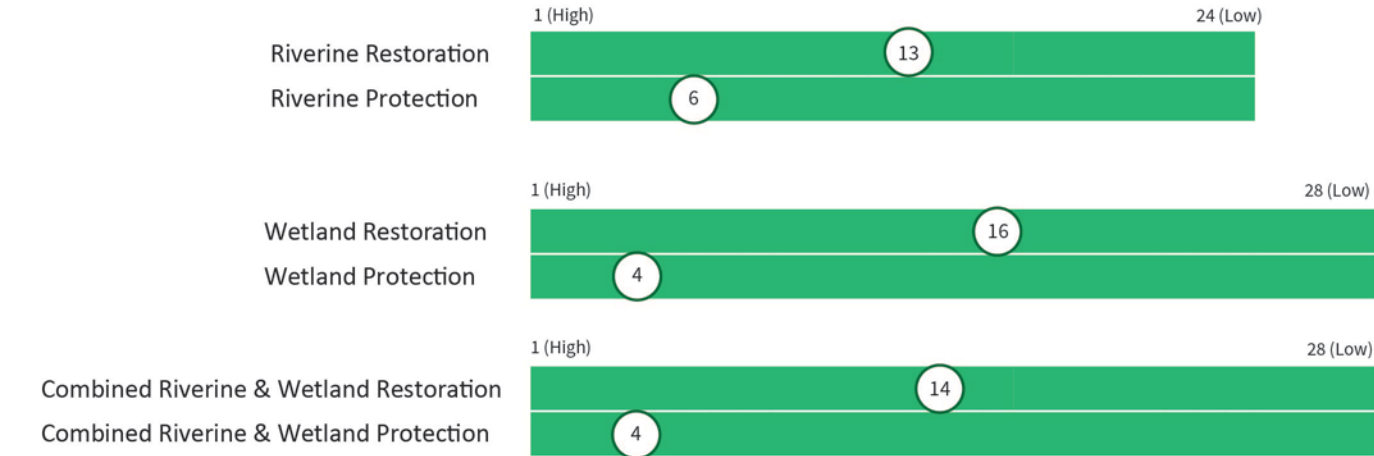
Riverine Protection: #6 of 24

Wetland Restoration: #23 of 28

Wetland Protection: #4 of 28

Secondary Prioritization Rankings (Relative Rank Score for Restoration and Protective Actions)

(excerpt from Tables 35,36, and 41)



Tier 1 Forest Blocks for Restoration: None  
Tier 1 Forest Blocks for Protection: Blocks 011, 052, and 060



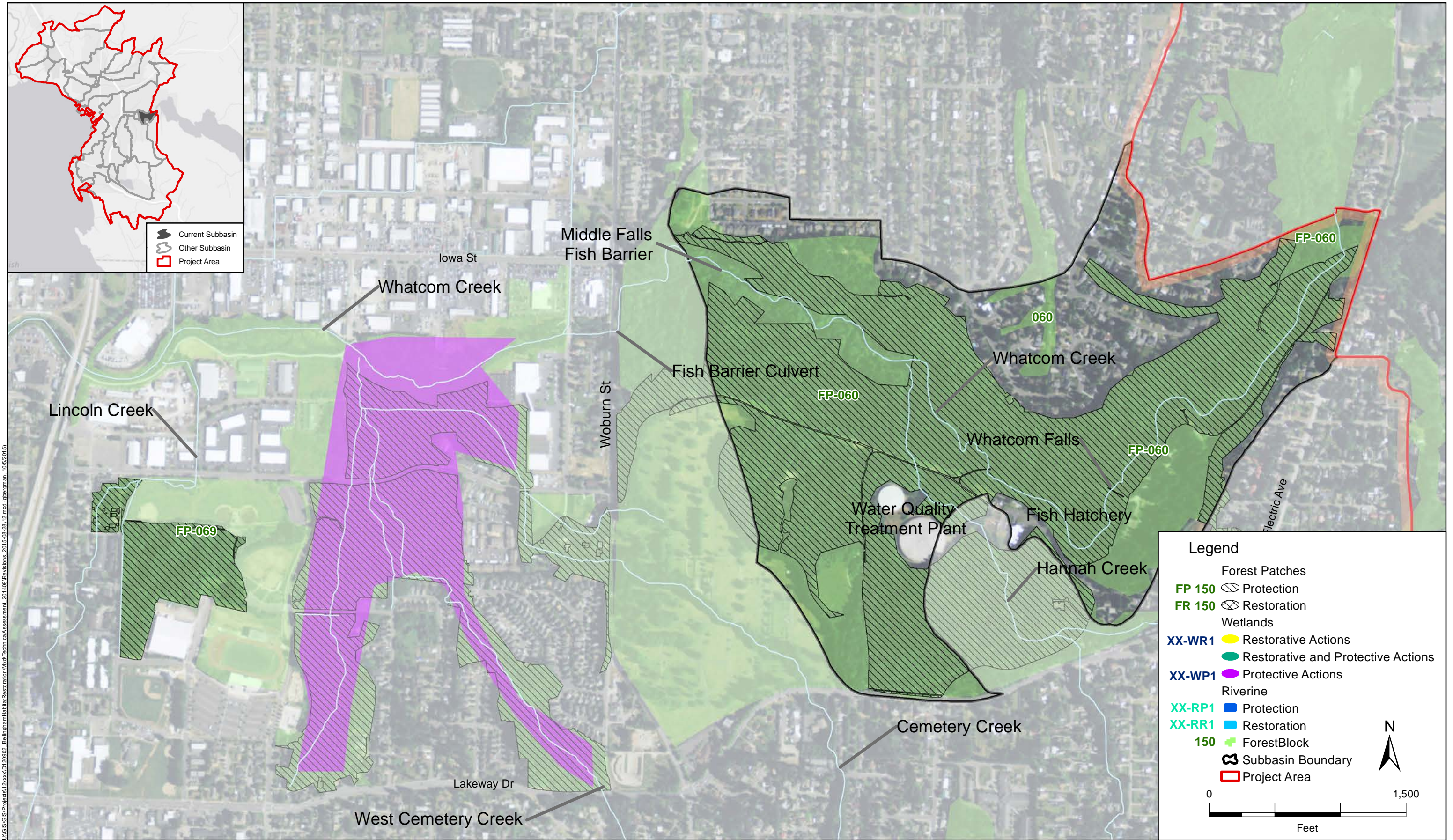




Figure 17. Upper Whatcom Creek Sub-watershed: HRTA Tier 1 Summary

Riverine Existing Condition - Relative Functional Condition Ratings

(excerpt from Table 3)

Flow Variation Function	Surface Storage Function	Biodiversity Maintenance	Habitat Creation and Maintenance	Chemical Regulation	Thermo-regulation
Highest	Higher	Highest	Highest	Highest	Highest

Wetland Existing Condition - Relative Functional Condition Ratings

(excerpt from Table 4)

Surface Water Storage	Nitrogen Removal	Pathogen Removal	Organic Matter Export/Contribution	Sediment/Phosphorus Removal	Wildlife Habitat	Carbon Sequestration
Highest	Higher	Median	Highest	Median	Higher	Highest

Forest Existing Condition -Relative Functional Condition Ratings

(excerpt from Table 5)

	Biodiversity Function Score	System Maturity Attribute Score	Lifeform Diversity Attribute Score	Habitat Community Attribute Score		Habitat Maintenance Function Score	Habitat Connection and Fragmentation Attribute Score	Vegetation Structure Attribute Score
Block ID Number								
060	Highest	Highest	Lower	Highest		Higher	Highest	Median

Preliminary Prioritization Rankings

(excerpt from Tables 15, 16, 18, and 19)

Riverine Restoration: #24 of 24

Riverine Protection: #1 of 24

Wetland Restoration: #26 of 28

Wetland Protection: #3 of 28

Secondary Prioritization Rankings (Relative Rank Score for Restoration and Protective Actions)

(excerpt from Tables 35,36, and 41)



Tier 1 Forest Blocks for Restoration: None

Tier 1 Forest Blocks for Protection: Block 060



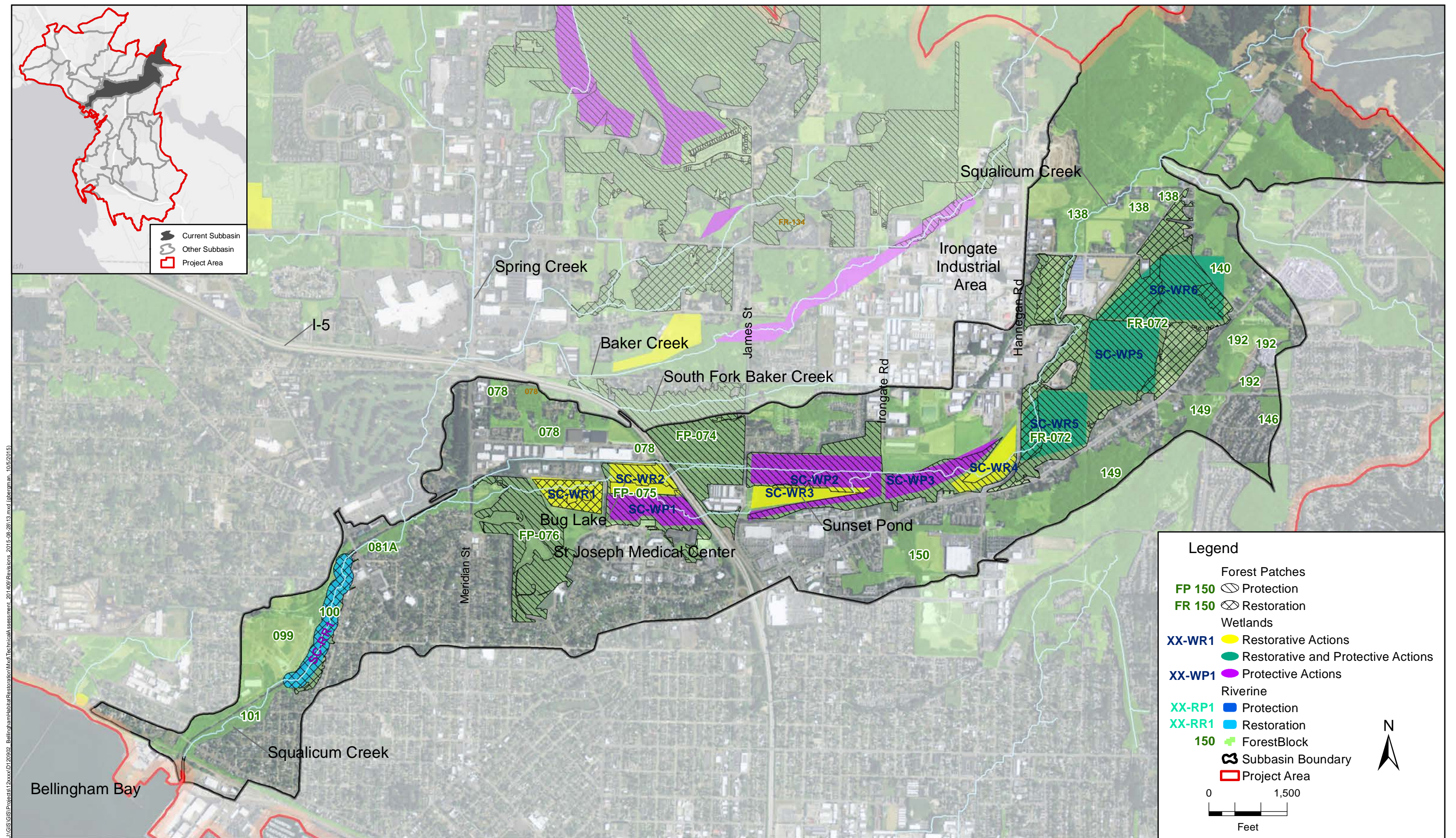




Figure 19. Lower Squalicum Creek Sub-watershed: HRTA Tier 1 Summary

Riverine Existing Condition - Relative Functional Condition Ratings

(excerpt from Table 3)

Flow Variation Function	Surface Storage Function	Biodiversity Maintenance	Habitat Creation and Maintenance	Chemical Regulation	Thermo-regulation
Median	Higher	Higher	Higher	Median	Lowest

Wetland Existing Condition - Relative Functional Condition Ratings

(excerpt from Table 4)

Surface Water Storage	Nitrogen Removal	Pathogen Removal	Organic Matter Export/Contribution	Sediment/Phosphorus Removal	Wildlife Habitat	Carbon Sequestration
Higher	Highest	Higher	Higher	Highest	Highest	Median

Forest Existing Condition -Relative Functional Condition Ratings

(excerpt from Table 5)

Block ID Number	Biodiversity Function Score	System Maturity Attribute Score	Lifeform Diversity Attribute Score	Habitat Community Attribute Score		Habitat Maintenance Function Score	Habitat Connection and Fragmentation Attribute Score	Vegetation Structure Attribute Score
072	Highest	Highest	Lower	Higher		Median	Median	Median
073	Higher	Higher	Higher	Higher		Median	Lower	Median
074	Median	Median	Median	Lower		Median	Median	Higher
075	Higher	Median	Lower	Higher		Higher	Median	Higher
076	Median	Highest	Lowest	Lower		Median	Higher	Median
078	Lowest	Median	Highest	Lowest		Lowest	Lowest	Lower
081A	Lower	Lower	Highest	Lower		Lowest	Lowest	Lowest
099	Lowest	Lowest	Higher	Lowest		Lowest	Lowest	Lowest
100	Lower	Median	Median	Lower		Lowest	Lower	Lowest
101	Lower	Median	Lower	Lower		Lowest	Lower	Lowest
138	Higher	Median	Median	Higher		Higher	Higher	Median
140	Higher	Higher	Higher	Higher		Median	Median	Median

Preliminary Prioritization Rankings

(excerpt from Tables 15, 16, 18, and 19)

Riverine Restoration: #18 of 24

Riverine Protection: #12 of 24

Wetland Restoration: #25 of 28

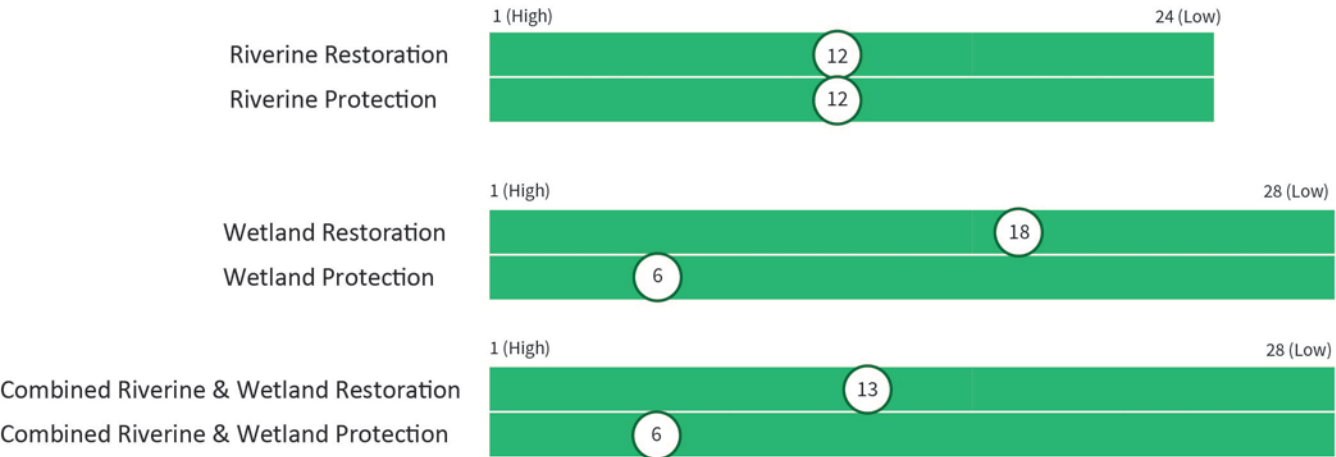
Wetland Protection: #6 of 28

Secondary Prioritization Rankings (Relative Rank Score for Restoration and Protective Actions)

(excerpt from Tables 35,36, and 41)

Tier 1 Forest Blocks for Restoration: Blocks 078 and 100

Tier 1 Forest Blocks for Protection: None





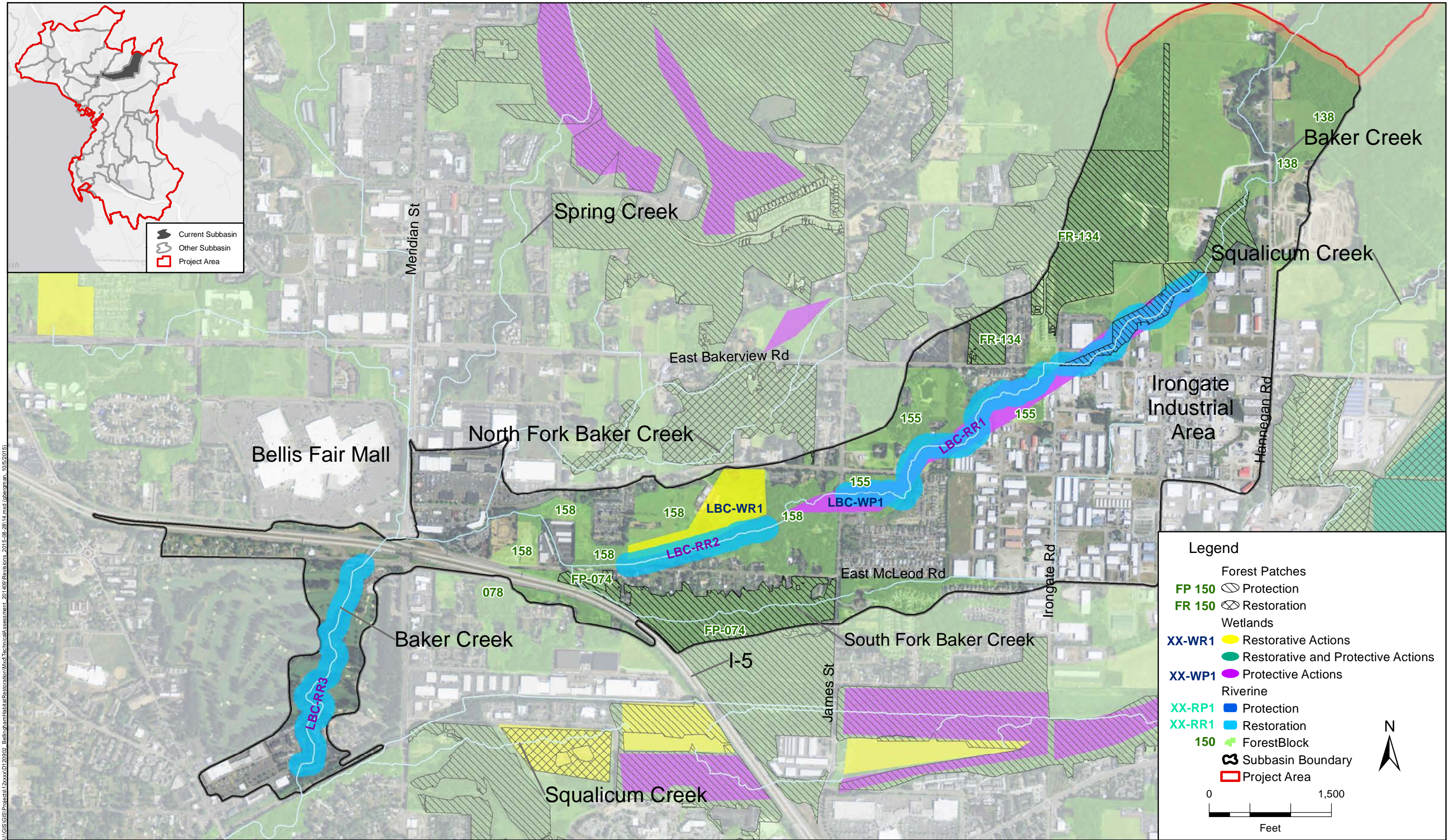




Figure 21. Lower Baker Creek Sub-watershed: HRTA Tier 1 Summary

Riverine Existing Condition - Relative Functional Condition Ratings

(excerpt from Table 3)

Flow Variation Function	Surface Storage Function	Biodiversity Maintenance	Habitat Creation and Maintenance	Chemical Regulation	Thermo-regulation
Median	Lower	Median	Median	Lowest	Median

Wetland Existing Condition - Relative Functional Condition Ratings

(excerpt from Table 4)

Surface Water Storage	Nitrogen Removal	Pathogen Removal	Organic Matter Export/Contribution	Sediment/Phosphorus Removal	Wildlife Habitat	Carbon Sequestration
Higher	Median	Higher	Higher	Highest	Higher	Median

Forest Existing Condition -Relative Functional Condition Ratings

(excerpt from Table 5)

Block ID Number	Biodiversity Function Score	System Maturity Attribute Score	Lifeform Diversity Attribute Score	Habitat Community Attribute Score	Habitat Maintenance Function Score	Habitat Connection and Fragmentation Attribute Score	Vegetation Structure Attribute Score
074	Median	Median	Median	Lower	Median	Median	Higher
134	Highest	Higher	Higher	Highest	Highest	Highest	Higher
138	Higher	Median	Median	Higher	Higher	Higher	Median
155	Median	Lower	Lowest	Median	Median	Median	Median
158	Median	Higher	Median	Median	Median	Median	Lower

Preliminary Prioritization Rankings

(excerpt from Tables 15 through 18)

Riverine Restoration: #11 of 24

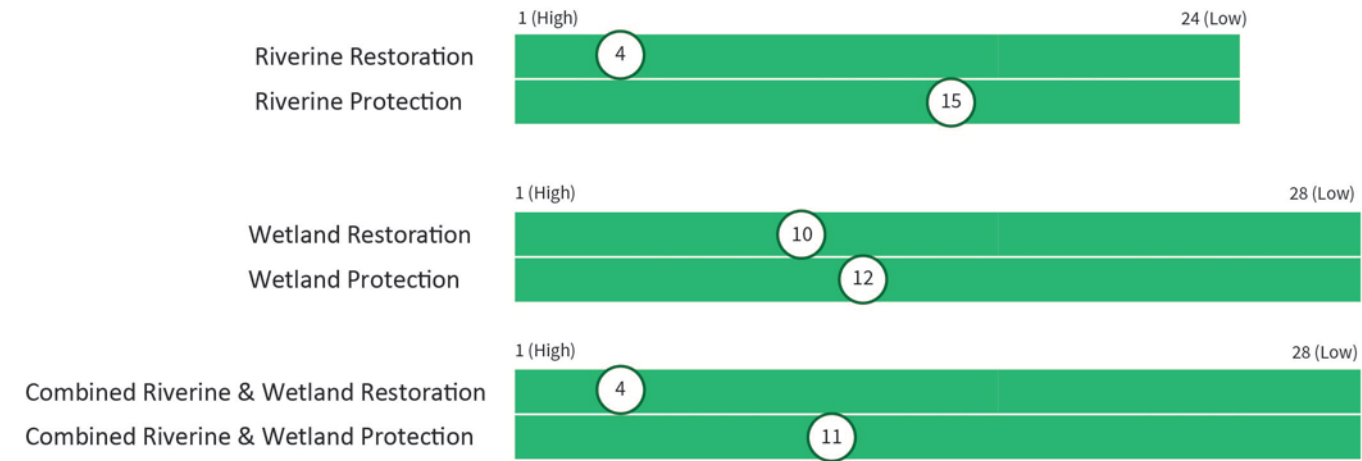
Riverine Protection: #15 of 24

Wetland Restoration: #17 of 28

Wetland Protection: #12 of 28

Secondary Prioritization Rankings (Relative Rank Score for Restoration and Protective Actions)

(excerpt from Tables 35,36, and 41)



Tier 1 Forest Blocks for Restoration: None

Tier 1 Forest Blocks for Protection: Block 134



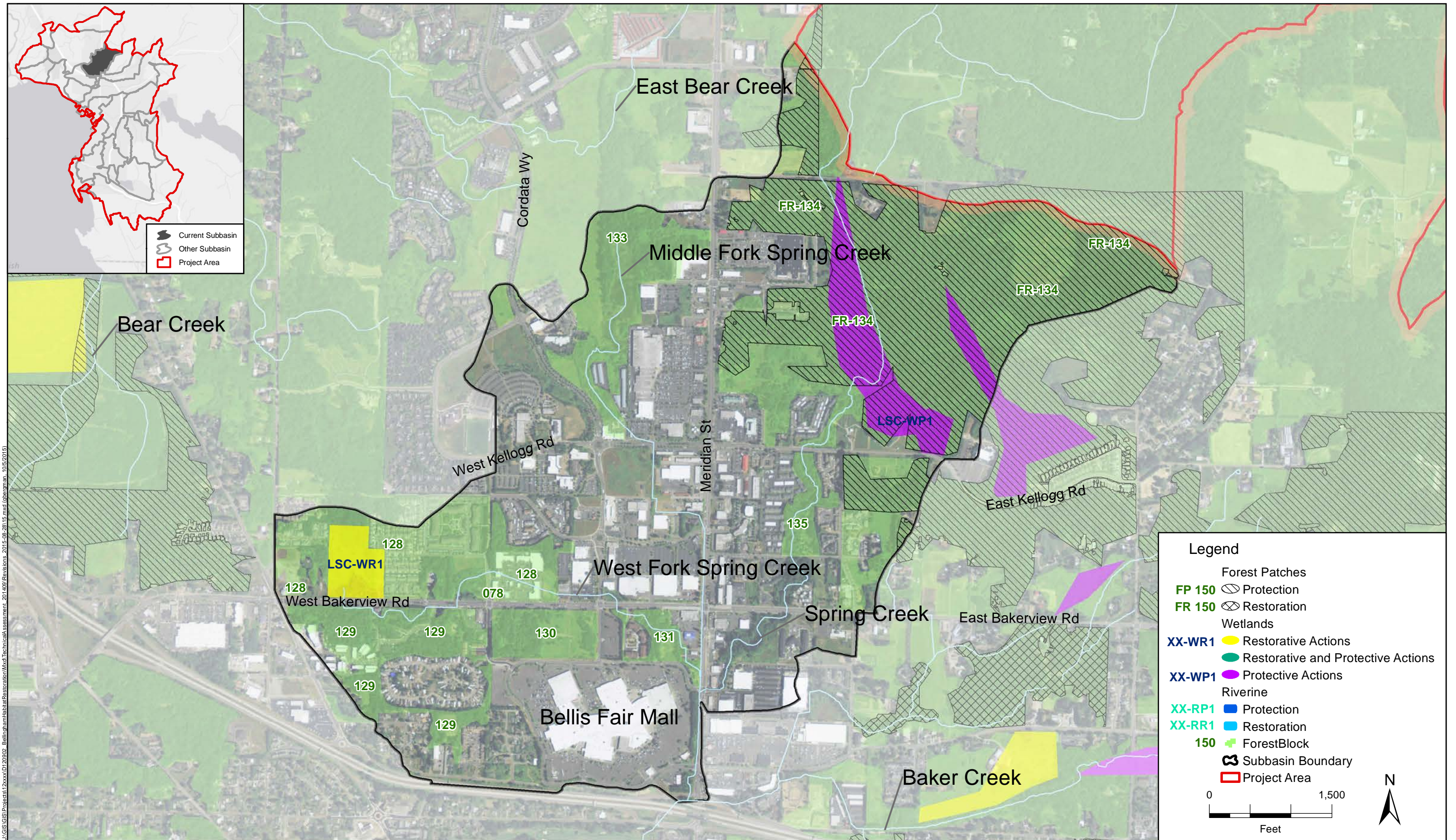




Figure 23. Lower Spring Sub-watershed: HRTA Tier 1 Summary

Riverine Existing Condition - Relative Functional Condition Ratings

(excerpt from Table 3)

Flow Variation Function	Surface Storage Function	Biodiversity Maintenance	Habitat Creation and Maintenance	Chemical Regulation	Thermo-regulation
Lower	Lower	Highest	Median	Lower	Higher

Wetland Existing Condition - Relative Functional Condition Ratings

(excerpt from Table 4)

Surface Water Storage	Nitrogen Removal	Pathogen Removal	Organic Matter Export/Contribution	Sediment/Phosphorus Removal	Wildlife Habitat	Carbon Sequestration
Lower	Median	Median	Lower	Higher	Median	Lower

Forest Existing Condition -Relative Functional Condition Ratings

(excerpt from Table 5)

Block ID Number	Biodiversity Function Score	System Maturity Attribute Score	Lifeform Diversity Attribute Score	Habitat Community Attribute Score		Habitat Maintenance Function Score	Habitat Connection and Fragmentation Attribute Score	Vegetation Structure Attribute Score
128	Higher	Lower	Lower	Higher		Median	Median	Median
129	Median	Lowest	Median	Higher		Higher	Median	Higher
130	Median	Lowest	Higher	Higher		Lowest	Lowest	Lower
131	Lowest	Lowest	Higher	Lowest		Lower	Lowest	Lower
133	Lower	Median	Higher	Median		Lower	Lowest	Median
134	Higher	Higher	Higher	Higher		Higher	Higher	Higher
135	Lowest	Lower	Median	Lowest		Lower	Lower	Lower

Preliminary Prioritization Rankings

(excerpt from Tables 15, 16, 18, and 19)

Riverine Restoration: #17 of 24

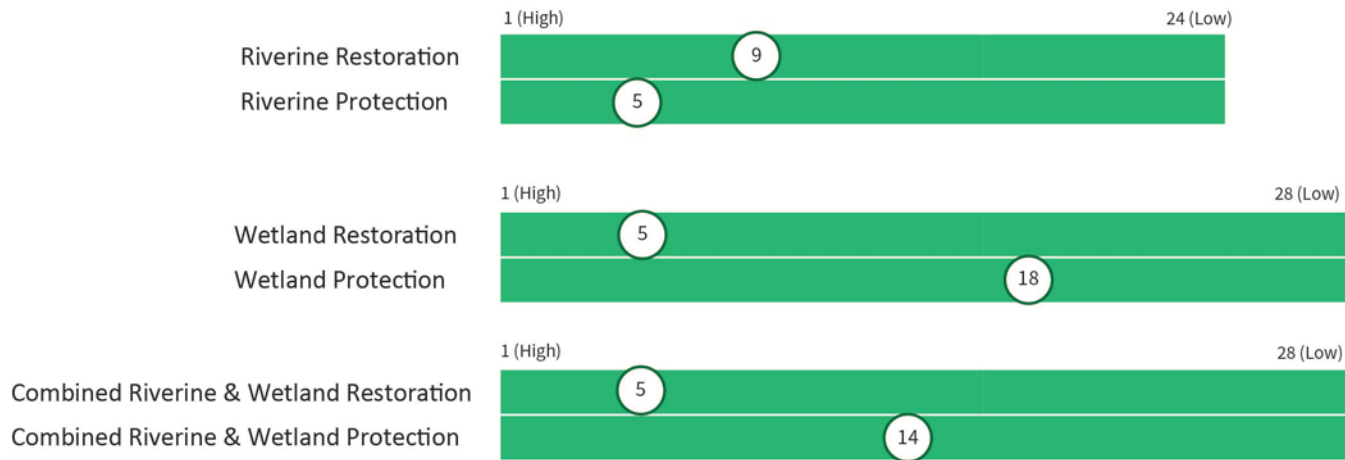
Riverine Protection: #5 of 24

Wetland Restoration: #12 of 28

Wetland Protection: #18 of 28

Secondary Prioritization Rankings (Relative Rank Score for Restoration and Protective Actions)

(excerpt from Tables 35,36, and 41)



Tier 1 Forest Blocks for Restoration: None

Tier 1 Forest Blocks for Protection: Block 134



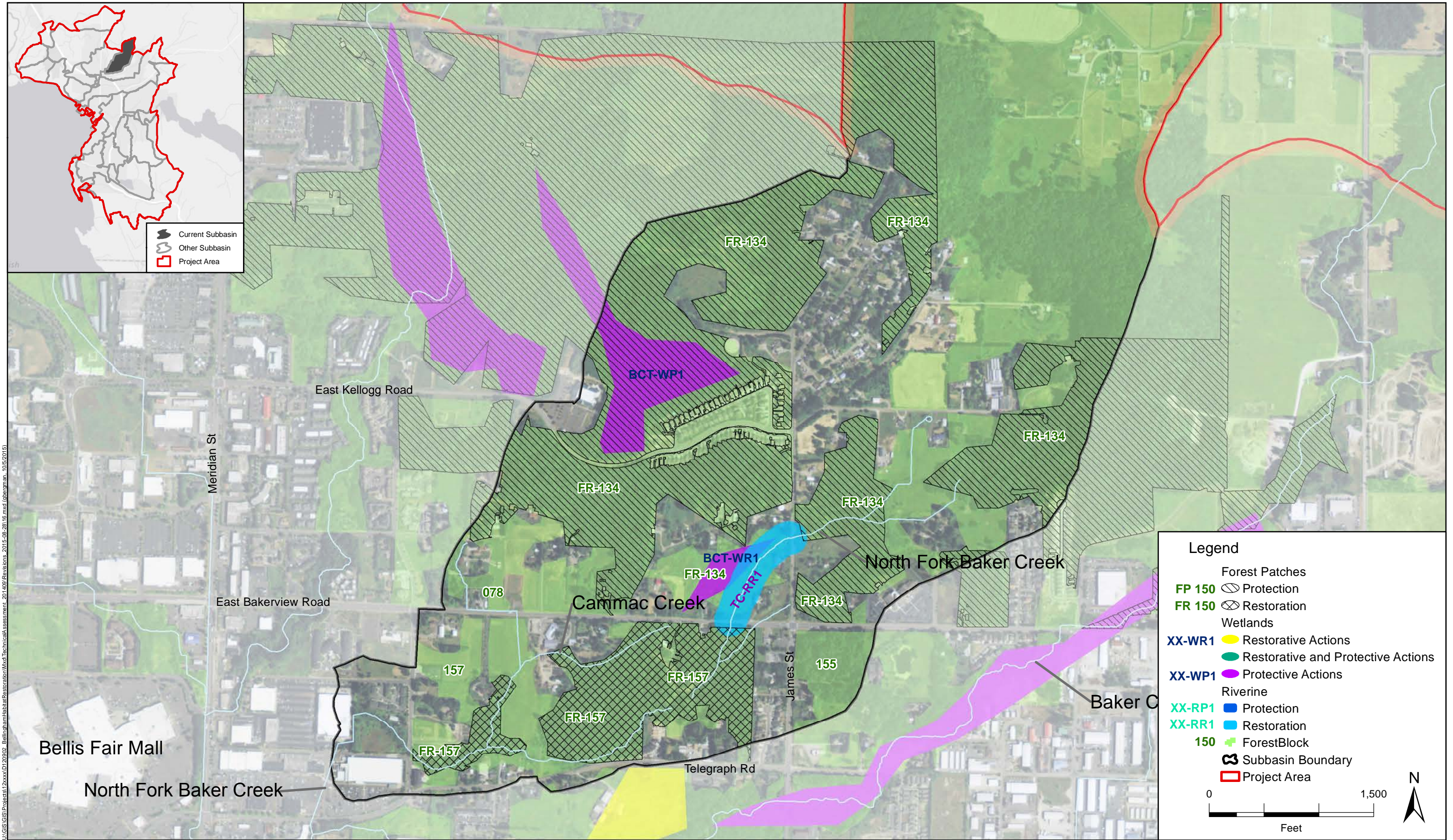




Figure 25. Baker Creek Tributary Sub-watershed: HRTA Tier 1 Summary

Riverine Existing Condition - Relative Functional Condition Ratings

(excerpt from Table 3)

Flow Variation Function	Surface Storage Function	Biodiversity Maintenance	Habitat Creation and Maintenance	Chemical Regulation	Thermo-regulation
Median	Median	Lowest	Lower	Lowest	Median

Wetland Existing Condition - Relative Functional Condition Ratings

(excerpt from Table 4)

Surface Water Storage	Nitrogen Removal	Pathogen Removal	Organic Matter Export/Contribution	Sediment/Phosphorus Removal	Wildlife Habitat	Carbon Sequestration
Higher	Highest	Highest	Median	Higher	Higher	Higher

Forest Existing Condition -Relative Functional Condition Ratings

(excerpt from Table 5)

Block ID Number	Biodiversity Function Score	System Maturity Attribute Score	Lifeform Diversity Attribute Score	Habitat Community Attribute Score	Habitat Maintenance Function Score	Habitat Connection and Fragmentation Attribute Score	Vegetation Structure Attribute Score
134	Highest	Higher	Higher	Highest	Highest	Highest	Higher
157	Lower	Median	Lowest	Median	Median	Lower	Median

Preliminary Prioritization Rankings

(excerpt from Tables 15, 16, 18, and 19)

Riverine Restoration: #5 of 24

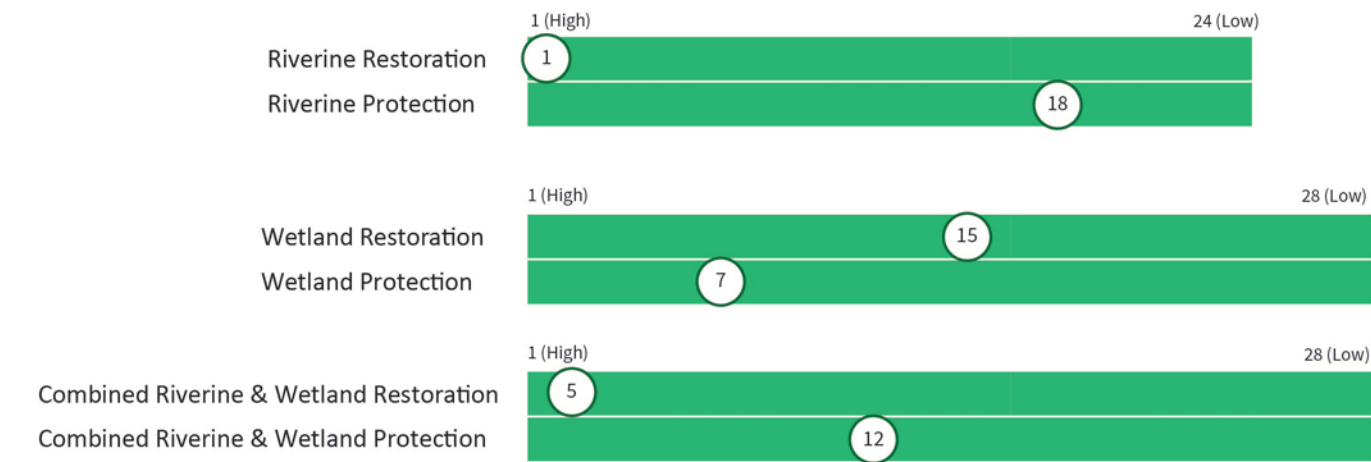
Riverine Protection: #22 of 24

Wetland Restoration: #22 of 28

Wetland Protection: #7 of 28

Secondary Prioritization Rankings (Relative Rank Score for Restoration and Protective Actions)

(excerpt from Tables 35,36, and 41)



Tier 1 Forest Blocks for Restoration: Block 157

Tier 1 Forest Blocks for Protection: Block 134



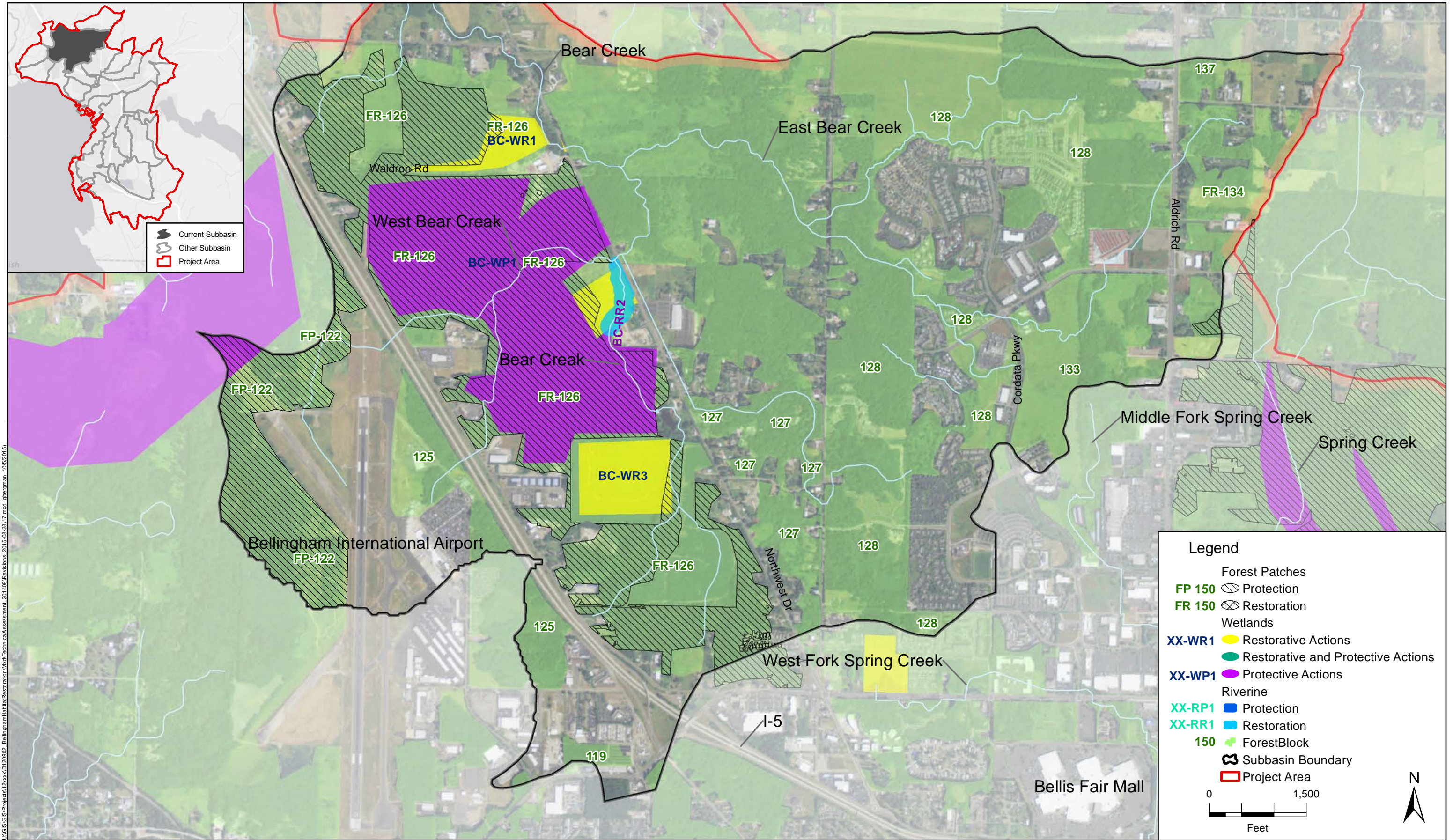




Figure 27. Bear Creek Sub-watershed: HRTA Tier 1 Summary

Riverine Existing Condition - Relative Functional Condition Ratings

(excerpt from Table 3)

Flow Variation Function	Surface Storage Function	Biodiversity Maintenance	Habitat Creation and Maintenance	Chemical Regulation	Thermo-regulation
Lower	Highest	Median	Lower	Median	Higher

Wetland Existing Condition - Relative Functional Condition Ratings

(excerpt from Table 4)

Surface Water Storage	Nitrogen Removal	Pathogen Removal	Organic Matter Export/Contribution	Sediment/Phosphorus Removal	Wildlife Habitat	Carbon Sequestration
Higher	Highest	Higher	Higher	Highest	Highest	Median

Forest Existing Condition -Relative Functional Condition Ratings

(excerpt from Table 5)

Block ID Number	Biodiversity Function Score	System Maturity Attribute Score	Lifeform Diversity Attribute Score	Habitat Community Attribute Score		Habitat Maintenance Function Score	Habitat Connection and Fragmentation Attribute Score	Vegetation Structure Attribute Score
119	Median	Lowest	Median	Median		Median	Median	Higher
125	Lower	Lower	Lowest	Median		Lowest	Lowest	Lower
126	Higher	Lower	Higher	Higher		Higher	Higher	Higher
127	Higher	Lower	Lowest	Higher		Higher	Highest	Higher
128	Higher	Lower	Lower	Higher		Median	Median	Median
133	Lower	Median	Highest	Median		Lower	Lowest	Median

Preliminary Prioritization Rankings

(excerpt from Tables 15, 16, 18, and 19)

Riverine Restoration: #16 of 24

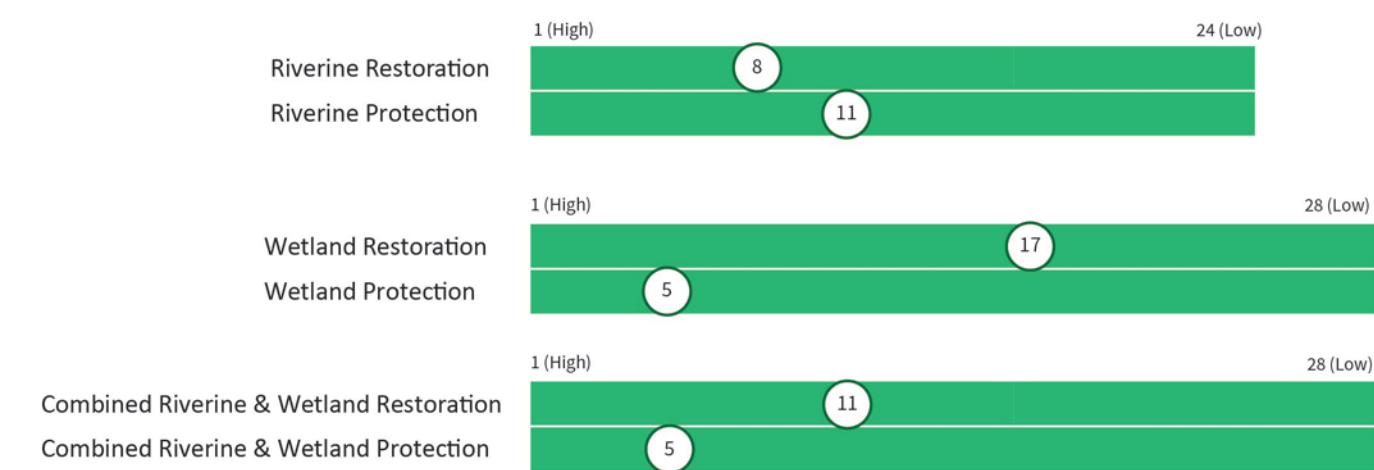
Riverine Protection: #11 of 24

Wetland Restoration: #24 of 28

Wetland Protection: #5 of 28

Secondary Prioritization Rankings (Relative Rank Score for Restoration and Protective Actions)

(excerpt from Tables 35,36, and 41)



Tier 1 Forest Blocks for Restoration: None

Tier 1 Forest Blocks for Protection: None