

ALLEGRO BUS

WHY BUY A TIFFIN MOTORHOME?

The Best Limited Warranty in the Business

10-YEAR UNITIZED CONSTRUCTION WARRANTY

THE STRUCTURAL INTEGRITY OF THE ENTIRE COACH IS GUARANTEED FOR THE NEXT 10 YEARS. THIS INCLUDES WALL SEPARATION AND INNER FRAME WEAKNESS.

5-YEAR "HYDRA-VAC" LAMINATION WARRANTY

WE GUARANTEE AGAINST ALL EXTERIOR FIBERGLASS DELAMINATION OR WALL SEPARATION.

We can make these guarantees, and no one else can come close to them, because we take the extra steps and make the extra investment in the building methods and materials that support these extraordinary guarantees. It's not the cheapest way to build motorhomes, but it is the best way. It's the Tiffin way.

Service After the Sale

The feeling of freedom, of being able to go anywhere you want, is something that can't really be put into words. It's kind of like the feeling you get when buying a Tiffin. It's a freedom, too. A kind of confidence and peace of mind that you just can't get from other manufacturers. We not only stand behind every coach we sell, but we stand behind every customer as well. Because we don't want anything to detract from your unique experiences exploring the world in a Tiffin. So when you slide behind the wheel of one of our motorhomes, just look over your shoulder. There's an entire company riding right there behind you—every mile of the way.



DEALER:

www.tiffinmotorhomes.com



TIFFIN MOTORHOMES, Inc. 105 2nd Street NW Red Bay, Alabama 35582 CALL 256.356.8661 FAX 256.356.8219

The following names are registered trademarks of Tiffin Motorhomes: Open Road®, Phaeton®, Allegro®, Allegro Bay®, Allegro Bus®, Zephyr®, Roughing It Smoothly®, and Pusher®.



'05

WHEREVER
YOU GO, WE GO.



**Comes with a backyard
that changes when
your mood does.**

You never know what each new day will hold. That's what's so nice about traveling in the new 2005 Allegro Bus from Tiffin Motorhomes—whatever experience you're in the mood for, you can make it happen as easily as turning a key. With its big diesel pusher, it's got plenty of power to get you where you're going. And with amenities like the Ultra Leather® upholstery, surround sound stereo and side-by-side refrigerator/freezer, you'll be arriving in comfort. But best of all, it's a Tiffin and it's backed by one of the best warranties around. Which means that of all the moods you might experience, regret won't be one of them.



ALLEGRO BUS COCKPIT



From the Ultra leather Flexsteel® seats atop the STURDY CHASSIS, the driver and front passenger have a completely unobstructed view of the road, as the wipers rest in the horizontal position on the LARGE ONE PIECE WINDSHIELD.

With the seats facing forward, the RESTYLED DASH POD, featuring a COLOR REAR MONITOR, is within easy reach; when unlocked and swiveled around, the seats provide ADDITIONAL SEATING in the living room, which features a standard enclosed SURROUND SOUND SYSTEM, AUTOMATIC SATELLITE DISH and an optional 32" LCD TV.

ALLEGRO BUS LIVING AREA



MINERAL

The SPACIOUS LIVING AREA is highlighted by the SEVEN-FOOT HIGH CEILING and is accented by the amount of CABINET STORAGE throughout. We offer far more cabinets than most other manufacturers. Each of ours is manufactured on-site and

has SOLID HARDWOOD DOORS. The redesigned passenger slide can accommodate a full size sofa on select models. The galley features SOLID SURFACE COUNTERTOPS, a stainless steel carousel MICROWAVE/CONVECTION OVEN and a two burner cook top.

ALLEGRO BUS BEDROOM



MINERAL



Besides the many OVERHEAD CABINETS, there's ADDITIONAL STORAGE in a chest of drawers that includes a LAUNDRY HAMPER. Dual-controlled overhead READING LIGHTS, a

standard 20" FLAT SCREEN TV and a generator on/off switch located next to the optional king size bed add to the CONVENIENCE and FUNCTIONALITY of the SPACIOUS area.

ALLEGRO BUS BATHROOM

FABRICS & CABINETS



The bathroom is highlighted with BRUSHED NICKEL ACCENTS and affords a great deal of space. Along with our frames and cabinets, all fiberglass parts are manufactured locally, helping to ensure the most stringent quality control.

CHESTNUT



Bedroom



Bedroom Accent



Sofa



Living Area Accent



Natural Maple

MINERAL



Bedroom



Bedroom Accent



Sofa



Living Area Accent



Oak

SOUTH PACIFIC



Bedroom



Bedroom Accent



Sofa



Living Area Accent



Stained Cherry

CARPETS



Clay



Wheat



Natural Cherry



Walnut

Our fabric designs and choices of wood grain are sure to suit every taste. All cabinet finishes are available in combination with all fabric schemes.

EXTERIOR PAINT COLORS

ALLEGRO BUS FLOORPLANS '05



SILVER SAND FULL BODY



SUNLIT SAND FULL BODY



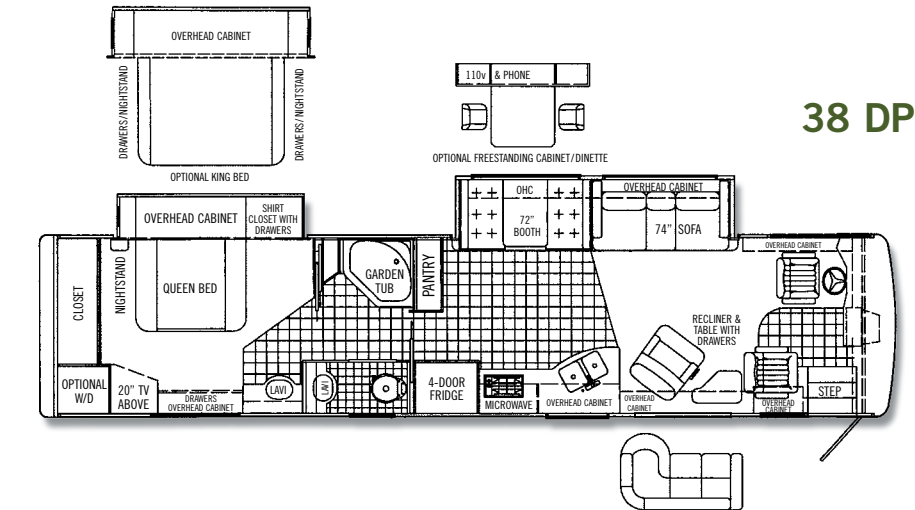
NASA FULL BODY



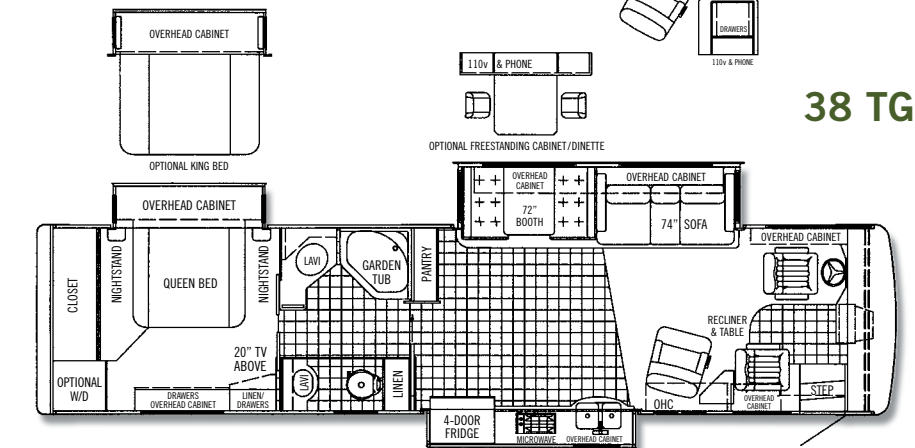
STONE FULL BODY



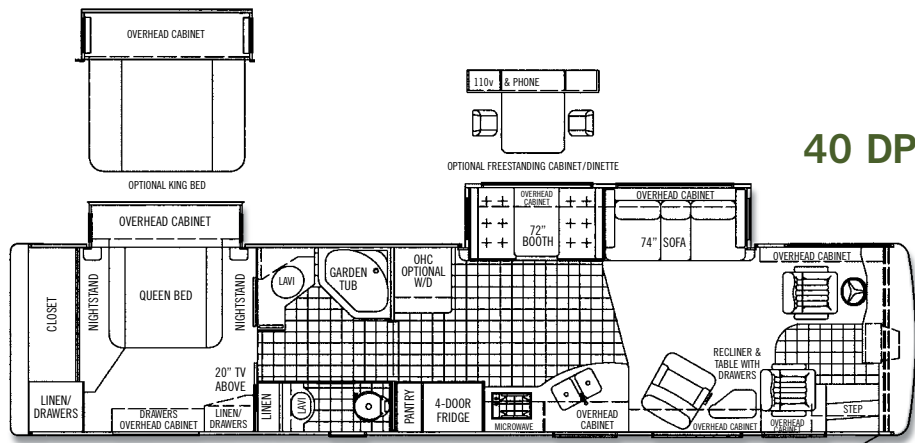
DELTA FULL BODY



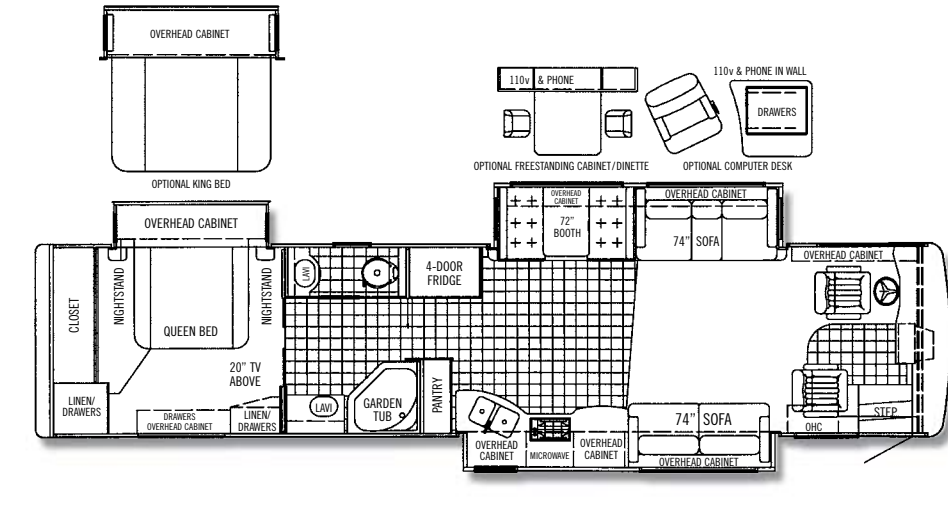
38 DP



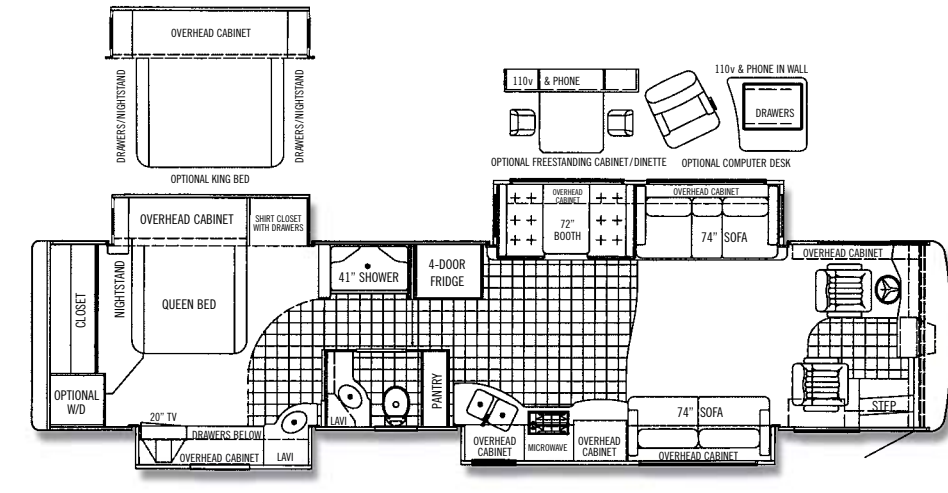
38 TGP



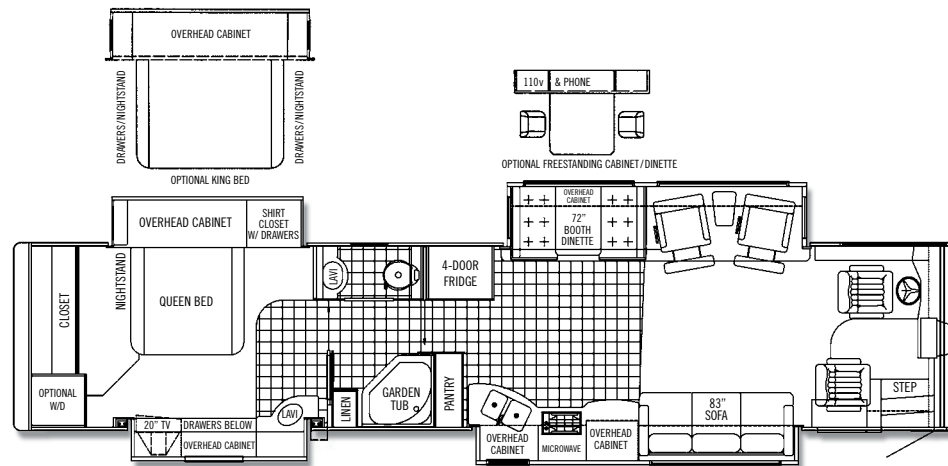
40 DP



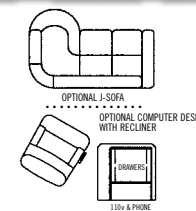
40 TSP



40 QDP



42 QDP
NEW FLOORPLAN



ADDITIONAL FLOORPLANS MAY BE AVAILABLE ON OUR WEBSITE.
www.tiffinmotorhomes.com

We offer five different exterior full body paint packages. Aside from our unparalleled customer service, one of the things that Tiffin has been known for over the years is innovative floor plans.

AUTOMOTIVE

STANDARD EQUIPMENT ON ALL MODELS:			
• Cast Aluminum Wheels	• Allison 3000MH 6-Speed Auto with Lock-up (Torque Converter)	• ABS Brakes	• Emergency Start Switch
• Michelin Tires	• Cummins 400 Engine / Side Radiator	• Fully Automatic Leveling Jacks	• Exhaust Brake
• Air Ride (4 Bags)	• Air Brakes with Automatic Slack Adjusters	• Cruise Control	

FREIGHTLINER CHASSIS	MODEL	38 DP	38 TGP	40 DP	40 TSP	40 QDP	42 QDP
GVWR		32,000	32,000	32,000	32,000	32,000	44,600
GAWR – Front		12,000	12,000	12,000	12,000	12,000	14,600
GAWR – Rear		20,000	20,000	20,000	20,000	20,000	20,000
GAWR – Tag Axle		NA	NA	NA	NA	NA	10,000
GCWR		42,000	42,000	42,000	42,000	42,000	54,600
UVW		23,760	23,760	24,240	24,820	24,820	TBD
Alternator Amps		160	160	160	160	160	160
Wheel Base		262"	262"	276"	276"	276"	306
Tire Size		275/80R 22.5	275/80R 22.5	275/80R 22.5	275/80R 22.5	275/80R 22.5	275/80R 22.5
Trailer Hitch Capacity		10,000	10,000	10,000	10,000	10,000	10,000
Fuel Tank (Gallons)		150	150	150	150	150	150

OVERALL	MODEL	38 DP	38 TGP	40 DP	40 TSP	40 QDP	42 QDP
Overall Length – Approximately		38' 11"	38' 11"	40' 4"	40' 4"	40' 4"	42' 6"
Overall Height with Roof Air (Maximum)		12' 7"	12' 7"	12' 7"	12' 7"	12' 7"	12' 7"
Interior Height		84"	84"	84"	84"	84"	84"
Overall Width		101"	101"	101"	101"	101"	101"
Interior Width		96"	96"	96"	96"	96"	96"
Fresh Water (Gallons)		90	90	90	90	90	90
Black Water (Gallons)		46	46	46	46	46	46
Grey Water (Gallons)		70	70	70	70	70	70
LPG Tank (Gallons; can only be filled to 80% capacity)		35	35	35	35	35	24
Minimum Garage Height		13'	13'	13'	13'	13'	13'

STRUCTURAL

STANDARD EQUIPMENT ON ALL MODELS:	
• Laminated Floor, Sidewall & Roof	• Steel / Aluminum Reinforced Structure

EXTERIOR

STANDARD EQUIPMENT ON ALL MODELS:			
• Fiberglass Front & Rear Caps	• Dual Pane Tinted Windows	• Four - 6v House Batteries	• Fiberglass Roof
• Dual Fuel Fills	• Exterior Patio Light	• 2000 Watt Inverter	• Spot Light with Remote
• Full Body Paint	• Electric Door Awning	• Custom Full-Width Mud Flap	• Air Horns
• Large One-Piece Tinted Windshield	• Electric Patio Awning	• 50 Amp Service	• Automatic Satellite Dish
• 7.5 Kw Onan Generator with Manual Slideout	• Window Awning Package	• Power Cord Reel - 50 Amp	• TV Antenna
• Heated Power Mirrors with Remote Adjustment (Chrome)	• Slideout Awnings	• Park Telephone Ready	• CB Radio Antenna
• Single Motor Intermittent Wiper	• Pass-thru Basement Storage	• Cable Ready TV	• Power Fantastic Roof Vent with 3 speed Fan
• Gel-Coat Fiberglass Walls	• Exterior Flip-up Storage Doors with Gas Shocks	• Black Holding Tank Flush System	• 2 - 15,000 BTU Low Profile Roof A/C with Heat Pump
• Fog Lights	• Single Handle Lockable Storage Door Latches	• Exterior Rinse Hose with Soap Dispenser and Paper Towel Holder	• Roof Ladder
• Deadbolt Front Entrance Door	• Heated Water and Holding-Tank Compartments	• 110v Exterior Receptacle	• Sony® Color Backup Camera and Monitor
• Double Electric Step	• Luggage Compartment Lights	• Undercoating	• Water Filter
	• Docking Lights		

	MODEL	38 DP	38 TGP	40 DP	40 TSP	40 QDP	42 QDP
Keyless Entry Door System		0	0	0	0	0	0
Slideout Rooms		2	3	2	3	4	4
Storage Compartment Slideout Tray		0	0	0	0	0	0
In-motion Satellite Dish		0	0	0	0	0	0
Exterior Entertainment Center with 20" TV, AM/FM/CD Player & Speakers		0	NA	0	NA	NA	NA
Exterior Entertainment Center with 13" TV, AM/FM/CD Player & Speakers		NA	NA	NA	0	0	0
Extra Fantastic Fan		0	0	0	0	0	0
10.0 Kw Onan Generator with Manual Slideout		NA	NA	NA	NA	NA	S
3 - 13,500 BTU Low Profile Roof A/C with Heat Pump		NA	NA	NA	NA	NA	S

DRIVER'S COMPARTMENT

STANDARD EQUIPMENT ON ALL MODELS:			
• Entry Floor Light	• Power Ultra Leather Driver Seat (Flexsteel)	• 12v Dash Receptacle	• Power Sun Visors
• Step Switch & 12v Disconnect Switch	• Ultra Leather Passenger Seat with Power Footrest (Flexsteel)	• Tilt / Telescoping Steering Wheel	• Panasonic VCR
• Automotive Padded Dash	• Passenger Seat Console Box with Built-in Magazine Rack	• Dual Dash Fans	• Fire Extinguisher
• Lighted Instrument Panel	• Single In-dash CD Player AM/FM Stereo	• Windshield Privacy Curtain	• Beverage Tray

DRIVER'S COMPARTMENT (cont'd)

	MODEL	38 DP	38 TGP	40 DP	40 TSP	40 QDP	42 QDP
Handheld CB Radio		0	0	0	0	0	0
6 Disc In-dash CD Changer		0	0	0	0	0	0
Rear-View Mirror with Compass		0	0	0	0	0	0
Side-View Camera		0	0	0	0	0	0
32" LCD TV		0	0	0	0	0	0

LIVING AREA/DINETTE

STANDARD EQUIPMENT ON ALL MODELS:	
• Cloth Easy Bed (Flexsteel)	• Booth Dinette with Solid Surface Table Top

	MODEL	38 DP	38 TGP	40 DP	40 TSP	40 QDP	42 QDP
Cloth Recliner (Flexsteel) with End Table (Driver side on 40 TSP & 40 QDP)		S	S	S	O	O	NA
Ultra Leather Euro-Recliner		0	0	0	NA	NA	NA
Ultra Leather Recliner (Flexsteel)		0	0	0	NA	NA	NA
Cloth Magic Bed		0	0	0	0	0	NA
Ultra Leather Magic Bed		0	0	0	0	0	NA
Ultra Leather Love Seat with 62" EZ Bed Sleeper (Flexsteel)		0	NA	0	NA	NA	NA
74" Ultra Leather Sofa Living Room Slide		NA	NA	NA	O	O	NA
Ultra Leather J-Lounge Sofa		0	NA	0	NA	NA	NA
Free Standing Legless Dinette with Solid Surface Table Top with Built-in Cabinets		0	0	0	0	0	O
Computer Desk with Recliner (Driver side on 40 TSP & 40 QDP)		0	NA	0	0	0	NA
Two Recliners with Lounge Table (Driver side)		NA	NA	NA	NA	NA	S
83" Ultra Leather Sofa (Passenger side)		NA	NA	NA	NA	NA	S

KITCHEN

STANDARD EQUIPMENT ON ALL MODELS:			
• Polished Solid Surface Countertops	• Single Lever Sink Faucet with Built-in Sprayer	• Stainless Steel Convection Microwave	
• Solid Surface Sink Covers	• Double Bowl Stainless Steel Sink	• 2-Burner Glass Cooktop	

	MODEL	38 DP	38 TGP	40 DP	40 TSP	40 QDP	42 QDP
Drop-in Oven with 3-Burner Cooktop		0	0	0	0	0	0
4-Door Stainless Steel Refrigerator with Ice Maker		S	S	S	S	S	S
Dishwasher (Not available with drop-in oven)		NA	O	NA	O	O	O

BATH

STANDARD EQUIPMENT ON ALL MODELS:				
• Two Medicine Cabinets with Vanity Lights	• Solid Surface Vanity Top & Bowl	• Fiberglass Molded Tub or Shower	• Skylight in Shower	• Electric Flush Toilet

	MODEL	38 DP	38 TGP	40 DP	40 TSP	40 QDP	42 QDP
Linen Closet Above Toilet		S	S	S	S	NA	S

BEDROOM

STANDARD EQUIPMENT ON ALL MODELS:			
• Inner Spring Pillow-top Mattress	• Solid Surface Night Stand Tops	• Flat Screen TV	• Carbon Monoxide Detector
• Bed Comforter with Throw Pillows	• Cedar-lined Wardrobe	• Laundry Hamper	• LPG Leak Detector
• Decorative Mirrored Headboard			

	MODEL	38 DP	38 TGP	40 DP	40 TSP	40 QDP	42 QDP
King Bed		0	0	0	0	0	0

GENERAL INTERIOR

STANDARD EQUIPMENT ON ALL MODELS:			
• 7' Ceilings	• 12v Fluorescent Lights	• Wall-to-Wall Carpeting in Bedroom & Living Room	• Tank Level Monitor System
• Soft Touch Vinyl Ceiling	• Enclosed Surround Sound Speakers	• Black-out Day/Night Shades in Bedroom & Living Room	• Smoke Detector
• Raised Panel Cabinet Doors	• Plumbed for Washer / Dryer with Cabinet	• Porcelain Tile Flooring in Kitchen, Bath & Entrance Landing	• Central Vacuum Cleaner
• Soft Cloth Covered Cabinet Shelves	• Power Roof Vent with 3-Speed Fan	• 10-Gal DSI Gas / Electric Water Heater (NA on 42 QDP)	• Air Driven Step Well Cover

	MODEL	38 DP	38 TGP	40 DP	40 TSP	40 QDP	42 QDP
Oak Cabinetry		0	0	0	0	0	0
Natural Maple Cabinetry		0	0	0	0	0	0
Walnut Cabinetry		0	0	0	0	0	0
Natural Cherry Cabinetry		0	0	0	0	0	0
Stained Cherry Cabinetry		0	0	0	0	0	0
Washer / Dryer		0	0	0	0	0	0
Hydraulic Heating System		0	0	0	0	0	S
One 35,000 BTU and One 20,000 BTU Ducted Furnace		S	S	NA	NA	NA	NA
One 42,000 BTU and One 20,000 BTU Ducted Furnace		NA	NA	S	NA	NA	NA
Two 30,000 BTU Ducted Furnaces		NA	NA	NA	S	S	NA

All options may not be available in all models. Because of progressive improvements, specifications, standard and optional equipment are subject to change without notice or obligation.