

**FUSIBILI BS88 – TIPO gG****Caratteristiche generali:**

- Tipo prodotto: fusibili a lama BS88;
- Serie standard;
- Tensione nominale: 415V AC / 250V DC;
- Quattro diverse dimensioni;
- Caratteristica d'intervento: gG;
- Conformi alle norme: BS88-1, IEC 60269-1;
- Corpo in steatite;
- Contatti in rame argentato;
- Corrente nominale: da 2A a 100A;
- Potere di interruzione: 80kA (AC) / 40kA (DC);
- Confezione minima: 1 pezzi;

BS88 FUSES – gG TYPE**General characteristics:**

- *Product type: blade type BS88 fuses;*
- *Standard series;*
- *Rated voltage: 415V AC / 250V DC;*
- *Four different dimensions;*
- *Time-current characteristic: gG;*
- *Conform to standards: BS88-1, IEC 60269-1;*
- *Steatite body;*
- *Silver plated copper contacts;*
- *Rated current: from 2A to 100A;*
- *Breaking capacity: 80kA (AC) / 40kA (DC);*
- *Minimum packaging: 1 piece;*

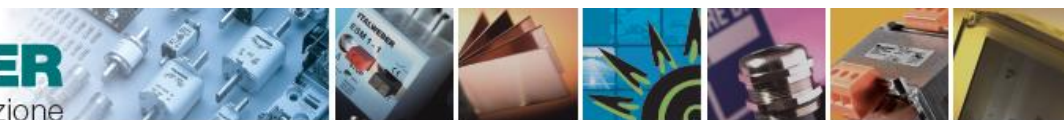
Foto dei prodotti / Products images

Pagine totali del documento: 5

Document total pages: 5

Ultimo aggiornamento: 11 novembre 2015

Last updated: 11th November 2015



Codici e caratteristiche principali:

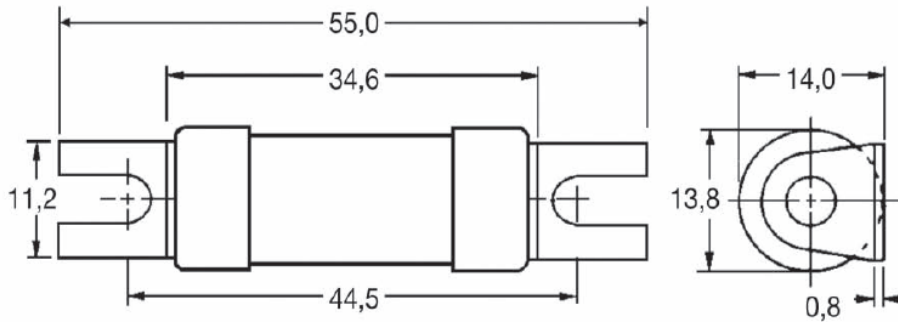
Codes and basic characteristics:

Codice Code	Tipo Type	Interasse (mm) Distance between fixing holes (mm)	Corrente nominale Rated current	Tensione nominale Rated voltage	Conf Pack
1730002	W-NIT-02	44,5	2A	415V	1
1730004	W-NIT-04	44,5	4A	415V	1
1730006	W-NIT-06	44,5	6A	415V	1
1730010	W-NIT-10	44,5	10A	415V	1
1730016	W-NIT-16	44,5	16A	415V	1
1730020	W-NIT-20	44,5	20A	415V	1
1730025	W-NIT-25	44,5	25A	415V	1
1730032	W-NIT-32	44,5	32A	415V	1
 					
1731002	W-TIA-02	73,5	2A	415V	1
1731004	W-TIA-04	73,5	4A	415V	1
1731006	W-TIA-06	73,5	6A	415V	1
1731010	W-TIA-10	73,5	10A	415V	1
1731016	W-TIA-16	73,5	16A	415V	1
1731020	W-TIA-20	73,5	20A	415V	1
1731025	W-TIA-25	73,5	25A	415V	1
1731032	W-TIA-32	73,5	32A	415V	1
 					
1732040	W-TIS-40	73,5	40A	415V	1
1732050	W-TIS-50	73,5	50A	415V	1
1732063	W-TIS-63	73,5	63A	415V	1
 					
1733032	W-TCP-32	94	32A	415V	1
1733040	W-TCP-40	94	40A	415V	1
1733050	W-TCP-50	94	50A	415V	1
1733063	W-TCP-63	94	63A	415V	1
1733080	W-TCP-80	94	80A	415V	1
1733100	W-TCP-100	94	100A	415V	1

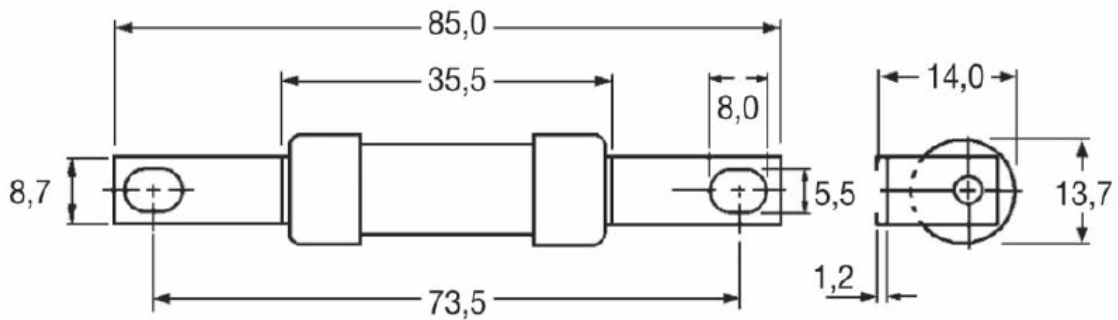


Disegno (dimensioni in mm) / Drawing (dimensions in mm):

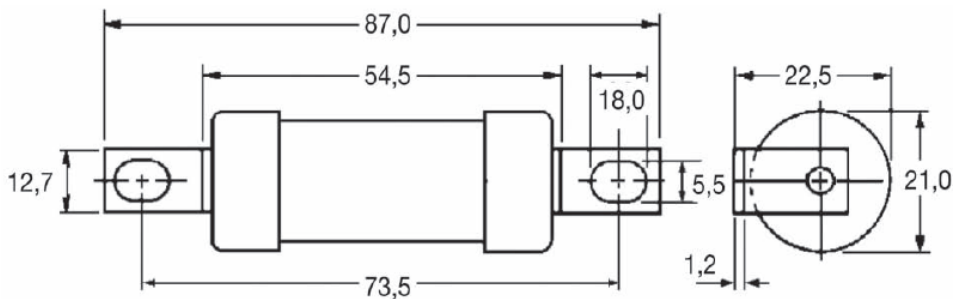
Fusibili tipo W-NIT / Fuses type W-NIT



Fusibili tipo W-TIA / Fuses type W-TIA



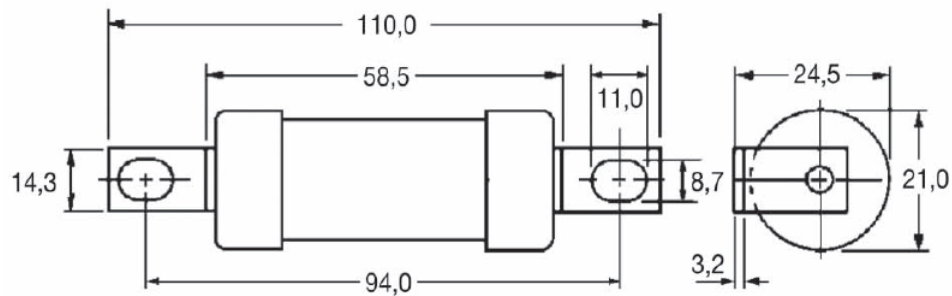
Fusibili tipo W-TIS / Fuses type W-TIS





Disegno (dimensioni in mm) / Drawing (dimensions in mm):

Fusibili tipo W-TCP / Fuses type W-TCP



ITALWEBER S.p.A

Sede unica: Via E. Fermi 40/42 - 20057 Assago (MI) - Italy
Telefono +39 02 93977.1 - Telefax +39 02 93904565
E-MAIL: info@italweber.it - info@pec.italweber.it

Capitale Sociale i.v. Euro 655.200,00
C.C.I.A.A. Milano N. 565572
Trib. Milano Reg.Soc.108694, Vol. 2869
C.F.-P.IVA 00737760157





Curve caratteristiche tempo / corrente

Time / current characteristic curves

