

TIRE REPAIRS KITS & CABINETS



(A) TIRE REPAIR CENTER - Bowes' Tire Repair Center helps you make your job's easier and faster by organizing all of your tire repair supplies in one convenient place. This attractive cabinet is a combination of these three components:

TR 14600 Cabinet

(B) MULTI PLAST KIT - Multi Plast is a one of a kind outside-in repair made for tubeless tire injuries. Because of its unique design, Multi Plast fits the injury, no matter what its shape.

TR 37510 Multi Plast Kit Contains:

- **TC 22162** Multi Plast Bonding Compound, 8 oz.
- **TC 37504** Leak Finder, 8 oz.
- **TT 37506** Passenger Needle
- **TR 37503** Multi Plast Refill Tube, 240"
- **TT 37558** Empty Multi Plast Canister Assembly

(C) HEAVY DUTY OFF ROAD KIT - A kit specifically designed for large, off road tires where down time is lost money.

TR 37524 Off Road HD Repair Kit Contains:

- **TT 37525** Earth Mover Insertion Needle, 10"
- **TC 37504** Leak Finder, 8 oz.
- **TC 22162** Multi Plast Bonding Compound, 8 oz.
- **TR 37511** Multi Plast Refill Tube, 600"
- **TC 37505** Empty Leak Finder Bottle, 8 oz.

(D) RUBBER REPAIR KIT - Repairs bicycle tubes and many other rubber articles.

TR 11005 Rubber Repair Kit Contains: 3 - 1" patches, 1 - 3" patch, solvent and a small buffer

(E) SUPER MULTI CURE KIT - A cord reinforced cured rubber insert with a face gum design allows this insert to vulcanize to the tire.

TT 38010 Super Multi Cure Kit Contains:

- **TT 37216** Pistol Grip Insert Tool
- **TT 37211** Radial Awl/Probe
- 50 each 3.75" Super Multi Cure Inserts

(F) ULTRA PLUG KIT - This new design of plug makes outside-in repairs as easy as 1-2-3.

TR 15021 Ultra Plug Kit Contains:

- **TR 15020** Ultra Plugs
- **TR 15019** Ultra Plug Gun
- **TC 22158** B-133 Vulcanizing Cement, 8 oz.
- **TT 15022** 2 Stage Knurled Probe

(G) MULTI SEAL KIT - A thick, soft, cord type repair which can be used in tread and sidewall areas.

TR 37523 Multi Seal Repair Kit Contains:

- **TC 22187** Universal Cement, 8 oz.
- **TT 37216** Split Eye Insertion Tool
- **TR 37499** Multi Seal Repairs

(H) RADIAL PLAST REPAIR KIT - The same unique design as Multi Plast but pre-cut into 7" lengths for use in passenger tires.

TR 37520 Radial Plast Kit Contains:

- **TC 22158** B-133 Vulcanizing Cement
- **TT 37213** Radial Plast Insertion Needle
- **TR 14082** Medium Featheredge Patches
- 40 each Radial Plast Repair Inserts

INSIDE REPAIRS - PASSENGER



(A) RADIAL FLEX REPAIRS - A premium repair. Patches are specially fabric reinforced to match the flexing encountered in radial and conventional tires. These top of the line patches actually strengthen the area of the injury.

Part # and Description	Ply	Size	Box Qty.
TR 14095 Standard	1	2 5/8"	25/Box
TR 14096 Medium	2	3 1/2"	20/Box
TR 14097 Large	2	4 5/16"	10/Box
TR 14098 Extra Large		5 7/16"	8/Box
TR 14101 Standard	3	4 1/2" x 5"	5/Box



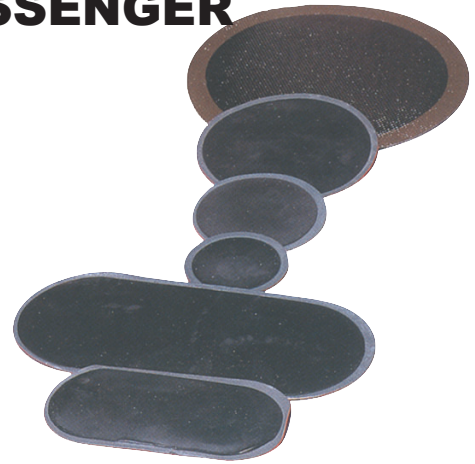
(B) CENTER REINFORCED RADIAL PATCHES - These center ply reinforced repairs offer another alternative for repairing radial applications.

Part # and Description	Size	Box Qty.
TR 15042 Small Oval	1 11/16" x 3"	10/Box
TR 15043 Large Oval	2 7/8" x 4 3/8"	10/Box
TR 15045 Agricultural - 3 ply	7 1/2" x 10"	5/Box



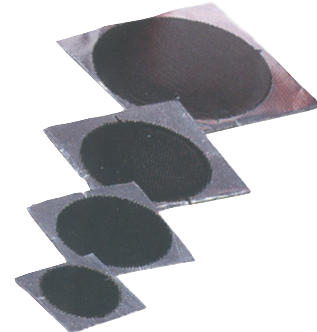
(C) ALL PURPOSE RADIAL PATCHES - An economical, rubber reinforced patch for radial tires designed for nail hole injuries.

Part # and Description	Size	Box Qty.
TR 14806 Small Round	1 3/4"	100/Box
TR 14807 Medium Round	2"	50/Box
TR 14808 Large Round	3"	25/Box
TR 14809 Small Oval	1 1/2" x 2 1/2"	50/Box
TR 14042 Large Oval	1 7/8" x 3 7/8"	25/Box



(D) FEATHER EDGE - Very flexible, yet superior strength make "Feather Edge" repairs for inner tubes and inner liner of radial and bias ply tires.

Part # and Description	Size	Box Qty.
TR 14081 Small Round	1 11/16"	40/Box
TR 14082 Medium Round	2 1/4"	30/Box
TR 14083 Large Round	3 1/8"	20/Box
TR 14088 Extra Large Round	5"	10/Box
TR 14085 Small Oval	1 7/16" x 2 7/16"	30/Box
TR 14086 Medium Oval	1 7/8" x 3 7/8"	20/Box
TR 14087 Large Oval	2 5/8" x 5 7/8"	20/Box



(E) FOIL BACK FEATHER EDGE - A thinner patch ideal for tube and tubeless tires.

Part # and Description	Size	Box Qty.
TR 14077 Mini Round	1 1/4"	80/Box
TR 14078 Small Round	1 3/4"	50/Box
TR 14079 Medium Round	2 3/16"	40/Box
TR 14080 Large Round	3 1/8"	20/Box



(F) CENTER FILLED RADIAL PATCHES - Center filled patches designed to flow to fill small injuries.

Part # and Description	Size	Box Qty.
TR 14043 Small Square	2 1/4"	25/Box
TR 14044 Medium Square	3 1/8"	15/Box

INSIDE REPAIRS - LARGE NON-RADIAL



(A) REINFORCED LARGE TIRE BIAS REPAIRS - RT Bias Repairs are extra strong molded permanent repairs for bias ply tires which offer both strength and flexibility. These chemically self vulcanizing repairs are shaped for the best fit making repairs faster and easier and eliminating the need for separate shoulder/crown and sidewall repairs.

Part # and Description	Ply	Size	Box Qty.
TR 15011 RT10	2	3.5" x 3.5"	20/Box
TR 15012 RT11	2	4.5" x 4.5"	10/Box
TR 15013 RT12	4	5.5" x 5.5"	10/Box
TR 15014 RT13	4	6.5" x 6.5"	10/Box
TR 15015 RT14	4	7.5" x 7.5"	10/Box
TR 15016 RT15	4	8.5" x 8.5"	10/Box
TR 15017 RT16	7	10.5" x 10.5"	5/Box
TR 15018 RT17	9	12.5" x 12.5"	5/Box



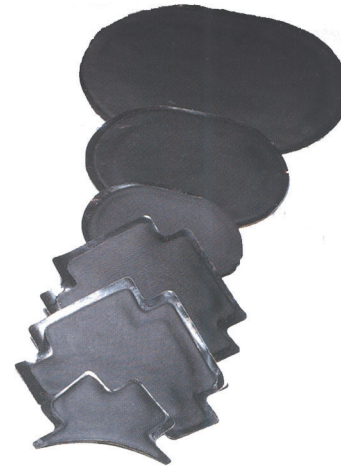
(B) TIREPAIR - CLOVERLEAF - Unique design allows better stitching and is available in 6 sizes including 2 sidewall repairs which are designed to fit the curvature of the bead when repairing a sidewall break.

Part # and Description	Ply	Size	Box Qty.
TR 14041 Nail Hole		2"	25/Box
TR 14062 Regular	4	4"	25/Box
TR 14063 Medium	4	6"	25/Box
TR 14064 Medium Sidewall	4	5.5"	25/Box
TR 14065 Large	4	7"	25/Box
TR 14066 Large Sidewall	4	6.5"	25/Box



(D) TIREPAIR - TRUCK AND BUS SECTIONS - Made of high strength cord molded into rubber in 5 and 6 ply designs; this is a strong repair which remains highly flexible and is ideal for repairing large off-road tires as well as truck and bus.

Part # and Description	Ply	Size	Box Qty.
TR 14050 Heavy Duty	5	7.5"	12/Box
TR 14052 Medium Trk & Bus	6	11" Oval	12/Box
TR 14053 Large Trk & Bus	6	13" Oval	12/Box



(E) EMERGENCY BOOT REPAIRS - Chop cord emergency boots. These boots are designed for temporary repairs of tube type agricultural, earthmover and large off the road tires. An economical means for on-site repairing large breaks which save time and money when they count.

Part # and Description	Size	Box Qty.
TR 15000 EB-03 Round	3"	50/Box
TR 15002 EB-07 Round	4.5"	50/Box
TR 15003 EB-09 Oval	4" x 5"	25/Box
TR 15004 EB-11 Oval	5.5" x 8"	25/Box
TR 15005 EB-13 Oval	7" x 10"	25/Box
TR 15006 EB-15 Oval	9" x 12"	10/Box
TR 15007 EB-17 Oval	10" x 14"	10/Box
TR 15008 EB-20 Sidewall	5" x 5"	25/Box
TR 15009 EB-22 Sidewall	8" x 8"	25/Box
TR 15010 EB-24 Sidewall	10" x 10"	10/Box

INSIDE REPAIRS



INSIDE REPAIRS - LARGE RADIAL



(A) CX FLEX PATCHES - Rayon cord reinforced patches designed to withstand the higher pressures and deflection stresses of truck tires. Chemical or heat application can be used.

(B) DUAL CURE PATCHES - Dual cure patches are advanced repairs which can be applied with either heat or chemical methods to repair crown, shoulder or sidewall injuries in passenger, truck, agricultural and earthmover tires.

Part # and Description	Size	Box Qty.
TR 14102	CX10	1 3/4" x 3" 20/Box
TR 14103	CX12	2 1/4" x 4" 10/Box
TR 14104	CX14	3 3/4" x 4" 10/Box
TR 14105	CX20	2 7/8" x 5" 10/Box
TR 14106	CX22	3" x 6" 10/Box
TR 14107	CX24	3" x 8 1/4" 10/Box
TR 14125	CX25	4 1/2" x 4 7/8" 10/Box
TR 14135	CX35	5 1/4" x 7 1/4" 10/Box
TR 14108	CX40	4" x 7 1/2" 10/Box
TR 14109	CX42	5" x 10" 10/Box
TR 14110	CX44	5" x 13" 10/Box
TR 14145	CX45	7 3/4" x 9 1/8" 5/Box

Part # and Description	Size	Box Qty.
TR 15033	DX10	1 7/8" x 3" 20/Box
TR 1503318	DX11	1 3/4" x 3" 20/Box
TR 15034	DX12	2 1/4" x 4" 10/Box
TR 15035	DX14	3 1/2" x 3 3/4" 10/Box
TR 15036	DX20	2 7/8" 10/Box
TR 15037	DX22	1 1/2" x 2 1/2" 10/Box
TR 15038	DX24	1 7/8" x 3 7/8" 10/Box
TR 15039	DX40	3" 10/Box
TR 15040	DX42	1 1/2" x 2 1/2" 10/Box
TR 15041	DX44	1 7/8" x 3 7/8" 10/Box

TRUCK TIRE CX/DX APPLICATIONS

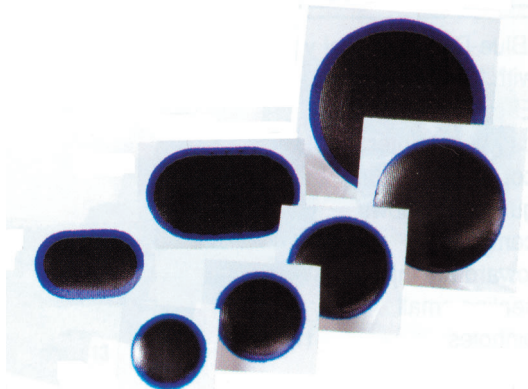
CX/DX APPLICATION CHARTS.

LIGHT TRUCK TIRE CX/DX APPLICATIONS

Tread	Sidewall	TO 7.5" USE
1/4"		CX/DX12
1/2"	1 Cable x 1 1/2"	CX/DX20
3/4"	3/8" x 2"	CX/DX22
1"	3/4" x 2"	CX/DX40

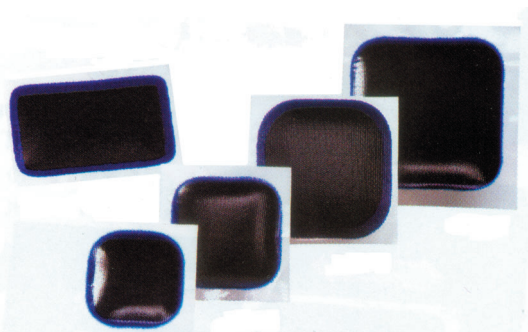
Tread	Sidewall	TO 11.00" USE	11.00" TO 14.00" USE
1/4"		CX/DX20	CX/DX20
3/8"		CX/DX20	CX/DX40
	2 Cables x 2"	CX/DX24	CX/DX24
	2 Cables x 2 1/2"	CX/DX24	CX/DX40
3/4"	3/8" x 1 1/2"	CX/DX40	CX/DX40
	3/8" x 2 1/2"	CX/DX40	CX/DX42
	3/8" x 3"	CX/DX40	CX/DX42
1"		CX/DX42	CX/DX42
	3/8" x 4"	CX/DX42	CX/DX44
1 1/2"	3/4" x 3"	CX/DX44	CX/DX44
	3/4" x 4"	CX/DX44	CX/DX44
	1" x 4"	CX/DX44	

TUBE & UNIVERSAL REPAIRS



(A) "EURO-STYLE" TUBE REPAIRS - These tube repairs will vulcanize chemically or with heat. These repairs are a unit-molded style with premium blue vulcanizing gum on a white mylar backing, slit for removal.

Part # and Description	Size	Size (mm)	Box Qty.
TR 22632	Mini Round	1 1/4"	32 100/Box
TR 22638	X-Sm Round	1 1/2"	38 50/Box
TR 22645	Small Round	1 3/4"	45 40/Box
TR 22655	Medium Round ...	2 1/8"	55 30/Box
TR 22679	Large Round	3"	79 20/Box
TR 22690	X-Large Round ...	3 1/2"	90 10/Box
TR 226115	Giant Round	4 3/4"	121 10/Box
TR 22672	Mini Oval	1 1/8"x1 3/4" ...	29x45 50/Box
TR 22673	X-Sm Oval	1 1/2"x2 1/2" ...	38x64 50/Box
TR 22674	Small Oval	1 7/8"x3"	48x76 40/Box
TR 22675	Medium Oval .	2 1/4"x4 1/4" ..	57x108 ... 30/Box
TR 22676	Large Oval	2 3/8"x6"	60x150 ... 20/Box



(B) "EURO-STYLE" UNIVERSAL - Designed for chemical or heat vulcanization, this is a unit molded style repair unit with premium blue vulcanizing gum. This repair is molded onto a white mylar backing which is slit for easy removal.

Part # and Description	Size	Size (mm)	Box Qty.
TR 22307	Mini Square	1 1/2"	38 50/Box
TR 22307/30	Mini Square	1 1/2"	38 30/Box
TR 22309	Sm Square	2"	50 50/Box
TR 22309/25	Sm Square	2"	50 25/Box
TR 22309SB	in Sm Bucket	2"	50 150/Box
TR 22309LB	in Lg Bucket	2"	50 350/Box
TR 22311	Med Square	2 3/8"	60 50/Box
TR 22311SB	in Sm Bucket ...	2 3/8"	60 75/Box
TR 22311LB	in Lg Bucket ...	2 3/8"	60 200/Box
TR 22312	Large Square ..	2 3/4"	70 50/Box
TR 22313	Small Oval ...	1 3/4"x3"	45x76 10/Box



(C) "BLUE-DOT" CENTER FLOW UNIVERSAL - These chemical vulcanizing repairs are black with black vulcanizing gum on a blue poly backing. Each repair unit carries a center core of dark blue gum which flows centrifugally toward the injury, sealing small pinholes.

Part # and Description	Size	Size (mm)	Box Qty.
TR 22306	Small Square ..	1 3/4"	45 50/Box
TR 22306SB	in Sm Bucket ...	1 3/4"	45 250/Box
TR 22306LB	in Lg Bucket ...	1 3/4"	45 600/Box
TR 22308B	Medium Square	2 1/8"	55 25/Box
TR 22308BSB	in Sm Bucket ...	2 1/8"	55 200/Box
TR 22308BLB	in Lg Bucket ...	2 1/8"	55 500/Box
TR 22310	Large Square	3"	76 15/Box



(D) SQUARE UNIVERSAL - Perfect for nailhole repairs in passenger and light truck tires. These repairs have gray vulcanizing gum and are available with red or blue poly backing.

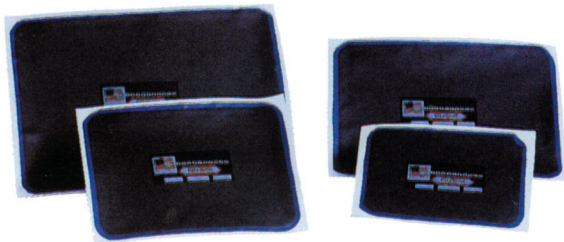
Part # and Description	Size	Size (mm)	Box Qty.
TR 22115	Small/Red	1 3/4"	45 30/Box
TR 22115SB	in Sm Bucket ...	1 3/4"	45 300/Box
TR 22115LB	in Lg Bucket ...	1 3/4"	45 600/Box
TR 22115B	Small/Blue	1 3/4"	45 30/Box
TR 22115BSB	in Sm Bucket ...	1 3/4"	45 300/Box
TR 22115BLB	in Lg Bucket ...	1 3/4"	45 600/Box
TR 22116	Medium/Red ...	2 1/8"	54 30/Box
TR 22116SB	in Sm Bucket ...	2 1/8"	54 200/Box
TR 22116LB	in Lg Bucket ...	2 1/8"	54 400/Box
TR 22116B	Medium/Blue ...	2 1/8"	54 30/Box
TR 22116BSB	in Sm Bucket ...	2 1/8"	54 200/Box
TR 22116BLB	in Lg Bucket ...	2 1/8"	54 400/Box

RADIAL REPAIRS



(A) "EURO-STYLE" C-O-I RADIAL - This style is a molded style repair unit with a one-piece appearance. Each of the radially directed plies is specifically end-cut and wrapped to "float" inside the patch, preventing end cracking or break out common in other brands. The face stock used will vulcanize chemically, in low temperature or high heat curing systems when applied with our vulcanizing cement.

Part # and Description	Size	Size (mm)	Box Qty.
TR 22708	Radial 10, 1 ply 1 3/4"x3"	45x76	20/Box
TR 22710	Radial 10, 1 ply 2"x3"	50x76	20/Box
TR 22712	Radial 12, 1 ply 2 1/4"x4"	57x102	10/Box
TR 22712A	Radial 12, 1 ply . 2 3/4"x4 1/2"	70x114	10/Box
TR 22714	Radial 14, 1 ply 3 1/2"x4"	90x102	10/Box
TR 22720	Radial 20, 2 ply 3"x5"	76x125	10/Box
TR 22722	Radial 22, 2 ply 3"x6"	76x150	10/Box
TR 22724	Radial 24, 2 ply 3"x8 1/2"	76x215	10/Box
TR 22725	Radial 25, 3 ply 4 1/2"x5"	115x125	10/Box
TR 22726	Radial 26, 3 ply ... 3"x10 1/2"	76x267	10/Box
TR 22728	Radial 28, 3 ply 3"x13"	76x330	10/Box
TR 22735	Radial 35, 3 ply . 5 1/4"x7 1/4"	133x185	10/Box
TR 22740	Radial 40, 3 ply 4"x7 1/2"	102x190	10/Box
TR 22742	Radial 42, 4 ply 5"x10"	125x254	10/Box
TR 22744	Radial 44, 4 ply 5"x13"	125x330	10/Box
TR 22745	Radial 45, 4 ply 7 3/4"x9"	197x228	5/Box



(B) "EURO-STYLE" C-O-I RADIAL AGRICULTURAL - When installing repair units in agricultural tires that will contain calcium, coat entire patch with inner liner sealer after installation.

Part # and Description	Size	Size (mm)	Box Qty.
TR 22780	Radial 80, 2 ply 6"x7 3/4"	153x197	5/Box
TR 22782	Radial 82, 3 ply ... 7 1/2"x10"	190x254	5/Box
TR 22784	Radial 84, 3 ply 8 1/2"x11 1/2"	216x292	5/Box
TR 22786	Radial 86, 3 ply 9 3/4"x13 1/2"	248x343	5/Box



(C) USA STYLE C-O-I RADIAL - This style is black with gray vulcanizing gum on a blue poly backing. Each reinforcing ply is individually end-wrapped to deflect tire flexing stresses in a unique manner. The tie-gum construction eliminates the potential for delamination common in other brands. The face stock used will vulcanize chemically, in low temperature systems when applied with our vulcanizing cement.

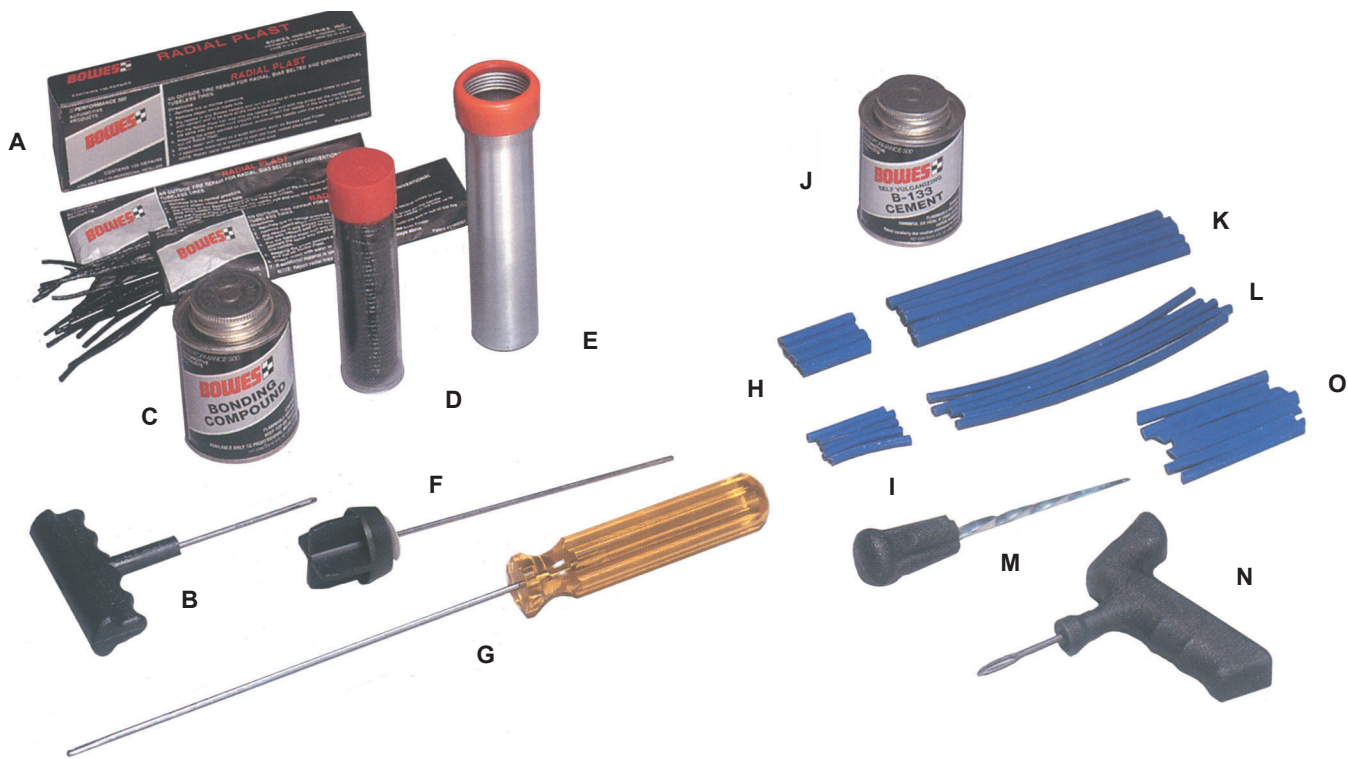
Part # and Description	Size	Size (mm)	Box Qty.
TR 22808	Radial 10, 1 ply 1 3/4"x3"	45x76	20/Box
TR 22810	Radial 10, 1 ply 2 1/4"x3"	57x76	20/Box
TR 22812	Radial 12, 1 ply 2 1/4"x4"	57x102	10/Box
TR 22814	Radial 14, 1 ply 3 3/4"x4"	95x102	10/Box
TR 22820	Radial 20, 2 ply 3"x5"	76x125	10/Box
TR 22822	Radial 22, 2 ply 3"x6"	76x150	10/Box
TR 22824	Radial 24, 2 ply 3"x8 1/2"	76x215	10/Box
TR 22825	Radial 25, 3 ply 4 1/2"x5"	115x125	10/Box
TR 22826	Radial 26, 3 ply ... 3"x10 1/2"	76x267	10/Box
TR 22828	Radial 28, 3 ply 3"x13"	76x330	10/Box
TR 22835	Radial 35, 3 ply . 5 1/4"x7 1/4"	133x185	10/Box
TR 22840	Radial 40, 3 ply 4"x7 1/2"	102x190	10/Box
TR 22842	Radial 42, 4 ply 5"x10"	125x254	10/Box
TR 22844	Radial 44, 4 ply 5"x13"	125x330	10/Box
TR 22845	Radial 45, 4 ply 7 1/4"x9"	197x228	5/Box



(D) USA STYLE C-O-I RADIAL AGRICULTURAL - When installing repair units in agricultural tires that will contain calcium, coat entire patch with inner liner sealer after installation.

Part # and Description	Size	Size (mm)	Box Qty.
TR 22880	Radial 80, 2 ply 6"x7 3/4"	153x197	5/Box
TR 22882	Radial 82, 3 ply ... 7 1/2"x10"	190x254	5/Box
TR 22884	Radial 84, 3 ply 8 1/2"x11 1/2"	216x292	5/Box
TR 22886	Radial 86, 3 ply 9 3/4"x13 1/2"	248x343	5/Box

INSERT REPAIRS - PASSENGER & TRUCK



RADIAL PLAST - The same design of repair as Multi Plast, Radial Plast is an ideal repair for passenger and small tires. Conveniently cut into 7" lengths. Radial Plast is a quick and economical repair and because there is no need for reaming, you have no worries about damaging a customer's tire by cutting cords.

Part # and Description

- (A) **TR 37526** Radial Plast Inserts - 5 Envelopes of 20
- (B) **TT 37213** Radial Plast T Handle Insert Tool - Pistol Grip
- (C) **TC 22162** Bonding Compound, 8 oz. Can

MULTI PLAST - A unique, patented outside-in repair developed by BOWES. Unlike conventional rubber plug repairs, Multi Plast is manufactured using a hollow woven tube of nylon filled with polysulfide. This allows the repair to form fit to the injury. Because of this design, injuries do not have to be reamed for the repair to seal the injury. This is important because radial belt strands are not damaged by reamers. All of these features make Multi Plast the ideal off the road repair for almost any size injury.

Part # and Description

- (D) **TR 37503** Multi Plast Refill Tube 240"
- TR 37511** Multi Plast Refill Tube 600"
- (E) **TR 37558** Empty Multi Plast Canister with Lock Ring
- TT 37507** Plastic Lock Ring for Multi Plast Canister
- TR 37506** Passenger Needle
- (F) **TT 37509** 9" Heavy Duty Truck Tire Needle
- (G) **TT 37525** 10" Earth Mover Needle

MULTI CURE - A tubeless tire outside-in repair which penetrates the injury sealing both the inner liner and broken cables and cords. The unique face gum design and the use of B-133 vulcanizing cement allow the repair to become a permanent part of the tire.

Part # and Description

- (H) **TR 37491** 2" Oval Multi Cure - Box of 20 Inserts
- (I) **TR 37490** 2" Round Multi Cure - Box of 20 Inserts
- (J) **TC 22158** B-133 Vulcanizing Cement, 8 oz. Can
- (K) **TR 15024** 9" Oval Multi Cure - Box of 20 Inserts
- (L) **TR 15023** 9" Round Multi Cure - Box of 20 Inserts

SUPER MULTI CURE - Similar to standard Multi Cure, Super Multi Cure utilizes a reinforcement cord which strengthens the repair. Super Multi Cure can be used for both tread and sidewall injuries in radial and bias tubeless tires. Use with B-133 vulcanizing cement on insertion to insure a permanent repair.

Part # and Description

- (M) **TT 38012** Straight Radial Awl
- (N) **TT 33216** Pistol Grip Insert Tool
- (O) **TR 15025** Super Multi Cure Pass. 3.75" - Box of 50 rnd
- TR 15026** Super Multi Cure Truck 7.5" - Box of 25 Oval

RUBBER VULCANIZING REPAIRS



(A) "X-TRA SMOOTH" INSERTS - These inserts are the easiest and most effective way of "filling the injury" and are designed for use in passenger or truck, radial or bias-ply tires. These inserts will fully vulcanize either chemically or in a heat curing system. #TR-12107 and #TR-12107L are installed using #TR-12101 insert gun.

Part # and Description	Size	Size (mm)	Box Qty.
------------------------	------	-----------	----------

TR 12100	X-tra Smooth Plug Kit, contains: 1 - TR-12101, 1 - TR-12107, 1 - TR-14008, and 1 - TR-14211		
TR 15019	Plug Insert Gun		
TR 15020	Cleaning Brush		
TR 12107	1 3/8" Orange	1/4"	6 50/Box
TR 12107L	1 7/8" Orange	1/4"	6 30/Box
TR 12108	1 7/8" Gray	3/8"	10 30/Box



(C) MUSHROOM STYLE INSERTS - These inserts are designed to "fill the injury" in passenger or truck, radial or bias-ply tires. While TR-12234 and TR-12239 are temporary repairs sealing by compression only, TR-12213 and TR-12214 are coated with a special orange vulcanizing gum to ensure a fully vulcanized repair either chemically or in a heat curing system.

Part # and Description	Size	Size (mm)	Box Qty.
------------------------	------	-----------	----------

TR 37210	X-tra Smooth Plug Kit, contains: 2 - TR-12113, 1 - TR-12214, 1 - TR-12241, and 1 - TR-14008, 1 - TR-14211		
TR 37211	Orange Insert	5/16"	8 25/Box
TR 37212	Orange Insert	7/16"	11 15/Box
TR 37211B	Black Insert	5/16"	8 25/Box
TR 37212B	Black Insert	7/16"	11 15/Box
TR 37213	Mushroom Plug Gun w/Small & Large Nozzles		
TR 37214	Small Gun Nozzle		
TR 37215	Large Gun Nozzle		



(B) GRAY GUM POLY WRAPPED INSERTS - These poly wrapped inserts are available in two lengths: 2" (50mm) for passenger and 8" (203mm) for truck applications. These vulcanizing inserts are designed to "fill the injury" and may be used in radial or bias-ply tires. Poly wrapped inserts will vulcanize chemically or in a heat curing system. Use any side load insert needle for easy installation.

Part # and Description	Size	Size (mm)	Box Qty.
------------------------	------	-----------	----------

TR 37490	2" Round (50mm)	3/16"	5 20/Box
TR 15023	8" Round (203mm)	3/16"	5 20/Box
TR 37491	2" Oval (50mm)	1/4"x5/16"	6x8 20/Box
TR 15024	8" Oval (203mm)	1/4"x5/16"	6x8 20/Box
TR 15024L	8" Lg Oval (203mm)	5/16"x7/16"	8x11 10/Box

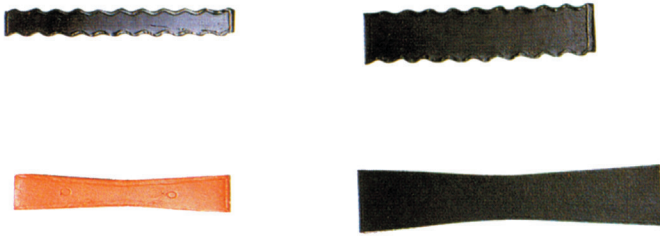


(D) FIBRE-SEAL INSERTS - These inserts are gray vulcanizing gum coated, wrapped in blue protective poly, and have a reinforcing core of fibre, designed to allow their easy insertion through steel belted passenger or truck radial tires. Unlike competitive products that are fabric throughout (forcing the injury to take the shape of the insert), Fibre-Seal have a larger amount of rubber coating, allowing the insert to conform to the injury. Fibre-Seal inserts will vulcanize chemically or in a heat curing system.

Part # and Description	Size	Size (mm)	Box Qty.
------------------------	------	-----------	----------

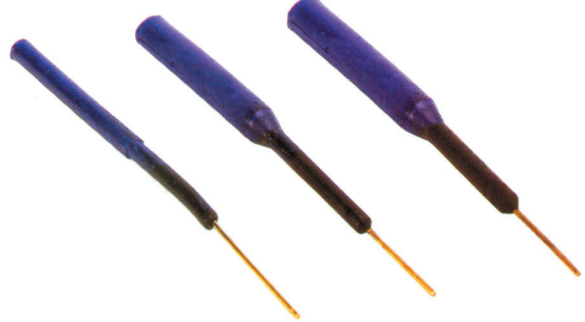
TR 15025	Insert	3 3/4"	8 25/Box
TR 15025S	Insert	3 3/4"	6 25/Box
TR 15025SS	Insert	3 3/4"	3 25/Box
TR 15224	Insert	5 1/4"	11 15/Box
TR 15026	Insert	7 1/2"	8 25/Box

RUBBER VULCANIZING REPAIRS



(A) "BOWTIE" AND "SAWTOOTH" STYLE INSERTS - All bowtie and sawtooth style inserts, designed to "fill the injury" will vulcanize chemically or in a heat curing system. The most popular of these inserts is the TR-12331 5-ply insert. For easy installation of these vulcanizing inserts, use any side load insert needle.

Part # and Description	Size	Size (mm)	Box Qty.
TR 15310 "Sawtooth" Plug Kit, contains: 1 - TR-12311, 1 - TR-14008, 1 - TR-14211 and 1 - TR-212			
TR 15311 3-ply Sawtooth ... 2 3/8"x1/4"	60x6		50/Box
TR 15312 3-ply Sawtooth ... 2 3/8"x1/2" ...	60x13		25/Box
TR 15032 5-ply Orange Bowtie 2 1/4"x3/8" ...	57x10		50/Box
TR 15032B 3-ply Black Bowtie . 3 1/8"x5/8"	70x16		25/Box



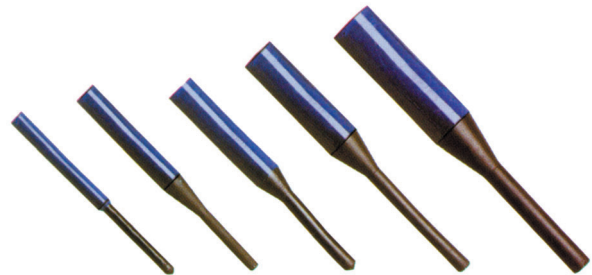
(C) LEAD-WIRE INSERTS - These inserts are designed to "fill the injury" in passenger and truck, radial or bias-ply tires. Coated with a premium blue vulcanizing gum, these inserts will vulcanize chemically or in a heat curing system, becoming a permanent part of the tire. No special insert tools are required for installation. Install from the inside - out, pull through, and cut off wire.

Part # and Description	Size	Size (mm)	Box Qty.
TR 15055	1/4"	6	20/Box
TR 15056	3/8"	10	20/Box
TR 15057	7/16"	11	20/Box



(B) SEAL WEDGE INSERTS - The Wedge is designed to fill any injury (small, medium, large) up to 1/4" (6mm) and will vulcanize chemically or in a heat curing system, becoming a permanent part of the tire. The Wedge is made using two highly elastic black plies of rubber between three layers of our premium blue vulcanizing gum. Due to its highly elastic black plies, the Wedge is able to elongate up to five times its original length, allowing easy insertion through steel belted radial tires. Use any end slot needle for installation.

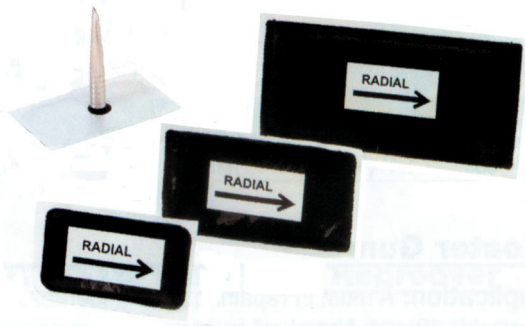
Part # and Description	Size	Size (mm)	Box Qty.
TR 15058 Seal Wedge	2 1/4"x3/8"	57x10	50/Box
TR 15058K Seal Wedge Kit, contains: 1 - TR-12333, 1 - TR-14008, and 1 - TR-14204			



(D) PULL-THRU INSERTS - These inserts are designed to "fill the injury" in passenger and truck, radial or bias-ply tires. Coated with a premium blue vulcanizing gum, these inserts will vulcanize chemically or in a heat curing system. Use the wire installation tool for easy insertion through the injury.

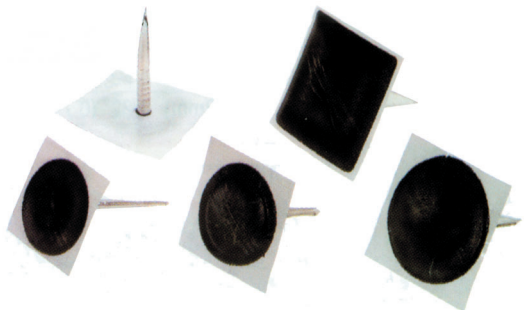
Part # and Description	Size	Size (mm)	Box Qty.
TR 15632	1/4"	6	20/Box
TR 15633	3/8"	10	20/Box
TR 15634	1/2"	13	5/Box
TR 15635	5/8"	16	5/Box
TR 15636	7/8"	22	5/Box
TR 15637	1"	25	5/Box
TR 15638	1 1/4"	32	5/Box
TR 14200	Wire Installation Tool		

STRING-TYPE & COMBINATION REPAIRS



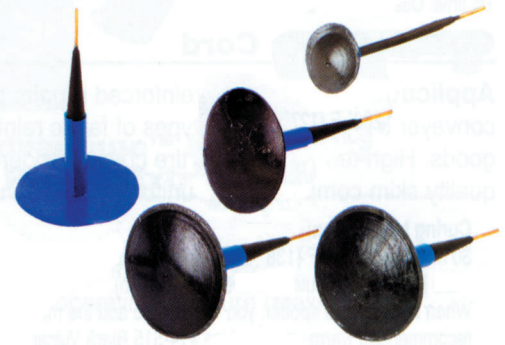
(A) RADIAL QUILLED COMBINATION UNITS - This series is designed to be used in the tread area only of radial tires when cord reinforcing is required for greater strength. The repair unit is black with black vulcanizing gum, and both the stem and repair unit will vulcanize chemically effecting a perfect repair. The stem is equipped with a metal quill for easy installation. (For chemical vulcanization only.)

Part # and Description	Stem Size	Size (mm)	Box Qty.
TR 37535	1 3/4"x3" (45x76mm)	5/16" 8	15/Box
TR 37536	2 1/4"x4" (57x102mm)	3/8" 10	10/Box
TR 37537	2 5/8"x5" (67x140mm)	7/16" 11	5/Box



(B) UNIVERSAL QUILLED COMBINATION UNITS - This series has rubber reinforced patch heads. They are multidirectional and can be applied in any repairable area of radial or bias-ply tires (tread, shoulder, sidewall). The repair unit is black with black vulcanizing gum and both the stem and the repair unit will vulcanize chemically effecting a perfect repair. It takes only four sizes to repair any and all types of repairable injuries (up to 1/4") approved by the RMA, TIA, all major tire manufacturers, and all responsible manufacturers of tire repair. The stem is equipped with a metal quill for easy installation. (For chemical vulcanization only.)

Part # and Description	Size	Size (mm)	Box Qty.
TR 15029	1 3/4" (42mm) Rd	5/16" 5	20/Box
TR 13383	1 7/8" (48mm) Rd	1/4" 6	20/Box
TR 15030	2 1/4" (57mm) Rd	5/16" 8	15/Box
TR 37534	1 1/2" (38mm) Sq.	3/16" 5	20/Box
TR 37535	2 1/4" (57mm) Sq.	5/16" 8	15/Box
TR 15031	2 1/4" (57mm) Sq.	7/16" FLAT	10/Box



(C) LEAD-WIRE COMBINATION UNITS - No special wire pulling tools are required for installation. Just insert the lead wire into the injury from the inside of the tire and pull the repair unit through from the outside. Both the stem and the repair unit are gum coated to provide the most complete bond, both through the injury and on the inner liner. The units are black with gray vulcanizing gum and will vulcanize chemically or in a heat curing system.

Part # and Description	Size	Size (mm)	Box Qty.
TR 15049	1" (25mm)	1/8" 3	20/Box
TR 15050S	1 3/4" (45mm)	1/4" 6	24/Box
TR 15050	2" (50mm)	5/16" 8	24/Box
TR 15051	2" (50mm)	3/8" 10	24/Box



(D) STRING-TYPE INSERTS - These inserts can be used in passenger or truck, radial or bias-ply tires. Made of a butyl rubber, these inserts are very strong, allowing easy insertion through steel belted radials. String-type inserts are temporary repairs, sealing by compression only. (Passenger length for 4" inserts; truck length for 8" inserts.)

Part # and Description	Size	Size (mm)	Box Qty.
Brown "String-Type" Inserts			
TR 37360JPN	Med, Fat	4" 102	50/Box
TR 37360	Fat	4" 102	30/Box
TR 37360/60	Fat	4" 102	60/Box
TR 37499	Fat	4" 102	50/Box
TR 37499L	Fat	8" 204	25/Box

Black "String-Type" Inserts			
TR 37498	Thin	7 1/4" 184	50/Box
TR 37498L	Thin	12" 305	50/Box
TR 37394	Med, Fat	4" 102	50/Box
TR 37395	Med, Fat	8" 204	25/Box
TR 37395/50	Med, Fat	8" 204	50/Box
TR 37390	Fat	4" 102	30/Box
TR 37390/60	Fat	4" 102	60/Box
TR 37391	Fat	4" 102	50/Box
TR 37392	Fat	8" 204	25/Box



TIRE REPAIR LIMITATIONS

PUNCTURE REPAIR

An injury in the tread (crown) area only caused by a small, sharp object penetrating the innerliner of the tire. The injury can be a maximum of 1/4" (6mm) in passenger tires & 3/8" (10mm) in light and medium truck tires. (See page 57 for puncture repair procedures.)

SPOT REPAIR

A rubber only repair that penetrates less than 25% of the body plies. An area to be spot repaired must not exhibit any cord damage except in the case of Bias-Ply tires, which may have up to 25% of the cord plies injured.

REINFORCEMENT REPAIR

An injury which penetrates between 25% and up to 75% of the body plies. A cord reinforced repair unit is required on the innerliner of the tire.

SECTION REPAIR

An injury that penetrates 75% or more of the body plies and exceeds the puncture repair limits. (See page 58 for section repair procedures.)

Section Repair Limits for Radial Tires

Tire Size	Crown Limits	Sidewall Limits
Passenger:		
P195R and smaller	1/2" (13mm)	3/8" (9mm) x 2" (50mm) or 3/4" (19mm) x 1 1/2" (38mm)
P205R and larger	3/4" (19mm)	3/8" (9mm) x 2 3/4" (70mm) or 3/4" (19mm) x 2" (50mm)
Light Truck:		
	1" (25mm)	3/8" (9mm) x 3 1/8" (80mm) or 1" (25mm) x 2" (50mm)
Truck:		
8.25R - 14.00R	1 1/2" (38mm)	3/4" (19mm) x 5 1/8" (130mm) or 1 1/4" (32mm) x 4" (102mm) or 1 1/2" (38mm) x 3 1/8" (80mm)

* Wider repairs must be shorter in length

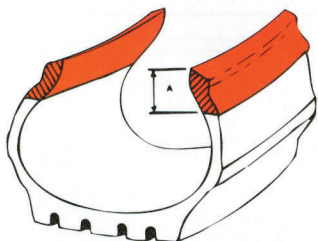
Section Repair Limits for Bias-Ply Tires

Highway Service Drive or Trailer Applications		
Ply Rating	Crown	Sidewall
Up to 8	1" (25mm)	1" (25mm)
10-14	2" (51mm)	1" (25mm)
16-20	2 1/2" (64mm)	1 1/4" (32mm)
Local Service Trailer or P&D Applications		
Ply Rating	Crown	Sidewall
Up to 8	2" (51mm)	1 1/2" (38mm)
10-14	3" (76mm)	1 1/2" (38mm)
16-20	3 1/2" (89mm)	1 3/4" (45mm)

Non-Repairable Areas

RADIAL TIRE NON-REPAIRABLE AREA

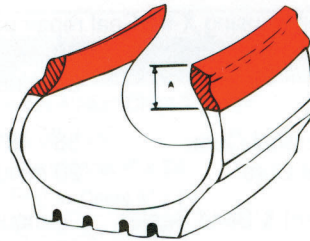
(Measure from toe of bead down innerliner)



Passenger		2 1/2" (63mm)
Light Truck		2 1/4" (57mm)
Truck	7.50	3 1/2" (89mm)
	8.50	3 1/4" (83mm)
	9.00 - 12.00	4" (102mm)

BIAS PLY TIRE NON-REPAIRABLE AREA

(Measure from toe of bead down innerliner)

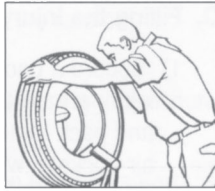


Tire Size	7.00 - 8.75	3 1/4" (80mm)
	9.00 - 14.00	4" (100mm)
	16.00 - 18.00	5" (125mm)
	21.00 - 29.50	6" (150mm)

PUNCTURE REPAIR PROCEDURES

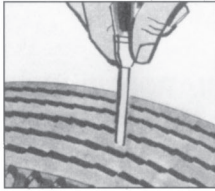
1. Inspection

Before repairing, determine if the injury is within repairable limits (see pg. 56 for description of repairable limits.) Mark the injury, then remove puncturing object from the tire. Before deflating, apply soap solution to the tire to determine if air loss is from one or more puncture(s). Unseat the beads and apply approved bead lubricant. Remove the tire from the wheel carefully to avoid further damage, especially to the beads, and place the tire on a spreader.



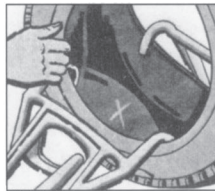
2. Probing

Probe the puncture with a blunt, smooth surface awl or other probing tool to determine the size and direction of the injury, making sure no foreign material is left in the injury.



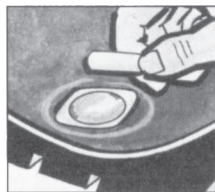
3. Internal Examination

Spread the beads, marking the puncture with a tire crayon. Inspect for evidence of other damage. (eg. damage to the bead area, run flat, etc.) If after a thorough internal examination the tire is determined to be repairable and injury is within repairable limits, proceed to the next step.



4. Select Proper Repair Materials

Center the repair unit over the injury and outline with crayon an area slightly larger than the repair. Repair materials must be selected which are recommended for the construction type (radial, belted bias, bias) of the tire to be repaired.



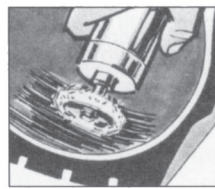
5. Cleaning

Clean the area inside the outlined area thoroughly with a pre-buff chemical cleaner (**Do NOT use gasoline!**) This removes dirt, mold lubricants, etc., and also keeps buffing tools clean. Chemical cleaning is not to be substituted for mechanical buffing. Make certain that no loose or frayed wire ends protrude through the inner liner.



6. Buffing

Buff the cleaned area thoroughly to a flat, smooth velvet surface (RMA #1 buffed texture for chemical vulcanizing repairs, or RMA #3 buffed texture for uncured repairs), taking care not to gouge the inner liner or expose casing fabric. Remove buffing dust from the inner liner with a vacuum cleaner.



7. Puncture Preparation

Ream the puncture channel with a fine reamer from the inside in a clockwise direction to prepare the injury. All exposed cables must be removed to prevent further damage to the tire or the repair.

8. After completing basic preparation, finish repair by selecting one of the following repair methods:

CHEMICAL VULCANIZING REPAIRS

a. Fill Injury - Cement the puncture channel and fill the injury from the inside with contour conforming material. Cut or buff material flush with the inner liner. Follow repair material manufacturer's recommendations. It is very important to fill the injury to prevent rusting of steel cables or deterioration of fabric.



b. Cementing - Always use chemical vulcanizing cement recommended by the repair material manufacturer and apply a thin, even coating to the prepared and buffed surface. Cement must be allowed to dry thoroughly!



c. Repair Unit Application - Tire must be in a relaxed position when the repair unit is being installed. (**DO NOT SPREAD THE BEADS EXCESSIVELY**). Remove backing from suitable repair unit and center over the injury. Stitch repair down thoroughly with stitching tool, working from the center out.



COMBINATION REPAIR UNITS

a. Cementing - Always use the cement recommended by the repair material manufacturer. Apply a thin, even coating to the prepared, buffed surface and inside the injury channel. **Cement must be allowed to dry thoroughly!**



b. Repair Unit Insertion - Remove the backing from the stem and repair head. Pull through according to manufacturer's recommendations.



c. Stitching - Stitch repair head down firmly with stitching tool, working from the center out.



9. Finish Repair

Regardless of type of repair used, the finished repair should fill the injury and seal the inner liner. After inflating, check finished repair, both beads, and the valve stem with soap and water solution to ensure a complete seal.