



# Titan power The best just got better

---

Impedance, OAE,  
ABRIS and the  
revolutionary Wideband  
Tympanometry in one  
powerful device.



**Interacoustics**

---

# Let your equipment and needs interact

---

**The Titan from Interacoustics is a modular platform that lets you combine the tools you need with handheld freedom and full flexibility - from one trusted supplier.**

---

## **One size fits all**

- Diagnostic
- Advanced Clinical

Customize your Titan for diagnostic or advanced clinical testing. Match the modules with your current needs - and upgrade when your challenges change. The Titan delivers Impedance, ABRIS, OAE and the revolutionary Wideband Tympanometry.

---

## **Built for the future**

Every Titan software module is developed based on proven technologies and feedback from users and audiology experts. Features are developed in sync with your changing needs and contain the latest technologies making the Titan a future-safe investment.



---

## **A preview of the benefits**

The Titan is truly a mighty platform with ease of use, professionalism and convenience in one device. Look forward to:

- Superior, professional aesthetics
- Lightweight
- High resolution color display
- Patient-centered testing through multiple probe and transducer configurations
- Handheld and PC mode for full flexibility
- Easy to use with even a minimum of technical understanding
- Supreme usability through storage of calibration values in probe and ID-transducers



**Impedance, OAE,  
ABRIS & Wideband  
Tympanometry in  
one powerful device**

**The first and  
only one of its  
kind 4 superior  
modules in 1  
device**



# Set your winning combination on one mighty platform

Customize your Titan through dedicated software modules to create a winning combination for screening, diagnostic and advanced clinical testing.

## **IMP440**

Diagnostic and clinical impedance

## **ABRIS440**

Automated ABR for infant screening

## **DPOAE440**

Clinical OAE

## **TEOAE440**

Clinical OAE



**Probe lights**  
Multi colored  
LEDs display test  
status for  
ease of use.

### **Easy handling**

From standard diagnostic to advanced clinical testing, the Titan is created with superior usability in mind. From pre-set protocols to customized settings, you will benefit from intuitive interfaces and a professional design.



Pre loaded or  
customized?  
Use existing or  
create your own  
protocols and  
print templates

# IMP440 for every thinkable task

## Your multi-tasking business partner

The IMP440 is available in a diagnostic or clinical version. It features standard tympanometry, ipsilateral and contralateral acoustic reflexes, reflex decay and reflex latency, as well as three Eustachian tube function tests.

## The fastest, most reproducible tympanometry available

IMP440 delivers tympanometry through advanced technologies. These include: "Endless airflow" pressure control technology, high resolution recordings and an intelligent pump system with an adaptive speed control around the tympanic peak. The IMP440 module will help streamline and improve your daily workflow - in record speed.

## IMP440 comes with...

### Three Eustachian tube function tests

Intact, perforated and patulous

### Ipsi and contra acoustic reflexes

Quick screenings at a single intensity or fast threshold searches

### Reflex decay

Ipsilateral as well as contralateral stimulation

### Reflex latency

Detailed investigation at the onset of the reflex

### Optional high frequency probe tones

(678, 800 and 1000Hz)

### Shoulder unit and probe indicator LED

For ease of use and visual feedback of status

## Print wizard

The embedded print wizard in the Titan suite can merge data from all four modules and other Interacoustic Suites for full patient reporting.



# ABRIS440 Automated ABR in seconds

## Automated ABR

The ABRIS440 module for Titan is fast and easy automated ABR testing for infants. The screening module uses the ground breaking CE-Chirp® stimulus reducing test time by up to 50% compared to traditional click stimuli. With an easy to understand display (PC or handheld device), HiTrack compatibility and user customizable protocols, the ABRIS440 combines fast, quality testing with unrivaled usability.

## Simply press "START"

Following patient preparation, simply press start and await a pass/refer result. Minimal testing is required and the ABRIS440 default CE-Chirp® protocol provides a reliable automated ABR test with a sensitivity of 99.9% and a specificity of more than 96%. Choose from four transducers that are automatically detected when connected to the preamplifier.

## CE-Chirp®

Stimulus compensates for the cochlear travel time. The result is a response amplitude up to twice the size compared to a standard click.



# DPOAE440 TEOAE440

## Unparalleled speed and efficiency

**State of the art diagnostic OAE device including automatic protocols and combined printing.**

### **With you through any challenge**

The DPOAE and TEOAE modules ensure exact intensity stimulation throughout the test and monitors the ongoing noise resulting in the most accurate results achievable. Combined with Bayesian weighted averaging that counteracts excess patient noise, the software is extremely efficient especially for infant testing.

The DPOAE and TEOAE modules provide unsurpassed flexibility and a comprehensive frequency range for a full diagnostic evaluation. Customizable protocols offer an unlimited number of tests utilizing a multitude of parameters including stimuli, intensity, stop criteria and much more.

Both modules are capable of performing pressurized OAE measurements, which is especially useful when testing infants & younger children with middle ear conditions. The technique reduces the effects of negative middle ear pressure and more children can potentially be diagnosed earlier.

### **Clinical highlights**

#### **DPOAE440 & TEOAE440**

- DP range 500Hz-10kHz
- TE range 500Hz-5.5kHz (30-90 dB SPL)
- Fully customizable protocols
- Basic & Advanced view
- Manually controlled test time
- Unlimited test points
- Advanced AGC
- Bayesian weighted averaging
- Noah & Hitrack compatibility
- DP Input/Output test
- 226Hz tympanometry
- Operate from Titan or PC
- Pressurized OAE

**Below:  
DPOAE440  
DP-Gram  
with a PASS  
in bar view**







**Flexible freedom**

The flexible design ensures that any screening program or advanced audiology department can adapt protocols to meet their exact test requirements. As a hybrid, the Titan can be operated either handheld or from your PC.

# Introducing the revolution: Wideband Tympanometry

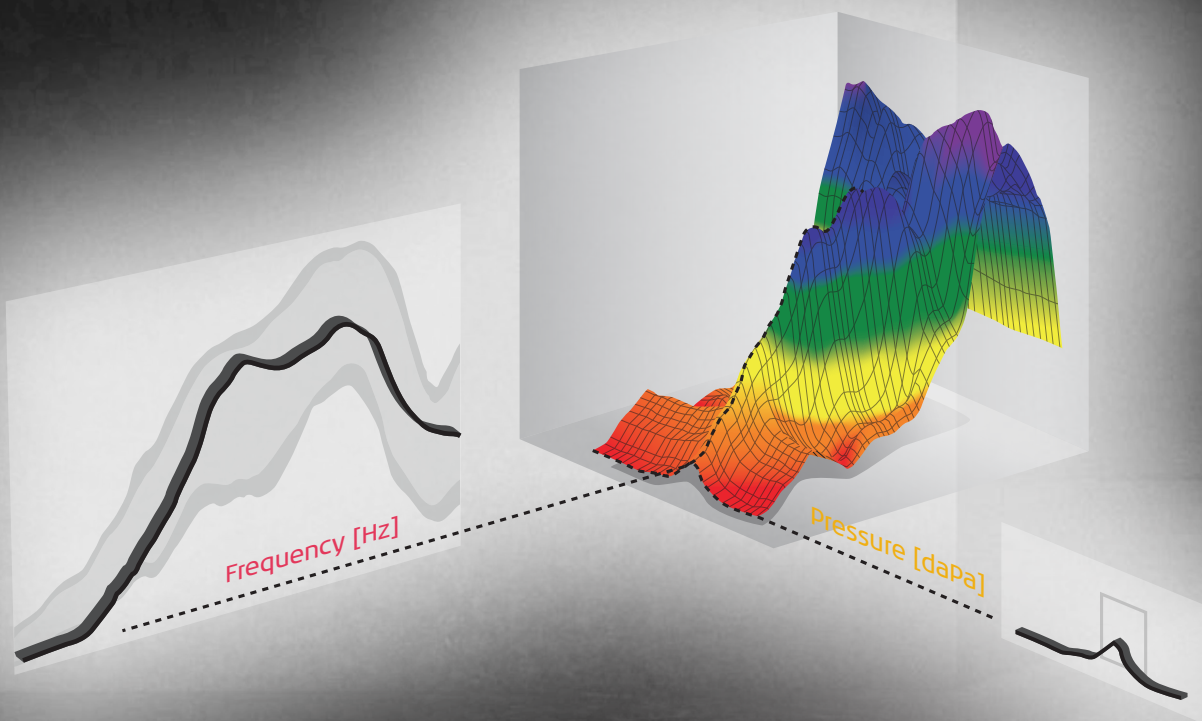
A new dimension in  
differential diagnostics

---

Wideband Tympanometry  
- WBT - Expands our understanding of the middle ear.

WBT provides a 3-dimensional diagnostic insight of middle ear pathology.

---



---

### **One shot: Multiple tympanograms**

Differentiate pathologies with the aid of a powerful 3D image of tympanometric data across a full range of frequency and pressure. The power of a click alternative to measure at peak pressure.

---

### **The power of a click**

The Click stimulus unlocks the power of Multi-Frequency Tympanometry in the same time as testing a single frequency.

The 3D result reveals information of middle ear performance at any frequency across a full range of pressure change.

---

### **Combine with OAE and automated ABR**

WBT provides missing data about middle ear conductive issues that will enhance a diagnosis based either on OAE or ABR alone.

---

### **3D graphs**

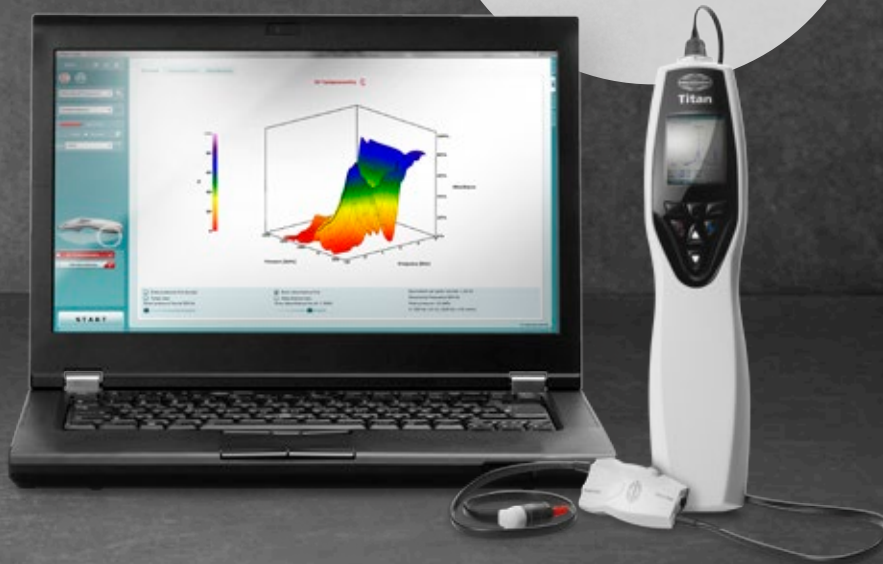
Absorbance is revealed in a multi-dimensional 3D graph that enables the clinician to have an immediate understanding of middle ear performance across frequency and pressure. Diagnostic interpretation is made easy with a clear map of middle ear function.

---

### **No extra skills required**

WBT is easy and yet comprehensive. Differential diagnostics are made much more intuitive with the aid of overlaid normative data. Compare to illustrated examples of elusive pathology.

**A clear benefit**  
WBT streamlines middle ear diagnostics and provides accurate and specific measures across a comprehensive frequency range.





## Interacoustics

Interacoustics is a world leading provider of diagnostic solutions in the field of hearing and balance assessment. Since 1967 we have designed and manufactured our innovative diagnostic solutions for the world of audiology with a constant focus on providing our customers with quality, dependable products.

---

## With you at all times

We operate in over 100 countries worldwide through a carefully selected network of distributors and service centres. Purchasing an Interacoustics product guarantees not only a quality product, but also direct access to our highly professional training and support service.

---

## Product specifications

All technical and hardware specifications concerning true hybrid products can be downloaded from our website.

Read more at  
[interacoustics-us.com](http://interacoustics-us.com)

---

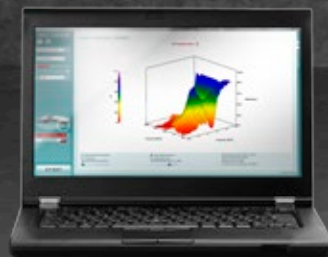
### Interacoustics USA

10393 West 70th Street  
Eden Prairie, MN 55344

T +1 800 947 6334

F +1 952 903 4200

[info@interacoustics-us.com](mailto:info@interacoustics-us.com)  
[interacoustics-us.com](http://interacoustics-us.com)



Go online to  
explore our  
full product  
range



# Interacoustics