

TM 9-1005-211-35

cy 2

TM 9-1005-211-35

DEPARTMENT OF THE ARMY TECHNICAL MANUAL

Ch 1, 2, 3, 4,

DIRECT SUPPORT, GENERAL SUPPORT,
AND DEPOT MAINTENANCE MANUAL
INCLUDING REPAIR PARTS AND
SPECIAL TOOL LISTS

PISTOL, CALIBER .45, AUTOMATIC: M1911A1,
WITH HOLSTER, HIP, W / E
(1005-673-7965)

PISTOL, CALIBER .45, AUTOMATIC: M1911A1,
WITH HOLSTER, SHOULDER, W / E
(1005-561-2003)

RETURN TO ARMY LIBRARY
ROOM 1 A 518 PENTAGON

HEADQUARTERS, DEPARTMENT OF THE ARMY
APRIL 1968

SAFETY PRECAUTIONS

WARNING	REFERENCE
Before starting an inspection, be sure to clear the weapon. DO NOT actuate the trigger until the weapon has been cleared. Inspect the chamber, to insure that it is empty, and check to see that no ammunition is in position to be introduced (magazine). Avoid having live ammunition in the vicinity of work area.	Par 2-6

TECHNICAL MANUAL }
 No. 9-1005-211-35 }

HEADQUARTERS,
 DEPARTMENT OF THE ARMY
 WASHINGTON, D.C., 4 April 1968

PISTOL, CALIBER .45, AUTOMATIC M1911A1

This manual is current as of 6 February 1968

		Paragraphs	Pages
CHAPTER 1.	INTRODUCTION		
Section I.	General -----	1-1, 1-2	1-1
II.	Description and data -----	1-3	1-1
CHAPTER 2.	DIRECT SUPPORT, GENERAL SUPPORT AND DEPOT MAINTENANCE INSTRUCTIONS		
Section I.	Repair parts, special tools and equipment -----	2-1, 2-2	2-1
II.	Troubleshooting -----	2-3	2-3
III.	Inspection -----	2-4, 2-6	2-4
IV.	Depot maintenance instructions -----	2-7	2-7
CHAPTER 3.	REPAIR INSTRUCTIONS		
Section I.	General maintenance -----	3-1, 3-3	3-1
II.	Maintenance of Caliber .45, Automatic, Pistol, M1911A1 -----	3-4	3-1
III.	Repair standards -----	3-5, 3-6	3-3
CHAPTER 4.	FINAL INSPECTION -----	4-1, 4-6	4-1
APPENDIX A.	REFERENCES -----		A-1
B.	DIRECT SUPPORT, GENERAL SUPPORT AND DEPOT MAINTENANCE REPAIR PARTS AND SPECIAL TOOLS LISTS		
	Repair Parts For:		
	Major Groups and Assemblies -----		B-4
	Slide Group -----		B-4
	Receiver Group -----		B-5

*This manual supersedes TM 9 1005-211-34, 22 June 1964, including C1, 13 April 1967, and TM 9-1005-211-35P, 29 April 1964.

CHAPTER 1

INTRODUCTION

Section I. GENERAL

1-1. Scope

These instructions are in accordance with the MAC and are published for the use of direct support, general support, and depot maintenance personnel maintaining the Caliber .45, Automatic, Pistol M1911A1. They provide information on the maintenance of the equipment which is beyond the scope of the tools, equipment, personnel or supplies normally available to operator's and organizational maintenance.

1-2. Forms and Records

a. *General.* DA Forms and procedures used

for equipment maintenance will be only those prescribed in TM 38-750, Army Equipment Record Procedures.

b. *Recommendations for Equipment Publication Improvements.* Report of errors, omissions, and recommendations for improving this publication by the individual user is encouraged. Reports should be submitted on DA Form 2028 (Recommended Changes to DA Publications) and forwarded direct to the Commanding General, Headquarters, U.S. Army Weapons Command, ATTN: AMSWE-SMM-P, Rock Island Arsenal, Rock Island, Illinois 61201.

Section II. DESCRIPTION AND DATA

1-3. Description and Tabulated Data

Refer to TM 9-1005-211-12.

CHAPTER 2

DIRECT SUPPORT, GENERAL SUPPORT, AND DEPOT MAINTENANCE INSTRUCTIONS

Section I. REPAIR PARTS, SPECIAL TOOLS AND EQUIPMENT

2-1. Repair Parts Special Tools and Equipment

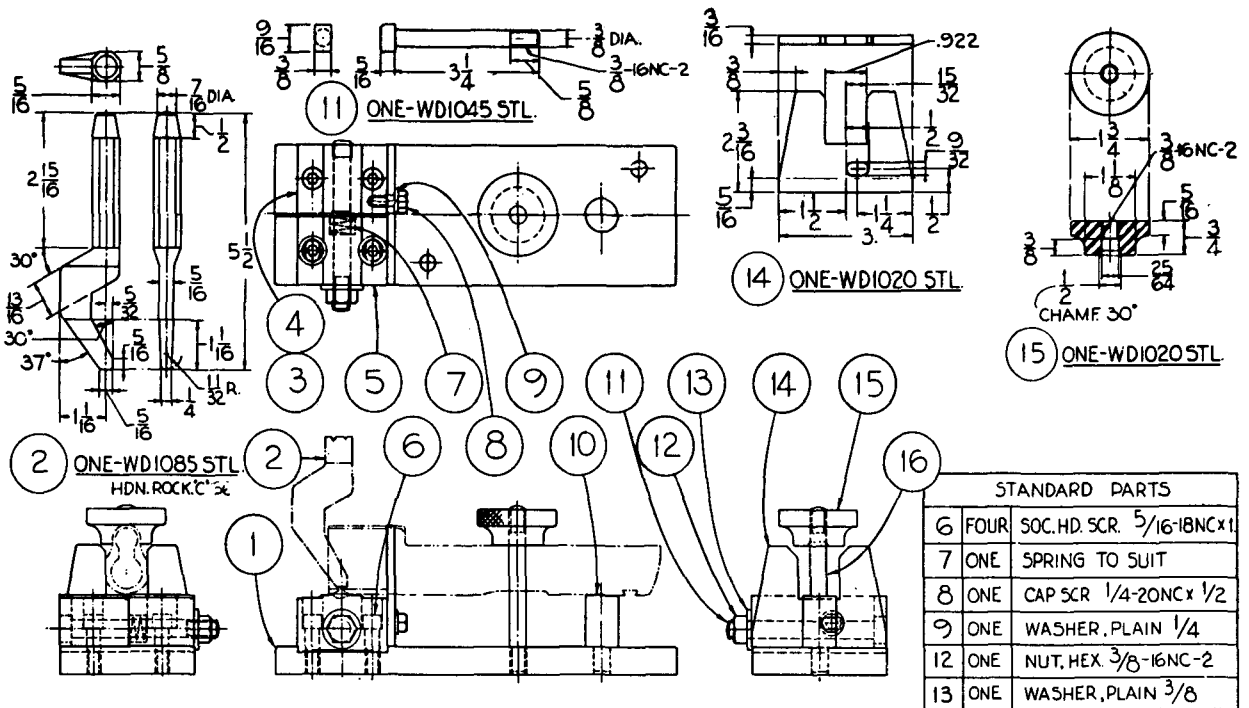
Refer to appendix B.

2-2. Improved Tools

Refer to table 2-1.

Table 2-1. Improved Tools

Item	References		Required for
	Figure	Use	
Fixture, riveting front sight	Fig. 2-1, 2-2	Fig. 3-1	To rivet front sight in place on slide assembly.
Tool, staking bushing	Fig. 2-3	Fig. 3-2	To stake bushing in receiver.
Tool, staking plunger tube	Fig. 2-4	Fig. 3-3	To stake plunger tube in receiver.



SHEET 1 OF 2

WE 17383

Figure 2-1. Improved fixture for riveting front sight. (1 of 2)

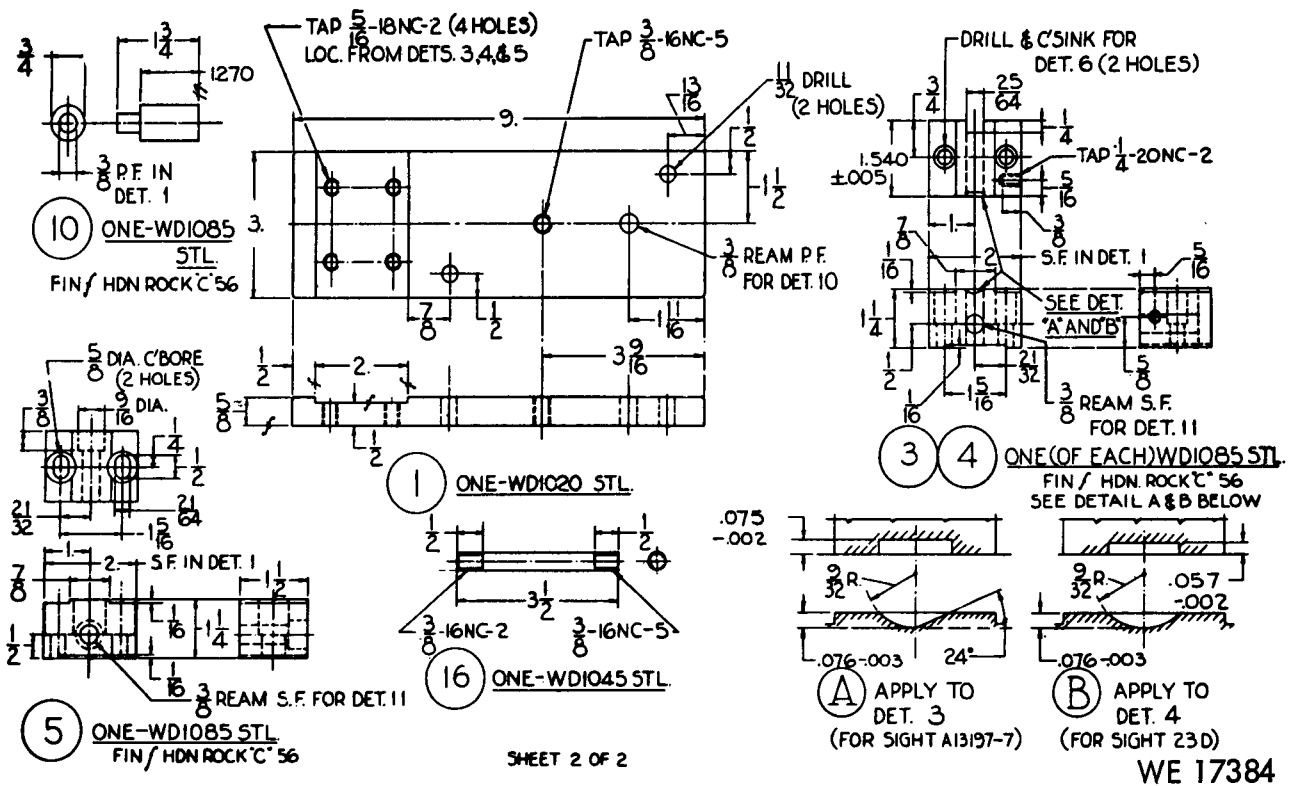


Figure 2-2. Improvised fixture for riveting front sight. (2 of 2)

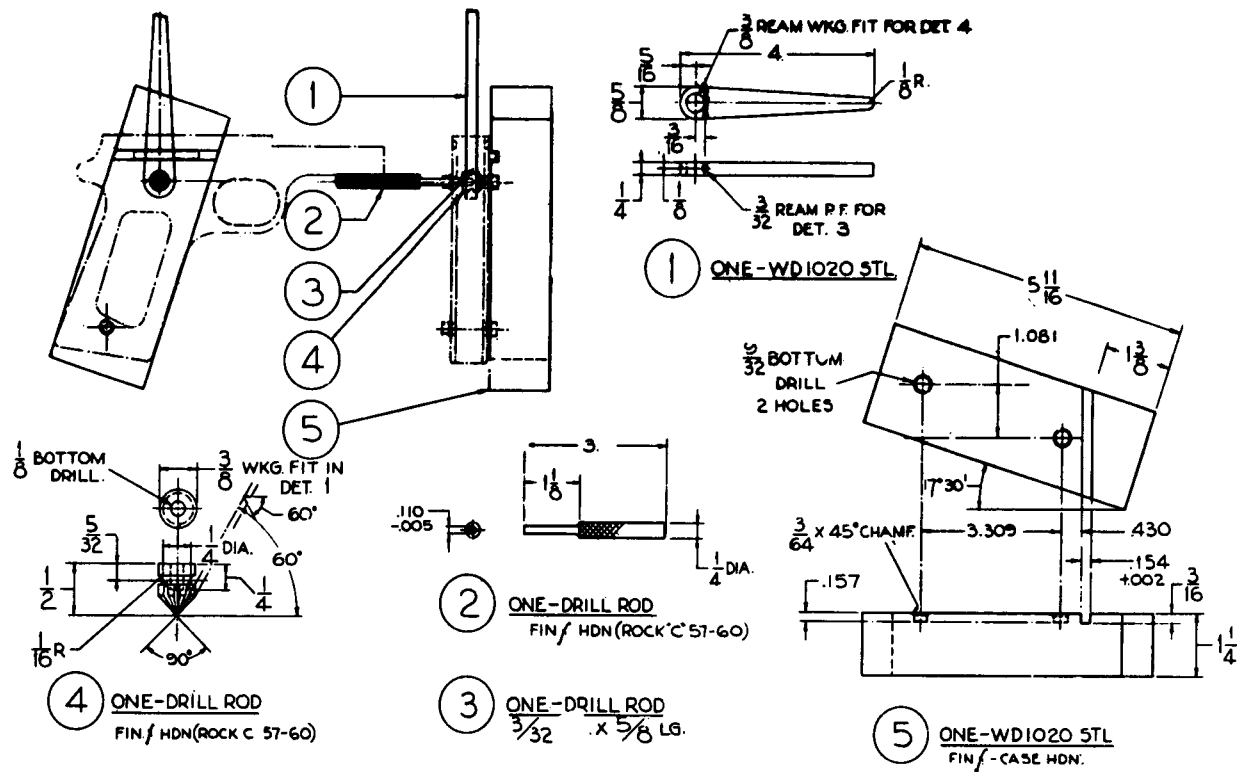


Figure 2-3. Improvised tool for staking bushing.

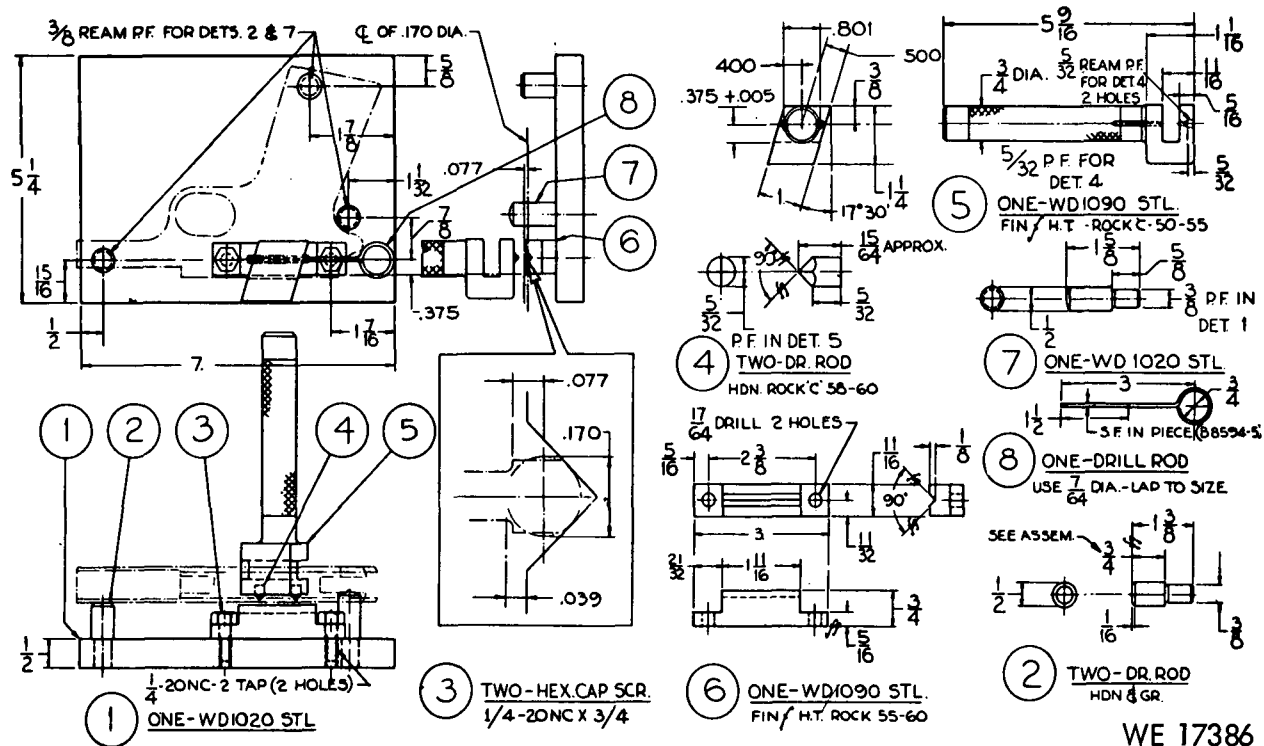


Figure 2-4. Improved tool for staking plunger tube.

Section II. TROUBLESHOOTING

2-3. General

a. Refer to table 2-2.

b. Refer to TM 9-1005-211-12 for operator and organizational troubleshooting procedures.

Table 2-2. Troubleshooting

Malfunction	Probable causes	Corrective action
Failure to feed	Worn or broken magazine catch	Replace, 20, fig. B-3
Failure to chamber	Weak recoil spring	Replace, 2, fig B-2
Failure to lock	Weak recoil spring	Replace, 2, fig B-2
Failure to fire	Weak mainspring	Replace, 10, fig. B-3
Failure to unlock	Broken barrel link lugs	Replace barrel, 5, fig B-2
Failure to extract	Broken or worn extractor	Replace extractor, 11, fig B-2
	Dirty or pitted chamber	Clean chamber; if pitting is excessive, replace barrel, 5 fig B-2
Failure to eject	Faulty extractor	Replace extractor, 11 fig B-2
	Broken ejector	Replace ejector, 25, fig B-3
Failure to cock	Worn cock notch	Replace hammer, 14, fig B-3
	Worn sear	Replace sear, 18, fig B-3
	Worn or broken disconnecter	Replace disconnecter, 19, fig B-3
Two shots, or more fired in succession by one trigger squeeze	Worn cock notch	Replace hammer, 14, fig B-3

Section III. INSPECTION

2-4. General

This section provides specific instructions for guidance during inspection by direct and general support maintenance personnel of materiel in the hands of troops in the field, in direct and general support shops, and in alerted units scheduled for oversea duty. Inspections are made for the purpose of: (1) determine the condition of an item as to serviceability, (2) recognizing conditions that would cause failure, (3) assuring proper application of maintenance policies at prescribed levels, and (4) determine the ability of a unit to accomplish its maintenance and supply missions.

2-5. Categories of Inspection

Refer to AR 750-8.

2-6. Inspection Procedures

Warning. Before starting an inspection, be sure to clear the weapon. **DO NOT** actuate the trigger until the weapon has been cleared. Inspect the chamber, to insure that it is empty, and check to see that no ammunition is in position to be introduced (magazine). Avoid having live ammunition in the vicinity of work area.

a. Refer to table 2-3 and TM 9-1005-211-12.

b. Complete inspection of all parts is not always necessary, good judgment should be exercised pertaining to the degree of inspection of integral parts within assemblies.

Table 2-3. Inspection Procedures

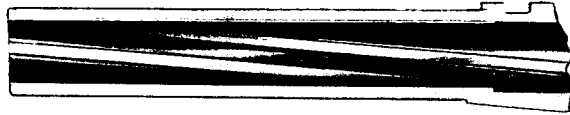
Inspection of materiel in hands of troops		Direct and general support inspections		Preembarkation inspection	Action	Reference
Spot check	Command	Initial	In-process			
x	x	x	-----	x	GENERAL	
x	x	-----	-----	x	Determine serviceability.	
x	x	-----	-----	x	Determine causes of mechanical and functional difficulties that troops may be having.	
x	x	-----	-----	x	Determine if all authorized modifications have been applied, and that no unauthorized alterations have been made. Check the index in DA Pam 310-4 and the current MWO files for any MWO's printed after publication.	
x	x	-----	-----	x	Determine that no work beyond the scope of the unit is being attempted.	
x	x	-----	-----	x	Instruct personnel in proper preventive maintenance procedures, where found inadequate.	
x	x	-----	-----	x	Check on completeness of organizational maintenance allowances and procedures for obtaining replenishments.	
x	x	-----	-----	x	Check legibility of serial number.	
x	x	-----	-----	x	Check general appearance of pistol and holster.	
x	x	-----	-----	x	Check storage conditions of supplies and ammunition.	
x	x	-----	-----	x	Initiate a thorough report on materiel on "deadline" with reason therefore, for further appropriate action.	
x	x	-----	-----	x	Report to responsible officer any carelessness, negligence, unauthorized modifications or tampering. Report to be accompanied by recommendations for correcting unsatisfactory conditions.	

Table 2-3. Inspection Procedures—Continued

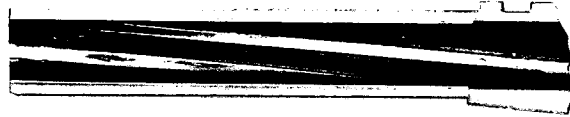
Inspection of materiel in hands of troops		Direct and general support inspections		Preembarkation inspection	Action	Reference
Spot check	Command	Initial	In-process			
x	x	-----	-----	x	SPECIFIC Safety tests and disconnecter test. Trigger Pull: maximum—6.5 pounds minimum—5.0 pounds	TM 9-1005-211-12 Par 3-5
x	x	x	-----	x	Magazine assembly Slide Group	TM 9-1005-211-12
x	x	x	x	x	Inspect the barrel (5, fig B-2) for burs on exterior and interior rim of the muzzle. Inspect for pitting, bulges, and sharpness of lands. Barrel must be straight, as determined visually, clean and free of corrosion. Pits in the chamber are allowable if they are not large enough to cause extraction difficulties. Pits as wide as a land or groove and less than three-eighths are allowable. Barrels containing pits, as indicated in figure 2-5, will be rejected. Scattered or uniformly fine pits or fine pits in a densely pitted area are allowable. Tool marks or scratches are accepted regardless of length. Tool marks will appear on lines running laterally in the grooves or may run spirally across the top of lands. Definitely ringed bores or bores ringed sufficiently to bulge the outside surface of the barrel are cause for rejection. However, faint rings or shadowy depressions do not indicate an unserviceable barrel and should not be cause for rejection. Barrels will be rejected if worn sufficiently to affect sharpness of the lands. However, pits cutting into lands are acceptable if within the limitations described above. Lands that appear dark due to coating or gilding metal from projectiles should not be cause for rejection.	Fig 2-5
x	x	x	x	x	Inspect the barrel bearing for burs and excessive wear.	4, fig B-2
x	x	x	x	x	Inspect slide for breaks or cracks, especially around the ejector port. Inspect the interior grooves and ejector port of slide for excessive wear or burs. Check for loose front or rear sights.	12, fig B-2
x	x	x	x	x	Inspect the firing pin for wear or shortness. The pin, as manufactured, has an overall length of 2.290 to 2.296 inches.	9, fig B-2
x	x	x	x	x	Inspect the recoil and firing pin springs for damage or deformity. The recoil spring must be 6-1/2 inches free length.	3 and 10, fig B-2
x	x	x	x	x	Inspect the extractor for wear, weakness, broken lip or deformation.	11, fig B-2
x	x	x	x	x	Inspect the recoil spring plug, recoil spring guide, firing pin stop, barrel link and pin for burs or distortions.	Fig B-2

Table 2-3. Inspection Procedures—Continued

Inspection of materiel in hands of troops		Direct and general support inspections		Preembarkation inspection	Action	Reference
Spot check	Command	Initial	In-process			
					Receiver Group	
x	x	x	x	x	Inspect the trigger for burs and wear. Check the half-cock position notch and full-cock notch of hammer for cracks, wear or chips. Make certain the hammer strut is not bent or cracked.	13, 14, 16, fig B-3
x	x	x	x	x	Inspect the sear for worn or chipped tips or worn lugs.	18, fig B-3
x	x	x	x	x	Inspect the sear spring for broken leaves, cracks and tension.	12, fig B-3
x	x	x	x	x	Inspect disconnecter for burs and wear.	19, fig B-3
x	x	x	x	x	Inspect the grip safety for burs, wear and cracks on the tip which engages the trigger.	3, fig B-3
x	x	x	x	x	Inspect the pin portion and lug of safety for wear or damage.	3, fig B-3
x	x	x	x	x	Inspect the mainspring for damage.	4, fig B-3
x	x	x	x	x	Inspect the mainspring cap pin, detent plunger and straight-headed pin for burs, wear or damage.	8, 11, 9, fig B-3
x	x	x	x	x	Inspect for bent or worn mainspring housing pin and spring pin.	2, 5, fig B-3
x	x	x	x	x	Inspect slide stop, slide stop plunger and safety plunger for burs, wear or damage.	2, fig B-1; 32, 30, fig B-3
x	x	x	x	x	Inspect magazine catch and magazine catch lock for burs and wear. Check magazine spring for damage.	20, 21, fig B-3
x	x	x	x	x	Inspect spring (housing) for burs on mating surfaces, and lanyard loop for being bent, worn or damaged.	10, 6, fig B-3
x	x	x	x	x	Inspect grips for cracks or worn checkering.	27, 28, fig B-3
x	x	x	x	x	Inspect the receiver housing for wear or burs in the slide mating grooves. Inspect the receiver for deformation. Check to see that the plunger tube, ejector, ejector pin, and grip screw bushings are not burred or worn. Check the mainspring housing mating grooves in the receiver for burs. Check slide stop notch for oversize or wear.	34, fig B-3



EXAMPLE 1. INTERIOR OF BARREL SHOWING SLIGHT PITTING AND SHARP LANDS - CUTAWAY VIEW.



EXAMPLE 2. INTERIOR OF BARREL SHOWING PITTING AND DULL LANDS - CUTAWAY VIEW.



EXAMPLE 3. INTERIOR OF BARREL SHOWING PITTING, WORN LANDS AND BURS - CUTAWAY VIEW.

WE 17388

Figure 2-5. Barrel assembly inspection criteria.

Section IV. DEPOT MAINTENANCE INSTRUCTIONS

2-7. General

a. For depot maintenance instructions contact the Commanding General, Headquarters, U.S.Army Weapons Command, ATTN: AMS-

WE-SMM-SA, Rock Island Arsenal, Rock Island, Illinois 61201.

b. Repair parts, special tools and equipment are listed in appendix B of this manual.

CHAPTER 3

REPAIR INSTRUCTIONS

Section I. GENERAL MAINTENANCE

3-1. General

This section provides instructions on general maintenance procedures.

3-2. General Repair Methods

a. *Disassembly and Assembly Procedures.*

(1) In disassembling the pistol, remove the major groups and assemblies (fig B-1) whenever possible. Groups and assemblies may be disassembled, as necessary, into individual parts.

(2) Complete disassembly of a unit is not always necessary in order to make a required replacement or repair. Good judgment should be exercised to keep disassembly and assembly operations to a minimum.

(3) During assembly, assemblies and groups should be assembled first, then installed to form a complete unit. Lubricate parts before

assembly as indicated in TM 9-1005-211-12.

b. *Replacement of Parts.*

(1) Parts will be replaced when unserviceable.

(2) When assembling a unit, replace spring pins, if available. If screws, nuts, washers, and retainers are damaged they will be replaced.

(3) All springs should be replaced if they are broken, deformed, fail to function properly, or fail to meet specific requirements.

(4) If a new part is not available, a reconditioned part may be substituted. Such reconditioned parts should be examined carefully to determine their serviceability.

3-3. Cleaning

Refer to TM 9-1005-211-12 for detailed cleaning procedures.

Section II. MAINTENANCE OF CALIBER .45, AUTOMATIC, PISTOL, M1911A1

3-4. General

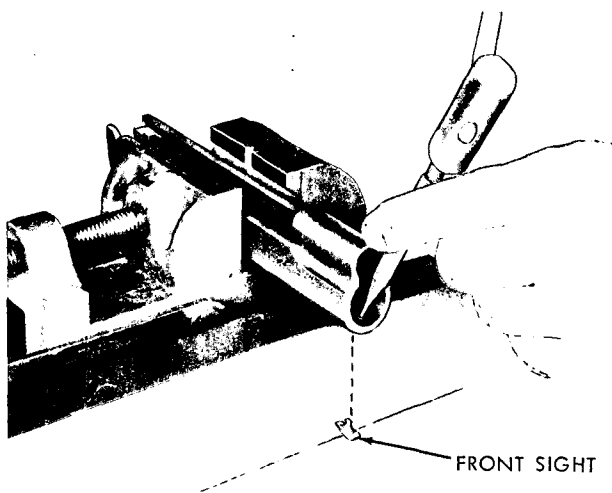
a. For removal of major groups and assemblies refer to TM 9-1005-211-12 and figure B-1.

b. Refer to table 3-1 for specific maintenance instructions.

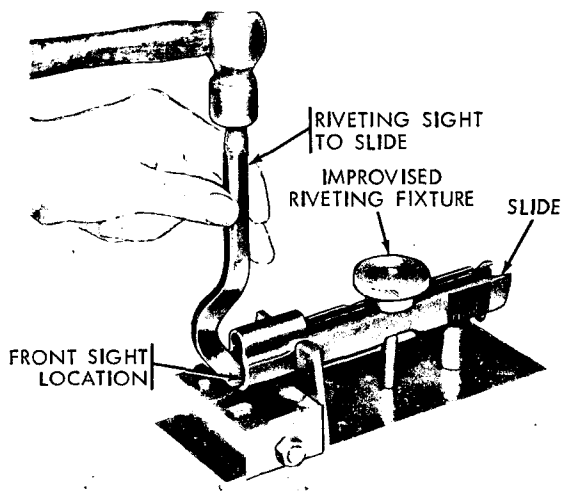
Table 3-1. Guide to Maintenance of Caliber .45 Automatic, Pistol, M1911A1

Groups and assemblies	Disassembly and assembly*	Repair	Tests and adjustments
Caliber .45, Automatic Pistol, M1911A1 Magazine Assembly Slide Stop Slide Group	TM 9-1005-211-12 and appendix B TM 9-1005-211-12 2, fig B-1 Fig B-2	Par 3-2 Replace Replace Par 3-2 Replace items 1 through 14, fig B-2, if needed. Refer to figure 3-1 for replacing item 14.	Trigger pull—par 3-5
Receiver Group	Fig B-3	Par 3-2 Replace items 1 through 33 except 7, figure B-3, if needed. Refer to figure 3-2 for staking item 29 in receiver. Refer to figure 3-3 for staking item 33 on receiver.	

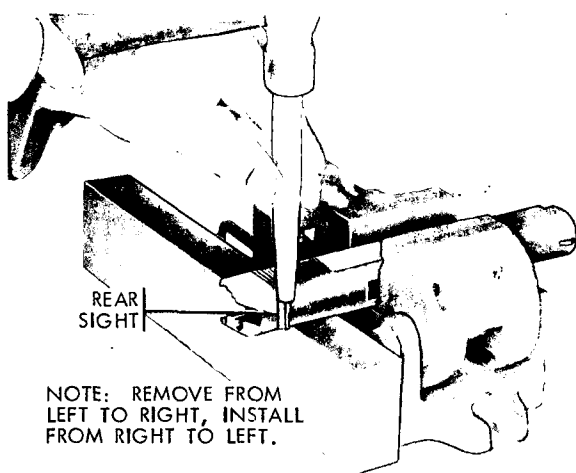
*Disassembled in numerical order/assembled in reverse order. (Reference exploded views in appendix B.)



STEP 1. REMOVE FRONT SIGHT.

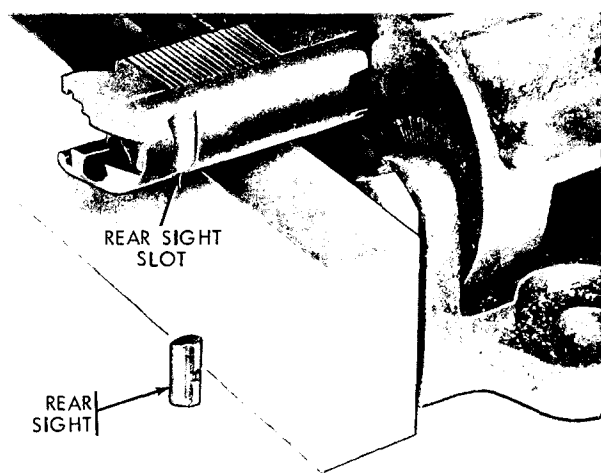


STEP 2. INSTALL FRONT SIGHT.



NOTE: REMOVE FROM LEFT TO RIGHT, INSTALL FROM RIGHT TO LEFT.

STEP 3. REMOVE/INSTALL REAR SIGHT.



STEP 4. REAR SIGHT REMOVED.

WE 17391

Figure 3-1. Removal/installation of front and rear sights and utilizing improvised riveting fixture.

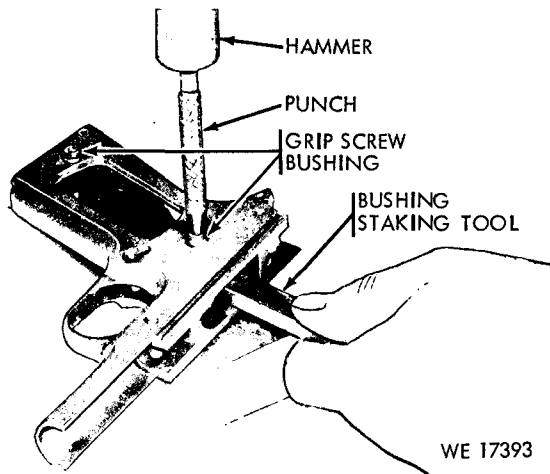


Figure 3-2. Installing and staking grip screw bushings on receiver, utilizing improvised tool for staking grip screw bushings.

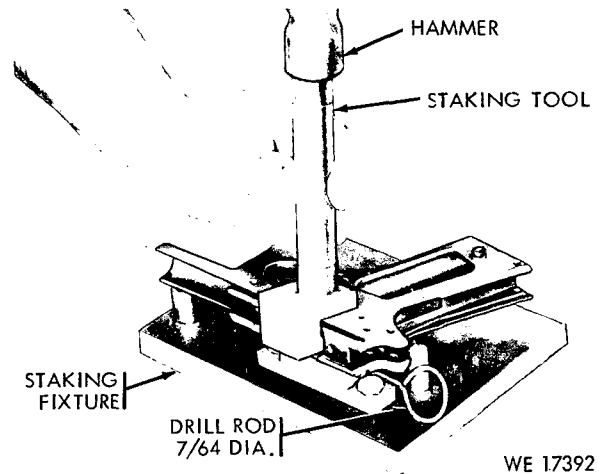


Figure 3-3. Installing and staking of plunger tube on receiver, utilizing improvised tool for staking plunger tube.

Section III. REPAIR STANDARDS

3-5. Trigger Pull Test

After final assembly of the pistol, check the trigger pull using trigger pull measuring fixture 7274758 (fig 3-4) in accordance with instructions indicated below.

Step 1. With the safety unlocked, rest the weight on the floor and hook the notched portion of the rod over the center portion of the trigger.

Note. Make certain the rod does not contact or rub any portion of the pistol and that rod and barrel are parallel. Empty magazine must be installed when checking the trigger pull.

Step 2. Depress grip safety and carefully raise the weight from the floor. When using the 5 pound weight (minimum), the trigger should not release the hammer. When using the 6.5 pound weight (maximum), the trigger should release the hammer.

Caution: A slow and steady lift must be utilized to assure a true and accurate check.

3-6. Correcting Trigger Pull

Caution. While stoning, critical dimensions should not be altered.

a. *Trigger Pull Too Light.* This is evidence of a worn cocking notch on the hammer, worn or damaged sear, or a weak helical compression housing spring. Examine the components for wear or damage. If trigger pull cannot be corrected by stoning, replace with new components, as required.

b. *Trigger Pull Exercise.* This is evidence of burs or surface irregularities on the hammer full-cock notch or sear. A helical compression housing spring that is damaged or too strong and/or interferences or binding between the mating surfaces of the pertinent parts within the receiver group are other probable causes. If the trigger pull cannot be corrected by stoning, replace with new components, as required.

c. *Creep in Trigger.* Creep is defined as a perceptible movement of the trigger after the slack has been taken up and before the hammer is released. It is caused by rough or uneven mating surfaces of the sear, hammer, and disconnecter and also by unserviceable sear and hammer pins. If the creep cannot be corrected by stoning, replace with new components, as required.

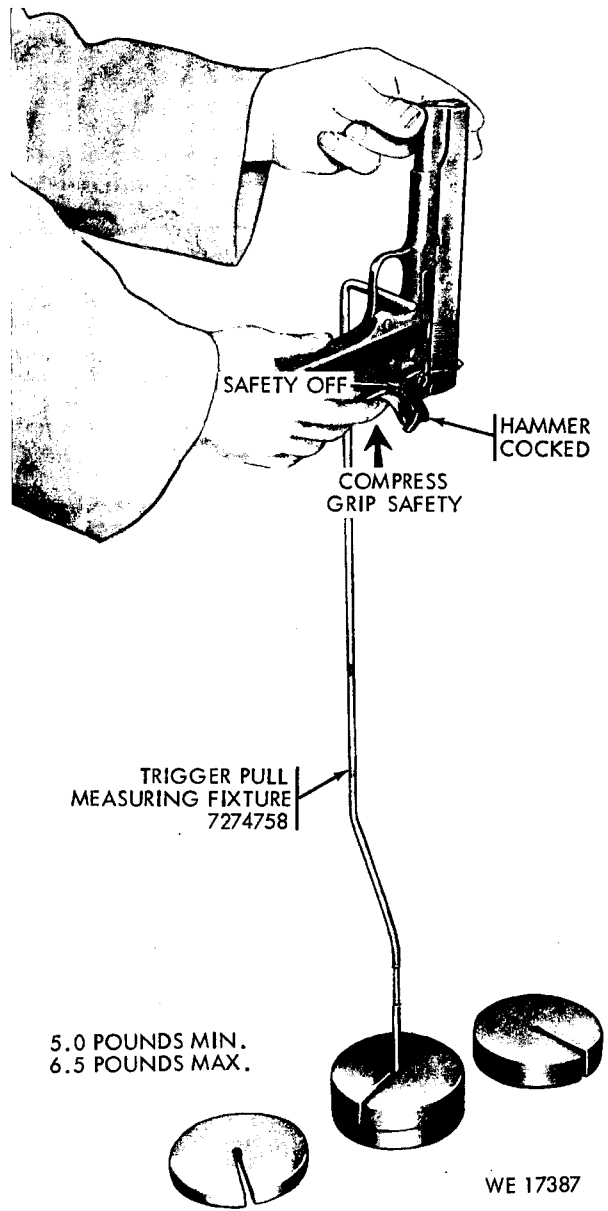


Figure 3-4. Checking trigger pull.

CHAPTER 4

FINAL INSPECTION

4-1. Visual Inspection

For specific visual inspection procedures refer to table 2-3.

4-2. General Functional Inspection

Refer to TM 9-1005-211-12 for procedures in conducting the following inspections.

- a. Check functioning of safety.
- b. Check functioning of grip safety.
- c. Check functioning of hammer and sear.
- d. Check functioning of disconnecter.

4-3. Hand Function Test

The following hand function test is performed by following the four steps listed below:

- Step 1. Place three dummy cartridges in magazine (fig. 4-1, step 1). Insert magazine in receiver group. Release slide stop. This action would cause barrel and slide group to move forward. At the same time, a dummy cartridge

will be stripped from magazine into chamber of the weapon.

- Step 2. Release safety (Fig 4-1, step 2).

- Step 3. Squeeze trigger, allowing hammer to fall (fig. 4-1, step 3). Continue test until third cartridge has been ejected from the pistol, simulating dry firing.

- Step 4. When last cartridge is ejected, slide group should remain locked in open position by slide stop (fig 4-1, step 4).

4-4. Function and Firing Tests

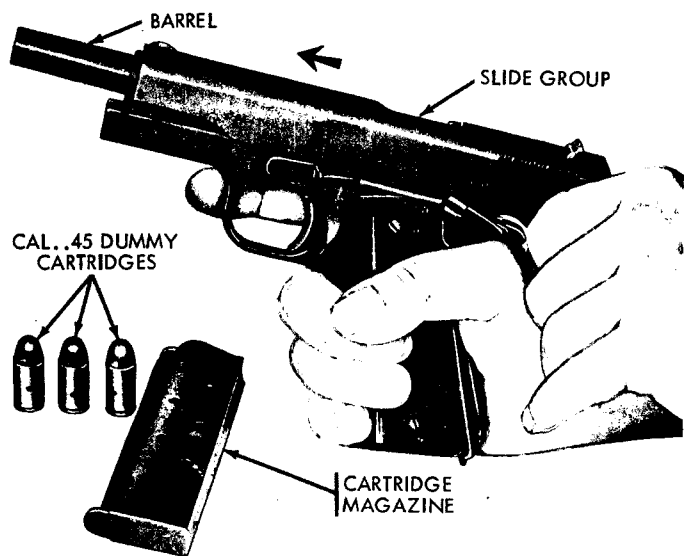
Pistols that have been repaired should be function fired, whenever possible, to assure proper operation.

4-5. Corrective Action

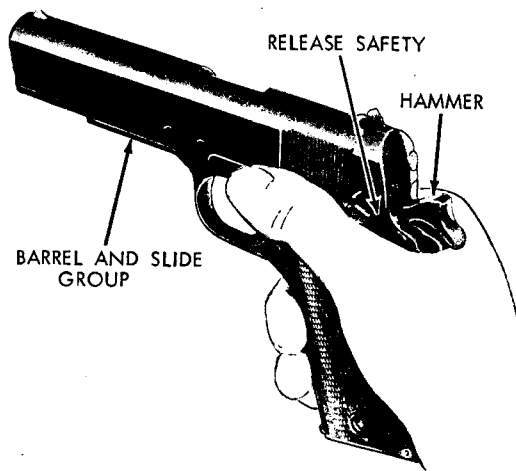
Pistols that fail to meet any of the above functional or firing tests are to be corrected by replacement of defective components.

4-6. Completion of Inspection

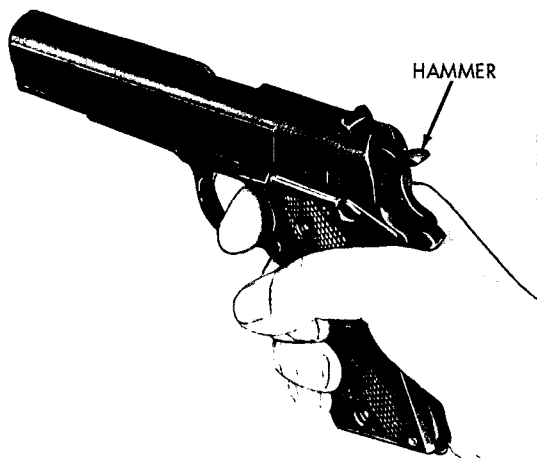
Upon completion of the final inspection, pistols will be cleaned and lubricated.



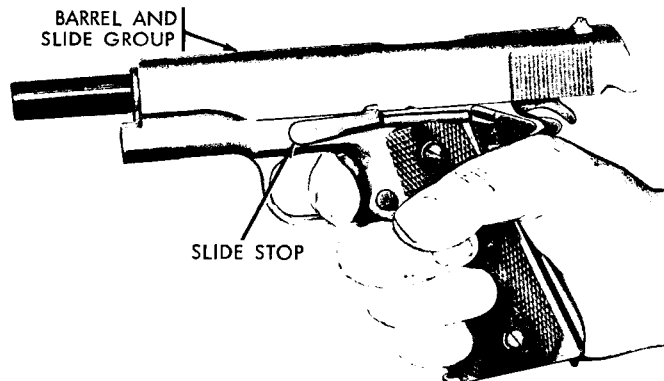
STEP 1. POSITION OF HANDS WHEN LOADING WEAPON - LEFT FRONT VIEW.



STEP 2. HAMMER COCKED - READY TO BEGIN FUNCTION FIRING.



STEP 3. WEAPON IN BATTERY POSITION.



STEP 4. SLIDE GROUP LOCKED IN OPEN POSITION AFTER LAST CARTRIDGE IS FIRED.

WE 17394

Figure 4-1. Hand function test for Caliber .45, Automatic Pistol, M1911A1.

APPENDIX A

REFERENCES

A-1. Publication Indexes

The following indexes should be consulted frequently for the latest changes or revisions of references given in this appendix and for new publications relating to material covered in this manual.

Military Publications:

Index of Administrative Publications	DA Pam 310-1
Index of Army Films, Transparencies, GTA Charts and Recording	DA Pam 108-1
Index of Blank Forms	DA Pam 310-2
Index of Doctrinal Training, and Organizational Publications	DA Pam 310-3
Index of Modification Work Orders	DA Pam 310-7
Index of Supply Catalogs and Supply Manuals (excluding types 7, 8 and 9)	DA Pam 310-6
Index of Technical Manuals, Technical Bulletins, Supply Manuals (types 7, 8 and 9) Supply Bulletins, and Lubrication Orders	DA Pam 310-4

A-2. Supply Catalogs

Sets, Kits, and Outfits Components List, Tool Set, Direct and General Support Maintenance, Basic Small Arms	SC 4933-95-CL-E04
---	-------------------

A-3. Forms

The following form pertains to this materiel.
DA Form 2028, Recommended Changes to DA Publications.

A-4. Other Publications

The following explanatory publications pertain to this material.

a. General.

Operator and Organizational Maintenance Manual including Repair Parts and Special Tool Lists for Caliber .45 Automatic Pistol M1911A1 with Hip Holster and Caliber .45 Automatic Pistol M1911A1 with Shoulder Holster	TM 9-1005-211-12
Pistols and Revolvers	FM 23-35
Army Equipment Record Procedures	TM 38-750

b. Cleaning.

Cleaning of Ordnance Materiel	TM 9-208-1
-------------------------------------	------------

<i>c. Inspections.</i>	
Command Maintenance Management Inspection	AR 750-8
Small Arms Weapons: Standards for Visual	
Inspections of Barrels	TB ORD 437
<i>d. Issue of Supplies and Equipment.</i>	
Requisitioning, Receipt, and Issue System	AR 725-50
<i>e. Logistics.</i>	
Malfunctions Involving Ammunition and Explosives	AR 700-1300-8
<i>f. Maintenance of Supplies and Equipment.</i>	
Organization, Policies, and Responsibilities for	
Maintenance Operations	AR 750-5
<i>g. Safety.</i>	
Accident Reporting and Records	AR 385-40

APPENDIX B

**DIRECT SUPPORT, GENERAL SUPPORT, AND DEPOT
MAINTENANCE REPAIR PARTS AND SPECIAL TOOLS LIST**

Section I. INTRODUCTION

B-1. Scope

This appendix is a list of repair parts and special tools required for the performance of direct support, general support, and depot maintenance of the M1911A1, Caliber .45, Automatic, Pistol.

B-2. General

This repair parts and special tools list is divided into the following sections:

a. *Repair Parts—Section II.* A list of repair parts authorized for the performance of maintenance at the direct support, general support, and depot level in figure and item number sequence.

b. *Special Tools, Test and Support Equipment—Section III.* A list of special tools, test and support equipment authorized for the performance of maintenance at the direct support, general support, and depot level.

c. *Federal Stock Number and Reference Number Index—Section IV.* A list of Federal stock numbers in ascending numerical sequence followed by a list of referenced numbers in ascending alpha-numeric sequence, cross-referenced to the illustration figure number and item number.

B-3. Explanation of Columns

The following provides an explanation of columns in the tabular lists in sections II and III:

a. *Source, Maintenance, and Recoverability Codes (SMR), Column 1.*

(1) Source code, indicates the selection

status and source for the listed item. Source codes used are:

<i>Code</i>	<i>Explanation</i>
P	Repair parts which are stocked in or supplied from the GSA, DSA, or Army supply system, and authorized for use at indicated maintenance categories.
M	Repair parts which are not procured or stocked but are manufactured at indicated maintenance categories.
A	Assemblies which are not procured or stocked as such but are made up of two or more units, each of which carry individual FSNs and descriptions and are procured and stocked and can be assembled by units at indicated maintenance categories.
X	Parts and assemblies which are not procured or stocked; the mortality of which is normally below that of the applicable end item; and the failure of which should result in retirement of the end item from the supply system.
X1	Repair parts which are not procured or stocked, the requirements for which will be supplied by use of next higher assembly or component.
X2	Repair parts which are not stocked. The indicated maintenance category requiring such repair parts will attempt to obtain through cannibalization; if not obtainable through cannibalization, such repair parts will be requisitioned with supporting justification through normal channels.
C	Repair parts authorized for local procurement. When not obtainable from local procurement, such repair parts will be requisitioned through normal supply channels with a supporting statement of nonavailability from local procurement.
G	Major assemblies that are procured with PEMA funds for initial issue only to be used as exchange assemblies at DSU and GSU level. These assemblies will not be stocked above DSU and GSU level or returned to Depot supply level.

(2) Maintenance code, indicates the lowest category of maintenance authorized to install the listed item. The maintenance level codes are:

Code	Explanation
C	Operator/crew
O	Organizational Maintenance
F	Direct Support Maintenance
H	General Support Maintenance
D	Depot Maintenance

(3) Recoverability code, indicates whether unserviceable items should be returned for recovery or salvage. Items not coded are expendable. Recoverability codes are:

Code	Explanation
R	Repair parts and assemblies which are economically repairable at DSU and GSU activities and are normally furnished by supply on an exchange basis.
T	High dollar value recoverable repair parts which are subject to special handling and are issued on an exchange basis. Such repair parts are normally repaired or overhauled at depot maintenance activities.
U	Repair parts specifically selected for salvage by reclamation units because of precious metal content, critical materials, high dollar value, reusable casings, etc.
S	Repair parts and assemblies which are economically repairable at DSU and GSU activities and normally are furnished by supply on an exchange basis. However, when these items are determined to be uneconomically repairable by a GSU, they will be evacuated to a depot for evaluation and analysis before final disposition.

No Code Indicated Parts will be considered expendable.

b. *Federal Stock Number, Column 2.* This column indicates the Federal stock number assigned to the item and will be used for requisitioning purposes.

c. *Description, Column 3.* This column indicates the Federal item name and any additional description of the item required. The abbreviation "w/e" when used as a part of the nomenclature, indicates the Federal stock number includes all armament equipment, accessories, and repair parts issued with the item. A part number or other reference number is followed by the applicable five-digit Federal supply code for manufacturers in parentheses. Repair parts quantities included in the kits, sets, and assemblies are shown in front of the repair part name.

d. *Unit of Measure (U/M), Column 4.* A 2 character alphabetic abbreviation indicating the amount or quantity of the item upon which the allowances are based, e.g., ft, ea, pr, etc.

e. *Quantity Incorporated in Unit, Column 5.* This column indicates the quantity of the item used in a functional group or assembly. A "V" appearing in this column in lieu of a quantity indicates that a definite quantity cannot be indicated (e.g., shims, spacers, etc.).

f. *30-Day DS/GS Maintenance Allowances, Columns 6, and 7.*

Note. Allowances in GS column are for GS maintenance only.

(1) The allowance columns are divided into three subcolumns. Indicated in each subcolumn, opposite the first appearance of each item, is the total quantity of items authorized for the number of equipments supported. Subsequent appearances of the same item will have the letters "REF" in the applicable allowance columns. Items authorized for use as required but not for initial stockage are identified with an asterisk in the allowance column.

(2) The quantitative allowances for DS/GS levels of maintenance will represent initial stockage for a 30-day period for the number of equipments supported.

(3) Determination of the total quantity of parts required for maintenance of more than 100 of these equipments can be accomplished by converting the equipment quantity to a decimal factor by placing a decimal point before the next to last digit of the number to indicate hundredths, and multiplying the decimal factor by the parts quantity authorized in the 51-100 allowance column. Example, authorized allowance for 51-100 equipments is 40; for 150 equipments multiply 40 by 1.50 or 60 parts required.

g. *1-Year Allowances Per 100 Equipments/Contingency Planning Purposes, Column 8.* This column indicates opposite the first appearance of each item the total quantity required for distribution and contingency planning purposes. The range of items indicates total quantities of all authorized items required to provide for adequate support of 100 equipments for one year.

h. *Depot Maintenance Allowance Per 100 Equipments, Column 9.* This column indicates opposite the first appearance of each item, the total quantity authorized for depot maintenance of 100 equipments. Subsequent appearances of the same item will have the letters "REF" in the allowance column. Items authorized for use as required but not for initial stockage are identified with an asterisk in the allowance column.

i. *Illustration, Column 10.* This column is divided as follows:

(1) *Figure Number, Column 10a.* Indicates the figure number of the illustration in which the item is shown.

(2) *Item Number, Column 10b.* Indicates the callout number used to reference the item in the illustration.

B-4. Special Information

a. Identification of the usable on codes included in column 3 of this publication are:

<i>Code</i>	<i>Used On</i>
	Parts without any code are used on either the Pistol, Caliber .45, Automatic, M1911A1 with Hip Holster or Pistol, Caliber .45, Automatic, M1911A1 with Shoulder Holster.
A	Pistol, Caliber .45, Automatic, M1911A1 with hip holster only.
B	Pistol, Caliber .45, Automatic, M1911A1 with shoulder holster only.

b. The following publications pertain to the Pistol, Caliber .45, Automatic, M1911A1 and its components.

FM 23-35	Pistols and Revolvers
TM 9-1005-211-12	Operator's and Organizational Maintenance Manual including Basic Issue Items List, Repair Parts and Special Tools and Equipment Lists.

B-5. How to Locate Repair Parts

a. When Federal stock number or reference number is unknown:

(1) *First.* Using the table of contents, determine the functional group or assembly within which the repair part belongs. This is

necessary since illustrations are prepared for functional groups or assemblies and listings are divided into the same groups.

(2) *Second.* Find the illustration covering the functional group or assembly to which the repair part belongs.

(3) *Third.* Identify the repair part on the illustration and note the illustration figure and item number of the repair part.

(4) *Fourth.* Using the Repair Parts Listing, find the functional group or assembly to which the repair part belongs and locate the illustration figure and item number noted on the illustration.

b. When Federal stock number or reference number is known:

(1) *First.* Using the Index of Federal Stock Numbers and Reference Numbers find the pertinent Federal stock number or reference number. This index is in ascending FSN sequence followed by a list of reference numbers in ascending alpha-numeric sequence, cross-referenced to the illustration figure number and item number.

(2) *Second.* Using the Repair Parts Listing, find the functional group or assembly of the repair part and the illustration figure number and item number referenced in the Index of Federal Stock Numbers and Reference numbers.

B-6. Abbreviations

<i>Abbreviations</i>	<i>Explanation</i>
cd-pltd	cadmium plated
cham	chamfer
fil-hd	fillister head
fl-ck-hd	flat countersunk head
fl-fil-hd	flat fillister head
o/a	over-all
phos-fin	phosphate finish
S	steel

B-7. Federal Supply Codes for Manufacturers

<i>Code</i>	<i>Manufacturer</i>
19204	Rock Island Arsenal Rock Island, Illinois
19205	Springfield Armory Springfield, Mass.
96906	Military Standard

Section II. REPAIR PARTS

(1) Source Maint. And Recov. Code	(2) Federal Stock No.	(3) Description	(4) Unit of Issue	(5) Qty. Inc. in Unit	(6) Direct Support 30-Day Maint. Allowance			(7) General Support 30-Day Maint. Allowance			(8) 1 Yr. Alw. Per 100 Equip/ Plann- ing	(9) Depot Maint. Alw. Per 100 Equip	(10) Illustration	
					(A) 1-20	(B) 21-50	(C) 51-100	(A) 1-20	(B) 21-50	(C) 51-100			(A) Fig. No.	(B) Item No.
REPAIR PARTS FOR:														
P	1005-550-8694	PISTOL, CAL. .45, AUTOMATIC, M1911A1	EA	1	2	2	2	2	2	24	48	B1	1	
P	1005-600-8595	MAJOR GROUPS AND ASSEMBLIES	EA	1	*	*	*	*	*	24	4	B1	2	
A	---	MAGAZINE, CARTRIDGE:	---	1	---	---	---	---	---	---	---	B1	3	
A	---	5508694 (19205)	---	1	---	---	---	---	---	---	---	B1	4	
P	1005-501-3201	STOP, SLIDE:	EA	1	*	*	*	*	*	24	8	B2	1	
P	1005-501-3200	6008595 (19205)	EA	1	*	*	*	*	*	24	8	B2	2	
P	1005-600-8597	SLIDE GROUP	EA	1	*	*	*	*	*	24	4	B2	3	
P	1005-600-8596	RECEIVER GROUP	EA	1	*	*	*	*	*	24	4	B2	4	
P	1005-722-3849	SLIDE GROUP	EA	1	*	*	*	*	*	24	20	B2	5	
P	5315-501-3199	PLUG, RECOIL SPRING:	EA	1	2	2	2	2	2	24	15	B2	6	
P	1005-501-3198	5013201 (19205)	EA	1	*	*	*	*	*	24	5	B2	7	
P	1005-501-3205	SPRING, HELICAL, COMPRESSION: 30	EA	1	*	*	*	*	*	24	10	B2	8	
P	1005-600-8599	COILS, RECOIL	EA	1	*	*	*	*	*	24	5	B2	9	
P	1005-501-3204	5013200 (19205)	EA	1	*	*	*	*	*	24	8	B2	10	
P	1005-600-8598	GUIDE, RECOIL SPRING:	EA	1	*	*	*	*	*	24	8	B2	10	
P	1005-876-4033	6008597 (19205)	EA	1	*	*	*	*	*	24	4	B2	12	
P	1005-876-4033	BEARING, BARREL:	EA	1	*	*	*	*	*	24	4	B2	4	
P	1005-876-4033	6008596 (19205)	EA	1	*	*	*	*	*	24	20	B2	5	
P	1005-876-4033	BARREL, PISTOL:	EA	1	*	*	*	*	*	24	15	B2	6	
P	1005-876-4033	7791193 (19205)	EA	1	2	2	2	2	2	24	15	B2	6	
P	1005-501-3199	PIN, STRAIGHT, HEADLESS: S, 0.1555	EA	1	2	2	2	2	2	24	15	B2	6	
P	1005-501-3198	MAX DIA, 0.358 O/A LG (BARREL	EA	1	2	2	2	2	2	24	15	B2	6	
P	1005-501-3198	LINK)	EA	1	2	2	2	2	2	24	15	B2	6	
P	1005-501-3198	5013199 (19205)	EA	1	2	2	2	2	2	24	15	B2	6	
P	1005-501-3198	LINK, BARREL:	EA	1	2	2	2	2	2	24	15	B2	6	
P	1005-501-3205	5013198 (19205)	EA	1	2	2	2	2	2	24	15	B2	6	
P	1005-600-8599	STOP, FIRING PIN:	EA	1	*	*	*	*	*	24	10	B2	8	
P	1005-600-8599	5013205 (19205)	EA	1	*	*	*	*	*	24	10	B2	8	
P	1005-501-3204	PIN, FIRING:	EA	1	*	*	*	*	*	24	5	B2	9	
P	1005-501-3204	6008599 (19205)	EA	1	*	*	*	*	*	24	5	B2	9	
P	1005-600-8598	SPRING, HELICAL, COMPRESSION: 40	EA	1	*	*	*	*	*	24	8	B2	10	
P	1005-600-8598	COILS FIRING PIN	EA	1	*	*	*	*	*	24	8	B2	10	
P	1005-600-8598	5013204 (19205)	EA	1	*	*	*	*	*	24	8	B2	10	
P	1005-876-4033	EXTRACTOR, SMALL ARMS CARTRIDGE:	EA	1	*	*	*	*	*	24	8	B2	10	
P	1005-876-4033	6008598 (19205)	EA	1	*	*	*	*	*	24	8	B2	10	
P	1005-876-4033	SLIDE, AUTOMATIC PISTOL	EA	1	---	---	---	---	---	24	4	B2	12	
P	1005-876-4033	7790353 (19205)	EA	1	---	---	---	---	---	24	4	B2	12	

P	F	1005-501-3196	SIGHT, REAR: S, 0.245 H, 0.626 LG 5013196 (19205)	EA	1	*	*	2	*	2	24	4	B2	13
P	F	1005-501-3197	SIGHT, FRONT: 5013197 (19205)	EA	1	*	*	2	*	2	24	8	B2	14
X1		-----	SLIDE: 7790314	---	1	---	---	---	---	---	---	---	B2	15
P	F	1005-550-3840	RECEIVER GROUP SAFETY, SMALL ARMS: 5503840 (19205)	EA	1	*	*	2	*	2	24	8	B3	1
P	F	1005-501-3212	PIN, MAINSPRING HOUSING: 5013212 (19205)	EA	1	*	*	2	*	2	24	4	B3	2
P	F	1005-650-1828	SAFETY, GUN GRIP: 6501828 (19205)	EA	1	*	*	2	*	2	24	4	B3	3
P	D	1005-556-4058	HOUSING, ASSEMBLY, MAINSPRING: 5564058 (19205)	EA	1	---	---	---	---	---	---	5	B3	4
P	F	5315-844-4790	PIN, SPRING: TUBULAR, SLOTTED, BOTH ENDS CHAM, S, CD-PLTD, 0.093 DIA, 0.500 LG, 0.022 STK THK MS 16562-25 (96906)	EA	1	*	*	2	*	2	24	2	B3	5
P	F	1005-501-3214	LOOP, LANYARD: U SHAPE, 0.107 STK DIA, 1/2 LG 5013214 (19205)	EA	1	*	*	2	*	2	24	2	B3	6
X1		-----	HOUSING, MAINSPRING: 5503841	---	---	---	---	---	---	---	---	---	B3	7
P	F	5315-501-3210	PIN, STRAIGHT, HEADED: FL-CK-HD, S, 0.084 SHANK DIA, 0.369 LG (MAIN- SPRING HOUSING) 5013210 (19205)	EA	1	*	*	2	*	2	24	4	B3	8
P	F	5315-501-3209	PIN, STRAIGHT, HEADED: FL-FIL-HD, S, 0.174 SHANK DIA, 0.608 LG (MAIN- SPRING CAP) 5013209 (19205)	EA	1	*	*	2	*	2	24	4	B3	9
P	F	1005-501-3208	SPRING, HELICAL, COMPRESSION: S, 21.5 COILS, HOUSING ASSY 5013208 (19205)	EA	1	*	2	2	*	2	24	5	B3	10
P	F	1005-501-3213	PLUNGER, DETENT: 5013213 (19205)	EA	1	*	*	2	*	2	24	4	B3	11
P	O	1005-600-8602	SPRING, SEAR: 6008602 (19205)	EA	1	*	2	2	*	2	24	12	B3	12
P	F	5315-501-3206	PIN, STRAIGHT, HEADED: FL-CK-HD, S, 0.157 MAX SHANK DIA, 0.786 LG UNDER HD (HAMMER) 5013206 (19205)	EA	1	*	*	2	*	2	24	5	B3	13
P	F	1005-980-1743	HAMMER, FIRING, SMALL ARMS: 7790803 (19205)	EA	1	*	*	2	*	2	24	4	B3	14

Section II. REPAIR PARTS—Continued

(1) Source, Maint. And Recov. Code	(2) Federal Stock No.	(3) Description	(4) Unit of Issue	(5) Qty. Inc. in Unit	(6) Direct Support 30-Day Maint. Allowance			(7) General Support 30-Day Maint. Allowance			(8) 1 Yr. Alw. Per 100 Equip/ Plan- ning	(9) Depot Maint. Alw. Per 100 Equip	(10) Illustration	
					(A) 1-20	(B) 21-50	(C) 51-100	(A) 1-20	(B) 21-50	(C) 51-100			(A) Fig. No.	(B) Item No.
P F	5315-501-3207	PIN, STRAIGHT, HEADLESS: S, PHOS- FIN., 0.96 MAX DIA, 0.305 O/A LG (HAMMER STRUT) 5013207 (19205)	EA	1	*	2	2	*	2	2	5	B3	15	
P O	1005-600-8600	STRUT, HAMMER: 6008600 (19205)	EA	1	*	*	2	*	2	2	4	B3	16	
P F	5315-501-3211	PIN, STRAIGHT, HEADED: FL-CK-HD, S, 0.110 MAX SHAFT DIA, 0.780 MAX LG UNDER HD (SEAR) 5013211 (19205)	EA	1	*	*	2	*	*	2	4	B3	17	
P F	1005-592-9974	SEAR: 7268068 (19205)	EA	1	*	2	2	*	2	2	16	B3	18	
P F	1005-600-8603	DISCONNECTOR, RECEIVER ASSEMBLY: 6008603 (19205)	EA	1	*	2	2	*	2	2	16	B3	19	
P F	1005-600-8609	CATCH, MAGAZINE: 6008609 (19205)	EA	1	*	*	2	*	*	2	4	B3	20	
P F	1005-501-3218	LOCK, MAGAZINE CATCH: 5013218 (19205)	EA	1	*	*	2	*	*	2	8	B3	21	
P F	1005-501-3217	SPRING, HELICAL, COMPRESSION: 13 COILS MAGAZINE CATCH 5013217 (19205)	EA	1	*	*	2	*	*	2	10	B3	22	
P F	1005-614-7780	TRIGGER: 6147780 (19205)	EA	1	*	*	2	*	*	2	4	B3	23	
P F	5315-501-3203	PIN, STRAIGHT, HEADLESS: S, 0.063 MAX DIA, 39/64 O/A LG (EJECTOR) 5013203 (19205)	EA	1	*	*	2	*	*	2	4	B3	24	
P F	1005-903-8192	EJECTOR, CARTRIDGE: 11010485 (19205)	EA	1	*	*	2	*	*	2	4	B3	25	
P O	5305-601-9023	SCREW, MACHINE: FIL-HD, S, PHOS- CTD, 0.150-5 ONS, 0.260 O/A LG (GRIP) 6019023 (19205)	EA	4	2	2	2	2	2	2	16	B3	26	
P O	1005-556-4063	GRIP, PISTOL: LH, PLASTIC, CHECKERED 5564063 (19205)	EA	1	*	2	2	*	2	2	10	B3	27	
P O	1005-556-4062	GRIP, PISTOL: RH, PLASTIC, CHECKERED 5564062 (19205)	EA	1	*	2	2	*	2	2	10	B3	28	

P	F	1005-601-9022	BUSHING, STOCK SCREW: RECEIVER ASSY	EA	4	*	*	2	*	*	2	24	8	B3	29
			6019022 (19205)												
P	F	1005-501-3195	PLUNGER, SAFETY:	EA	1	*	*	2	*	*	2	24	4	B3	30
			5013195 (19205)												
P	O	1005-501-3194	SPRING, HELICAL, COMPRESSION: 14-1/2 COILS, PLUNGER	EA	1	*	2	2	*	*	2	24	8	B3	31
			5013194 (19205)												
P	F	1005-501-3193	PLUNGER, SLIDE STOP:	EA	1	*	*	2	*	*	2	24	4	B3	32
			5013193 (19205)												
P	F	1005-600-8594	TUBE, PLUNGER:	EA	1	*	2	2	*	*	2	24	8	B3	33
			6008594 (19205)												
X1		-----	RECEIVER: 6535359	---	1	---	---	---	---	---	---	---	---	B3	34

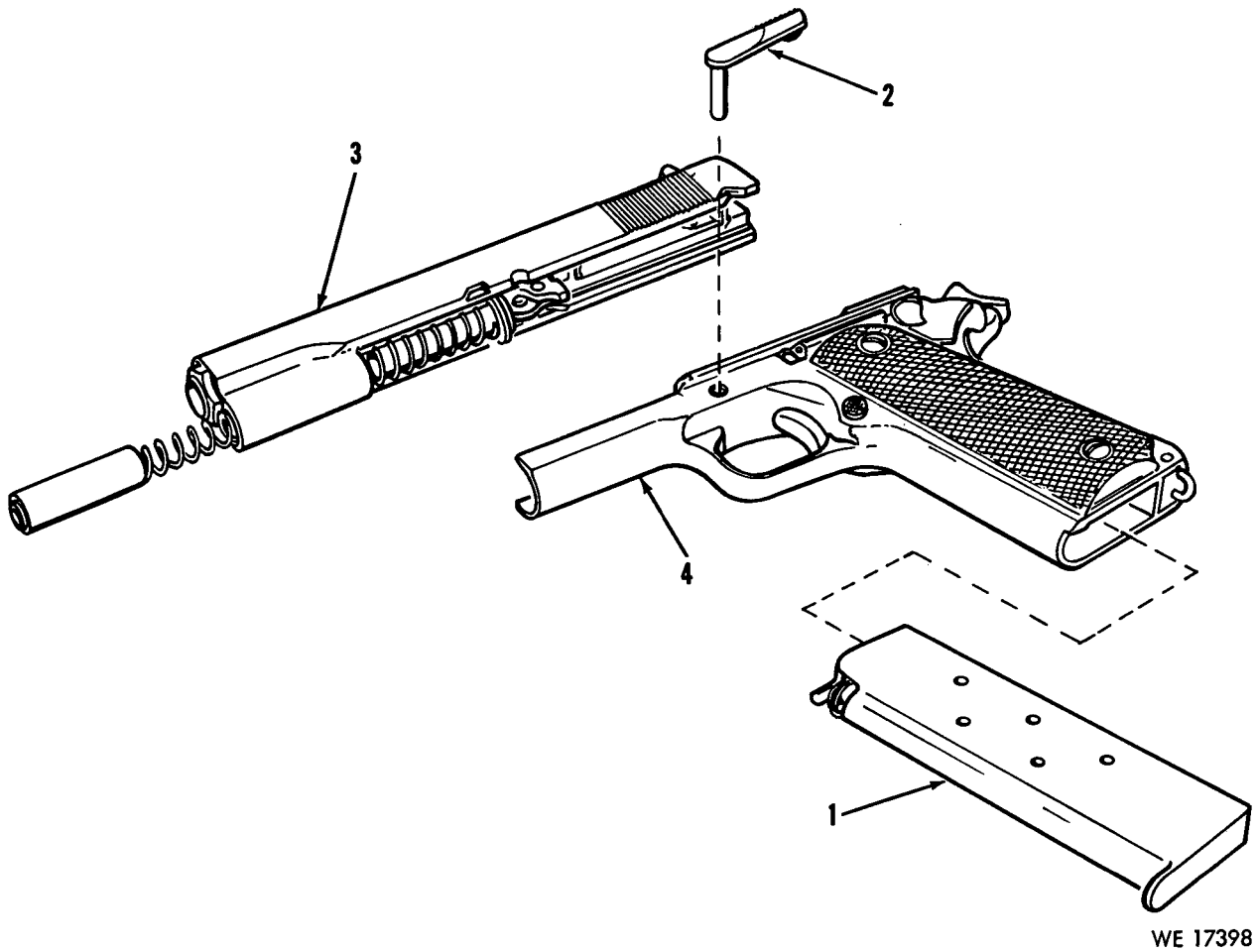


Figure B-1. Major groups and assemblies—partial exploded view.

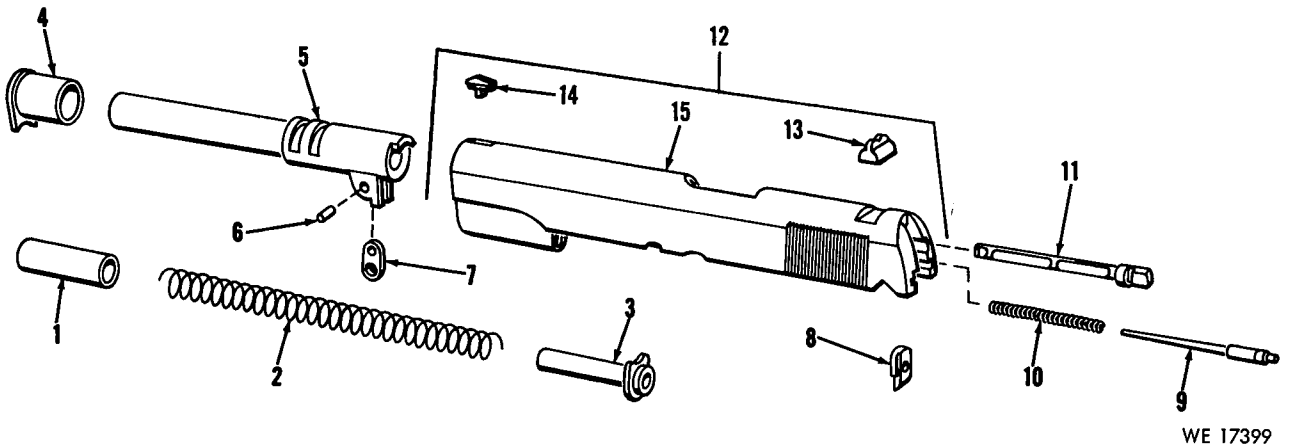
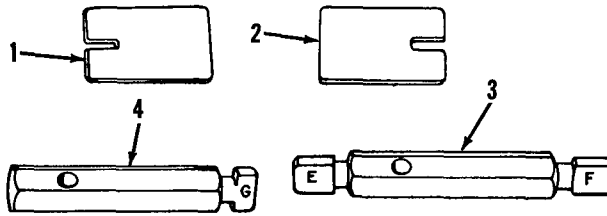


Figure B-2. Slide group—exploded view.



WE 18851

Figure B-4. Tools and equipment.

Section IV. INDEX—FEDERAL STOCK NUMBER AND REFERENCE NUMBER CROSS-REFERENCE TO FIGURE AND ITEM NUMBER

Stock Number	Figure No.	Item No.	Stock Number	Figure No.	Item No.
1005-501-3193	B-3	32	1005-600-8598	B-2	11
1005-501-3194	B-3	31	1005-600-8599	B-2	9
1005-501-3195	B-3	30	1005-600-8600	B-3	16
1005-501-3196	B-2	13	1005-600-8602	B-3	12
1005-501-3197	B-2	14	1005-600-8603	B-3	19
1005-501-3198	B-2	7	1005-600-8609	B-3	20
1005-501-3200	B-2	2	1005-601-9022	B-3	29
1005-501-3201	B-2	1	1005-614-7780	B-3	23
1005-501-3204	B-2	10	1005-650-1828	B-3	3
1005-501-3205	B-2	8	1005-722-3849	B-2	5
1005-501-3208	B-3	10	1005-876-4033	B-2	12
1005-501-3212	B-3	2	1005-903-8192	B-3	25
1005-501-3213	B-3	11	1005-980-1743	B-3	14
1005-501-3214	B-3	6	4933-731-9912	B-4	1
1005-501-3217	B-3	22	4933-731-9913	B-4	2
1005-501-3218	B-3	21	4933-731-9915	B-4	3
1005-550-3840	B-3	1	5220-731-9916	B-4	4
1005-550-8694	B-1	1	5305-601-9023	B-3	26
1005-556-4058	B-3	4	5315-501-3199	B-2	6
1005-556-4062	B-3	28	5315-501-3203	B-3	24
1005-556-4063	B-3	27	5315-501-3206	B-3	13
1005-592-9974	B-3	18	5315-501-3207	B-3	15
1005-600-8594	B-3	33	5315-501-3209	B-3	9
1005-600-8595	B-1	2	5315-501-3210	B-3	8
1005-600-8596	B-2	4	5315-501-3211	B-3	17
1005-600-8597	B-2	3	5315-844-4790	B-3	5

Reference Number	Mfg. Code	Figure Number	Item Number	Reference Number	Mfg. Code	Figure Number	Item Number
MS 16562-25	96906	B-3	5	5013207	19205	B-3	15
5013193	19205	B-3	32	5013208	19205	B-3	10
5013194	19205	B-3	31	5013209	19205	B-3	9
5013195	19205	B-3	30	5013210	19205	B-3	8
5013196	19205	B-2	13	5013211	19205	B-3	17
5013197	19205	B-2	14	5013212	19205	B-3	2
5013198	19205	B-2	7	5013213	19205	B-3	11
5013199	19205	B-2	6	5013214	19205	B-3	6
5013200	19205	B-2	2	5013217	19205	B-3	22
5013201	19205	B-2	1	5013218	19205	B-3	21
5013203	19205	B-3	24	5503840	19205	B-3	1
5013204	19204	B-2	10	5503841		B-3	7
5013205	19205	B-2	8	5508694	19205	B-1	1
5013206	19205	B-3	13	5564058	19205	B-3	4

<i>Reference Number</i>	<i>Mfg. Code</i>	<i>Figure Number</i>	<i>Item Number</i>	<i>Reference Number</i>	<i>Mfg. Code</i>	<i>Figure Number</i>	<i>Item Number</i>
5564062	19205	B-3	28	6147780	19205	B-3	23
5564063	19205	B-3	27	6501828	19205	B-3	3
6008594	19205	B-3	33	6535359		B-3	34
6008595	19205	B-1	2	7268068	19205	B-3	18
6008596	19205	B-2	4	7319912	19205	B-4	1
6008597	19205	B-2	3	7319913	19205	B-4	3
6008598	19205	B-2	11	7319915	19205	B-4	3
6008599	19205	B-2	9	7319916	19205	B-4	4
6008600	19205	B-3	16	7790314		B-2	15
6008602	19205	B-3	12	7790353	19205	B-2	12
6008603	19205	B-3	19	7790803	19205	B-3	14
6008609	19205	B-3	20	7791193	19205	B-2	5
6019022	19205	B-3	29	11010485	19205	B-3	25
6019023	19205	B-3	26				

By Order of the Secretary of the Army:

HAROLD K. JOHNSON,
General, United States Army,
Chief of Staff.

Official:

KENNETH G. WICKHAM,
Major General, United States Army,
The Adjutant General.

Distribution:

To be distributed in accordance with DA Form 12-40 requirements for Direct and General Support for Pistol, Cal. 45 automatic, M1911A1.

cf 2

CHANGE }
No. 1 }

HEADQUARTERS
DEPARTMENT OF THE ARMY
WASHINGTON, D. C., 17 February 1969

**Direct Support, General Support,
and Depot Maintenance Manual
Including Repair Parts and
Special Tool Lists**

**PISTOL, CALIBER .45, AUTOMATIC: M1911A1,
WITH HOLSTER, HIP, W/E
(1005-673-7965)**

**PISTOL, CALIBER .45, AUTOMATIC: M1911A1,
WITH HOLSTER, SHOULDER, W/E
(1005-561-2003)**

TM 9-1005-211-35, 4 April 1968, is changed as follows:

Page 1-1. Add the following note after paragraph 1-1.

Note. All maintenance data, repair parts and special tools and equipment in this manual are used to maintain Caliber .45 Pistol M1911; as applicable.

Page 2-3, table 2-2:

Probable causes column. After Worn cock notch, Add "Worn sear."

Corrective action column. After Replace hammer, 14, fig B-3, Add "Replace sear, 18, fig B-3."

Page 2-5, table 2-3:

Spot check, Command, and Preembarkation columns. Add "X" opposite Trigger Pull:

Action column. Line 35, Change to read: Inspect the barrel bearing for burs and elongation.

Line 45, Change to read: Inspect the recoil *** damage or deformity. The recoil spring must exhibit a free length of not more than 6¾ inches or less than 6¼ inches.

After last sentence. Add the following note.

Note. Recoil spring plugs will not be declared unserviceable when the retaining tab is damaged or broken. There is no change in weapon functioning or impairment of personnel safety when plugs without tabs are utilized.

Page 3-1.

3-2. General Repair Methods

* * * * *

b. Replacement of Parts.

* * * * *

(2) (Superseded) When assembling a unit, replace unserviceable pins and screws.

* * * * *

Page 3-3.

3-6. Correcting Trigger Pull

* * * * *

b. Trigger Pull Exercise. This is evidence *** other probable causes. If the trigger pull cannot be corrected by stoning or changing magazine assemblies, replace components, as required.

c. Creep in Trigger.

Change last sentence to read: If the creep cannot be corrected by stoning, replace components, as required.

RETURN TO ARMY LIBRARY
ROOM 1 A 513 PENTAGON

Section II. REPAIR PARTS

Page No.	Action	(1) Source maint. and recov. code			(2) Federal stock No.	(3) Description	(4) Unit of meas.	(5) Qty. inc. in unit	(6) Direct support 30-day maint. allowance			(7) General support 30-day maint. allowance			(8) 1-Yr. alw per 100 equip. cntgcy	(9) Depot alw per 100 equip.	(10) Illustration	
		(a)	(b)	(c)					(a)	(b)	(c)	(a)	(b)	(c)			(a)	(b)
B-4	Change colm 1b Change colm 1a Change colm 10b Change colms 1b and 7a, b and c	X1	H		1005-600-8598 1005-556-4058	SLIDE GROUP RECEIVER GROUP EXTRACTOR, *** HOUSING, ***												
Section III. SPECIAL TOOLS, TEST AND SUPPORT EQUIPMENT																		
B-9	Change colm 3				5220-731-9916	2 — GAGE, *** 0.7055 OD 7319916 (19205)												11

By Order of the Secretary of the Army:

Official:

KENNETH G. WICKHAM,
Major General, United States Army,
The Adjutant General.

W. C. WESTMORELAND,
General, United States Army,
Chief of Staff.

Distribution:

To be distributed in accordance with DA Form 12-40 (qty rqr block no. 117) direct and general support maintenance requirements for the Pistol, Cal. .45, M1911A1.

CM 2

Changes in force: C 1, C 2

TM 9-1005-211-35
C 2

CHANGE }
No. 2 }

HEADQUARTERS
DEPARTMENT OF THE ARMY
WASHINGTON, D. C., 24 June 1969

**Direct Support, General Support, and Depot Maintenance Manual
Including Repair Parts and Special Tool Lists**

**PISTOL, CALIBER .45, AUTOMATIC:
M1911A1, WITH HOLSTER, HIP, W/E
(1005-673-7965)**

**PISTOL, CALIBER 45, AUTOMATIC:
M1911A1, WITH HOLSTER, SHOULDER, W/E
(1005-561-2003)**

TM 9-1005-211-35, 4 April 1968, is changed as follows:

RETURN TO ARMY LIBRARY
ROOM 1 A 518 PENTAGON

Page 2-5 (Changed by C1 and further changed as follows:)

Table 2-3. Inspection Procedures—Continued

Inspection of Material In Hands of Troops		Direct and General Support Inspections		Premarkation Inspection	Action	Reference
Spot check	Command	Initial	In-process			
*	*	*	*	*	GENERAL * * * * *	* *
X	X	X	SPECIFIC (Superseded) Safety tests and disconnecter test. Trigger pull: Max. 6.5 pounds Min. 5.0 pounds Magazine Assembly Slide Group	TM 9-1005-211-12 Para 3-5
X	X	X	X	Inspect barrel (5, fig B-2) for burrs on exterior and interior rim of the muzzle. Inspect for pitting, bulges and sharpness of lands. Barrel must be straight, as determined visually, clean and free of corrosion. Pits in the chamber are allowable if they are not large enough to cause extraction difficulties. Pits as wide as a land or groove and less than 3/8 inch are allowable. Barrels containing pits as indicated in figure 2-5, will be rejected. Scattered or uniformly fine pits or pits in a densely pitted area are allowable. Surface tool marks and scratches are acceptable regardless of length. Tool marks will appear on lines running laterally in the grooves or may run spirally across the top of lands. Definitely ringed bores or bores ringed sufficiently to bulge the outside surface of the barrel are cause for rejection. However, faint rings or shadowy depressions do not indicate an unserviceable barrel and should not be cause for rejection. Barrels will be rejected if worn enough to affect sharpness of the lands. Pits cutting into lands are acceptable, within the limitations described above. Lands that appear dark due to coating or gilding metal from projectiles should not be cause for rejection.	TM 9-1005-211-12 Fig 2-5
X	X	X	X	X	Inspect the barrel bearing for burrs and elongation. Inspect the slide for breaks and cracks especially around the ejector port. Inspect the interior grooves and ejector port of slide for excessive wear or burrs. Check for loose front or rear sights.	4, fig B-2 12, fig B-2
X	X	X	X	X	The ejector will be examined for burrs, cracking and looseness. If any of these is evidenced the ejector will be repaired or replaced.	
X	X	X	X	X	Inspect the firing pin for wear or shortness. The pin, as manufactured, has an overall length of 2.290 to 2.296 inches.	9, fig B-2

Inspection of Material In Hands of Troops	Direct and General Support Inspections		Preembarkation Inspection	Action	Reference
	Command	Initial			
Spot check	X	X	X	<p>Inspect the recoil and firing pin springs for damage or deformity. the recoil spring must exhibit not less than 6 or more than 6 7/8 inches overall length. The number of coils, not less than 28 or more than 32 including half coils.</p> <p>Spring must not exhibit weakness, distortion or kinks. There will be no flat surface on the contour. Uniform diameter of all coils is permissible.</p> <p>A "flat" appearance on either end of the half coil is not required.</p> <p>Inspect the extractor for wear, weakness, broken lip or deformation.</p> <p>Inspect the recoil spring plug, recoil spring guide, firing pin stop, barrel link and pin for burs or distortions.</p> <p><i>Note:</i> Recoil spring plugs will not be declared unserviceable when the retaining tab is damaged or broken. There is no change in weapon functioning or impairment of personnel safety when tabless plugs are utilized.</p>	<p>3 and 10, fig B-2</p> <p>11, fig B-2 Fig B-2</p>
Command	X	X	X		
Initial	X	X	X	*	*
In-process	X	X	X	*	*
Preembarkation Inspection	X	X	X	*	*

By Order of the Secretary of the Army:

W. C. WESTMORELAND,
General, United States Army,
Chief of Staff.

Official:

KENNETH G. WICKHAM,
Major General, United States Army,
The Adjutant General.

Distribution:

To be distributed in accordance with DA Form 12-40 (qty rqr Block #117), Direct and General Support requirements for Pistol, Cal. .45 Automatic, M1911A1.

☆U.S. GOVERNMENT PRINTING OFFICE: 1969-342-018/3398

42

Changes in force: C 1, C 2 and C 3

TM 9-1005-211-35
C 3

Change }
No. 3 }

HEADQUARTERS
DEPARTMENT OF THE ARMY
Washington, D.C. 17 December 1970

**Direct Support, General Support, and Depot Maintenance Manual
Including Repair Parts and Special Tools Lists**

**PISTOL, CALIBER .45, AUTOMATIC:
M1911A1, WITH HOLSTER, HIP, W/E
(1005-673-7965)**

**PISTOL, CALIBER .45, AUTOMATIC:
M1911A1, WITH HOLSTER, SHOULDER, W/E
(1005-561-2003)**

RETURN TO ARMY LIBRARY
ROOM 1 A 518 PENTAGON

By Order of the Secretary of the Army:

W. C. WESTMORELAND,
General, United States Army,
Chief of Staff.

Official:

KENNETH G. WICKHAM,
Major General, United States Army,
The Adjutant General.

Distribution:

To be distributed in accordance with DA Form 12-40 (qty rqr block No. 117) direct and general support maintenance requirements for Pistol, Cal. .45, Automatic M1911A1.

☆ U.S. GOVERNMENT PRINTING OFFICE: 1970—431125/642

Changes in force: C 1, C 2, C 3, and C 4.

TM 9-1005-211-35

CHANGE 4

CHANGE)
)
No. 4)

HEADQUARTERS
DEPARTMENT OF THE ARMY
WASHINGTON, DC, 25 February 1976

Direct Support, General Support and Depot Maintenance Manual
Including Repair Parts and Special
Tool Lists:

**PISTOL, CAL .45, AUTOMATIC: M1911A1, WITH HOLSTER, W/E
(1005-00-673-7965)**

**PISTOL, CAL .45, AUTOMATIC: M1911A1, WITH HOLSTER,
SHOULDER, W/E (1005-00-561-2003)**

Current as of 28 November 1975.

TM 9-1005-211-35, 4 April 1968, is changed as follows:

Title is changed as shown above.

Appendix B is superseded as follows:

**RETURN TO ARMY LIBRARY
ROOM 1 A 518 PENTAGON**

APPENDIX B

DIRECT SUPPORT AND GENERAL SUPPORT MAINTENANCE REPAIR PARTS AND SPECIAL TOOLS LIST (INCLUDING DEPOT MAINTENANCE REPAIR PARTS AND SPECIAL TOOLS)

SECTION I. INTRODUCTION

B-1. Scope

This appendix lists repair parts; special tools; test, measurement, and diagnostic equipment (TMDE); and other support equipment required for the performance of direct support and general support maintenance of the .45 cal automatic pistol.

B-2. General

This repair parts and special tools list is divided into the following sections:

a. Section II. Repair Parts List. A list of repair parts authorized for use in the performance of maintenance. The list also includes parts which must be removed for replacement of the authorized parts. Parts lists are composed of functional groups in ascending numerical sequence, with the parts in each group listed in figure and item number sequence. Bulk materials are listed in NSN sequence.

b. Section III. Special Tools List. A list of special tools, TMDE, and support equipment authorized for the performance of maintenance.

c. Section IV. National Stock Number (NSN) and Part Number Index. A list, in ascending numerical sequence of the National Item Identification Number (NIIN), of all National stock numbers appearing in the listings, followed by a list, in alphameric sequence, of all part numbers appearing in the listings. National stock numbers and part numbers are cross-referenced to each illustration figure and item number appearance.

B-3. Explanation of Columns

The following provides an explanation of columns found in the tabular listings:

a. Illustration. This column is divided as follows:

(1) *Figure number.* Indicates the figure number of the illustration in which the item is shown.

(2) *Item number.* The number used to identify each item called out in the illustration.

b. Source, Maintenance, and Recoverability Codes (SMR).

(1) *Source code.* Source codes are assigned to support items to indicate the manner of acquiring

support items for maintenance, repair, or overhaul of end items. Source codes are entered in the first and second positions of the Uniform SMR Code format as follows:

Code Definition

PA Item procured and stocked for anticipated or known usage.

PB Item procured and stocked for insurance purposes because essentiality dictates that a minimum quantity be available in the supply system.

PC Item procured and stocked and which otherwise would be coded PA except that it is deteriorative in nature.

PD Support item, excluding support equipment, procured for initial issue or outfitting and stocked only for subsequent or additional initial issues or outfittings. Not subject to automatic replenishment.

PE Support equipment procured and stocked for initial issue or outfitting to specified maintenance repair activities.

PF Support equipment which will not be stocked but which will be centrally procured on demand.

PG Item procured and stocked to provide for sustained support for the life of the equipment. It is applied to an item peculiar to the equipment which,

Code Definition

because of probable discontinuance or shutdown of production facilities, would prove uneconomical to reproduce at a later time.

KD An item of a depot overhaul/repair kit and not purchased separately. Depot kit defined as a kit that provides items required at the time of overhaul or repair.

KF An item of a maintenance kit and not purchased separately. Maintenance kit defined as a kit that provides an item that can be replaced at organizational or intermediate levels of maintenance.

KB Item included in both a depot overhaul/repair kit and a maintenance kit.

MO Item to be manufactured or fabricated at organizational level.

MF Item to be manufactured or fabricated at the direct support maintenance level.

MH Item to be manufactured or fabricated at the general support maintenance level.

MD Item to be manufactured or fabricated at the depot maintenance level.

AO Item to be assembled at organizational level.

AF Item to be assembled at direct support maintenance level.

Code	Definition
AH	Item to be assembled at general support maintenance level.
AD	Item to be assembled at depot maintenance level.
XA	Item is not procured or stocked because the requirements for the item will result in the replacement of the next higher assembly.
XB	Item is not procured or stocked. If not available through salvage, requisition.
XD	A support item that is not stocked. When required, item will be procured through normal supply channels.

NOTE

Cannibalization or salvage may be used as a source of supply for any item source coded above, except those coded XA, XD, and aircraft support items as restricted by AR 700-42.

(2) **Maintenance code.** Maintenance codes are assigned to indicate the levels of maintenance authorized to USE and REPAIR support items. The maintenance codes are entered in the third and fourth positions of the Uniform SMR Code format as follows:

(a) The maintenance code entered in the third position will indicate the lowest maintenance

level authorized to remove, replace, and use the support item. The maintenance code entered in the third position will indicate one of the following levels of maintenance:

Code	Application/ explanation
C	Crew or operator maintenance performed within organizational maintenance.
O	Support item is removed, replaced, used at the organizational level.
I	Support item is removed, replaced, used by the direct support element of integrated direct support maintenance.
F	Support item is removed, replaced, used at the direct support level.
H	Support item is removed, replaced, used at the general support level.
D	Support items that are removed, replaced, used at depot, mobile depot, specialized repair activity only.

NOTE

Codes "I" and "F" will be considered the same by direct support units.

(b) The maintenance code entered in the fourth position indicates whether the item is to be

repaired and identifies the lowest maintenance level with the capability to perform complete repair (i.e., all authorized maintenance functions). This position will contain one of the following maintenance codes:

(3) *Recoverability code.* Recoverability codes are assigned to support items to indicate the disposition action on unserviceable items. The recoverability code is entered in the fifth position of the Uniform SMR Code format as follows:

Code	Application/ explanation	Recoverability code	Definition
O	The lowest maintenance level capable of complete repair of the support item is the organizational level.	Z	Nonreparable item. When unserviceable, condemn and dispose at the level indicated in position 3.
F	The lowest maintenance level capable of complete repair of the support item is the direct support level.	O	Reparable item. When uneconomically repairable, condemn and dispose at organizational level.
H	The lowest maintenance level capable of complete repair of the support item is the general support level.	F	Reparable item. When uneconomically repairable, condemn and dispose at the direct support level.
D	The lowest maintenance level capable of complete repair of the support item is the depot level, performed by depot, mobile depot, or specialized repair activity.	H	Reparable item. When uneconomically repairable, condemn and dispose at the general support level.
L	Repair restricted to designated specialized repair activity.	D	Reparable item. When beyond lower level repair capability, return to depot. Condemnation and disposal not authorized below depot level.
Z	Nonreparable. No repair is authorized.	L	Reparable item. Repair, condemnation, and disposal not authorized below depot/specialized repair activity level.
B	No repair is authorized. The item may be reconditioned by adjusting, lubrication, etc, at the user level. No parts or special tools are procured for the maintenance of this item.	A	Item requires special handling or condemnation procedures because of specific reasons (i.e., precious metal content, high dollar value, critical material, or hazardous material). Refer to appropriate manuals/directives for specific instructions.

c. *National Stock Number (NSN)*. Indicates the National stock number assigned to the item and will be used for requisitioning purposes.

d. *Part Number*. Indicates the primary number used by the manufacturer (individual, company, firm, corporation, or Government activity), which controls the design and characteristics of the item by means of its engineering drawings, specifications, standards, and inspection requirements, to identify an item or range of items.

NOTE

When a stock numbered item is requisitioned, the repair part received may have a different part number than the part being replaced.

e. *Federal Supply Code for Manufacturer (FSCM)*. The FSCM is a five-digit numeric code listed in SB 708-42 which is used to identify the manufacturer, distributor, or Government agency, etc.

f. *Description*. Indicates the Federal item name and, if required, a minimum description to identify the item. Items that are included in kits and sets are listed below the name of the kit or set with the quantity of each item in the kit or set indicated in the quantity incorporated in unit column. When the part to be used differs between serial numbers of the same model, the effective serial numbers are shown as the last line of the description. In the special tools list, the initial basis of issue (BOI) appears as the last line in the entry for each special tool, TMDE, and support equipment. When the

density of the equipments supported exceeds density spread indicated in the basis of issue, the total authorization is increased accordingly.

g. *Unit of Measure (U/M)*. Indicates the standard or the basic quantity of the listed item as used in performing the actual maintenance function. This measure is expressed by a two-character alphabetical abbreviation (e.g., ea, in., pr, etc). When the unit of measure differs from the unit of issue, the lowest unit of issue that will satisfy the required units of measure will be requisitioned.

h. *Quantity Incorporated in Unit*. Indicates the quantity of the item used in the breakout shown on the illustration figure, which is prepared for a functional group, subfunctional group, or an assembly. A "V" appearing in this column in lieu of a quantity indicates that no specific quantity is applicable (e.g., shims, spacers, etc).

B-4. Special Information

a. Detailed manufacturing instructions for items source coded to be manufactured or fabricated are found in chapters 2 and 3. Bulk materials required to manufacture items are listed in the Bulk Material Group in section II of this appendix.

b. Detailed assembly instructions for items source coded to be assembled are found in chapters 2 and 3.

c. Repair parts kits and gasket sets appear as the last entries in the repair parts listing for the figure in which its parts are listed as repair parts.

d. Action change codes indicated in the left-hand margin of the listing page denote the following:

- N Indicates an added item
- C Indicates a change in data
- R Indicates a change in NSN only

e. Usable on codes are shown in the description column. Uncoded items are applicable to all models. Identification of the usable on codes used in this publication are:

Code	Used on
612 ...	Pistol, cal .45 automatic: M1911A1, w shoulder holster, w/e
163 ...	Pistol, cal .45 automatic: M1911A1 w holster, w/e

B-5. How to Locate Repair Parts

a. *When National Stock Number or Part Number is Unknown:*

(1) *First.* Using the table of contents determine the functional group within which the repair part belongs. This is necessary since illustrations are prepared for functional groups and listings are divided into the same groups.

(2) *Second.* Find the illustration covering the functional group to which the repair part belongs.

(3) *Third.* Identify the repair part on the illustration and note the illustration figure and item number of the repair part.

(4) *Fourth.* Using the repair parts listing, find the figure and item number noted on the illustration.

b. *When National Stock Number or Part Number is Known:*

(1) *First.* Using the index of National stock numbers and part numbers, find the pertinent National stock number or part number. This index is in ascending NIIN (the last nine figures of the NSN) sequence followed by a list of part numbers in ascending alphabetic sequence, cross-referenced to the illustration figure number and item number.

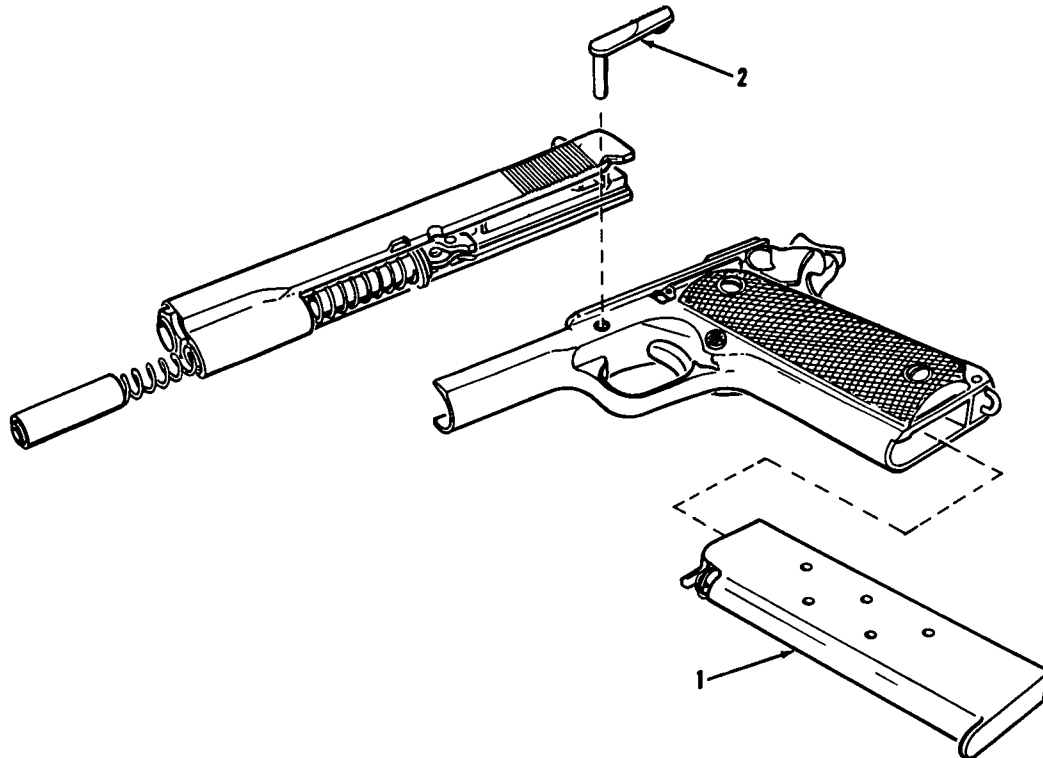
(2) *Second.* After finding the figure and item number, locate the figure and item number in the repair parts list.

B-6. Abbreviations

Abbreviation	Explanation
assy	assembly
cal	caliber
cd-pltd	cadmium plated
cham	chamfered
dia	diameter
fl-ck-hd	flat countersunk, head
h	height
lg	long/length
LH	left-hand
LOA	length overall
max	maximum
oa	overall
phos-ctd	phosphate coated
RH	right-hand
stk	stock
stl/S	steel
thk	thick

SECTION II. REPAIR PARTS LIST

(1) ILLUSTRATION		(2)	(3)	(4)	(5)	(6)	(7)	(8)
(a) FIG NO.	(b) ITEM NO.	SMR CODE	FEDERAL STOCK NUMBER	PART NUMBER	FSCM	DESCRIPTION	U/M	QTY INC IN UNIT
						<i>USABLE ON CODE</i>		
N B-1		XA		7265655	19204	GROUP 00 REPAIR PARTS FOR: PISTOL, CAL. 45, AUTOMATIC, MAJOR GROUPS AND ASSEMBLIES PISTOL, CALIBER .45, AUTOMATIC M1911A1 GROUP 01 PISTOL, CAL. 45, AUTOMATIC, MAJOR GROUPS AND ASSEMBLIES	EA	1
N B-1	1	PACZZ	1005-00-550-8694	5508694	19204	MAGAZINE, CARTRIDGE	EA	3
N B-1	2	PAFZZ	1005-00-600-8595	6008595	19204	STOP, SLIDE	EA	1



WE 17398

Figure B-1. Major groups and assemblies--partially exploded view.

(1) ILLUSTRATION		(2)	(3)	(4)	(5)	(6)	(7)	(8)
(a) FIG NO.	(b) ITEM NO.	SMR CODE	FEDERAL STOCK NUMBER	PART NUMBER	FSCM	DESCRIPTION <i>USABLE ON CODE</i>	U/M	QTY INC IN UNIT
						GROUP 101 SLIDE GROUP		
N B-2	1	PAFZZ	1005-00-501-3201	5013201	19204	PLUG, RECOIL SPRING	EA	1
N B-2	2	PAFZ	5360-00-501-3200	5013200	19204	SPRING, HELICAL, COMPRESSION 30 COILS, RECOIL	EA	1
N B-2	3	PAFZZ	1005-00-600-8597	6008597	19204	GUIDE, RECOIL SPRING	EA	1
N B-2	4	PAFZZ	3120-00-600-8596	6008596	19204	BEARING, BARREL	EA	1
N B-2	5	PAFZZ	1005-00-722-3849	7791193	19204	BARREL, PISTOL STL, PHOS-CTD, CAL. .45, 5.03 O/A L, 6 GROOVES, LH RIFLING	EA	1
N B-2	6	PAOZZ	5315-00-501-3199	5013199	19204	PIN, STRAIGHT, HEADLESS S, 0.1555 MAX DIA, 0.358 O/A LG BARREL LINK;	EA	1
N B-2	7	PAOZZ	1005-00-501-3198	5013198	19204	LINK, BARREL	EA	1
N B-2	8	PAOZZ	1005-00-501-3205	5013205	19204	STOP, FIRING PIN	EA	1
N B-2	9	PAOZZ	1005-00-600-8599	6008599	19204	PIN, FIRING	EA	1
N B-2	10	PAOZZ	5360-00-501-3204	5013204	19204	SPRING, HELICAL, COMPRESSION 40 COILS FIRING PIN	EA	1
N B-2	11	PAFZ	1005-00-600-8598	6008598	19204	EXTRACTOR, SMALL ARMS CARTRIDGE	EA	1
N B-2	12	PAHZ	1005-00-876-4033	7790353	19204	SLIDE, AUTOMATIC PISTOL	EA	1
N B-2	13	PAFZZ	1005-00-501-3196	5013196	19204	SIGHT, REAR OPEN NOTCH TYPE, STL, PHOS-CTD, 0.245 H, 0.626 LOA	EA	1
N B-2	14	PAFZZ	1005-00-501-3197	5013197	19204	SIGHT, FRONT BLADE TYPE, STL, PHOS-CTD, 0.416 LOA, 0.275 H	EA	1
N B-2	15	XA		7790314	19204	SLIDE	EA	1

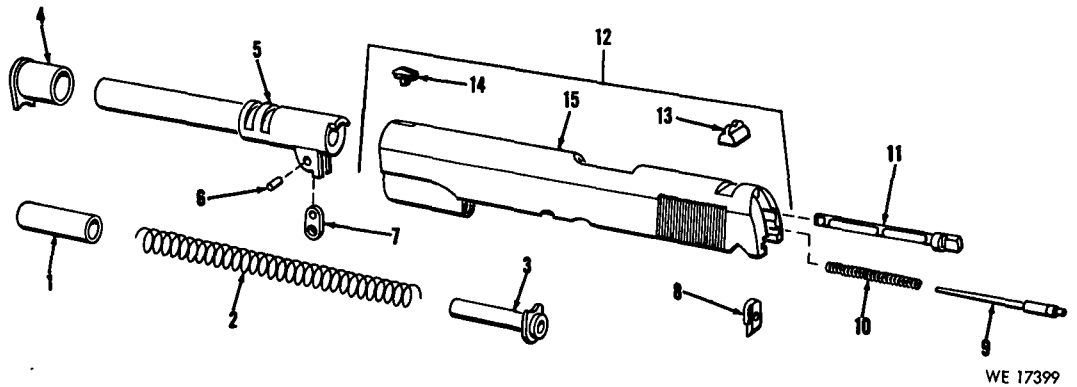
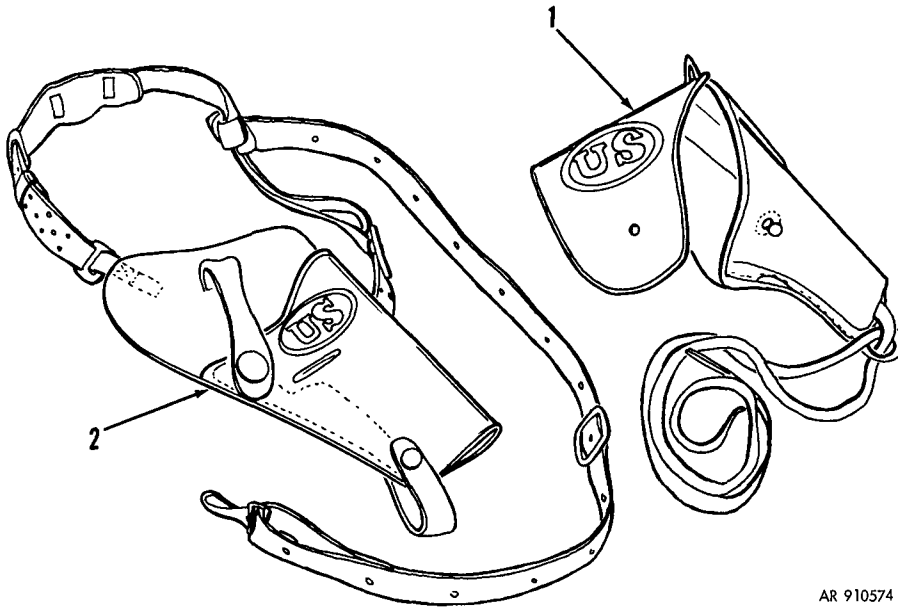


Figure B-2. Slide group.

(1) ILLUSTRATION		(2)	(3)	(4)	(5)	(6)	(7)	(8)
(a) FIG NO.	(b) ITEM NO.	SMR CODE	FEDERAL STOCK NUMBER	PART NUMBER	FSCM	DESCRIPTION USABLE ON CODE	U/M	QTY INC IN UNIT
						GROUP0102 RECEIVER GROUP		
N	B-3	1 PAFZZ	1005-00-550-3840	5503840	19204	SAFETY, SMALL ARMS	EA	1
N	B-3	2 PAFZ	5315-00-501-3212	5013212	19204	PIN, MAINSPRING HOUSING	EA	1
N	B-3	3 PAFZZ	1005-00-650-1828	6501828	19204	SAFETY, GUN GRIP	EA	1
N	B-3	4 PAFZZ	1005-00-556-4058	5564058	19204	HOUSING, ASSEMBLY, MAINSPRING	EA	1
N	B-3	5 PAFZZ	5315-00-844-4790	MS16562-25	96906	PIN, SPRING: TUBULAR, SLOTTED, BOTH ENDS CHAM, S, CD-PLTD, 0.093 DIA, 0.500 LG, 0.022 STK THK	EA	1
N	B-3	6 PAFZZ	1005-00-501-3214	5013214	19204	LOOP, LANYARD U SHAPE, 0.107 STK DIA, 1/2 LG	EA	1
N	B-3	7 XA		5503841	19204	HOUSING, MAINSPRING	EA	1
N	B-3	8 PAFZZ	5315-00-501-3210	5013210	19204	PIN, STRAIGHT, HEADED FL-CK-HD, S, 0.084 SHANK DIA, 0.369 LG (MAINSPRING HOUSING)	EA	1
N	B-3	9 PAFZZ	5315-00-501-3209	5013209	19204	PIN, STRAIGHT, HEAD FL-FIL-HD, S, 0.174 SHANK DIA, 0.608 MAINSPRING CAP	EA	1
N	B-3	10 PAFZ	5360-00-501-3208	5013208	19204	SPRING, HELICAL, COMPRESSION S, 21.5 COILS, HOUSING ASSY	EA	1
N	B-3	11 PAFZ	1005-00-501-3213	5013213	19204	PLUNGER, DETENT	EA	1
N	B-3	12 PADZZ	5360-00-600-8602	6008602	19204	SPRING, SEAR	EA	1
N	B-3	13 PAFZZ	5315-00-501-3206	5013206	19204	PIN, STRAIGHT, HEADED FL-CK-HD S, 0.157 MAX SHANK DIA, 0.786 LG UNDER HD (HAMMER)	EA	1
N	B-3	14 PAFZZ	1005-00-980-1743	7790803	19204	HAMMER, FIRING, SMALL ARMS	EA	1
N	B-3	15 PAFZZ	5315-00-501-3207	5013207	19204	PIN, STRAIGHT, HEADLESS S, PHOS-FIN., 0.96 MAX DIA, 0.305 O/A LG HAMMER STRUT;	EA	1
N	B-3	16 PADZZ	1005-00-600-8600	6008600	19204	STRUT, HAMMER	EA	1
N	B-3	17 PAFZZ	5315-00-501-3211	5013211	19204	PIN, STRAIGHT, HEADED FL-CK-HD, S, 0.110 MAX SHANK DIA, 0.780 MAX LG UNDER HD (SEAR)	EA	1
N	B-3	18 PAFZZ	1005-00-592-9974	7268068	19204	SEAR	EA	1
N	B-3	19 PAFZZ	1005-00-600-8603	6008603	19204	DISCONNECTOR, RECEIVER ASSEMBLY	EA	1
N	B-3	20 PAFZZ	1005-00-600-8609	6008609	19204	CATCH, MAGAZINE	EA	1
N	B-3	21 PAFZ	1005-00-501-3218	5013218	19204	LOCK, MAGAZINE CATCH	EA	1
N	B-3	22 PAFZZ	5360-00-501-3217	5013217	19204	SPRING, HELICAL, COMPRESSION 13 COILS MAGAZINE CATCH	EA	1
N	B-3	23 PAFZZ	1005-00-614-7780	6147780	19204	TRIGGER STL, PHOS-CTD, 2.26 LOA, 0.91 W	EA	1
N	B-3	24 PAFZZ	5315-00-501-3203	5013203	19204	PIN, STRAIGHT, HEADLESS S, 0.063 MAX DIA, 39/64 O/A LG (EJECTOR)	EA	1
N	B-3	25 PAFZZ	1005-00-903-8192	11010485	19204	EJECTOR, CARTRIDGE	EA	1
N	B-3	26 PADZZ	5305-00-601-9023	6019023	19204	SCREW, MACHINE FIL-HD, S, PHOS-CTD, 0.150-5 DNS, 0.260 O/A LG GRIP;	EA	4
N	B-3	27 PADZ	1005-00-556-4063	5564063	19204	GRIP, PISTOL LH, PLASTIC, CHECKERED	EA	1
N	B-3	28 PADZZ	1005-00-556-4062	5564062	19204	GRIP, PISTOL RH, PLASTIC, CHECKERED	EA	1
N	B-3	29 PAFZ	3120-00-601-9022	6019022	19204	BUSHING, STOCK SCREW RECEIVER ASSY	EA	4
N	B-3	30 PAFZZ	1005-00-501-3195	5013195	19204	PLUNGER, SAFETY	EA	1
N	B-3	31 PADZZ	5360-00-501-3194	5013194	19204	SPRING, HELICAL, COMPRESSION 14-1/2 COILS, PLUNGER	EA	1
N	B-3	32 PAFZZ	1005-00-501-3193	5013193	19204	PLUNGER, SLIDE STOP	EA	1
N	B-3	33 PAFZZ	1005-00-600-8594	6008594	19204	TUBE PLUNGER	EA	1
N	B-3	34 XA		6535359	19204	RECEIVER	EA	1

SECTION III. SPECIAL TOOLS LIST

(1) ILLUSTRATION		(2)	(3)	(4)	(5)	(6)	(7)	(8)	
(a) FIG NO.	(b) ITEM NO.	SMR CODE	FEDERAL STOCK NUMBER	PART NUMBER	FSCM	DESCRIPTION <i>USABLE ON CODE</i>	U/M	QTY INC IN UNIT	
						GROUP 02 EQUIPMENT AUTHORIZED FOR UNIT REPLACEMENT			
N	B-4	1	PAFZZ	1095-00-592-6491	7791466	19204	HOLSTER,PISTOL HIP,M1916 (BLACK)	EA	1
N	B-4	2	PAFZZ	1095-00-973-2353	7791527	19204	HOLSTER,PISTOL SHOULDER,M7 (BLACK)	EA	1
						GROUP 03 TOOLS AND EQUIPMENT			
N			PADZ	1005-00-288-3565	5019316	19204	SWAB,SMALL ARMS CLEANING COTTON,2-1/2 SQ ;1000 IN PKG;	EA	1
N			PAFHD	4933-00-775-0366	8426358	19204	TOOL SET,DIRECT AND GENERAL SUPPORT MAINTENANCE,BASI C SMALL ARMS	EA	1



AR 910574

Figure B-4. Special equipment.

SECTION IV. NATIONAL STOCK NUMBER AND PART NUMBER INDEX

National stock no.	Fig no.	Item no.	National stock no.	Fig no.	Item no.
1005-00-288-3565	B-4	80	1005-00-556-4058	B-3	4
1005-00-501-3193	B-3	32	1005-00-556-4062	B-3	28
5360-00-501-3194	B-3	31	1005-00-556-4063	B-3	27
1005-00-501-3195	B-3	30	1095-00-592-6491	B-4	1
1005-00-501-3196	B-2	13	1005-00-592-9974	B-3	18
1005-00-501-3197	B-2	14	1005-00-600-8594	B-3	33
1005-00-501-3198	B-2	7	1005-00-600-8595	B-1	2
5315-00-501-3199	B-2	6	3120-00-600-8596	B-2	4
5360-00-501-3200	B-2	2	1005-00-600-8597	B-2	3
1005-00-501-3201	B-2	1	1005-00-600-8598	B-2	11
5315-00-501-3203	B-3	24	1005-00-600-8599	B-2	9
5360-00-501-3204	B-2	10	1005-00-600-8600	B-3	16
1005-00-501-3205	B-2	8	5360-00-600-8602	B-3	12
5315-00-501-3206	B-3	13	1005-00-600-8603	B-3	19
5315-00-501-3207	B-3	15	1005-00-600-8609	B-3	20
5360-00-501-3208	B-3	10	3120-00-601-9022	B-3	29
5315-00-501-3210	B-3	8	5305-00-601-9023	B-3	26
5315-00-501-3211	B-3	17	1005-00-614-7780	B-3	23
5315-00-501-3212	B-3	2	1005-00-650-1828	B-3	3
1005-00-501-3213	B-3	11	1005-00-722-3849	B-2	5
1005-00-501-3214	B-3	6	4933-00-775-0366		
5360-00-501-3217	B-3	22	5315-00-844-4790	B-3	5
1005-00-501-3218	B-3	21	1005-00-876-4033	B-2	12
1005-00-550-3840	B-3	1	1005-00-903-8192	B-3	25
1005-00-550-8694	B-1	1	1095-00-973-2353	B-4	2
			1005-00-980-1743	B-3	14

Part no.	FSCM	Fig no.	Item no.	Part no.	FSCM	Fig no.	Item no.
MS16562-25	96906	B-3	5	5508694	19204	B-1	1
11010485	19204	B-3	25	5564058	19204	B-3	4
5013193	19204	B-3	32	5564062	19204	B-3	28
5013194	19204	B-3	31	5564063	19204	B-3	27
5013195	19204	B-3	30	6008594	19204	B-3	33
5013196	19204	B-2	13	6008595	19204	B-1	2
5013197	19204	B-2	14	6008596	19204	B-2	4
5013198	19204	B-2	7	6008597	19204	B-2	3
5013199	19204	B-2	6	6008598	19204	B-2	11
5013200	19204	B-2	2	6008599	19204	B-2	9
5013201	19204	B-2	1	6008600	19204	B-3	16
5013203	19204	B-3	24	6008602	19204	B-3	12
5013204	19204	B-2	10	6008603	19204	B-3	19
5013205	19204	B-2	8	6008609	19204	B-3	20
5013206	19204	B-3	13	6019022	19204	B-3	29
5013207	19204	B-3	15	6019023	19204	B-3	26
5013208	19204	B-3	10	6147780	19204	B-3	23
5013209	19204	B-3	9	6501828	19204	B-3	3
5013210	19204	B-3	8	6535359	19204	B-3	34
5013211	19204	B-3	17	7265655	19204		
5013212	19204	B-3	2	7265655	19204	B-1	
5013213	19204	B-3	11	7268068	19204	B-3	18
5013214	19204	B-3	6	7790314	19204	B-2	15
5013217	19204	B-3	22	7790353	19204	B-2	12
5013218	19204	B-3	21	7790803	19204	B-3	14
5019316	19204	B-4	80	7791193	19204	B-2	5
5503840	19204	B-3	1	7791466	19204	B-4	1
5503841	19204	B-3	7	7791527	19204	B-4	2
				8426358	19204		

By Order of the Secretary of the Army:

FRED C. WEYAND
General, United States Army
Chief of Staff

Official:

PAUL T. SMITH
Major General, United States Army
The Adjutant General

DISTRIBUTION:

To be distributed in accordance with DA Form 12-40, (qty rqr block no. 117) Direct and General Support maintenance requirements for Pistol, Cal .45, Automatic M1911A1.