

TMCT-10 Barcode Scanner User Manual

IMPORTANT NOTICE

Safety Precaution

- * DO NOT disassemble the scanner, or place foreign matter into the scanner cause a short circuit or circuit damage.
- * DO NOT expose the scanner or battery to any flammable sources.

Maintenances Precaution

- * Use a clean cloth to wipe dust off the body of the scanner.
- * If you find the scanner abnormal, write down the specific scenario and consult the maintenance person.

Contents

IMPORTANT NOTICE	2
Safety Precaution	2
Maintenances Precaution	2
Contents	3
Overview of TMCT-10 Barcode Scanner	5
Features of the Scanner	5
Appearance	5
Introduction of Key Function.....	6
Specifications	6
Correct Aiming	7
Incorrect Aiming.....	7
QUICK START	8
Enter the Setting Mode	9
Exit the Setting Mode with Save	9
Exit the Setting Mode without Save	10
Restore Factory Defaults.....	10
Check Software Version	10
Save Custom Settings	11
Chapter 1 Features and Basic Setups.....	12
1.1 Battery.....	13
1.1.1 Mounting the battery (charging).....	13
1.1.2 How to operate TMCT-10 Barcode Scanner	13
1.1.3 Auto Power Off.....	14
1.2 Transmit Buffer.....	15
1.2.1 Inventory Mode.....	16
1.3 LED Indicator	17
1.4 Beeper	18
1.4.1 Beeper Volume	19
1.5 Scan Modes.....	20
1.5.1 Manual Mode	20
1.5.2 Continuous Mode.....	21
1.5.3 Auto Power Off Mode	22
1.5.4 Auto-induction Mode.....	24
1.6 Symbolologies Supported	25
1.7 USB Wired Data Transmission.....	25
Chapter 2 How to Connect with BT	26
2.1. Select Output Interface	27
2.1.1 BT SPP Mode	27
2.1.2 BT HID Mode.....	27
2.2 Setting up a BT connection.....	28

2.3 Connect to PC via BT	29
2.4 Connect to PDA via BT	35
2.4.1 One-click Android Connection	39
2.4.2 One-click iOS Connection	42
2.4.3 Connect via BT Input Method	45
Chapter 3 SYMBOLOGY SETTINGS	54
3.1 CODABAR	55
3.2 CODE 25 –INDUSTRIAL25	56
3.3 CODE 25 –INTERLEAVED 25	57
3.4 CODE 25 –MATRIX 25	58
3.5 CODE 25-STANDARD 25	59
3.6 CODE 39	60
3.6.1 Enable/Disable Code 39	60
3.6.2 START/STOP Transmission	60
3.6.3 Checksum Verification	61
3.6.4 STANDARD/FULL ASCII CODE 39	62
3.7 CODE 93	62
3.7 CODE 93	63
3.8 Code 128	64
3.9 EAN-8	66
3.9.1 Enable/Disable EAN-8	66
3.9.2 Convert to EAN-13	66
3.9.3 Checksum Transmission	67
3.10 EAN-13	68
3.10.1 Enable/Disable EAN-13	68
3.10.2 Convert to ISBN	68
3.10.3 Checksum Transmission	69
3.11 UPC-A	70
3.11.1 UPC-A Output ‘0’	70
3.11.2 UPC-A Checksum Transmission	70
3.12 UPC-E	71
3.12.1 Enable/Disable UPC-E	71
3.12.2 UPC-E Checksum Transmission	71
3.13 MSI	72
3.14 CODE 11	73
Chapter 4 DEFINING OUTPUT FORMAT	75
4.1 CODE ID	76
4.2 Suffix Code of Barcode Settings	77
APPENDIX I	78

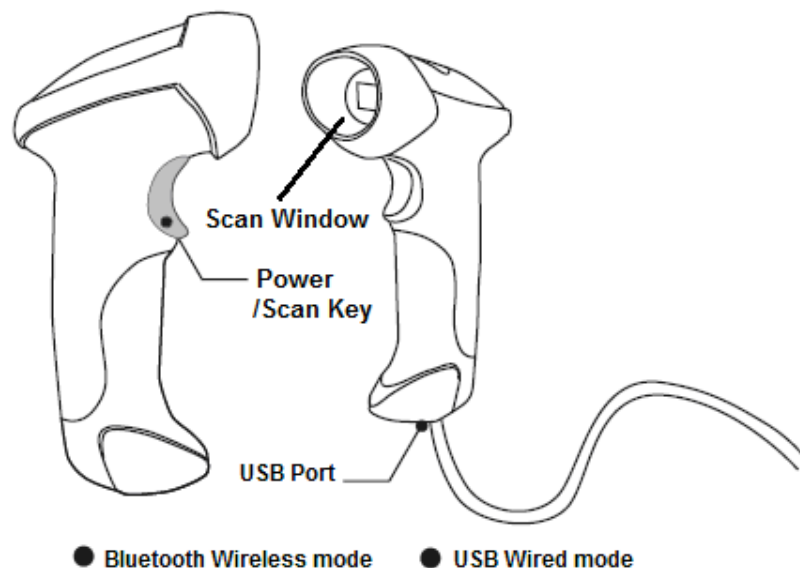
Overview of TMCT-10 Barcode Scanner

Features of the Scanner

- * Small size, portable.
- * Supports three scan modes, including Continuous Mode, Manual Mode, Auto-off Mode.
- * Supports most popular barcode symbologies.
- * User feedback via LED indicator and beeper
- * The voice volume of scan barcode successfully could change via setting barcode.
- * Built-in 256 KB Flash memory can store up to thousand scan barcodes.
- * Provides 2 KB memory for reserve buffer while Bluetooth connection interrupt, can store up to 110 scan barcodes.
- * Supports BT SPP.
- * Supports BT HID.
- * Programmable parameters include data output format, editing format, symbologies, etc.

- ★ Abundant decoding symbologies
- ★ Whole body shockproof and drop resistance design
- ★ Proprietary intellectual property rights
- ★ Comfortable operating feel
- ★ Button life up to 3 million times
- ★ Support BT standard protocol, no need adaptor
- ★ 1000mAh large capacity lithium battery
- ★ Long working hours

Appearance



Introduction of Key Function



Note: Long press Scan button 3 seconds will turn on the TMCT-10 scanner.
Long press Scan button 3 seconds will turn off the TMCT-10 scanner.
Flip the Scan button can read the barcodes.

Specifications

PHYSICAL CHARACTERISTICS	
Material	ABS+TPU
Size	Length 167mm*Width 70mm* Height 85.5mm
Color	White, Black
Power supply	Built-in rechargeable lithium battery
Weight	150g (With battery)
PERFORMANCE CHARACTRISTICS	
Bluetooth	Bluetooth class 2.0, Version +EDR
Interfaces Supported	Multiple Interface with: USB, RS232, PS2 Keyboard
Interfaces Supported	SPP, HID
Light Source (Laser)	Laser LED 650+/-20nm
Sensor	2500 pixels
Decode Capability	Codabar, Code 11, Code 93, MSI, Code 128, UCC/EAN-128, Code 39, EAN-8, EAN-13, UPC-A, ISBN, Industrial 25,

	Interleaved 25, Standard 25, 2/5 Matrix
Resolution	3mil
Nominal Working Distance	6~30cm
Decode Rate	200 decodes per second
Scan width	30mm=Scanner Window
Decode mode	Single-Line Aiming
Scan mode	Auto off mode / Manual mode
Print Contrast Minimum	30%
Scan angles	Roll 30° Pitch 75° Yaw65°
Cylinder Horizontal Scan	Diameter 35mm
Indication	Beeper, LED
Radio Range	10m Visual range
POWER	
Voltage	DC 5V
Laser Safety	Accord with national level two laser safety standards
EMC	CE & FCC DOC Compliance
standby Current	35mA
Operating current	60mA
USER ENVIRONMENT	
Operating Temp.	0 to 50 °C / 32 to 122°F
Storage Temp.	0 to 50 °C / 32 to 122°F
Operating Humidity	20-85% (non-condensing)
Storage Humidity	20-85% (non-condensing)
Drop Specifications	Free fall of 1.5m air drop
Accessories	Lithium battery, Charger., Data lines

Correct Aiming



Incorrect Aiming



QUICK START

The setting of the TMCT-10 Barcode Scanner can be changed by reading the setup barcodes contained in this manual. This section describes the procedure of setting the TMCT-10 Barcode Scanner by reading the setup barcodes and provides some example for demonstration.

Steps	Action	Feedback if Successful
1	Turn on TMCT-10 Barcode Scanner...	It will response with a long beep (high tone) , it's LED shows red and with Intmt twinkle.

Note: How the TMCT-10 Barcode Scanner establishes a connection with computer or other compatible device, please refer to Chapter 2.

2	Enter the Setting Mode...	The TMCT-10 Barcode Scanner will response three beeps (tone descending from high to low), and its LED indicator will flashing purple.
---	---------------------------	---



Enter Setup

3	Read a Setup barcode	The TMCT-10 Barcode Scanner will response three beeps (tone ascending from low to high), and its LED indicator will flashing purple.
---	----------------------	--

For Example:



Enable Codabar

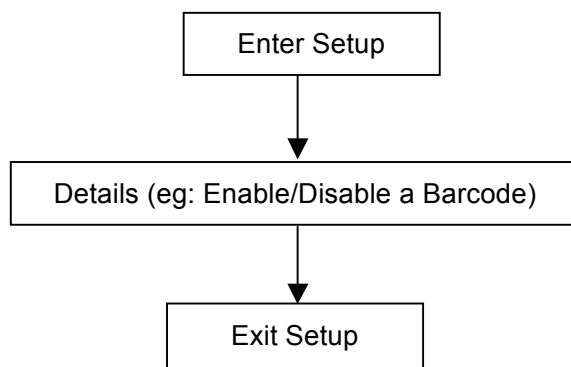
4	Exit the Setting Mode...	The TMCT-10 Barcode Scanner will response three beeps (tone descending from high to low), and its LED indicator will not flashing purple and power off.
---	--------------------------	---



Exit with Save

Note: When any setup error occurs, the TMCT-10 Barcode Scanner will respond with a long beep (low tone), and its LED indicator will flashing purple.

Steps of Setup:



Enter the Setting Mode

For the scanner to enter the setting mode, you must have it read the "Enter Setup" barcode, which will be located at the bottom of almost every page of this manual.

The TMCT-10 Barcode Scanner will respond with three beeps (tone descending from high to low), and its LED indicator becomes purple and go off quickly after reading the barcode.



Enter Setup

For setting scanner parameters, see "Read a Setup Barcode" below.

Exit the Setting Mode with Save

For the scanner to exit the setting mode, you must have it read the "Exit with Save" barcode, which will be located at the bottom of almost every page of this manual.

Just like reading the "Enter Setup" barcode, the scanner will respond with three beeps (tone ascending from low to high) after reading the barcode.



Exit with Save

Exit the Setting Mode without Save

If you want to exit the setting mode without saving any changes, you must have the scanner read the "Exit without Save" barcode.

Just like reading the "Enter Setup" barcode, the scanner will respond with three beeps (tone ascending from low to high) after reading the barcode.



Exit without Save

Restore Factory Defaults

"Restore Factory Defaults" is a special barcode. The TMCT-10 Barcode Scanner will respond with a short beep (high tone) after reading this barcode. At this time, the scanner system could restore factory defaults, and no need to read "Exit with Save" barcode again. The Scanner defaults enable HID, PIN defaults 10010.



Restore Factory

Note: Most of setting mode have restore factory defaults selection. The factory default value for each setting is indicated by an asterisk "**".

You could use this barcode at the following status:

- 1、 The scanner can not work. For example, it can not read barcodes.
- 2、 You forget the settings you did to the scanner before, and you don't want to be affected by the settings when you use the scanner.
- 3、 After using a function which is not be used usually in the scanner.

Check Software Version

If you want to know the software version of TMCT-10, should read the 'Enter Setup' and 'Output Software Version' barcode:



Enter Setup



Output Software Version

Checking the software version is done at the enter setup mode, so after output the software version, need to read 'Exit without Save' barcode.



Exit without Save

Save Custom Settings

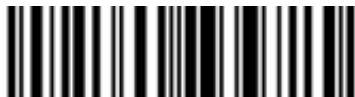
1. You may change factory defaults, and customize some functions suitable for your own applications when you use TMCT-10, you must read the 'Enter Setup – Function barcode you want to customize – Save Custom Settings – Exit with Save' barcodes.



Enter Setup



Save Custom Settings



Restore Customs Settings



Exit with Save

2. If you want to restore to custom settings after resetting the barcode scanner, just need to read 'Enter Setup – Restore Custom Settings – Exit with Save' barcodes as above.

Chapter 1 Features and Basic Setups

This chapter will introduce the features and usage of the barcode scanner.

Contents

1.1 Battery.....	13
1.1.1 Mounting the battery (charging)	13
1.1.2 How to operate TMCT-10 Barcode Scanner	13
1.1.3 Auto Power Off.....	14
1.2 Transmit Buffer.....	15
1.3 LED Indicator	17
1.4 Beeper	18
1.4.1 Beeper Volume	19
1.5 Scan Modes.....	20
1.5.1 Manual Mode	20
1.5.2 Continuous Mode.....	21
1.5.3 Auto Power Off Mode	22
1.5.4 Auto-induction Mode.....	24
1.6 Symbologies Supported	25
1.7 USB Wired Data Transmission.....	25

1.1 Battery

The scanner is powered by 1500mAh chargeable Lithium batteries. The batteries can support the scanner work continuous for 60 hours, or read 56000 barcodes (read an EAN-13 barcode per 5s).

1.1.1 Mounting the battery (charging)

- 1) Hold the scanner face down in one hand.
- 2) Insert USB cable for charging.

1.1.2 How to operate TMCT-10 Barcode Scanner



Turn on the scanner

Press the Power key for about 2 seconds. The scanner will respond with a long beep (high tone), and its LED indicator is flashing.

Turn off the scanner

Press the Power key for about 3 seconds. The scanner will respond with two short beeps (high tone) and the LED indicator is turn off.

1.1.3 Auto Power Off

In order to conserve battery power, the user can specify the time interval for the scanner to automatically turn off. By default, it is set to 10 minutes.



Enter Auto Power Off



5min



(*) 10min



20min



30min



Exit Auto Power Off

For example: Set 20 minutes for the scanner to automatically turn off.

1. Read the "Enter Setup" barcode;
2. Read the "Enter Auto Power Off" barcode;
3. Read the "20min" barcode;
4. Read the "Exit with Save" barcode.

Note: If you want to keep the scanner power on all the time, read "Exit Auto Power Off" in stead of step 3 and 4.



Enter Setup



Exit with Save



Exit without Save

1.2 Transmit Buffer

During the Bluetooth connection, the TMCT-10 Scanner uses a 16KB memory as a data buffer, and sends the collected data to the host computer one by one via the Bluetooth. Upon reading a barcode successfully, the scanner responds with one short beep and its LED indicator becomes green and goes off quickly. However, the host computer may not receive the data immediately if getting out of range. With the 16KB transmit buffer, the scanner can ignore the transmission status and keep on reading barcodes until the buffer is full. When the buffer is full, the scanner will respond with a long beep (low tone), this reminds the user that the space of buffer is not enough and can not read barcode any more. @ Once the Buffer is full, the user should return to the range of BT connection quickly, the data in the buffer can be sent back to the host computer and release the space of buffer.

Note: The 16KB transmit buffer on the scanner can hold as many as 1300 barcodes bases on Code128. You can choose to clear the data in the buffer every time when you turn on the scanner.



Enable Clear Data in Buffer When
Turn On the Scanner



*Disable Clear Data in Buffer When
Turn On the Scanner

Note: You can clear the data in the buffer via enable barcode, you can also clear the data in the buffer via press the Power key long time.

After the Bluetooth connect successfully, the barcodes in the buffer will upload to appointed position automatically. You also can setup upload the barcodes in the buffer or not via read the following barcodes. By default, it is enabled.

If you don't want to upload the barcodes automatically, you can setup as disabled, when the Bluetooth connect, the barcodes won't upload. You can double click Power key to start upload the barcodes.



(*) Enable Auto Uploading



Disable Auto Uploading



Enter Setup



Exit with Save



Exit without Save

1.2.1 Inventory Mode

If you want to keep the barcodes in the buffer of TMCT-10 for multiple uploading, you can choose inventory mode. In inventory mode, TMCT-10 will count the number of the barcodes automatically, and control the time, position etc. for uploading. Also, you can clear the barcodes in the buffer after uploading. Following is the setup method:

- 1) Read 'Enter Inventory Mode' barcode to enter into the inventory mode



Enter Inventory Mode

- 2) If you want to recover to normal mode, read the 'Enter Normal Mode' barcode



Enter Normal Mode

- 3) Read the 'Clear the barcodes in the buffer' barcode to clear the barcodes (only suitable for inventory mode)



Clear the barcodes in the buffer

- 4) Read 'Data Uploading' barcode to upload the barcodes in the buffer (only suitable for inventory mode)



Data Uploading

- 5) Read 'Upload Counting' barcode to count the number of the barcodes (only suitable for inventory mode)



Upload Counting

Note: Inventory function can be used under any scan mode mentioned in 1.5.

1.3 LED Indicator

The LED indicators on TMCT-10 can help the user know about the current operation status.

Color of LED Indicator	Meaning
Green LED on and off quickly	Good Read, with one short beep (high tone)
Green LED on Every 5s	Indicates the TMCT-10 Scanner in Memory Mode
Purple, Flashing(On/Off ratio 1:1)	Indicates the TMCT-10 Scanner in Setting mode
Blue, Flashing (On/Off ratio 1:1)	Indicates the BT is waiting for connection, the TMCT-10 stores the address of BT which connects with the last time. Indicates the TMCT-10 Scanner is out of range or can not establish connection with BT, with two short beeps(high-low tone)
Blue, Flashing (On/Off ratio 20ms:3s)	Indicates the TMCT-10 Scanner establish a BT connection successfully, with two short beeps (low-high tone). Indicates the TMCT-10 Scanner reconnect with BT, with two short beeps (low-high tone).
Red, Flashing (On/Off ratio 1:1)	Indicates the TMCT-10 Scanner has no address of BT which connects with before. The default BT connect interface is HID, the PIN code is 10010.

1.4 Beeper

The beeper built in TMCT-10 can help the user know about the current operation status.

Beeping	Meaning
One long beep, high tone	Power on. If the scanner has no BT address which could connect with, flashing red. If the scanner has BT address which could connect with, flashing blue.
One short beep, high tone	Read barcode, with green LED on and off quickly
One long beep, low tone	Configuration error, with purple flashing; Or transmit buffer full, with green LED on and off quickly
Two short beeps, high tone	Power off.
Two short beeps, low-high tone	BT connection established, with blue LED flashing (On/Off ratio 20ms:3s).
Two short beeps, high-low tone	BT connection out of range or suspended, with blue LED flashing (On/Off ratio 1:1).
Three short beeps, tone descending from high to low	Enter or Exit Setting mode, with purple LED flashing.
Three short beeps, tone ascending from low to high	Configuration correct, with purple LED flashing;

1.4.1 Beeper Volume



Mute



Minimum Volume



(*) Medium Volume



Maximum Volume

For example: Set Minimum Volume for beeper.

1. Read the "Enter Setup" barcode;
2. Read the "Minimum Volume" barcode;
3. Read the "Exit with Save" barcode.



Enter Setup



Exit with Save



Exit without Save

1.5 Scan Modes

Four kinds of scan modes are supported by the TMCT-10 Barcode Scanner:

1.5.1 Manual Mode

By default, the scan mode is set to Manual Mode. If the user keeps press the Scan Key, the TMCT-10 Scanner will emit a red light line. This indicates the scanner could scan, the scanning will not stop until the scanner under the following situation.

- * Read a barcode successfully;
- * Release the Scan Key.



Manual Mode



Enter Setup



Exit with Save



Exit without Save

1.5.2 Continuous Mode

When you activate the “Continuous Mode”, you don’t need to trigger the “Scan Key”. After a successful decoding, the removal of barcode is required. It is not allowed to proceed to decode until the decoding delay time has passed. To decode the same barcode repeatedly, move away the barcode and put it back again and again for scanning.



Continuous Mode

Set the time interval between each decoding for Continuous Mode.



Setup Delay between Re-read



Enter Setup



Exit with Save



Exit without Save

1.5.3 Auto Power Off Mode



(*)Auto Power Off Mode



Setup Auto Power Off Time



Enter Setup



Exit with Save



Exit without Save

Delay Between Re-Read

The delay time between re-read of above scan modes could be set by the following barcode.



400ms



800ms



1s



(*) 2s



3s



5s



10s



15s

- For Example:
1. Read the "Enter Setup" barcode;
 2. Read the "Auto Power off Mode" barcode;
 3. Read the "1s" of the time interval between each scanning barcode;
 4. Read the "Exit with Save" barcode.

Then enter the Auto Power Off Mode.



Enter Setup



Exit with Save



Exit without Save

1.5.4 Auto-induction Mode

Under the Auto-induction Mode, the users just need to move the barcodes to be scanned in front of the light band of TMCT-10, no need press the Scan Key, there will show a red light line. This indicates the scanner could scan, the scanning will not stop until the scanner under the following situation.

- * Read a barcode successfully;
- *The pre-set timeout expires (the default time is 2s).



Autosensing feature

You also can setup the best auto-induction distance according to actual demand, read the following barcode for setup.



Setup Auto-induction Distance

- For Example:
1. Read the "Enter Setup" barcode;
 2. Read the "Auto-induction Mode" barcode;
 3. Read the "Setup Auto-induction Distance";
 4. Read the numeric barcode in Appendix I; (0 means farthest, 9 means nearest)
 4. Read the "Exit with Save" barcode.

Then enter the Auto-induction Mode.



Enter Setup



Exit with Save



Exit without Save

1.6 Symbologies Supported

Most of the popular barcode symbologies are supported by the TMCT-10 Scanner, as listed below. Refer to Chapter 4 for details of each symbology.

Symbologies Supported: Enable/Disable		Pre-Set
Codabar		Disable
Code 11		Disable
Code 93		Disable
MSI		Disable
Code 128		Enable
UCC/EAN-128		Enable
Code 39		Enable
EAN/UPC	EAN-8	Disable
	EAN-13	Enable
	UPC-A	Enable
	UPC-E	Enable
	ISBN	Disable
Code 2 of 5	Industrial 25	Disable
	Interleaved 25	Disable
	Standard 25	Disable
	2/5 Matrix	Disable

1.7 USB Wired Data Transmission

TMCT-10 Barcode Scanner support USB Data live transmission. The user just need connect one end of the USB cable to a device with USB2.0 port, and the other end to TMCT-10, open a textbox, it will enter data transmission. USB wired transmission is the prior transmission mode.

Chapter 2 How to Connect with BT

- 1、 Make TMCT-10 full charged, press Power key. If the scanner never connected with the computer before, it will responds with a beep, and flashing red.
- 2、 Have the scanner read the "Enter Setup" barcode to enter the setting mode.
- 3、 Have the scanner read the associated barcode to activate the BT connection interface.
- 4、 Have the scanner read the barcodes for related settings.
- 5、 Have the scanner read the barcode to exit the setting mode.
- 6、 The TMCT-10 Scanner will stay active for 1 minute waiting for a connection request from the host(SPP) or trying to connect to the host(HID).

Contents

2.1.Select Output Interface	27
2.1.1 BT SPP Mode	27
2.1.2 BT HID Mode	27
2.2 Setting up a BT connection.....	28
2.3 Connect to PC via BT	29
2.4 Connect to PDA via BT	35
2.4.1 One-click Android connection.....	39
2.4.2 One-click iOS connection	42
2.4.3 Connect via BT Input Method	45

2.1. Select Output Interface

Either SPP or HID can be chosen depending on the need.

2.1.1 BT SPP Mode

If you select the output interface of BT SPP, you may run HyperTerminal.exe or serial port tool to collect the scanned data.



Enable SPP

You can setup SPP data batch upload or single upload according to your requirements.



SPP Data Batch Upload



SPP Data Single Upload

2.1.2 BT HID Mode

By default, BT HID is activated on the TMCT-10 Scanner, and the keyboard type is set to PCAT (US).



(*) Enable HID



Enter Setup



Exit with Save



Exit without Save

2.2 Setting up a BT connection

Specify the PIN Code, if you choose "The Default Value 1", the passkey for setting up a BT connection is 10010; If you choose "The Default Value 2", the passkey for setting up a BT connection is 40510.

For security concerns, the user can also specify a unique PIN code.

1. Read the "Enter PIN Code" barcode;
2. Read the setting barcodes of parameters' value in APPENDIX ONE, if the scanner read the setting barcodes 1、5、1、5、1、5 in order, it means the PIN code is 151515.

10010



(*) Default Value 1

40510



Default Value 2



Enter PIN Code



Random PIN Code

Refer to APPENDIX I.

Note: Before the TMCT-10 Scanner connects with the other devices, the user should pre-set the scanner.

For example: The TMCT-10 Scanner is trying to connect with a host computer, the setting operation is according to the following steps:

1. Read the "Enter Setup" barcode;
2. Read the "Enable SPP" barcode;
3. Read the "Default Value 1"(PIN code is 10010);
4. Read the "Exit with Save" barcode.



Enter Setup



Exit with Save

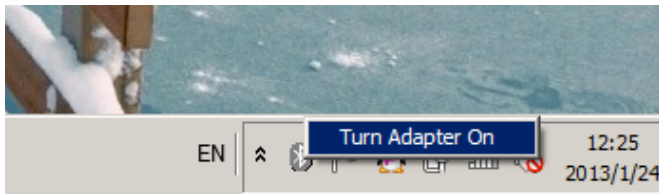


Exit without Save

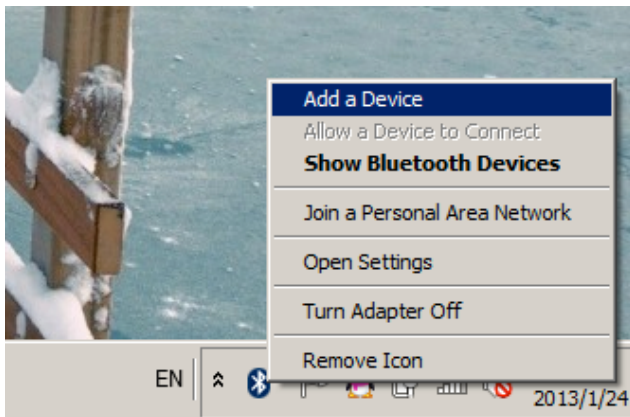
2.3 Connect to PC via BT

Steps: Turn on Bluetooth of your computer (take Win7 as example)

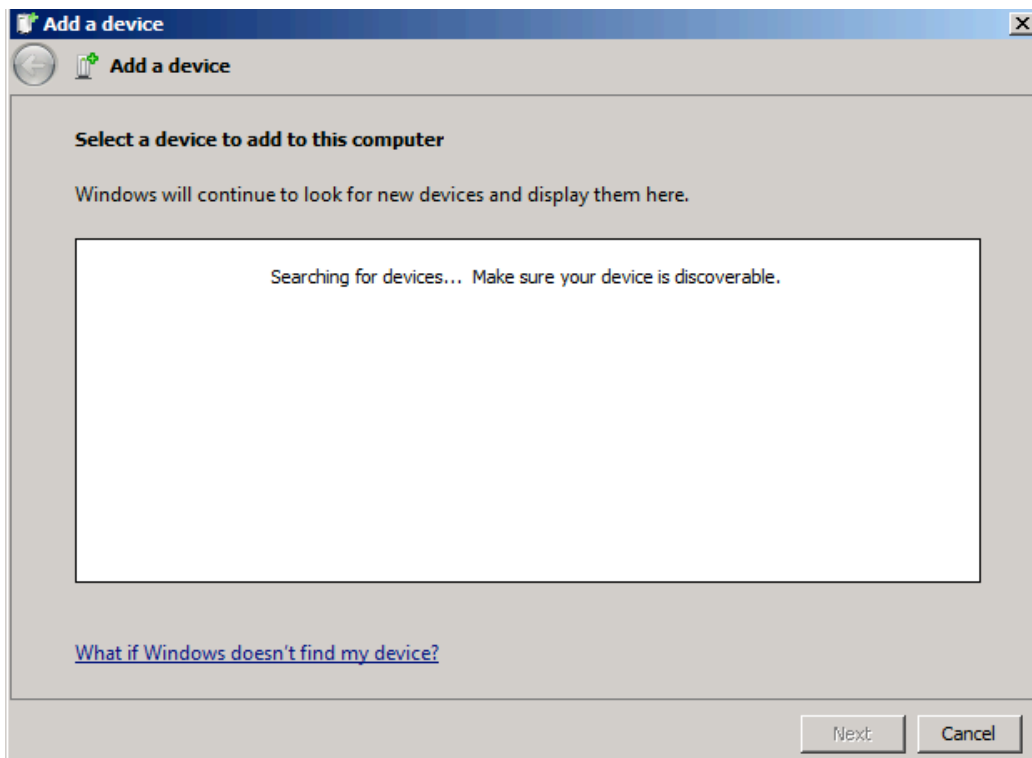
(Note: If your computer without Bluetooth, you should prepare a Bluetooth Adapter, Insert the adapter to USB port)



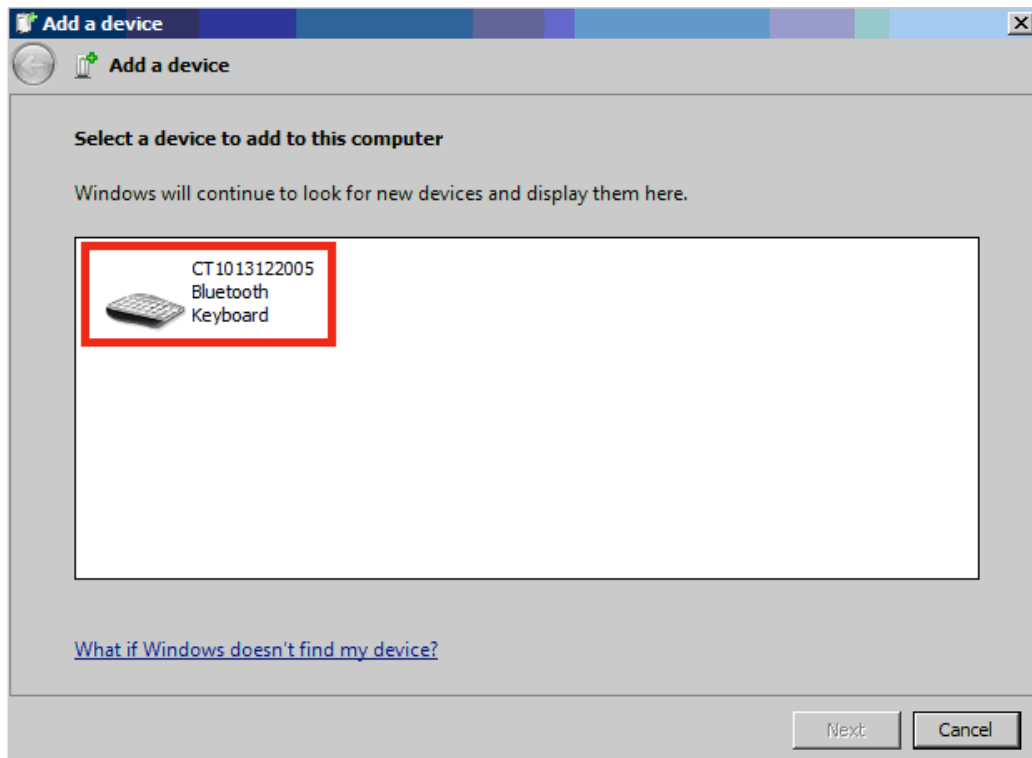
➤ Click 'Add a Device',



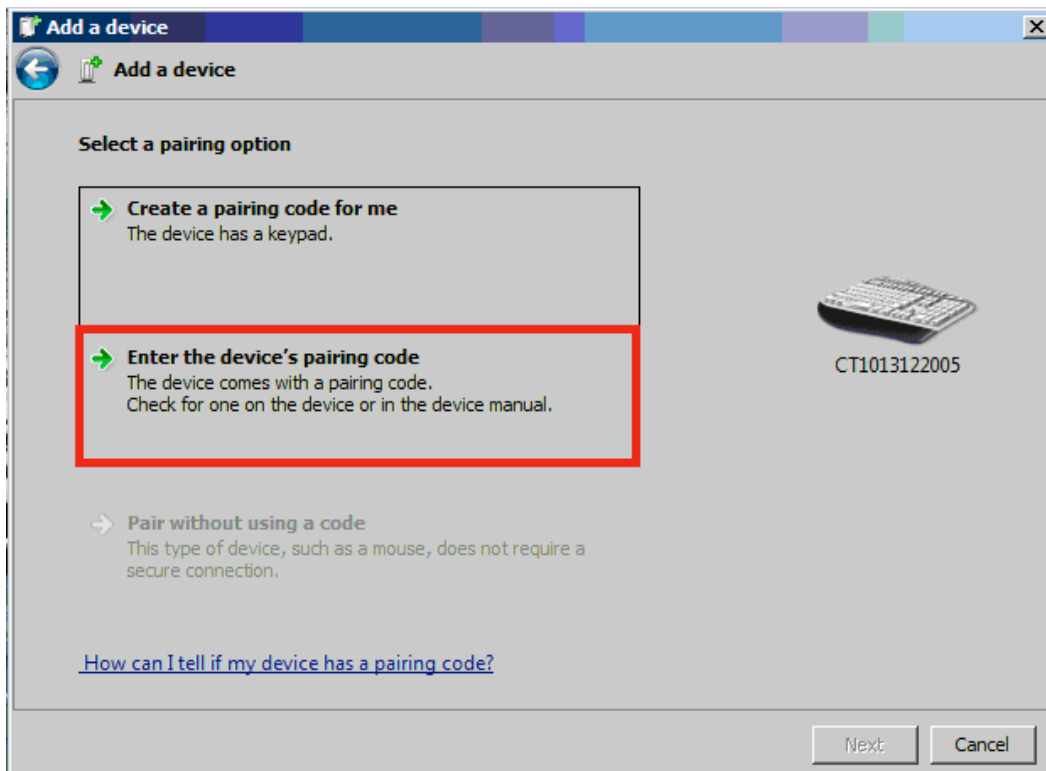
It will search for the devices, show the following window:



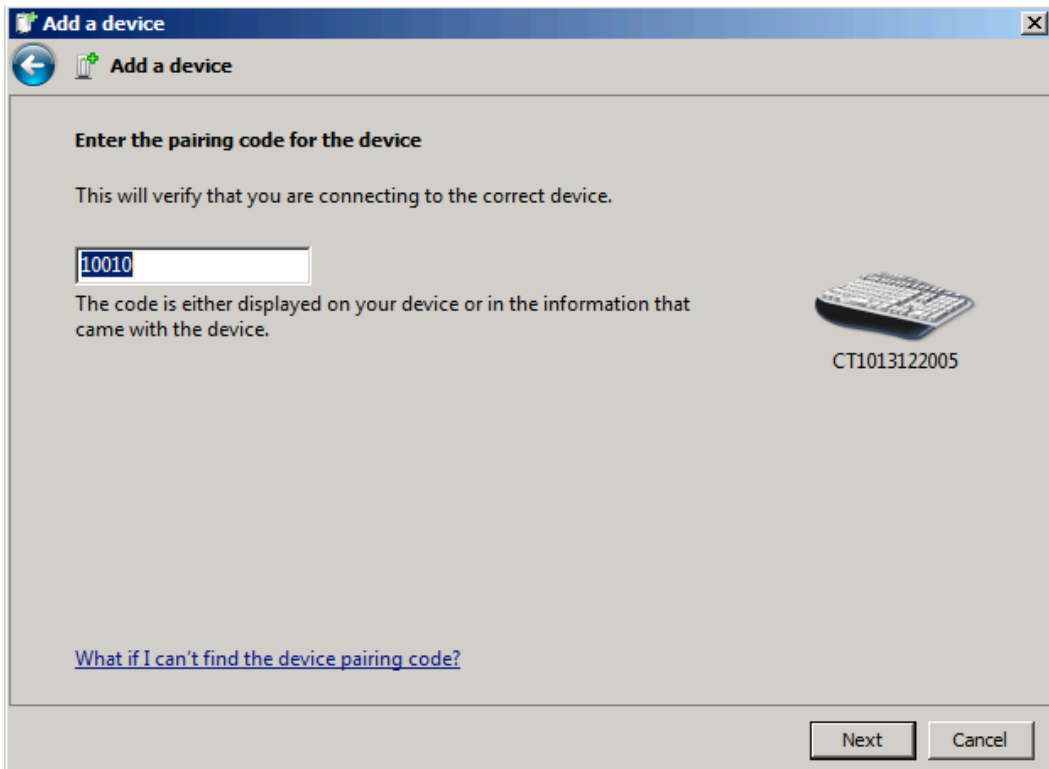
- The computer will search Bluetooth devices automatically. A few seconds later, you will find TMCT-10 in the available devices list, click 'Next'



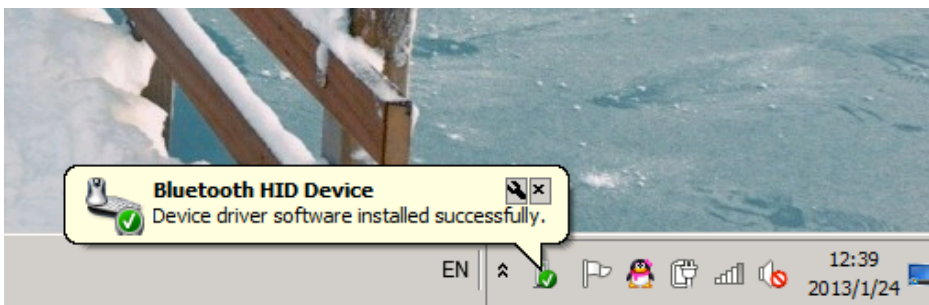
- Select 'Enter the device's pairing code', and click 'Next'.



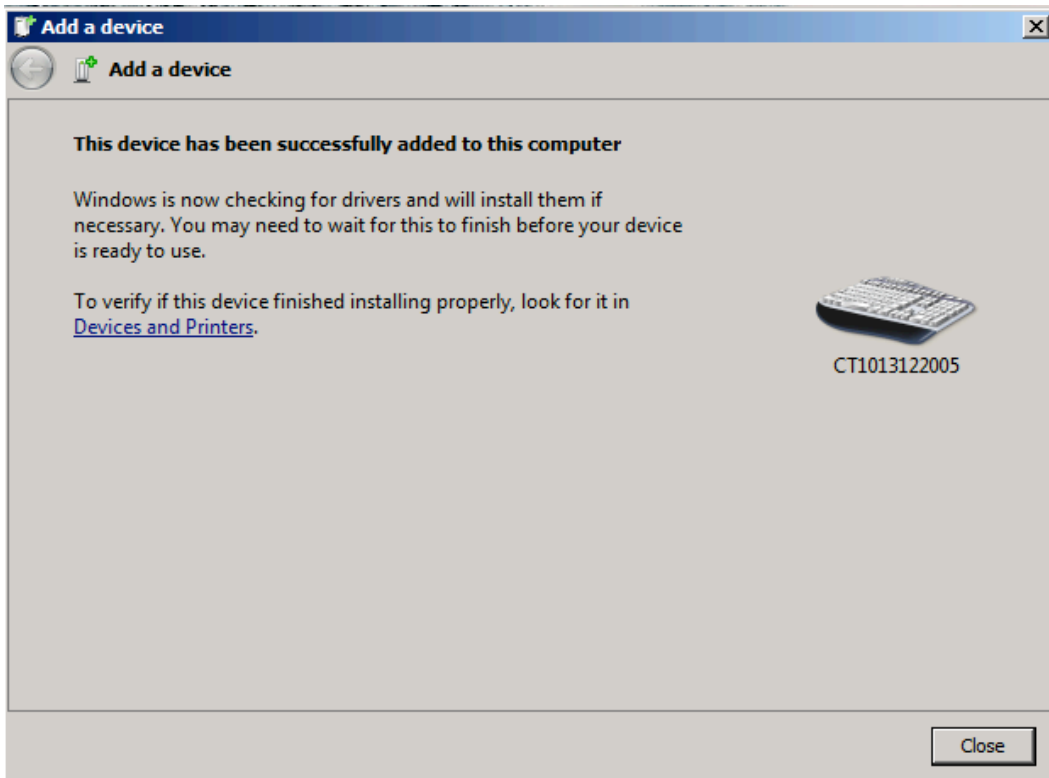
- Input the pairing code 10010, and click 'Next'



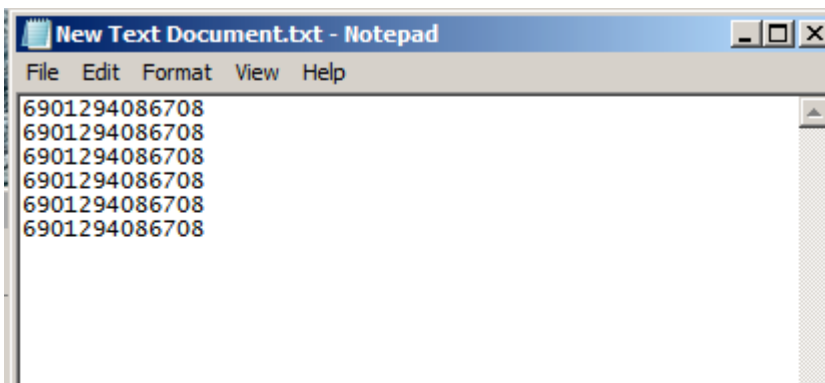
- You can find a prompting at the lower right corner of your computer desktop, as following.



After around 5 seconds, you will hear a beep from TMCT-10, and the indicator from red to blue. Then connect successfully.

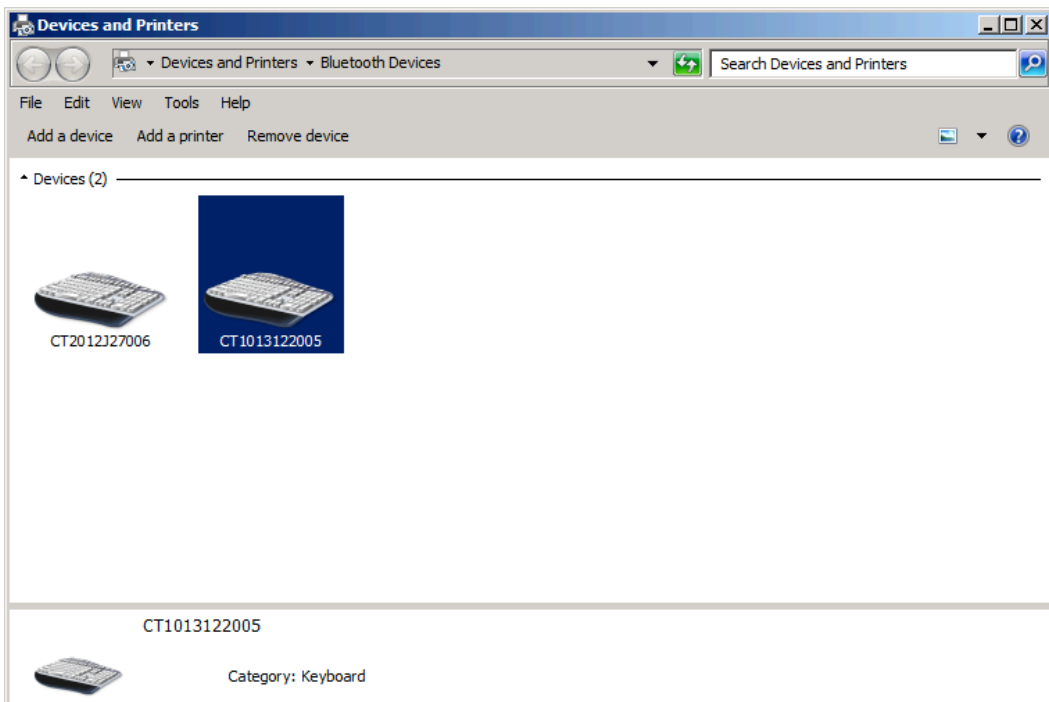
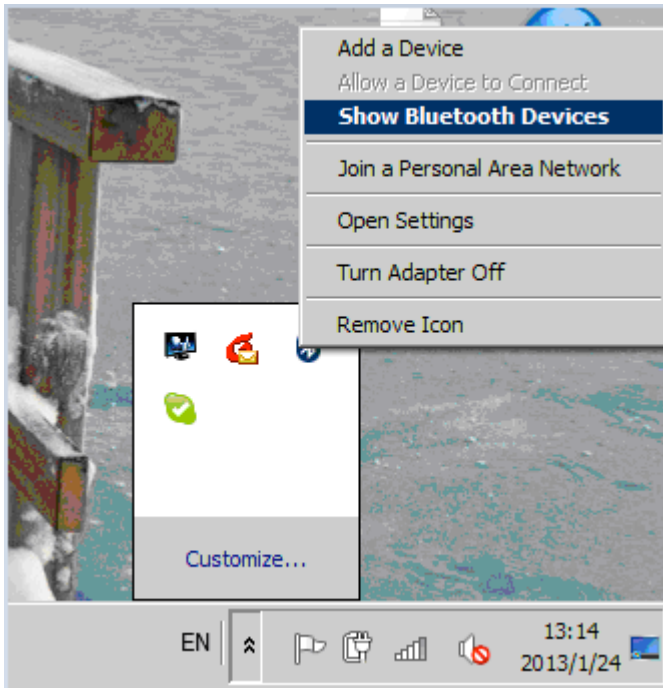


You can open a editable textbox (Notepad, word etc.), and read the barcodes.

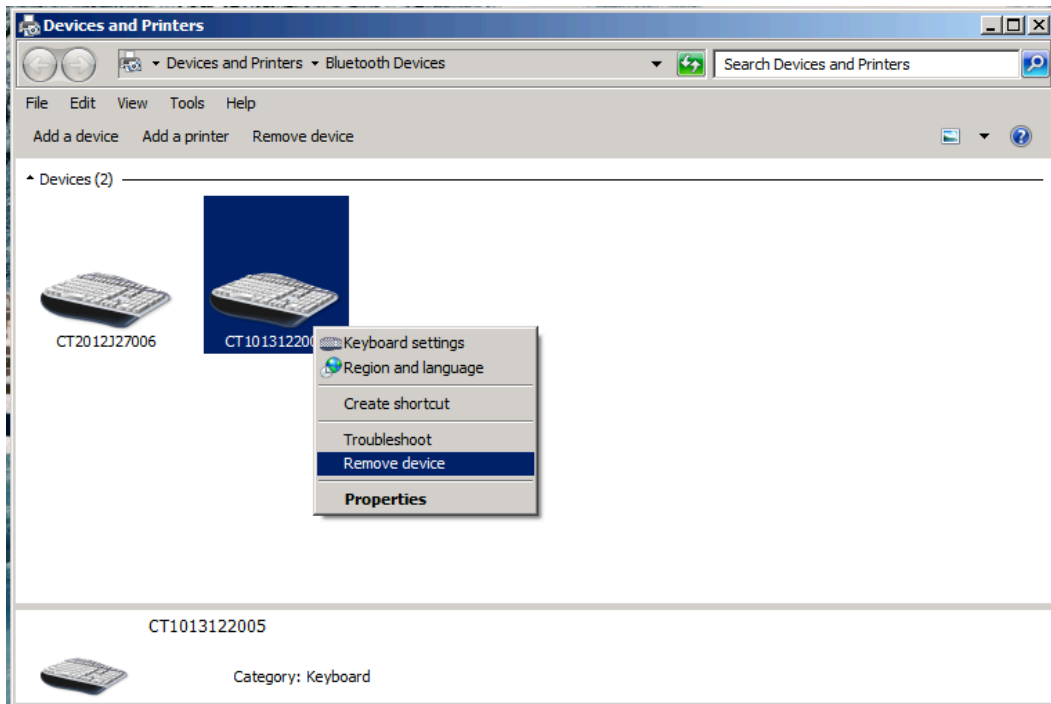


(**Note:** After pairing successfully, open Bluetooth Chat, then you can read the barcodes in SPP mode.)

- Now, you click 'Show Bluetooth Devices', you can find the TMCT-10 in Devices and Printers.



If you want to change PIN code or switch output interface, you must remove the paired TMCT-10 on the computer first.



Note: TMCT-10 default mode is HID Mode, if you want to use SPP mode, just read following barcodes before pairing, other operations is same as HID mode.

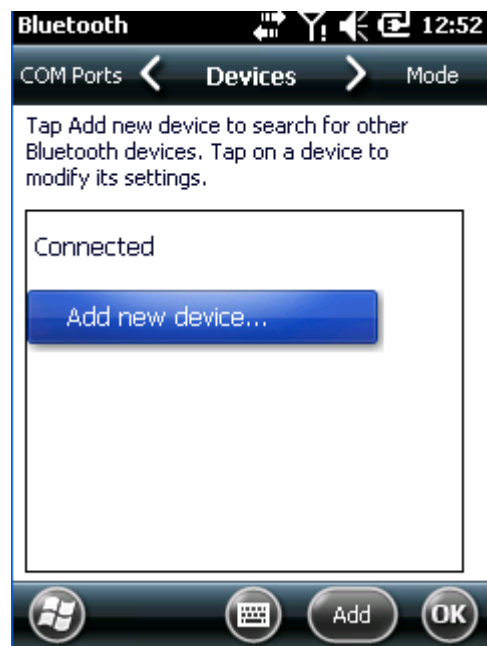
2.4 Connect to PDA via BT

PDA is trying to connect to the TMCT-10 Scanner (BT SPP).

1. Press the Power key and turn on the TMCT-10 Scanner with correct BT settings, such as setting up SPP as BT transmit interface, and BT PIN code specified, etc.
2. Find the BT icon on PDA, and double-click.



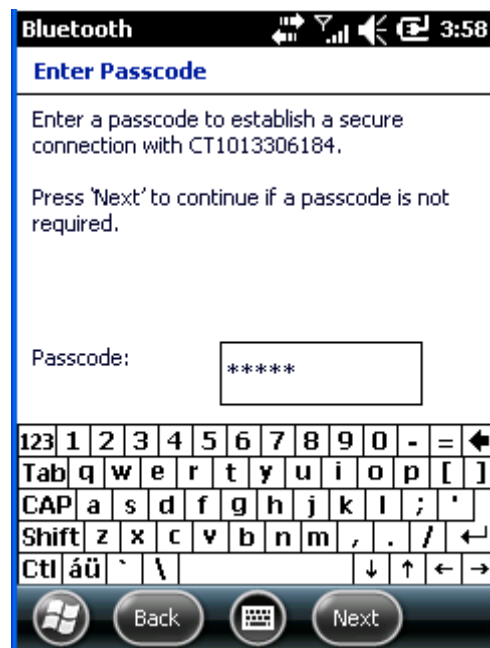
3. Click [Add New Device].



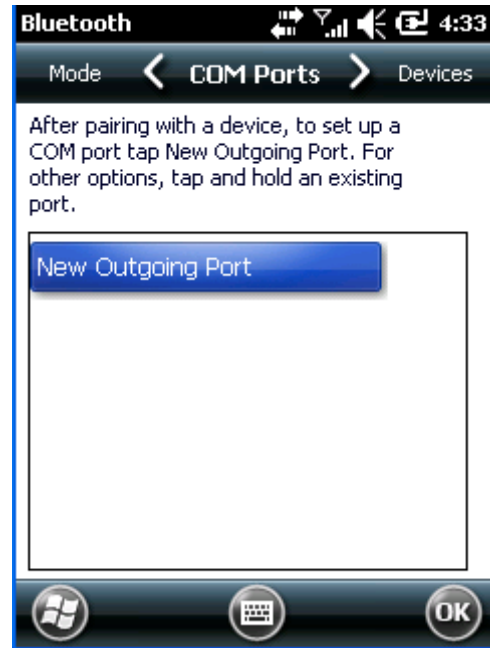
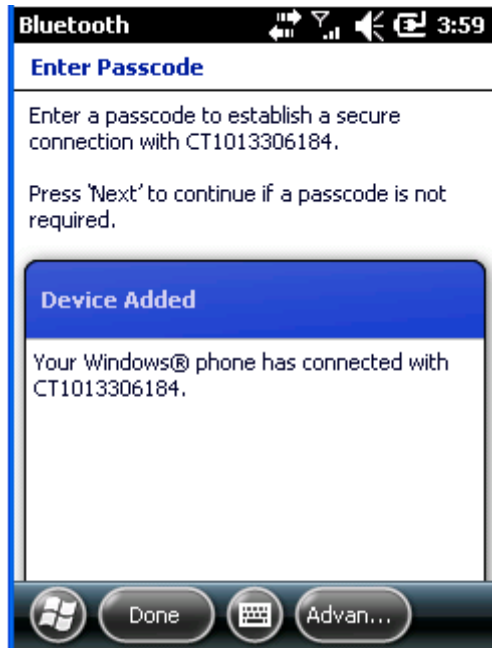
4. Choose "TMCT-10", click [Next].



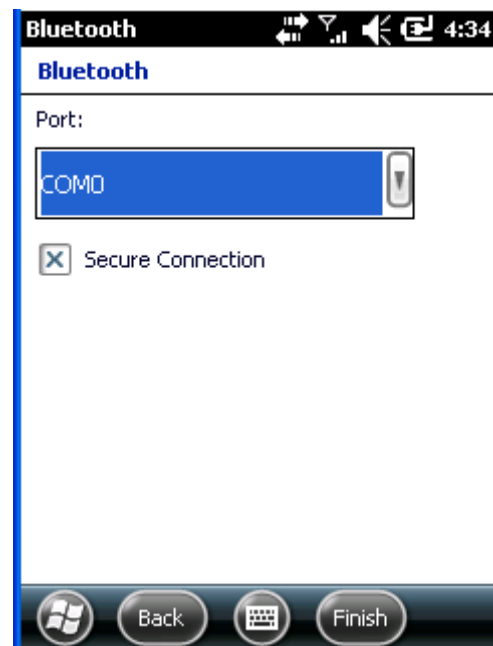
5. Enter the PIN Code. When setting up a BT connection, if you choose "The Default Value 1", input 10010; if you choose "The Default Value 2", input 40510; if you specified a unique PIN code on your own, input it. Click [Next].

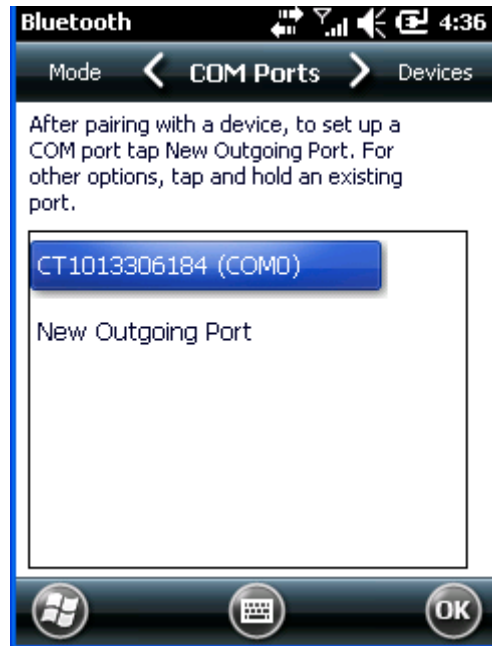


6. Click [Finish]. Click [New Transmit Port] in [COM port].

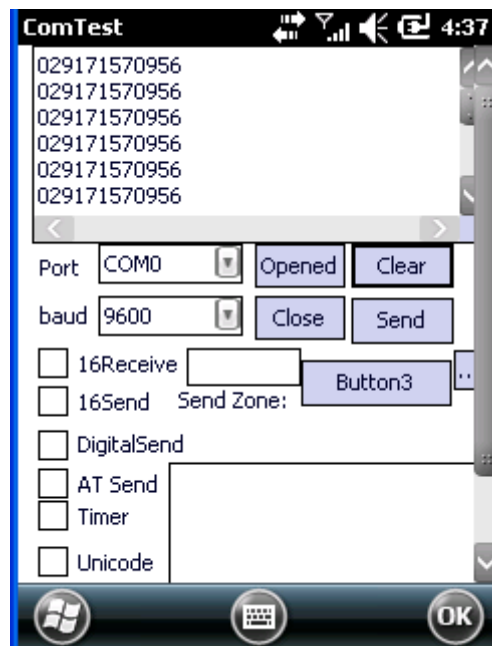


7. Choose port number for added device. [COM0] is chosen here. Click [OK].





8. Enter serial port application, choose the port number you just set, click [open]. The TMCT-10 Scanner respond with two short beeps, and the indicator is flashing blue (On/Off ratio 20ms:3s), indicating the connection between PDA and TMCT-10 is established successfully.



2.4.1 One-click Android Connection

1. Turn on TMCT-10, read the following barcodes continuously



Enter Setup



One-click android connection



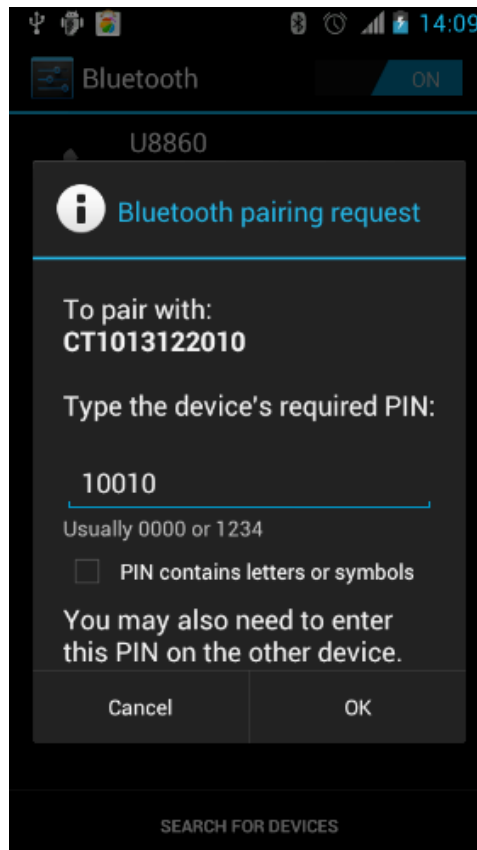
Exit with Save

2. Bluetooth Pairing

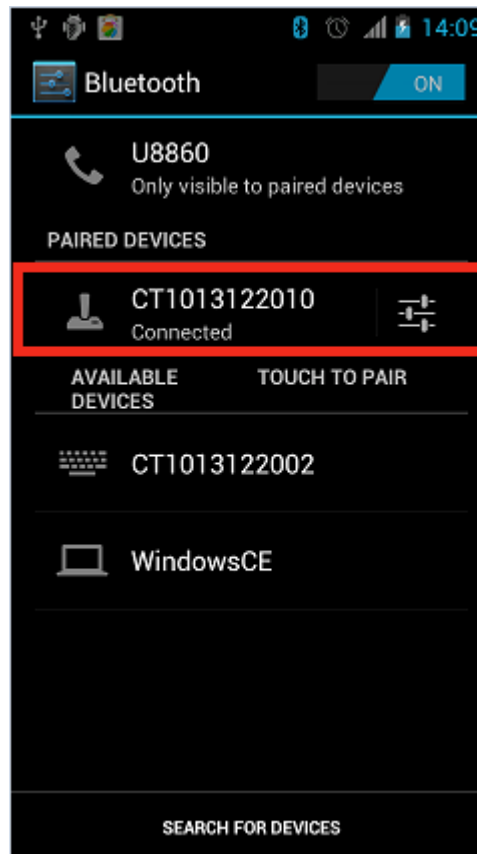
- Turn on Bluetooth in your android device, search TMCT-10 in available devices, and click



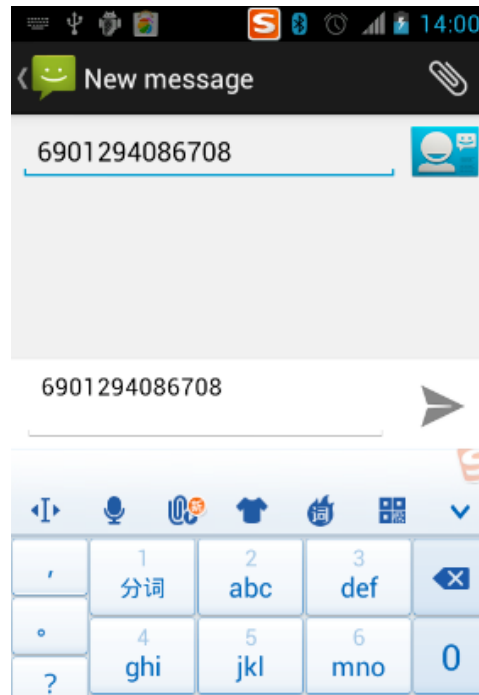
- It will popup Bluetooth pairing request dialog, input the PIN code 10010



- Click OK, you will hear a beep from TMCT-10, that means pairing successfully, you can find paired TMCT-10 on the android device.



- Open a textbox, for example short message, the TMCT-10 can read barcodes into the textbox.



2.4.2 One-click iOS Connection

1. Turn on TMCT-10, and read the following barcodes continuously



Enter Setup



One-click iOS Connection



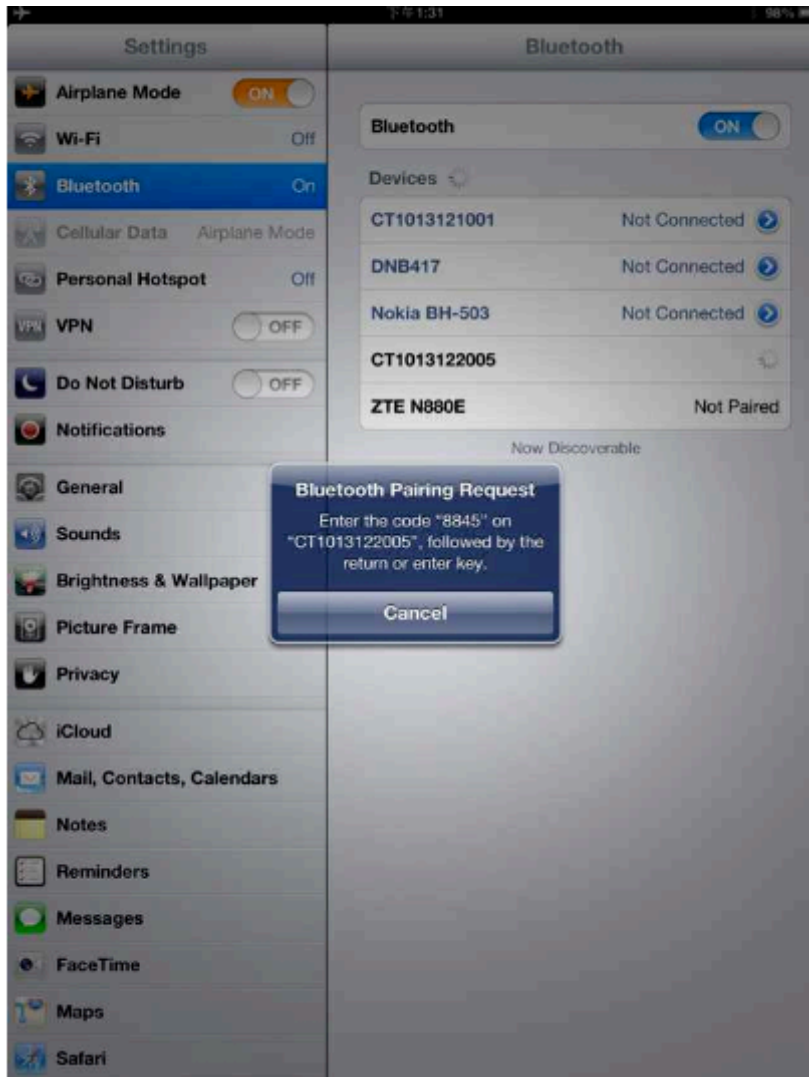
Exit with Save

2. Bluetooth Pairing

- Turn on Bluetooth in your ios device, search TMCT-10 in available devices, and click



- It will popup Bluetooth pairing request dialog, and show the PIN code



- Find above mentioned numbers in following barcodes, read them continuously, and then read 'Exit without Save' barcode



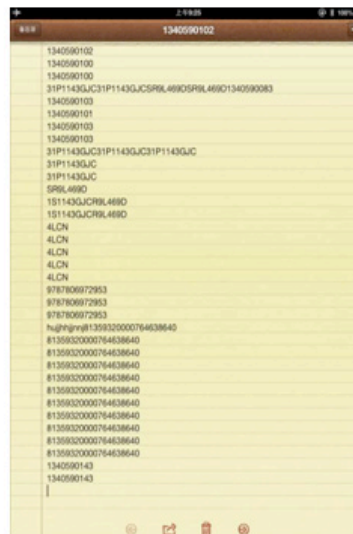
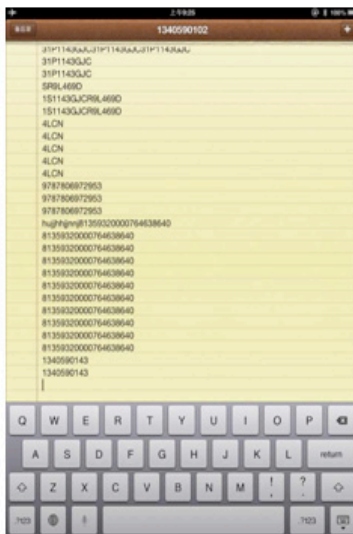
Exit without Save

- You will hear a beep from TMCT-10 if connect successfully, and it will show in the paired devices on iOS device.



3. Active or Hide the Input Method

During the scanning, you may use the soft keypad if you want to add remark information, you just need double click Power key quickly, it will active the soft keypad. If you double click Power key quickly again, the soft keypad will hide. It is shown as following:



2.4.3 Connect via BT Input Method

1. Turn on Bluetooth barcode scanner TMCT-10 or CT20 for setup

- 1) Read 'Enter Setup' barcode



Enter Setup

- 2) Read 'Bluetooth Input Method' barcode



Bluetooth Input Method

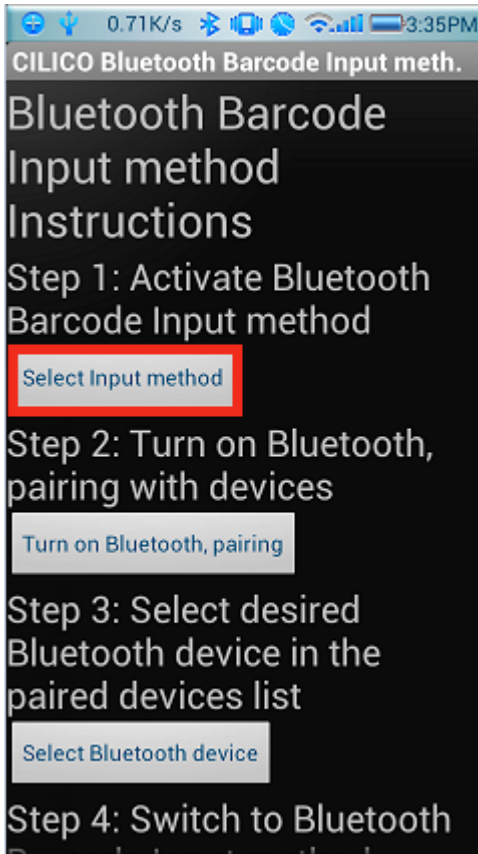
- 3) Read 'Exit with Save' barcode



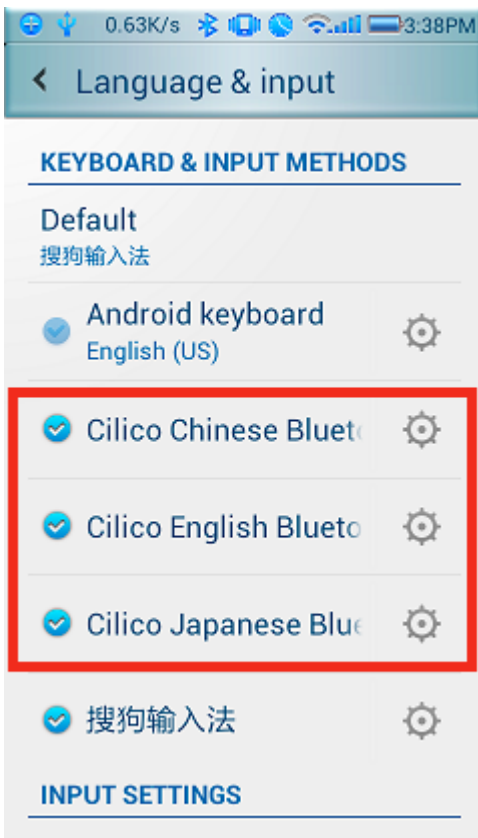
Exit with Save

2. Setup 'CILICO Bluetooth barcode input method'

Step 1: Tap 'Select Input Method'

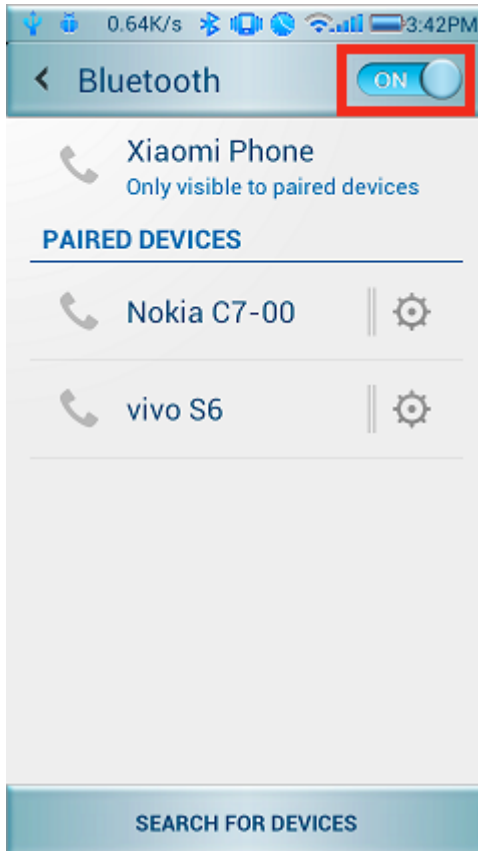


Select Cilico Bluetooth Input method (support Chinese, English and Japanese)



Step 2: Bluetooth Pairing

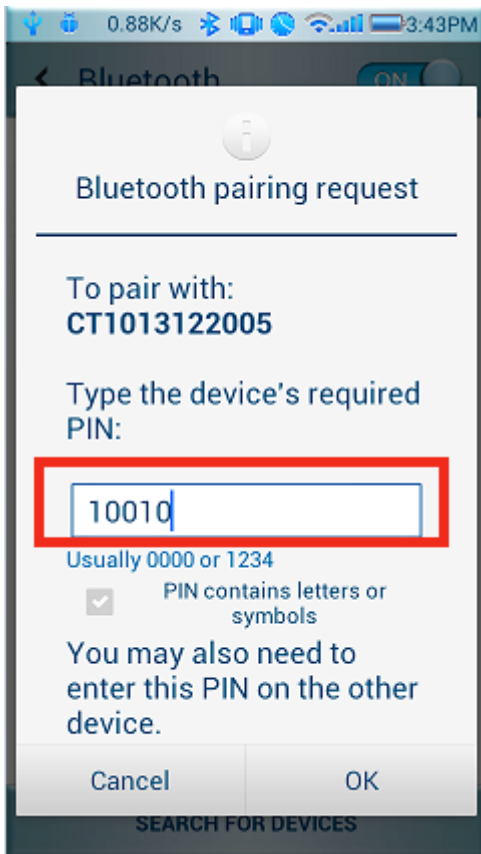
Turn on Bluetooth



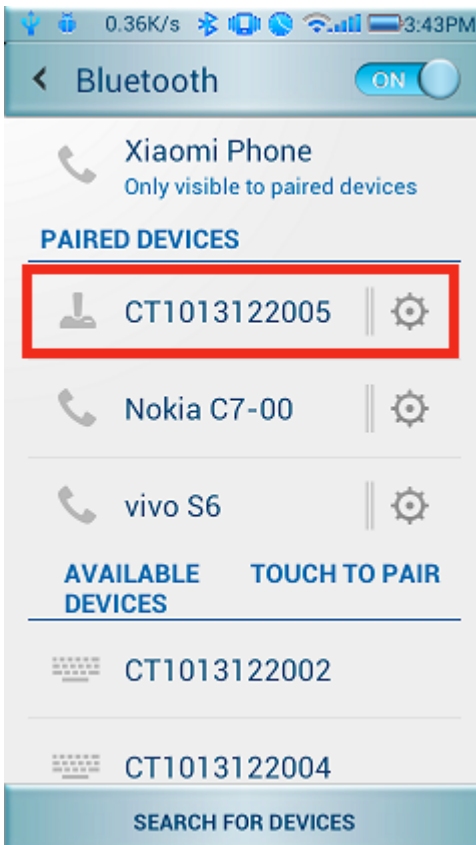
Click 'Search for devices', and will find TMCT-10/CT20 in available devices



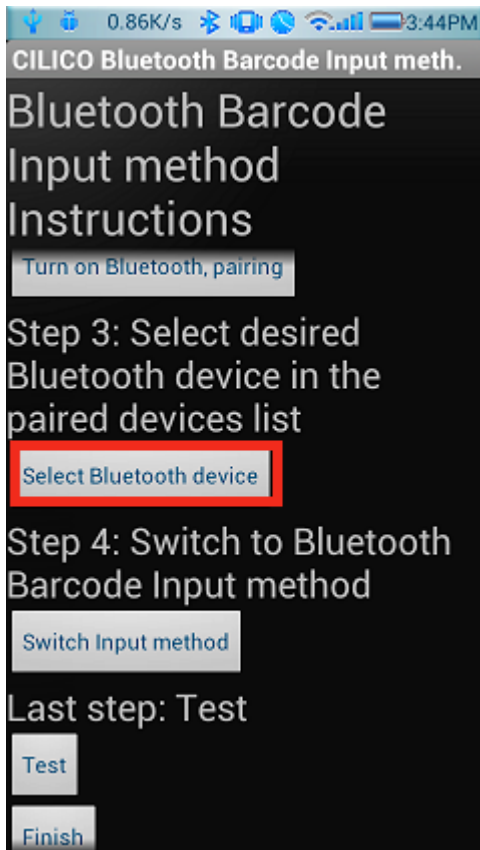
Click for pairing, and input the PIN code in following window, then click OK.



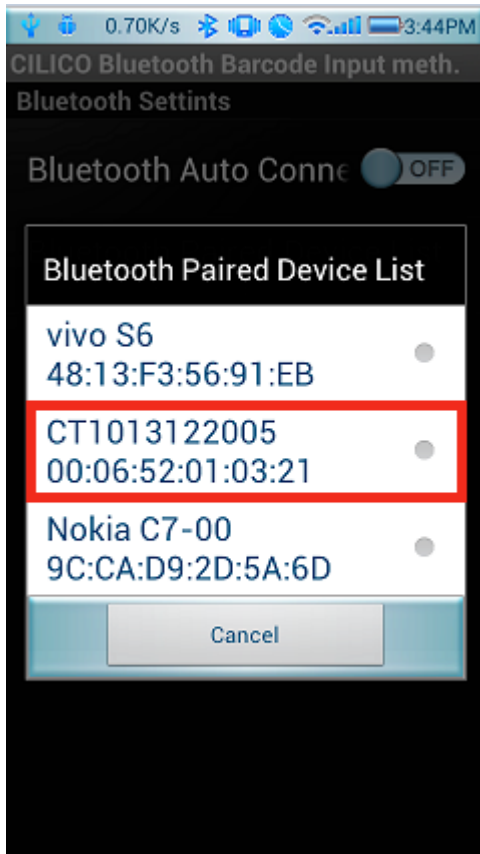
You will find TMCT-10/CT20 in Paired Devices if pairing successfully.



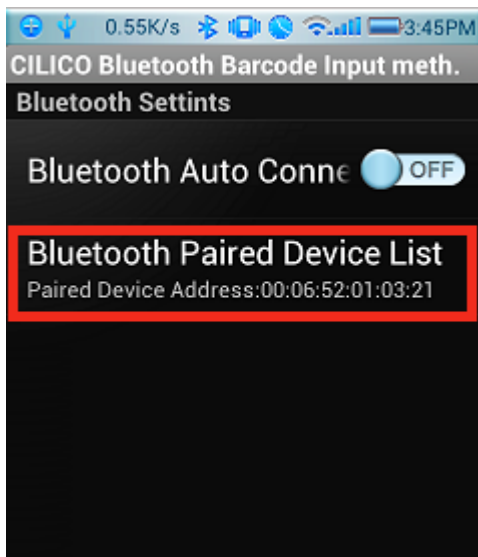
Step 3: Tap 'Select Bluetooth device'



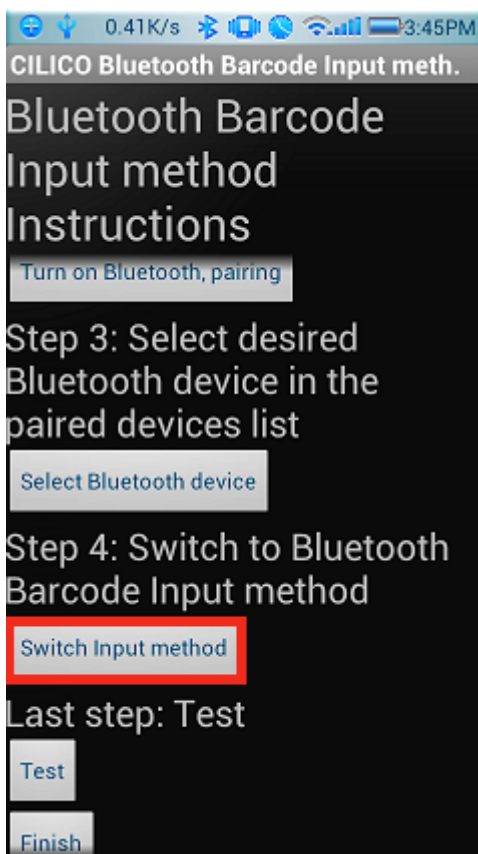
Click TMCT-10/CT20 in Bluetooth Paired Device List, it will connect automatically



You will hear a beep if connect successfully



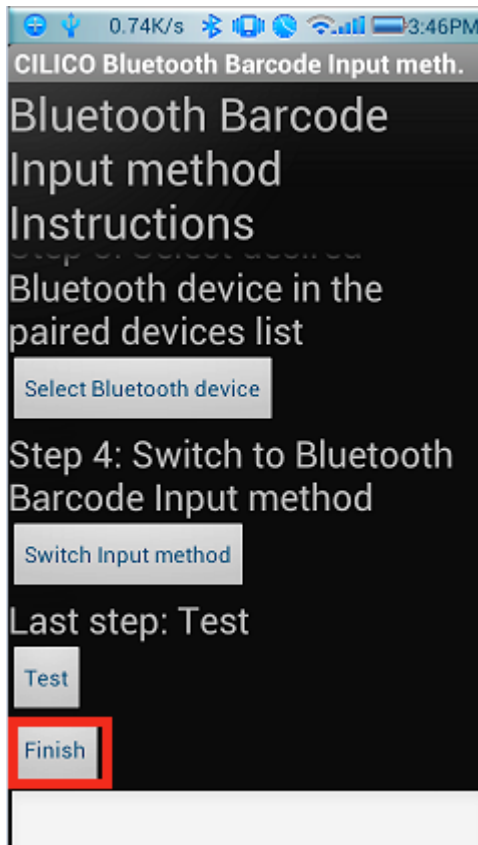
Step 4: Tap 'Switch Input Method'



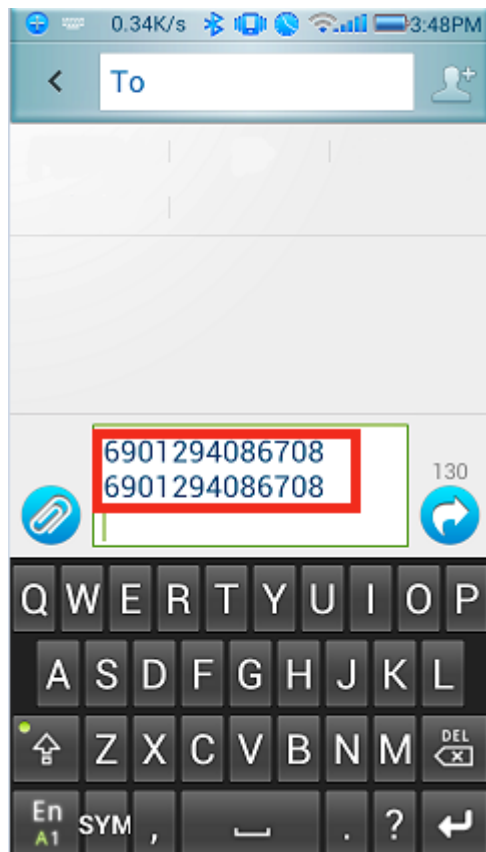
Select Cilico Bluetooth Input method (support Chinese, English and Japanese), the user can choose according to their requirement



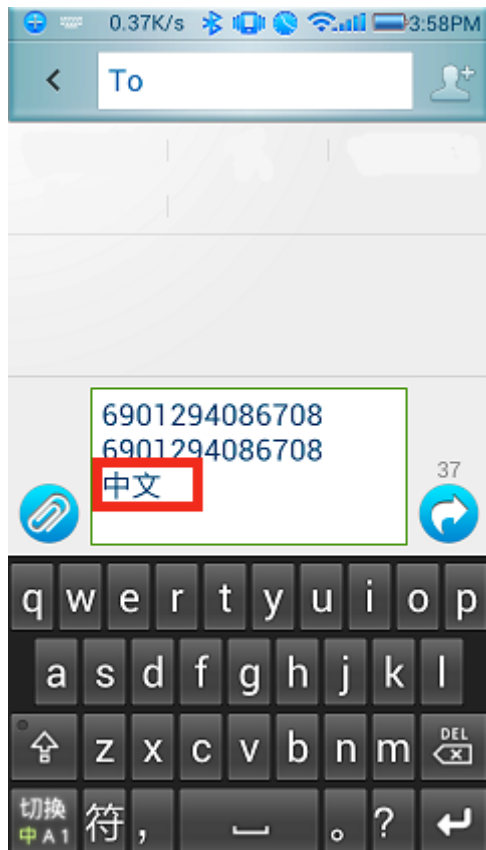
Step 5: Tap 'Finish'



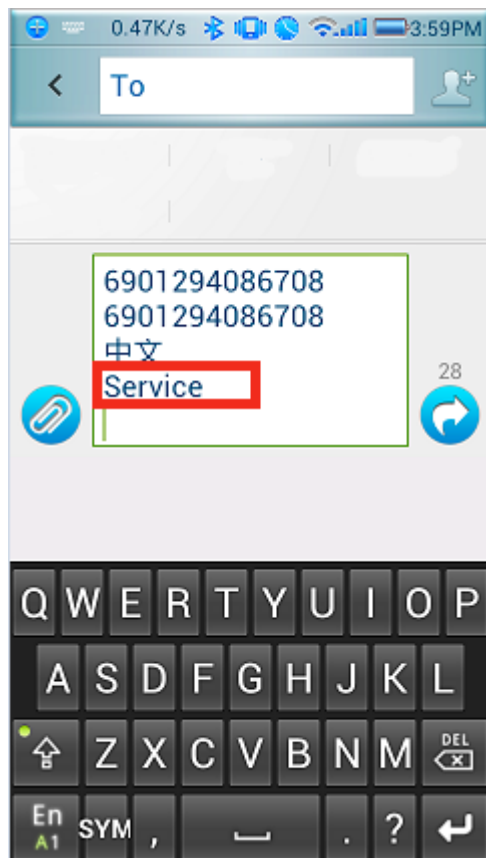
Step 6: Open a editable textbox, then can read the barcodes



Switch to Chinese input method



Switch to English input method



Switch to Japanese input method



Chapter 3 SYMBOLOGY SETTINGS

In this chapter, a brief on the symbology setting is provided for your reference.

Contents

3.1 CODABAR.....	55
3.2 CODE 25 –INDUSTRIAL25.....	56
3.3 CODE 25 –INTERLEAVED 25.....	57
3.4 CODE 25 –MATRIX 25.....	58
3.5 CODE 25-STANDARD 25.....	59
3.6 CODE 39.....	60
3.6.1 Enable/Disable Code 39.....	60
3.6.2 START/STOP Transmission.....	60
3.6.3 Checksum Verification.....	61
3.6.4 STANDARD/FULL ASCII CODE 39.....	62
3.7 CODE 93.....	63
3.8 Code 128.....	64
3.9 EAN-8.....	66
3.9.1 Enable/Disable EAN-8.....	66
3.9.2 Convert to EAN-13.....	66
3.9.3 Checksum Transmission.....	67
3.10 EAN-13.....	68
3.10.1 Enable/Disable EAN-13.....	68
3.10.2 Convert to ISBN.....	68
3.10.3 Checksum Transmission.....	69
3.11 UPC-A.....	70
3.11.1 UPC-A Output ‘0’.....	70
3.11.2 UPC-A Checksum Transmission.....	70
3.12 UPC-E.....	71
3.12.1 Enable/Disable UPC-E.....	71
3.12.2 UPC-E Checksum Transmission.....	71
3.13 MSI.....	72
3.14 CODE 11.....	73

3.1 CODABAR

Decide whether or not to enable Codabar. The TMCT-10 Scanner defaults disable Codabar.



Enable Codabar



(*) Disable Codabar

Note: Read the "Disable Codabar" barcode will make the scanner can not read the Codabar barcode. Thus, if the scanner can not read the Codabar barcode, please trying to read "Enable Codabar" to reset.

For example: Enable Codabar.

1. Read the "Enter Setup" barcode;
2. Read the "Enable Codabar" barcode;
3. Read the "Exit with Save" barcode.



Enter Setup



Exit with Save



Exit without Save

3.2 CODE 25 –INDUSTRIAL25

Decide whether or not to enable Industrial 25. The TMCT-10 Scanner defaults disable Industrial 25.



Enable Industrial25



(*) Disable Industrial25

Note: Read the "Disable Industrial 25" barcode will make the scanner can not read the Industrial 25 barcode. Thus, if the scanner can not read the Industrial 25 barcode, please trying to read "Enable Industrial 25" to reset.

For example: Enable Industrial 25.

1. Read the "Enter Setup" barcode.
2. Read the "Enable Industrial 25" barcode.
3. Read the "Exit with Save" barcode.



Enter Setup



Exit with Save



Exit without Save

3.3 CODE 25 –INTERLEAVED 25

Decide whether or not to enable Interleaved 25. The TMCT-10 Scanner defaults disable Interleaved 25.



Enable Interleaved 25



(*) Disable Interleaved

Note: Read the "Disable Interleaved 25" barcode will make the scanner can not read the Interleaved 25 barcode. Thus, if the scanner can not read the Interleaved 25 barcode, please trying to read "Enable Interleaved 25" to reset.

For example: Enable Interleaved 25.

1. Read the "Enter Setup" barcode;
2. Read the "Enable Interleaved 25" barcode;
3. Read the "Exit with Save" barcode.



Enter Setup



Exit with Save



Exit without Save

3.4 CODE 25 –MATRIX 25

Decide whether or not to enable Matrix 25. The TMCT-10 Scanner defaults disable Matrix 25



Enable Matrix 25



(*) Disable Matrix 25

Note: Read the "Disable Matrix 25" barcode will make the scanner can not read the Matrix 25 barcode. Thus, if the scanner can not read the Matrix 25 barcode, please trying to read "Enable Matrix 25" to reset.

For example: Enable Matrix 25.

1. Read the "Enter Setup" barcode;
2. Read the "Enable Matrix 25" barcode;
3. Read the "Exit with Save" barcode.



Enter Setup



Exit with Save



Exit without Save

3.5 CODE 25-STANDARD 25

Decide whether or not to enable Standard 25. The TMCT-10 Scanner defaults disable Standard 25.



Enable Standard 25



(*) Disable Standard 25

Note: Read the "Disable Standard 25" barcode will make the scanner can not read the Standard 25 barcode. Thus, if the scanner can not read the Standard 25 barcode, please trying to read "Enable Standard 25" to reset.

For Example: Enable Standard 25.

1. Read the "Enter Setup" barcode;
2. Read the "Enable Standard 25" barcode;
3. Read the "Exit with Save" barcode.



Enter Setup



Exit with Save



Exit without Save

3.6 CODE 39

3.6.1 Enable/Disable Code 39

Decide whether or not to enable Code 39, The TMCT-10 Scanner defaults disable Code 39.



(*) Enable Code 39



Disable Code 39

3.6.2 START/STOP Transmission

Decide whether or not to include the start/stop characters in the data being transmitted.



*Transmit Code 39 Start/Stop Characters



*Do Not Transmit Code 39 Start/Stop Characters

For example: Do Not Transmit Code 39 Start/Stop Characters.

1. Read the "Enter Setup" barcode;
2. Read the "Enable Code 39" barcode; (If Code 39 is disabled, it is need to set);
3. Read the "Do Not Transmit Code 39 Start/Stop Characters" barcode;
4. Read the "Exit with Save" barcode.



Enter Setup



Exit with Save



Exit without Save

3.6.3 Checksum Verification

It is not enforced to include the checksum character in the Code 39 data. If checksum character is included, it should be the last character of the barcode data. Checksum character is a calculate value bases on all of the data, and is used to check the data is correct or not.

Thus, if the scanner is set to "Do Not Verify", and the scanner will output all the barcode data.

If the scanner is set to "Verify without Output Checksum Character", and the scanner will check the data bases on the last character of the barcode data. If the check passes, the scanner will output the data without the checksum character; if the check not passes, the scanner will display read failure.

If the scanner is set to "Verify with Output Checksum Character", and the scanner will check the data bases on the last character of the barcode data. If the check pass, the scanner will output the data with the checksum character; if the check not pass, the scanner will display read failure.



*Do Not Verify



Verify without Output Checksum Character



Verify with Output Checksum Character

3.6.4 STANDARD/FULL ASCII CODE 39

Decide whether or not to support Code 39 Full ASCII that includes all the alphanumeric and special character. The TMCT-10 Scanner defaults full ASCII Code 39. It could disable full ASCII Code 39 via set.



Disable Code39 Full ASCII



* Enable Code39 Full ASCII



Enter Setup



Exit with Save



Exit without Save

3.7 CODE 93

Decide whether or not to enable Code 93. The TMCT-10 Scanner defaults disable Code 93.



Enable Code93



(*) Disable Code93

Note: Read the "Disable Code 93" barcode will make the scanner can not read the Code 93 barcode. Thus, if the scanner can not read the Code 93 barcode, please trying to read "Enable Code 93" to reset.

For Example: Enable Code 93.

1. Read the "Enter Setup" barcode;
2. Read the "Enable Code 93" barcode;
3. Read the "Exit with Save" barcode.



Enter Setup



Exit with Save



Exit without Save

3.8 Code 128

Decide whether or not to enable Code 128. The TMCT-10 Scanner defaults enable Code 128.



(*) Enable Code128



Disable Code128

Note: Read the "Disable Code 128" barcode will make the scanner can not read the Code 128 barcode. Thus, if the scanner can not read the Code 128 barcode, please trying to read "Enable Code 128" to reset.

For Example: Disable Code 128

1. Read the "Enter Setup" barcode;
2. Read the "Disable Code 128" barcode;
3. Read the "Exit with Save" barcode.



Enter Setup



Exit with Save



Exit without Save

3.9 EAN-8

3.9.1 Enable/Disable EAN-8

Decide whether or not to enable EAN-8. The TMCT-10 Scanner defaults enable EAN-8.



(*) Enable EAN-8



Disable EAN-8

3.9.2 Convert to EAN-13

There is two ways for EAN-8 to change, convert to EAN-13, or add "0" ahead of EAN-8, and the EAN-8 ID is not change.

Decide whether or not to convert to EAN-13, if EAN-8 convert to EAN-13, it will be read as same as EAN-13. If add a "0" ahead of EAN-8, and the EAN-8 ID is not change, the output ID is still EAN-8 ID.



Convert to EAN-13



Add "0" ahead and ID is not change



(*) Do not Convert



Enter Setup



Exit with Save



Exit without Save

3.9.3 Checksum Transmission

Decide whether or not to transmit Checksum.



*Transmit EAN-8 Checksum



Do Not Transmit EAN-8 Checksum

For example: Enable EAN-8, and Convert to EAN-13.

1. Read the "Enter Setup" barcode;
2. Read the "Enable EAN-8" barcode;
3. Read the "Convert to EAN-13" barcode;
4. Read the "Exit with Save" barcode.



Enter Setup



Exit with Save



Exit without Save

3.10 EAN-13

3.10.1 Enable/Disable EAN-13

Decide whether or not to read EAN-13. The TMCT-10 Scanner defaults enable EAN-13.



(*) Enable EAN-13



Disable EAN-13

3.10.2 Convert to ISBN

Decide whether or not to convert the EAN-13 to ISBN.



Convert EAN-13 to ISBN



* Do Not Convert EAN-13 to ISBN



Enter Setup



Exit with Save



Exit without Save

3.10.3 Checksum Transmission

Decide whether or not to include the checksum character in the data being transmitted.



*Transmit EAN-13 Checksum



Do Not Transmit EAN-13 Checksum

For example: Convert EAN-13 to ISBN.

1. Read the "Enter Setup" barcode;
2. Read the "Convert EAN-13 to ISBN" barcode;
3. Read the "Exit with Save" barcode.



Enter Setup



Exit with Save



Exit without Save

3.11 UPC-A

3.11.1 UPC-A Output '0'

Decide whether or not to add "0" in the output of UPC-A data.



UPC-A Output '0'



*UPC-A Do Not Output "0"

3.11.2 UPC-A Checksum Transmission

Decide whether or not to include the checksum character in the data being transmitted.



*Transmit UPC-A Checksum



Do Not Transmit UPC-A Checksum

For example: UPC-A Output "0", Do Not Transmit UPC-A Checksum.

1. Read the "Enter Setup" barcode;
2. Read the "UPC-A Output "0"" barcode;
3. Read the "Do Not Transmit UPC-A Checksum" barcode;
4. Read the "Exit with Save" barcode.



Enter Setup



Exit with Save



Exit without Save

3.12 UPC-E

3.12.1 Enable/Disable UPC-E

Decide whether or not to enable UPC-E. The TMCT-10 Scanner defaults enable UPC-E.



(*) Enable UPC-E



Disable UPC-E

3.12.2 UPC-E Checksum Transmission

Decide whether or not to include the checksum character in the data being transmitted.



*Transmit UPC-E Checksum



Do Not Transmit UPC-E Checksum

For example: Do Not Transmit UPC-E Checksum

1. Read the "Enter Setup" barcode;
2. Read the "Enable UPC-E" barcode;
3. Read the "Do Not Transmit UPC-E Checksum" barcode;
4. Read the "Exit with Save" barcode.



Enter Setup



Enter with Save



Enter without Save

3.13 MSI

Decide whether or not to enable MSI. The TMCT-10 Scanner defaults disable MSI.



Enable MSI



(*) Disable MSI

Note: Read the "Disable MSI" barcode will make the scanner can not read the MSI barcode. Thus, if the scanner can not read the MSI barcode, please trying to read "Enable MSI" to reset.

For example: Enable MSI.

1. Read the "Enter Setup" barcode;
2. Read the "Enable MSI" barcode;
3. Read the "Exit with Save" barcode.



Enter Setup



Exit with Save



Exit without Save

3.14 CODE 11

Decide whether or not to enable Code 11. The TMCT-10 Scanner defaults disable Code 11.



Enable Code11



(*) Disable Code11

Note: Read the "Disable Code 11" barcode will make the scanner can not read the Code 11 barcode. Thus, if the scanner can not read the Code 11 barcode, please trying to read "Enable Code 11" to reset.

For example: Enable Code 11.

1. Read the "Enter Setup" barcode;
2. Read the "Enable Code 11" barcode;
3. Read the "Exit with Save" barcode.



Enter Setup



Exit with Save



Exit without Save

Chapter 4 DEFINING OUTPUT FORMAT

Before data transmission to the host or device, you can pre-process the data and decide the format of the data transfer.

Contents

_Toc347386307	
4.1 CODE ID	76
4.2 Suffix Code of Barcode Settings.....	77
APPENDIX I	错误! 未定义书签。

4.1 CODE ID

Code ID List

Code Type	Code ID	Hex Value
Codabar	a	61
Code 39	b	62
UPC-E	c	63
EAN-13	d	64
Interleaved 2 of 5 (ITF)	e	65
Code 2 of 5 (Standard)	f	66
MSI	g	67
Code 11	h	68
Code 93	i	69
Code 128	j	6A
Matrix 2 of 5	m	6D
2/5 Industrial	n	6E
EAN-8	o	6F
ISBN	k	6B
UPC-A	l	6C

Decide whether or not to add Code ID in the barcode data of output.



Apply Output ID



(*) Ignore Output ID

For example: Apply Output ID

1. Read the "Enter Setup" barcode;
2. Read the "Output ID" barcode;
3. Read the "Exit with Save" barcode;



Enter Setup



Exit with Save



Exit without Save

4.2 Suffix Code of Barcode Settings

Decide whether or not to apply Enter for suffix of barcode data.



(*) Apply Enter for suffix



Do not Apply Enter for suffix

Decide whether or not to apply Alt to suffix of barcode data.



(*) Apply Alt for suffix



Do not Apply Alt for suffix

For example: Do not Apply Enter for suffix.

1. Read the "Enter Setup" barcode;
2. Read the "Do not Apply Enter for suffix" barcode;
3. Read the "Exit with Save" barcode.



Enter Setup



Exit with Save



Exit without Save

APPENDIX I

The setting barcodes of parameters' value.



0



1



2



3



4



5



6



7



8



9