

FAMILIES

m

powered



metropolitanTM
family services

what is the power of **m**?

WE **m**POWER FAMILIES TO LEARN, TO EARN,
TO HEAL AND TO THRIVE.

PART MENTOR, PART MOTIVATOR, PART
ADVOCATE, SINCE 1857 **m**ETROPOLITAN
FAMILY SERVICES HAS BEEN THE ENGINE
OF CHANGE THAT **m**POWERS FAMILIES TO
REACH THEIR GREATEST POTENTIAL AND
POSITIVELY IMPACT THEIR COMMUNITIES.

mpowered for life



metropolitan[™]
family services



CONTENTS

PRESIDENT'S LETTER	1-2
LOCATIONS	3
CLIENT STORIES	4-6
FINANCIALS	7-8
HISTORY	9-12
VOLUNTEERS	13
BOARDS	14-16
EVENTS	17-18
DONORS	19-29



METROPOLITAN IN MOTION

Supporters and Friends,

This past year, the agency continued last year's incredible growth as we increased our capacity to provide services in our core competencies of education, economic stability, emotional wellness and empowerment. We remained flexible, applying creative service models to best meet the challenges of the human services sector, while providing evidence based solutions for the evolving needs of the families we serve. We are very much an agency in motion.

For more than 156 years, Metropolitan Family Services has provided the highest quality, compassionate services for Chicago-area families in need. And throughout our history, we have sought opportunities to establish new collaborations that best use local resources to offer relevant, caring human services programming.

That spirit of cooperation is alive and well today, as demonstrated by a series of well-planned, innovative partnerships in which we entered this past year. They include an anti-trafficking initiative, coordinated by our Legal Aid Society, involving private law firms, local, state and federal law enforcement agencies, and social service organizations. The initiative provides comprehensive legal and social services to survivors of human trafficking and labor trafficking. With our law firm partners the initiative offers legal representation on expungement of criminal records, obtaining restitution from traffickers, credit repair, labor and employment issues, accessing education, family law and child welfare issues, and many other areas of the law to help survivors heal and work toward empowerment.



In addition, the City of Chicago Department of Family and Support Services, WINGS (Women in Need Growing Stronger), and the Greater Southwest Development Corporation announced plans to build a new domestic violence shelter on the city's Southwest Side. Metropolitan will provide clinical,

legal and court advocacy services for survivors living at the shelter.

Internal infrastructure support has been another priority. On the heels of last year's significant growth, our staff has done an amazing job efficiently utilizing time and resources while maintaining the high-quality, compassionate services for which we are known. The challenge is to continue to develop our people and put the systems in place to support the life-changing work they do. To that end, we have upgraded our technology platform and are undergoing Lean Six Sigma training, which has helped us to streamline processes.

We also launched another important initiative, our agency rebranding, this year. The new branding succinctly communicates who we are and what we do in a visually compelling way. We have embraced the branding and incorporated it in our website, electronic communications and printed materials. We hope you share our excitement.

While the agency's growth and developments have been exciting, new initiatives are equally as promising. Metropolitan has partnered with Chicago Public Schools, the City of Chicago Department of Family and Support Services, the Mile Square Health Center and other partnering organizations to open the new Metropolitan Family Services Learning and Wellness Center in the Arthur A. Libby Elementary School Annex in the West Englewood/ New City neighborhood. Opened in fall 2013, the center provides early learning, behavioral health

and primary care services for the area's youngest residents and a spectrum of programs for families.

Looking ahead, Metropolitan has been awarded a state grant to build a children's center in the Gage Park/Brighton Park neighborhood. The Gage Park Early Childhood Development Center will champion caring for the whole child, with early childhood education, development and pediatric primary care. We are enthused about this opportunity, as Gage Park/Brighton Park is the number one area of need for early childhood services in Illinois.

Metropolitan's new early childhood centers, WINGS and the pediatric health center all share something in common. They are examples of new models – new ways of providing services through strategic partnerships involving multiple agencies. In early childhood education, integrated health care and domestic violence support services, we are breaking new ground in serving clients by accessing agencies' complementary strengths and making the most of resources.

We want to thank our esteemed Board of Directors, generous supporters, exceptional staff, devoted volunteers and engaged community boards for the commitment you have shown Metropolitan Family Services. We look forward to continuing to work together with you as we **m**power Chicago-area families to learn, to earn, to heal and to thrive.

RIC ESTRADA

mpowered as

PRESIDENT AND CEO

MARTHA MELMAN

mpowered as

BOARD CHAIR

OUR LOCATIONS

ADMINISTRATIVE HEADQUARTERS

MAIN OFFICE

One North Dearborn, Suite 1000
Chicago, IL 60602
312-986-4000

EMPLOYEE ASSISTANCE NETWORK (EAN)

312-986-4249

LEGAL AID SOCIETY

312-986-4200

CITY CENTERS

CALUMET

235 East 103rd Street, Chicago, IL 60628
773-371-3600

Serving Roseland, Beverly, Chatham, Englewood, Morgan Park, Mount Greenwood, North Central, Pullman, Riverdale, Washington Heights, Washington Park, West Pullman and Woodlawn

Additional locations:

- Center for Working Families (CWF)
(at Kennedy-King College)
747 West 63rd Street, Rm. 106, Chicago, IL 60621

Lathrop Homes Sites

- 2638 & 2640 North Hoyne, Chicago, IL 60647

• North Central

1414 North Talman, Chicago, IL 60622

Trumbull Park Homes Sites

(serving Trumbull Park)

- 2413 East 107th Street, Chicago, IL 60617
- 2411 East 107th Street, Chicago, IL 60617

• Woodlawn Choice Neighborhood

830 E. 63rd Street, Chicago, IL 60621

MIDWAY

3843 West 63rd Street, Chicago, IL 60629
773-884-3310

Serving Chicago Lawn, Englewood, West Englewood, West Lawn, Gage Park, Clearing

Additional locations:

- Midway Children's Center
3215 West 63rd Street, Chicago, IL 60629
- Midway Head Start
6422 South Kedzie, Chicago, IL 60629
- Jane Addams Domestic Violence Court
Advocacy Program
555 West Harrison, Chicago, IL 60607

NORTH (and NORTH CHILDREN'S CENTER)

3249 North Central Avenue, Chicago, IL 60634
773-371-3700

Serving Belmont Cragin, Hermosa, Irving Park, Portage Park

SOUTHEAST CHICAGO

3062 East 91st Street
Chicago, IL 60617
773-371-2900

Serving South Chicago, Calumet Heights, the East Side, Hegewisch, South Deering

EVANSTON/
SKOKIE VALLEY
2,387 CLIENTS



NORTH
6,812 CLIENTS



HEADQUARTERS
9,819 CLIENTS



DUPAGE
10,045 CLIENTS



MIDWAY
10,975 CLIENTS



CALUMET
10,641 CLIENTS



SOUTHEAST
CHICAGO
6,639 CLIENTS



SOUTHWEST
6,108 CLIENTS



SUBURBAN CENTERS

DUPAGE

222 East Willow Avenue, Wheaton, IL 60187
630-784-4800

Serving DuPage County

Additional locations: Elmhurst, Naperville, Woodridge

- Treasure House Resale Shop | 497 Pennsylvania Avenue, Glen Ellyn, IL 60137
- Anne M. Jeans Elementary School | 16 West 632 91st Street, Burr Ridge, IL 60527
- Ann Reid Early Childhood Center | 101 South Naper Boulevard, Naperville, IL 60540
- Ardmore Elementary School | 644 South Ardmore Avenue, Addison, IL 60101
- Early Childhood Education Center | 543 North Wood Dale Road, Wood Dale, IL 60191
- Educare of West Chicago | 851 Pearl Road, West Chicago, IL 60185
- Johnson Elementary School | 2S700 Continental Drive, Warrenville, IL 60555
- St. Andrew United Methodist Church | 250 North Gary Avenue, Carol Stream, IL 60188
- Stone School | 1404 West Stone Road, Addison, IL 60101
- Tioga School | 212 West Memorial Road, Bensenville, IL 60106
- Outreach Community Ministries Community Center | 345 South President Center, Carol Stream, IL 60188
- Iowa Center | 338 North Iowa, Villa Park, IL 60181

EVANSTON/SKOKIE VALLEY

5210 Main Street, Skokie, IL 60077
847-425-7500

Serving Evanston, Lincolnwood, Niles, Morton Grove; Golf and Maine Townships

Additional location:

- Evanston | 820 Davis Street, Suite 218, Evanston, IL 60201

SOUTHWEST

10537 South Roberts Road, Palos Hills, IL 60465
708-974-2300

Serving Blue Island, Calumet, Lemont, Oak Forest, Orland; Palos and Worth Townships

Additional location:

- Blue Island | 13136 South Western, Blue Island, IL 60406



GISELLE IS PREPARED FOR HER EDUCATION

SHE WILL START KINDERGARTEN
AS AN EXPERIENCED STUDENT

At 4, preschooler Giselle already is an experienced student.

This is Giselle's second year at the Midway Head Start Center, which provides early learning services for children ages 3-5.

Like her three older siblings who graduated from Midway's Head Start program before her, Giselle will start kindergarten prepared—not only academically, but socially and emotionally as well.

"All of my kids were ready for kindergarten," said Griselda, Giselle's mother. "They learned how to read, they learned their letters, their numbers. But my kids are shy. So Head Start really helped them learn how to be independent. It gave them confidence. They made new friends and were used to going to school."

That's an important ingredient in school preparedness and success, according to Master Teacher Ruby Perez Vargas, who teaches Giselle and taught her three other siblings as well. "Parents may teach the ABCs, but here we also teach the children how to make friends, how to learn, how to handle parent separation. It's all about exposure. It's not all new to them. My kids are a step ahead when they get to kindergarten. Their anxiety is less and their confidence is up."

Griselda came to the Midway program at the suggestion of a friend who enrolled her children here. That was six years ago. Today, Griselda is President of the Parent Policy Committee at the Midway Head Start Center. The group makes suggestions for menu and budget items, organizes volunteer activities and gives parents a chance to come together to discuss the rewards and challenges of raising children.

"My experience here has been great," Griselda said, "especially with teachers. I am very thankful."



907

children received
Head Start services
in Chicago and
DuPage County



JUST \$1

invested in
Head Start
reaps a return
on investment
between \$7-\$9



GABRIELLE IS DETERMINED TO ACHIEVE MORE

YOU HAVE TO HAVE THE INITIATIVE TO GO OUT AND GET IT

That's advice from 21-year-old Gabrielle, a client of the Center for Working Families. Those are words she lives by. Gabrielle knows a thing or two about determination.

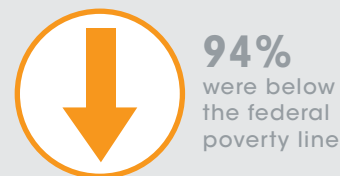
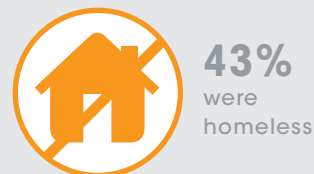
Gabrielle, "Gabby," a student at Kennedy-King College, came to the Center for Working Families in January 2011 for help finding a job. She came to the right place. Gabby currently works three jobs—at the college bookstore, Walgreens and Midwest Security—all while attending classes.

The Center for Working Families is a career and personal financial service center on the campus of Kennedy-King College, one of many economic stability programs at Metropolitan. It offers an innovative framework of integrated employment, financial education and income support services.

Two weeks of job readiness services at the Center included helping Gabby compile her resume, conducting mock interviews and even giving her wardrobe advice. She also met with Vincent Perry, a financial coach, who helped her budget to build savings, establish credit and learn financial responsibility.

Gabby went from not having a FICO credit score at all, due to an insufficient credit history, to an impressive 625 FICO score in less than one year. "A good credit rating is important because it shows you're responsible," says Gabby, "and you might get your house for a lower interest rate." More than half of Vincent's clients either establish credit histories for the first time or improve their scores. "Usually getting this younger generation to save and understand the importance of having good credit is a hard sell," Vincent said. "But Gabby is young and saving."

CLIENTS IN OUR ECONOMIC STABILITY PROGRAMS





SHEILA FOUND THE SUPPORT SHE NEEDED

WITH THE RIGHT SERVICES, SHEILA'S VOICE WAS HEARD

"Sheila" found out her boyfriend was seeing someone else and wanted him out of her house. When the 300-pound bodybuilder became physically abusive, Sheila feared for her safety. This was not the first time he had lashed out and physically hurt her.

Sheila set out to secure an order of protection and file criminal battery charges against her boyfriend, putting in motion a year-long process of court dates, continuances, charges and plea deals. That's when she met Court Advocate Meredith with Metropolitan's Jane Addams Domestic Violence Court Advocacy Program, one of many programs focused on domestic violence.

Advocates in the program help survivors of domestic violence by

writing orders of protection against abusers, acting as liaisons to the State's Attorney's Office, educating clients about domestic violence and safety planning, providing referrals and generally offering support.

These services can make a real difference. "Sometimes the outcome of the case is different because of our support or education or advocacy," Meredith said. "Criminal charges may not be approved, but when we accompany clients to their meeting with the State's Attorney's Office, that can change. I think without us, people often don't know the really important details that need to come out."

Sheila had spent four months in proceedings to get the order of protection. Pressing criminal charges meant starting an entirely new procedure. "There is a likelihood that I would not have seen the case through if it was not for Meredith

and her group," said Sheila, a 49-year-old office manager. "The process completely turned around for me then." Criminal charges were approved by the State's Attorney's Office, which led to a trial where her boyfriend was found guilty of domestic battery.

"My priority is to empower clients to do what they want to do," said Meredith, who accompanied Sheila to every one of her court dates. "I want them to know all of their options and offer guidance and support."



148

orders of protection were issued by the Legal Aid Society



96%

of the 610 family law cases were domestic violence clients

OUR FINANCIALS AND NUMBERS

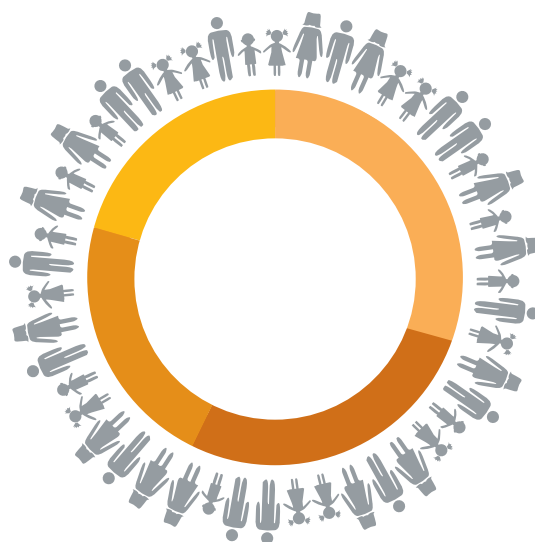


63,426

CLIENTS
SERVED

FY13

**AN INCREASE OF 10,000
CLIENTS SERVED SINCE FY12**



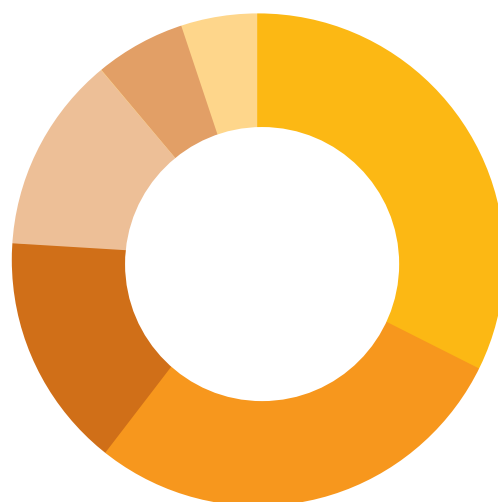
CLIENTS BY SERVICE AREA

- 32% ■ EDUCATION (20,566 CLIENTS)
- 27% ■ EMPOWERMENT (17,081 CLIENTS)
- 21% ■ EMOTIONAL WELLNESS (13,000 CLIENTS)
- 20% ■ ECONOMIC STABILITY (12,779 CLIENTS)



OPERATING REVENUE

- 62% ■ GOVERNMENT GRANTS
- 14% ■ PROGRAM SERVICE FEES
- 12% ■ CONTRIBUTIONS
- 5% ■ ENDOWMENT PAYOUT
- 4% ■ UNITED WAY
- 3% ■ INCOME FROM TRUSTS
& OTHER INCOME



OPERATING EXPENSES

- 34% ■ EDUCATION
- 28% ■ EMOTIONAL WELLNESS
- 19% ■ ECONOMIC STABILITY
- 4% ■ EMPOWERMENT
- 11% ■ MANAGEMENT & GENERAL
- 4% ■ FUNDRAISING

THE AGENCY HAS GROWN OVER
50 PERCENT
 IN THE LAST **THREE** FISCAL YEARS

STATEMENT OF ACTIVITIES

Amounts in 000s

OPERATING REVENUE	2013	2012
GOVERNMENT GRANTS	28,662	20,961
PROGRAM SERVICE FEES	6,362	6,692
CONTRIBUTIONS	5,600	4,644
UNITED WAY	1,879	1,845
ENDOWMENT PAYOUT	2,468	2,143
INCOME FROM TRUSTS AND OTHER INCOME	1,303	1,090
TOTAL OPERATING REVENUE	46,274	37,375

OPERATING EXPENSES

EMOTIONAL WELLNESS	12,819	10,774
EDUCATION	15,571	10,884
ECONOMIC STABILITY	8,486	6,949
EMPOWERMENT	1,835	1,620
TOTAL PROGRAM EXPENSES	38,711	30,227
MANAGEMENT AND GENERAL	4,896	4,506
FUNDRAISING	1,588	1,619
TOTAL OPERATING EXPENSES	45,195	36,352
OPERATING SURPLUS (DEFICIT)	1,079	1,023

OTHER CHANGES IN NET ASSETS

DEPRECIATION AND AMORTIZATION	(662)	(644)
NET INVESTMENT GAINS (LOSSES)	2,421	(2,990)
RECOGNITION OF PENSION LIABILITY UNDER NEW ACCOUNTING STANDARD	3,844	(3,609)
CHANGE IN MARKET VALUE OF INTEREST RATE SWAP	1,496	(2,916)
OTHER	(84)	169
NON OPERATING ACTIVITY	7,015	(9,990)
TOTAL CHANGE IN NET ASSETS	8,094	(8,967)
NET ASSETS AT BEGINNING OF YEAR	38,706	47,673
NET ASSETS AT END OF YEAR	46,800	38,706



HIGHEST RATING FOUR STARS ON CHARITY NAVIGATOR

Charity Navigator is America's largest charity evaluator that rates non-profit organizations and covers more than 5,000 charities. In 2013 we received four stars, their highest ranking.

STATEMENT OF FINANCIAL POSITION

Amounts in 000s

ASSETS	2013	2012
CASH	258	243
RECEIVABLES	7,104	6,577
INVESTMENTS	38,434	36,474
INTEREST IN TRUSTS	13,496	12,824
PROPERTY AND EQUIPMENT	17,452	17,794
OTHER	629	491
TOTAL ASSETS	77,373	74,403

LIABILITIES & NET ASSETS

ACCOUNTS PAYABLE AND ACCRUALS	4,731	3,365
LINE OF CREDIT	2,050	3,350
NOTES PAYABLE	1,159	1,215
BONDS PAYABLE	12,700	12,700
PENSION LIABILITY	5,824	9,790
OTHER	4,109	5,277
TOTAL LIABILITIES	30,573	35,697
NET ASSETS	46,800	38,706
TOTAL LIABILITIES & NET ASSETS	77,373	74,403

mpo

were



metropolitanTM
family services

families **m**powered

OUR NEW VOICE

We begin a new chapter of our life with the voice of **m**powerment. We've changed our logo and look to emphasize the power of **m**. Our icon is a family unit whose embrace symbolizes strength. Our story is centered on all levels of empowerment. Our donors are empowered to give. Our staff is empowered to serve, and our clients are empowered to learn, to earn, to heal and to thrive.



1950-1987



1988-1994



1995-2007



2013-

IN FY2013

WE **m**POWERED
12,779 CLIENTS TO EARN

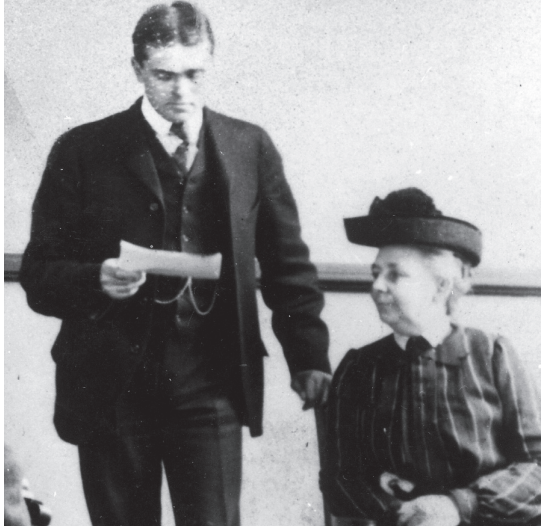
WE **m**POWERED
13,000 CLIENTS TO HEAL

WE **m**POWERED
17,081 CLIENTS TO THRIVE

WE **m**POWERED
20,566 CLIENTS TO LEARN

1857

THE CHICAGO RELIEF AND AID SOCIETY IS INCORPORATED BY THE ILLINOIS STATE LEGISLATURE.



1919

THE CHICAGO LEGAL AID SOCIETY BECOMES PART OF UNITED CHARITIES. THE RENAMED LEGAL AID BUREAU BEGINS PROVIDING FREE LEGAL SERVICE FOR CIVIL LAW CASES.



1930

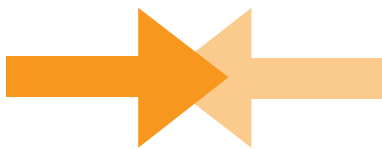
UNITED CHARITIES SERVES MORE THAN 20,000 PEOPLE EACH MONTH DURING THE GREAT DEPRESSION.

1934

UNITED CHARITIES HELPS ESTABLISH THE COMMUNITY FUND OF CHICAGO, NOW KNOWN AS THE UNITED WAY.

1871

MAYOR MASON APPOINTS THE CHICAGO RELIEF AND AID SOCIETY TO ADMINISTER ALL RELIEF, NEARLY \$10 MILLION IN MONEY AND GOODS, TO VICTIMS OF THE GREAT CHICAGO FIRE.



1888

THE CHICAGO RELIEF AND AID SOCIETY AND CHICAGO CHARITY ORGANIZATION MERGE, BRINGING A GREATER FOCUS ON POVERTY PREVENTION TO THE ORGANIZATION.

1909

THE CHICAGO RELIEF AND AID SOCIETY AND THE CHICAGO BUREAU OF CHARITIES MERGE TO FORM UNITED CHARITIES OF CHICAGO.

United Charities of Chicago

1935

UNITED CHARITIES LEADER JOEL D. HUNTER SERVES ON AN OFFICIAL ADVISORY COUNCIL ESTABLISHED BY PRESIDENT FRANKLIN D. ROOSEVELT TO HELP SHAPE WHAT WOULD BECOME THE SOCIAL SECURITY ACT.



1966



UNITED CHARITIES EXPANDS ITS SERVICES AND OPENS ITS FIRST SUBURBAN OFFICE IN PALOS HILLS TO SERVE SOUTHWEST COOK COUNTY.

1995

UNITED CHARITIES CHANGES ITS NAME TO METROPOLITAN FAMILY SERVICES TO BETTER REFLECT THE WORK AND SCOPE OF THE BROAD COMMUNITY IT SERVES.



2006

METROPOLITAN MOVES TO ITS CURRENT HEADQUARTERS AT ONE NORTH DEARBORN IN CHICAGO AND CONTINUES TO SERVE MORE THAN 50,000 INDIVIDUALS AND FAMILIES ANNUALLY.

2007

METROPOLITAN CELEBRATES ITS 150TH ANNIVERSARY AND CONVENES THE INAUGURAL SUMMIT ON THE METROPOLITAN FAMILY, BRINGING TOGETHER 300 PROMINENT LEADERS TO INSPIRE NEW SOLUTIONS TO CHALLENGES FACING FAMILIES.



1985

A NEW OFFICE IS ESTABLISHED ON CHICAGO'S SOUTHEAST SIDE TO SERVE THE COMMUNITY THAT WAS SEVERELY AFFECTED BY THE CLOSING OF LOCAL STEEL MILLS.

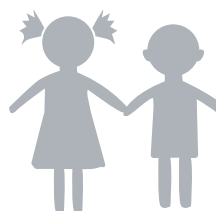
1987

UNITED CHARITIES FURTHERS ITS EXPANSION IN THE SUBURBS, ACQUIRING THE DUPAGE CENTER.



2012

METROPOLITAN IS AWARDED THE CONTRACT FOR HEAD START IN DUPAGE COUNTY, ACQUIRES THE COURT ADVOCACY PROGRAM, AND IS NAMED UNITED WAY AGENCY PARTNER OF THE YEAR.



OUR VOLUNTEERS

Showing up early and staying late at events, sparking conversations and inviting friends to support our initiatives - Metropolitan has more than 800 volunteers from community and event boards to resale shop sales and administrative help. Our volunteers are some of our most dedicated supporters.

800+



LEGAL AID SOCIETY PRO BONO



**11,030 total
number of hours**
were volunteered

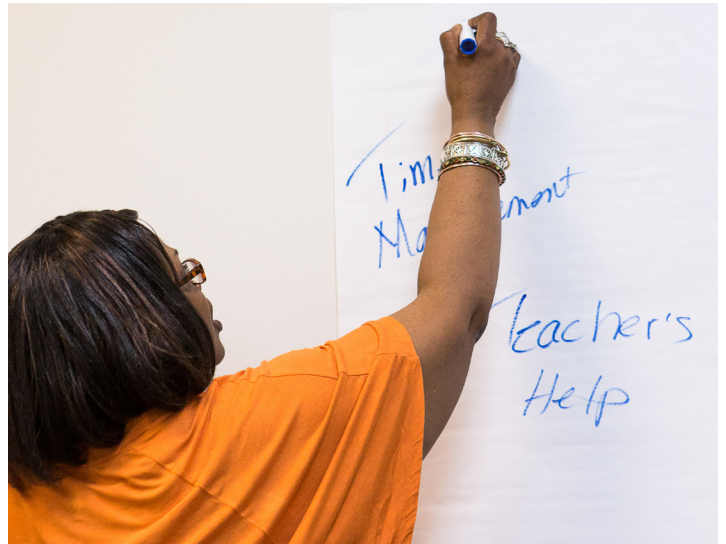


The hours volunteered by
the pro bono partnerships
are **worth over \$2 million.**

**"I BECAME A
MENTOR BECAUSE
I WANTED TO GIVE.
THE THING I DIDN'T
REALIZE WAS HOW
MUCH I'D GET."**



CHRIS COYLE
Volunteer with MetroMentors



BOARD MEMBERS

BOARD OF DIRECTORS

Martha W. Melman, Chair
 Tony W. Hunter, Vice Chair
CEO and Publisher/Chicago Tribune Company, CEO/Tribune Publishing
 John L. MacCarthy, Secretary
Nuveen Investments, Inc.
 Erik D. Barefield
Mesirow Financial
 Charles B. Boehrer
Winston & Strawn LLP
 Marcus E. Boggs
Merrill Lynch Wealth Management
 Erica F. Canzona
Goldman Sachs & Co.
 Robert C. Carr
BP Amoco (retired)
 Piyush Chaudhari
SymphonyIRI
 Julie Chavez
Bank of America
 Julia A. Cloud
Deloitte Tax LLP
 Merle Goldblatt Cohen
 Jennifer Comparoni
The Boston Consulting Group
 Marcus L. Cooper
Zurich NA
 Timothy S. Crane
Wintrust Financial Corporation
 John M. Cregier
U.S. Cellular
 Craig Esko
The PNC Financial Group
 Zachary T. Fardon
Latham & Watkins LLP
 Dwight P. Fawcett
Heitman LLC
 Michael P. Foradas
Kirkland & Ellis LLP
 Erin M. Gardiner
Edelman
 C. Gary Gerst
KCI, Inc.
 Steven R. Gilford
Proskauer Rose LLP
 James V. Gilliam
JPMorgan Chase
 Kristine M. Givens
Harris myCFO™
 David F. Graham
Sidley Austin LLP

Stephen M. Griesemer
May River Capital
 Julie Q. Harmon
PwC
 Wallace W. Harris, Jr.
BMO Harris
 William D. Heinz
Jenner & Block LLP
 Roger C. Hochschild
Discover Financial Services
 Lawrence Howe
Chicago Community Trust (retired)
 R. Thomas Howell, Jr.
American Bar Association (retired)
 W. Kirk James
Hub International Limited
 Ashley Duchossois Joyce
Individual and Family Therapist
 Thomas R. Kolder
Crist|Kolder Associates LLC
 Ronald D. Kropp
Illinois Tool Works, Inc.
 Jeanne Marcus
Marcus Design Studio
 Glenn Mazade
RBS Citizens, N.A.
 John V. N. McClure
The Northern Trust Company (retired)
 Nadia Miranda
Manac Corporation
 Peyton H. Owen, Jr.
The Lightstone Group
 Diana Palomar
ABC7 Chicago
 Virginia Johnson Pillman
Virginia M. Johnson & Associates
 Daniel F. Rahill
FGMK LLC
 Barbara Rapp
 Allen A. Rodriguez
 Kathleen K. Rummel
KR Communications
 Lisa Cohen Schenkman
 Eileen P. Scudder
Deloitte LLP (retired)
 Laurie Fetzer Shults
 Leslie M. Smith
Kirkland & Ellis LLP
 Scott C. Solberg
Eimer Stahl LLP

Byron O. Spruell
Deloitte Touche Tohmatsu Limited
 James E. Thompson
Leo Burnett USA (retired)
 David S. Tropp
CB Richard Ellis
 Lynn Turner
 Michael A. Vardas, Jr.
The Northern Trust Company
 Debbie K. Wright
Kraft Foods

ADVISORY BOARD

Robert E. Allgyer
 Edward K. Banker
 James J. Brice
 Michael J. Callahan
 David Carpenter
 Frank Clark
 Calvin J. Coolier
 Peter D. Crist
 Karen Crotty
 John D'Arcy Jr.
 Scott Davis
 Benjamin H. DeBerry
 Robert A. Eckert
 Victor Elting III
 Charles Feldstein
 Wade Fetzer
 Rhonda Germany
 Susan Getzendanner
 Graham C. Grady
 Robert N. Grant
 Bradley Grubb
 Elizabeth Harrington
 Denis J. Healy
 Robert A. Helman
 Mrs. Wm. Bruce Hoff, Jr.
 Samuel W. Hunt, Jr.
 Robert T. Isham
 Carl B. Jacobs
 Jeremiah S. James II
 Scott Jones
 William G. Jurgensen
 Robert S. Karlblom
 Robert J. Kelly
 Donald G. Kempf
 Young Kim
 Robert P. Knight
 Robert C. Knuefper, Jr.
 L. Bates Lea
 James Lewis
 Edward M. Liddy
 Richard J. Loewenthal
 C. Kenneth Love
 Edward W. Lyman, Jr.
 R. Mark Mallory
 Thomas J. McCaffrey

Terry McCaffrey
 Mark J. McCarville
 Sarah McClelland
 Marilyn McCoy
 Vivian McMillan
 Michael I. Miller
 John R. Montgomery III
 George Munoz
 Roger Nelson
 Nicholas S. Noyes
 Barbara Peck
 Barbara Petersen
 Alan Peterson
 Cordell Reed
 George G. Rinder
 Raymond Risley
 Douglas H. Ruud
 John C. Ryan
 Robert W. Schoder
 W. Rick Stearns
 Jennifer Straub Corrigan
 Charles W. Sweet
 Richard E. Terry
 Frank J. Uvena
 Norman Waite
 Brian White
 Edward J. Wong
 Alice Wyatt

LEGAL AID SOCIETY

Zachary T. Fardon, Chair
Latham & Watkins LLP
 Gregory S. Bailey
Skadden Arps Slate Meagher & Flom LLP
 Lester L. Barclay
Barclay Law Group
 Christopher M. Bartoli
Baker & McKenzie LLP
 Tianne Bataille



FAMILY LAW

Provides divorce, custody and support to our clients who meet residential and income poverty levels. Last year, **\$761,394 in yearly child support** was ordered and **\$462,126 was received from orders of settlement.**

Camille E. Bennett
Dentons US LLP

Jeffrey Bruns
Mayer Brown LLP

Richard A. Chesley
DLA Piper

Patrick Collins
Perkins Coie LLP

Muller Davis
Davis Friedman LLP

Michael Emmert
Navigant Consulting

Kelly Fetzer

Jocelyn Francoeur
McDermott, Will & Emery LLP

Angela Frye
Verizon Wireless

Steve Gilford
Proskauer Rose LLP

Stephanie Dodge Gournis
Drinker Biddle & Reath LLP

David F. Graham
Sidley Austin LLP

Bradley C. Graveline
SheppardMullin

Kyle Harvey
Stadheim and Grear

William Heinz
Jenner & Block LLP

Michael C. Kasdin
DLA Piper

Muriel A. Kuhs

Matthew Kutcher
Latham & Watkins LLP

Bradley G. Lane
Brinks Hofer Gilson & Lione

Martin Montes
Exelon

Ryan Murphy
PwC

Rodney Perry
Bryan Cave LLP

Ronald C. Provenzano
Inner Workings, Inc.

Sara Robinson
Adams Street Partners LLC

Michelle Ramirez
Sidley Austin LLP

Michael P. Roche
Winston & Strawn LLP

Lewis Rosenbloom
Rosenbloom Advisors LLC

Gary Skoning
Seyfarth Shaw LLP

Leslie M. Smith
Kirkland & Ellis LLP

Scott C. Solberg
EimerStahl LLP

Douglas Stevens
Aon

Kristofer K. Swanson
PwC

Pamela Taylor
Jones Day

Joleen Willis
JPMorgan Chase Bank

ASSOCIATE BOARD

Daniel Kach, *President*
Invenergy LLC

Jessica Bednarz
Chicago Bar Association

Adam Besand
PwC

Patrick Blum
Curcio Law Offices

Andy Brabender
Brabender & Chiang LLC

Susan Brehm
Sidley Austin LLP

Austin Burke
Barnes & Thornburg LLP

Anthony Coffman

Eliza Davis
Kirkland & Ellis LLP

Adam Dauksas
Scariano, Himes and Petrarca, Chtd

AJ Dixon

Matt Elster
Beermann, Pritikin, Mirabelli, Swerdlove LLP

Sepideh Esmaili Smith
Meckler Bulger Tilson Marick & Pearson LLP

Sarah Harris
Baker & McKenzie LLP

Shaun Hawkinson
McDermott, Will & Emery LLP

Andrew Hettinga
Quarles & Brady LLP

Lauren Horowitz
Navigant Consulting, Inc.

Elizabeth Hutchins

Maris Jager
Rooney, Rippie and Ratnaswamy

Matthew Kutcher

Jonathan Lahn
Kirkland & Ellis LLP

Steve Mahieu
Dykema

Matt McDonald
Mayer Brown LLP

Michelle Miner

Lindsay Morgan
DLA Piper

Brant Newgard
McDermott, Will & Emery LLP

Benton Page
Davis Friedman LLP

Kristen Parks

Angela Petrucci
Accenture LLP

Brittany Pritchett
Legal Aid Society

Katelyn Quimby
Miller Canfield

Vijay Rajagopal
Rosenbloom Advisors LLC

Michelle Ramirez
Sidley Austin LLP

Metzger Scott

Chad Salsbery
TM Financial Forensics, Inc.

Mike Schilling
CBIZ Valuation Group LLC

Brad Schneiderman
Anderson, Rasor & Partners LLP

Steve Schuster
Burke, Warren, MacKay & Serritella P.C.

Mia Segal
Legal Aid Society

Charu Shah
Accenture LLP

Courtney Slovin
The McTigue Financial Group of Northwestern Mutual

Sarah Song
Latham & Watkins LLP

David Tressler
Kirkland & Ellis LLP

Michael Werich
Bryan Cave LLP

Chloe Williams
Legal Aid Society

Bryan Wilson
Kamerlink, Stark, McCormack & Powers LLC

Erin Wilson
O'Connor Family Law

John Wroblewski
Jakubs Wigoda Law

METRO BOARD

Carrie Casper, Co-Chair
Illinois Institute of Technology

Samantha Rosen, Co-Chair
AnimalSense

Joan Cinquegrani
Five Grain Events

Christine Conry
Truven Health Analytics

Charlie Denison

Adams Street Partners

Amanda Graveline

Mike Graveline
PNC Capital Advisors

Steve Hlavin
Nuveen Investments, Inc.

Jeanette Hunter
McDermott Will & Emery

Ashley Joyce
Individual & Family Practice

Adam Kibort
Grund & Leavitt P.C.

Lauren Knuepfer
LK Events LLC

Tyler Lenczuk

Kate Martin
Patton & Ryan LLC

Jason Meador
The Boston Consulting Group

Morgan Moye

Jeff Pajaukas
Grant Thornton LLP

Brian Paladie
Groupon

Rebecca Parker
BMO Harris Bank

Ashley Paro
Engagement Health

Lindsey Rapp
AnimalSense

Bryan Rozum
The Private Bank and Trust Comp

Sophia Ruffolo
BMO Harris Bank

Haviland Rummel
CCS

Ana Serfin-Gil
GolinHarris

Marvin Smith
U.S. Cellular

Margaret Strickland

Cobey Struckmeyer

Erich Struckmeyer
The Chamberlain Group, Inc.

Paul Sutton
Accretive Health

Eloise Tobias
Mayer Brown LLP

Patrick Wallace

Scott Washburn
Winestyr

Annie Welsch
MB Real Estate

Chip Wille

Seth Yohalem
Scandaglia & Ryan

CALUMET COMMUNITY BOARD

Ledall Edwards, Co-Chair
Ruby Larkin, Co-Chair
Rev. Michael Jacobs, Vice Chair
Bettye Baker-Houston
Jennie Betton
Sonja Brisard
Andrea L. Brookins
Jorge Farr-Aguilar
Amelia N. Flowers
Cheryl Freeman Smith
LaToya Huggins
Ola Kirksey
Dr. Ollie Knight
Paris Lewis
Dr. Kimberly Mann
Derrick Taylor
Tanya Terry-Cobbin
LaJewell Thompson
Sharon Thurman
Dominique A. Wallace
Liane Williams
Precious Witherspoon

Associate Board

Pete Gordon
Nadine Harris-Clark
Dr. Joan Hill
Faye Hudson
Shirley Pickett
Rhonda Perdue
Dolores Ruiz-Villalvazo
Leaster J. Robinson-Fonville
Rev. Melody L. Seaton

DUPAGE COMMUNITY BOARD

Eugene Malloy, Chair
Darrin R. Bacon
Thomas Beneventi
Thomas Carmody
Lawrence Carroll
Sharon D'Alessandro
Pete DiCianni
Timothy Elliott
Christine Franco
Robert Gibson
Steven Philip Gonzalez
Honorable Michael Gresk
Scott William Hamer
Thomas Hudock
Congressman Randall
Hultgren
Joseph Imburgia
Judi Jacobs
William Jennrich
Olinda Lemus
Michael Mazza

J.R. McBride
James McSherry
Gregory Meyer
Phyllis Muccianti
Shirley Myers
Frank Pecora
Marcie Peterson
Edward Perez
Jeffrey Platt
Paul Pyrcik, Jr.
Susan Rose
Kimberly Stapleton
Damian Walch
Patrick Whiteside
Leslie Wilson
Ralph Young

EVANSTON/SKOKIE COMMUNITY BOARD

Melinda Stolley, PhD, Chair
Linda Brown Blakley
Susan Carlton
Eugene J. Frett
Judith Greifer
John Haben
Aspasia Apostolakis Miller
Patty Reece
Bart Rocca
Yolanda Suarez Balcazar
Renee Summers
Betsey Cagney Waller
Simon P. Yohanan

MIDWAY COMMUNITY BOARD

Harry Meyer, Chair
Linda Ewing
Christine James
Manny Jimenez
Patricia Jones
Dave Leeney
Nadia Miranda
Vanessa Ortega
Camille Odeh
Rev. Anthony Pizzo, OSA

NORTH COMMUNITY BOARD

George Borovik, Chair
John Alfonso
Adriana Gracia
Anan Gil Garcia
David Lewitas
David Potete
Grant Vitale

SOUTHEAST CHICAGO COMMUNITY BOARD

Maria Elena Vargas, Chair
Jerry Bell, Co-Chair
Marva Adams
Michael Burnside
Alfredo Calixto
Yesenia Carreon
Shirley Carter
Dan Chico
Angela Hurlock
Jennifer Kirmes
Margarita Lopez
David Simpson
Mark Walden

WOMEN'S AUXILIARY BOARD

Pat Alstrin
Cecilia Ambutas
Louise Doyle
CeCe Higgins
Marilyn Karim
Linda Malecki
Reenie Meyer
Anne Samsami

IN-HOME SENIOR RESPITE BOARD

Les Caligiuri
Cathy Johnston
Kathleen Kesselring
Lynne Staley



EMPLOYEE ASSISTANCE NETWORK

1,378 clients from 68 different companies were helped through our Employee Assistance Network. EAN helps clients with challenges such as:

- marital/relational problems
- depression & anxiety
- legal, financial, child care and eldercare concerns





EVENTS

Metropolitan hosts a variety of events focused on the programs, boards and communities we serve. Jazz at the Met, metropolis, DuPage Gala, The Legal Aid Society Luncheon and our year-end Holiday Celebration share our brand and mission with new and existing audiences throughout the year. To learn more visit www.metrofamily.org/events.

ATTENDEES

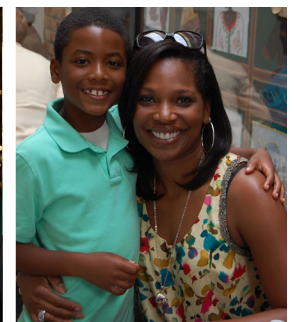
1,855



AMOUNT RAISED

\$1.73

MILLION



EVENT COMMITTEES

HOLIDAY CELEBRATION

W. Kirk James, Chair
Erik D. Barefield
Tony W. Hunter
Merle Goldblatt Cohen
Erin M. Gardiner
Stephen Griesemer
Roger C. Hochschild
Ashley Duchossois Joyce, LCSW
Martha W. Melman
Virginia Johnson Pillman
Barbara Rapp
Sophia Ruffolo
Eileen P. Scudder
David S. Tropp

DUPAGE GALA

William Jennrich, Co-Chair
Kimberly Stapleton, Co-Chair
Larry Carroll
Olinda Lemus
Judi Jacobs
Michael Mazza
Jeffrey Platt

Frank Pecora
Marcie Peterson
Susan Rose
Christine Franco
Leslie Wilson
Joseph Imburgia
Darrin Bacon
Thomas Hudock
Carl Neumann
Theresa Nihill

METROPOLIS

Joan Cinquegrani, Co-Chair
Ashley Paro, Co-Chair
Carrie Casper
Christine Conry
Charlie Denison
Danielle Galanti
Amanda Graveline
Michael D. Graveline
Shane Green
Steve Hlavin
John Holland
Dan Jones

Ashley Duchossois Joyce, LCSW
Adam Kibort
Lauren Knuepfer
Robert C. Knuepfer III
Tyler Lenczuk
Kate Martin
Davida McDaniel Osei
Jason Meador
Morgan Moye
Jeff Pajauskas
Brian Paladie
Rebecca Parker
Lindsay Rapp
Samantha Rosen
Bryan P. Rozum
Sophia Ruffolo
Haviland Rummel
Dan Sandlin
Ana Serafin-Gil
Marvin Smith
Margaret Strickland
Cobey Struckmeyer
Erich Struckmeyer
Jeanette Suarez Hunter

Paul Sutton
Eloise Tobias
Patrick Wallace
Scott Washburn
Adam Waskowski
Annie Welsch
Chip Wille
Seth Yohalem

JAZZ AT THE MET

Jorge Farr- Aguilar, Co-Chair
Derrick Taylor, Co-Chair
Ledall Edwards
Jennie Betton
LaToyia Huggins
Paris Lewis
Rhonda Perdue
LaJewell Thompson
Sharon Thurman
Dominique A. Wallace
Liane Williams

METROPOLITAN HAS MANY NEW INITIATIVES THAT FOCUS ON STAFF AND EMPOWER EMPLOYEES.



LEAN SIX SIGMA

All full-time Metropolitan staff are receiving Lean Six Sigma training which improves organizations by empowering employees to eliminate waste and streamline processes. Lean was chosen for its emphasis on employee-driven change, and because it has a proven record in business, government and not-for-profits.



WELLNESS AND TRAUMA INITIATIVE FOCUS

Metropolitan staff are addressing their health and psychological needs by focusing on strategies at work to improve health and wellness, along with universal trainings, to address compassion fatigue which occurs when staff hear of trauma experienced by clients.



WORKFORCE DEVELOPMENT

In just 3 years, the Workforce Development program has secured jobs for more than 320 participants. The program prepares and places individuals for employment. More than 300 participants have also completed a 20-hour job readiness training course to prepare for the work environment.

Based on employer survey results, the young adults ages 16-24 in the Youth Employment Program:

1 out of 2 placed in positions out-performed compared to other employees in this position.

73% performed as well or better than expected.

OUR FUNDERS AND DONORS

METROPOLITAN FAMILY SERVICES WISHES TO RECOGNIZE THE MANY CORPORATIONS, FOUNDATIONS AND INDIVIDUALS WHOSE FINANCIAL SUPPORT OF THE ANNUAL FUND DURING FISCAL YEAR 2013 HELPED US TO SUPPORT AND STRENGTHEN THOUSANDS OF FAMILIES THROUGHOUT METROPOLITAN CHICAGO.

GOVERNMENT FUNDERS

Area on Aging/Age Options
Catholic Charities - DuPage
Catholic Charities - Joliet
Chicago Board of Education
Chicago Cook Workforce Partnership - WIA
Chicago Department of Family and Support Services
Chicago Department of Housing and Economic Development
Chicago Department of Public Health
Chicago Housing Authority
Chicago State University
City of Elmhurst
City of Evanston
City of Lemont
Cook County
DuPage Community Clinic
DuPage County
DuPage County Board
DuPage County Human Services
Elmhurst Unit District #205
Illinois Attorney General
Illinois Department of Children and Family Services
Illinois Department of Commerce and Economic Opportunity
Illinois Criminal Justice Information Authority
Illinois Department HealthCare & Family Service
Illinois Department on Aging
Illinois Department of Human Services
Illinois State Board of Education
Illinois Violence Prevention Authority
Naperville Human Services
Niles Township
Southwest Youth Collaborative

US Department of Education
US Department of Health & Human Services
US Department of Justice
Village of Orland Park
Woodridge School District 68

FOUNDATION, ORGANIZATION AND CORPORATE DONORS \$100,000 AND ABOVE

The Chicago Bar Foundation
The Chicago Community Trust
Illinois Children's Healthcare Foundation
Kirkland & Ellis Foundation
Lawyers Trust Fund of Illinois
Local Initiatives Support Corporation
McCormick Foundation
United Way of Metropolitan Chicago Impact Fund, a fund of the McCormick Foundation

\$50,000 TO \$99,999

Anonymous
Bank of America
Nathan and Emily S. Blum Fund
The Crown Family
DuPage Community Foundation
JPMorgan Chase Foundation
Polk Bros. Foundation
Sidley Austin LLP

\$25,000 TO \$49,999

Abbott Laboratories
Baker & McKenzie
BMO Harris Bank and Harris myCFO™
The Boeing Company
Charter One
The Chicago Tribune
Chicago Tribune Charities, a fund of the McCormick Foundation
Citi Foundation
ComEd, An Exelon Company

The Duchossois Family Foundation
Equal Justice Works
Finnegan Family Foundation
Julius Frankel Foundation
Hub International Limited
Bowman C. Lingle Trust
Mesirow Financial
Mid American Group, Inc.
North Suburban Healthcare Foundation
The Northern Trust Company
Nuveen Investments, Inc.
Reade Industrial Fund
U.S. Cellular
UBS Financial Services Inc.

\$10,000 TO \$24,999

Adams Street Partners
Allstate Insurance Company
ASGK Public Strategies, LLC
The Bersted Foundation
Brinks Hofer Gilson & Lione
Chicago Blackhawks
Chicago Jobs Council
Chicago White Sox
Community Fund, a fund of the McCormick Foundation
Seymour A. Cohen Family Foundation
Communityworks Endowment Fund
Convergence Acceleration Solutions
Cubs Care, a fund of the McCormick Foundation
Deloitte LLP
Discover Financial Services
Foley & Lardner LLP
Hanover Insurance Group
Henrietta Lange Burk Fund
HopeLine-Mid West
Illinois Bar Foundation
Illinois Tool Works Foundation
Insurance Industry Charitable Foundation Inc.
ITW
Jones Day
Katten Muchin Rosenman LLP
Kirkpatrick Family Charitable Foundation Trust
KPMG LLP
Latham & Watkins LLP
Sheldon L. & Pearl Leibowitz Foundation
Max Goldenberg Foundation
NorthShore University HealthSystem
People's Gas Light and Coke Co.
PNC Bank

PricewaterhouseCoopers, LLP
Prince Charitable Trusts
Proskauer Rose LLP
St. Paul's Community Church
Village Treasure House
W. F. Foundation
WGN Radio 720 Neediest Kids Fund, a fund of the McCormick Foundation
Wheaton Family Service League
Winston & Strawn LLP
Zurich American Insurance Co.

\$5,000 TO \$9,999

ABC 7 Chicago
Amdocs
Applied Systems
Ariel Investments, LLC
Blue Cross Blue Shield of Illinois
Bryan Cave LLP
Burke Warren MacKay & Serritella, P.C.
CNA Foundation
Comcast Cable
Crowe Horwath
Dr. Scholl Foundation
Eimer Stahl LLP
Exelon
Fifth Third Bank
Friedman Properties, Ltd.
Heitman
Henry Crown and Company
IBM Corporation
Jay Johnson Charitable Trust
Jones Lang LaSalle
Liberty Mutual Group Inc.
Macquarie Capital (USA) Inc.
Make It Better LLC
Audrey and Glenn Mensching Fund
Nicor Gas
The PrivateBank
Public Interest Law Initiative
Daniel F. and Ada L. Rice Foundation
B. T. Rocca, Jr. Foundation
Skadden, Arps, Slate, Meagher & Flom LLP
Sodexo, Inc.
Roger and Susan Stone Family Foundation
Telephone & Data Systems
Vegetable Juices, Inc.
Ventas Charitable Foundation
Village of Glen Ellyn
The Webb Foundation
\$2,500 TO \$4,999
Accutest Laboratories
ACE American Insurance Co.
Aon Hewitt

Apollo Group
 Barnes & Thornburg LLP
 Beazley USA
 Cadence Health Foundation
 Chubb Insurance
 Citizens Bank
 Clifton Larson Allen LLP
 Community Bank of Wheaton
 and Glen Ellyn
 Dentons
 Ernst & Young LLP
 Fireman's Fund Insurance
 Companies
 First Bank & Trust
 Galmont Consulting
 Glen Ellyn Family Service League
 The Hartford
 Hispanic Heritage Foundation
 Ironshore Management Inc.
 JBT Capital, Inc.
 Jenner & Block LLP
 Littler Mendelson Foundation, Inc.
 The Lowe Group Chicago Inc.
 Mayer Brown LLP
 MB Charitable Foundation
 McGladrey LLP
 National Philanthropic Trust
 Navigant Consulting, Inc.
 Newmark Grubb Knight Frank
 Northwestern Memorial
 Foundation
 Perkins Coie LLP

Quarles & Brady LLP
 Reed Smith LLP
 Dr. John A. Ronning & Leila S.
 Ronning Charitable
 Foundation
 Schiff Hardin LLP
 Schwarz Supply Source
 Shaw Fishman Glanz &
 Towbin LLC
 Star Detective & Security
 Agency, Inc.
 Traffic Control & Protection
 Travelers Insurance
 Village of Lincolnwood
 West Suburban Bank
 William Blair & Company
 Woodland Foods LTD
\$1,000 TO \$2,499
 Adams Plastics
 Alsdorf Foundation
 Amwins Group
 Aramark Management
 Services, LP
 Arnstein & Lehr LLP
 Aspen Insurance
 AstraZeneca
 Baskes Family Foundation
 Blomberg Family Charitable
 Trust
 Burns & Wilcox
 Central DuPage Kiwanis Club
 Foundation
 Claim Center Distribution
 Account II
 Colman Family Philanthropic
 Fund
 CRC Insurance Services, Inc.
 Drinker Biddle & Reath LLP
 DuPage Medical Group
 Dykema Gossett PLLC
 Exchange Club of Naperville
 First Bank & Trust - Evanston
 FlexPrint, Inc.
 The Goldblatt Family Foundation
 Goldman, Sachs & Co.
 Norman W. Harris Reserve Fund
 Holland & Knight LLP
 Jewel-Osco
 The Kenrich Group LLC
 Kindlon Enterprises, Inc.
 Lisle Savings Bank
 Law Office of Michael P. Mazza
 McDermott Will & Emery
 The Monarch Awards
 Foundation, Inc.
 Oberweis Asset Management
 and The Oberweis Funds
 Palos Park Presbyterian
 Community Church

Pattishall, McAuliffe, Newbury,
 Hilliard, & Geraldson LLP
 Pritzker Traubert Family
 Foundation
 Rathje & Woodward, LLC
 The Reichert Foundation
 Robinwood Consulting
 State Farm Insurance
 Storino, Ramello & Durkin
 Taylor & Malone
 Management, Inc.
 TM Financial Forensics
 Wheaton Bank & Trust Co.
 WTAS LLC
\$500 TO \$999
 A-1 Airport Limousine Service, Inc.
 Anderson Pest Solutions
 Azteca Foods, Inc.
 Baxter International Inc.
 Bennett & Brosseau Roofing, Inc.
 BookKeeping Express, Chicago
 BP Fabric of America Fund
 Brookins Funeral Home
 Capitol Glass & Architectural
 Metals, Inc.
 City Colleges of Chicago
 DePaul MBA Student
 Association
 Dorothy Sutton Branch
 Head Start
 Edwards Fashions Unlimited
 Flowers Communications
 Group
 Michelle Gonzalez &
 Associates, P.C.
 Grant Thornton LLP
 HallStar Company
 Hilton Worldwide
 Holland & Knight Charitable
 Foundation, Inc.
 Hyatt Hotels Corp.
 Ice Family Foundation
 Kids First Pediatric Partners
 Joseph and Helen Komarek
 Foundation
 MCAH Ltd.
 McGaw YMCA
 Midwest Mechanical
 Naperville Noon Lions
 Foundation
 North Park University
 Northminster Presbyterian
 Church
 Roseland Community Hospital
 Rotary Club of Skokie Valley
 Rotary Club of Woodridge
 Seaway National Bank

Sheppard Mullin Richter &
 Hampton LLP
 St. Michael's United Church of
 Christ
 Unitarian Church of Evanston
 Vend-Rite MFG.Co.Inc.
 Village of Woodridge
 Liane K. Williams Insurance
 Agency, Inc.
 Wilmette Auto Body Collision
 Victor Zast Trust
\$250 TO \$499
 5T Management
 Eugene S. and Elizabeth D.
 Buino Charitable Foundation
 C.J. Erickson Plumbing Co.
 Cadence Health
 Cataldo Family Enterprises LLC
 Citizens "4" McBride
 Community Chest of Lemont, Inc.
 Elmhurst Afternoon Woman's
 Club
 The First United Methodist
 Church of Glen Ellyn
 Haben Funeral Home &
 Crematory
 Hamill Family Foundation
 Hinshaw & Culbertson LLP
 Human Resources Management
 Association of Chicago
 Joint Civic Committee of
 Italian Americans Women's
 Division
 Littler Mendelson
 Marinella Ristorante Italiano
 Mix Kitchen, LLC
 North Shore Community
 Bank & Trust Company
 Office Concepts
 Pinski Dermatology &
 Cosmetic Surgery
 Samuel Weinstein Family
 Foundation
 Smith Pachter McWhorter PLC
 The Westin Lombard Yorktown
 Center
 Weston Foundation
 The Wright Connexion
\$100 TO \$249
 Anonymous
 Air Center, Inc.
 Akers Packaging Service
 Group
 Anton-Argires Inc.
 Atomic Mechanical
 Services, Inc.
 BT II Inc.
 Bass Furniture & Rug Co.
 Brad's Tire Service



UPWARD BOUND

Helps at-risk youth graduate from high school and go on to college. Of the students enrolled, **100%** of the graduating seniors have been accepted as first-generation, college-bound students.

SCHOLARSHIPS OF \$972,779

total were awarded to this group of college students



THANK YOU!

Metropolitan Family Services thanks the **Microsoft Corporation** and **U.S. Cellular** for their generosity in making major in-kind technology donations that have greatly improved agency operations.

Contributions include a software donation from Microsoft valued at \$1.27 million, which provided a complete desktop and server update to increase the efficiencies and productivity of Metropolitan's approximately 900 on-site and remote users.

In addition, U. S. Cellular donated 250 PCs and 100 laptops, allowing Metropolitan to expand and update hardware used by staff.

These donations are vital in ensuring that Metropolitan is able to operate effectively while continuing to **empower families to earn, to learn, to heal and to thrive.**

For individuals or organizations who may wish to make future technology contributions to the agency, please contact Tom Remakel, Vice President, Information Management Systems, at 312-986-4304 or remakelt@metrofamily.org.



6,449

clients gained access to health care

Bramer Animal Hospital
Community of African
American Mental Health
Professionals
Daniels Printing & Office Supply
Dengeos, Inc.
Diageo Customer Marketing
Diageo Procurement
Dipanvir Inc. IV
Emages, Inc.
Environmental Systems Design, Inc.
Fennell Electric, Inc.
Flint Financial Services Ltd.
Gilead Behavioral Health Inc.
Golden Fish Inc.
The Horton Group
JAB Management, LLC
Joanne Krajci Insurance
Agency Inc.
M & G Management
MacFund
McDonald's
Mica World, Ltd.
Mission Plus Strategy
Consulting
Network for Good
Oklahoma Bar Association
Pi Nu Chapter Alpha Kappa
Alpha Sorority
Push Design inc.
Roseland Pullman Kensington
Human Relations Council
Rosenbloom Advisors, LLC
Scott Enterprises
Law Office of Keith L. Spence
Spidel Burnfin LLC
TOP MEDIA TALENT
Union Church of Hinsdale
United Way of Delaware
Urban Wildlife Response, Inc.
Van Bruggen Signs
Wells Mechanical
Wentworth Tire Service
Derrick A. Williams Insurance
Agency, Inc.
Yoga by Degrees

CORPORATE, FOUNDATION AND LAW FIRM MATCHING GIFTS

Adams Street Partners
Allstate
Aon Foundation
Automatic Mechanical
Services, Inc.
Bank of America
The Boston Consulting Group
BMO Harris Bank
CB Richard Ellis Inc. Foundation

The Chicago Tribune
Citizens Financial Group
Goldman, Sachs & Co.
McCormick Foundation
Microsoft
Nuveen Investments, Inc.
PepsiCo
PNC Capital Advisors
RLI Corporation
TE Connectivity
U.S. Cellular

INDIVIDUAL DONORS

\$100,000 AND ABOVE

Anonymous (2)

\$50,000 TO \$99,999

Mrs. Karen Crotty
Mr. Lawrence Howe
Richard and Martha Melman
Ms. Barbara Rapp

\$25,000 TO \$49,999

Mr. C. Gary Gerst
Mr. and Mrs. Michael and
Ashley Joyce
Mr. and Mrs. Michael L. Keiser
Mr. and Mrs. George and
Phyllis Muccianti
Mr. and Mrs. Peyton H. Owen, Jr.
Mr. Bruce White

\$10,000 TO \$24,999

Mr. John A. Canning, Jr.
Mr. Piyush Chaudhari
Mrs. Merle G. Cohen
Ms. Martha Delgado and
Mr. Saumya Nandi
Mr. and Mrs. Craig J.
Duchossois
Mr. and Mrs. Timothy Earle
Mr. Wade Fetzer
Michael and Valerie Foradas
Mr. Steven R. Gilford
Mr. David F. Graham
Ms. Julie Q. Harmon
Mrs. Nancy Hughes
Mr. Tony W. Hunter
Mr. and Mrs. Dominic Imburgia, Sr.
Mr. Thomas R. Kolder
Mr. John V. N. McClure
Mr. Steve Patton
Mr. and Mrs. Michael Perlow
Mr. and Mrs. Alan E. Peterson
Virginia Johnson Pillman and
Stanley M. Pillman
Mr. and Mrs. Richard Price
John W. and Jeanne M. Rowe
Ms. Eileen P. Scudder
Mr. Michael J. Silverstein
Mr. Scott C. Solberg

Donna, David, and Julia Tropp
Mrs. Lynn S. Turner
Michael and Lori Vardas

\$5,000 TO \$9,999

Anonymous
Ms. Maree G. Bullock
Mrs. Erica F. Canzona
Darden and Rob Carr
Mrs. Julia A. Cloud
Ms. Jennifer Comparoni
John and Jan Cregier
Ms. Kimberly Duchossois
Pete and Christina Fawcett
Ms. Anita Frazier
Albert and Suzanne Friedman
Mr. C. Graham S. Gerst
Mr. Roger Hochschild
Karen and Tom Howell
Mr. and Mrs. Joseph Imburgia
Mr. W. Kirk James
Mr. L. Bates Lea
Mr. John L. MacCarthy
Bruce, Jeanne, and A.J. Marcus
Mr. R.J. Melman
Mr. and Mrs. Todd D. Menenberg
Mr. and Mrs. Philip J. Neri
Mr. and Mrs. William A. Osborn
Mr. Frank M. Pecora
Mr. Mark A. Peterson and Mrs.
Marcella A. Peterson
Ms. Leslie M. Smith
Mr. Byron O. Spruell
Mr. Bill Stephen
Ms. Deb Stephen
The Struckmeyer Family
Mr. James E. Thompson

\$2,500 TO \$4,999

The Ruth N. Barber CLAT
Mr. Erik D. Barefield
Mr. and Mrs. Kevin J. Brown
Ms. Patricia M. Conway and
Mr. Robert M. Diamant
Mr. Marcus Cooper
Ricardo Estrada and Beatriz
Ponce de Leon
Mr. Zachary T. Fardon
Mr. Marty Foster
Ms. Kristine Martz Givens
Mr. Michael D. Graveline
Mr. Wallace W. Harris, Jr.
Mr. William D. Heinz
Mr. Manny Hernandez
Mr. Steve Hlavin
Mr. Bruce Jacobs and Mrs.
Judi Jacobs
Mr. and Mrs. Thomas Joyce
Mr. and Mrs. Richard Kirsch
Mr. Ronald D. Kropp
Mr. and Mrs. Randy Kuhn

Mr. Matthew Kutcher and Ms. Rebecca Richards
 Mr. Kevin Lantry
 Mr. and Mrs. Michael G. Lombard
 Mr. and Mrs. Jason Meador
 Mr. and Mrs. Bob Navarre
 David and Suzu Neithercut
 Mr. and Mrs. Jeffrey R. Platt
 Ms. Lindsay Rapp
 Mr. Raymond Rarey
 Mr. Tom Remakel
 Allen A. Rodriguez and Olinda L. Lemus and Family
 Ms. Sophia Ruffolo
 Ms. Kathleen K. Rummel
 Mrs. Laurie F. Shults
 Mr. and Mrs. Robert Sullivan
 Mr. and Mrs. Douglas G. Wilding
 Ms. Joleen Willis

\$1,000 TO \$2,499
 Mr. Bill Adee
 Mr. and Mrs. Alexander C. Allison
 Mr. John Amboian and Mrs. Ann L. Amboian
 Mr. and Mrs. Michael Arkes
 Mr. Peter Arts
 Mr. and Mrs. Stuart J. Babendir
 Mr. Gregory S. Bailey
 Mr. Jim Barney
 Mr. Christopher M. Bartoli
 Mr. and Mrs. Tom Beneventi
 Mr. Tobias Bishop and Rev. Kevin Downer
 Ms. Therese M. Bobek
 Mr. Charles B. Boehrer
 Mr. and Mrs. Peter Breen
 Mr. and Mrs. Keith D. Bronstein
 Mr. and Mrs. Thomas L. Brown
 Mrs. Becky Brubaker
 Mr. and Mrs. Lyle G. Bruce
 Mr. Jeffrey Bruns
 Carol and Tom Butler
 Mr. and Mrs. Pat Canning
 Ms. Susan H. Carlton
 Mr. and Mrs. Vince Casanova
 Mrs. Carrie Casper
 Ms. Julie Chavez
 Mr. Richard A. Chesley
 Mr. and Mrs. Joel Chestler
 Joan and Patrick Cinquegrani
 G. Dennis Conroy
 Mr. Stanton R. Cook
 Mr. and Mrs. Domenick D'Alessandro
 Mr. and Mrs. James J. D'Ambrosio, Jr.
 Mr. Muller Davis P.C.
 Mr. Rocco deGrasse

Charlie and Kristen Denison
 Bobbie and Charlie Denison
 Mr. Phil Doherty
 Ms. Mira Dolph
 Mr. and Mrs. Chip Dunn
 Mr. Chas Edelstein
 Mr. Tyrone C. Fahner
 Frank and Molly Fanning
 Mr. Jorge Farr-Aguilar
 Ms. Kelly A. Fetzer
 Mr. Robert Fleck
 Mr. and Mrs. Edward A. Fortino
 Mr. and Mrs. Carlos H. Franco
 Mrs. Rosalinda Gahalla
 Ms. Erin M. Gardiner
 Mr. and Mrs. Brian Gelber
 Mr. and Mrs. Steven P. Gonzalez
 Mr. Scott Goodreau
 Mr. and Mrs. William S. Gray
 Mr. and Mrs. Dominic Green
 Mr. Shane Green
 Mr. Stephen M. Griesemer
 Mr. John W. Haben
 Ms. Kyle L. Harvey
 Ms. Kathy Herbert
 Mr. Timothy J. Heverin
 Mr. Tom Hutchinson
 Mr. and Mrs. Daniel Imburgia
 Mr. Erik Johnson
 Drs. Douglas and Beth Johnson
 Colleen and Jim Jones
 Mr. and Mrs. Dan Kander
 Mr. and Mrs. Melvin Katten
 Mr. and Mrs. Daniel Keefe
 Ms. Maryellen C. Klang
 Mr. and Mrs. Jonathan Klein
 Ollie M. Knight and Melody Seaton
 Ms. Julie K. Knudson
 Ms. Allison Knuepfer
 Ms. Karen Kuenster and Mr. James Osick
 Mr. and Mrs. Walter W. Kurczewski, Esq.
 Mr. and Mrs. Jordan Lamm
 Mr. and Mrs. Bob Lewis
 Mr. and Mrs. Richard C. Lyman
 Mr. and Mrs. Michael Macakanja
 Mr. and Mrs. John P. MacCarthy
 Mr. and Mrs. John Madigan
 Mr. and Mrs. Eugene D. Malloy
 Mr. and Mrs. Glenn M. Mazade
 Mr. and Mrs. Michael Mazza
 Ms. Margaret R. McCarty
 Mr. Mark J. McCarville
 Ms. Marilyn McCoy and Mr. Charles R. Thomas
 Mr. and Mrs. Martin J. McFadden

Mr. Thomas McNulty
 Mr. and Mrs. James F. McSherry
 Greg and Karen Meyer
 Aspasia and Jay Miller
 Sandi and Mike Miller
 Mr. and Mrs. Joseph Molfese
 Mr. and Mrs. Scott Morgan
 Mr. and Mrs. Thomas G. Omundson
 Ms. Diana Palomar
 Mr. Thomas D. Patrick
 Mr. and Mrs. Ari Paxinos
 Mr. Ed Perez
 Mr. and Mrs. Chef Phillips
 Mrs. Carol C. Platt
 Mr. and Mrs. Ronald C. Provenzano
 Mr. and Mrs. Paul P. Pyrcik, Jr.
 Mr. Daniel F. Rahill
 Mr. and Mrs. Steven P. Rand
 Mr. Bart Rocca
 Susan and Robert Rose
 Dr. and Mrs. Scott Rosen
 Ms. Samantha Rosen
 Mr. Lewis Rosenbloom
 Mr. and Mrs. Gary and Lisa Schenkman
 Mr. and Mrs. David M. Schiffman
 Mr. Eric A. Schubert
 Mr. William Schumann
 Mr. and Mrs. Alejandro Silva
 Mr. David Simonson
 Glyn and Marleen Skerrett
 Dr. and Mrs. Terry Smith
 Phil and Liz Smith
 Mrs. Marge Stephen
 Mr. Douglas R. Stevens
 Mr. J. Andrew Stone
 Ms. Pamela Taylor
 Ms. Tanya Terry-Cobbin
 Ms. Jewell Thompson
 Mrs. Nancy Vincent
 Mr. and Mrs. Joseph Vozar
 Mr. and Mrs. Timothy Waldusky
 Mr. and Mrs. Michael Wallace
 Mr. and Mrs. Stephen Wallenfelsz
 Mr. and Mrs. Steve Weiss
 Ms. Anne M. Welsch
 Mr. and Mrs. Bob Weskamp
 The Honorable Bonnie M. Wheaton
 Mr. and Mrs. Thomas R. White
 Mr. and Mrs. Thomas R. Wille
 Mr. and Mrs. John B. Williams
 Mr. and Mrs. Stephen R. Wilson
 Mr. Robert H. Nutt and Ms. Claudia A. Wolf
 Mrs. Alice Wyatt
 Mr. and Mrs. Victor E. Zast

\$500 TO \$999
 Anonymous (3)
 Mr. Brian Augustian
 Mr. and Mrs. Edward K. Banker
 Ms. Sarah F. Barber
 Ms. Tianne Bataille
 Mr. and Mrs. Eric Beatty
 Ms. Camille E. Bennett
 Mrs. Lisa Bigos
 Mr. Marcus E. Boggs
 Mr. and Mrs. Jon Bottorff
 Mr. and Mrs. Timothy L. Burke
 Mr. Jonathan Bushnell
 Mr. and Mrs. Al Butkus
 Mr. and Mrs. Brian M. Callaci
 Mr. and Mrs. Chris Camp
 Mr. and Mrs. Mark Carberry
 Mr. and Mrs. Thomas J. Carmody
 Mr. Kevin D. Clark
 Mr. Patrick Collins
 Mr. Thomas Cox
 Mr. and Mrs. Alan Crane
 Mr. Peter Rogers and Ms. Valerie Crotty
 Mr. Robert E. Curley
 The Honorable and Mrs. Pete DiCianni
 Mr. Christopher J. Doherty and Ms. Jeananne G. Digan
 Mr. Marshall J. Doke, Jr.
 Mr. and Mrs. Jim Dolinar
 Mr. Nick Dudziak
 Mr. and Mrs. Robert Easter
 Mr. and Mrs. H. John Ellis, Jr.
 Mr. and Mrs. Doug Evans
 Mr. and Mrs. Norbert A. Florek
 Ms. Katherine M. Frazier
 Mr. Eugene J. Frett
 Bob and Carrie Gibson
 Dr. and Mrs. Scott Glazer
 Mr. Victor Grimm and Ms. Kathleen Grady
 Mr. and Mrs. Robert J. Greenebaum, Jr.
 Mr. and Mrs. Nicholas Greifer
 Honorable and Mrs. Michael Gresk
 Mr. and Mrs. Jeffrey A. Hackney
 Mr. and Mrs. Scott W. Hamer
 Mr. and Mrs. Dwayne Haskell
 Mr. and Mrs. Michael R. Hassan
 Mr. H. Roderick Heard
 Mr. Robert A. Helman
 Mr. John Hills
 Mr. Mark S. Hoplamazian and Ms. Rachel D. Kohler
 Mr. and Mrs. Thomas E. Hudock
 Ms. Christina E. Hummel
 Ms. Jeanette S. Hunter

ESTABLISH FUTURE GIFTS TO METROPOLITAN FAMILY SERVICES IN YOUR ESTATE PLAN

FAMILY TRUST

The Family Trust recognizes those who have made a special designation in their estate plans for Metropolitan Family Services to receive future gifts. Thank you for demonstrating your commitment to our mission of empowering families.

POTENTIAL BENEFITS INCLUDE:

- Raising current income
- Lowering current income taxes
- Eliminating capital gains taxes
- Lowering or eliminating possible federal estate taxes
- Safeguarding assets for family and loved ones.

TO LEARN MORE CONTACT:

Dennis Conroy,
Senior Vice President, External Affairs
at 312-986-4123 or conroyd@metrofamily.org



FAMILY TRUST MEMBERS

Anonymous
Natalie Anenberg
Patricia Ashbrook
Mrs. Theodore C. Buenger
Robert and Darden Carr
Dennis Conroy
Jennifer Straub Corrigan
& Patrick Corrigan
Emily and John Costigan
Marie and Craig Duetsch
Jan and Jerry Erickson

Robert and Anne Faurot
Bev and Wade Fetzer
Rhona and Julian Frazin
Virginia and Gary Gerst
Julie Hall
Elizabeth Harrington
Jane and Robert Holzkamp
Lawrence Howe
Jerry James and Kitty Bliss
Carol B. Johnson
Arthur O. Kane
Richard L. Jones
Bob Knuepfer

Nancy and Robb
Knuepfer, Jr.
Marcia and Dave Knuepfer
Richard Loewenthal
Anne and Ed Lyman
Nancy Lynn and Andy
Teitelman
John and Lisa McClure
Martha and Richard
Melman
Elisabeth Mueller
Phyllis and Edgar Pearsa
Barbara Petersen

Ginger and Stanley
Pillman
Beth Dovenmuehle
Rothermel
Patrick J. Schauer
Eileen P. Scudder and
Russ Zimmermann
Alfreda Shapere
Laurie and Jim Shults
John Stitzell
James E. Thompson
Donna and David Tropp

Tom Hynes and Carol Jones
 Ms. Constance Iacovetti and
 Mr. John Rapannotti
 Ms. Beatrice James-Moore
 Mr. and Mrs. Tom Jenkins
 Mr. Roger K. Johnson
 Mr. Daniel J. Kach
 Mr. Todd Kaplan and Ms. Katie
 Hazelwood
 Mr. and Mrs. Joseph Karczewski
 Mr. and Mrs. Joseph Kartheiser
 Mr. Michael C. Kasdin
 Mr. Daniel Kazan
 Mr. and Mrs. Ron Kenny
 Pat and Jenny Kernan
 Adam Kibort and Katherine
 Martin
 Ms. Andrea M. Kinnear
 Mr. and Mrs. Joe Kolano
 Mr. Bradley G. Lane
 Ms. Judy Hsu and Mr. Tracy
 Leddy
 Ms. Cheryl A. LeeVan
 Ms. Hannah Levine
 Mr. and Mrs. Matthew Lillegard
 Mr. and Mrs. John Lipinsky
 Mr. and Mrs. Edward W. Lyman, Jr.
 Mr. and Mrs. David Malliband
 Mr. and Mrs. Ross W. Manire
 Mr. Dennis Marx
 Mr. and Mrs. James McAweeney
 Mr. and Mrs. JR McBride
 Mr. Doug McClure
 Mr. and Mrs. Charles B. McKenna
 Ms. Molly Melman
 Mr. Robert J. Henry and Ms.
 Sara Mikuta
 Mr. Martin Montes
 Ms. Dana Morey
 Mr. Ryan Murphy
 Mr. and Mrs. Todd Nash
 Mr. and Mrs. Brian O'Malley
 Mr. Mark Osgood
 Mr. Brian Paladie
 Dr. and Mrs. Robert W. Parsons
 Mr. Rodney Perry
 Ms. Susan Pfeifer
 Mr. J. Todd Phillips
 Mr. and Mrs. Ralph Pike
 Mr. Lee Polk
 Mr. Kevin Pollard
 Ms. Sara A. Robinson
 Professor David S. Ruder
 Mr. and Mrs. Robert E. Sarazen
 Mr. and Mrs. Jack Sayles
 Mr. and Mrs. Nat Sclafani
 Mrs. Pamela A. Shara-Stoppel
 Mr. and Mrs. Dan Shields
 Mr. and Dr. Joseph E. Shipley

Mr. and Mrs. Andy Smith
 Mr. and Mrs. Stephen A. Smith
 Mr. and Mrs. Peter Smolenski
 Mr. Rick K. Spears
 Mr. and Mrs. Bill Stapleton
 Mr. and Mrs. Jon Stapleton
 Mr. Paul Steinwachs
 Ms. Janet Stephen
 Jeffrey and Shawn Strack
 Ms. Melissa M. Suster
 Mr. and Mrs. Art Sutherland
 Myrna and Kristofer Swanson
 Mr. and Mrs. G. G. Taubeneck
 Mr. Tom Thompson
 Mr. Greg Tiemeier
 Mr. and Mrs. Brian Timpone
 Mr. and Mrs. James K. Toohey
 Mr. Scott D. Turban
 Ms. Jan Vitello
 Mr. William Wardrop
 Mr. and Mrs. Todd E. Warnock
 Mr. and Mrs. Albert J. Weber
 Mr. and Mrs. Greg Weiss
 Ms. Adrienne Weiss
 Mr. and Mrs. Tony Will
 Ms. Leslie Wilson
 Mr. and Mrs. Dennis Wilson
 Ms. Debbie K. Wright
 Mr. Rob Wyandt
 Mr. and Mrs. Ray Yambor
 Ms. Lidia P. Yip
 Mr. and Mrs. Phillip Yoder
 Mr. Simon Yohanan
 Mr. and Mrs. Robert Yohanan
 Mr. Jeff Zeiger
\$250 TO \$499
 Anonymous (2)
 Faiz and Shaheen Ahmed
 Mrs. Dayna Anderson
 Mr. and Mrs. Gerard Anderson
 Mrs. Dustin D. Anderson
 Mr. and Mrs. David Anderson
 Mr. and Mrs. Darrin R. Bacon
 Ms. Tasha Baker
 Ms. Bettye Baker-Houston
 Mr. and Mrs. Brad Bensenberg
 Mr. and Mrs. Raymond Blake
 Mr. and Mrs. Philip D. Block III
 Molly and Ben Bradley
 Mr. and Mrs. Charles Brendler
 Mr. and Mrs. John Bretz
 Ms. Janet Siegel Brown
 Ms. Linda Brown Blakley
 Mr. and Mrs. Tyler Bruesewitz
 Kate and Peter Brune
 Mrs. Priscilla Buenger
 Tony Burt and Karin Ruetzel
 Mr. and Mrs. James A. Carter
 Ms. Gina Caruso and Mr.

David Wilson
 Mr. Andrew Challenger
 Mr. and Mrs. Paul Chatalas
 Mr. and Mrs. Ralph Chor
 Ms. Christine Conry
 Mr. Gorman Cook
 Mr. Paul Corty
 Mr. and Mrs. Doug Crimmins
 Mr. and Mrs. Stephen Cummings
 The Honorable Barbara Flynn
 Currie
 Mr. Jason DeJonker
 Ms. Paulette Dodson
 Mr. and Mrs. Harry Drucker
 Mr. Nathan Dykes
 Mr. Joseph Egan
 Mr. and Mrs. John Elia
 Gretchen Elsner-Sommer and
 David William Cohen
 Mr. Victor Elting III
 Mr. and Mrs. Doug Evans
 Dr. Bill Eversman Family
 Mr. Dwight W. Fawcett
 Mr. and Mrs. Mark Feldman
 Mrs. Renate G. Frankenstein
 Mr. and Mrs. Chuck Frankiewicz
 Mr. and Mrs. Daniel Friedman
 Mr. Michael Fries
 Mr. and Mrs. Sidney Frisch, Jr.
 Mr. and Mrs. Kenneth Funk
 Mr. Robert Gerstein
 Mr. and Mrs. Marin N. Gjaja
 Mr. and Mrs. William R. Gladden
 Mr. and Mrs. James J. Glasser
 Mr. Bob Glaves
 Mr. and Mrs. William Goldberg
 Mr. Kenneth Gorman
 Ms. Margaret E. Grinnell
 Edward and Mary Kay Haben
 Mr. and Mrs. Tom Hall
 Ms. Margaret Hansen
 Mr. and Mrs. David Harkavy
 Ms. Sarah Harris
 Ms. Nadine Harris-Clark
 Ms. Kathryn Hayley and
 Mr. Mark Ketelsen
 Mr. James Hennessy
 Mr. Robert T. Isham

Mr. Brett Itterman
 Ms. Maris Jager
 Mr. and Mrs. William Jennrich
 Mrs. Patricia R. Johansen
 Mr. and Mrs. Daniel Johnson
 Richard L. Jones, Ph.D.
 Mr. and Mrs. Michael Kamin
 Mr. and Mrs. Jim Kane
 Mr. Michael Kaplan
 Gerard and Eileen Kelly
 Mr. Donald G. Kempf, Jr.
 Mr. and Mrs. Michael Kenney
 Mrs. Helen P. Kirkpatrick
 Mr. and Mrs. Donald E. Knaus
 Ms. Lauren Knuepfer
 Mr. Brian Kusper
 Mr. and Mrs. Thomas N. Lampert
 Ms. Jean M. Langie
 Ms. Jane Leary
 Mr. Dean Leffelman
 Ms. Maureen C. Lesak
 Ms. Olga Linares
 Mr. William S. Lipsman
 Mr. Richard J. Loewenthal
 Mr. Donald Lyons and Mr.
 Ignacio Valero
 Mr. and Mrs. John Maffei
 Mr. and Mrs. Craig Mangone
 Dr. Kimberly A. Mann
 Mr. Paul C. Marengo and Ms.
 Joan Simmons
 Mr. and Mrs. Merritt R.
 Marquardt
 Mr. Andrew M. Masse
 Ms. Joan McElhattan
 Mr. and Mrs. Paul McHugh
 Mr. and Mrs. John McIndoe
 Mrs. Sue McLinden
 Mr. and Mrs. Ronald A. Melman
 Ms. Vivian Moore
 Mr. and Mrs. Denny Moore
 Deborah and John Muller
 Mr. and Mrs. Thomas O. Myers, Jr.
 Edward and Kathryn Nelson
 Mr. Timothy Newbold and Ms.
 Lisa Yang
 Dennis and Judy Newton
 Theresa and Tom Nihill



YOUNG FATHERS INITIATIVE

For young fathers who have faced educational, financial and legal challenges, this program helps them become employed, financially self-sufficient and raise healthy children. **98% have improved their financial position, and 70% have increased their resources,** monetary and other, to provide for their children in the last 3 years.

Mr. and Mrs. James Pajauskas
 Ms. Anita D. Panagiotis and Mr.
 James C. Ekonomou
 Ms. Rebecca Parker
 Mr. Michael Parks
 Mr. and Mrs. John J. Paro
 Ms. Ashley Paro
 Mr. Paul W. Peppers
 Mr. Kenneth V. Perkins
 Mr. Douglas W. Peterson
 Mr. and Mrs. Nils A. Peterson
 Ms. Angela Petrucci
 Mr. and Mrs. Chuck Pharris
 Mr. and Mrs. Thomas D. Philipsborn
 Mr. and Mrs. Hadley C. Pihl
 Reverend Anthony Pizzo
 Ms. Nicole Poulous
 Mr. and Mrs. Fredric Price
 Mr. Mark Puccio
 Mr. and Mrs. Ronald Pullie
 Ms. Michelle A. Ramirez
 Ms. Kendra Reinshagen and
 Mr. Stephen Aultz
 Mrs. Adriana Reyes-Villanueva
 Larry and Carol Riebold
 Mr. Steve Riley
 Ota and David Roadhouse
 Mr. and Mrs. Tom Rooke
 Dr. Marian Fitzgibbon and Mr.
 Gerard Rose
 Mr. and Mrs. Warner A. Rosenthal
 Mr. and Mrs. Jesse Ruiz
 Ms. Haviland E. Rummel
 Mr. Timothy Ryan
 Mr. Michael Schilling
 Mr. and Mrs. Daniel N.
 Schuchardt

Sumit Sengupta
 Ms. Habeeba Shariff
 Mr. and Mrs. Rich Sieracki
 Mr. and Mrs. Rich Slevin
 Mr. Nicholas A. Smalara
 Mr. and Mrs. Jeffrey P. Smith
 Ms. Laura Smith
 Ms. Audrena Spence
 Ms. Catherine Sreckovich
 Mr. and Mrs. Dan Stanley
 Mr. Carl Staub
 Mr. and Mrs. Denis Stefango
 Mr. and Mrs. Robert C. Stendel
 Mr. and Mrs. John Stitzell
 Dr. Melinda Stolley
 Ms. Kari Struckmeyer
 Mr. and Mrs. John Stumme
 Mrs. Yolanda Suarez-Balcazar
 Mr. Paul Sutton
 Ms. Diane Thomas-Levy
 Mr. and Mrs. Christopher Thrall
 Dr. Marie C. Thursby
 Mr. and Mrs. Thomas V. Tregenza
 Ms. Peggy Tschetter
 Mr. Austin Turban
 Mr. and Mrs. Donald Ursin
 Mr. and Mrs. Anton R. Valukas
 Ms. Debra Walker
 Michael and Betsy Waller
 Mr. and Mrs. Earl Webb
 Ms. Angie Weis
 Mr. Gary Welch
 Mr. and Mrs. Kevin White
 Mr. and Mrs. Patrick Whiteside
 Mr. and Mrs. Scott Wick
 Ms. Denise Wong
 Jill and Dan Zifkin
 Mr. Corey D. Zimmerman and
 Ms. Gayle Arlen

\$100 TO \$249

Anonymous
 Dr. Haas Adamji and Ms. Mary
 Daley
 Mrs. June B. Adams
 Ms. Susan S. Adler
 Mr. Haven Allen
 Mr. and Mrs. James Allen
 Mr. and Mrs. Thomas D. Allen
 Mr. and Mrs. Howard Alper
 Mr. Allan L. Alson and Ms. Sue
 Ann Glaser
 Mr. and Mrs. Howard Alt
 Mr. and Mrs. Derek Andersen
 Mr. Kurt Anderson
 Ms. Nancy E. Anderson and Mr.
 Robert C. Krause
 Mr. and Mrs. Dustin D. Anderson
 Mr. and Mrs. Glenn W.
 Anderson, Jr.

Mr. and Mrs. Gordon Aspin
 Ms. Karina Ayala-Bermejo
 Ms. Mary M. Bahry
 Mr. and Mrs. Wynn Bailey
 Mr. and Mrs. Christopher B. Baker
 Ms. Bridget Barham
 Mr. Bruce Beatus
 Mr. and Mrs. Louis J. Bedell
 Mr. and Mrs. Michael G.
 Beemer
 Ms. Wanda Bell
 Ms. Nellie L. Bell
 Ms. Brenda J. Bell
 Ms. Debbie Berman
 Dr. and Mrs. Ira J. Bernstein
 Mr. Brad Blakemore
 Ms. Alison Blonn
 Mr. and Mrs. Michael Boccio
 Ms. Lisa Bolden
 Mrs. Valarie Bomar
 Chris and Joan Bowers
 Mr. and Mrs. Charles A. Bowsher
 Mr. and Mrs. Edward J. Bradley
 Mr. and Mrs. Earl Brady
 Mr. Neal Brady and Ms.
 Theresa Quattrocci
 Mr. Bruce Braun
 Ms. Sara E. Brewster
 Mr. and Mrs. Charles A. Brown
 Mr. and Mrs. Scott Brown
 Ms. Verna Burns
 Dr. Diane Butterfield and Mr.
 Mark Flessner
 Mr. Osvaldo Caballero
 Mr. James J. Callen
 Mr. Colin Campbell
 Mrs. Nora Moreno Cargie and
 Mr. Robert F. Cargie
 Mr. and Mrs. James G. Carr
 Mrs. Guadalupe Carranza
 Mr. and Mrs. Larry Carroll
 Ms. Carolyn S. Cates
 Ms. Marcia Caulkins
 Mr. Ramon Cepeda
 Mr. and Mrs. Joseph M. Cervone
 Mrs. Alexis Chardon
 Mr. and Mrs. Joshua E. Chernoff
 Mr. Howard Cheskin
 Ms. Julie Clausing
 Mr. Willie Cochran
 Mr. and Mrs. John J. Coffey III
 Mr. and Mrs. Robert P. Coffin
 Dr. Heather Colburn
 Ms. Janice Collier
 Mr. and Mrs. Shane Colton
 Mr. and Mrs. Dan Coman
 Ms. Margaret Concannon
 Mr. and Mrs. Dave Conrad
 Mr. and Mrs. John W. Cook, Jr.

Dr. and Mrs. David Cooke
 Ms. Judy Corrigan
 Mr. Andre Cosey
 Ms. Nancy Costello
 Mr. William J. Cotter
 Ms. Danielle Courier
 Mr. Robert Cox
 Mr. Timothy S. Crane
 Mr. Ron Culp
 Ms. Nancy Cuniff and Dr.
 Alan M. Zunamon
 Mr. and Mrs. Ronald C. Davidson
 Ms. Patricia E. Davisson
 Ms. Whitney Dawson and Mr.
 Paul Sutton
 Mr. and Mrs. Robert R. Deist
 Mr. Robert O. Delaney
 Ms. Deborah Deters Manning
 Ms. Rita Dever
 Ms. Kimberly A. Devries
 Mr. Jim Dickens
 Mr. and Mrs. Donald Dixon
 Mr. and Mrs. Dave Dolnics
 Mr. and Mrs. Joe Donado
 Mr. and Mrs. Dennis Donati
 Mr. and Mrs. Alexander Doolas
 Mr. and Mrs. Alan Dorrian
 Mr. and Mrs. Hank Doyle
 Mr. and Mrs. Andrew C.
 Dragonetti
 Mr. Ryan Dubiel
 Mr. and Mrs. Richard L.
 Duchossois
 Mr. Thomas A. Ducker
 Mrs. Carrie A. Durkin
 Mr. Robert Dwyer and Ms. Ellen
 Smucker
 Mr. and Mrs. Rob Ehioba
 Mr. David P. Eller
 Mr. Timothy Elliott
 Ms. Barbara Ellson and Rev.
 Frank C. Baldwin
 Ms. Judy Elmer
 Mr. and Mrs. Nathan Elwell
 Mr. A. Gerald Erickson
 Ms. Robin A. Erickson
 Mr. and Mrs. Joseph V. Farago
 Ms. Elizabeth Fiden
 Mr. Paul Fields
 Mrs. Amelia Flowers
 Mr. and Mrs. Terry Franke
 Rhona and Julian Frazin
 Mrs. Nina Gafni
 Ms. Kenosha Gamble
 Mr. and Mrs. Dan Garhan
 Mr. and Mrs. William F. Geiger
 Ms. Susanne K. Glink
 Mr. Steven Goldsher
 Mr. Charles Gordon



ADOPTION PRESERVATION

Our Adoption Preservation program provides home-based intervention to families formed through adoption or guardianship whose children have emotional and trauma issues. **722** of those we serve were kept in their adoptive homes, equal to

99.9%

Mr. Donald Goschy	Mr. and Mrs. Joe Keitel	Mr. and Mrs. Charles McCarthy	Mrs. Barbara Petersen
Dr. and Reverend Numa R. Gottardi-Littell	Ms. Rachael L. Kemnic	Mrs. Christine McCooley	Mr. and Mrs. Jay Peterson
Mr. and Mrs. Richard Gould	Dr. Christopher B. Keys and Dr. Elizabeth J. Keys	Mr. Matt McDonald	Mr. Patrick Peterson
Ms. Amanda Graveline	Ms. Maryia Khanevich	Mr. and Mrs. John McGuire	Mr. and Mrs. Petrillo
Mr. Howard Greenberg	Mrs. Deborah Kieckhafer	Mr. Peter McGuire	Ms. Debbie Pfuntner
Ms. Kim Greene	Mr. and Mrs. Jonathan M. Kigner	Ms. Rachael McLean	Mr. and Mrs. David Pilotto
Mr. and Mrs. Benjamin Greene	Mr. and Mrs. Patrick J. Killman	Mr. Leon McMillan	Mr. Steve Plotkin and Mrs. Helene Zimmerman Plotkin
Mr. and Mrs. Eugene F. Griffin	Mr. Mark King	Ms. Patricia McPhearson Davis	Mr. Jeff Poe
Mr. and Mrs. Ronald Grzywinski	Mr. Blake Kirkman	John and Linnea Mead	Mr. Max Polan
Mr. and Mrs. Giovanni Gullo	Mr. and Mrs. Thomas Klier	Ms. Margaret Meilahn	Mr. Mark Pollack
Mrs. Barbara Haben	Ms. Kathleen A. Klute	Mr. and Mrs. Eddie Michaels	Mr. Scott Pompe
Ms. Cindy S. Haddon	Mr. and Mrs. David A. Knudson	Mr. and Mrs. Michael L. Milani	Ms. Mindy J. Ponton
Mr. Brandon Ham	Mr. Joseph J. Knuepfer	Mr. Jon Milonas	Mr. and Mrs. Michael A. Pope
Mr. and Mrs. John Hammerschlag	Jan Kodner and Roberta Levin	Ms. Chekisha Mitchell	Mr. and Mrs. Lewey Popoff
Mr. and Mrs. James H. Harms	Ms. Christine Kokoruda and Mr. Rocco deGrasse	Mr. and Mrs. Randy Mohler	Mr. and Mrs. Jim Porter
Mr. and Mrs. Jeff Harris	Mr. Michael Krapf	Mr. Frank Molinaro	Mr. and Mrs. Gregory S. Porwancher
Dr. Aimee Harris-Newon	Lynn and Kay Krause	Mr. J. Clifford Moos	Mr. and Mrs. John F. Powell
Ms. Stacey Hasenbalg	Mr. Michael Krause	Mr. and Mrs. Dana Morey	Mr. and Mrs. Joel Pundmann
Mr. Shaun Hawkinson	Mr. and Mrs. Jeff Kremin	Mr. Steve Morley	Ms. Mary Raleigh and Mr. Edward McGillen
Ms. Susan Hayes	Mr. Brett Kroner	Mr. Ken J. Mularski and Ms. Barbara Putta	Mr. and Mrs. Guy Ranalo
Mr. Chase Haynes	Mr. and Mrs. Gilbert Krulee	Kimberly and Mike Mulcahy	Mr. and Mrs. Ravi Randhava
Miss Ruth J. Hess	Mr. Adam Kubina	Ms. Margaret Murphy-Webb	Ms. Mari Kaye Rath
Mr. and Mrs. Andrew Hettinga	Mrs. Muriel A. Kuhs	Ms. Mary M. Murray	Ms. Susan Razzano
Dr. Joan M. Hill	Mr. Jonathan Lahn	Mr. Gerald F. Murray	Mr. and Mrs. Hugh E. Reams, Jr.
Mr. and Mrs. Stephen Hill	Ms. Ruby L. Larkin	Ms. Catherine Napier	Mrs. Patricia Reece
Mr. and Mrs. James P. Hofner	Ms. Carol LaRue	Mr. and Mrs. William F. Napleton	Mr. Sergio Rego
Mr. and Mrs. Bill Hogan	Mr. and Mrs. William J. Lawlor III	Mr. and Mrs. Richard Naski	Mr. and Mrs. David Rendall
Ms. Dorothy B. Holley	Mr. Joseph Learner	Mr. Mark Naumann	Ms. Katherine A. Rendall
Mr. and Mrs. Phillip H. Holm	Reverend Walt and Carol Ledogar	Mr. and Mrs. William Nemchock	Mr. and Mrs. William Revelle
Ms. Leah Hope	Leslie and Paul Lehner	Mr. Carl Neumann	Ms. Anne-Marie Rhodes
Mrs. Nancy M. Hotchkiss	Ms. Sandy Leon	Brant and Grace Newgard	Mr. and Mrs. William R. Richards
Ms. Grace Hou	Mr. and Mrs. John G. Levi	Mr. and Mrs. Art Newman	Ms. Tricia Riedl
Bob and Irma Hubbard	Mr. Paris Lewis	Ms. Victoria Noonan	Onie Riley
Mr. Martin Hughes	Mr. Peter Lewis	Ms. Joanne Noonan	Ms. Liz Robertson
Mr. and Mrs. Matt Hunt	Mr. Andreas M. Liewald	Mr. and Mrs. Randy H. Norton	Mr. and Mrs. Joseph J. Robertson
Mr. and Mrs. Jim Hutchinson	Mr. Rusty Lingenfelter	Ms. Renate P. Norum	Ms. Colleen Rohan
Mr. and Mrs. Tony Iacuzzi	Mrs. Barbara F. Link	Mr. Matt Nowlin	Mr. and Mrs. Joseph R.V. Romano
Mr. and Mrs. Dominic I. Imburgia, Jr.	Mr. and Mrs. David Love	Mr. Patrick O'Brill	Mr. and Mrs. Stuart Rosenberg
Mr. Thomas Jackson	Mr. Bruce Lubin	Mr. and Mrs. Dick Olsen	Mr. Jerrold Rosenwasser
Reverend Michael D. Jacobs	Mr. and Mrs. Donald Lucarelli	Ms. Tricia O'Neill	Mr. and Mrs. Ron Roulo
Mr. and Mrs. Carl B. Jacobs	Mr. Daniel Lynch	Mr. Norbert Ortiz	Mr. Scott Rouzer
Mr. and Mrs. Joel H. Jastromb	Ms. Nancy Lynn and Mr. Andrew Teitelman	Ms. Davida Osei	Ms. Thomasina M. Royston
Mr. and Mrs. Pran Jha	Mr. Chuck Macke	Mr. Shawn O'Toole	Ms. Barbara A. Rutherford
Ms. Annette Johnson	Mr. and Mrs. Chris MacRitchie	Ms. Laura Hohnhold and Mr. Andy Otting	Ms. Doris Salomon
Ms. Françoise H. Johnson	Mr. and Mrs. Martin P. Madden	Mr. Gary Owen	Ms. Virginia E. Samples-McGhee
Ms. Carol B. Johnson	Mr. Steve Mahieu	Ms. Norma Pagan	Mr. and Mrs. Tim Sander
Ms. Ann Johnson	Ms. Marion Malloy	Mr. Ben Page	Mr. and Mrs. John Sayles
Mr. and Mrs. J. Robert Jolly	Mr. and Mrs. George P. Maltezos	Ms. Stacey Paicely	Mr. Thomas Schager
Mr. and Mrs. Phil Jordan	Mr. and Mrs. Sheldon Mann	Mrs. Barbara N. Pape	Mr. Jason M. Schaldecker
Ms. Juliana Hackel and Mr. Chuck Judd	Mrs. Betty J. Marks	Moselean Parker	Mr. Michael D. Schnur and Ms. Janice J. Liten
Ms. Helen Kaminski	Mr. Danny Marks	Mr. Stanley J. Parzen	Ms. Amanda Schumacher
Robert and Karol Karlblom	Mr. Peter F. Maronge	Ms. Tonja Pastorelle	Mr. Steve Schuster
Ms. Mariola Kasper	Mr. and Mrs. James H. Maxey	Mr. and Mrs. Norman J. Patinkin	Mr. Steven Schwartz
Ms. Marina R. Katovich	Mr. and Mrs. Frank D. Mayer, Jr.	Mr. and Mrs. Lyle Patterson	Mrs. Laurie Sedio
Mr. Jim Kauffman and Ms. Mary Anne Diehl	Ms. Julie McBratney	Ms. Jannie Pearson	
		Ms. Rebecca Perry	

Ms. Diana Rich Segal
 Ms. Mia K. Segal
 Mr. and Mrs. James V. Segal
 Ms. Alfreda Shapere
 Mr. and Mrs. Andy Shaw
 Mrs. Mickey Shaw
 Mr. David A. Shaw and Ms.
 Janice K. Becker
 Mrs. Jill Shiner
 Mr. Christopher Shoup
 Andrew and Mary Lou Skalkos
 Mr. Gerald D. Skoning
 Mr. Mark Slaby
 The Slowinski Family
 Ms. Elaine Smith
 Ms. Laura Smith

Mr. and Mrs. Charles L. Smith
 Mr. Steven Smyser
 Ms. Carol Snyder
 Ms. Stacy L. Sochacki
 Robert and Julie Soule
 Mr. and Mrs. Michael Sowka
 Mr. and Mrs. Jim Spangler
 Mr. and Mrs. Harlan Stanley
 Ms. Pamela Stennes
 Ms. Virginia Stephen
 Mr. Gary Stern
 Mr. and Mrs. Andrew Stinson
 Ms. Alison Shapiro and Mr.
 Scott Stoolmaker
 Mr. and Mrs. Robert J. Stracks
 Ms. Ashley Stuart
 Renee and Frank Summers
 Mr. and Mrs. Anthony Surma
 Ms. Wanda Sutherland
 Mr. and Mrs. Donald M.
 Svendsen
 Mr. and Mrs. Steven M. Swanson
 Mr. and Mrs. Tom Tague
 Ms. Claudine Tambuatco
 Ms. Sara Taylor
 Mrs. Donna Taylor
 Mr. Lou Tazioli
 Mr. and Mrs. Don Theobald
 Mr. and Mrs. Richard K. Thomas
 Mr. Mark V. Tillman
 Mrs. Joseph W. Tinaglia
 Ms. Eloise Tobias
 Ms. Judith M. Toenings
 Ms. Edie Tracer
 Mr. Homero Tristan
 Mr. John Tschantz
 Mr. Mac Tully
 Mr. and Mrs. Andrew Turcich
 Ms. Pat Turnbull
 Dr. Richard Tye
 Mr. Carl L. Vacketta
 Mr. Hans Van Overbeek
 Mrs. Maria E. Vargas
 Ms. Bridget M. Vaughn
 Ms. Dana Vega
 Mr. and Mrs. Renato Velasquez
 Ms. Kaitlin Verber
 Mr. Robert Verigan
 Mr. Mark Wachowicz
 Ms. Jennifer Wagner
 Mr. Patrick Wallace
 Ms. Jessica M. Waller
 Mr. Ryan Walsh
 Mr. and Mrs. John Ward
 Mr. and Mrs. Robert Wattel
 Mr. Michael Weaver
 Mr. Joseph M. Weil
 Mr. and Mrs. Gary Weitman
 Mr. and Mrs. Martin Whitfield

Mrs. Liane K. Williams
 Ms. Wendi Williams
 Barbara and David Winkelman
 Mrs. Courtney Winkler
 Mr. and Mrs. Chris Winslow
 Mr. Arthur Winter
 Mr. John Wollney
 Mr. Bob Wolter
 Mr. Bradley E. Wolven
 Mr. Seth Yohalem
 Mr. and Mrs. Eric Yondorf
 Mr. Ralph Young
 Mr. Hossein Youssefi
 Ms. Julie Zimmer
 Mr. Robert Zimmerman
 Mr. Edward Ziskind
 Mark Zivin and Margie Zivin
 Ms. Andrea Zopp
 Mr. and Mrs. John V. Zubik
 Mr. and Mrs. Paul Zucker

James Thompson
 Andy Wade
 Annie Wallis and Tom
 Whitehead
 Nathan Winkler

GIFTS WERE MADE IN MEMORY OF THE FOLLOWING INDIVIDUALS

Wilda J. Dailey
 Georgia Gibson
 Frances Corwin Gray
 Ann Kamin
 Leslie McBain
 Robert Milne
 Dorothy Morris
 Lydia Muhlenbruck
 Marta M. Reyes
 Ray and Marie Schmidt
 Mickey Shaw
 John Southcott

GIFTS IN KIND

Adelles Fine American Fare
 Adler Planetarium &
 Astronomy Museum
 Adventure Stage Chicago
 Alfie's Inn
 Mrs. Shannon Amoako
 Amplify Local Marketing
 AnimalSense Canine Training
 and Behavior
 Ms. Anita Andrews
 Anton-Argires Inc.
 Art + Science Salon
 Ms. Adriana Aude
 Auditorium Theatre of
 Roosevelt University
 Ayla's Originals
 Mr. and Mrs. Darrin R. Bacon
 The Bagel
 The Bank Restaurant
 Mr. Erik D. Barefield
 Ms. Linnea Kathryn Barnes
 The Basket Case Shoppe
 Beam Inc.
 Belgian Chocolatier Piron
 Bella Cosa Jewelers
 Bentley Gold Coast, Joe Perillo
 Beverly All-Stars
 Beverly Arts Center of Chicago
 Bill Jacobs BMW & MINI in
 Naperville
 Black Ensemble Theater
 Black Entertainment Television
 LLC
 Blue Chip Casino
 Blue Plate Catering

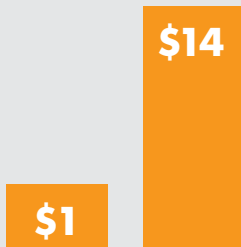


MENTAL HEALTH

Our case-management and counseling services address the mental, behavioral and emotional disorders of adults and youth.

4,730 children and adults were served within the counseling programs, with **96%** of clients meeting their treatment goals.

98% of adult clients successfully stayed in their communities by remaining stable in their housing and avoiding psychiatric hospitalization.



\$4-\$14 SAVED

in reduced criminal activity and hospitalizations **for every \$1 invested** in mental health treatment²

BMO Harris Bank
 Bob Campbell Photography
 Bob Chinn's Crabhouse
 The Boston Consulting Group
 BreaktheCurseKit.com
 Broadway In Chicago
 Ms. Linda Brown Blakley
 Build-a-Bear Workshop
 Bulls/Sox Training Academy
 Busy Bee Barber Shop Inc.
 Butterfield's Pancake House
 C3 Presents
 Carlson True Value Hardware
 Carol Stream Ice Rink
 Mr. and Mrs. Larry Carroll
 The Cellar Bistro
 The Celtic Knot Public House
 Central Street Café
 Chalet Landscaping and
 Nursery
 Chef by Request Catering
 Chicago Bears
 Chicago Blackhawks
 Chicago Bulls
 Chicago Chamber Musicians
 Chicago Cubs
 Chicago Cut Steakhouse
 Chicago Dog Runner, LLC
 Chicago History Museum
 Chicago Shakespeare Theatre
 Chicago Sinfonietta
 Chicago Symphony Orchestra
 The Chicago Tribune
 Chicago White Sox
 Chicago Wolves
 Chili's Grill & Bar
 Cinemark@7Bridges
 Citizens for Gresk
 Clarice's Creating Beautiful
 Looks
 Classic Cinemas
 Classic Kids
 Club Lucky
 Cocorico LLC
 Mrs. Merle G. Cohen
 Comcast SportsNet - Chicago

Ms. Christine Conry
 Continental Audi of Naperville
 Core Interior Design
 Costco Wholesale
 The Dailey Method
 Dave's Italian Kitchen
 daVinci Group Ltd.
 Dempster Auto Rebuilders
 DePaul's Merle Reskin Theatre
 Design Green Landscapes
 Design Lines
 Destination Fitness
 Ms. JoAnne Diamond
 Discover Financial Services
 Disney Worldwide Services, Inc.
 Domo77
 Doubletree Hotel Oak Brook
 Downers Grove Ice Arena
 Downtown Naperville Alliance
 Mr. and Mrs. Craig J.
 Duchossois
 DuPage Children's Museum
 East Bank Club
 Edwards Fashions Unlimited
 Egea Spa and Salon
 Ella E. Modern Vintage Jewelry
 Elmhurst Art Museum
 enzee boutique
 The Essence Suites
 eta Creative Arts Foundation
 Euclid Beverage
 Mr. Jorge Farr-Aguilar
 Mr. Robert L. Fealy
 The Fireplace Inn
 First Congregational Church,
 Downers Grove
 Law Offices of Michael W.
 Fleming
 Flour + Wine
 Form and Flux Art Glass
 Four Corners Tavern Group
 Four Winds Casino Resort
 Fox Bowl
 Fox Vending, Inc.
 Mr. and Mrs. Carlos H. Franco
 Frederick Lynn LLC

Free At Last Charters
 Gallery KH
 Ms. Erin Gardiner
 George Ritzlin Antique Maps
 & Prints
 Mr. C. Gary Gerst
 Getting It Together
 Mr. Steven R. Gilford
 Giordano's of Downtown
 Naperville
 Mr. and Mrs. Steven P. Gonzalez
 Xochitl Gonzalez
 Good's of Evanston
 Gourmet Express
 Graham's Fine Chocolates &
 Ice Cream
 Mr. Michael D. Graveline
 Mr. and Mrs. Nicholas Greifer
 Mr. and Mrs. Richard Gulliver
 Hand-N-Paw
 Harold's True Value Hardware
 Health Track Sports Wellness
 Ms. Marisol Hernandez
 Hilton Chicago & Towers
 Mr. Roger Hochschild
 Holiday Inn & Suites - Carol
 Stream
 Hooters
 Ms. LaToyia Huggins
 Mr. Tony W. Hunter
 Mr. and Mrs. Robert J. Hyde
 Hyde Park Art Center
 I Have a Bean
 iO Theater
 ITSavvy
 Ms. Tasha Jackson-Jones and
 Mr. Damian Jones
 Mr. Bruce Jacobs and Mrs.
 Judi Jacobs
 Mr. W. Kirk James
 Jane Miller Women's Clothing
 Gallery
 Jeans and a Cute Top Shop
 Jennifer Schweizer, LMT of
 Apricot Grove
 Jenny's Steakhouse & Pub
 Mr. Manuel Jimenez
 Mr. Dick Johnson
 Joint Civic Committee of
 Italian Americans Women's
 Division
 Colleen and Jim Jones
 Mr. George Joseph and Ms.
 Carolyn Bateman
 Mr. and Mrs. Michael and
 Ashley Joyce
 Kappa Alpha Psi
 Fraternity Inc.-Maywood-
 Wheaton Alumni

Katherine Anne Confections
 Mr. and Mrs. Melvin Katten
 Mr. and Mrs. Daniel Keefe
 Ms. Rachael L. Kemnic
 Adam Kibort and Katherine
 Martin
 KJ Watts Art Studio and Gallery
 Lisa Kluever and Sans Souci
 Kohl Children's Museum
 Koi Chinese and Sushi
 Kralovec, Jambois &
 Schwartz - Attorneys
 LA Fitness
 Lagunitas Brewing Company
 Ms. Marcia Lamoureux
 Ms. Virginia Lawton Boller
 Leah Chavie Skincare Boutique
 Leslie Car Wash
 Lettuce Entertain You Enterprises
 Live Nation
 Lou Malnati's Pizzeria
 Lulu's Dim Sum and Then Sum
 Mr. Joseph Luna
 Lurvey Landscape Professionals
 Luscious Layers Bakery
 Lynfred Winery
 Lyric Opera of Chicago
 Mr. and Mrs. John Maffei
 Maggiano's Little Italy
 Make It Better LLC
 Mr. and Mrs. Eugene D. Malloy
 Dr. Kimberly A. Mann
 Ms. Kate Martin
 Massage Envy
 Robert and Patricia Mathis
 Lyn and Shelton Matsey
 Mayer Brown LLP
 Mr. and Mrs. Glenn M. Mazade
 Mr. and Mrs. JR McBride
 Mr. and Mrs. Charles B.
 McKenna
 Ms. Kitty Meddows
 Medieval Times
 Richard and Martha Melman
 Metropolis Performing Arts
 Centre
 Metropolitan Brewing
 Microsoft Corporation
 MillerCoors
 Moller Financial Services
 Mt. Everest Restaurant - Taste
 of Himalayas
 Mr. and Mrs. George and
 Phyllis Mucciatti
 Museum of Science and
 Industry
 Naper Settlement
 Naperville Running Co.
 Navigant Consulting, Inc.



\$10,524

**ANNUAL RETURN
 ON INVESTMENT FOR
 EACH CHILD SERVED³**

EARLY LEARNING

Our early childhood learning center, home-based and school-based services are for children and families who meet Federal Poverty Guidelines in Chicago and in DuPage County, some in partnership with Educare. **1,754 children from ages 0 to 5 years** received our services.

Mr. Carl Neumann
Northlight Theatre
Notice Boutique
NY Bagels and Bialys
Oceanique
Old Fashioned Doughnuts
Olive'n Vinnie's Oil and
Balsamic Bar
Oscar Isberian Rug Co.
Out-U-Go! Pet Care
Mr. Brian Paladie
The Pampered Chef
Pandora Old Orchard
Park Hyatt Chicago
Ms. Rebecca Parker
Pat Mooney Inc.
The Peggy Notebaert Nature
Museum
The Peninsula Chicago
Mr. Ed Perez
The Perfect Thing
Mr. and Mrs. Alan Peterson
Mr. Mark A. Peterson and Mrs.
Marcella A. Peterson
Phil Stefani Signature Events
Virginia Johnson Pillman and
Stanley M. Pillman
Pistil & Vine
Mr. and Mrs. Jeffrey R. Platt
Ms. Kristin Pollock
Populus Group
Prairie Moon All American
Dining
Precision Human Performance
RA Sushi Bar Restaurant
Raging Waves Water Park
Ms. Barbara Rapp

Ms. Lindsay Rapp
Ravinia Festival
Raw Bar
Razny Jewelers
Renaissance Chicago
Downtown Hotel
Ritz-Carlton Hotel Co.
Robinwood Consulting
Rock Candy - A Child Centered
Salon + Spa
Mariel Rodriguez
Mr. James Rondeau
Susan and Robert Rose
Rosebud Restaurants
RPM Italian
Ms. Sophia Ruffolo
Ms. Kathleen K. Rummel
The Ruth Page Center for
the Arts
S.P.A.C.E.
Salmon Cove
Salon Buzz
Salon Lotus
The Second City
SFP Fishing Outfitters, Inc.
John G. Shedd Aquarium
Shic Spa
Mr. Mark Slaby
Mr. Marvin Smith
Ms. Leslie M. Smith
Spare Time Incorporated
Staples Advantage
Mr. and Mrs. Jon Stapleton
Scott, Kelly and Makena Steffens
Steppenwolf Theatre
Company
Stitch

Mr. and Mrs. John Stitzell
Stones Jewelry
The Struckmeyer Family
Stuart-Rodgers Photography
Subway
Su-Ki's Salon
Renee and Frank Summers
Sushi Mono
Suzette's Creperie
Mr. John A. Svoboda
Swedish Bakery
Taco Diablo
Tasting deVine
Tasting deVine Cellars
Mr. Derrick Taylor
Ms. Eloise Tobias
Tolzien's Auto Service
Town & Country Distributors, Inc.
Traverso's
Donna, David, and Julia Tropp
TRU
Truefitt & Hill
Trunk Club
UBER
University of Chicago Court
Theatre
U.S. Cellular
Valero Design
Michael and Lori Vardas
Michael and Betsy Waller
Waterleaf Restaurant
Weber-Stephen Products LLC
Wheaton Barbell & Fitness
Wheaton Family Service
League
Wheaton Garden Club
Wheaton Meat Company

Wheaton Park District
Mr. Bruce White
White Pines Golf Dome
Mr. and Mrs. Patrick Whiteside
Whitewater Gallery
Mr. Bob Williams
Ms. Leslie Wilson
Windy City Limousine & Bus
Company
The Wine Goddess
Winestyr
Wirtz Beverage Illinois
Women of AT&T - Northern
Illinois Chapter
Ms. Debbie K. Wright
Jean M. Xoubi, LCPC
Yoga by Degrees
Yomechas Federation Indian
Guides and Princesses
Zanies Comedy Night Club



HEAD START

Children ages 3-5 in our
Head Start programs met
or exceeded expectations
in the following:

91%
literacy
development

96%
physical
development

89%
mathematical
development

94%
cognitive
development

94%
social emotional
development

COMMUNITY SCHOOLS

Our community schools program not only focuses on improving academics, but also on life skills. The program addresses the family as a whole, engaging students and their parents to achieve academic success.

80% of teachers reported that students improved their behavior with their peers

71% of students reported that coming to the after-school program helped them get along better with other students

94% of parents indicated that the after-school program helped their child to learn things that enabled them to do better in school

89% of parents reported that the after-school program helped them learn ways to support their child's education



34 SCHOOLS

served in Chicago,
suburban Chicago and
West Chicago



7,359

students enrolled in
the program

HOW WE HELP

References: 1. & 3. Ludwig, J. and Phillips, D. (2007). The Benefits and Costs of Head Start. Social Policy Report. 21 (3: 4); Deming, D. (2009). Early childhood intervention and life-cycle skill development: Evidence from Head Start. American Economic Journal: Applied Economics, 1(3): 111-134; Meier, J. (2003, June 20). Interim Report. Kindergarten Readiness Study: Head Start Success. Preschool Service Department, San Bernardino County, California; Deming, D. (2009, July). Early childhood intervention and life-cycle skill development: Evidence from Head Start, p. 112. **2.** For every \$1 invested in mental health treatment, \$4 to \$14 is saved in reduced criminal activity and hospitalizations (Desan et al, 2011). Desan PH, Zimbren PC, Weinstein AJ, Bozzo JE, Sledge WH. Proactive psychiatric consultation services reduce length of stay for admissions to an inpatient medical team. Psychosomatics. Nov-Dec 2011;52(6):513-520.



metropolitanTM
family services



WWW.METROFAMILY.ORG