



Welcome to Osan Air Base and to the Turumi Lodge. Whether your stay with us is for leisure or for business, we recognize that you have many other hotel options to choose from, and we're delighted that you've chosen the Turumi Lodge.

For current information on base activities, such as the dining, fitness center, outdoor recreation, ITT, etc. please visit <https://www.51fss.com/>. Also from there, you can click on Community and Dining, then simply click on Turumi to view our most current lodging information or <https://www.51fss.com/turumi/>.

If you require further assistance or information you have a hard copy of our lodging Guest Directory placed in your room. We have also placed our monthly "The Force" Magazine in your room that contains information for events and programs for the current month. Our Front Desk Guest Service Representatives are available 24 hours a day to assist you with specific information. The Turumi Lodge can be reached at DSN: (315) 784-1844 or Commercial: (Country Code +82) 031-661-1844 from outside the lodge or simply dial "0" from your room to be connected to our front desk.

We really hope you enjoy your stay!

Sincerely,

SAMUEL M. SANSONE, NF-IV
General Manager, Turumi Lodge

~ To Our Guests ~

In ancient times there was a prayer for “The Stranger Within Our Gates.” Because this hotel is a human institution to serve people, and not solely a money-making organization, we hope that god will grant you peace and rest while you are under our roof.

May this room and hotel be your “second” home. May those you love be near you in thoughts and dreams. Even though we may not get to know you, we hope that you will be as comfortable and as happy as if you were in your own home.

May the business that brought you our way prosper. May every call you make and every message you receive add to your joy. When you leave, may your journey be safe.

We are all travelers. From “birth till death” we travel between the eternities. May these days be pleasant for you, profitable for society, hopeful for those you meet, and a joy to those who know and love you best.

*From a Washington, D.C.
Hotel*



The Air Force Inns Promise

Our goal is to provide you a clean, comfortable room to guarantee a good night's rest and pleasant stay. If any part of your stay with us is not satisfactory, please provide the lodging manager or front desk staff an opportunity to 'make it right'.

Forgot an Item?

We have provided you with a few complimentary items to get you through your first night's stay. Feel free to ask any Lodging team member if you need any of these items replenished. If you forgot to pack any other toiletry item, please come see us at the front desk. We should have what you need available for purchase.



GUEST SERVICES & INFORMATION

- ❖ **CHECK OUT TIME:** 1100 hrs. Should you require a late check out, please contact the Reception Desk. A late check out fee, equivalent to one (1) night's stay may be assessed
- ❖ **CHECK CASHING:** Checks may be accepted for room charges only. Check cashing services are available at AAFES Base Exchange, 51st Force Support Squadron Clubs, Osan Community Bank and USA Federal Credit Union
- ❖ **CLASSIFIED DOCUMENTS:** Lodging is not authorized to store classified materials. Please contact Base Operations (784-4038) or Command Post (784-7000) in order to follow proper protocol for classified items
- ❖ **FAX & INTERNET:** Please use our Guest Business Center for faxes and Internet service. It is located on the first floor, Bldg 772. Word processing, printing, and copier services are available. Wireless internet is also available throughout the Turumi Lodge, including guest rooms and lobby
- ❖ **ROOM RATES:**

VQ Room	\$60.00 Per Night
Business/DV Suite	\$69.00 Per Night
General Suite	\$75.00 Per Night
TLF	\$63.00 Per Night
TLP	\$63.00 Per Night/With Pet additional fee of \$10.00 Per Night
- ❖ **HOURS OF OPERATION:** Turumi Lodge Reception Desk, Bldg 772, is open 24 hours, seven days a week. Our Customer Service Representatives are always available to assist you.
- ❖ **HOUSEKEEPING SERVICES:** Housekeeping service is provided daily, unless a "Do Not Disturb" sign is displayed. However, the room must be cleaned at least every 72 hours. Please contact the Reception Desk if you are a shift worker, or require specialized cleaning service. Services include daily replacement of un-hung towels, paper products, coffee service, as well as a thorough cleaning. Linen is changed every seven days, or at your request. We ask your assistance in keeping personal items stored properly; our housekeepers are not permitted to move your belongings. Please use the customer comment cards located on the desk to let us know if our cleaning staff met or exceeded your expectations. Again, your comfort is our paramount concern!
- ❖ **AMENITIES:** Amenity items are provided for the convenience of the guest and are intended for an initial nights stay. In the case where an amenity is needed, the item(s) should be available for purchase through the sundry operation. Our sundry operations are open 24/7.
- ❖ **ICE MACHINES:** Ice machines are located in the laundry room(s) of all VQ buildings
- ❖ **LAUNDRY:** Washers & dryers are provided free of charge to our registered guests. Laundry Detergent is available in the vending machines located in each laundry room or in our Sundry Store. Laundry rooms located on each floor. Please see the floor plan on the following pages.
- ❖ **LENGTH OF STAY:** Due to the uniqueness of the Osan mission, please contact the Housing Office at 784-5394 to verify TLA entitlements.
- ❖ **Payments:** All Space Available Guests will require an advance payment for any approved extension. All Air Force lodging guests must pay the established daily room rate. Payments must be made every 15 days for all long term guests. Long term guest with no valid credit card, have to pay 30 days up front.

- ❖ **LINEN / TOWELS:** Please do not remove government owned linens or towels from your quarters or use them for anything other than their intended purpose, i.e., polishing shoes, vehicles, pool, etc. You may be charged for unaccounted for items upon check out
- ❖ **LOST & FOUND:** Items found after check out are tracked in our Property Management System. Please contact the Reception Desk if you have lost or found an item. Perishable items are disposed of immediately, all other items are held for up to 30 days
- ❖ **MAIL:** To send or receiving mail during your stay in Turumi Lodge, please use “General Delivery” Service at the base Post Office. For additional information, please see the base Facilities page.
- ❖ **MAINTENANCE:** Should your room require maintenance, please notify the Reception Desk or complete the Maintenance Request Form located in the desk binder and hang on the outside of your door
- ❖ **MAPS:** A wide variety of maps and local area points of interest are available in the Main Lobby, the ITT Office, Bldg 924, and the Family Support Center, Bldg 769.
- ❖ **MESSAGES:** A flashing red light on your phone indicates you have a message waiting. Please dial 6000 or the message button to retrieve your messages.
- ❖ **MOVIE RENTAL:** DVD's are available at the Turumi Lodge Sundry Store on the Lobby Level. For your convenience, rentals can be charged to your guest account
- ❖ **NO SMOKING:** All Turumi Lodge rooms are 100% smoke free. A \$150.00 cleaning/deodorizing fee may be assessed for non-adherence to this policy and it can result in cancellation of your reservation. Please use the designated smoking areas as identified and posted in accordance with 51st FW Base Policy
- ❖ **PARKING:** Limited parking is available at each building. Please remove any valuables and secure your vehicle
- ❖ **PERSONAL EFFECTS & PROPERTY:** Valuable personal property should be secured in your luggage, taken with you, or placed in the room safe when leaving the room. Because housekeepers are restricted from picking up or moving Guest's personal property, leaving items unsecured can result in your room being lightly cleaned
- ❖ **PETS:** Pets of any kind are not authorized in lodging. Except the 8 designated pet family units located in our TLF's Bldg 709. Please see the kennel listing located in the 51st Force Support Squadron Section of this Guest Directory.
- ❖ **SAFETY:** The following restrictions are in place for the safety of all guests:
 - No smoking in lodging; all rooms are 100% smoke free
 - Do not store highly flammable liquids/materials in your room
 - Do not use cooking or heating devices other than those provided
 - Do not place charcoal grills within 15 feet of the building
 - Do not place hot appliances such as irons, coffee pots, etc., in drawers or on furniture
 - Do not overload electrical circuits
 - Do not leave heated cooking or electrical appliances unattended**Additionally, please use door “peep hole” to identify visitors before opening your door. Be prepared to show identification if returning to your room while cleaning is in progress*
- ❖ **WAKE UP SERVICES:** **Press 6000 on phone then follow voice prompts to secure a wake up call. In addition, alarm clocks are provided in each room**

DRY CLEANING / LAUNDRY SERVICE

Turumi Lodge has a Dry Cleaning / Laundry Service available to meet all your needs. This service is for “you” our customer and is the only “1” day turnaround Dry Cleaning / Laundry Service available on Osan AB

- ✓ Call Housekeeping Ext 5471, for Laundry / Dry Cleaning pick up before 08:00 hrs. Or Laundry / Dry Cleaning can be left at front desk for servicing. Laundry / Dry Cleaning received after 0800 will be processed the following service day.
- ✓ This service is available Mon – Sat (closed Sunday & American Holidays).
- ✓ The Staff will return the Laundry / Dry Cleaning to your room before 1300 hrs the next service day.
- ✓ Charges will be posted to your room bill.

GUEST RESPONSIBILITIES

- ❖ Responsible for your conduct and that of your guests, and/or family members
- ❖ Please use audio equipment and televisions at reasonable levels during all hours as your neighbor may be working a shift schedule
- ❖ Ensure government property is not removed. Report any damage to rooms, furnishings or linens
- ❖ Ensure all room, phone, and sundry charges are paid prior to departure
- ❖ Please note the closest stairway evacuation route. Inform the Reception Desk of any safety issues that are identified
- ❖ Help us conserve utilities. Use energy conservation measures by turning off lights, TV's, radios, etc. when not in use and when leaving your room. We also invite you to conserve other natural resources; please see Amenity/Conservation notice located in each guest bathroom
- ❖ General cleanliness of the kitchenette area, to include refrigerator, stovetop and dishes
- ❖ Ensure personal items are not left on the bed or in a manner that would prevent cleaning services
- ❖ Secure your valuables. Secure safes are available in each guest's room
- ❖ Report maintenance problems or concerns to the Reception Desk or complete the Maintenance Request Form located in the desk binder and hang on the outside of your door
- ❖ Display the Do Not Disturb sign to ensure uninterrupted rest. Please remove sign when not in the room. For health and safety standards, our cleaning staff will enter rooms regardless every 3 days to provide service
- ❖ Use 51st FW designated smoking areas as posted. All Turumi Lodge rooms are smoke-free
- ❖ No open containers of alcohol or sleeping in the lobby
- ❖ Bicycles, auto parts, etc., may not be kept in the rooms. Bicycles may not be locked to entrance stairways, or other stationary objects. Please use available bike racks.

51ST FORCE SUPPORT SQUADRON

Please visit our information area in the Lobby Level of Bldg 772 for hours of operation and detailed information on all Services Activities. Please utilize our maps for exact location of each facility

- ❖ **AUTO HOBBY CENTER** **Bldg 1214 784-4787**
 - The auto skills center includes 12 working bays, an alignment rack, coin-operated car wash and outdoor fully automatic car wash. The shop provides all necessary tools and equipment.
 - Hours of Operation: Mon-Fri 0900 - 1800

- ❖ **BOWLING CENTER "MiG ALLEY"** **Bldg 975 784-4229**

Consists of 24 AMF lanes, snack bar, pro shop, and slot machines. Hours of operation:
Mon-Turs: 1100-2200
Fri: 1100-2400 Sat: 1030-2400 Sun: 1030-2200 Snack Bar Delivery: Sun-Thurs:
1030-2130
Fri-Sat: 1030-2330

- ❖ **CHILD DEVELOPMENT CENTER** **Bldg 738 784-4966**
 - Provides full-time, part-time and hourly care programs for children 6 weeks to 5 years. Hours of operation: Mon – Fri: 0700 - 1800

- ❖ **COMMUNITY CENTER "MCPHERSON"** **Bldg 916 784-3123**
 - This is a mixed age, multi-use facility that offers space to relax, take classes, make phone calls, and use on-line services. Hours of operation: Mon – Thurs: 0700-2200, Fri: 0700-2400, Sat: 0900-2400, Sun: 0900-2200

- ❖ **FITNESS CENTER** **Bldg 1423 784-5568**
 - This is a "5 Star Rated" Facility and is open 24 hours, seven days a week. Required CAC from 2200~0500 to access.

- ❖ **FLIGHT TRAINING CENTER "AERO CLUB"** **Bldg 1131 784-4424**
 - Provides members an opportunity to obtain their FAA Private Pilots License. Hours of operation: Mon – Sun: 0800 - 1700

- ❖ **GOLF COURSE "LAKES AT OSAN"** **Bldg 1776 784-4128**
 - The 18-hole course has a pro shop and driving range. Carts, clubs, lockers and storage space are available for rental. Hours of operation: Course/Range/Pro Shop: Open dawn-Close Dusk, Lounge: 0600-1900

- ❖ **HUMAN RESOURCES OFFICE** **Bldg 936 784-1408**
 - Provides information on Non-Appropriated Fund (NAF) job opportunities for spouses, family members and off-duty military personnel. Hours of operation: Mon – Fri: 0730-1630

- ❖ **BOARDING KENNEL** **Bldg 421B 784-4314**
 - Boards only dogs and cats. By appointment Only. 7 days a week year round

- ❖ **LIBRARY** **Bldg 921 784-6611**
 - Offers a complete reference section and a large selection of educational resources. Conference room for meetings and computers for public use. Hours of operation: Sun – Thurs: 1000–2100, Fri – Sat: 1000-2000

- ❖ **OUTDOOR RECREATION** **Bldg 1304 784-4007**
Outdoor recreation manages recreation equipment rental, two pools, kennels and all associated programs. Hours of operation: Tue – Fri: 1000 – 1800, Sat, Sun & Holiday: 1000 – 1600. Closed Mondays

- ❖ **SCHOOL AGE PROGRAM** **Bldg 750 784-6830**
 - Hours of operation: School Days: Mon – Fri: 0700–0800 & 1430-1800, No School Days: Mon – Fri: 0700-1800 Exercise: 0600~1800

- ❖ **SWIMMING POOLS**
 - Defender (Outdoor; seasonal: June – September) **Bldg 1416 784-4986**
 - Mustang (Indoor) **Bldg 209 784-1452**
 - Hours of operation: Mon, Wed – Fri: 1230 – 1930, Sat, Sun & Holiday: 1130 – 1830
Closed Tuesday

- ❖ **TEEN CENTER “CLUB NOWHERE”** **Bldg 433 784-4607**
The teen center offers an environment where Teens ages 13 to 18 can relax and spend time with friends. Hours of operation: Mon-Turs: 1500 – 2000, Fri: 1500-2200
Closed Sun – Thu & Holidays

- ❖ **TICKETS, TOURS & TRAVEL (ITT)** **Bldg 924 784-4254**
 - Provides shuttle service to/from Incheon International Airport and offers a variety of local area tours. Tickets for airport may be purchased on bus. Hours of operation: Mon – Fri: 1000–1800, Sat: 1000 – 1600 Sun: 1000-1400

- ❖ **VET CLINIC** **Bldg 766 784-6614**
 - Hours of operation: Mon- Fri: 0800-1600

- ❖ **YOUTH CENTER** **Bldg 433 784-4607**
 - The Youth Center is an opportunity for children ages 6 to 13 to meet new friends, pursue interests, and develop skills through a variety of programs and resources. Hours of operation: Mon – Fri: 1000–1730, Closed Sat & Sun

- ❖ **EDUCATION OFFICE/BSE TRAINING** **Bldg 789 784-4220**
Hours of Operation: Walk-In Hours: Mon, Wed & Fri 0830-1530, Phone & E-mail Service: Mon~Fri 0800-1600

- ❖ **CIVILIAN PERSONNEL OFFICE** **Bldg 936 784-6862**
Hours of Operation: Mon ~ Fri 0730 ~ 1630 Closed on Sat, Sun & Holidays

- ❖ **CAC/PASSPORT/MPF CUSTOMER SUPPORT CENTER** **Bldg 936 784-1845**
Hours of Operation: Mon ~ Fri 0730 ~ 1530

- ❖ **MARKETING OFFICE** **Bldg 937 784-5609**
Hours of Operation: Mon ~ Fri 0730 ~ 1630
Studio 51 Mon ~ Fri 0730~1100, 1200~1630

BASE SERVICES

BASE / AAFES / DECA

Times are subject to change, please call activities to verify correct operation hours

- ❖ **AAFES BASE EXCHANGE MAIN STORE Bldg 965 784-4239**
 - ❖ Hours of Operation: 0900 – 2100 7 days a week

- ❖ **AAFES CLASS SIX / SHOPPETTE Bldg 965 0505-122-5081**
 - ❖ Open Sun – Thu: 0600-2400, Fri & Sat: 0600 - 0200. Hours subject to change during Exercises, Korean and American Holidays

- ❖ **AAFES CONCESSION MALL Bldg 965 0505-122-5000**
 - ❖ Dry Cleaners, Barber/Beauty Shop, Electronics Repair, Computer Accessories, Alteration Shop, Cell Phones, GNC, Souvenir Shops, Bottled Water dispensers and delivery, Coffee shop, Clothing Stores.
Hours of Operation: 1000-1900 daily

- ❖ **MILITARY CLOTHING SALES Bldg 965 0505-122-5321**
 - ❖ Hours of Operation: 1000-1900 daily

- ❖ **OMNI SHOPPETTE (Main Gate) Bldg 507 784-4164**
 - ❖ Hours of Operation 0600-2130 - 7 days a week

- ❖ **COMMISSARY Bldg 230 784-4403**
 - ❖ Hours of Operation: Tue, Wed, Fri: 0700 - 1900, Thurs: 0700 – 2000, Sat & Sun: 1000 – 1900
 - ❖ Closed Monday
 - ❖ *Deli Section: 1000 ~ 1900

- ❖ **POST OFFICE Bldg 965 784-4655**
 - Hours of operation:
 - Package Pickup window: Mon – Fri 1000 – 1730 Sat: 0900 – 1400
 - Official Mail Center: Mon – Fri 0900 – 1600
 - Registered Mail Service: Mon – Fri: 1000 – 1600
 - Claims \$ Inquires: Mon ~ Fri 1100 ~ 1500
 - Closed Sunday & US Holidays

- ❖ **THEATER Bldg 795 0505-122-1968**
 - ❖ Call theater for show times or go online to www.aafes.com

CHAPEL SERVICES

****Times are subject to change; please call chapel to verify correct times****

Bldg 779 For more Information: 784-5000 Duty Hours 0730 - 1630
After Hours Emergency Call To Command Post Duty Chaplain For Information 784-7000

CATHOLIC WORSHIP SCHEDULE

Daily Mass Tues~Thurs @ 1130
 Chapel Sanctuary

Saturday Vigil Mass @ 1700
Sunday Mass @ 0830

Reconciliation Sat @ 1600
 (Or By Appointment)

Marian Mass 1st Sat@1030

Holy Hour 1st Fri@1700

PROTESTANT WORSHIP SCHEDULE

Traditional Sun @ 1000
 Chapel Sanctuary

Gospel Friday @1930
 Sunday @1200
 Chapel Sanctuary

Contemporary Sun @ 1700
 Chapel Sanctuary

The Church of Jesus Christ of
Latter-Day Saints -- Call for
Information

Seventh Day Adventist Call for
Information

OTHER FAITH GROUP

Earth-Based Call for Information

Jewish Call for Information

OFF-BASE MINISTRIES

Church of Jesus Christ Of Latter-Day
Saints
Email:Raymond@xnote.com

Hospitality House Ministry
Fri-Sat@1830
Hospitality House

OTHER MINISTRIES

For more information about worship
services, religious education
opportunities, or other chapel events
call the chapel at 784-5000 or visit our
SharePoint site at

<https://osan.eim.pacaf.af.mil/51FW/51FW-HC/>

Social Media

Like us on Face Bok: Osan AB Chapel
<https://www.facebook.com/osanABchapel>

DIALING INSTRUCTIONS

EMERGENCY 911
Non emergency 784-5515
Off base 661-9111 or 661-5757
Cellular 031-661-9111

❖ PLACING CALLS:

To Base Operator	9 + 784 + 1110
To Reception Desk Prompts)	0 or 9 + 784-1844 (Follow Voice Prompts)
To Another Guest Room	Room Number
On-Base Calls (784/783 prefix only)	9 + Seven Digit Number
Off-Base Calls (Changes may occur)	99 + Number (Including Area Code)
Long Distance International Number	99 + 002 + Country Code + Number
Long Distance U.S.	99 + 0021 + Area Code + Number
DSN Calls:	
CONUS	9 + 312 + Number
PACAF	9 + Number
ALASKA	9 + 317 + Number
EUROPE	9 + 314 + Number

NOTE: Suites, have Class "A" phones, with WORLDWIDE DSN capability. All other guest room phones are Class "C" with PACAF DSN capability only. Class "A" DSN phones are also available in each squadron's orderly room.

❖ HOW TO CALL OFF BASE FROM YOUR CELL PHONE:

Dial area code (Kyong-Ki-Do: 031) + Number

❖ RECEIVING CALLS:

All incoming calls are received through our automated system. Please follow the voice prompts.

Commercial Number	011-82-31-661-1844 + # + Room Number
784-XXXX numbers	011-82-31-661-XXXX
0505-122-XXXX numbers	011-82-31-617-XXXX
DSN	315-784-1844 + # + Room Number

❖ SPECIAL SERVICES:

Wake up Calls, Voice Mail prompts)	Press 6000 on phone (follow voice prompts)
------------------------------------	--

If the message light is blinking, but the automated system indicates that there is no new message, please call the Reception Desk by dialing 0.

TELEPHONE RATES

"We strongly encourage you to utilize phone cards for long distance calls from Turumi store.

NOT all calling cards provide same Rate"

❖ **1-800 Calls: 9-800-XXX-XXXX**

Avoid this charge by using Prepaid Phone Cards available in the Sundry Store located on the lobby floor. If using a different Prepaid Card, you must dial the Base Operator and ask for an 800 dial tone.

- ❖ **Local Calls:** **\$0.25 per minute**
(Off Base and 0505-122-XXXX)
- ❖ **Calls to Local Cell Phones:** **\$0.50 per minute**
Regardless if call is established
- ❖ **Direct Dial Long Distance (U.S & Guam):** **\$1.50 per minute**
(99-002-1-area code-#)
- ❖ **All other countries:** **\$2.50 per minute**
(99-002-country code-area code-#)

**Fees are automatically posted to your account and are payable at check out. Account information can be obtained at any time by calling the Reception Desk. **

TIME DIFFERENCES FROM KOREA

Differences may vary + or – 1 hr during Daylight Savings Time

Guam	+1
China	-1
Philippines	-1
Saudi Arabia	-6
Israel	-7
Central Europe	-8
GMT/England	-9
Azores	-10
Eastern U.S	-13
Central U.S	-14
Mountain U.S	-15
Pacific U.S	-16
Alaska	-17
Hawaii	-18

QUICK REFERENCE NUMBERS

Dialing instructions: 99+0505+122-XXXX
9+784+XXXX

AAFES Barber Shop	0505-122-5111	Kennel	784-4314
AAFES Barber Shop (Mustang Club)	784-6921	Legal Office	784-4131
AAFES Barber Shop (Officer's Club)	784-2256	Library	784-6611
AAFES Base Exchange	0505-122-5000	Life Skills Clinic (Mental Health)	784-2148
AAFES Beauty Shop	0505-122-5112	Military Clothing Sales	0505-122-5321
AAFES Garage & Gas Station	784-3213	Military Equal Opportunity Office	784-4040
AAFES Laundry & Dry Cleaners	784-3144	Badabing's Pizza (delivery only)	784-2257
AAFES Taxi Service	1544-9080	MPF Customer Service	784-1845
AAFES Alterations	0505-122-5219		
Aero Club/Flight Training Center	784-4424	OB/GYN Clinic	784-3289
Airline Ticket Office	784-6097	Officer's Club	784-5530
AMC Terminal	784-1854/6883	Omni Shoppette (Main Gate)	784-4164
American Red Cross	784-1855	Front Desk (Turumi Lodge)	0
Auto Hobby Shop	784-4787	Oriental House	784-4926
Bank	784-3089	Osan Checktails	784-5865
Bowling Center "MiG Alley"	784-4229	OSI	784-1852
Burger King	0505-122-5115	Pass & ID / Ration Control Office	784-4489/784-5898
Bus Terminal	784-6623	Passports/SOFA	784-6719
Car Rental	784-5373	Pediatrics Clinic	784-2569
Chapel	784-4184/5000	Pharmacy	784-2185
Child Development Center	784-4966	Popeye's Chicken	784-2488
Chili's	784-7271		
Class Six / Shoppette	0505-122-5081	Post Office	784-1014
Command Post	784-7000	Safety Office	784-5109
Commissary	784-4403	School Age Program	784-6830
Community Center	784-3123	Security Forces Desk	784-5515
Credit Union	784-3089	Skills Development Center	784-3091
Dental Clinic	784-2108/2109	Teen Center	784-1492
Education Center	784-4220	Theater	0505-122-1968
Elementary School	784-6912	Tickets, Tour & Travel	784-4254
Enlisted Club "Challenger"	784-6900	TMO	784-6998
Enlisted Club "Mustang"	784-4311	TRICARE Office	784-2588
Emergency Room	784-2500	Vehicle registration	See Pass & ID
Family Advocacy	784-5010	Youth center	784-4607
Family Support Center	784-5440	Turumi lodge dry cleaning/laundry	783-5483 / 5471
Finance / Military Pay	784-8151		
Fitness Center	784-5568		
Golf Course	784-4128		
Health And Wellness Center (HAWC)	784-5568		
High School	784-9098		
Hospital Appointments	784-3289/3287		
Housing Office	784-1840		
Human Resource Office	784-1408		
IG	784-4995		
Immunizations / Allergy Clinic	784-2523		
Information / Base Operator	784-1110		

EMERGENCY – 911

General Manger DSN 783-5490
Asst. Manager DSN 783-5491
Guest Reception Desk – 0 (From Room)
Guest Reception Desk – 0 DSN 784-1844
Accountant DSN 783-5496
BASE Operator– 784-1110

AREA ATTRACTIONS

There are numerous opportunities for travel while here at Osan. The ITT Office, Family Support Center, Outdoor Recreation, McPherson Community Center, Youth and Teen Centers all offer a variety of tours and group activities. A few of the many choices include:

❖ **ITT:**

- Panmunjom (DMZ) Trip
- Coex Mall & Aquarium
- Chanduk Palace & Insa Antique Shopping Area
- Yoju Pottery, Mokah Museum & Shiluk
- Everland Amusement Park
- Seoul Tower & Han River Boat Ride
- Kosu Cave, Chungju Dam & Boat Ride
- Mt Sorak & East Coast Area
- Korean Folk Village

❖ **Outdoor Recreation:**

- River Rafting at Naerim Cheon
- Deep Sea Fishing at Kwong Cum Do
- Paintball
- Skiing / Snowboarding
- Equipment Rental

These are just a few trips available.

Please review “At Your Service” magazine for up to date monthly trips.

Additional information regarding “Must See” places to visit in Korea can be found at the following sites:

http://english.tour2korea.com/html/main/what_see/see_list.html

<http://www.mct.go.kr/indexe.html>

<http://english.visitkorea.or.kr>

ON BASE DINING

Dialing instructions: 9+784-XXXX
99+0505-122-XXXX

❖	AAFES Food Court (Manager Office)	Bldg 965	784-4200
	❖ <u>Pizza Hut</u>	Bldg 965	122-5050/51/52/53
	❖ <u>Subway</u>	Bldg 965	122-5050/5060
	❖ <u>Manchu Wok</u>	Bldg 965	122-5050/5060
	❖ <u>Chili's</u>	Bldg 738	122-5891
	❖ Taco Bell	Bldg 965	122-5050/5060
	❖ Baskin Robbins	Bldg 965	1225050/5060
	❖ Freshens Smoothie	Bldg 965	122-6111
	❖ Charley's Steakery	Bldg 965	122-5050/5060
	❖ <u>Bada Bing's Pizza/Checker Tails</u>	Bldg 924	784-1581/5865
	❖ Black Cat Lounge	Bldg 854	784-5228
	❖ Burger King	Bldg 828	122-5115
	❖ <u>Popeye's</u>	Bldg 828	784-2448
	❖ E - Club Dining Room	Bldg 342	784-6900
	❖ <u>MIG Alley Bowling Center Snack Bar</u>	Bldg 975	784-6868
	❖ Officers' Club	Bldg 1313	784-5530/2246
	❖ Bella Panini's – Officer's Club	Bldg 910	784-5530
	❖ <u>Anthony's Pizza – Main Gate</u>	Bldg 507	784-4164
	❖ <u>Oriental House - Golf Course</u>	Bldg 1776	784-4926
	❖ Mustang Cafe	Bldg 1313	784-4311
	❖ Mustang Cafe – Turumi Lodge	Bldg 772	784-9982
	❖ Flying M Steakhouse – E-Club	Bldg 1313	784-4311
	○ <u>Underline facilities have delivery available</u>		

Military Dining Facilities

*Authorized Personnel Only

- ❖ **Menu Information** **Bldg N/A** **784-2985**
Menu is listed online 51FSS.com

 - ❖ **The Pacific House** **Bldg 733** **784-2641**
Breakfast: Mon – Friday 0530 - 0730
Weekend/ Holidays 0700 - 0930
Sat – Sun: 0700 - 0930
Lunch: Daily 1100 - 1300
Dinner: Daily 1700 - 1900

 - ❖ **The Ginkgo Tree** **Bldg 1470** **784-6861**
Breakfast: Mon – Friday 0600 - 0900
Sat – Sun / Holiday: 0630 - 0830
Lunch: Daily 1100 - 1300
Dinner: Daily 1730 - 1930
Sat – Sun/Holiday: 1700 – 1900

 - Midnight Meal:** Mon – Fri: 2300 - 0100
Weekend/Holidays: 2300 - 0100

 - *Uniform Required at Midnight Meal**

 - ❖ **Back Of The Hangar** **Bldg 1741** **784-2883**
Lunch: Mon – Fri: 1130 - 1400
Dinner: Mon – Fri: 1700 - 1930
Closed Sat, Sun, Holidays & Down Days

 - *Flight Line Personnel Only**
-

OFF BASE DINING

There are numerous off base dining locations in the immediate area and throughout Korea. Listing below does not constitute endorsement by Turumi Lodge or the U.S. Air Force.

- ❖ **Blue Opera**
Asian Variety
- ❖ **McDonald's**
Fast Food

- ❖ **Osan Style**
Korean Galbi House
- ❖ **Pizza Club**
Pizza and Pasta

- ❖ **Hoamai**
Vietnamese Food
- ❖ **Sodam Goul**
Traditional Korean

- ❖ **Happy Teriyaki**
Japanese
- ❖ **Hanyang Galbi**
Traditional Korean

- ❖ **Lan-na**
Thailand
- ❖ **Pasta Vino**
Italian

For additional information available at the Front Desk

TRANSPORTATION

ON-BASE

- ❖ **BUS TERMINAL (New Kyongdong)** **Bldg 806** **784-6623**
 - To Yongsan Garrison and Camp Humphreys only (Bus schedule available at the front desk)

- ❖ **CAR RENTAL** **Bldg 965** **784-5373**
 - Hours: Monday ~Sunday: 1000-1900

- ❖ **ITT** **Bldg 924** **784-4254**
 - Offers transportation between Incheon International Airport and Osan Air Base as well as acting as the bus depot for the Kunsan Wolfpack Wheels. Buses depart from Checkertails/ITT and in front of the Turumi Lodge. Due to frequent changes, current bus schedules are available at the Guest Reception Desk.
 - Hours of operation: Mon-Fri 10:00-18:00, Sat: 1000- 1600, Sun: 1000 - 1400

- ❖ **BASE SHUTTLE SERVICE** **Bldg 1333** **784-4266**
 - Due to frequent changes, current shuttle schedules are available at the Guest Front Desk and are posted at www.osan.af.mil

- ❖ **TAXI SERVICE (AAFES)** **Bldg N/A** **1544-9080**
 - Operation Hours: 0500 ~ 0100 week day, weekend & holidays.

OFF-BASE

- ❖ **KORAIL (Subway/KTX):** The Korean National Railroad is a great way to explore Korea. It is an economical, interesting and unique way to travel. When traveling by train remember that you must purchase both a train ticket and a seat ticket. The KORAIL website: <http://www.korail.go.kr/eng/> is in English and provides information needed to navigate the trains and subways.

- ❖ **OFF-BASE TAXI SERVICE:** Korean taxis are readily available in most downtown areas only and are not allowed on base. Drivers speak very little English and though they do not expect a tip, most will expect payment in Won.

- ❖ **SONGTAN BUS TERMINAL:** Approximately a 10-minute walk from the Main Gate, offers express bus service to Incheon International Airport, and various destinations. The Bus Schedules are available at the Front Desk.

- ❖ **MONEY EXCHANGE:** On Base, U.S. Currency can be exchanged for Korean Won at any of the Services Clubs, bank and credit union. Won can also be withdrawn at the current daily conversion rate at ATM's located at the Main Gate, the Commissary, the BX and in the Turumi Lodge lobby. U.S. Currency can also be exchanged at a number of Korean Money Exchanges located immediately outside the Main Gate.

TV/RADIO INFORMATION

TELEVISION CHANNEL LISTING

2	AFN PRIME (ATLANTIC)
3	AFN NEWS
4	AFN SPORTS I
5	AFN PRIME (PACIFIC)
6	AFN SPECTRUM
7	AFN SPORTS II
8	AFN FAMILY
9	AFN MOVIE
13	COMMANDER'S CHANNEL
15	51 FSS CHANNEL
31	HBO SIGNATURE
32	HBO HD
33	HBO FAMILY
34	HBO HITS
51-55	BASE INFORMATION CHANNELS
61~65	KOREAN CHANNELS

RADIO STATIONS – U.S.

FM 88.3/88.5/102.7 AFN Broadcasts



DEPARTMENT OF THE AIR FORCE
 AIR FORCE CIVIL ENGINEER CENTER
 COMBINED PLANS
 Installation Layout
 FOR OFFICIAL USE ONLY
 DATE: 15 JUL 2015
 SCALE: 1:1000
 SHEET: C-1

Datum: NAD 83
 Contour Interval: 2m
 Contour Style: DTM (Low EN)
 Data: WGS 1984
 All elevations are in meters USL, Indian, and MSL.

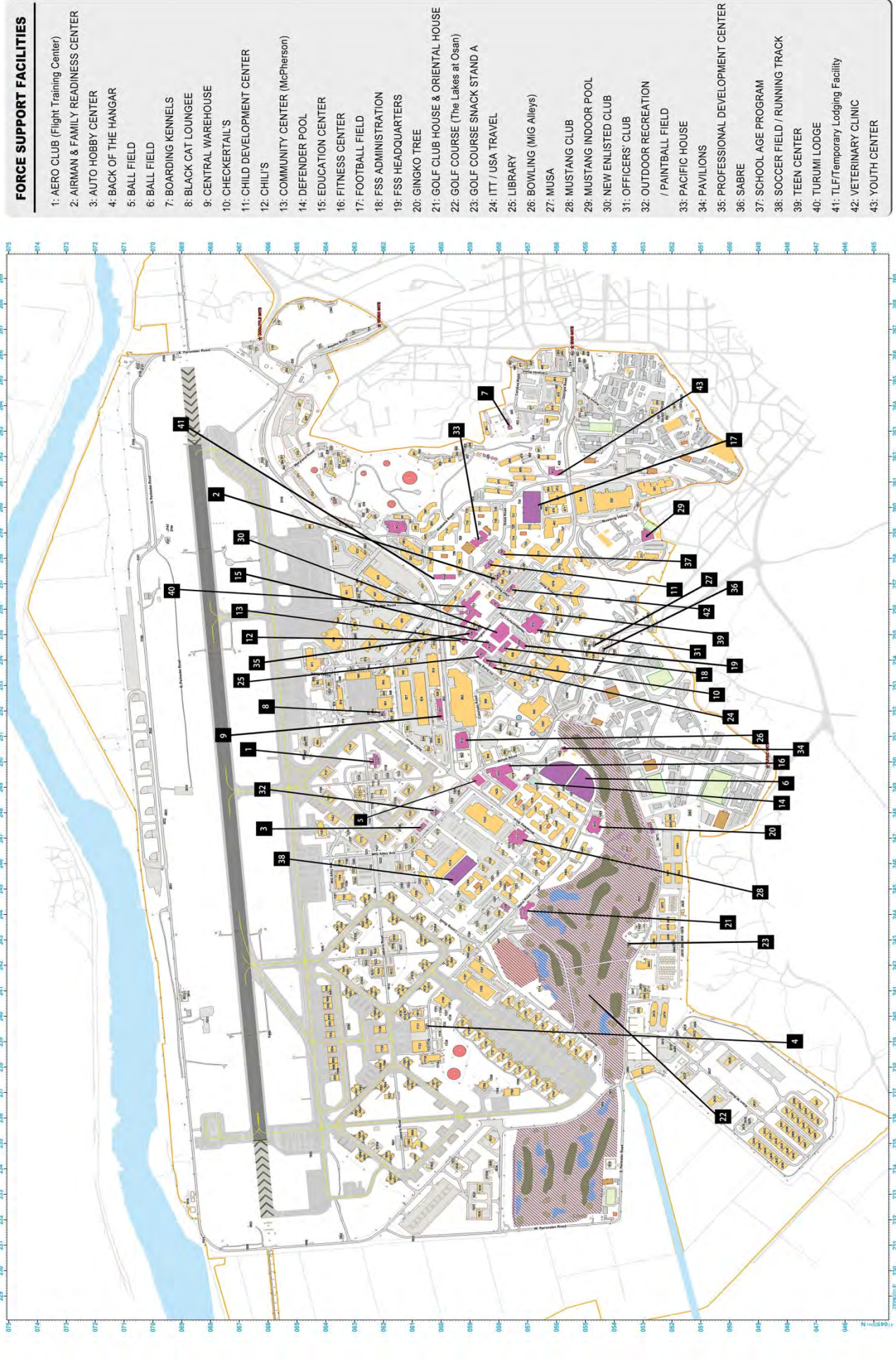
41: TLF/Temporary Lodging Facility
 42: VETERINARY CLINIC
 43: YOUTH CENTER

40: TURUMI LODGE
 39: TEEN CENTER
 38: SOCCER FIELD / RUNNING TRACK
 37: SCHOOL AGE PROGRAM
 36: SABRE
 35: PROFESSIONAL DEVELOPMENT CENTER

34: PAVILIONS
 33: PACIFIC HOUSE
 32: OUTDOOR RECREATION / PAINTBALL FIELD
 31: OFFICERS' CLUB
 30: NEW ENLISTED CLUB
 29: MUSTANG INDOOR POOL
 28: MUSTANG CLUB
 27: MUSA

26: BOWLING (MIG Alleys)
 25: LIBRARY
 24: ITT / USA TRAVEL
 23: GOLF COURSE SNACK STAND A
 22: GOLF COURSE (The Lakes at Osan)
 21: GOLF CLUB HOUSE & ORIENTAL HOUSE
 20: GINGKO TREE
 19: FSS HEADQUARTERS
 18: FSS ADMINISTRATION
 17: FOOTBALL FIELD
 16: FITNESS CENTER
 15: EDUCATION CENTER
 14: DEFENDER POOL
 13: COMMUNITY CENTER (McPherson)

12: CHILI'S
 11: CHILD DEVELOPMENT CENTER
 10: CHECKERTAILS
 9: CENTRAL WAREHOUSE
 8: BLACK CAT LOUNGEE
 7: BOARDING KENNELS
 6: BALL FIELD
 5: BALL FIELD
 4: BACK OF THE HANGAR
 3: AUTO HOBBY CENTER
 2: AIRMAN & FAMILY READINESS CENTER
 1: AERO CLUB (Flight Training Center)



FORCE SUPPORT FACILITIES

- 1: AERO CLUB (Flight Training Center)
- 2: AIRMAN & FAMILY READINESS CENTER
- 3: AUTO HOBBY CENTER
- 4: BACK OF THE HANGAR
- 5: BALL FIELD
- 6: BALL FIELD
- 7: BOARDING KENNELS
- 8: BLACK CAT LOUNGEE
- 9: CENTRAL WAREHOUSE
- 10: CHECKERTAILS
- 11: CHILD DEVELOPMENT CENTER
- 12: CHILI'S
- 13: COMMUNITY CENTER (McPherson)
- 14: DEFENDER POOL
- 15: EDUCATION CENTER
- 16: FITNESS CENTER
- 17: FOOTBALL FIELD
- 18: FSS ADMINISTRATION
- 19: FSS HEADQUARTERS
- 20: GINGKO TREE
- 21: GOLF CLUB HOUSE & ORIENTAL HOUSE
- 22: GOLF COURSE (The Lakes at Osan)
- 23: GOLF COURSE SNACK STAND A
- 24: ITT / USA TRAVEL
- 25: LIBRARY
- 26: BOWLING (MIG Alleys)
- 27: MUSA
- 28: MUSTANG CLUB
- 29: MUSTANG INDOOR POOL
- 30: NEW ENLISTED CLUB
- 31: OFFICERS' CLUB
- 32: OUTDOOR RECREATION / PAINTBALL FIELD
- 33: PACIFIC HOUSE
- 34: PAVILIONS
- 35: PROFESSIONAL DEVELOPMENT CENTER
- 36: SABRE
- 37: SCHOOL AGE PROGRAM
- 38: SOCCER FIELD / RUNNING TRACK
- 39: TEEN CENTER
- 40: TURUMI LODGE
- 41: TLF/Temporary Lodging Facility
- 42: VETERINARY CLINIC
- 43: YOUTH CENTER

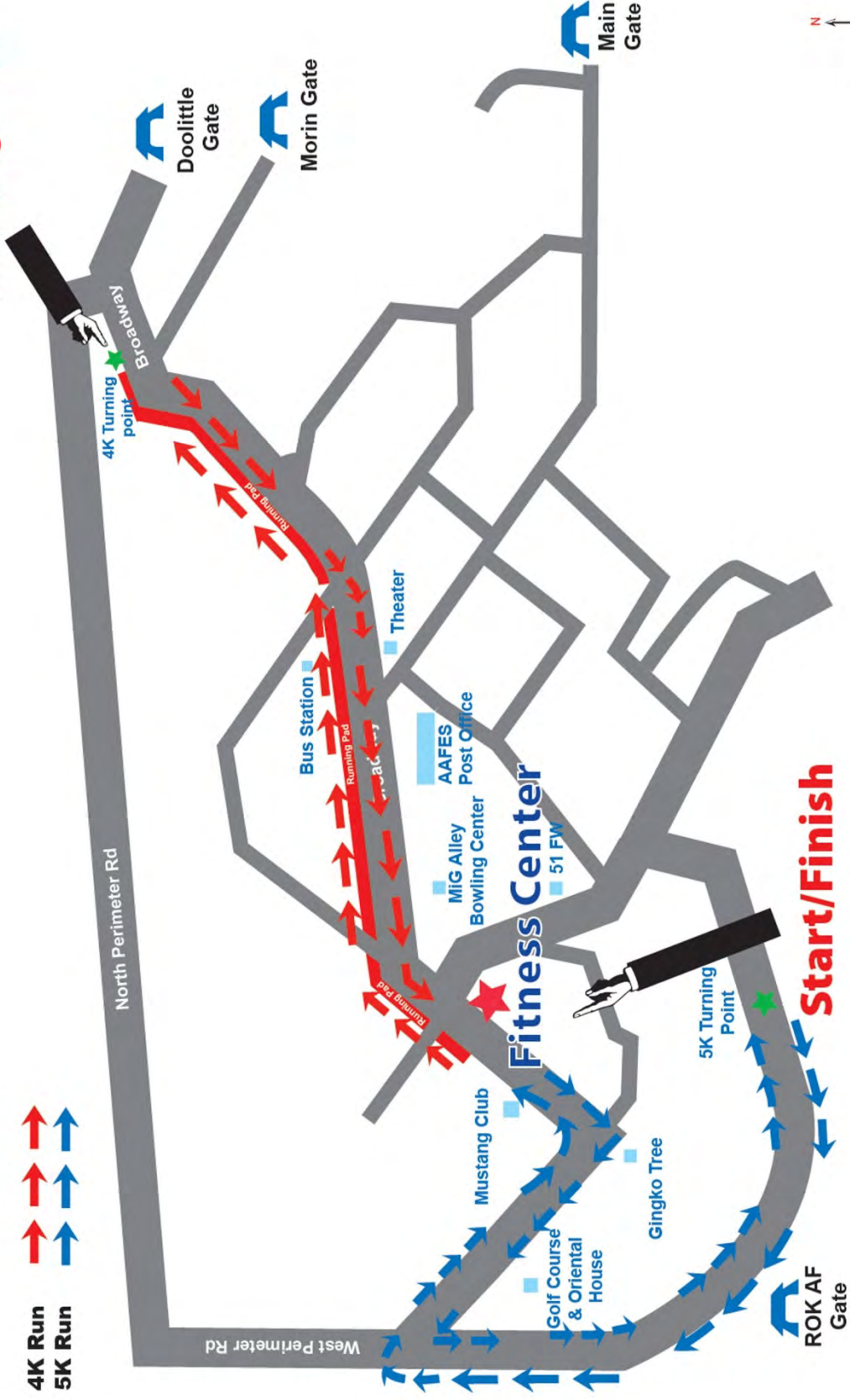
Osan Air Base



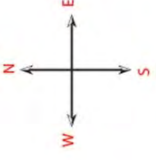
4 & 5K Run/Bike Route

4K Turning Point

- 4K Run
- 5K Run



Start/Finish



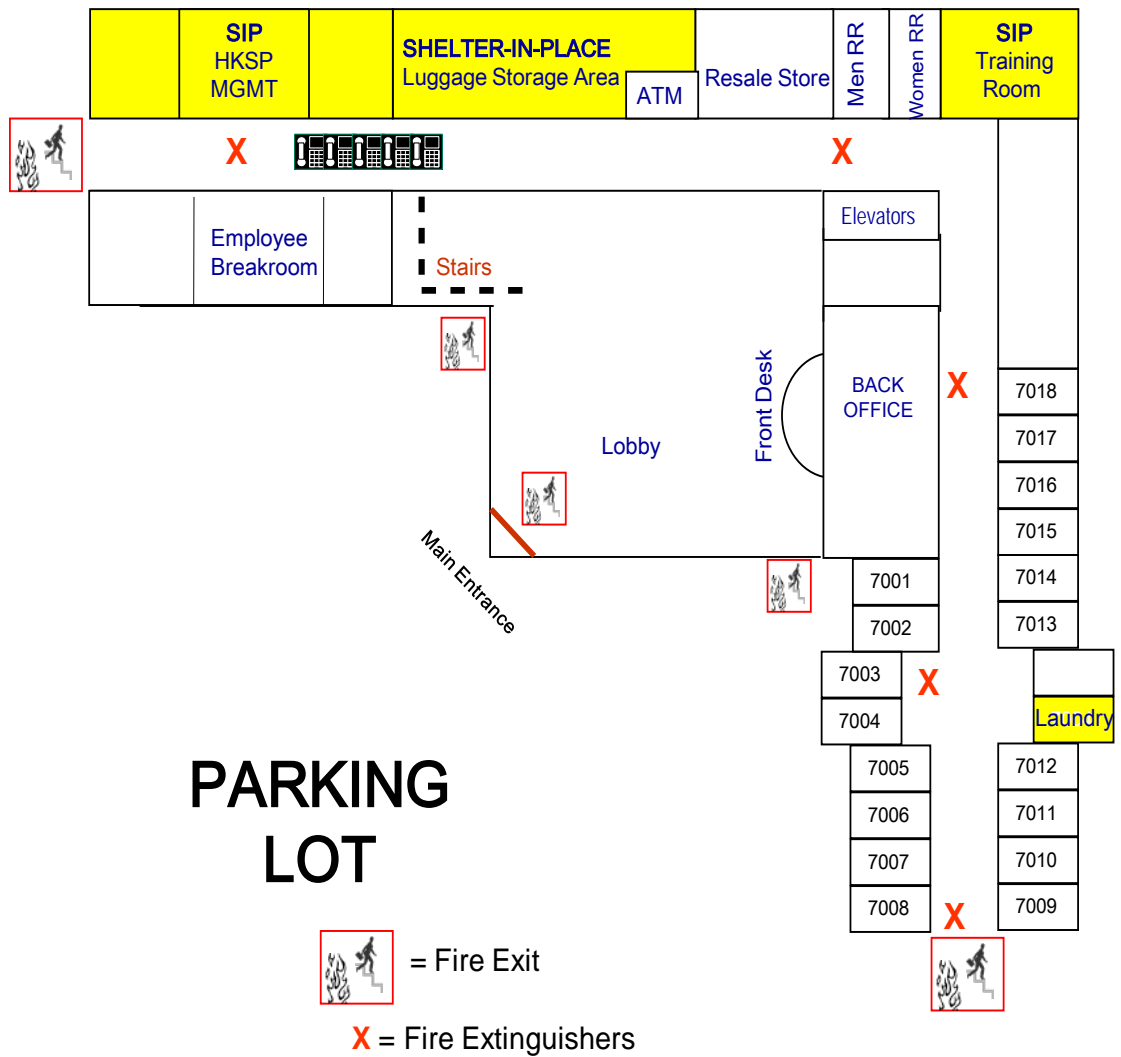
Lobby Level / Bldg 772

IN CASE OF FIRE OR EMERGENCY EVACUATION

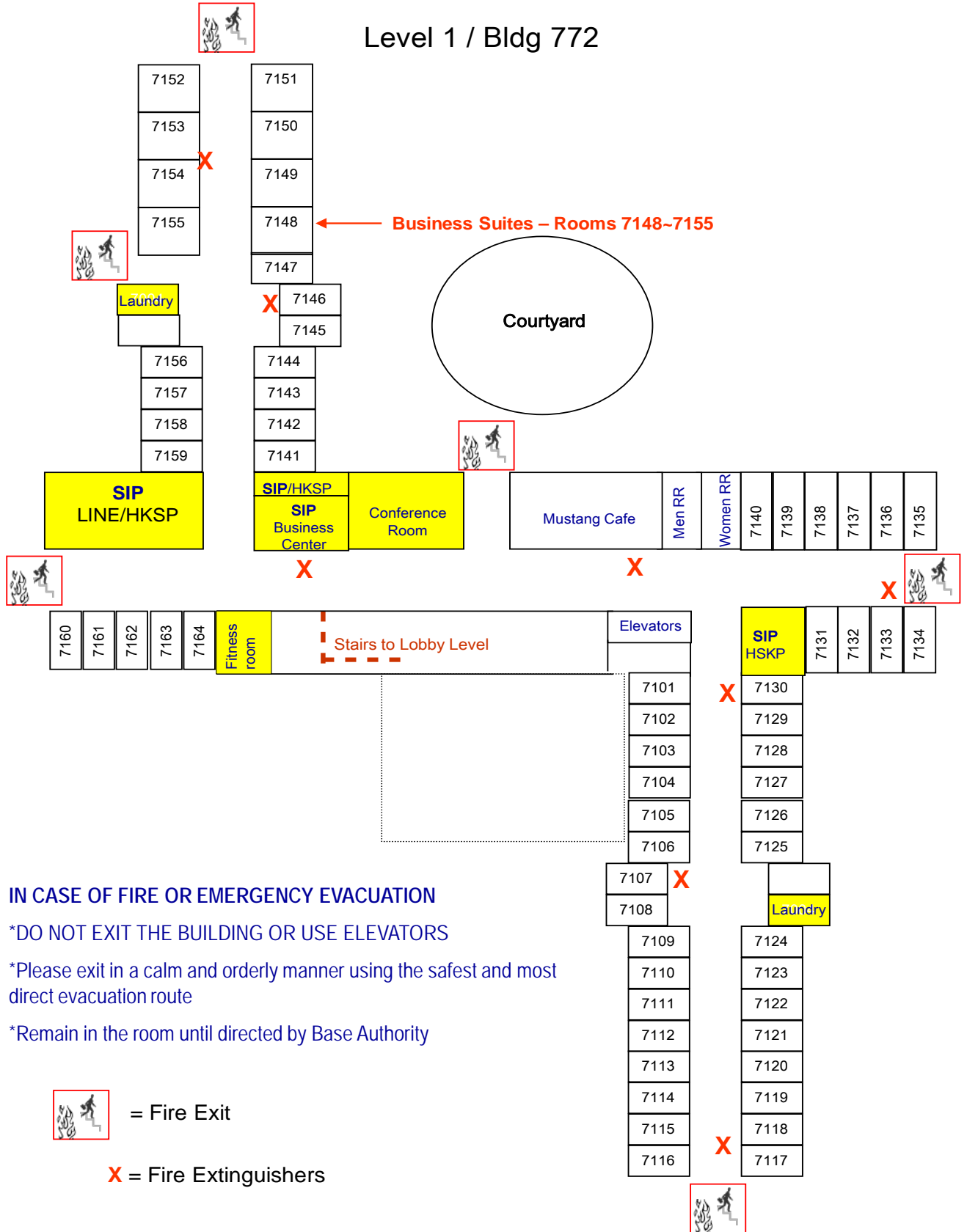
*DO NOT EXIT THE BUILDING OR USE ELEVATORS

*Please exit in a calm and orderly manner using the safest and most direct evacuation route

*Remain in the room until directed by Base Authority



Level 1 / Bldg 772



IN CASE OF FIRE OR EMERGENCY EVACUATION

*DO NOT EXIT THE BUILDING OR USE ELEVATORS

*Please exit in a calm and orderly manner using the safest and most direct evacuation route

*Remain in the room until directed by Base Authority



= Fire Exit

X = Fire Extinguishers

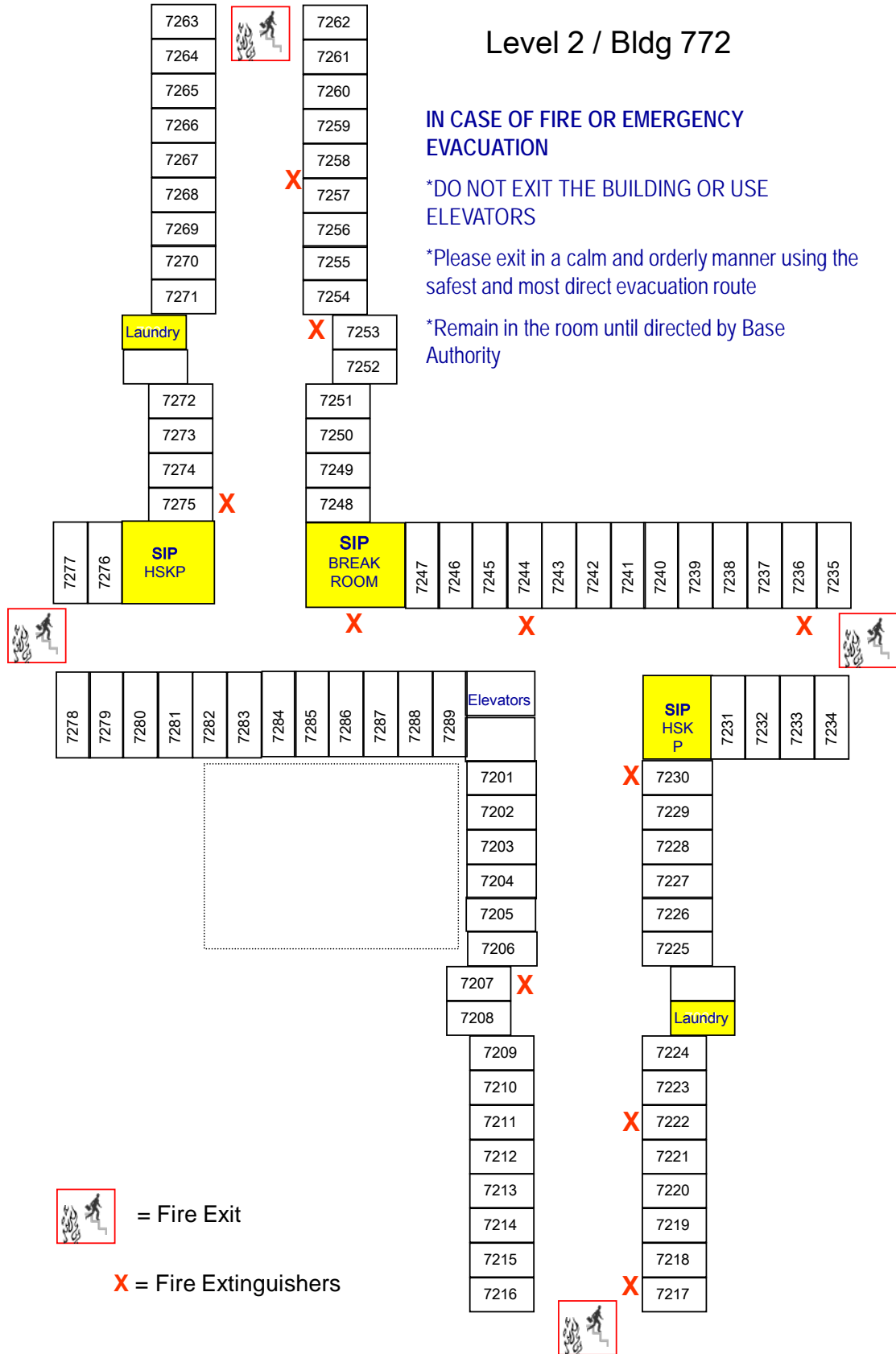
Level 2 / Bldg 772


IN CASE OF FIRE OR EMERGENCY EVACUATION

*DO NOT EXIT THE BUILDING OR USE ELEVATORS

*Please exit in a calm and orderly manner using the safest and most direct evacuation route

*Remain in the room until directed by Base Authority



 = Fire Exit

X = Fire Extinguishers

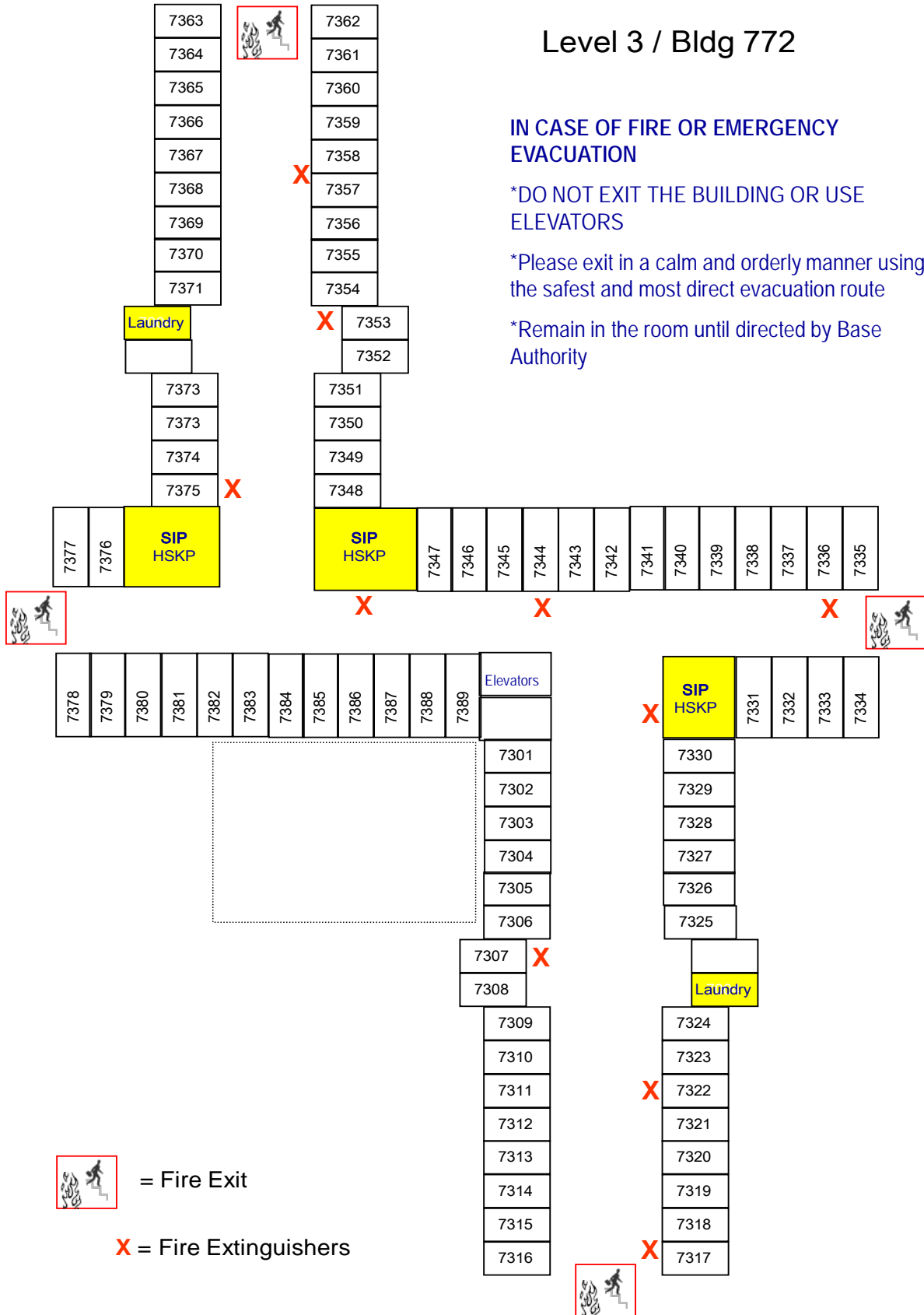
Level 3 / Bldg 772

IN CASE OF FIRE OR EMERGENCY EVACUATION

*DO NOT EXIT THE BUILDING OR USE ELEVATORS

*Please exit in a calm and orderly manner using the safest and most direct evacuation route

*Remain in the room until directed by Base Authority



= Fire Exit

X = Fire Extinguishers

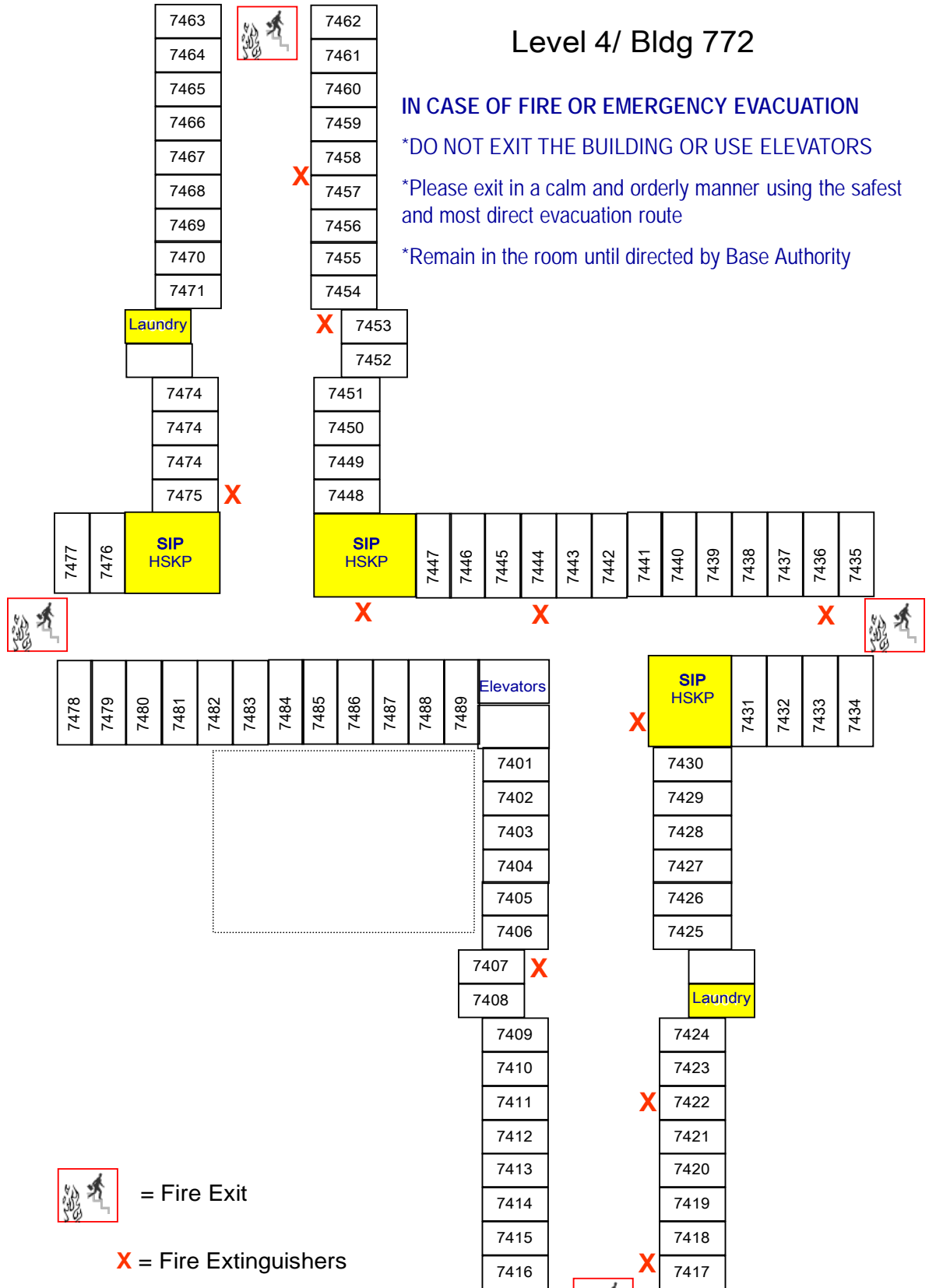
Level 4/ Bldg 772


IN CASE OF FIRE OR EMERGENCY EVACUATION

*DO NOT EXIT THE BUILDING OR USE ELEVATORS

*Please exit in a calm and orderly manner using the safest and most direct evacuation route

*Remain in the room until directed by Base Authority



 = Fire Exit

X = Fire Extinguishers

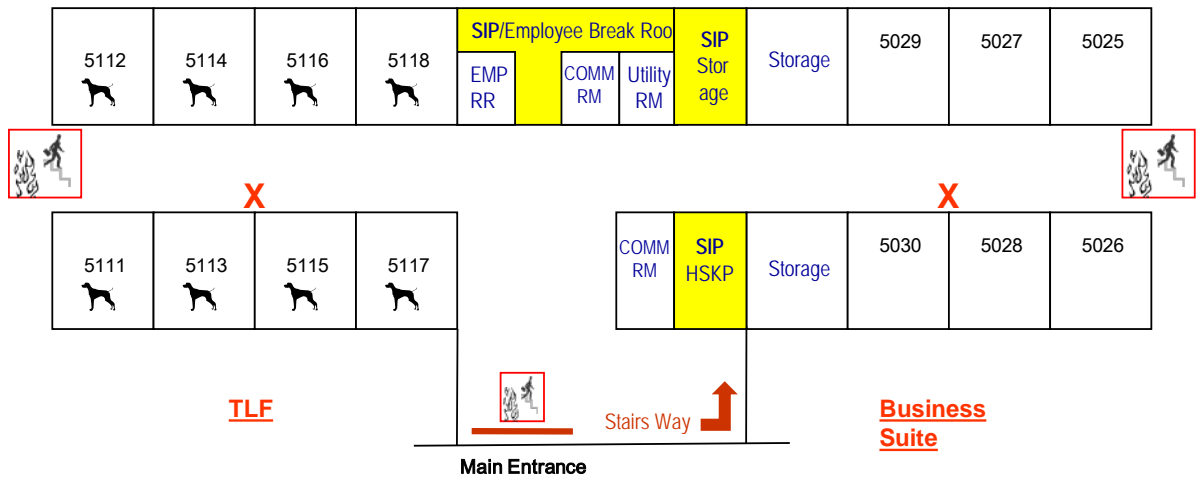
Level 1 / Bldg 709

WHEN SHELTER-IN PLACE ORDER HAS BEEN GIVEN

*DO NOT EXIT THE BUILDING OR USE ELEVATORS

*Please exit in a calm and orderly manner using the safest and most direct evacuation route

*Remain in the room until directed by Base Authority



PARKING LOT



= Fire Exit



= Fire Extinguishers



= Pet Rooms: Room 5111 - 5118

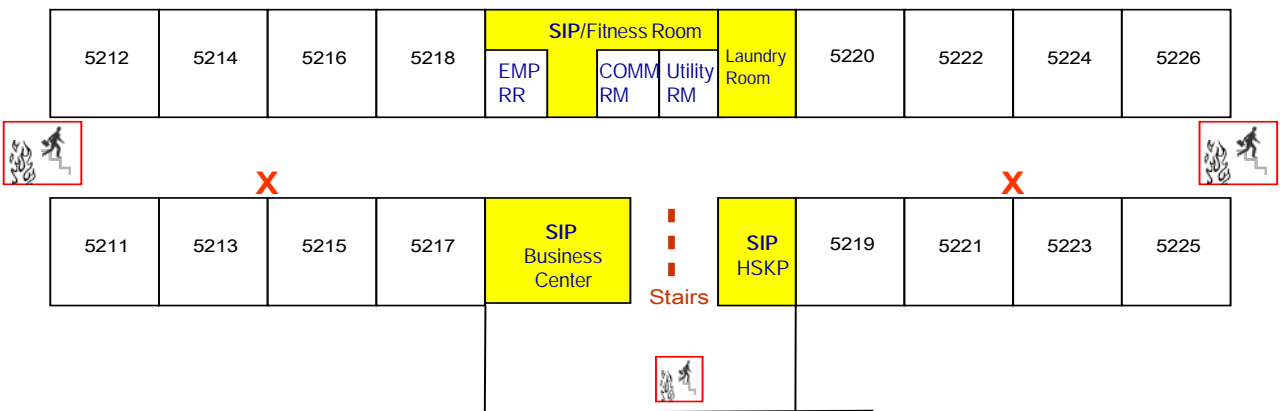
Level 2 / Bldg 709


WHEN SHELTER-IN PLACE ORDER HAS BEEN GIVEN

*DO NOT EXIT THE BUILDING OR USE ELEVATORS

*Please exit in a calm and orderly manner using the safest and most direct evacuation route

*Remain in the room until directed by Base Authority



 = Fire Exit

X = Fire Extinguishers

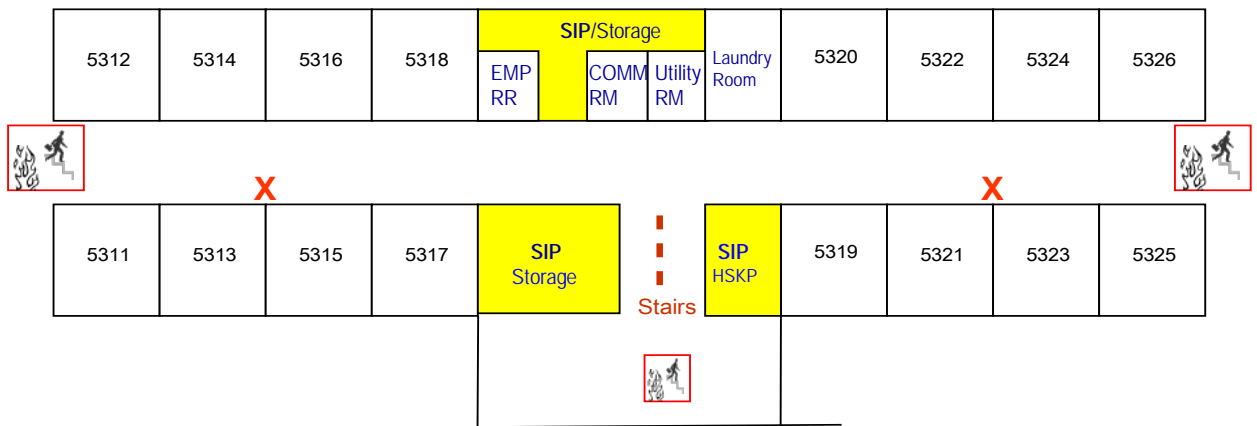
Level 3 / Bldg 709

WHEN SHELTER-IN PLACE ORDER HAS BEEN GIVEN

*DO NOT EXIT THE BUILDING OR USE ELEVATORS

*Please exit in a calm and orderly manner using the safest and most direct evacuation route

*Remain in the room until directed by Base Authority



= Fire Exit

X = Fire Extinguishers

HISTORY OF OSAN AIR BASE



Prior to the invasion of the Republic of Korea by the North Korean communists in 1950, the area, now designated Osan Air Base, consisted of four villages and a large number of rice paddies. Originally designated K-55, the base was redesignated as Osan Air Base in 1956. The base was not named for any of the villages on the site. The first base commander named the base Osan, as it was the only village shown in this region on military maps and because it was easy to pronounce. The word Osan means “Crow Hill.”

The four villages that were moved to make room for the base were Jeuk-Bong-Ri, Chang-Deung-Ri, Shin-Ya-Rin, and Ya-Rin. A large Gingko tree that was in the village square of one of these villages still stands on a hill in the present Osan Air Base golf course and is a protected national landmark.

The Republic of Korea government allowed the U.S. Air Force to purchase 1,250 acres in 1952 to expand the base. A fifth unnamed Korean village was relocated in 1953 to enlarge the compound area for the location of Headquarters, 5th Air Force, which maintained an advanced headquarters until the arrival of the 314th Air Division in 1954. Elements of the 839th, 841st, and 417th Engineering Battalions took part in constructing the base. The rolling hills were transformed into a base of operations and the runway was completed in less than six months. The runway opened in December 1952, with the advance elements of the 18th Fighter Bomb Wing (18 FBW) arriving for duty late in the month. The 18 FBW provided air operations in support of United Nations ground forces during the Korean conflict.

Following the war, Osan Air Base was transitioned to standby status and hosted only temporary duty or transient units involved in Pacific Air Forces tactical operations. During that time, most facilities fell into disrepair. Concrete surfaces were restored in 1957 and total renovation projects were completed in 1958 when the base became a permanent peacetime installation.

Osan has hosted many types of fighter aircraft in its history, from the F-86s during the Korean War, F-100s in the late 1950's, F-105s from 1962-1963, F-106s from 1968-1969, and F-4s in 1971. Today, the host 51st Fighter Wing flies the A-10 and F-16 fighter aircraft.

The 51st Fighter Wing actually relocated from Naha Air Base, Okinawa to Osan Air Base on 1 November 1971, and assumed all support responsibilities for base units and sites. The wing was redesignated as the 51st Composite Wing on 30 September 1974. On 1 July 1982, the 51st Composite Wing was redesignated as the 51st Tactical Fighter Wing. Ten years later, in February 1992, the wing was redesignated as the 51st Wing. On 1 October 1993, the 51st Wing became the 51st Fighter Wing.