



THE NEW STANDARD IN POWERSPORTS CLUTCHES



TOMARENGINEERING.COM • 888.258.8241

TABLE OF CONTENTS



2-Cycle Clutches
PAGES 2-5



4-Cycle Clutches
PAGES 6-9



Drive Sprockets
PAGES 10-11



Accessories
PAGE 12-13



Motorcycle Clutches
PAGES 14



Merchandise
PAGE 15

WWW.TOMARENGINEERING.COM



ABOUT US

About Us

Tomar™ Racing Clutches by Quarter Master® is the industry-leading oval and sprint racing kart and mini MX clutch manufacturer. Utilizing vast experience and cutting-edge technology, including the latest CAD, 3D modeling and FEA processes, Tomar™ has become the most trusted name in both 2- and 4-cycle wet and dry design kart clutches, as well as in 50cc motocross racing wet design clutches. Along with its full line of clutch components, Tomar™ offers a variety of ancillary products such as tools, installation kits, drive sprockets and other accessories. Over the years, Tomar™ has built its name on superior products backed by personalized, one-on-one service and technical support offered directly to racers, as well as through an established dealer network.

Meanwhile, Quarter Master® began operations in 1958, and since that date, its products have enjoyed a history of track-proven results. Quarter Master® products are built to exceed racers' demands for reliability, high performance and durability. The company's clutches and driveline components can be found in applications including dirt and asphalt circle track, road racing, drift, rally and even international open wheel.

Since 2011, Tomar™ and Quarter Master® have been on a shared mission to be industry leaders in building products that provide racers with what they value most – exceptional on-track performance.



[TD] SERIES
THERMAL DISSIPATION



Patent No. 7,810,623 B2

WHAT IS TD TECHNOLOGY (PATENTED)

TD Technology is a Tomar™-exclusive, patented design technology that allows the TD series of clutches to withstand higher stall speeds by better dissipating harmful heat build-up. This is accomplished with a design that ensures friction surfaces are isolated to friction discs and rotors, which only see compression loads. Thus, the pressure plate can't warp because all of the clutch components are in compression. The result is a clutch that won't fade at the end of the race and can withstand unprecedented stall speeds.

2-CYCLE CLUTCHES

TD22

With a diameter of just 2 3/8", the TD22 is the smallest clutch available anywhere. Offering the lowest moment of inertia possible, these 2-cycle clutches are still capable of handing stall speeds up to 8800 RPM. Engineered specifically to fit Yamaha KT100 applications, and utilizing patented Thermal Dissipation (TD) Technology, these clutches can stand up to harsh racing conditions. TD Technology ensures friction surfaces are isolated to friction discs and rotors, which only see compression loads. Thus, the pressure plate can't warp because all of the clutch components are in compression. As a result, these clutches do not lose surface area and won't fade at the end of the race. This also allows the dry clutch to endure unprecedented stall speeds without fears of preventative failure.

- Smallest kart clutch available on the market today; offers the lowest moment of inertia possible
- Fully adjustable stall speeds include 7800-8800 RPM, 5000 RPM Max or 6400-7200 RPM, depending on spring/weight combination
- Patented TD Technology ensures friction surfaces are isolated to friction discs & rotors to avoid warping, drastically increasing durability & service life over the competition
- Engineered for Yamaha KT100 applications competing on sprint or oval tracks, dirt or asphalt



Sprocket	TD22 2-Disc			TD22 3-Disc
	6400-7200 RPM	5000 RPM	7800-8800 RPM	6400-7200 RPM
	#35	#35	#35	#35
10T	371040	371050	371030	371060
11T	371041	371051	371031	371061
12T	371042	371052	371032	—
13T	—	371053	371033	—



371030
Patent No. 7,810,623 B2

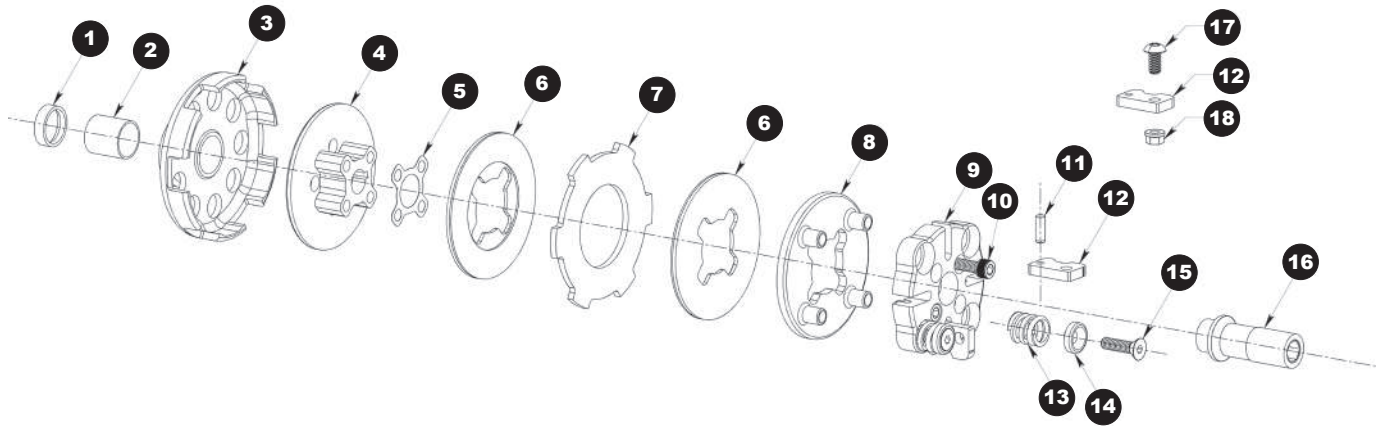


Fig.	Description	Part #
1	10T Spacer .170	330118
	10T Spacer .180	330119
	10T Spacer .190	330117
	11T-12T Spacer .170	330128
	11T-12T Spacer .180	330129
2	Bronze Bushing	330120
3	Drum 10T - 2-Disc	372110
	Drum 11T - 2-Disc	372111
	Drum 12T - 2-Disc	372112
	Drum 13T - 2-Disc	372113
	Drum 10T - 3-Disc	372210
4	Drive Hub - 2-Disc	372100
	Drive Hub - 3-Disc	372108
5	Shim, .005	372106
6	Friction Disc - 1/2 Lining	370004
	Friction Disc	370005
7	Rotor, .080	372102

Fig.	Description	Part #
	Rotor, .085	372101
8	Pressure Plate	372103
9	Weight Support	372104
10	Screw, Weight Support	900413
11	Dowel Pin	330027
12	Lever	372105
13	Spring, .085	328200
14	Retainer	334700
15	Screw, Adjusting	334800
16	Starter Nut	361007
17	Screw, Button Head	900438
18	Nut, Weight Kit	900420

Accessories	
Adjusting Tool	329700
Wrench, Clutch	379800
Puller, TD22	329600

2-CYCLE CLUTCHES

TD23

As a leader in the karting world, Tomar™ revolutionized the industry with its TD23 Series Clutches. Designed for 2-cycle engines and available in a variety of setups based on class, these 3" clutches are the perfect choice for applications competing on either road courses or oval tracks. They feature patented Thermal Dissipation (TD) Technology and are engineered with two or three friction discs (dependent upon application) to handle harsh racing conditions. As a result, the clutch doesn't lose surface area and won't fade at the end of the race due to heat buildup.

- Engineered with 2 or 3 friction discs (dependent upon application) to handle harsh racing conditions
- Perfect choice for all Yamaha KT100 classes competing on sprint or oval tracks, dirt or asphalt
- Patented TD Technology drastically increases durability & service life

Sprocket	TD23 2-Disc 8200-9200 RPM		TD22 3-Disc 8800-9900 RPM	
	#35	#219	#35	#219
9T	361039	—	361049	—
10T	—	361030	—	361040
11T	—	361031	—	361041
12T	—	361032	—	361042
13T	—	—	—	361043
14T	—	—	—	361044
15T	—	—	—	361045
16T	—	—	—	361046

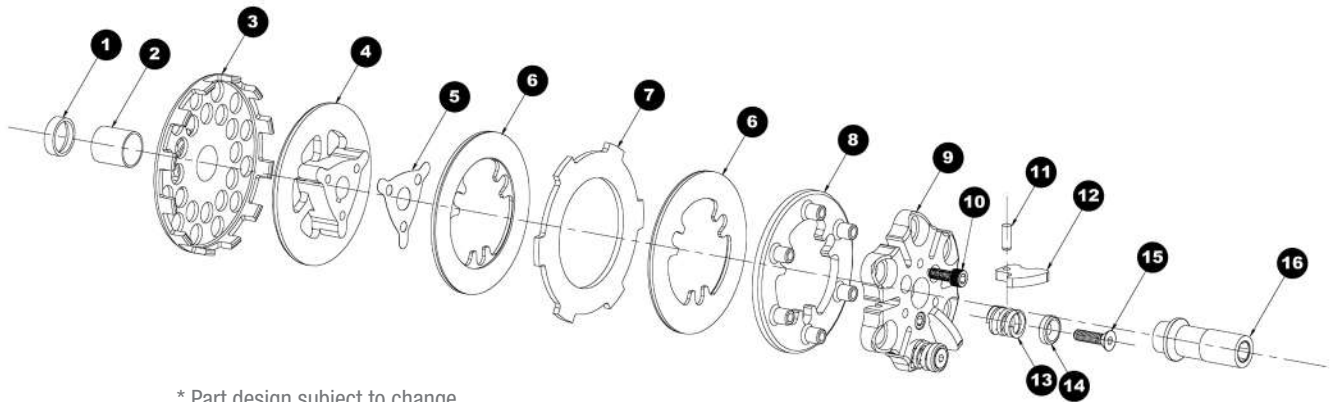


361041
Patent No. 7,810,623 B2



361031
Patent No. 7,810,623 B2





* Part design subject to change

Fig.	Description	Part #	
1	Spacer .170	330118	
	Spacer .180	330119	
	Spacer .190	330117	
2	Bronze Bushing	330120	
3	Drum 10T – 2-Disc	362110	
	Drum 11T – 2-Disc	362111	
	Drum 12T – 2-Disc	362112	
	Drum 10T – 3-Disc	362020	
	Drum 11T – 3-Disc	362021	
	Drum 12T – 3-Disc	362022	
	Drum 13T – 3-Disc	362023	
	Drum 14T – 3-Disc	362024	
	Drum 15T – 3-Disc	362025	
	Drum 16T – 3-Disc	362026	
	9T-35 – Drum – 3-Disc	362029	
	4	Drive Hub – 2-Disc	362100
		Drive Hub – 3-Disc	362103

Fig.	Description	Part #
5	Shim, .005	361006
6	Friction Disc	300004
	Friction Disc – 3-Disc	300005
7	Rotor, .080	362102
	Rotor, .085	362105
	Rotor, .090	362104
	Rotor, .095	362106
8	Pressure Plate	362101
9	Weight Support	361004
10	Screw, Weight Support	900413
11	Dowel Pin	330027
12	Lever	361005
13	Spring, .085	328200
	Spring, .091	313000
14	Retainer	334700
15	Screw, Adjusting	334800
16	Starter Nut	361007

Accessories	
Adjusting Tool	329700
Wrench, Clutch	329800
Puller, Clutch	329900

4-CYCLE CLUTCHES

TD43

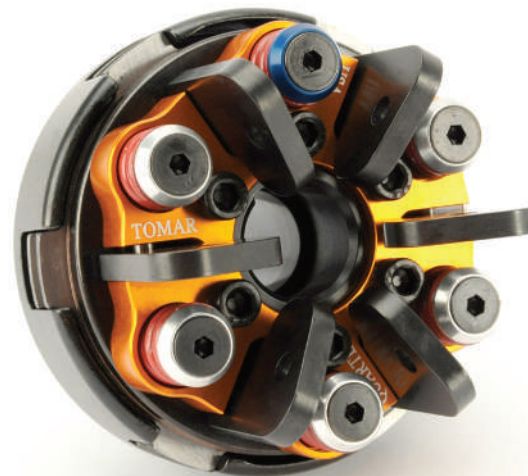
Tomar™ changed the world of karting with its 3" TD43 Series Clutches. TD43 Clutches are designed for 4-cycle engines and are available in 2- or 3-disc setups for light weight and durability based on class. TD Clutches are the perfect choice for applications competing on dirt or asphalt on either road courses or oval tracks. The 2-disc versions are built for Junior, Stock Lite and Stock Medium classes (Flathead and Animal), while 3-disc clutches are designed for Stock Heavy, Modified and Unlimited classes.

Sprocket	TD43 2-Disc			
	Stock/Stock Animal		Junior	
	#35	#219	#35	#219
11T	482011	—	482031	—
12T	482012	—	482032	—
13T	482013	—	482033	—
14T	482014	—	482034	—
15T	482015	—	482035	—
16T	482016	—	482036	—
17T	482017	482217	482037	—
18T	482018	482218	482038	—
19T	482019	482219	482039	—
20T	482020	—	482040	—
21T	482021	—	482041	—
22T	482022	—	482042	—
23T	482023	—	482043	—



482017
Patent No. 7,810,623 B2

Sprocket	TD43 3-Disc	
	Flathead Modified	Animal Modified
	#35	#35
11T	482051	482471
12T	482052	482472
13T	482053	482473
14T	482054	482474
15T	482055	482475
16T	482056	482476
17T	482057	482477
18T	482058	482478
19T	482059	482479
20T	482060	482480
21T	482061	482481
22T	482062	482482
23T	482063	482483



482055
Patent No. 7,810,623 B2

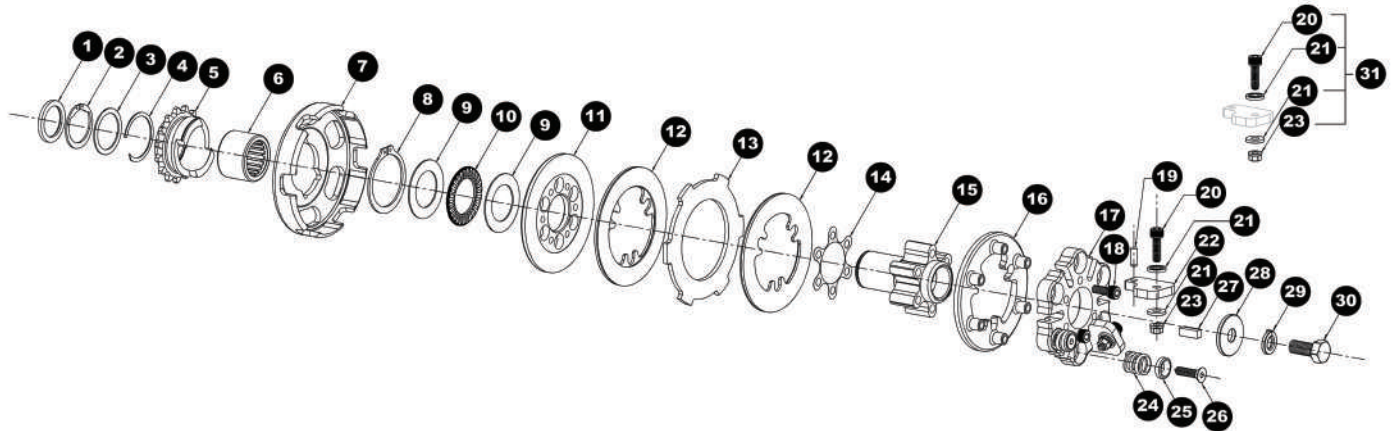


Fig.	Description	Part #
1	Spacer, Crankshaft	490121
	Spacer, Crankshaft 11T	490122
2	Snap Ring, External	490113
3	Thrust Washer, Outer 12T-23T, .030 Thick	490114
	Thrust Washer, Outer 12T-23T, .050 Thick	490129
4	Retaining Ring, Outer	490115
5	Sprocket Assembly (9T-23T)	
6	Bushing, Bronze (12T & 13T / 35)	490116
	Bearing (14T-35 and up)	490117
	Bushing, Bronze 11T	480999
7	Drum, Steel TD43-2-Disc	482115
	Drum, Steel TD43-3-Disc	482116
8	Snap Ring, Sprocket Internal	490118
9	Thrust Washer, Internal	490119
	Thrust Washer, Internal 11T	490123
10	Thrust Bearing, Internal	490120
	Thrust Bearing, Internal 11T	490124
11	Fixed Plate, TD43	482101
12	Friction Disc, 1/2 Lining, TD43	400004
	Friction Disc, TD43-3 (for 3-Disc only)	400005
13	Rotor, .085	482104
	Rotor, .080	482105
	Rotor, .090	482106
	Rotor, .095	482118
14	Shim, .003	482108

Fig.	Description	Part #
15	Drive Hub TD43-3-Disc	482100
	Drive Hub, TD43-3-Disc 11T	482111
	Drive Hub, TD43-2-Disc 11T	482112
	Drive Hub TD43-2-Disc	482113
16	Pressure Plate TD43	482102
17	Weight Support TD43	482109
	Weight Support TD43 Modified	482103
18	Bolt, Weight Support 2-Disc	900393
	Bolt, Weight Support 3-Disc	900392
19	Dowel Pins, Lever	490112
20	Bolt, Weight Kit	900413
21	Washer, Weight Kit	900418
22	Lever, TD43 Stock/Stock Animal	482110
	Lever, TD43 Modified	482097
23	Nut, Weight kit	900420
24	Spring, .085 Black	465000
	Spring, .091 Red	464900
	Spring, .093 Yellow	464800
25	Retainer, Adjusting Screw	334700
26	Screw, Adjusting	334800
27	Key, 3/16 Special	900417
28	Flat Washer, 5/16 Special	900434
29	Lock Washer, 5/16	900415
30	Bolt, 5/16	900416
31	Weight Kit (Items 20, 21, 23)	482117

4-CYCLE CLUTCHES

TD44

Available in 2-, 3- or 4-disc configurations for 3/4" and 1" crankshafts, Tomar™ TD44 Clutches can hold up to 60 horsepower and are designed for Animal, Modified, Clone, Stock, Flathead and Jackshaft applications, as well as for Jr. Dragsters and Mini Bikes. The clutches use Thermal Dissipation (TD) technology, allowing them to run cooler at higher stall speeds that would typically damage other inferior clutches. This patented technology ensures that friction surfaces are isolated to the disc and rotor, thereby eliminating warping and resulting in fade-free performance. Tomar™ TD44 Clutches are designed with 9 to 25 teeth in the clutch assembly. They are perfect for ovals and road courses on dirt and asphalt.

TD44 2-Disc				
Sprocket	Stock		Modified	
	#35	#219	#35	#219
9T	466309	—	466339	—
10T	466310	—	466340	—
11T	466311	—	466341	—
12T	466312	—	466342	—
13T	466313	—	466343	—
14T	466314	—	466344	—
15T	466315	466615	466345	466635
16T	466316	466616	466346	466636
17T	466317	466617	466347	466637
18T	466318	466618	466348	466638
19T	466319	466619	466349	466639
20T	466320	466620	466350	466640
21T	466321	466621	466351	466641
22T	466322	466622	466352	466642
23T	466323	466623	466353	466643
24T	—	466624	—	466644
25T	—	466625	—	466645

Sprocket	TD44 3-Disc		TD44 4-Disc
	Flathead/Clone #35	Animal #35	Jackshaft #35
9T	466539	466509	466409
10T	466540	466510	466410
11T	466541	466511	466411
12T	466542	466512	466412
13T	466543	466513	466413
14T	466544	466514	466414
15T	466545	466515	466415
16T	466546	466516	466416
17T	466547	466517	466417
18T	466548	466518	466418
19T	466549	466519	466419
20T	466550	466520	466420
21T	466551	466521	466421
22T	466552	466522	466422
23T	466553	466523	466423
24T	—	—	466424
25T	—	—	—

* Call for details on Jr. Dragsters and Mini Bikes.



466212
Patent No. 7,810,623 B2

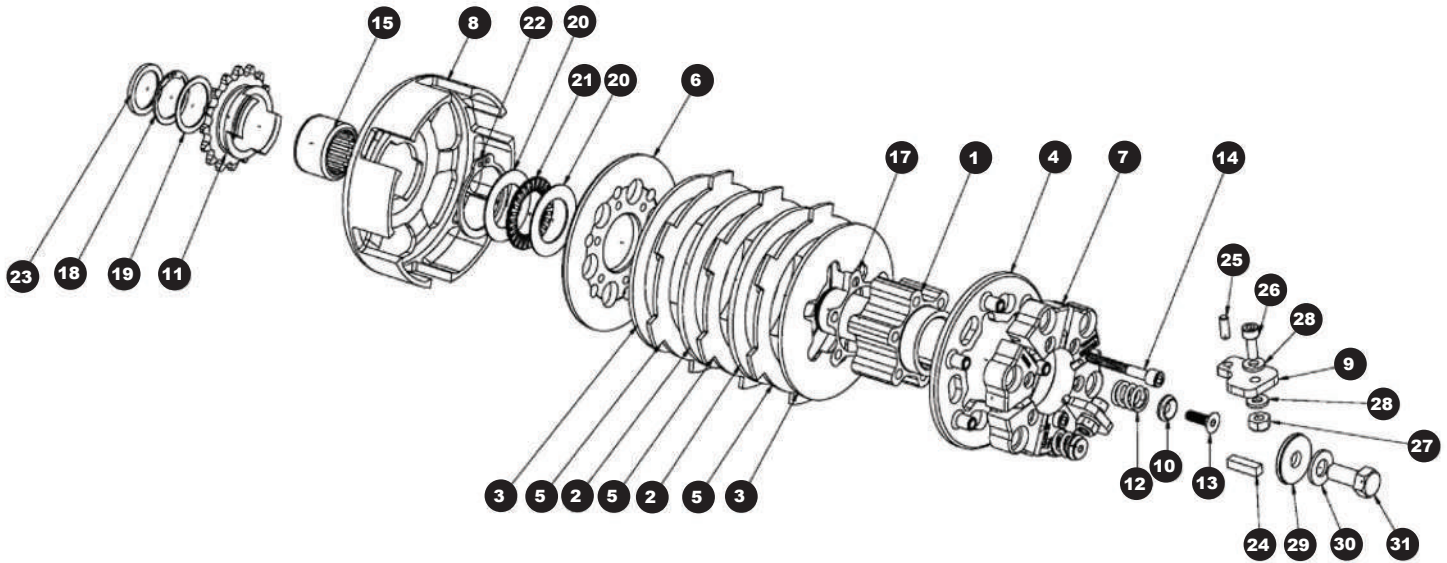


Fig.	Description	Part #
1	Drive Hub, 2-Disc	466125
	Drive Hub, 3-Disc	466122
	Drive Hub, 4-Disc	466133
2	Friction Disc	400008
3	Friction Disc, 1/2	400009
4	Pressure Plate	466102
	Rotor, .085	466103
	Rotor, .090	466104
	Rotor, .095	466105
5	Rotor, .100	466106
	Fixed Plate	466101
6	Weight Support	466109
	Drum, 2-Disc	466126
7	Drum, 3-Disc	466132
	Drum, 4-Disc	466112
8	Lever	466110
9	Retainer, Adjusting Screw	334700
10	Drive Sprocket Assembly	see page 11
	Spring, .085 Black	465000
11	Spring, .091 Red	464900
	Screw, Adjustment	334800

Fig.	Description	Part #
12	Bolt, Weight Support, 2-Disc	900393
	Bolt, Weight Support, 3-Disc	900392
	Bolt, Weight Support 4-Disc	900389
13	Bearing, 14T-35 and up	490117
	Bushing, Bronze (12T & 13T-35)	490116
14	Bushing, Bronze 11T	480999
	Shim, .003	466130
	Shim, .010	466131
15	Snap Ring	490113
16	Thrust Washer	490114
17	Thrust washer, Internal	490119
	Thrust bearing, Internal	490120
18	Circlip, Sprocket	490118
19	Spacer, Crankshaft	490121
20	Spacer, Crankshaft, 11T	490122
21	Key, 3/16 special	900417
22	Dowell Pin	490112
23	Weight, Lever Bolt	900419
24	Nut	900420
25	Washer, Weight	900418
26	Flat Washer	900414
27	Lock Washer	900415
28	Bolt, 5/16	900416

DRIVE SPROCKETS

1

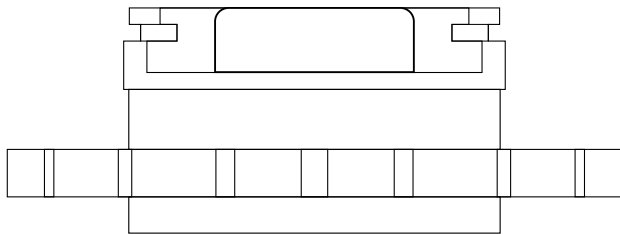
The external snap ring's function is to keep the drive sprocket on the drum. Rated at 16000 RPM and designed for high-thrust loads, this snap ring is sure to do the job.



2

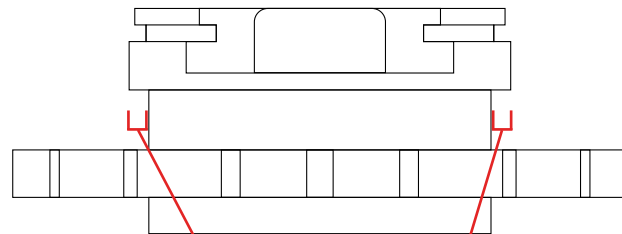
Designed to captivate the needle bearing and eliminate movement, this feature includes two components. An I.D. lip (.020" x .030") machined directly into the bore of the sprocket stops the bearing from moving inward. A spring steel spiral ring eliminates movement outward.

Conventional



* Conventional style drive sprockets are used for all Tomar™ Clutches.

H-Style



Narrower sprocket cross-section

* H-Style is designed as a replacement sprocket for a Horstman Clutches.



DRIVE SPROCKETS

The Ultimate in Performance and Reliability

Tomar™ has set the industry standard in drive sprocket performance by adding an internal diameter lip and spiral ring that captivate the needle bearing and minimize movement. Along with an external snap ring that keeps the sprocket on the drum and increases reliability, all drive sprockets from Tomar™ feature CNC-machined teeth with a corrosion-resistant finish. Drive sprockets are available with either conventional or H-style mounting options.

- I.D. lip and spiral ring captivate the needle bearing
- External snap ring caps sprocket on drum and increases reliability
- CNC-machined teeth feature a corrosion-resistant finish

Sprocket	Conventional Drive Sprockets	
	#35	#219
9T	481039A	—
10T	481040A	—
11T	490131A	—
12T	490132A	—
13T	490133A	—
14T	490134A	—
15T	490135A	490155A
16T	490136A	490156A
17T	490137A	490157A
18T	490138A	490158A
19T	490139A	490159A
20T	490140A	490160A
21T	490141A	490161A
22T	490142A	490162A
23T	490143A	—

Sprocket	H-Style	
	#219	
11T	490131HA	
12T	490132HA	
13T	490133HA	
14T	490134HA	
15T	490135HA	
16T	490136HA	
17T	490137HA	
18T	490138HA	
19T	490139HA	
20T	490140HA	
21T	490141HA	
22T	490142HA	
23T	490143HA	



490137A



490138HA

ACCESSORIES

Cool Blue Clutch Coolant

Cool Blue Clutch Coolant from Tomar™ is specifically formulated to keep clutch parts clean and cool in higher temperature oval and sprint racing kart and MX bike clutches. Containing a proprietary mixture of three synthetics and two friction modifiers with an anti-foaming additive, Cool Blue Clutch Coolant resists thermal breakdown and keeps components clean and free of residual carbon deposits to prolong the life of your 2-cycle kart and motocross wet design clutch. In addition, an easy-pour bottle design that features clearly labeled measurement markings helps ensure the coolant ends up in your clutch and not on your garage floor.

Fluids	Part #
Cool Blue Clutch Coolant, Quart	600000
Cool Blue Clutch Coolant, Case	600001



600000

Clutch Hardware

Adjusting Retainers	Part #
Retainer	334700
Adjusting Screw/Retainer Set	334702
Adjusting Screw	334800



334702

Clutch Springs	Part #
Spring, .093	464800
Spring Set, .093 Yellow - 6 Springs	464802
Spring, Red .091	464900
Spring Set, .091 Red - 6 Springs	464902
Spring, .065	513400
Spring, .075	514200



464902

Clutch Tools	Part #
Clutch Wrench, TD22 and TD23	329800
Clutch Wrench, Stellar 4	400100
Clutch Puller, TD22 and TD23	329900



400100



ACCESSORIES

Clutch Hardware (continued)

Short Track Equipment	Part #	
Bolt, 5/16 24 X 1 1/4	900427	
Lock Washer	900415	
Sprocket, 11T Stellar (For Extension Kits Only)	481061	
Extended Drive Hub Kit		
<i>Kit made up of the following items</i>		
481036 - Spacer, 9T - 10T Stellar		
481042 - Drive Hub (For 2-Disc Stellar Stock / Modified Clutches)*		
481045 - Thrust Washer, Inner	481050	
481046 - Thrust Bearing		
481047 - Cir Clip		
481048 - Thrust Washer, Outer		
481038 - Flat Washer		
900415 - Lock Washer		
900432 - Bolt		
*One-piece design, for indoor racing		
Thrust Washer, Outer		481048
Snap Ring, External 9T-11T		481047
Thrust Bearing, Internal 9T-11T	481046	
Thrust Washer, Internal 9T-11T	481045	
Drive Hub (For 2-Disc Stellar Stock / Modified Clutches)	481042	
Bolt, 5/16 - 24 X 2	900432	



Description	Part #
Starter Nut, 4-Cycle	480600
Starter Nut, 4-Cycle - Metric	480700



MOTORCYCLE CLUTCHES

Holeshot Clutches

The Tomar™ Holeshot Series is specifically designed for maximum performance and durability in both stock and race-modified 50cc Mini MX bikes. The fully CNC-machined clutches utilize state-of-the-art materials and are manufactured to precision, race-quality tolerances. The friction disc is the latest technology capable of handling the higher temperatures created by the stall speeds of 50cc stock and modified two-stroke engines, as well as the hardcore abuse of racing usage. This combination provides a clutch that is capable of transferring the torque to the rear wheel for an incredible “holeshot” and performance that outlasts the competition.

- Compatible with popular Mini MX bikes used for racing & recreational riding
- Each clutch is engineered specifically for its application to maximize performance
- Designed to better transfer torque to the rear tire, which means less slippage & wasted horsepower while extending durability
- Friction disc utilizes state-of-the-art material capable of handling the higher temperatures created by the high stall speeds needed for racing
- CNC-machined parts manufactured to precise tolerances for unrivaled quality



560013

Application	TD43 2-Disc	
	Clutch Part #	Installation Kit
Cobra 50cc	560008	560009
Conti RX50	560011	560042
Factory Bike R12 Phan	560018	560012
KTM PRO JR & PRO SR	560013	560014
LEM R2 & R3	560010	560012
Polini X1 Works & X3 Works	560015	560016
PRC LX & RR	560019	560017



Installation Kits

The Holeshot Installation Kits include the components you need to quickly and correctly install your new Tomar™ clutch. Contents of these kits vary by application, but they usually include parts such as coolant, gasket, bolts, clutch wrench, etc.





MERCHANDISE

Logo T-Shirt

Show the karting world whose products you trust. This ice-gray Gildan Ultra Cotton t-shirt is made from 100% preshrunk cotton and features a unique Tomar™ logo and clutch design on the front. A smaller clutch image and the company website, TomarEngineering.com, make up the graphic on the upper back. Available in sizes Small-2XL.



Description	Part #
Logo T-Shirt	100

Logo Hat

This low-profile hat features a small Tomar™ logo on the left panel of the black cotton twill front, and has a soft gray mesh back with an adjustable strap so one size fits all. The words “By Quarter Master®” are embroidered on the back as well. This hat is comfortable, affordable and stylish, and won’t show dirt or grime so you can wear it to the track or the shop.



Description	Part #
Tomar™ Racing Clutches Hat	300C

Banners and Decals

Description	Part #
Banner	900800
Decal	900801
Trailer Decal	900802



90081

WARRANTY



WARRANTY

WARRANTY, DISCLAIMER, LIMITATION OF LIABILITY AND REMEDY: Seller warrants its products sold hereunder to be free from defects in material and workmanship provided that the products shall not have been altered or repaired after shipment to Buyer by anyone except Seller's authorized employees. Seller must be given an opportunity to make an investigation and inspection of any asserted defects which must be reported promptly in writing within ten days of discovery. Any claim will be evaluated by Seller on a case by case basis. EXCEPT FOR THE FOREGOING, IT IS EXPRESSLY AGREED THAT NO WARRANTY OF MERCHANTABILITY, OR ANY OTHER WARRANTY, EXPRESS OR IMPLIED OR STATUTORY, IS MADE BY SELLER HEREUNDER. SELLER'S ENTIRE AND EXCLUSIVE LIABILITY, WHETHER FOUNDED ON WARRANTY, CONTRACT, NEGLIGENCE OR OTHERWISE, AND BUYER'S EXCLUSIVE RIGHT AND SOLE REMEDY IS LIMITED TO REPAIR OR REPLACEMENT OF DEFECTIVE PRODUCTS, F.O.B. SELLER'S FACTORY, OR AT SELLER'S OPTION THE RETURN OF THE PURCHASE PRICE. SELLER SHALL IN NO EVENT BE LIABLE FOR ANY DAMAGES OF ANY KIND WHATSOEVER, WHETHER DIRECT, INDIRECT, INCIDENTAL, SPECIAL OR CONSEQUENTIAL, INCLUDING, WITHOUT LIMITATION, ANY DAMAGE OR INJURY TO PERSON OR PROPERTY, LOSS OF SALES OR PROFIT OR INCREASED COST OR EXPENSE.

PATENT WARRANTY: Seller shall indemnify Buyer to the extent stated below against any money judgement (including any settlement to which Seller consents) for infringement of a United States patent by reason of the use or sale of the products furnished hereunder in the form supplied (but not by reason of their use or sale and combination with one or more products not furnished hereunder), provided that Buyer notifies seller promptly in writing of all claims of infringement, and permits Seller, at this option, to defend or be represented by counsel in defense thereof and provide Seller with all cooperation and information necessary or helpful in defending or settling any such claim or suit. Seller's liability under the preceding sentence shall in no event exceed the purchase price of such products, nor shall Seller in any event be liable for any indirect, special or consequential damages, including, without limitation, loss of business or profit or injury to reputation. Notwithstanding the above, Seller shall not be liable for the infringement or claimed infringement of any patent arising out of the manufacture, sale or use of any products made in accordance with any or all designs, drawings, formulae or other specifications furnished by Buyer, and BUYER AGREES TO DEFEND AND HOLD SELLER HARMLESS AGAINST ANY AND ALL CLAIMS, DEMANDS OR JUDGEMENTS THEREFORE.

CUSTOMER SATISFACTION POLICY

It is our sincere policy to supply the customer with the proper product at all times. It will be necessary for the Buyer to use the Seller's catalog to assure the proper product for the Buyer's intended application. The Buyer has the final decision as to product choice; therefore, he or she assumes responsibility to judge proper part usage and all risks, liabilities and costs in connection therewith. If there is any doubt, please contact the factory for assistance.

Request for a Quarter Master® warehouse distributorship will be subjected to a formal process, including, but not limited to, credit and banking history verification, trade and industry references, potential geographic conflict with existing warehouse distributors, past trade practices, verification of dealer network and potential sales volume. Upon approval, terms will be COD-Company Check Acceptable until adequate sales and payment history is established to permit a formal review for open account status.

CONTACT US

Contact Us:

Tomar Inc.
510 Telser Road, Lake Zurich, IL 60047-1500
Phone: 847-540-8999 Fax: 847-540-0526
Toll Free: 888-CLUTCH-1 (888-258-8241)
Website: www.tomarengineering.com

Facebook

You can connect with other enthusiasts by liking Tomar™ on Facebook! Stay up-to-date on the latest company and industry news, interact with other fans and enter contests featuring great product giveaways. Visit facebook.com/TomarEngineering today.

CPGWinners.com

Want to see your Tomar™-equipped ride in lights? Point your browser to CPGWinners.com and upload as much information and as many photos of your vehicle as you would like. Your pride and joy will then be on display for the world to see!

CPG WINNERS



*Tomar™ is a proud member of the COMP Performance Group™ family.
Other CPG companies include:*



compcams.com
1.800.999.0853



tciauto.com
1.888.776.9824



fuelairspark.com
1.877.334.8355



racingheadservice.com
1.877.776.4323



zex.com
1.888.817.1008



inglese.com
1.866.450.8089



powerhouseproducts.com
1.800.872.7223



quartermasterusa.com
1.888.258.8241



raceshopconverters.com
1.888.264.2867

www.compperformancegroup.com



THE NEW STANDARD IN POWERSPORTS CLUTCHES

Tomar™ Racing Clutches by Quarter Master® leads the way in the development of kart and mini MX clutches and driveline products featuring revolutionary design, cutting-edge technology and unmatched reliability. Each one is built utilizing the latest engineering techniques by a group of driveline experts whose years of expertise are unequaled in the industry. The Tomar™ staff prides itself not only on its craftsmanship, however, but also on its commitment to offering one-on-one technical support and advice that is second to none. Tomar™ Clutches truly do set a new standard.

Tomar™ Racing Clutches

510 Telser Road • Lake Zurich, IL 60047

 [facebook.com/TomarEngineering](https://www.facebook.com/TomarEngineering)

Phone: 888.258.8241

www.tomarengineering.com



0 36584 26866 6

#TOM100-13

