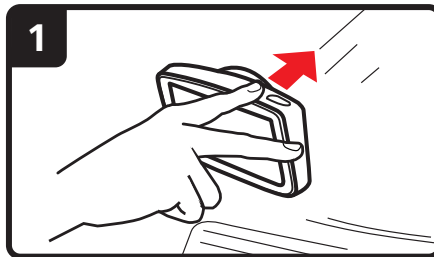

TomTom XL

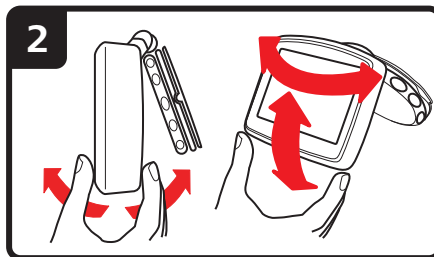
1. Getting started

Mounting your navigation device

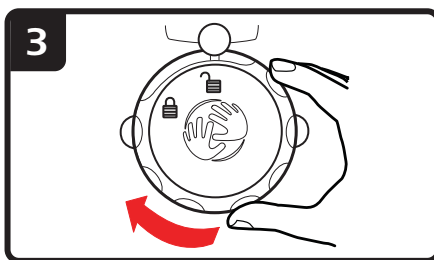
1. Push the EasyPort™ Mount on your TomTom XL against the windshield in your car.



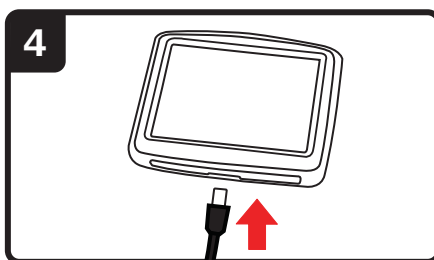
2. Adjust the angle of your device.



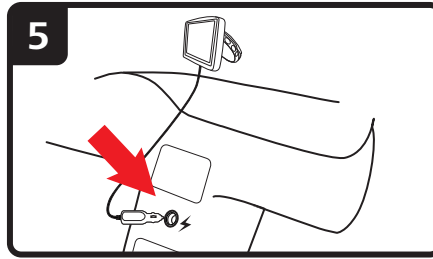
3. Lock the EasyPort Mount by twisting the base.



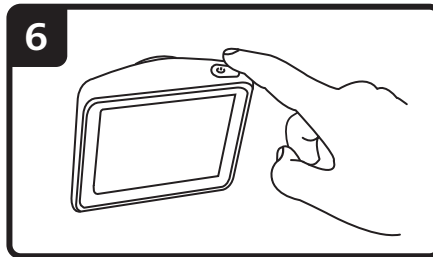
4. Insert the Car Charger into your device.



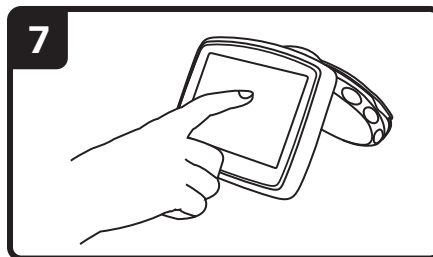
5. Insert the Car Charger into the cigarette lighter in your car.



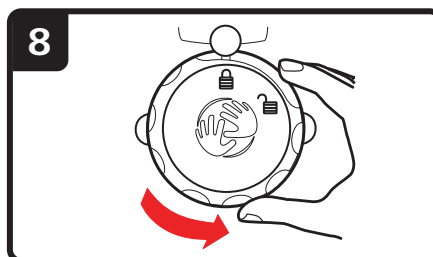
6. Switch your device on by pressing the On/Off button on the top of your device.



7. You now have to answer some questions to set up your device. Tap the screen to answer the questions.



8. To remove the Mount from your windshield, first unlock the EasyPort Mount, then gently pull one of the tabs. The Mount comes off of the windshield.



GPS reception

When you first start your TomTom XL navigation device, the device may need a few minutes to determine your GPS position and show your current position on the map. In the future, your position will be found much faster, usually within a few seconds.

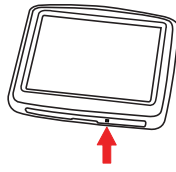
To ensure good GPS reception, you should use your device outdoors. Large objects such as tall buildings can sometimes interfere with reception.

Troubleshooting

In rare cases, your TomTom XL navigation device may not start correctly or may stop responding to your taps.

First, check that the battery is properly charged. To charge the battery, connect your device to the car charger. It can take up to 2 hours to fully charge the battery.

If this does not solve the problem, you can reset the device. First turn your device off and wait for at least 10 seconds. Then use a straightened paper clip, or something similar, to push the reset button. The reset button is on the bottom of your device.



2. Driving View



1. Your current position.
2. The name of the next street or street sign information.
3. Your speed and the speed limit, if known.
4. Navigation instruction for the road ahead.
5. The name of the street you are on.
6. Information about your trip: trip time, remaining distance and arrival time.

Tap this area to repeat the last spoken instruction and to change the volume.

Tap this panel on the status bar to switch between 2D and 3D views of the Driving View.

Tap this panel on the status bar to see a route summary.

3. Advanced Lane Guidance

Advanced Lane Guidance

Note: Lane guidance is not available for all junctions or in all countries.

Your TomTom XL helps you prepare for highway exits and junctions by showing the correct driving lane for your planned route.

As you approach an exit or junction, the lane you need is shown on the screen.



For some exits and junctions, the lane you need is shown in the status bar.



4. Main Menu

The Main Menu is the starting point for planning a route, looking at a map or changing your device settings.

To open the Main Menu from the Driving View, tap the center of the screen.



To return to the Driving View from the Main Menu, tap **done**.

Main Menu buttons

The following buttons are shown on the Main Menu.



Plan route

Tap this button to plan a new route.

This button is shown when you have not planned a route.



Change route

Tap this button to change the existing route or to plan a new route.

This button is shown when you have planned a route.



Browse map

Tap this button to look at the map.

Sound



sound

Tap this button to turn the sound off.



sound

Tap this button to turn the sound on.

Night /Day



night

Tap this button to set the night color scheme, which reduces the brightness of the screen and shows the map using dark colors.

This is useful when driving at night or in dark environments such as long tunnels.



day

Tap this button to set the day color scheme, which increases the brightness of the screen and shows the map using bright colors.

Options



options

Tap this button to adjust the settings for your device.

For more information, see the chapter **Options**.

Help



help

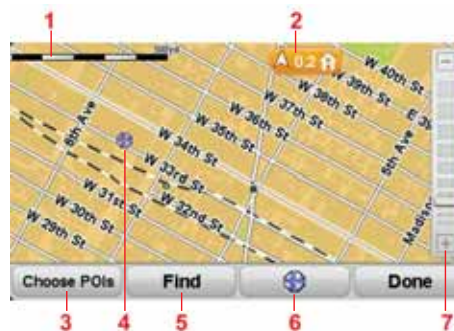
Tap this button to see contact details for local emergency services and other specialized services, such as hospitals and veterinary clinics. You can then plan a route to your chosen service center.

For more information, see the chapter **Help**.

5. Browse map

To look at the map in the same way as you might look at a traditional paper map, tap **Browse map** in the Main Menu.

You can move the map by touching the screen and sliding your finger across the screen.



1. Scale bar

2. Marker

Markers point to your current location, your home location and your destination. The marker shows the distance to the location.

Tap a marker to center the map on the location pointed to by the marker.

3. POI button

Tap this button to select which POIs are shown.

4. Cursor

5. Find button

Tap this button to find specific addresses.

6. Cursor button

Tap this button to plan a route to the cursor position, create a Favorite at the cursor position or find a Point of Interest near to the cursor position.

7. Zoom bar

Zoom in and out by moving the slider.

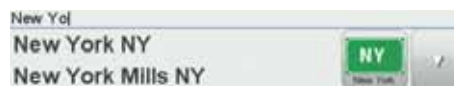
6. Planning a route

1. Tap the screen to open the Main Menu.
2. Tap **Plan route**.

You can enter an address in various ways, but we will enter the full address.

3. Tap **Address**.
4. Start to type the name of the town where your trip will begin and tap on the name when it appears in the list.

Tip: When you plan a route for the first time you are asked to select the country or state. Your choice is saved and used for all future routes. You can change this setting by tapping on the flag and selecting a new country or state.



5. Enter the street name and the house number, then tap **Done**.

Tip: Before you start to enter a street name, **City center** is shown at the top of the list. This is useful if you do not have an address and only need general directions.

6. Tap **Done**.

The route is planned and a summary of the route is shown.



7. Tap **Done**.

Your navigation device is ready to guide you to your destination.

Planning a route with a new starting point

To plan a route in advance of traveling or to use a starting point that isn't your current location, do the following:

1. Tap the screen to open the Main Menu.
2. Tap **Plan route**.

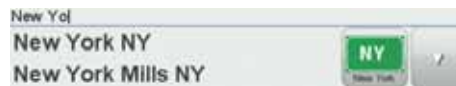
3. Tap **Depart from**.

You can enter an address in various ways, but we will enter the full address.

4. Tap **Address**.

Start to type the name of the town where your trip will begin and tap on the name when it appears in the list.

Tip: When you plan a route for the first time you are asked to select the country or state. Your choice is saved and used for all future routes. You can change this setting by tapping on the flag and selecting a new country or state.



5. Enter the street name and the house number, then tap **Done**.

Tip: Before you start to enter a street name, **City center** is shown at the top of the list. This is useful if you do not have an address and only need general directions.

6. Enter the destination address, then select **Now** when asked for the departure time and then tap **Done**.

The route is planned and a summary of the route is shown.



7. Tap **Done**.

Your navigation device is ready to guide you to your destination.

7. Finding alternative routes

Once you have planned a route, you may want to change something about the route, without changing your destination.

Reasons for changing a route

Maybe for one of these reasons:

- You can see a roadblock or a line of traffic ahead.
- You want to travel via a particular location, to pick someone up, stop for lunch or fill up with gas.
- You want to avoid a difficult intersection or a road you don't like.



Change route

Tap this button in the Main Menu to change the currently planned route.



Avoid roadblock

Tap this button if you can see a roadblock or a line of traffic ahead. You then have to choose how much of the route ahead you want to avoid.

Choose from the different options. Your XL recalculates your route avoiding the section of the route for the distance you selected.

Don't forget that once a new route is calculated, you may have to turn off the road you are on very soon.

If the roadblock disappears while you are traveling, you can tap **Recalculate original** to recalculate your original route. After you tap **Calculate alternative**, the button name changes to **Recalculate original**.



Calculate alternative

Tap this button to calculate an alternative to the route already planned. Your XL calculates another route, starting from your current location.

After you tap **Calculate alternative**, the button name changes to **Recalculate original**. If you later decide you want to travel along the original route, tap **Recalculate original**.

Apart from the roads near your position and near your destination, the new route uses totally different roads to reach your destination. This is an easy way of calculating a totally different route.



Tap this button to replan your original route.

This button is shown when you have changed your route by calculating an alternative.



Tap this button to change your route so that it passes a particular location, perhaps to pick someone up on the way. When you do this, a marker is shown on the map for the location you choose to travel via.

You choose the location you want to pass in the same way as you choose a destination. So you can select from all the same options, for example: **Address, Favorite, Point of Interest** and **Point on map**.

Your XL calculates a new route to your destination that passes the location you chose. Unlike your final destination, your XL does not inform you when you pass by this location.



Tap this button to plan a new route. When you plan a new route, the old one is deleted.



Tap this button to delete the current route.

8. Options

You can change the way your TomTom XL looks and behaves.

Tap **options** in the Main Menu.

Change voice



Change voice

Your navigation device is able to provide spoken instructions and warnings using voices which are stored on the device. Some voices have been recorded by actors and other voices are computer-generated.

The recorded voices are only used for spoken instructions while the computer voices are used for both spoken instructions and for reading aloud information stored on your map, such as street names.

To select a different voice on your device, tap **Change voice** in the Options menu or in the Voices and images menu. Then select a voice from the list. Computer voices are clearly marked.

You can add and remove voices using TomTom HOME.

Note: *If you select a recorded voice, this will only be able to announce commands, but not street names. If you would like street names to be announced, you will need to select a computer voice.*

Set clock



Set clock

Tap this button to select the time format and to set the time.

The easiest way to set the time is by tapping the **Sync** button. Your XL will then take the time from GPS information.

Note: *You can only use **Sync** if you have GPS reception, so you cannot set the clock in this way when you are indoors.*

*After using **Sync** to set the time, you may have to adjust the hours depending on your time zone. Your XL works out your time zone and always keeps the time correct using GPS information.*

Change language



Change language

Tap this button to change the language used for all the buttons and messages you see on your XL.

You can choose from a wide range of languages. When you change the language, you are also given the opportunity to change the voice.

Home and Favorites



Home and Favorites

Tap this button to manage your Home and Favorite locations.

For more information, see the chapter **Favorites**.

Voices and images



Voices and images

Tap this button to change your settings for voices and images.

For more information, see the chapter **Voices and images**.

Map corrections



Map corrections

Tap this button to make a correction to your map.

Advanced settings

To change the advanced settings on your TomTom XL, tap the **Advanced** button in the Options menu.

Set units



Set units

Tap this button to set the units used for the following measurements:

- Distance
- Time
- Latitude and longitude

Operate left-handed / Operate right-handed



Operate left-handed

Tap this button to move important buttons, for example, the **Done** and **Cancel** buttons as well as the zoom bar, to the left hand side of the screen.

To move the buttons back to the right hand side of the screen, tap **Operate right-handed**.

Keyboard preferences



Keyboard preferences

You use the keyboard to enter your destination or to find an item in a list, such as a POI.

Tap this button to select the type of keyboard characters you want to use, the size of the keys and the keyboard layout.

First select the type of keyboard from the following options:



You can select from two sizes:

- Large keyboard
- Small keyboard

Several keyboard layouts are available:

- ABCD keyboard
- QWERTY keyboard
- AZERTY keyboard
- QWERTZ keyboard

Switch map



Switch map

Tap this button to change the map you are using.

Reset factory settings



Reset factory settings

Tap this button to restore the factory settings to your TomTom XL.

All your settings, including your Home location and any Favorites, are deleted.

9. Favorites

About Favorites

Favorites are places that you often visit. You can create Favorites so that you don't have to enter the address every time you plan a route.

They don't have to be places you especially like, just useful addresses.

Creating a Favorite

From the Main Menu, tap **options** followed by **Home and Favorites** and then tap **Add Favorite**.

You can then select the location of the Favorite from the list below.

You can type your own name for the Favorite when the keyboard is shown. To enter the name, there's no need to delete the suggested name, just start typing.



Home

You can set your Home location as a Favorite.



Favorite

You cannot create a Favorite from another Favorite. This option will always be unavailable in this menu.

To rename a Favorite, tap **Home and Favorites** then **Manage Favorites** in the Options menu.



Address

You can specify an address to be a Favorite.



Recent destination

Select a Favorite location from a list of places you have recently used as destinations.



Point of Interest

You can add a Point of Interest (POI) as a Favorite.

Does it make sense to do this?

If you visit a POI you particularly like, for example a restaurant, you can add it as a Favorite.

To add a POI as a Favorite, tap this button, then do the following:

1. Narrow your choice of POIs by selecting the area where the POI is.

You can select one of these options:

- **POI near you** - to search from a list of POIs near your current position.
- **POI in city** - to choose a POI in a particular town or city. You have to specify a town or city.
- **POI near Home** - to search from a list of POIs near your Home location.

If you are currently navigating to a destination, you can also select from a list of POIs which are on your route or near your destination. Choose one of these options:

- **POI along route**
- **POI near destination**

2. Select the category of POI.

Tap the category of POI if it is shown or tap the arrow to choose from the complete list.

Tap **Any POI category** to search for a POI by name.



Point on map

Tap this button to create a Favorite using the map browser.

Select the location of the Favorite using the cursor, then tap **Done**.

Using a Favorite

You will normally use a Favorite to plan a route somewhere without having to enter the address. To plan a route to a Favorite location, do the following:

1. Tap the screen to open the Main Menu.
2. Tap **Plan route** or **Change route**.
3. Tap **Favorite**.
4. Select a Favorite from the list. This will be your destination.
5. Select **Now**.
6. If your current location is unknown you are asked if you want to wait until the location is known or if you want to plan a route using your last known position. For this example select **Plan using last known position**, then tap **Done**.

The route is planned and a summary of the route is shown.

7. Tap **Done**.

Your navigation device is ready to guide you to your destination.

Changing the name of a Favorite

1. Tap the screen to bring up the main menu.
2. Tap **options** to open the Options menu.
3. Tap **Home and Favorites**.
4. Tap **Manage Favorites**.
5. Tap the Favorite you want to rename.
6. Tap **Rename**.

Deleting a Favorite

1. Tap the screen to bring up the main menu.
2. Tap **options** to open the Options menu.
3. Tap **Home and Favorites**.
4. Tap **Manage Favorites**.
5. Tap the Favorite you want to delete.
6. Tap **Delete**.

10. Points of Interest

Points of Interest or POIs are useful places on the map. Here are some examples:

- Restaurants
- Hotels
- Museums
- Parking garages
- Gas stations

*Note: Tap **Map corrections** in the Options menu to report missing POIs or edit existing POIs.*

Navigating to a POI

You can use a POI as your destination. For example, if you are traveling to an unfamiliar city, you could choose a parking garage POI as your destination.

1. Tap the screen to bring up the Main Menu.
2. Tap **Plan route** in the Main Menu.
3. Tap **Point of Interest**.
4. Narrow your choice of POIs by selecting the area where the POI is located.

You can select one of these options:

- **POI near you** - to choose from a list of POIs near to your current location.
- **POI in city** - to find a POI in a particular town or city.
- **POI near Home** - to choose from a list of POIs near to your Home location.

You can select from a list of POIs which are along your route or close to your destination. Choose from one of these options:

- **POI along route**
- **POI near destination**

Tip: The last POI you searched for is also shown as a button in the POI menu.

5. Type the name of the town you want to visit and select the town when it appears in the list.
6. Select the category of POI or if you selected to **POI in city** then type the name of the city.
Tap the category of POI.

Tap the arrow to choose from the complete list of categories. Select the category from the list or start to type the name of the category and select it when it appears in the list.

7. Tap **Parking garage**.

8. From the list of POIs shown, select the POI you want to navigate to.

The table below explains the distances listed next to each POI.

POI near you	Distance from your current location
POI in city	Distance from the city center
POI near Home	Distance from your Home location
POI along route	Distance from a location on your route
POI near destination	Distance from your destination

If you know the name of the POI, tap **Find** and type the name. Select it from the list when it is shown.

The next screen shows more detailed information including the location of the POI on the map and the phone number of the POI, if available.

Tap **Select** to confirm you want to plan a route to this POI.

Once you have selected a POI, the route to the POI is calculated by your TomTom XL.

11. Voices and images

Voices

Your navigation device is able to provide spoken instructions and warnings using voices which are stored on the device. Some voices have been recorded by actors and other voices are computer-generated.

The recorded voices are only used for spoken instructions while the computer voices are used for both spoken instructions and for reading aloud information stored on your map, such as street names.

For information on downloading additional voices, visit tomtom.com.

Sound and volume control

To adjust the volume level, tap the left-hand section of the status bar in the Driving View.

The last spoken instruction is repeated and the volume level is shown.

Move the volume slider to adjust the volume.

To turn the sound on or off, tap **sound** in the Main Menu.

Set day color scheme



Set day color scheme

Tap **day** in the Main Menu to increase the brightness of the screen and show lighter colors on the map.

You can download additional color schemes using TomTom HOME.

Set night color scheme



Set night color scheme

Tap **night** in the Main Menu to reduce the brightness of the screen and show darker colors on the map.

You can download additional color schemes using TomTom HOME.

Change car symbol



Change car symbol

Tap this button to select the car symbol that shows your current position in the Driving View.

You can download additional car symbols using TomTom HOME.

Change voice



Change voice

Your navigation device is able to provide spoken instructions and warnings using voices which are stored on the device. Some voices have been recorded by actors and other voices are computer-generated.

The recorded voices are only used for spoken instructions while the computer voices are used for both spoken instructions and for reading aloud information stored on your map, such as street names.

To select a different voice on your device, tap **Change voice** in the Options menu or in the Voices and images menu. Then select a voice from the list. Computer voices are clearly marked.

You can add and remove voices using TomTom HOME.

Note: *If you select a recorded voice, this will only be able to announce commands, but not street names. If you would like street names to be announced, you will need to select a computer voice.*

Change start-up image



Change start-up image

Tap this button to select the start-up image which is shown every time you switch on the device.

You can download additional start-up images using TomTom HOME.

Change shutdown image



Change shutdown image

Tap this button to select the shutdown image which is shown every time you switch off the device.

You can download additional shutdown images using TomTom HOME.

12. TomTom Map Share™

With TomTom Map Share, you can correct errors on your map and share those corrections with other people in the TomTom Map Share community, as well as receiving corrections made by others.

If you find a street that has recently been blocked to traffic which was open before, you can use Map Share to correct your map and then share the correction with other Map Share users.

You can use Map Share to send and receive map corrections during the first year after the map's release date. This means that one year after the release date, you will no longer be able to send or receive map corrections for that version of the map. You will still be able to make corrections to your own map for use on your own device.

Note: *TomTom Map Share is not available in all regions. For more information, go to tomtom.com/mapshare.*

Map corrections

There are two types of map corrections:

- Corrections that are immediately shown on the map. These include, changing the traffic flow of a street, blocking or renaming a street and adding or editing POIs.

This type of change is immediately shown on your own map.

- Corrections that are reported to TomTom but not shown immediately on your map. These include, missing streets, errors in highway entrances and exits and missing rotaries.

This type of correction is investigated by TomTom and, once verified, is included in the next map release. These corrections are therefore not shared with the Map Share community.

Making a map correction

Important: For safety reasons, you should only mark a location when you are driving. Do not enter the full details of an error while you are driving.



Correct a map error

1. Tap **options** in the Main Menu then tap **Map corrections**.
2. Tap **Correct a map error**.
A list of possible map corrections is shown.
3. Select the type of correction you want to report.

Note: If you tap **Add missing POI** or **Report other error** you will be asked for some additional information before the next step.

4. Select the method you want to use for selecting the location of the correction.
5. When you have found the location, tap **Done**.
6. Enter correction or confirmation of correction now.

Receiving the latest map updates

When you connect your TomTom XL to your computer, TomTom HOME automatically downloads any available map corrections and sends the Map Share community any changes you have made.

Marking a map error while on the move

Important: For safety reasons, you should only mark a location when you are driving. Do not enter the full details of an error while you are driving.

If you notice an item on your map that needs attention, you can mark the location using the **Report** button and then enter the details when you are no longer driving.

To show the **Report** button in the Driving View, do the following:

1. Tap **options** in the Main Menu, then tap **Map corrections**.
2. Tap **Correction preferences**.
3. Tap **Next**, then tap **Continue**, then tap **Done**.
4. Select **Show report button**, then tap **Done**.

The **Report** button is shown on the left-hand side of the Driving View. After you mark a location, you can add more information about the change when you open the **Map corrections** menu.

For example, you are driving to a friend's house and you notice that the name of the street you are on is different from the one on your map. To report the change, tap the **Report** button and your XL will save your current location. You can then send the correction to TomTom Map Share when you have finished your trip.

TomTomMap Share community

To join the Map Share community, do the following:

1. Tap **options** in the Main Menu then tap **Map corrections**.
2. Tap **Download corrections made by others**.

3. Tap **Join**.

When you connect your XL to your computer, TomTom HOME downloads new corrections and sends your corrections to the Map Share community.

Important: Connect your device to your computer regularly and use TomTom HOME to check for new updates.

Correction preferences

The correction preferences set the way TomTomMap Share works on your device.

You can set the following preferences:

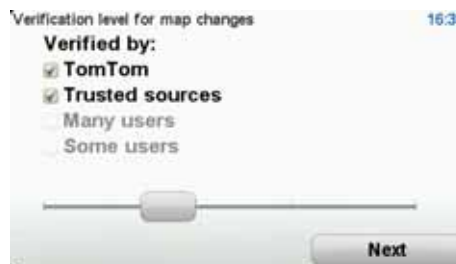
- Use the trust level slider to choose the types of corrections from the Map Share community you want to use on your maps.
- Decide if you want to share your corrections with others.
- Show or hide the report button in the Driving View.

To set your preferences, tap **options** in the Main Menu then tap **Map corrections**.

Accepting map corrections

You can set the type of map corrections you want to receive from the Map Share community to improve your maps.

To do this, tap **options** in the Main Menu. Then tap **Correction preferences** and move the slider to select the type of corrections you want.



There are four types of map correction:

- **TomTom** - only accept changes made by TomTom.
- **Trusted sources** - accept changes made by TomTom and by trusted users who have been verified by TomTom.
- **Many users** - accept changes made by TomTom, by trusted users who have been verified by TomTom and changes made by a high number of Map Share community members.
- **Some users** - accept changes made by TomTom, by trusted users who have been verified by TomTom and all changes that have been made by Map Share community members.

Types of map correction

There are several types of correction that you can make to a map.

To make a correction to your map, tap **Map corrections** in the **Options** menu then tap **Correct a map error**. The following types of corrections are shown.



Tap this button to block or unblock a street. You can block or unblock the street in one or both directions.

For example, to correct a street near to your current location, do the following:

1. Tap **(Un)block street**.
2. Tap **Near you** to select a street near your current location. You can select a street by name, a street near your Home location or a street on the map.
3. Select the street or section of a street you want to correct by tapping it on the map.

The street you select is highlighted and the cursor shows the name of the street.

4. Tap **Done**.

Your device shows the street and whether the traffic is blocked or allowed in each direction.



5. Tap one of the direction buttons to block or unblock the flow of traffic in that direction.
6. Tap **Done**.

The next time you connect your device to TomTom HOME, your corrections are shared with the TomTom Map Share community.



Tap this button to correct the traffic direction of a one-way street, where the direction of traffic is different to the direction shown on your map.

Note: Reverse traffic direction only works for one-way streets. If you select a two-way street you will be given the chance to block/unblock the street rather than changing the direction.



Edit street name

Tap this button to change the name of a street on your map.

For example, to rename a street near to your current location:

1. Tap **Edit street name**.
2. Tap **Near you**.
3. Select the street or section of a street you want to correct by tapping it on the map.

The street you select is highlighted and the cursor shows the name of the street.

4. Tap **Done**.
5. Type the correct street name.
6. Tap **Done**.



Change turn restrictions

Tap this button to change and report incorrect road turn directions.



Change road speed

Tap this button to change and report an incorrect road speed limit.



Add missing POI

Tap this button to add a new Point of Interest (POI).

For example to add a new restaurant near to your current location:

1. Tap **Add missing POI**.
2. Tap **Restaurant** in the list of POI categories.
3. Tap **Near you**.
4. Select the location of the missing restaurant.

You can select the location by entering the address or by selecting the location on the map. Select **Near you** or **Near home** to open the map at your current location or at your Home location.

5. Tap **Done**.
6. Type the name of the restaurant then tap **OK**.
7. If you know the telephone number of the restaurant you can type it, then tap **OK**.

If you don't know the number, just tap **OK** without typing a number.



Edit POI

Tap this button to edit an existing POI.

You can use this button to make the following changes to a POI:

- Delete the POI.
 - Rename the POI.
 - Change the telephone number of the POI.
 - Change the category that a POI belongs to.
 - Move the POI on the map.
-



Tap this button to report other types of corrections.

These corrections are not immediately applied to your map. Your TomTom XL sends a special report to TomTomMap Share.

You can report missing streets, errors in freeway entrances and exits and missing rotaries. If the correction you want to report is not covered by any of these report types, enter a general description then tap **Other**.

13. Help

Help provides an easy way to contact and plan a route to locations that provide emergency services, such as a hospital or to other specialized services.

For example, if you are involved in a car accident, you could use Help to call or find the phone number for the nearest hospital and tell them your exact location.

Note: *Information may not be available for all services in all countries.*

Using Help to phone a local service

You can use Help to plan a route to local services, make contact by phone and inform the service about the precise details of your current location.

When you search for a service center, you are shown a list of the nearest services. Select one of the services in the list to view their address and phone number and to see your current location on the map.

To use Help to locate an emergency service, contact them by phone and plan a route to the emergency service location, do the following:

1. Tap the screen to bring up the Main Menu.
2. Tap **help**.
3. Tap **Call for help**.
4. Select the type of service you require. For this example, tap **Nearest hospital**.
5. Select a service from the list. The nearest service is shown at the top of the list. For this example, tap the one at the top of the list.

Your current location is shown on the map together with the phone number of the service. This helps you to explain where you are when you call the service for help.

6. To plan a route from your current location to the service location, tap **Navigate there**.

Your navigation device starts guiding you to your destination.

Options

Call for help	Tap this button to view the location and contact details for a service.
Drive to help	Tap this button to plan a route by car to a service.

14. Introducing TomTom HOME

Using TomTom HOME you can register and manage your navigation device to receive free updates and buy new services. It's a good idea to connect to HOME frequently so you can do the following:

- Download the most recent map available for your device for free, if you connect to TomTom HOME within 30 days of buying your device.
- Download updates for your device for free, including Map Share updates and other services included with your product.
- Add new items to your device, like maps, voices and POIs, as well as buy TomTom services and manage your subscriptions.
- Share your map corrections and other content with the TomTom community.
- Make and restore backups of your device.
- Read the Reference Guide for your device.

When using HOME, you can get help with what you are doing from the HOME Help. You can also read about all the other things that HOME can do for you.

Tip: We recommend using a broadband internet connection whenever you connect to HOME.

Installing TomTom HOME

To install TomTom HOME on your computer, do the following:

1. Connect your computer to the internet.
2. Connect your device to your computer using the USB cable, then switch your device on.

Note: You should plug the USB connector directly into a USB port on your computer and not into a USB hub or USB port on a keyboard or monitor.

TomTom HOME starts to install.

Note: If HOME does not install automatically, you can download it from tomtom.com/home.

15. Traffic information using RDS-TMC

The Traffic Message Channel (TMC)

Important: The TomTom RDS-TMC Traffic Receiver is included with some products and is also available as an optional accessory. When the receiver is used with some navigation devices, some features may not be available.

The Traffic Message Channel is not available in all countries or regions and is not a TomTom Service. TomTom is not responsible for the availability or quality of traffic information provided by TMC. To check if TMC is available in your country or region, visit tomtom.com.

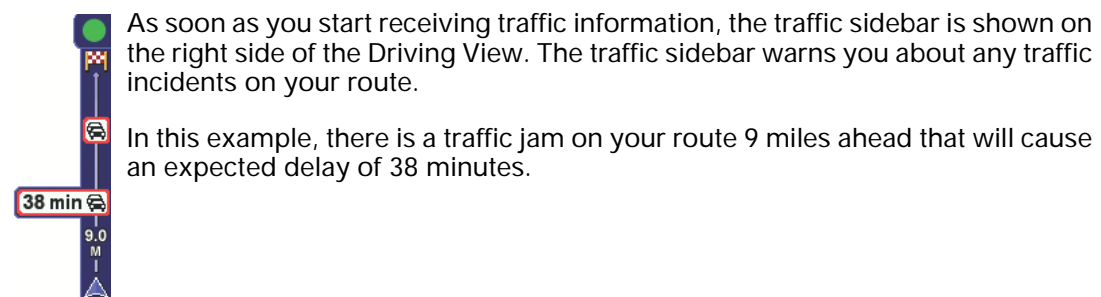
Your TomTom navigation device can use TMC traffic information to warn you about traffic delays along your route and how you can avoid them.

You can attach the TomTom RDS-TMC Traffic Receiver to your TomTom XL to view traffic congestion and plan routes that avoid heavy traffic.




TMC traffic information, also known as RDS-TMC, is transmitted via an FM radio signal. Radio stations in several countries broadcast TMC on the same frequency as their normal radio programs.

Using TMC traffic information

To use TMC traffic information on your TomTom XL, connect the TomTom RDS-TMC Traffic Receiver to the USB connector on your XL.



These symbols are shown at the top of the traffic sidebar:

-  Your XL has the latest RDS-TMC traffic information.
-  Your XL is waiting to download the latest RDS-TMC traffic information as soon as it is available.
-  Your XL is searching for a radio station that carries RDS-TMC traffic information.

To find the quickest route to your destination, do the following:

1. Tap the Traffic sidebar.

2. Tap **Minimize delays**.

Your device looks for the quickest route to your destination.

The new route may also include traffic delays, or may even be the same route as before.

3. Tap **Done**.

Traffic incidents







Traffic incidents and warnings are shown on the map, in the Driving View and on the Traffic sidebar.

To find out more about an incident, tap **Browse Map** in the Main Menu. Tap on a traffic incident symbol on the map to see information about that incident. To display information about surrounding incidents, use the left and right arrows at the bottom of the screen.





There are two types of incident and warning signs:

- Symbols shown in a red square are traffic incidents. Your navigation device can replan to avoid them.
- Symbols shown in a red triangle are weather related. Your device does not replan to avoid these warnings.

Traffic incident symbols and their meaning are shown below:

	Accident
	Road works
	One or more lanes closed
	Road closed
	Traffic incident
	Traffic jam

Weather related symbols and their meaning are shown below:

	Fog
	Rain
	Wind
	Ice



Snow



Note: The incident avoided symbol is shown for any traffic incident that you avoid using the TomTom Traffic Service.

16. Addendum

Important Safety Notices and Warnings

Global Positioning System

The Global Positioning System (GPS) is a satellite-based system that provides location and timing information around the globe. GPS is operated and controlled under the sole responsibility of the Government of the United States of America, which is responsible for its availability and accuracy. Any changes in GPS availability and accuracy, or in environmental conditions, may impact the operation of your TomTom device. TomTom does not accept any liability for the availability and accuracy of GPS.

Use with Care

Use of a TomTom device for navigation still means that you need to drive with due care and attention.

Aircraft and Hospitals

Use of devices with an antenna is prohibited on most aircraft, in many hospitals and in many other locations. A TomTom device must not be used in these environments.

Taking care of your TomTom device

Do not leave your TomTom device or TomTom accessories in view when you leave your car. They may become an easy target for thieves.

We recommend that you use the safety preferences on your TomTom device, where available. The safety preferences are available in the Preferences menu.

Take care of your TomTom device and clean it correctly.

- Use a soft cloth to wipe the screen of your device; do not use any liquid cleaners.
- If your device gets wet, dry it with a soft cloth.
- Do not open the casing of your device under any circumstances. Doing so may be dangerous and will invalidate your warranty.
- If your device includes a memory card, do not use the memory card with any device other than a TomTom device. Other devices may damage the memory card.
- Do not expose your device to high or low temperatures, which can cause permanent damage. For example, don't leave it in the car on hot summer days or during cold winter nights.

Battery

This product uses a Lithium-Ion battery. Do not use it in a humid, wet and/or corrosive environment. Do not put, store or leave your product in or near a heat source, in a high temperature location, in strong direct sunlight, in a microwave oven or in a pressurized container, and do not expose it to temperatures over 60 C (140 F). Failure to follow these guidelines may cause the Lithium-Ion battery to leak acid, become hot, explode or ignite

and cause injury and/or damage. Do not pierce, open or disassemble the battery. If the battery leaks and you come into contact with the leaked fluids, rinse thoroughly with water and seek medical attention immediately. For safety reasons, and to prolong the lifetime of the battery, charging will not occur at low (below 0 C/32 F) or high (over 45 C/113 F) temperatures.

Temperatures: Standard operation: -0 C (32 F) to +45 C (113 F); short-term storage: -20 C (-4 F) to +60 C (140 F); long-term storage: -20 C (-4 F) to +25 C (77 F).

Caution: risk of explosion if battery is replaced with an incorrect type.

Do not remove or attempt to remove the non-user-replaceable battery. If you have a problem with the battery, please contact TomTom customer support.



THE LITHIUM-ION BATTERY CONTAINED IN THE PRODUCT MUST BE RECYCLED OR DISPOSED OF PROPERLY ACCORDING TO THE LOCAL LAWS AND REGULATIONS AND ALWAYS SEPARATE FROM HOUSEHOLD WASTE. BY DOING THIS YOU WILL HELP CONSERVE THE ENVIRONMENT. USE YOUR TOMTOM ONLY WITH THE SUPPLIED DC POWER LEAD (CAR CHARGER/BATTERY CABLE) AND AC ADAPTER (HOME CHARGER) FOR BATTERY CHARGING.

Please use this device with the charger provided.

For replacement chargers, go to tomtom.com for information about approved chargers for your device.

To recycle your TomTom unit please see your local approved TomTom service center.

Do not disassemble or crush, bend or deform, puncture or shred.

Do not modify or remanufacture, attempt to insert foreign objects into the battery, immerse or expose to water or other liquids, expose to fire, explosion or other hazard.

Only use the battery for a system for which it is specified.

Only use the battery with a charging system that has been qualified with the system per this standard. Use of an unqualified battery or charger may present a risk of fire, explosion, leakage or other hazard.

Do not short circuit a battery or allow metallic conductive objects to contact battery terminals.

Replace the battery only with another battery that has been qualified with the system per this standard, IEEE-Std-1725-200x. Use of an unqualified battery may present a risk of fire, explosion, leakage or other hazard.

Promptly dispose of used batteries in accordance with local regulations.

Battery usage by children should be supervised.

Avoid dropping the phone or battery. If the phone or battery is dropped, especially on a hard surface and the user suspects damage, take it to a service center for inspection.

Improper battery use may result in a fire, explosion or other hazard.

For those host devices that utilize a USB port as a charging source, the host device's user manual shall include a statement that the phone shall only be connected to products that bear the USB-IF logo or have completed the USB-IF compliance program.

The stated battery life is a maximum possible battery life. The maximum battery life will only be achieved under specific atmospheric conditions. The estimated maximum battery life is based on an average usage profile.

For tips on extending the battery life, go to the FAQ listed below for your country:

AU: www.tomtom.com/8703, CZ: www.tomtom.com/7509, DE: www.tomtom.com/7508, DK: www.tomtom.com/9298, ES: www.tomtom.com/7507, FI: www.tomtom.com/9299, FR: www.tomtom.com/7506, HU: www.tomtom.com/10251, IT: www.tomtom.com/7505, NL: www.tomtom.com/7504, PL: www.tomtom.com/7503, PT: www.tomtom.com/8029, RU: www.tomtom.com/10250, SE: www.tomtom.com/8704, UK: www.tomtom.com/7502, US: www.tomtom.com/7510

SPECIAL NOTE REGARDING DRIVING IN CALIFORNIA AND MINNESOTA

California Vehicle Code Section 26708 (a) (1) provides that "No persons shall drive any motor vehicle with an object or material placed, displayed, installed, affixed or applied upon the windshield or side or rear windows." Drivers in California should not use a suction mount on their windshield, side or rear windows.


Note: this section of the California Vehicle Code applies to anyone driving in California, not just California residents.

Minnesota State Legislature Statutes Section 169.71, subdivision 1, section 2 provides that "A person shall not drive or operate with any objects suspended between the driver and the windshield other than sun visors and rearview mirrors and electronic toll collection devices."

Note: this Minnesota Statute applies to anyone driving in Minnesota, not just Minnesota residents.

TomTom Inc. bears no responsibility for any fines, penalties or damage that may be incurred by disregarding this notice. While driving in any state with windshield mounting restrictions, TomTom recommends the use of the supplied Adhesive Mounting Disk or its Alternative Mounting Kit, which includes multiple options for mounting TomTom devices on the dashboard and using the air vents. See tomtom.com for more information about this mounting option.

FCC Information for the User

 This product contains a transmitter which must not be co-located or simultaneously operated in conjunction with any other transmitter.

Exposure to Radio Frequency Radiation

This device complies with FCC radiation exposure limits set forth for an uncontrolled environment. In order to avoid the possibility of exceeding the FCC radio frequency exposure limits, human proximity to the antenna shall not be less than 8 inches (20 cm) during normal operation.

Radio and Television Interference

This equipment radiates radio frequency energy and if not used properly - that is, in strict accordance with the instructions in this manual - may cause interference to radio communications and television reception.

This device has been tested and found to comply with the limits for a Class B digital device, pursuant to Part 15 of the FCC Rules. These limits are designed to provide reasonable protection against harmful interference in a residential installation. This equipment generates, uses and can radiate radio frequency energy and, if not installed and used in accordance with the instructions, may cause harmful interference to radio communications. However, there is no guarantee that interference will not occur in a particular installation. If this equipment does cause harmful interference to radio or television reception, which can be determined by turning the equipment off and on, the user is encouraged to try to correct the interference by one or more of the following measures:

- Reorient or relocate the receiving antenna.
- Increase the separation distance between the equipment and the receiver.
- Connect the equipment into an outlet on a circuit different from that to which the receiver is connected.

- Consult an experienced radio/TV technician for help.

Changes or modifications not expressly approved by the party responsible for compliance could void the user's authority to operate the equipment.

Important

This equipment was tested for FCC compliance under conditions that included the use of shielded cables and connectors between it and the peripherals. It is important that you use shielded cables and connectors to reduce the possibility of causing radio and television interference. Shielded cables suitable for the product range can be obtained from an authorised dealer. If the user modifies the equipment or its peripherals in any way, and these modifications are not approved by TomTom, the FCC may withdraw the user's right to operate the equipment. For customers in the USA, the following booklet prepared by the Federal Communications Commission may be of help: "How to Identify and Resolve Radio-TV Interference Problems". This booklet is available from the US Government Printing Office, Washington, DC 20402. Stock No 004-000-00345-4.

FCC Declaration of Conformity

Tested to comply with FCC Standards for Home or Office Use

This device complies with part 15 of the FCC Rules. Operation is subject to the following two conditions:

1. This device may not cause harmful interference.
2. This device must accept any interference received, including interference that may cause undesired operation.

Responsible party in North America

TomTom, Inc., 150 Baker Avenue Extension, Concord, MA 01742

Tel: 866 486-6866 option 1 (1-866-4-TomTom)

This Document

Great care was taken in preparing this manual. Constant product development may mean that some information is not entirely up to date. The information in this document is subject to change without notice.

TomTom shall not be liable for technical or editorial errors or omissions contained herein; nor for incidental or consequential damages resulting from the performance or use of this material. This document contains information protected by copyright. No part of this document may be photocopied or reproduced in any form without prior written consent from TomTom N.V.

17. Copyright notices

© 2010 TomTom N.V., The Netherlands. TomTom®, and the "two hands" logo, among others, are Trademarks owned by TomTom N.V. or one of its subsidiaries. Please see www.tomtom.com/legal for warranties and end user licence agreements applying to this product.

© 2010 TomTom N.V., Pays-Bas. TomTom® et le logo composé de « deux mains », entre autres, font partie des marques commerciales appartenant à TomTom N.V. ou l'une de ses filiales. L'utilisation de ce produit est régie par notre garantie limitée et le contrat de licence utilisateur final, que vous pouvez consulter à l'adresse suivante : www.tomtom.com/legal

© 2010 TomTom NV, Países Bajos. TomTom™ y el logotipo "dos manos" son marcas comerciales, aplicaciones o marcas registradas de TomTom NV. Nuestra garantía limitada y nuestro acuerdo de licencia de usuario final para el software integrado son de aplicación para este producto; puede consultar ambos en www.tomtom.com/legal.

Data Source

© 2010 Tele Atlas North America. Inc. All rights reserved.

Some images are taken from NASA's Earth Observatory.

The purpose of NASA's Earth Observatory is to provide a freely-accessible publication on the Internet where the public can obtain new satellite imagery and scientific information about our home planet.

The focus is on Earth's climate and environmental change: earthobservatory.nasa.gov/
