



TOOLING CATALOG

DIE-MAKING

EQUIPMENT 7

Plotters	Machines.....	8
	Wear Parts.....	9
	Components.....	9
Pinsetters	Machines.....	10
	Consumables.....	10
	Components.....	11
Benders	Machines.....	12
	Consumables.....	12
	Additional Equipment.....	13
	Blades.....	13
	Bending Tools.....	14
	Lubricants.....	14

CAD SOFTWARE 15

	Impact CAD.....	16
	BSI Tool Designer.....	17
Universal Form Shop Supply		18

CUTTING STATION 19

Form shop supply	Boxplan Lock Fix.....	20
	Boxplan Sheet Ramp.....	20

STRIPPING STATION 21

Consumables	Upper Pins & Claws.....	22
Form shop supply	Boxplan Box Ramp.....	23
	Boxplan Craft Strip.....	23
	Boxplan Twin Strip.....	23
	Boxplan Sheet Lift.....	24
	Boxplan Separation Knives.....	24
	Trim Knives.....	24
	Boxplan Sheet Presser.....	25
	Boxplan Box Presser.....	25
	Boxplan Clamp Block.....	25
	Boxplan Register Fix.....	25

BLANKING STATION

27

Angle Lock® Kits Standard Frames	Frame Kits.....	28
	Flat Top Tool Kits.....	28
	Universal Tool Kits.....	28
	Frame Rail.....	29
	Frame Assembly Components.....	30
	Machine Frame Mounting Hardware.....	30
Angle Lock® Kits Quick Set Frames	Quick Set Frame – Rear Rail.....	31
	Quick Set Frame – Left/Right Rail.....	31
	Quick Set Frame – Components.....	32
	Quick Set Frame – Machine Frame Mounting Hardware.....	32
Angle Lock® Kits Receiver System	Receiver System Frame Kits.....	33
	Receiver System Rail Kits.....	33
	Receiver System Rail – Front/Rear.....	33
	Receiver System Rail – Left/Right.....	34
	Receiver System – Fastening Device.....	34
	Frame Assembly Components.....	34
Angle Lock® Components	Grid Material.....	35
	Grid Clamps.....	35
	Rod Clamps.....	36
	Lower Board Support.....	36
	Support Rail – Flat Top Tool.....	37
	Mounting Rails.....	37
	Joggers – Grid Tool.....	38
	Joggers – Universal.....	38
	Joggers – Special Long Slide 44mm.....	39
	Joggers – Universal And Grid Tool – Body.....	39
	Special Joggers.....	39
	Extended Jogger Slide.....	40
	Pressers.....	41
	Presser Rails.....	42
	Presser Accessories.....	42
	Upper Tool – Accessories.....	42
	Lower Tool – Accessories.....	43
	Angle Lock® – Components.....	44

CONVERTING

QUICKLOCKING SYSTEMS 46

Boxplan Easy Locker.....	47
Boxplan Speed Lock 1.....	47
Boxplan Speed Lock 2.....	47
Boxplan Blank Lock.....	48
Boxplan Sheet Blanker.....	48
Chase Changer.....	48
Boxplan Setup Table.....	49
Pre-setting Table.....	49

CUTTING STATION 51

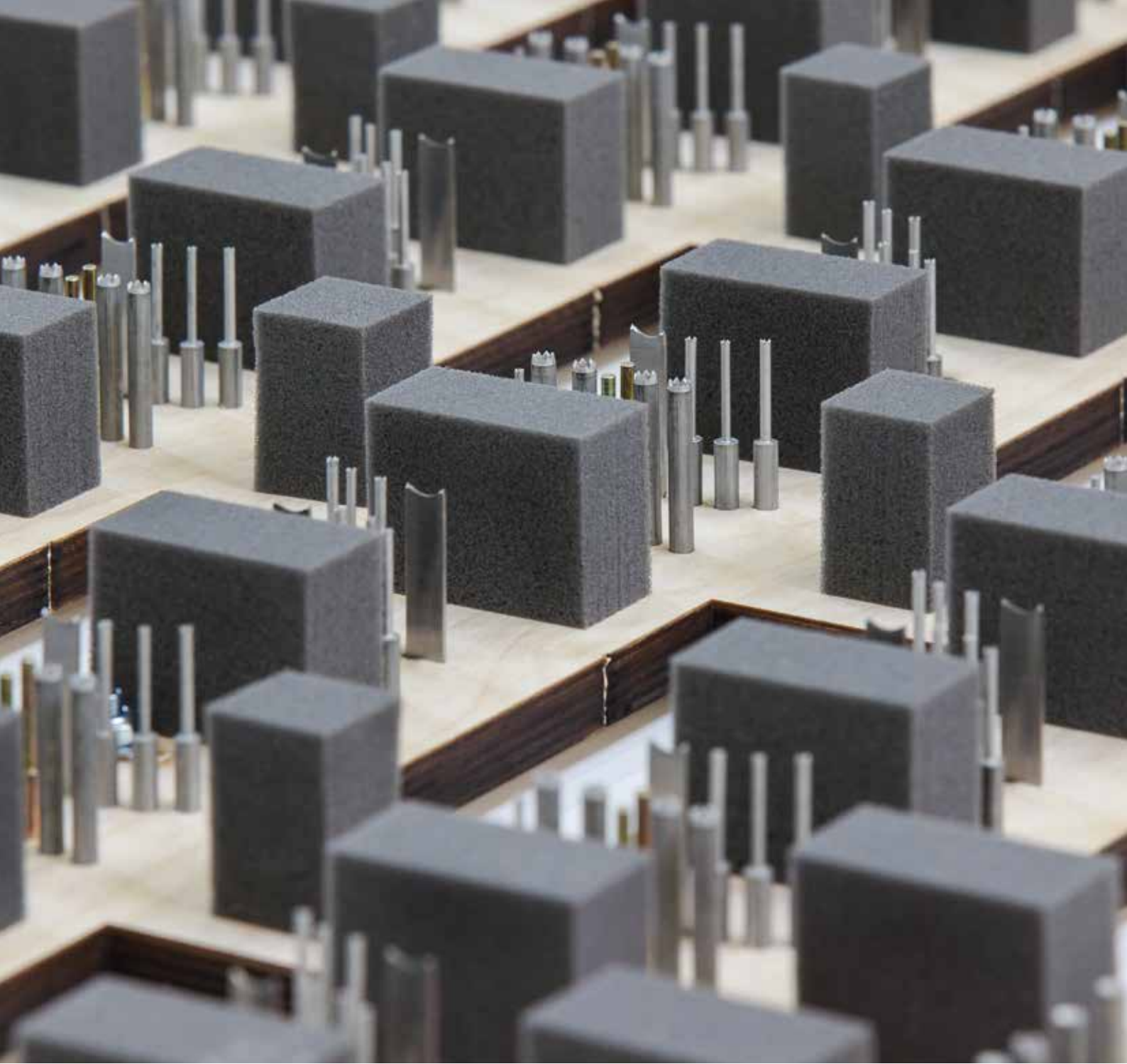
Make Ready	Make Ready Tape.....	52
	Make Ready Paper.....	52
	Carbon Paper.....	53
	Patch Sheet.....	53
Cutting Plates	55
Form shop supply	Nick Chisel.....	56
	Miscellaneous.....	56

STRIPPING STATION 57

Consumables	Lower Stripping Pins.....	58
--------------------	---------------------------	----

BLANKING STATION 59

Upper blanking tools	Boxplan Blank Fix Set.....	60
	Boxplan Blank Fix Table.....	61
	Boxplan Blanking Blocks.....	61
Non-Stop Systems/FLEX RACK	62



DIE-MAKING

EQUIPMENT



PLOTTERS

MACHINES



RUBBERPLOT



MASTERPLOT

Article number	Description
BSA1999844540	RUBBERPLOT 500
BSA1999844541	RUBBERPLOT 1000
BSA1999844565	MASTERPLOT 1100
BSA1999844566	MASTERPLOT 1100P*
BSA1999844635	MASTERPLOT 1100PS**
BSA1999844636	MASTERPLOT 1100PCS***
BSA1999844575	MASTERPLOT 1317
BSA1999844576	MASTERPLOT 1317P*
BSA1999844637	MASTERPLOT 1317PS**
BSA1999844638	MASTERPLOT 1317PCS***

* P = Pertinax

** PC = Pertinax & Chamfer

*** PCS = Pertinax, Chamfer & Steel Counter

WEAR PARTS



BSA1999844544

Article number	Description
BSA1999844544	BLADES DS-15 (Batch of 5)
BSA1999844545	BLADES DS-20 (Batch of 5)
BSA1999844546	BLADES DS-15 (Batch of 100)
BSA1999844547	BLADES DS-20 (Batch of 100)
BSA1999844548	FELT CUTTING UNDERLAY 600 × 900 × 3mm – Anthracite
BSA1999844549	FELT CUTTING UNDERLAY 1100 × 1100 × 3mm – Anthracite

COMPONENTS



BSA1999844542



BSA1999844554



BSA1999844555



BSA1999844556



BSA1999844557



BSA1999844562



BSA1999844564

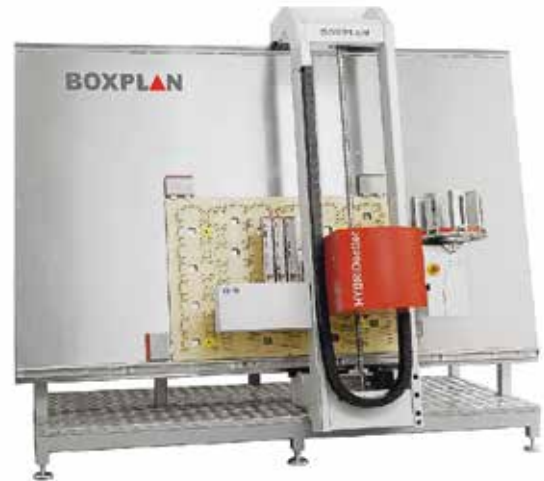
Article number	Description
BSA1999844542	RUBBER CUTTING TOOL (7mm stroke)
BSA1999844543	PEN TOOL
BSA1999844550	SMC AXIS × RUBBERPLOT 500
BSA1999844551	SMC AXIS Y RUBBERPLOT 500
BSA1999844552	SMC AXIS × RUBBERPLOT 1000
BSA1999844553	SMC AXIS Y RUBBERPLOT 1000
BSA1999844554	PMDX (Controller Card)
BSA1999844555	ESS (Communication card)
BSA1999844556	GECKO (A AXIS DRIVE)
BSA1999844557	SMC-DRIVE Y1
BSA1999844558	SMC-DRIVE Y2
BSA1999844559	SMC-DRIVE X
BSA1999844560	SMC-DRIVE Z
BSA1999844561	SMC CABLE SET
BSA1999844562	ROD (BLADE HOLDER)
BSA1999844563	BEARING for ROD (BLADE HOLDER)
BSA1999844564	COMPLETE REPLACEMENT HEAD for RUBBERPLOT

PINSETTERS

MACHINES



BOXPAN EASYSETTER NT



BOXPAN HYBRIDSETTER

Article number	Description
BSA1999110100	BOXPAN EASYSETTER NT
BSA1999110000	BOXPAN HYBRIDSETTER

CONSUMABLES

Refer to stripping consumables (page 22).

COMPONENTS



BSA1999110005



BSA1999110006



BSA1999110003



BSA1999110004



BSA1999110001



BSA1999110001



BSA1999844640

Article number	Description
BSA1999110005	GUIDING BUSH FOR CROWN PINS – HYBRIDSETTER
BSA1999110006	GUIDING BUSH FOR CROWN CLAWS – HYBRIDSETTER
BSA1999110003	FIRING PIN FOR 8.5mm CROWN CLAWS – HYBRIDSETTER
BSA1999110004	FIRING PIN FOR 3.8 – 6mm CROWN CLAWS – HYBRIDSETTER
BSA1999110001	FIRING PIN FOR 5mm CROWN PINS – HYBRIDSETTER & EASYSETTER NT
BSA1999110002	FIRING PIN FOR 1.8 – 3mm CROWN PINS – HYBRIDSETTER & EASYSETTER NT
BSA1999110101	GUIDING BUSH FOR PIN – EASYSETTER
BSA1999844641	CAD SOFTWARE LICENSE – EXPERTSTRIP
BSA1999844642	ADDITIONAL CAD SOFTWARE LICENCE - EXPERTSTRIP
BSA1999844639	SET OF SPARE/WEARING PARTS
BSA1999844640	PRESSURE-SENSITIVE SAFETY MAT

BENDERS

MACHINES



MANUAL GRID BENDER



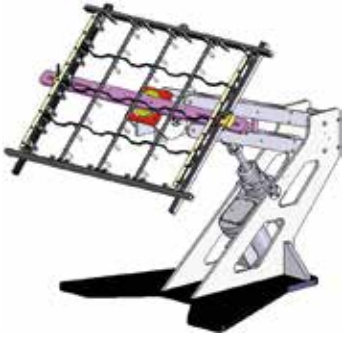
SEMI-AUTOMATIC GRID BENDER

Article number	Description
BSA1089042000	MANUAL GRID BENDER
BSA1089002900	SEMI-AUTOMATIC GRID BENDER

CONSUMABLES

Refer to blanking consumables (page 35).

ADDITIONAL EQUIPMENT



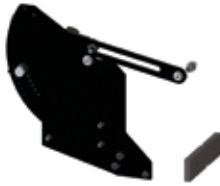
BSI WORKSTATION/FRAME STAND



HABERLE COLD SAW



DIGITAL STOP (HABERLE COLD SAW)



GRID NOTCHING STOP (HABERLE COLD SAW)



WORK TABLE

Article number	Description
BSA1089002800	BSI WORKSTATION/FRAME STAND
BSA1089041100	HABERLE COLD SAW
BSA1089041200	DIGITAL STOP (HABERLE COLD SAW)
BSA1089041300	GRID NOTCHING STOP (HABERLE COLD SAW)
BSA1089041900	WORK TABLE

BLADES

Article number	Description
BSA1089042500	SAW BLADE Ø 225 × 2 × 32mm
BSA1089043200	SAW BLADE Ø 225 × 2 × 32mm (TiCN plating)
BSA1089041400	GRID NOTCHING BLADE Ø 225 × 2 × Ø 32mm
BSA1089041500	GRID NOTCHING BLADE Ø 225 × 3 × Ø 32mm
BSA1089041600	GRID NOTCHING BLADE Ø 225 × 4 × Ø 32mm
BSA1089041700	GRID NOTCHING BLADE Ø 225 × 5 × Ø 32mm
BSA1089041800	GRID NOTCHING BLADE Ø 225 × 6 × Ø 32mm



SAW BLADE



GRID NOTCHING BLADE

BENDING TOOLS

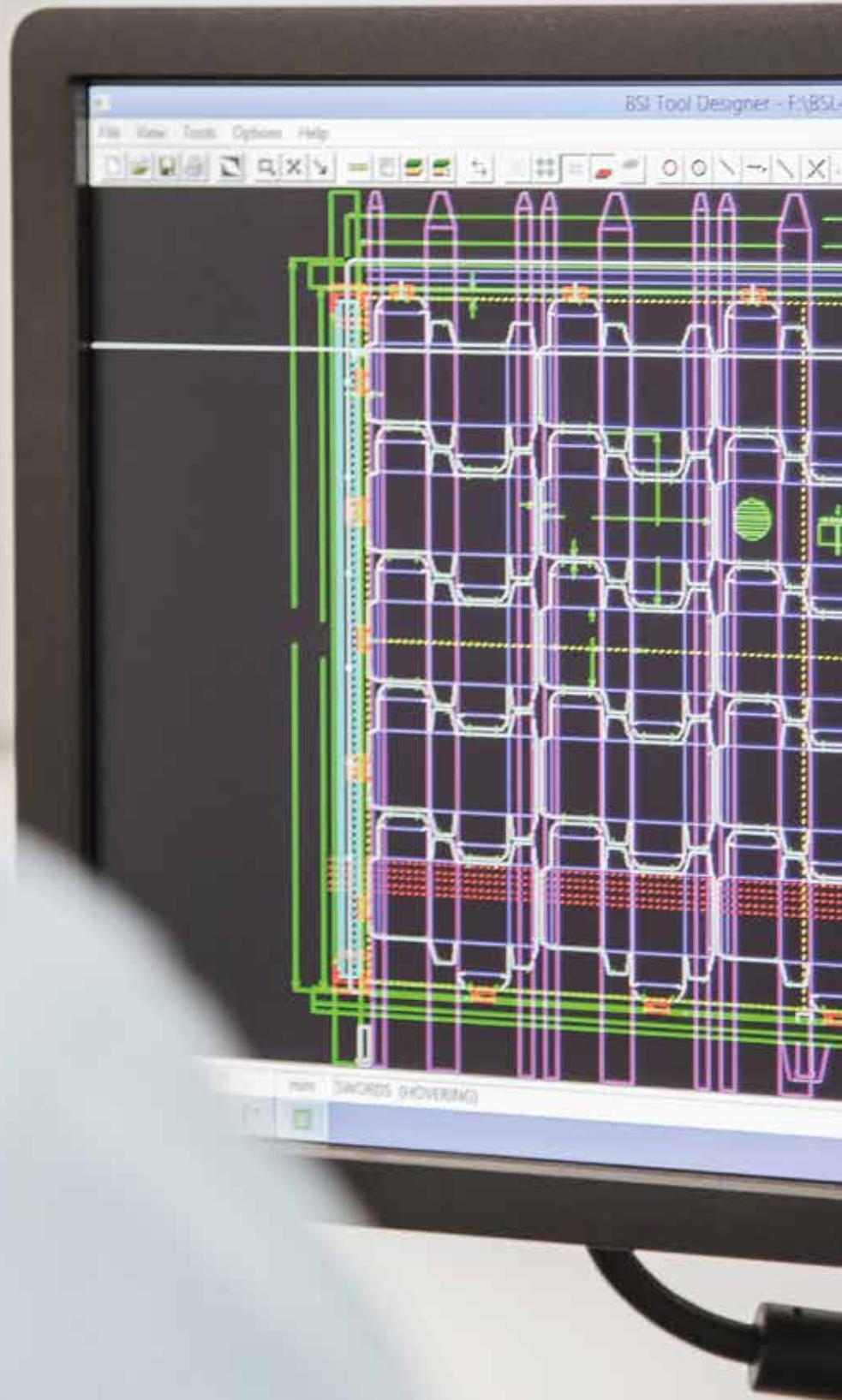
Article number	Description
BSA1089039100	2mm FEMALE GRID BENDER TOOLING
BSA1089039200	3mm FEMALE GRID BENDER TOOLING
BSA1089039300	4mm FEMALE GRID BENDER TOOLING
BSA1089039400	5mm FEMALE GRID BENDER TOOLING
BSA1089039500	6mm FEMALE GRID BENDER TOOLING
BSA1089039600	2mm MALE GRID BENDER TOOLING
BSA1089039700	3mm MALE GRID BENDER TOOLING
BSA1089039800	4mm MALE GRID BENDER TOOLING
BSA1089039900	5mm MALE GRID BENDER TOOLING
BSA1089040000	6mm MALE GRID BENDER TOOLING
BSA1089040100	2mm FEMALE TOOLING SUPPORT
BSA1089040200	3mm FEMALE TOOLING SUPPORT
BSA1089040300	4mm FEMALE TOOLING SUPPORT
BSA1089040400	5mm FEMALE TOOLING SUPPORT
BSA1089040500	6mm FEMALE TOOLING SUPPORT
BSA1089040600	2mm GRID BENDER TOOLING SET
BSA1089040700	3mm GRID BENDER TOOLING SET
BSA1089040800	4mm GRID BENDER TOOLING SET
BSA1089040800	5mm GRID BENDER TOOLING SET
BSA1089040900	6mm GRID BENDER TOOLING SET



LUBRICANTS

Article number	Description
BSA1089043700	HABERLE S 2000 CUTTING OIL

CAD SOFTWARE



IMPACT CAD

Article number	Description
BSA1999844586	DESIGNER ESSENTIALS LICENCE
BSA1999844587	DESIGNER ESSENTIALS UPGRADE
BSA1999844594	DESIGNER STANDARD LICENCE
BSA1999844595	DESIGNER STANDARD UPGRADE
BSA1999844588	DESIGNER PROFESSIONAL 1 ST LICENCE
BSA1999844589	DESIGNER PROFESSIONAL 1 ST UPGRADE
BSA1999844590	DESIGNER PROFESSIONAL 2 ND LICENCE
BSA1999844591	DESIGNER PROFESSIONAL 2 ND UPGRADE
BSA1999844592	DESIGNER PROFESSIONAL 3 RD + LICENCE
BSA1999844593	DESIGNER PROFESSIONAL 3 RD + UPGRADE
BSA1999844596	DIEMAHER MATRIX LICENCE
BSA1999844605	DIEMAHER STANDARD LICENCE
BSA1999844606	DIEMAHER STANDARD UPGRADE
BSA1999844597	DIEMAHER PROFESSIONAL 1 ST LICENCE
BSA1999844598	DIEMAHER PROFESSIONAL 1 ST UPGRADE
BSA1999844599	DIEMAHER PROFESSIONAL 2 ND LICENCE
BSA1999844600	DIEMAHER PROFESSIONAL 2 ND UPGRADE
BSA1999844601	DIEMAHER PROFESSIONAL 3 RD + LICENCE
BSA1999844602	DIEMAHER PROFESSIONAL 3 RD UPGRADE
BSA1999844603	DIEMAHER RUBBERER LICENCE
BSA1999844604	DIEMAHER RUBBERER UPGRADE
BSA1999844581	BOBST POWERPACK 1 ST LICENCE
BSA1999844582	BOBST POWERPACK 2 ND LICENCE
BSA1999844583	BOBST POWERPACK 3 RD LICENCE
BSA1999844584	CONTROLLER LICENCE
BSA1999844585	CONTROLLER UPGRADE

BSA1999844607	ESTIMATOR LICENCE
BSA1999844608	ESTIMATOR UPGRADE
BSA1999844609	TOPS PRO NETWORK 1 ST LICENCE
BSA1999844610	TOPS PRO NETWORK 2 ND + LICENCE
BSA1999844611	TOPS PRO STAND-ALONE
BSA1999844630	TOPS PRO PLUGIN
BSA1999844613	LICENCE SERVER DONGLE
BSA1999844614	LICENCE SERVER CONCURRENT USER
BSA1999844615	LICENCE SERVER DONGLE SPARE
BSA1999844580	ACCELERATE PLUG-IN
BSA1999844612	ENTERPRISE
BSA1999844616	3DX MODULE
BSA1999844617	ADVANCED 3D TOOLSET MODULE
BSA1999844618	BASIC 3D TOOLSET MODULE
BSA1999844619	BLANKER CREATOR MODULE
BSA1999844620	DIEBOARD CREATOR MODULE
BSA1999844621	EXTENDED IMPORT/EXPORT MODULE
BSA1999844622	EXTENDED MACHINE DRIVERS
BSA1999844623	LAYOUT CREATOR MODULE
BSA1999844624	MATRIX CREATOR MODULE
BSA1999844625	RUBBER CREATOR MODULE
BSA1999844626	RULE PREPARATION MODULE
BSA1999844627	STANDARD CREATOR MODULE
BSA1999844628	STRIPPER CREATOR MODULE
BSA1999844629	CAPE PLUG-IN
BSA1999844631	SOFTWARE MAINTENANCE CONTRACT

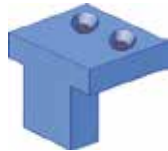
BSI TOOL DESIGNER

Article number	Description
BSA1089002600	SOFTWARE (Single seat license)
BSA1089002601	MAINTENANCE – ONE YEAR (Single seat license)
BSA1089025400	SOFTWARE (Network license)
BSA1089025500	MAINTENANCE – ONE YEAR (Network license)

UNIVERSAL FORM SHOP SUPPLY



SOFT CORNER



BSA1999844693



BSA0502239700



BSA0502207900



BSA0502209300



BSA0502240000



T-NUTS
WITH PRONGS



BSA1999844519



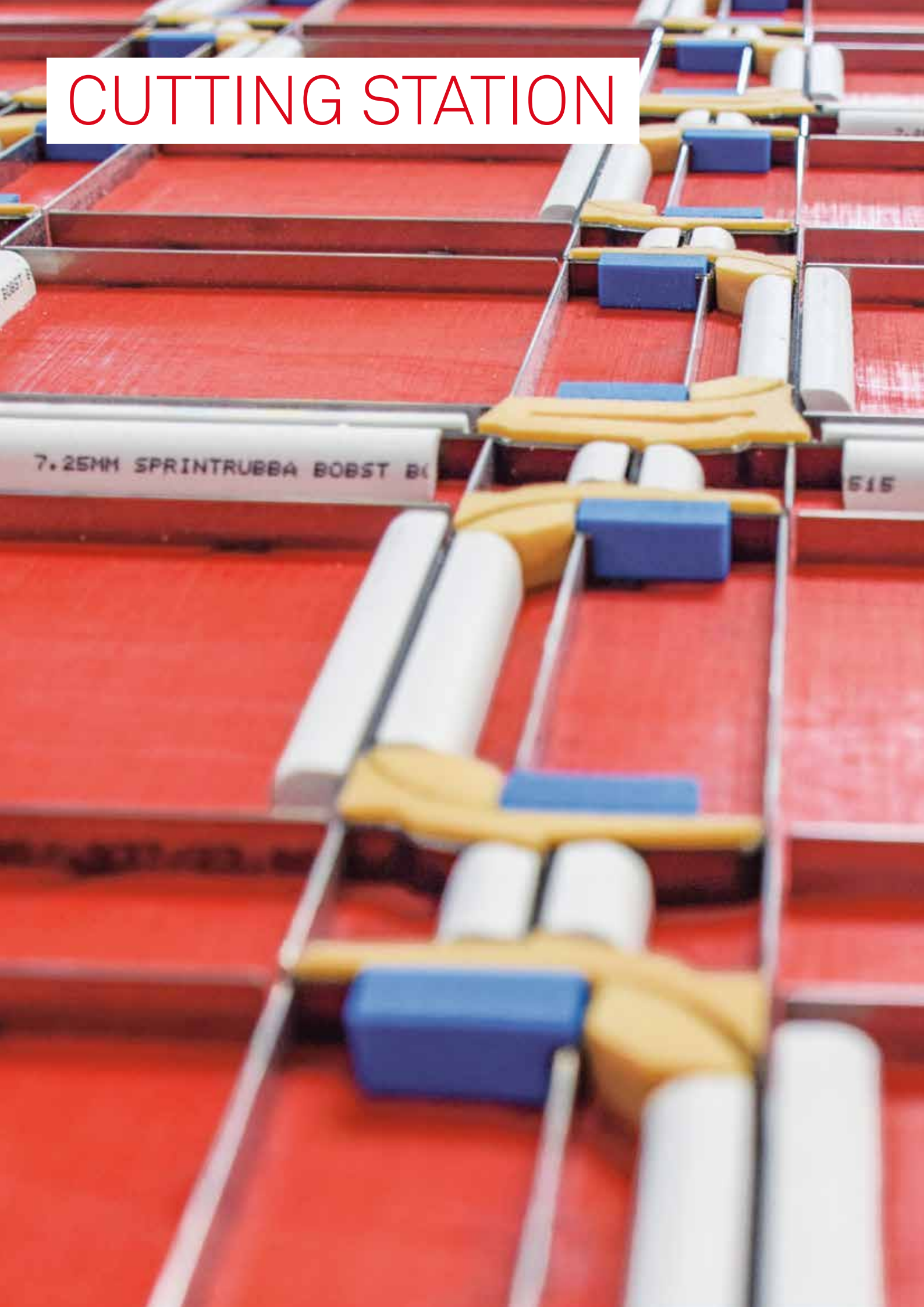
BSA05020000RK

Article number	Description
BSA1031200700	SOFT CORNER 18mm
BSA1031200600	SOFT CORNER 15mm
BSA1031200800	SOFT CORNER 15.8mm
BSA1999844693	REGISTER BLOCK (Batch of 250)
BSA0502239700	CENTERLINE BLOCK
BSA0502207900	CENTERLINE I BLOCK
BSA0502209300	CENTERLINE II BLOCK
BSA0502240000	CENTERING PIECE
BSA1005009700	T-NUTS WITH PRONGS (Set of 100)
BSA1005009800	T-NUTS WITH PRONGS
BSA1005009900	T-NUTS WITH PRONGS
BSA1005008700	T-NUTS WITH PRONGS
BSA1005008900	T-NUTS WITH PRONGS
BSA1005005100	T-NUTS WITH PRONGS
BSA1005010000	T-NUTS WITH PRONGS
BSA1999844519	SAFETY SCREW 8.5mm (Batch of 100)
BSA05020000RK	FASTENING TIE ROD (Batch of 20)

CUTTING STATION

7.25MM SPRINTRUBBA BOBST BK

515



FORM SHOP SUPPLY

BOXPLAN LOCK FIX

Article number	Description
BSA1999844567	MAGNET Ø 50mm (Batch of 4)
BSA1999844568	MAGNET Ø 33mm (Batch of 4)
BSA1999844569	SEAT Ø 50mm (Batch of 250)
BSA1999844570	SEAT Ø 33mm (Batch of 250)



MAGNET



SEAT

BOXPLAN SHEET RAMP

Article number	Description
BSA1999844516	11 mm (Batch of 200)
BSA1999844517	21 mm (Batch of 200)



11mm
(Batch of 200)



21mm
(Batch of 200)

STRIPPING STATION

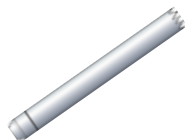


CONSUMABLES

UPPER PINS & CLAWS



BSA1999107807



BSA1999107810



BSA1999107817



BSA1999107804



BSA1999107805



BSA1999107808



BSA1999107811



BSA1999108000



BSA1999108001



BSA1999108002



BSA1999107813



BSA1999107815



BSA1999107802

Article number	Description	Length	Ø	Machine compatibility	Batch size
BSA1999107807	CROWN PIN	44mm	3.0mm	EASYSETTER NT	3000 pieces
BSA1999107810	CROWN PIN	44mm	5.0mm	EASYSETTER NT	3000 pieces
BSA1999107817	CROWN PIN	44mm	2.2mm	EASYSETTER NT	3000 pieces
BSA1999107804	CROWN PIN	44mm	1.8mm	EASYSETTER NT & HYBRIDSETTER	3000 pieces
BSA1999107805	CROWN PIN	48mm	2.2mm	EASYSETTER NT & HYBRIDSETTER	2500 pieces
BSA1999107808	CROWN PIN	48mm	3.0mm	EASYSETTER NT & HYBRIDSETTER	2500 pieces
BSA1999107811	CROWN PIN	48mm	5.0mm	EASYSETTER NT & HYBRIDSETTER	2500 pieces
BSA1999108000	CROWN CLAW	48mm	3.8mm	HYBRIDSETTER	1000 pieces
BSA1999108001	CROWN CLAW	48mm	6.0mm	HYBRIDSETTER	1000 pieces
BSA1999108002	CROWN CLAW	48mm	8.5mm	HYBRIDSETTER	1000 pieces
BSA1999107813	FLAT PIN	44mm	3.0mm	EASYSETTER NT & HYBRIDSETTER	3000 pieces
BSA1999107815	COUNTERSUNK PIN	44mm	5.0mm	EASYSETTER NT & HYBRIDSETTER	3000 pieces
BSA1999107802	BEE STRIP	44mm	3.0mm	EASYSETTER NT & HYBRIDSETTER	3000 pieces

FORM SHOP SUPPLY

BOXPLAN BOX RAMP



BSA1999844508



BSA1999844509



BSA1999844510



BSA1999844511

Article number	Description
BSA1999844508	BOX RAMP S (Batch of 500)
BSA1999844509	BOX RAMP M (Batch of 500)
BSA1999844510	BOX RAMP L (Batch of 250)
BSA1999844511	BOX RAMP H (Batch of 250)

BOXPLAN CRAFT STRIP

Article number	Description
BSA1999844514	CRAFT STRIP M (Batch of 250)
BSA1999844515	CRAFT STRIP L (Batch of 250)



BSA1999844514



BSA1999844515

BOXPLAN TWIN STRIP

Article number	Description
BSA1999844676	TWIN STRIP (batch of 200)



TWIN STRIP

BOXPLAN SHEET LIFT



BSA1999844501



BSA1999844502



BSA1999844503



BSA1999844504

Article number	Description
BSA1999844501	SHEET LIFT (Batch of 1000)
BSA1999844502	SHEET LIFT 3D (Batch of 1000)
BSA1999844503	SHEET LIFT ADD (Batch of 500)
BSA1999844504	ADD DRILL for SHEET LIFT ADD

BOXPLAN SEPARATION KNIVES



BSA1999844512



BSA1999844513



BSA1999844677



BSA1999844678



BSA1999844679

Article number	Description
BSA1999844512	SEP KNIFE 20mm (Batch of 500)
BSA1999844513	SEP KNIFE 40mm (Batch of 300)
BSA1999844677	DYN SEPARATOR 9mm (Batch of 150)
BSA1999844678	DYN SEPARATOR 20mm (Batch of 150)
BSA1999844679	DYN SEPARATOR 55mm (Batch of 150)

TRIM KNIVES



TRIM KNIFE (RIGHT)



TRIM KNIFE (LEFT)



SEPARATOR SPO

Article number	Description
BSA0502176400	TRIM KNIFE (RIGHT)
BSA0502176500	TRIM KNIFE (LEFT)
BSA05020000QW	SEPARATOR SPO (Batch of 20)

BOXPLAN SHEET PRESSER



Article number	Description
BSA1999844505	SHEET PRESSER 30 × 38mm (Batch of 100)
BSA1999844506	SHEET PRESSER 40 × 38mm (Batch of 100)

BOXPLAN BOX PRESSER

Article number	Description
BSA1999844507	BOX PRESSER (Batch of 50)



BOXPLAN CLAMP BLOCK

Article number	Description
BSA1999844520	CLAMP BLOCK 25mm (Batch of 250)
BSA1999844521	CLAMP BLOCK 50mm (Batch of 200)



BSA1999844520



BSA1999844521

BOXPLAN REGISTER FIX

Article number	Description
BSA1999844524	REGISTER FIX 43mm (Batch of 250)
BSA1999844525	REGISTER FIX 50mm (Batch of 250)



BSA1999844524



BSA1999844525

BLANKING STATION



ANGLE LOCK® KITS

STANDARD FRAMES

FRAME KITS

Article number	Description
BSA1089008700	For SP 102/103
BSA1089009300	For SP 104
BSA1089009200	For SP 106
BSA1089009100	For SP 130
BSA1089009000	For SP 142-ER
BSA1089008900	For SP 142 -CER
BSA1089018300	For SP 145
BSA1089008800	For SP 162
BSA1089018800	For SP 1600-ER



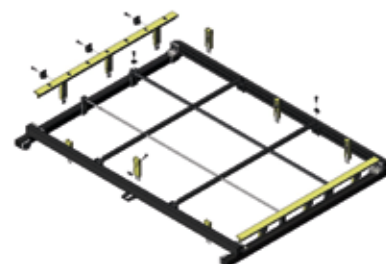
FLAT TOP TOOL KITS

Article number	Description
BSA1089019100	For SP 102/103
BSA1089016400	For SP 104
BSA1089016500	For SP 106
BSA1089019200	For SP 130
BSA1089019300	For SP 142-ER
BSA1089019400	For SP 142 -CER
BSA1089016600	For SP 145
BSA1089016700	For SP 162





UNIVERSAL TOOL KITS

Article number	Description
BSA1089015000	For SP 102/103
BSA1089015100	For SP 104
BSA1089015200	For SP 106
BSA1089015300	For SP 130
BSA1089015400	For SP 142-ER/SP 1420-ER
BSA1089015500	For SP 142-CER
BSA1089015700	UNIVERSAL FRAME KIT for SP 145
BSA1089015600	UNIVERSAL FRAME KIT for SP 162



FRAME RAIL

Article number	Description	
BSA1089009400	RAIL-FRONT SP 102/103	 FRONT
BSA1089009800	RAIL-FRONT SP 104	
BSA1089010000	RAIL-FRONT SP 106	
BSA1089010400	RAIL-FRONT SP 130	
BSA1089010800	RAIL-FRONT SP 142-ER/CER	
BSA1089018400	RAIL-FRONT SP 145	
BSA1089011200	RAIL-FRONT SP 162	
BSA1089024600	RAIL-FRONT SP 1600-ER	
BSA1089009500	RAIL-REAR SP 102/103	 REAR
BSA1089009900	RAIL-REAR SP 104	
BSA1089010100	RAIL-REAR SP 106	
BSA1089010500	RAIL-REAR SP 130	
BSA1089010900	RAIL-REAR SP 142-CER	
BSA1089011700	RAIL-REAR SP 142-ER	
BSA1089018500	RAIL-REAR SP 145	
BSA1089011300	RAIL-REAR SP 162	
BSA1089024700	RAIL-REAR SP 1600-ER	
BSA1089009600	RAIL-SIDE-LEFT SP 102/103/104	 LEFT
BSA1089010200	RAIL-SIDE-LEFT SP 106	
BSA1089010600	RAIL-SIDE-LEFT SP 130	
BSA1089011000	RAIL-SIDE-LEFT SP 142-CER	
BSA1089011400	RAIL-SIDE-LEFT SP 162	
BSA1089011800	RAIL-SIDE-LEFT SP 142-ER	
BSA1089018600	RAIL-SIDE-LEFT SP 145	
BSA1089024800	RAIL-SIDE LEFT SP 1600-ER	
BSA1089009700	RAIL-SIDE-RIGHT SP 102/103/104	 RIGHT
BSA1089010300	RAIL-SIDE-RIGHT SP 106	
BSA1089010700	RAIL-SIDE-RIGHT SP 130	
BSA1089011100	RAIL-SIDE-RIGHT SP 142-CER	
BSA1089011500	RAIL-SIDE-RIGHT SP 162	
BSA1089011900	RAIL-SIDE-RIGHT SP 142-ER	
BSA1089018700	RAIL-SIDE-RIGHT SP 145	
BSA1089024900	RAIL-SIDE-RIGHT SP 1600-ER	

FRAME ASSEMBLY COMPONENTS



LEFT



RIGHT



DOVETAIL
NUT CORNER

Article number	Description
BSA1089003800	CORNER BRACKET – LEFT
BSA1089003900	CORNER BRACKET – RIGHT
BSA1089005600	DOVETAIL NUT CORNER – BRACKET

MACHINE FRAME MOUNTING HARDWARE



BSA1089004400



BSA1089004500



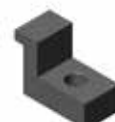
BSA1089008600



BSA1089006000



BSA1089006100



BSA1089024000



BSA1089024000



BSA1089025300



BSA1089022600



BSA1089020700



BSA1089022500



BSA1089025000



BSA1089025100



BSA1089022100

Article number	Description
BSA1089004400	QUICK LOCK CLIP (LEFT)
BSA1089004500	QUICK LOCK CLIP (RIGHT)
BSA1089008600	QUICK LOCK CLIP KIT
BSA1089006000	CENTERLINE BRACKET – FRONT MOUNT
BSA1089006100	CENTERLINE BRACKET – BOTTOM MOUNT
BSA1089024000	OVERCLAMP
BSA1089024100	STOP BRACKET
BSA1089025300	STOP BRACKET KIT
BSA1089022600	GRIPPER FINGER SUPPORT
BSA1089020700	SP 142-ER MOUNTING BRACKET
BSA1089022500	SP 142-ER MOUNTING BRACKET KIT
BSA1089025000	SP 142-ER OVERCLAMP (LEFT)
BSA1089025100	SP 142-ER OVERCLAMP (RIGHT)
BSA1089022100	SP 142-ER OVERCLAMP SET

ANGLE LOCK® KITS

QUICK SET FRAMES

QUICK SET FRAME KITS

Article number	Description
BSA1089037200	For SP 102/103
BSA1089037300	For SP 104
BSA1089037400	For SP 106
BSA1089037500	For SP 130
BSA1089037600	For SP 142-ER
BSA1089037700	For SP 142-CER
BSA1089037800	For SP 145



QUICK SET FRAME – FRONT RAIL

Article number	Description
BSA1089035900	FRONT RAIL for SP 102/103
BSA1089036000	FRONT RAIL for SP 104
BSA1089036100	FRONT RAIL for SP 106
BSA1089036200	FRONT RAIL for SP 130
BSA1089036300	FRONT RAIL for SP 142-ER/CER
BSA1089036400	FRONT RAIL for SP 145



QUICK SET FRAME – REAR RAIL

Article number	Description
BSA1089036500	REAR RAIL for SP 102/103
BSA1089036600	REAR RAIL for SP 104
BSA1089036700	REAR RAIL for SP 106
BSA1089036800	REAR RAIL for SP 130
BSA1089036900	REAR RAIL for SP 142-ER/CER
BSA1089037000	REAR RAIL for SP 145



QUICK SET FRAME – LEFT/RIGHT RAIL

Refer to standard frames (page 28).

QUICK SET FRAME – COMPONENTS



BSA1089003800



BSA1089003900



BSA1089035700



BSA1089035800



BSA1089037900



BSA1089038900



BSA1089005600



BSA1089005800



BSA1089006100



BSA1089004800



BSA1089005000



BSA1089005200



BSA1089035600



BSA1089038500

Article number	Description
BSA1089003800	CORNER BRACKET – LEFT
BSA1089003900	CORNER BRACKET – RIGHT
BSA1089035700	QUICK-SET REAR RIGHT CORNER BRACKET
BSA1089035800	QUICK-SET REAR LEFT CORNER BRACKET
BSA1089037900	QUICK SET GRID SUPPORT
BSA1089038900	QUICK SET BUSHING KIT
BSA1089005600	DOVETAIL NUT CORNER – BRACKET
BSA1089005800	DOVETAIL NUT – ACCESSORY
BSA1089006100	CENTERLINE BRACKET – BOTTOM MOUNT
BSA1089004800	SCREW – SPECIAL LOW HEAD SHCS M5 × 8mm
BSA1089005000	SCREW – SPECIAL LOW HEAD SHCS M5 × 24mm
BSA1089005200	SCREW – SHCS M5 × 16mm
BSA1089035600	GRID MOUNTING BRACKET
BSA1089038500	QUICK SET CLIP

QUICK SET FRAME – MACHINE FRAME MOUNTING HARDWARE

Refer to standard frames (page 28).

ANGLE LOCK® KITS

RECEIVER SYSTEM

RECEIVER SYSTEM FRAME KITS

Article number	Description
BSA1089032400	For SP 102-CER/SP 103-ER
BSA1089032500	For SP 104-ER
BSA1089032600	For SP 106-ER/LER/PER
BSA1089032700	For SP 130-ER
BSA1089032800	For SP 142-ER/SP 1420-ER
BSA1089032900	For SP 142-CER
BSA1089033000	For SP 145 PER
BSA1089033100	For SP 162-CER
BSA1089033200	For SP 1600-ER



RECEIVER SYSTEM RAIL KITS

Article number	Description
BSA1089034400	For SP 102/103/104
BSA1089034500	For SP 106 LER
BSA1089034600	For SP 106 PER
BSA1089034700	For SP 130-ER
BSA1089034800	For SP 142-ER
BSA1089034900	For SP 142-CER
BSA1089035000	For SP 145 PER
BSA1089035100	For SP 162-CER
BSA1089035200	For SP 1600-ER



RECEIVER SYSTEM RAIL – FRONT/REAR

Refer to standard frames (page 28).

RECEIVER SYSTEM RAIL – LEFT/RIGHT

Article number	Description
BSA1089030000	RAIL-SIDE-LEFT SP 102/103/104
BSA1089030200	RAIL-SIDE-LEFT SP 106
BSA1089030400	RAIL-SIDE-LEFT SP 130
BSA1089030600	RAIL-SIDE-LEFT SP 142-ER
BSA1089030800	RAIL-SIDE-LEFT SP 142-CER
BSA1089031000	RAIL-SIDE-LEFT SP 145
BSA1089031200	RAIL-SIDE-LEFT SP 162
BSA1089033600	RAIL-SIDE-LEFT SP 1600-ER
BSA1089029900	RAIL-SIDE-RIGHT SP 102/103/104
BSA1089030100	RAIL-SIDE-RIGHT SP 106
BSA1089030300	RAIL-SIDE-RIGHT SP 130
BSA1089030500	RAIL-SIDE-RIGHT SP 142-ER
BSA1089030700	RAIL-SIDE-RIGHT SP 142-CER
BSA1089030900	RAIL-SIDE-RIGHT SP 145
BSA1089031100	RAIL-SIDE-RIGHT SP 162
BSA1089033500	RAIL-SIDE-RIGHT SP 1600-ER



RECEIVER SYSTEM – FASTENING DEVICE

Article number	Description
BSA1089031300	RECEIVER SYSTEM FRAME CLAMP



FRAME ASSEMBLY COMPONENTS

Refer to standard frames (page 28).

ANGLE LOCK[®]

COMPONENTS

GRID MATERIAL



GRID MATERIAL



KNIFE EDGE

Article number	Description
BSA1089024200	GRID MATERIAL 16 × 2 × 2680mm
BSA1089006300	GRID MATERIAL 16 × 3 × 2680mm
BSA1089022300	GRID MATERIAL 16 × 4 × 2680mm
BSA1089006400	GRID MATERIAL 18 × 5 × 2680mm
BSA1089042300	GRID MATERIAL 22 × 2 × 2680mm
BSA1089033700	GRID MATERIAL 22 × 3 × 2680mm
BSA1089022400	GRID MATERIAL 22 × 4 × 2680mm
BSA1089006200	GRID MATERIAL 22 × 5 × 2680mm
BSA1089021000	GRID MATERIAL 22 × 6 × 2680mm
BSA1089042800	KNIFE EDGE GRID MATERIAL 22 × 5 × 2680mm

GRID CLAMPS



GRID CLAMP LOCK



BSA1089004100



BSA1089004200



BSA1089004600



BSA1089004700



BSA1089035600

Article number	Description
BSA1089003000	GRID CLAMP LOCK 2mm
BSA1089003100	GRID CLAMP LOCK 3mm
BSA1089022200	GRID CLAMP LOCK 4mm
BSA1089003200	GRID CLAMP LOCK 5mm
BSA1089003300	GRID CLAMP LOCK 6mm
BSA1089004100	GRID CLAMP – FRONT/REAR – REUSABLE
BSA1089004200	GRID CLAMP – SIDE – REUSABLE
BSA1089004600	GRID CLAMP – FRONT/REAR – WELDABLE
BSA1089004700	GRID CLAMP – SIDE – WELDABLE
BSA1089035600	GRID MOUNTING BRACKET

ROD CLAMPS



ROD CLAMP



ROD
CLAMP ASSEMBLY



SINGLE KNIFE
ROD ASSEMBLY

Article number	Description
BSA1089013800	ROD CLAMP – SIDE – Ø 6.5mm
BSA1089013900	ROD CLAMP – SIDE – Ø 9.5mm
BSA1089014200	ROD CLAMP – REAR – Ø 8mm
BSA1089019600	ROD CLAMP ASSEMBLY Ø 9.5mm for SP 130 (945mm)
BSA1089019700	ROD CLAMP ASSEMBLY Ø 9.5mm for SP 142-CER (1045mm)
BSA1089019500	ROD CLAMP ASSEMBLY Ø 9.5mm for SP 102/103 (745mm)
BSA1089014000	SINGLE KNIFE ROD ASSEMBLY 8mm for SP 104
BSA1089017000	SINGLE KNIFE ROD ASSEMBLY Ø 9.5mm for SP 106
BSA1089017100	SINGLE KNIFE ROD ASSEMBLY Ø 9.5mm for SP 145
BSA1089017200	SINGLE KNIFE ROD ASSEMBLY Ø 9.5mm for SP 162

LOWER BOARD SUPPORT

Article number	Description
BSA1089032000	LOWER BOARD SUPPORT BODY
BSA1089032100	LOWER BOARD SUPPORT ASSEMBLY



BSA1089032000



BSA1089032100

SUPPORT RAIL – FLAT TOP TOOL



SUPPORT RAIL



BSA1089020900



BSA1089002300



BSA1089005900



BSA1089023900

Article number	Description
BSA1089012300	SUPPORT RAIL for SP 102/103/104
BSA1089016800	SUPPORT RAIL for SP 106
BSA1089012400	SUPPORT RAIL for SP 130
BSA1089012500	SUPPORT RAIL for SP 142-CER
BSA1089012600	SUPPORT RAIL for SP 142-ER
BSA1089018200	SUPPORT RAIL for SP 145
BSA1089012700	SUPPORT RAIL for SP 162
BSA1089020800	SUPPORT RAIL 2740mm
BSA1089020900	SUPPORT RAIL – BENDABLE 2740mm
BSA1089004300	SUPPORT RAIL END
BSA1089002300	PIN INSERTION GUIDE TOOL
BSA1089005900	HARDENED PIN Ø 3.5 x 28mm
BSA1089023900	SPRING CLIP (SCREWLESS SUPPORT RAIL)

MOUNTING RAILS



AJUSTABLE SIDE
SCRAP SUPPORT



FLAT TOP



UNIVERSAL
MOUNTING RAIL



PARALLEL CLAMP



SCREWLESS
MOUNTING RAIL

Article number	Description
BSA1089013200	ADJUSTABLE SIDE SCRAP SUPPORT for SP 102/103
BSA1089013600	ADJUSTABLE SIDE SCRAP SUPPORT for SP 104
BSA1089013700	ADJUSTABLE SIDE SCRAP SUPPORT for SP 106
BSA1089013300	ADJUSTABLE SIDE SCRAP SUPPORT for SP 130
BSA1089013400	ADJUSTABLE SIDE SCRAP SUPPORT for SP 142
BSA1089016900	ADJUSTABLE SIDE SCRAP SUPPORT for SP 145
BSA1089013500	ADJUSTABLE SIDE SCRAP SUPPORT for SP 162
BSA1089021600	FLAT TOP – NARROW for SP 102/103/104
BSA1089021700	FLAT TOP – NARROW for SP 106
BSA1089021800	FLAT TOP – NARROW for SP 130
BSA1089021900	FLAT TOP – NARROW for SP 142
BSA1089022000	FLAT TOP – NARROW for SP 162
BSA1089012800	UNIVERSAL MOUNTING RAIL for SP 102/103/104/106
BSA1089012900	UNIVERSAL MOUNTING RAIL for SP 130
BSA1089013000	UNIVERSAL MOUNTING RAIL for SP 142/145
BSA1089013100	UNIVERSAL MOUNTING RAIL for SP 162
BSA1089004000	PARALLEL CLAMP
BSA1089012000	SIDE SCRAP SUPPORT 2740mm
BSA1089012100	SCREWLESS MOUNTING RAIL 2740mm

JOGGERS – GRID TOOL



BSA1089007700



BSA1089007800



BSA1089008400



BSA1089022700



BSA1089022800



BSA1089022900



BSA1089023300



BSA1089023400



BSA1089023500

Article number	Description
BSA1089007700	FRONT/REAR
BSA1089007800	SIDE
BSA1089008400	REAR WITH HAT
BSA1089022700	FRONT/REAR – 151mm
BSA1089022800	SIDE – 151mm
BSA1089022900	REAR WITH HAT – 151mm
BSA1089023300	FRONT/REAR – 251mm
BSA1089023400	SIDE – 251mm
BSA1089023500	REAR WITH HAT – 251mm

JOGGERS – UNIVERSAL



BSA1089007900



BSA1089008500



BSA1089023000



BSA1089023100



BSA1089023600



BSA1089023700



BSA1089008000



BSA1089023200



BSA1089023800



BSA1089039000

Article number	Description
BSA1089007900	FRONT/REAR
BSA1089008500	SIDE
BSA1089023000	FRONT/REAR 151mm
BSA1089023100	SIDE – 151mm
BSA1089023600	FRONT/REAR 251mm
BSA1089023700	SIDE – 251mm
BSA1089008000	7/16" DROP GUIDE
BSA1089023200	7/16" DROP GUIDE- 151mm
BSA1089023800	7/16" DROP GUIDE- 251mm
BSA1089039000	DROP GUIDE V2 – STANDARD SLIDE
BSA1089008100	1/4" SOLID DROP GUIDE
BSA1089008200	3/8" SOLID DROP GUIDE
BSA1089008300	5/16" SOLID DROP GUIDE

JOGGERS – SPECIAL LONG SLIDE 44MM



BSA1089038000

BSA1089038100

BSA1089038200

BSA1089038600

BSA1089038300

BSA1089038400

Article number

BSA1089038000

BSA1089038100

BSA1089038200

BSA1089038600

BSA1089038300

BSA1089038400

Description

UNIVERSAL JOGGER – FRONT/REAR – LONG SLIDE

UNIVERSAL JOGGER – SIDE – LONG SLIDE

UNIVERSAL JOGGER – 7/16" DROP GUIDE – LONG SLIDE

UNIVERSAL JOGGER – DROP GUIDE V2 – LONG SLIDE

GRID TOOL JOGGER – REAR WITH HAT – LONG SLIDE

GRID TOOL JOGGER – SIDE – LONG SLIDE

JOGGERS – UNIVERSAL AND GRID TOOL – BODY



BSA1089006500

BSA1089006600

BSA1089006800

BSA1089006700

BSA1089007100

Article number

BSA1089006500

BSA1089006600

BSA1089006800

BSA1089006700

BSA1089007100

Description

GRID TOOL JOGGER BODY – FRONT/REAR

GRID TOOL JOGGER BODY – SIDE

UNIVERSAL JOGGER BODY – 7/16" DROP GUIDE

UNIVERSAL JOGGER BODY – FRONT/REAR

UNIVERSAL JOGGER BODY – SIDE

SPECIAL JOGGERS



BSA1089021500

BSA1089025200

BSA1999844530

Article number

BSA1089021500

BSA1089025200

BSA1999844530

Description

NARROW MOUNT RAIL JOGGER – SIDE

PIN JOGGER Ø 8.0 × 61mm

BOXPLAN SLIM JOGGER Ø 7.0mm (Batch of 25)

EXTENDED JOGGER SLIDE



BSA1089014600



BSA1089014700



BSA1089014800



BSA1089014900



BSA1089021100



BSA1089021200



BSA1089021300



BSA1089021400

Article number	Description
BSA1089014600	SLIDE (151) FOR FRONT/REAR – UNIVERSAL JOGGER
BSA1089014700	SLIDE (151) FOR SIDE – GRID TOOL AND UNIVERSAL JOGGERS
BSA1089014800	SLIDE (151) FOR UNIVERSAL DROP JOGGER
BSA1089014900	SLIDE (151) FOR FRONT/REAR – GRID TOOL JOGGERS
BSA1089021100	SLIDE (251) FOR FRONT/REAR – UNIVERSAL JOGGER
BSA1089021200	SLIDE (251) FOR SIDE – GRID TOOL AND UNIVERSAL JOGGERS
BSA1089021300	SLIDE (251) FOR UNIVERSAL DROP JOGGER
BSA1089021400	SLIDE (251) FOR FRONT/REAR – GRID TOOL JOGGERS

PRESSERS



BSA1070002800



BSA1089032200



BSA1089043100



BSA1070002700



BSA1070002600



BSA1089043200



BSA1089042600



BSA1070005600



BSA1070005700



BSA1089024500



BSA1089032300



BSA1089042900



BSA1070005800



BSA1070006000



BSA1999844526



BSA1999844527



BSA05020000SA



BSA05020000SB



BSA1999844700



BSA1999844701

Article number	Description
BSA1070002800	SP-593 SPOT PRESSER
BSA1089032200	SP-593-BOARD PRESSER
BSA1089043100	SP-593 TOWER PRESSER CARTRIDGE
BSA1070002700	CL-1 TOWER PRESSER (SLOT)
BSA1070002600	CL-2 TOWER PRESSER (HOLE)
BSA1089043200	CL-2 TOWER PRESSER CARTRIDGE
BSA1089042600	CL-100 PRESSER - BOARD
BSA1070005600	CL-100 PRESSER - FOR USE WITH C-RAIL
BSA1070005700	CL-100 PRESSER - SPOT
BSA1089024500	CL-100 PRESSER WITH UNIVERSAL MOUNTING BRACKET
BSA1089032300	CL-100 SPR PRESSER
BSA1089042900	CL-1 TOWER PRESSER CARTRIDGE
BSA1070005800	FLUSH PRESSER WITH STANDARD FOOT
BSA1070006000	FLUSH PRESSER WITH SPOT FOOT
BSA1999844526	SNAP PRESSER STAND ALONE (Batch of 50)
BSA1999844527	SNAP PRESSER for SNAP RAIL (Batch of 50)
BSA05020000SA	SPIDER PRESSER
BSA05020000SB	SPIDER PRESSER SPOT
BSA1999844700	FLAT TOP PRESSER (BATCH OF 50)
BSA1999844701	SPOT PRESSER (BATCH OF 50)

PRESSER RAILS



BSA1070003100



BSA1070003200



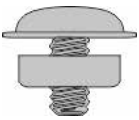
BSA0502231700



BSA1999844529

Article number	Description
BSA1070003100	PRESSER C-RAIL
BSA1070003200	PRESSER C-RAIL (BENDABLE)
BSA0502231700	PRESSER RAIL – LR-325
BSA1999844529	SNAP RAIL 1500 × 13mm (Batch of 30)

PRESSER ACCESSORIES



BSA1999844528



BSA1089037100



BSA1089031700



BSA1070003600



BSA1070003000



BSA1070003500

Article number	Description
BSA1999844528	END STOP for SNAP PRESSER (Batch of 50)
BSA1089037100	PRESSER LINK CLIP
BSA1089031700	UNIVERSAL MOUNTING BRACKET KIT
BSA1070003600	MOUNTING CLIP WITH SCREWS
BSA1070003000	SPOT PRESSER FOOT
BSA1070003500	STANDARD PRESSER FOOT
BSA1070002500	PINS FOR CL-1 AND CL-2 PRESSERS (50 PCS)
BSA1070003400	CLIPS FOR CL-1 AND CL-2 PRESSERS (50 PCS)
BSA1070006600	T-RAIL DRILL FIXTURE KIT

UPPER TOOL – ACCESSORIES

Article number	Description
BSA1089042200	MALE PUSHER STANDOFF Ø 8 × 38mm
BSA1089042700	MALE PUSHER STANDOFF Ø 8 × 30mm



BSA1089042200



BSA1089042700

LOWER TOOL – ACCESSORIES

Article number	Description
BSA1089016200	THICK ADHESIVE SPACER 8mm
BSA1089016300	THICK ADHESIVE SPACER 11mm
BSA1089031400	ADHESIVE RUNNER 3 × 5 × 2680mm
BSA1089031500	ADHESIVE RUNNER 3 × 6 × 2680mm
BSA1089031600	ADHESIVE RUNNER 3 × 8 × 2680mm
BSA1089043500	GRID TAPE 25mm × 184mm



ANGLE LOCK® – COMPONENTS



BSA1089002100



BSA1089024300



BSA1089002400



BSA1070003300



BSA1089005600



BSA1089005900



BSA1089005500



BSA1089016000



BSA1089016100



BSA1089005400



BSA1089005200



BSA1089004800



BSA1089038800



BSA1089004900



BSA1089005000



BSA1089015900

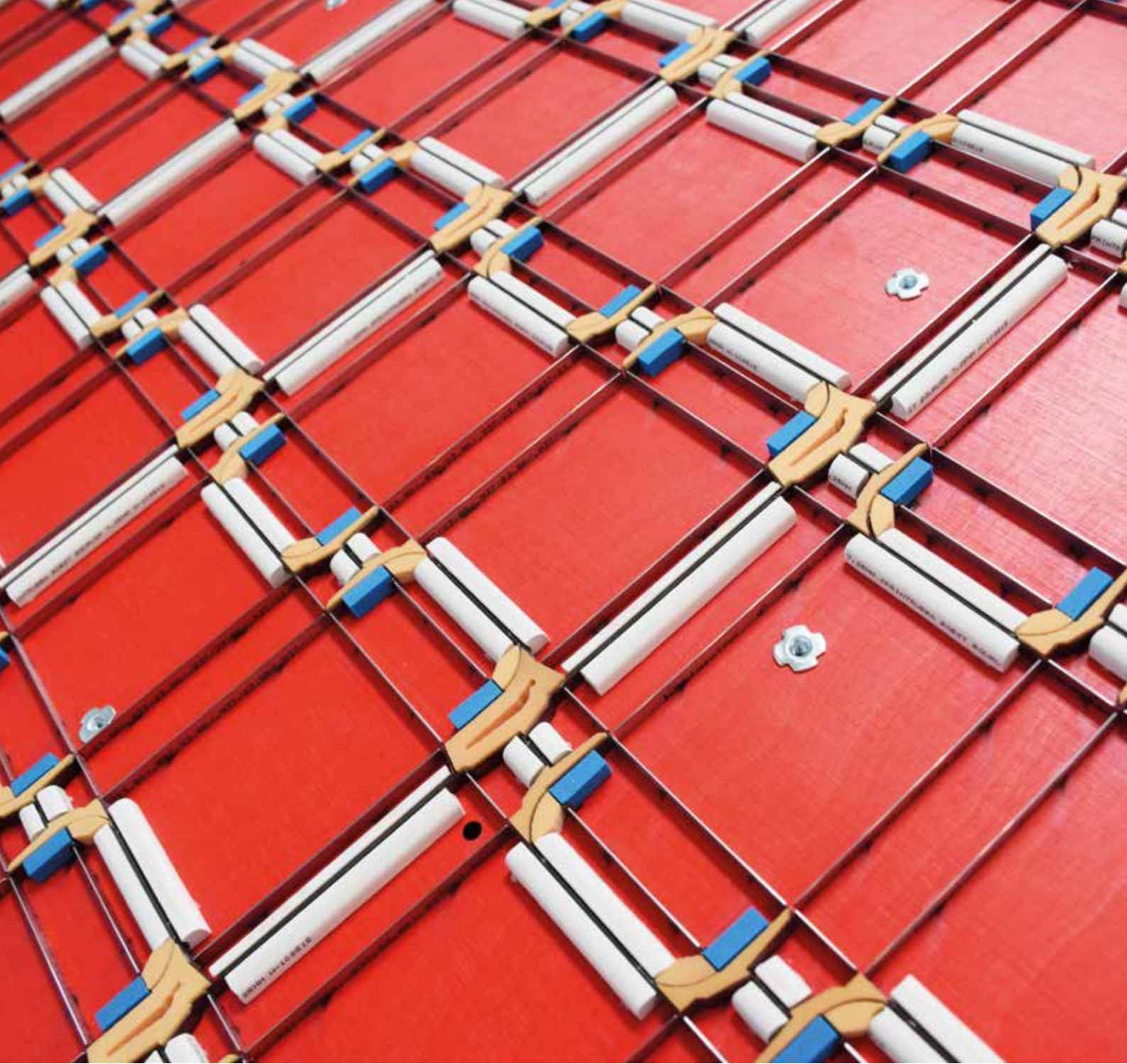


BSA1089015800



BSA1089005100

Article number	Description
BSA1089002100	COUNTERBORE CUTTER 5mm
BSA1089024300	COUNTERSINK CUTTER 3mm
BSA1089002200	COUNTERSINK CUTTER 4mm
BSA1089002400	COUNTERBORE/SINK KIT
BSA1070003300	3mm T-HANDLE WRENCH
BSA1089005600	DOVETAIL NUT CORNER – BRACKET
BSA1089005700	DOVETAIL NUT – QUICK LOCK CLIP
BSA1089005800	DOVETAIL NUT ACCESSORY
BSA1089005900	HARDENED PIN Ø 3.5 × 28mm
BSA1089005500	SCREW – FLAT SHCS – M3 × 8mm
BSA1089016000	SCREW – FLAT SHCS – M3 × 25mm
BSA1089016100	SCREW – FLAT SHCS – M4 × 25mm
BSA1089005400	SCREW – LOW HEAD SHCS M5 × 6mm
BSA1089038700	SCREW – LOW HEAD SHCS M5 × 16mm
BSA1089004800	SCREW – SPECIAL LOW HEAD SHCS M5 × 8mm
BSA1089038800	SCREW – SPECIAL LOW HEAD SHCS M5 × 16mm
BSA1089004900	SCREW – SPECIAL LOW HEAD SHCS M5 × 20mm
BSA1089005000	SCREW – SPECIAL LOW HEAD SHCS M5 × 24mm
BSA1089015900	SCREW – STANDARD SHCS M5 × 10mm
BSA1089015800	SCREW – STANDARD SHCS M5 × 20mm
BSA1089005100	SCREW – BUTTON SHCS – M6 × 12mm



CONVERTING

QUICKLOCKING SYSTEMS



BOXPLAN EASY LOCKER*

Article number	Description
BSA1999110300	For SP 102-E/SE
BSA1999110301	For SP 102-CE/CE II/CER/CER II
BSA1999110302	For SP 103-E/ER
BSA1999110303	For SP 104-E/ER
BSA1999110305	For SP 130-E/ER
BSA1999110311	For SP 142-E/ER
BSA1999110306	For SP 142-CE/CER
BSA1999110307	For MASTERCUT 145
BSA1999110308	For EXPERTCUT 145
BSA1999110309	For SP 1600-E/ER
BSA1999110310	For SP 162-CE/CER

All BOXPLAN Easy Lockers are modifications of existing cutting frames.



BOXPLAN SPEED LOCK 1*

Article number	Description
BSA1999112300	For SP 102-E/SE
BSA1999112301	For SP 102-CE/CE II/CER/CER II
BSA1999112302	For SP 103-E/ER
BSA1999112303	For SP 104-E/ER
BSA1999112304	For SP 130-E/ER
BSA1999112305	For SP 142-E/ER
BSA1999112306	For SP 142-CE/CER
BSA1999112307	For SP 1600-E/ER
BSA1999112308	For SP 162-CE/CER



BOXPLAN SPEED LOCK 2*

Article number	Description
BSA1999112313	For SP 102-E/SE
BSA1999112314	For SP 102-CE/CE II/CER/CER II
BSA1999112315	For SP 103-E/ER
BSA1999112316	For SP 104-E/ER
BSA1999112317	For SP 130-E/ER
BSA1999112318	For SP 142-E/ER
BSA1999112319	For SP 142-CE/CER
BSA1999112320	For MASTERCUT 145
BSA1999112321	For EXPERTCUT 145



* When ordering, please provide the dedicated Quicklocking SP specification form provided by your local BOBST office.

BOXPLAN BLANK LOCK*

Article number	Description
BSA1999110200	For SP 102-CE/CE II/CER/CER II
BSA1999110201	For SP 103-E/ER
BSA1999110202	For SP 104-E/ER
BSA1999110203	For SP 130-E/ER
BSA1999110207	For SP 142-E/ER
BSA1999110204	For SP 142-CE/CER
BSA1999110205	For SP 1600-E/ER
BSA1999110206	For SP 162-CE/CER



BOXPLAN SHEET BLANKER*

Article number	Description
BSA1999112500	For SP 102-CE/CE II/CER/CER II
BSA1999112501	For SP 103-E/ER
BSA1999112502	For SP 104-E/ER
BSA1999112503	For SP 130-E/ER
BSA1999112504	For SP 142-E/ER
BSA1999112505	For SP 142-CE/CER
BSA1999112506	For SP 1600-E/ER
BSA1999112507	For SP 162-CE/CER



When ordering, please specify whether you have a Flex rack system installed or not.

CHASE CHANGER

Article number	Description
B-133.001	CHASE CHANGER

This product requires a technical analysis.
Please contact your local BOBST office for quotation requests.



* When ordering, please provide the dedicated Quicklocking SP specification form provided by your local BOBST office.

BOXPLAN SETUP TABLE

Article number	Description
BSA1999110400	For SP 102-E/SE
BSA1999110401	For SP 102-CE/CE II/CER/CER II
BSA1999110402	For SP 103-E/ER
BSA1999110403	For SP 104-E/ER
BSA1999110404	For NOVACUT 106-E/ER
BSA1999110405	For MASTERCUT 106 (Sprinter)
BSA1999110406	For EXPERTCUT 106 (Spanther)
BSA1999110407	For SP 130-E/ER
BSA1999110408	For SP 142-E/ER
BSA1999110409	For SP 142-CE/CER
BSA1999110410	For MASTERCUT 145 (Sprinter)
BSA1999110411	For EXPERTCUT 145 (Spanther)
BSA1999110412	For SP 1600-E/ER
BSA1999110413	For SP 162-CE/CER



PRE-SETTING TABLE

Article number	Description
0-105.002	PRE-SETTING TABLE

This product requires a technical analysis.

Please contact your local BOBST office for quotation requests.



CUTTING STATION



MAKE READY

MAKE READY TAPE

Article number	Description
BSA1574006200	BLUE – 3 × 0.03 mm
BSA1574006300	BLUE – 6 × 0.03 mm
BSA1574006900	BLUE – 12 × 0.03 mm
BSA1574007000	BLUE – 20 × 0.03 mm
BSA1574007100	BLUE – 30 × 0.03 mm
BSA1574006400	RED – 3 × 0.05 mm
BSA1574006500	RED – 6 × 0.05 mm
BSA1574007200	RED – 12 × 0.05 mm
BSA1574007300	RED – 20 × 0.05 mm
BSA1574007400	RED – 30 × 0.05 mm
BSA1574006600	YELLOW – 3 × 0.08 mm
BSA1574006700	YELLOW – 6 × 0.08 mm
BSA1574007500	YELLOW – 12 × 0.08 mm
BSA1574007600	YELLOW – 20 × 0.08 mm
BSA1574007700	YELLOW – 30 × 0.08 mm



MAKE READY PAPER

Article number	Description
BSA1086034000	800 × 1100 × 0.031 mm
BSA1086034100	1100 × 1600 × 0.031 mm



CARBON PAPER

Article number	Description
BSA1574006000	720 × 1020 × 0.075 mm



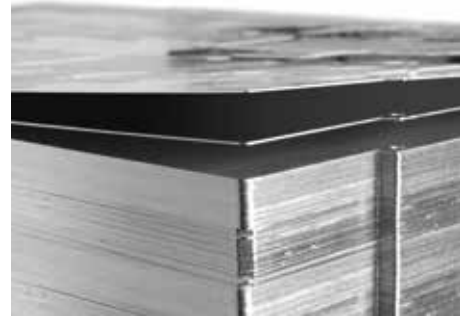
PATCH SHEET

Article number	Description
BSA1086013600	720 × 1030 × 0.10 mm
BSA1086032800	770 × 1090 × 0.10 mm
BSA1086013700	1000 × 1310 × 0.10 mm
BSA1086013800	1110 × 1440 × 0.10 mm
BSA1086102800	1110 × 1500 × 0.10 mm



CUTTING PLATES

Machine Type	Machine Name
0570	SP 76-E / EXPERTCUT 76 E
0571 / 0532 / 0539	SP 102- / -E / -S / -SE, SP 102- II / -E II, SP EVOLINE 102 / EVOLINE 102 E, SP EVOLINE 102 + / EVOLINE 102 E +
0581 / 0591	SP 102-CE / CEII, SP 102-CER / CERII
0578	SP 103-E / -ER
0578	SP 104-E / -ER
0538 / 0564	SPERIA 106 E, NOVACUT 106 E, COMMERCIAL 106
0533 / 0534 / 0557 / 0565	SPRINTERA 106 PER, MASTERCUT 106 PER/PER 3.0, SPANThERA 106 LE/LER/PE/PER, EXPERTCUT 106 LE/LER/PE/PER, EXPERTCUT 106 LE 2.0/LER 2.0/PE 2.0/PER 2.0/LER 3.0/PER 3.0, NOVACUT 106 3.0/E 3.0/ER 3.0, SP 106 3.0/E 3.0/ER 3.0/PER 3.0, VISIONCUT 106 LE/LE 3.0/LER 3.0/PE 3.0
0573 / 0577	SP 130-E/-SE/-EII, SP 130-ER/-SER/-ERII
0574 / 0597	SP 142-E/-ER, SPERIA 142-E, NOVACUT 142 E, SP 142-CER/CERII
0566	SPANThERA 145 PER, SPRINTERA 145 PER, EXPERTCUT 145 PER, MASTERCUT 145 PER
0588 / 0598	SP 162-CE, SP 162-CER
0657	SPO 1575
0651 / 0652 / 0658 / 0670	SPO 160 VISION/VISIONCUT, SPO VISION 160 / -PR, SPO 160-S, EXPERTCUT 1.6/1.6 PR
0663 / 0666	SPO 1600, SPO160-A/-APR
0669	MASTERCUT 1.7 LH/ 1.7 RH
0662 / 0665	SPO 2000, SPO 203-A/-APR
0669	MASTERCUT 2.1 LH/ 2.1 RH



1 mm – 18 HRC	1 mm – 28 HRC	1 mm – 35 HRC	1 mm – 50 HRC	1.2mm -35HRC	1.4mm - 35HRC
BSA0287122100	BSA0287179700	BSA0287199900	Not available	BSA0287200300	BSA0287200400
BSA0655240100	BSA0320111500	BSA0320126100	BSA0320119700	BSA0320126600	BSA0320126700
BSA0695340100	BSA0695342300	BSA0695346200	BSA0695344500	BSA0695346600	BSA0695346700
BSA0260169000	BSA0260205600	BSA0260225500	BSA0260219600	BSA0260225700	BSA0260225800
BSA0260190300	BSA0260205700	BSA0260225600	BSA0260219700	BSA0260225900	BSA0260226000
BSA0565102100	BSA0565106400	BSA0565200400	BSA0565125500	BSA0565200600	BSA0565200500
BSA0323344800	BSA0323344900	BSA0323535800	BSA0323476400	BSA0323535900	BSA0323536000
BSA0690311000	BSA0690327800	BSA0690329100	BSA0690328300	BSA0690329400	BSA0690329500
BSA0692254400	BSA0222138100	BSA0222143000	BSA0222138700	BSA0222143200	BSA0222143300
BSA0325111400	BSA0325203700	BSA0325665300	BSA0325163600	BSA0325679400	BSA0325679500
BSA0681188100	BSA0231123200	BSA0231138800	BSA0231123300	BSA0231140300	BSA0231140400
BSA0480668100	BSA0480668500	BSA0480677400	Not available	BSA0480677500	BSA0480677600
BSA0160133100	BSA0160117100	BSA0160329200	BSA0160132900	BSA0160330300	BSA0160330400
BSA0635287000	BSA0635307700	BSA0635327100	BSA0635305900	BSA0635327200	BSA0635327300
BSA0175251200	BSA0175200700	BSA0175289000	BSA0175259500	Not Available	Not Available
BSA0291133200	BSA0291149600	BSA0291155000	BSA0291140700	Not Available	Not Available
BSA0177251200	BSA0177200700	BSA0177289000	BSA0177259500	Not Available	Not Available

FORM SHOP SUPPLY

NICK CHISEL

Article number	Description
BSA1057015400	0.3mm
BSA1057015500	0.4mm
BSA1057015600	0.5mm
BSA1057015700	0.6mm
BSA1057015800	0.7mm
BSA1057015900	0.8mm
BSA1057016000	0.9mm



MISCELLANEOUS



BSA1999452800



BSA1999002300

Article number	Description
BSA1999452800	COUNTER PIN
BSA1999002300	COUNTER PIN REMOVAL TOOL

STRIPPING STATION



CONSUMABLES

LOWER STRIPPING PINS



BSA1999844574



BSA1999844573



LOWER STRIPPING
PIN RED



BSA05020000MQ



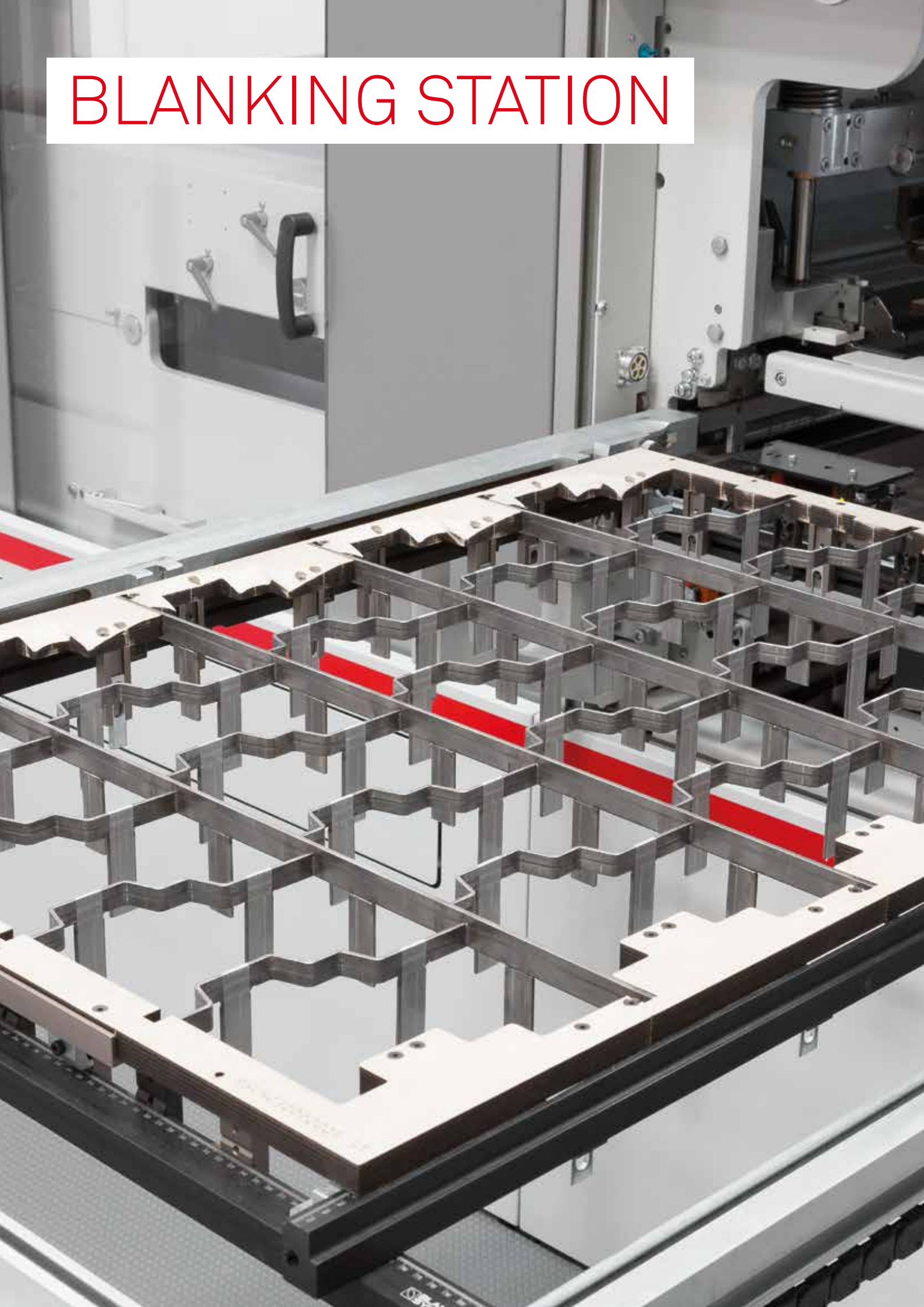
BSA05020000 H



BSA05020000LZ

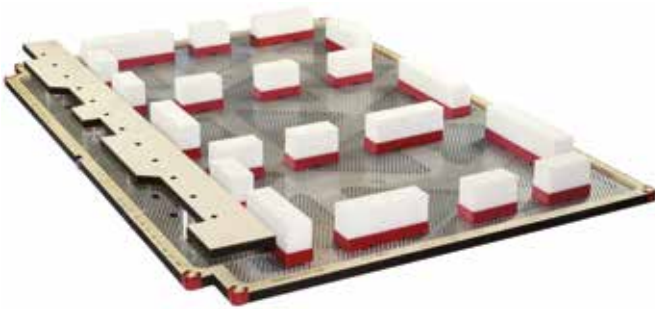
Article number	Description
BSA1999844574	LOWER STRIPPING PIN GOLD Ø 8/4 mm (Batch of 50)
BSA1999844573	LOWER STRIPPING PIN GOLD Ø 8/2.5 mm (Batch of 50)
BSA1088000300	LOWER STRIPPING PIN RED Ø 11/2 mm
BSA1088000200	LOWER STRIPPING PIN RED Ø 11/4 mm
BSA05020000TD	LOWER STRIPPING PIN RED Ø 11/4 mm (Batch of 200)
BSA05020000MQ	LOWER STRIPPING PIN WHITE Ø 15/4 mm
BSA1053025000	HOLLOW KEY
BSA05020000 H	LOWER PIN HOLDER
BSA05020000LZ	SUPPORT CLAMP (Batch of 6)

BLANKING STATION



UPPER BLANKING TOOLS

BOXPLAN BLANK FIX SET



Article number	Description
BSA1999844695	BLANK FIX FORMAT 102
BSA1999844696	BLANK FIX FORMAT 103
BSA1999844697	BLANK FIX FORMAT 104
BSA1999112600	BLANK FIX FORMAT 106
BSA1999844698	BLANK FIX FORMAT 130
BSA1999844699	BLANK FIX FORMAT 142
BSA1999112601	BLANK FIX FORMAT 145
BSA1999112602	BLANK FIX FORMAT 162

When ordering, please provide your machine type and number.

BOXPLAN BLANK FIX TABLE



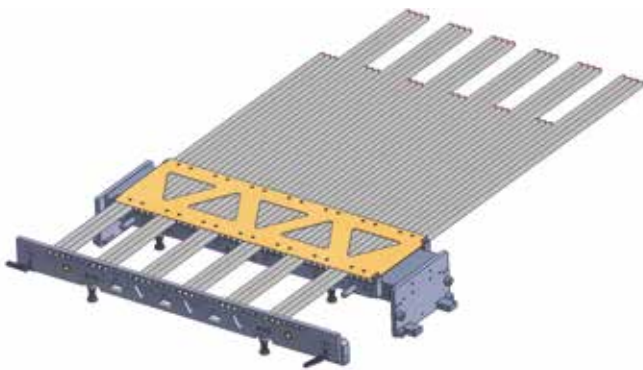
Article number	Description
BSA1999112900	Format up to 1120mm maximum
BSA1999112901	Format up to 1620mm maximum

BOXPLAN BLANKING BLOCKS

Article number	Description
BSA1999112603	87 × 44 mm (Batch of 4)
BSA1999112604	143 × 44 mm (Batch of 4)
BSA1999112605	200 × 44 mm (Batch of 4)



NON-STOP SYSTEMS/ FLEX RACK



	BOXPLAN FLEX RACK	BOXPLAN FRONT LOCKING BAR	BOXPLAN NON STOP BAR batch of 10
SP 102-CER/CER II	BSA1999110500	BSA1999110501	BSA1999110502
SP 103-E/R	BSA1999110600	BSA1999110601	BSA1999110602
SP 104-E/R II	BSA1999110700	BSA1999110701	BSA1999110702
NOVACUT 106 E/R	BSA1999110800	BSA1999844658	BSA1999844657
VISIONCUT 106 E/R	BSA1999844690	BSA1999844692	BSA1999844691
SPANThERA 106	BSA1999111000	BSA1999111001	BSA1999111002
SPRINTERA 106	BSA1999110900	BSA1999110901	BSA1999110902
EXPERTCUT 106	BSA1999111200	BSA1999111201	BSA1999111202
MASTERCUT 106	BSA1999111100	BSA1999111101	BSA1999111102
SP 130-E/R	BSA1999111300	BSA1999111301	BSA1999844662
SP 142-E/R	BSA1999111400	BSA1999111401	BSA1999111402
SP 142-CER/CER II	BSA1999111500	BSA1999111501	BSA1999111502
SPANThERA 145	BSA1999111700	BSA1999111701	BSA1999111702
SPRINTERA 145	BSA1999111600	BSA1999111601	BSA1999111602
EXPERTCUT 145	BSA1999112000	BSA1999112001	BSA1999112002
MASTERCUT 145	BSA1999111900	BSA1999111901	BSA1999111902
SP 162-CER	BSA1999112100	BSA1999112101	BSA1999112102

When ordering, please provide your machine type and number.

Non-contractual information.
BOBST reserves the right to modify the content
of this document at any time.
©BOBST SA 2018

Printed in Switzerland
BSA096100286 052 01



For more information
www.bobst.com