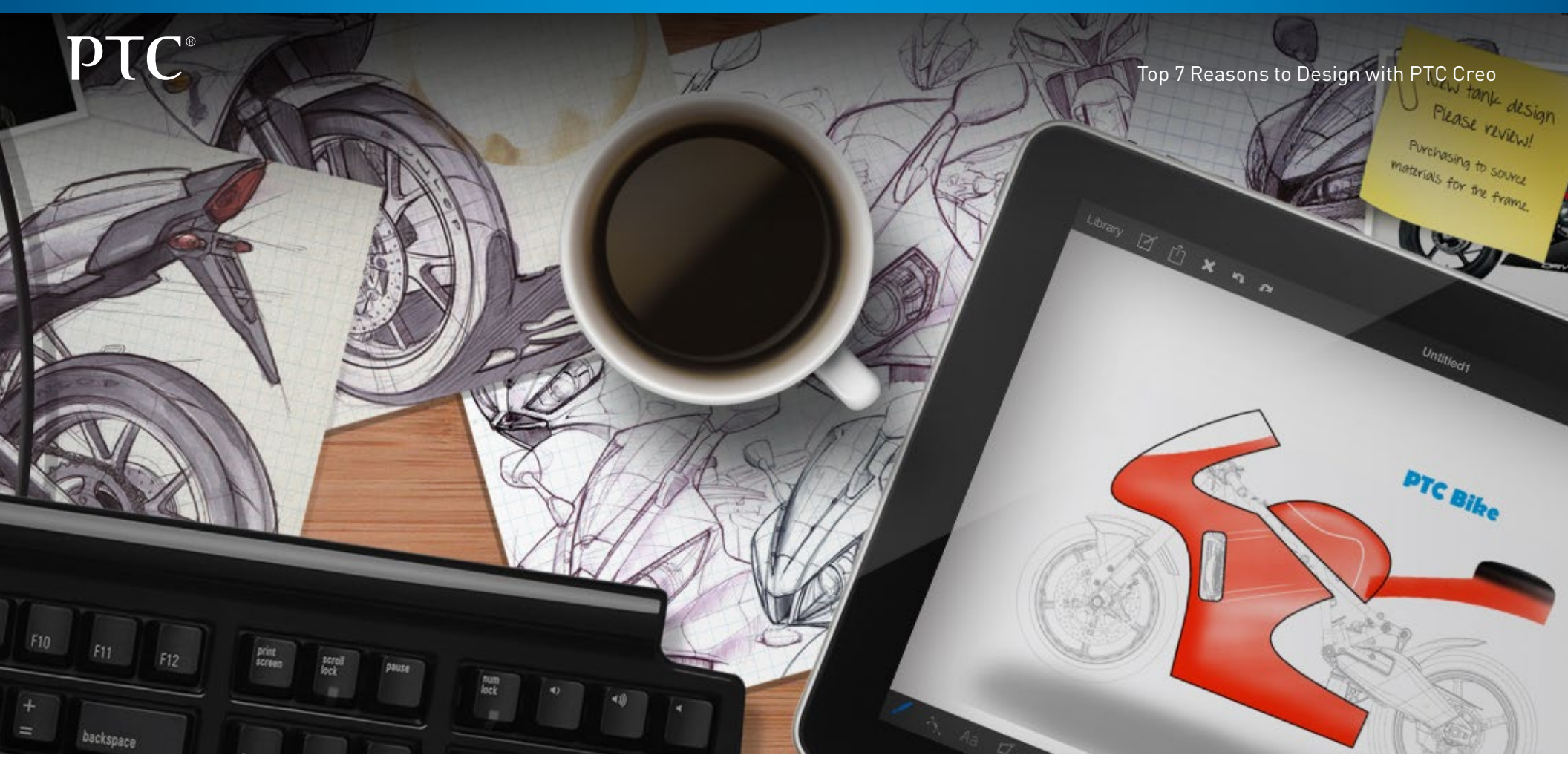


Top 7 Reasons to Design with PTC Creo®





It's no secret that you're under pressure to develop more and better products in less time. Your 3D CAD solution should enable your best work, allowing you to make the most of innovative ideas quickly and to add advanced capabilities when you need them. **The tool you need is PTC Creo.**

PTC delivers the most scalable range of 3D CAD product development packages on the market today. PTC Creo packages are easy to use, competitively priced, and always upgradeable so they meet your specific engineering design needs and varied business requirements as you grow. **PTC Creo. Never compromise.**

1 Work More Efficiently with Parts and Assemblies

No part design is beyond PTC Creo, and loading assemblies shouldn't be like playing a game of chance. With PTC Creo Parametric you can retrieve your assembly and get started faster. When the assembly loads, you see a simplified representation. The software loads the relevant detail you need when you need it. Search your model tree with a single right click. Use 'view changes' to quickly and easily find what's been modified in your assembly. It's just as easy to restructure, rename, or reorder components. Finally, the component placement constraints and 3D Dragger offer more intuitive workflows. Just think what you'll create with the extra time you have.



2 Easily Transform Your 2D Concepts into 3D Models

Your concept designs deserve better than a napkin. Capture your inspirations with **PTC Creo Sketch** (a free download), and when you're done, transfer your ideas to PTC Creo Parametric. Directly open your sketch onto a plane and display it along with other 2D and 3D geometry. You can easily move, rotate, and even scale the sketch. Who knows what you'll design thanks to this accelerated process?



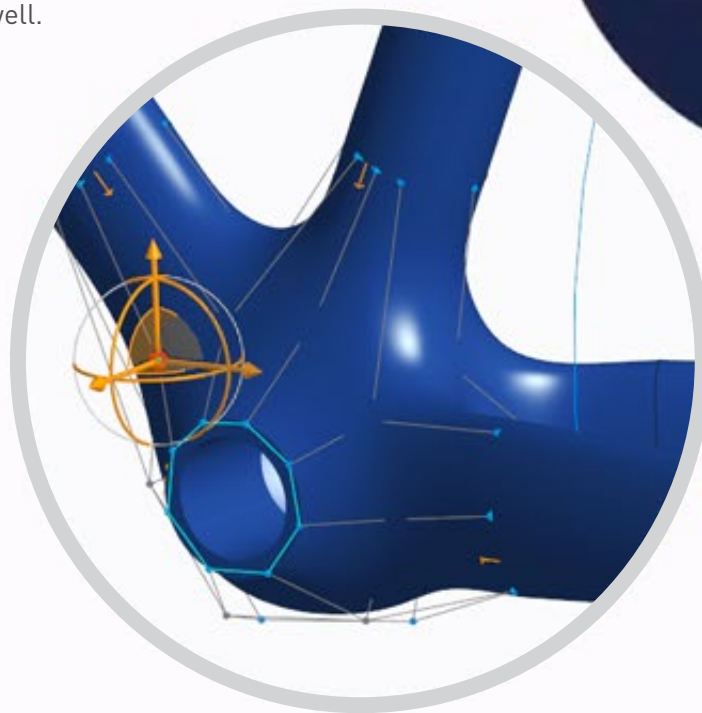
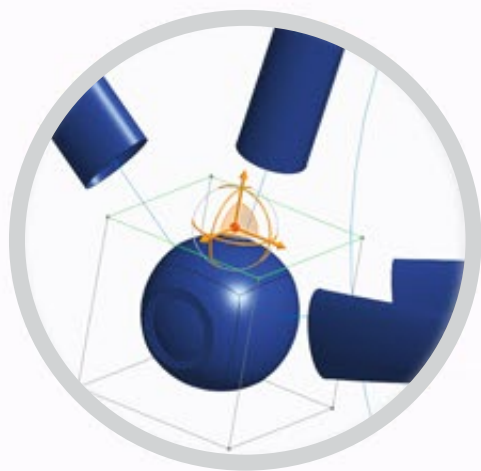
3 Conquer Late Stage Design Changes

You still remember the name of the guy from Marketing who needed that design change on a Friday afternoon. Thanks to flexible modeling capabilities in PTC Creo, you can accommodate even the most radical late-stage design changes. Quickly. Never again get stuck rebuilding a model because you couldn't update it without breaking the original constraints. Instead, select and edit geometry and then head off for vacation knowing that the entire design will automatically update. Save time, reduce errors, and send Marketing a post card.



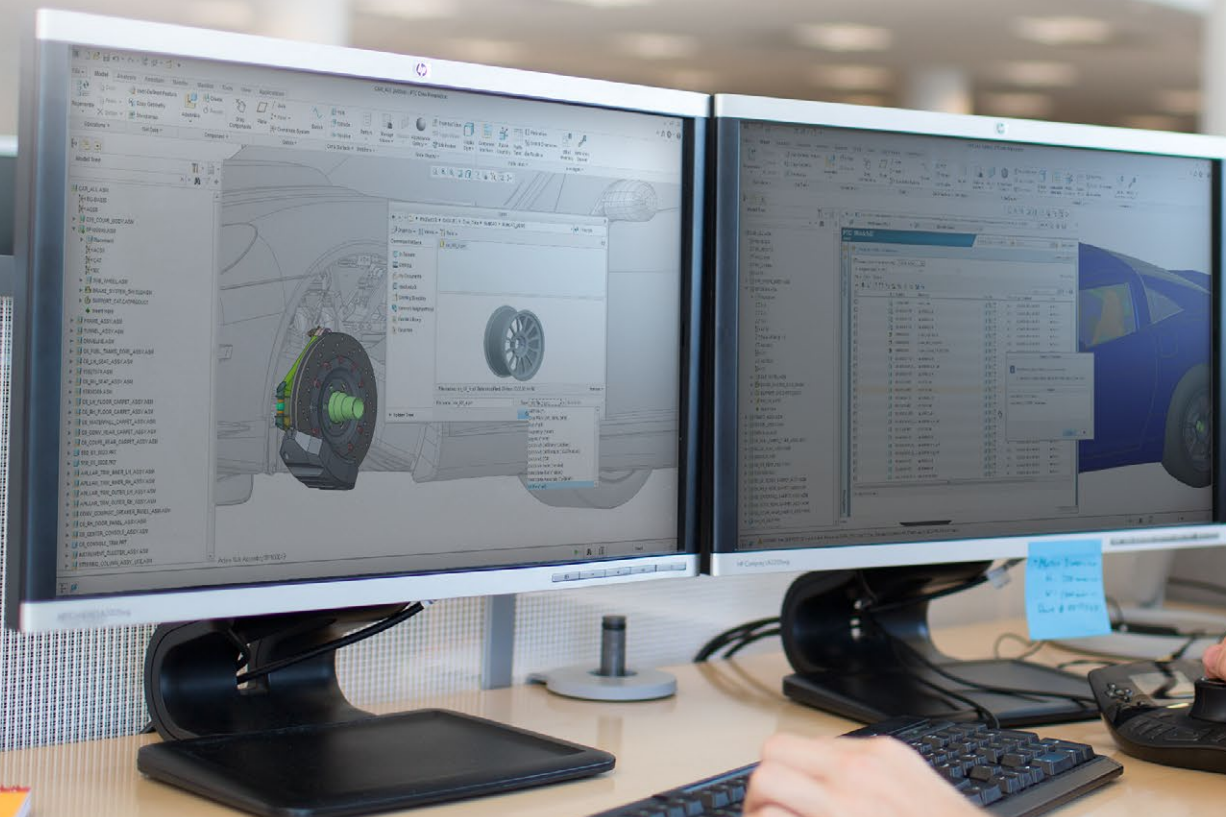
4 Quickly Create Freeform Shapes and Surfaces during Concept Design

You don't need to be a ceramic artist to appreciate how fun and easy it is to model forms with clay. You just pick it up and start shaping something. We've designed the Freestyle modeling features inside **PTC Creo Parametric** to give you much the same experience. Start with a primitive shape, like a cube or a sphere, and use intuitive tools to push and pull until you have the design you want, complete with curvature continuous production ready surfaces. If you're designing something like the pedal location geometry for a bicycle, you'll need to align your freeform geometry directly to existing parametrically controlled geometry. The Align capability inside Freestyle makes this easy. A few clicks and you're done. You've just added design intent to freestyle geometry and saved significant time as well.



5 Overcome the Challenges of Your Multi-CAD Environment with Unite Technology

Do you consider a career change each time a customer or supplier sends you a model on a different CAD system? With PTC Creo's **Unite technology**, you can open data from common CAD systems directly into PTC Creo. No need to import and convert data you are not changing and no need for the original authoring CAD system. Instead of worrying about lost design intent, you'll be enjoying the benefits of collaboration: product quality, desirability and on-time delivery. The **PTC Creo Collaboration Extensions** make your job even easier. You can integrate updates to non-PTC Creo data seamlessly as well as exchange PTC Creo models in the most common CAD formats (including CATIA, Siemens NX, and SolidWorks) without the presence of licenses from these software systems.



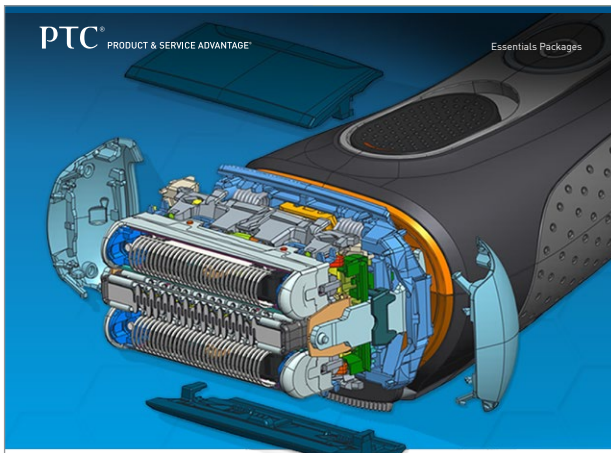


6 Master PTC Creo Functionality with PTC University

We think the letters P, T and C spell CAD. We also want you to get the most from the software, so PTC Creo ensures that, whatever your goals, you are able to learn quickly. For example, when you start the software, you will now see a dedicated window with all the new content in your release. Our Getting Started tutorials and guides have also been included to give new users a jumpstart. You'll find that PTC Creo Parametric has a revamped help system built on Google® indexing. Help is now fully searchable on the web, offering faster access to information when combined with the PTC Learning Connector, a context-sensitive learning tool embedded in PTC Creo. Learn on the fly without interrupting your workflow.

7 Be Confident in Your Ability to Adapt with PTC Creo's Scalable Software

Nobody ever wants less closet space and it's the same with software. You know PTC Creo offers strategic design advantages: a suite of product design tools with a broad range of capabilities ranging from simulation to computer aided manufacturing and product data management. Just as important, your **PTC Creo package** is fully customizable. Mix and match to meet your own changing needs or to support your expanding organization. You will never outgrow PTC Creo.



PTC® PRODUCT & SERVICE ADVANTAGE® Essentials Packages

PTC® CREO® PARAMETRIC ESSENTIALS PACKAGES

Powerful 3D CAD solutions optimized for your product development tasks

Product design firms and manufacturing companies are under constant pressure to develop more products in less time, without sacrificing innovation or quality.

PTC's 3D product design solution, PTC Creo Parametric, provides engineers with the right tools to achieve the highest quality designs in the fastest possible time.

PTC delivers the most scalable range of 3D CAD product development packages on the market today. Available exclusively through PTC Value Added Resellers, the Essentials Packages are easy to use, competitively priced and always upgradeable—to meet the varied needs of your

specific engineering design tasks and business requirements as you grow.

No matter which package you choose, users will be able to take advantage of a powerful, intuitive, and comprehensive set of 3D CAD capabilities.

And since it is an integral part of PTC's Product Development System, your 3D CAD solution will seamlessly connect to PTC's other industry-leading solutions, including PTC Windchill® for product data/product lifecycle management (PDM/PLM) and PTC Mathcad® for engineering calculations.

Page 1 of 9 PTC.com

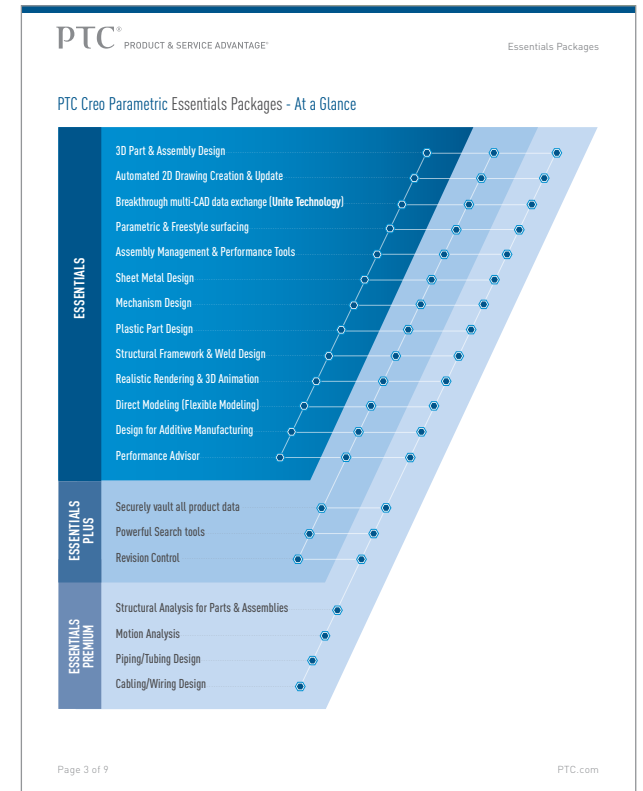


PTC® PRODUCT & SERVICE ADVANTAGE® Essentials Packages

PTC® CREO® Parametric Essentials Packages

- 3D Part & Assembly Design
- Automated 2D Drawing Creation
- Assembly Performance
- Unite Technology
- Exact Modeling
- Parametric & Freestyle Surfacing
- Realistic Rendering
- Hybrid Design
- Hybrid Analysis
- Structural Design
- Plastic Part Design
- Structural Framework & Weld Design
- Design for Additive Manufacturing
- Structural Analysis
- Product Data Management
- Piping & Cabling Design

Page 3 of 9 PTC.com



PTC® PRODUCT & SERVICE ADVANTAGE® Essentials Packages

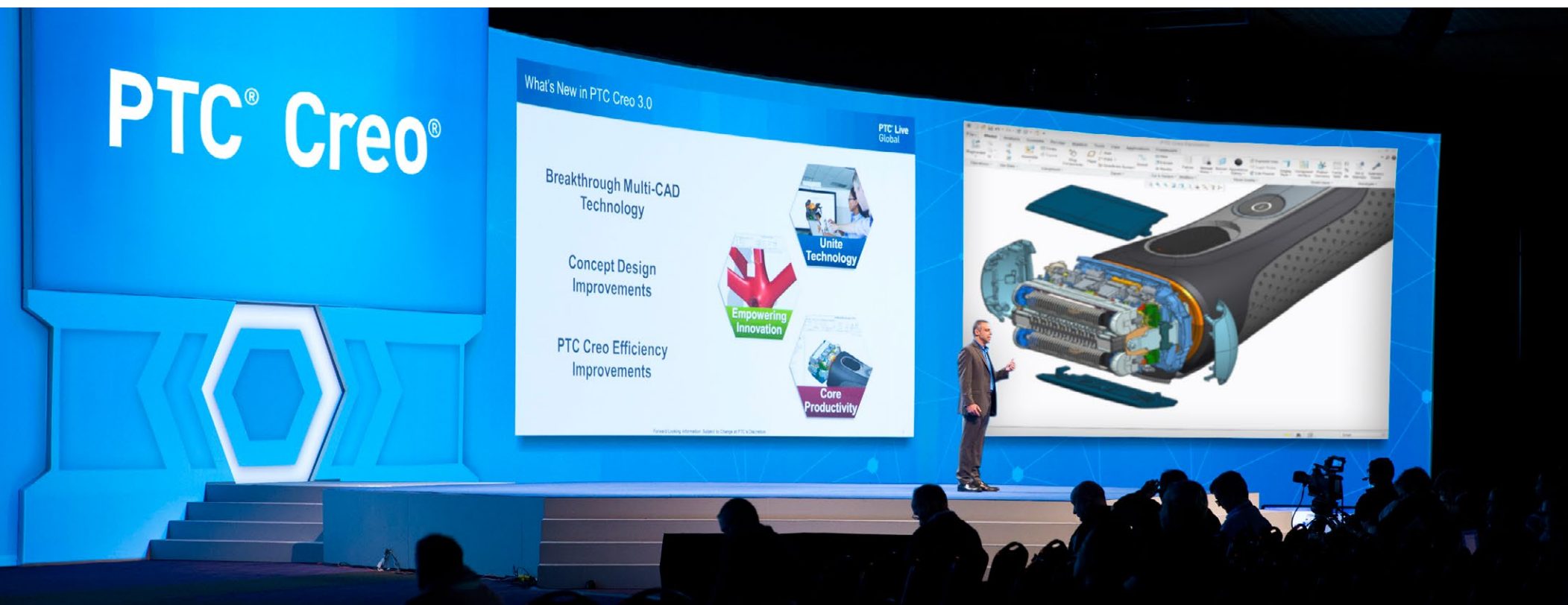
PTC Creo Parametric Essentials Packages - At a Glance

- ESSENTIALS**
 - 3D Part & Assembly Design
 - Automated 2D Drawing Creation & Update
 - Breakthrough multi-CAD data exchange (Unite Technology)
 - Parametric & Freestyle surfacing
 - Assembly Management & Performance Tools
 - Sheet Metal Design
 - Mechanism Design
 - Plastic Part Design
 - Structural Framework & Weld Design
 - Realistic Rendering & 3D Animation
 - Direct Modeling (Flexible Modeling)
 - Design for Additive Manufacturing
 - Performance Advisor
- ESSENTIALS PLUS**
 - Securely vault all product data
 - Powerful Search tools
 - Revision Control
- ESSENTIALS PREMIUM**
 - Structural Analysis for Parts & Assemblies
 - Motion Analysis
 - Piping/Tubing Design
 - Cabling/Wiring Design

Page 3 of 9 PTC.com

Trust the Creators of Innovative 3D CAD Solutions

We invented 3D parametric CAD. We know that design professionals can't risk having tools that jeopardize their product, process, or productivity. With PTC Creo, you never compromise. Tens of thousands of organizations worldwide rely on PTC Creo to give them the newest, most innovative 3D CAD capabilities for their detailed design process. Whatever the design tasks, the PTC Creo software package can make the job quick and easy, leaving you – and everyone on your team – free to focus on realizing the creative potential that will move your business forward.



© 2015, PTC Inc. All rights reserved. Information described herein is furnished for informational use only, is subject to change without notice, and should not be taken as a guarantee, commitment, condition or offer by PTC. PTC, the PTC logo, Product & Service Advantage, Creo, Elements/Direct, Windchill, Mathcad, Arbortext, PTC Integrity, Servigistics, ThingWorx, ProductCloud and all other PTC product names and logos are trademarks or registered trademarks of PTC and/or its subsidiaries in the United States and other countries. All other product or company names are property of their respective owners.

J6022-Top-7-Reasons-to-Buy-PTC-Creo-EN-1015