



# TOPAZ ReMask V3 QUICK START GUIDE



Topaz ReMask is a masking solution that offers professional results while cutting down on masking and extraction time. It is designed to tackle some of the most common photography and design tasks such as isolating specific image elements, background replacement, compositions, and adjusting selections with color and special effects. The advanced technology that backs ReMask makes the masking process quicker and easier than ever before - even for the trickiest masking tasks such as hair and fur.

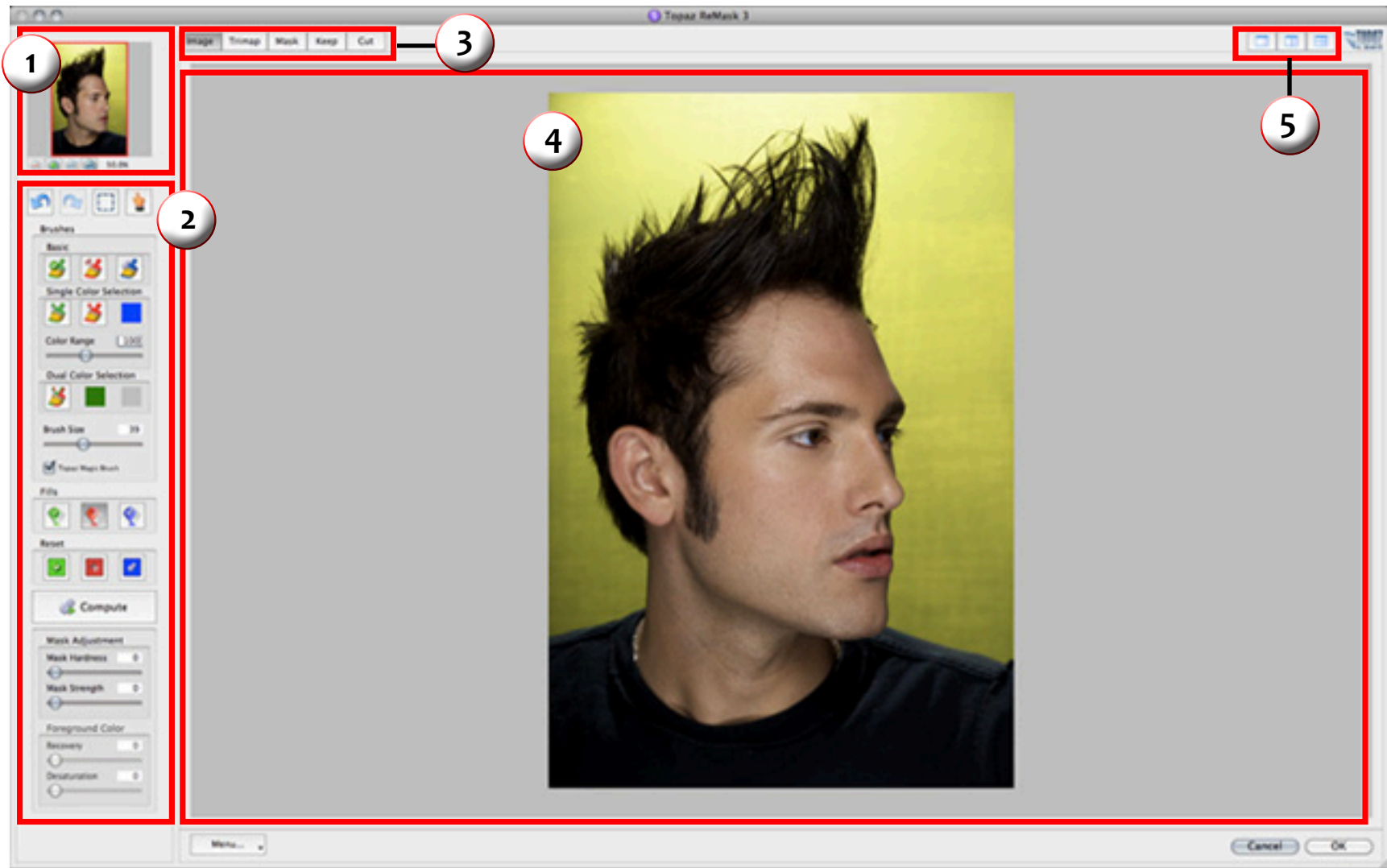
With Topaz ReMask you can:

- Easily extract objects with intricate image details
- Quickly isolate areas for selective adjustments
- Make unique compositions
- Replace backgrounds
- Creatively emphasize the subject easily and naturally
- Selectively blur only the background for a simulated bokeh effect

### New Topaz ReMask 3.0

1. **Color decontamination technology.** Helps solve color bleed issues.
2. **Better hair detection and selection technology.**
3. **Speed Boost.** Increase in processing speeds.
4. **Auto Layer Creation.** Option (enable / disable in preferences) to automatically create a new layer (in Photoshop CS3 and above only) when invoking the plug-in.
5. **New Refining Toolset.** Mask adjustment (strength and hardness sliders) and foreground color (recovery and desaturation sliders).
6. **New Brush Tools.** Single-Color Selection (with Color Range slider) and Dual-Color Selection.
7. **Split screen options.** 2-screen view or 4-screen view.
8. **Layer Mask Option (in preferences).** Let Topaz ReMask automatically create and a layer mask for non-destructive editing.





### 1. Preview Navigator

Displays the region of the preview image you are currently focused on.

### 2. Editing Parameters

Displays all of the tools that you will need to successfully create your mask.

### 3. Editing Views

Displays editing views used during the masking process.

### 4. Preview Window

Displays the preview of each editing view.

### 5. Split Screen Views

2-screen and 4-screen options used to compare each editing view during the masking process.

In this project, we will walk you through an example workflow to help you get acquainted with the basic ReMask 3 workflow.



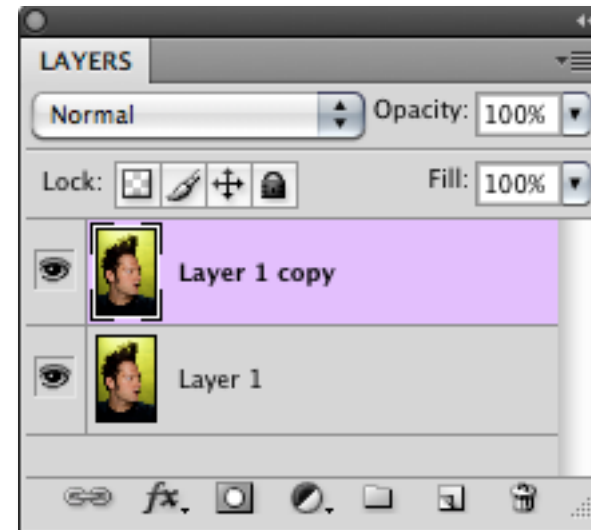
Before Topaz ReMask



After Topaz ReMask

For this example, we will be doing a simple background replacement. In the following steps, we will show you how to achieve optimal results with your own photos. So, let's get started.

1. Open an image file in Photoshop.
2. Go to Filter -> Topaz Labs and select ReMask 3



The new ReMask 3 features an auto-layer creation tool which allows users to skip the usual step of unlocking the background layer / creating a duplicate layer.

This feature can be enabled / disabled in the ReMask 3's preferences. You can access it from within the program by going to Menu -> Preferences.

When your image loads it will automatically be filled with green (keep) by default. So now we will just need to add our red (remove) and blue (compute) selections to complete the tri-map.

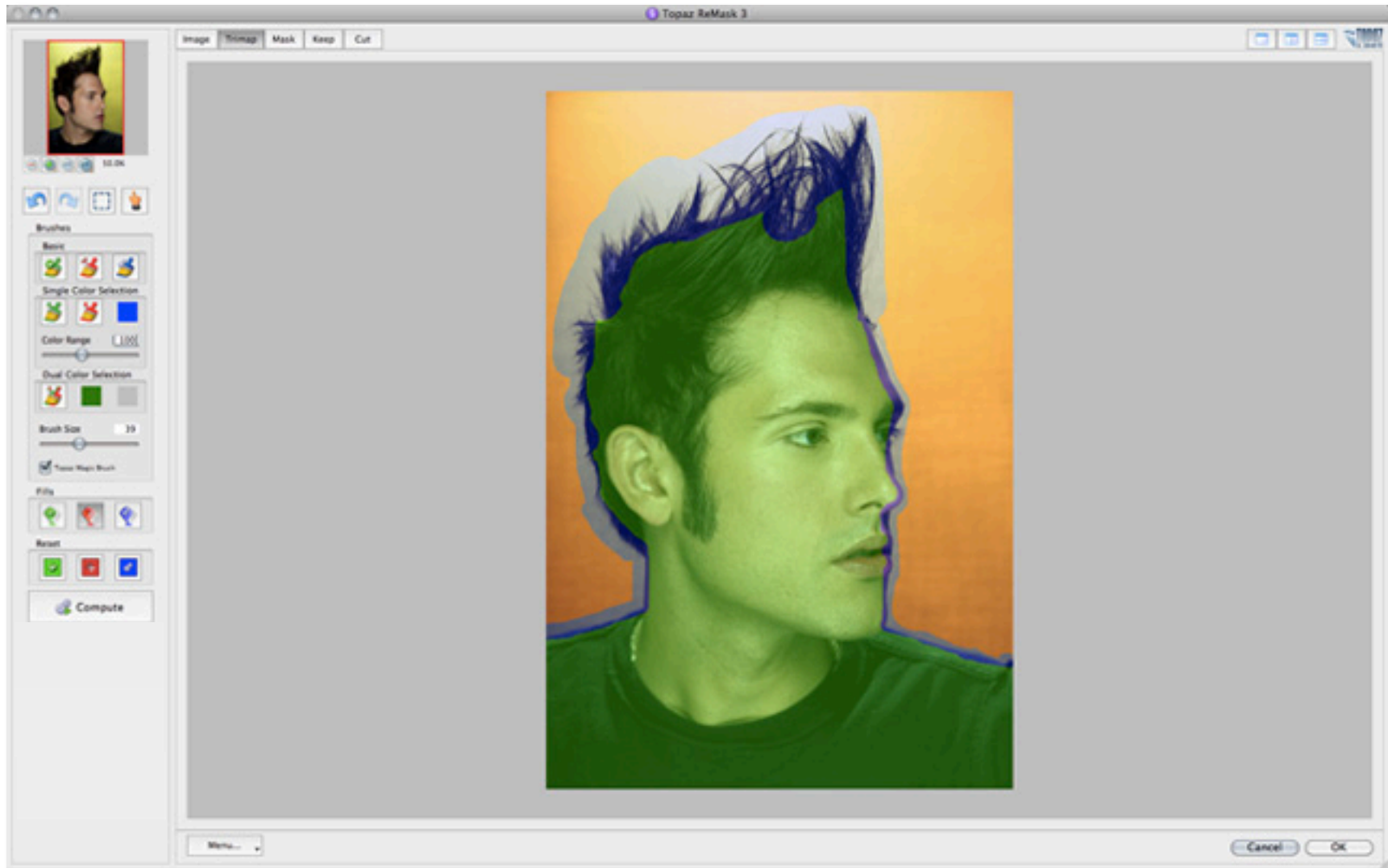
You will also notice that the additional refinement toolset is not present. The refinement toolset will only become available after you create and compute your tri-map.



3. Once your image loads, use the zoom tools to zoom in on a specific part of your image. Then you can click on the preview and drag it around until you find an area that you like to begin creating your trimap.

4. Select the Blue (basic) brush tool and set your brush size. Brush around the edges of your subject.

5. Select the Red fill tool and click outside of the blue outline to fill the background area to be removed.

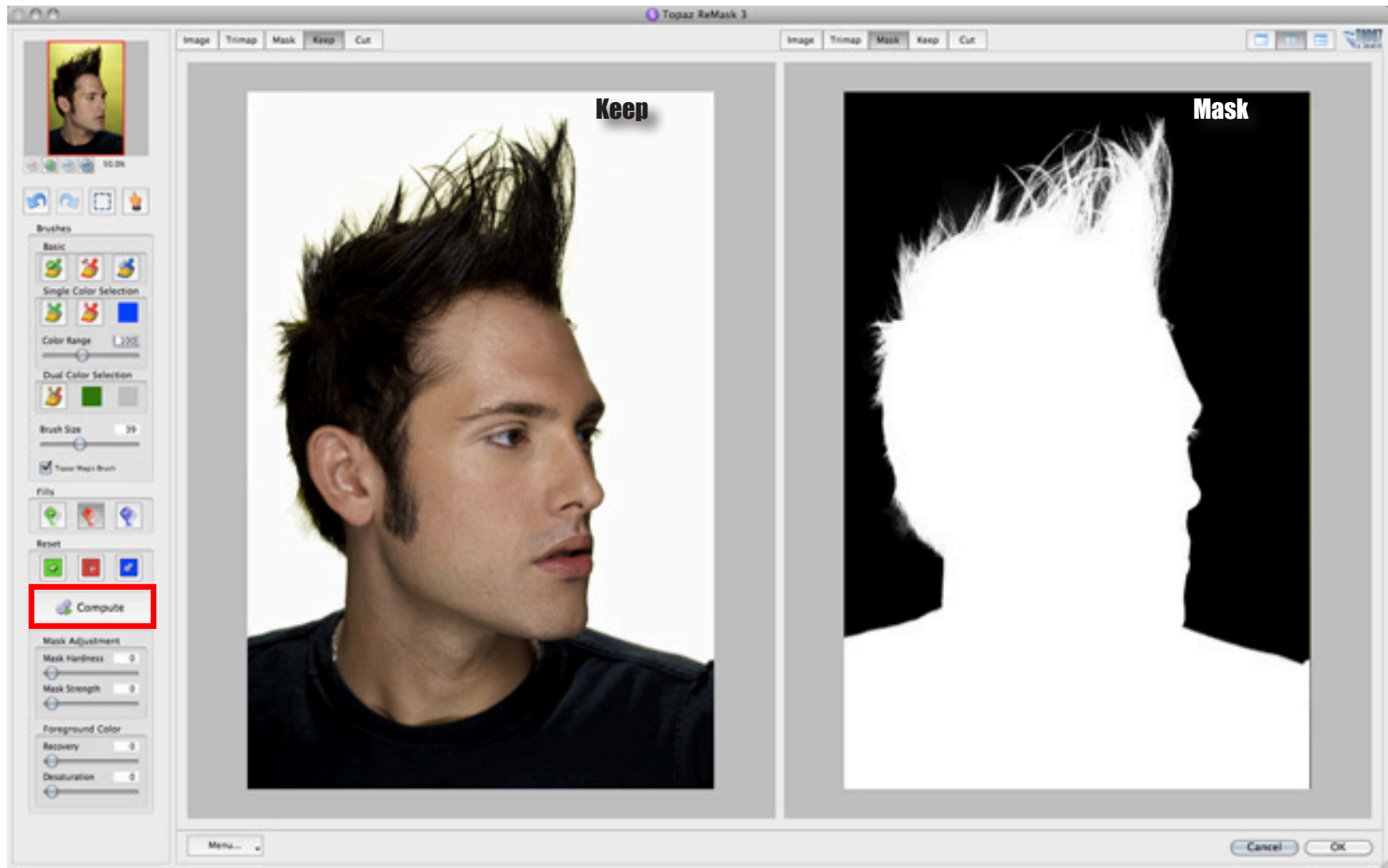


6. Click “Compute” to compute your tri-map.

Once your tri-map is computed you can use the view tabs to see your mask, keep and cut selections.

If desired, select a single or 2-screen view before beginning your refinements.

You will notice that the refining tools are now available for use.

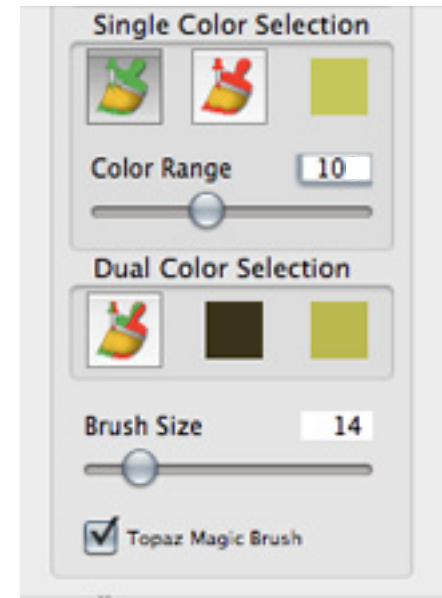


There are still some areas in between the hair strands where the removed yellow background can still be detected. The new tools in ReMask 3 make the refining process easier and more precise, and will help us clean up the yellow remnants.



Don't forget that you can use the shortcut keys in Topaz ReMask to speed up your workflow.

7. Go to the Single Color Selection tool and select the red brush icon. Once you select this, it will activate the color picker. Select the background color by clicking on it in your image.



8. Once you have your color selection, yellow in this case, you can then use the Color Range slider to determine the range of yellow that will be affected.

9. Select your brush size and then brush over the hair to remove the leftover yellow areas. Repeat this process as necessary.

To bring foreground details back into your image, you can select the green brush icon instead. Then choose the main color of your foreground and adjust the Color Range slider. Then slowly brush those details back into your image.

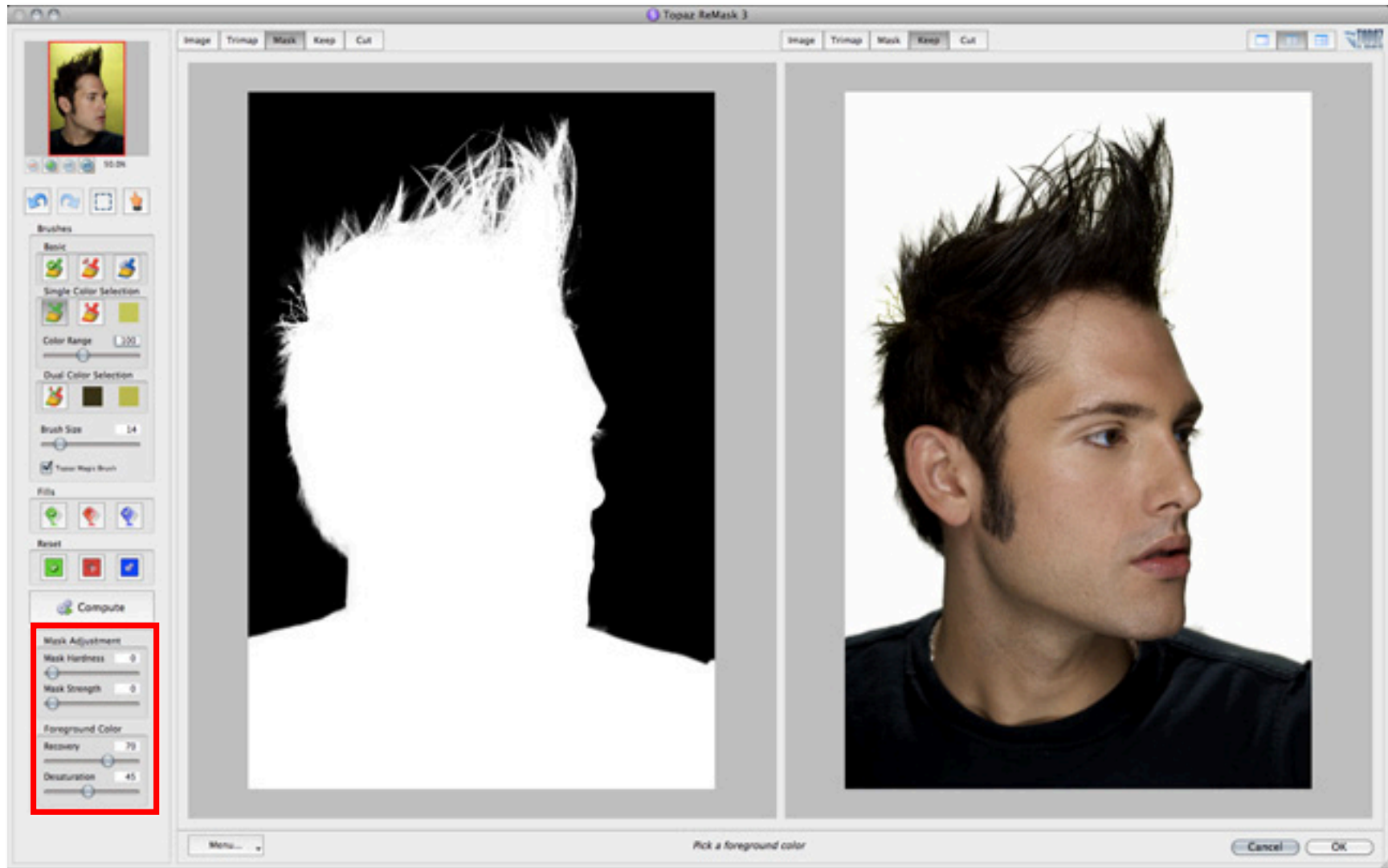


Once the leftover color has been removed we can begin refining the mask and foreground color.

10. For this image we will not adjust the sliders in the Mask Adjustment section. These sliders are best left at a low setting or completely disabled for images with hair.

11. Go to the Foreground Color section and slowly increase the Recovery slider to bring back the hair color.

12. If desired, slowly increase the desaturation slider to lower the saturation of the image edges.



13. Once you are happy with your selections, click OK to save your image back to Photoshop.

14. Add a new background into your masked image, or any other desired creative enhancements and you are all set.



Before Topaz ReMask



After Topaz ReMask

This Topaz ReMask 3 Quick Start Guide is for users who are familiar with the masking and extraction process and want to jump straight into using Topaz ReMask 3.

For a more in-depth and comprehensive break down of using Topaz ReMask 3 please view the Topaz ReMask User Guide.

The User Guide was automatically installed on your computer when you installed Topaz ReMask 3.

Here is how to access it:

MAC: HD -> Library -> Application Support -> Topaz Labs -> ReMask 3 -> Docs

WINDOWS: Computer -> C:/ -> Program Files -> Topaz Labs -> ReMask 3 -> Docs

You can also access additional written and video tutorials online at: <http://www.topazlabs.com/tutorials>





Check out our new **Forum** and our **blog** for tutorials, tips and updates from Topaz Labs!



Follow us on Twitter for notifications of recent news and easily get in touch with us whenever you feel like it!



Find us on our Facebook page and network with other Topaz users!



Participate in the entirely user-led Topaz Flickr group for a helpful and highly active community for Topaz Photoshop plug-ins!



Subscribe to our YouTube channel to keep up with any newly released product video tutorials!