



TotalExam[®] 3 User Manual



Legal

While GlobalMedia Group, LLC. (GlobalMed) and its divisions make every effort to ensure that the information contained on our website and product literature is accurate, GlobalMed takes no responsibility for incorrect, outdated, or otherwise inaccurate information. GlobalMed is not responsible for typographical errors or omissions and shall not be liable for any incidental or consequential damages caused directly or indirectly from anything on any GlobalMed website or within product literature. Our products are not meant to diagnose, cure or prevent any disease.

No license to any intellectual property rights is granted by this document, whether express or implied, by estoppel or otherwise.

One or more GlobalMed products are covered under U.S. Patent(s) with other patents pending. Any testimonials contained within any GlobalMed website or document are individual cases and do not guarantee that you will get the same results.

©2002-2018 GlobalMedia Group, LLC. (DBA GlobalMed). All Rights Reserved. iREZ, LiteExam, TotalExam, ClearProbe, CapSure, CapSure Cloud, eNcounter, EasyShare, ClearSteth, GlobalMed, TotalECG, ClinicalAccess, WallDoc, and Transforming Healthcare Globally are registered trademarks. All other trademarks are the property of their respective holders.

Warranty and Return Policy

All GlobalMedia Group, LLC (GlobalMed) products are warranted under the following terms:

Products that become defective during the first year after the order is shipped will be repaired or replaced by GlobalMed free of charge. This limited warranty is contingent upon proper use of the product and does not cover products that have been damaged (scratches, bent metal, broken components) misused, modified, or subject to unusual physical or electrical stress. All returns for any other reason must be made within the first 30 days from time of shipment and will be subject to a 25% restocking charge. Buyer must include all original components, literature, and packaging in the same salable condition received to avoid any additional charges.

All returned materials must have a GlobalMed return materials authorization (RMA) number. Authorized returns must be shipped freight prepaid to GlobalMed. GlobalMed reserves the right to refuse any return that is sent COD or without an RMA number visible on the exterior of the package. Unauthorized returns, refused shipments, and authorized returns of nondefective merchandise after the above stated return periods are subject to additional charges.

Limited Liability Agreement

No claim made by the buyer shall be for an amount greater than the purchase price of the goods in respect of which the claim was made, regardless of whether the claim pertains to damage incurred in shipping, failure to ship, or inherent defects. GlobalMedia Group will in no way be liable for incidental or consequential charges. In all events, GlobalMed reserves the option of repair or replacement at its discretion. GlobalMed takes no responsibility for incorrect, outdated, or otherwise inaccurate information, including pricing and product specifications. GlobalMed is not responsible for typographical errors or omissions and shall not be liable for any incidental or consequential damages caused directly or indirectly from any GlobalMed product. In addition, GlobalMed reserves the right to change prices, specifications or discontinue products at any time without prior notice while reserving the right to refuse or conduct a cancellation on its transaction activities due to price inconsistency from its suppliers.

©2002-2018 GlobalMedia Group, LLC All Rights Reserved.

About GlobalMed®

GlobalMed powers the largest telehealth programs in the world, facilitating more than 15 million consults to date. We have helped 4,000+ organizations improve healthcare access in 55 countries and are honored to be the telehealth provider for the White House. With a focus on security and simplicity, GlobalMed designs, builds, manufactures and deploys fully integrated, evidence-based hardware and software telehealth solutions that enable medical groups, healthcare enterprises and government entities to improve patient outcomes while lowering cost.

Founded in 2002 by a Marine Corps Reserve Veteran still serving as CEO, GlobalMed is proud to be a Veteran Owned Small Business (VOSB).

Contact info:

Help Desk: 1.800.886.3692 or visit <https://globalmed.desk.com>

GlobalMed
15020 North 74th Street
Scottsdale, AZ 85260

+1.480.922.0044 phone

+1.480.922.1090 fax

telemed@globalmed.com

www.globalmed.com

Revision History

Revision	Changes	Date
A	Initial release.	03-08-2017
B	Updated to include TotalExam 3.1 camera body information	12-08-2017
C	Updated " <i>TotalExam 3.1 Camera Wand:</i> " on page 13	01-22-2018

Table of Contents

Chapter 1 About TotalExam® 3

About TotalExam 3	1
What's Included	2
Precautions	2
Warnings	4
Specifications	4
Features	6

Chapter 2 Using the TotalExam 3

Overview	7
Installing TotalExam 3	7
TotalExam 3 Controls	8
Freeze-Frame Control (FF Button)	8
White Balance Button (WB Button)	9
LED Light Control (LED Button)	10
TotalExam 3 Heads and Accessories	10
TotalExam 3.0 Camera Wand	11
TotalExam 3.1 Camera Wand:	13
Otoscope Head	16
Variable Polarizing Hood	17
Derm Hood and Touch Collar	18
Tongue Depressor Adapter	18
Specula	19
Cleaning Procedures	20

About TotalExam[®] 3

1.1 About TotalExam 3

The GlobalMed[®] TotalExam[®] 3 camera is a hand-held examination video camera with multiple functions. The camera has interchangeable heads, including an autofocus head and otoscope head. The TotalExam 3 allows viewing high definition freeze frame images and live images. Light settings allow for varying levels and intensities of natural white lighting. Buttons on the unit provide the ability to perform freeze frame, light control, and white balance.

USB 3.0 connectivity allows the TotalExam 3 to be easily used with laptops, tablets, as well as exam stations.

The TotalExam 3 is intended for indoor use only.

Prior to use of the equipment, the operator must possess fundamental understanding of the operational processes outlined in this manual. Following the instructions provided in this manual will enable the operator to safely utilize the camera.

The TotalExam 3 is not intended to be serviced or maintained while in use. Any repair or replacement of components will be performed by GlobalMed personnel and are not to be replaced by service personnel.

1.2 What's Included

Items in the TotalExam 3 camera kit may be ordered separately. However, a complete kit includes the following:

- TotalExam 3 camera
- Autofocus head
- Otoscope head
- Variable Polarizing Hood (VPH)
- Derm hood
- Tongue depressor adapter
- Tongue depressors (5)
- Touch collars (5)
- 4.25 mm Specula (x5)




1.3 Precautions

Please thoroughly review these safety instructions before operating the equipment. Clinical and technical personnel should adhere to warnings and precautions at all times. Equipment, should be used according to operating instructions outlined throughout this manual. Only use manufacturer recommended or approved accessories to ensure compatibility.

Table 1 TotalExam® 3 precautions

Precaution Type	Description
Liquid and Moisture	<ul style="list-style-type: none"> • Avoid direct contact with liquids on all electrical components and devices on the telemedicine station • Do not store or operate equipment in areas with excessive moisture
Electrical	<ul style="list-style-type: none"> • Warning: To avoid the risk of electric shock, this equipment must only be connected to a supply mains with protective earth • Do not use if cable is damaged
Certifications	The TotalExam 3.0 Camera complies with U.S. FCC and EMI requirements according to FCC Part 15, ICES-001, and ICES-003

Table 2 TotalExam® 3 safety symbols

Symbol	Description
	Type BF Applied Part (IEC 60417-5333)
	Direct Current (IEC 60417 - 5031)
	ON / OFF (IEC 60417 - 5010)

Warning: Ensure that all USB connections are oriented correctly when plugging in USB devices. An incorrect USB connection (plugged in upside down) could result in deactivation of integral CAS components, requiring a complete system restart to remediate.

Reciprocal interface: The TotalExam 3.0 complies with U.S. FCC and EMI requirements according to FCC Part 15, ICES-001, and ICES-003.

Responsible Organization: The TotalExam 3.0 complies with U.S. (UL) and Canadian (CSA) safety standards such as, UL 61010-1 and CSA 61010-1.

1.4 Warnings

Warning: This camera is an electrical device; do not attempt to submerge into any kind of liquid. Doing so could result in electrical shock or other hazardous results.

The TotalExam 3.0 has been tested and found to comply with the limits for a Class B digital device, pursuant to part 15 of the FCC Rules. These limits are designed to provide reasonable protection against harmful interference when the equipment is operated in a commercial environment. This equipment generates, uses, and can radiate radio frequency energy and, if not installed and used in accordance with the instruction manual, may cause harmful interference to radio communications.

Any dismantling of the camera will void the warranty and could damage the device or cause electrical shock. If it is necessary to clean the camera refer to the cleaning procedures sections for instructions on how to maintain cleanliness and thereby prevent contamination. This device alone is not intended to be used to diagnose, treat, cure or prevent any disease and should not be used as substitute for a health professional's advice.

GlobalMed does not accept any liability for injury, loss or damage by use of or reliance on the information gathered by our product.

1.5 Specifications

Table 3 TotalExam® 3 Camera

Component	3.0 Specifications	3.1 Specifications
Dimensions	Camera Body: 155mm x 33mm Autofocus Head: 38mm x 33mm Otoscope Head: 60mm x 33mm	Camera Body: 214mm x 33mm Autofocus Head: 38mm x 33mm Otoscope Head: 60mm x 33mm
Weight of Camera Body	~8 ozs	~10 ozs
Focus Type	Autofocus	Autofocus
Snapshot Size	1 Megapixel	1 Megapixel
Captured Video Resolution	1280 x 720p	1280 x 720p
Captured Frame Rate	Up to 60 Frames Per Second	Up to 60 Frames Per Second

Table 3 TotalExam® 3 Camera (Continued)

Component	3.0 Specifications	3.1 Specifications
Output	USB 3.0	USB 3.0
Integrated Freeze Frame	Push-button (selects the clearest frame of the last 16 frames)	Push-button (selects the clearest frame of the last 16 frames)
White Balance	Push-button	Push-button
Lighting	Autofocus Head 8 LEDs Otoscope Head 2 LEDs, 5100K	Autofocus Head: 8 LEDs Otoscope Head: 2 LEDs
Operating Temperature	0° – 42° C (32°-107°F)	0° – 42° C (32°-107°F)
Operating Humidity	Less than 90%	Less than 90%
Power Usage	Less than 4W	Less than 4W
Voltage Usage	~ 0.800 mA @5 VDC using USB 3.0 only	~ 0.800 mA @5 VDC using USB 3.0 only
Aspect Ratio	16:9	16:9
Lens (Aperture)	f:3.0 M12 650nm IR filter f:18.0 FOV: r= 10mm DOF: 12mm – 14mm	f:3.0 M12 650nm IR filter f:18.0 FOV: r= 10mm DOF: 12mm – 14mm

1.6 Features

- HD video stream over USB 3.0 output
- Up to 60 fps on USB 3.0, up to 15 fps on USB 2.0
- 720p image resolution and clarity
- Powered by USB 3.0 ports (No external power supply needed)
- Integrated Freeze-Frame (FF Button)
- White Balance (WB Button)
- LED Control (Multiple levels of intensity, depending on head)
- Pivoting Head (3-Position 0°, 37.5°, 75°)

Using the TotalExam 3

2.1 Overview

This chapter provides information on the use of TotalExam 3.0 and 3.1 cameras; where differences apply between the two, they are specified.

2.2 Installing TotalExam 3

1. Plug the TotalExam 3 cable into any Windows[®] based computer that has an USB 3.0 high-speed connector.
2. There are no drivers or software to install or download.
3. The TotalExam 3 does not require the use of a power supply external from the device that contains the USB 3.0 connection.
4. The TotalExam 3 camera does require that a video conferencing application, such as eNcounter[®], be open on a computer when plugging in the camera for the camera to power on.

2.3 TotalExam 3 Controls

Figure 1 TotalExam® 3 controls



2.3.1 Freeze-Frame Control (FF Button)

Use the FF button (see [Figure 1](#)) to freeze live video and conduct closer examination of an image. Freeze-Frame image optimization is aided by counting back eight frames and forward eight frames for analysis that automatically selects the clearest image among the sixteen buffered-frames.

1. To freeze the live video, press the FF button and release.
2. The image is frozen upon release of the button.
3. The still image remains on the screen until you press the FF button again to release the frozen image.

Note: Unplugging the camera from the computer while still in Freeze-Frame mode causes the camera to lose power and the frozen image to be lost.

2.3.2 White Balance Button (WB Button)

Use the WB button to adjust the way light affects the image and adjusts for poor contrast and color. There are two distinct white balancing methods to use. The correct white balancing method depends on if you are capturing the image from a distance of over 1 meter (Perspective Image) or within 1 meter (Micro Image) when using the autofocus head.

Tip: Select the LED light level prior to selecting the WB option.

2.3.2.1 Perspective Image

For images taken greater than 1 meter from the area of interest:

1. Hold a white sheet of paper in front of the subject and aim the camera at the paper.
2. Press the WB button once the view is filled with as much of the paper as possible.

Note: If the area of interest is moved from the position where the initial white balancing took place, you may need to repeat the white balancing procedure.

2.3.2.2 Micro Image

For images that are taken less than 1 meter from the area of interest:

1. Hold a white sheet of paper about 100 mm (4 inches) away from the front of the camera and press the WB button.
2. If using the derm hood and touch collar during the white balance procedure, hold it close enough so that the entire camera's field-of-view is filled with the paper and press the WB button.

Tip: If using the otoscope head, set the light to one of the two settings and point at a white sheet of paper with the otoscope head about 1 cm away.

2.3.3 LED Light Control (LED Button)

The camera contains a light carousel for illuminating the viewing area. There are multiple levels of LED light intensity that can be accessed and controlled via the LED button.

1. Press the LED button to turn on the TotalExam 3 LED ring. The light intensity level is at the lowest setting.
2. Press of the button again to increase the light intensity until it reaches the highest level.
3. Press the button after the highest intensity level is reached to shut off the LED ring.

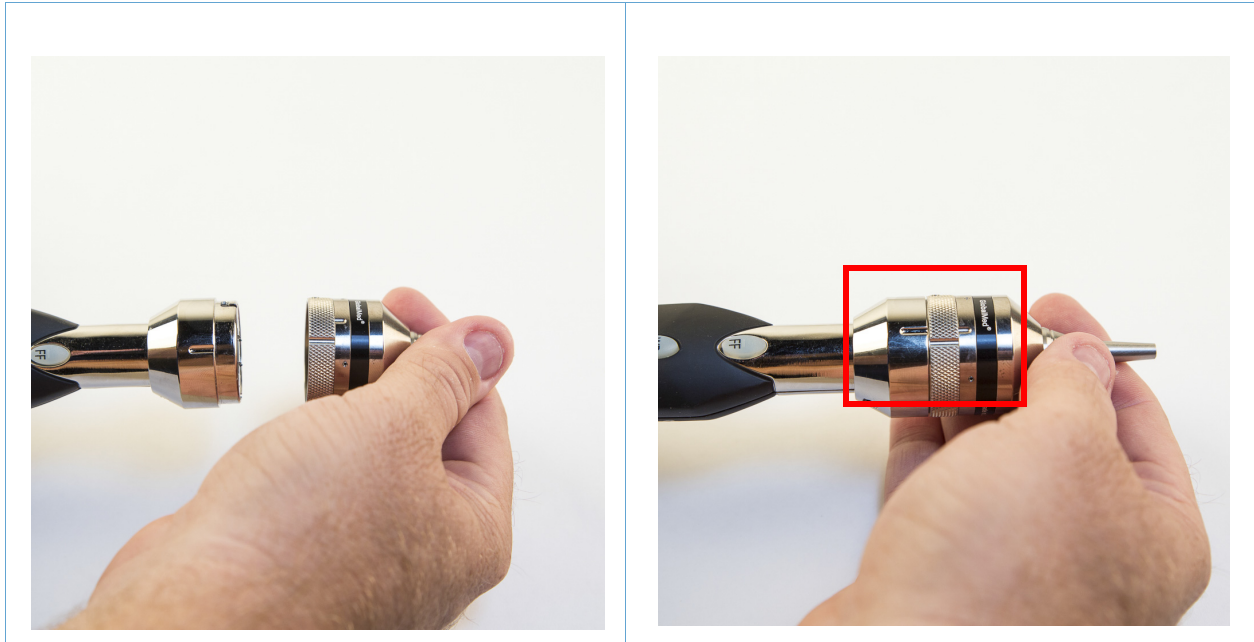
2.4 TotalExam 3 Heads and Accessories

You can change the TotalExam 3 camera heads and attachments as needed based on the type of consultation being conducted. Follow these instructions to change heads on the TotalExam 3.

2.4.1 TotalExam 3.0 Camera Wand

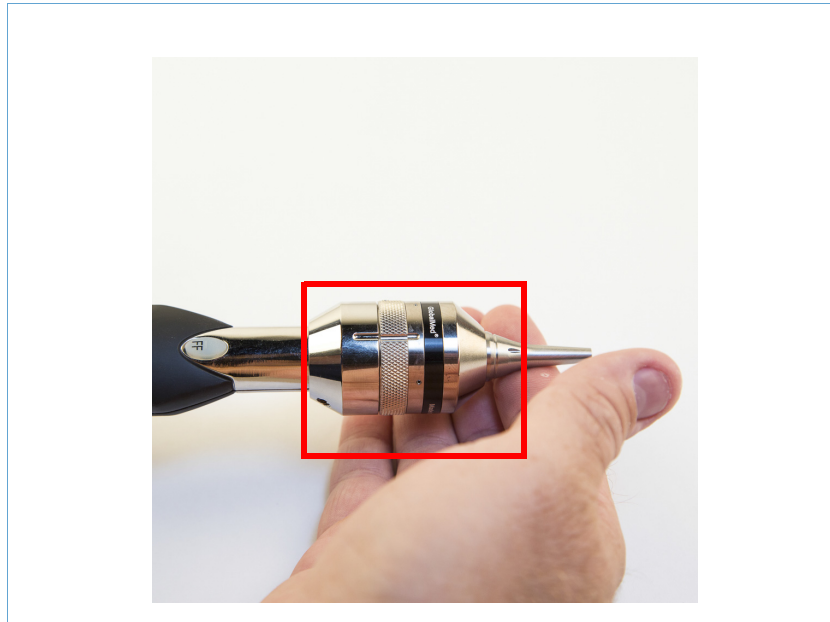
1. To put a head on, gently place the head on the camera wand, lining up the ports on each end of the camera wand and head. The alignment markers are unaligned (see [Figure 2](#)).

Figure 2 Placing the head on the TotalExam[®] 3.0 camera wand



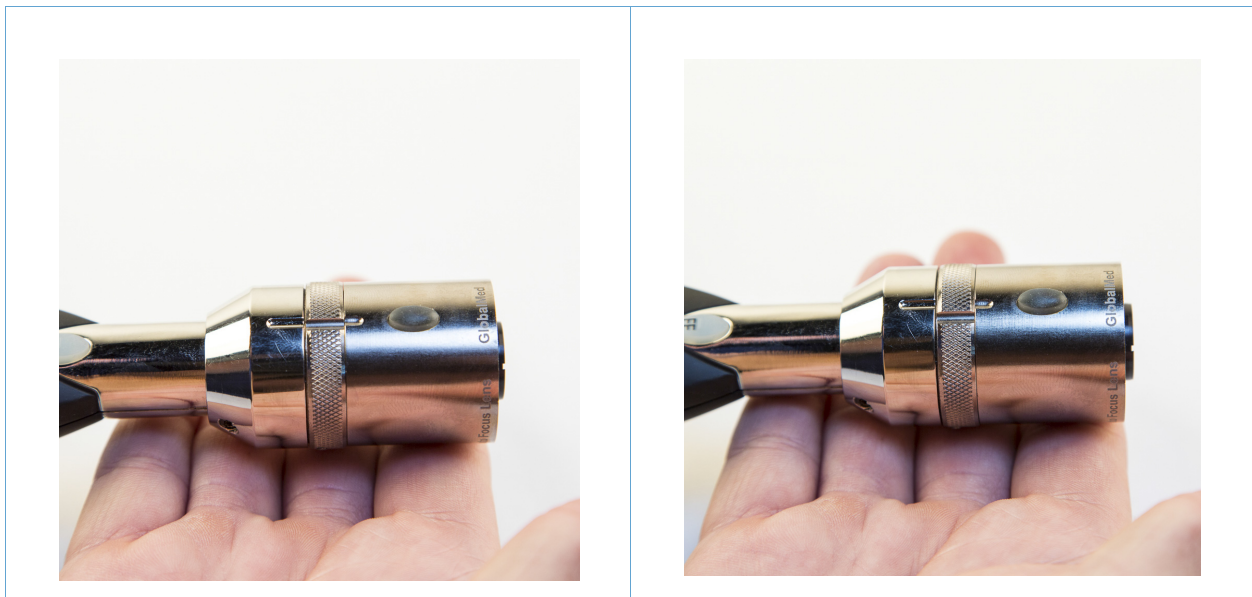
2. To lock the head on the wand, turn the middle ring clockwise until all three alignment markers are aligned.

Figure 3 Lock the middle ring



3. To take the head off the TotalExam 3.0 camera wand:
 - a. Rotate the middle ring counterclockwise until the alignment markers are unaligned (see *Figure 4*).

Figure 4 Rotate the middle ring to unalign the markers



- b. Gently pull the head away from the camera wand.

Figure 5 Gently remove the head

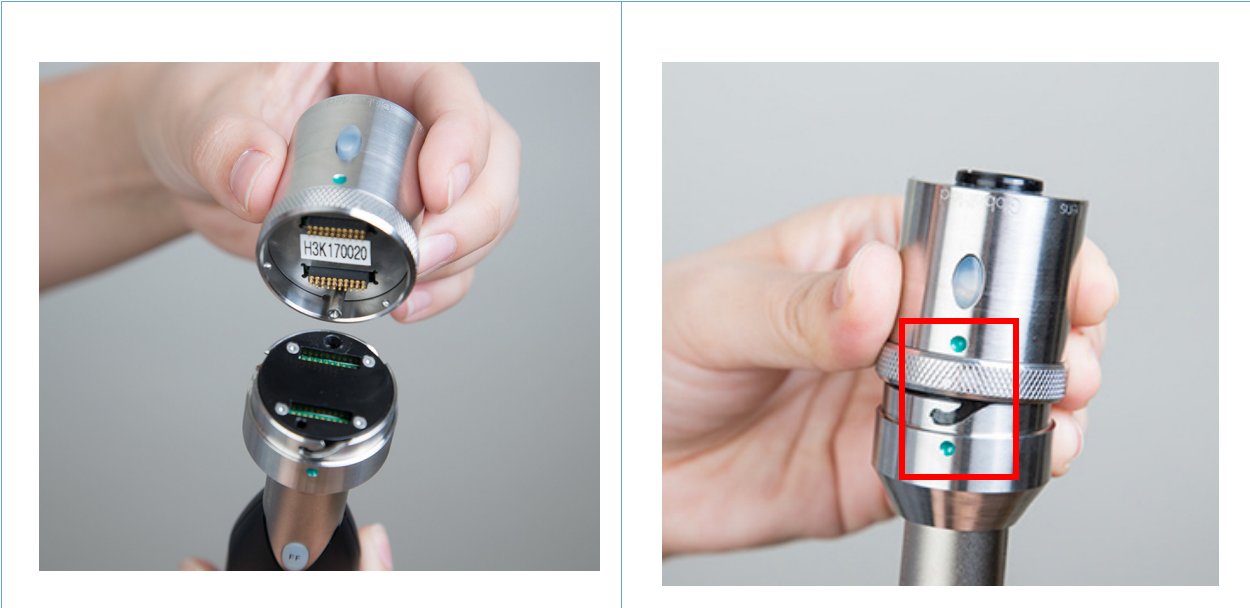


2.4.2 TotalExam 3.1 Camera Wand:

1. To put a head on, line up the pin in the head with the hole in the camera wand. Gently begin placing the head on the wand (see *Figure 2*).

Tip: The green alignment dot on the locking ring will be over the curved slot on the head.

Figure 6 Placing the head on the TotalExam® 3.1 camera wand



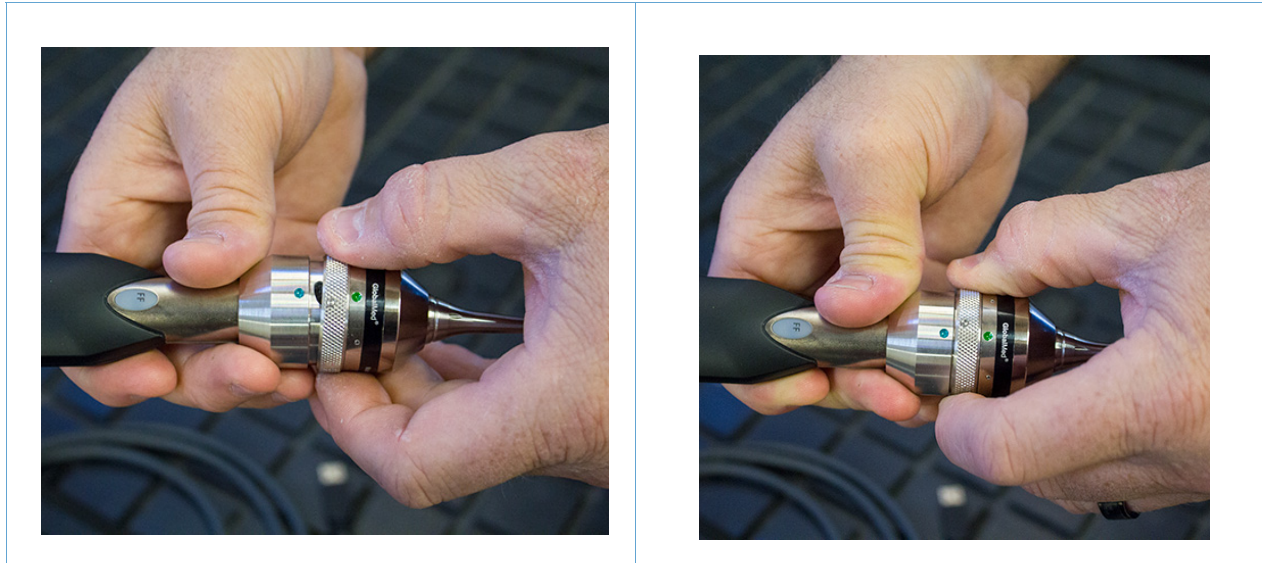
- 2. To lock the head on the wand, twist the locking ring clockwise so that the two green alignment dots are aligned and the locking ring is firmly secured.

Figure 7 Rotate the locking ring clockwise



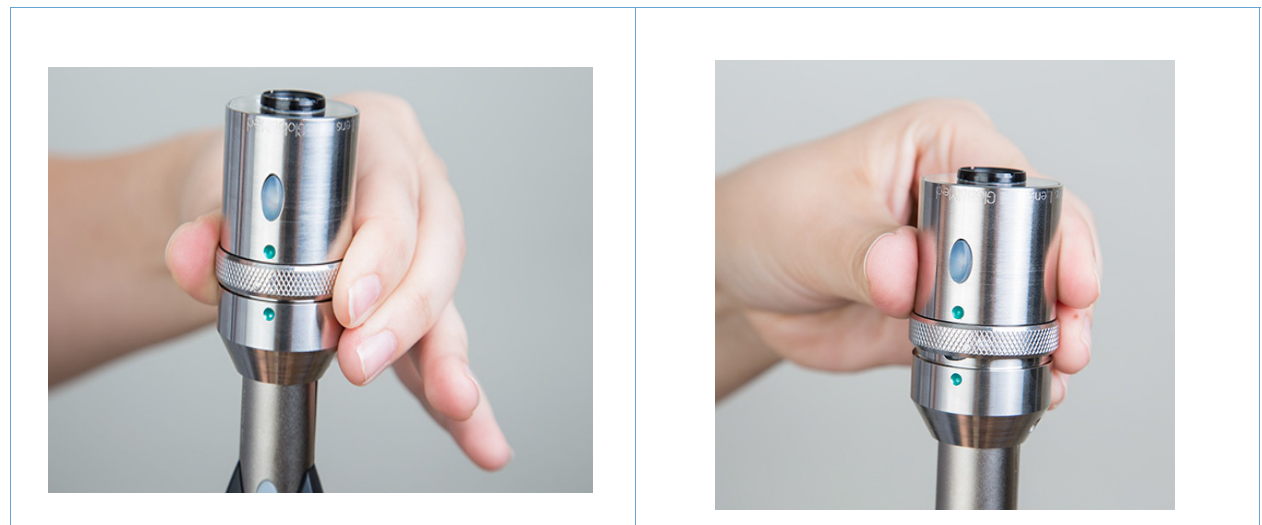
Note: The otoscope head for the TotalExam 3.1 has two green alignment dots (see [Figure 8](#)).

Figure 8 The otoscope head has two green alignment dots



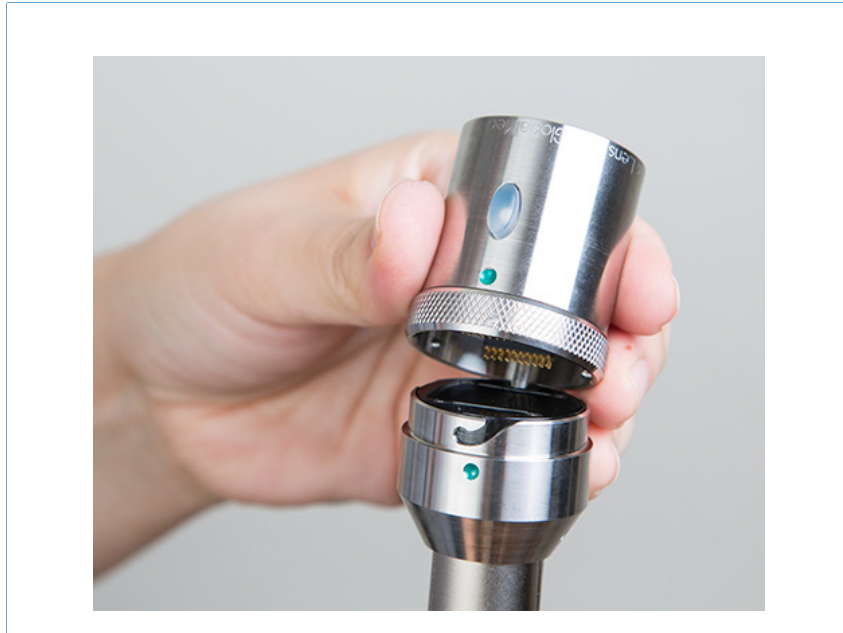
3. To take the head off the TotalExam 3.1 camera wand:
 - a. Rotate the locking ring counterclockwise until the otoscope head is loosened from the wand (see [Figure 4](#)).

Figure 9 Rotate the locking ring counterclockwise



- b. Gently pull the head away from the camera wand.

Figure 10 Gently remove the head



2.4.3 Otoscope Head

Use the otoscope head to examine the pinna, external auditory canal, tympanic membrane, and middle ear in HD. The otoscope head works best at a distance of 12-14mm from the ear drum and uses a fixed focus design (see [Figure 11](#)).

Figure 11 Otoscope head, TotalExam 3.0 (left), and TotalExam 3.1 (right)



2.4.4 Variable Polarizing Hood

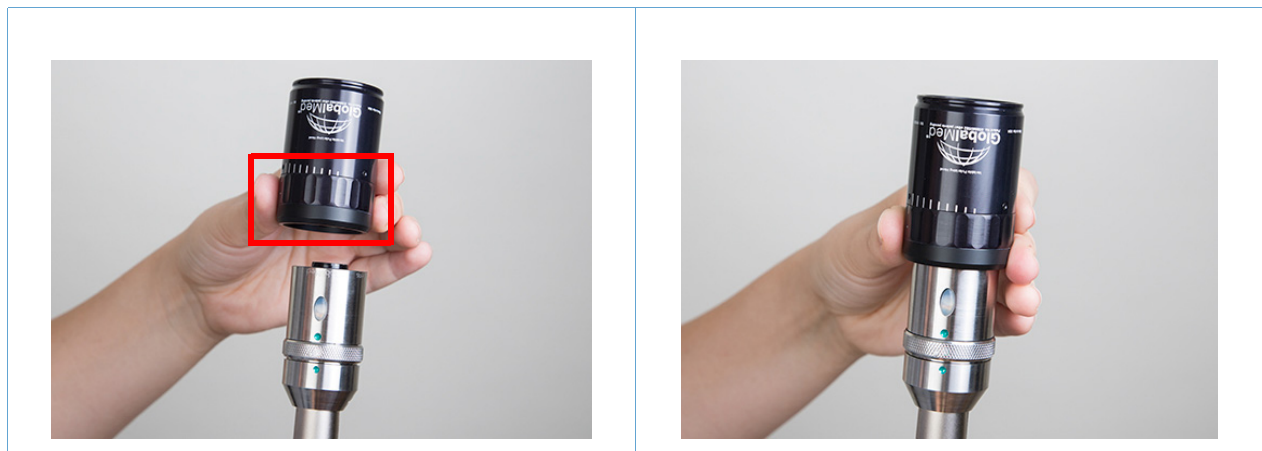
The Variable Polarizing Hood (VPH), purchased separately, is an instrument that eliminates unwanted glare from surfaces that are being examined (see [Figure 12](#)). It attaches to the end of the TotalExam 3 autofocus head and allows the user to control the amount of light reflecting off the area of interest.

Figure 12 Variable Polarizing Hood



To attach the Variable Polarizing Hood, place the hood with the polarizing ring end on the autofocus head (see [Figure 13](#)). A touch collar can be placed on the other end to act as a barrier between the camera and patient.

Figure 13 Place the Variable Polarizing Hood on the autofocus head

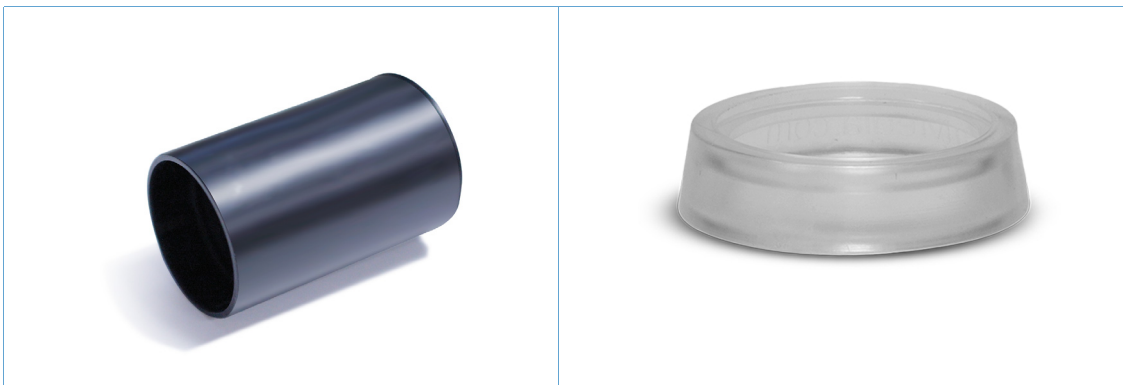


2.4.5 Derm Hood and Touch Collar

The derm hood is designed to fit onto the autofocus head and is utilized for up close examinations (see [Figure 14](#)). The purpose of the derm hood is to focus the light from the camera's LEDs down onto the surface area being examined.

The derm hood is used in conjunction with the touch collar for up close examinations of the skin's surface. The touch collar acts as a barrier to protect the derm hood and camera from becoming contaminated by contact with mucous membranes or broken skin. The touch collar should be disposed of as medical/biohazard waste after use.

Figure 14 Derm hood and touch collar



2.4.6 Tongue Depressor Adapter

The tongue depressor adapter clips on to the TotalExam 3 at the narrow neck of the camera when using the autofocus head (see [Figure 15](#)). To use the tongue depressor adapter, the head of the TotalExam 3 must be in the upright position, not pivoted. The adapter holds a standard tongue depressor blade for examinations of the throat, mouth, or for stabilization during up-close examinations.

Figure 15 Tongue depressor adapter



2.4.7 Specula

The TotalExam 3 Otoscope Head is compatible with the single use, disposable Welch Allyn Specula (Adult). After each use, the specula should be disposed of as medical/biohazard waste.

Figure 16 Welch Allyn specula



2.5 Cleaning Procedures

The TotalExam 3 Camera is an FDA registered Class I non-sterile medical device. The camera is used in conjunction with three accessories: the tongue depressor adapter, derm hood and the disposable touch collar. The Welch-Allyn specula is used in conjunction with the otoscope head.

The derm hood and the tongue depressor adapter are not intended to be patient contact components and as such are designed to be cleaned and reused multiple times. The touch collars, tongue depressors, and specula are intended for patient contact and are a single use components.

Table 4 Cleaning procedures for the TotalExam® 3 kits

Component	Procedure	Frequency
TotalExam 3 Camera and Cord	Gently wipe all parts of the outer surfaces of the equipment and cord with a disinfecting wipe and/or soft cloth moistened with a facility or CDC approved cleaning solution.	At least weekly or when contaminated.
TotalExam 3 Otoscope Head	Gently wipe down with cotton swabs and Isopropyl alcohol (90% or higher).	Clean after every exam of the ear or nose.
TotalExam 3 Camera Body ONLY	Use a lens cloth or soft cotton swab with a CDC approved lens cleaning solution.	Clean at least weekly or when contaminated.
TotalExam 3 derm hood and Tongue Depressor Adapter	Derm hood and the Tongue Depressor Adapter can be gently wiped down or soaked in a facility or CDC approved cleaning solution.	After each use.
Variable Polarizing Hood	Gently wipe down with alcohol pads (90% or higher).	After each use.
TotalExam 3 touch collars and Specula	N/A	Dispose after each use.
Tongue depressors	N/A	Dispose after each use.