



T TERRA
ESMERALDA
TOWNHOMES

 BELLAVISTA
HOMES

ARB | DEVELOPMENT

AHG
Alamo Homes Group

Town Homes Starting in the Low 200's



- Luxurious, contemporary and affordable townhomes in West Kissimmee, Florida
 - 50 townhomes with 3&4 bedrooms/2.5&3.5baths
 - Five floor plans to choose from
 - Peaceful surroundings with a conservation area
 - Near Main highways, high-rated schools, Supermarkets, public transportation and theme parks
 - Fantastic amenities, including community pool and Jacuzzi with cabana, playground, multi-purpose grass court,
 - Fitness trail and lake
 - Gated community
 - Affordable bank financing available
- Trusted team of builders with more than 30 years of Experience

FIRST UNITS TO BE DELIVERED JUNE 2018

Standard Features



EXTERIORS

- 30-year dimensional shingle roof
- 2 exterior hose bibs (per plan)
- Concrete block, steel, and wood construction
- Textured Portland cement-based exterior walls
- Maintenance-free ventilated aluminum soffit & fascia
- Structurally engineered roof & floor truss system
- Underground utilities
- Landscape package
- Automatic irrigation system
- 100% acrylic exterior paint system



INTERIORS

- 8-foot tall, 6-panel embossed entry door
- 18x18 ceramic tile floor at first level, wet areas
- Double-glazed tinted series single hung windows 8-foot tall sliding glass doors
- Textured ceilings and wall finish
- Contemporary style interior trim
- A/V outlet in living room and in each sleep room Full security system (excludes monitoring)
- Smoke detectors & electronic door chime
- Ceiling fan pre-wire in bed and living rooms
- Carpet and upgraded re-bond pad throughout 2nd level
- Washer & dryer connections
- Walk-in master closet



KITCHEN

- Granite countertops
- Stainless steel double bowl sink
- 30" wood upper cabinets
- 18x18 ceramic tile floor
- Free standing electric glass top range
- Over the range microwave oven
- Built-in dishwasher
- Garbage disposal



BATHROOM

- 18x18 ceramic tile
- Wood cabinets (per plan)
- Chrome faucets
- Elongated toilets
- Mirror over all vanities
- Dual sinks with laminate vanity tops (per plan)
- Large walk-in master shower with glass door
- Tub/shower combination in secondary bathrooms



OTHER

- Lead walk and entryway
- 14 SEER energy efficient electric heat pump
- Termite protection
- Home Buyers Warranty (2 years for major systems and 10 for structural elements) One-year builder-backed warranty
- Quick recovery hot water heater
- Attic insulation and venting
- R-30 ceiling & R-11 exterior frame walls insulation
- Passive heat release roof ventilation system
- Water saver toilets

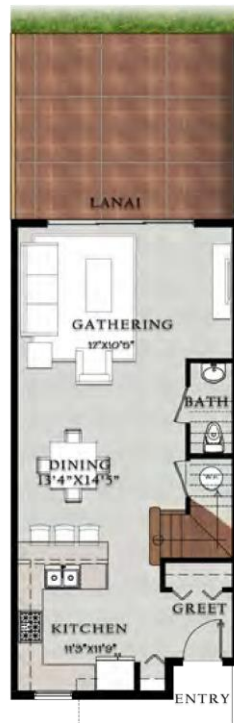


Sorrento

- 3 bed, 2.5 bath
- 1,352 total sq. ft.
- Interior unit
- Patio



SECOND LEVEL



FIRST LEVEL

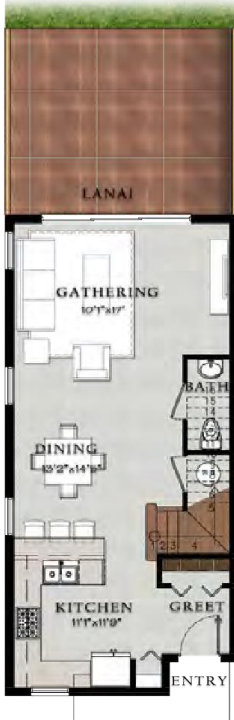


Amalfi

- 3 bed, 2.5 bath
- 1,379 total sq. ft.
- Corner unit
- Patio



SECOND LEVEL



FIRST LEVEL



Capri

- 3 bed, 2.5 bath
- 1,591 total sq. ft.
- Interior unit
- Patio



SECOND LEVEL



FIRST LEVEL



Tramonti

- 3 bed, 2.5 bath
- 1,591 total sq. ft.
- Interior unit
- Patio





Salerno

- 4 bed, 3.5 bath
- 1,721 total sq. ft.
- Corner unit
- Patio



SECOND LEVEL



FIRST LEVEL

Site Plan



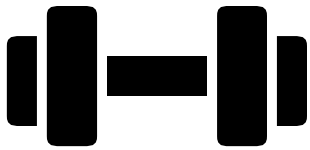
Community Amenities



POOL WITH
CABANA &
JACUZZI



Community Amenities

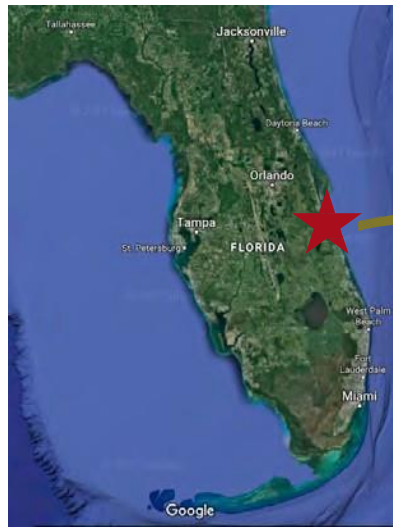


INCLUDED



Location Map

- Next to Mater Academy Charter School
- Near US 192, World Disney World and all other Orlando attractions
- A few miles to SunRail Train Station, Kissimmee



Contact Us



Call our office for information and sales at:

Alamo Homes Group: 407-447-7724 Ext. 101

Email: terra@alamohomesgroup.com

ARB Development: 407-420-0911

Email: terraesmeraldamco@gmail.com

Office Address:

13574 Village Park Dr. Suite 125, Orlando Fl 32837



Bellavista Homes Plans and elevations are artist's renderings and may contain options which are not standard and may not be available in all models, model types or homes. Developer reserves the right to modify plans, specifications, materials and prices. Features listed above may change without notice or prior obligations. Dimensions may vary from those shown and are subject to change without prior notification. Bellavista Building Group LLC lic # CBC060446