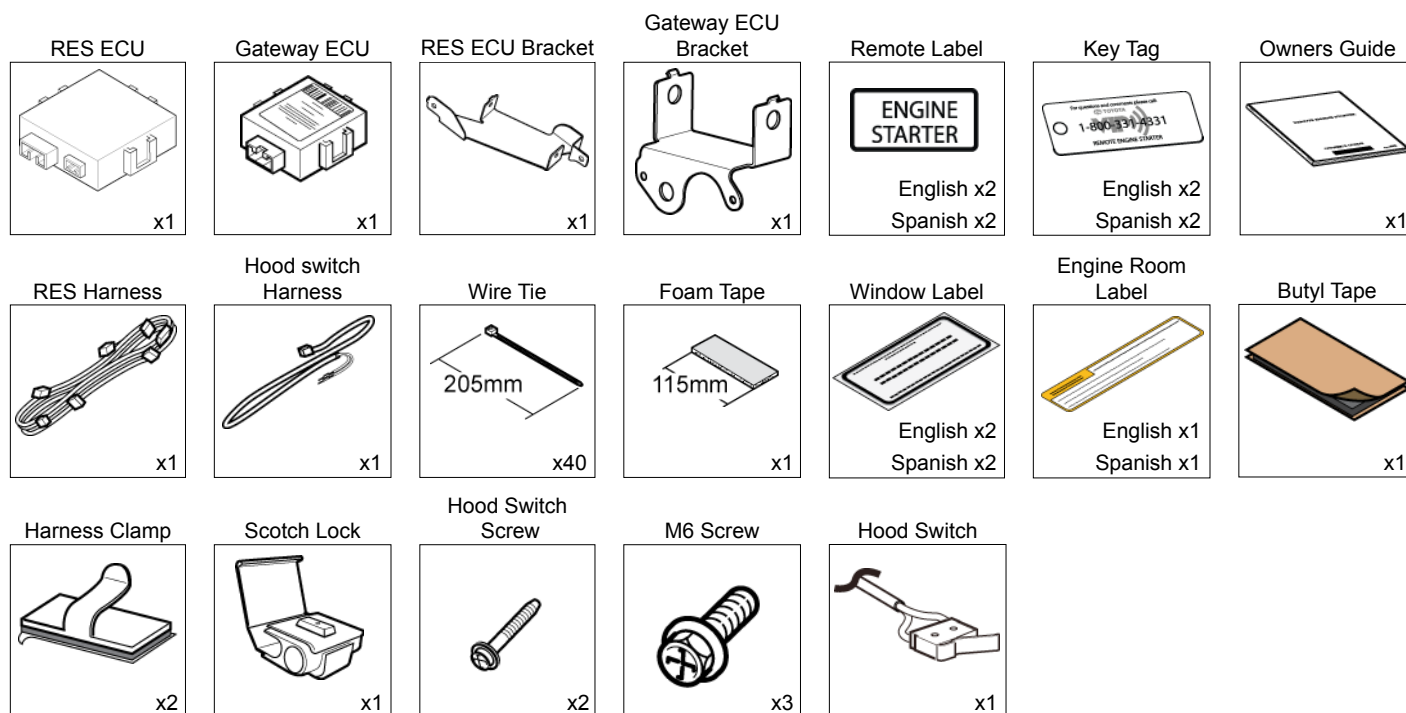


Part #: PT398-02080 or PT398-02100

NOTE: Part number of this accessory may not be the same as the part number shown.

Conflicts:

Do not install into Manual Transmission Vehicles or Vehicles without RKE systems.



Additional Items

(may be required)

Item#	Description

Recommended Sequence of Application

Item#	Description
1	TVIP V5 System
2	TVIP V4 System

Recommended Tools

Personal & Vehicle Protection	Description
Safety Glasses	
Safety Gloves	(Optional)
Vehicle Protection	Blankets, Parts Boxes
Special Tools	
Cable Wire Routing Tool	
Installation Tools	
Screwdriver	#2 Phillips, Phillips Jewelers, Flat Blade Jewelers
Nylon Panel Removal Tool	e.g. Panel Pry Tool #1 Toyota SST# 00002-06001-01
Side Cutters	
Torque Wrench	36 in•lbf (4.07 N•m); 66.4 in•lbf (7.5 N•m); 70.8 in•lbf (8.0 N•m)
Utility Knife	
Tape	Clear, Electrical
Socket	10mm, extension
Pliers	Needle Nose, Pliers
Special Chemicals	
Cleaner	
Glass Cleaner	

Table of Contents

I. Preparation	1–3
1. Table of Contents	2
2. Wire Routing Overview	3–4
II. Procedure	5–37
1. Disassembly (Engine Compartment)	6
2. Hood Switch Installation	6
3. Disassembly (Passengers Area)	11
4. V4 Wire Harness Installation (Driver's Side)	16
5. V4 Wire Harness Installation (IP Panel)	20
6. V4 Wire Harness Installation (Steering Column)	21
7. V4 Wire Harness Installation (Passengers Side)	22
8. Hood Switch Harness Routing (Continued)	23
9. RES ECU and Gateway ECU Preparation	26
10. V4 Harness Installation (Glovebox Area)	26
11. Hood Switch Pin	27
12. V4 Harness Installation (Continued)	29
13. Registration Preparation	32
14. Phase 3 Registration	34
15. Phase 4 Registration	38
16. Tags and Labels	42
17. Completing the Installation	43
III. Checklist	44–46
1. Accessory Function Checks	44
2. Vehicle Function Checks	45

Legend



Do not proceed until process has been completed.



Follow steps carefully to avoid damaging the Vehicle or Accessory



Use caution to avoid injury.



Used in Figures to call attention to specific tools recommended for the process.



Highlights a change in installation with respect to previous issue.



Indicates that torque is related to safety.



Video available; click to play.

Accessory Installation Practice (read before installation)

Care must be taken when installing this accessory to ensure damage does not occur to the vehicle. The installation of this accessory should follow approved guidelines to ensure a quality installation.

These guidelines can be found in the “Accessory Installation Practices” document.

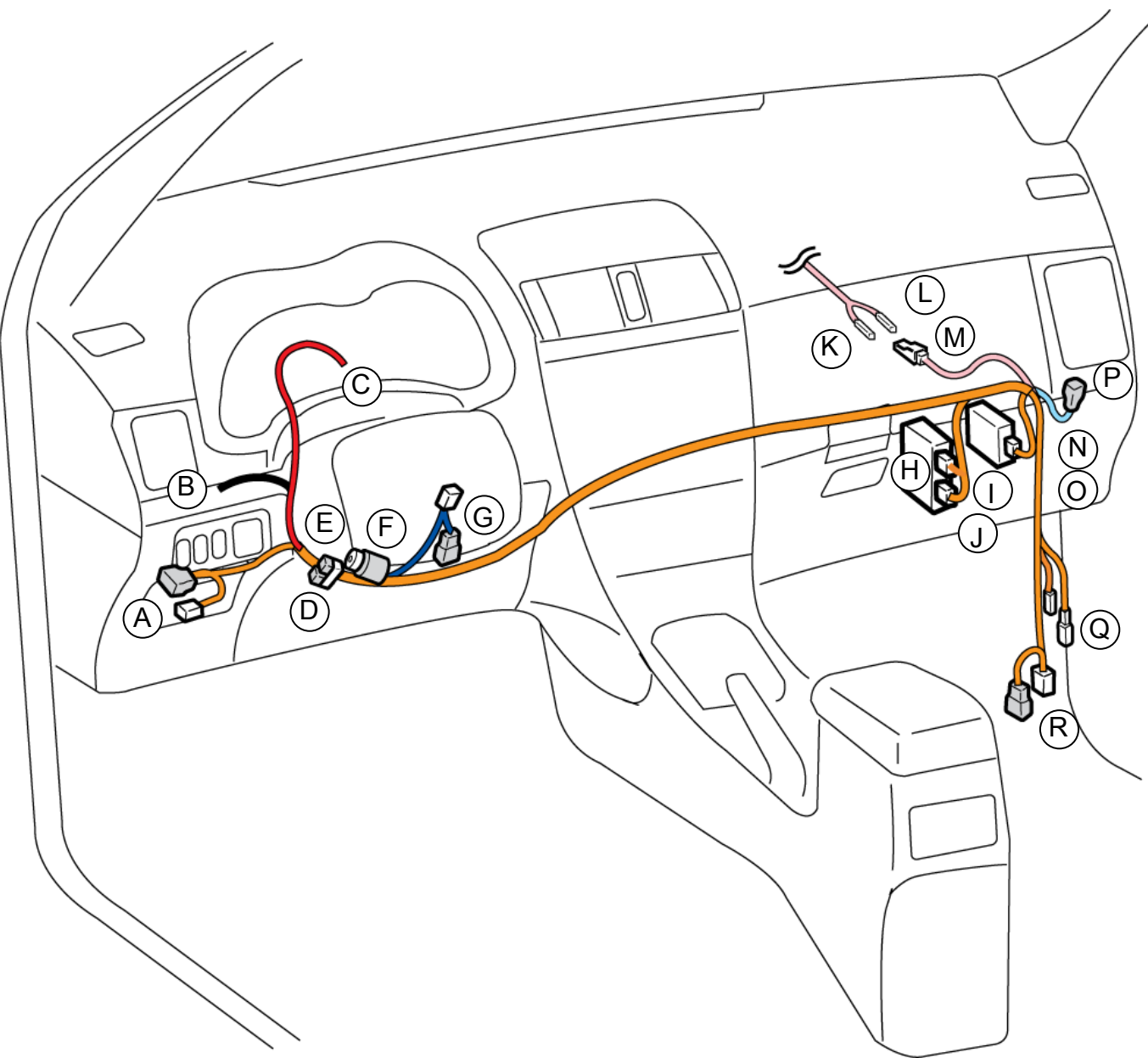
This document covers such items as:

- Vehicle Protection (use of covers and blankets, cleaning chemicals, etc.)
- Safety (eye protection, checking torque procedure, etc.)
- Vehicle Disassembly/Reassembly (panel removal, part storage, etc.)
- Electrical Component Disassembly/Reassembly (battery disconnection, connector removal, etc.)

Please see your Toyota dealer for a copy of this document.

TVIP	Vehicle	Description
A	2D	14P WHITE
B	-	WIRE TERMINAL (Not Used)
C	E46	WIRE TERMINAL (Red Wire)
D	-	WHITE TAPE
E	-	FUSE
F	-	RELAY
G	E4	8P WHITE
H	-	RES ECU
I	-	20P WHITE (for RES ECU)
J	-	8P WHITE (for RES ECU)
K	-	WIRE TERMINAL (Green/Red Wire)
L	-	WIRE TERMINAL (White/Black Wire)
M	-	2P WHITE (for Hood Switch)
N	-	Gateway ECU
O	-	5P WHITE (for Gateway ECU)
P	E92	2P WHITE (Male)
Q	-	1P WHITE (for Registration)
R	EM3	13P WHITE

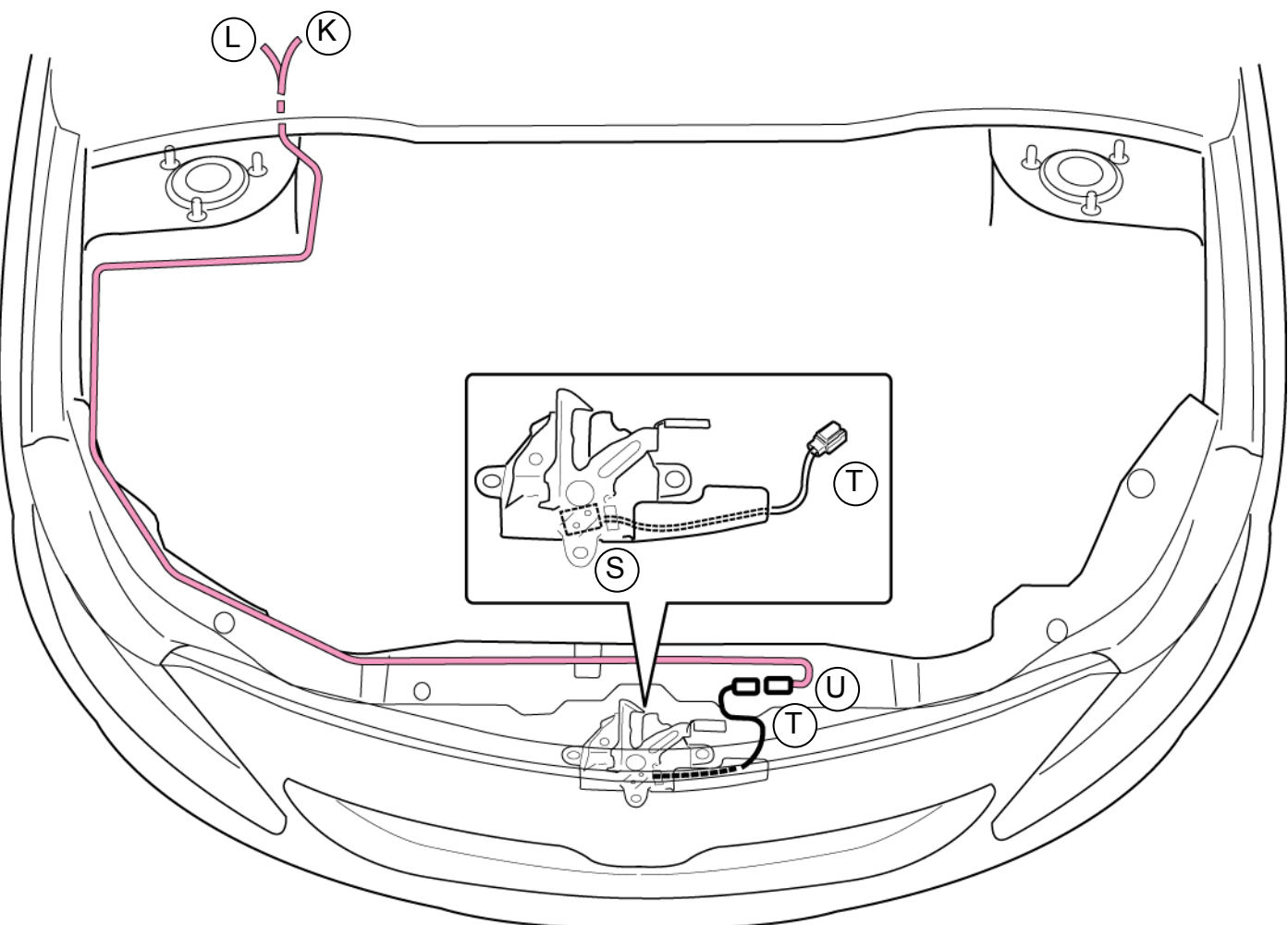
Wire Harness Outline (Passengers Compartment)



TVIP V4 REMOTE ENGINE STARTER (RES)

[illegible]

Wire Harness Outline (Engine Compartment)





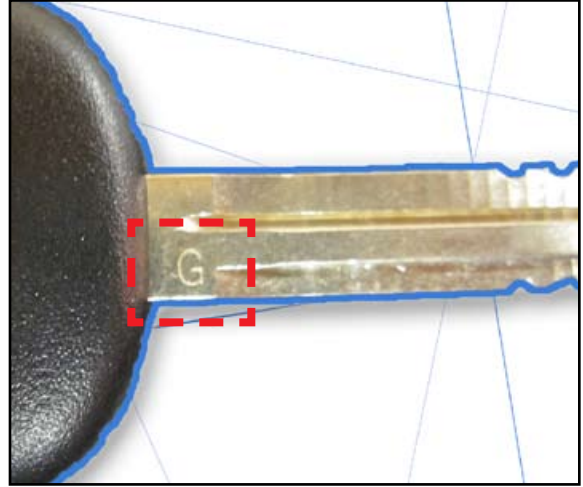
Confirm the Vehicle's Key:

NOTE: There are 2 different Kits and Registration Procedures that can be identified by looking at the Vehicle's Key.



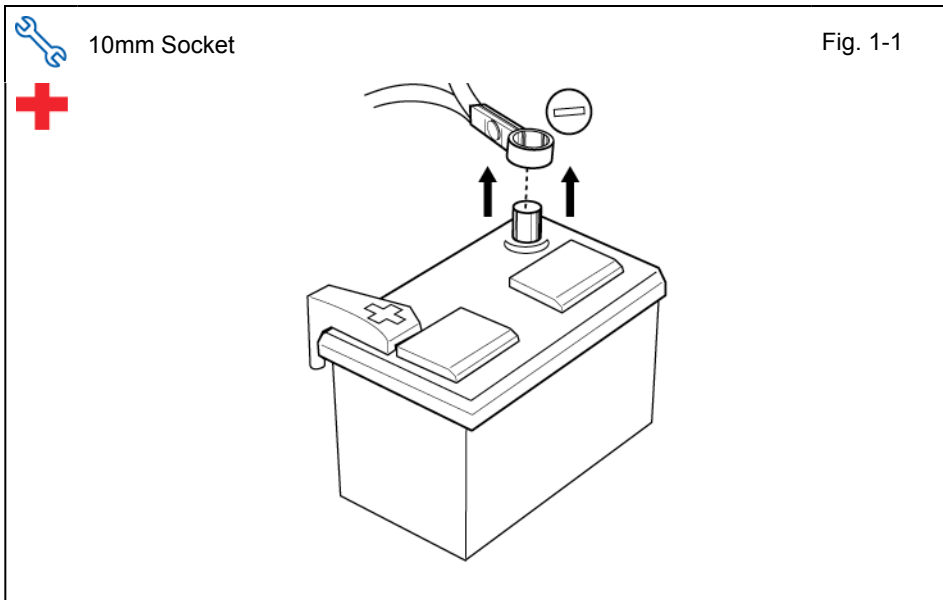
**If the Vehicle's Key does not have
"G" on it**

1. You can use Kit PN: PT398-02080 or PT398-02100
2. You **MUST** Use the Phase 3 Registration. (see registration section pg. 33)



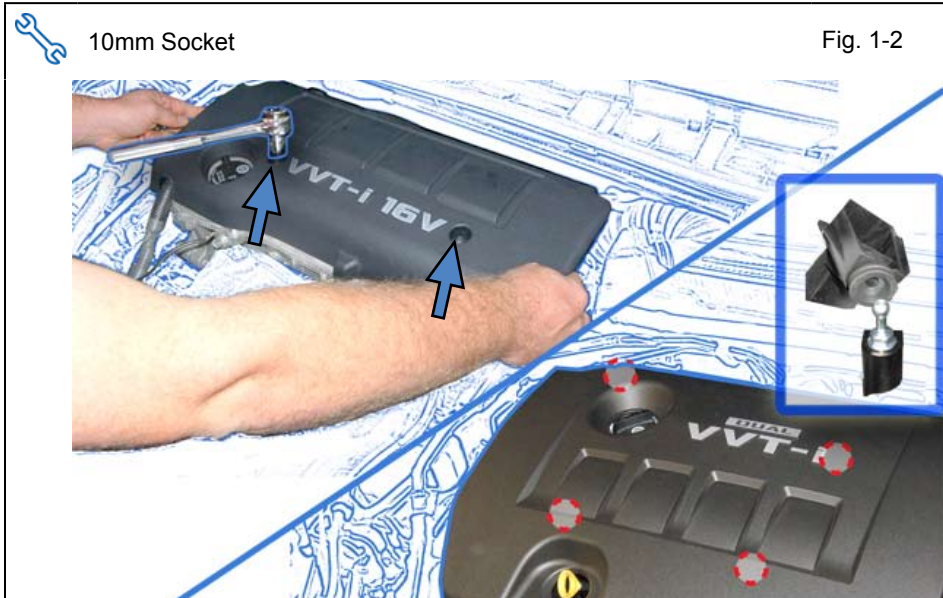
**If the Vehicle's Key has "G" engraved
on it:**

1. You **MUST** use Kit PN: PT398-02100
2. You **MUST** Use the Phase 4 Registration. (see registration section pg. 33)



- 1) Disassembly.
(Engine Compartment)**
- Place the Vehicle in Park with the Parking Brake set.
 - Disconnected the Negative Battery Terminal.
 - Protect the Fender.
 - Note the Battery Cable Position as it will be re-installed in the same position.

CAUTION: Do not touch the Positive Terminal.

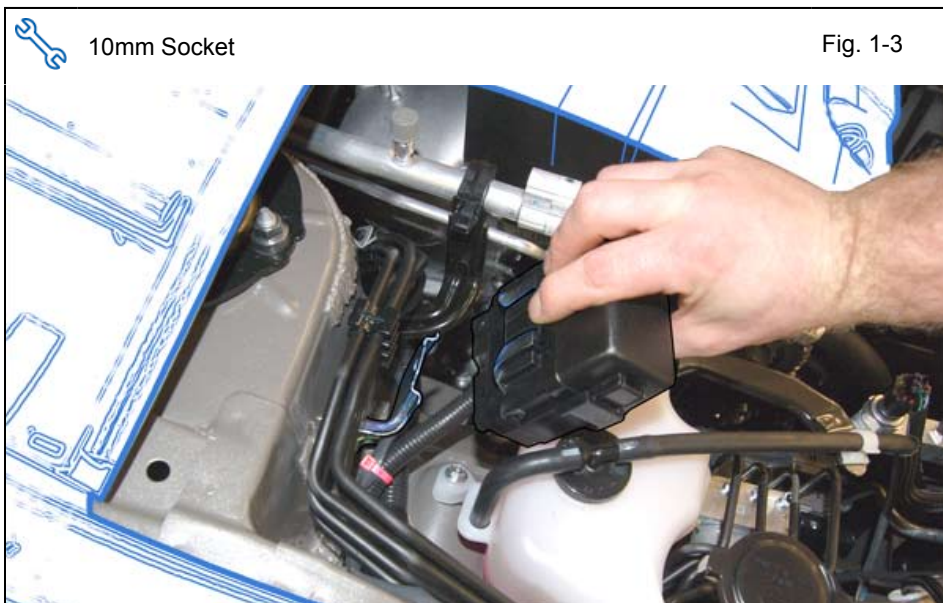


For Bolt on Engine Covers

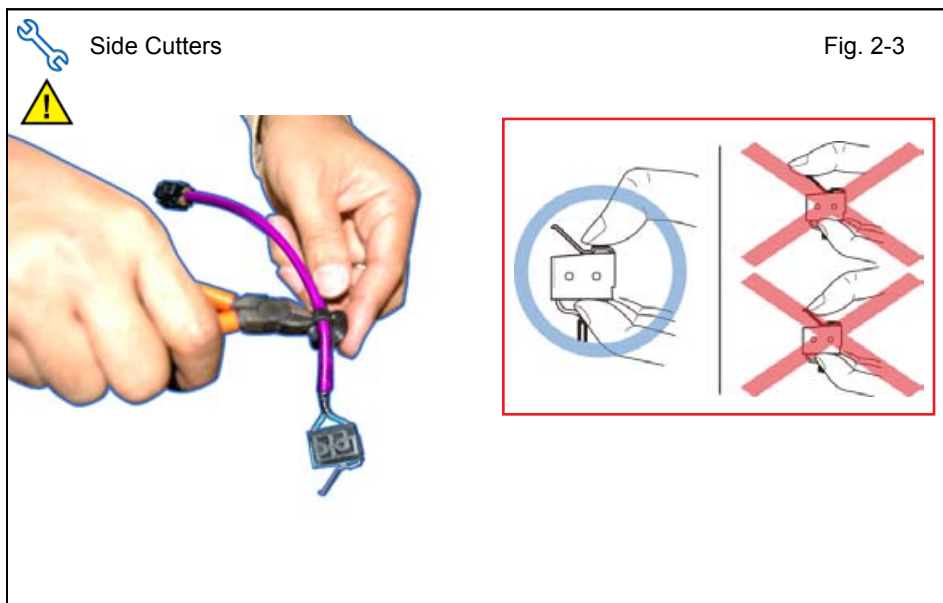
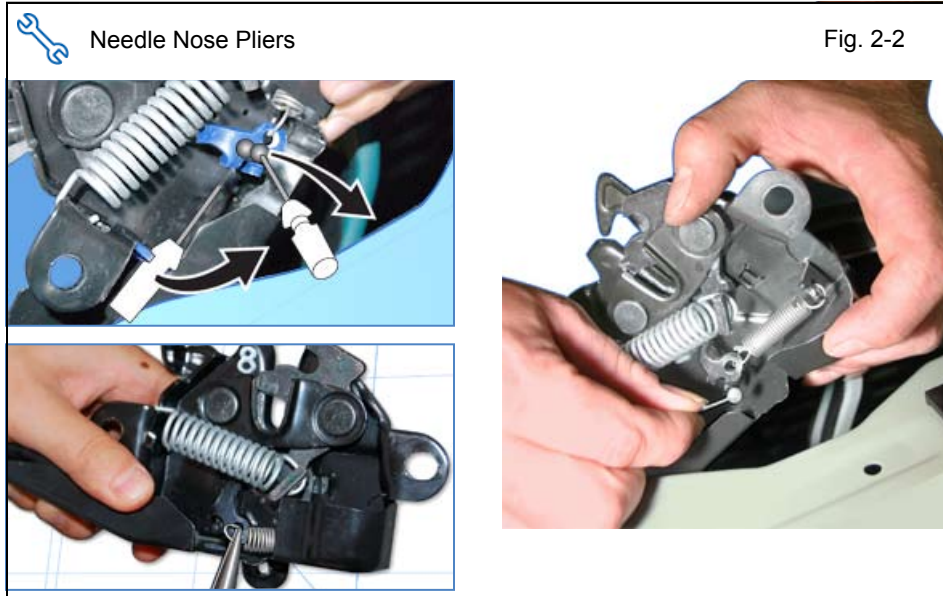
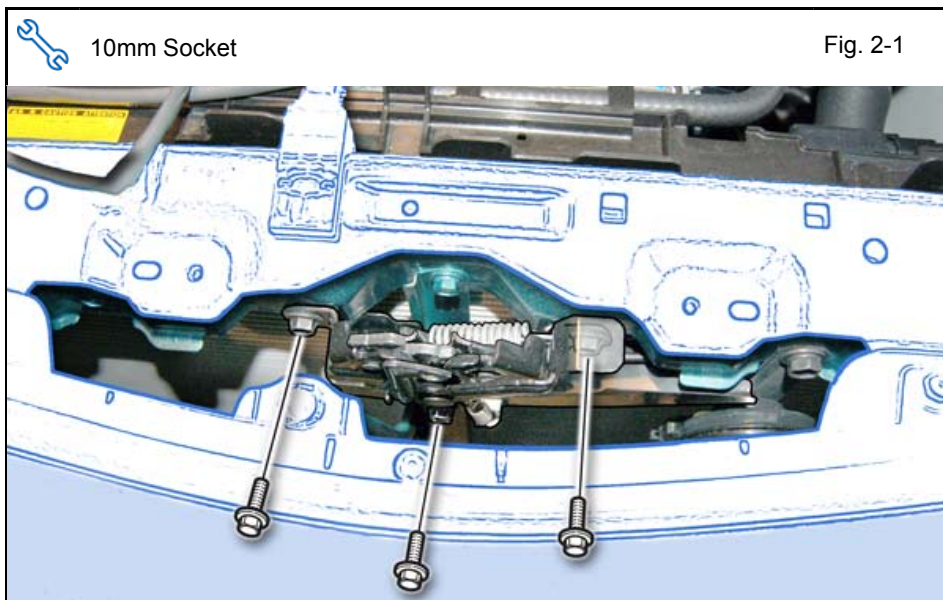
- Remove the Engine Cover.
 - Remove 2 Nuts.

For Clip on Engine Covers

- Remove the Engine Cover.
 - Pull up on the Engine Cover easing the Rubber Grommets off of the Metal Studs on the Engine.



- Dislodge the Relay block.
 - Press in on the clip and slide it off its Bracket.



2) Hood Switch Installation.

- Dislodge the Hood Lock Assembly.
 - Remove 3 Bolts.
- Remove the Hood Lock Cable from the Hood Lock.
- Release the Spring from the Hood Lock.
- Cut the Harness Clamp from the Hood Switch Harness.

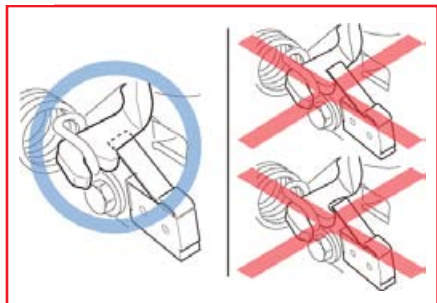


Make sure to hold the Hood Switch by the its sides. If the Hood Switch is broken RES will not function.



Phillips Jewelers Screwdriver

Fig. 2-4



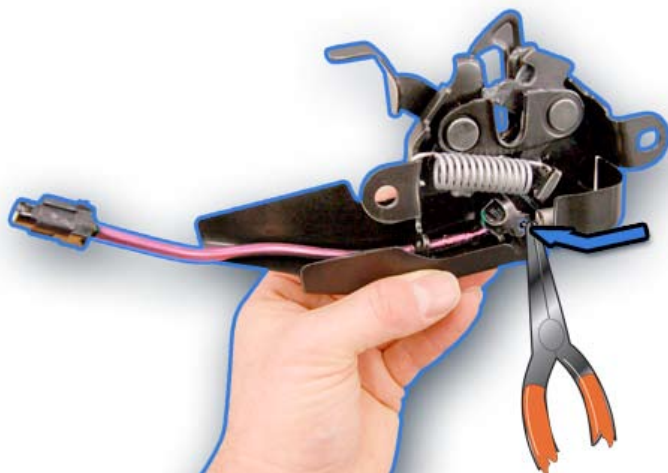
e) Install the Hood Switch with the Switch Lever underneath the Hood Lock Trigger Lever.

Make sure the Hood Switch Lever is positioned properly. If the Hood Switch is Broken RES will not function.



Needle Nose Pliers

Fig. 2-5

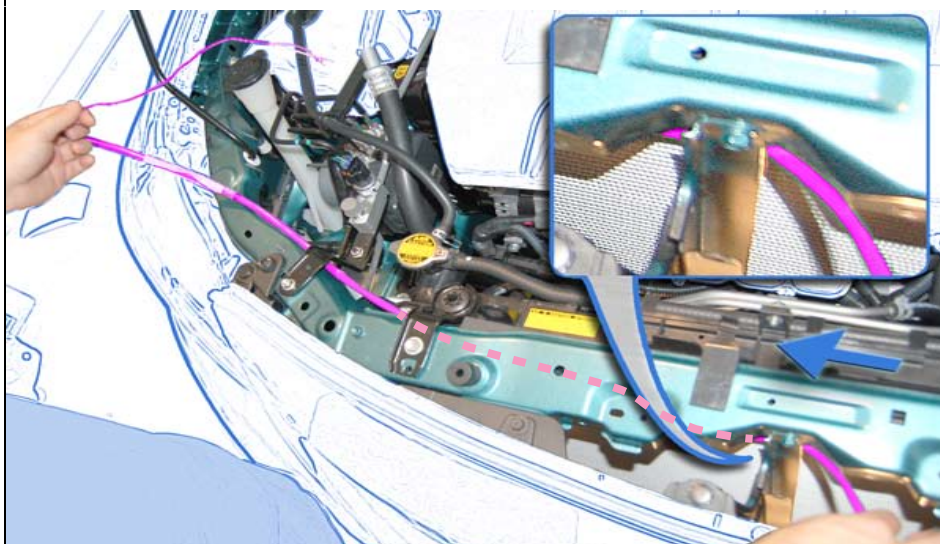


f) Route the Hood Switch Harness as shown.

g) Reinstall the Spring.

CAUTION: Make sure that the Spring seats properly.

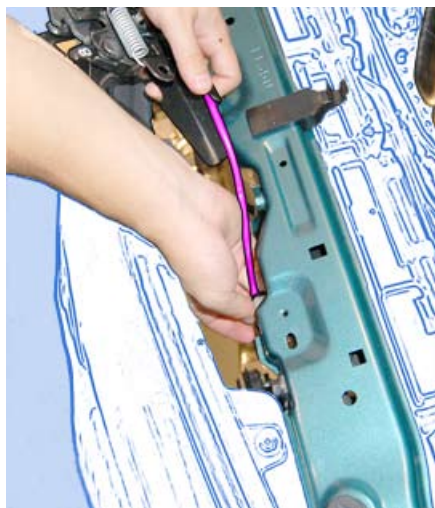
Fig. 2-6



h) Route the Hood Switch Harness below the Radiator Reinforcement Brace.



Fig. 2-7



- i) Connect the 2P Hood Switch Connector to the 2P Hood Switch Harness Connector.
- j) Place the 2P Connectors and Wire Harness Under the Radiator Reinforcement Brace.



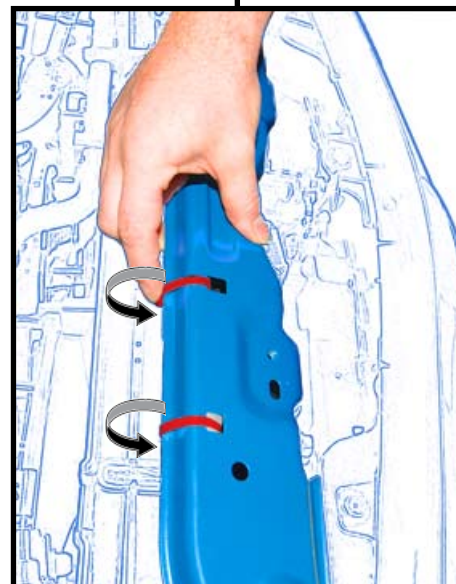
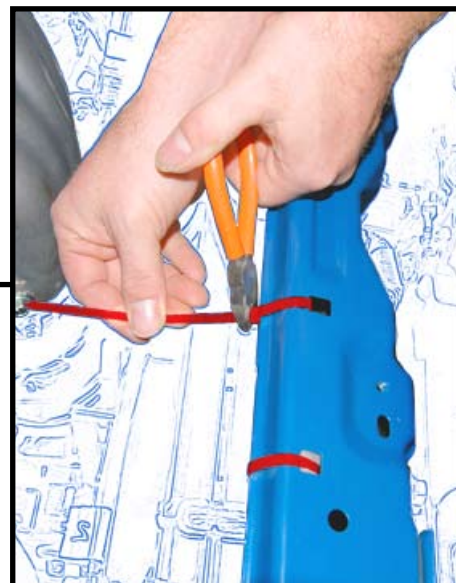
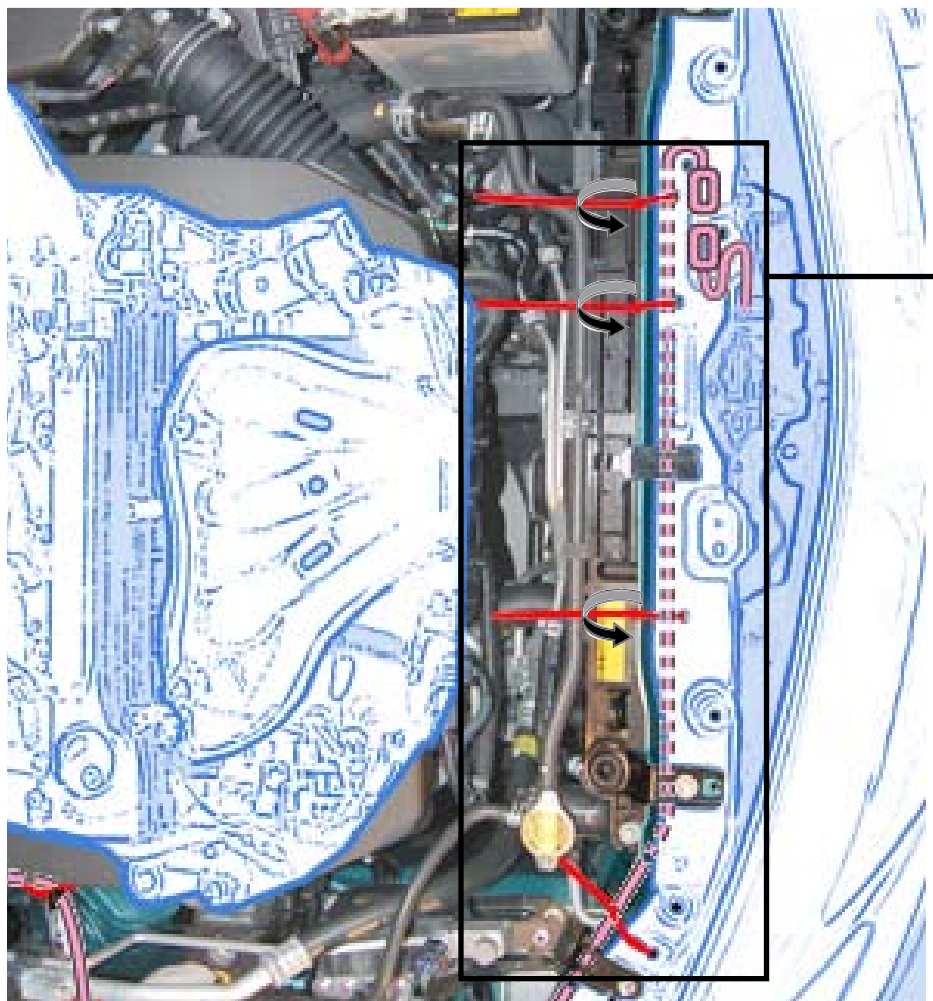
CAUTION: Wrap the Hood Latch in a small blanket before continuing with the Hood Switch Harness routing.

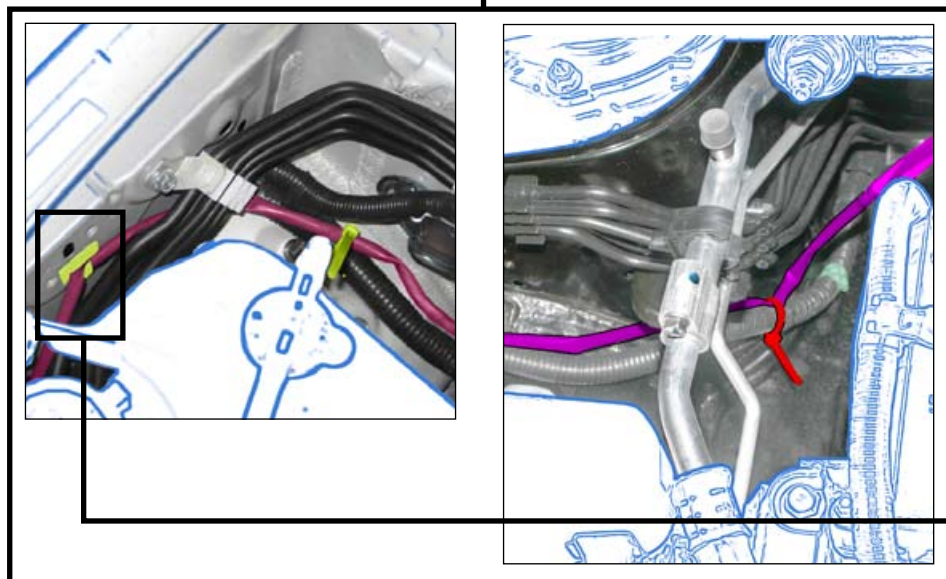
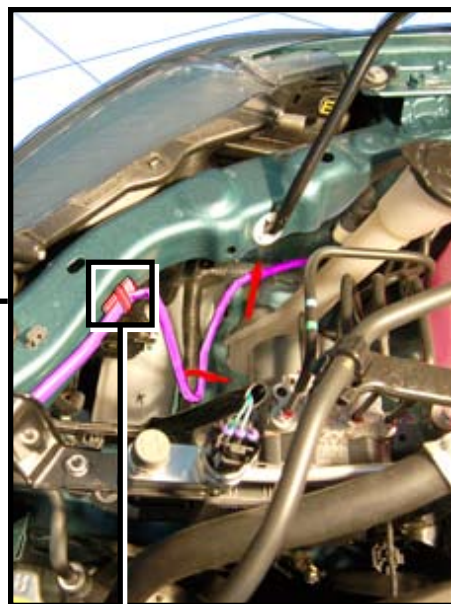
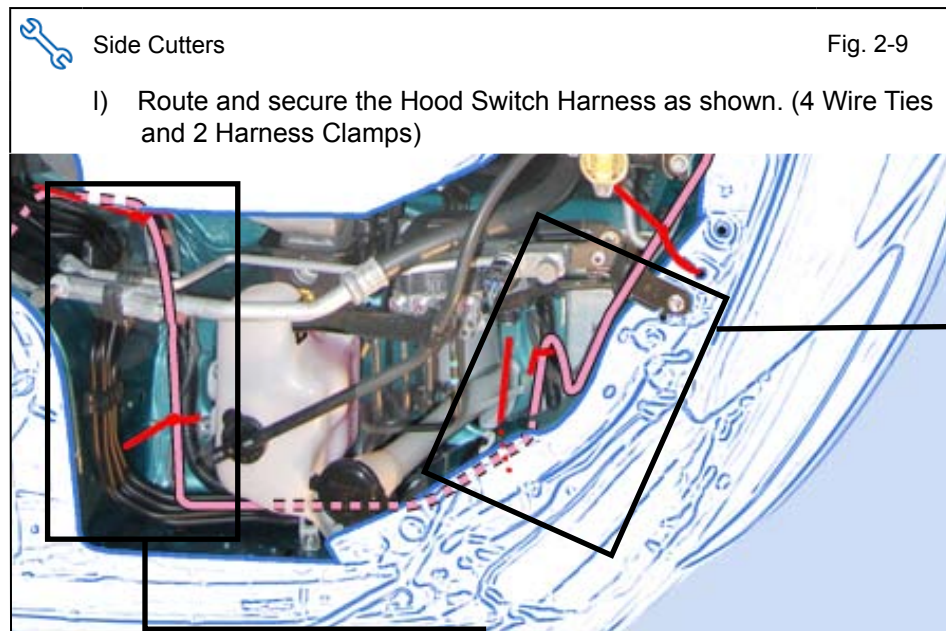


Side Cutters

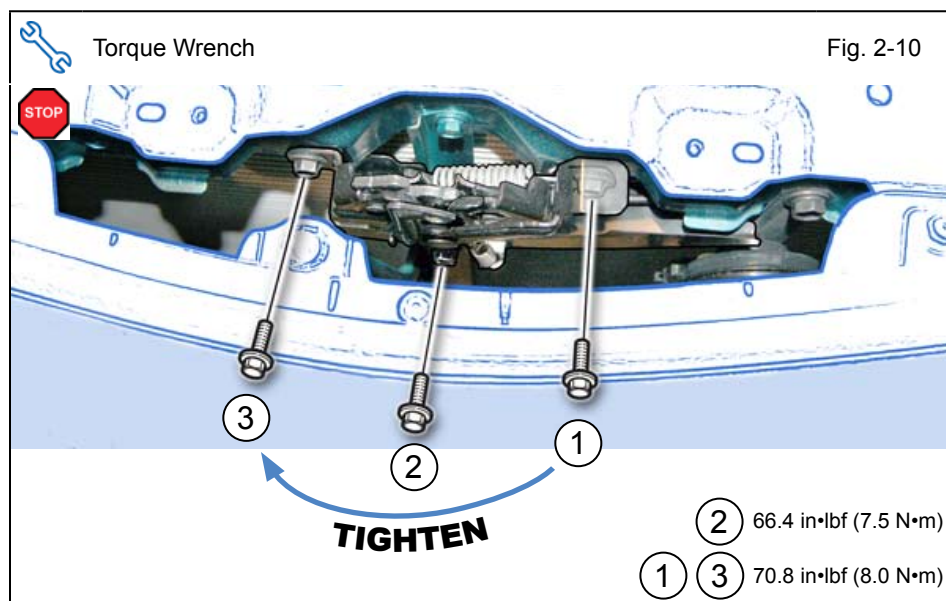
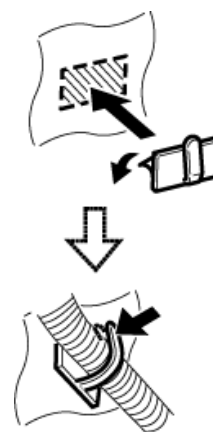
Fig. 2-8

- k) Route and Secure the Hood Switch Harness as shown. (3 Wire Ties)
 - When installing the Wire Ties be sure to rotate their Ratchet End under the Radiator Reinforcement Brace as shown.





NOTE: Clean the mounting surface with VDC approved Cleaner and Cleaning Method.

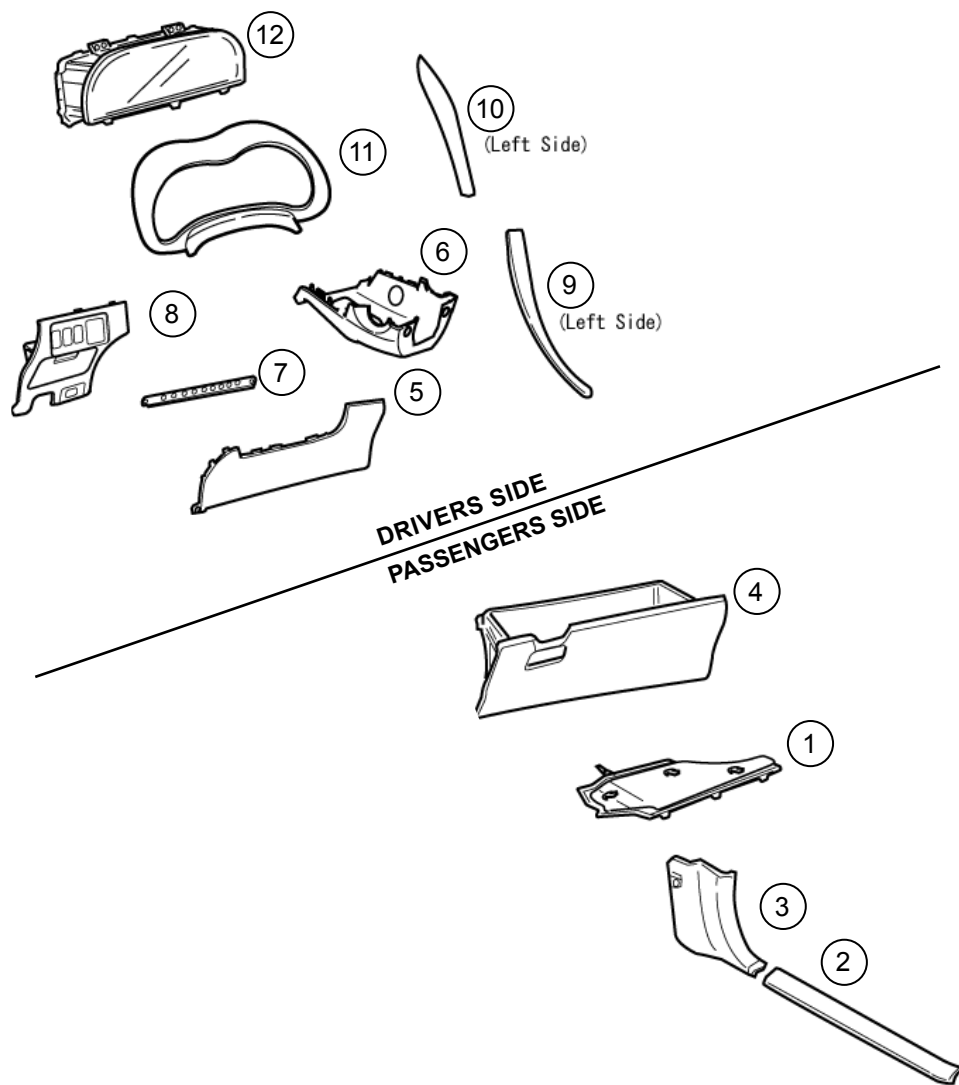


m) Reinstall the Hood Lock.



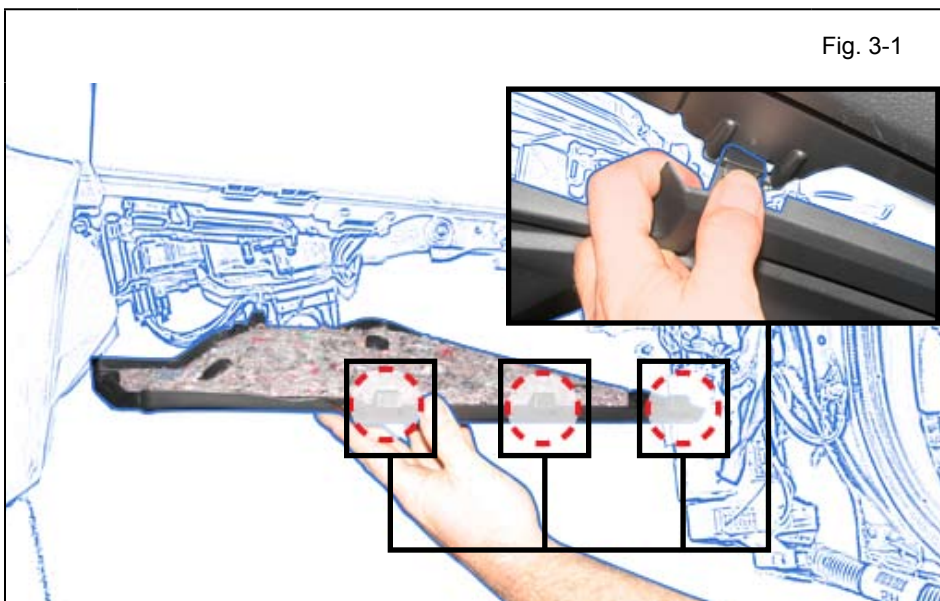
Make sure to Torque the Bolts.

Disassembly Overview



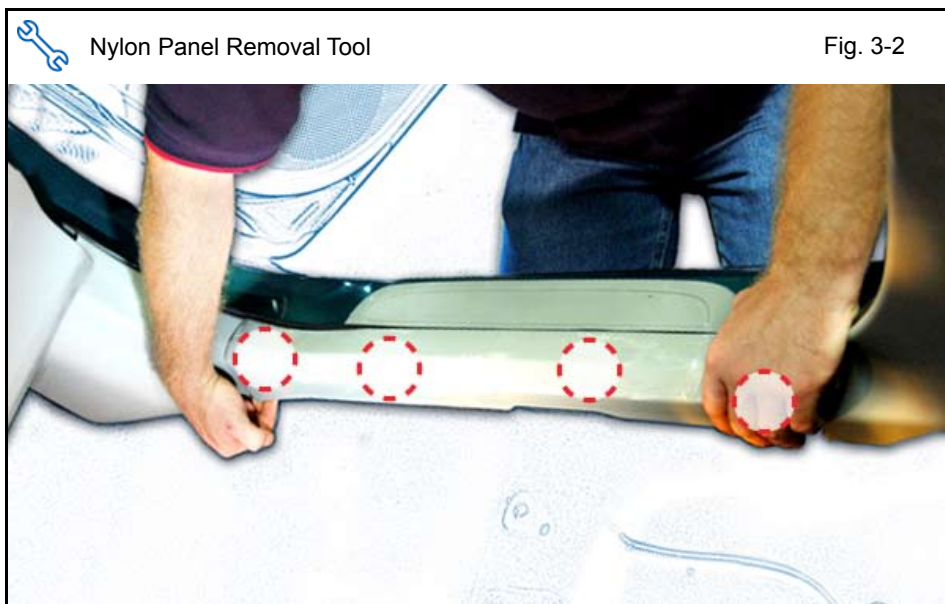
1	Glovebox Under Cover (if equipped)
2	PS Step Cover
3	PS Cowl Cover
4	Glovebox
5	DS Lower Dash Cover
6	Lower Steering Column Cover
7	Lower Dash Brace
8	Left Hand Lower Dash Cover
9	Center Console Lower Trim
10	Center Console Upper Trim
11	IP Panel Trim
12	IP Panel
	Disconnect all Corresponding Connectors

Fig. 3-1

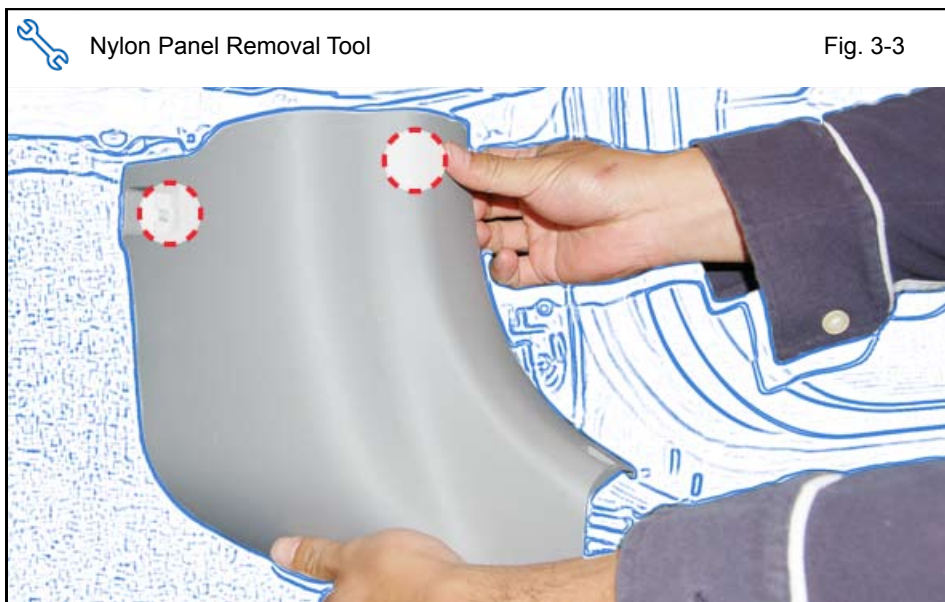


3) Disassembly (Passenger's Area)

- Remove the Glove Box Under Panel. (if equipped)
 - Protect the Vehicle's Interior.



- b) Remove the Passenger's Step Cover.



- c) Remove the Passenger's Cowl Cover.



- d) Disconnect the Dampener from the Glove Box.
e) Remove the Glove Box.

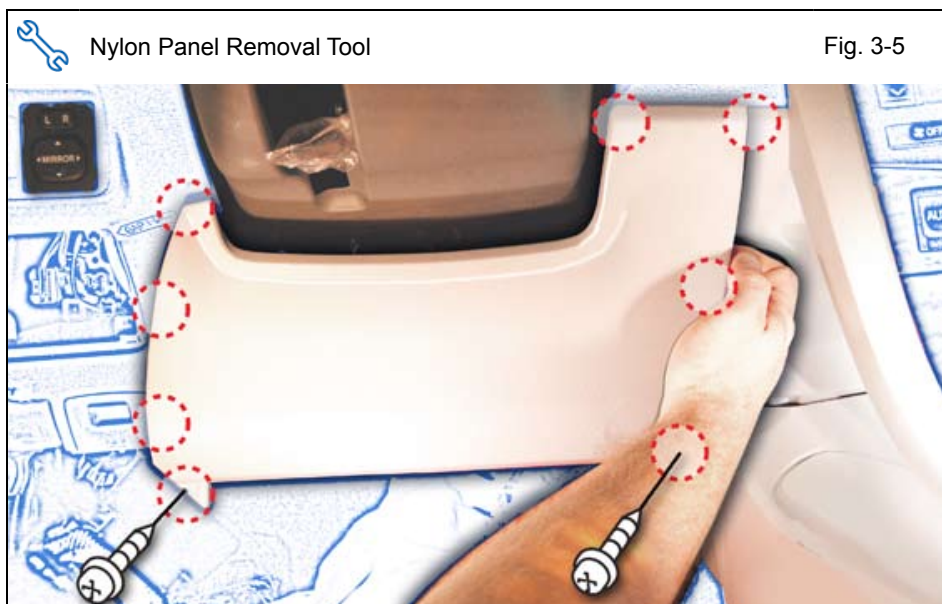


Fig. 3-5

f) Remove the Lower Dash.

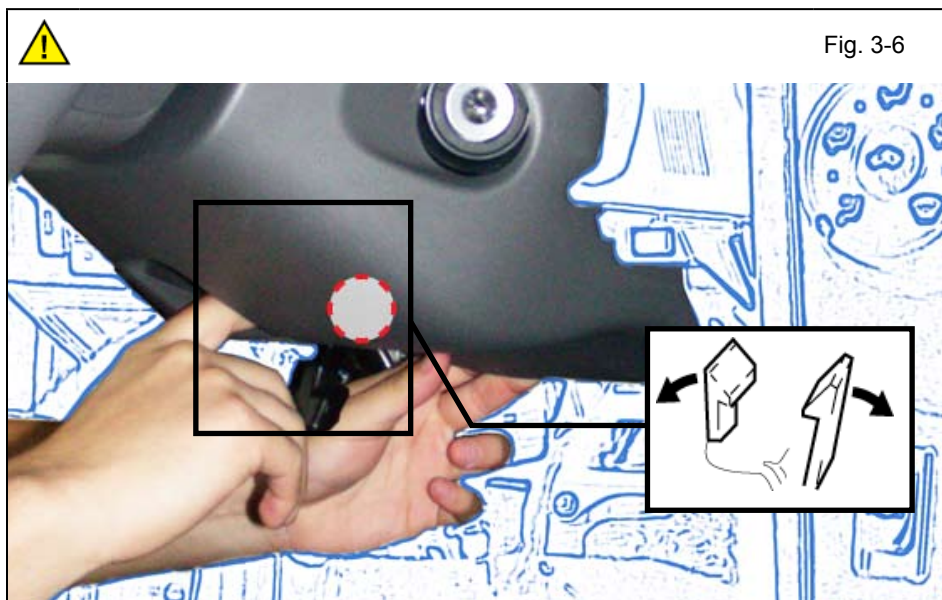


Fig. 3-6

- g) Release the Steering Columns Tilt and Telescope Lock.
- h) Dislodge the Center Clip.
- Insert fingers into the opening of the Tilt Lever of the Steering Column Under Cover to disengage 1 Claw.



CAUTION: Do not force this clip as it is very easy to break.

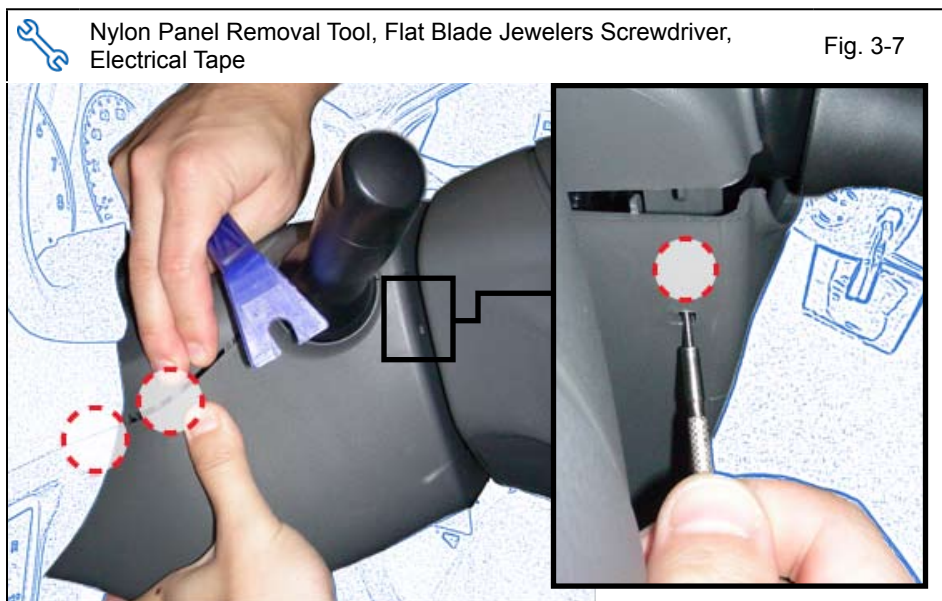
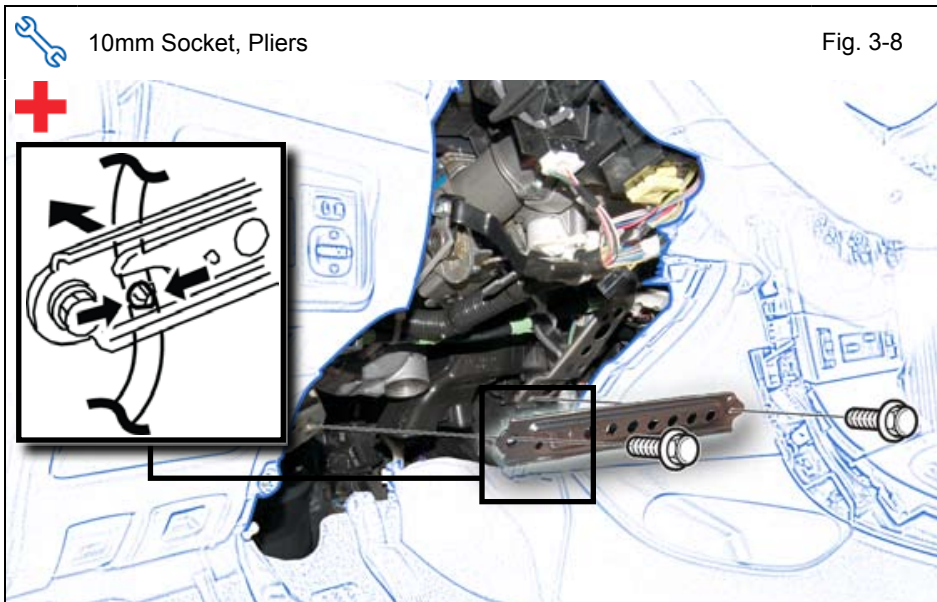


Fig. 3-7

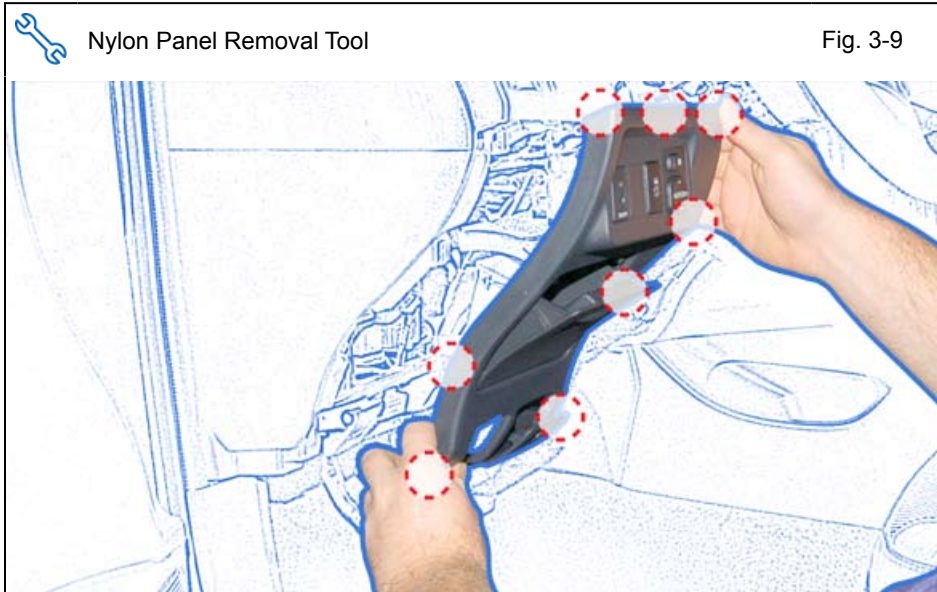
- i) Dislodge the Back Clips on both sides.
- j) Release the Front Clips on both sides.
- Insert the Key into the Ignition and turn it to ON.
 - Turn the Steering wheel from Right to Left to access the Holes.
 - Use a Flat Blade Jewelers Screwdriver wrapped with Electrical Tape to release the clips.
 - Remove the Key from the Ignition.



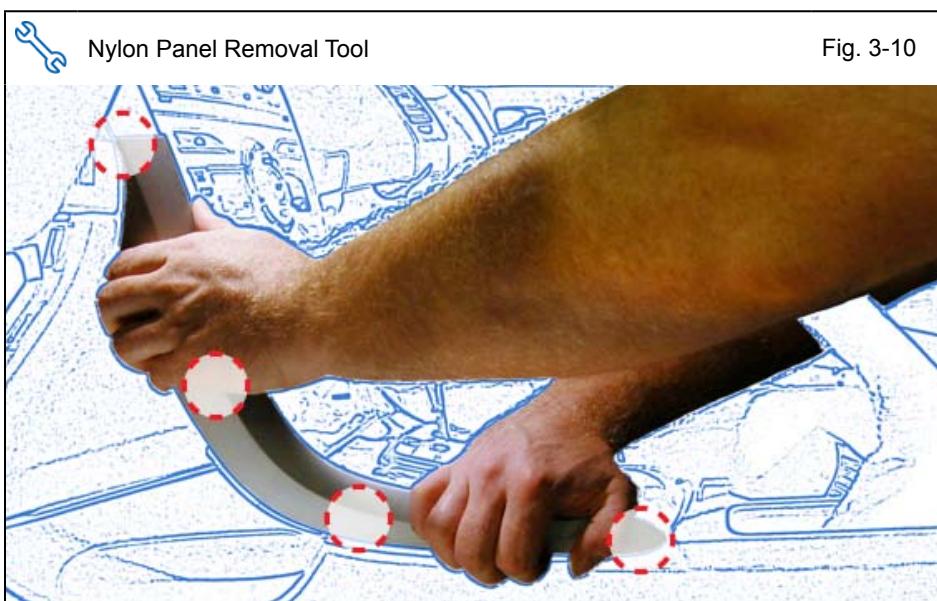
k) Remove the Lower Dash Brace.

- Remove 2 Nuts.
- Disconnect the Vehicle Harness Clip from the Brace.

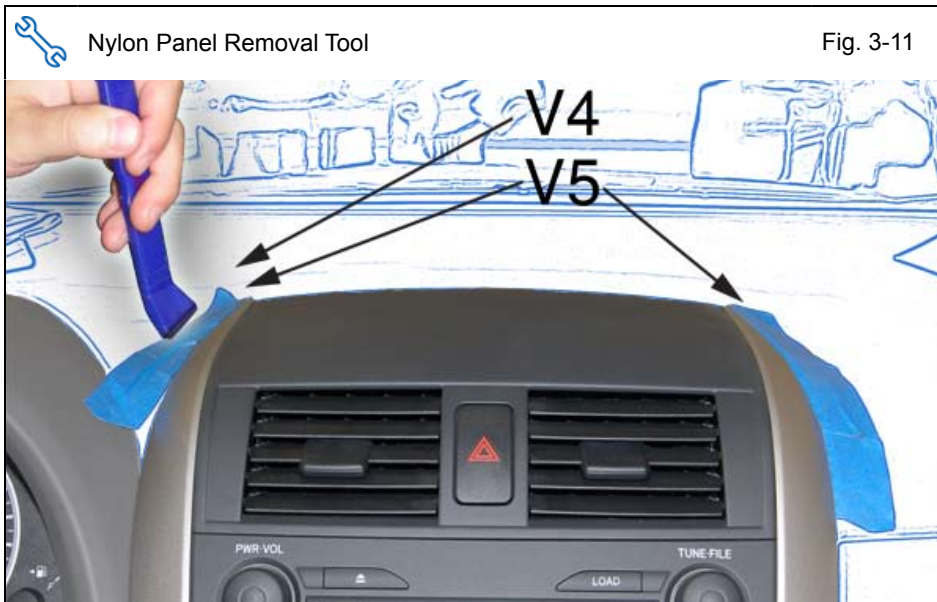
CAUTION: Sharp metal edges.



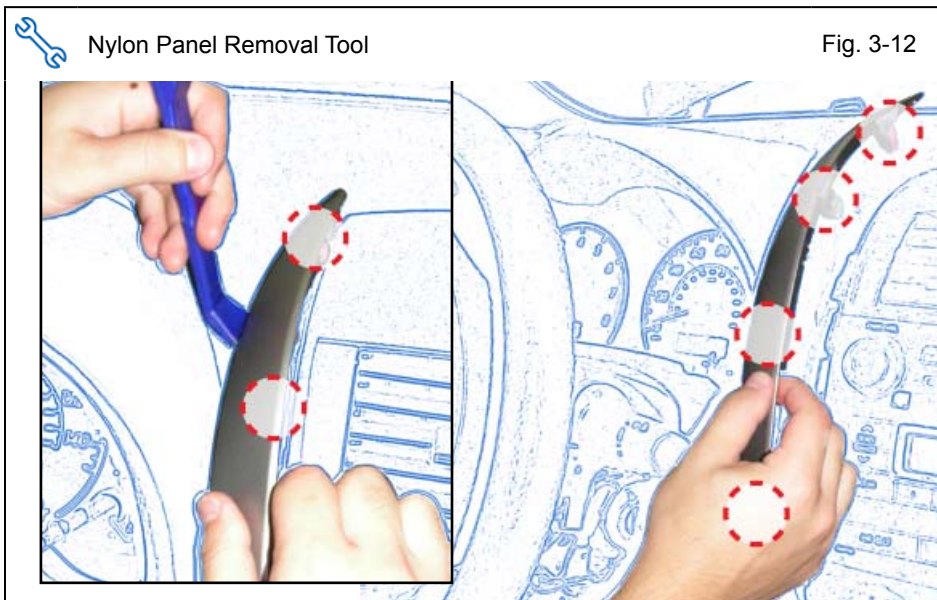
l) Remove the Left Hand Lower Dash Panel.



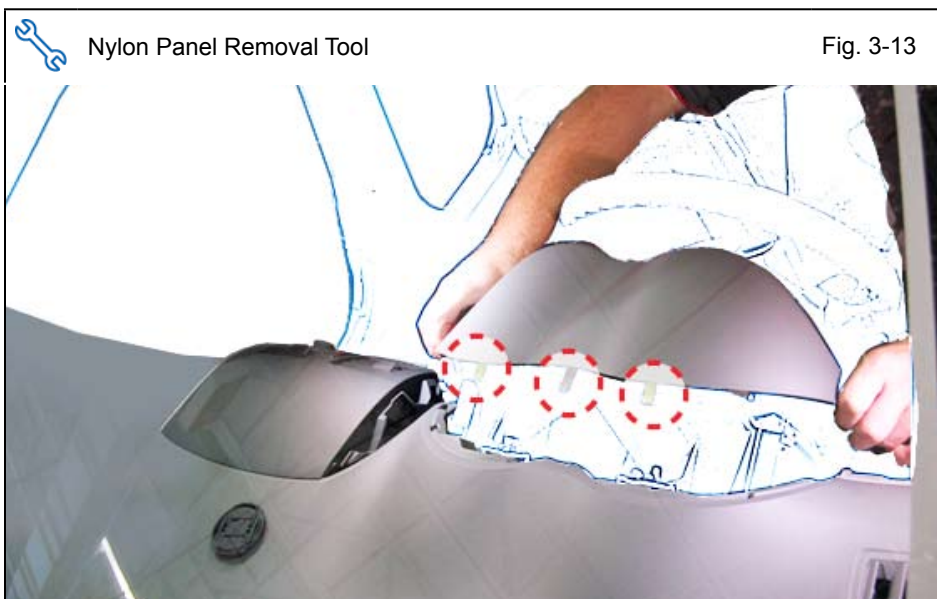
m) Remove the Center Console's Left Lower Trim.



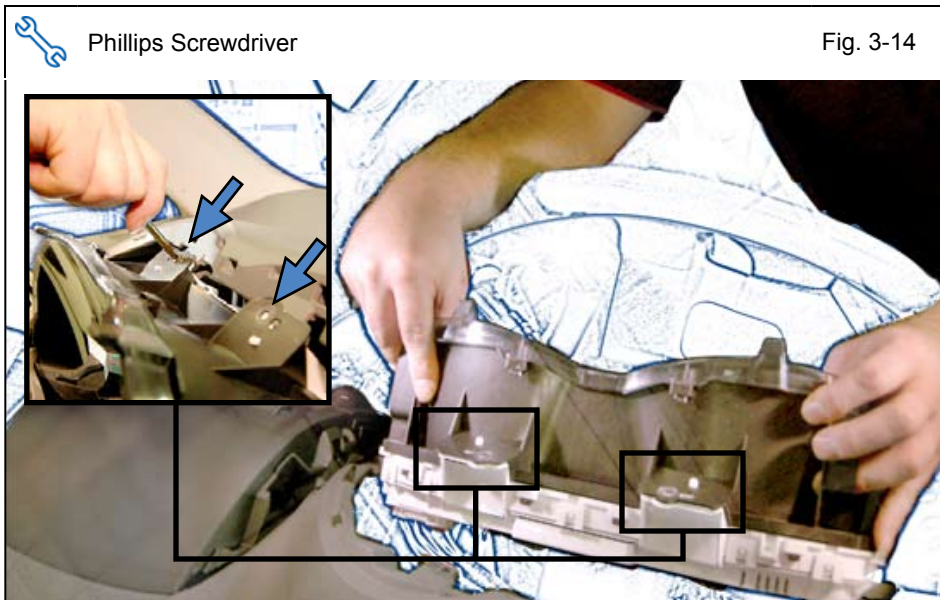
- n) Use Masking tape to protect the Dash.



- o) Remove the Center Console's Left Upper Trim.



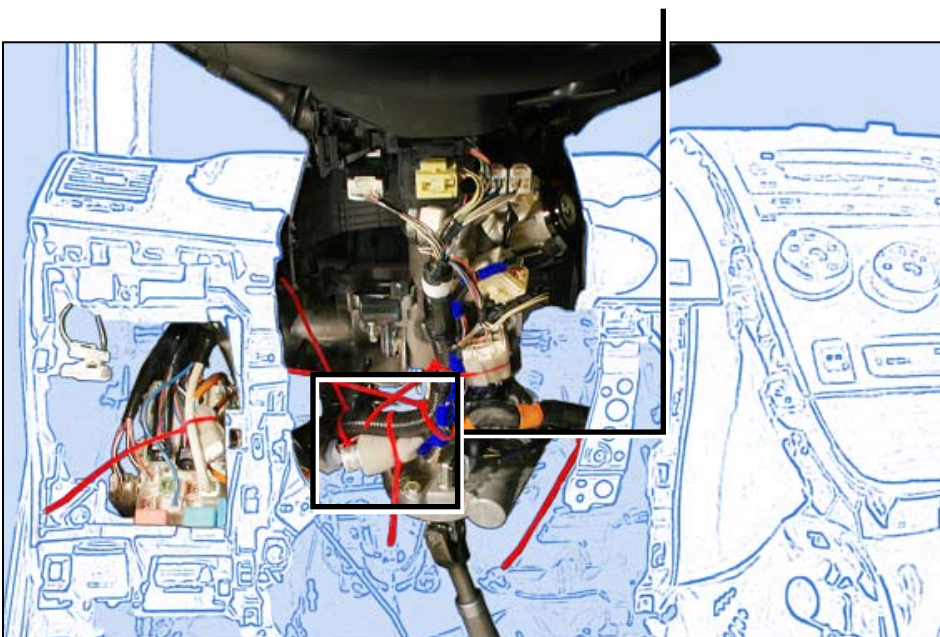
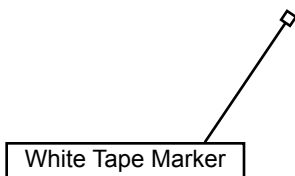
- p) Remove the IP Panel's Trim.

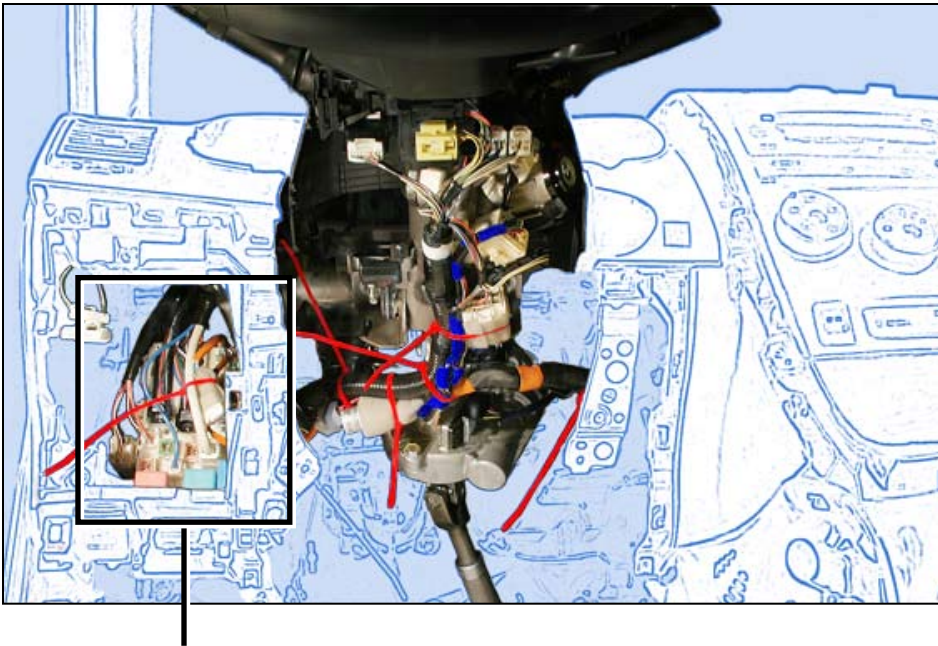


- q) Remove 2 Screw from the IP Panel.
- r) Remove the IP Panel.

4) V4 Harness Installation. (Driver's Side)

- a) Locate the Vehicle Harness Clamp below the Steering column on the Drivers Side.
- b) Secure the White Tape Marker to the Vehicle Harness with 1 Wire Tie.
- c) Secure the V4 Harness and its Relay to the Vehicle Harness with 1 Wire Tie.





V4 ONLY

- d) Route the two 14P V4 Connectors toward the Driver's Side Junction Block.
- e) Secure the V4 Harness to the Vehicle Harness with 1 Wire Tie.
- f) Disconnect the Vehicle 14P Connector from the Driver's Side Junction Box.

- g) Plug the V4 14P Connectors in between the Vehicle Connector and the Junction Box.
- h) Secure the Connectors to the Vehicle Harness with 1 Wire Tie.

V4/ V5 ADD ON ONLY

- i) Cut the Wire Tie securing the V5 14P Connector.
- j) Cut the Wire Tie securing the V5 Harness to the Vehicle Harness.

- k) Disconnect the Vehicle 14P Connector from the V5 Connector.



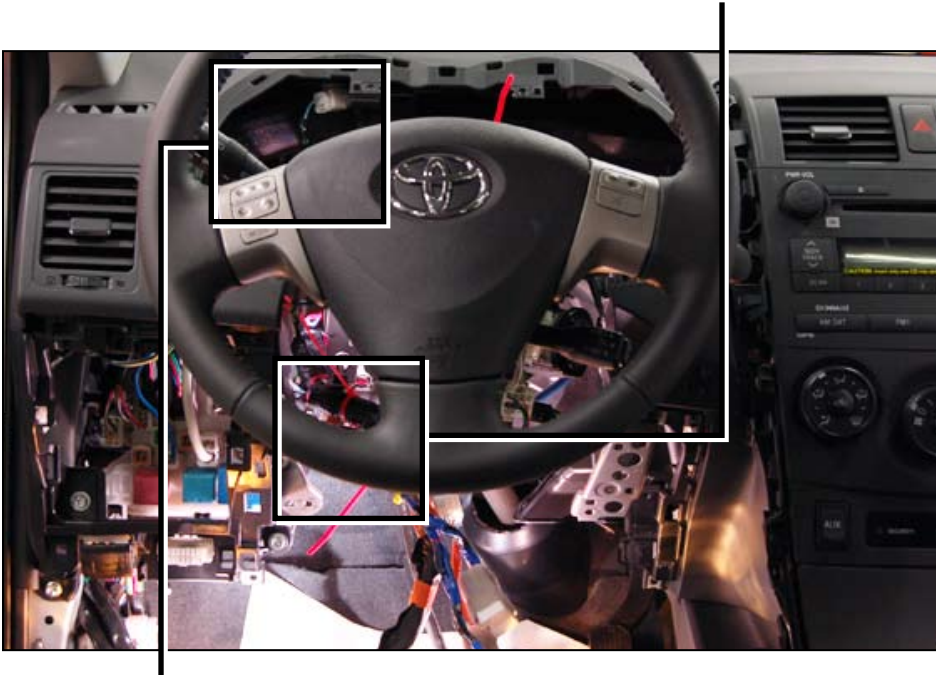
- l) Route the two V4 14P Connectors towards the Driver's Side Junction Box.
- m) Connect the V4 14P Connector to the V5 14P Connector.
- n) Connect the Vehicle 14P Connector to the V4 14P Connector.
- o) Secure the V4 and V5 14P Connectors to the Vehicle Harness with 1 Wire Tie.
- p) Secure the V4 and V5 Harnesses to the Vehicle Brace with 1 Wire Tie.



5) V4 Harness Installation. (IP Panel)

GO BACK to the White Tape
Marker

- a) Route the Red Wire upward
as shown.
- b) Secure the Red Wire and
the Bundled up Black Wire
to the Vehicle Harness with
1 Wire Tie.



- c) Route the Red Wire and
secure it with 1 Wire Tie.

- d) Route the Red Wire and secure it with 3 Wire Ties to the Vehicle Harness.
- e) Use a Splicing Connector to secure the V4 Red Wire to the Wire from Pin 1 on the 40P Vehicle Connector.
- f) Bundle up the excess TVIP wire and secure to the Vehicle Harness with 1 Wire Tie.

6) V4 Harness Installation. (Steering Column)

- a) Disconnect the 8P IG Connector.
- b) Remove the Tape securing the 8P IG Connector's Wires and the Black 2P Connector Harness.
- c) Re-Tape the Black 2P Connector Wires.
 - Do not secure the 8P IG Connector's Wires.
- d) Plug the V4 8P Connectors in between the Vehicle's 8P IG Connectors.



- e) Secure the 8P Connectors to Vehicle Harness with 1 Wire Tie.



CAUTION: Make sure the Connectors and Harness align properly.

- f) Secure the V4 Harness to the Vehicle Harness with 1 Wire Tie.



NOTE: Verify that the Steering Column Tilts and Telescopes without interference and there is no tension on the connectors.

- g) Route the V4 Harness through the Center Console.
- h) On the Driver's Side secure the V4 Harness to the Vehicle Brace with 1 Wire Tie.

7) V4 harness Installation (Passenger's Side)

- a) Secure the V4 Harness to the Vehicle Braces with 3 Wire Tie.



- b) Route the V4 Harness's 8P and 20P Connectors as shown.
- c) Secure the V4 Harness to the Vehicle Harness with 1 Wire Tie as shown.

8) Hood Switch Harness Routing. (Continued)

- a) Dislodge the Vehicle ECU.
 - Remove 1 bolt.

- b) Dislodge the Grommet.



- c) Rotate the Grommet to gain access to the Large Rubber Nipple.

- d) Secure the Pin Terminals from the Hood Switch Harness to the Wire Routing Tool with Electrical Tape.

- e) Cut the Large Nipple.



NOTE: Do not cut the Small Nipple.



CAUTION: Do not damage the Pin Terminals.

- f) Pull the Hood Switch Harness through the Large Hole.
- g) Remove the Tape securing the Hood Switch Harness to the Wire Routing Tool



- h) Using 1/2 Piece of Butyl Tape fill the opening of the Grommet.
- i) Secure with Electrical Tape.
- j) Re-rotate the Grommet.

- k) Re-fit the Grommet into the Firewall.



CAUTION: Makes sure that the Grommet seats into the Firewall.

- l) Secure the Hood Switch Harness to the Vehicle Harness with 1 Wire Tie.



Fig. 9-1



Fig. 9-2



9) RES ECU and Gateway ECU Preparation.

- a) Attach the RES Bracket to the RES ECU as shown.

- b) Attach the Gateway ECU Bracket to the Gateway ECU as shown.

10) V4 Installation (Glovebox Area)

- a) Install the RES ECU and Bracket.

- b) Connect the 8P Connector to the RES ECU.
- c) Connect the 20P Connector to the RES ECU.

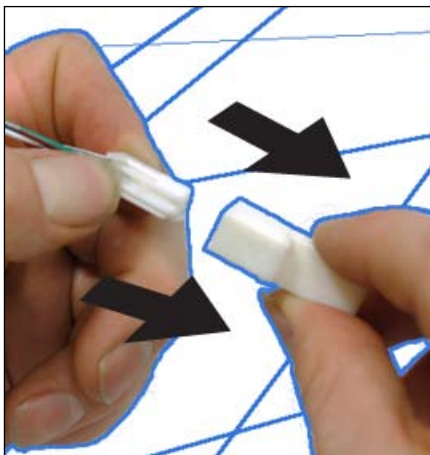
- d) Route the V4 Harness securing it with 2 Wire Ties.

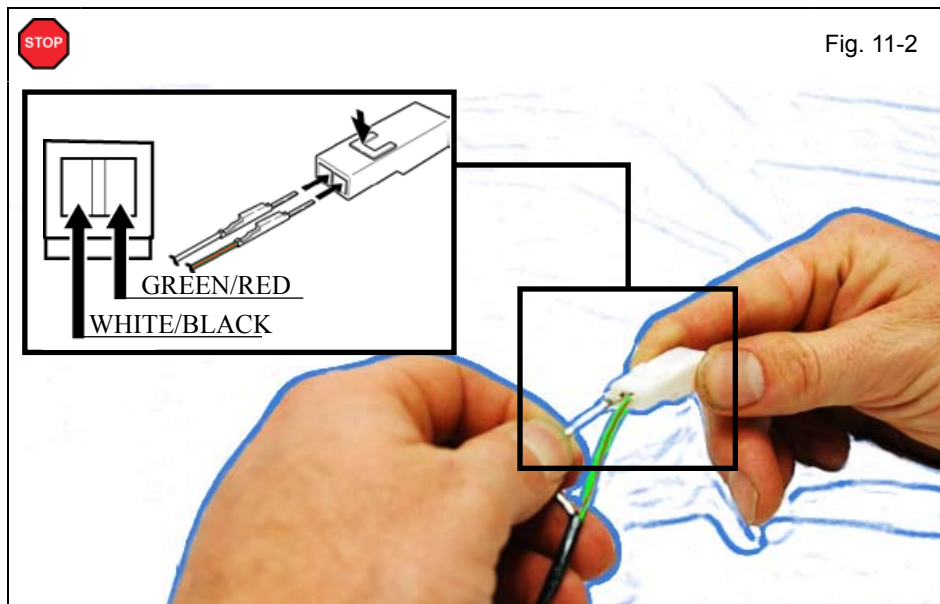
11) Hood Switch Pin.

- a) Disconnect the Empty 2P Connector from the V4 Harness.
- b) Lift up the Terminal Retainer Clip.
 - Do not Remove the Clip.

 Flat Blade Jewelers Screwdriver

Fig. 11-1





- c) Insert the Terminal on the WHITE/BLACK Wire of the Hood Switch Harness into the Connector.
- d) Insert the Terminal on the GREEN/RED Wire of the Hood Switch Harness into the Connector.



VERIFY: Terminal Pins are properly inserted and do not come out.

- e) Close the Terminal Retainer Clip.
- f) Re-Connect the V4 2P Connectors.
- g) Wrap the 2P Connectors with 1/2 Piece of Foam Tape.

- h) Re-install the Vehicle's ECU.

12) V4 Harness Installation (Passenger's Cowl Area).

- a) Connect the V4 2P Connector, marked with Sky Blue Tape, to the Vehicle's Pre-wire.
- b) Secure both Connectors and the V4 Harness to the Vehicle Harness with 2 Wire Ties.
- c) Install the Gateway ECU.



- d) Connect the V4 5P Connector to the Gateway ECU.
- e) Route the V4 Harness down towards the Passenger's Cowl Area.
- f) Secure the V4 Harness to the Vehicle Harness with 1 Wire Tie.
- g) Route the V4 Harness as shown.



h) Secure the V4 Harness to the Vehicle Harness with 1 Wire Tie.

i) Locate and disconnect the 13P Connector from the Passenger's Cowl Connector Block.

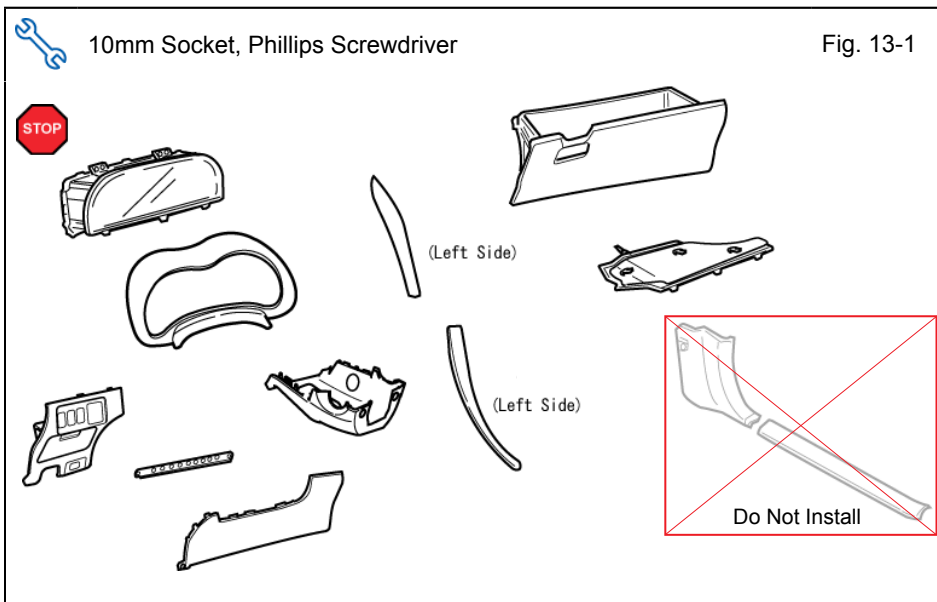
j) Plug the V4 13P Connector in between the Connector Block and the Vehicle 13P Connector.



- k) Secure the 13P Connectors to the Vehicle Harness with 1 Wire Tie.
- l) Secure the 1P Male RES Diagnostic Connector and the V4 Harness to the Vehicle Harness with 1 Wire Tie.



NOTE: Do not secure Female Connector or its wire.



13) Registration Preparation.

- a) Reassemble the Vehicle.



Note: Make sure that all Connectors are reconnected.



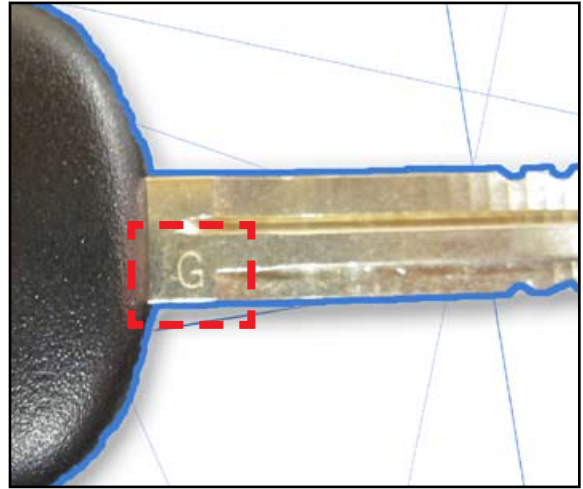
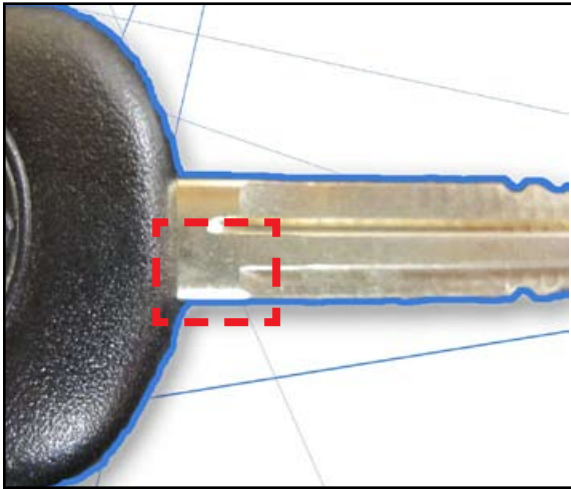
Note: Verify that panels fit together properly, with no uneven gaps.

- b) Verify that the Short Pin is Installed.
 - If not Install now.



Confirm the Vehicle's Key:

NOTE: There are 2 different Registration Procedures that can be identified by looking at the Vehicle's Key.

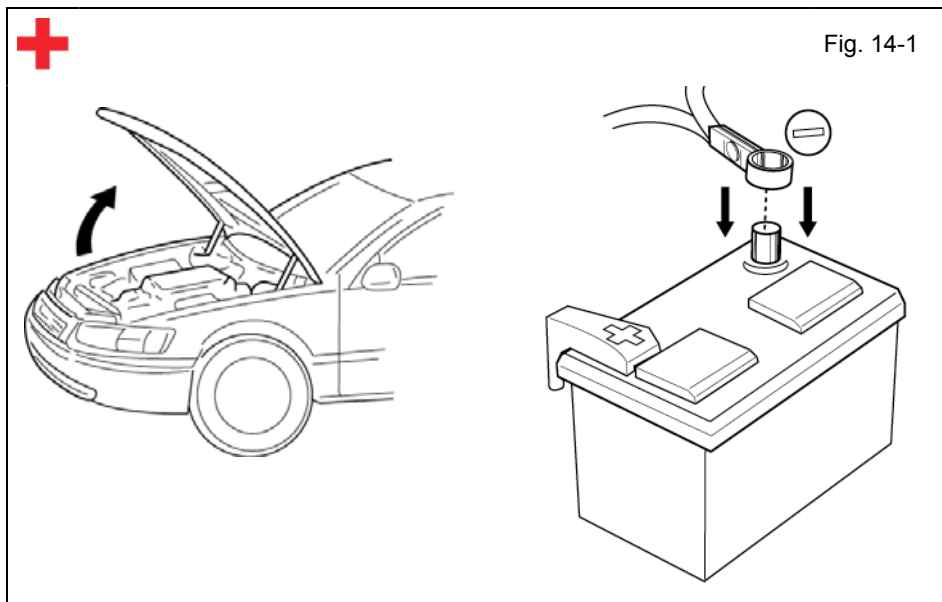


**If the Vehicle's Key does not have
"G" on it**

1. Make sure you used
Kit PN: PT398-02080 or PT398-02100
2. You **MUST** perform Phase 3
Registration. (Section 14 Pages 34-37)

**If the Vehicle's Key has "G" engraved
on it:**

1. Make sure you used
Kit PN: PT398-02100
2. You **MUST** perform Phase 4
Registration. (Section 15 pages 38-41)



14) Phase 3 Registration.

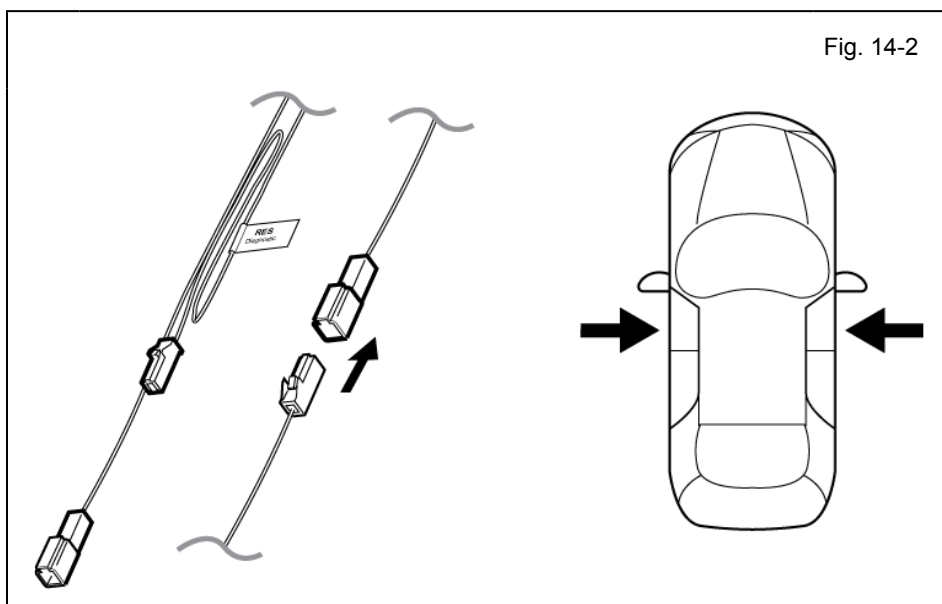


VERIFY: The Vehicle's Key does not have "G" on it. (see page 33)

- Open the Hood.
- Temporarily reconnect the Negative Battery Cable.



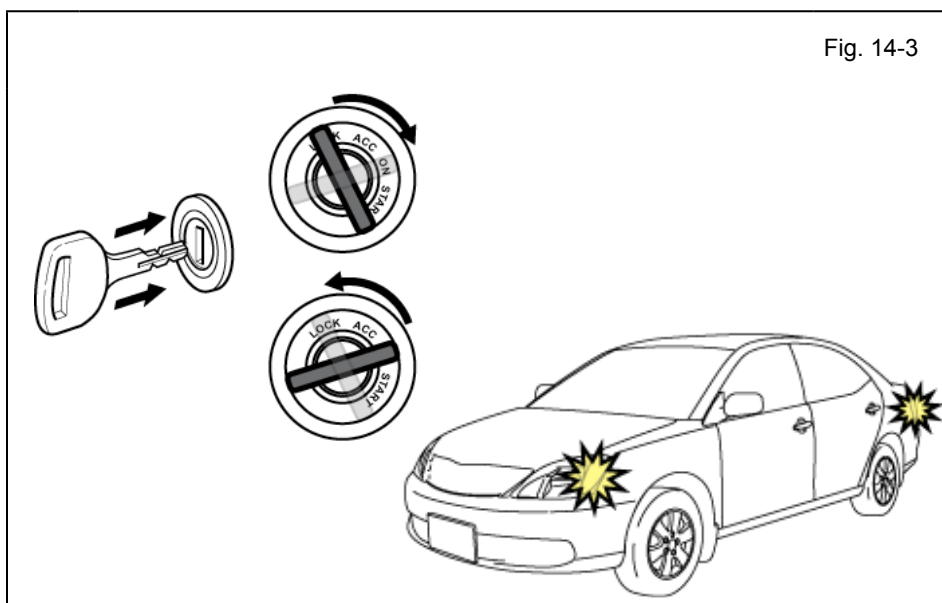
CAUTION: Do not touch the Positive Terminal.



- Locate the 1P RES Diagnostic Connectors in the Passenger's Side Cowl Area and connect them.

NOTE: Once connected you will have 10 minutes to complete this section, steps d–x.

- Close all doors.



- Insert the key into the Ignition.
- Turn it from "OFF" to "ON" 5 times.

LOOK: For the Hazard Lights to flash Once.

- Turn the key to the "OFF" position.

Fig. 14-4



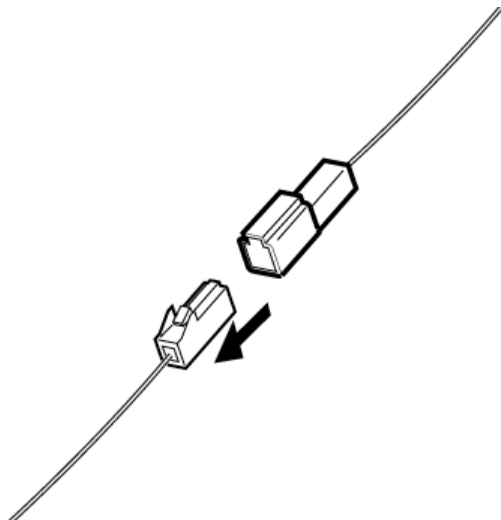
10 Seconds



- h) Start the Engine.
- i) After 10 seconds stop the Engine.

LOOK: For the Hazard Lights to flash Once.

Fig. 14-5

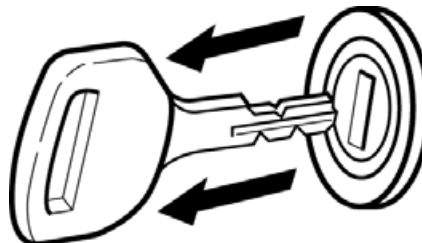


IF THIS PROCEDURE FAILED

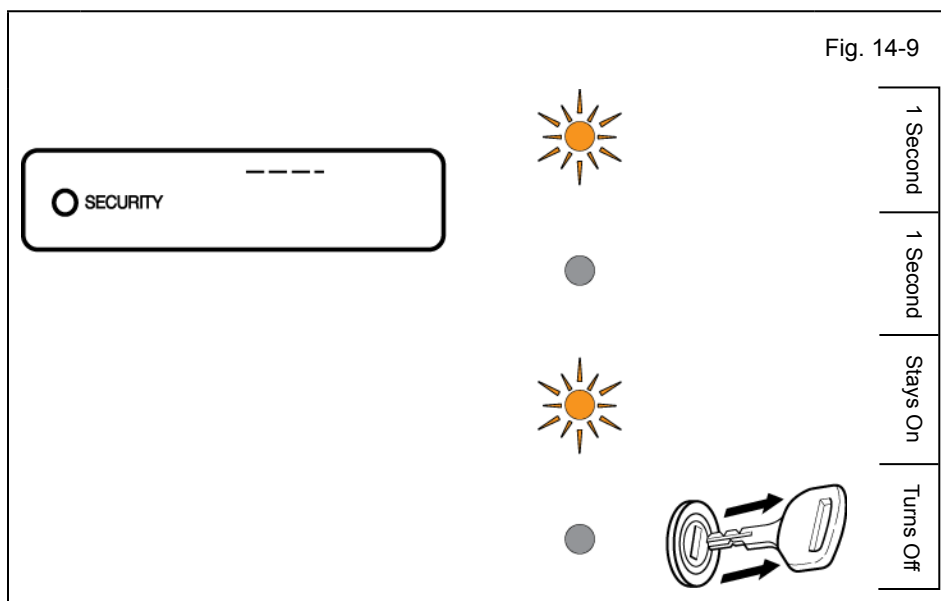
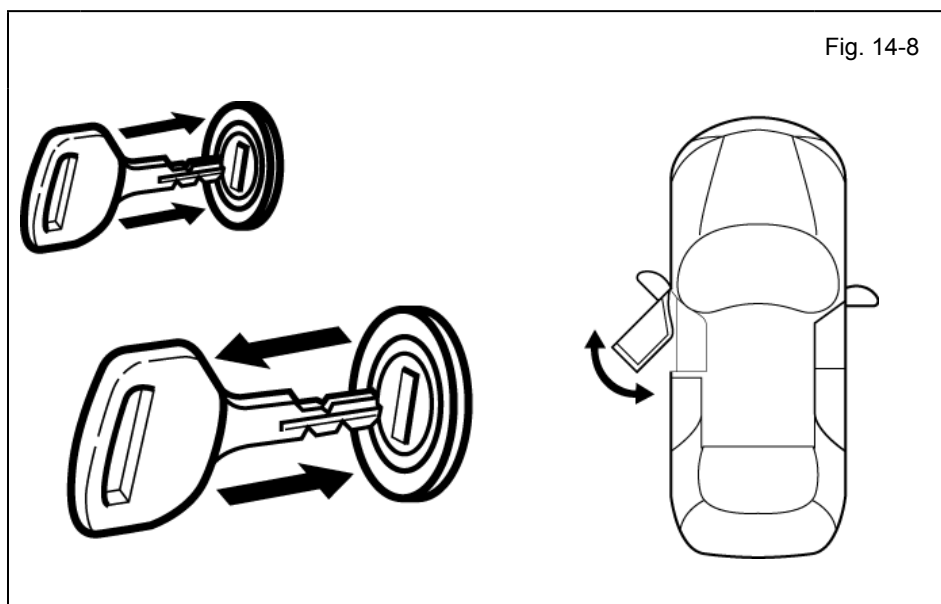
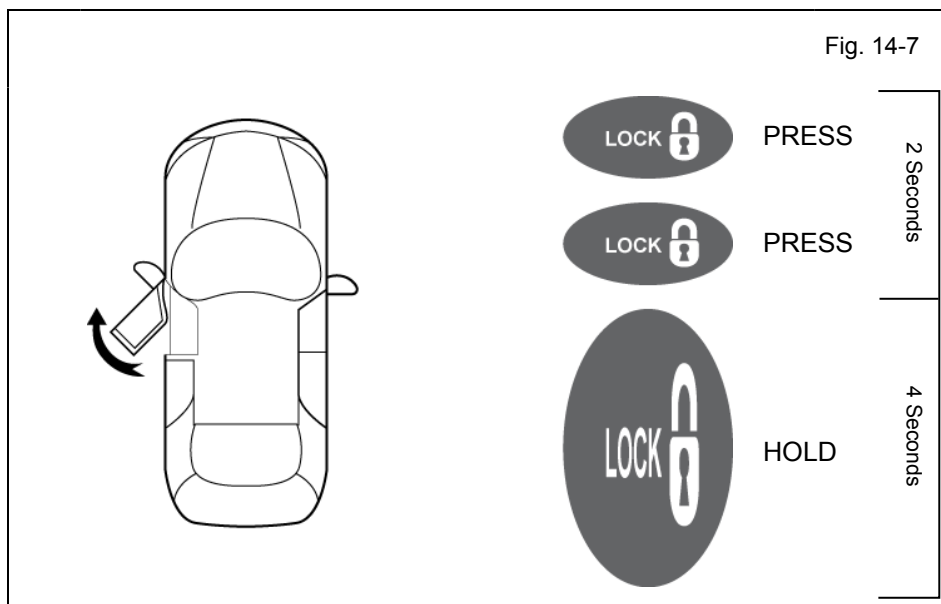
The Hazard Lights flash Twice.

- Disconnect the V4 Harness's 1P RES Diagnostic Connectors.
- Start again from step c.

Fig. 14-6



- j) Turn the key to the "ON" position and back to the "OFF" position.
- k) Remove the key from the Ignition.



- l) Open the Driver's Door.
- m) Using the Remote press the Lock Button twice within 2 Seconds.
- n) Press and hold the Lock Button for 4 Seconds.

- o) Insert the Key into the Ignition.
- p) Remove and Insert the Key 6 times.
- q) Close the Driver's Door.
- r) Open and Close the Door 7 times, ending in the closed position.
 - This step needs to be completed in 35 seconds.

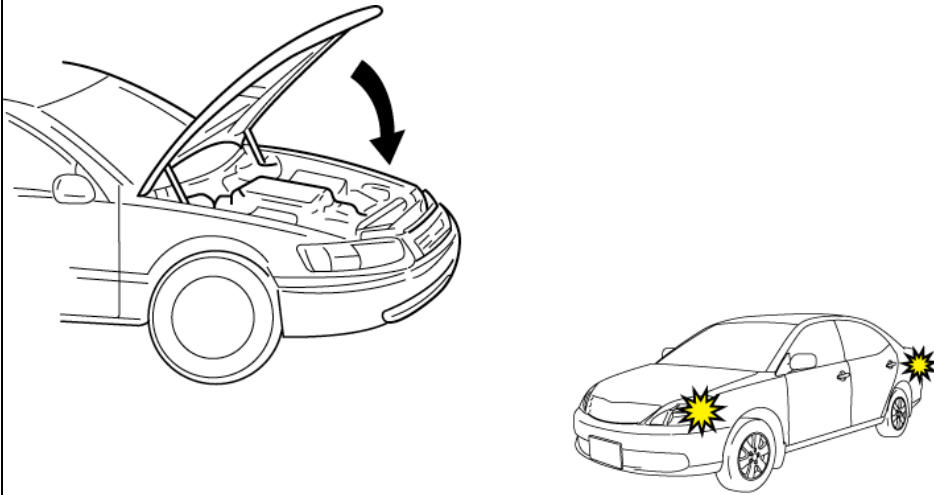
- s) Look for the Immobilizer LED to turn on for 1 Second and go off.
- t) After 1 Second look for the Immobilizer LED to come back on and stay on.
- u) Remove the key from the Ignition.
- v) Look for the Immobilizer LED to turn off.

IF THIS PROCEDURE FAILED

The Immobilizer LED does not Light properly.

- Disconnect the V4 Harness's 1P RES Diagnostic Connectors.
- Start again from step c.

Fig. 14-10



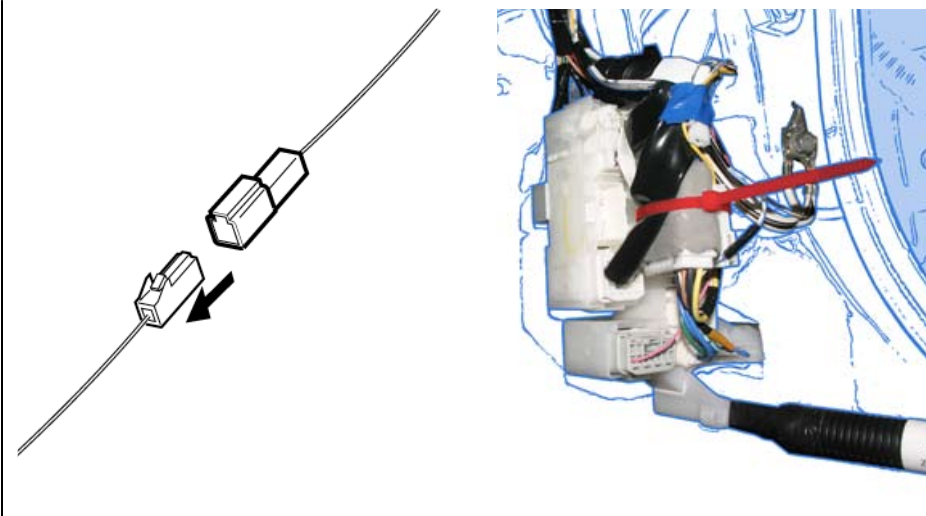
- w) Exit the vehicle.
- x) Close the Hood.
- y) Look for the Hazards to flash twice.

IF THIS PROCEDURE FAILED

The Hazard Lights flash Three Times.

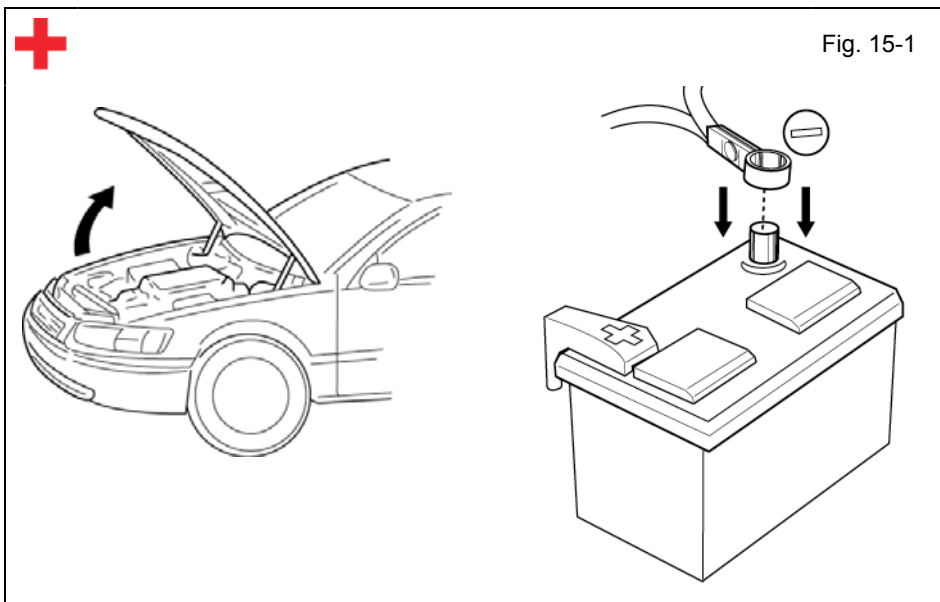
- Disconnect the V4 Harness's 1P RES Diagnostic Connectors.
- Start again from step c.

Fig. 14-11



- z) After a successful Registration Disconnect the 1P RES Diagnostic Connectors.
- aa) Using Electrical Tape secure the Female Connector and Harness to the Vehicle Harness.

Go to Section 16 (Page 42)



15) Phase 4 Registration

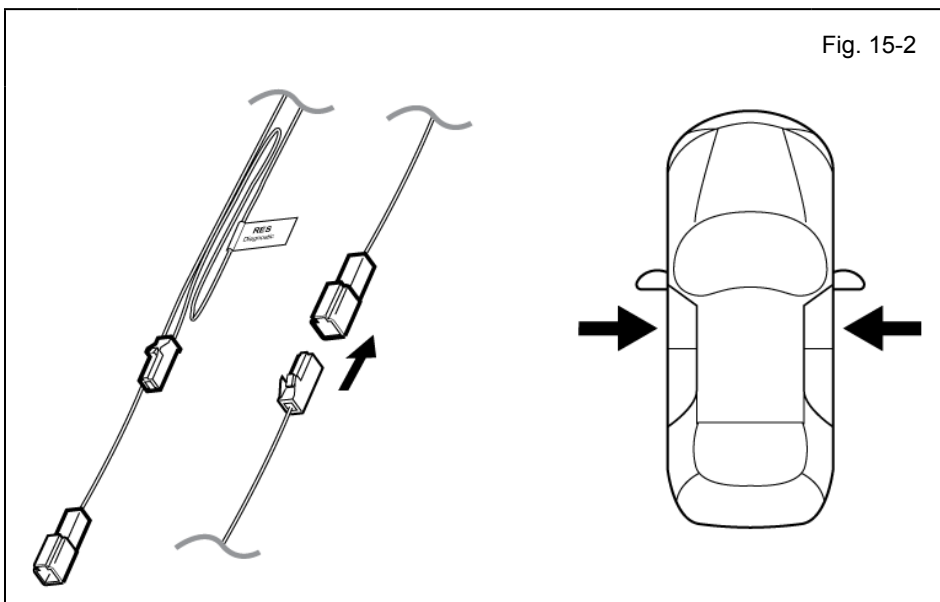


VERIFY: The Vehicle's Key has "G" engraved on it. (see page 33)

- Open the Hood.
- Temporarily reconnect the Negative Battery Cable.



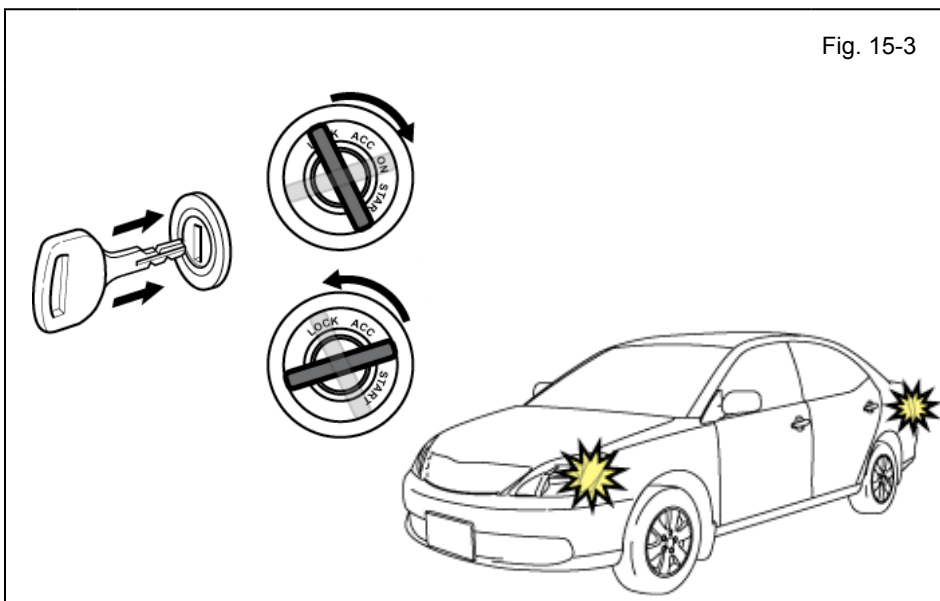
CAUTION: Do not touch the Positive Terminal.



- Locate the 1P RES Diagnostic Connectors in the Passenger's Side Cowl Area and connect them.

NOTE: Once connected you will have 10 minutes to complete this section, steps d–x.

- Close all Doors.



- Insert the key into the Ignition.
- Turn it from "OFF" to "ON" 5 times.

LOOK: For the Hazard Lights to flash Once.

- Turn the key to the "OFF" position.

Fig. 15-4



10 Seconds



- h) Start the Engine.
- i) After 10 seconds stop the Engine.

LOOK: For the Hazard Lights to flash Once.

IF THIS PROCEDURE FAILED

The Hazard Lights flash Twice.

- Disconnect the V4 Harness's 1P RES Diagnostic Connectors.
- Start again from step c.

Fig. 15-5

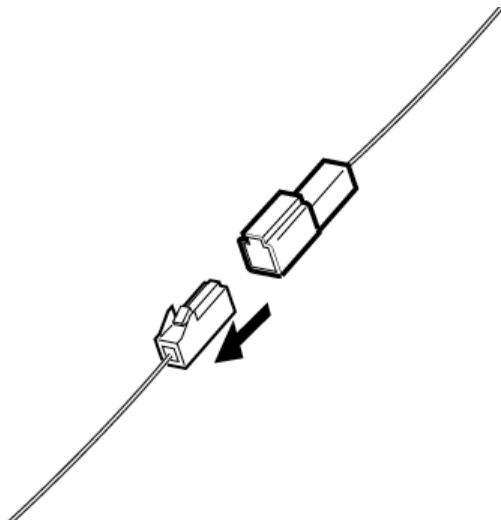
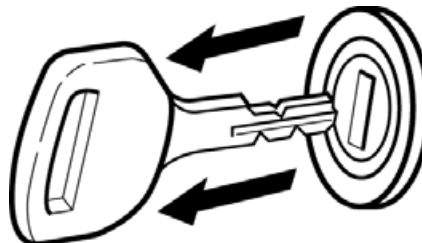
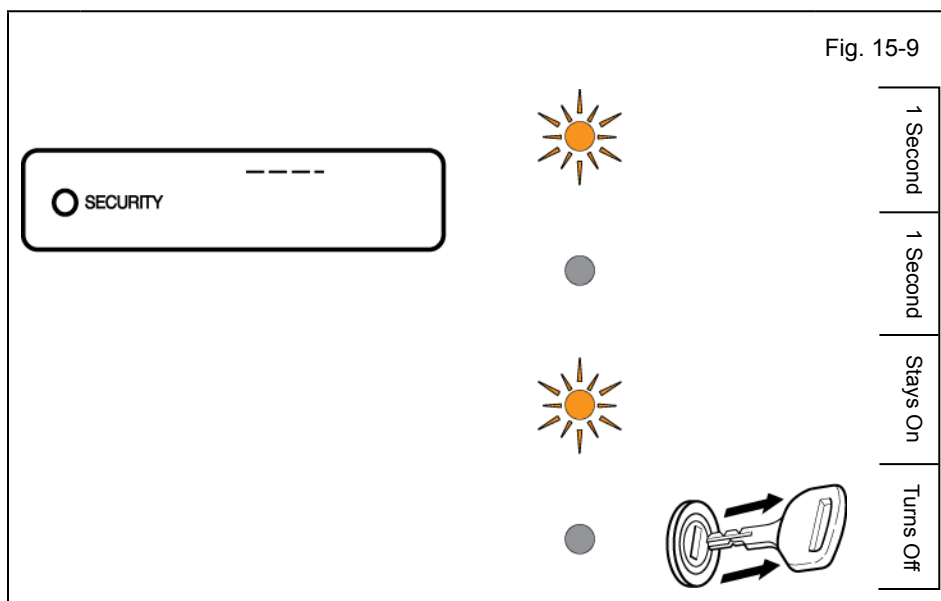
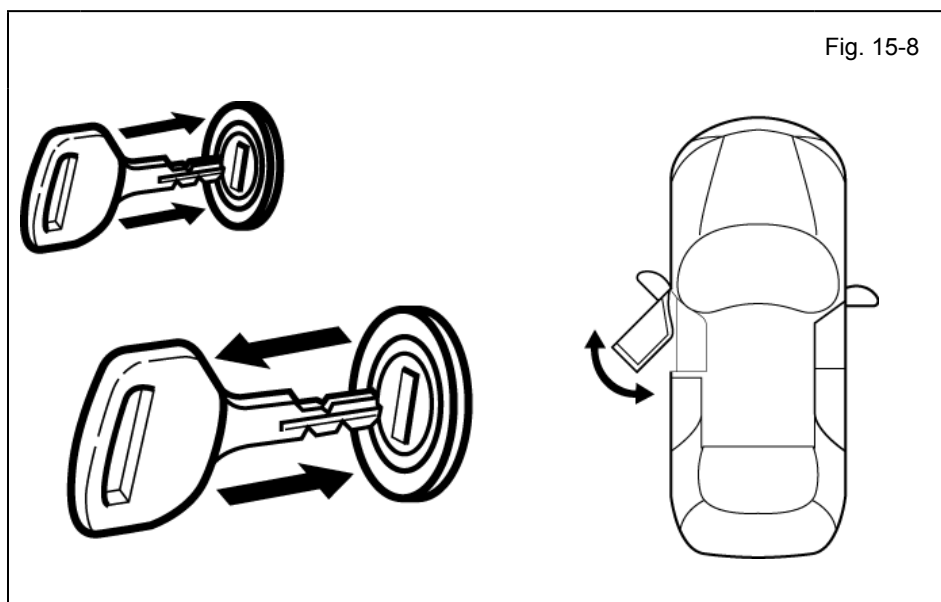
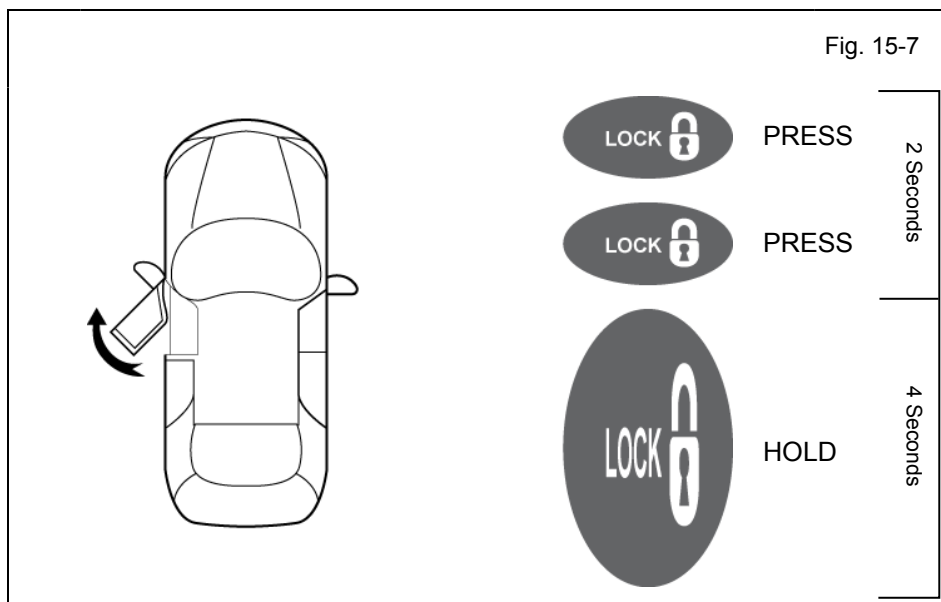


Fig. 15-6



- j) Turn the key to the "ON" position and back to the "OFF" position.
- k) Remove the key from the Ignition.



- l) Open the Driver's Door.
- m) Using the Remote press the Lock Button twice within 2 Seconds.
- n) Press and hold the Lock Button for 4 Seconds.

- o) Insert the Key into the Ignition.
- p) Remove and Insert the Key 6 times.
- q) Turn the Key to the "ON" position.
- r) Close the Driver's Door.
- s) Open and Close the Door 7 times, ending in the closed position.
 - This step needs to be completed in 35 seconds.

LOOK: for the Immobilizer LED to turn on for 1 Second and go off.

- t) After 1 Second look for the Immobilizer LED to come back on and stay on.
- u) Remove the key from the Ignition.

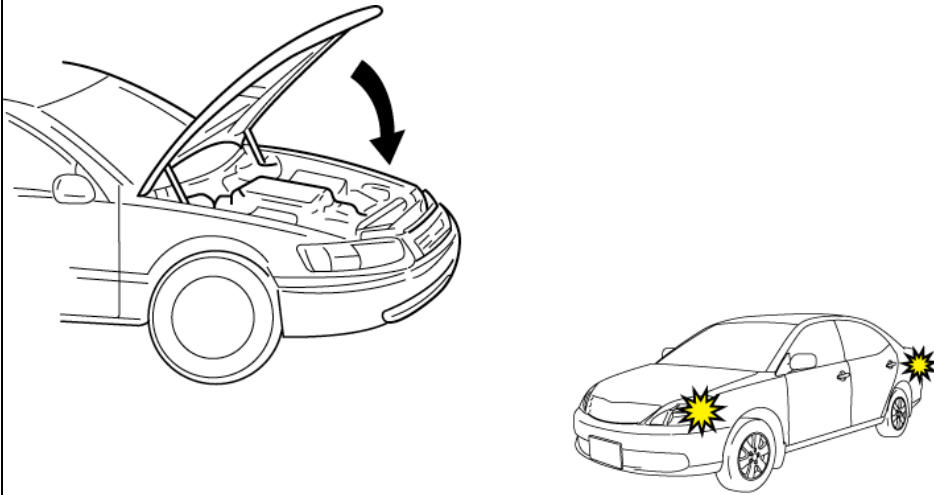
LOOK: for the Immobilizer LED to turn off.

IF THIS PROCEDURE FAILED

The Immobilizer LED does not Light properly.

- Disconnect the V4 Harness's 1P RES Diagnostic Connectors.
- Start again from step c.

Fig. 15-10



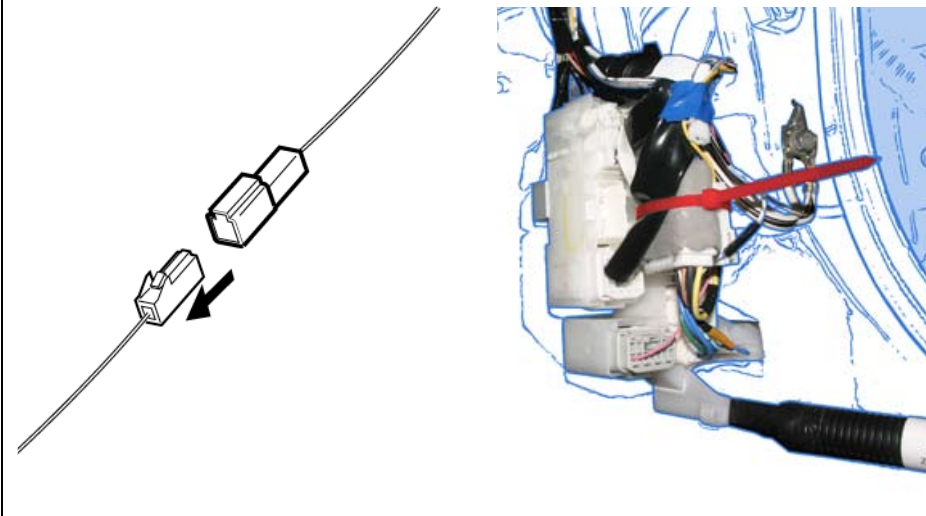
- v) Exit the vehicle.
- w) Close the Hood.
- x) Look for the Hazards to flash twice.

IF THIS PROCEDURE FAILED

The Hazard Lights flash Three Times.

- Disconnect the V4 Harness's 1P RES Diagnostic Connectors.
 - Start again from step c.
-
- y) After a successful Registration Disconnect the 1P RES Diagnostic Connectors.
 - z) Using Electrical Tape secure the Female Connector and Harness to the Vehicle Harness.

Fig. 15-11



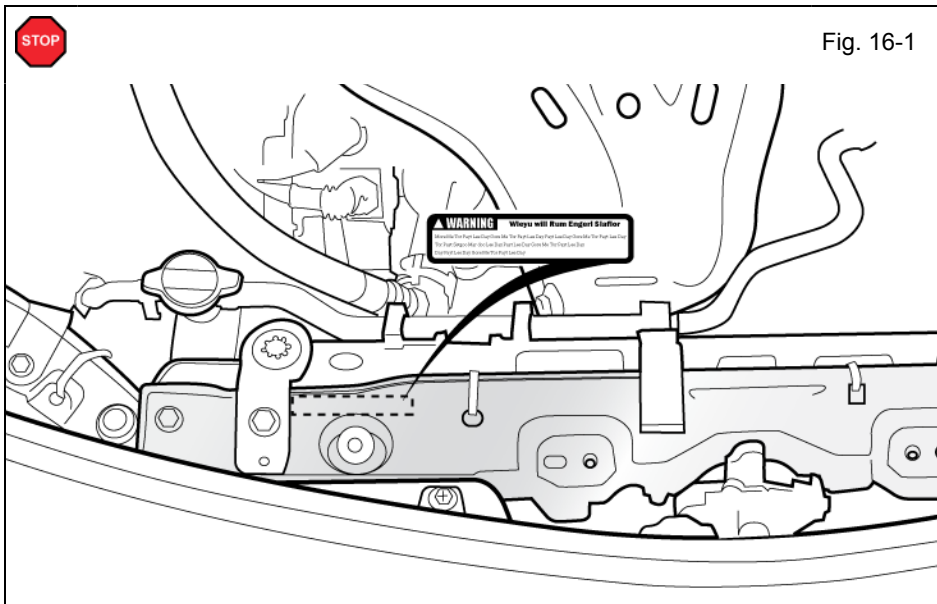


Fig. 16-1

16) Tags and Labels.

- For US Vehicles us the English Tags and Labels, and discard the Spanish Tags and Labels.
 - For Mexico Vehicles us the Spanish Tags and Labels, and discard the English Tags and Labels.
- a) Using VDC approved cleaner and cleaning method, clean the area indicated in the Engine Compartment.
 - b) Attach the Engine Room Warning Label as shown.



CAUTION: Do not touch the adhesive surface.

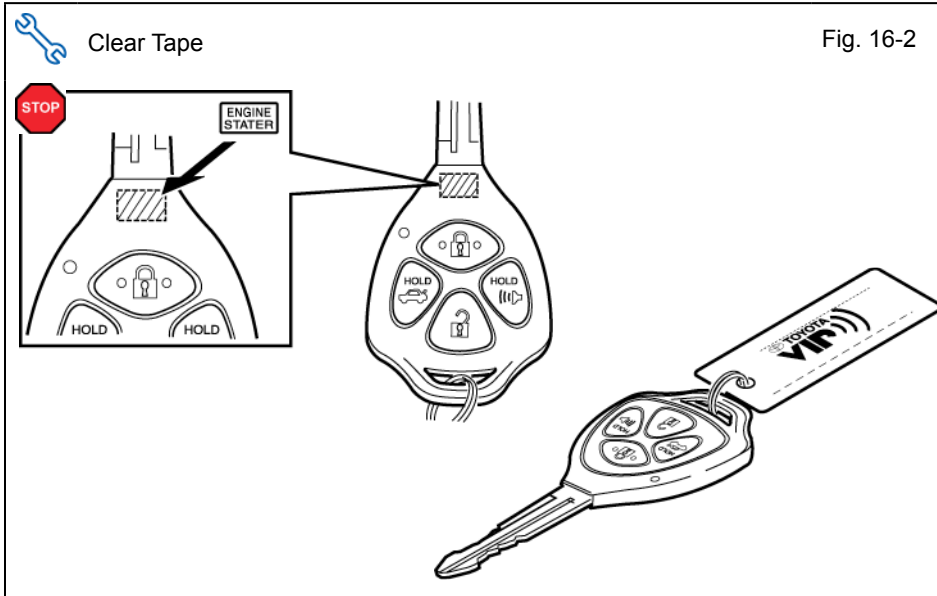


Fig. 16-2

- c) Using VDC approved cleaner and cleaning method, clean the indicated area on the key.
- d) Use a piece of Clear Tape to lift the label off its protective backing.



CAUTION: Do not touch the adhesive surface.

- e) Attach the Key Label as shown.

- f) Attach the Key Tag.

REPEAT: steps c–f with the other Key.

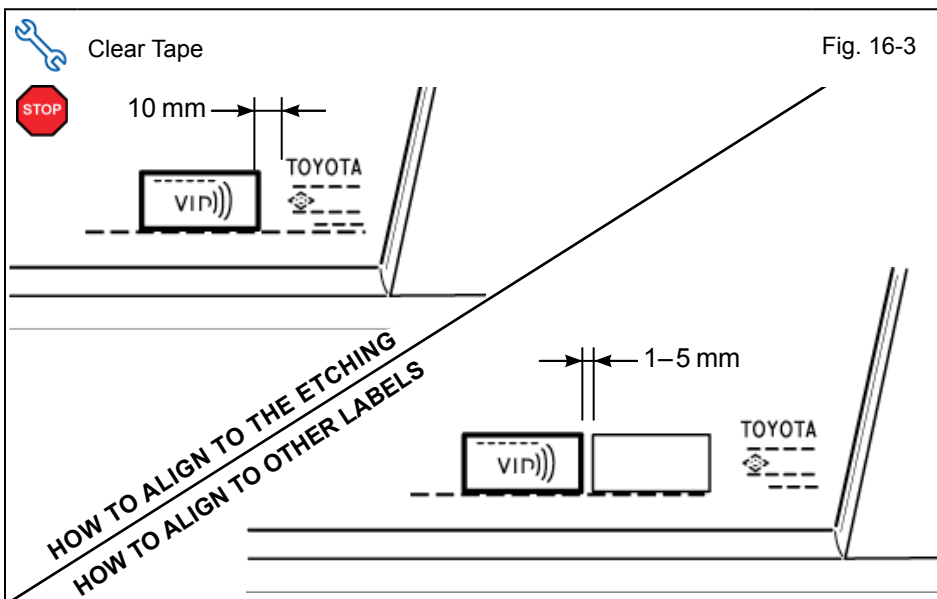


Fig. 16-3

- g) Use Household Glass Cleaner to clean the inside of the Front Door Windows.
- h) Use a piece of Clear Tape to lift the Label from the protective backing.



CAUTION: Do not touch the adhesive surface.

- i) Attach the Label as shown.



NOTE: Make sure to Align according to Etching or Other Label.

REPEAT: steps g–i with the other Window.

Fig. 17-1

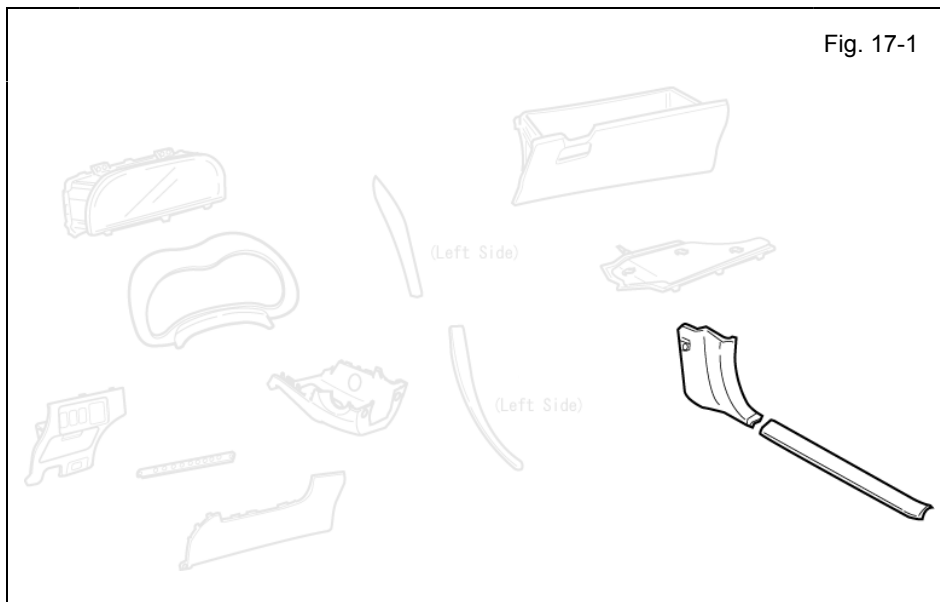
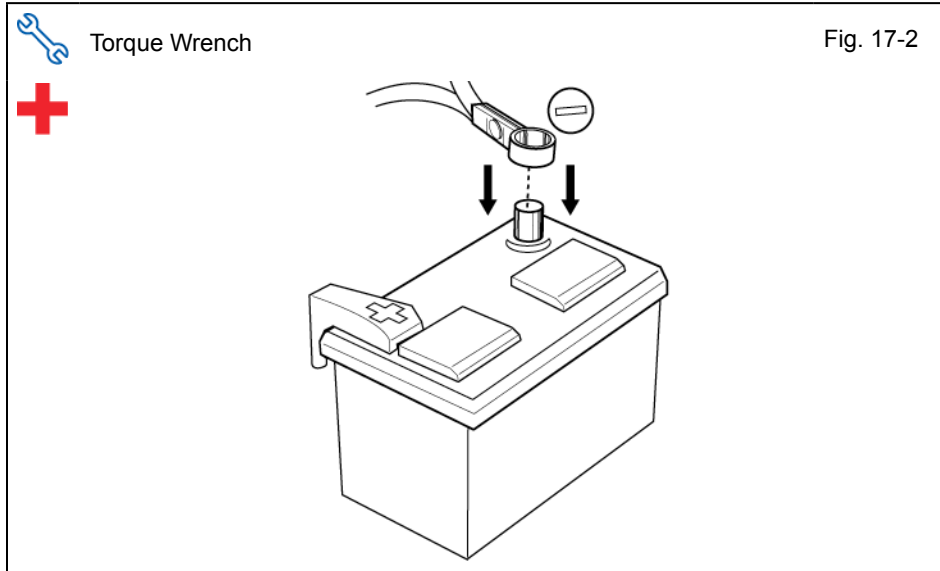


Fig. 17-2



17) Complete the Installation.

- a) Finish reassembling the Vehicle.



VERIFY: That panels fit together properly, with no uneven gaps.



VERIFY: That all Connectors are plugged in.

- b) Position the Negative Battery Cable at the original factory position.

- Tighten the Nut to 36 in•lbf (4.07 N•m)



CAUTION: Do not touch the positive terminal.

- c) Clean up and Remove trash.
d) Sealed in its protective bag, place the Owner's Manual in the Glovebox.

- e) Reset the Power Windows.

- Turn the ignition "ON."
- Lower the Windows halfway.
- Pull up on the Power Window Switches until the windows close.
- Continue to hold up on the switches for a minimum of 1 Second.

- f) Reset the Moon Roof (if equipped).

- Turn the ignition "ON."
- Open the Moon Roof halfway.
- Push and hold the Moon Roof Switch to close until the Moon Roof closes.
- Continue to hold the switch for a minimum of 1 Second.

Accessory Function Checks

Close the hood, enter the vehicle and close all doors. Place the shift lever in the “P” (Park) position, set the parking brake and make sure the Vehicle is off.

Perform		Look For
1	Press the remote control's lock button twice within 2 seconds, then press and hold the lock button for 3 seconds.	The hazard lights flash after 3 seconds. The engine starts. The hazard lights flash repeatedly for 20 seconds.
2	With the engine running, pull the hood release handle. NOTE: Some Vehicles may require you to exit the Vehicle and pull up on the Hood.	The engine stops. The hazard lights flash once. The security alarm triggers. (if equipped)
3	Move the shift lever out of “P” (Park). Attempt to start the Vehicle using the remote.	The engine does not start.








Vehicle Function Checks

Function	Function
----------	----------

Enter the Vehicle

<input type="checkbox"/> Dome/Courtesy Lights	<input type="checkbox"/> Steering Wheel Column Adjusts Without Interference
<input type="checkbox"/> Horn	

Start the Vehicle

<input type="checkbox"/> Starter	<input type="checkbox"/> Gauges
<input type="checkbox"/> Panel/Switch Illumination	<input type="checkbox"/> ABS Light (if equipped) <i>If the warning light remains on, it may indicate a system malfunction.</i> 
<input type="checkbox"/> Lamp Failure Sensor <i>If the warning light remains on, it may indicate a system malfunction.</i> 	<input type="checkbox"/> Track/Skid Control Light (if equipped) <i>If the warning light remains on, it may indicate a system malfunction.</i> 
<input type="checkbox"/> Seat Belt Warning Light <i>If the warning light remains on, it may indicate a system malfunction.</i> 	<input type="checkbox"/> Tire Pressure Monitoring System (TPMS). <i>Prior to TPMS activation and Pre-delivery Service (PDS) of the Vehicle the TPMS light will blink when IG is turned on.</i> <i>After TPMS activation and PDS of the Vehicle the TPMS light will illuminate for a few seconds and go off when IG is turned on.</i> 
<input type="checkbox"/> Air Bag Warning Light <i>If the warning light remains on, it may indicate a system malfunction.</i> 	
<input type="checkbox"/> Cruise Control Light (if equipped) 	

Using a Mirror or Assistant check the following.

<input type="checkbox"/> Trunk/Tailgate/Bed Lights (if equipped)	<input type="checkbox"/> Tail Lights
<input type="checkbox"/> Brake Lights	<input type="checkbox"/> Daytime Running Lights (if equipped)
<input type="checkbox"/> Backup Lights	<input type="checkbox"/> Marker Lights
<input type="checkbox"/> Clearance Sonar (if equipped)	

Stop the Engine, Place the Vehicle's IG in the ON position.

<input type="checkbox"/> Hazard Lights	<input type="checkbox"/> Turn Signal Lights
<input type="checkbox"/> Head Light	<input type="checkbox"/> Fog Lights (if equipped)
<input type="checkbox"/> High Beams	<input type="checkbox"/> Accessory Controls/Illumination (if equipped)
<input type="checkbox"/> Power Side Mirrors (if equipped)	<input type="checkbox"/> Convenience Memory Settings (if equipped)
<input type="checkbox"/> Power Sliding Door (if equipped)	<input type="checkbox"/> Rear Sunshade (if equipped)

Function		Function	
<input type="checkbox"/>	Front Wiper/Washer	<input type="checkbox"/>	Rear Wiper/Washer (if equipped)
<input type="checkbox"/>	Power Sun/Moon Roof (if equipped)	<input type="checkbox"/>	Rollover Side Curtain Air Bag Switch (RSCA) (if equipped)
<input type="checkbox"/>	Clock (if equipped)	<input type="checkbox"/>	Navigation System (if equipped)
<input type="checkbox"/>	Audio/Video (if equipped)	<input type="checkbox"/>	HVAC
<input type="checkbox"/>	Steering Wheel Audio Control (if equipped)	<input type="checkbox"/>	Rear Window Defogger (if equipped)
<input type="checkbox"/>	Front Windshield Defogger (if equipped)	<input type="checkbox"/>	Accessory Power Socket (if equipped)
<input type="checkbox"/>	Side Mirror Defogger (if equipped)	<input type="checkbox"/>	Heated/Vented Seats (if equipped)
<input type="checkbox"/>	Massage Seats (if equipped)		
<input type="checkbox"/>	Glovebox Light (if equipped)	<input type="checkbox"/>	Passenger Air Bag Switch (if equipped)
<input type="checkbox"/>	Power Locks (if equipped)	<input type="checkbox"/>	Power Windows (if equipped)
<input type="checkbox"/>	Power Seats (if equipped)	<input type="checkbox"/>	Key Sensor Buzzer

Remove the short pin after Function check.

Check with your Port/Dealer to see if this step is necessary.

