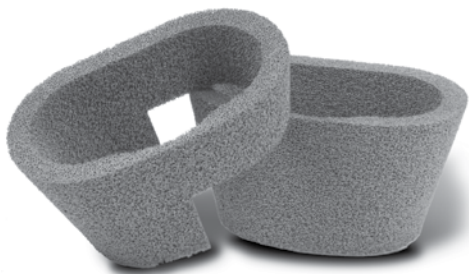




Trabecular Metal™ Tibial Cone Surgical Technique



Provides structural support in areas of bone loss

Zimmer® Trabecular Metal™ Tibial Cone Surgical Technique

Table of Contents

Overview	2
Tibial Preparation	4
Tibial Resection/Cone Preparation	4
Base Plate/Stem Extension Selection and Initial Trialing	5
Final Positioning of Cone in the Tibia	7
Implanting Components	8

Overview

The objective of using *Trabecular Metal Cemented Cone* implants is to achieve stability of the construct within the proximal tibia while allowing the compressive forces to physiologically load the surrounding bone (Fig. 1).

The cone that is selected must offer the ability to

- Reinforce the inner endoseal tibial cavity while maintaining viable bone
- Allow the stem of the selected *NexGen* tibial base plate and the selected stem extension to be inserted through the cone and positioned into the intramedullary tibial canal
- Allow the entire assembled and seated construct (cone augment tibial base plate/stem extension) to provide appropriate coverage of the proximal tibial surface

Significant tibial bone defects may be located near, or away from the center of the tibia (Fig. 2). Therefore, both full and stepped tibial cones should be considered. Stepped cones may offer an advantage when one compartment of the tibia exhibits significant bone loss, while the opposite compartment has less damage.

Note: These cones are limited to use with NexGen Complete Knee Solution, Legacy® LCCK and Rotating Hinge Knees.



Fig 1

In significant revision situations, positioning of the tibial base plate is often dictated by the interaction of the stem extension (attached to the base plate) and the intramedullary canal. Therefore, use of offset and/or straight stem extensions should be considered during the initial cone selection process. The cone will allow some A/P and M/L freedom of the stem extension, which varies depending upon:

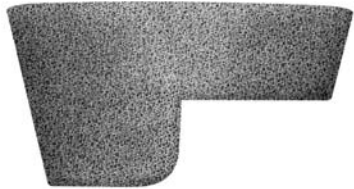
- Size of the cone selected
- Diameter of the stem extension
- Location of the cone relative to the center of the IM canal

The tibia must be prepared for the assembled combination of the tibial base plate, the stem extension and the selected cone augment. Repeated trialing of the various possible combinations help to simultaneously optimize:

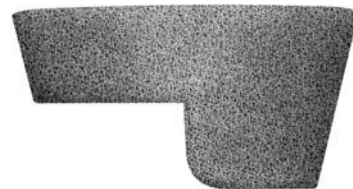
- Fit of the cone in the defect area of the tibial cavity
- Coverage of the tibial surface
- Fit of the stem extension in the canal
- Preservation of good proximal tibial bone

Some compromises will likely be necessary to achieve stability of the entire construct.

Stepped Cone, 30mm/15mm



Stepped Cone, 15mm/30mm



Full Cone

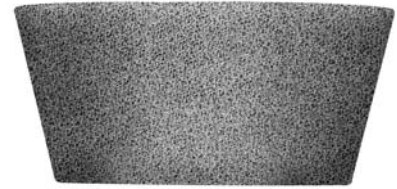


Fig 2

Tibial Preparation

Tibial Resection/Cone Preparation

Initial Proximal Tibial Resection

Ream the tibia to the appropriate diameter where stability of the reamer is gained. Remove the reamer and replace with the Stem Provisional Adapter to which has been attached a Straight Stem Extension Provisional of the diameter of the last reamer used.

Cut the top of the tibia to the angle recommended for the base plate using the appropriate IM Tibial Boom and appropriate Tibial Cutting Guide. Remove the Tibial Cutting Guides, leaving the reamer protruding from the tibia (Fig. 3).



Fig 3

Initial Cone Selection

Select a Tibial Cone Augment Provisional component that approximates the size and depth of the defect and insert it over the reamer. Inverting the cone augment provisional will best simulate the proximal void that the selected cone will accommodate (Fig. 4). This also will provide an estimate of the A/P and M/L position of the defect, relative to the center of the IM canal.



Fig 4

Base Plate/Stem Extension Selection and Initial Trialing

Stem Extension Provisional Selection

The NexGen system has several choices of stem extension components, in sharp fluted (press-fit) and cemented designs, and in various lengths (Fig. 5). If the defect is central, a straight stem extension may be an optimal choice. An offset stem extension will allow up to 4.5mm translation in any direction and may offer an option when the defect is biased more toward the cortex (usually medial). Additionally, the distal opening of the cone will allow some translation of the stem extension within the cone. The amount of translation varies depending upon the size of cone and the diameter of stem extension selected (Fig. 6).

Note: the NexGen Rotating Hinge Knee tibial base plate will normally require use of a straight stem extension since the stem of the NexGen Rotating Hinge Knee tibial base plate is longer than those of other NexGen tibial base plates.

Tibial Base Plate Provisional Selection

Approximate the “best fit” tibial base plate by using the Provisional Tibial Sizing Plates. Confirm your selection by assembling the selected Stem Extension Provisional to the Provisional Stemmed Tibial Base Plate and defining the suitability of the selection. The ability to achieve proper coverage of the proximal tibia and proper external tibial rotational alignment must be considered (Fig. 7).

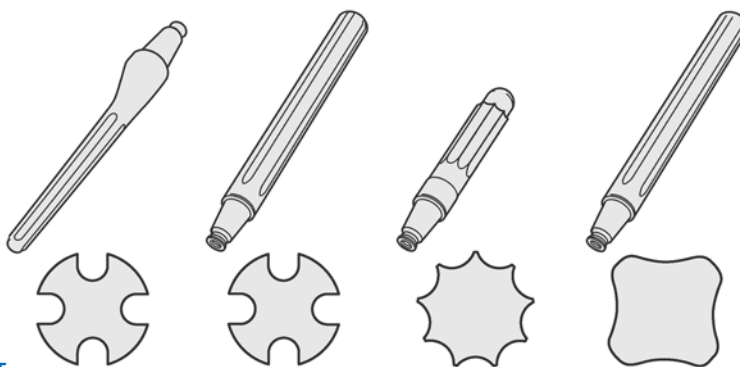


Fig 5

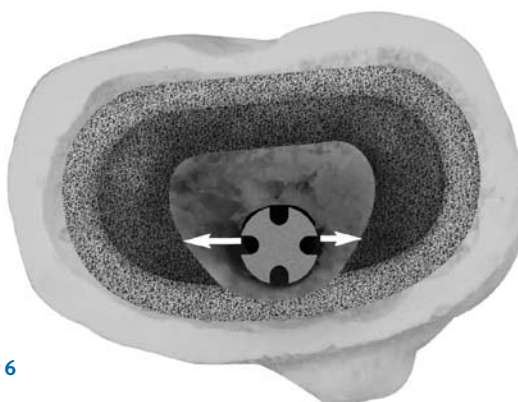


Fig 6



Fig 7

Tibial/Femoral Size Relationships

Since use of Cone implants in the tibia is generally only considered when significant loss of proximal tibial bone has been encountered, the normal tibiofemoral sizing relationships may no longer exist. Frequently the size of the tibia is significantly smaller than the patient's tibia in the index procedure. It may be possible to "size up" the tibia by use of a tapered proximal tibial augment under the base plate. This will move the location of the base plate (and therefore, tibial joint line) proximally while at the same time, allow use of the next size larger tibial component. In the NexGen Knee System, this also allows use of the next size larger femoral component, which has a larger A/P dimension, tightening the Flexion Gap. At a minimum, it must be confirmed that the potential tibial base plate and intended LCKK or Rotating Hinge Knee femoral component selected will match the available articulation surface choices of the implant system (Fig. 8).



Fig 8

Initial Trial Positioning of the Assembly

Insert the Cone Provisional into the void of the tibia (Fig. 9). It is intended to independently position the cone provisional so that the wedge shape can subside to a point where it can carry compressive loads. It should be anticipated that the final seating position of the cone will be below the cut surface of the tibia. Attempt to insert the tibial base plate and stem extension into the IM canal of the tibia. Ascertain if a compromise in one of the above components is necessary to achieve stability while minimizing bone loss and providing appropriate



Fig 9

tibial coverage and orientation. It is important to make the decision to compromise one of the above selected components in favor of optimizing stability of the entire construct. If necessary, repeat initial trialing using different choices of cones, stem extensions, tapered augments and base plate provisional components until it can be ascertained that the entire construct can be properly inserted and oriented.

Note: By design, the cone implant will fit similarly to or slightly tighter than the provisional implant.

Final Positioning of Cone in the Tibia

Tibia Modification to Allow Seating of the Cone

If the cone is to reinforce the tibia, allowing compressive forces to pass through the cone into the tibia, the cone must be in intimate contact with a significant portion of remaining good quality tibial bone. Using a high-speed burr (Fig. 10), remove necessary “high spots” of bone in order to allow the cone provisional to subside and fully seat within the proximal tibia. When the cone is tightly seated, reinstall the intended provisional augments, base plate, and stem extension components, confirming that the provisional stem extension can be inserted into the canal and that the remaining assembly can be properly positioned. Remove the provisional stem and base plate leaving the provisional cone in place.



Fig 10

Filling Voids Outside of the Cone Augment

If voids exist between the outside of the provisional cone augment and the endoseal surface of the tibia (Fig. 11), the surgeon should consider packing grafting material to fill the void. Pack morsalized grafting material around the outside of the cone provisional until maximal stability can be ascertained.

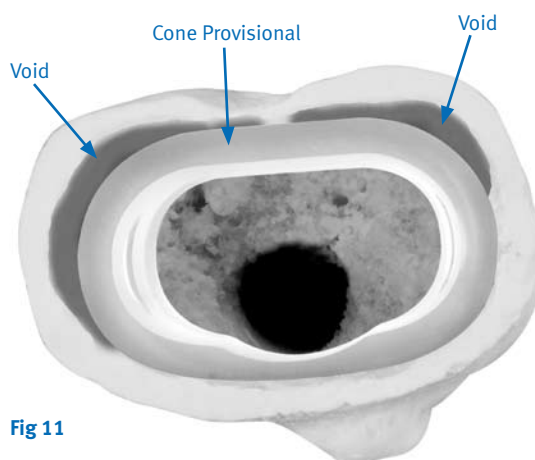


Fig 11

Final Trialing of the Entire Assembly

It is recommended that a last trial of the cone provisional assembly be conducted prior to cementing. If satisfactory, remove the provisional cone augment taking care to not disturb the packed graft mantle around the endosteal surface.

Implanting Components

Inserting the Cone Augment Implant

Apply bone cement to the outside periphery of the Cone implant and insert into the prepared tibial void (Fig. 12). It should be noted that although the cone augment provisional and implant are the same dimension, the surface of the cone implant is porous and therefore a higher friction fit than the provisional component. The cone impactor can be used to guide the cone into position using gentle mallet taps (Fig. 13). Remove excess bone cement.

Note: If excessive force is used to seat the implant, tibial fracture may occur. Additional cancellous bone should be removed to allow implant insertion.

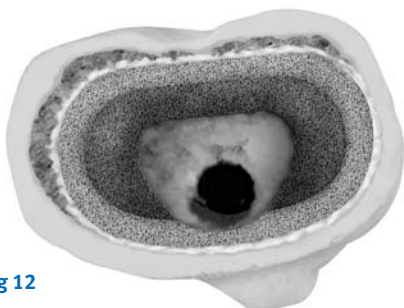


Fig 12



Fig 13

Cementing the Tibial Base Plate and Stem Implants

Properly assemble the stem extension and tibial base plate implants in the proper orientation decided from previous trailing. Form bone cement on the bottom of the tibial base plate so that it will fill the interior of the cone implant and also fills the internal cavity of the tibia (Fig. 14). Insert the base plate assembly into the cone augment. Verify correct rotational alignment and impact the implant assembly into position and remove excess bone cement (Fig. 15).



Fig 14



Fig 15

Trabecular Metal Cone Implants

Product No.	Description
00-5450-01	Full Implant Kit
00-5450-048-01	TM Cone Size 48-15mm Full, Extra Small
00-5450-052-01	TM Cone Size 52-15mm Full, Small
00-5450-059-01	TM Cone Size 59-15mm Full, Medium
00-5450-059-05	TM Cone Size 59-30mm Full, Medium
00-5450-059-20	TM Cone Size 59 Stepped, Medium, Height 30mm/15mm
00-5450-059-21	TM Cone Size 59 Stepped, Medium, Height 15mm/30mm
00-5450-067-01	TM Cone Size 67-15mm Full, Large
00-5450-067-05	TM Cone Size 67-30mm Full, Large
00-5450-067-20	TM Cone Size 67 Stepped, Large, Height 30mm/15mm
00-5450-067-21	TM Cone Size 67 Stepped, Large, Height 15mm/30mm



Trabecular Metal Cone Provisionals and Instruments

Product No.	Description
00-5979-011	Full Instrument Provisional Kit
00-5451-048-01	TM Cone Prov Size 48-15mm Full, Extra Small
00-5451-052-01	TM Cone Prov Size 52-15mm Full, Small
00-5451-059-01	TM Cone Prov Size 59-15mm Full, Medium
00-5451-059-05	TM Cone Prov Size 59-30mm Full, Medium
00-5451-059-20	TM Cone Prov Size 59 Stepped, Medium, Height 30mm/15mm
00-5451-059-21	TM Cone Prov Size 59 Stepped, Medium, Height 15mm/30mm
00-5451-067-01	TM Cone Prov Size 67-15mm Full, Large
00-5451-067-05	TM Cone Prov Size 67-30mm Full, Large
00-5451-067-20	TM Cone Prov Size 67 Stepped, Large, Height 30mm/15mm
00-5451-067-21	TM Cone Prov Size 67 Stepped, Large, Height 15mm/30mm
00-5451-048-00	TM Cone Impactor, Size Extra Small
00-5451-052-00	TM Cone Impactor, Size Small
00-5451-059-00	TM Cone Impactor, Size Medium
00-5451-067-00	TM Cone Impactor, Size Large
00-5451-001-00	Provisional Cone Removal Tool
00-5451-002-00	Impactor Handle (Fits all size Impactors)
00-5451-095-00	Case

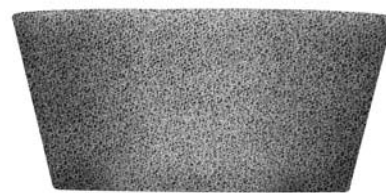
Stepped Cone, 30mm/15mm



Stepped Cone, 15mm/30mm



Full Cone



Please refer to package insert for complete product information, including product information, including contraindications, warnings, precautions, and adverse effects.

Contact your Zimmer representative or visit us at www.zimmer.com