



TRACE and COPY WORKSHEETS

by Beatrice Wilder

Product of Australia

CONTENTS

Worksheet 1: Whole Notes and half Notes

Worksheet 2: Quarter Notes and Eighth Notes

Worksheet 3: Notes With Flags

Worksheet 4: Joined Notes

Worksheet 5: Rests With Flags

Worksheet 6: More Rests

Worksheet 7: Sharps, Flats & Naturals

Worksheet 8: Bass Clef

Worksheet 9: Treble Clef

Worksheet 10: Brace, Bar Lines & Repeat Signs

Worksheet 11: Other Signs

Worksheet 12: A Little Revision

Worksheet 13: Information

Copyright © Beatrice Wilder 2011
Published in 2011 by **Music Fun**

P.O. Box 342 Katoomba NSW 2780
19 Millyard Lane Katoomba 2780

Phone: (02) 4782 3073

Email: info@musicfun.net.au

Web: www.musicfun.net.au

Terms of use 2019

Except as permitted by the copyright law applicable to you, you may not reproduce or communicate any of the content on this website, including files downloadable from this website, without the permission of the copyright owner.

The Australian Copyright Act allows certain uses of content from the internet without the copyright owner's permission. This includes uses by educational institutions and by Commonwealth and State governments, provided fair compensation is paid. For more information, see www.copyright.com.au and www.copyright.org.au.

The owners of copyright in the content on this website may receive compensation for the use of their content by educational institutions and governments, including from licensing schemes managed by Copyright Agency.

We may change these terms of use from time to time. Check before re-using any content from this website.



TRACE and COPY

Worksheet 1

Name

● Semibreves and Minims



SEMIBREVES are also called WHOLE NOTES.

Trace these six semibreves. Three are on lines and three are in spaces.

MINIMS are also called HALF NOTES.

Trace these six minims.

A musical staff with five lines. The first three semibreves are on the top line, middle line, and bottom line. The last three are in the top, middle, and bottom spaces. The minims are on the top line, middle line, and bottom line, with stems pointing up or down.

Trace each WHOLE NOTE and copy another one exactly the same right next to it.

Trace each HALF NOTE and copy another next to it. Make sure the stem goes on the same side as the one you copied.

A musical staff with five lines. The first three whole notes are on the top line, middle line, and bottom line. The last three half notes are on the top line, middle line, and bottom line, with stems pointing up or down.

Draw two semibreves in spaces.

Draw a minim in the bottom space and a minim in the top space.

Draw two whole notes on lines.

Draw two half notes on lines.



TRACE and COPY

Worksheet 2

Name

Crotchets and Quavers



CROTCHETS are also called QUARTER NOTES
Crotchets look like minims that are coloured in black.
Trace these notes and turn them into crotchets.

QUAVERS are also called EIGHTH NOTES
Quavers are like crotchets with little flags.
Trace these notes and turn them into quavers.

Quaver stems may go up or down but their flags always turn to the right. Trace these quavers and draw an exact copy right next to each one.
Remember: QUAVERS and EIGHTH NOTES are exactly the same thing. CROTCHETS and QUARTER NOTES are the same thing, too.

Turn these into quarter notes

Turn these into eighth notes

Draw two crotchets in spaces

Draw two quavers on lines



TRACE and COPY

Worksheet 3

Name

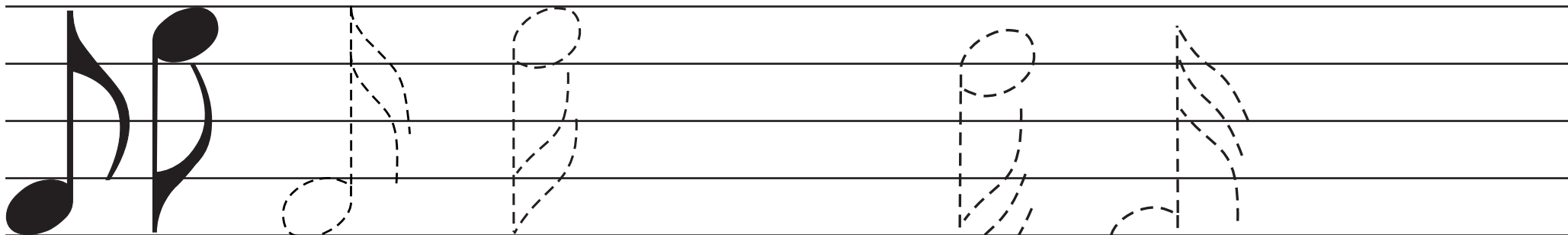
Notes with Flags



Quavers or eighth notes have one flag.

Semiquavers or sixteenth notes have two flags. Trace and colour the semiquavers. Copy one semiquaver

Demisemiquavers have three flags. Trace and colour the demisemiquavers. Copy one demisemiquaver.

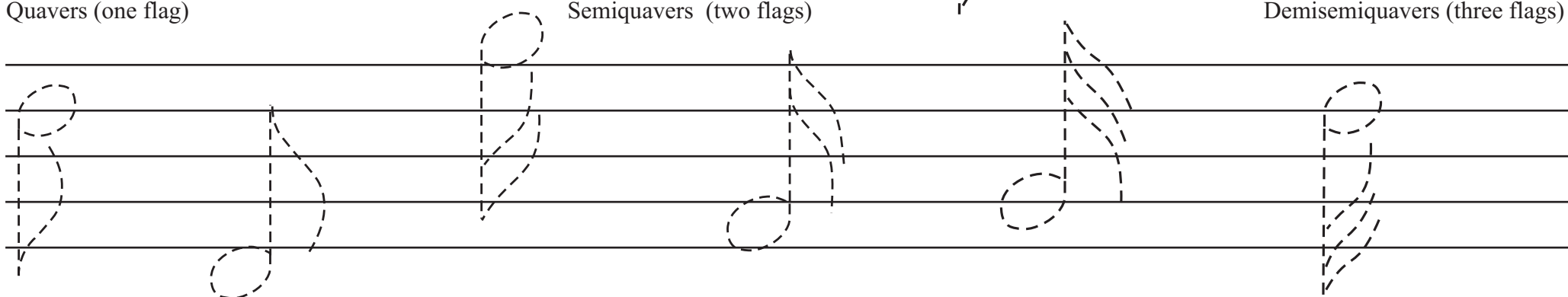


Trace these notes and draw an exact copy next to each one.

Quavers (one flag)

Semiquavers (two flags)

Demisemiquavers (three flags)



Draw two quavers, one on a line and one in a space.

Draw a semiquaver in a space and one on a line.

Draw a demisemiquaver on a line and one in a space.



TRACE and COPY

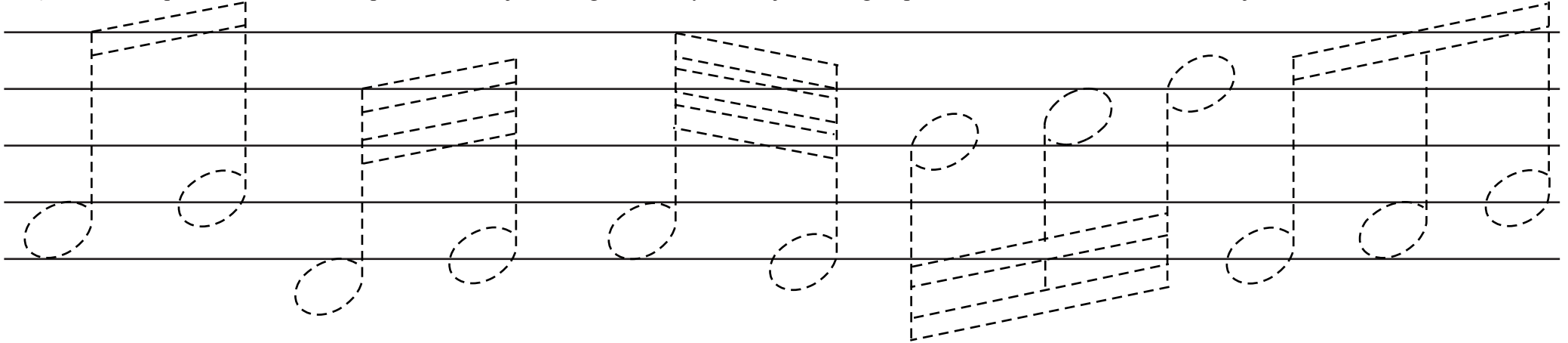
Worksheet 4

Name

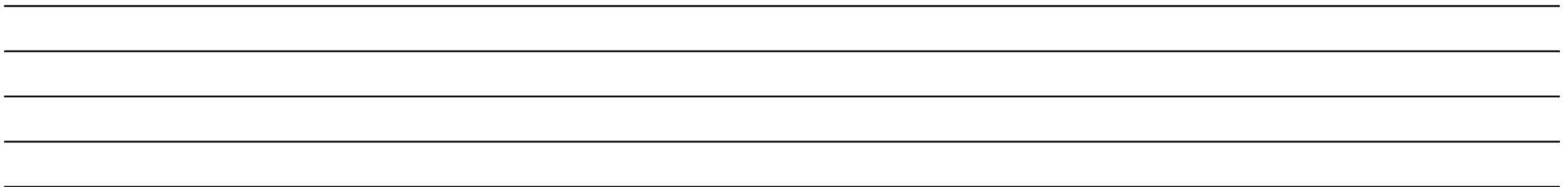


Joined Notes

Quavers, semiquavers and demisemiquavers can be joined together. They can be joined in groups of two or more notes. Trace these joined notes and colour them black.



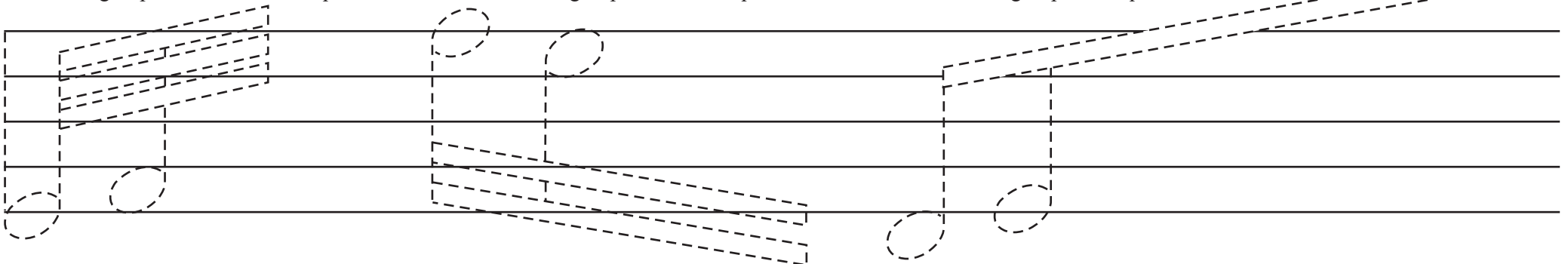
Copy the above quavers, semiquavers and demisemiquavers exactly as they are onto the stave below.



Make a group of three demisemiquavers.

Turn this into a group of four semiquavers.

Let's make a group of six quavers.





TRACE and COPY

Worksheet 5

Name

Rests with Flags



All notes have matching rests. Notes with one, two or three flags have rests with the same number of flags. Trace and colour in the notes with their matching rests. Copy each rest.

Trace and colour in two quaver rests and draw two more.

Do the same with the semiquaver rests.

And the same with the demisemiquaver rests.

Draw a matching rest for each of the following notes.



TRACE and COPY

Worksheet 6

Name

More Rests



A semibreve rest looks like a heavy box under the line.
Trace and colour in the semibreve rest and copy one more.

A minim rest looks like a light box on top of the line.
Trace and colour in the minim rest and copy two more.

A crotchet rest is a bit more difficult..
Trace and colour these three crotchet rests..

Trace and colour the first crotchet rest.

The next four crotchet rests have bits missing. Add the missing parts.

Now trace and copy a crotchet rest.

And a minim rest.

Trace these notes and draw the correct rests next to each one.

Trace one more crotchet rest and copy it.



TRACE and COPY

Worksheet 7

Name

Sharps, Flats and Naturals

Trace the sharp on the line and the sharp in the space and copy each one twice. Do the same with the flats.

And the same with the natural signs.

Sharps, flats and naturals must go on the same line or in the same space as the note that they affect. Trace the partners below and copy them exactly as they are.

Trace the crotchets and draw a sharps next to them.

Trace the minims and draw a flats next to them.

Trace the quavers and draw a naturals next to them.



TRACE and COPY

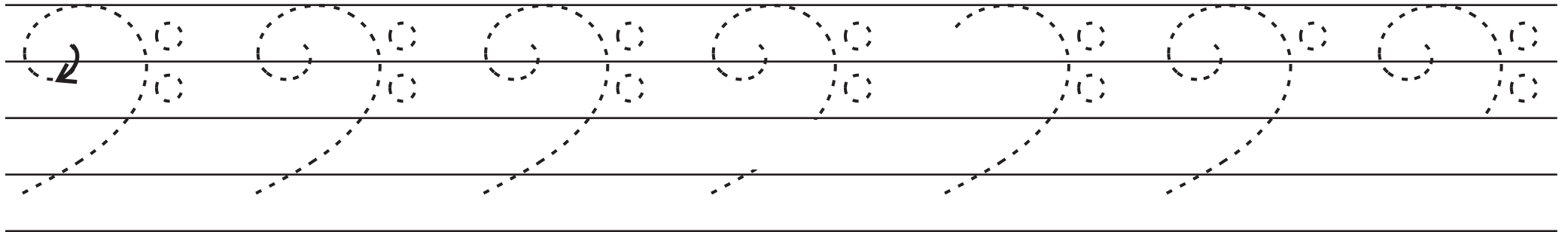
Worksheet 8

Name

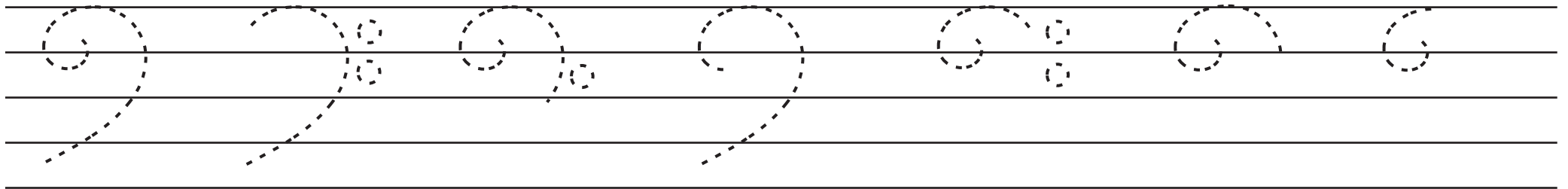
Bass Clef

Trace and colour these BASS CLEFS. Remember to include the DOTS.



These bass clefs have bits missing. Complete them and then trace and colour them.



These bass clefs have even more bits missing. Complete them and then trace and colour them.



Now trace a complete bass clef and see if you can draw one of your own . . . Let's try tracing again and draw another one by yourself.



TRACE and COPY

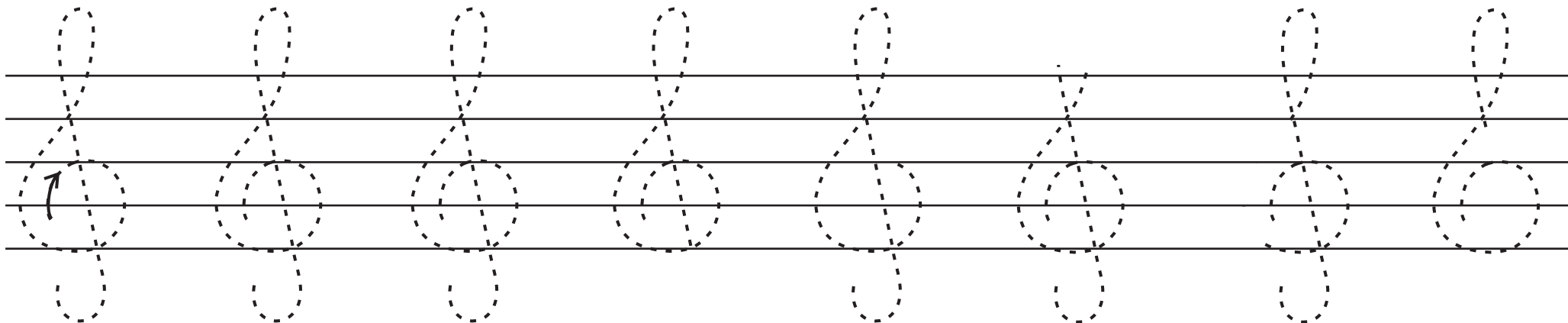
Worksheet 9

Treble Clef

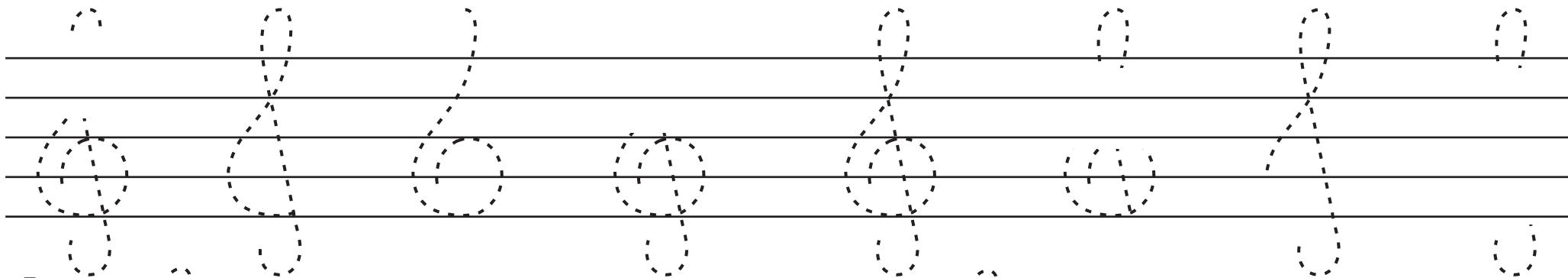
Name

Trace these TREBLE CLEFS. Use bright colours.

These treble clefs have bits missing. Complete them and then trace and colour them.



These treble clefs have even more bits missing. Complete them and then trace and colour them.

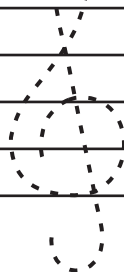
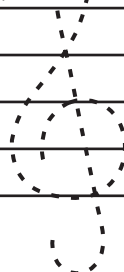


Trace a treble clef

Draw a treble clef.

Let's trace again.

Draw a treble clef.

			
---	--	---	--



TRACE and COPY

Worksheet 10

Name

Brace, Bar Lines and Repeat Sign

The BRACE is the line and bracket joining two staves. Trace and colour the BRACE.

REPEAT SIGN tells you to play the music again. Trace the repeat sign.

Copy the BRACE, BAR LINE and REPEAT SIGN here.

BAR LINES divide the music into bars..

Trace the BRACE, BAR LINE and REPEAT SIGN here.

Copy the BRACE, BAR LINE and REPEAT SIGN here.



TRACE and COPY

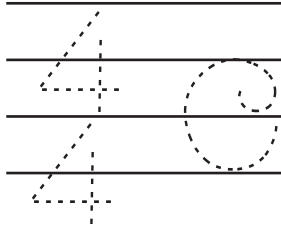
Worksheet 11

Name

Other Signs

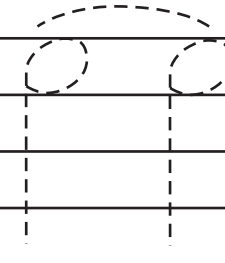
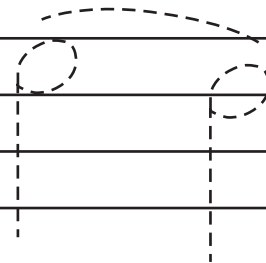
Two time signatures meaning 4 crotchet beats in each bar

This time signature means 3 crotchet beats in each bar

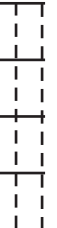


Trace the PAUSE
(hold the note longer)

SLUR or phrase line and a TIE



Double bar lines
(end of section)



(gradually get louder and gradually get softer)

Trace all the signs and copy them onto the staff below

Four blank musical staves for tracing and copying the signs.

Draw a PAUSE here a sign that means three beats in a bar a SLUR a TIE



TRACE and COPY

Worksheet 12

Name

A Little Revision

TRACE, COLOUR and COPY

SEMIBREVE

CROTCHET

QUAVER

SEMIQUAVER


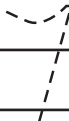
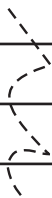
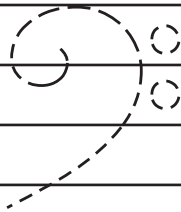
			

NATURAL


QUAVER REST

CROTCHET REST

BASS CLEF


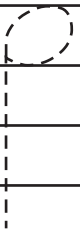

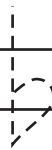
			

SHARP

 PAUSE

 TREBLE CLEF

FLAT





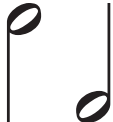




















TRACE and COPY

Worksheet 13

Name

Information

 <p>SEMIBREVES are also called WHOLE NOTES.</p>	 <p>SEMIBREVE REST</p>	 <p>BASS CLEF</p>  <p>TREBLE CLEF</p>
 <p>MINIMS are also called HALF NOTES.</p>	 <p>MINIM REST</p>	 <p>A PAUSE tells you to hold a note a little longer than its value.</p>
 <p>CROTCHETS are also called QUARTER NOTES</p>	 <p>CROTCHET REST</p>	 <p>The BRACE is the line and bracket joining two staves.</p>
 <p>QUAVERS or eighth notes Quavers have one flag.</p>	 <p>QUAVER REST</p>	 <p>REPEAT SIGN tells you to play the music again. .</p>
 <p>SEMIQUAVERS or sixteenth notes have two flags.</p>	 <p>SEMIQUAVER REST</p>	<p># SHARP b FLAT ♮ NATURAL</p>
 <p>DEMISEMIQUAVERS have three flags.</p>	 <p>DEMISEMIQUAVER REST</p>	<p>Some common TIME SIGNATURES</p> <p>       </p>