



Product Catalog

Tracer™ SC System Controller For Tracer Building Automated Systems





Copyright

© 2013 Trane. All rights reserved.

This document and the information in it are the property of Trane and may not be used or reproduced in whole or in part, without the written permission of Trane. Trane reserves the right to revise this publication at any time and to make changes to its content without obligation to notify any person of such revision or change.

Trademarks

Trane and its logo are trademarks of Trane in the United States and other countries. All trademarks referenced in this document are the trademarks of their respective owners.



Table of Contents

Product Introduction	4
Tracer Building Automation System	5
Tracer SC System Architecture	6
User Interface	7
Alarms and Events	7
Data Logs	8
Schedules	9
Overrides	10
Reports	11
Graphics and the Tracer Graphics Editor	12
Navigation Tree	15
User Security	15
System Control	16
Area Application	16
Variable Air Systems (VAS)	16
Chilled Plant Control (CPC)	16
Trane EarthWise™ Systems	17
Tracer Graphical Programming (TGP2)	17
Unit Control	18
Resources	19
Specifications	20
Hardware Components	23
Tracer SC System Controller	23
Trane PM014 Power Supply Module	24
Tracer™ BACnet® Terminator	24
Medium Enclosure (optional)	25
Large Enclosure (optional)	26



Product Introduction










Tracer™ SC allows you to streamline facility management without reinventing the entire system. Adding Tracer SC to your system provides a flexible, cost effective solution for building automation, and managing the facility climate that can extend to lighting and energy consumption. Accessible from most PCs, tablets and smart phones, Tracer SC eliminates the need for a dedicated computer and monitor so you can manage system performance whenever and wherever it is convenient. Tracer SC controller's simplified, Web-based management tool reduces scheduling, reporting and system application chores to simple "point and click" tasks. The intuitive online tools provide improved efficiencies, increased tenant comfort and reduced energy costs, which result in operational cost-savings and a better bottom line.

	<p>Occupant comfort and energy savings</p> <ul style="list-style-type: none"> • Tracer SC includes several factory engineered HVAC applications that have been developed by HVAC system experts and tested on tens of thousands of facilities to ensure that your facility operates at its peak performance. These applications provide consistent comfort and improved indoor air quality, while reducing energy requirements. • For any building owner concerned with energy, indoor air quality, and the environment, Trane EarthWise™ Systems represent a design philosophy whose time has come. EarthWise Systems provide documented sustainability of high efficiency and low emissions over the entire lifetime of the building. • Tracer Graphical Programming (TGP2) is a powerful graphical program that can be used to customize factory applications or control non-HVAC equipment.
	<p>Access your facility from anywhere</p> <ul style="list-style-type: none"> • Tracer SC is web-enabled and accessible from virtually any device with a web browser. All of the most popular device types, operating systems, and browsers are supported. • The Tracer™ BAS Operator Suite is a mobile app that allows you to monitor and manage buildings from virtually anywhere, giving you greater freedom and constant peace of mind.
	<p>Support for open, standard protocols</p> <ul style="list-style-type: none"> • Open, standard protocols are the key to enabling communication among Trane and non-Trane HVAC equipment, as well as other complementary facility systems. These protocols enable communication across systems and vendors to ensure that your building operates at its best on day one and beyond. • Tracer SC natively communicates to BACnet® and LonTalk controllers and is listed as a BACnet Building Controller (B-BC) by BACnet International's BACnet Test Labs (BTL). • Tracer SC supports Trane® Wireless COMM, providing standard wireless BACnet over Zigbee™ building automation between Trane BACnet controllers and zone sensors.
	<p>Support for Trane® Wireless COMM</p> <ul style="list-style-type: none"> • Trane Wireless Comm brings maximum flexibility to your building automation system. • For contractors, it significantly simplifies building controls projects by minimizing the engineering, estimating and project management tasks associated with communication link. For building owners, it provides easier and more cost-effective controls upgrades and building expansion projects. • Trane technology helps prepare your facilities for the future of building information. Trane Wireless Comm runs BACnet protocol over ZigBee building automation standards. Trane Wireless COMM is the first HVAC manufacturer to be Zigbee Certified.

Tracer Building Automation System

From our industry-leading building automation systems to equipment controls and sensors, Trane offers a complete controls portfolio to enable you to operate buildings at peak energy and operational efficiency.

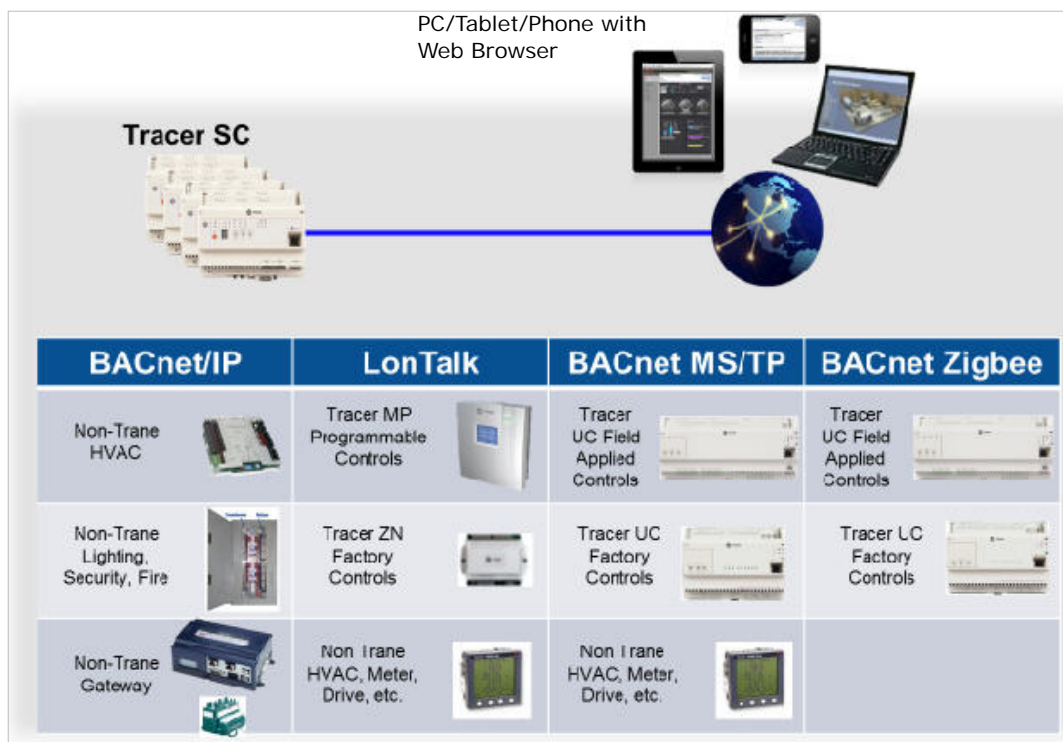
Trane controls are built on open, scalable platforms. They provide options to integrate with your existing equipment and controls, regardless of brand, and give you the latitude to easily expand into other systems within your building, multiple buildings and buildings you'll add in the future.

 <p>Tools and Services</p>	Enterprise		Tracer ES	
	Building		Tracer SC	
	Equipment		Tracer UC family	
	Spaces		Sensors	

Tracer SC System Architecture

Tracer SC is at the heart of a Tracer building automation system. Tracer SC provides a web-based front end for your facility that can be accessed with most PCs, tablets and smart phones. Tracer SC includes powerful, factory-engineered applications that are designed to provide the perfect balance of energy efficiency and user comfort. Tracer SC communicates with a variety of Trane and non-Trane controllers using open, standard protocols, including BACnet and LonTalk. A diagram depicting the high-level system architecture is shown in [Figure 1](#).

Figure 1. Tracer building automation system structure

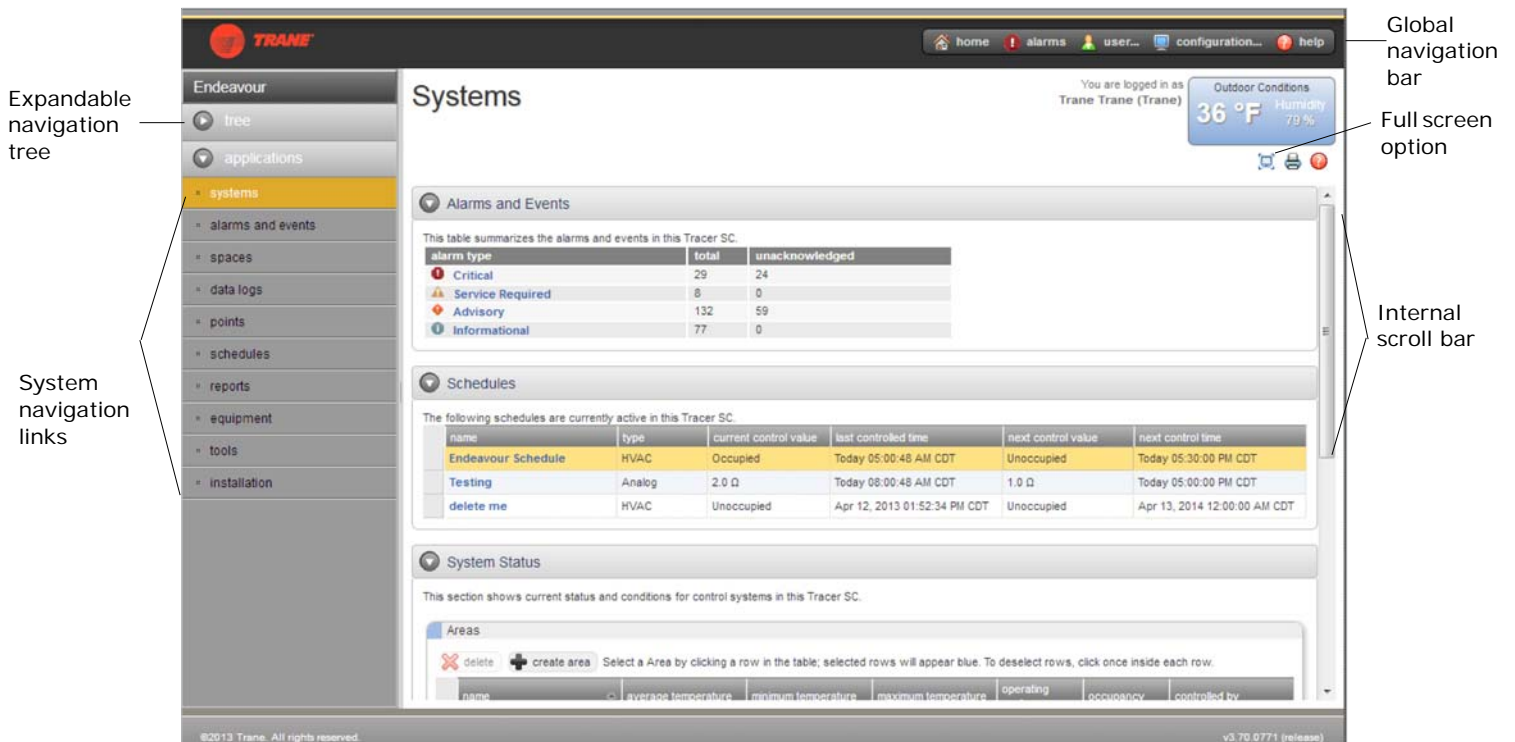


User Interface

The Tracer SC user interface provides an easy way for building operators to set up, operate, and modify a building automation system. The home page (Figure 2) contains system status information and links to navigate to all areas of the system.

The main features of the user interface are described in this section.

Figure 2. Tracer SC user interface



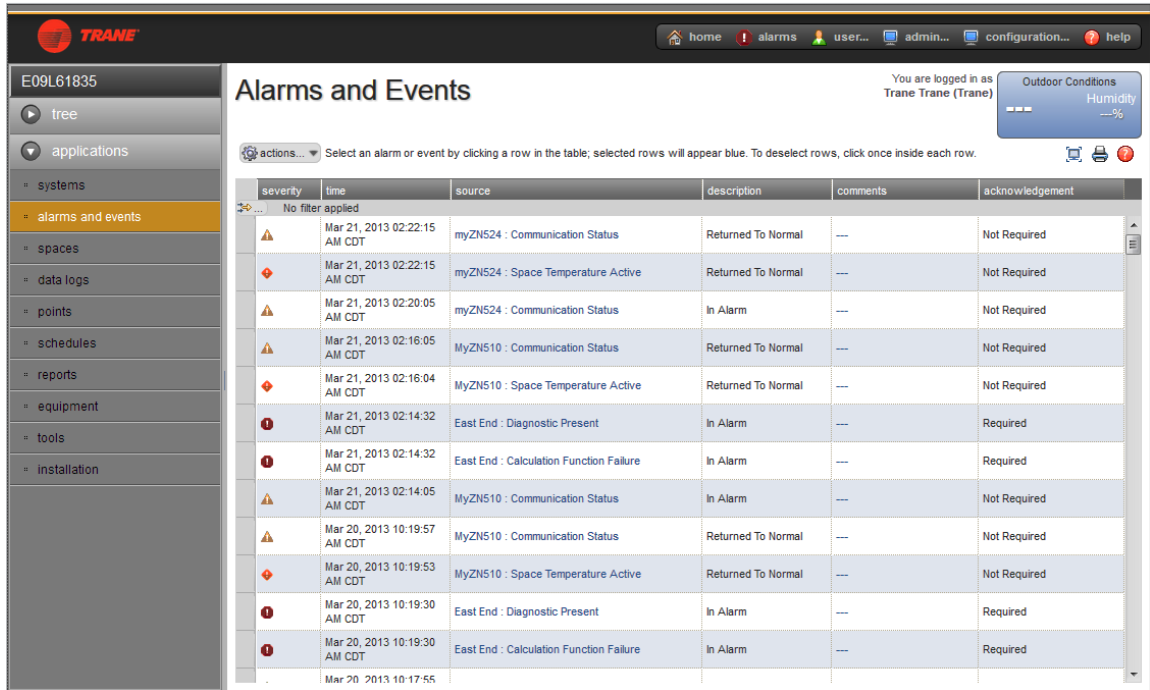
Alarms and Events

Events are occurrences that are detected by a Tracer building automation system. They can include diagnostics, critical operating conditions, as well as routine procedures.

An event that is triggered by the detection of an abnormal or critical operating condition is generally considered to be an alarm. If a critical alarm exists, an alarm icon flashes in the global navigation bar, which remains visible in the right corner of every page of the user interface.

When the system detects an event, data about the event appears in a log on the Alarms and Events page (Figure 3, p. 8). The data displayed in the log includes when and where the event occurred and whether the operator is required to acknowledge it. An operator can also use the log to add comments about events. Column headings can be used to sort and filter events. They can also be removed or exported from the log.

Figure 3. Alarms and Events log



The Alarms and Events log has seven categories that can be used to sort and filter them. The log can be sorted on any of these categories including, for example, by priority. Filtering can be used to view only the alarms from a specific piece of equipment, for example, or those received at a specific time or from a specific alarm category.

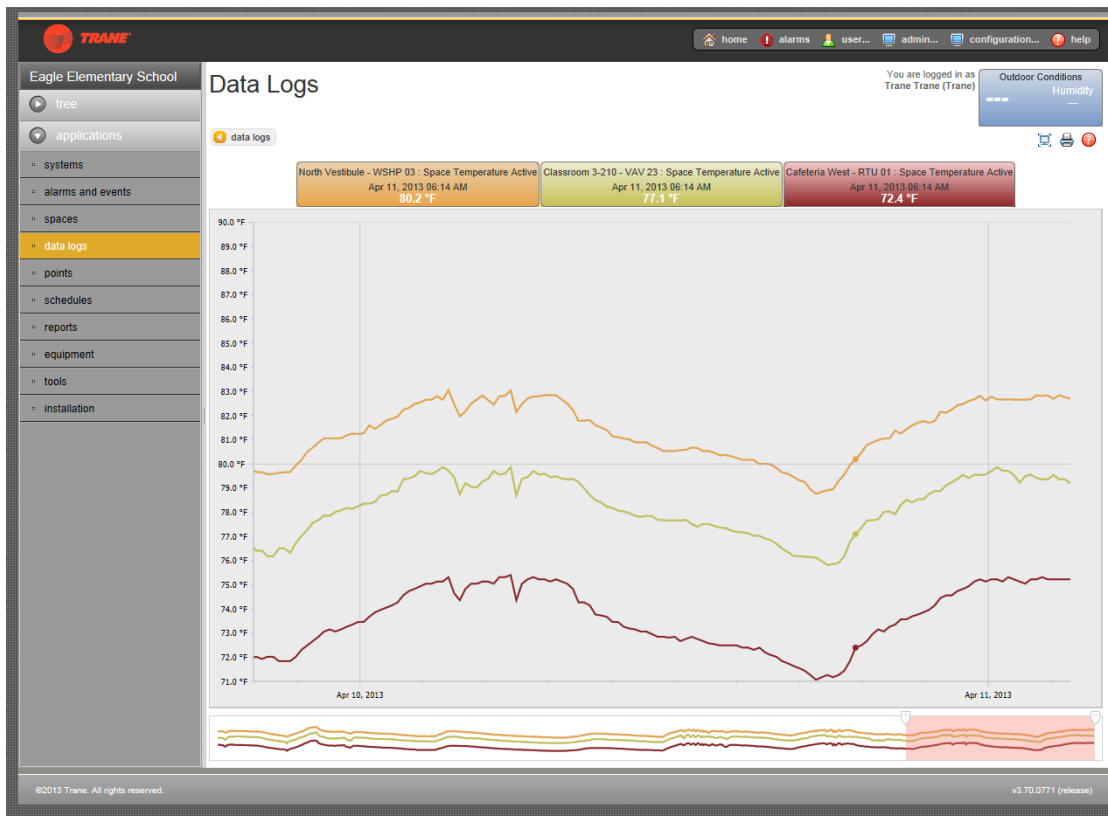
Events can also be routed by e-mail to selected system operators. Event routing rules can be configured so that events respond to specific conditions when they occur.

Data Logs

Data logs, also referred to as trends, allow users to produce a variety of data samples at defined intervals to show the historical and current status of the facility. Data logs record, in real-time, the value of a data point in the system and the time at which the value was recorded.

Data logs can be viewed in real-time, or at a later time. They can also be printed and saved. With the proper security access, system users can configure (create, delete, and update) and manage (clear, enable, and disable) data logs in the system. (See [Figure 4, p. 9](#) for an example of a data log.)

Figure 4. Data Logs example



Schedules

Scheduling is one of a facility's most important energy-saving strategies. It ensures that equipment runs only when needed. Use schedules to to:

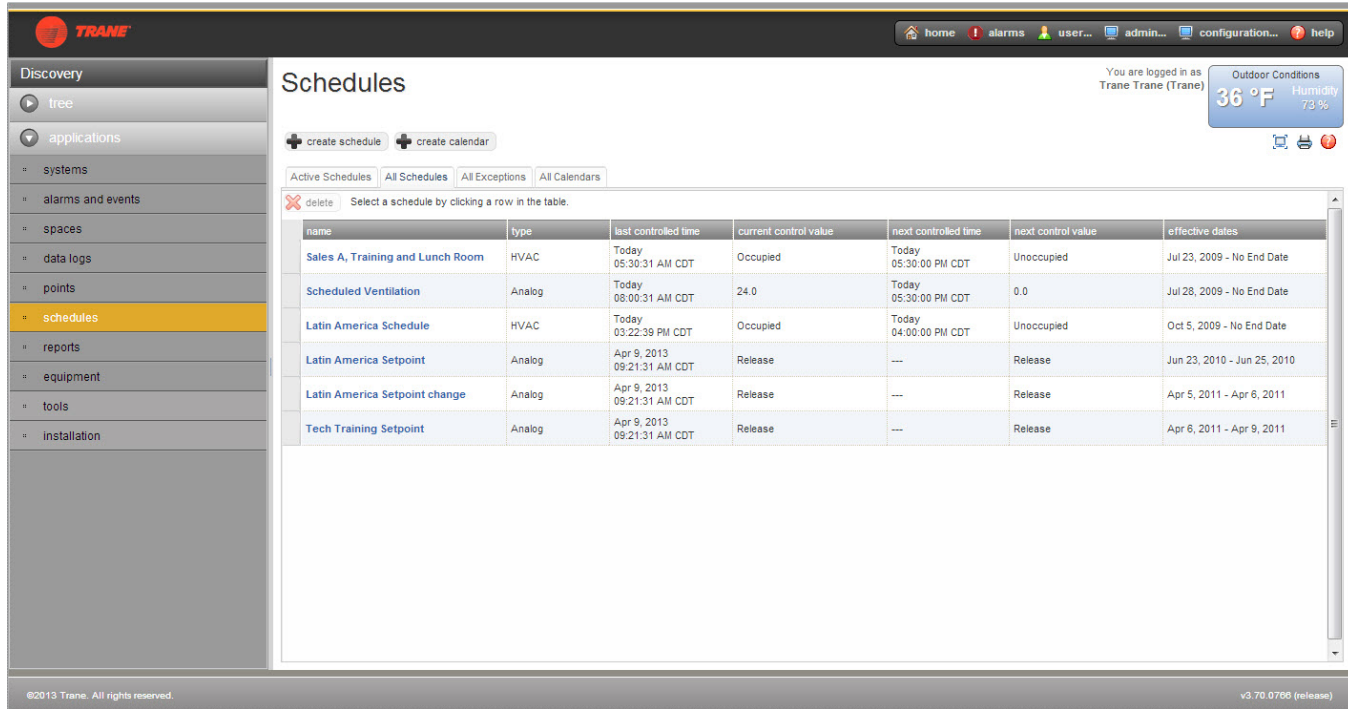
- Keep equipment running at minimal energy-use levels on weekends and holidays
- Create exceptions to the standard schedule
- Perform optimal start and stop of equipment to optimize energy use while maintaining comfort requirements
- Change setpoints at specific times of day

From the home page, you can select:

- All Schedules, which shows all schedules in the system
- Active Schedules, which shows only the active schedules in the system

Figure 5, p. 10 shows an example of an All Schedules page.

Figure 5. Schedules



Overrides

A typical challenge that facility managers have is maintaining the balance between automatic and manual system control. Tracer SC provides multiple methods of overriding equipment, applications and points while also ensuring that the proper balance of automatic and manual system control is kept. These methods include:

Permanent Overrides

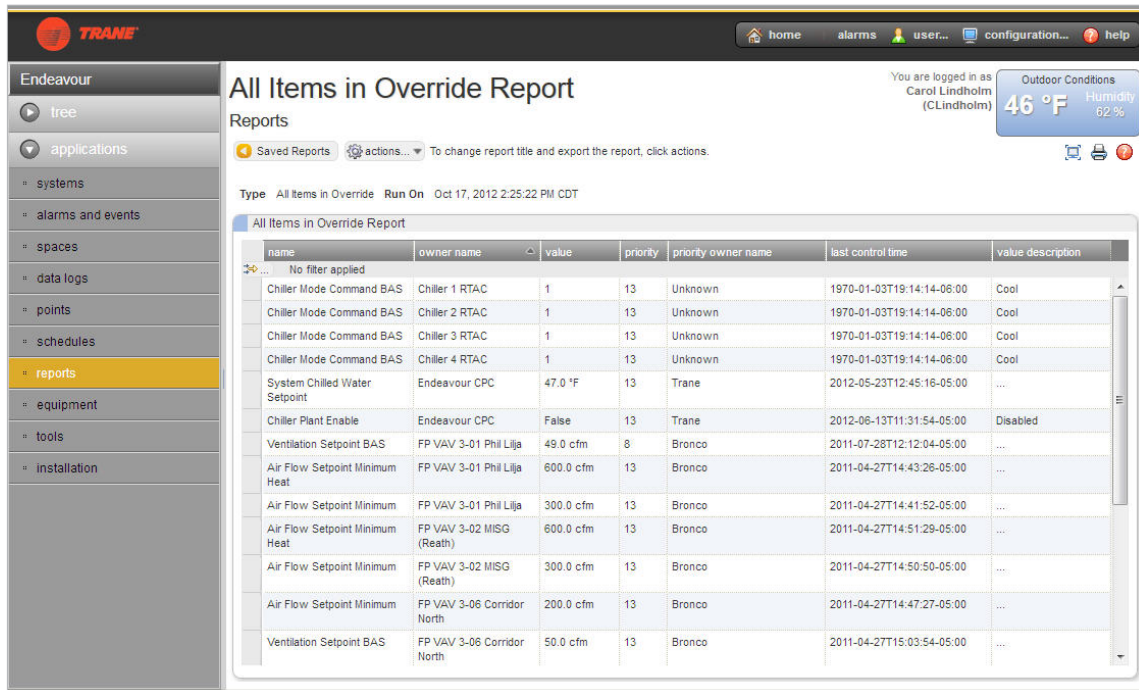
The most typical use of a permanent override is through applications. Tracer SC provides the ability to determine which user or application has performed an override to quickly determine who has overridden a setpoint.

Temporary Overrides

A common challenge in facilities is inadvertent overrides. Tracer SC provides a default override option for users that allow an override to expire after a period of time. This ensures that temporary overrides do not inadvertently become permanent overrides.

All items in Override Report

It can be difficult to track down overrides that have become permanent and are causing a facility to act differently than a facility manager expects. Tracer SC includes a standard report that allows a user to quickly identify all points within the system that have been overridden. See [Figure 6, p. 11](#).

Figure 6. All Items in Override Report


Reports

Standard reports for Trane equipment are available from Tracer SC. These reports provide a valuable source of data that can be used for record-keeping and troubleshooting.

Report types include:

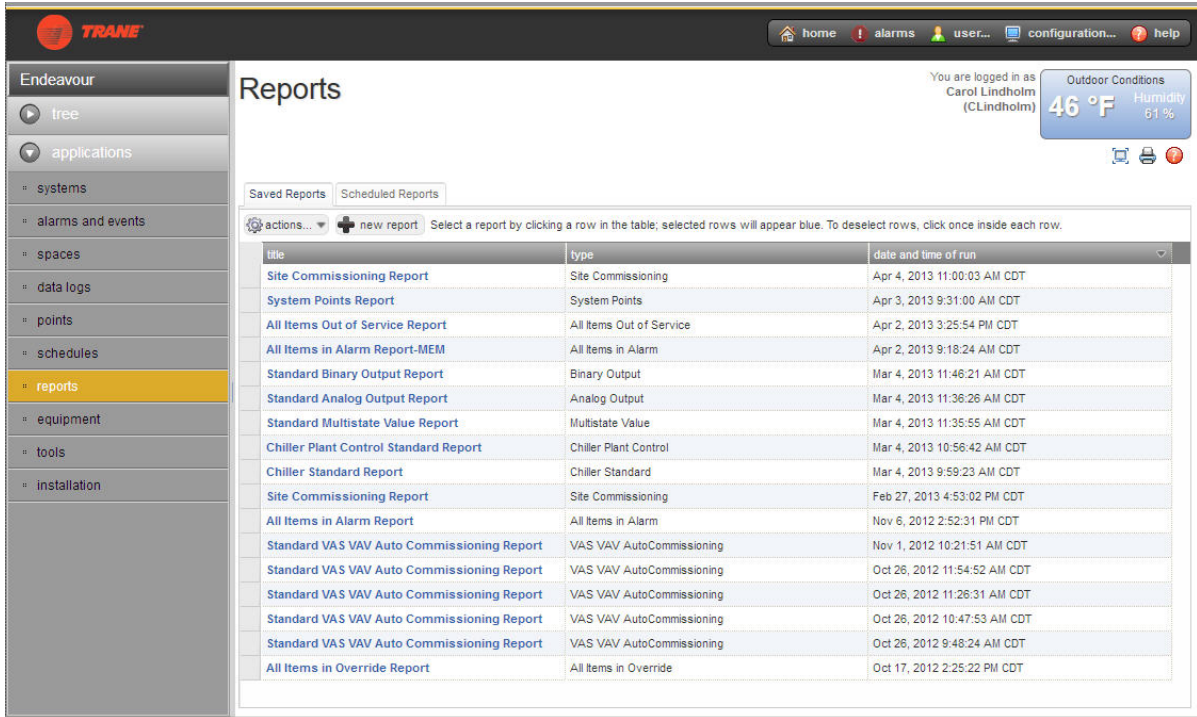
- Site reports
- VAS commissioning reports
- Points reports
- Chiller reports

Report features include:

- Scheduling reports to run during specific date periods and run frequencies
- Specifying file storage options for scheduled reports
- Exporting reports to save to your PC as CSV, HTML, or PDF files
- Editing scheduled reports

See [Figure 7, p. 12](#).

Figure 7. Reports



Graphics and the Tracer Graphics Editor

With the Tracer Graphics Editor (TGE), available through the TracerTU service tool, users can create, edit, and publish graphics for use on Tracer SC. Graphics on the Tracer SC are used to monitor and control building equipment and applications. They can display data related to climate, lighting, and other controllable operations. They can be used to change setpoints and to override equipment operation.

TGE can be used to align graphical elements, determine which elements appear on top, and perform cut, copy, and paste functions.

Graphics can include:

- Any data that is available in the system as a numerical or text value
- Analog values that can change colors if they deviate from a desired value
- Multiple graphic images in JPEG, GIF, and animated GIF formats
- Visual elements from the building, such as floor plans or exterior views from CAD drawings
- Digital photography in JPG and GIF formats
- Animated images to represent binary and analog values
- Target buttons that provide links to related sources
- User controls including push buttons, check boxes, drop-down list boxes, and entry fields

Graphics can be grouped in a logical way to simulate navigation through the building automation system. See [Figure 8](#), [Figure 9](#), and [Figure 10](#) as examples.

Figure 8. Home page showing graphic of building exterior (example 1)

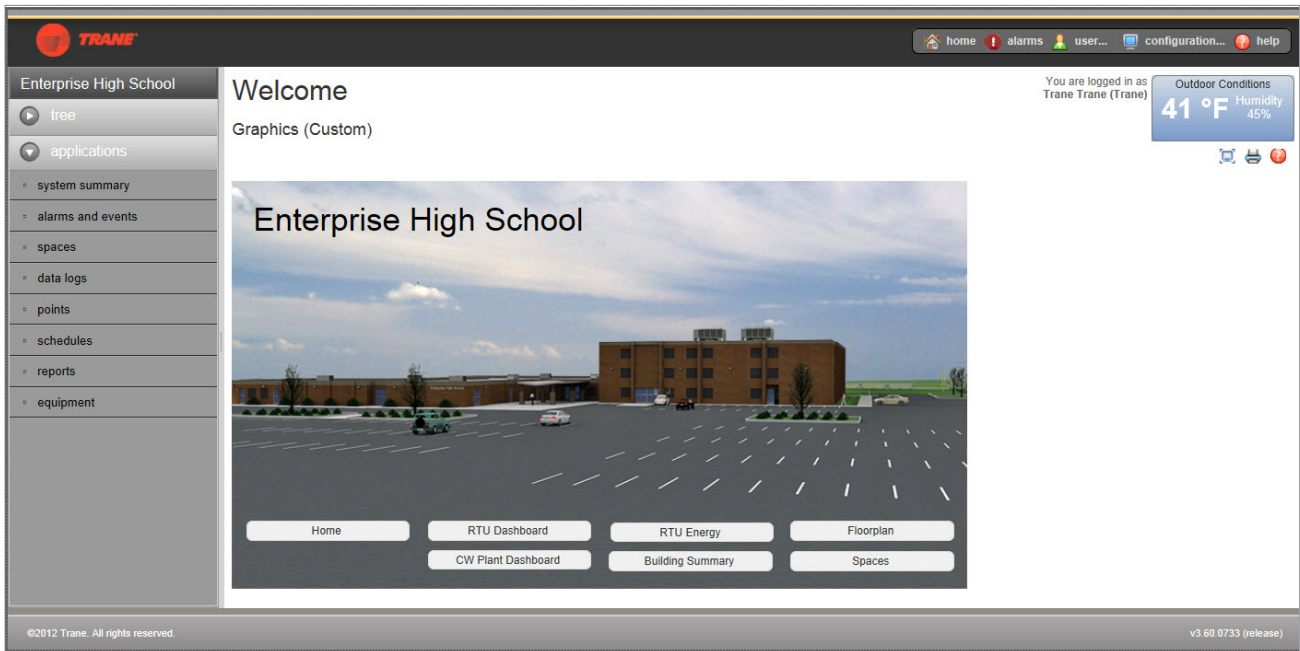


Figure 9. Home page with floor plan graphic (example 2)

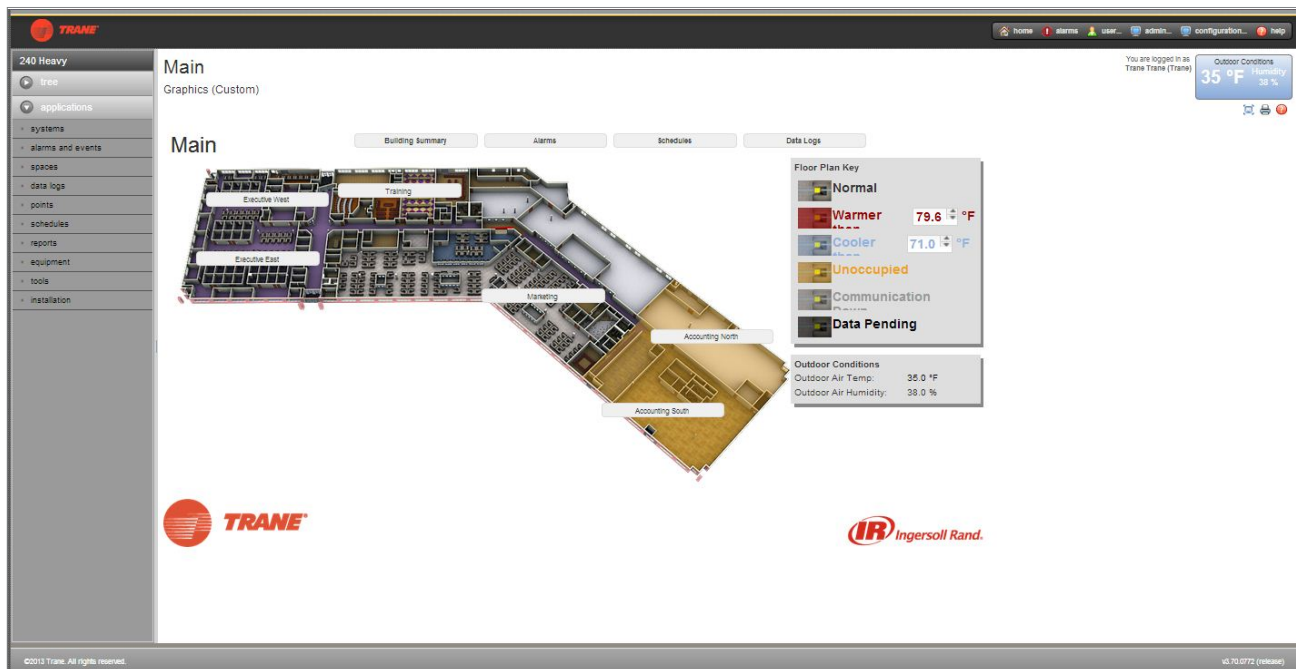
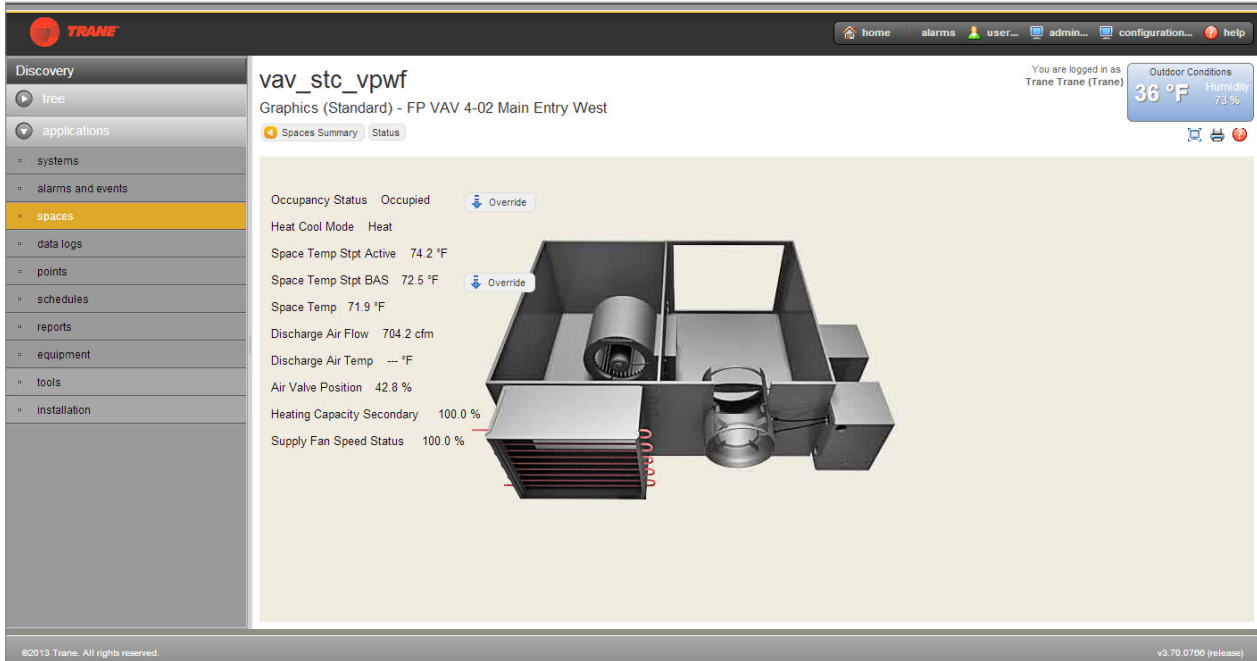


Figure 10. Equipment status graphic (example 3)



Navigation Tree

The navigation tree contains the logically ordered and grouped content of all the elements of your HVAC system. The navigation tree populates automatically when spaces, systems, points, and equipment are installed. A navigation tree provides an alternate way to navigate through the user interface (Figure 11).

The navigation tree consists of nodes, display text, and icons. You build the tree by choosing display text for nodes, arranging the nodes, and assigning associated graphics to them. The graphics represent equipment and areas of the facility.

Figure 11. Navigation tree example

Click to open the navigation tree

Click to expand the contents of a node

Use the edit bar to move nodes, rename nodes, add graphics, or remove items from the tree

Endeavour

tree

- spaces
- equipment
 - chillers
 - air handler
 - TRACER LCH INTELLIP
 - generic
 - South America CO2 Se
 - Asia CO2 Sensor
 - Gene Shedivy CO2 Se
 - Partner II CO2 Sensor
 - Solutions Center CO2 S
 - Team Room #8 CO2 Se
 - Team Room #9 CO2 Se
- systems
 - areas
 - variable air systems
 - chiller plants
 - points
 - Floor Plans
 - Full Building
 - Marketing/IT Floor Plan
 - Accounting South
 - Full Building

Systems

Alarms and Events

This table summarizes the alarms and events in this Tracer SC.

alarm type	total
Critical	24
Service Required	8
Advisory	170
Informational	50

Schedules

The following schedules are currently active in this Tracer SC.

name	type	current
Endeavour Schedule	HVAC	Occup
Testing	Analog	2.0 Ω
delete me	HVAC	Unocc

System Status

This section shows current status and conditions for control sys

Areas

delete + create area Select a Area by clicking a r

name average temperature

User Security

A sophisticated password system protects a Tracer system from unauthorized access. Operators are assigned a role, which defines their access rights. Operators have access only to those features which are defined in their roles. Several predefined roles can be selected from the Tracer SC interface and roles can also be customized. An operator with administrative-level security can manage users and roles and has the ability to reset passwords.



System Control

Tracer SC includes a powerful system control engine. Every Tracer SC ships with several factory engineered HVAC applications, support for Trane Earthwise™ Systems, and a powerful custom graphical programming language.

Area Application

The Area application coordinates groups of equipment that represent the tenant or occupant organization within a building, which allows for standard calculations/functions and a simplified user interaction with the facility. The Area application allows users to assign unit controllers, binary outputs, and binary values as members of a common area. The area application can be configured to use multiple algorithms, along with area temperatures and humidity inputs, to make an economizing decision.

The Area application also supports:

- Optimal start/stop
- Humidity pulldown
- Night purge
- Unoccupied heating/cooling set-points
- Unoccupied humidify/dehumidify
- Timed override functions

Additionally, the Area application allows users to efficiently perform a single operation, such as changing a setpoint, creating a schedule, performing an override, and apply it to all members of the area. For more information, see the *"Air Systems for Tracer SC Applications Guide"*, BAS-APG007-EN.

Variable Air Systems (VAS)

The Variable-Air-Volume Air System (VAS) coordinates the control of air handlers, rooftop units, and variable air volume terminal units. The Tracer SC VAS includes valuable tools to help manage tasks that were previously problematic and time consuming, such as:

- Coordinating AHU and VAV box operation
- Commissioning VAV boxes
- Scheduling common spaces
- Optimizing ventilation
- Optimizing duct static pressure

For more information, see the *"Air Systems for Tracer SC Applications Guide"*, BAS-APG007-EN.

Chilled Plant Control (CPC)

The Chiller Plant Control (CPC) application permits you to configure a chiller plant for optimal efficiency and reliability, and provides a means for you to monitor and control the daily operation. Depending upon the many possible chiller plant configurations and design differences, the CPC application can do the following:

- Provide overall chiller plant status information and alarms to local and remote Tracer SC users
- Enable or disable chiller plants
- Start, stop, and monitor the status of system chilled water pumps
- Calculate individual chilled water setpoints for individual chillers in series chiller plants
- Request when chillers are added or subtracted according to building load requirements and user-specified add and subtract logic

- Rotate chillers according to user-defined intervals
- Remove chillers from the rotation in the event

For more information, see the “Chiller Plant Control for Tracer SC Application Guide”, BAS-APG012-EN.

Trane EarthWise™ Systems

For any building owner concerned with energy, indoor air quality, and the environment, Trane's EarthWise Systems represent a design philosophy whose time has come. EarthWise and EarthWise Elite Systems, by definition, provide documented sustainability of high efficiency and low emissions over the entire lifetime of the building.

Trane EarthWise Systems include:

- Low Flow, Low Temperature CentraVac™ Chilled Water Systems
- Ice Enhanced, Air-Cooled Chiller Plant
- Intelligent Variable Air System for chilled-water applications
- Intelligent Variable Air System for IntelliPak™ rooftop applications
- Central Geothermal Systems

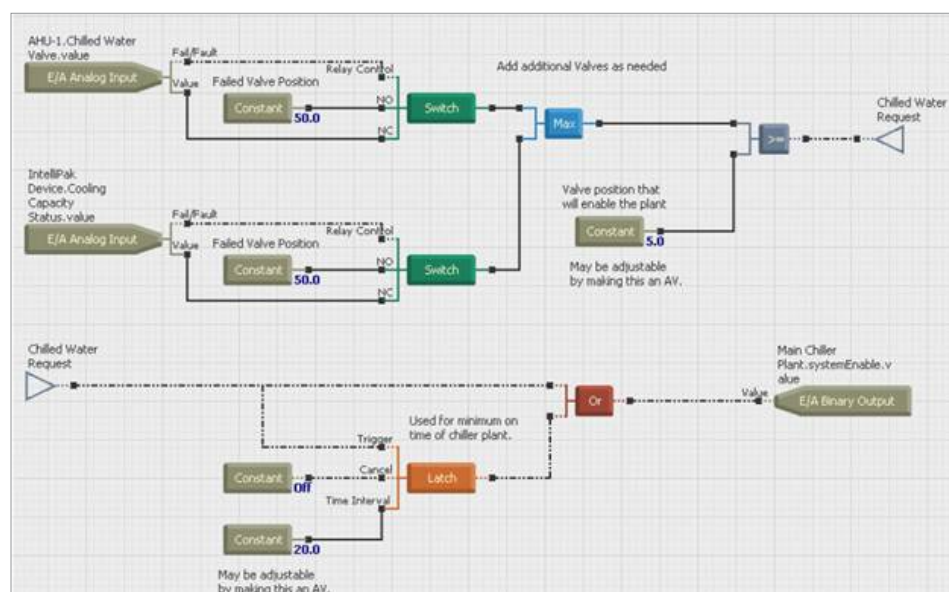
Find out more about EarthWise at http://www.trane.com/Commercial/HvacSystems/1_3_EarthWise.aspx

Tracer Graphical Programming (TGP2)

Tracer Graphical Programming (TGP2) is a powerful graphical program that allows you to customize Tracer system applications. TGP2 routines are typically used for sequencing equipment, calculating setpoints and values, and performing shutdown sequences.

Note: TGP2 is available through the Tracer™ TU service tool.

Figure 12. TGP2 example





Unit Control

Unit controllers provide all necessary unit control functions. They operate associated unitary equipment, while ensuring that all built-in safety features are enabled and that diagnostics are issued.

Each controller is designed to operate in stand-alone mode. Therefore, if system control fails, unit operation can continue.

Unit controllers installed on a Tracer SC can be a combination of the following BACnet and LonTalk unit controllers:

BACnet (MS/TP) Unit Controllers Supported by Tracer SC

- Tracer UC210 unit controller for variable-air-volume (VAV) equipment
- Tracer UC400 unit controller for variable-air-volume (VAV) equipment
- Tracer UC400 unit controller for programmable equipment
- Tracer UC800/AdaptiView unit controller for CenTraVac chillers
- BCI-I: BACnet communications interface for IntelliPak system
- BCI-C: BACnet communications interface for chillers
- BCI-R: BACnet communications interface for ReliaTel
- Non-Trane BACnet (MS/TP) devices

Wireless COMM Unit Controllers Support by Tracer SC

- Tracer UC400 unit controller for variable-air-volume (VAV) equipment
- Tracer UC400 unit controller for programmable equipment
- Tracer UC600 unit controller for Air Handler (AHU) equipment
- Tracer UC600 unit controller for programmable equipment

LonTalk Unit Controllers Supported by Tracer SC

- Tracer AH540/541 air-handler controller
- Tracer MP501 multi-purpose controller
- Tracer MP503 input/output module
- Tracer MP580/581 programmable controller
- Tracer VV550/551 VAV controller
- Tracer ZN510/511 zone controller
- Tracer ZN517 unit controller
- Tracer ZN520/521 zone controller
- Tracer ZN523 zone controller
- Tracer ZN524 water-source heat pump unit controller
- Tracer ZN525 zone controller
- Tracer CH530 chiller controller
- Tracer CH532 chiller controller
- LCI-C: LonTalk communications interface for chillers
- LCI-I: LonTalk communications interface for IntelliPak systems
- LCI-R: LonTalk communications interface for ReliaTel systems
- Non-Trane LonTalk devices using SCC, DAC, and chiller profiles; and devices supporting LonTalk standard network generic variables

Resources

The following resources are available for managing Tracer building automation systems:

Tracer SC Installation, setup, and operation

- Tracer SC System Controller Installation and Setup Guide (BAS-SVX31-EN)
- Tracer SC online help
- Tracer SC Installation Instructions (X39641154)
- BACnet Wiring Best Practices and Troubleshooting (BAS-SVX51-EN)
- Expanded Communication Options – FAQs (BAS-PRC073-EN)

Programming

- Tracer Graphical Programming (TGP2) Editor
- Tracer Graphical Programming (TGP2) Application Guide (BAS-APG008) and online help
- Tracer UC400/UC600 with Tracer SC Programming Guide (BAS-SVP06-EN)

HVAC applications

- Tracer SC Air Systems Application Guide (BAS-APG007)
- Tracer SC Chiller Plant Control Application Guide (BAS-APG012)

Service tools

- Tracer TU—Tracer TU Service Tool Getting Started Guide (TTU-SVN01) and online help
- Rover Version 7 Operation and Setup Guide (EMTX-SVX01) and online help

Graphics Tools

- Tracer Graphics Editor (TGE) User Guide (BAS-SVU06-EN)
- Working with Standard Graphic Templates (BAS-SVU15-EN)
- Offline Graphics Creation (BAS-SVU16-EN)
- Centralized Services

Software updates

- Tracer TU Service Tool Getting Started Guide (TTU-SVN01)

Web sites

- MyTraneControls.com: A free online Web site designed to assist Tracer building automation system owners and operators.

Tracer BAS training courses

- The Trane College of Building Automation offers a comprehensive portfolio of technical courses on the operation, installation, and programming of Tracer building automation systems. Refer to <http://trane.com/COMMERCIAL/DNA/View.aspx?i=586>.

Service, maintenance, troubleshooting

In addition to the resources listed above:

- Trane Product Support
- Warranty information



Specifications

This section contains specifications for Tracer SC system controllers and for Tracer building automation systems.

Table 1. Tracer SC specifications

Client Software Requirements	PC or Mac	<p>Microsoft® Windows XP, Vista, Windows 7:</p> <ul style="list-style-type: none"> • Internet Explorer™ Version 8.0 or higher • Mozilla Firefox® Version 18.0 or higher • Google Chrome™ Version 25.0 or higher <p>Apple®:</p> <ul style="list-style-type: none"> • Mozilla Firefox® Version 18.0 or higher • Google Chrome™ Version 25.0 or higher • Safari® 4.0 or higher
	PC Software requirements (Configuration UI only)	<ul style="list-style-type: none"> • Java™ SE Runtime Environment (JRE) Version 6 or higher • Adobe Flash™ player
	Tablet/Phone	<p>iOS (iPad®/ iPhone®) 5.0 and higher:</p> <ul style="list-style-type: none"> • Safari is the recommended browser on this platform • Tracer BAS Operator Suite mobile app available for download <p>Android™ 4.0 and higher:</p> <ul style="list-style-type: none"> • Google Chrome™ is the recommended browser on this platform • Tracer BAS Operator Suite available mobile app for download
	Concurrent Users	<ul style="list-style-type: none"> • Five
	Supported Languages	<ul style="list-style-type: none"> • Chinese (Simplified/Traditional) • English • French (Canada/France) • Portuguese (Brazil) • German • Indonesian • Japanese • Korean • Spanish (Latin America) • Thai • Polish • Arabic

Table 1. Tracer SC specifications

Tracer SC system controller	Power requirements	<ul style="list-style-type: none"> Nominal rating: 120/230 Vac; 50 or 60 Hz; 1 pH Maximum current: 24 VDC dedicated circuit breaker
	Operating environment	<ul style="list-style-type: none"> Temperature: From -40°F to 122°F (-40°C to 50°C) Relative humidity: From 10% to 90%, non-condensing
	Storage environment	<ul style="list-style-type: none"> Temperature: From -40°F to 158°F (-40°C to 70°C) Relative humidity: From 5% to 95%, non-condensing
	Agency Listings	UL: <ul style="list-style-type: none"> UL-864/UUKL listed (when installed and programmed in accordance with the Engineered Smoke Control System Application Guide, BAS-APG019-EN) UL-916-PAZX – energy management CUL-C22.2-signal devices – Canada FCC: <ul style="list-style-type: none"> FCC part 15, Class A CE CE: <ul style="list-style-type: none"> Emissions EN61326:1998 Class B Immunity EN61326:1998 Commercial Safety EN61010-1:2001
	Processor	PowerPC405 Core
	Memory	<ul style="list-style-type: none"> FLASH 400 MB SDRAM 256 MB
	Battery	No battery required. The clock is maintained for a minimum of three days by the super capacitor. All other programs are backed up by nonvolatile memory.
Protocol Communication	BACnet	Tracer building automation systems communicates with BACnet devices that support: <ul style="list-style-type: none"> Communications based on the BACnet ASHRAE/ANSI 135 standard ENV-1805-1/ENV-13321-1 10BASE-T/100BASE-TX dedicated Ethernet (ISO/IEC 8802-3) or Transmission Control Protocol/Internet Protocol (TCP/IP) compatible network Tracer SC is listed by BACnet Test Labs (BTL) as a BACnet Building Controller (B-BC). Listing information can be found at: http://www.bacnetinternational.net
	LonTalk	Tracer building automation systems communicates with LonTalk devices that support: <ul style="list-style-type: none"> Communications based on the EIA-709.1 (LonTalk) standard LonTalk standard network variable types (SNVTs) FTT-10A or FT-X1 transceivers Twisted-pair physical media (Level 4 wiring)
	Device Limits	Tracer SC facility (Combination of all protocols) <ul style="list-style-type: none"> Up to 240 devices BACnet (Per link/Per facility) <ul style="list-style-type: none"> Tracer UC200 Series - 60/240 Tracer UC400 Series - 60/240 Tracer UC600 Series- 10/20 Tracer UC800 Series - 60/240 BCI Series - 60/240 Trane Communicating Thermostats - 60/120 Non-Trane BACnet - 32/240 LonTalk (Per link/Per facility) <ul style="list-style-type: none"> AH Series - 120/120 CH Series - 120/120 VV Series - 120/120 ZN Series - 120/120 MP503 - 120/120 MP580 - 20/20 Trane Communicating Thermostats - 120/120 Non-Trane LON - 120/120 Wireless COMM (Per network/per facility) <ul style="list-style-type: none"> WCI - 30/240

Specifications

Table 1. Tracer SC specifications

Medium Enclosure (optional)	NEMA Type	NEMA-1
	Weight	14 lb. (6.5 kg)
	Mounting	Wall-mounted with #10 (5 mm) screws and #10 wall anchors. Mounting surface must be able to support 60 lb. (28 kg)
Large Enclosure (optional)	NEMA Type	NEMA-1
	Weight	50 lb. (23.0 kg)
	Mounting	Wall-mounted with #10 (5 mm) screws and #10 wall anchors. Mounting surface must be able to support 120 lb. (56 kg)

Hardware Components

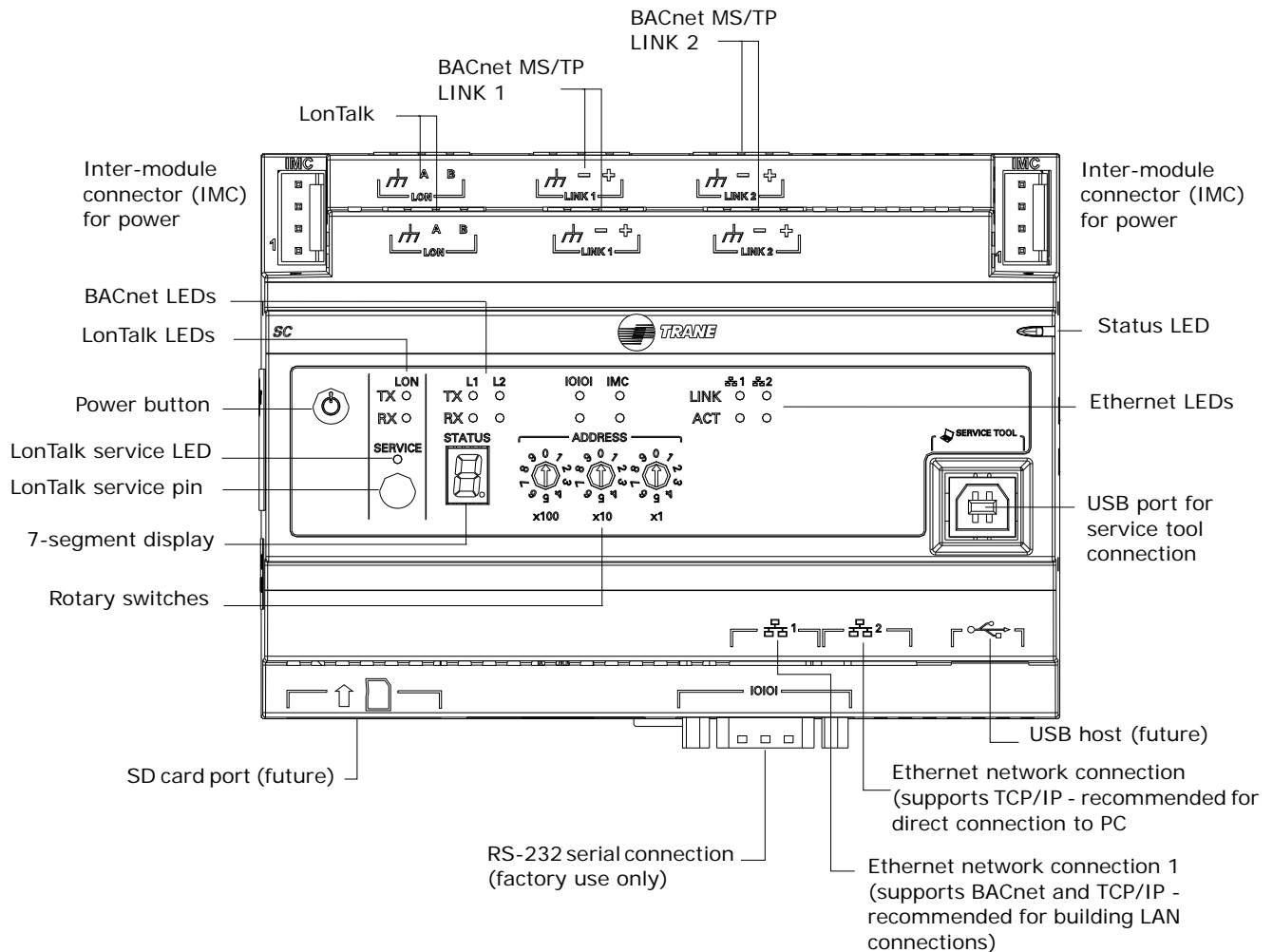
The SC system controller itself and additional hardware options are described in this section.

- Tracer SC system controller components
- Trane PM014 power supply module
- Tracer BACnet terminator
- Medium enclosure
- Large enclosure

Tracer SC System Controller

The Tracer SC system controller components are labeled in [Figure 13](#).

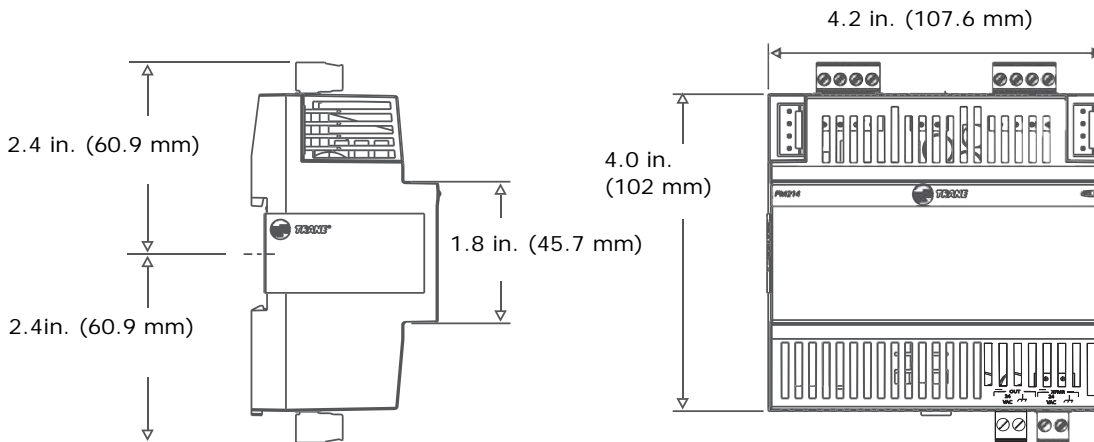
Figure 13. Tracer SC system controller components



Trane PM014 Power Supply Module

The Trane PM014 power supply module provides 24 Vdc for Trane inter-module communication (IMC) buses. IMC buses are used in components of Trane building automation systems, including the Tracer SC system controller. Refer to the "Power Supply Module Installation, Operation, and Troubleshooting Guide," BAS-SVX33-EN.

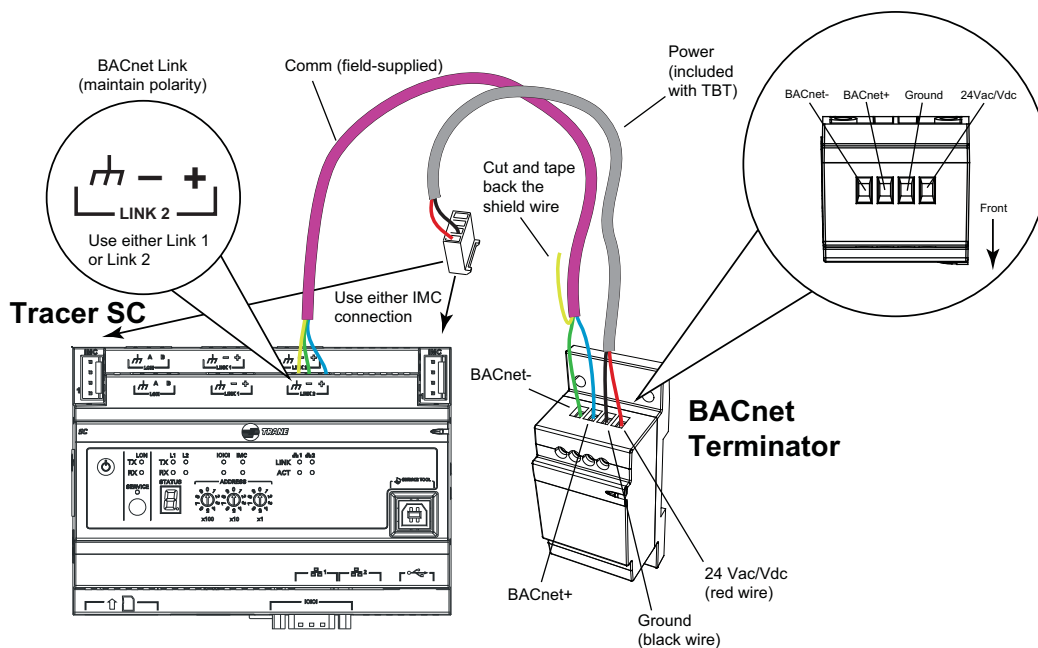
Figure 14. PM014 power supply module (dimensions)



Tracer™ BACnet® Terminator

A Tracer BACnet terminator (order no. X13651524-01) is placed at the end of each communication link in order to decrease communication signal degradation. Refer to the "BACnet Wiring Best Practices and Troubleshooting Guide," BAS-SVX51-EN.

Figure 15. BACnet terminator (wiring)

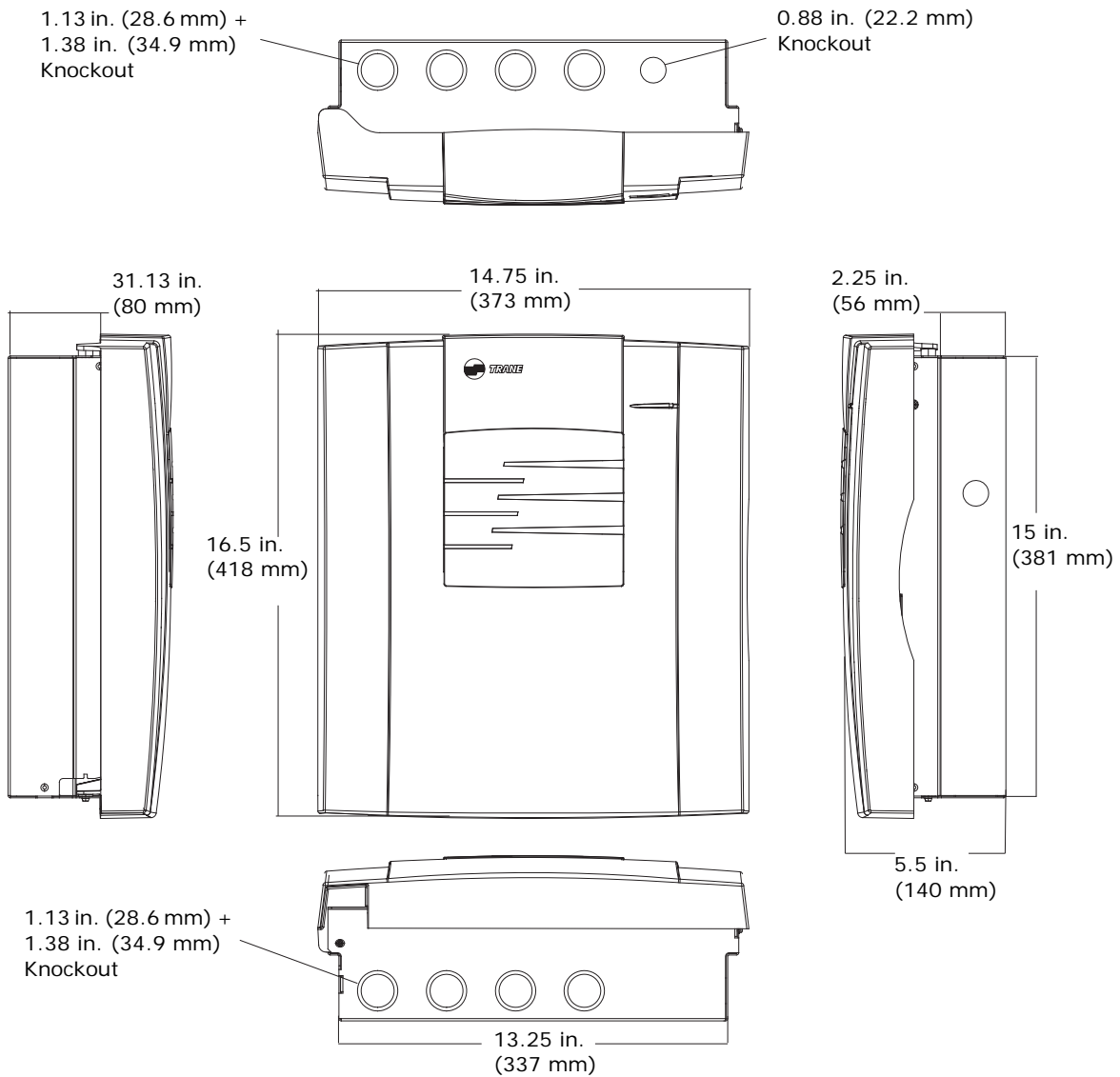


Medium Enclosure (optional)

The medium enclosure for Tracer DIN-mounted controllers is available in the following:

- 120 VAC (order number: X13651559010)
- 230 VAC (order number: X13651560010)

Figure 16. Medium enclosure (dimensions)

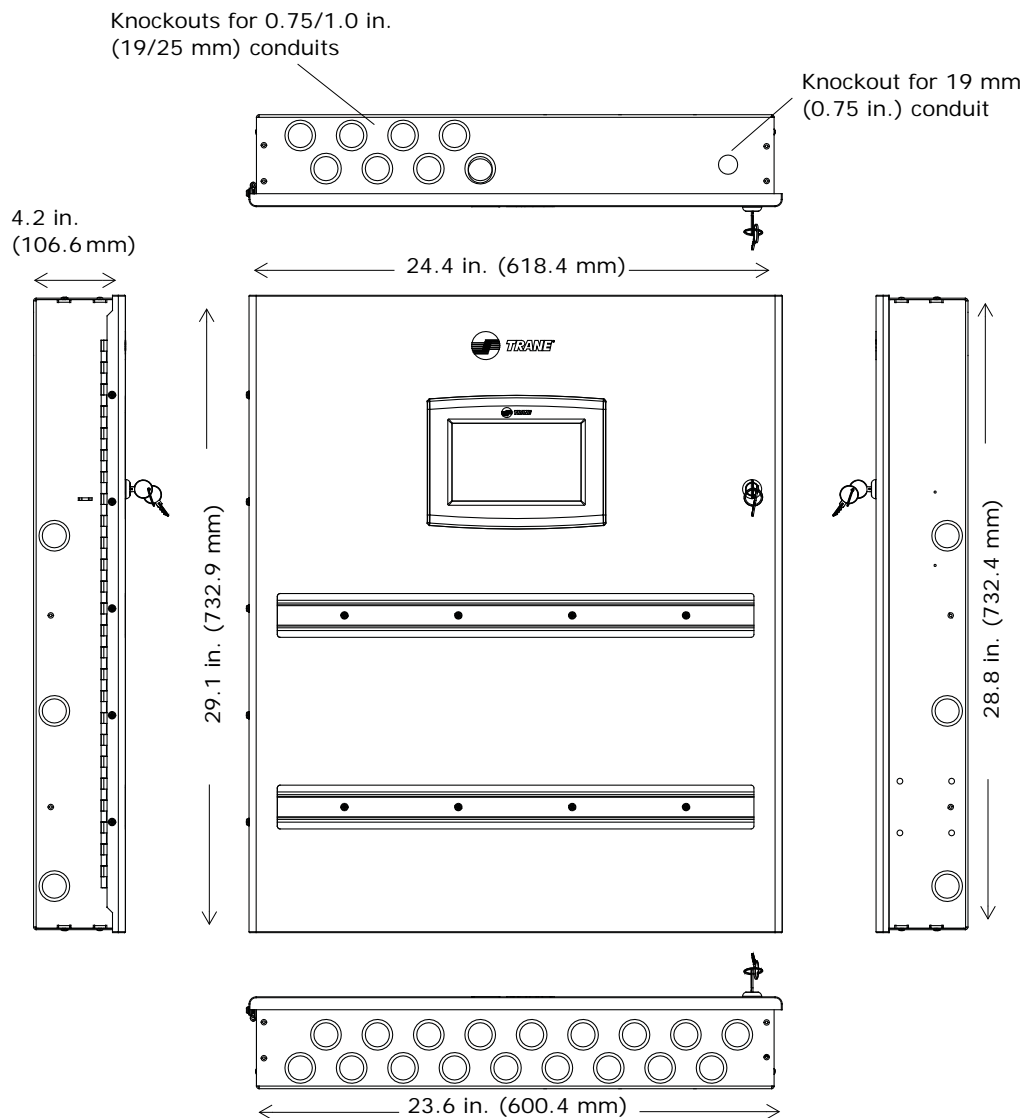


Large Enclosure (optional)

The large enclosure for Tracer DIN-mounted controllers is available in the following:

- 120 VAC
 - solid door (*order number: X1365155201*)
 - display-capable door (*order number: X1365155301*)
- 230 VAC Dual Transformer
 - solid door (*order number: X1365155401*)
 - display-capable door (*order number: X1365155501*)

Figure 17. Large enclosure (dimensions)





Trane optimizes the performance of homes and buildings around the world. A business of Ingersoll Rand, the leader in creating and sustaining safe, comfortable and energy efficient environments, Trane offers a broad portfolio of advanced controls and HVAC systems, comprehensive building services, and parts. For more information, visit www.Trane.com.

Trane has a policy of continuous product and product data improvement and reserves the right to change design and specifications without notice.

© 2013 Trane All rights reserved
BAS-PRC031-EN 10 Jun 2013
Supersedes BAS-PRC031-EN (27 Apr 2013)

We are committed to using environmentally
conscious print practices that reduce waste.

