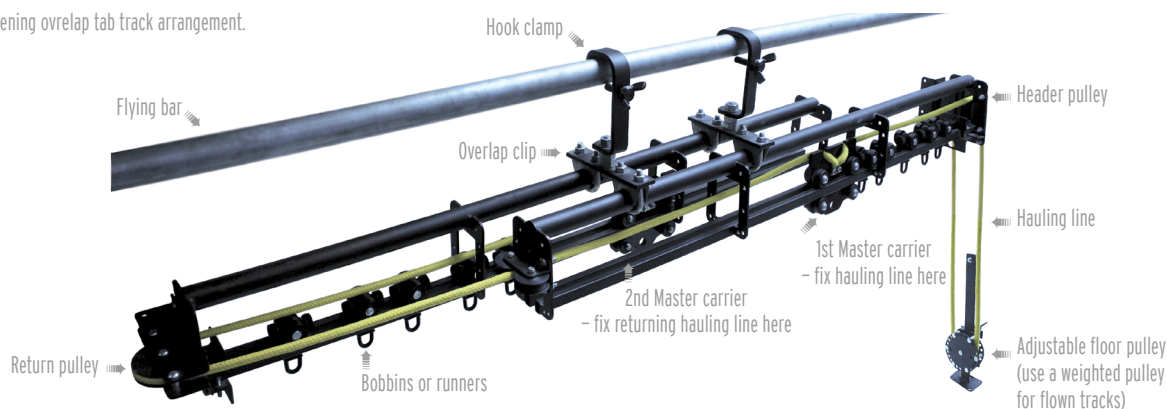


Typical centre opening overlap tab track arrangement.



Tab Track Terminology

At first glance a tab track may appear complicated but all the components from each manufacturer have basically the same functions. We have described them below to help you choose but, if you prefer, just phone us and we will calculate all your component needs.

Bobbins or Runners These run along the track, normally on small wheels, and carry the drapes. Generally, they are spaced at around 250 - 300 mm apart.

Rearfold Runners Runners with an attachment that grips the control line [until offstage] to enable a cloth to move off stage without gathering from the leading edge. Only normally used with painted cloths.

Master Runners The master runner is the lead runner. It will normally have a clamping plate to grip the control cord. For a centre opening track you will need two master runners. Clamp the handline to one runner, then thread it around the return pulley at the end of the track and clamp the returning part of the cord to the other master runner. Even if the drapes are just to be pulled along it is wise to have a master runner at the leading edges as this runner will take a greater strain than ordinary bobbins. Alternatively, mount two ordinary bobbins close together to share the strain.

Overlap Arms Some master runners will take an overlap arm which allows centre opening drapes to overlap. The alternative is to overlap the tracks but to do this you will need overlap clips plus offset plates to ensure the hook clamps align with the flying bar.

Header Pulley This double sheave vertically aligns pulley bolts to the operator end of the track. Sometimes two designs are available, one for overlap tracks and one for single tracks.

Return Pulley Horizontal pulley bolted to the far end of the track.

Floor Pulley These pulleys are fixed to the floor and the sheave can be adjusted to put tension in the cord. If your track needs to fly out then choose a foot-stirrup pulley or a weighted pulley. If you choose a weighted pulley ensure that you use a polyester handline and that regular checks are made to guard against chafe.

Handline Tracks take 6 or 8 mm diameter handlines. Nowadays most people choose matt black polyester line rather than jute sash. If you are using a weighted pulley do not use jute sash. For the track to operate the line needs to be tied [or clamped] to form a loop. The best place to do this is just behind a master carrier rope clamp as this position never has to pass through a pulley.

How to Cord Up a Tab Track

Position the assembled track at a comfortable working height. The cording principle is based on a long loop of cord, the loop being formed by clamping both the ends onto the "Cord End Master Carrier". If the track is "centre opening" then the other "slave" master carrier will be clamped to the returning cord. To cord a typical centre opening track, position the master carriers in the "Tabs Closed" position [centre stage]. Loosely tie or clamp one end of the cord onto the "Cord End Master Carrier" and thread the cord around the horizontal return pulley then back along the track passing through the rope clamp on the "slave master carrier". Loosely tighten the clamp plate and continue with the cord to the header pulley. Take it over the header pulley, around the foot-stirrup or floor-mounted pulley and back over the other sheave on the header pulley and finally back to the "Cord End Master Carrier". Ensure you have the correct drop for the floor mounted pulley and then loosely clamp the rope in place. Don't chop off the excess just yet! Take the track to its operational position. Try the track to ensure it is corded correctly then tighten the rope clamps and cut off the excess cord. [Based loosely on an extract from the Unitrack Manual].

Sound Advice

Modern steel scenery clad in 4 mm ply can act as a sounding board and may amplify any track noise if the track is directly attached to the steel. "L" shaped corners in scenery such as pelmets or soffits also have an amplifying effect and should be avoided if possible.

Shipping

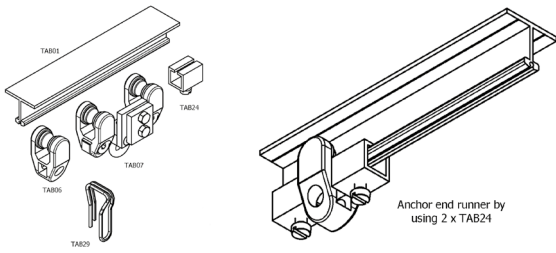
We used to have problems shipping lengths between 3 and 6m long, however these are now largely resolved, but it's worth noting a 3 m length has the benefit of being able to fit into most Transit-sized vans. We carry 2 m lengths as standard in our hire stock which can be joined using Joint Sets.

For full details of our delivery services see page 372.

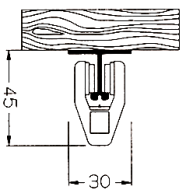


Cording Unitab Although Unitab is not supplied as a corded system it is easy to adapt it by using a Barton Cheek Block as the return pulley [BARCH2] and a Barton Double Upright Block [BAR01250] as the header pulley [page 205]. A Barton Single Pulley tied off to a ring plate can substitute as an economical adjustable floor pulley.

LIGHTWEIGHT TRACKS



Unitab System This smart black extruded aluminium track is designed to be the equivalent of a heavy-duty domestic track but with the reliability, performance and ease of installation that is expected of industrial products. Recommended for small venues, pubs and clubs. The runners are smooth running and robust. This track is not generally sold as a corded system so the curtains are pulled manually. The track is generally



screwed to a timber batten and it has a clever V groove in the top flanges to neatly position your drill bit making the task quick and easy. Choose your type of screw carefully as there isn't an abundance of clearance between the bobbins and the underside of the flange, see left. 90° curved track sections can be supplied

down to a radius of 250 mm [but this is the very tightest radius and 500 mm is preferable].

- ✓ Small neat black profile
- ✓ Simple smooth running system
- ✓ Can be supplied with curved track sections
- ✓ Ideal for clubs, hotels, and restaurants
- ✓ Good choice for studio/classroom blackout curtains
- ✓ Excellent for drapes fitted to scenery
- ✗ Not really suitable for touring [unless fixed to scenery]
- ✗ Not normally supplied corded [but see below ↓]

Unitab Track

Unitab Track	code	price
Straight Track up to 6 m long	EEETAB01	per m £21.50
Curved Track 90° section 250 mm radius [tight]	TAB01C250	£77.94
Curved Track 90° section 500 mm radius	TAB01C500	£87.25
Curved Track 90° section 1 m radius	TAB01C1000	£108.58
Joint Pins	EEETAB05	£0.16
Endstop and Curtain Anchor	EEETAB24	£6.50

Unitab Runners



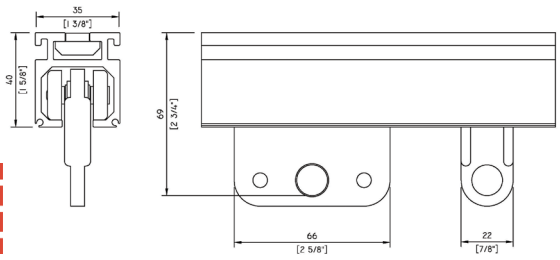
Unitab Runners	code	price
Standard Runner [WLL 2 kg Space at 250 mm]	EEETAB06	£3.78
Master Runner [with cord clamp]	EEETAB07	£36.00
S-Hooks [for use with rufflette tapes]	EEETAB29	£1.40

Unitab Mounting

Unitab Mounting	code	price
Ceiling Mount*	TABCM	£12.96

*Generally Unitab is just screwed directly to a suitable substrate.

MEDIUM-DUTY TRACKS



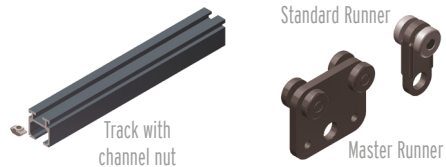
Triple E 2Way This well proven track from Triple E is designed for lightweight curtains and can be used instead of domestic tracking to provide the reliable service expected from Triple E products. The track is available in lengths up to 6.1 m [20ft] and can be provided pre-rolled for curved installations. 2Way has a continuous suspension slot along the top to take Triple E fittings, or it can be screwed directly to a soffit by using ceiling clips. The track is quickly joined with a steel plate and grub screws locating in the top slot while two roll pins provide alignment of the running surfaces, see left. The runners are designed to take ties or twin hooks but steel wire hooks are also available for use with Rufflette tapes. This track is not available as a corded version.

- ✓ Smart good looks - can be custom powder coated on request.
- ✓ Ideal for pubs, clubs and small performance venues
- ✓ Good choice for cycloramas in small photographic, TV and drama studios, and exhibition or office environments.
- ✓ Use it for "on scenery" drapes
- ✓ Can take up to 88 kg Uniform Distributed Loads at 1 m centres
- ✗ Not available corded
- ✗ Not suitable for touring

Simple good looks

2Way Track

2Way Track	code	price
Straight Track up to 6 m long black [per m]	EEE2W01B	£20.50
Straight Track up to 6 m long silver [per m]	EEE2W01S	£17.70
Curved Track 90° section 750 mm radius black	EEE2W01BC75090	£71.80
Curved Track 90° section 750 mm radius silver	EEE2W01SC75090	£66.60
Curved Track 90° section 1 m radius black	EEE2W01BC100090	£76.90
Curved Track 90° section 1 m radius silver	EEE2W01SC100090	£71.80
Curved Track special to order black [per m]	EEE2W01BC	£33.30
Curved Track special to order silver [per m]	EEE2W01SC	£30.80
Joint Plate with two pins	EEE2W05	£9.70
Endstop [black]	EEE2W24	£7.40



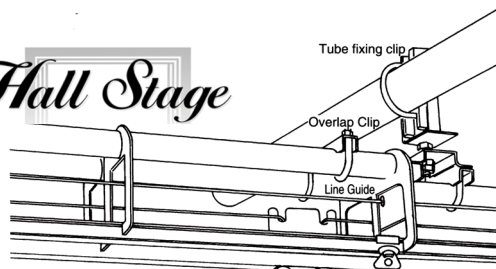
2Way Runners

2Way Runners	code	price
Standard Runner [WLL 15 kg space at 250 mm]	EEE2W06P	£3.80
Ball Raced Runner [WLL 15 kg space at 250 mm]	EEE2W06C	£6.90
Master Runner [WLL 30 kg no cord clamp]	EEE2W07W	£20.50
Wire S-Hooks [for use with Rufflette tapes]	EEE2W29	£1.60

2Way Mounting

2Way Mounting	code	price
Channel Nut [each]	EEEM8ERAILNUT	£1.08
Hook clamp black [includes channel nut]	EEEEERL14	£8.20
Ceiling Mount Clamps [5 pairs]	EEE2W30	£11.00
Wall Bracket	EEETRA16	£25.00
Studding Set + Nuts Washers [M8 x 150 mm]	EEEEERL18	£5.40

Halls Stage



Halls T60 Anglia Track Designed to meet the requirements of most small- and medium-sized stages and television and video facilities with cycloramas. Curtains can be hand-pulled, electrically or hand-winchd or just walked along. The maximum recommended length for a single wipe track is 9 m or 18 m for an overlapped track.

Single tracks can be easily suspended from bars by using the T60 universal fittings bolted to Hook Clamps [page 339]. Overlap tracks should use the "Z" brackets, see left, to centre the track on the bar. The tracks can be supplied in 45° and 90° curved sections. If you need to cut down a track onsite to fit to an exact dimension then purchase a Modular Track Clip, see left, to reinstate the end plate after cutting. Please phone for a complete list of components and prices.



Z Tube to overlap



Modular track clip

- ✓ Often installed in school stages
- ✓ Old design, so tried and tested
- ✗ Slightly fiddly joint bolts
- ✗ Old design may not suit modern stages



Endstop

Halls T60 Anglia track

Halls T60 Anglia Track

code		price
	Straight Track 500 mm section	HALT60576 £29.97
	Straight Track 1 m section	HALT60580 £39.33
	Straight Track 2 m section	HALT60584 £65.52
	Straight Track 3 m section [max]	HALT60586 £87.17
[other lengths and curved sections available, please phone for details]		
	Modular Track Clip	HALT610931 £37.51
	Joint Bolts [per 10]	HALT63756 £16.09
[2 shouldered + 2 hex sets: nuts, washers – enough for one joint.]		
	Endstops [per 2]	HALT65730 £14.08

Halls T60 Anglia runners



Master Carrier



Wheeled Runner



Carrier to take swivel arm [swivel arm not included see page 232].

Halls T60 Anglia Runners

	code	price
Master Carrier [per 2]	HALT63750	£37.74
Master Carrier ball raced for scenery flat	HALT64348	£105.85
Master Carrier ball raced for swivel arm	HALT60517	£89.90
Wheeled Runner [per 10] [SWL 4 kg. Space 300 mm]	HALT62132	£26.40
Ball Raced Runner [per 10]	HALT60542	£48.03
Tab Hook [per 10] [for pic see page 225]	HAL3578	£9.13
Twin Hook [each] [for pic see page 225]	HAL1701E	£0.88

Halls T60 Anglia pulleys



Head Pulley



Return Pulley



Floor Fixing Pulley



Weighted floor pulley

Halls T60 Anglia Pulleys

	code	price
Head Pulley [handline]	HALT61188	£37.95
Return Pulley [handline]	HALT61187	£25.04
Floor Fixing Pulley [handline]	HALT61182	£51.81
Weighted floor pulley	HALT63758	£45.04

Halls T60 Anglia mounting



Overlap Clip



T60 Universal Fitting



Stud Hanger



Face Fixing Bracket



Deadline Suspension

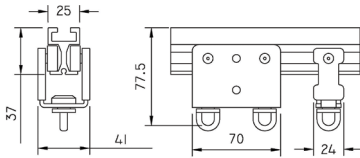
Halls T60 Anglia Mounting and Accessories

	code	price
Overlap Clip [per 2]	HALT63291	£16.70
T60 Universal Fitting [per 2]	HALT63753	£18.54
Stud Hanger to 48 mm Ø [per 2]	HALT63136	£31.76
"Z" Tube 48 mm to overlap track [per pair]	HALT610965	£25.28
Face Fixing Bracket [per pair]	HALT61181	£25.94
Deadline Suspension fitting [per 2]	HALT60963	£18.17
Black 6 mm x 8 plait polyester handline [per m]	ROP120	£1.02



T70 and 3-Way have been discontinued. But we do have spares on page 225.

Flints can provide advice & competitive quotations for supplying drapes as well! We can also quote for installing & maintaining tracks in the London area.



Erail A significantly improved version of the previous Unirail system. The track is a tough one-piece black aluminium extrusion available in lengths up to 6.1 m [20 ft]. Joins are made with a steel plate and grub screw in the top slot with a single roll pin in the base to ensure smooth running surfaces. The track can be rolled down to a 500 mm radius. Erail can be mounted by means of special M8 channel nuts in the top slot allowing easy connection to a hook clamp or M8 studding. Low friction ball-raced nylon runners ensure easy handling of the drapes. Centre opening drapes can be overlapped either by using overlap arms on the master carriers, or the pre-assembled centre opening unit. The track can also be corded for manual use or motorised by using the track mounted S-Drive [supplied with 10 m pendant].

- ✓ Ideal for small stages such as on cruise ships, conference centres, hotels and school halls
- ✓ Can be ordered to special radii with fast delivery times
- ✓ Sleek modern appearance
- ✓ Lower profile than most tracks
- ✓ Economically priced
- ✓ Can take up to 70 kg Uniformly Distributed Loads at 1 m centres
- ✗ Suitable for all but the very heaviest of stage curtains
- ✗ No scenery carriers or rearfold runners available
- ✗ Care should be taken when touring to protect long lengths from bending and edge damage.



Joint plate

Master runner with cord clamp

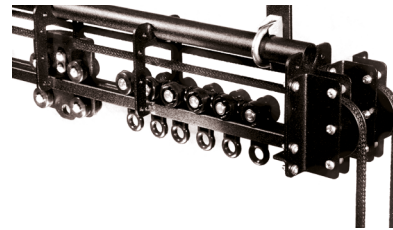
Hook clamp

Erail Track	code	list	price
Straight Track (up to 6.1 m sold per m)	EEEEERL01		£24.10
Curved Track (up to 6.1 m sold per m)	EEEEERL01C		£36.90
Joint Plate complete with Roll Pin	EEEEERL05		£9.70
Endstop	EEEEERL24		£9.00
Pre-assembled centre opening unit [3 m]	EEEEERL26C		£135.00

Erail Runners	code	price
2 Wheeled Runner	EEEEERL06	£7.70
12 Wheel Master Runner with Rope Clamp [WLL 30 kg]	EEEEERL07S12	£75.00
Overlap Arm	EEEEERL07A12	£15.00

Erail Pulleys	code	price
Head Pulley	EEEEERL09	£70.00
Return Pulley	EEEEERL10	£51.30
Foot Stirrup Pulley	EEETRA11	£41.00
Adjustable Floor Pulley	EEETRA12	£49.70

Erail Mounting and Accessories	code	price
Curved Cord Guide	EEEEERL19	£24.10
Head Pulley Cord Guide	EEEEERL21	£30.80
Girder Clamp	EEETRA13	£25.60
Hook Clamp for 50 mm tube/truss	EEEEERL14	£8.20
Deadline Fixing	EEETRA15	£18.00
Wall Bracket	EEETRA16	£25.00
Mounting Bracket	EEEEERL17	£8.20
M8 Attachment Nut	EEEM8ERAILNUT	£1.08
Studding set [M8x150 for use with ERL17 or ERL23]	EEETRA18	£7.20
Studding set [M8x150 direct to track]	EEEEERL18	£5.40
Curved Track Suspension Bracket	EEEEERL23	£12.30
Line Pick Up	EEEEERL25	£9.00
Overlap Clip	EEEEERL26	£10.50
8 mm x 8 plait polyester handline	ROP122A	per m £1.26
SDrive [motorised control system w/ 10 m pendant]	EEESDRIVE	£1,750.00
Wireless Controller	TRAWC	£360.00



Doughty Six Track This track was designed as competition to the Halls T60 track. They are remarkably similar. The Doughty barrel brackets are nicely designed to allow overlap tracks to hang centrally on the flying bar. They also came up with a bolt-on end plate [above] enabling the track to be cut to exact lengths without the need for onsite welding but Halls responded and now make one of these as well. Oh, the joys of competition!

- ✓ Ideal for schools and colleges
- ✓ Economically priced.
- ✓ Versatile modular system
- ✗ A bit fiddly for tours.



Spigot Plate

Doughty Six Track	code	price
Straight Track 500 mm section	DOUT63706	£27.86
Straight Track 1 m section	DOUT63708	£40.21
Straight Track 2 m section	DOUT63710	£69.61
Straight Track 3 m section [max]	DOUT63715	£99.00
Curved Track 90° 500 mm radius	DOUT63730	£80.43
Curved Track 90° 750 mm radius	DOUT63731	£92.79
Curved Track 90° 1 m radius	DOUT63732	£111.37
Six Track Spigot plate	DOUT63748	£2.70
Bolt-on End Plate [if cutting track]	DOUT63765	£13.15
Endstop [for walk along system]	DOUT63760	£6.95

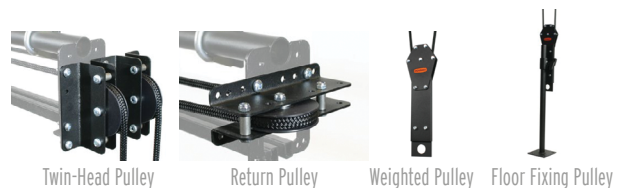


Endstop

Runners - plain or ball raced

Master Runner

Doughty Six Track Runners	code	price
Ball Raced Runner WLL 6 kg [use every 300 mm]	DOUT63756	£5.31
Plain Bearing Runner WLL 6 kg [use every 300 mm]	DOUT63757	£3.02
Master Runner	DOUT63755	£22.10

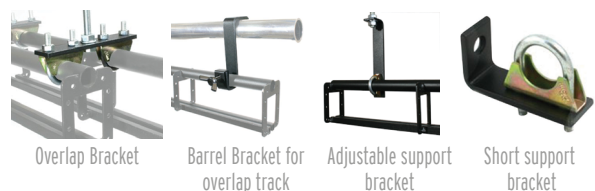


Twin-Head Pulley

Return Pulley

Weighted Pulley

Floor Fixing Pulley



Overlap Bracket

Barrel Bracket for overlap track

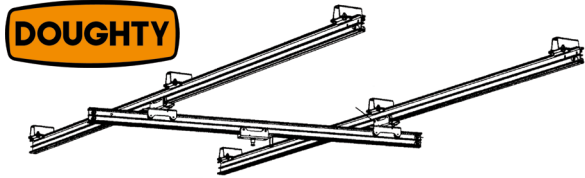
Adjustable support bracket

Short support bracket

Doughty Six Track Pulleys and Accessories	code	price
Twin-head Pulley	DOUT63776	£41.76
Return Pulley	DOUT63775	£25.51
Weighted Handline Pulley	DOUT63820	£41.43
Floor Fixing Handline Pulley	DOUT63825	£51.00
Overlap Bracket	DOUT63752	£7.58
Line Support [every 2.5 m]	DOUT63770	£32.49
Barrel Bracket for overlap track	DOUT63753	£13.57
Adjustable Support Bracket [takes 10 mm studding]	DOUT63750	£6.95
Short Support Bracket	DOUT63751	£6.58
Handline 8 mm x 8 plait polyester [per metre]	ROP122A	£1.26
Fixing Kit for Six Track [100 bolts nut and washers]	DOUT63795	£8.85

HEAVY-DUTY TRACKS

DOUGHTY



Studio Rail A light and extremely strong track system with several unique features. A pair of four-wheel double swivel carriages [above] allows an adjustable moving rail to be mounted to a pair of fixed parallel rails. The six-wheel carriage with a 28 mm receiver [left] has a SWL of a massive 100 kg. Fitted with a friction brake it stays where it's put. Use it for luminaires, monitors and pantographs etc. It has three points of safety: a 6 mm Ø pin, a sword pin, and finally, the lamp can be rotated

then locked in place with a Doughty knob. The cupped curtain brake [above] moves by means of an operator's pole, then twists to engage the brake. We stock the extrusions in natural aluminium.

- ✓ Versatile – used in theatres, schools, studios, nightclubs
- ✓ Takes luminaires, monitors, and pantographs
- ✗ Curtain runners rather expensive

Studio Rail track [Anodised black also available]

Standard Track Sections	code	price
Straight Track 2 m silver	DOUT84000	£63.56
Straight Track 3 m silver	DOUT84005	£93.71
Straight Track 4 m silver	DOUT84010	£127.11
Straight Track 6 m silver	DOUT84015	£189.39
Joiner Kit	DOUT84070	£12.77
Endstops [four]	DOUT84080	£9.45

Studio Rail Curved Track [Anodised black also available]

Curved Track Sections	code	price
Curved Track 90° section 750 mm radius silver	DOUT84017	£104.00
Curved Track 90° section 900 mm radius silver	DOUT84018	£125.84
Curved Track 90° section 1,050 mm radius silver	DOUT84019	£147.65
Curved Track 90° section 1,200 mm radius silver	DOUT84020	£157.92
Curved Track 90° section 1,350 mm radius silver	DOUT84025	£159.20
Curved Track 90° section 1,500 mm radius silver	DOUT84030	£163.71

Studio Rail runners & carriages



Cable Carriage

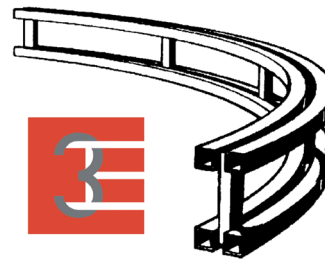
Rearfold Runner

Overlap Arm

Operator's Pole

Runners & Carriers	code	price
Cable Carriage [five]	DOUT84220	£43.63
Curtain Carriage [five]	DOUT84225	£34.80
6-Wheel Carriage + 28 mm TV Spigot Receiver	DOUT84205	£96.94
4-Wheel Carriage + 16 mm Spigot	DOUT84185	£39.48
6-Wheel Carriage with Swivel	DOUT84516	£150.15
Double Swivel Carriage	DOUT84215	£70.62
Cupped Curtain Brake	DOUT84230	£47.38
Operator's Pole 3.7 m open / 2 m closed	DOUT84249	£145.09

Studio Rail Mountings	code	price
Ceiling Bracket	DOUT84120	£20.49
Wall Bracket 200 mm	DOUT84105	£23.76
Wall Bracket 350 mm	DOUT84106	£27.61
Wall Bracket 500 mm	DOUT84107	£31.45
Rail to Tube Bracket Fitting	DOUT84180	£39.17



Triple E UniTrack

Our biggest selling track and the track that we choose for our own hire stock. UniTrack is a versatile modular track system, used widely for theatres, exhibitions, trade shows and rock and roll tours. Sections are available

in standard lengths of 2 m, 1 m, 500 mm and 250 mm. The design is such that the track sections stack neatly on trucks or in storage making this system the preferred choice for tours. Special curved sections are available to order and there are at least 16 ways of cording the track, with the option to add drive motors. A range of suspension fittings is available. Runners should generally be spaced at 300 mm intervals. Standard and curved runners have Working Load Limit of 25 kg, whilst master runners and scenery carriers have a WLL of 50 kg. Heavy-duty Carriers have a WLL of 125 kg.

- ✓ Industry favourite
- ✓ Stacks very neatly for storage
- ✓ Just one bolt to join lengths
- ✓ Takes scenery carriers including heavy-duty versions
- ✓ Huge range of roping methods including rearfold
- ✓ Extra parts may be hired for the occasional show requiring many tracks. [page 367]
- ✓ Can take up to 400 kg Uniformly Distributed Loads at 1 m centres
- ✗ Takes up quite a lot of height so not ideal for height-restricted venues
- ✓ Well proven
- ✓ Ideal for touring
- ✓ Motorised versions available

UniTrack Standard Track



Standard Track Sections	code	price
Straight Track 250 mm	EEETRA01	£23.60
Straight Track 500 mm	EEETRA02	£28.70
Straight Track 1 m	EEETRA03	£43.10
Straight Track 2 m	EEETRA04	£82.00
Joint Set	EEETRA05	£6.70

UniTrack Curved Track

Curved Track Sections	code	price
Curved Track 90° section 1 m radius	EEETRA1090	£158.90
Curved Track 90° section 1.5 m radius	EEETRA1590	£205.00
Curved Track 90° section 2 m radius	EEETRA2090	£256.30
Curved Track 90° section 3 m radius	EEETRA3090	£384.40

UniTrack Runners



Standard Raced Runner



Rearfold Runner



Overlap Arm

Runners	code	price
Standard Raced Runner, 2 wheels	EEETRA06	£12.30
Raced Runner for curves, 4 wheels	EEETRA06C	£17.40
Rearfold Runner	EEETRA06R	£19.00
Master Runner	EEETRA07	£53.80
Master runner overlap arm	EEETRA07A	£13.10
Rearfold Accessory	EEETRA08	£6.20

UniTrack Carriers



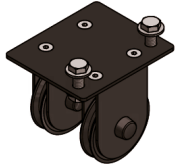
Scenery Carrier Bottom Part Only



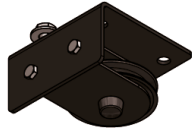
Heavy-duty Scenery Carrier Top Part Only

Carriers	code	price
Scenery Carrier top only [WLL 50 kg]	EEETRA28A	£52.80
Scenery Carrier bottom only	EEETRA28B	£50.00
Scenery Carrier heavy-duty top only [WLL 125 kg]	EEETRA28AHD	£150.00

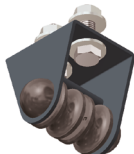
UniTrack Pulleys



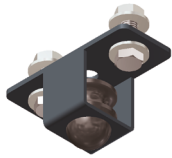
Header Pulley for Overlap Tracks



Return Pulley for Overlap Tracks



Head Pulley for Single Tracks



Return Pulley for Single Tracks



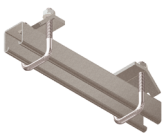
Foot Stirrup Pulley



Adjustable Floor Pulley

Pulleys	code	price
Head Pulley [for overlap track]	EEETRA09	£56.40
Return Pulley [for overlap track]	EEETRA10	£42.00
Head Pulley [for single track]	EEETRA31H	£31.30
Return Pulley [for single track]	EEETRA31R	£26.70
Foot Stirrup	EEETRA11	£41.00
Adjustable Floor Pulley	EEETRA12	£49.70

UniTrack Suspension Fittings



Girder Clamp



Hook Clamp



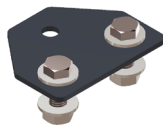
Deadline Fixing



Studding Set



Wall Bracket



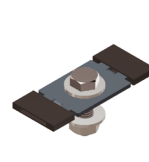
Offset Plate

Suspension Fittings	code	price
Girder Clamp	EEETRA13	£25.60
Hook Clamp, 38-52 mm	EEETRA14	£30.00
Deadline Fixing	EEETRA15	£18.00
Wall Bracket	EEETRA16	£25.00
Offset Plate [new design]	EEETRA17	£6.70
Studding Set [M12 x 150 mm]	EEETRA18	£7.20

UniTrack Components



Endstop



Flat Endstop



Line Pick Up



Overlap Clip Set

Components	code	price
Endstop	EEETRA24	£8.70
Flat Endstop	EEETRA24S	£8.70
Line Pick Up	EEETRA25	£8.70
Overlap Clip [two needed for overlap]	EEETRA26	£13.60

UniTrack Curved Track Fittings



Curve Cord Guide



Curve Head Pulley



Curve Return Pulley



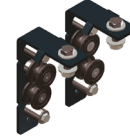
Curve Master Runner

Curved Track Components	code	price
Curve Cord Guide	EEETRA19	£36.90
Curve Master Runner	EEETRA20	£90.00
Curve Head Pulley	EEETRA21	£118.90
Curve Return Pulley	EEETRA22	£50.00
Curve Suspension Bracket	EEETRA23	£23.00

UniTrack Side Cord System



Side Cord Guide



Centre Overlap Divert



Side Cord Pulley Set



Side Cord Rope Clamp

Side Cord System	code	price
Side Cord Guide	EEETRA32	£51.00
Side Cord Centre Overlap Diverter	EEETRA33	£102.50
Side Cord Head & Pulley set, 3 part	EEETRA34	£101.50
Side-Cord Rope Clamp for Master Runner	EEETRA35	£26.70

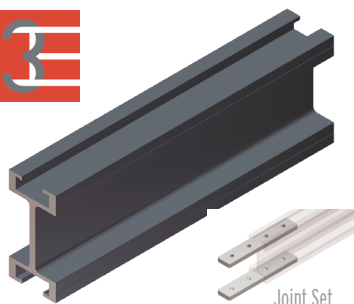
Handlines Choose the black polyester cord for all normal use, it makes for a very high quality and reliable handline. If you are using scenery carriers under heavy load on long tracks it can be advantageous to choose a rope with virtually no stretch. Flints stocks a Dyneema rope with a matt black polyester cover which is indistinguishable from the polyester rope except its working stretch is less than 1.5%. The Dyneema Pro is the best choice under very heavy loads because it does not have a polyester cover and the master carrier clamps directly to the line. The working stretch on this line is below 1.3% [Breaking load: 5,000 kg!]. Most popular marked with a for easy restocking.

Handline	code	per m	code	per 100 m
Black Polyester Cord [handline] 8mm	ROP122A	£1.26	ROP122AD	£98.00
Black Dyneema [polyester cover] 8mm	ROP438	£4.03	ROP438D	£293.34
Dyneema Pro [pure Dyneema] 8mm	ROP150508	£6.51	ROP150508D	£511.46

TDrive Motor The Triple E TDrive is suitable for use with both their UniTrack and UniBeam systems. With variable speed controls to open/close and stop it provides a clean solution. Supplied with a 10 m pendant. Specifications: Pulls up to 300 kg on straight, 200 kg on curve.

Motors and Hand Drives	code	Tradeline
TDrive motor	EEETDRIVE	£2,950.00
Wireless Controller	TRAWC	£360.00

Hand Drives also available - call us for details and a quote.



UniBeam combines track and truss in one unit to provide a truly adaptable track system. Particularly appropriate for permanent installation, especially those that host a number of repertory productions, this modular system is suitable for anything from

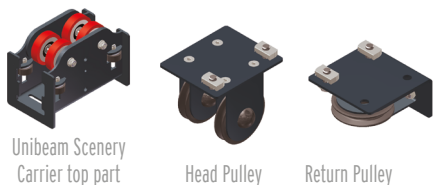
rock concerts to opera to theatre. With its symmetrical I-beam shape and solid construction, UniBeam is a complete system which accepts an extensive range of accessories. Capable of large spans between two suspension points, UniBeam makes an extremely accommodating fly bar and also lends itself to large curved systems, particularly cycloramas. To motorise the system, use the TDrive listed on the previous page.

- ✓ Same profile as UniTrack so many of the accessories are interchangeable
- ✓ The continuous slot along the top and bottom will take standard Unistrut fittings
- ✓ The Uniring accessory locks to the channel with a quick 90° twist and allows drapes to be quickly attached to the underside of the beam
- ✓ Takes Heavy-Duty Scenery Carriers allowing Safe Working Loads of up to 385 kg
- ✓ Takes up to 1,070 kg of Uniformly Distributed Loads at 1 m centres

UniBeam Standard Track

UniBeam Track	code	price
Straight Track per 1 m [up to 6.1 m]	UBM01	£42.50
Curved Track [min. radius 2 m]	UBM01C	£70.00
Joint Set	UBM05	£35.90
Endstop	UBM24	£8.70
Flat Endstop	UBM24S	£8.70

UniBeam Carriers and Pulleys



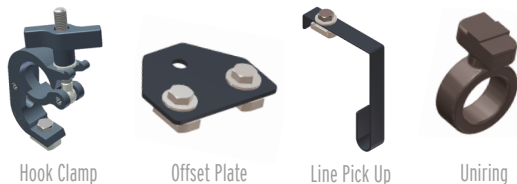
UniBeam Scenery Carrier top part

Head Pulley

Return Pulley

UniBeam Carriers and Pulleys	code	price
UniBeam Scenery Carrier top part [WLL 385 kg]	UBM28A	£240.90
Also takes UniTrack runners and accessories [see previous page]		
Head Pulley	UBM09	£55.00
Return Pulley	UBM10	£41.00
Single Track Head Pulley	UBM31H	£30.50
Single Track Return Pulley	UBM31R	£26.00

UniBeam Mounting and Accessories



Hook Clamp

Offset Plate

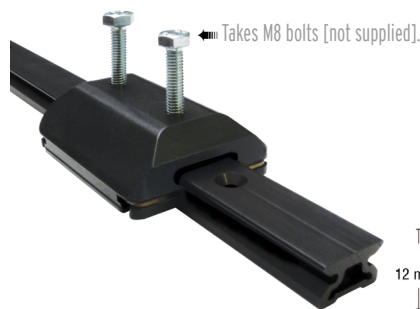
Line Pick Up

Uniring

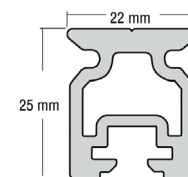
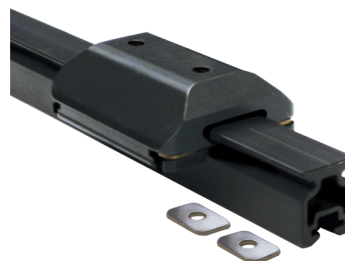
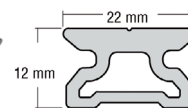


UniBeam Mounting and Accessories	code	price
Hook Clamp for 50 mm truss	UBM14	£26.00
Offset Plate	UBM17	£6.50
Studding Set [150 mm c/w nuts, channel nut and washers]	UBM18	£7.20
Line Pick Up	UBM25	£8.50
Overlap Clip	UBM26	£13.25
Uniring	URING	£2.50

HARKEN TRACK



Slippery Silky Track for all you Stage Mechanics



Ball Bearing Cars and Track These super smooth free-running cars and tracks are used in everything from sliding seats to window washing apparatus and from exercise machines to acrobatics. Loads move virtually free of any friction. The recirculating Delrin ball bearings are held captive so the cars can be easily removed from the tracks.

The utility cars are derived from the toughest and best quality marine equipment but are simplified ready to accept your own customisation. The flat top surface is provided with two tapped M8 holes at 38 mm centres ready to accept your bolts or eye nuts.

The track comes in either low-profile or a tough beam-section with built-in strength for spanning gaps.

SPECIFICATION: Cars and bearing races machined from 6061-T6 Aluminium. Track extruded from high grade 6061-T6 aluminium. Black Hardcote anodising makes them extremely durable. If the tracks are ordered as set lengths [see below] both ends will be black anodised. The track can be easily cut but the cut end will not be anodised. Smaller and larger tracks are available - please phone our Rigging Manager for details.

- ✓ Use them for smooth-running stage machinery
- ✓ Perfect for sliding trap covers
- ✓ Friction-free scenery sliders
- ✓ Indoors or outside
- ✓ Maintenance-free - just flush with clean water!
- ✓ Tracks can be supplied rolled to compound curves - please phone our Rigging Manager for details

SAFETY

Breaking Load	Safety Factor	Safe Working Load
1,134 kg	19.89 to 1	57 kg

Harken Track	code	price
High Beam Track 3.6 m section	HAR272536	£211.76
Low Level Track 1 m section	HAR27201	£46.37
Low Level Track 1.8 m section	HAR27202	£74.47
Low Level Track 3.6 m section [max]	HAR27203	£169.48

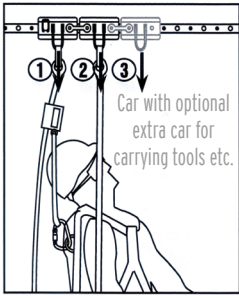
Harken Cars	code	price
Utility car M8 threads	HARHC8473	£84.35

Harken Endstops	code	price
Endstops [Low level Track] Set of two	HARE2200	£10.83
Endstops [High Beam Track] Set of two	HAR264	£35.13

TRACK ACCESS SYSTEM



CE Certified Car with optional pinstop



Car with optional extra car for carrying tools etc.



Track Access System This fully certified system provides a very discreet and smooth running attachment system for harness lanyards suitable for use inside or out. The track can be provided rolled to suit curved applications [such as attachments to theatre balcony soffits to provide a moving attachment for focussing lanterns or general maintenance]. Optional extra cars [3] can be attached to carry tool kits etc. Pinstops can be selected to anchor the car in fixed positions. Please phone us to discuss your requirements in detail or to arrange a site visit. Certification: CE EN 795.

SPARES & ACCESSORIES

Track Spares Flints has a wide experience of tab tracks based on thirty-five-years of theatre work. We can normally recognise a component from a digital photo or sketch. Even very old components can often be supplied. If you have a troublesome track we can provide remote assistance, or if required we can visit your stage to either effect immediate repairs, or suggest a course of action. Below we have listed some of the common components and spares that we can supply.



Twin Hook



Tab Hook



T70 Wheeled Runner



T70 Ball Raced Runner



T70 Master Runner

Halls Common Components and Spares	code	price
Twin Hooks [each]	HAL1701E	£0.88
Tab Hook [per 10]	HAL3578	£9.13
T70 Wheeled Runner SWL 7kg Space 300 mm [per 10]	HAL714	£47.26
T70 Ball Raced Runner SWL 9kg Space 300 mm [per 10]	HAL713	£88.85
T70 Master Runner [per 2]	HAL71105	£111.86



Unirail Clip



Stage Track Wheeled Runner

Stage Track & Unirail Components and Spares	code	price
Unirail Clip	ROPGBC	£1.50
Stage Track Wheeled Runner	SAT16	£3.85



3-way Plain Wheel Runner



3-way Plain Wheel Runner

3-Way Track Components and Spares	code	price
Plain Wheel Runner	EEE2W06P	£3.80
Ball Raced Wheel Runner	EEE2W06C	£6.90

Handlines & Chains	code	per 10 m
Medium weight Jack Chain	WIR862	£9.45
Heavyweight Jack Chain	WIR861	£16.27

Ropes	code	per 100 m drum
6 mm No. 4 Jute Sash [economical option for T60]	ROP042MD100	£19.98
8 mm No. 6 Jute Sash [economical option for T70]	ROP044MD100	£30.39

	code	per m	code	per 100 m
Black Polyester Cord [handline] 8 mm	ROP122A	£1.26	ROP122AD	£98.00
Black Dyneema [polyester cover] 8 mm	ROP438	£4.03	ROP438D	£293.34
Dyneema Pro [pure Dyneema] 8 mm	ROP150508	£6.51	ROP150508D	£511.46

TRACK LUBRICANTS



McLube™ High Performance Dry Lubricant This easy-to-apply, fast-drying lubricant instantly bonds to clean, dry surfaces, repelling dirt, and significantly reducing friction. High Performance Dry Lubricant lasts significantly longer than Teflon® additives, oil- or wax-based lubricants and is environmentally friendly with no chlorofluorocarbons [CFCs], petroleum, or poison-emitting toxins. Use on curtain tracks, sliding traps, sliding doors, cloths and anywhere friction is a problem.

- ✓ Can be used directly onto cloth with virtually no marking
- ✓ No sticky grease or dirty oil
- ✓ Solves many friction problems making your show more reliable, slicker and faster!

McLube Dry Lubricant	size	code	price
	300 ml	HARML08	£16.70



P.T.F.E. Spray - Amberglide This P.T.F.E. lubricant is a multi-purpose high quality lubricant enriched with P.T.F.E. for enhanced durability in high wear applications. It cleans, waterproofs and reduces friction. Particularly suitable for tab tracks. I have seen really troublesome tracks converted to smooth running ones with just one quick spray!

Lubricants	size	code	price
Amberglide P.T.F.E. Spray	400 ml	SAF516	£17.80