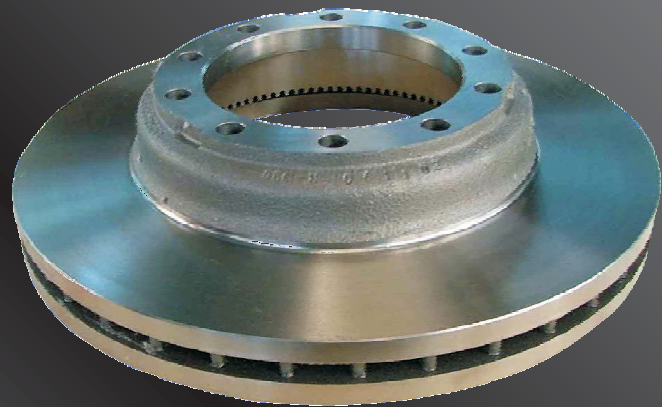


**HIGH-VOLUME
BRAKE DRUM,
ROTOR, AND
HUB CATALOG
AND
INTERCHANGE**



**FOR TRUCKS,
TRAILERS, BUSES,
AND OTHER
EQUIPMENT**



**D
U
R
A
B
R
A
K
E**

WE MAKE OVER 2,000 DIFFERENT BRAKE DRUMS

TABLE OF CONTENTS

<i>The DuraBrake Advantage</i>	3
<i>Chart of Drum Styles</i>	4
<i>Information Required for Drums Not Listed</i>	4
<i>High-Volume Brake Drum Details</i>	5 - 19
<i>Webb Interchange</i>	20 - 23
<i>Gunite Interchange</i>	24 - 26
<i>Rotor Details</i>	27 - 28
<i>Terms & Conditions</i>	Inside Back Cover

DuraBrake makes brake drums and rotors for the following applications among others:

• **Truck Manufacturers**

- *AM General*
- *Chevrolet/GMC*
- *Dodge*
- *Ford*
- *Freightliner*
- *Hino*
- *Isuzu*
- *Kenworth*
- *Lodal*
- *Mack*
- *Mitsubishi Fuso*
- *Navistar*
- *Oshkosh*
- *Peterbilt*
- *UD*
- *Volvo*
- *Western Star*

• **Trailer Manufacturers**

- *Fruehauf*
- *Great Dane*
- *Trailmobile*
- *Utility*
- *Many others*

• **Bus Manufacturers**

- *Alexander Dennis*
- *Bluebird*
- *Eagle*
- *Flxible*
- *Gillig*
- *MCI (Prevost)*
- *NABI*
- *Neoplan*

- *Optare*
- *Optima Bus*
- *Orion*
- *Thomas Bus*
- *Van Hool*

• **Axle Manufacturers**

- *ArvinMeritor (Rockwell)*
- *Dana*
- *Eaton*
- *Hendrickson*
- *K-B Axle*
- *M.A.N.*

• **Brake Drum and Rotor Manufacturers**

- *ArvinMeritor (Rockwell, Dayton)*
- *Bendix*
- *Budd*
- *Conmet*
- *Erie*
- *Euclid*
- *Gunit*
- *KIC (Reyco)*
- *Motor Wheel (Hayes)*
- *Wagner*
- *Webb*

• **Off Highway Equipment Manufacturers**

- *Caterpillar*
- *Clark*
- *Crane Carrier*
- *Hyster*
- *Terex*

The DuraBrake Advantage...Why we are the Gold Standard

DuraBrake acquired the former brake drum division of Durametal, a name widely recognized in the heavy-duty aftermarket since 1948. Since then, we have maintained the original superior specifications, and we have improved the quality, design, versatility, availability, and distribution of the brake drums. We have expanded that success to new products and that is why we are the Gold Standard in Brake Drums, Rotors, and Hubs.

DuraBrake's Superior Production Process:

- Our molding process allows: precision molding, better control on dimensions, lower cost patterns, and better surface finish
- Our melting process is ideal for brake drum metallurgy and allows: homogeneous metal, cleaner metal, less air pollution, increased braking performance, better machinability, optimal hardness and higher tensile strength
- We machine the castings with CNC lathes for dimensional accuracy and CNC drilling for perfect stud hole line-up
- Parts are strictly produced to drawings engineered specifically for each part number

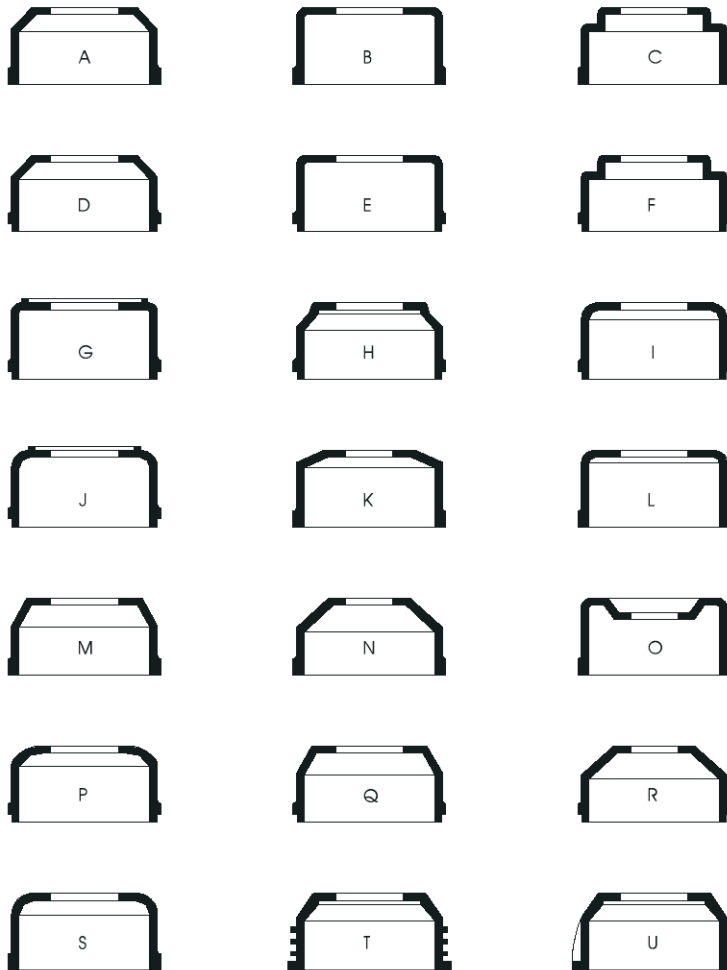
Engineered for Optimal Performance

- High tensile strength for specific heavy-duty applications
- Carbon content 10% greater than competitors, allowing higher strength and better resistance to heat checking, braking performance, and wear characteristics.
- Alloys added for creep resistance, strength, and longevity
- Transit bus drums have ribs and vents for better cooling and strength
- Increased weight for reduced noise, larger heat sink, higher longevity and shorter stopping distances
- Tight dimensional tolerances for proper drum piloting
- Optional features include: balancing, higher alloys, undersized or oversized brake face diameter, fully machined, sensor teeth for anti-lock mechanisms, tapped holes for sensors, and brake face treatment

The DuraBrake Advantage

- Price competitiveness
- Quick delivery and will-call pick ups from distribution warehouses
- Certified Minority-Owned DBE, useful for government customers and government contractors
- Flexible manufacturing and design options for customization. WE MAKE OVER 2,000 BRAKE DRUM PART NUMBERS
- Company run by engineers that believe in a quality product and not reducing costs by reducing quality
- Production drums made at TS-16949 factories
- High quality brake drums made with superior mechanical designs, chemistries and metallurgy proven at reputable braking laboratories

Chart of Drum Styles



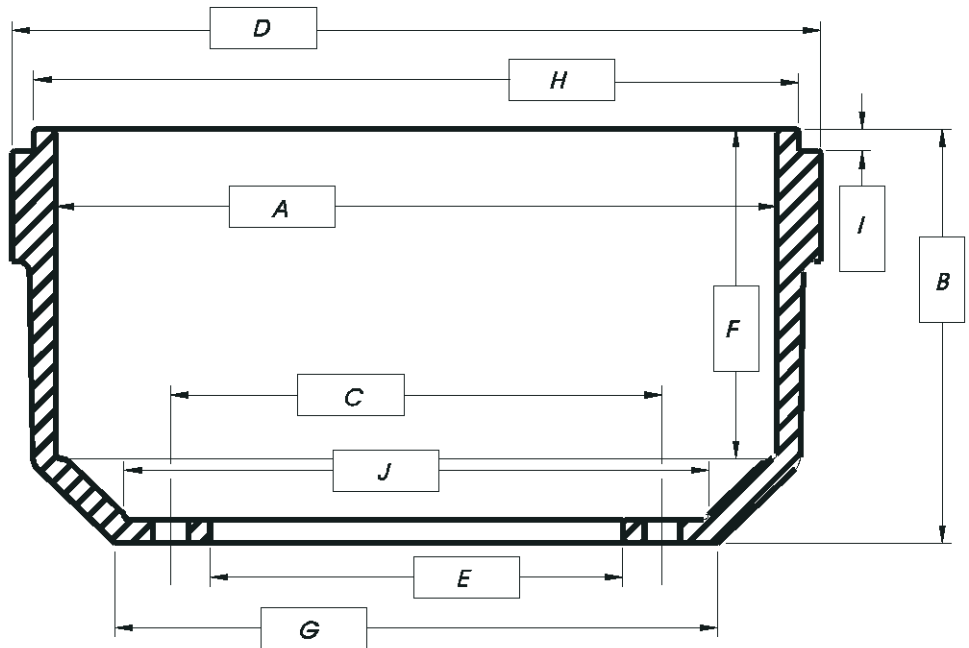
Information Required for Drums not Listed

Type of Drum (as shown on chart)

Dimensions:

- A - Inside Diameter
- B - Overall Depth
- C - Bolt Circle Diameter & Number of Studs
- D - Outside Diameter
- E - Hub Pilot Diameter
- F - Brake Face Width
- G - Back Face Width
- H - Dust Shield Diameter
- I - Dust Shield Depth
- J - Out Board Pilot Diameter

*Drums made to customer specifications are not returnable



Part No.	Weight	Drum Type	Brake Face Dia.	Overall Depth	Brake Face Width	Hub Pilot	Bolt Circle	Bolt Holes No.	Bolt Holes Dia.	Special Information
1201	65	A	12.00	8.50	6.50	6.25	8.75	6	0.81	Spot face 6 holes 1.87
1202	65	A	12.00	8.50	6.50	7.13	8.75	6	0.81	Spot face 6 holes 1.87
1203	75	A	12.00	9.19	7.19	7.13	8.75	6	0.81	Spot face 6 holes 1.87
12055	50	F	12.60	7.00	3.69	6.77	8.75	6	0.89	
1207	60	B	12.00	7.75	6.75	7.25	10.00	6	0.66	Spot face 6 holes 1.87
1208	47	B	12.25	6.81	6.25	8.50	10.00	6	0.66	Spot face 6 holes 1.87
1209	62	A	12.25	9.00	6.50	6.25	8.75	6	0.81	Spot face 6 holes 1.87
1210	70	A	12.25	9.00	6.50	7.13	8.75	6	0.81	Spot face 6 holes 1.87
12110	60	B	12.25	7.44	6.50	8.50	10.00	6	0.66	
12121	60	D	12.25	7.13	5.38	7.13	8.75	10	0.81	Spot face 10 holes 1.87
12125	60	D	12.25	7.13	5.38	6.25	8.75	6	0.81	Spot face 6 holes 1.87
12126	60	D	12.25	7.13	5.38	7.13	8.75	10	0.81	Spot face 6 holes 1.87
12127	60	F	12.13	7.12	2.50	5.19	6.50	8	0.69	
12128	70	D	12.25	9.50	7.75	6.25	8.75	10	0.81	Spot face 6 holes 1.87
12129	60	D	12.25	7.13	5.38	6.25	8.75	10	0.85	Spot face 10 holes 1.87
1213	65	A	12.25	7.50	5.63	6.25	8.75	6	0.81	Spot face 6 holes 1.87
12140	60	B	12.25	6.50	5.94	7.25	10.00	6	0.66	Spot face 6 holes 1.87
12153	60	D	12.25	7.63	6.37	7.50	8.75	6	0.81	Line up stud w/ slot
12153A	60	D	12.25	7.50	6.25	7.50	8.75	6	0.53	Line up stud w/ slot
1216	60	B	12.25	7.44	6.50	6.75	8.75	6	0.66	
1217	65	A	12.00	8.50	6.50	6.25	8.00	5	0.81	
12172	65	D	12.25	8.19	6.20	6.25	8.75	6	0.81	Spot face 6 holes 1.87
12173	28	F	12.13	5.00	3.00	6.50	8.00	5	0.89	
1218	75	A	12.00	9.19	7.19	7.13	8.75	6	1.06	Spot face 6 holes 1.87
12190	65	A	12.25	7.31	5.63	7.13	8.75	10	0.81	
1220	80	A	12.00	10.50	6.75	6.75	8.75	6	0.81	Spot face 6 holes 1.87
1221	71	A	12.00	9.19	7.19	7.25	8.75	6	0.81	Spot face 6 holes 1.87
1226	75	M	12.25	9.25	6.75	7.13	8.75	6	0.81	Spot face 6 holes 1.87
1227	75	M	12.25	9.25	6.25	7.13	8.75	6	0.94	Spot face 6 holes 1.87
12306	38	C	12.60	5.81	3.56	5.70	8.00	5	0.75	
12311	50	O	12.00	4.75	5.38	6.44	7.25	8	0.38	
12330	50	B	12.00	5.63	5.25	8.25	9.25	8	0.53	
12365	78	E	12.25	9.13	8.41	7.25	8.75	6	0.81	
12366	78	E	12.25	8.63	8.33	7.25	8.75	8	0.81	
12410	75	A	12.25	10.47	8.13	7.13	8.75	6	0.81	Spot face 6 holes 1.87
1243	80	A	12.25	10.75	8.13	6.25	8.75	6	0.94	Spot face 6 holes 1.87
12432	55	U	12.61	7.00	3.69	6.77	8.75	6	0.89	
12437	41	B	12.25	6.38	5.69	7.12	8.75	6	0.66	
12440	75	A	12.25	10.47	8.13	7.13	8.75	10	0.81	Spot face 10 holes 1.87
1250	40	M	12.50	5.88	3.00	6.75	8.75	6	0.81	
12506	66	B	12.25	8.63	7.81	7.13	8.75	6	0.81	
12510	66	B	12.25	8.63	7.81	7.13	8.75	10	0.81	
12592	40	Q	12.41	5.91	3.56	7.88	9.84	6	0.81	
12595	50	H	12.41	6.44	3.58	6.29	8.75	10	1.03	
12617	75	L	12.25	8.88	8.06	8.50	10.00	6&3	0.66	6 holes 0.66 & 3 holes 0.66
12628	78	D	12.25	9.06	7.81	7.12	8.75	10	0.81	
12636	59	A	12.25	7.44	6.25	7.00	8.25	6&6	0.66	6 holes 0.53 & 6 holes 0.66
12637	73	L	12.25	9.06	8.06	7.00	8.25	6&6	0.66	6 holes 0.66 & 6 holes 0.53
12638	65	L	12.25	7.50	6.50	7.50	8.75	6	0.53	Line up 1st hole w/ notch
12680	100	E	12.25	11.22	9.95	9.00	10.83	8	0.97	
12709	25	B	12.00	4.13	3.63	4.75	6.50	8	0.69	
12800	53	C	12.61	7.28	5.31	6.45	8.75	6	0.88	
12880	55	H	12.50	6.12	2.89	6.28	8.75	6	1.03	
12960	45	O	12.00	4.75	5.38	6.44	7.25	12	0.44	
1297	25	B	12.50	3.63	3.33	10.25	11.25	12	0.56	
12998	66	B	12.25	8.63	7.81	7.13	8.75	6	0.81	
12999	70	A	12.25	9.25	6.75	7.13	8.75	10	0.81	
13012	100	Q	14.17	9.45	7.21	8.85	10.83	8	0.97	4 C'bore all holes & 4 tapped holes
13013	100	Q	14.17	9.13	7.13	8.66	10.83	8	0.93	2 C'sunk holes & 1 tapped hole
13037	51	C	13.00	6.44	3.06	4.59	6.50	8	0.56	2 mtg holes 0.437
13038	51	C	13.00	6.44	3.06	4.59	6.50	8	0.63	2 mtg holes 0.437
13111	32	D	12.80	4.57	3.47	10.04	11.02	6	0.52	(4) M12x1.25
13112	36	D	12.80	5.35	4.26	10.04	11.02	6	0.52	(4) M12x1.25
13113	38	R	13.00	4.25	2.48	3.94	5.50	5	0.63	
13114	43	D	12.80	6.20	5.16	10.03	11.02	6	0.51	(4) M12x1.25 holes

Part No.	Weight	Drum Type	Brake Face Dia.	Overall Depth	Brake Face Width	Hub Pilot	Bolt Circle	Bolt Holes No.	Bolt Holes Dia.	Special Information
13125	40	C	13.00	7.88	3.13	5.19	6.50	8	0.69	
1313	38	R	13.00	4.75	3.00	4.88	6.00	6	0.42	
13170	48	F	14.00	7.00	3.00	7.13	8.75	6	0.81	
13174	39	H	14.13	6.47	4.06	6.00	8.00	5	0.88	
13175	46	H	14.13	7.50	4.00	5.65	8.00	5	0.81	3 Countersunk holes
13243	33	D	13.00	3.38	2.50	6.13	11.25	10	0.88	
13250	30	H	13.00	5.42	3.20	4.60	6.50	8	0.56	Extra 2 holes
13290	65	F	14.00	7.59	2.95	7.13	8.75	6	0.81	
13303	25	E	14.00	3.50	2.59	10.00	11.00	5	0.53	
13574	40	H	14.13	5.38	2.75	6.25	7.25	6	0.63	
13632	60	F	14.00	8.03	3.42	7.13	8.75	6	0.81	
13717	36	C	13.00	8.70	4.02	5.20	6.50	8	0.69	
13845	33	D	14.00	4.00	3.00	4.61	5.50	6	0.50	6 holes 0.50 (5.5 BC) & 6 holes 0.50
13906	45	F	14.00	7.12	3.00	6.44	8.00	5	0.81	
13911	34	H	14.13	5.94	3.30	6.75	8.00	5	0.91	
13918	65	F	14.00	7.56	2.82	6.44	8.00	5	0.81	
1401	80	H	15.00	8.44	5.50	8.69	11.25	10	1.03	5 mtg holes 0.56 & outboard pilot
14011	110	E	15.50	9.25	7.68	11.06	13.19	10	0.98	2 mtg holes M14x2 tapped
14012	100	E	15.00	7.31	6.68	11.18	13.19	10	1.06	2 mtg holes 0.52 & (2)M14x2 tapped
14013	90	E	15.50	10.63	8.75	11.06	13.19	10	0.98	
14015	105	H	15.00	9.41	5.13	6.75	8.75	6	0.84	3 mtg holes 0.53
14016	85	E	15.00	10.25	7.88	8.70	10.81	8	0.87	2 holes 12MMx1.25 tapped
14017	85	E	15.00	10.25	7.44	11.06	13.19	10	1.03	2 holes M12x1.5 tapped
14018	35	E	15.00	4.14	3.56	10.00	11.00	5	0.53	
1402	85	F	15.00	8.25	5.44	6.45	8.75	10	0.75	3 mtg holes 0.53 & outboard pilot
14025	110	E	15.00	9.09	8.59	11.06	13.19	10	1.04	
14026	110	E	15.00	9.25	8.62	11.22	13.19	10	0.89	2 holes M12x1.75 tapped
14030	120	U	15.00	8.75	6.70	9.44	11.25	10	1.31	5 mtg holes 0.56 & notched for
14038	128	U	15.13	8.65	6.69	9.44	11.25	10	1.31	5 mtg holes 0.56 & notched for
14039	145	H	15.13	8.66	6.72	9.44	11.25	10	1.31	5 mtg holes
14040	175	U	15.00	12.44	10.56	9.44	11.25	10	1.31	5 mtg holes 0.56 & notched for
14048	188	U	15.13	12.38	10.66	9.44	11.25	10	1.31	5 mtg holes 0.56 & notched for
14049	190	M	15.13	12.38	10.58	9.44	11.25	10	1.31	5 mtg holes 0.56
1405	98	K	15.00	7.63	6.38	6.25	8.75	6	0.81	Outboard pilot 10.5
14051	72	M	15.00	6.94	4.33	8.36	11.25	10	1.31	
14055	101	F	15.00	9.31	7.50	9.38	11.25	10	0.81	
14057	55	D	15.00	6.53	3.97	9.44	11.25	10	1.31	
1406	55	E	15.00	6.25	5.56	11.25	12.75	5	0.66	
14061	100	E	15.00	5.81	5.20	11.25	12.75	5	0.66	
1407	75	D	15.00	6.06	4.19	9.00	11.25	10	1.25	
14072	45	I	15.00	4.31	3.56	9.00	10.50	5	0.53	
14078	70	A	15.00	5.26	4.31	9.50	11.25	6	0.78	
1408	60	P	15.00	5.63	4.13	7.50	9.00	5	0.53	
14084	80	E	15.00	9.03	6.34	10.94	13.19	10	1.25	
14085	110	E	15.00	9.29	7.50	11.22	13.19	10	0.91	2 mtg holes 0.44 & (2)M12x1.75 tap
14086	92	E	15.00	9.15	7.40	11.22	13.19	10	0.91	
14088	55	F	15.00	5.75	3.94	8.75	11.25	10	0.81	3 mtg holes 0.53
14090	95	B	15.00	7.38	6.88	11.25	12.75	5&6	0.66	
14091	77	I	15.00	8.53	7.83	11.25	13.19	10	1.00	
14092	80	E	15.00	7.68	6.50	8.25	9.25	8	0.50	
14093	88	E	15.00	8.13	7.69	10.19	11.63	10	0.63	
14094	70	A	15.00	6.13	4.38	9.50	11.25	6	0.78	Notched for sensor
14097	98	H	15.00	9.98	7.36	8.53	11.25	10	0.78	
14098	98	H	15.00	9.98	7.36	9.00	10.83	8	1.00	
14100	90	I	15.00	8.38	7.38	8.66	11.25	10	0.81	
14101	60	F	15.00	6.75	4.00	7.50	9.00	5	0.50	
14104	66	D	15.00	6.47	4.44	6.00	8.00	5	0.88	
14105	66	H	15.00	7.08	4.75	7.19	8.75	10	0.81	
14106	85	A	15.00	8.50	6.56	9.75	11.25	10	0.81	
14108	91	H	15.00	9.91	7.62	9.50	11.25	10	0.81	
1411	75	F	15.00	7.50	4.50	6.06	8.75	6	0.81	3 mtg holes 0.34 & outboard pilot
14111	70	D	15.00	7.56	5.50	9.44	11.25	10	1.25	
14112	70	D	15.00	7.44	5.50	9.44	11.25	10	0.81	
14113	85	H	15.00	8.50	5.50	6.44	8.75	6	1.25	3 mtg holes 0.53 & outboard pilot
14115	70	N	15.00	7.44	5.25	9.00	11.25	10	1.25	

Part No.	Weight	Drum Type	Brake Face Dia.	Overall Depth	Brake Face Width	Hub Pilot	Bolt Circle	Bolt Holes No.	Bolt Holes Dia.	Special Information
14116	83	Q	15.00	9.00	6.50	9.75	11.25	5	0.66	
14118	90	H	15.00	9.06	6.38	8.75	11.25	10	0.81	5 mtg holes 0.53 & outboard pilot
14119	108	H	15.00	10.59	7.75	9.00	11.25	10	0.65	Outboard pilot 13.38
14120	60	G	15.00	5.94	5.38	10.63	12.00	5&6	0.66	Outboard pilot 13.25
14121	65	I	15.00	5.56	4.00	7.00	8.00	5	0.52	
14124	75	D	15.00	7.88	4.50	9.44	11.25	10	0.81	
14125	85	A	15.00	8.13	5.50	9.44	11.25	10	0.81	
14126	69	H	15.00	5.13	4.25	9.00	11.25	10	0.81	
1413	70	K	15.00	6.56	4.56	6.25	8.75	6	0.81	
14139	80	G	15.00	8.38	7.50	11.25	12.75	5&6	0.66	Step hub pilot 14.25
14140	75	B	15.00	8.06	7.50	11.25	12.75	5	0.66	
14150	70	F	15.00	8.25	5.44	6.44	8.75	6	0.81	3 mtg holes 0.343 & outboard pilot
14154	52	E	15.00	6.06	5.00	9.50	11.25	10	1.25	
14155	83	F	15.00	9.00	6.69	7.50	8.75	6	0.81	
14156	110	H	15.00	9.81	6.50	9.00	11.25	10	1.31	
14158	82	Q	15.00	8.91	4.40	9.00	11.25	10	1.31	
14159	75	F	15.00	8.38	6.38	9.00	11.25	10	1.31	
1416	70	E	15.00	4.53	4.00	10.00	11.00	5	0.53	
14161	80	D	15.00	7.75	4.50	8.69	11.25	10	1.31	5 mtg holes 0.56
14166	77	M	15.00	8.00	5.75	6.44	8.75	6	0.78	
14167	78	R	15.00	8.00	5.56	6.52	8.75	6	0.81	
14169	82	M	15.00	8.00	5.75	6.44	8.75	10	0.78	
14170	53	I	15.00	6.00	4.94	11.00	12.50	5&6	0.53	
14180	75	P	15.00	7.38	5.25	6.25	8.75	6	0.81	
14186	46	P	15.00	4.69	3.50	6.44	8.00	5	0.66	
14190	56	E	15.00	6.25	5.56	11.00	12.50	5&6	0.53	5 holes 0.53 & 6 holes 0.66
14201	83	E	15.00	8.50	7.36	10.50	12.75	5&6	0.78	
14210	80	Q	15.00	8.13	6.63	11.00	12.50	5	0.66	Spotface 5 holes 1.87
14214	66	Q	15.00	8.53	4.49	9.00	11.25	10	1.25	
1422	70	I	15.00	6.50	5.38	9.50	11.25	10	0.81	
14223	82	F	15.00	8.56	4.59	8.75	11.25	10	0.81	
1423	70	I	15.00	6.50	5.38	9.50	11.25	6	0.66	
14234	60	D	15.00	4.56	3.42	6.13	11.25	10	0.88	
14236	95	E	15.00	7.00	6.37	11.18	13.19	10	1.06	2 mtg holes 0.52 & (2)M14x2 tapped
14239	75	D	15.00	8.38	5.50	8.69	11.25	10	1.31	5 mtg holes 0.56
14242	52	D	15.00	4.86	3.99	9.00	10.50	5	0.53	Uses clipped head drum bolts
14243	45	I	15.00	4.42	3.81	9.00	10.50	5	0.66	
14244	62	I	15.00	5.42	4.50	9.19	11.25	5	0.66	
14245	61	I	15.00	5.55	4.50	9.19	11.25	5&6	0.78	
14246	60	D	15.00	5.54	4.44	9.18	11.25	6	0.65	
14249	67	F	15.00	8.06	3.75	7.13	8.75	6	0.81	
14252	72	T	15.00	3.81	3.50	9.44	11.00	5&6	0.53	Step hub pilot 12.001
14254X	95	Q	15.00	9.22	5.50	8.78	11.25	10	1.31	
14256	110	H	15.00	9.81	6.50	8.53	11.25	10	1.31	
14259	75	I	15.00	7.91	6.61	9.44	11.25	10	0.81	
14260	63	F	15.00	7.00	5.38	9.38	11.25	10	0.81	
1427	75	I	15.00	7.00	5.63	11.00	12.50	6	0.66	Spot face 6 holes 1.38
14271	66	D	15.00	6.41	4.59	6.25	8.75	6	0.81	
14273	95	F	15.00	8.76	5.45	8.53	11.25	10	1.28	
14274	90	F	15.00	8.75	5.45	8.53	11.25	10	1.28	
14278	63	E	15.00	5.38	4.78	6.44	8.00	5	0.66	
14279	61	B	15.00	5.38	4.87	6.44	8.00	5	0.66	6 holes 0.31-18 tapped
14280	77	E	15.00	8.38	7.75	11.25	12.75	5&6	0.78	
14285	53	F	15.00	6.91	3.47	6.44	8.75	6	0.78	
14286	53	F	15.00	6.91	3.47	6.44	8.75	10	0.72	
1429	75	L	15.00	7.19	6.00	9.75	11.25	6	0.78	Spot face 6 holes 1.38
14291	82	L	15.00	8.56	4.53	9.50	11.25	10	0.81	
14294	65	D	15.00	5.88	4.94	10.00	12.75	5&6	0.78	
14299	95	H	15.00	10.12	7.63	9.44	11.25	10	1.31	5 mtg holes 0.66
1430	85	L	15.00	7.19	6.00	9.75	11.25	10	0.81	
14302	75	D	15.00	7.88	4.56	8.78	11.25	10	1.31	
14310	85	Q	15.00	8.97	6.50	8.53	11.25	10	1.03	
14313	95	Q	15.00	8.38	7.38	10.50	12.75	5	0.78	Use K exciter hole pattern
14317	81	D	15.00	8.81	7.62	11.25	12.75	5&6	0.65	
1432	75	I	15.00	7.50	6.50	9.50	11.25	10	0.81	

Part No.	Weight	Drum Type	Brake Face Dia.	Overall Depth	Brake Face Width	Hub Pilot	Bolt Circle	Bolt Holes No.	Bolt Holes Dia.	Special Information
14325	90	H	15.00	9.53	7.50	9.50	11.25	5	0.78	Oil groove
14326	79	D	15.00	7.78	6.44	7.13	8.75	6	0.81	
1433	80	B	15.00	7.50	6.75	9.50	11.25	6	0.66	
14331	95	F	15.00	8.79	6.98	8.99	10.83	10	0.81	
14345	82	C	15.00	7.60	4.85	7.13	8.75	10	0.81	
14350	66	C	15.00	7.75	4.63	6.44	8.75	6	0.81	
14351	85	E	15.00	8.75	8.22	10.66	13.19	10	1.28	
1436	85	E	15.00	8.06	7.50	11.25	12.75	5	0.78	
1437	85	I	15.00	8.19	7.00	9.75	11.25	10	0.81	
14372	103	Q	15.00	9.22	5.74	8.78	11.25	10	1.28	
1438	99	I	15.00	8.19	7.00	9.75	11.25	6	0.78	
14390	76	E	15.00	8.13	7.69	9.44	11.25	10	0.81	
14391	83	E	15.00	7.48	6.38	11.25	12.75	6	0.66	
14394	38	E	15.00	3.94	3.38	10.00	11.25	5	0.53	
14395	76	E	15.00	8.16	7.44	9.50	11.25	10	0.81	
14400	66	C	15.00	7.75	4.63	6.44	8.75	6	0.81	
14402	64	F	15.00	6.69	4.00	7.13	8.75	5	0.81	
14408	90	H	15.00	9.08	6.40	7.00	8.75	6	0.81	
14409	90	H	15.00	9.08	6.40	7.00	8.75	10	0.78	
1441	80	F	15.00	7.75	4.63	6.44	8.75	6	1.25	3 mtg holes 0.56
14411	100	F	15.00	8.02	4.32	9.00	11.25	10	1.28	
14412	83	H	15.00	9.75	7.52	8.78	11.25	10	0.94	
14415	61	F	15.00	7.31	5.50	7.50	8.75	6	0.81	
14417	65	P	15.00	5.38	4.38	9.25	11.25	5	0.78	
14418	93	H	15.00	9.75	7.52	9.00	10.83	8	0.94	
14419	118	U	15.00	8.63	6.62	9.44	11.25	10	1.31	5 mtg holes 0.56
14420	80	C	15.00	7.75	4.75	6.44	8.75	10	0.81	3 mtg holes 0.41
14422	96	F	15.00	9.50	6.44	7.00	8.75	10	0.75	
14423	93	H	15.00	9.94	6.34	7.00	8.75	10	0.78	
14428	65	D	15.00	6.22	5.44	11.00	12.50	5	0.53	
14429	65	I	15.00	6.21	5.50	11.00	12.50	5	0.62	
14430	65	I	15.00	6.50	5.50	9.44	11.00	5	0.66	
14432	78	H	15.00	8.00	5.56	6.51	8.75	10	0.78	
14435	76	I	15.50	7.76	5.38	11.18	13.19	10	1.06	
14441	75	Q	15.00	7.22	4.25	9.00	11.25	10	1.28	
14445X	110	A	15.00	8.38	7.25	8.66	11.25	10	1.03	
14446	54	Q	15.00	5.00	3.50	6.25	8.00	5	0.53	
1445	80	F	15.00	7.81	5.44	6.25	8.00	5	0.81	
14453X	88	H	15.00	9.31	5.40	8.78	11.25	10	0.94	
14454X	87	H	15.00	9.31	5.40	8.78	11.25	10	1.28	
14455	71	F	15.00	8.22	3.75	9.50	11.25	10	0.81	
14456	78	D	15.00	8.69	6.75	9.38	11.25	10	0.81	
14457	76	M	15.00	7.69	4.31	8.36	11.25	10	1.31	Oil Groove & Notched for Sensor
1446	80	F	15.00	7.81	5.44	6.25	10.00	8	0.81	
14463	100	E	15.00	7.44	6.38	11.25	12.75	6	0.78	
14473	48	E	15.00	4.10	3.56	9.00	10.50	5	0.53	
14474	95	F	15.00	9.94	6.50	7.00	8.75	10	0.78	
14482	75	F	15.00	7.84	4.44	9.50	11.25	10	0.81	
14484	72	Q	15.00	7.07	5.35	6.25	8.75	6	0.81	
14488	80	Q	15.00	7.00	4.50	6.25	8.75	6	0.81	
14489	80	Q	15.00	7.00	4.50	6.25	8.00	5	0.81	
14500	77	E	15.00	8.00	7.31	9.50	11.25	10	0.81	
14503	97	U	14.50	7.88	4.75	9.44	11.25	10	1.31	5 mtg holes 0.56 & outboard pilot
14504	136	U	14.50	11.19	8.88	9.44	11.25	10	1.31	5 mtg holes 0.56 & outboard pilot
14508	145	U	14.50	11.50	9.25	9.44	11.25	10	1.31	5 mtg holes 0.56 & outboard pilot
14509	175	U	14.50	13.19	10.88	9.44	11.25	10	1.31	5 mtg holes 0.56 & outboard pilot
1451	85	D	15.00	8.50	6.56	9.00	11.25	10	0.81	
14512	95	U	14.50	8.00	5.38	9.44	11.25	10	1.31	5 mtg holes 0.56 & outboard pilot
14513	184	U	14.50	12.88	10.50	9.44	11.25	10	1.31	5 mtg holes 0.56 & outboard pilot
14515	98	U	14.50	8.31	6.06	9.44	11.25	10	1.31	5 mtg holes 0.56 & outboard pilot
14517	190	U	14.50	13.69	11.38	9.44	11.25	10	1.31	5 mtg holes 0.56 & outboard pilot 13
14518	111	U	14.50	8.69	6.44	9.44	11.25	10	1.31	5 mtg holes 0.56 & outboard pilot
14519	119	U	14.50	8.31	6.06	9.44	11.25	10	1.31	5 mtg holes 0.56 & outboard pilot
1452	85	F	15.00	8.44	5.50	6.25	8.75	6	0.66	3 mtg holes 0.41
14523	186	T	14.50	12.88	10.50	9.44	11.25	10	1.31	5 mtg holes 0.56 & circular ribs

Part No.	Weight	Drum Type	Brake Face Dia.	Overall Depth	Brake Face Width	Hub Pilot	Bolt Circle	Bolt Holes No.	Bolt Holes Dia.	Special Information
14525	97	T	14.50	8.31	6.06	9.44	11.25	10	1.31	5 mtg holes 0.56 & circular ribs
14529	82	F	15.00	8.86	4.53	8.75	11.25	10	1.31	
14530	85	D	15.00	8.50	6.56	9.75	11.25	5	0.66	
14533	160	H	14.50	12.81	10.50	9.44	11.25	10	1.31	5 mtg holes 0.56 & outboard pilot
1454	85	D	15.00	8.56	7.00	9.44	11.00	6	0.66	
14542	87	F	15.00	8.75	4.50	9.00	11.25	10	0.81	
14545	100	Q	15.00	9.04	5.56	8.78	11.25	10	0.94	
14549	95	Q	15.00	9.04	5.54	9.00	11.25	10	1.28	
14550	85	E	15.00	8.38	7.84	11.00	12.50	5&6	0.66	
14559	105	U	14.50	8.31	6.06	9.44	11.25	10	1.31	5 mtg holes 0.56 & outboard pilot
14560	82	Q	15.00	8.94	6.44	9.44	11.25	10	0.81	
14563	49	E	15.00	4.50	4.09	9.75	10.88	5	0.59	
14564	64	I	15.00	5.18	4.56	9.75	10.87	6	0.59	
14566	69	E	15.00	7.16	6.44	9.44	11.00	5&6	0.66	
14569X	97	Q	15.00	9.22	5.50	9.00	11.25	10	1.31	
1457	90	I	15.00	9.00	7.81	9.75	11.25	6	0.81	
14571	75	D	15.00	5.88	4.50	9.25	11.25	5&6	0.78	
14572	75	D	15.00	5.88	4.50	9.25	11.25	6	0.78	
14573	136	U	14.50	11.79	8.50	9.44	11.25	10	1.31	5 mtg holes 0.56 & outboard pilot
14574M	79	F	15.00	8.87	5.38	8.78	11.25	10	0.94	
14575M	78	F	15.00	8.87	5.38	8.78	11.25	10	1.31	
14576	107	H	15.00	10.59	7.75	9.00	10.83	8	0.97	
14577	79	Q	15.00	8.65	4.40	8.78	11.25	10	1.31	
14578	79	Q	15.00	8.79	4.78	9.00	10.83	8	1.00	
14579	84	F	15.00	8.44	4.49	6.29	8.00	5	0.81	
14580	90	I	15.00	9.00	7.81	9.75	11.25	10	0.81	
14581	85	H	15.00	8.81	6.37	6.75	8.75	6	0.81	
14590	90	D	15.00	9.50	7.56	9.75	11.25	5	0.66	
14600	95	B	15.00	7.06	6.37	9.75	11.25	5	0.66	
14601	75	E	15.00	6.75	5.88	10.25	12.00	10	0.67	
14603	76	I	15.00	6.68	5.40	10.00	12.75	6	0.78	
14606	89	F	15.00	8.62	7.44	11.00	12.50	5&6	0.66	
14610	100	H	15.00	9.88	7.56	9.44	11.25	10	1.25	5 mtg holes 0.56 & outboard pilot
14615	74	E	15.00	6.31	5.31	9.25	11.25	5&6	0.78	
14635	77	F	15.00	8.09	3.50	6.75	8.75	6	0.81	3 mtg holes 0.53
1464	85	Q	15.00	8.75	6.25	8.66	11.25	10	0.81	
14646	115	H	15.00	9.81	8.00	9.44	11.25	10	1.03	
14647	75	D	15.00	7.88	4.56	8.66	11.25	10	1.31	
1465	100	H	15.00	10.50	8.31	9.44	11.25	10	1.25	5 mtg holes 0.56 & outboard pilot
1466	70	I	15.00	6.78	5.56	11.25	12.75	5	0.66	Spot face 5 holes 1.38
14667	89	I	15.00	8.56	7.56	9.44	11.25	5	0.78	
14668	80	F	15.00	7.56	4.13	9.50	11.25	10	0.81	
1467	62	H	15.00	7.19	4.88	6.28	8.75	6	0.81	3 mtg holes 0.34
14673	93	E	15.00	8.50	7.37	9.44	11.00	5	0.78	
14674	75	D	15.00	7.84	4.44	8.78	11.25	10	1.28	
14675	90	D	15.00	8.91	5.38	8.78	11.25	10	1.28	
14680	95	H	15.00	9.47	7.31	9.00	11.25	10	0.81	3 mtg holes 0.56
14682	132	H	15.00	9.81	6.50	9.00	11.25	10	1.31	Outboard pilot 13.125
14683	100	H	15.00	8.02	4.70	9.00	11.25	10	1.31	Outboard pilot 13.125
14689	90	I	15.00	7.50	6.25	9.38	11.25	10	0.81	
1469	80	E	15.00	8.38	7.84	11.00	12.50	5	0.78	
14700	78	E	15.00	8.16	7.44	9.50	11.25	5&6	0.78	
14702	76	H	15.00	8.19	5.50	7.00	8.75	10	0.71	
14710	80	E	15.00	8.13	7.50	9.50	11.25	10	0.81	
14717	80	P	15.00	7.25	5.38	6.25	8.75	6	0.81	
14718	80	P	15.00	7.25	5.38	7.13	8.75	6	0.81	
14720	85	E	15.00	8.38	7.84	9.44	11.25	10	0.81	
14729	110	F	15.00	8.56	4.88	7.13	8.75	6	0.81	
1473	85	E	15.00	8.63	8.13	9.00	11.25	10	0.81	
14731	95	Q	15.00	8.74	5.25	8.78	11.25	10	1.00	
14735	70	F	15.00	8.02	5.47	6.25	8.75	6	0.81	
14736	76	F	15.00	8.54	6.50	6.25	8.75	6	0.84	
14740	79	E	15.00	8.63	8.13	9.44	11.25	10	0.81	
14750	63	F	15.00	7.00	5.38	9.38	11.25	10	0.81	
14751	63	F	15.00	7.00	5.38	9.38	11.25	10	1.19	

Part No.	Weight	Drum Type	Brake Face Dia.	Overall Depth	Brake Face Width	Hub Pilot	Bolt Circle	Bolt Holes No.	Bolt Holes Dia.	Special Information
14756	82	F	15.00	8.06	4.03	8.69	11.25	10	1.31	
1476	65	F	15.00	6.06	3.50	6.25	8.75	6	0.81	
14762	75	F	15.00	7.81	5.44	6.25	8.75	6	0.81	
14763	75	F	15.00	7.19	4.00	6.44	8.75	6	1.25	3 mtg holes 0.56
1478	70	F	15.00	6.50	4.75	9.38	11.25	10	0.81	
1479	70	P	15.00	6.63	4.44	6.75	8.00	5	0.88	
14792M	90	Q	15.00	9.18	4.66	8.66	11.25	10	1.28	
1480	85	Q	15.00	8.69	6.31	11.00	12.50	5&6	0.66	Spot face 5 & 6 holes 1.38
14806	105	F	15.00	10.94	7.50	6.44	8.75	6	0.81	
14810	89	D	15.00	9.47	7.31	9.44	11.25	10	0.81	
1482	88	H	15.00	9.44	6.50	9.44	11.25	10	1.25	5 mtg holes 0.56 & outboard pilot
14828	75	I	15.00	7.94	6.69	11.25	12.75	5	0.66	Step hub pilot 14.25
1483	85	E	15.00	8.13	7.50	9.44	11.00	5	0.78	
14831	81	H	15.00	8.79	6.56	9.00	10.83	8	0.97	
14833	90	E	15.00	8.24	5.50	8.66	11.25	10	1.28	
14840	76	E	15.00	8.13	7.50	9.44	11.00	5&6	0.78	
14848	52	Q	15.00	6.06	3.93	10.00	11.00	5	0.56	
14850	75	E	15.00	7.19	6.50	11.25	12.75	5&6	0.66	
14853	117	H	15.00	10.70	7.48	11.23	13.19	10	0.91	3 mtg holes M12x1.75 tapped
14859	75	P	15.00	6.75	5.52	6.25	8.75	6	0.84	
14860	83	I	15.00	8.72	7.63	11.00	12.50	5	0.66	Spot face 5 holes 1.38
14863	80	E	15.00	4.19	3.38	7.44	8.75	6	0.94	
1487	80	E	15.00	8.00	7.44	11.00	12.75	6	0.66	
14871	67	H	15.00	8.83	4.52	8.78	11.25	10	1.25	
14877	86	E	15.00	8.50	7.47	11.00	12.50	5&6	0.66	
1488	85	E	15.00	8.13	7.63	9.44	11.25	10	1.03	
14899	88	D	15.00	8.38	7.19	11.00	12.50	5&6	0.66	
1490	100	H	15.00	10.06	7.81	9.00	11.25	10	0.81	3 mtg holes 0.56 & outboard pilot
1491	70	R	15.00	6.25	5.25	5.13	8.00	5	0.81	
14913	73	B	15.00	6.18	5.49	9.25	11.25	5&6	0.78	
14930	94	H	15.00	10.50	8.00	9.00	11.25	10	0.81	3 mtg holes 0.56 & outboard pilot
14943X	90	Q	15.00	9.04	4.53	9.00	10.83	8	0.97	
14945X	92	Q	15.00	9.04	4.53	8.78	11.25	10	0.94	
14947	87	Q	15.00	8.81	4.35	8.78	11.25	10	1.31	
1496	75	H	15.00	7.63	5.50	6.75	8.00	5	0.81	
14970	51	A	15.00	5.31	4.13	10.00	11.25	5	0.53	
14973	105	F	15.00	10.38	7.53	8.53	11.25	10	0.81	Outboard pilot 13.25
14974	108	F	15.00	10.09	7.25	8.53	11.25	10	0.81	Outboard pilot 13.25
14975	108	F	15.00	10.25	7.50	8.53	11.25	10	0.81	Outboard pilot 13.25
14976	95	C	15.00	10.28	7.14	8.78	11.25	10	1.00	
14977	105	F	15.00	10.59	7.75	8.78	11.25	10	0.94	Outboard pilot 13.25
14978	95	C	15.00	10.28	7.14	9.00	10.83	8	1.00	
14980	105	H	15.00	11.28	9.06	8.97	10.83	8	0.85	
14981	100	H	15.00	9.98	7.36	8.78	11.25	10	0.94	
14988	103	H	15.00	11.59	9.21	8.78	11.25	10	0.94	
14989	105	H	15.00	11.59	9.21	9.00	10.83	8	0.97	
14990	55	E	15.00	6.03	5.50	9.44	11.00	5&6	0.66	
14991	118	H	15.00	11.75	9.22	8.78	11.25	10	0.94	
14992	118	H	15.00	11.75	9.22	8.78	11.25	10	1.03	
14998	118	H	15.00	11.75	9.22	9.00	10.83	8	1.00	
1500	65	B	16.00	6.13	5.44	9.50	11.25	6	0.66	
1501	65	B	16.00	6.13	5.44	10.00	11.50	6	0.66	
1503	70	B	16.00	6.50	5.88	10.00	11.50	6	0.66	
15040	80	B	16.00	7.50	6.50	9.50	11.25	10	0.81	
15050	80	B	16.00	7.50	6.50	9.50	11.25	6	0.66	
15055	80	S	16.10	8.94	5.13	9.06	10.83	8	0.80	
1506	80	B	16.00	7.50	6.50	10.00	11.50	6	0.66	
1507	90	B	16.00	8.25	7.50	9.50	11.25	10	0.81	
15074	78	S	16.10	7.75	5.10	9.06	10.83	8	0.82	2 mtg holes M12x1.5 tapped
15076	65	R	16.25	6.84	3.84	6.28	8.75	6	1.03	3 mtg holes 0.53
15080	108	D	16.00	8.40	6.56	10.50	12.75	5	0.78	
15090	95	Q	16.00	9.75	6.53	11.00	12.50	6	0.66	Spot face 6 holes 1.38
15102	100	H	16.00	8.85	5.56	9.00	11.25	10	0.84	
15111	126	H	16.14	9.22	6.75	9.47	11.25	10	1.26	3 holes M12x1.75 tapped O.B.13
15112	126	H	16.14	9.22	6.75	9.47	11.25	10	1.26	3 holes M12x1.75 tapped O.B.13

Part No.	Weight	Drum Type	Brake Face Dia.	Overall Depth	Brake Face Width	Hub Pilot	Bolt Circle	Bolt Holes No.	Bolt Holes Dia.	Special Information
15113	141	H	16.14	11.87	9.31	11.74	13.19	15	0.94	3 holes M12x1.5 tapped O.B. 14.46
15114	145	H	16.14	10.63	7.64	11.62	13.19	5&10	0.72	5 holes 0.72 & 10 holes 0.91 O.
15115	95	H	16.14	8.38	6.63	11.74	13.19	10	0.89	Outboard pilot 14.53
15116	150	H	16.14	11.26	9.20	9.42	11.25	10	1.28	Outboard pilot 12.917
15117	110	H	16.14	10.12	7.94	11.07	13.19	10	1.03	2 holes M12x1.75 tapped O.B.15.16
15121	60	K	16.25	6.06	4.06	9.00	11.25	10	1.25	
15124	100	H	16.14	10.63	7.64	11.62	13.19	5&10	0.72	5 holes 0.72 & 10 holes 0.91 O.
15126	146	I	16.14	10.83	8.85	11.10	13.19	10	0.91	
15127	70	K	16.00	6.63	5.50	9.44	11.25	10	0.94	
15136	80	K	16.00	8.00	6.63	6.25	8.00	5	0.81	
15143	170	A	16.14	10.83	8.99	11.06	13.19	10	1.03	(4) holes M12x1.75 & (1) c'bored hole
15152	80	C	16.00	8.53	5.94	7.50	8.75	6	0.81	
15164	95	Q	16.00	9.75	6.50	9.38	11.25	10	0.81	
15165	90	Q	16.00	9.13	6.50	9.38	11.25	10	0.81	
15169	38	B	16.00	3.28	2.84	9.88	11.00	6	0.52	Step hub pilot 12
15177	89	J	16.00	8.38	6.50	11.50	12.75	5	0.65	Peripheral mount 14.25
15179	85	B	16.00	7.16	4.31	8.69	11.25	10	1.28	5 mtg holes 0.52
1520	80	N	16.00	7.50	5.63	6.25	8.75	6	0.81	
15210	65	K	16.25	5.53	3.72	7.50	9.00	5	0.53	
15219	65	K	16.25	5.44	3.75	7.00	8.00	5	0.53	
1522	80	A	16.00	7.50	5.63	6.25	11.25	10	0.81	
1523	70	A	16.00	7.25	5.50	9.44	11.25	10	0.81	
15231	98	C	15.75	8.50	5.63	8.66	11.25	8	0.88	
1525	85	K	16.00	8.00	6.63	6.25	8.75	6	0.81	
15251	75	J	16.00	6.91	5.91	10.63	12.00	5	0.66	Peripheral mount 13.25
15254	55	D	16.25	5.25	3.63	9.50	11.25	12	0.52	
15255	57	D	16.25	4.95	4.06	10.00	11.00	5	0.53	
15258	80	J	16.00	7.48	6.44	10.63	12.00	5	0.65	Peripheral mount 13.25
15287	95	E	15.50	10.00	9.50	11.06	13.19	10	1.03	
15288	100	E	15.50	10.69	8.38	11.06	13.19	10	1.03	
1529	85	A	16.00	8.00	6.63	6.25	11.25	10	0.81	
15304	98	F	15.75	7.50	4.63	8.65	11.25	8	0.88	
1533	105	M	16.00	9.75	7.50	9.44	11.25	10	0.81	
1534	60	C	16.00	8.66	3.00	7.13	8.75	6	0.81	
1535	100	M	16.00	10.75	8.50	9.44	11.25	10	0.81	
1536	100	M	16.00	10.44	8.00	9.44	11.25	10	0.81	
1540	100	M	16.00	10.25	6.50	9.38	11.25	10	0.81	
15406	40	E	16.00	3.63	2.78	5.13	6.50	6	0.53	
15423	85	D	16.00	6.69	5.56	9.44	11.00	5&6	0.78	5 holes 0.78 & 6 holes 0.66
15424	60	C	16.00	8.72	2.50	7.13	8.75	6	0.81	
15441	68	F	16.00	7.06	4.38	6.28	8.75	6	1.03	3 mtg holes 0.53
15464	65	K	16.00	5.53	3.72	7.50	9.00	5	0.53	
15494	115	Q	16.14	10.66	6.88	11.74	13.19	5&10	0.96	5 holes 0.96 & 10 holes 0.91 & (3)
15495	118	Q	16.14	11.00	7.56	11.74	13.19	5&10	0.96	5 holes 0.96 & 10 holes 0.91 & (3)
1551	105	D	16.14	9.88	7.55	8.58	11.25	8	0.90	
15522	80	F	16.00	8.81	5.44	8.00	10.00	4&8	0.53	4 holes 0.53 & 8 holes 0.78
15523	50	E	16.00	4.88	4.35	9.50	11.25	10	0.78	
15561	125	H	16.00	8.88	5.75	8.75	11.25	10	0.81	5 mtg holes 0.56 & Outboard Pilot
15569	105	C	16.25	10.00	7.50	11.63	13.19	10	0.92	
15573	135	H	16.25	12.63	10.50	11.62	13.19	10	0.92	
1559	85	D	16.00	8.75	6.50	9.88	11.25	10	0.81	
15617	83	H	16.00	9.38	5.44	7.00	8.75	10	0.73	
1563	95	M	16.00	9.75	7.50	9.88	11.25	10	0.81	
1564	90	M	16.00	9.13	6.13	9.75	11.25	10	0.81	
15665	101	A	16.00	10.01	6.51	9.00	11.25	10	1.31	3 mounting holes 0.56" countersunk
15725	65	K	16.25	5.75	3.50	6.25	8.00	5	0.52	
15735	60	C	16.00	8.66	3.00	7.13	8.75	6	0.81	
1575	80	D	15.75	8.80	6.60	8.53	11.25	10	0.81	
15753	88	Q	15.75	8.56	6.04	8.53	11.25	10	0.81	
15758	88	Q	15.75	8.56	6.04	8.78	11.25	10	0.81	
15783	92	N	15.75	8.35	6.69	8.46	11.22	8	0.91	
15789	121	E	15.50	10.13	8.38	11.06	13.19	10	1.03	
15790	121	E	15.50	10.69	8.38	11.06	13.19	10	1.03	
15802	119	H	15.50	8.31	6.44	8.69	11.25	10	0.91	3 mtg holes 0.53 & 13x1/2 tapped
15806	100	D	16.00	10.00	8.75	8.08	11.25	8	0.89	

Part No.	Weight	Drum Type	Brake Face Dia.	Overall Depth	Brake Face Width	Hub Pilot	Bolt Circle	Bolt Holes No.	Bolt Holes Dia.	Special Information
15807	70	D	16.00	7.28	5.69	9.06	11.25	8	0.89	
15817	100	H	16.00	9.50	8.25	8.07	11.25	10	0.89	
15818	114	H	16.00	10.00	8.75	8.07	11.25	8	0.89	
15819	94	H	16.00	9.63	7.25	8.65	11.25	10	0.89	
15830	85	F	16.00	8.25	6.00	9.38	11.25	10	0.81	
15847	113	D	16.00	8.38	6.56	11.00	12.50	5	0.66	
15848	91	D	16.00	8.38	6.56	11.25	12.75	5	0.66	
15855	50	B	16.00	4.64	3.18	10.00	11.00	5	0.53	
15876	65	K	16.25	6.78	3.68	6.25	8.75	6	0.84	
15907	110	D	16.00	10.78	8.88	8.08	11.25	8	0.89	
15908X	120	T	15.50	8.31	6.50	11.06	13.19	10	1.03	Outboard Pilot 15.23
15974	75	F	16.00	9.78	5.94	6.44	8.75	3&6	0.69	3 holes 0.69 & 6 holes 1.25
15975	75	F	16.00	10.28	6.44	6.44	8.75	3&6	0.69	3 holes 0.69 & 6 holes 1.25
15989	110	F	16.25	8.81	4.44	9.00	11.25	10	1.28	3 mtg holes 0.53
1600	90	H	16.50	9.00	7.70	6.28	8.75	6	1.03	Outboard Pilot 11.25
16010	95	Q	16.50	9.00	6.41	9.44	11.25	10	0.81	
16020	120	H	16.50	13.13	10.38	9.44	11.25	10	1.31	5 mtg holes 0.56 & O.B. pilot 12.75
16026	105	D	16.50	7.81	5.38	9.00	11.25	10	1.31	
16027	100	H	16.50	8.97	6.44	8.53	11.25	10	1.31	5 mtg holes 0.56
16031	114	D	16.50	8.40	7.40	10.50	12.75	5	0.78	
16032	105	D	16.50	8.23	7.23	11.25	12.75	5&6	0.78	
16033	115	H	16.50	8.25	4.60	9.44	11.25	10	1.31	5 mtg holes 0.56 & O.B. pilot 13.22
16035	128	Q	16.50	9.22	5.50	8.53	11.25	10	1.31	
16036	90	E	16.50	8.75	7.50	9.44	13.19	10	1.03	Spot face 10 holes 1.87
16040	65	H	16.50	7.63	5.50	9.44	11.25	10	1.31	5 mtg holes 0.56 & O.B. pilot 13.5
16041	67	H	16.50	7.62	5.50	9.00	11.25	10	1.25	5 mtg holes 0.56 & O.B. pilot 13.5
16045	132	H	16.50	11.44	8.50	8.78	11.25	10	0.81	
16048X	177	H	16.50	11.56	9.44	11.11	13.19	10	1.06	
16049	145	H	16.50	11.25	9.13	9.00	11.25	10	1.31	9.805 G.S.
16050	65	E	16.50	6.03	5.06	11.00	12.50	5	0.66	
16051	181	H	16.50	11.56	9.44	11.25	13.19	10	1.06	
16052	71	E	16.50	7.00	6.56	13.88	14.88	10	0.47	
16053	157	H	16.50	11.28	9.16	11.25	13.19	10	1.06	
16053X	157	H	16.50	11.28	9.16	11.25	13.19	10	1.06	
16054	95	I	16.50	8.75	7.50	11.00	12.50	12	0.66	Step hub pilot 11.25
16056	158	D	16.50	10.20	7.62	11.42	13.19	10	1.04	
16057	100	H	16.50	9.78	6.87	9.00	11.25	10	1.31	
16060X	135	H	16.50	9.88	6.50	9.00	11.25	10	1.31	Notched for sensor & O.B. pilot 13.25
16062X	118	H	16.50	9.75	6.50	8.53	11.25	10	1.31	Outboard Pilot 13.25
16064	122	H	16.50	9.88	6.62	8.78	11.25	10	0.94	Notched for sensor
16065	127	H	16.50	9.19	5.44	9.00	11.25	10	1.31	5 mtg holes 0.56
16066X	124	H	16.50	9.88	6.62	8.78	11.25	10	0.94	
16070	155	H	16.50	13.44	10.50	8.53	11.25	10	0.81	Notched for sensor & O.B. pilot 13
16071	155	H	16.50	13.19	10.50	8.78	11.25	10	0.94	
16073	144	H	16.50	11.25	9.13	8.53	11.25	10	0.81	
16074X	176	H	16.50	13.38	10.54	8.78	11.25	10	0.94	
16075	125	H	16.50	9.15	5.87	9.00	11.25	10	1.31	
16077	155	H	16.50	13.44	10.50	9.00	11.25	10	1.31	Notched for sensor
16108	95	M	16.50	10.69	7.88	11.38	13.19	10	0.81	
16110	85	R	16.50	8.00	5.75	6.25	8.00	5	0.81	
16111	100	D	16.50	8.75	6.88	9.75	11.25	5	0.66	Notched for sensor
16112	100	D	16.50	8.75	6.87	9.75	11.25	10	0.81	Notched for sensor
16113	104	Q	16.50	8.78	6.72	9.75	11.25	10	0.81	Notched for sensor
16115	97	D	16.50	6.69	5.41	10.00	12.75	5&6	0.78	
16120	85	R	16.50	8.00	5.75	6.25	8.75	6	0.81	
16121	96	I	16.50	8.13	5.50	9.44	11.25	10	0.81	
16125X	165	H	16.50	12.35	9.86	8.78	11.25	10	0.94	
16126	110	H	16.50	10.25	7.50	11.06	13.18	10	1.03	
16128	70	E	16.50	5.65	4.75	11.25	12.75	5	0.65	
16129	85	I	16.50	8.63	7.50	11.00	12.50	5	0.66	
1613	85	Q	16.50	8.00	5.75	6.25	11.25	10	0.81	
16131	95	I	16.50	8.63	7.38	8.66	11.25	10	0.81	
16132	85	I	16.50	8.13	6.75	11.00	12.50	5&6	0.78	
16134	90	Q	16.50	8.25	5.63	9.44	11.25	10	0.81	
16135	80	G	16.50	7.75	6.81	11.25	12.75	5	0.66	Step hub pilot 14.25

Part No.	Weight	Drum Type	Brake Face Dia.	Overall Depth	Brake Face Width	Hub Pilot	Bolt Circle	Bolt Holes No.	Bolt Holes Dia.	Special Information
16136	85	H	16.50	8.19	5.06	8.75	11.25	10	1.03	5 mtg holes 0.56
16137	90	H	16.50	8.31	5.56	9.44	11.25	10	1.25	5 mtg holes 0.56
16138X	119	Q	16.50	9.52	6.27	8.78	11.25	10	0.94	
16139	94	G	16.50	8.25	7.38	11.25	12.75	5&6	0.66	Step hub pilot 14.25
1614	85	Q	16.50	8.00	5.75	7.13	11.25	10	0.81	
16141	100	H	16.50	10.63	7.63	9.00	10.83	8	0.94	
16142	101	H	16.50	9.06	6.38	8.75	11.25	10	0.81	5 mtg holes 0.56
16143	110	H	16.50	12.25	9.41	8.53	11.25	10	0.81	3 mtg holes 0.56 & O.B. pilot 13.25
16144	110	H	16.50	12.25	9.41	9.44	11.25	10	0.81	3 mtg holes 0.56 & O.B. pilot 13.25
16145	105	H	16.50	10.30	7.30	8.78	11.25	10	0.94	
16146	115	H	16.50	10.81	8.25	8.78	11.25	10	0.81	Outboard Pilot 13.19
16147	136	H	16.50	12.39	9.63	9.00	10.83	8	0.97	
16148	132	H	16.50	12.39	9.63	9.00	11.22	8	0.84	
16150	65	E	16.50	6.09	5.44	9.44	11.00	6	0.66	
16151	65	E	16.50	6.12	5.41	9.25	11.25	5&6	0.78	
16152	90	I	16.50	6.12	5.38	9.25	11.25	10	0.65	
16153	90	I	16.50	6.12	5.38	9.25	11.25	10	1.14	
16154	73	I	16.50	6.18	5.50	9.44	11.00	5	0.65	
16155	92	E	16.50	9.19	6.56	9.00	11.25	10	1.25	
1616	85	H	16.50	8.06	5.50	8.66	11.25	10	1.25	5 mtg holes 0.56
16161X	115	Q	16.50	9.38	6.38	8.78	11.25	10	1.28	
16164	80	H	16.50	7.75	5.00	8.69	11.25	10	1.03	5 mtg holes 0.56
16165	118	H	16.50	9.38	6.44	8.75	11.25	10	1.28	
16166	90	H	16.50	9.50	6.56	9.44	11.25	10	1.25	5 mtg holes 0.56 & O.B. pilot 12.75
16167	96	F	16.50	9.34	5.40	8.78	11.25	10	1.00	
16168	96	F	16.50	9.34	5.40	9.00	10.83	8	1.00	
16170	90	Q	16.50	9.06	6.75	6.25	11.25	10	0.81	
16171	92	H	16.50	9.04	6.10	8.78	11.25	10	1.25	
16172	90	H	16.50	9.06	5.56	9.44	11.25	10	1.25	5 mtg holes 0.56
16173	106	Q	16.50	8.78	7.41	11.25	12.75	5&6	0.78	5 holes 0.78 & 6 holes 0.66
16175	90	H	16.50	9.00	6.44	9.44	11.25	10	1.25	5 mtg holes 0.56
16176	118	H	16.50	10.13	6.87	8.78	11.25	10	0.94	Notched for sensor
16177	106	H	16.50	9.63	5.93	8.78	11.25	10	0.94	Notched for sensor
16180	90	Q	16.50	9.06	6.75	7.13	11.25	10	0.81	
16182X	119	Q	16.50	9.52	6.27	8.78	11.25	10	1.28	
16183X	117	Q	16.50	9.52	6.27	8.78	11.25	10	0.94	
16189	90	Q	16.50	9.19	6.44	9.44	11.25	10	0.81	
16196	90	D	16.50	9.50	6.75	11.00	12.50	5&6	0.66	Spot face 5 & 6 holes 1.38
1620	65	B	16.50	6.19	5.69	11.00	12.75	6	0.66	
16209	90	B	16.50	6.50	5.75	10.50	12.00	10	0.78	Step Pilot 10.25
16210	90	R	16.50	9.06	6.63	6.25	8.75	6	0.81	
16220	90	Q	16.50	9.06	6.75	8.66	11.25	10	0.81	
16221	110	M	16.50	9.63	7.69	8.66	11.25	10	0.81	
16224	95	D	16.50	10.06	7.84	11.00	12.50	6	0.66	Spot face 6 holes 1.38
16225	107	D	16.50	10.06	7.63	8.78	11.25	10	0.81	
16226	110	A	16.50	10.19	7.38	8.78	11.25	10	1.00	Oil groove
16231	100	I	16.50	9.50	8.25	11.11	13.19	10	1.06	Spot face 10 holes 1.87
16237	120	H	16.50	10.94	8.38	9.44	11.25	10	1.31	5 mtg holes 0.53 & O.B. pilot 12.75
16238	90	M	16.50	11.19	8.13	8.69	11.50	10	1.19	
16240	138	Q	16.50	11.08	8.14	8.74	11.25	10	0.81	
16247	90	S	16.46	8.90	5.92	11.62	13.21	10	0.91	
16248	97	L	16.50	8.69	5.44	10.94	13.19	10	1.25	Spot face 10 holes 1.87
1625	85	E	16.50	8.13	7.50	9.00	11.25	10	0.81	
16251	80	I	16.50	8.50	7.50	9.00	11.25	10	0.81	
16252	75	E	16.50	7.38	6.56	11.25	12.75	5&6	0.66	
16253	90	Q	16.50	8.75	5.88	9.38	11.25	10	0.81	
16259	90	I	16.50	8.88	7.50	11.00	12.50	6	0.66	
16260	95	D	16.50	9.50	7.56	7.13	11.25	10	0.81	
16261	95	D	16.50	9.50	7.56	7.13	11.25	10	0.94	
16262	65	O	16.50	4.47	4.50	7.50	9.00	5	0.53	
16263	70	O	16.50	5.44	5.31	7.50	9.00	5	0.53	
16264	80	O	16.50	5.88	6.44	7.50	9.00	5	0.53	
16265	75	E	16.50	7.22	6.50	11.00	12.50	5&6	0.66	
16267	132	H	16.50	11.50	8.50	8.53	11.25	10	0.81	Notched for sensor
16268	132	H	16.50	11.50	8.60	8.78	11.25	10	0.94	

Part No.	Weight	Drum Type	Brake Face Dia.	Overall Depth	Brake Face Width	Hub Pilot	Bolt Circle	Bolt Holes No.	Bolt Holes Dia.	Special Information
16269	127	H	16.50	11.50	8.60	8.53	11.25	10	0.94	
16271	95	D	16.50	9.50	7.63	8.69	11.25	10	0.81	
16275	110	S	16.46	10.19	6.75	11.62	13.21	10	0.91	
16279	78	Q	16.50	7.62	5.75	11.18	13.19	10	1.03	
16280	125	D	16.50	9.50	7.56	9.44	11.25	10	0.81	
16282	95	H	16.50	9.75	6.63	9.44	11.25	10	1.25	5 mtg holes 0.56 & O.B. pilot 12.75
16283	116	Q	16.50	9.50	7.50	11.05	13.19	10	1.03	
16284	95	D	16.50	9.50	7.56	9.44	11.00	6	0.66	
16289	89	I	16.50	6.40	5.34	10.00	12.75	6	0.81	
16290	105	D	16.50	9.50	7.50	9.44	11.25	10	0.81	
16291	95	D	16.50	9.50	7.63	9.38	11.25	10	0.81	10x0.125 G.S.
16295	115	I	16.50	10.75	9.25	9.44	11.25	10	0.81	
16296	130	D	16.50	11.25	9.06	9.44	11.25	10	0.81	
16297	115	I	16.50	11.75	10.19	9.44	11.25	10	0.81	
16299	77	D	16.50	7.89	5.65	9.44	11.25	10	0.81	
16300	90	E	16.50	8.25	7.56	9.44	11.25	10	1.06	
16310	90	E	16.50	8.25	7.56	9.44	11.25	10	0.81	
16311	95	E	16.50	8.50	7.81	9.44	11.25	10	0.81	
16313	90	D	16.50	9.13	6.95	6.28	8.75	6	1.31	
16320	95	I	16.50	8.75	7.50	9.00	11.25	10	0.81	
16321	95	I	16.50	8.75	7.50	9.00	11.25	10	1.06	
16322	95	I	16.50	9.25	8.00	9.00	11.25	10	0.81	
16324	85	I	16.50	8.25	7.00	11.25	12.75	6	0.66	
16325	90	I	16.50	8.75	7.50	11.25	12.75	5&6	0.78	
16326	90	I	16.50	8.75	7.50	11.25	12.75	6	0.66	
16327	111	I	16.50	8.69	7.64	11.25	12.75	6	0.78	Notched for sensor
16340	95	I	16.50	8.75	7.50	9.00	13.19	10	1.06	
16341	95	I	16.50	8.75	7.25	9.75	13.19	10	1.06	
16343	65	B	16.50	5.06	4.44	9.50	11.25	6	0.53	
16350	100	H	16.50	8.00	5.56	8.69	11.25	10	0.81	5 mtg holes 0.56 & O.B. pilot 13.5
16351	100	H	16.50	8.10	5.45	8.69	11.25	10	1.13	5 mtg holes 0.56 & O.B. pilot 13.5
16352X	121	H	16.50	9.75	6.50	8.78	11.25	10	1.31	
16360	100	H	16.50	10.19	7.44	9.44	11.25	10	1.31	5 mtg holes 0.56 & O.B. pilot 12.75
16363	100	H	16.50	10.19	7.44	9.44	11.25	10	1.31	5 mtg holes 0.56 & O.B. pilot 13
16364	100	H	16.50	10.19	7.44	8.66	11.25	10	1.31	5 mtg holes 0.56 & O.B. pilot 13
16365	100	H	16.50	10.19	7.44	8.66	11.25	10	1.31	5 mtg holes 0.56 & O.B. pilot 12.75
16367	90	H	16.50	8.63	5.63	8.78	11.25	10	1.25	Outboard pilot 13.38
16368	100	H	16.50	10.19	7.44	9.44	11.25	10	0.81	
16375	102	H	16.50	9.38	5.68	9.00	11.25	10	1.31	Notched for sensor
1638	95	I	16.50	8.13	6.88	9.00	11.25	10	0.81	
16384	90	E	16.50	8.13	7.50	11.25	12.75	5	0.66	
16385	85	G	16.50	8.25	7.38	11.25	12.75	5	0.66	Step hub pilot 14.25
16390	108	I	16.50	8.75	7.50	9.50	11.25	10	0.81	
16391	95	E	16.50	8.19	7.25	9.50	11.25	10	0.81	
16392	90	D	16.50	8.25	6.56	9.50	11.25	10	0.81	
16396	111	I	16.50	9.00	7.63	9.50	11.25	10	0.81	Notched for sensor
16400	105	I	16.50	8.75	7.50	9.50	11.25	5 & 6	0.81	5 holes 0.81 & 6 holes 0.66
16401	85	D	16.50	8.25	6.56	9.50	11.25	6	0.66	
16402	110	I	16.50	9.00	7.63	9.50	11.25	5&6	0.78	Notched for sensor
16406	90	I	16.50	9.00	7.50	11.00	12.50	5	0.66	
16408	90	I	16.50	9.00	7.56	11.25	12.75	5&6	0.78	5 holes 0.78 & 6 holes 0.66
16409	90	I	16.50	9.00	7.50	11.25	12.75	6	0.66	
16410	133	Q	16.50	11.06	10.12	9.44	11.00	5&6	0.78	5 holes 0.78 & 6 holes 0.66
16411	104	D	16.50	9.12	7.43	11.25	12.75	6	0.78	
16415	86	I	16.50	9.53	8.34	11.25	12.75	5&6	0.66	
16417	95	D	16.50	9.53	7.75	11.25	12.75	5	0.66	Spot face 5 holes 1.78
16420	87	I	16.50	8.00	6.48	9.38	11.25	10	0.81	
16421	105	I	16.50	10.13	9.13	9.50	11.25	10	0.81	
16422	105	I	16.50	9.94	9.06	9.44	11.00	5	0.78	
16423	105	I	16.50	9.94	9.06	9.44	11.00	6	0.66	
16427	83	Q	16.50	6.50	5.56	9.00	11.25	5	0.78	
16435	79	Q	16.50	6.25	5.31	9.18	11.25	5&6	0.78	
16436	87	P	16.50	8.31	6.25	7.50	8.75	6	0.81	
16437	79	Q	16.50	6.25	5.31	9.18	11.25	5&6	0.66	
1644	85	P	16.50	7.13	5.00	7.13	8.75	6	0.81	

Part No.	Weight	Drum Type	Brake Face Dia.	Overall Depth	Brake Face Width	Hub Pilot	Bolt Circle	Bolt Holes No.	Bolt Holes Dia.	Special Information
16444	91	H	16.50	8.20	5.50	7.13	8.75	6	0.81	Outboard pilot 11.25
16447	79	D	16.50	6.25	5.31	9.44	11.00	5&6	0.78	5 holes 0.78 & 6 holes 0.66
16452	100	H	16.50	7.88	5.25	8.69	11.25	10	1.31	5 mtg holes 0.56
16464X	103	U	16.50	9.44	6.55	11.25	13.19	10	0.94	
16465	124	Q	16.50	9.38	6.38	8.74	11.25	10	1.28	
16466X	112	H	16.50	9.65	6.62	11.25	13.19	10	0.94	
16467	84	Q	16.50	8.00	6.38	9.44	11.25	10	0.81	
16468	84	Q	16.50	7.87	6.25	9.44	11.25	10	0.81	
16486	106	H	16.50	12.15	9.38	8.78	11.25	10	0.96	
1649	80	I	16.50	7.50	6.00	9.38	11.25	10	0.81	
16507	88	T	16.50	9.66	7.58	9.44	11.25	10	0.81	
16516	93	G	16.50	8.25	7.38	11.25	12.75	5	0.75	Step hub pilot 14.25
16520	90	D	16.50	9.13	6.50	9.38	11.25	10	0.81	10x0.125 G.S.
16521	90	Q	16.50	9.88	6.75	9.38	11.25	10	0.81	10x0.125 G.S.
16523	75	I	16.50	7.38	6.13	9.38	11.25	10	0.81	10x0.125 G.S.
16526	81	E	16.50	6.30	5.59	9.25	11.25	5&6	0.78	Notched for sensor
1653	70	E	16.50	6.69	6.13	11.25	12.75	6	0.66	
16531	77	E	16.50	6.88	6.10	11.25	12.75	6	0.78	
16541	129	M	16.54	11.81	9.63	11.42	13.81	10	0.91	Spot face 10 holes 1.63
16543	99	D	16.50	9.19	7.56	9.50	11.50	6	0.66	
16555	100	I	16.50	8.75	7.30	9.00	11.25	10	1.03	
16570	70	I	16.50	6.88	5.75	11.25	12.75	5&6	0.66	
16571	97	H	16.50	9.04	5.95	8.78	11.25	10	1.28	
16573	90	F	16.50	9.04	6.36	8.78	11.25	10	1.25	Outboard pilot 13.38
16580	70	E	16.50	6.94	6.00	11.00	12.50	5&6	0.66	
16595	98	H	16.50	8.02	5.31	8.78	11.25	10	1.28	Outboard pilot 13.38
16599	123	D	16.50	8.67	7.67	8.78	11.25	10	1.03	
16600X	100	H	16.50	9.52	6.38	8.78	11.25	10	1.31	
16605	87	H	16.50	7.88	5.35	9.50	11.25	10	0.81	
16615	115	H	16.50	9.31	6.31	8.65	11.25	10	0.91	2 tap holes 12MMx1.5 thru 11.25 BC
16618	95	I	16.50	8.92	7.50	9.38	11.25	10	0.81	
16624	106	D	16.54	10.93	8.38	11.42	13.19	10	0.91	Spot face to 1.62 with Dia 0.10 deep
16640	95	Q	16.50	9.06	6.75	9.44	11.25	10	0.81	
16647	118	H	16.50	11.19	8.62	8.78	11.25	10	0.94	Outboard pilot 13.19
1666	90	I	16.50	9.25	7.88	9.44	11.25	10	0.81	
16660	129	H	16.50	10.37	7.38	8.78	11.25	10	1.19	
16663	71	E	16.50	5.75	5.31	11.00	12.75	6	0.66	
16664	82	N	16.50	7.72	4.69	6.28	8.75	6	1.03	3 mtg holes 0.53
16670	75	E	16.50	7.06	6.44	11.50	12.75	5&6	0.66	
16671	114	Q	16.50	9.69	7.31	8.78	11.25	10	1.03	
16672	113	Q	16.50	9.69	7.31	8.78	11.25	10	1.03	
16676	90	I	16.50	7.87	6.62	11.00	12.50	12	0.63	Step hub pilot 11.25
1670	95	A	16.50	9.50	7.63	9.44	13.19	10	1.06	Spot face 10 holes 1.87
16701	100	A	16.50	9.50	7.63	11.26	13.19	10	1.06	
16702	120	Q	16.50	9.50	7.38	9.44	11.25	10	0.84	
1671	96	K	16.50	9.50	7.63	7.13	10.00	8	0.81	Spot face 8 holes 1.87
16717	115	I	16.50	12.00	10.56	9.44	11.25	10	0.81	
16719	120	I	16.50	12.00	10.56	9.44	13.19	10	1.06	Spot face 10 holes 1.87
16726	100	I	16.50	8.65	7.62	11.00	12.50	6	0.65	
16727	105	I	16.50	8.75	7.50	11.00	12.50	5	0.66	
16728	107	Q	16.50	8.81	7.44	11.25	12.75	5&6	0.66	
16729	107	H	16.50	10.63	7.63	9.44	11.25	10	0.81	
1673	75	D	16.50	7.25	5.63	9.44	11.25	10	0.81	
16731	124	Q	16.50	8.44	7.24	11.25	12.75	5&6	0.78	
16732	86	D	16.50	7.25	5.62	9.44	11.25	10	1.00	
16734	105	D	16.50	8.75	7.44	9.50	11.25	10	1.00	
16739	85	H	16.50	8.81	5.87	8.53	11.25	10	1.25	Outboard pilot 13.38
16757	114	H	16.50	11.18	7.44	8.78	11.25	10	0.94	
16759	86	D	16.50	7.25	5.62	9.44	11.25	10	1.25	
16765	150	A	16.50	10.94	8.44	8.53	11.25	10	0.84	
16778	99	I	16.50	8.50	7.38	11.25	12.75	5&6	0.78	
16779	105	I	16.50	8.13	7.31	11.25	12.75	5&6	0.78	
16782	123	H	16.50	10.62	7.62	8.78	11.25	10	0.94	
16786	107	H	16.50	10.35	7.54	8.78	11.25	10	0.93	Notched for sensor
16788	109	H	16.50	10.25	7.38	9.00	10.83	8	0.97	

Part No.	Weight	Drum Type	Brake Face Dia.	Overall Depth	Brake Face Width	Hub Pilot	Bolt Circle	Bolt Holes No.	Bolt Holes Dia.	Special Information
16790	95	Q	16.50	9.06	6.75	9.87	11.25	10	0.81	
16791	100	I	16.50	8.50	7.44	8.66	11.25	10	0.81	
16792	110	H	16.50	10.54	7.50	8.78	11.25	10	0.94	
16794	110	H	16.50	10.63	7.63	9.00	11.25	10	0.81	
16795	110	H	16.50	10.63	7.63	8.53	11.25	10	0.81	
16796	105	H	16.50	10.44	7.63	8.53	11.25	10	0.81	Notched for sensor
16797	110	H	16.50	10.38	7.70	8.53	11.25	10	0.81	
16801	126	Q	16.50	11.25	8.94	9.44	11.25	10	1.06	
16802	111	H	16.50	10.38	7.38	8.66	11.25	10	1.50	
16804	125	E	16.50	7.70	7.38	9.00	13.19	10	1.03	
16811	165	H	16.50	12.13	9.36	8.53	11.25	10	0.81	
16814	132	H	16.50	12.39	9.63	8.78	11.25	10	0.94	
16820	105	D	16.50	9.50	7.56	9.88	11.25	10	0.81	
16827	130	H	16.50	11.47	8.94	8.78	11.25	10	0.94	10 weight pockets
16832	106	D	16.50	8.75	7.44	9.50	11.25	5&6	0.81	
16834	129	H	16.50	11.99	9.23	8.78	10.83	8	0.97	
1684	90	I	16.50	8.88	7.50	9.88	11.25	10	0.81	
16854X	150	H	16.50	11.46	8.97	8.78	11.25	10	0.94	
16862	62	D	16.50	5.94	4.83	11.00	12.75	6	0.66	
16865	70	I	16.50	6.88	5.75	11.25	12.75	6	0.53	
16866	92	D	16.50	6.91	5.38	11.25	12.75	6	0.78	
16867	70	I	16.50	7.06	5.63	11.25	12.75	6	0.53	
16868	85	I	16.50	7.50	6.31	11.25	12.75	5&6	0.66	
16869	80	I	16.50	7.81	6.75	11.25	12.75	5	0.66	
16870	75	E	16.50	7.44	6.50	9.44	11.00	6	0.66	
16871	80	E	16.50	7.81	7.00	9.44	11.00	5&6	0.66	
16872	80	E	16.50	7.81	7.00	9.44	11.00	5	0.78	
16874	107	E	16.50	8.25	7.19	9.44	11.00	5&6	0.78	5 holes 0.78 & 6 holes 0.66
16875	100	E	16.50	8.40	7.56	9.44	11.00	6	0.65	
16876	85	E	16.50	8.25	7.44	11.25	12.75	5	0.65	
16878	85	I	16.50	8.44	7.50	11.00	12.50	6	0.78	
16879	91	E	16.50	8.31	7.61	13.50	15.00	10	0.53	
16880	85	E	16.50	8.13	7.44	9.38	11.25	10	0.81	
16881	90	D	16.50	8.75	6.56	9.38	11.25	10	0.81	
16883X	128	H	16.50	10.25	7.38	11.25	13.19	10	1.00	
16884	80	E	16.50	7.56	6.75	11.25	12.75	5&6	0.65	
16886	85	E	16.50	8.00	7.38	11.25	12.75	6	0.65	
16887	85	E	16.50	8.00	7.44	10.25	11.25	6	0.78	
16888	85	E	16.50	8.00	7.44	10.25	11.25	10	0.81	
16889	85	E	16.50	8.00	7.44	10.25	12.75	6	0.78	
1689	97	I	16.50	8.31	6.62	8.69	11.25	10	0.81	
16894	100	I	16.50	8.44	7.50	11.25	12.75	5	0.65	
16895	70	I	16.50	7.06	5.56	9.44	11.25	10	0.81	
16896	80	I	16.50	7.56	6.50	11.00	12.50	5&6	0.65	
16896	70	B	16.00	7.06	5.50	11.00	12.50	5	0.66	
16900	75	E	16.50	7.13	6.44	11.00	12.75	6	0.65	
16901	85	I	16.50	8.00	6.75	11.00	12.50	5&6	0.65	
16902	80	H	16.50	8.09	5.44	8.66	11.25	10	0.81	
16903	80	H	16.50	8.09	5.44	8.66	11.25	10	1.06	
16904	90	H	16.50	8.10	5.48	8.78	11.25	10	1.28	
16905	91	H	16.50	8.10	5.48	8.78	11.25	10	0.94	
16907	85	E	16.50	8.13	7.56	11.00	12.75	6	0.65	
16910	85	I	16.50	7.56	6.31	8.66	11.25	10	0.81	
16911	90	D	16.50	8.62	6.50	8.66	11.25	10	0.81	
16912	90	Q	16.50	8.62	6.50	9.38	11.25	10	0.81	
16913	105	I	16.50	9.25	7.50	11.00	12.50	12	0.65	
16917	92	I	16.50	8.63	7.44	8.66	11.25	10	0.81	
1692	90	I	16.50	9.06	7.75	9.50	11.25	10	0.81	
16920	108	F	16.50	9.16	5.38	9.00	10.83	8	1.03	
16927	115	I	16.50	8.63	7.43	8.66	11.25	10	1.00	
16930	90	I	16.50	8.87	7.62	11.00	12.75	6	0.65	
16931	90	D	16.50	8.75	6.63	9.50	11.50	6	0.65	
16937	65	I	16.50	6.50	5.44	11.00	12.50	6	0.65	
16941	90	H	16.50	8.81	6.00	8.75	11.25	10	0.81	5 mtg holes 0.56
16942	103	D	16.50	8.94	6.33	8.66	11.25	10	1.50	

Part No.	Weight	Drum Type	Brake Face Dia.	Overall Depth	Brake Face Width	Hub Pilot	Bolt Circle	Bolt Holes No.	Bolt Holes Dia.	Special Information
16946	119	E	16.50	10.00	9.00	9.44	11.00	5&6	0.78	5 holes 0.78 & 6 holes 0.66
1695	108	D	16.50	10.13	7.56	9.44	11.25	10	0.81	
1696	85	I	16.50	8.00	6.50	10.25	11.25	10	0.81	
16961	105	D	16.50	8.44	6.50	10.88	12.50	12	0.66	Step hub pilot 11.25
16962	108	H	16.50	10.25	7.44	8.53	11.25	10	1.28	
1697	100	M	16.50	10.44	8.00	9.44	11.25	10	0.81	
16975	112	I	16.50	10.31	9.13	9.44	11.25	10	0.81	
16979	95	I	16.50	8.00	6.50	10.88	12.75	24	0.65	Step hub pilot 11.25
16982	158	F	16.50	12.75	7.75	9.44	11.25	10	1.06	Outboard pilot 13.25
16985	85	H	16.50	8.56	5.44	8.78	11.25	10	0.94	
16988	95	H	16.50	8.56	5.44	8.66	11.25	10	1.31	
16990	98	M	16.50	8.81	6.55	11.25	13.19	10	0.94	
16991	120	D	16.50	12.44	10.50	9.44	11.25	10	0.81	
16992	100	E	16.50	7.43	6.40	11.25	12.75	6	0.78	
16993	100	M	16.50	7.63	6.59	11.25	12.75	6	0.78	
16995	107	D	16.50	8.44	7.37	11.25	12.75	5&6	0.78	
16997	107	I	16.50	8.75	7.50	10.50	12.75	5&6	0.78	Exciter pattern J
1700	100	C	17.00	11.50	6.30	6.75	8.75	6	0.81	
1701	100	C	17.00	11.50	6.75	9.75	11.25	10	0.81	
17020	125	C	17.00	11.50	6.54	9.75	11.25	10	0.81	Step brake face 4.25
1706	125	C	17.00	11.50	6.54	9.44	11.25	10	0.81	Step brake face 4.25
17076	90	H	17.00	8.31	6.81	9.00	11.25	10	0.94	5 mtg holes
1708	100	M	17.25	9.75	7.25	9.44	11.25	10	0.81	
1711	125	A	17.25	10.88	8.88	9.44	13.19	10	0.81	
17111	125	A	17.25	10.88	8.88	9.44	13.19	10	1.06	
1712	136	A	17.25	10.88	8.88	9.44	11.25	10	0.81	
1713	125	A	17.25	10.88	8.88	9.44	11.25	10	1.06	
1714	125	A	17.25	10.88	8.88	10.63	13.19	10	1.06	
17168	85	E	17.25	5.31	4.26	10.50	12.00	10	0.94	
1717	110	S	17.25	6.38	4.63	9.44	10.63	10	0.53	
17196	100	I	17.25	9.68	7.63	11.00	13.19	10	1.03	
1720	100	P	17.00	5.81	4.66	10.00	12.00	8	0.64	
17210	70	N	17.25	6.50	4.44	8.38	11.25	10	1.14	
17212	95	D	17.25	9.81	6.50	7.13	11.25	10	0.81	
17225	115	A	17.25	7.50	5.11	10.63	13.25	12	0.87	
17226	85	A	17.25	7.44	5.56	11.00	13.25	12	0.78	
17232	75	B	17.25	6.00	5.31	11.00	12.75	6	0.66	
17235	105	I	17.00	13.00	7.63	10.50	13.19	10	1.25	5 mtg holes
17250	85	U	17.25	7.13	4.50	8.76	11.25	10	0.81	
17295	70	I	17.25	5.75	4.44	10.50	12.00	10	0.78	
17378	70	B	17.25	5.71	4.75	13.86	15.13	8	0.78	
17379	65	B	17.25	5.44	4.25	11.27	13.00	8	0.78	
17440	132	H	17.25	7.50	4.80	10.25	12.00	10	0.67	Step pilot 10.5
17489	55	E	17.00	5.00	4.31	10.50	12.00	10	0.78	
1759	95	A	17.25	8.81	6.94	11.00	13.25	12	0.66	
17598	85	U	17.00	7.13	4.50	8.76	11.25	10	0.81	
1761	85	Q	17.25	8.88	6.19	9.44	11.25	10	0.81	
17611	138	D	17.25	8.38	7.62	11.00	12.75	6	0.64	
17614	78	A	17.25	6.44	5.84	11.00	12.75	6	0.64	
17645	95	A	17.25	8.56	6.56	11.00	13.19	10	1.03	
1771	110	E	17.00	7.44	6.44	8.66	11.25	10	1.28	
17711	104	D	17.00	7.38	6.50	11.25	12.75	6	0.65	Equally spaced exciter ring mounting
1775	65	E	17.25	5.09	4.44	9.88	11.63	10	0.66	
17762	64	E	17.25	5.18	4.50	11.25	12.75	6	0.65	
17789	80	U	17.25	6.81	4.62	11.25	12.50	24	0.78	
1780	100	Q	17.25	10.00	6.34	9.44	11.25	10	0.81	
1786	68	P	17.25	5.63	4.44	9.00	11.25	10	1.13	
17861	80	H	17.25	6.81	4.88	8.75	11.25	10	0.81	
17862	68	K	17.25	5.62	4.44	9.00	11.25	10	1.14	
1787	65	I	17.25	6.69	5.44	11.00	12.75	6	0.66	
1788	80	B	17.25	7.38	6.50	11.00	12.75	6	0.66	
18000	140	I	18.00	8.75	7.50	9.50	11.25	10	0.81	
18006	140	I	18.00	8.75	7.50	9.50	11.25	6	0.66	
18018	120	I	18.00	9.75	7.88	11.11	13.19	10	1.09	
18040	140	I	18.00	8.75	7.50	9.00	11.25	10	0.81	

Part No.	Weight	Drum Type	Brake Face Dia.	Overall Depth	Brake Face Width	Hub Pilot	Bolt Circle	Bolt Holes No.	Bolt Holes Dia.	Special Information
18050	140	I	18.00	8.75	7.50	9.00	11.25	10	1.06	
18060	140	I	18.00	8.75	7.50	9.00	13.19	10	0.81	
18070	140	I	18.00	8.75	7.50	9.00	13.19	10	1.06	Spot face 10 holes 1.87
1808	140	D	18.00	9.75	7.88	9.44	11.25	10	0.81	
1809	140	D	18.00	9.75	7.88	9.44	11.25	10	1.06	
1810	140	D	18.00	9.75	7.88	9.44	13.19	10	0.81	
1811	130	D	18.00	9.75	7.88	9.44	13.19	10	1.06	
1813	150	D	18.00	9.50	7.50	9.44	11.25	10	0.81	
1814	140	I	18.00	10.00	8.50	9.44	11.25	10	0.81	
18141	140	I	18.00	10.00	8.50	9.44	11.25	6	0.81	
18142	140	I	18.00	10.00	8.50	9.44	13.19	10	1.06	
18143	140	I	18.00	10.00	8.50	9.44	11.25	10	1.06	
18171	140	I	18.00	8.75	7.50	11.25	12.75	6	0.66	
18172	140	I	18.00	9.25	8.00	11.25	12.75	6	0.66	
18173	140	I	18.00	9.25	8.00	11.25	12.00	5	0.78	
18174	140	I	18.00	8.88	7.56	11.25	12.75	6	0.78	
18175	140	I	18.00	8.50	7.41	11.25	12.75	6	0.78	Exciter hole pattern E
1818	140	I	18.00	9.50	8.25	9.44	11.25	10	0.81	
1820	140	I	18.00	10.88	9.63	9.44	13.19	10	1.06	
1821	155	Q	18.00	12.63	7.75	9.00	13.19	10	1.06	10x0.125 G.S.
1822	155	H	18.00	11.94	7.63	10.94	13.19	10	1.44	5 mtg holes 0.56
1829	140	L	18.00	8.75	7.50	10.50	13.19	10	1.06	
18313	175	Q	18.00	10.27	7.38	11.25	13.19	10	1.19	
18314	175	Q	18.00	10.38	7.63	10.50	13.19	10	1.19	
18410	140	D	18.00	9.50	7.38	11.11	13.19	10	1.06	
18441	140	I	18.00	8.75	7.50	10.63	13.25	12	0.66	Step hub pilot 11.001
1850	140	D	18.00	9.75	7.63	9.88	11.25	10	0.81	
18685	140	P	18.00	8.72	7.44	8.66	11.25	10	0.81	
18788	138	E	18.00	8.25	7.63	11.00	12.75	6	0.66	
18856	138	Q	18.00	8.75	7.50	9.50	11.25	6	0.66	
18863	138	D	18.00	8.75	7.50	9.50	11.25	6	0.78	
19702	160	K	19.69	7.29	5.88	11.03	13.19	10	1.03	2 mtg holes 16x2.0
19936	140	E	19.69	7.69	6.94	9.50	11.25	10	0.78	
2000	185	L	20.00	10.25	8.75	9.44	11.25	10	0.81	
2001	185	L	20.00	10.25	8.75	9.44	11.25	10	1.06	
2002	185	L	20.00	10.25	8.75	9.44	13.19	10	0.81	
2003	176	L	20.00	10.25	8.75	9.44	13.19	10	1.06	
20031	200	S	20.00	13.00	10.50	9.44	13.19	10	1.06	
20032	200	S	20.00	13.00	10.50	9.44	13.19	10	0.81	
20033	232	S	20.00	12.50	9.13	9.44	13.19	10	1.06	
2005	232	S	20.00	12.50	8.50	10.63	13.19	10	1.06	
20051	223	A	20.00	13.00	10.50	10.63	13.19	10	1.06	
20053	237	S	20.00	12.50	8.50	10.63	13.19	6	1.03	
20056	205	S	20.00	12.63	8.63	9.44	13.19	10	1.06	
20057	236	S	20.00	12.63	8.63	11.00	13.19	10	1.06	
20058	205	S	20.00	12.50	8.25	9.00	13.19	10	1.06	
2009	200	L	20.00	10.25	8.75	10.63	13.19	6	0.81	
20091	200	S	20.00	13.00	10.50	10.63	13.19	6	0.81	
2009B	200	L	20.00	10.25	8.75	10.63	13.19	6	0.81	
2011	200	L	20.00	10.25	8.75	9.50	11.25	10	0.81	
2012	185	L	20.00	10.25	8.75	9.50	11.25	10	1.06	
2013	185	L	20.00	10.25	8.75	9.50	13.19	10	0.81	
2014	220	E	20.00	11.75	9.00	14.00	16.00	10	0.81	Additional flange
2016	200	M	20.00	10.75	8.50	11.25	12.75	5	0.78	
2019	154	L	20.00	10.25	8.75	9.50	13.19	10	1.06	
2020	225	L	20.00	11.38	8.20	11.00	12.50	12	0.66	Step hub pilot 11.25
20201	200	L	20.00	10.50	8.75	12.13	15.00	12	1.06	
2021	210	L	20.00	9.25	7.75	13.25	15.00	12	0.78	Step hub pilot 13.5
2022	203	L	20.00	9.25	7.50	11.00	12.50	12	0.66	Step hub pilot 11.25
2023	240	L	20.00	10.94	8.61	13.25	15.00	12	0.78	Step hub pilot 13.5
20231	202	L	20.00	10.94	8.61	13.25	15.00	24	0.94	Step hub pilot 13.5
2025	190	H	20.25	11.50	7.69	10.94	13.19	10	1.44	5 mtg holes 0.56
2026	220	A	20.00	13.25	6.50	12.75	15.00	12	0.78	
2027	221	L	20.00	10.94	8.61	11.00	12.50	12	0.66	Step hub pilot 11.25
2028	160	I	20.00	7.50	6.50	13.75	15.25	6	0.78	

Part No.	Weight	Drum Type	Brake Face Dia.	Overall Depth	Brake Face Width	Hub Pilot	Bolt Circle	Bolt Holes No.	Bolt Holes Dia.	Special Information
2029	160	D	20.00	8.13	6.50	9.00	14.50	6	0.78	
2031	187	K	20.25	8.81	8.06	10.63	13.25	12	0.66	
2034	205	L	20.00	10.22	8.50	11.00	12.50	6	0.78	
2035	190	A	20.00	11.25	9.00	9.50	11.25	6	0.66	
20351	190	A	20.00	11.25	9.00	9.50	11.25	6	0.75	
20353	130	B	20.00	7.68	6.00	12.75	15.00	12	0.75	
20354	150	B	20.00	8.68	7.00	12.75	15.00	12	0.75	
2036	163	B	20.25	9.00	8.06	12.75	14.88	12	0.91	Step hub pilot 13.25
20365	167	K	20.25	9.56	7.56	10.63	13.25	12	0.66	Step pilot 11
20382	200	B	20.00	6.75	4.94	11.38	13.13	18	0.78	Step pilot 11.88
20461	130	B	20.25	7.25	5.00	17.25	18.38	16	0.66	
20462	140	B	20.25	7.94	5.88	16.38	18.38	32	0.66	
2055	350	S	20.25	14.50	12.00	12.63	15.00	8	1.13	Spot face 8 holes 2.25
20570	236	A	20.25	10.31	7.88	12.75	15.00	8	0.78	
20580	216	A	20.25	10.88	8.12	13.62	16.00	8	0.87	
20619	120	E	20.25	6.57	5.63	12.75	14.50	6	0.78	
20622	170	B	20.25	9.00	8.06	10.63	13.25	12	0.81	Step hub pilot 11
20727	175	B	20.25	9.28	8.25	10.50	13.00	12	0.69	Ribbed (8 ribs)
2077	160	T	20.00	7.50	5.44	7.75	9.50	6	0.88	
20790	180	B	20.00	10.13	8.63	11.75	14.00	14	1.03	
20805	150	A	20.00	8.25	5.50	11.00	12.50	12	0.66	Step hub pilot 11.25
20832	250	S	20.00	11.00	8.38	13.25	15.00	24	0.78	
2201	270	B	22.00	9.63	8.13	13.25	15.00	12	0.78	
2400	500	M	24.00	14.19	11.69	16.00	18.00	12	0.78	Step hub pilot 16.5
2603	380	E	26.00	12.31	11.25	19.50	21.00	16	0.91	
26232	350	B	26.00	10.38	8.94	16.50	18.00	24	0.91	
2626	450	L	26.00	13.38	11.00	19.00	22.00	12	1.03	
26491	380	P	26.00	12.00	8.50	16.50	18.00	24	0.87	
26603	380	E	26.00	12.31	11.25	19.50	21.00	16	0.91	
26608	350	E	26.00	9.62	9.62	26.00	30.13	45	0.69	
26616	275	E	26.00	7.63	7.63	26.00	29.19	45	0.69	Flange is on outside of drum
2675	500	B	26.00	16.06	12.56	17.75	21.00	16	1.50	
2685	450	B	26.00	13.00	11.31	17.00	19.50	12	1.06	
28400	280	O	23.00	6.25	5.61	10.49	13.50	8	0.66	
28401	320	O	23.00	6.13	5.50	10.49	13.50	8	0.66	
3000	480	E	30.00	8.38	8.38	30.00	34.00	30	0.66	
30100	600	B	30.00	12.38	10.88	21.50	24.50	16	1.03	
30101	600	B	30.00	13.75	11.69	17.00	23.50	18	1.03	
30730	450	E	30.00	8.63	8.63	30.00	34.00	45	0.69	
30851	675	B	30.00	15.00	13.88	21.50	25.00	16	1.16	
30852	600	B	30.00	12.38	10.69	21.50	25.00	16	0.91	

This is just a partial list of what we make. We make over 2000 part numbers so if you do not see what you are looking for please give us a call.



WWW.DURABRAKE.COM

Don't forget to use durabrake.com for:

- Parts Interchange
- Parts Dimensions
- Online Literature
- Contact Information

www.durabrake.com is easy to use and can save you time.

Webb P/N	DuraBrake P/N	Webb P/N	DuraBrake P/N	Webb P/N	DuraBrake P/N
60660B	14437	61612F	14210	62072F (OBS)	20056
60876F	16729	61625F (OBS)	16253	62074F (OBS)	15074
61503F (OBS)	14057	61627F (OBS)	16931	62092F (OBS)	16870
61510B	14412	61628F (OBS)	16543	62115B	16115
61511F	14411	61659F (OBS)	14139	62117F	16289
61517F (OBS)	14840	61665 (OBS)	15665	62119F (OBS)	16865
61518B (OBS)	14418	61727F	16727	62199F	16879
61526F	14260	61728F (OBS)	16728	62200F	16290
61527B	14574M	61730F	16173	62240F	16325
61528B	14575M	61731F	16731	62292F (OBS)	16284
61529F	14529	61733F	16930	62358F	12110
61536F	14736	61774F (OBS)	16901	62385F (OBS)	1488
61542F (OBS)	14055	61775F (OBS)	16132	62437F (OBS)	12437
61544F (OBS)	14325	61777F (OBS)	16878	62439F (OBS)	12140
61545F (OBS)	14116	61780F	16149	62562F (OBS)	14990
61547F	14810	61788F	18788	62573F (OBS)	16384
61548F	14590	61791F	16791	62585F (OBS)	1416
61549F (OBS)	14680	61791F	16917	62634F (OBS)	16340
61554F	14668	61841F (OBS)	18410	62670B	16671
61555F (OBS)	14111	61850F	18070	62671F	16687
61566F	14566	61852F (OBS)	18040	62672F	16672
61567F	14967	61853F	18175	62699F (OBS)	14299
61571F	14971	61854F	18171	62755F (OBS)	15258
61573	14119	61855F	18174	62989F (OBS)	15989
61573B (OBS)	14930	61856F	18856	62997F	16997
61574F	14974	61858F (OBS)	18000	63030F	14313
61576F	14576	61859F	18685	63031B	16031
61577F	14977	61860F (OBS)	18441	63032F	16032
61581F (OBS)	14981	61862F	18050	63035F	14201
61583F (OBS)	14972	61863F (OBS)	18863	63152F (OBS)	15152
61586F	14806	61864F (OBS)	18060	63163F (OBS)	13111
61591F	14973	61870F (OBS)	18313	63213F (OBS)	16663
61595F	14700	61950B	14950X	63236 (OBS)	14236
61598F	14395	61951B	14951X	63240F (OBS)	16026
61599F	14899	61958B	14685X	63241F (OBS)	16605
61600B	14280	61959B	14686X	63279F (OBS)	16279
61601F	14090	61980F (OBS)	14980	63290F	14011
61601F	14391	61988F	14988	63294F	14294
61601F	14850	61989F	14989	63410F	16410
61602F (OBS)	14720	61991F	14991	63411F (OBS)	16910
61603F	1473	61992F	14992	63417F (OBS)	16120
61604F (OBS)	14740	61999F	14998	63423F (OBS)	15423
61605F (OBS)	14100	62027F (OBS)	2027	63427F	16427
61606F	14550	62055F (OBS)	15055	63430F (OBS)	16896
61606F	14606	62057F (OBS)	20570	63435F (OBS)	16435
61609F	14140	62071F (OBS)	20057	63436F	16437

Webb P/N	DuraBrake P/N	Webb P/N	DuraBrake P/N	Webb P/N	DuraBrake P/N
63437F (OBS)	16154	64049F	14086	64434F (OBS)	15177
63447F	16447	64050B	16048X	64436 (OBS)	16436
63617F, 63647F	12617	64051F	16051	64438F (OBS)	14190
63628F (OBS)	12628	64053B	16053X	64440F (OBS)	16444
63630F	12630	64057F	16049	64441F (OBS)	14560
63631F	12440	64059F	15116	64442 (OBS)	14112
63632F (OBS)	12632	64062F	15112	64444F	14245
63633F (OBS)	12633	64065B	15908X	64445F	14455
63634F	12634	64073F	14573	64446F (OBS)	14345
63635F	12635	64082F (OBS)	15802	64448F	14848
63635F	12410	64089F	15113	64449F	14249
63636F (OBS)	12636	64101F	14580	64450F (OBS)	14600
63637F	12637	64105F	14530	64453F	14186
63639F (OBS)	12639	64106F (OBS)	14106	64454F	14223
63645F (OBS)	12240	64113F	14525	64455F	14120
63650F	12365	64115F	14523	64456F (OBS)	14456
63653F (OBS)	12414	64117F, 64119F	14518	64457F (OBS)	14457
63654F	12506	64125B	16125X	64459F (OBS)	14259
63654F	12998	64401F (OBS)	14420	64460F (OBS)	14326
63658F	12510	64402F (OBS)	14400	64463F (OBS)	16263
63680F	12680	64402F (OBS)	14350	64464F	14244
63688F	12450	64403F	14167	64465F (OBS)	15251
64001F (OBS)	14504	64404F	14169	64466F	16420
64003F, 64113F	14519	64405F	14166	64467F	16467
64004F	14503	64406F	14970	64468F	16468
64008F	14509	64407F (OBS)	14718	64469F (OBS)	15169
64009F	14508	64408F	14717	64473F (OBS)	14473
64015F	14513	64409F (OBS)	14409	64474	14474
64016F	14394	64410F (OBS)	14408	64474F (OBS)	14423
64018F	14018	64412F (OBS)	14252	64477F	14278
64026F	15126	64413F	14243	64478F	14078
64028F	14828	64415F (OBS)	14415	64479F	14051
64031F (OBS)	16262	64416F (OBS)	15855	64481F	14647
64035F	16065	64417F	14417	64482F (OBS)	14482
64035F	16075	64418F (OBS)	14279	64483F	14124
64036F	14030	64419F (OBS)	14094	64484F (OBS)	14484
64038F	14040	64420F (OBS)	14430	64485F (OBS)	14286
64039F	15139	64421F (OBS)	13303	64486F (OBS)	14285
64040F	15115	64425F	13845	64489F	14674
64041F	16073	64426F	14271	64492F (OBS)	14402
64042B	16240	64427F (OBS)	14155	64494F (OBS)	14242
64044F	14025	64428F (OBS)	14428	64496F (OBS)	14422
64045B	16045	64429F (OBS)	13290	64498F (OBS)	14108
64046F	14038	64430F	13170	65004F	14512
64047F (OBS)	16267	64432F	14432	65145B	14145
64048F	14048	64433F (OBS)	14072	65147B	14147

Webb P/N	DuraBrake P/N	Webb P/N	DuraBrake P/N	Webb P/N	DuraBrake P/N
65152B	16352X	65550B	14255X	66815F	16143
65153B	14453X	65551B	14569X	66816F	16147
65154F (OBS)	14454X	65554B	14254X	66817F	16144
65155B	14355X	65555B	14655X	66818F (OBS)	16148
65156B (OBS)	14256	65600B	16600X	66822F	16077
65157B	14682	65607B (OBS)	16607	66823F (OBS)	16223
65159B (OBS)	14159	65650B	16035	66825B (OBS)	16266
65161B	16161X	65651F	16155	66826F	16226
65162F	16162	65654B	16033	66827B	16268
65163F	16138X	65670B	16146	66829F (OBS)	16269
65165B	16465	65710B	16571	66830B	14831
65166B	16062X	65735F	14735	66834F	16834
65167F	16057	65739B	16739	66843B	16843
65169B	16060X	65753F (OBS)	15753	66847F (OBS)	15847
65170B	16064	65758F (OBS)	15758	66848F (OBS)	15848
65172B	16522	65829B (OBS)	15050	66852F	16852
65173B	16615	66036F (OBS)	16520	66853F	16853
65174B	16174	66066F (OBS)	16210	66854F	16854X
65175F	16375	66076F (OBS)	16180	66857F	16857
65176F	16176	66095F (OBS)	16220	66861F (OBS)	15080
65177B	16177	66096F (OBS)	16640	66862F	16962
65179B	16066X	66200F (OBS)	16702	66864F	16792
65182B	16182X	66201F (OBS)	16281	66865B	16123
65183B	16183X	66231F (OBS)	16231	66866B	16074X
65197B (OBS)	16197	66246F	16170	66867B	16786
65246F (OBS)	14446	66283F	16283	66868F (OBS)	16124
65250F (OBS)	16040	66350F	16460	66871F	16071
65256B	14463	66353F	16757	66873F	16145
65257	1433	66364B	16464X	66874F	16793
65266B	16992	66366B	16466X	66875F	16141
65511F (OBS)	16150	66580 (OBS)	14581	66878F	16788
65514B	14571	66626F	16126	66879F (OBS)	16789
65515B (OBS)	14615	66660B	16660	66881B (OBS)	16282
65516B	16151	66661B	16783	66883F	16796
65526B	16526	66663B	16883X	66884F	16782
65540B (OBS)	14274	66668B	16668	66886B	16368
65541B	14541X	66683F (OBS)	16871	66887B (OBS)	16587
65542B	14542	66694F (OBS)	16872	66888F	16588
65543B	14943X	66786F (OBS)	16790	66890B	16590
65545	14545	66800F	16647	66891F (OBS)	16921
65545B	14945X	66801B	16802	66892F	16797
65546B	14546X	66810F (OBS)	16020	66893F	16795
65547B	14947	66811	16811	66895F	16794
65548B	14448X	66811F	16122	66896F	16922
65549	14549	66812F	16070	66897F (OBS)	16363
65549B	14153X	66814F	16814	66898F (OBS)	16172

Webb P/N	DuraBrake P/N	Webb P/N	DuraBrake P/N
66899B	16360	68911F (OBS)	16259
67205F (OBS)	16717	68916F (OBS)	16260
67407B	16507	68918F	16618
67486B (OBS)	16486	68921F	16850
67518F	16874	68922F (OBS)	16417
67519F (OBS)	16300	68923F (OBS)	16224
67537F	16310	68924F (OBS)	15830
67547F (OBS)	16880	68926F (OBS)	16911
67599F (OBS)	16599	68927F	16421
68012F	16402	68928F (OBS)	17020
68013F	16396	68931F	16422
68036F	16111	68940F	16940
68037F	16113	68942F	16139
68710F (OBS)	16392	68946F	16946
68730F	16390	68955F (OBS)	16884
68731F	16320	68958F	16516
68732F	16832	68970B	16531
68733F	16321	68981F	16778
68734F	16734	68982F (OBS)	16779
68760F	16760	68983F (OBS)	16894
68765F	16400	68985F	16985
68797B	16767	68986B	16986
68801F (OBS)	16801	68988F	16988
68844F	16452	68989F	16367
68844F	16351	68995B (OBS)	16995
68845F	16904	69549	16549
68846B	16905	69789F	15789
68848F	16902	69790F	15790
68849F (OBS)	16903	69827B	16827
68862F (OBS)	16862		
68865F	16401		
68878F (OBS)	16570		
68879F (OBS)	16820		
68880F	15040		
68882F	16385		
68885F (OBS)	16295		
68887B	16650		
68891F	16296		
68895F	16720		
68896F (OBS)	16900		
68897F	16907		
68898F (OBS)	16670		
68902 (OBS)	16406		
68903F	16408		
68909F (OBS)	16196		
68910F (OBS)	16580		

-Interchanges are based on best available information and DuraBrake assumes no liability on the accuracy of this information



WWW.DURABRAKE.COM

Don't forget to use durabrake.com for:

- Parts Interchange
- Parts Dimensions
- Online Literature
- Contact Information

www.durabrake.com is easy to use and can save you time.

Gunitite P/N	DuraBrake P/N	Gunitite P/N	DuraBrake P/N	Gunitite P/N	DuraBrake P/N
1373B (OBS)	15050	2537B (OBS)	16872	2762	17762
1525L (OBS)	16210	2539	16900	2770	14420
1545A (OBS)	16870	2539A (OBS)	16570	2770A	14400
1745 (OBS)	16180	2540A (OBS)	18000	2770A	14350
1746H (OBS)	16291	2543 (OBS)	16543	2774	14680
1746H (OBS)	16295	2544 (OBS)	16931	2782	16411
1900 (OBS)	16284	2546B	16850	2833 (OBS)	16436
1904 (OBS)	16166	2546D	16400	2845	13845
1985 (OBS)	14750	2554	16150	2847 (OBS)	15255
2015 (OBS)	16172	2562	14990	2848	14848
2040 (OBS)	16110	2563A (OBS)	14563	2849	16901
2040A (OBS)	16120	2573	16384	2850	14018
2062 (OBS)	16865	2577A	16149	2851	16727
2143 (OBS)	16324	2581A	14484	2851D	16726
2158 (OBS)	15090	2585 (OBS)	1416	2852B	14877
2187A (OBS)	16224	2598A	16417	2853	16406
2210 (OBS)	16896	2602	16728	2855	15855
2213A (OBS)	16896	2603	14430	2908A (OBS)	15210
2239B (OBS)	16259	2604	14566	2912B	16151
2242 (OBS)	14559	2607	14210	2912F	16153
2249 (OBS)	16868	2612 (OBS)	14140	2912H	16152
2255	16253	2645	16154	2913A	14913
2255 (OBS)	16881	2647	15847	2913B	14615
2256A	14429	2658D	14390	2920	16065
2256C	14428	2658E	14700	2920B	16920
2283C	16894	2658G	14395	2954	14119
2288 (OBS)	16196	2663 (OBS)	14600	2954A	14576
2303	13303	2665	14116	2974	16325
2306 (OBS)	16050	2667	14740	2982A	18175
2311 (OBS)	16869	2667	14667	2983C	16874
2324 (OBS)	14170	2668	14139	2989	15989
2392 (OBS)	16884	2669 (OBS)	14072	2993	16993
2394	14394	2672	16760	2997D	16997
2400	14590	2673	14673	3002B (OBS)	16427
2401	14530	2684 (OBS)	15830	3012A	16396
2401B	14106	2697	14970	3012B	16402
2459 (OBS)	16340	2702	16311	3018A	16390
2500 (OBS)	16252	2705	16290	3022B	16992
2501 (OBS)	16040	2706	14564	3023	14078
2505A (OBS)	16392	2717	14717	3030A	14313
2511A	14850	2718	14271	3031A	16031
2512	16879	2728B	14810	3037	16327
2517C	14317	2741 (OBS)	15169	3039	16526
2517H	14280	2742	14120	3045A	14417
2521A	14840	2747C	18171	3046C	14463
2537A (OBS)	16871	2747F	18174	3054	14051

Gunitite P/N	DuraBrake P/N	Gunitite P/N	DuraBrake P/N	Gunitite P/N	DuraBrake P/N
3060A	15080	3266	18266	3485B	14201
3071X (OBS)	14125	3279 (OBS)	14279	3488	20580
3086X (OBS)	15121	3285	14286	3490	16922
3090X (OBS)	16121	3285A	14285	3508	14668
3094	14094	3289, 3020	16289	3510	14351
3097	14097	3290	14153X	3512	14682
3097A	14981	3291A	14090	3513	16057
3097B	14098	3292	16115	3524	14057
3111A	16111	3294	14294	3535	14435
3120	16729	3295A	16778	3537	14011
3125	14325	3329	13290	3544	16409
3134	14828	3333 (OBS)	14441	3557	12440
3136A	16139	3381A	16112	3557A	12410
3136B	16516	3383	16296	3573	16573
3141	16794	3402	16145	3574A	14157
3141B	16141	3402A	16788	3576	16782
3151	14415	3408	14108	3595	16595
3152	15152	3409	14409	3595	16904
3154	14456	3409A	14408	3595A	16905
3155	14155	3410AX	16368	3596	14577
3158	14158	3410X	16360	3596B	14947
3158	14541X	3411	14411	3597B	14453X
3159 (OBS)	14159	3413R (OBS)	14419	3598A	16168
3166	16795	3417	13170	3598B	16167
3168	16421	3419	15177	3600	16602
3169	14169	3422	14242	3600A	16792
3169A	14166	3423	14473	3601	14422
3174	12617	3436	14278	3602	14702
3186	14186	3437A	16058	3603	14055
3195	16791	3438	14156	3604	14603
3197	18788	3441	16123	3605	16605
3219	14971	3444	12365	3607	16862
3219	14973	3445	14455	3608	14255X
3219A	14977	3446 (OBS)	14446	3609X	16663
3242A	16420	3447	14718	3610	14124
3243	14243	3448	16902	3611	17611
3244B	14246	3450	14423	3612	16026
3244C	14245	3451 (OBS)	14560	3613	17711
3249	14249	3452	14112	3614	17614
3251	15251	3454	14223	3615	14126
3252	14252	3456	14345	3616	20570
3257	16857	3467B	12637	3617	15617
3258	15258	3472 (OBS)	15055	3618	16618
3259	14259	3473 (OBS)	15074	3620	18685
3260 (OBS)	14326	3474	16020	3646	14091
3265	16032	3475	16070	3649	13114

Gunitite P/N	DuraBrake P/N
3655	13112
3665	16665
3667	14542
3674	14647
3674A	14674
3676	16988
3676A	16367
3678	16650
3678A	16720
3681	16866
3686	14355X
3687	16687
3699	16797
3710	16171
3710	16571
3721AX	14575M
3721BX	14578
3721BX	14943X
3721X	14574M
3726	14372
3726X	14254X
3729	14257
3731	14731
3744	14991
3744A	14998
3753	14976
3753A	14978
3753X	14950X
3754	14951X
3757	16757
3758X	16161X
3759	16759
3759A	16732
3760B	14571
3765	16765
3771X	14945X
3772X	16372X
3774	14454X
3774A	14458
3782	16647
3784	16875
3786X	16060X
3796X	16696X
3798	16946
3800X	14792M
3807A	16854X

Gunitite P/N	DuraBrake P/N
3828 (OBS)	18172
8656	16907
8670 (Obs)	14100
8671	14550

-Interchanges are based on best available information and DuraBrake assumes no liability on the accuracy of this information



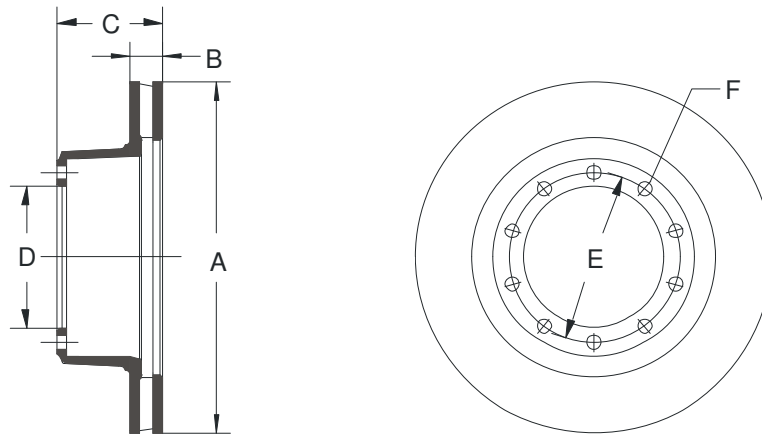
WWW.DURABRAKE.COM

Don't forget to use durabrake.com for:

- Parts Interchange
- Parts Dimensions
- Online Literature
- Contact Information

www.durabrake.com is easy to use and can save you time.

DURABRAKE BRAKE DISCS



SPECIFICATIONS, DIMENSIONS, FEATURES AND APPLICATIONS

Part Number	Wt. (lbs)	Type	(A) Overall Dia.	(B) Brake Thick-ness	(C) Overall Depth	(D) Pilot Dia.	(E) Bolt Circle Dia.	(F) Bolt Holes		ABS	Application
								Number	Dia.		
56641	80	HAT	17.10	1.77	5.19	5.31	6.61	12	0.75	No	MCI "J" & "D" Bus Front & Tag
56642	80	U	17.10	1.77	5.64	8.50	10.50	10	5/8"-18	No	MCI "J" & "D" Bus Drive Axle
72201A	42	HAT	15	1.44	4.44	6.00	7.25	10	0.59	Cast	Truck Front and Rear Axles
72202A	39	HAT	15	1.44	3.21	6.00	7.25	10	0.59	Cast	Navistar
72251A	39	HAT	15	1.44	3.50	5.40	6.75	5	0.78	Cast	Navistar Front Axles
72252	58	U	15	1.44	5.90	14.00	12.75	5	0.76	No	Navistar
72261A	39	HAT	15	1.44	3.50	5.40	6.75	6	0.78	Cast	Navistar Front and Rear Axles
72262	52	U	15	1.44	6.80	7.00	8.75	6	0.81	No	Navistar Front and Rear Axles
72301	45	HAT	15.38	1.54	3.40	6.00	7.25	10	0.59	No	GMC/Chev. Front & Rear Axles
74461	21	HAT	12	0.87	1.34	2.96	4.33	6	0.43	No	AM General Vehicle
74462	15	HAT	12	1.02	1.84	3.55	4.33	6	0.43	No	AM General Vehicle
75521A	42	U	13	1.38	4.76	5.91	6.89	12	M12	Cast	NABI/Optare Rear Axle
76601A	80	U	17.10	1.77	5.65	7.64	9.84	10	5/8"-18	Bolt-on	MCI "E" Bus All Axles
76602A	80	U	17.10	1.77	5.31	7.64	8.66	10	M16-1.5	Cast	Van Hool "C" Bus Drive Axle
76603	79	U	17.10	1.77	5.35	7.64	8.66	10	M16-1.5	No	Prevost Bus Front & Tag Axle
76604	96	U	17.10	1.77	7.08	7.64	9.84	10	5/8"-18	Cast	Prevost Bus Drive Axle
76605	82	U	17.10	1.77	5.65	8.50	10.50	10	5/8"-18	No	MCI Bus
76605	78	HAT	17.24	1.77	5.31	7.87	9.25	10	M16-1.5	No	Van Hool "T" Bus Front & Tag Axle
76606	80	U	17.10	1.77	5.65	7.64	9.84	10	5/8"-18	Bolt-on	NABI Compo Bus
76608	78	U	17.10	1.77	5.12	8.00	9.25	10	M16-1.5	No	Van Hool "A" Bus Front & Tag Axle
76621	77	HAT	17.10	1.77	5.12	5.15	6.61	12	0.75	No	Van Hool "C" Bus Front & Tag Axle
76641	78	HAT	16.98	1.77	4.54	5.31	6.50	14	0.59	No	Prevost Bus Front & Tag Axle

Our Brake Disc Capabilities:

- Heavy-Duty, Medium-Duty, Specialty Light-Duty
- Existing Applications with Improved Designs of Various Characteristics
- New Applications
- Various Engineered Coatings for Performance or Appearance



THE GOLD STANDARD OF BRAKE DRUMS, ROTORS, AND HUBS

PO Box 1480
 Los Altos, CA 94022
 Phone: 408-748-0400
 Fax: 408-748-0410
www.durabrake.com

INTERCHANGE



<i>AM General P/N</i>	<i>DuraBrake P/N</i>
EX4857	74461
6002218	74462
<i>Bendix P/N</i>	<i>DuraBrake P/N</i>
141272	72301
141273	72262
141475	72261A
141476	72251A
141494	72201A
141627	72252
1137986	76604
II37415N	76603
K021959	76604
<i>Bluebird P/N</i>	<i>DuraBrake P/N</i>
4320586	72301
<i>Dana P/N</i>	<i>DuraBrake P/N</i>
W19WA102	72261A
<i>Ford P/N</i>	<i>DuraBrake P/N</i>
YC3Z-1125AA	72262
<i>General Motors P/N</i>	<i>DuraBrake P/N</i>
15514357	72301
15514406	72301
15619970	72301
<i>Gunite P/N</i>	<i>DuraBrake P/N</i>
D6052	72301
D6115A	72252
D6121A	72252
D6133	72201A
D6151	72201A
D6175M	72201A
D6176M	72202A
D6183M	72201A
D6194AM	72261A
<i>International P/N</i>	<i>DuraBrake P/N</i>
1646750C1	72201A
1646770C1	72261A
1646770C2	72261A
1648518C1	72252
2509073C1	72251A
3531661C1	72251A
3531661C2	72251A
3531662C2	72202A
573922C1	72251A
573922C2	72251A
589843C1	72262
<i>MCI P/N</i>	<i>DuraBrake P/N</i>
15-02-1067	56641
15-03-1012	56642
15-02-1010	76601A

<i>Meritor P/N</i>	<i>DuraBrake P/N</i>
122527	72262
122729	72301
122962	72252
123440	72301
123547	76601A
123550	72202A
123552	72201A
123572	72261A
123573	72251A
123642	56642
123647	76606
68323736	76602A
68326014	56641
<i>Prevost P/N</i>	<i>DuraBrake P/N</i>
611188	76603
611300	76641
611456	76603
611457	76604
621672	76604
<i>Van Hool/ABC P/N</i>	<i>DuraBrake P/N</i>
10721062	76602A
10977055	76602A
11027856	76608
N508030009	76605
N508030038	76621
N508030040	76621
<i>Volvo P/N</i>	<i>DuraBrake P/N</i>
3946486	72301
<i>Webb P/N</i>	<i>DuraBrake P/N</i>
54220P	56641
54251P	72262
54301P	72301
54769P-65	72251A
54770P-65	72261A
54771P-65	72201A
55060P	56642



-DuraBrake is constantly adding new rotors and encourages contacting us for updated list or status of new rotors or applications
 -Interchanges are based on best available information and DuraBrake assumes no liability on the accuracy of this information