

TRAILMARK

ST. AUGUSTINE



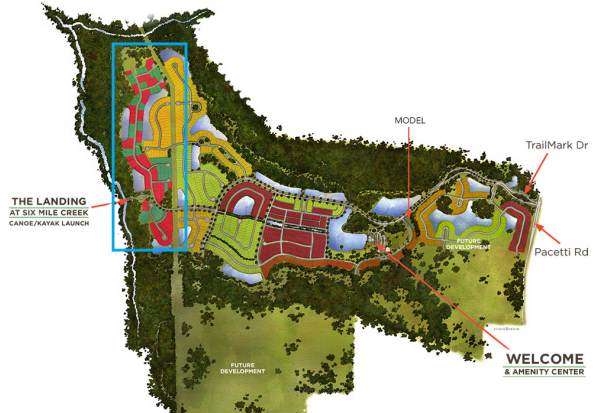
• MASTERCRAFT •

ABOUT

TRAILMARK

Ideally located between Jacksonville and historic St. Augustine, Florida, TrailMark offers doorstep access to A-rated schools, shopping, local cuisine, pristine beaches, and world famous golf courses. TrailMark was thoughtfully planned to help residents live life connected – with nature and with your community.

From natural oak hammocks to miles of bike and walking trails to winding waterways, TrailMark offers everything you wish, including a state-of-the-art amenities center with a resort-style pool, playfields, fitness center and one-of-a-kind Lakeside Camp House where memories can be created to last a lifetime.



Map is conceptual and not to scale. Actual development, including any planned or proposed features, may vary from the map and be outside of the control of MasterCraft Builder Group.

03/03/21

HIGHER STANDARDS 2.0

TRAILMARK

Some builders call them upgrades, we call them standards.

Higher standards are inherent in our designs. Look for our red diamond to signify these amazing features that come standard in each quality MasterCraft home.

ELEGANT INTERIORS

- ◆ Smooth walls for a more elegant look
- ◆ Sherwin Williams LOW-VOC paint in 6 color choices – stylish, environmentally safe and durable
- ◆ 5 1/4" base molding
- ◆ 3 1/4" door casing
- ◆ Solid core interior doors on all bedrooms, bathrooms and laundry room
- ◆ 8' tall interior doors throughout first floor
- ◆ Ceiling fan prewire in study, family room, all bedrooms, and at rear lanai
- ◆ Family foyer drop zone with USB outlet
- ◆ Samsung top load washer and gas dryer with moisture sensor
- ◆ Oversized laundry room with space for washer, dryer, utility sink, and cabinets.
- ◆ 10' tall ceilings downstairs (per plan) and 9' tall ceilings upstairs
- ◆ First two stair treads are stained wood (per plan)
- ◆ 17" ceramic tile floors in foyer, kitchen, breakfast nook, family room, laundry, first floor halls and all baths
- ◆ Stain resistant carpet by Shaw with five-year warranty and 6 lb pad
- ◆ Decorative light fixtures (per plan) by Kichler
- ◆ Single knockdown ceilings
- ◆ Free-sliding vinyl coated shelving in all bedroom closets. Double hung shelving on longest wall in master closet
- ◆ Brushed nickel Kwikset lever handles on all doors
- ◆ Recessed lighting in kitchen, hallways, and showers
- ◆ 12' sliding glass doors in family room (per plan)
- ◆ Room for secondary refrigerator in pantry or Laundry room

GOURMET MASTERCRAFT KITCHENS

- ◆ 42" Upper cabinets with crown moulding in choice of colors and style
- ◆ Solid wood cabinet doors and dovetailed drawers with soft close feature
- ◆ Granite countertops with choice of undermount stainless steel sink
- ◆ Samsung 36" stainless steel gas cooktop with powerful heat and precise control
- ◆ Samsung top control dishwasher with stainless steel interior, LinearWash technology, flex tray and auto-release features
- ◆ Samsung built-in convection microwave and convection wall oven with digital display and smart control
- ◆ Samsung 36" under-cabinet stainless steel vent hood, vented to the outside
- ◆ Samsung side-by-side refrigerator with LED lighting, digital display, external water and ice dispenser
- ◆ California style kitchen island with cabinetry storage and finished paneling
- ◆ Moen stainless finish single lever pullout faucet with lifetime warranty
- ◆ Choice of cabinet pulls and knobs
- ◆ Moen 1/2 hp compact garbage disposal with VORTEX motor and convenient countertop air switch

PERSONAL ATTENTION & WARRANTIES

- ◆ Personal design center appointment
- ◆ Smart home technology design appointment
- ◆ Pre-construction meeting to review final selections and plans
- ◆ Pre-drywall orientation

- ◆ Homeowner orientation
- ◆ Builder representative to accompany you at closing
- ◆ One-year MasterCraft warranty
- ◆ Ten-year structural warranty through Centricity
- ◆ Three year limited factory warranty on all Samsung appliances*
- ◆ One-Year termite monitoring with advanced bait Station including repair bond up to \$1,000,000
- ◆ Termite monitoring with advanced bait stations including repair bond up to \$1,000,000

LUXURIOUS MASTER BATHROOM

- ◆ Elegant freestanding tub by Maax (per plan)
- ◆ Upgraded 8" widespread Moen Eva chrome faucets with lifetime warranty
- ◆ Raised height vanities in your choice of color and style with porcelain undermount sinks
- ◆ Choice of quartz or granite vanity countertops
- ◆ Solid wood cabinet doors and dovetailed drawers with soft close feature
- ◆ Choice of cabinet pulls and knobs
- ◆ 3/8" clear glass frameless shower enclosure
- ◆ Oversized shower with 7" Moen Waterhill "goose neck" shower arm and head
- ◆ Shower walls tiled from floor to ceiling
- ◆ Separate toilet room for privacy
- ◆ Vanity sized mirror with overhead decorative lighting

LUXURIOUS SECONDARY BATHROOMS

- ◆ Frameless 3/8" clearglass enclosures at showers (per plan)
- ◆ Raised height vanities in your choice of color and style, with porcelain undermount sink(s)
- ◆ Solid wood cabinet doors with dovetailed drawers with soft close feature
- ◆ Choice of cabinet pulls and knobs
- ◆ Choice of quartz or granite vanity countertops
- ◆ Tub/shower walls tiled to ceiling
- ◆ Moen oversized chrome showerheads
- ◆ Moen Eva chrome faucet(s) with lifetime warranty
- ◆ Durable Porcelain coated steel tub(s)

ENERGY SAVINGS AND ADVANCED CONSTRUCTION FEATURES

- ◆ Residential energy guarantee through Centricity
- ◆ Site specific HERS energy rating which provides your home an individualized efficiency score
- ◆ Natural gas piping to cooktop, water heater, dryer and rear lanai
- ◆ Rinnai tankless gas water heater

*See sales associate for details

- ◆ R19 wall insulation
- ◆ R38 ceiling insulation
- ◆ Superior 2x6 exterior wall construction
- ◆ Low-E double pane vinyl frame tilt-out windows
- ◆ Lennox 16 SEER high efficiency, 2-stage, heating and cooling system(s) with variable speed air handler
- ◆ LED bulbs in all lighting fixtures including recessed can lights
- ◆ LED strip lighting in garage, laundry room and walk-in closets
- ◆ Toto elongated "universal" (raised) height toilets in all bathrooms with 1.28 gallons per flush
- ◆ High quality Advantech sub floor on 2nd stories for more quiet and solid feeling floors
- ◆ Innovative Zip System wall sheathing to minimize air leakage and provide greater structural durability
- ◆ Synthetic roof underlayment for greater protection
- ◆ Easy access emergency water shut-off valve in garage

CLASSIC EXTERIORS

- ◆ 8' Thermatru entry door with glass insert
- ◆ 6" Seamless gutters with downspouts on the front elevation
- ◆ 50-Year limited warranty architectural shingles by GAF
- ◆ Three-car finished garage with oversized 8' tall insulated garage doors with glass inserts
- ◆ Ultra quiet garage door opener
- ◆ Attractive Florida friendly landscape package with full irrigation and sodded yard
- ◆ Decorative coach light(s) at garage
- ◆ Two sets of flood lights off rear of home
- ◆ Superior low-maintenance cementitious siding by James Hardie
- ◆ Low maintenance vinyl soffit and aluminum fascia with choice of color
- ◆ Covered rear lanai
- ◆ Weatherproof electrical outlet at front and rear of home
- ◆ Two hose bib locations

HI-TECH FEATURES

- ◆ Samsung SmartThings hub to control a wide range of connected devices
- ◆ Security system with motion sensor, contacts on all windows & doors, and three (3) months free monitoring with remote access capability
- ◆ Kwikset Dakota handle at front door with SmartCode electronic deadbolt
- ◆ Ecobee 3 lite Wi-Fi enabled / lifestyle customizable thermostat
- ◆ Up to 8 locations of customer choice of CAT6 or RG6 prewires for connectivity and flexibility
- ◆ 30" structured wiring panel
- ◆ TV prep conduit in one location of your choosing

11/04/21



PRICING

TRAILMARK

FLOOR PLAN	SQ. FEET	BED	BATH	GARAGES	STORIES	COASTAL/ LOW COUNTRY	CRAFTSMAN/ BUNGALOW	FARMHOUSE
PAIGE	2,455 - 3,208	3 - 5	2.5 - 4	3	1 - 2	\$595,000	\$602,000	\$605,000
TYLER	2,720 - 3,230	4 - 5	3 - 4	3	1 - 2	\$639,000	\$642,000	\$646,000
TANNER	2,853 - 3,631	3 - 5	2.5 - 4	3	1 - 2	\$673,000	\$686,000	\$679,000
BENJAMIN	2,989	4	3	3	1	\$691,000	\$701,000	\$705,000
DREW II	3,025	4	3	3	1	\$711,000	\$721,000	\$725,000
CARSON*	3,243 - 3,311	4 - 5	3	3	1	\$732,000	\$742,000	\$740,000
BRANDON	3,507	5	3 - 4	3	2	\$739,000	\$750,000	\$754,000
THOMAS PLUS	3,702	5	4	3	2	\$771,000	\$781,000	\$786,000
CHADWICK*	3,895 - 4,237	5	4 - 4.5	3 - 4	2	\$799,000	\$808,000	\$815,000
KASIE*	3,996	5	4.5 - 5	3 - 4	2	\$829,000	\$839,000	\$841,000

* Multi-generational option available.

Prices subject to change without notice. 11/18/21



Shawn Fussell

Senior New Home Consultant

TrailMark Model Home | [Map](#)

41 Dolcetto Drive, St. Augustine, FL 32092

Mon-Sat 10AM-6PM; Sun 11AM-5PM

 904.479.5033