

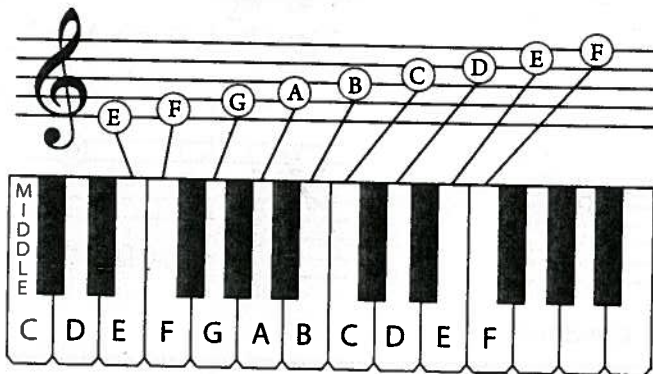
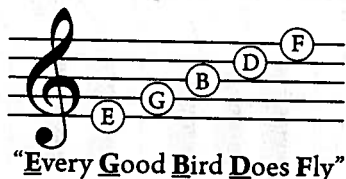
Treble Clef

A Clef is a symbol at the beginning of the staff that assigns letter names to the individual lines and spaces of the staff. The first seven letters of the alphabet (A through G) are used to name these lines and spaces.

The **Treble Clef** (also known as the "G" clef) encircles the second line of the staff and names it "G." This G is above the middle C on a piano keyboard.



Treble Clef Lines



Treble Clef Spaces



STUDENT ASSIGNMENT

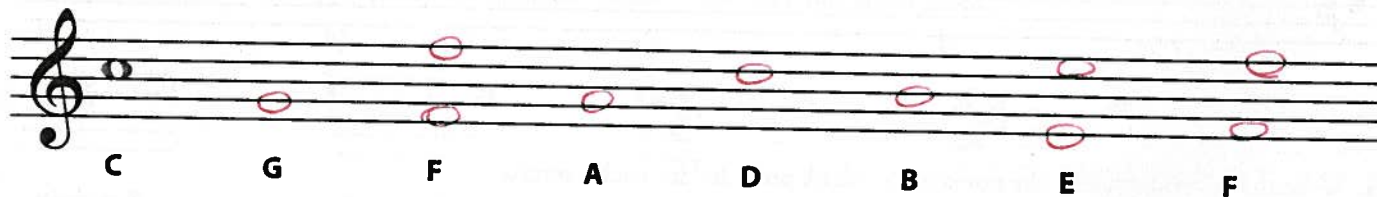
1. Trace the treble clef and draw four more in the staff provided.



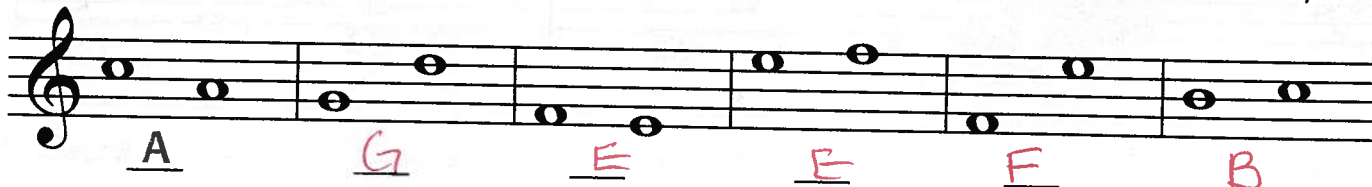
2. Write the letter name of each note in the blank provided below it. The first one has been done for you.



3. On the staff, draw the notes indicated by the letters below. There may be more than one correct answer for some. The first one has been done for you.



4. Write the name of the lower note in the blank provided beneath each exercise. The first one has been done for you.



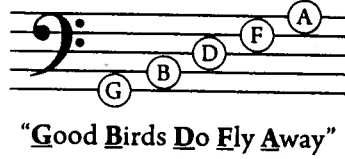
Bass Clef

The **Bass Clef** (also known as the "F" clef) indicates the fourth line of the staff with a dot and a colon and names it "F." This F is below the middle C on a piano keyboard.

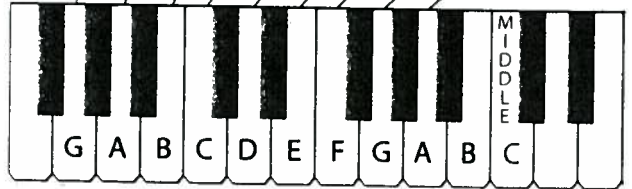
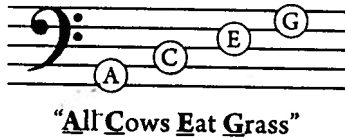


Note: The dot and the colon indicate the 4th line is named "F."

Bass Clef Lines



Bass Clef Spaces



STUDENT ASSIGNMENT

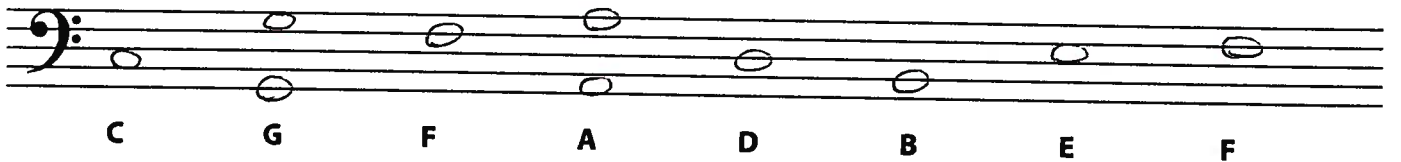
1. Trace the bass clef and draw four more in the staff provided.



2. Write the letter name of each note in the blank provided below it.



3. On the staff, draw the notes indicated by the letters below. There may be more than one correct answer for some.



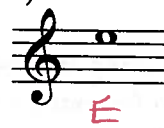
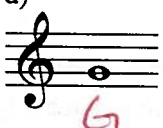
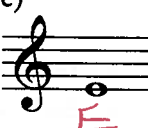
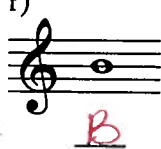
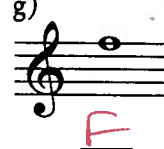





4. Write the word spelled by the notes in the blank provided for each exercise.




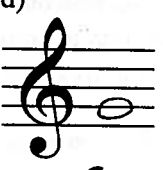

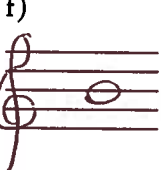

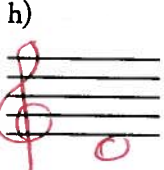
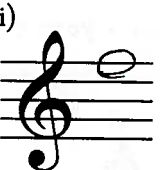



Treble Clef Review

1. Write the note name in the blank provided. For notes you have not yet learned, use what you know to determine the answer.


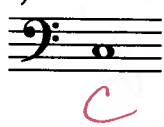
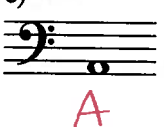
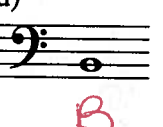
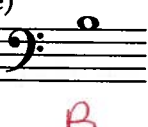

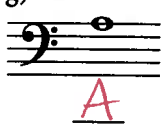
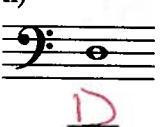

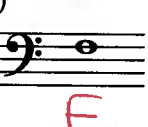
a) 	b) 	c) 	d) 	e) 
f) 	g) 	h) 	i) 	j) 

2. Draw the note on the appropriate line or space. Draw a treble clef if one is not given.


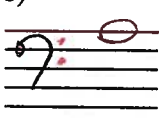


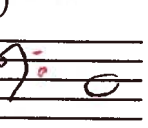
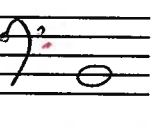
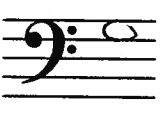



a)  lower F	b)  C	c)  A	d)  G	e)  higher D
f)  B	g)  higher E	h)  lower D	i)  higher F	j)  lower E

Bass Clef Review

1. Write the note name in the blank provided. For notes you have not yet learned, use what you know to determine the answer.

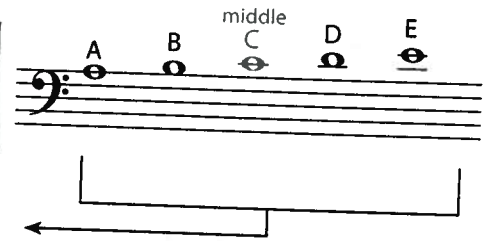
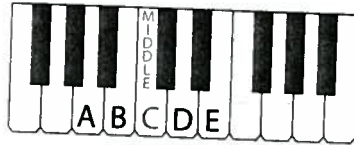
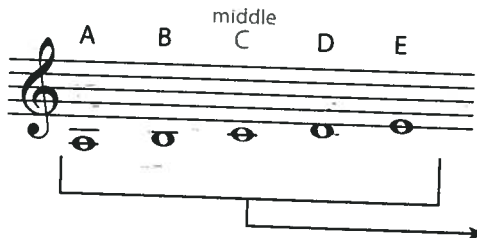
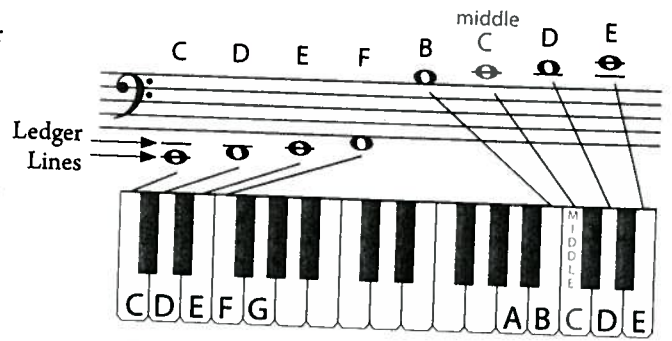
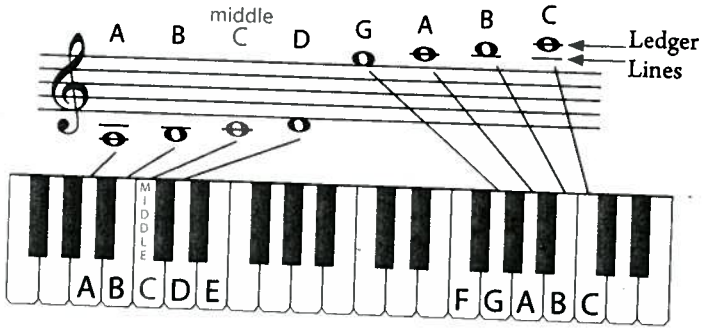
a) 	b) 	c) 	d) 	e) 
f) 	g) 	h) 	i) 	j) 

2. Draw the note on the appropriate line or space. Draw a bass clef if one is not given.

a)  higher B	b)  higher A	c)  F	d)  lower G	e)  D
f)  lower B	g)  higher G	h)  lower A	i)  E	j)  C

Ledger Lines

Ledger Lines are short, horizontal lines added above or below the staff to extend the range of notes of the staff.



While these pitches can be written differently depending on the clef, they sound the same.

STUDENT ASSIGNMENT

1. Write the note name in the blank provided below each note.

a)

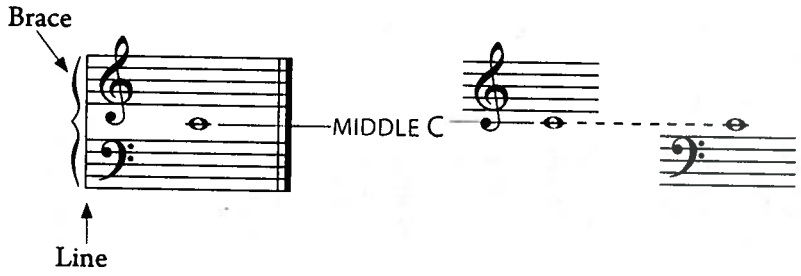
b)

c)

d)

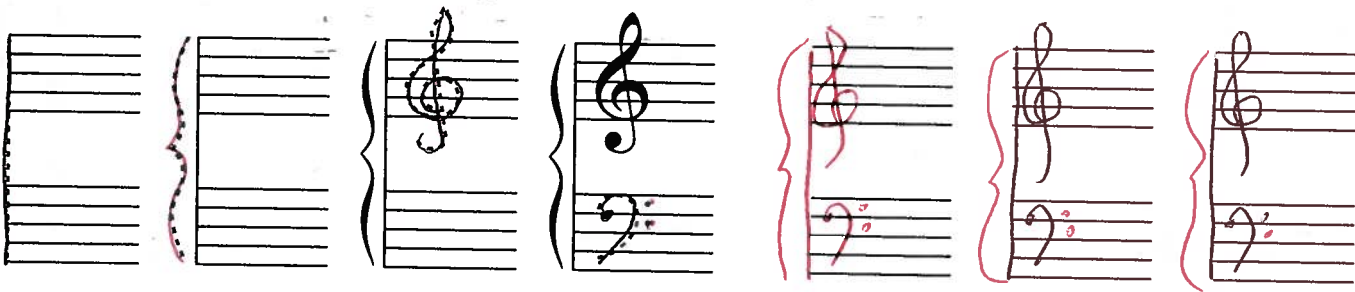
Grand Staff

The **Grand Staff** connects the treble and bass clef staves with a line and a brace. Middle C, notated with a ledger line, connects these two staves.

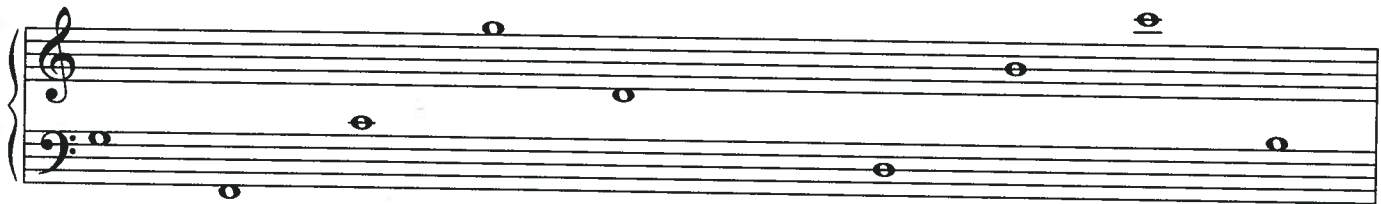


STUDENT ASSIGNMENT

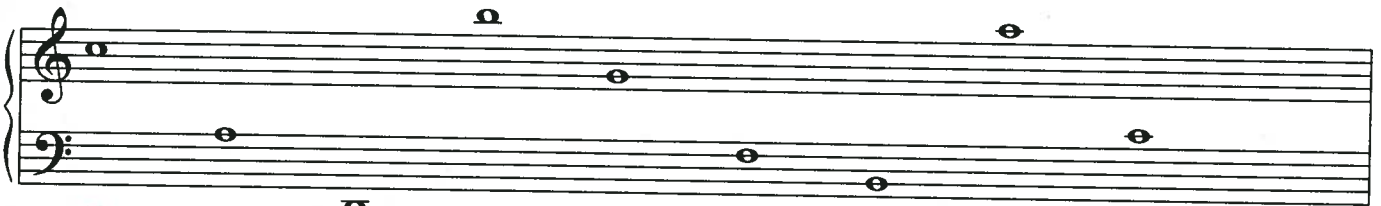
1. Trace the four steps to creating a grand staff. Then create three grand staves of your own. Be sure to include a line, a brace, a treble clef, and a bass clef.



2. Write the note name in the blank provided below each note.



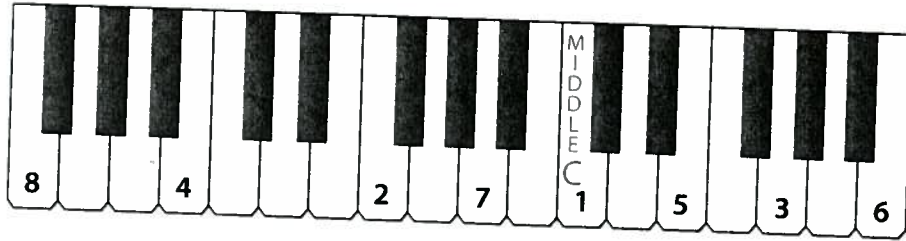
G F C G D C D B C B



C A D B G F B C C E

Grand Staff & Ledger Line Review

1. Draw a note head in the appropriate place on the grand staff according to the numbers given below. Each number below the staff corresponds with a labeled key on the piano keyboard.



REVIEW

2. Write the note name in the blank provided below each note on the treble clef staff. For notes you have not yet learned, use what you know to determine the answer.

a) F

b) C

c) D

d) G

e) C

3. Write the note name in the blank provided below each note on the bass clef staff. For notes you have not yet learned, use what you know to determine the answer.

a) A

b) E

c) F

d) C

e) C

4. Write the note name in the blank provided below each note. Remember to check which clef is used.

a) A

b) D

c) B

d) E

e) B

f) B

g) A

h) B

i) G

j) F