



/ 2011 ROAD

CYCLING'S GREATEST LEGACY.

Every Trek Road bike has greatness in its bloodline, from our top-of-the-line Madone with its unequalled history of nine Tour de France victories, to our brilliantly designed but still affordable all-aluminum platforms. Experience the legacy.



/ RACE PERFORMANCE

6

Madone 6 Series SSL / Madone 6 Series
Madone 5 Series / Madone 4 Series
Cronus / Ion



/ SPORT

22

Madone 3 Series / 2 & 1 Series / Lexa



/ TRIATHLON

28

Speed Concept 9 Series / Speed Concept 7 Series
Speed Concept 2 Series

women's specific design.

FITS BETTER FROM THE START.

Women's Specific Design (WSD) bikes are designed to fit women better from the start. You'll find WSD bikes throughout the Road collection. We believe in the value of difference. And because you're designed differently than a man, your bike should be, too.



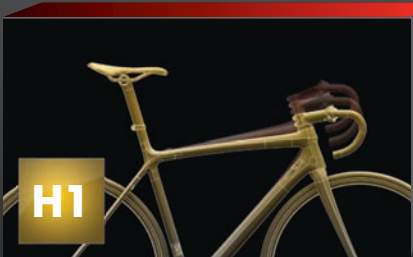
INTRODUCING THE GARY FISHER COLLECTION.

Forward thinking, forward moving. Dreamed by Gary Fisher. And unleashed by Trek. It's a brand within a brand. Now seen by more people, found in more bike shops, ridden in more places. More dreams realized, worldwide. The Gary Fisher Collection from Trek. Fisher dreamed. Trek unleashed.

/ FIT

THE RIGHT FIT IS EVERYTHING.

A bike that fits right is pure bliss. Freedom on two wheels. Your ticket to the perfect ride. And now the 9X Tour-winning Madone geometry comes in three different fits: H1, H2, and H3. No matter your body shape, flexibility, or size, we've got the right fit to give you the most comfort, efficiency, stability, and power on the road. Each fit is different, but each has the same single-minded purpose: make the best bike on the planet fit every rider. Perfectly.



1 / H1

Developed for athletes with extraordinary range of pelvic rotation, superior core stability, and specific aerodynamic performance requirements, H1 offers the lowest hand position options available for Madone.



2 / H2

Perfect for the majority of riders, H2 retains all the handling geometry and ride characteristics of the H1 platform, with a slightly higher head tube height to accommodate riders with slightly less pelvic rotation and core stability.



3 / H3

H3 increases head tube height a bit beyond H2, with a slight handling adjustment to increase the bike's stability. Perfect for those who need a more upright position, but still want the utmost performance out of their ride.

/ TREK CARBON

IT ALL STARTS HERE.

Trek engineers and manufactures carbon fiber frames here in our Waterloo, WI, USA headquarters. We've been doing it for over twenty years, and we've produced more carbon frames worldwide than anyone else.

Trek continues to pioneer what's possible with carbon right here at home, in the highest-tech carbon bicycle facility in the world. Our frames are imagined, tested, and perfected by our 37 carbon engineers, including 11 Composite Materials Engineering specialists and 9 bona fide rocket scientists. (Why rocket scientists? Because the aerospace industry is THE hotbed of carbon innovation.)

Why staff a high-overhead facility with the best engineers and carbon craftsmen in the business, when our competitors outsource all their frames? Because if you build like everyone else, you'll end up with product like everyone else. And that's not good enough for us. Trek is out to build the world's best carbon fiber framesets — and that takes research, engineers, and carbon manufacturing all in the same place.

Our full facility gives us unique advantages in the carbon bike world:

PROCESS CONTROL. We can do things with carbon no one else would even attempt, because we control every aspect of the process. We can then document and pass on our knowledge to our worldwide facilities, so we can be certain every single Trek carbon frame is the best in its class.

INTEGRATION. Seamless integration of cables, electronics, and bearing interfaces requires intricate frame shaping and incredibly tight tolerances that just aren't possible without an in-house facility — which is why no one does integration better than Trek.

INNOVATION. We've perfected a long list of Trek-exclusive carbon innovations (our patented OCLV process, BB90, Net Molding, and StepJoint Technology, to name a few), all of which require extraordinary process control and consistency. When we transfer those innovations to our facilities worldwide, we bring unprecedented levels of technology to our entire line.

TESTING. Nobody tests like Trek. We install our own verification labs at each of our facilities worldwide, and run our own battery of frame tests — not just for safety and durability, but also for ride quality and performance. We run those tests as many times as it takes, like the 767 iterations of the Madone 5 Series frame we produced and tested before we were satisfied. You know what they say — 768th time's a charm.

MATERIALS ACCESS. Having a US production facility gives Trek exclusive access to export-restricted, aerospace-grade carbon materials, the most advanced available. Our USA-made frames are built with the world's best carbon, bar none.

That's the Trek carbon advantage.

- We've been doing carbon frames longer, pushing what is possible.
- We've built more than anyone else.
- We have the best facilities with the greatest control over the process.
- We have the most engineers (and of course, the most rocket scientists).

It all adds up to the best carbon bikes in the world, and it all starts here.

...37 carbon engineers,
including 11 Composite Materials Engineering specialists
and 9 bona fide rocket scientists...

/ RACE PERFORMANCE TWO SIDES OF THE FAST-AS-HELL COIN.

1: MADONE. Three-week Grand Tours are Madone's testing ground. And Madone aces the tests. Just look at all the yellow jerseys it has hanging on the wall. More comfortable, more responsive, better handling, and lighter — it's the right formula for elite Tour riders, and the right formula for you, no matter your size, shape, or ability.

/ ROAD / RACE PERFORMANCE

Madone 6 Series SSL
Madone 6 Series
Madone 5 Series
Madone 4 Series
Cronus
Ion

2: GARY FISHER COLLECTION. Cronus and Ion are what happen when Gary Fisher turns his innovative eye to the road. Our Gary Fisher Collection road bikes offer lightning-quick acceleration and razor-sharp handling thanks to super-stiff frames and our Fisher Control Column, while vanishing fender mounts and massive tire clearance give them real-world utility. Gary wouldn't have it any other way.







PROJECT ONE™

/ YOU DREAM IT. WE BUILD IT.

Don't settle for anyone else's bike. Create your very own with Project One, Trek's custom bike program. Customize, personalize, sensationalize — the choice is yours. Just select the model, paint scheme, and components you desire, and we'll build your dream bike.

It's a simple process with an amazing payoff. You can complete the first three steps at trekbikes.com/projectone or in person at your participating Trek dealer:

1



/ CHOOSE YOUR MODEL

All Madone 6 Series SSL and 6 Series bikes and all Speed Concept 9 Series models are customizable through Project One.

2



/ CHOOSE YOUR PAINT SCHEME

You have thousands of options, from striking simple schemes to bold custom solids to outrageously cool Signature Series schemes from the best artists in the business. You can even include your name or a personal message on the frame.

3



/ CHOOSE YOUR COMPONENTS

Drivetrain. Brakeset. Cable housing color. Wheelset. Tires. Stem. Saddle. Bars and bar tape. Spec every single detail, or select from a range of recommended combinations.

Now that you've got your perfect bike in mind, you'll need to visit your Trek dealer to be sized and fit to your selected model. Once you've been fitted, your dealer will place your order. And you'll be on your way to the bike of your dreams, courtesy of Trek.

/MADONE 6 SERIES SSL

THE HIGHEST-PERFORMANCE TREK EVER.

WHY 6 SERIES SSL? / Purely designed for performance. SSL's proprietary military-grade carbon creates the lightest, most responsive Trek ever.

RIDER PROFILE / The racer or rider who demands the highest level of cycling performance.

NEW FOR 2011 / New proprietary material for nearly 10% less weight than the award-winning 6 Series

Madone 6.9 SSL

FRAME OCLV2 SSL Carbon, E2, BB90, internal cable routing, DuoTrap compatible

FORK Bontrager Race XXX Lite, full carbon w/E2 asymmetrical steerer

WHEELS Bontrager XXX Lite, carbon

CRANK Shimano Dura-Ace, 53/39 (double) or 50/34 (compact)

REAR DERAILLEUR Shimano Dura-Ace

SIZES 50, 52, 54, 56, 58, 60, 62cm

COLOR Onyx Carbon/Silver/Platinum, or 3 additional no-upcharge Select Series colors, or a multitude of Signature Series upgrades

See trekbikes.com/projectone

LINEUP /

6.9 SSL

6.7 SSL

6.9 SSL WSD

6.7 SSL WSD

Project One Customizable

PROJECT ONE

H1 H2



1 / INCREDIBLY LIGHT

Super-stiff, super-strong proprietary HexSL carbon allows us to use less material for an unbelievably light fuselage.

2 / SUPERIOR TECHNOLOGY

Net Molding, StepJoint, BB90, E2 asymmetric fork, Advanced Cable Management, Load Path Design and DuoTrap.

3 / CLEANEST INTEGRATION

Elegant internal cable routing and DuoTrap offer best-in-class component and electronics integration.

4 / THE BEST CARBON

The pinnacle of OCLV2 technologies and materials. US-built with proprietary HexSL carbon fiber, StepJoint technology, and Net Molding.

PROJECTONE

H1 H2



Madone 6.7 SSL

FRAME OCLV2 SSL Carbon, E2, BB90, internal cable routing, DuoTrap compatible
FORK Bontrager Race XXX Lite, full carbon w/E2 asymmetrical steerer
WHEELS Bontrager Race X Lite
CRANK Shimano Dura-Ace, 53/39 (double) or 50/34 (compact)
REAR DERAILLEUR Shimano Dura-Ace
SIZES 50, 52, 54, 56, 58, 60, 62cm
COLOR Gloss White/Onyx/Red, or 3 additional no-upcharge Select Series colors, or a multitude of Signature Series upgrades
 See trekbikes.com/projectone

women's specific design.

PROJECTONE

H1 H2



Madone 6.9 SSL WSD

FRAME OCLV2 SSL Carbon, E2, BB90, internal cable routing, DuoTrap compatible
FORK Bontrager Race XXX Lite, full carbon w/E2 asymmetrical steerer
WHEELS Bontrager XXX Lite, carbon
CRANK Shimano Dura-Ace, 50/34
REAR DERAILLEUR Shimano Dura-Ace
SIZES 50, 52, 54, 56, 58, 60, 62cm
COLOR White/Dusty Blue, or 3 additional no-upcharge Select Series colors, or a multitude of Signature Series upgrades
 See trekbikes.com/projectone

women's specific design.

PROJECTONE

H1 H2



Madone 6.7 SSL WSD

FRAME OCLV2 SSL Carbon, E2, BB90, internal cable routing, DuoTrap compatible
FORK Bontrager Race XXX Lite, full carbon w/E2 asymmetrical steerer
WHEELS Bontrager Race X Lite
CRANK Shimano Dura-Ace, 50/34
REAR DERAILLEUR Shimano Dura-Ace
SIZES 50, 52, 54, 56, 58, 60, 62cm
COLOR Matte White, or 3 additional no-upcharge Select Series colors, or a multitude of Signature Series upgrades
 See trekbikes.com/projectone

/MADONE 6 SERIES

CHOOSE GREATNESS.

WHY 6 SERIES? / It has an unequalled performance pedigree: 9 of the last 11 Tour de France victories are in its DNA. Industry-leading technology, completely customizable, and hand built in the USA.

RIDER PROFILE / Wants all the qualities a pro-tour rider demands: precise steering, instant acceleration, long-ride comfort, hand-built quality, and personal customization.

NEW FOR 2011 / All new H3 Fit option and four new Select Series no-upcharge color options.

Madone 6.5

FRAME OCLV2 Red Carbon, E2, BB90, internal cable routing, DuoTrap compatible

FORK Bontrager Race XXX Lite, full carbon w/E2 asymmetrical steerer

WHEELS Bontrager Race X Lite

CRANK SRAM Force, 53/39 (double) or 50/34 (compact)

REAR DERAILLEUR SRAM Force

SIZES 47, 50, 52, 54, 56, 58, 60, 62, 62T, 64cm

COLOR Black/Carrera Blue/White/Silver, or 3 additional no-upcharge Select Series colors, or a multitude of Signature Series upgrades

See trekbikes.com/projectone

LINEUP /

Madone 6.5

Madone 6.2

Madone 6.5 WSD

Madone 6.2 WSD

Project One Customizable

PROJECT ONE

H1 H2 H3



1 / SUPERIOR TECHNOLOGY

Net Molding, StepJoint, BB90, E2 Asymmetric Fork, Advanced Cable Management, Load Path Design, and DuoTrap.

2 / SUPERIOR COMFORT

Ride Tuned seatmast is designed for the rigors of a 3-week Grand Tour.

3 / PERFECT PARTS, PERFECT FIT

Choose from H1, H2, and H3 Fit options to get the perfect position on the bike, and customize the spec with Project One.

4 / HAND BUILT

47 bike-loving craftsmen meticulously build each 6 Series bike out of our proprietary OCLV2 Carbon in our US manufacturing facility.

PROJECT ONE

H1 H2 H3



Madone 6.2

FRAME OCLV2 Red Carbon, E2, BB90, internal cable routing, DuoTrap compatible
FORK Bontrager Race XXX Lite, full carbon w/E2 asymmetrical steerer
WHEELS Bontrager Race Lite
CRANK Shimano Ultegra, 53/39 (double), 50/34 (compact) or 52/39/30 (triple)
REAR DERAILLEUR Shimano Ultegra
SIZES 47, 50, 52, 54, 56, 58, 60, 62, 62T, 64cm
COLOR Black/Yellow/White, or 3 additional no-upcharge Select Series colors, or a multitude of Signature Series upgrades
 See trekbikes.com/projectone

women's specific design.

PROJECT ONE

H1 H2 H3



Madone 6.5 WSD

FRAME OCLV2 Red Carbon, E2, BB90, internal cable routing, DuoTrap compatible
FORK Bontrager Race XXX Lite, full carbon w/E2 asymmetrical steerer
WHEELS Bontrager Race X Lite
CRANK SRAM Force, 53/39 (double) or 50/34 (compact)
REAR DERAILLEUR SRAM Force
SIZES 47, 50, 52, 54, 56, 58cm
COLOR Trek Black/White Shell, or 3 additional no-upcharge Select Series colors, or a multitude of Signature Series upgrades
 See trekbikes.com/projectone

women's specific design.

PROJECT ONE

H1 H2 H3



Madone 6.2 WSD

FRAME OCLV2 Red Carbon, E2, BB90, internal cable routing, DuoTrap compatible
FORK Bontrager Race XXX Lite, full carbon w/E2 asymmetrical steerer
WHEELS Bontrager Race Lite
CRANK Shimano Ultegra, 53/39 (double), 50/34 (compact) or 52/39/30 (triple)
REAR DERAILLEUR Shimano Ultegra
SIZES 47, 50, 52, 54, 56, 58cm
COLOR Rage Red, or 3 additional no-upcharge Select Series colors, or a multitude of Signature Series upgrades
 See trekbikes.com/projectone

/ MADONE 5 SERIES

THE BEST. FOR LESS.

WHY 5 SERIES? / It's true pro-level performance. The all-new 5 Series Madone offers the technologies of our flagship 6 Series on a meticulously engineered TCT Carbon frame.

RIDER PROFILE / The 5 Series rider wants it all: uncompromising performance, class-leading technology, affordable price.

NEW FOR 2011 / Everything. The 2011 5 Series is a complete redesign that includes technologies from the top-of-the-line 6 Series.

Madone 5.9

FRAME 5 Series TCT Carbon, E2, BB90, internal cable routing, DuoTrap compatible

FORK Bontrager Race X Lite w/E2 aluminum steerer, carbon crown and legs

WHEELS Bontrager Race Lite

CRANK Shimano Dura-Ace, 50/34

REAR DERAILLEUR Shimano Dura-Ace

SIZES 50, 52, 54, 56, 58, 60, 62, 64cm

COLOR Gloss White/Placid Blue/Black

LINEUP /

Madone 5.9

Madone 5.5

Madone 5.2

Madone 5.1

Madone 5.5 WSD

Madone 5.2 WSD

H2



1 / MORE COMFORT

Reshaped Ride Tuned seatmast removes 30 grams from the fuselage and adds 43% more vertical compliance.

2 / BETTER PERFORMANCE

Redesigned E2 fork, refined carbon layup, and an updated frame shape provide flawless cornering and instant acceleration.

3 / CLEANER INTEGRATION

The cleanest aesthetic on the market, featuring Advanced Cable Management, Di2 integration capacity, integrated DuoTrap electronics, and BB90 press fit bearings.

4 / BETTER FIT

Our most popular 5.2 model has the broadest range of fit options available in the industry.

H2



Madone 5.5

FRAME 5 Series TCT Carbon, E2, BB90, internal cable routing, DuoTrap compatible

FORK Bontrager Race X Lite w/E2 aluminum steerer, carbon crown and legs

WHEELS Bontrager Race Lite

CRANK SRAM Force, 50/34

REAR DERAILLEUR SRAM Force

SIZES 50, 52, 54, 56, 58, 60, 62cm

COLOR Platinum/Crystal Pearl White/Silver

H2 H3



Madone 5.2

FRAME 5 Series TCT Carbon, E2, BB90, internal cable routing, DuoTrap compatible

FORK Bontrager Race X Lite w/E2 aluminum steerer, carbon crown and legs

WHEELS Bontrager Race

CRANK Shimano Ultegra, 50/34 (double) or 52/39/30 (triple)

REAR DERAILLEUR Shimano Ultegra

SIZES 50, 52, 54, 56, 58, 60, 62, 64cm

COLOR Black/Platinum/White

H2 H3



Madone 5.2

COLOR OPTION Trek Red/Onyx Carbon/White

H2



Madone 5.1

FRAME 5 Series TCT Carbon, E2, BB90, internal cable routing, DuoTrap compatible

FORK Bontrager Race X Lite w/E2 aluminum steerer, carbon crown and legs

WHEELS Bontrager Race

CRANK SRAM Rival, 50/34

REAR DERAILLEUR SRAM Rival

SIZES 50, 52, 54, 56, 58, 60, 62cm

COLOR Gloss White/Candy Orange/Black

women's specific design

H3



Madone 5.5 WSD

FRAME 5 Series TCT Carbon, E2, BB90, internal cable routing, DuoTrap compatible

FORK Bontrager Race X Lite w/E2 aluminum steerer, carbon crown and legs

WHEELS Bontrager Race Lite

CRANK SRAM Force, 50/34

REAR DERAILLEUR SRAM Force

SIZES 47, 50, 52, 54, 56, 58cm

COLOR Satin Lava Black/
Satin Titanite Black/True Blue

women's specific design

H3



Madone 5.2 WSD

FRAME 5 Series TCT Carbon, E2, BB90, internal cable routing, DuoTrap compatible

FORK Bontrager Race X Lite w/E2 aluminum steerer, carbon crown and legs

WHEELS Bontrager Race

CRANK Shimano Ultegra, 50/34 (double) or 52/39/30 (triple)

REAR DERAILLEUR Shimano Ultegra

SIZES 47, 50, 52, 54, 56cm

COLOR Crystal Pearl White/Charcoal/Black

/ MADONE 4 SERIES

RACE-READY CARBON.

WHY MADONE 4 SERIES? / It's Trek's best selling Madone. Race-level performance with all-day comfort.

RIDER PROFILE / The 4 Series rider values performance and demands value.

NEW FOR 2011 / Updated specifications. Shimano 105 5700 group.

Madone 4.7

FRAME 4 Series TCT Carbon, E2, DuoTrap compatible

FORK Bontrager Race Lite w/E2 aluminum steerer, carbon legs

WHEELS Bontrager Race

CRANK Shimano 105, 50/34

REAR DERAILLEUR Shimano 105

SIZES 50, 52, 54, 56, 58, 60, 62cm

COLOR White/Black/Chi Red

LINEUP /

Madone 4.7

Madone 4.5

Madone 4.7 WSD

Madone 4.5 WSD

H2



1 / COMFORT AND CONTROL

Built with the proven H2 Fit and Madone Tour-winning geometry, 4 Series is confident in any condition.

2 / TECHNOLOGY DRIVEN

E2 tapered headtube system and unparalleled TCT engineering give the 4 Series an incredibly refined and responsive ride.

3 / BETTER HANDLING

Bontrager E2 fork increases the lower headset bearing to a wider 1.5" diameter to smooth out and stiffen the bike under steering load.

4 / INTEGRATED ELECTRONICS

DuoTrap computer offers the most elegant bicycle electronics solution available.

H2



Madone 4.5

FRAME 4 Series TCT Carbon, E2, DuoTrap compatible
FORK Bontrager Race Lite w/E2 aluminum steerer, carbon legs
WHEELS Bontrager SSR
CRANK Shimano R600, 50/34 (double) or Shimano R-553, 50/39/30 (triple)
REAR DERAILLEUR Shimano 105
SIZES 50, 52, 54, 56, 58, 60, 62cm
COLOR Matte Black/White/Carrera Blue

women's specific design



Madone 4.7 WSD

FRAME 4 Series TCT Carbon, E2, DuoTrap compatible
FORK Bontrager Race Lite w/E2 aluminum steerer, carbon legs
WHEELS Bontrager Race
CRANK Shimano 105, 50/34
REAR DERAILLEUR Shimano 105
SIZES 43, 47, 50, 52, 54, 56, 58cm
COLOR Dark Periwinkle/Light Periwinkle/White

women's specific design



Madone 4.5 WSD

FRAME 4 Series TCT Carbon, E2, DuoTrap compatible
FORK Bontrager Race Lite w/E2 aluminum steerer, carbon legs
WHEELS Bontrager SSR
CRANK Shimano R600, 50/34 (double) or Shimano R-553, 50/39/30 (triple)
REAR DERAILLEUR Shimano 105
SIZES 47, 50, 52, 54, 56, 58cm
COLOR White Shell/Gold/Coastal Blue

/ CRONUS

SMARTLY DIFFERENT.



GARY'S TAKE / I wanted a race bike that handled better than anything out there and introduced some additional utility. I was after an elegant solution, without compromise, that would speak to every self-supported roadie out there.

RIDER PROFILE / Cronus is perfect for the rider looking for a bike to train Monday-Friday and race on Saturday. Uncompromising performance with additional utility for the real world.

NEW FOR 2011 / Bontrager Anatomic-C handlebar, more competitive price point for the Cronus Ultimate, addition of two WSD models.

Cronus Ultimate

FRAME Monocoque carbon frame, E2 integrated headset, BB90 integrated bottom bracket, hidden fender mounts

FORK Bontrager carbon FCC, carbon E2 1-1/8" - 1.5" steerer, wide stance carbon legs, accepts 25mm hub endcaps w/integrated SpeedTrap computer mount

WHEELS Bontrager Race X Lite FCC, wider and taller flanges, 25mm endcaps, outboard J-bend spokes

CRANK SRAM Force, 50/34

REAR DERAILLEUR SRAM Red

SIZES 50, 52, 54, 56, 58, 61cm

COLOR Satin Dark Gray/Titanite Black



LINEUP /

Cronus Ultimate

Cronus Pro

Cronus

Cronus Pro WSD

Cronus WSD

1 / FCC

Fisher Control Column means the entire steering column has been reengineered to create the stiffest, most confidence-inspiring handling of any road bike.

2 / RACE UTILITY

Vanishing fender mounts and massive tire clearance allow for full-coverage fenders so you can ride comfortably and quickly in less-than-ideal conditions.

3 / MONOCOQUE

CARBON FRAME
The 900 gram frame climbs like a champ, and the robust downtube and chainstays let you sprint for the win.

4 / ENDURANCE FIT

A taller head tube fits a broad range of riders more comfortably — and a more comfortable rider is a stronger rider.



Cronus Pro

FRAME Monocoque carbon frame, E2 integrated headset, BB90 integrated bottom bracket, hidden fender mounts

FORK Bontrager carbon FCC, carbon E2 1-1/8" - 1.5" steerer, wide stance carbon legs, accepts 25mm hub endcaps, integrated SpeedTrap computer mount

WHEELS Bontrager Race Lite FCC, wider and taller flanges, 25mm endcaps, outboard J-bend spokes

CRANK Shimano Ultegra, 50/34

REAR DERAILLEUR Shimano Ultegra

SIZES 50, 52, 54, 56, 58, 61cm

COLOR Satin Dark Gray/Titanite Black/Crystal Pearl White



Cronus

FRAME Monocoque carbon frame, E2 integrated headset, BB90 integrated bottom bracket, hidden fender mounts

FORK Bontrager carbon FCC, carbon E2 1-1/8" - 1.5" steerer, wide stance carbon legs, accepts 25mm hub endcaps, integrated SpeedTrap computer mount

WHEELS Bontrager Race FCC, wider and taller flanges, 25mm endcaps, outboard J-bend spokes

CRANK Shimano FR600 Compact, 34/50

REAR DERAILLEUR Shimano 105

SIZES 50, 52, 54, 56, 58, 61cm

COLOR Satin Titanite Black/Crystal Pearl White



Cronus Pro WSD

FRAME Monocoque carbon frame, E2 integrated headset, BB90 integrated bottom bracket, hidden fender mounts

FORK Bontrager carbon FCC, carbon E2 1-1/8" - 1.5" steerer, wide stance carbon legs, accepts 25mm hub endcaps, integrated SpeedTrap computer mount

WHEELS Bontrager Race Lite FCC, wider and taller flanges, 25mm endcaps, outboard J-bend spokes

CRANK Shimano Ultegra, 50/34

REAR DERAILLEUR Shimano Ultegra

SIZES 45, 47, 50, 52, 54cm

COLOR Satin Titanite Black/Crystal Pearl White



Cronus WSD

FRAME Monocoque carbon frame, E2 integrated headset, BB90 integrated bottom bracket, hidden fender mounts

FORK Bontrager carbon FCC, carbon E2 1-1/8" - 1.5" steerer, wide stance carbon legs, accepts 25mm hub endcaps, integrated SpeedTrap computer mount

WHEELS Bontrager Race FCC, wider and taller flanges, 25mm endcaps, outboard J-bend spokes

CRANK Shimano FR600 Compact, 50/34

REAR DERAILLEUR Shimano 105

SIZES 45, 47, 50, 52, 54cm

COLOR Satin Crystal Pearl White/Dark Gray/Titanite Black

/ION

THE ULTIMATE CARBON/ALUMINUM RACE PACKAGE.

GARY'S TAKE / I set out to prove that a mixed aluminum/carbon bike doesn't have to be a compromise. Done! Ion offers all the features of its carbon counterpart, with even greater stiffness for better acceleration and handling in demanding conditions.

RIDER PROFILE / The Ion is for the crit racer or punishing roadie looking for the absolute best in acceleration and handling.

NEW FOR 2011 / Bontrager Anatomic-C handlebar.

Ion Pro

FRAME 6061 T6 aluminum main frame, carbon seatstays & chainstays, E2 integrated head tube, BB86 integrated bottom bracket

FORK Bontrager carbon FCC, carbon E2 1-1/8" - 1.5" steerer, wide stance carbon legs, accepts 25mm hub endcaps, integrated SpeedTrap computer mount

WHEELS Bontrager Race FCC, wider and taller flanges, 25mm endcaps, outboard J-bend spokes

CRANK Shimano FR600, 50/34

REAR DERAILLEUR Shimano 105

SIZES 50, 52, 54, 56, 58, 61cm

COLOR Satin Crystal Pearl White/Signature Blue/Titanite Black



LINEUP /

Ion Pro

Ion Super

Ion Pro WSD

Ion Super WSD

1 / FCC

Fisher Control Column means the entire steering column has been reengineered to create the stiffest, most confidence inspiring-handling of any road bike.

2 / EXCEPTIONAL STIFFNESS

Robust, heavily formed aluminum main triangle for front-end stiffness + stout carbon chainstays/seatstays for rear-end stiffness = exceptional response and acceleration.

3 / RACE UTILITY

Vanishing fender mounts and massive tire clearance allow for full-coverage fenders so you can ride comfortably and quickly in less-than-ideal conditions.

4 / RXL CARBON FORK

RXL-level full-carbon fork (carbon legs, carbon steerer) gives you the best in front-end handling and light weight.



Ion Super

FRAME 6061 T6 aluminum main frame, carbon seatstays & chainstays, E2 integrated head tube, BB86 integrated bottom bracket

FORK Bontrager carbon FCC, carbon E2 1-1/8" - 1.5" steerer, wide stance carbon legs, accepts 25mm hub endcaps, integrated SpeedTrap computer mount

WHEELS Bontrager SSR

CRANK FSA Gossamer MegaExo, 50/34

REAR DERAILLEUR Shimano Tiagra

SIZES 50, 52, 54, 56, 58, 61cm

COLOR Satin Dark Gray/Titanite Black

women's specific design.



Ion Pro WSD

FRAME 6061 T6 aluminum main frame, carbon seatstays & chainstays, E2 integrated head tube, BB86 integrated bottom bracket

FORK Bontrager carbon FCC, carbon E2 1-1/8" - 1.5" steerer, wide stance carbon legs, accepts 25mm hub endcaps, integrated SpeedTrap computer mount

WHEELS Bontrager Race FCC, wider and taller flanges, 25mm endcaps, outboard J-bend spokes

CRANK Shimano FR600, 50/34

REAR DERAILLEUR Shimano 105

SIZES 45, 47, 50, 52, 54cm

COLOR Satin Dark Gray/Crystal Pearl White/Titanite Black

women's specific design.



Ion Super WSD

FRAME 6061 T6 aluminum main frame, carbon seatstays & chainstays, E2 integrated head tube, BB86 integrated bottom bracket

FORK Bontrager carbon FCC, carbon E2 1-1/8" - 1.5" steerer, wide stance carbon legs, accepts 25mm hub endcaps, integrated SpeedTrap computer mount

WHEELS Bontrager SSR

CRANK FSA Gossamer MegaExo, 50/39/30

REAR DERAILLEUR Shimano Tiagra

SIZES 45, 47, 50, 52, 54cm

COLOR Satin Titanite Black/Vintage Gray/Crystal Pearl White

/ MADONE 3 SERIES

WORLD-CLASS CARBON PERFORMANCE STARTS HERE.

WHY MADONE 3 SERIES? / The all new Madone 3 Series brings all the handling, performance, and style that is the essence of Madone, and concentrates it into our greatest value yet.

RIDER PROFILE / Discriminating sport-level rider who wants to squeeze every ounce of performance out of his/her budget.

NEW FOR 2011 / Everything. The all new Madone 3 Series condenses the rocketship styling and the confidence-inspiring geometry of our flagship 6 Series Madone into an astonishing value package.

Madone 3.1

FRAME 3 Series TCT Carbon
FORK Bontrager Race, carbon legs, SpeedTrap compatible
WHEELS Alloy hubs; Bontrager Approved alloy rims
CRANK SRAM Apex, 50/34
REAR DERAILLEUR Shimano 105
SIZES 50, 52, 54, 56, 58, 60, 62cm
COLOR Gloss Black/White/Chi Red

LINEUP /

Madone 3.1
Madone 3.1 WSD

H2



1 / GEOMETRY OF CHAMPIONS

At the heart of every Madone lives the intuitive responsiveness of Trek's Tour-winning performance design.

2 / HAND-BUILT TCT FRAME

Thirty-seven engineers designed, developed, and demanded the best materials and processes that go into every 3 Series frame.

3 / WEATHER PROTECTION

Every frame is fashioned with fender mounts so you can ride all year long.

4 / CARRYING CAPACITY

Going for a long ride? Rack mounts make carrying accessories a breeze.

women's specific design

H2



Madone 3.1 WSD

FRAME 3 Series TCT Carbon
FORK Bontrager Race, carbon legs, SpeedTrap compatible
WHEELS Alloy hubs; Bontrager Approved alloy rims

CRANK SRAM Apex, 50/34
REAR DERAILLEUR Shimano 105
SIZES 47, 50, 52, 54, 56, 58cm
COLOR Gloss Gray Metallic/White/Mint Pearl



/2/1 SERIES

LIKE LANCE'S BIKE, IN ALUMINUM.

WHY 2/1 SERIES? / Strong, light, and exhilarating without weighing down your budget, our 2 and 1 Series bikes are designed with the same meticulous attention to detail as our award-winning Madone.

RIDER PROFILE / Passionate enthusiast or aluminum aficionado who seeks a Tour-tested, confident, comfortable ride.

NEW FOR 2011 / Introducing a new H3 Fit option, an updated and improved WSD fit, and a sporty new graphics package.

2.3

FRAME Alpha Black Aluminum

FORK Bontrager Race, carbon legs, SpeedTrap compatible

WHEELS Bontrager Race

CRANK Shimano 105, 50/34 (double) or 50/39/30 (triple)

REAR DERAILLEUR Shimano 105

SIZES 50, 52, 54, 56, 58, 60, 62, 64cm

COLOR Gloss Platinum/Black/Silver

LINEUP /

2.3

2.1

1.5

1.2

1.1



1 / GEOMETRY OF CHAMPIONS

At the heart of every Trek road bike lives the intuitive responsiveness of Trek's Tour-winning performance design.

2 / WEATHER WORTHY

Every frame has smart details like low-profile fender mounts so you can ride all year long.

3 / THE BEST ALUMINUM

Trek's performance-engineered Alpha Black and Alpha White Aluminum is shaped and tuned for ultimate steering performance and ride comfort.

4 / INCREDIBLE VALUE

2 and 1 Series range offers the best value specification in the industry for long-lasting performance.

2.1

FRAME Alpha Black Aluminum
FORK Bontrager Race, carbon legs, SpeedTrap compatible
WHEELS Bontrager SSR
CRANK Shimano R600, 50/34 (double) or Shimano R-553, 50/39/30 (triple)
REAR DERAILLEUR Shimano 105
SIZES 47, 50, 52, 54, 56, 58, 60, 62cm
COLOR Gloss Platinum/White/Carrera Blue



2.1

COLOR OPTION Trek Red/Black/White



1.5

FRAME Alpha White Aluminum
FORK Bontrager Approved, carbon legs
WHEELS Alloy hubs; Bontrager Approved alloy rims
CRANK FSA Vero, 50/34 (double) or 50/39/30 (triple)
REAR DERAILLEUR Shimano Tiagra
SIZES 50, 52, 54, 56, 58, 60, 62, 64cm
COLOR Matte Black/Platinum/Silver



1.2

FRAME Alpha White Aluminum
FORK Bontrager Approved, carbon legs
WHEELS Alloy hubs; Bontrager Approved alloy rims
CRANK FSA Vero, 50/34 (double) or 50/39/30 (triple)
REAR DERAILLEUR Shimano Tiagra
SIZES 43, 50, 52, 54, 56, 58, 60, 62cm
COLOR Crystal Pearl White/Black/Carrera Blue

1.1

FRAME Alpha White Aluminum
FORK Aluminum
WHEELS Alloy hubs; Bontrager Approved alloy rims
CRANK FSA Tempo, 50/34
REAR DERAILLEUR Shimano 2300
SIZES 47, 50, 52, 54, 56, 58, 60, 62cm
COLOR Gloss Black/White/Metallic Red

/ LEXA

DESIGNED TO FIT BETTER FROM THE START.

WHY LEXA? / It's a world-class, lightweight, performance road bike with a confidence-inspiring demeanor, and all the contact points are chosen with women in mind.

RIDER PROFILE / The Lexa rider will appreciate the predictable, stable, comfortable handling of a bike that's designed to fit women right from from the start.

NEW FOR 2011 / Everything! Lexa is an all-new women's road platform.

Lexa SLX

FRAME Alpha Black Aluminum
FORK Bontrager Race, carbon legs, SpeedTrap compatible
WHEELS Bontrager SSR (43cm: 650c)
CRANK Shimano R600, 50/34 (double) or Shimano R-553, 50/39/30 (triple)
REAR DERAILLEUR Shimano 105
SIZES 43, 47, 50, 52, 54, 56, 58cm
COLOR Crystal Pearl White/Black/True Blue

women's specific design.



LINEUP /

Lexa SLX
Lexa SL
Lexa S
Lexa

1 / GEOMETRY OF CHAMPIONS

At the heart of every Lexa road bike is a geometry that is fast yet stable and confidence inspiring.

2 / WEATHER WORTHY

Every frame has smart details like low-profile fender mounts so you can ride all year long.

3 / THE BEST ALUMINUM

Trek's performance-engineered Alpha Black and Alpha White Aluminum is shaped and tuned for ultimate steering performance and ride comfort.

4 / WSD PLATFORM

Better fit = better performance, and this WSD platform is designed from the ground up to fit women better.

women's specific design.



Lexa SLX

COLOR OPTION Satin Crystal Pearl White/
Sparkling Silver/Platinum

women's specific design



Lexa SL

FRAME Alpha White Aluminum**FORK** Bontrager Approved, carbon legs**WHEELS** Alloy hubs; Bontrager Approved alloy rims**CRANK** FSA Vero, 50/34 (double) or 50/39/30 (triple)**REAR DERAILLEUR** Shimano Tiagra**SIZES** 47, 50, 52, 54, 56cm**COLOR** Satin White Shell/ Dark Charcoal/Gold

women's specific design



Lexa SL

COLOR OPTION Gloss Rage Red/ White Shell/Black

women's specific design



Lexa S

FRAME Alpha White Aluminum**FORK** Bontrager Approved, carbon legs**WHEELS** Alloy hubs; Bontrager Approved alloy rims**CRANK** FSA Vero, 50/34 (double) or 50/39/30 (triple)**REAR DERAILLEUR** Shimano Tiagra**SIZES** 47, 50, 52, 54, 56cm**COLOR** Satin Earl Gray/Minty Fresh/ Crystal Pearl White

women's specific design



Lexa S

COLOR OPTION Gloss Titanite Black/Crystal Pearl White/True Blue

women's specific design



Lexa

FRAME Alpha White Aluminum**FORK** Aluminum**WHEELS** Alloy hubs; Bontrager Approved alloy rims**CRANK** FSA Tempo, 50/34**REAR DERAILLEUR** Shimano 2300**SIZES** 47, 50, 52, 54, 56cm**COLOR** Gloss White Shell/Black/Rage Red

women's specific design



Lexa

COLOR OPTION Gloss Coastal Blue/Crystal Pearl White/Gray Metallic

/ TRIATHLON

THE FASTEST WAY TO THE FINISH.

Speed Concept is the fastest triathlon bike on the planet. Its revolutionary design pairs a groundbreaking aero shape with the cleanest integration of brakes, cables, and electronics ever seen on a bicycle. Speed Concept takes all that we've learned in the wind tunnel and lets you apply it to the road. Speed is here.

/ ROAD / TRIATHLON

Speed Concept 9 Series

Speed Concept 7 Series

Speed Concept 2 Series



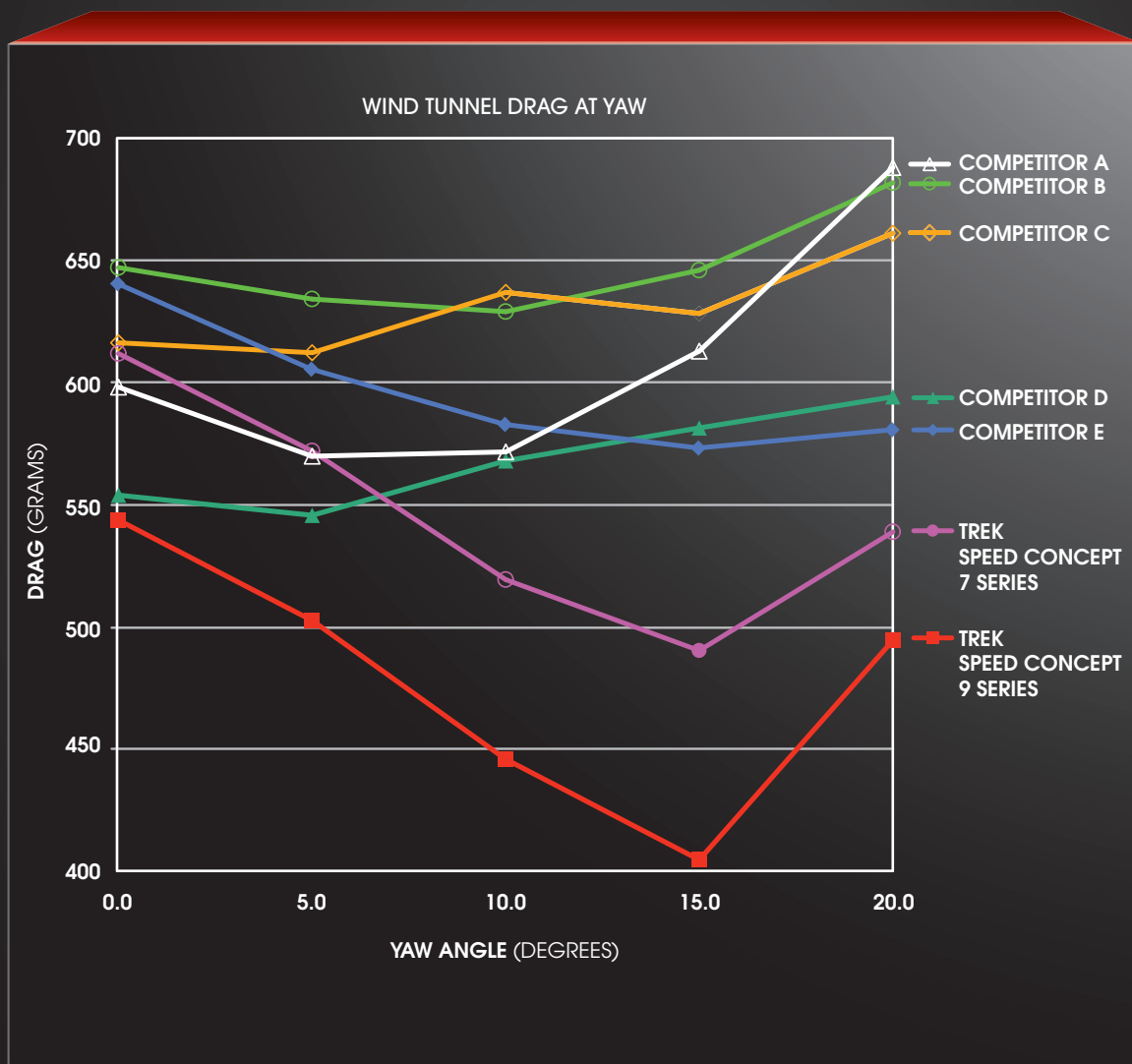


TESTED FROM EVERY ANGLE

MORE SPEED THROUGH BETTER DESIGN.

Yaw is the measure of crosswind angle, but since wind is very seldom directly head-on, yaw is a critical but often overlooked factor in bicycle aerodynamics.

So Trek engineers measured average yaw over several of the biggest Ironman courses to determine the most prevalent crosswind conditions. We then applied those crosswind variables to extensive wind-tunnel testing of Speed Concept and all our major competitors. The results speak for themselves.



* For detailed technical information on the Speed Concept, visit www.trekbikes.com for the whitepaper.

/ SLEEK INTEGRATION

THE LESS THE WIND SEES, THE BETTER.

Speed Concept isn't just an aerodynamic frame, it's an aerodynamic system. Cables, brake calipers, computers, zip ties, flat repair equipment, athlete fuel, skewers — these can all create drag and slow you down. But not on Speed Concept. We integrated every possible variable into the frameset, hiding them from the wind to create the most aerodynamic bicycle ever, even when it's fully loaded for 112 miles.



/ SPEED STORAGE

Bontrager Speed Storage products are so well fitted to the Speed Concept frame that the bike is actually more aerodynamic with them than without. Take your tools, flat fixes, and fuels with you, and go even faster.



/ INVISIBLE BRAKES

Speed Concept 9 Series is the first bike with front and rear brakes actually built into the fuselage. This innovative setup results in less drag and cleaner lines — a faster, sleeker, better solution.



/ HIDDEN CABLES

You can look for the brake and shift cables, but you won't see them — and neither will the wind. Cables contribute a massive amount of drag, and routing them internally through the bars and frame eliminates that drag and maximizes speed.



/ INTERNAL ELECTRONICS

Computer sensors create unwanted dirty air — but not if you build them seamlessly right into the frame. Speed Concept is the first tri bike to integrate electronics into its aerodynamic shape. Out of sight, out of the wind.



/ SPEED IS IN THE DETAILS

Even the quick-release skewers on the Speed Concept increase its speed. We integrate them into the shape of the bike for faster aerodynamics.

/ SPEED CONCEPT 9 SERIES

THE FASTEST WAY TO THE FINISH.

WHY SPEED CONCEPT 9 SERIES? / It's the fastest triathlon bike on the planet. Its revolutionary design pairs a groundbreaking aero shape with the cleanest integration of brakes, cables, and electronics ever seen on a bicycle.

RIDER PROFILE / Are you a speed freak? The 9 Series is our top-of-the-line bike for those who put speed above all else.

NEW FOR 2011 / Everything. This is a revolutionary new tri bike in every category of bicycle design.

Speed Concept 9.9

FRAME OCLV2 Carbon, KVF (Kammtail Virtual Foil) tube design, SC Speed Box and DuoTrap compatible, includes SC Draft Box

FORK Bontrager SC, OCLV2 Carbon, KVF leg design, integrated brake and stem

WHEELS Bontrager Aeolus 6.5, carbon

CRANK SRAM Red, 53/39

REAR DERAILLEUR SRAM Red

SIZES SM, MD, LG, XL

COLOR Gloss Black/Pearl White/Gloss Silver, or 4 additional no-upcharge Select Series colors, or a multitude of Signature Series upgrades

See trekbikes.com/projectone

LINEUP /

Speed Concept 9.9

Speed Concept 9.8

Speed Concept 9.5

Speed Concept 9.8 WSD

Speed Concept 9.5 WSD

PROJECTONE™



1 / KVF TUBE SHAPE

Kammtail Virtual Foil. It's the most aerodynamic tube shape ever designed for a bicycle.

2 / HIDDEN FROM THE WIND

Integrated front and rear brakes, internal frame routing, optional integrated DuoTrap electronics, and integrated storage dramatically decrease drag and save time.

3 / UNMATCHED

ADJUSTABILITY

Speed Concept 9 Series has the largest range of adjustability of any elite tri bike.

4 / WIND-TUNNEL PROVEN

We've tested every major competitor in the wind tunnel, and Speed Concept is the fastest. Period.

PROJECT ONE



Speed Concept 9.8

FRAME OCLV2 Carbon, KVF (Kammtail Virtual Foil) tube design, SC Speed Box and DuoTrap compatible, includes SC Draft Box

FORK Bontrager SC, OCLV2 Carbon, KVF leg design, integrated brake and stem

WHEELS Bontrager Aeolus 5.0 ACC (XS: 650c HED Jet 60)

CRANK SRAM Force, 53/39 (XS: Rival, 53/39)

REAR DERAILLEUR SRAM Force

SIZES XS, SM, MD, LG, XL

COLOR Gloss Black/Trans Pearl/Onyx Carbon, or 4 additional no-upcharge Select Series colors, or a multitude of Signature Series upgrades

See trekbikes.com/projectone

PROJECT ONE



Speed Concept 9.5

FRAME OCLV2 Carbon, KVF (Kammtail Virtual Foil) tube design, SC Speed Box and DuoTrap compatible, includes SC Draft Box

FORK Bontrager SC, OCLV2 Carbon, KVF leg design, integrated brake and stem

WHEELS Bontrager Race Lite (XS: 650c Xero XR-200)

CRANK Shimano Ultegra, 53/39 (double) or 50/34 (compact)

REAR DERAILLEUR Shimano Ultegra

SIZES XS, SM, MD, LG, XL

COLOR Gloss Black/Catalyst Green/Pearl White, or 4 additional no-upcharge Select Series colors, or a multitude of Signature Series upgrades

See trekbikes.com/projectone

women's specific design

PROJECT ONE



Speed Concept 9.8 WSD

FRAME OCLV2 Carbon, KVF (Kammtail Virtual Foil) tube design, SC Speed Box and DuoTrap compatible, includes SC Draft Box

FORK Bontrager SC, OCLV2 Carbon, KVF leg design, integrated brake and stem

WHEELS Bontrager Aeolus 5.0 ACC (XS: 650c HED Jet 60)

CRANK SRAM Force, 53/39 (XS: Rival, 53/39)

REAR DERAILLEUR SRAM Force

SIZES XS, SM, MD

COLOR Chi Red, or 4 additional no-upcharge Select Series colors, or a multitude of Signature Series upgrades

See trekbikes.com/projectone

women's specific design

PROJECT ONE



Speed Concept 9.5 WSD

FRAME OCLV2 Carbon, KVF (Kammtail Virtual Foil) tube design, SC Speed Box and DuoTrap compatible, includes SC Draft Box

FORK Bontrager SC, OCLV2 Carbon, KVF leg design, integrated brake and stem

WHEELS Bontrager Race X Lite Aero (XS: 650c Formula XR-200)

CRANK Shimano Ultegra, 53/39 (double) or 50/34 (compact)

REAR DERAILLEUR Shimano Ultegra

SIZES XS, SM, MD

COLOR Placid Blue, or 4 additional no-upcharge Select Series colors, or a multitude of Signature Series upgrades

See trekbikes.com/projectone

/ SPEED CONCEPT 7 & 2 SERIES

SUPERIOR AERODYNAMICS. SERIOUS VALUE.

WHY SPEED CONCEPT 7 & 2 SERIES?

Ultra high performance, outstanding value. Features revolutionary KVF aerodynamic tube shape in TCT Carbon and aluminum frame options.

RIDER PROFILE / Specifically designed for the serious or advancing triathlete who is looking for the world's most advanced aero technology, stability, and value all in one bike.

NEW FOR 2011 / Everything. These are revolutionary new tri bikes in every category of design.

Speed Concept 7.5

FRAME TCT Carbon, KVF (Kammtail Virtual Foil) tube design, DuoTrap and SC Draft Box/SC Speed Box compatible

FORK Bontrager Race Lite E2 Tri Speed Concept, carbon

WHEELS Bontrager Race Lite (XS: 650c Xero XR-200)

CRANK Shimano Ultegra, 53/39

REAR DERAILLEUR Shimano Ultegra

SIZES XS, SM, MD, LG, XL

COLOR Carrera Blue/White

LINEUP /

Speed Concept 7.5

Speed Concept 7.2

Speed Concept 7.0

Speed Concept 7.0 WSD

Speed Concept 2.5

Speed Concept 2.5 WSD



1 / KVF TUBE SHAPE

Kammtail Virtual Foil. It's the most aerodynamic tube shape ever designed for a bicycle.

2 / HIDDEN FROM THE WIND

Hidden rear brakes, internal cable routing, optional integrated electronics, and optional integrated storage dramatically decrease drag and save time.

3 / WIND-TUNNEL PROVEN

Without question, wind tunnel tests have proven Speed Concept models to be the fastest designs available for the money.

4 / ULTIMATE STABILITY

Tri-specific geometry provides ultra-stable handling when you're in the aero bars.

Speed Concept 7.2

FRAME TCT Carbon, KVF (Kammtail Virtual Foil) tube design, DuoTrap and SC Draft Box/SC Speed Box compatible

FORK Bontrager Race Lite E2 Tri Speed Concept, carbon

WHEELS Bontrager Race

CRANK SRAM Rival, 50/34

REAR DERAILLEUR SRAM Rival

SIZES SM, MD, LG, XL

COLOR Gloss White/Platinum



Speed Concept 7.0

FRAME TCT Carbon, KVF (Kammtail Virtual Foil) tube design, DuoTrap and SC Draft Box/SC Speed Box compatible

FORK Bontrager Race Lite E2 Tri Speed Concept, carbon

WHEELS Bontrager SSR

CRANK SRAM Apex, 50/34

REAR DERAILLEUR SRAM Apex

SIZES SM, MD, LG, XL

COLOR Charcoal/Gloss Black

women's specific design



Speed Concept 7.0 WSD

FRAME TCT Carbon, KVF (Kammtail Virtual Foil) tube design, DuoTrap and SC Draft Box/SC Speed Box compatible

FORK Bontrager Race Lite E2 Tri Speed Concept, carbon

WHEELS Bontrager SSR (XS: 650c)

CRANK SRAM Apex, 50/34

REAR DERAILLEUR SRAM Apex

SIZES XS, SM, MD

COLOR Gloss White/Black

women's specific design



Speed Concept 2.5

FRAME Alpha Red Aluminum, KVF (Kammtail Virtual Foil) tube design, SC Speed Box and Bento Box compatible

FORK Bontrager Race Lite E2 Tri Speed Concept, carbon, SpeedTrap compatible

WHEELS Bontrager SSR (XS: 650c)

CRANK SRAM Apex, 50/34

REAR DERAILLEUR SRAM Apex

SIZES XS, SM, MD, LG, XL

COLOR Bright Silver/Black



Speed Concept 2.5 WSD

FRAME Alpha Red Aluminum, KVF (Kammtail Virtual Foil) tube design, SC Speed Box and Bento Box compatible

FORK Bontrager Race Lite E2 Tri Speed Concept, carbon, SpeedTrap compatible

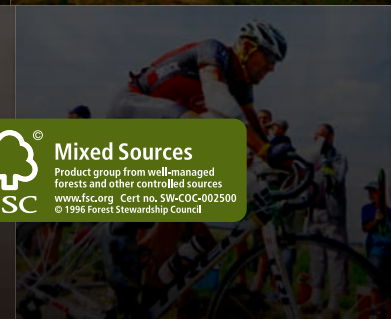
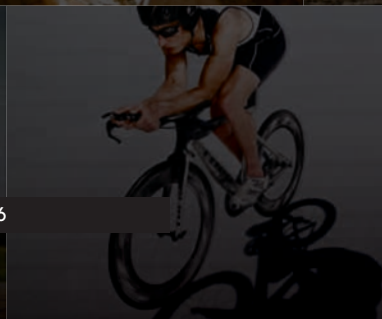
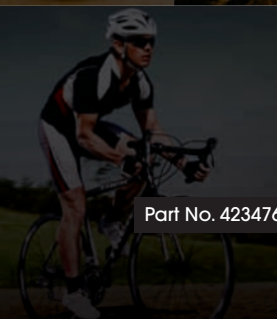
WHEELS Bontrager SSR

CRANK SRAM Apex, 50/34

REAR DERAILLEUR SRAM Apex

SIZES XS, SM, MD

COLOR Satin White/Aluminum



Part No. 423476

TREK

 **Mixed Sources**
Product group from well-managed
forests and other controlled sources
www.fsc.org Cert no. SW-COC-002500
© 1996 Forest Stewardship Council