

# TruAbutment Digital Solutions

## Angled Screw Channel (ASC)



**TruAbutment Inc.**  
17742 Cowan  
Irvine, CA 92614

info@truabutment.com  
T: 714.956.1488 | F: 714.956.1491  
truabutment.com

## A New Service That Everyone Asked for — **TruAbutment DS ASC**

Place the screw access channel anywhere on the bridge and hybrid restorations and depend on TruAbutment to produce the abutments with the most precise fit using the latest milling strategy on Swiss-turning CNC machines.

### **Place the screw access channel**

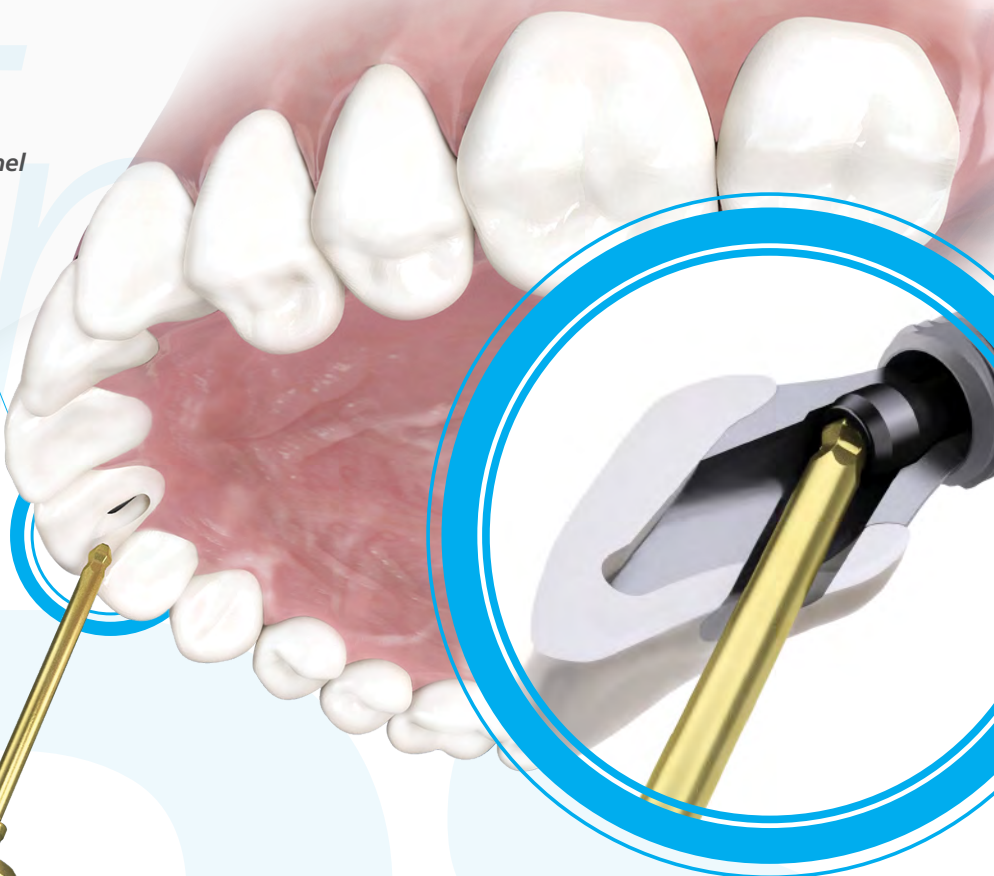
anywhere on the bridge and hybrid restorations to correct angulation issues effortlessly.



ASD 135M

### **TruAbutment ASC screwdriver**

and screws are uniquely designed by TruAbutment for easy access and engagement.



## ASC **Parts** / Driver **Kit**

**TruAbutment ASC** hand-use screwdriver and ratchet drivers will be available in two different lengths.

\*May be universally used across all available implant systems for TruAbutment ASC.

### Screws

TruAbutment DS ASC Universal Screwdriver is required to be used with TruAbutment ASC Abutment and the provided screws.



Hex Surface



Front



\*refer to chart on back for availability



\*refer to chart on back for recommended torque value (used with Ratchet Drivers)

TW 40

**Torque Wrench**



ASD 135M

ASD 135L

**Hand Drivers**



AADR 135M

AADR 135L

**Ratchet Drivers**

## Instructions — **TruAbutment DS ASC**

1



**First**, insert the screw into the access hole.  
Otherwise, you will NOT be able to insert the screw through angulated screw channel after the cementation.

2



**Place** the cotton or teflon tape to prevent excess cement entering the access hole.

3



**Cement** the crown onto the abutment.  
**Then** remove the cotton/teflon tape.

4



**Screw** the final restoration at TruAbutment ASC recommended final torque value.

## Now Available

Manufacturer	Brand	ASC Recommended Screw Torque Value
Dentis	OneQ-SL/S-Clean Mini	15N. Cm
	OneQ-SL/S-Clean Regular	25N. Cm
	i-clean Regular	25N. Cm
Dentium	SuperLine (Implantium) Regular	25N. Cm
	SimpleLine II Regular	25N. Cm
	SimpleLine II Wide	25N. Cm
Dentsply Sirona	Astra Tech™ OsseoSpeed® EV 3.0	25N. Cm
	Astra Tech™ OsseoSpeed® EV 3.6	25N. Cm
	Astra Tech™ OsseoSpeed® EV 4.2	25N. Cm
	Astra Tech™ OsseoSpeed® EV 4.8	25N. Cm
	Astra Tech™ OsseoSpeed® EV 5.4	25N. Cm
	Astra Tech™ OsseoSpeed® TX 3.0	15N. Cm
	Astra Tech™ OsseoSpeed® TX 3.5, 4.0	20N. Cm
	Astra Tech™ OsseoSpeed® TX 4.5, 5.0	25N. Cm
Ankylos C/X		
DIO	UF Mini	15N. Cm
	UF Regular	25N. Cm
	UF Internal Regular	25N. Cm
	UF Internal Wide	25N. Cm
	SM Small	25N. Cm
	SM Regular	25N. Cm
Hiossen (Osstem)	Hiossen ET (Osstem ET) Mini	20N. Cm
	Hiossen ET (Osstem ET) Regular	25N. Cm
	Hiossen HG Ultra-Wide	25N. Cm
	Hiossen HS (Osstem SS) Regular	25N. Cm
	Hiossen HS (Osstem SS) Wide	25N. Cm
Megagen	AnyOne® Mini	15N. Cm
	AnyOne® Regular	25N. Cm
	ExFeel	25N. Cm
MIS	M4/Seven Standard	25N. Cm
	M4/Seven Wide	25N. Cm
Neobiotech	IS Regular	25N. Cm
	IT Regular	25N. Cm
	IT Wide	25N. Cm
Nobel Biocare	NobelActive™ NP	25N. Cm
	NobelActive™ RP	25N. Cm
	NobelActive™ WP	25N. Cm
	NobelReplace™ NP Conical Connection	25N. Cm
	NobelReplace™ RP Conical Connection	25N. Cm

Manufacturer	Brand	ASC Recommended Screw Torque Value
Straumann®	Bone Level 3.3 NC (Narrow CrossFit™)	25N. Cm
	Bone Level 4.1, 4.8 RC (Regular CrossFit™)	25N. Cm
	synOcta 4.8 RN	25N. Cm
	synOcta 4.8 WN	25N. Cm
Zimmer® Dental	Zimmer Eztetic™ 3.1	25N. Cm
	Tapered Screw - Vent™ 3.5, 4.5, 5.7	25N. Cm
	Biomet 3i Certain™ 3.4	20N. Cm
	Biomet 3i Certain™ 4.1	20N. Cm
	Biomet 3i Certain™ 5.0	20N. Cm
	Biomet 3i Certain™ 6.0	20N. Cm

Available **September 2018**

Manufacturer	Brand	ASC Recommended Screw Torque Value
Implant Direct	Legacy 3.0	25N. Cm
Keystone Dental	PrimaConnex™/Genesis™ 3.8 SD	25N. Cm
	PrimaConnex™/Genesis™ 4.5 RD	25N. Cm
	PrimaConnex™/Genesis™ 5.5/6.5 WD	25N. Cm
Neoss	ProActive Straight 3.25	25N. Cm
	ProActive Straight 3.5, 4.0, 4.5, 5.0, 5.5	25N. Cm
	ProActive Tapered 3.5, 4.0, 4.5, 5.0, 5.5	25N. Cm
Nobel Biocare	NobelActive™ 3.0	15N. Cm
Straumann®	Bone Level 2.9 SC (Narrow CrossFit™)	25N. Cm



CAM Validation



Split-File



100% Machine-Milled



No Manual Polishing Necessary



No Milling Disc



No Pre-milled Blanks



Life-time Warranty



100% Satisfaction