



# **Trust Cyber Gun**

**User's Manual**



### **Copyright Statement**

No part of this manual may be reproduced or transmitted, in any form or by any means, electronic or mechanical, including photocopying, recording, or information storage and retrieval systems, for any purpose other than the purchaser's personal use, without the prior written permission of the manufacturer.

### **Disclaimer Statement**

The manufacturer specifically disclaims all warranties, either express or implied, including but not limited to implied warranties of merchantability and fitness for a particular purpose, with respect to the software, the product manual(s) and written materials, and any other accompanying hardware. The manufacturer reserves the right to revise or make improvements to its product at any time and without obligation to notify any person of such revisions or improvements.

In no event shall the manufacturer be liable for any consequential or incidental damages, including any loss of business profits or any other commercial damages, arising out of the use of its product.

\* All company or product names are trademarks or registered trademarks or service marks of their respective owners.



---

## Table of Contents

<b>Chapter 1: Introduction .....</b>	<b>1</b>
1.1 System Requirements.....	1
1.2 Features.....	2
1.3 Package Contents and Unpacking .....	2
<b>Chapter 2: Safety .....</b>	<b>3</b>
<b>Chapter 3: Hardware installation.....</b>	<b>5</b>
3.1 A Word About VGA Feature Connectors .....	5
3.2 CyberGun Interface Card Installation .....	6
3.3 CyberGun Components.....	8
3.4 Using Your CyberGun .....	9
3.5 How to improve CyberGun reliability .....	9
<b>Chapter 4: Game Installation .....</b>	<b>11</b>
4.1 Install Overseas Mission (DOS Version).....	11
4.2 Install Overseas Mission (Windows95 Version).....	11
4.3 Important Notes:.....	12
4.4 Music and Sound Effects Setup (DOS Version).....	13
<b>Chapter 5: Important Notes .....</b>	<b>15</b>
<b>Chapter 6: Cleaning and maintenance .....</b>	<b>17</b>
<b>Chapter 7: Troubleshooting.....</b>	<b>19</b>
7.1 Technical specifications.....	23





---

## Chapter 1: Introduction

Greetings gunslinger! Welcome to the light gun game of the future. You are about to embark on a high-speed adventure never before experienced. There is no need to go to a video game arcade. Simply sit behind your computer screen and prepare to do battle against organized crime in cyberspace. The "CyberGun," delivers 3-D realism, stereo sound effects and other techno-wizardry to your multi-media PC. Now you can enjoy the cutting-edge technology of virtual gunfighting right in the comfort of your own home.

### 1.1 System Requirements

<b>Computer:</b>	IBM PC/AT 486, Pentium or compatible
<b>CPU:</b>	At least 486-66, 486-100 or Pentium recommended
<b>RAM:</b>	Min. 8 MB, 16 MB recommended
<b>Mass Storage:</b>	Min. 20 MB hard disk space, single speed CD-ROM, double speed or higher recommended
<b>Operating System:</b>	Windows 95, DOS 5.0 or higher
<b>Display Adapter:</b>	Standard VGA, VESA Local or PCI recommended
<b>Input Devices:</b>	CyberGun
<b>Sound card:</b>	Trust Sound Expert de Luxe Series, Sound Blaster Normal, Pro, Pro II and 16, MPU-401, Pro Audio 8, Pro Audio 16, Microsoft Sound System, Turtle Beach Multi Sound, ADLIB, ADLIB Gold



## **1.2 Features**

- Supports any VGA standard mode
- Easy-to-install interface card
- High quality, precise light gun
- Game software included

## **1.3 Package Contents and Unpacking**

Please inspect the contents of the CyberGun package you received. You should have the following items:

- One CyberGun
- One Interface Card
- One VGA Feature Connector Cable
- CD-ROM with game software
- This User's Manual
- Software User Manual

If anything is missing or damaged, contact your dealer right away.



## **Chapter 2: Safety**

1. Remove the power plug of your computer from the wall outlet first before installing any hardware into your PC.
2. Adding or removing hardware when the computer is switched on, may result in serious injury to yourself or damage to your computer.
3. Wipe the CyberGun off with a soft cloth if it needs cleaning. Never immerse in water or other liquid.
4. Never repaint or change the appearance of the CyberGun. The CyberGun has been designed to prevent that it will be mistaken for a real weapon. Repainting the gun may lead to criminal prosecution in most European Countries.







## Chapter 3: Hardware installation

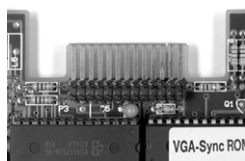
We want you to start using the CyberGun as quickly as possible. Please take a few minutes to read through this user's manual before installing your CyberGun.

### 3.1 A Word About VGA Feature Connectors

The CyberGun interface card uses a 26-pin flat cable that connects to the Feature Connector of your computer's VGA card. Use only the flat cable that comes with your CyberGun. Using the wrong cable may result in damage to the VGA card as well as the CyberGun interface card.

Most VGA interface cards are of the following five types:

1. The old design of the flat-pin type VGA Feature Connector is as follows:



2. This low-cost VGA Feature Connector has no fancy design:

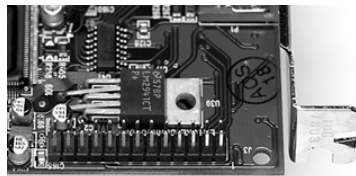


3. This 26-pin connector is not the VGA Feature Connector but the "WAVE TABLE" connector:

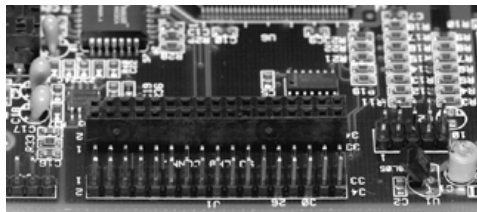




4. Most VGA cards like the following have a 26-pin full-function VGA Feature Connector. This type is ideal for the CyberGun. If you do not have this type, you may have to change your VGA card.



5. This VESA standard Feature Connector has a total of 34 pins. When installing the CyberGun use only pin 1 to pin 26.



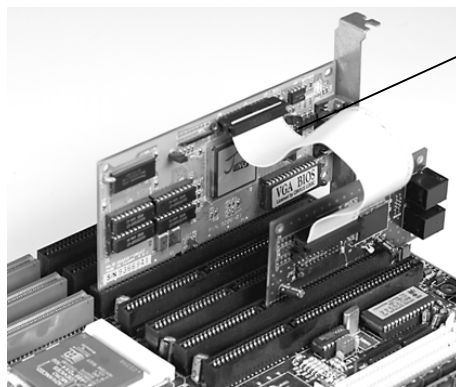
### 3.2 CyberGun Interface Card Installation

If necessary, consult your PC user's manual or your PC dealer and your computer's VGA card user's manual as you perform the following installation steps.

1. Power off your PC/AT and any peripherals (printer, monitor, modem, etc.) attached to your computer.
2. Remove the cover from your PC/AT.
3. Locate an available ISA slot and remove the blank panel. Set the screw aside for the next step.
4. With firm and even pressure, insert the CyberGun interface card into the ISA slot. Once the card is firmly seated in the ISA slot, secure the card using the blank panel screw.
5. Attach one end of the flat cable to the cable connector of the CyberGun interface card. The red edge-stripe on the flat cable indicates pin 1. Align the cable's red edge-stripe with pin 1 of the connector.



6. Attach the other end of the flat cable to the VGA Feature Connector. Align the cable's red edge-stripe with pin 1. Refer to the following figure.



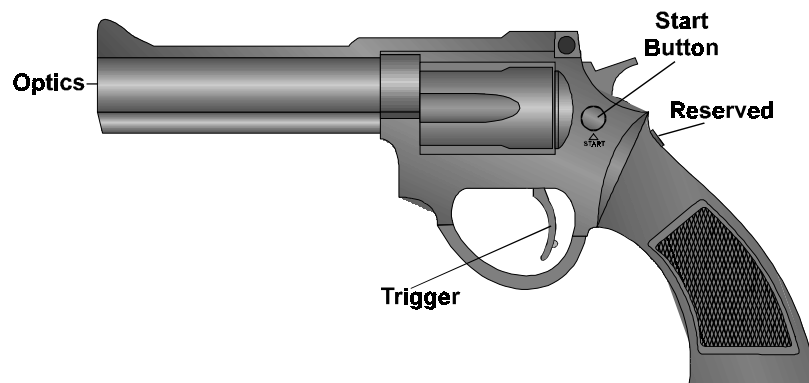
This side must connect to your VGA card's Feature Connector.

**Warning:** Ensure that the red edge-stripe of the flat cable is aligned with pin 1 of both the CyberGun interface card connector and the VGA card feature connector. Incorrect connections may result in damage to both the VGA card and the CyberGun interface card.

7. Plug the CyberGun jack into the RJ-45 phone jack (player1). If you purchased two guns, please plug the other gun into the player2 jack.



### 3.3 CyberGun Components



1. **Start Button:**  
Use this button as you would on a standard controller, i.e., the button on a joystick. Depending on your software, use it to select menu options, step through menus, start your game and fire rockets.
2. **Trigger:**  
Game software allows you to squeeze and hold the trigger to build power in your shot (consult your game manual). Otherwise, just aim and fire.
3. **CyberGun Optics:**  
This is where all the action starts. Notice the lens in the CyberGun barrel. Keep the lens clean, and don't scratch it. If it gets dusty, carefully wipe it with a clean soft cloth.

Warning: DO NOT use cleaning agents on the CyberGun optics as this may damage the lens.



#### **4. Connector:**

At the end of the cable that runs from the hand grip of the CyberGun there is a phone connector. Plug the connector into the CyberGun card Player1 connector. Now you're ready to start shooting.

Warning: DO NOT repaint or change the appearance of the CyberGun. The CyberGun has been designed to reduce the chance that it will be mistaken for a real weapon.

### **3.4 Using Your CyberGun**

**GUN ADJUST(Calibration):** Your CyberGun optics have been factory aligned for the best possible accuracy. However, you will probably want to calibrate the CyberGun for the special conditions of your own PC environment. This is where you would "dial in" the sights of the CyberGun.

**For 2-Player Games:** Add a second CyberGun to team up with a friend or shoot head-to-head.

### **3.5 How to improve CyberGun reliability**

Don't use the CyberGun under strong lighting conditions. Strong ambient light interferes with the CyberGun's light detection optics.

Before using the CyberGun, remove the filter from your computer monitor.

For detailed troubleshooting information please refer to the Troubleshooting Section of this manual.





## Chapter 4: Game Installation

### 4.1 Install Overseas Mission (DOS Version)

1. Insert the Overseas Mission CD-ROM into your CD-ROM drive.
2. Change to the appropriate drive letter by typing the name letter followed by a colon at the DOS prompt, then type INSTALL, followed by the [Enter] key (e.g. D:\INSTALL [Enter]).
3. The Installation screen appears. Select the target drive with the arrow keys and confirm your selection by pressing [Enter].
4. The Installation program will create a directory called OVERSEAS on the drive you selected.
5. To execute the program in the future, simply change to this directory and type PLAY [Enter].

### 4.2 Install Overseas Mission (Windows95 Version)

1. Insert the Overseas Mission disc into a CD-ROM drive.
2. The CD-ROM runs automatically after inserting into the CD-ROM drive. If the CD is inserted and the installation screen appears, please go to 3, otherwise start the installation by hand with the next instructions. Click the Start button beside the Windows95 task bar, and then click Run command; a Run dialog box will appear. Type the CD-ROM drive letter, followed by a colon (:) and a back slash (\), and the word setup as follows:

D:\SETUP

Click the OK icon to continue through the setup process.



3. The installation dialog box will appear to ask you where you want to install the software. Please enter the destination drive and directory as follows:

C:\GAMES\OVERSEAS

If you want to install the software to another directory, please enter the drive and directory you want or just click OK for the default directory. The Installation program will create the directory you specified.

4. During installation, a dialog box appears showing "installing files..." You may click the Cancel icon to stop installation. The Installation program will copy all necessary files to the directory you specified above.
5. After the files have been copied to your hard disk, a CyberGun folder will appear in Windows.
6. A dialog box with 3 buttons appears: Reinstall DirectX, Restore Audio drivers, Restore Display drivers. You MUST click on Reinstall DirectX. (installing DirectX takes a few minutes). Caution: keep any newer files if Windows 95 asks you if you want to replace the existing drivers with older versions.
7. Click OK to restart Windows95.
8. Double click the Gamebios setup icon.
9. Click Test Light Gun button.
10. If the dialog box shows "Light Gun test OK" skip STEP 11. If the dialog box shows Light Gun test failure, go to STEP 12.
11. Click Port Address to select any address that your PC devices is not using. Go to Step 9.
12. Click on the OK button to quit the Gamebios setup task.
13. Double click on the overseas mission icon to start the game.

#### **4.3 Important Notes:**

1. You may adjust the screen brightness under the game OPTION, BRIGHT menu item if a bullet hole does not appear when pulling the trigger.

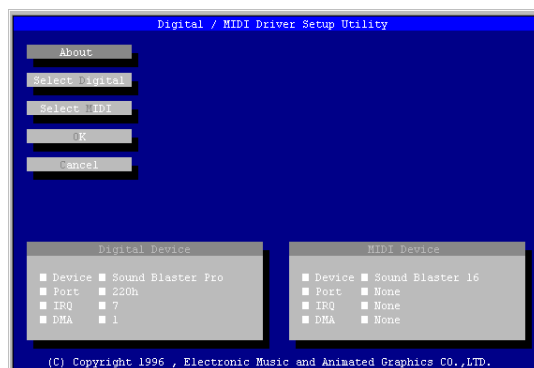




2. When there is an open file error during DirectX installation, please click on the DirectX SETUP task icon to reinstall DirectX or run recover WINDOWS95 command.
3. After installing the software, you should adjust your CyberGun before you play the game. Under the game menu, select OPTION, GUN ADJUST and follow the steps listed below:
  - a) Aim at the center of the target disk on the screen and pull the CyberGun trigger.
  - b) Aim at any place on the target disk and pull the CyberGun trigger. A bullet hole should appear at the place you aimed. If not, please repeat step a.
4. The software is described in detail in a separate Software Manual.

#### 4.4 Music and Sound Effects Setup (DOS Version)

Before you can start playing, you need to configure the game options. Log on to the OVERSEAS directory and type SETUP. In the Sound Card Setup window, Here you can use the arrow keys, [Enter] and the [Esc] key to make, confirm, or cancel your selections.



- Select Digital:    Sound Effect Setup (DOS Version)  
Device:            Select your sound effects device.  
Port:              Select the correct I/O port.



- 
- IRQ:           Select the correct interrupt request.
- DMA:           Select the correct DMA channel.
- Test:           Test the equipment.
- 
- Select MIDI:   Music Setup (DOS Version)
- Device:        Select your musical device.
- Port:           Select the correct I/O port.
- IRQ:           Select the correct interrupt request.
- DMA:           Select the correct direct memory access channel.
- Test:           Test the equipment.
- OK:            Once you have confirmed the correct setup of your card, press OK to end the setup process. The program will save all changes and terminate.
- Cancel:         Use Cancel to exit the setup program without saving any changes.



---

## Chapter 5: Important Notes

1. Do not use the CyberGun in direct sunlight. The CyberGun does not work well under strong lighting conditions.
2. Adjust your monitor BRIGHTNESS and CONTRAST to the maximum level.
3. Please do not use a (screen) filter.
4. The first time you play, please calibrate the CyberGun under the GUN ADJUST menu; aim at the center of the target disk and pull the trigger
5. System Requirements are: 486DX2-66 above, 8MBytes RAM, CD-ROM drive, VESA or PCI VGA card with a FEATURE connector.
6. Run GAMECFG to configure your CyberGun interface card ( I/O address).
7. Please run setup to configure your sound card. The game might not run correctly or run at all without a compatible sound card.
8. Make sure that your VGA card has a FEATURE connector.





## **Chapter 6: Cleaning and maintenance**

1. The CyberGun needs no special maintenance. Just remove dust and fingerprints with a damp and soft cloth. Never use alcohol or other aggressive solvent to clean as this damages the material of the CyberGun.
2. Never touch the lens in the barrel. Fingerprints are difficult to remove and degrade the performance of your CyberGun.
3. Never immerse the CyberGun in water or other liquid. This will destroy it and may cause danger.
4. There are no adjustable parts on the interface board. Handle the interface board with care and don't touch the golden fingers on the board.





## Chapter 7: Troubleshooting

This section provides important information about some of the problems you may run into when installing the CyberGun hardware and software. There are also answers to some of the questions you may have about the game software.

**Problem:** The screen is dark after I power on the PC/AT

**Solution:** First, please check that pin 1 of the FEATURE connector on the VGA card is properly aligned with the red edge-stripe of the flat cable. The cable may be inserted up side down. Second, you may have forgotten to reconnect the monitor to the VGA connector ( DB 15 pin )

**Problem:** My CyberGun does not shoot accurately.

**Solution:** Use the GUN ADJUST menu option to calibrate your CyberGun for your game software.

**Problem:** Why is there only one hole after I press the trigger under the GUN ADJUST menu option?

**Solution:** You forgot to insert the 26-pin flat cable into the VGA FEATURE connector. Refer to Section 2 of the manual for instructions.

**Problem:** There is no sound when I play the game under the DOS environment.

**Solution:** Ensure that your sound card is properly installed. You should run setup to configure your sound card. Remember to run a test to make sure the sound card is working properly. Also check the speaker connection. The speakers may be disconnected or a speaker cable could be shorted out or broken.



**Problem:** There is no response when I play the game under the DOS environment.

**Solution:** Please run setup and set the control unit to light gun, not mouse or keyboard.

**Problem:** A dialog box appears with this message: "DSOUND.DLL not found under WIN95."

**Solution:** You did not properly install DIRECTX. Please put the CD disk into the CD-ROM drive and reinstall DIRECTX

**Problem:** There is a Gamebios test failure or support device board not found error message.

**Solution:** Please refer to your PC system manual and I/O card manual. Change the CyberGun I/O address to a setting other than 210H, and run a test.

**Problem:** My game does not work. A screen appears with this message: File not found! Bye-bye!!

**Solution:** Please insert the CD disk into the CD-ROM drive

**Problem:** How do I change the weapon within the game?

**Solution:** The only way to change the weapon is to use your CyberGun to shoot at the weapon picture that appears. There is no way for you to set the weapon you want manually.

**Problem:** The program stops at "loading shape image 0525/0525" when I play under DOS mode.

**Solution:** Please modify your EMM386.EXE environment to NOEMS in CONFIG.SYS.

**Problem:** The picture quality is not smooth under WIN95 but good under DOS.





---

**Solution:** 1. If your system is a PENTIUM with only 16 MBytes of RAM, you must make sure no other programs are running

2. If your system is a PENTIUM with only 8 MBytes of RAM, it will be quite slow when running any applications under windows. You should run under DOS.

3. Your VGA card is a slow ISA-BUS type rather than the recommended PCI-BUS type.

**Problem:** The game runs very slow and there is no sound.

**Solution:** The game is designed to run with a sound card. If no sound card is present, the game might be very slow. Please use compatible sound card and make sure it is installed and working properly before installing the game. The sound can be tested with another game or with the Audio Recorder in Windows.

**Problem:** Besides the start button, there is another button. What is it for?

**Solution:** This button is reserved for another function in the future. At this moment there is no function associated with this button.

**Problem:** The Bye-Bye message appears when loading the program after I type play.

**Solution:** You cannot play the game from the DOS prompt under WIN95 or WIN3.1, but you can play the game under the DOS system environment. Also, you must have a CD-ROM drive.

**Problem:** My game does not respond when I press any of the CyberGun buttons.

**Solution:** 1. Check and make sure that the flat cable and the connector are firmly seated. 2. Check that the Gamebios I/O does not conflict with other I/O settings.



**Problem:** There is a “Support device board not found” error. What does this mean?

**Solution:** 1. Check that there is not a Gamebios I/O conflict. 2. Make sure the CyberGun interface card is firmly seated. 3. If the problem still persists, change the CyberGun interface card; your card is bad. Please contact your computer dealer for assistance.

**Problem:** When I pull the CyberGun trigger, the screen only flashes. There is no other response.

**Solution:** Please adjust the monitor BRIGHTNESS and CONTRAST to the maximum level. Make sure your monitor filter is removed.

**Problem:** My target disk does not respond when I pull the CyberGun trigger.

**Solution:** Your VGA card may not have the proper 26-pin FEATURE connector. Check your VGA card user's manual. The CyberGun will not work if the connector is not a 26-pin FEATURE connector.

**Problem:** My VGA card is connected to an MPEG card. There isn't a Feature connector available for the CyberGun. What should I do?

**Solution:** Please check your VGA card for an additional Feature connector. If there isn't one, please remove your MPEG cable from the VGA card first. Then connect it to one of the CyberGun interface card's Feature connector slots. Next, connect one end of the flat cable (the cable that came packaged with the CyberGun) to the CyberGun's second Feature connector slot. Then connect the other end to the VGA card's Feature connector.



### **7.1 Technical specifications**

Type of operation	: Lightgun interface card
Bus	: ISA 8 or 16 Bit
I/O	: Range from 210 to 300 in steps of 10
IRQ	: None needed
Gun	: Lightgun type with 2 buttons
Configuration	: Made by software only, non Plug & Play
Maximum distance	: 2 meters on a 14 inch monitor
Number of players	: 1 or 2 (2 with extra set of CyberGun)