



**WOOD & HIGH-DENSITY
RAIL WALK-INS**



**Trusted Partner in
Temperature-Controlled
Storage Solutions**





ABOUT LEER

INDUSTRIES WE SERVE

Through decades of commitment to product development, customer service and a relentless focus on American-made manufacturing excellence, Leer has continued to shape and drive innovation in the temperature-controlled storage industry. We're dedicated to the success of all our customers - be that customers of our iconic white Ice Merchandisers, Ice Vending Machines, Refrigerated Transports, Reach-In Storage Freezers, or our custom-built Walk-In Coolers & Freezers.

We'd be honored to earn your business and become your trusted partner in temperature-controlled storage solutions. When you buy from Leer, you're not just buying our products but a commitment from all of us and that's a promise to be with you every degree of the way. We're confident our products provide a value that cannot be beaten.

OUR MISSION

- To be your trusted partner in temperature-controlled storage solutions.
- To partner with our customers to design and develop the highest quality, innovative, temperature-controlled storage solutions to meet their ever-changing needs.
- To provide our customers exceptional quality and outstanding customer service at every stage of every interaction.
- To train and support all employee owners to produce products they can proudly label Made-In-The-USA.
- To promote safe and healthy work practices and environments that benefit all.

OUR VISION

We will exceed the highest expectations of our customers, employee owners, partners, shareholders and community by continually delivering the best possible American-made products. We're with you every *degree* of the way.

WE VALUE

- Building Trust
- Wowing Customers
- Constantly Improving
- Working Together
- Embracing Ownership

WHEN YOU BUY FROM LEER

- You have our lifetime support - we're with you every degree of the way.
- We're dedicated to delivering our products right the first time, right every time.
- Our products are intelligent-by-design because we know every degree matters.
- We're 100% employee owned - those employee owners make a distinctive difference because you have the commitment of not just one owner, but hundreds of owners.
- We have decades of commitment to product development and customer service with a relentless focus on manufacturing quality from America's heartland.

WE BELIEVE

- All stakeholders are valuable partners in delivering our vision and executing our mission, and are invested in doing both.
- In best intentions at all times, and taking a commonsense and practical path to address differences.

OUR FAMILY

We're a proud member of Dexter Apache Holdings, Inc. (dexterapache.com), a leading 100% employee-owned company with diverse business interests in the manufacturing, distribution, financial services and mission critical technology industries.

FOODSERVICE

RESTAURANTS / BARS
SCHOOLS

HEALTHCARE

FOODSERVICE
MORTUARIES
PHARMACEUTICAL / LABS

INDUSTRIAL

FOOD PROCESSING FACILITIES
SHELTERS

PACKAGED ICE

ICE MANUFACTURERS
RETAIL

RETAIL

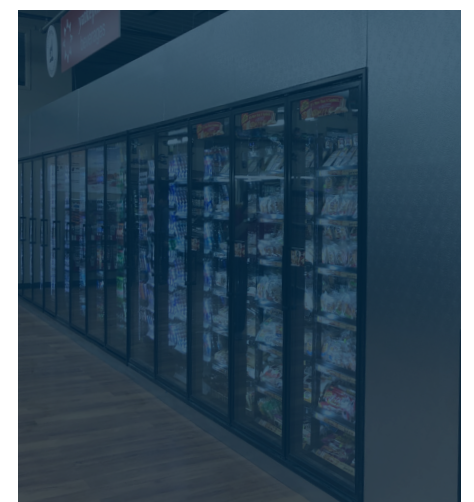
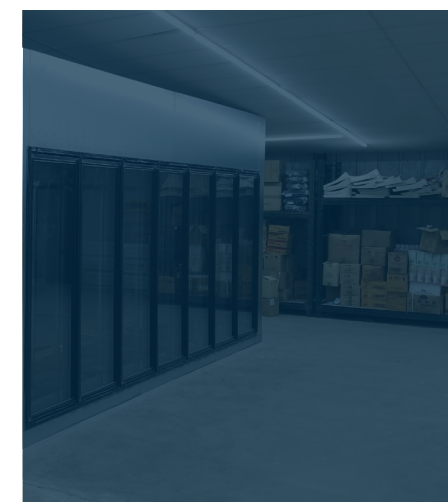
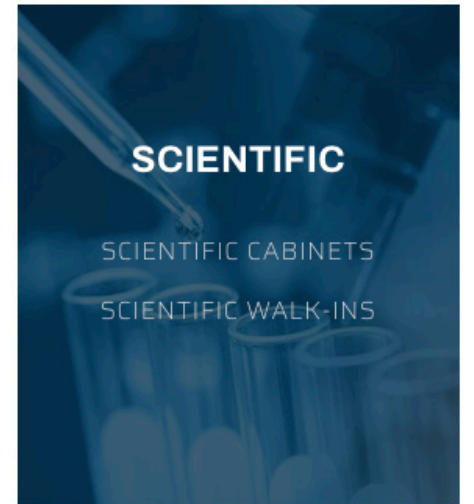
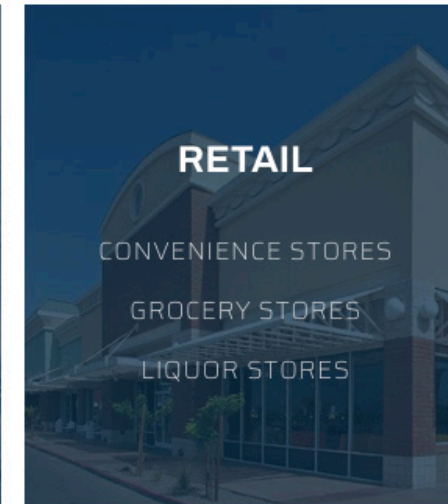
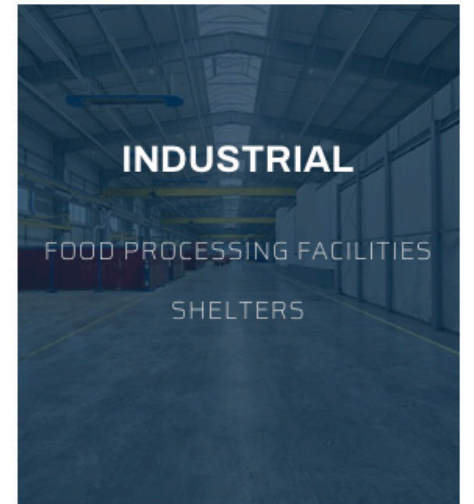
CONVENIENCE STORES
GROCERY STORES
LIQUOR STORES

SCIENTIFIC

SCIENTIFIC CABINETS
SCIENTIFIC WALK-INS

SPECIALTY

BREWERIES / WINERIES
CAMPGROUNDS / RV PARKS
MARINAS / PARKS / BEACHES
/ DOCKS
RENTALS / EVENTS / FAIRS





WOOD RAIL PANEL FEATURES

HIGH-DENSITY RAIL PANEL FEATURES



CEILING TO WALL PANEL ASSEMBLY

Leer's standard Wood Rail Walk-In ceiling is an in-fitting lag-down ceiling. The top of our wall panel features an assembly made up of a plywood skirt and a lateral board. The outside metal is continuous to the top of the plywood skirt. When installing the ceiling, the ceiling panels sit on the board surface and are concealed by the skirting of the top assembly - we refer to this as an in-fitting ceiling. Together the in-fitting and lag-down ceiling provides many benefits. Lag-down ceilings make installation easier by concealing the outer edge of the ceiling panels with the skirting. With a single vertical seam, the aesthetics improve, installation time is saved, and fewer seams means fewer opportunities for the outside elements to get in. This is especially important for outdoor applications. Our floors are also in-fitting provide very similar benefits.



BOTTOM ASSEMBLY OF WALL PANELS

Leer custom builds the wall-to-screed assemblies for floorless Wood Rail Walk-In models. We provide a 1-1/2" treated piece of lumber that is to be secured to the concrete floor. We then use two 3" tall by 5/8" wide pieces of plywood connected by a wood member to make up our bottom assembly which is framed onto our wall panels. The bottom assembly plywood creates a 1-1/2" pocket at the bottom of the wall panel that is designed to sit over the treated wood which was anchored to the concrete floor. When the panel is placed onto the concrete floor's 1-1/2" treated screed, this extra assembly will help secure a firm and stable foundation for the Walk-In unit.

VIDEO LIBRARY LEERINC.COM/VIDEO-LIBRARY

For a full overview and breakdown of Leer's Wood Rail-Walk-In construction, features and benefits, please visit our complete Video Library.



SANDING OF PANEL RAILS

Leer's High-Density foam tongue and groove rails are constructed in a precision mold. To allow the rail to release from the mold, wax is applied to the High-Density rail mold. Once removed, we take the extra step to sand down the rail, ensuring all the wax is removed. This is an extra step and adds a bit of cost to the unit, but it helps ensure the longevity and insulative properties of the box. If the wax is left on, the core foam does not adhere as well to the high-density foam perimeter rail. When applying force to cam the panels to one another, if the wax is not removed, the High-Density foam rail can pull away from the core foam leaving a void that is unacceptable for our standards. Often unnoticed this leaves a void in the insulative barrier, reducing the insulation value and allows a greater amount of outside air infiltration into the box.



PROTECTION AGAINST PANEL CUPPING

When panel frames are injected with foam, the frothing process of the core foam creates extreme pressure until the foam is cured. This pressure has to be addressed or it can cause the high-density foam rails to cup outward. Cupped rails cause panel seams to gap at the panel surfaces as well as causing the overall dimensions of the constructed walk-in to grow. The end result of cupped rails is a dimensionally inaccurate product with thermally insufficient seams. So, during the framing process at Leer, we take the additional steps to protect the rails and prevent rail cupping. This extra step is what helps ensure when our Walk-In arrives at your facility it can be constructed right the first time, right every time.

VIDEO LIBRARY LEERINC.COM/VIDEO-LIBRARY

For a full overview and breakdown of Leer's Wood Rail-Walk-In construction, features and benefits, please visit our complete Video Library.





GENERAL PRODUCT SPECIFICATIONS

WOOD RAIL QUICK SHIP PROGRAM

PANEL CONSTRUCTION

The panels consist of interior and exterior metal clad surface precisely formed with steel dies and roll form equipment and thoroughly checked for uniformity and accuracy. The insulation is “foamed-in-place” polyurethane, and when completely heat cured is bonded to the metal skins and forms a rigid polyurethane insulate panel. Standard Cooler panels for both Wood Rail and High-Density Rail panels are 4”. Standard Freezer panels, for applications 32° F and below are 5 ½” for Wood Rail and 5” for High-Density Rail. To provide structural strength and rigidity, Wood Rail panels have wood perimeters and High-Density Rail panels have High-Density perimeters.

INSULATION

Insulation is “foamed-in-place” polyurethane. Our panels exceed all minimum requirements of the Department of Energy for K-Factor and R-Values. Insulation has a 98% closed-cell structure and average in-place density of 2.0 - 2.2 lbs. per cubic foot.

PANEL FINISH

Exterior and interior surfaces of standard ceiling and sidewall panels are 26-gauge, acrylic coated, embossed galvanized steel.

FLOOR CONSTRUCTION

When a floor is required, panels are 4 5/8” thick, constructed with 4” of insulation and covered with 5/8” underlayment with .050 smooth aluminum. The floor is rated for a uniformly distributed load up to 800 pounds per square foot. For heavier load applications, a Super Floor, with additional reinforcement and a 2nd layer of underlayment, is available.

WALK-IN DOORS

The standard door (34”x78”) is an overlap design unless otherwise specified. All doors 42” in width or less are designed to be self-closing using a brushed chrome positive seal latch with keyed cylinder lock and strike plate. The door and frame are of similar construction and finish as the wall panels. The standard door frame consists of either a wood or high-density rail perimeter onto which the interior and exterior metal skins are secured, creating a thermal break between metal facings. Each freezer door has anti-condensate heater wires concealed behind the exterior skin, and a second wire in the door frame. The heater wires are accessible should a need for service arise. Applications of over 32°F do not require a heated door or frame. A digital thermometer is provided for the opening side of the frame. The thermometer is accurate to plus/minus 1°F and is NSF Certified.

CAM-ACTION LOCKING FASTENERS/SECTION GASKETING

Cam-action locking devices are precisely positioned in the panels to insure a positive joint. The locking devices consist of cam-action rotating locking arms in the tongue edge. The locking arms engage a steel rod which is firmly anchored in the groove edge. This action draws all joints tightly together for excellent strength and a tight seal. Locking of standard panels is performed from the interior of the walk-in by means of a provided hex wrench. The hex wrench holes are covered with a plastic plug button upon completion of the installation.

DOOR HARDWARE

The standard door hinges are a spring-loaded, cam-lift design and have a brushed chrome finish. The hinges have steel pins with nylon bushings. The hinges have a minimum 9” strap and are installed in sufficient numbers to carry the weight of the door. The standard door latch is constructed of similar materials and of the same finish as the door hinges. The latch is designed to open the door easily with an inside safety release feature that complies with OSHA standards. A safety release sign is affixed to the inside of the door section that clearly explains proper instructions for the safe exit from the cooler or freezer, even if the door has been locked or padlocked on the outside.

DOOR GASKETS

The door gasket is a vinyl material with a concealed magnet which adheres to the metal on the door frame. The gasket design allows for quick and easy replacement in the event the gasket becomes damaged.

LIGHTING

Each entrance door is provided with a vapor-proof light fixture for mounting on the interior door frame. The fixture has a shatter-proof globe. A digital thermometer is provided for the exterior strike side of the door frame. The door frame and door plug are UL listed. All electrical components are shipped loose and UL listed. The vapor-proof light fixture is capable of accepting up to a 60 watt bulb. We recommend LED lighting for an energy efficient alternative. (Bulb not included)

INSTALLATION INSTRUCTIONS

A complete set of instructions and an assembly drawing are included with each order to aid with installation.

QUICK SHIP (2-DAYS)

GET IT FAST WITHOUT COMPROMISING QUALITY!

Wood Rail	Cooler	Freezer																												
Units Available	Indoor units available. Available with Wood Rail Walk-In Cooler standard features and specifications.	N/A																												
Additional Options Available:	<ul style="list-style-type: none"> Standard, Pre-Assembled Remote Refrigeration 4ft LED Lights 	N/A																												
Available Sizes:	<table border="1"> <tr> <td>6'</td><td>8'</td><td>10'</td><td>12'</td><td>14'</td><td>16'</td><td>18'</td> </tr> <tr> <td>■</td><td>■</td><td>■</td><td>■</td><td>■</td><td>■</td><td>■</td> </tr> <tr> <td>■</td><td>■</td><td>■</td><td>■</td><td>■</td><td>■</td><td>■</td> </tr> <tr> <td>■</td><td>■</td><td>■</td><td>■</td><td>■</td><td>■</td><td>■</td> </tr> </table>	6'	8'	10'	12'	14'	16'	18'	■	■	■	■	■	■	■	■	■	■	■	■	■	■	■	■	■	■	■	■	■	N/A
6'	8'	10'	12'	14'	16'	18'																								
■	■	■	■	■	■	■																								
■	■	■	■	■	■	■																								
■	■	■	■	■	■	■																								
Available Heights Without Floor:	<ul style="list-style-type: none"> 7'6" 	N/A																												
Available Heights With Floor:	N/A	N/A																												

QUICK SHIP PLUS (10-DAYS)

Wood Rail	Cooler	Freezer																																													
Units Available	Indoor and Outdoor units available. Available with all Wood Rail Walk-In Cooler standard feature and specifications.	Indoor and Outdoor units available. Available with all Wood Rail Walk-In Freezer standard features and specifications.																																													
Additional Options Available:	<ul style="list-style-type: none"> Standard, Pre-Assembled Remote Refrigeration Drop-In Refrigeration Floor Door Strip Curtains Membrane Roof Cap 4ft LED Lights Kick Plates / Diamond Tread Trim or Closure Panel Coving Corner Guards 	<ul style="list-style-type: none"> Standard, Pre-Assembled Remote Refrigeration Drop-In Refrigeration Floor Door Strip Curtains Membrane Roof Cap 4ft LED Lights Kick Plates / Diamond Tread Trim or Closure Panel Coving Corner Guards 12' Ceiling Panels 																																													
Available Sizes:	<table border="1"> <tr> <td></td><td>6'</td><td>8'</td><td>10'</td><td>12'</td><td>14'</td><td>16'</td><td>18'</td><td>20'</td> </tr> <tr> <td>6'</td><td>■</td><td>■</td><td>■</td><td>■</td><td>■</td><td>■</td><td>■</td><td>■</td> </tr> <tr> <td>8'</td><td>■</td><td>■</td><td>■</td><td>■</td><td>■</td><td>■</td><td>■</td><td>■</td> </tr> <tr> <td>10'</td><td>■</td><td>■</td><td>■</td><td>■</td><td>■</td><td>■</td><td>■</td><td>■</td> </tr> <tr> <td>12'</td><td>■</td><td>■</td><td>■</td><td>■</td><td>■</td><td>■</td><td>■</td><td>■</td> </tr> </table>		6'	8'	10'	12'	14'	16'	18'	20'	6'	■	■	■	■	■	■	■	■	8'	■	■	■	■	■	■	■	■	10'	■	■	■	■	■	■	■	■	12'	■	■	■	■	■	■	■	■	
	6'	8'	10'	12'	14'	16'	18'	20'																																							
6'	■	■	■	■	■	■	■	■																																							
8'	■	■	■	■	■	■	■	■																																							
10'	■	■	■	■	■	■	■	■																																							
12'	■	■	■	■	■	■	■	■																																							
Available Heights Without Floor:	<ul style="list-style-type: none"> 7'6" 	<ul style="list-style-type: none"> N/A 																																													
Available Heights With Floor:	<ul style="list-style-type: none"> 8' 	<ul style="list-style-type: none"> 8' 																																													



WOOD RAIL FLOOR PANELS

HIGH-DENSITY RAIL FLOOR PANELS

FLOOR	Cooler	Freezer
Construction Details		
Tongue & Groove Rail:	Wood Rail	Wood Rail
Adjoining Style:	Cam-Action Locking Fasteners	Cam-Action Locking Fasteners
Insulation:	Class 1, CFC- and HFC-Free Polyurethane	Class 1, CFC- and HFC-Free Polyurethane
Insulation Density (lbs per ft³):	2.2	2.2
Insulation Type:	Foamed-In-Place	Foamed-In-Place
Gasket:	Pre-Gasketed	Pre-Gasketed
NSF Coving:	Yes	Yes
Panel Dimensions		
Standard Thickness (Inches):	4 5/8	4 5/8
Maximum Length (Inches):	144	144
Maximum Width (Inches):	47	47
Weight Load Capacities		
Standard (lbs per ft²):	800	800
Custom 'Super Floor' (lbs per ft²):	1500	1500
Additional Underlayment/Overlayment:	Yes	Yes
Static vs. Live Load Capacities:	Contact Leer Inc.	Contact Leer Inc.
Panel Finishes		
Standard:	.050 Smooth Aluminum	.050 Smooth Aluminum
Custom:	Upon Request	Upon Request
Available Types		
With Floor:	Yes	Yes
Without Floor (Vinyl Screed):	Yes	Yes
Without Floor (Wood Screed):	Yes	Yes
Without Floor (Flat Bottom):	Yes	Yes
Without Floor (Z-Angle):	No	No

FLOOR	Cooler	Freezer
Construction Details		
Tongue & Groove Rail:	High-Density Rail	High-Density Rail
Adjoining Style:	Cam-Action Locking Fasteners	Cam-Action Locking Fasteners
Insulation:	Class 1, CFC- and HFC-Free Polyurethane	Class 1, CFC- and HFC-Free Polyurethane
Insulation Density (lbs per ft³):	2.2	2.2
Insulation Type:	Foamed-In-Place	Foamed-In-Place
Gasket:	Pre-Gasketed	Pre-Gasketed
NSF Coving:	Yes	Yes
Panel Dimensions		
Standard Thickness (Inches):	4 5/8	4 5/8
Maximum Length (Inches):	144	144
Maximum Width (Inches):	47	47
Weight Load Capacities		
Standard (lbs per ft²):	800	800
Custom 'Super Floor' (lbs per ft²):	1500	1500
Additional Underlayment/Overlayment:	Yes	Yes
Static vs. Live Load Capacities:	Contact Leer Inc.	Contact Leer Inc.
Panel Finishes		
Standard:	.050 Smooth Aluminum	.050 Smooth Aluminum
Custom:	Upon Request	Upon Request
Available Types		
With Floor:	Yes	Yes
Without Floor (Vinyl Screed):	Yes	Yes
Without Floor (Wood Screed):	No	No
Without Floor (Flat Bottom):	Yes	Yes
Without Floor (Z-Angle):	No	No



WOOD RAIL CEILING PANELS

HIGH-DENSITY RAIL CEILING PANELS

CEILING	Cooler	Freezer
CONSTRUCTION DETAILS		
Tongue & Groove Rail:	Wood Rail	Wood Rail
Adjoining Style:	Cam-Action Locking Fasteners	Cam-Action Locking Fasteners
Insulation:	Class 1, CFC- and HFC-Free Polyurethane	Class 1, CFC- and HFC-Free Polyurethane
Insulation Density (lbs per ft³):	2.2	2.2
Insulation Type:	Foamed-In-Place	Foamed-In-Place
Gasket:	Pre-Gasketed	Pre-Gasketed
PANEL DIMENSIONS		
Standard Thickness (Inches):	4	5 ½
Maximum Length (Inches):	208	208
Maximum Width (Inches):	47	47
Outdoor Dimensions	Contact Leer Inc.	Contact Leer Inc.
WEIGHT LOAD CAPACITIES		
Capacities:	Contact Leer Inc.	Contact Leer Inc.
Structural Steel Support:	Upon Request	Upon Request
Ceiling Hanger Support:	Upon Request	Upon Request
PANEL FINISHES		
Standard:	<ul style="list-style-type: none"> 26-Gauge, Acrylic Coated, Embossed, Galvanized Steel 	<ul style="list-style-type: none"> 26-Gauge, Acrylic Coated, Embossed, Galvanized Steel
Stock:	<ul style="list-style-type: none"> 26-Gauge, Black or White, Stucco-Embossed, Galvanized Steel 26-Gauge, Natural, Stucco-Embossed, Galvanized, Aluminum .032, White or Natural, Stucco-Embossed, Aluminum 	<ul style="list-style-type: none"> 26-Gauge, Black or White, Stucco-Embossed, Galvanized Steel 26-Gauge, Natural, Stucco-Embossed, Galvanized, Aluminum .032, White or Natural, Stucco-Embossed, Aluminum
Custom (May Extend Lead Time):	Upon Request	Upon Request
AVAILABLE TYPES		
Cam Down:	Yes	Yes
Lag Down:	Yes (In-Fitting)	Yes (In-Fitting)

CEILING	Cooler	Freezer
CONSTRUCTION DETAILS		
Tongue & Groove Rail:	High-Density Rail	High-Density Rail
Adjoining Style:	Cam-Action Locking Fasteners	Cam-Action Locking Fasteners
Insulation:	Class 1, CFC- and HFC-Free Polyurethane	Class 1, CFC- and HFC-Free Polyurethane
Insulation Density (lbs per ft³):	2.2	2.2
Insulation Type:	Foamed-In-Place	Foamed-In-Place
Gasket:	Pre-Gasketed	Pre-Gasketed
PANEL DIMENSIONS		
Standard Thickness (Inches):	4	5
Maximum Length (Inches):	144	144
Maximum Width (Inches):	47	47
Outdoor Dimensions	Contact Leer Inc.	Contact Leer Inc.
WEIGHT LOAD CAPACITIES		
Capacities:	Contact Leer Inc.	Contact Leer Inc.
Structural Steel Support:	Upon Request	Upon Request
Ceiling Hanger Support:	Upon Request	Upon Request
PANEL FINISHES		
Standard:	<ul style="list-style-type: none"> 26-Gauge, Acrylic Coated, Embossed, Galvanized Steel 	<ul style="list-style-type: none"> 26-Gauge, Acrylic Coated, Embossed, Galvanized Steel
Stock:	<ul style="list-style-type: none"> 26-Gauge, Black or White, Stucco-Embossed, Galvanized Steel 26-Gauge, Natural, Stucco-Embossed, Galvanized, Aluminum .032, White or Natural, Stucco-Embossed, Aluminum 	<ul style="list-style-type: none"> 26-Gauge, Black or White, Stucco-Embossed, Galvanized Steel 26-Gauge, Natural, Stucco-Embossed, Galvanized, Aluminum .032, White or Natural, Stucco-Embossed, Aluminum
Custom (May Extend Lead Time):	Upon Request	Upon Request
AVAILABLE TYPES		
Cam Down:	Upon Request	Upon Request
Lag Down:	Yes (Not-In Fitting)	Yes (Not-In Fitting)



WOOD RAIL WALL & CORNER PANELS

HIGH-DENSITY RAIL WALL & CORNER PANELS

WALL	Cooler	Freezer
Construction Details		
Tongue & Groove Rail:	Wood Rail	Wood Rail
Adjoining Style:	Cam-Action Locking Fasteners	Cam-Action Locking Fasteners
Insulation:	Class 1, CFC- and HFC-Free Polyurethane	Class 1, CFC- and HFC-Free Polyurethane
Insulation Density (lbs per ft³):	2.2	2.2
Insulation Type:	Foamed-In-Place	Foamed-In-Place
Gasket:	Pre-Gasketed	Pre-Gasketed
Maximum Cam Lock Distance (Inches):	62	62
Panel Dimensions		
Standard Thickness (Inches):	4	5 ½
Maximum Length (Inches):	196	196
Maximum Width (Inches):	47	47
Panel Finishes		
Standard:	<ul style="list-style-type: none"> 26-Gauge, Acrylic Coated, Embossed, Galvanized Steel 	<ul style="list-style-type: none"> 26-Gauge, Acrylic Coated, Embossed, Galvanized Steel
Stock:	<ul style="list-style-type: none"> 26-Gauge, Black or White, Stucco-Embossed, Galvanized Steel 26-Gauge, Natural, Stucco-Embossed, Galvanized, Aluminum .032, White or Natural, Stucco-Embossed, Aluminum 	<ul style="list-style-type: none"> 26-Gauge, Black or White, Stucco-Embossed, Galvanized Steel 26-Gauge, Natural, Stucco-Embossed, Galvanized, Aluminum .032, White or Natural, Stucco-Embossed, Aluminum
Custom (May Extend Lead Time):	Upon Request	Upon Request

WALL	Cooler	Freezer
Construction Details		
Tongue & Groove Rail:	High-Density Rail	High-Density Rail
Adjoining Style:	Cam-Action Locking Fasteners	Cam-Action Locking Fasteners
Insulation:	Class 1, CFC- and HFC-Free Polyurethane	Class 1, CFC- and HFC-Free Polyurethane
Insulation Density (lbs per ft³):	2.2	2.2
Insulation Type:	Foamed-In-Place	Foamed-In-Place
Gasket:	Pre-Gasketed	Pre-Gasketed
Maximum Cam Lock Distance (Inches):	31.375	31.375
Panel Dimensions		
Standard Thickness (Inches):	4	5
Maximum Length (Inches):	168	168
Maximum Width (Inches):	47	47
Panel Finishes		
Standard:	<ul style="list-style-type: none"> 26-Gauge, Acrylic Coated, Embossed, Galvanized Steel 	<ul style="list-style-type: none"> 26-Gauge, Acrylic Coated, Embossed, Galvanized Steel
Stock:	<ul style="list-style-type: none"> 26-Gauge, Black or White, Stucco-Embossed, Galvanized Steel 26-Gauge, Natural, Stucco-Embossed, Galvanized, Aluminum .032, White or Natural, Stucco-Embossed, Aluminum 	<ul style="list-style-type: none"> 26-Gauge, Black or White, Stucco-Embossed, Galvanized Steel 26-Gauge, Natural, Stucco-Embossed, Galvanized, Aluminum .032, White or Natural, Stucco-Embossed, Aluminum
Custom (May Extend Lead Time):	Upon Request	Upon Request

CORNER	Cooler	Freezer
Construction Details		
Tongue & Groove Rail:	Wood Rail	Wood Rail
Corners:	1-Piece Corner	1-Piece Corner
Adjoining Style:	Cam-Action Locking Fasteners	Cam-Action Locking Fasteners
Insulation:	Class 1, CFC- and HFC-Free Polyurethane	Class 1, CFC- and HFC-Free Polyurethane
Insulation Density (lbs per ft³):	2.2	2.2
Insulation Type:	Foamed-In-Place	Foamed-In-Place
Gasket:	Pre-Gasketed	Pre-Gasketed

CORNER	Cooler	Freezer
Construction Details		
Tongue & Groove Rail:	High-Density Rail	High-Density Rail
Corners:	1-Piece Corner	1-Piece Corner
Adjoining Style:	Cam-Action Locking Fasteners	Cam-Action Locking Fasteners
Insulation:	Class 1, CFC- and HFC-Free Polyurethane	Class 1, CFC- and HFC-Free Polyurethane
Insulation Density (lbs per ft³):	2.2	2.2
Insulation Type:	Foamed-In-Place	Foamed-In-Place
Gasket:	Pre-Gasketed	Pre-Gasketed



WOOD RAIL SERVICE DOORS

HIGH-DENSITY RAIL SERVICE DOORS

SERVICE DOORS	Cooler	Freezer
CONSTRUCTION DETAILS		
In-Fitting Flush Mounted:	Upon Request	Upon Request
Overlap	Yes	Yes
Structural Frame Material:	Wood Frame	Wood Frame
Pre-Hung:	Yes	Yes
Insulation:	Class 1, CFC- and HFC-Free Polyurethane	Class 1, CFC- and HFC-Free Polyurethane
Insulation Density (lbs per ft³):	2.2	2.2
Insulation Type:	Foamed-In-Place	Foamed-In-Place
Gasket Material:	Vinyl (With Magnet)	Vinyl (With Magnet)
Gasket:	Pre-Gasketed	Pre-Gasketed
Heated:	Upon Request	Upon Request
PANEL DIMENSIONS		
Standard Thickness (Inches):	4	5 ½
Standard Height (Inches):	78	78
Standard Width (Inches):	34	34
Custom Dimensions:	Upon Request	Upon Request
PANEL FINISHES		
Standard:	<ul style="list-style-type: none"> 26-Gauge, Acrylic Coated, Embossed, Galvanized Steel 	<ul style="list-style-type: none"> 26-Gauge, Acrylic Coated, Embossed, Galvanized Steel
Stock:	<ul style="list-style-type: none"> 26-Gauge, Black or White, Stucco-Embossed, Galvanized Steel 26-Gauge, Natural, Stucco-Embossed, Galvanized, Aluminum .032, White or Natural, Stucco-Embossed, Aluminum 	<ul style="list-style-type: none"> 26-Gauge, Black or White, Stucco-Embossed, Galvanized Steel 26-Gauge, Natural, Stucco-Embossed, Galvanized, Aluminum .032, White or Natural, Stucco-Embossed, Aluminum
Custom (May Extend Lead Time):	Upon Request	Upon Request
AVAILABLE TYPES		
Service Doors:	Yes	Yes
Specialty Doors:	Upon Request	Upon Request
HARDWARE		
Door Closer:	Hydraulic, Chrome-Plated	Hydraulic, Chrome-Plated
Door Latch:	Key Lock, Brushed-Chrome	Key Lock, Brushed-Chrome
Safety Release:	Yes	Yes
Door Hinges:	Cam-Lift, Spring-Loaded Self-Closing, Brushed-Chrome	Cam-Lift, Spring-Loaded Self-Closing, Brushed-Chrome
Pressure Release Vent:	N/A	Yes
Sweep Gasket:	Heavy Neoprene, Steel Brackets	Heavy Neoprene, Steel Brackets
Digital Thermometer:	Yes	Yes
Dial Thermometer:	Upon Request	Upon Request
Light Switch:	Included with Thermometer	Included with Thermometer
Light Fixture (Bulb Not Included):	Vapor-Proof, Shatter-Proof Fixture	Vapor-Proof, Shatter-Proof Fixture

SERVICE DOORS	Cooler	Freezer
CONSTRUCTION DETAILS		
In-Fitting Flush Mounted:	Upon Request	Upon Request
Overlap	Yes	Yes
Structural Frame Material:	High-Density Rail Frame (with Wood Support)	High-Density Rail Frame (with Wood Support)
Pre-Hung:	Yes	Yes
Insulation:	Class 1, CFC- and HFC-Free Polyurethane	Class 1, CFC- and HFC-Free Polyurethane
Insulation Density (lbs per ft³):	2.2	2.2
Insulation Type:	Foamed-In-Place	Foamed-In-Place
Gasket Material:	Vinyl (With Magnet)	Vinyl (With Magnet)
Gasket:	Pre-Gasketed	Pre-Gasketed
Heated:	Upon Request	Upon Request
PANEL DIMENSIONS		
Standard Thickness (Inches):	4	5 ½
Standard Height (Inches):	78	78
Standard Width (Inches):	34	34
Custom Dimensions:	Upon Request	Upon Request
PANEL FINISHES		
Standard:	<ul style="list-style-type: none"> 26-Gauge, Acrylic Coated, Embossed, Galvanized Steel 	<ul style="list-style-type: none"> 26-Gauge, Acrylic Coated, Embossed, Galvanized Steel
Stock:	<ul style="list-style-type: none"> 26-Gauge, Black or White, Stucco-Embossed, Galvanized Steel 26-Gauge, Natural, Stucco-Embossed, Galvanized, Aluminum .032, White or Natural, Stucco-Embossed, Aluminum 	<ul style="list-style-type: none"> 26-Gauge, Black or White, Stucco-Embossed, Galvanized Steel 26-Gauge, Natural, Stucco-Embossed, Galvanized, Aluminum .032, White or Natural, Stucco-Embossed, Aluminum
Custom (May Extend Lead Time):	Upon Request	Upon Request
AVAILABLE TYPES		
Service Doors:	Yes	Yes
Specialty Doors:	Upon Request	Upon Request
HARDWARE		
Door Closer:	Hydraulic, Chrome-Plated	Hydraulic, Chrome-Plated
Door Latch:	Key Lock, Brushed-Chrome	Key Lock, Brushed-Chrome
Safety Release:	Yes	Yes
Door Hinges:	Cam-Lift, Spring-Loaded Self-Closing, Brushed-Chrome	Cam-Lift, Spring-Loaded Self-Closing, Brushed-Chrome
Pressure Release Vent:	N/A	Yes
Sweep Gasket:	Heavy Neoprene, Steel Brackets	Heavy Neoprene, Steel Brackets
Digital Thermometer:	Yes	Yes
Dial Thermometer:	Upon Request	Upon Request
Light Switch:	Included with Thermometer	Included with Thermometer
Light Fixture (Bulb Not Included):	Vapor-Proof, Shatter-Proof Fixture	Vapor-Proof, Shatter-Proof Fixture



REFRIGERATION & ACCESSORIES

WOOD RAIL WALK-IN REPLACEMENT DOORS

POPULAR ACCESSORIES AVAILABLE UPON REQUEST:

- LED Lights
- Fluorescent Lights
- Kick Plate
- Strip Curtain
- Vision Windows
- Shelving/Racking
- Trim/Closure Panel
- Door Drip Cap
- Corner Guard
- Locking Bar
- Bumper Rails
- Membrane Roof Cap
- Reinforced Floor
- Reinforced Wall Backing
- Internal Ramp
- External Ramp
- Alarm System Options

REFRIGERATION	Cooler	Freezer
Manufacturing Partner:	Heatcraft Worldwide Refrigeration	Heatcraft Worldwide Refrigeration
Drop-In:	Upon Request	Upon Request
Remote:	Upon Request	Upon Request

REPLACEMENT DOOR

COOLER & FREEZER

CONSTRUCTION DETAILS	
Overlap:	Yes
Structural Frame Material:	Wood Frame
Frame Type:	Jamb or Face
Pre-Hung:	Yes
Insulation:	Class 1, CFC- and HFC-Free Polyurethane
Insulation Density (lbs per ft³):	2.2
Insulation Type:	Foamed-In-Place
Gasket:	Vinyl (With Magnet)
Heated:	Upon Request
PANEL DIMENSIONS	
Standard Thickness (Inches):	4 ¼
Standard Height (Inches):	78
Standard Width (Inches):	36
Custom Dimensions:	Upon Request
PANEL FINISHES	
Standard:	<ul style="list-style-type: none"> • 26-Gauge, Acrylic Coated, Embossed, Galvanized Steel
Stock:	<ul style="list-style-type: none"> • 26-Gauge, Black, White, Almond or Gray, Stucco-Embossed, Galvanized Steel • 18- or 20- Gauge, White or Natural, Stucco or Smooth, Aluminum • 24- or 26- Gauge, White, Smooth, Aluminum • 22-Gauge, Natural, 304 or 316L, Stainless Steel
Custom (May Extend Lead Time):	Upon Request
AVAILABLE TYPES	
Service Doors:	Yes
Specialty Doors:	Upon Request
HARDWARE	
Door Closer:	Hydraulic, Chrome-Plated
Door Latch:	Key Lock, Brushed-Chrome
Safety Release:	Yes
Door Hinges:	Cam-Lift, Spring-Loaded Self-Closing, Brushed-Chrome
Sweep Gasket:	Double Blade, Rubber
Digital Thermometer:	Upon Request
Dial Thermometer:	Upon Request
Light Switch:	Upon Request
Light Fixture (Bulb Not Included):	Upon Request
Kick Plate:	Upon Request
Vision Windows:	Upon Request
Door Drip Cap:	Upon Request



CERTIFICATIONS & WARRANTY

HOW TO BUY

Department of Energy: DOE Compliant



Note: Both Walk-In Panels and Walk-In Doors are DOE Compliant.

NSF International: NSF Listed



Underwriters Laboratories: UL Classified - Panels



Note: Surface Burning Characteristics of Building Materials and Fire Test of Interior Finish Material Classified.

Underwriters Laboratories: UL Listed - Doors



Note: Commercial Refrigerators and Freezers Listed.

Underwriters Laboratories of Canada: ULC Listed - Doors



Note: Refrigeration Equipment Listed. *Wood Rail Only.

International Energy Conservation Code - Energy Independence And Security Act: EISA Compliant



We want to be your trusted partner in temperature-controlled storage solutions and make your buying process as smooth as possible. Therefore, we have several routes to market you can choose from: Purchasing Direct Via Leer, Purchasing Through Our Distributors, or Purchasing Through Our E-Commerce Partners.

PURCHASING DIRECT VIA LEER



Leer Walk-In Sales Offices

19705 US Highway 30 W
Carroll, IA 51401
(800) 766-5337

State Of Wisconsin Department Of Safety And Professional Services: State Of Wisconsin Approved



State Of Oregon Building Codes Division: State Of Oregon Approved



City Of Houston Building Inspection Division: City Of Houston Certified



City Of Chicago Department Of Buildings: City Of Chicago Compliant



Note: Pressure Release Valves for units being shipped into the City of Chicago must be requested.

California Prop 65 Compliant



California Air Resources Board: CARB Compliant



Note: CARB Complaint units must be requested.

MANUFACTURERS REP PARTNERSHIPS

Visit leerinc.com/how-to-buy/how-to-buy-walk-ins/ to locate a Leer Walk-In Representative near you!

A DEDICATED TEAM OF EMPLOYEE-OWNERS READY TO ASSIST YOU

Call Technical Support and Customer Service:

(800) 766-5337

Email Us:

sales@leerinc.com

Fill out the Contact Us Form:

leerinc.com/contact-us

PANEL WARRANTY
10 YEARS
COMPRESSOR WARRANTY
REMOTE REFRIGERATION: 1 YEAR
DROP-IN REFRIGERATION: 2 YEARS
LABOR WARRANTY
30 DAYS

Extended Compressor and Labor Warranties Available



LEER PRODUCTS

LEER PRODUCTS



REFRIGERATED REACH-IN STORAGE

For Restaurant, C-Store, and business owners alike looking to maximize their revenue generating space, Leer's Refrigerated Reach-In Storage units offer a versatile solution to their storage needs by offering customized weatherproof units that feature small footprints but large capacities.



ICE MERCHANTISERS

For ice manufacturers, retail store owners, and special sites alike, Leer is the industry leader in innovation, quality, lead-time and reliability across our lineup of customizable indoor, outdoor, international and specialty Ice Merchandisers.



REFRIGERATED TRANSPORTS & TRUCK BODIES

Leer's Transports & Truck Bodies utilize the same quality materials and construction as our Merchandisers, but are designed to fit your on-the-go needs be that on a trailer or in the bed of your truck. Temperatures can be optimized as a Cooler, Freezer, or for Ice.



ICE VENDING MACHINES

Where there's a need for ice isn't always convenient enough for a whole store. For remote locations, and services without 24/7 employees, Leer's Ice Vending Machines offer the most affordable, reliable and simplest solution to Ice Merchandising needs.

