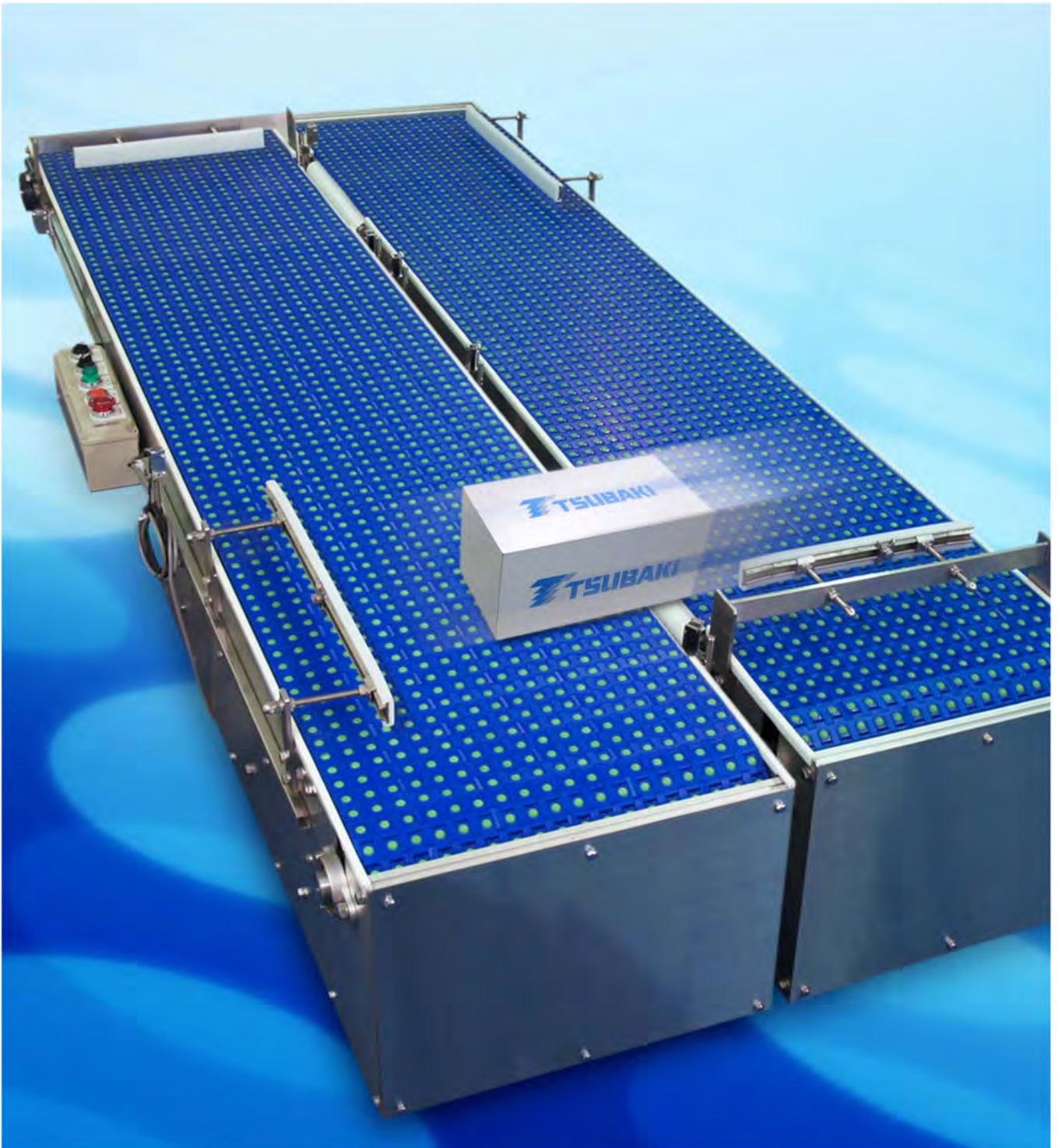


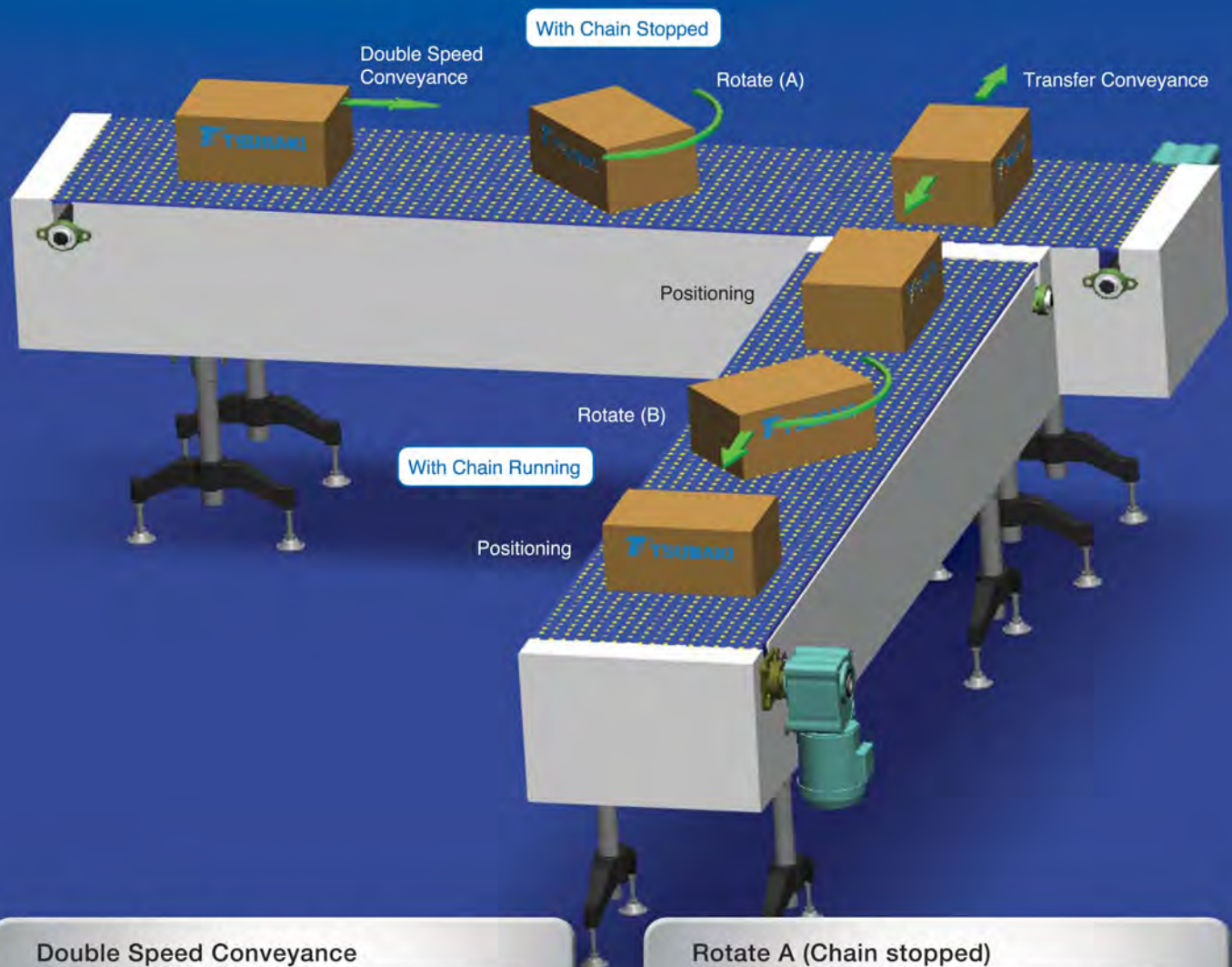
TSUBAKI O-CARRY CONVEYOR

Pat. Pending



Introducing Tsubaki's New Versatile Conveyor

Tsubaki's O-Carry Conveyor can rotate, transfer, and perform a variety of other conveyance functions, and can be installed all on one surface without lifters or other peripheral equipment. Chain running resistance is also reduced through the rotation of the conveyor's balls. Tsubaki O-Carry Conveyor—welcome to new worlds of possibility.



Double Speed Conveyance

The rotation of the balls accelerates the chain's base conveyance speed, effectively doubling its speed. In addition, because running resistance is low, necessary motor power is reduced.

Sorting

A power source beneath the chain allows for left or right side sorting of conveyed items.

Positioning

Even while the chain is still running, the conveyed item can be positioned (stopped) at any point.

Rotate A (Chain stopped)

A power source beneath the chain can rotate the conveyed item to any given degree.

Rotate B (Chain moving)

A power source beneath the chain can rotate the conveyed item 90°/180° while being conveyed.

Other Functions

Centering, parallel movement, separating, and joining are also possible. Contact a Tsubaki representative for further details.

Functions to Fill All Your Needs



Tsubaki's O-Carry Conveyor can offer the following and much, much more!

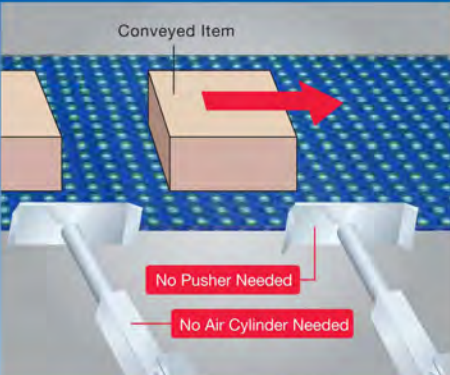
1



Sort conveyed items laterally

The O-Carry Conveyor's balls can laterally transfer conveyed items, allowing you to sort items to another conveyor located on the left, right, or on both sides.

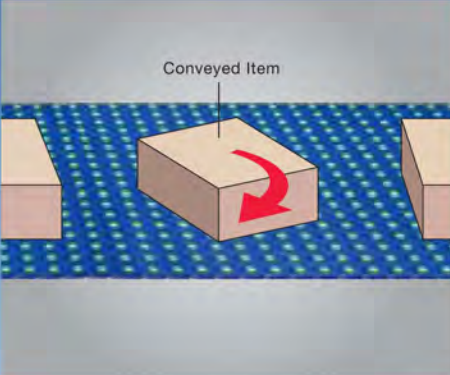
2



Reduce equipment space

There is no need for pushers, lifting devices, or air tubes for transferring, allowing for a compact, space-saving layout.

3



Rotate items smoothly

Conveyed items are rotated by balls — smooth rotation is possible because items are handled on the same surface as they are conveyed.

Tsubaki's O-Carry Conveyor Is On the Ball!

For your safety when using the conveyor



Warning To avoid danger, observe the following rules.

- Do not use chain or chain accessories for any purpose other than their originally intended use.
- Never perform additional work on chain.
 - Do not anneal any chain parts.
 - Do not clean chain with acids or alkalis. These may cause cracking.
 - Never attempt to electroplate chain or chain parts. This may cause hydrogen embrittlement.
 - Do not weld chain. Heating effects will cause weakening and cracking.
 - When a torch is used to heat or cut chain, remove the links on each side and do not reuse them.
- When replacing a worn or damaged part, do not replace just the worn or damaged part. Replace all parts with new parts.
- If a material that causes hydrogen embrittlement (acid, strong alkali, battery fluid, etc.) comes in contact with the chain, immediately stop using the chain and replace it with new chain.
- When using chain in a lifting device, set up a safety barrier and do not allow anyone to go under the equipment.
- Always install safety equipment (safety covers, etc.) on chain and sprockets.
- Strictly observe the general guidelines listed in Section 1, Chapter 1, 2nd Edition of the Japanese Occupational Safety and Health Regulations as well as rules and regulations concerning occupational safety and health in your region/country.
- When installing, removing, inspecting, maintaining and oiling chain,
 - Perform the work as instructed in the manual, catalog or other documentation that was provided with the product.
 - Before starting work, turn off the power switch and take measures to prevent it from being turned on accidentally.
 - Secure the chain and parts to prevent them from moving freely.
 - Use a press tool or other special tools to separate or connect chain, and follow the correct procedures.
 - Remove and insert pins and rivets in the correct direction.
 - Wear clothing and protective gear (safety glasses, gloves, safety shoes, etc.) that are appropriate for the work.
 - Only experienced personnel should perform chain replacement.



Caution To prevent accidents, observe the following rules.

- Understand the structure and specifications of the chain that you are handling.
- Before installing chain, inspect it to make sure no damage occurred during delivery.
- Inspect and maintain chain and sprockets at regular intervals.
- Start and stop the chain gradually, and do not subject it to sudden impact.
- Do not apply initial tension to the chain.
- When using chains with engineering plastic pins under wet conditions, make sure that the temperature does not exceed 60°C (140°F).
- This conveyor is specifically for use in dry environments (no lubricants or water). Do not use the conveyor under wet conditions (environments where it will come into contact with water, soapy water or other liquids), since this may cause the conveyor to malfunction.
- Do not use the conveyor in environments where it will come into contact with water or any other liquids.

Warranty

1. LIMITED WARRANTY

Products manufactured by Seller: (a) conform to the design and specifications, if any, expressly agreed to in writing by Seller; and (b) are free of defects in workmanship and materials at the time of shipment. The warranties set forth in the preceding sentence are exclusive of all other warranties, express or implied, and extend only to Buyer and to no other person. ALL WARRANTIES OF MERCHANTABILITY OR FITNESS FOR A PARTICULAR PURPOSE ARE HEREBY EXCLUDED.

2. NON-RELIANCE

Buyer is not relying upon any advice, representations or warranties (except the warranties expressly set forth above) of Seller, or upon Seller's skill or judgment regarding the Seller's products.

Buyer is solely responsible for the design and specifications of the products, including without limitation, the determination of suitability for Buyer's application of the products.

3. CLAIMS

- (a) Any claim relating to quantity or type shall be made to Seller in writing within 7 days after receipt of the products; any such claim made thereafter shall be barred.
- (b) Any claim under the above-stated Limited Warranty shall be made to Seller in writing within three (3) months after receipt of the products; any such claim made thereafter shall be barred.
- (c) Seller's liability for breach of warranty or otherwise is limited to repair or replacement, at Seller's option, of non-conforming or defective products. Buyer waives all other remedies, including, but not limited to, all rights to

consequential, special or incidental damages, including, but not limited to, damages resulting from personal injury, death or damage to or loss of use of property.

- (d) Repair, alteration, neglect or misuse of the products shall void all applicable warranties.

4. INDEMNIFICATION

Buyer will indemnify, defend and hold Seller harmless from all loss, liability, damage and expense, including attorneys' fees, arising out of any claim (a) for infringement of any patent, trademark, copyright, misappropriation of trade secrets, unfair competition or similar charge by any products supplied by Seller in accordance with the design or specifications furnished by Buyer, or (b) arising out of or connected with the products or any items into which the products are incorporated, including, but not limited to, any claim for product liability (whether or not based on negligence or strict liability of Seller), breach of warranty, breach of contract or otherwise.

5. ENTIRE AGREEMENT

These terms and conditions constitute the entire agreement between Buyer and Seller and supersede any inconsistent terms and conditions, whether contained in Buyer's purchase order or otherwise, and whether made heretofore or hereafter.

No statement or writing subsequent to the date hereof which purports to modify or add to the terms and conditions hereof shall be binding unless consented to in writing, which makes specific reference hereto, and which has been signed by the party against which enforcement thereof is sought. Seller reserves the right to change these terms and conditions without prior notice.

Inquiry Sheet

Company Name	TEL
Department/Title	FAX
Contact Person	E-mail

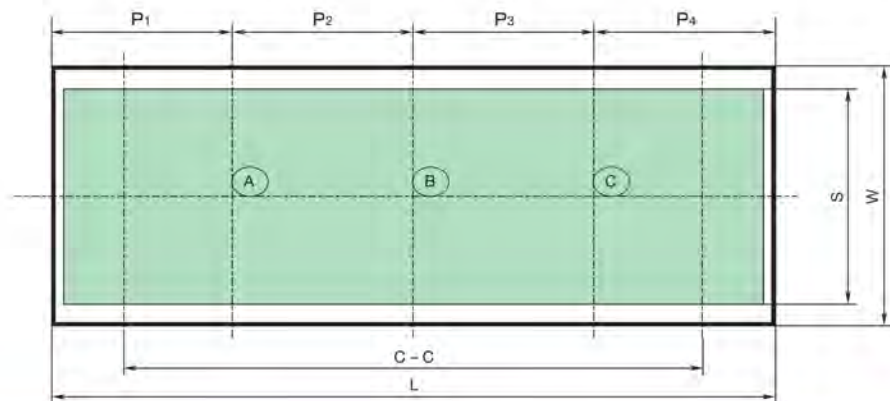
1) Conveyed Items

Item(s)	
Outer Dimensions (Height, depth, width)	mm
Weight	kg/pc

2) Capacity (Conveyed items/minute)

3) Movement by Position

<u>Type of Handling Desired</u>	A
	B
	C
 <u>Handling Position</u>	
	P1 mm
	P2 mm
	P3 mm
	P4 mm



4) Conveyor Dimensions

Conveyor Width (W)	mm
Working Width (S)	mm
Conveyor Length (L)	mm
Center Distance Between Sprockets	mm
Conveyor Surface Height (H)	mm



TSUBAKIMOTO CHAIN CO.

Headquarters

Nakanoshima Mitsui Building
3-3-3 Nakanoshima, Kita-ku
Osaka 530-0005, Japan
Phone : +81-6-6441-0011
Facsimile : +81-6-6441-0489
Internet:
<http://tsubakimoto.com/>

Chain Division

Chain Sales Department
1-3 Kannabidaí 1-chome
Kyotanabe, Kyoto 610-0380, Japan
Phone : +81-774-64-5023/4
Facsimile : +81-774-64-5212

For further information please
contact the Chain Division.



Kyotanabe Plant

Global Associated Partners:

NORTH and SOUTH AMERICA

U.S. TSUBAKI, INC.

301 E. Marquardt Drive
Wheeling, IL 60090-6497
U.S.A.
Phone : +1-847-459-9500
Facsimile : +1-847-459-9515

TSUBAKI of CANADA LIMITED

1630 Drew Road
Mississauga, Ontario, L5S 1J6
Canada
Phone : +1-905-676-0400
Facsimile : +1-905-676-0904

TSUBAKI BRASIL

REPRESENTAÇÃO COMERCIAL LTDA.
R. Pamplona, 1018 - C.J. 73/74
Jd. Paulista - 01405-001
São Paulo - S.P. Brazil
Phone : +55-11-3253-5656
Facsimile : +55-11-3253-3384

EUROPE

TSUBAKIMOTO EUROPE B.V.

Aventurijn 1200, 3316 LB Dordrecht
The Netherlands
Phone : +31-78-6204000
Facsimile : +31-78-6204001

TSUBAKIMOTO U.K. LTD.

Osier Drive, Sherwood Park
Annesley, Nottingham
NG15 0DX U.K.
Phone : +44-1623-688-700
Facsimile : +44-1623-688-789

ASIA and OCEANIA

TSUBAKIMOTO SINGAPORE PTE. LTD.

25 Gul Lane
Jurong
Singapore 629419
Phone : +65-6861-0422/3/4
Facsimile : +65-6861-7035

TSUBAKIMOTO SINGAPORE PTE. LTD.

INDIA LIAISON OFFICE
Suite No. 312, 39/12, Haddows Road
Nungambakkam
Chennai - 600006, India
Phone : +91-44-28303112
Facsimile : +91-44-28303102

TSUBAKIMOTO (THAILAND) CO., LTD.

999/9 The Offices at Centralworld
10th Floor, No. 1001, Rama 1 Road
Pathumwan, Bangkok 10330 Thailand
Phone : +66-2-264-5354/5/6
Facsimile : +66-2-251-3912

TSUBAKI AUSTRALIA PTY. LTD.

Unit E, 95-101 Silverwater Road
Silverwater, N.S.W. 2128
Australia
Phone : +61-2-9704-2500
Facsimile : +61-2-9704-2550

TAIWAN TSUBAKIMOTO CO.

No. 33, Lane 17, Zihciang North Road
Gueishan Township, Taoyuan County
Taiwan
Phone : +886-33-293827/8/9
Facsimile : +886-33-293065

TSUBAKIMOTO CHAIN TRADING

(SHANGHAI) CO., LTD.
Room 1703, Aetna Tower,
107 Zunyi Road, Changning Dist.,
Shanghai 200051, China
Phone : +86-21-5396-6651/2
Facsimile : +86-21-5396-6628

KOREA CONVEYOR IND. CO., LTD.

72-5 Onsoo-Dong
Kuro-Ku, Seoul
Korea
Phone : +82-2-2619-4711
Facsimile : +82-2-2619-0819

Distributed by: