



# **The Ultimate Box**

**User Manual**

## **FCC Regulations Compliance (for USA)**

This equipment has been tested and found to comply with the limits for Class B digital device pursuant to Part 15 of FCC Rules. These limits are designed to provide reasonable protection against harmful interference in a residential installation. This equipment generates, uses and may radiate radio frequency energy and, if not installed and used in accordance with the instructions, may cause harmful interference to radio communications. However there is there is no guarantee that interference will not occur in a particular installation. If this equipment does cause interference to radio or television reception, which can be determined by turning the equipment off and on, the user is encouraged to try to correct the interference by one or more of the following measures: (1) Reorient or relocate the receiving antenna (2) Increase the separation between the equipment and receiver (3) Connect to an outlet on a different circuit.

This equipment has been certified to comply with FCC standards, which are applied to the USA only. A shielded interface cable should be used according to FCC 15.27(C).

Changes or modifications not expressly approved by the manufacturer could void any assurances of safety or performance and could result in violation of Part 15 of the FCC Rules.

## **Canadian Department of Communications Statement**

This digital apparatus does not exceed the Class B limits for radio noise emissions from digital apparatus set out in the Radio Interference Regulations of the Canadian Department of Communications.

This Class B digital apparatus complies with Canadian ICES-003.

## **Radio Interference (210-240V)**

This equipment Complies with EN55022 (CISPER Publication 22)/Class B.

## **Content:**

- Introduction
- Package Contents
- Minimum System Requirements
- Hardware Installation
- Software Configuration
- Screen features and menu options.
- Writing to Embroidery Cards
- Reading Embroidery Cards
- Troubleshooting

## Introduction

*The Ultimate Box* allows you to write to a blank embroidery card as many designs as the card can hold. The best results are achieved by using *The Ultimate Box™* with *The Ultimate Card™* that holds about 500,000 stitches total. You can write designs in PES format for Brother, Baby Lock, Bernina Deco, Simplicity formats and White or, in HUS format for Viking/Husqvarna embroidery machines.

*The Ultimate Box II* is equipped with the second card slot that, in addition to capabilities of *The Ultimate Box*, allows working with cards for Pfaff, Bernina Artista and Deco 330.

**NOTE! Any information that applies to *The Ultimate Box*, also applies to *The Ultimate Box II*. Additional functions performed only by *The Ultimate Box II* are specified throughout this manual.**

You can save designs to your computer by downloading them from the Internet, embroidery design cards, CD's, floppy disks, etc. Using the browsing software supplied, you will browse to the Designs folder, select desired patterns and transfer them to the card.

*The Ultimate Box* writes to and reads from the following cards:

- |   |   |
|---|---|
| <i>The Ultimate Card, Ver. I and II</i> | – 1Megabyte (8Megabit) blank memory card, the largest Brother type (PES) embroidery machines can read.          |
| <i>The Ultimate Card, Ver. III</i>      | – 512Kilobyte blank memory card for Pfaff and Bernina Artista machines. <i>The Ultimate Box II</i> is required. |
| <i>The Ultimate Card, DECO330</i>       | – 512Kilobyte blank memory card for Bernina Deco 330 machine. <i>The Ultimate Box II</i> is required.           |

*The Ultimate Box* reads and saves designs back to the hard drive of your computer from most PES, HUS, Pfaff and Artista cards.

*The Ultimate Box* can be used with any Embroidery software available on the market to create or edit designs.

## The Ultimate Box program

The Ultimate Box program is what you use to control the box. When you run the Ultimate Box program you will be able to:

- Look for designs on your computer, including the drives, networks, etc. Many formats are read. See website for current listing.
- As of this manual printing: PES, PEC, PHB, PHC, HUS, SHV, VIP, VP3, JEF, JEF+, SEW, DST, EXP, XXX, ART (v1- 3), EMB (v1-6), JAN (v1).
- See designs even if they are in .ZIPs
  - Use designs even in some corrupted .ZIPs.
  - Use a Card Area to see what you will be writing to the card.

# *The Ultimate Box User Manual*

---

- See how full the card will be when you write.
- Print templates of designs to be written (or designs that have been read).
- Write designs to cards with no practical limit other than card space.
- Read designs from cards.
- Save the designs from the cards to a folder.
- Plug or Unplug the Ultimate Box while the program is open.
- Cancel or stop an operation at any time.
- Control how designs get split when using older formats / machines.

## **The Ultimate Box+ program**

The Ultimate Box+ is a software program that adds useful features for embroidering. Included are File conversion, Printing, Rotating, Mirroring, and more! These features are often found in other programs, requiring two purchases, and more work; you, the embroiderer, have to switch back and forth between programs.

Perhaps the most important feature of The Ultimate Box+ is that it will automatically reduce the size of a design to fit the hoop on the machine!

When you click the Add Designs button, all this happens for you:

1. The hoop size is set by the Card Format Preferences.
2. The design gets added to the Card Area.
3. The design will be resized, with stitches recalculated!

What could be easier? Yeah!

## **Package Contents**

- Embroidery Card Reader / Writer Box
- Re-writable Embroidery Card
- USB Cable
- Installation CD

## **Minimum System Requirements**

- IBM PC Compatible or MAC computer\*
- Pentium 166 MHz or equal
- 32 Mb Memory
- 16 Mb Available Hard Drive Space
- USB Port
- MS Windows 98/ME/2000/XP/VISTA 32-Bit/Vista 64-Bit/7/8
- Screen Resolution 800x600
- CD ROM Drive

\* MAC users should download and install Emboxer software from <http://embrace.com/emboxer>

## Installation

*Windows 8 and 10 users must [download](#), print and follow Windows 8-10 instructions before taking further installation steps below.*

1. Verify Package Contents
2. Connect USB Cable to the **Card Reader / Writer Box**.
3. Attach the other side of the cable to a **USB Port** of your Computer.  
You can also connect the card reader/writer box to a USB Hub as long as the hub has its own power source (not recommended).
4. Insert the **Ultimate Box** Installation CD into the CD-ROM drive of your computer.
5. After a short delay, the installation process should start automatically. If not, go to "My Computer", select CD drive and RUN UBSetup104.exe file.
6. To install Ultimate Box software, follow the onscreen installation instructions using NEXT button to go to the next screen, ACCEPT the terms and click NEXT to proceed with installation, click Finish on the last screen to finish and close installation window.

**Note!!!** Use **CONTINUE ANYWAY** (or **RUN ANYWAY**) option for any standard Windows warning messages during non-Microsoft products installation.

7. Open **Ultimate Box software**, on the first opening the software will show this screen below:



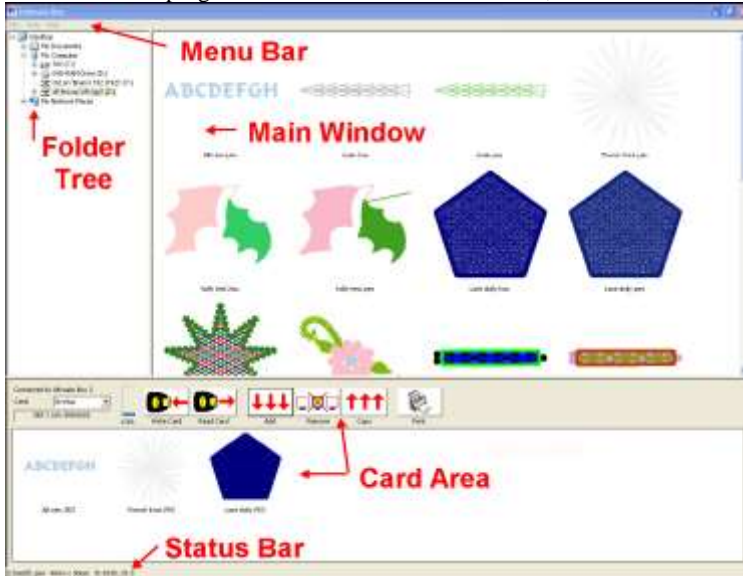
8. Use the number that starts with UBxx... from the installation CD in all capitals and with the dashes.
9. After the Serial number is entered, the Registration Screen will open up, please fill all the fields and click OK to register online your copy of the software. Use S/N: from the back of the Ultimate Box to fill in the **\*Serial number from the Ultimate** field.



---

## The Ultimate Box Basic Program Interface:

The Ultimate Box program window contains several areas, shown below.



### Ultimate Box program areas.

**Title Bar** - appears at the top of the Ultimate Box window.

**Menu Bar** - appears below the Title Bar. The Menu Bar contains the Ultimate Box commands.

**Folder Tree** - Select the folder or .zip file on your computer in which you would like to view designs\*.

**Main Window** - The Main Window displays the design thumbnails contained within a folder or zip file. A 'design thumbnail' is a miniature display of a design in the main window. Hovering over your mouse on a design thumbnail allows you to see the basic information for that design with pop-up showing the size, stitches and colors counts.

**Card Area** - The Card Area displays designs either read from or to be written to the card, design information is available by hovering over your mouse on the design.

**Status Bar** - The Status Bar appears at the bottom of your window.

**Adjusting the screen layout** - You can adjust the amount of space taken up by the individual windows by dragging the splitter bars that separate the windows.

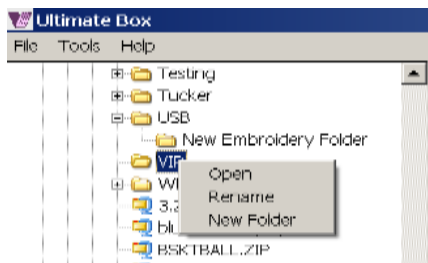
## The Ultimate Box User Manual

---

The program will remember your layout between times when it is run. If you need to adjust the layout automatically, for instance if your display properties is changed, you can select the Tools Menu command, 'Reset Splitters'.

### Managing Folders with the Folder Tree

If you right-click on the Folder Tree, you will see a popup-menu that allows you to Rename, Open or Create new folders. This can save you a lot of time by not having to open up the Windows Explorer program ("My Computer") to browse through your folders.



**Note!!!** New Folder will be created with "New Embroidery Folder" name as a default. Type in the desired name on the creation or choose RENAME to rename new folder after creation.

### The Card Area

#### Inserting Designs into the Card Area



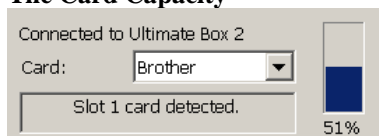
- You can use the Add tool to put designs from your computer or removable media into the Card Area. Once in the Card Area they can be written to the Ultimate Card, printed, etc. When you first open Ultimate Box the Pending folder will be empty.

#### Removing Designs from the Card Area



- First, select designs by clicking, Ctrl-Clicking, or select all with Ctrl-a. Then use the Remove button to remove designs from the Card Area. This does not save or copy the designs; rather it simply removes them from what can be written to the card or folder in the Main Window. You can also hit the 'Delete' key.

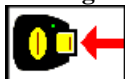
#### The Card Capacity



- Just like a gas tank, this measures how much the inserted card can hold as you submit designs from Main Window down to Card Area.

## Writing to Embroidery Cards

### Writing a Card

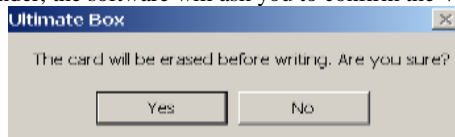


- Use the Write button to transfer your designs from the Card Area to the Ultimate Card.

If you have too many designs for the card, you will see a message telling you to remove some designs. Because various card formats are handled very differently, it is difficult to tell how many designs will fit on a card.

### To Write Designs to a Card:

1. Make sure the Ultimate Card is inserted.
2. Select the CARD format for the card using the down-down window on the left side of the Card Area.
3. Select a design from Main Window and click the **ADD** button to add the design down to the Card Area.
4. When you have finished adding designs to the card area click the **WRITE** button to start writing design(s) to the card.
5. As a last reminder, the software will ask you to confirm the **Write** procedure.



Select **YES** to start the writing process. Select **NO** to cancel.

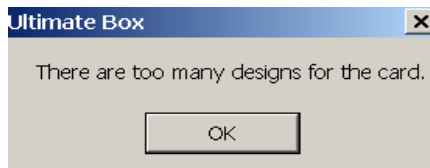
When **WRITE** operation is complete, take the card out of the reader/writer box, insert it into your sewing machine and start embroidering.

Remember, if you do not see a design in the Card Area, it will not be on your card when the writing is complete!

**WARNING: All data on re-writable embroidery cards will be erased before any new information can be written to it. Make sure that any valuable data is saved on the hard drive of your computer or move it to the holding area before you write to the card.**

### Write Card Error

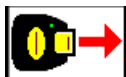
If you have chosen more design files then will fit on the card, a warning message will appear.





1. Click **OK**. The card is at full capacity, no more designs can be submitted for writing.
2. Click on **WRITE** button to write all submitted designs to the card.

### Reading Embroidery Cards

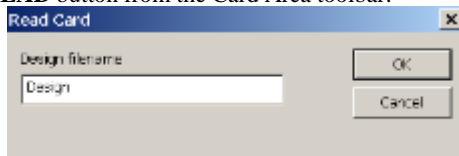


- Use the Read option to transfer designs from the Card to Ultimate Box. When Ultimate Box reads a Card, a copy of each design on the Card will be displayed in the Card Area.

**NOTE!!! All designs in the Card Area are removed and replaced by the designs read from the embroidery card.**

#### To Read a Card:

1. Make sure the card is inserted properly in the Ultimate box.
2. Click the **READ** button from the Card Area toolbar.



3. Design filename prefix will be prompted. Modify this if desired and click OK. Designs will use this prefix and be assigned sequential numbers. The card is read and the designs are displayed in the Card Area.
4. Use the **Folder Tree** to navigate to the desired folder. You can also create a new folder to store the designs using right click and New Folder option.
5. After the destination folder is selected, click **COPY** button in the Card Area toolbar to save all the designs into the Card Area up to the folder displayed in the Main Window. Note that only selected designs in the card area are copied.

Ultimate Box will begin reading the card. Depending on the size and number of designs on the card, this may take a few minutes, once completed the designs will appear in the Card Area.

### Converting Designs

Using the above sequence, you can also convert designs into the format used by the card that's currently inserted. For example, insert a card into Slot 1 on the Ultimate Box and insert some designs into the Card Area. Now select either Brother or Viking in the Card format list. The designs in the card area will now be set to that format. You can now simply save a copy of the designs, and they will be converted.

## Unzipping and Repairing Corrupt ZIP Files

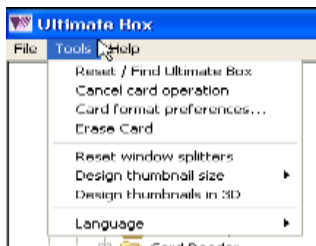
Using the same process as defined above in 'Converting Designs', you can unzip a file or files. Also in this process, damaged .ZIP headers are repaired automatically. This is useful because there are a lot of designs on the Internet that were converted with older software known to make those corrupt .ZIPs.

## Printing Design Templates



- Use the Print button to print actual-size templates for each of the designs sent to the Card Area.

## The Tools Menu



## Resetting the Box

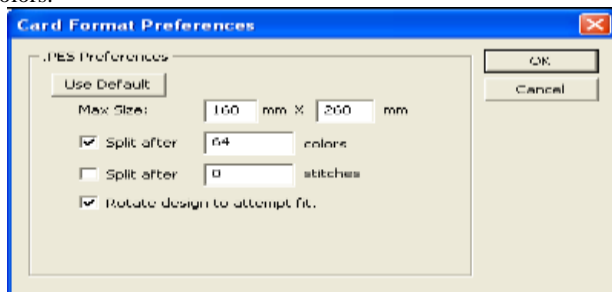
In the highly unlikely event that the program cannot automatically reset the box connection, you can try the Reset/Find Box command from the Tools Menu. Alternately, unplug and re-plug your box from the computer.

## Cancelling an operation

Sometimes you may realize you've started a long write, but forgot to include a design. Using this menu command, you can cancel what you are doing and start over.

## Splitting designs for a given format

Use the Card Format Properties command from the Tools Menu to display the Format Properties for the selected card format. Designs need to be split due to the limitations of embroidery machine hardware. For instance Pfaff 7570 machines cannot use more than 16 colors.



## *The Ultimate Box User Manual*

---

If you are unsure about these settings, leave them alone or click 'Use Default'. Your Embroidery Machine retailer may be able to help you improve these settings for newer machines that do not need to split designs with the same parameters as older machines.

### **Erasing a Card**

You can manually erase a card if desired (you do not need to) using the Tools Menu option, 'Erase Card'.

### **Reset Window Splitters**

If you've moved your splitters around and simply can't find them, or if you've changed your Display Properties in Windows, you can reset the window to look like it did on installation.

### **View Design thumbnails**

If you have a lot of designs to scroll through, it may be faster if the icons are smaller. Or if you don't know where your reading glasses are, maybe the larger icons will be easier to see.

### **View 3D**

Sometimes you want to see the thread texture of the design. This is done with the 3D view.

### **Language**

For delivery in different parts of the world, the Ultimate Box may have language options available. Ask your dealer. If there are other languages, you'll find them on the Tools menu, under 'Language'

## **The About Box and Registration update**

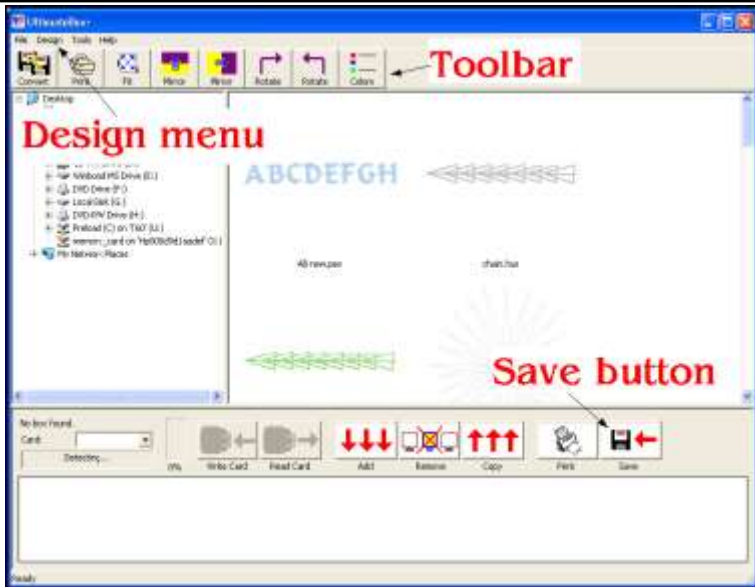
The About Box contains the copyright for the program and one other useful feature: Register.

If you have moved or changed email, you might want to update your registration with us. Clicking on the Register button takes you to a screen where you can make those changes. If you're connected to the Internet, the Ultimate Box program will send a message to us with the updated information.

Privacy Notice: We respect your privacy! We don't sell your information to anyone. That has happened to us and we didn't like it.

## **The Ultimate Box PLUS Program Interface additions:**

The Ultimate Box PLUS program, available for purchase with the Ultimate Box or as an upgrade, contains additional user items:



## The Toolbar

The toolbar allows additional features to become available.

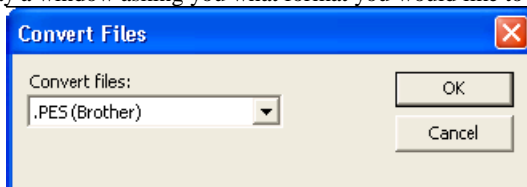
## Convert



Convert

- You can save designs as different file types. To use it, select some designs that you want to convert. Then click the 'Convert' button.

This will display a window asking you what format you would like to convert into:



Select the format in the box, then click, 'OK'. Your designs are now converted, and exist in the same folder or .ZIP where the original design is.

**Note!!!** If the design currently exists in the 'Convert' format, a new design will be made with a (2), (3), etc. in the filename.

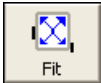
## Print



Print

- Print full size templates from any designs in view, without adding them to the card area. Simply select the designs and click 'Print'.

## Fit Automatically



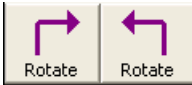
- If you want to make a design smaller so that it will fit in your hoop, click 'Fit'. This will reduce the size (and stitch count!) of designs to fit in your hoop. The 'hoop' size is what you've set in the card preferences for the currently inserted card. You will need to have a card inserted for this to work.

## Mirror



- Create a reverse or 'mirror-image' of the designs.

## Rotate



- Turn the designs to better fit a hoop.

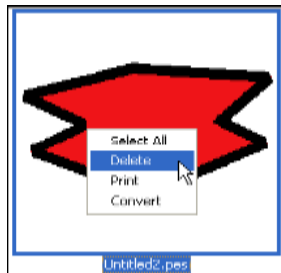
## Colors



- View the colors on any design you hover the mouse over:

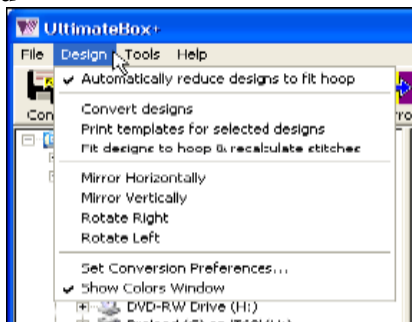


## The pop-up menu



This allows convenient right-click commands to select, delete, print and convert designs.

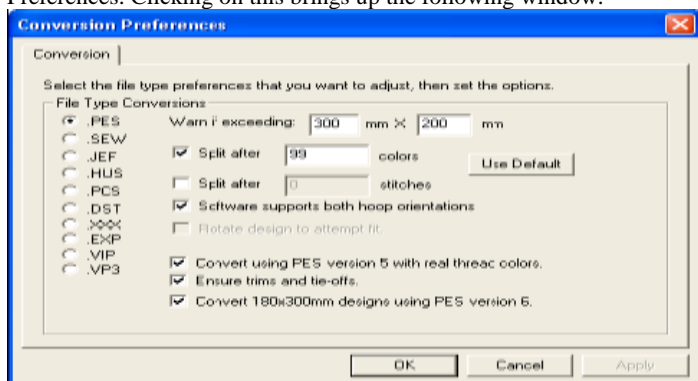
## The Design Menu



If you have checked, 'Automatically reduce designs to fit hoop' then when you add designs to the Card Area, they will be resized if they are too large. When resizing is done, the stitches are recalculated so that correct density is maintained.

## Conversion Preferences

The other options duplicate the Toolbar buttons, with the exception of Set Conversion Preferences. Clicking on this brings up the following window:



The controls in this window affect the output of your conversions.

The first thing to know is that, "If you don't know, don't touch."

The second thing is that if you've made changes and aren't sure about them, you can always click the 'Use Default' button.

### The controls are as follows:

- The radio buttons on the left select the format that you're adjusting. For instance, click on PES to adjust the PES conversion preferences.
- **'Warn if exceeding'** will direct the program not to convert if the file is too big for the new format.

- **'Split After'** will break a file into two or more files. This is done if the file has too many stitches or colors. This is required to accommodate some older machines or formats. To stitch the full design, simply sew the split files one right after the other.
- **'Software supports both hoop orientations'** will allow the design to be rotated inside the file if needed. Not all versions of software for a given format will understand the file if it is rotated. If you don't use OEM machine software, leave this option on.
- **'Rotate design to attempt to fit'** if you don't have the software check above on, this will try saving a larger design into the format by rotating it. Many hoops are not square and few designs are, so rotating can allow a bigger file to be saved. The only drawback is that it will sew sideways.

### **Other Options:**

- **'Convert PES version 5'** allows the file to contain thread color information from many brands. If you use PE-Design or Palette versions 1-4, you may not want this option, as your software will not read the design.
- **'Ensure trims and tie-offs'** allows for the fact that on some machines with automatic trimmers, you can force the trim to cycle on jump stitches.
- **'Convert 180x300 designs'** allows for a special hoop in PES, and requires a PES version 6 file to be written.

## **Troubleshooting**

### **Card Reader / Writer Box is not found by Software:**

Power is supplied to the Card Reader / Writer box via the USB connection.

If the box is connected to a USB hub, be sure that the hub has its own power source or the box may not have enough power to operate correctly.

Re-plug the USB cables making sure they are firmly attached then try again.

### **If during Read/Write procedure an error message appears:**

Close the Card Reader/ Writer software and restart the Reader / Writer box by re-plugging the USB cables making sure they are firmly attached then try again. If the problem persists, contact your dealer or the manufacturer.

### **Sometimes the box will appear to work, but will fail during a read or write:**

This has happened to us and a bad cable was found to be the culprit.

### **My Box is connected, but the buttons to read and write are grayed out:**

If there is no card, or a defective card, the buttons will become disabled, indicated by a gray state. Double check that the card is inserted all the way.

## **Warranty**

This product is covered by a Limited\* One Year Warranty.

\*Box and Card Connector defects are not covered by the warranty. Service/repair charge may apply.

---

## **Technical Support**

Full Technical Support for the operation of the Ultimate Box is provided by Vikant Corporation via e-Mail at [\*\*service@vikant.com\*\*](mailto:service@vikant.com)

You can also call us at **888-760-8554 X 203, 847-919-9400 X 203**  
or Fax to 847-808-9803

**Vikant Corporation  
6577 Windham Lane  
Long Grove, IL 60047**