



**St. Leo  
Catholic Church**

Twenty-eighth  
Sunday in Ordinary  
Time

October 12-13, 2019

P.O. Box 93, 2109 Sulphur Springs Rd, Inwood WV 25428 (304)229-8945



## 28<sup>th</sup> SUNDAY IN ORDINARY TIME

Jesus said in reply, "Ten were cleansed, were they not? Where are the other nine? Has none but this foreigner returned to give thanks to God?" - Lk 17:17-18

©LPI

Excerpts from the Lectionary for Mass ©2001, 1998, 1970 CCD.

PASTOR: Fr. Alfred Obiudu  
DEACON: Rev. Mr. Brian Crim  
MASS TIMES-Saturday-5:00PM  
Sunday-9:00AM, 12:00PM

CONNECT:  
On-line: [Stleo.com](http://Stleo.com)  
Facebook: <https://www.facebook.com/stleoinwoodwv>  
Twitter : @stleoinwood  
Email: [Secretary@stleo.com](mailto:Secretary@stleo.com)  
Mail :P.O. Box 93, Inwood WV 25428

## Saturday, October 12

10:00am Homeless Ministry meeting

4:30pm Confession

5:00pm The People of the Parish

6:00pm Flu Clinic (in parish office)

Readings: Jl 4:12-21/Ps 97:1-2, 5-6, 11-12/Lk 11:27-28

## Sunday, October 13

9:00am +Diane Grimes by Mickey Dorsey

10:15am Faith Formation/RCIA classes

12:00pm +Grace Pankow by Bill Pankow

+Joseph Alampi by Elaine Alampi

Readings: 2 Kgs 5:14-17/Ps 98:1, 2-3, 3-4 [cf. 2b]/2 Tm 2:8-13/  
Lk 17:11-19

## Monday, October 14

8:30am +Mary Lou Cox by Patti Lord

Readings: Rom 1:1-7/Ps 98:1, 2-3ab, 3cd-4 [2a]/Lk 11:29-32

## Tuesday, October 15

11:00am Legion of Mary

5:00pm Bingo

Readings: Rom 1:16-25/Ps 19:2-3, 4-5 [2a]/Lk 11:37-41

## Wednesday, October 16

6:30pm Boy Scouts

6:30pm Confession

7:00pm The People of the Parish

Readings: Rom 2:1-11/Ps 62:2-3, 6-7, 9 [13b]/Lk 11:42-46

## Thursday, October 17

12:00pm +Sallie Stewart by Jim and Joan Kee

Readings: Rom 3:21-30/Ps 130:1b-2, 3-4, 5-6ab [7]/Lk 11:47-54

## Friday, October 18

12:00pm +Eddy Newcome by Steve and Sharolyn Smith

Readings: 2 Tm 4:10-17b/Ps 145:10-11, 12-13, 17-18 [12]/Lk 10:1-9

## Saturday, October 19

4:30pm Confession

5:00pm +Alice Brown by Dugald Brown & family

Readings: Rom 4:13, 16-18/Ps 105:6-7, 8-9  
42-43 [8a]/Lk 12:8-12

## Sunday, October 20

9:00am Clelia LaMonica by Mike & Connie Groves

10:15am Faith Formation/RCIA classes

12:00pm +Becky French Mikel by The McKinney family

Readings: Ex 17:8-13/Ps 121:1-2, 3-4, 5-6, 7-8, [cf. 2]  
/2 Tm 3:14—4:2/Lk 18:1-8

## COLLECTIONS

General (first collection used for operating expenses) \$3266.31

Debt Reduction (second collection used to pay the mortgage) \$3089.09

Youth Fund-\$4.00

Pantry Fund-\$25.00

On-line donations \$3467.50(\$2409.50/general; \$1033.00/debt; \$25.00/Catholic University)

Mission collection-\$2218.92

Thank you for your generosity and God Bless you!

Next weekend there will be Anointing of the Sick after all the Masses.

There will be a second collection next weekend for World Mission Sunday. Funds from this collection will support priests, religious Brothers and Sisters, and lay catechists that work in Catholic missions worldwide.

## ATTENDANCE

Saturday 5:00PM-83

Sunday 9:00AM-251

12:00PM-112

The Altar wine for the month of **October** is offered by Cleatus and Claudia Bell in memory of All the Deceased Members of St. Leo Catholic Church.

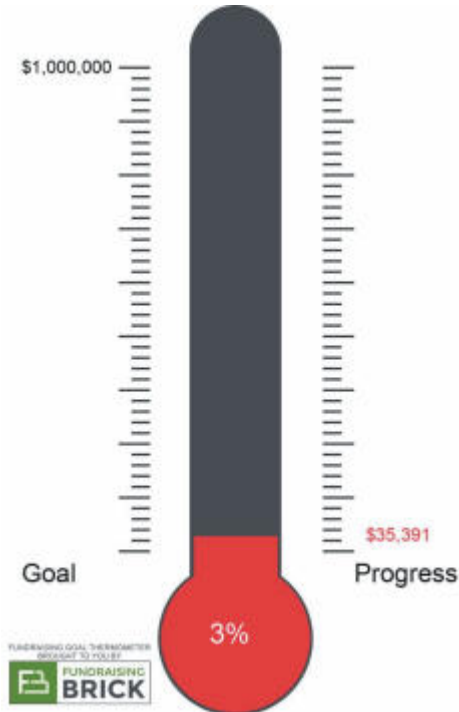
The sanctuary candles for the month of **October** are offered by Connie L. Marino in memory of Mikey.



Mark your calendars!  
St. Leo's Fall Craft Faire  
will be held on Saturday,  
October 26th from 10am-  
4pm and Sunday, October  
27th, from 10am-2pm in

our Fellowship Hall. There will be over 40 local vendors and crafters selling their wares as well as breakfast and lunch items for sale from our kitchen. This is a great way to get a jump on your Christmas list. Come shop til you drop!

We would like to thank all those that have donated recently to our Capital Campaign! Through your generosity, we have raised \$35,391.08 so far! We also received a check this week for \$13,773.48 from the Catholic Sharing Appeal, which represents the latter half of our goal that comes back to our parish.



Thank you for your continuing generosity and God Bless you!

If you have not yet donated to our Capital Campaign, there is information on the back table in the Narthex as well as donation envelopes. You can also choose to donate online as well-visit our website at [www.stleo.com](http://www.stleo.com) and click on the Donate button.

The St. Leo Cemetery now has a gate across the road leading back into the cemetery. The gate has been programmed to automatically open and close at the following times:  
7:00 AM (open) - 6:00 PM (close)  
October through March.  
7:00 AM (open) - 8:00 PM (close)  
April through September.



The Knights of Columbus Ladies Auxiliary will be holding a membership drive on Oct. 20, 2019, in the Fellowship Hall, in conjunction with the Knights of Columbus. All ladies of

the Parish who are wives, widows, daughters, sisters, and mothers of Knights are eligible to join. Ladies not having an immediate connection to a Knight as listed are encouraged to join as social members through the sponsorship of a qualified member.

Brother Wayne Minghini was selected as the Knights of Columbus "Knight of the Month". Brother Wayne was selected for his many contributions to our Parish and the Knights of Columbus. Thank you for a job well done - Congratulations

The Knights of Columbus is hosting a Membership Drive in the Fellowship Hall after both Masses on October 20, 2019. All Catholic gentlemen starting at the age of 17 1/2 are welcome to attend. Guest speakers will be available to discuss many aspects of being a Knight and the many good works the Knights perform for the Church and the community. Please contact Grand Knight Greg Hilleary at 304.274.9890 if you have any questions or will be attending.

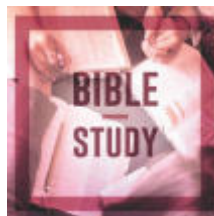
#### KNIGHTS OF COLUMBUS COATS FOR KIDS PROGRAM

Every year families in our community struggle to meet their most basic needs and cannot always afford winter coats for their deserving children during the cold winter months. St. Leo Knights of Columbus is asking our parish to donate to our Coats for Kids program. A case of 12 winter coats costs \$240. All monies donated go to the purchase of these coats which are then distributed locally by Catholic Charities of WV in Martinsburg to children in need. Your donation is tax deductible. There will be a basket at the back of the church after each Mass during the month of October; donations can be cash or check (made payable to St. Leo KOC 10756/ notation: Coats for Kids). Last year through the generous support of St. Leo parish and the community, we were able to purchase 15 cases, a total of 180 coats, for local children in need. With your help, we hope to surpass that goal this year! Thank you for your kindness and generosity in supporting this program!



[New Bible Study: Romans: The Gospel of Salvation](#)

Paul's letter to the Romans has been at the center of reflection, conversion, and controversy from the very beginning. Romans: The Gospel of Salvation is a new eight-week Bible study we are offering that will help you make sense of the difficult passages regarding faith, works of the law, and justification. It will give you an authentically Catholic, comprehensive, and simple way to understand this challenging epistle. The Wednesday Night Bible Study Group will begin Romans on October 30, 2019 at 6:30 PM. Participants will meet every week to view an engaging video presentation by Dr. Andrew Swafford and Jeff Cavins, followed by a time of lively group discussion and fellowship. For more information or to register contact the parish office 304-229-8945 or Nettie Atkinson 304-839-6783.



[Please Pray For Our Military](#)  
 Sgt. Christopher Woynicz, Ft. Bragg, NC  
 Ryan Toelle, Army, Ft. Sam Houston, San Antonio, TX  
 Cpt. Philip Allen, Marines, deployed  
 Mason Willett, Army  
 Lari Bittinger, Air Force,  
 Zane Craighead, Marines,  
 Ryan Christopher Walker, Navy  
 Joshua Tristan Walker, Navy  
 Conor Clapsaddle, Coast Guard  
 John Posadas, Army  
 Lt. Melanie Arehart, Army, deployed  
 Valerie Herndon, Navy

Fr. Alfred will be leading a religious pilgrimage to Greece & the Greek Isles (with 206 Tours out of Hauppauge, NY) beginning October 9 through 19, 2020. The pilgrimage is open for anyone, Catholic and non-Catholic, who is interested in exploring Greece & the Greek Isles, following the footsteps of St. Paul, the Great Apostle of the Gentiles. Interested in going on the pilgrimage or have any questions, Fr. Alfred can be reached at [FrAlfred@stleo.com](mailto:FrAlfred@stleo.com) or 304-229-8945.

Do you have a family member or friend currently serving? Please let us know. Call the office at 304-229-8945 or email [secretary@stleo.com](mailto:secretary@stleo.com).



The 21st Annual Fan the Fire Youth Rally will be held in Pennsylvania on Saturday, November 16th from 9:30am to 8:00pm. Anyone interested in attending should contact Michele Bui ([familylife@stleo.com](mailto:familylife@stleo.com)) ASAP!

Early Bird registration reduces the cost to \$20 per person (plus a small fee for gas)! Teens may still sign up after October 13, but the cost will be \$25 (before November 1) or \$30 (after November 1).

Payment will be due by **October 13** for Early Bird Registrations!

Parents are also needed for transportation (contact Michele Bui for more information).



**Liturgical Ministers for October 19-20, 2019**

Team #13 (5:00)		Team #14 (9:00)		Team #15 (12:00)	
<b>Lector</b>	Fay Smith	<b>Lector</b>	Anne Dewey-Balzhiser	<b>Lector</b>	John Woynicz
					Chris Willett
<b>Euch. Min.</b>	Bernie Natreba	<b>Euch. Min.</b>	Jim Rand	<b>Euch. Min.</b>	Claudia Bell
	Harry Wilkins		Joe Ash		Elaine Alampi
	Helen Wilkins		Vince Chirichella		Khoat Bui
	Jeanne Zirk		Jane Chirichella		Dennis Allen
	Ike Betts				

October is Breast Cancer Awareness Month -



Breast cancer is one of the most common kinds of cancer in women after skin cancer. About 1 in 8 women born today in the United States will get breast cancer at some point. The good news is that most women can survive breast cancer if it's found and treated early. Breast cancer also occurs in men, but is very rare. Approximately 2,670 American men will learn they have breast cancer in 2019, the American Cancer Society estimates. Male breast cancer accounts for 1 percent of all breast cancer diagnoses.

Breast cancer starts when cells in the breast begin to grow out of control. These cells usually form a tumor that can often be seen on an x-ray or felt as a lump. The tumor is malignant (cancer) if the cells can grow into (invade) surrounding tissues or spread (metastasize) to distant areas of the body.

Breast cancer symptoms: A lump, mass and change in the feel or position of the breast are among the most common symptoms of breast cancer. Other symptoms include:

- Swelling, redness or inflammation
- Changes in the nipple
- Nipple discharge
- Pain in the breast
- Itchy or irritated breasts
- Changes in color
- Peeling or flaky skin



**Aging:** On average, women over 60 are more likely to be diagnosed with breast cancer. Only about 10 percent to 15 percent of breast cancers occur in women younger than 45. However, this may vary for different races or ethnicities.

**Gender:** Although nearly 2,000 men will be diagnosed with breast cancer each year, breast cancer is 100 times more common in women. The National Cancer Institute estimates that more than 190,000 women will be diagnosed with breast cancer annually.

**Family history:** Having a family history of breast cancer, particularly women with a mother, sister or daughter who has or had breast cancer, may double the risk.

**Inherited factors:** Some inherited genetic mutations may increase your breast cancer risks. Mutations in the BRCA1 and BRCA2 genes are the most common inherited causes.

If you are a woman age 40 to 49, talk with your doctor about when to start getting mammograms and how often to get them. If you are a woman age 50 to 74, be sure to get a mammogram every 2 years. You may also choose to get them more often.

Talk to a doctor about your risk for breast cancer, especially if a close family member of yours had breast or ovarian cancer. Your doctor can help you decide when and how often to get mammograms.

*Resources: American Cancer Society; National Cancer Foundation, Inc; Cancer Treatment Centers of America*

Week #1		Week #2		Week #3	
Anne Marie Gawarkiewicz	Betty Fries	Daniel Mulhearn	Pat Shelly Jencks	Brenda Desmond	Betty Hunt
Jay Imperatrice	Tim Acker	Anthony Imperatrice	Pat Whitacre	Bob Huffman	Sue Belger
Becky Dobaczewski	Carla Hopkins	Blanche Blanchette	Jim & Joan Kee	Mercedes Rosenkranz	Jeanne Zirk
Regina McCormick	Elise Anderson	Maureen O'Donnell	Carla Brannon	Terry Antonacci	
Marianne Bere	Amy Hatfield	Linda Packard	Gayle Keenan	Tom & Genie Tobin	
Shirley Cadigan	Lois Gargano	Pat Baginski	Steve Sims	Mary Beth Parsons	
John Mollica	Joe Mauk III	Carmen McLeaf	Carrie Sowers	Merle Betts, Sr.	
Jean Burkhart	Rosemary Hall	Alice Cooke	Linda Fritze	Patty Caudell	
Mark Woynicz	Karlee Desmond	Robert Nearchos	Connie Marino	Grace Serraglia	
Stacy Huffman and family	Bill Frank	Jim Gress	Lisa Reed	Ralph Imperatrice	
Manny & Rebecca Alvarez		Gary Gore	Dina Cirone	Paul & Elaine Henke	
Tyler & Rachel Hansburger & family		Ann Carran Earl Houlihan	Les Gallipo	Nancy Eagan	

# Pill & Pill

Attorneys-At-Law



304-263-4971

Martinsburg



## WE'RE HIRING AD SALES EXECUTIVES



- Full Time Position with Benefits
- Sales Experience Preferred
- Paid Training
- Overnight Travel Required
- Expense Reimbursement

CONTACT US AT  
[careers@4LPi.com](mailto:careers@4LPi.com)  
[www.4LPi.com/careers](http://www.4LPi.com/careers)

## PROTECTING SENIORS NATIONWIDE MEDICAL ALERT SYSTEM



# \$29.95/MO

BILLED QUARTERLY

PLUS  
SPECIAL  
OFFER

CALL NOW! 1.877.801.7772

[WWW.24-7MEDALARM.COM](http://WWW.24-7MEDALARM.COM)

AVAILABLE  
FOR A LIMITED TIME

## ADVERTISE YOUR BUSINESS HERE

Contact **Michael Ficznar** to place an ad today!  
[mficznar@4LPi.com](mailto:mficznar@4LPi.com) or (800) 477-4574 x6452

Eackles - Spencer & Norton  
Funeral Home



Traditional, Pre-Arrangement  
& Cremation Offered

Charles Town - Harpers Ferry, WV

Robert Spencer LIC.

Alan H. Norton lic.

Phone: 304.724.6500

[www.eackles-spencerfuneralhome.com](http://www.eackles-spencerfuneralhome.com)



Life is full of choices.  
Home health care is no different.

If you're recovering  
from surgery, illness,  
or an accident, **ask for**  
**Panhandle Home Health.**  
Most insurances accepted.

**PANHANDLE**  
HOME HEALTH, INC.

304-263-5680 / 800-397-7444

[PanhandleHomeHealth.org](http://PanhandleHomeHealth.org)

See What's  
in Store!

JEWELRY • ROSARIES  
BOOKS  
AND MORE



[www.parishstore.com](http://www.parishstore.com)

## The Dining Room

COOKED & BAKED  
FROM SCRATCH  
Daily Specials

304-229-7510

Tru Apple Way

Hours: Mon & Tues

6am-3pm

Wed-Sat 6am-8pm

## MERCEDES PROHASKA REALTOR®

(304) 724-2000 x1607 Office

(304) 264-1832 Cell

(304) 513-1230 Direct Phone + Fax

[MercedesProhaska@PremierMove.com](mailto:MercedesProhaska@PremierMove.com)

[www.PremierMove.com](http://www.PremierMove.com)



PREMIER



I will donate 5% of any sale  
made from St. Leo's member  
toward St. Leo's mortgage!

116 E. German St./P.O. Box 3328,  
Shepherdstown, WV  
Independently owned and operated.

## Center for Orthopedic Excellence

1008 Tavern Rd. • Ste #102  
Martinsburg

304-263-5129



3-D-4-2

For ad info. call 1-800-477-4574 • [www.4lpi.com](http://www.4lpi.com)

14-0796/i



**kw** EASTERN  
PANHANDLE  
KELLERWILLIAMS

**Vimi Walker**

Realtor® MRP  
Cell: 304-266-8989  
Office: 304-901-4886  
vimwalker@kw.com  
www.vimisellshomeswv.com

105 Tavern Rd, Ste 1  
Martinsburg, WV 25401  
Jay Deeds, WV, VA, MD & PA Broker



**BERKELEY  
GLASS**

COMMERCIAL  
& RESIDENTIAL

P: 304.267.GLAS

www.berkeley-glass.com

412 W. Race St.  
Martinsburg, WV

**NEVER MISS A BULLETIN !**

Sign up to have our weekly parish bulletin  
emailed to you at [www.parishesonline.com](http://www.parishesonline.com)



*Home  
Helpers*

**Trusted In-Home Care**

Live life your way! From a few  
hours to 24/7 care, we're there  
when and where you need us.

**304-433-8000 or 540-771-2555**

300 Foxcroft Ave., Suite 100-B3, Martinsburg  
Serving the Eastern Panhandle of WV  
& parts of Fred. & Clarke Co. in VA

[www.HomeHelpersHomeCare.com/Panhandle](http://www.HomeHelpersHomeCare.com/Panhandle)

Each office is independently owned & operated.



Since 1830  
Robert C. Fields, LLC

**Brown  
Funeral Homes  
& Cremations**

*Robert C. Fields and Sons*

CALL STEVE HEDGES  
for Guaranteed Pre-Arrangements

Martinsburg • Charles Town  
Inwood • Ranson

**304-263-8896**

[BrownFuneralHomesWV.com](http://BrownFuneralHomesWV.com)

**DANIEL  
LEONARD**

**"The Masonry Specialist"**

3rd Generation

— Call For A Free Estimate —

**Brick-Block-Stone**

Cell: **304-283-3873**

WV011001

**Briarwood**  
Dental Center

Jay S. Boyd, D.D.S.  
C. Greg Stephen-Hassard, D.D.S.

1003 Sushruta Drive  
Martinsburg, WV

**304.263.3367**

[www.briarwooddentalcenter.com](http://www.briarwooddentalcenter.com)



**ST. LEO**

**KNIGHTS OF COLUMBUS**

Inwood Council #10756

**Meeting**

**1st Thursday at 7:00 pm**

"We invite all Catholic men,  
in good standing with the  
Church to join our Council  
and our work."

**F. SAMUEL BYRER**  
Lawyer

*Law office of*

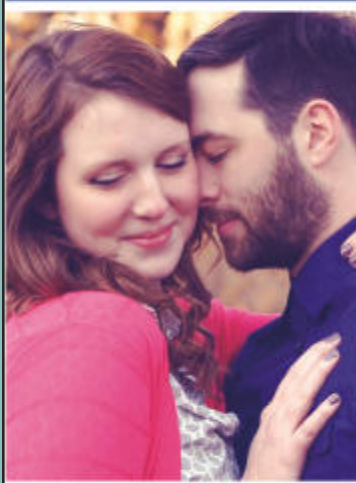
*F. Samuel Byrer, PLLC*

**(304) 724-7228**

[byrerlawofc@frontiernet.net](mailto:byrerlawofc@frontiernet.net)

**catholicmatch**

West Virginia



[CatholicMatch.com/WV](http://CatholicMatch.com/WV)



**ONLINE  
GIVING**  
By WeShare

**St. Leo Catholic Church**

<https://stleowv.weshareonline.org>



What does OCTOBER mean to you?? To name a few reasons for love of this month maybe it is the cool, crisp weather, football, the World Series, carving pumpkins, the fall foliage, and fall festivals. Remember as you are enjoying this wonderful month, that October is dedicated to Our Lady of the Holy Rosary. It is also in this month that many people experienced the Miracle of the Sun at Fatima. The rosary is a major way to go to Mary so that she intercedes on your behalf to Jesus. Mary loves hearing from you in your daily praying of the rosary because she understands you and your needs. Many Catholics take Mary for granted. She loves Jesus so deeply and has great faith in Him. We have received answers to many of our prayers through Mary. Let us remember Mary throughout the month of October especially as we enjoy loving life during this spectacular month.



For questions about the Legion of Mary contact Khoat Bui @ (304) 596-3420.

The Diocese of Wheeling-Charleston is committed to the protection of its children and young people. The Diocese complies with the United States Conference of Catholic Bishops' Charter for the Protection of Children and Young People by maintaining an Office of Safe Environment. To report an incidence of suspected child sexual abuse, please contact your local law enforcement agency, or you may confidentially contact the West Virginia Bureau for Children and Families/Child Protective Services by calling the Child Abuse Hotline at 800.352.6513. To report suspected cases of sexual abuse by personnel of the Diocese of Wheeling-Charleston to the Diocese, please contact one of the Bishop's designees at 888.434.6237 (toll free) or 304.233.0880: Sister Ellen Dunn, ext. 264; Mr. Bryan Minor, ext. 263; Mr. Tim Bishop, ext. 353; Fr. Dennis Schuelkens, ext. 270 or call the Office of Safe Environment at 304.230.1504. For more information on the Diocese's Office of Safe Environment, please go to [www.dwc.org](http://www.dwc.org), then click the "Diocese" tab, then click "Office of Safe Environment" under the "Offices" menu. To learn more about the Catholic Church's efforts in preventing sexual abuse of children in the United States, please visit <http://www.usccb.org>. Under "Issues and Action," click "Child and Youth Protection" from the drop down menu.

Office: 304-229-8945 Rectory: 304-229-5994

Office Hours Mon-Thurs 9am-4pm /Friday 9am-3pm

Website: [www.stleo.com](http://www.stleo.com)

Pastor.....Fr. Alfred Obiudu  
[FrAlfred@stleo.com](mailto:FrAlfred@stleo.com)

Clergy Associate.....Deacon Brian Crim  
[deaconbrian@stleo.com](mailto:deaconbrian@stleo.com)

Music Director.....Ross Semler  
[music@stleo.com](mailto:music@stleo.com)

Secretary..... Lisa Feeley  
[secretary@stleo.com](mailto:secretary@stleo.com)

Business.....Joseph Ash  
[business@stleo.com](mailto:business@stleo.com)

Faith Formation /Family Life Coordinator.....  
Michele Bui [familylife@stleo.com](mailto:familylife@stleo.com)

Custodian.....Russell Harp  
[building@stleo.com](mailto:building@stleo.com)

Housekeeper.....JoAnne Muia

RCIA .....Deacon Brian Crim  
[deaconbrian@stleo.com](mailto:deaconbrian@stleo.com)

Marriage Preparation.....Larry & Shirley Slebodnick  
304-725-2449, [marriageprep@stleo.com](mailto:marriageprep@stleo.com)

Religious Goods Store.....Martha Parrish  
304-229-3150

Parish Nurse.....Claudia Bell  
[parishnurse@stleo.com](mailto:parishnurse@stleo.com)

Knights of Columbus.....Gregory Hilleary  
304-702-3216, [gh2010@aol.com](mailto:gh2010@aol.com)

Parish Council.....Sheri Lincecum, president  
[brighteyes195005@gmail.com](mailto:brighteyes195005@gmail.com)

Finance Council.....Harry Wilkins, president  
[wilkins.ht@gmail.com](mailto:wilkins.ht@gmail.com)

