

Two Day Sale of Fine Art, Antiques & Collectables - Day 2

Wednesday 11 June 2014 10:00



The CANTERBURY AUCTION Galleries

Canterbury Auction Galleries (The)
40 Station Road West
Canterbury
Kent
CT2 8AN



Lot: 1110

Three 18th Century Chinese "Famille Rose" porcelain plates decorated with cockerels on rockwork with chrysanthemums, 9ins (229mm) diameter
Estimate: £120.00 - £160.00



Lot: 1116

A Japanese carved ivory Okimono of four feuding men, 4.75ins (121mm) high, (Meiji period - one arm broken and repaired and slight chipped)
Estimate: £100.00 - £150.00



Lot: 1111

A 19th Century Chinese porcelain "Famille Noir" square vase painted with prunus and stylised rockwork, 18.5ins (470mm) high (four character mark in blue), and a black glazed porcelain baluster shaped vase painted with stylised floral motifs in mauve and turquoise within formal borders, 17.5ins (445mm) high
Estimate: £300.00 - £500.00



Lot: 1119

A Chinese silvery metal belt, the double linked circular panels with Chinese ciphers, 720mm x 45mm overall (early 20th Century - gross weight 5ozs), and a Chinese silvery metal hat pin, the ball pattern finial embossed with chrysanthemums, 25mm diameter to the 22cms steel pin
Estimate: £100.00 - £150.00



Lot: 1112

A Chinese blue and white porcelain jardiniere decorated with four clawed dragons, 16ins (407mm) diameter x 13.5ins (343mm) high
Estimate: £100.00 - £150.00



Lot: 1120

Two Chinese carved wood figures of recumbent rams, 18ins (460mm) overall x 14.25ins (362mm) high (late 19th/early 20th Century)
Estimate: £300.00 - £400.00



Lot: 1113

A Japanese blue and white porcelain bulbous vase decorated with shrimps and calligraphy, 13.25ins (336mm) high, and circular hardwood stand for same (20th Century)
Estimate: £200.00 - £300.00



Lot: 1121

A Japanese faux tortoise-shell lacquer table cabinet and plain lacquer stand, 12.25ins (311mm) x 6.5ins (165mm) x 17ins (432mm) high (Meiji period)
Estimate: £200.00 - £300.00



Lot: 1114

A Japanese "Satsuma" small baluster shaped vase decorated in colours and gilt with peonies and wisteria, 6ins (152mm) high, and a similar with figures in a mountainous landscape beside a lake, 5.75ins (146mm) high (both with seal marks)
Estimate: £150.00 - £200.00



Lot: 1122

Two Chinese Han embroidered silk skirts worked in coloured threads with floral filled panels and other motifs on pink and green grounds respectively, each approximately 37ins (940mm) overall (late 19th/early 20th Century - slight damage)
Estimate: £200.00 - £300.00



Lot: 1123

Kono Bairei (1844-1895) - Pair of Japanese woodblock prints - Quail and Pheasant, 8ins (205mm) x 5.75ins (145mm), signed and with seal mark, in modern oak frames and glazed
Estimate: £100.00 - £150.00



Lot: 1124

An Indian bronze figure - "Ganesha" on his rat vahana (vehicle), on stepped rectangular base, 9ins high Note : The elephant-headed deity represents the Lord of Beginnings and both placer and remover of obstacles
Estimate: £200.00 - £300.00



Lot: 1125

A Chinese stained wood circular stand, the moulded top inset with white marble, on three splayed supports with claw pattern feet, 14ins (357mm) diameter x 20ins (508mm) high
Estimate: £100.00 - £150.00



Lot: 1126

A Chinese blackwood octofoil topped jardiniere stand with pink veined marble inset to top, the borders carved with beadwork and boldly fretted and carved leaf scroll pattern aprons, on square cabriole legs with claw and ball feet, 8ins (205mm) diameter overall x 15.5ins (398mm) high
Estimate: £300.00 - £400.00



Lot: 1127

A Chinese rosewood armchair inlaid throughout in mother of pearl with pierced and shaped crest rail, the splat fretted and carved to represent a vase and flowers, solid wood seat, on square legs (late 19th/early 20th Century)
Estimate: £600.00 - £800.00



Lot: 1130

A modern Browning model D5 trap 12 bore under and over shotgun No. 8K3RP7182 the 30ins blued barrels and open rib to top, single trigger, ejector action decorated with rose and



Lot: 1131

A modern Browning model B1 12 bore under and over shotgun No. 78919S7, the 30ins blued barrels with open top rib and single selective trigger, the box lock action engraved with rose and leaf scroll ornament, chequered walnut stock and fore end and with Browning composite butt pad, 47ins overall (choked - imp cyl and 1/2) Note : Buyers must have the appropriate Shotgun Certificate to purchase this weapon
Estimate: £1,000.00 - £1,500.00



Lot: 1132

A modern Browning .22 calibre semi automatic sporting rifle No. 146CS02102 with tube magazine, the action finely engraved with duck and pheasant hunting scenes, the 19ins blued barrel with leaf sights, chequered walnut stock and fore end, 37ins overall, complete with Browning "Custom Shop" motor case for same Note : Buyers must have the appropriate Section I Firearm Certificate to purchase this weapon
Estimate: £1,500.00 - £2,000.00



Lot: 1133

A modern Verney-Carron, St. Etienne 12 bore over and under shotgun, the 26ins barrels with double trigger and bright polished action with foliate engraving and with walnut stock and fore end, 43ins overall (choked - improved and modified) Note : Buyers must have the appropriate Shotgun Certificate to purchase this weapon
Estimate: £250.00 - £350.00



Lot: 1134

A modern 20 bore over and under shotgun by Emilio Rizzine of Italy, No. 43810, the 27ins blued barrels with ventilated top rib, foliage engraved action with side plates, and double ejector, 44ins overall (choked - full and improved) Note : Buyers must have the appropriate Shotgun Certificate to purchase this weapon
Estimate: £250.00 - £350.00

telescopic sight, 45ins Note : Buyers must have the appropriate Section I Firearms Certificate to purchase this weapon overall
Estimate: £400.00 - £600.00



Lot: 1135

A modern 12 bore under and over folding side lock ejector shotgun by Nickolson the 27.5ins blued barrels with open top rib and double trigger, under lever opening, the action etched with hunting scenes with chequered wood stock and fore end, 44.5ins overall Note : Buyers must have the appropriate Shotgun Certificate to purchase this weapon
Estimate: £150.00 - £200.00

Lot: 1139

A modern .270 calibre bolt action game rifle by Parker Hale Ltd of Birmingham, No. 16830, the 24.75ins blued barrel and bolt with chequered walnut stock and with rubber recoil pad, leather sling for same and with Hawke Faint 3-10 x 44 telescopic sight, 44.5ins overall Note : Buyers must have the appropriate Section I Firearms Certificate to purchase this weapon
Estimate: £450.00 - £500.00



Lot: 1136

A modern 12 bore under and over box lock non ejector shotgun by F. Marocchi with 26.5ins blued barrels with top rib, action decorated with game and with chequered walnut stock and fore end, 43.5ins overall Note : Buyers must have the appropriate Shotgun Certificate to purchase this weapon
Estimate: £150.00 - £200.00

Lot: 1140

A .308 calibre bolt action game rifle by the Midland Gun Company Ltd, England, with 24.5ins blued barrel and bolt, chequered walnut stock with cheek pad, leaf sights and scope mounts, 44.5ins overall Note : Buyers must have the appropriate Section I Firearms Certificate to purchase this weapon
Estimate: £200.00 - £300.00



Lot: 1137

A modern 12 bore under and over box lock shotgun by Baikal, No. H05655 the 27.5ins blued barrel with top rib, action decorated with game birds and chequered walnut stock and fore end, 44ins overall Note : Buyers must have the appropriate Shotgun Certificate to purchase this weapon
Estimate: £150.00 - £200.00

Lot: 1141

A modern .308 calibre bolt action game rifle by Parker Hale No. R-61115 the 29.5ins blued barrel with scope mount, chequered lacquered wood stock with composition butt pad, 44.5ins overall Note : Buyers must have the appropriate Section I Firearms Certificate to purchase this weapon
Estimate: £150.00 - £200.00



Lot: 1138

A modern .537 calibre bolt action game rifle by C.Z., No. 12954, the 24ins blued barrel and bolt, chequered walnut stock and with rubber recoil pad, leather sling and complete with Meopta 7 x 50

Lot: 1142

A modern .270 calibre bolt action game rifle by BSA No. BR5668 the 24.5ins blued barrel with scope rail and rings, chequered walnut stock, 44.5ins overall Note : Buyers must have the appropriate Section I Firearms Certificate to purchase this weapon
Estimate: £200.00 - £300.00





Lot: 1143

A 12 bore side by side hammer action ejector shotgun by Lincoln Jeffries, No. 2361 with 26.25ins nitro proofed Damascus barrels, double trigger, the lockplate engraved with a game hunting scene, chequered walnut stock and fore end, composite butt plate, 42.5ins overall (choked - full and full) Note : Buyers must have the appropriate Shotgun Certificate to purchase this weapon

Estimate: £500.00 - £700.00

Estimate: £2,000.00 - £3,000.00



Lot: 1147

A 12 bore side by side box lock ejector shotgun by J.P. Saur & Sohn of Suhl, with 28.25ins blued barrels, the action engraved with game and scroll work, chequered walnut stock and fore end, and with composite butt pad, 44.75ins overall Note : Buyers must have the appropriate Shotgun Certificate to purchase this weapon

Estimate: £300.00 - £500.00



Lot: 1144

A 12 bore side by side hammer action ejector shotgun by P. Bozard of New Bond Street, London, No. 8419, the 30ins blued barrels (nitro proofed and re-sleeved) the action engraved with rose and leaf scroll ornament, blued hammers and with walnut stock and fore end with chequered grip, and with composite butt pad, 47ins overall (choked - imp cyl and 3/4) Note : Buyers must have the appropriate Shotgun Certificate to purchase this weapon

Estimate: £500.00 - £700.00



Lot: 1148

A 12 bore side by side box lock ejector double barrelled shotgun by Cogswell & Harrison No. 425621 with 28ins blued barrels (re-sleeved), double trigger, action engraved with scroll work and with chequered walnut stock and fore end, composite butt pad, 45ins overall Note : Buyers must have the appropriate Shotgun Certificate to purchase this weapon

Estimate: £200.00 - £300.00



Lot: 1145

A 12 bore side by side hammer action shotgun by Boss & Co, No. 2617 with 28ins blued nitro proofed barrels (re-sleeved), double trigger guard and engraved lockplate and hammers, figured walnut stock and fore end with chequered grip and with composite butt pad, 45.5ins overall (choked - 1/4 and 1/2) Note : Buyers must have the appropriate Shotgun Certificate to purchase this weapon

Estimate: £3,000.00 - £4,000.00



Lot: 1149

A modern 12 bore side by side shotgun by Henry Atkin (formerly of Purdey's) No. 742 with 28ins blued barrels with single trigger, the side lock ejector action finely engraved with rose and tight scroll decoration, figured walnut stock and fore end with chequered grip, 46ins overall (choked - 1/4 and 1/2 - No. 2 gun of pair) Note : Buyers must have the appropriate Shotgun Certificate to purchase this weapon

Estimate: £5,000.00 - £7,000.00



Lot: 1146

A 12 bore side by side shotgun by Leech & Sons, Chelmsford, No. 3869, with 26ins blued barrels, double trigger, side lock ejector action engraved with scroll work, figured walnut stock and fore end with chequered grip, 43.5ins overall (choked - imp cyl and 1/2) Note : Buyers must have the appropriate Shotgun Certificate to purchase this weapon



Lot: 1150

A fine modern 20 bore side by side shotgun by Holland & Holland "The 1985 Sesquicentennial Royal Model", No. 40773 (made 1985) the 27ins blued barrels with double trigger, detachable side lock ejector action finely engraved with scroll ornament and figured walnut stock and fore end with chequered grip and the butt inset with gold coloured metal escutcheon and leather covered

butt pad, 44.5ins overall (choked imp cyl and 1/2) complete with Holland & Holland brown hide fitted motor case complete with cleaning rod, oil bottle, key and other accessories, and with canvas and leather bound outer case Note : Buyers must have the appropriate Shotgun Certificate to purchase this weapon
 Estimate: £20,000.00 - £25,000.00



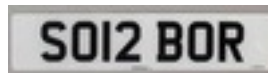
Lot: 1154
 A good quality Ostrich leather gun bag with green leather trimmings and contrasting stitching, the suede interior with three varying sized compartments, 33ins x 8ins, and a matching cartridge bag
 Estimate: £400.00 - £600.00



Lot: 1151
 A modern 12 bore side by side box lock ejector shotgun by Webley Scott, No. 137676 with 28ins blued barrels and with double trigger, action engraved with scroll work and case hardened and with walnut stock and fore end with chequered grips, 44.75ins overall (choked - 1/4 and full), complete with brown hide covered fitted motor case with accessories Note : Buyers must have the appropriate Shotgun Certificate to purchase this weapon
 Estimate: £1,500.00 - £2,000.00



Lot: 1155
 A personalised number plate of shooting interest - Registration No. S16 BOR Note : Held on DVLA retention certificate and will be transferred to purchaser at vendor's expense
 Estimate: £1,500.00 - £2,000.00



Lot: 1156
 A personalised number plate of shooting interest - Registration No. SO12 BOR Note : Held on DVLA retention certificate and will be transferred to purchaser at vendor's expense
 Estimate: £2,500.00 - £3,000.00



Lot: 1152
 A deactivated .22 calibre six shot pistol by Webley & Scott of Birmingham, No. 16156, with 6ins barrel and chequered composition grip, 11.25ins overall Note : Complete with Deactivation Certificate from the Birmingham Gun Barrel Proof House, No. 111415 dated 13th May 2013
 Estimate: £300.00 - £400.00



Lot: 1165
 A 19th Century .70 calibre percussion cap single barrel sporting gun with Damascus 29ins steel barrel and walnut stock with brass mounts, 45ins overall
 Estimate: £150.00 - £200.00



Lot: 1153
 A modern reproduction black powder percussion single shot muzzle loading pistol, the 9mm rifled barrel 8ins overall with hardwood fluted grip, 13ins overall Note : Buyers must have the appropriate Section I Firearms Certificate to purchase this weapon
 Estimate: £120.00 - £150.00



Lot: 1166
 A short .60 calibre percussion musket in carbine style with unusual "Schnabel" style stock and fore end, chequered pistol grip stamped "1882 SBIR" and "1756", the 21.5ins barrel stamped "149" and "M.P.R.T.M., VI 33 65" with plain lock (ramrod missing)
 Estimate: £200.00 - £250.00



Lot: 1167
 An Indian .60 calibre percussion two band "Enfield" musket with 34ins un-stamped blued barrel, plain lock with iron trigger guard, wood stock in military style fitted with steel butt plate, the stock stamped "634" (ramrod present)

Estimate: £180.00 - £220.00



Lot: 1168

A flintlock pistol, the 11.25ins barrel (with French proof marks) and walnut stock with William IV "Tower" lockplate, steel trigger guard and brass pommel, 17.75ins overall Note : Assembled from old parts Estimate: £80.00 - £120.00



Lot: 1174

A U.S. Cavalry sabre by Ames of Chicopee, Massachusetts, the 34ins blade stamped "U.S. ADK 1862", and "Ames MFG CO. Chicopee, Mass" to reverse, with brass guard stamped "2079", wire bound hilt and metal scabbard Estimate: £300.00 - £400.00



Lot: 1169

A 19th Century sword stick of Eastern style, the 29ins blade with bamboo hilt and carved horn handle, in hardwood cane, 37ins (overall), and a two piece wooden flail, 74ins overall Estimate: £120.00 - £150.00



Lot: 1175

A 19th Century Indian Talwar sabre with 28.5ins blade and steel grip engraved with Indian characters, and with leather scabbard Estimate: £80.00 - £100.00



Lot: 1170

An 18th/19th Century Indo Persian horseman's axe, the axe head with engraved decoration and spike, 32ins, and an Indo Persian short sword, the 25ins blade with hardwood grip with applied repousse decoration, 31ins overall Estimate: £140.00 - £160.00



Lot: 1176

A British 1859 pattern Naval cutlass bayonet for use on the 1858 Enfield Naval rifle, the 27ins blade stamped "BM" and crown over S8 (Soligen inspection mark), with composite grips to cutlass hilt and in original leather scabbard with steel fittings Estimate: £300.00 - £400.00



Lot: 1171

A 1927 pattern English bayonet, the 22.5ins blade stamped with "War Department" mark and crown over "E27", an English Camel Corps bayonet, the 22.5ins blade stamped twice with crown over "M" and two other bayonets, various Estimate: £100.00 - £150.00



Lot: 1179

A military leather covered swagger stick, the 12ins square section blade marked with a board arrow, 21.25ins long (overall), and a military leather covered swagger stick, 24ins long Estimate: £120.00 - £140.00



Lot: 1172

A George V Officer's dress sword, the 32.5ins steel blade engraved with the Royal Arms and cipher for George V together with maker's name - J.G. Plumb of 117 Victoria Street, Westminster, with leather scabbard, 39.25ins overall, and another similar Estimate: £150.00 - £200.00



Lot: 1180

A 19th/20th Century chip carved Australian aboriginal boomerang, 20.5ins overall, and an African hardwood root club with twisted metal wire to grip and collar, 24.25ins overall (possibly Zulu - polished) Estimate: £150.00 - £200.00



Lot: 1181

A 19th Century brass powder flask with repousse decoration to each side of a Highlander with a gun and a dog, 6.75ins, a leather and steel shot flask, 7.75ins, and a similar leather and brass example, 8.5ins
Estimate: £120.00 - £150.00



Lot: 1188

An Ashanti carved wood fertility doll, Ghana, West Africa, 13ins high, with two similar (20th Century - all on later wooden stands)
Estimate: £80.00 - £120.00



Lot: 1183

A 20th Century military mace with engraved brass head surmounted by a white metal crown, 52.75ins, and a military walking stick, the wood with crowned "GR" cipher, 34.25ins
Estimate: £100.00 - £150.00



Lot: 1189

A late 19th Century Fijian hardwood "Cannibal Fork" (Cula Ni Bokola) with chip carving to handle and knob, 12.75ins (one tine split) Provenance : The vendor purchased this artefact from an elderly lady whose great aunt's father collected it possibly from Fiji, certainly no later than the early 20th Century
Estimate: £800.00 - £1,200.00



Lot: 1184

A Victorian polished steel full set of armor of Medieval Italian design, the plates etched with bands of stylised leaf scroll ornament, the closed helmet with three section neck, conforming shoulder pieces, articulated arms and with gauntlets, the body with six articulated plates above leg armour and articulated feet, 71ins high, complete with manikin body and octagonal plinth base
Estimate: £2,000.00 - £3,000.00



Lot: 1190

A 20th Century carved wooden Yoruba rider and horse equestrian figure, 34.5ins high, probably from North-East Yoruba (some original pigment - extensive termite damage and loss)
Estimate: £200.00 - £300.00



Lot: 1186

A 19th/20th Century hardwood Australian Woomera with traces of coloured pigment, 26.75ins overall (South East Australia)
Estimate: £100.00 - £150.00



Lot: 1192

@Twelve bottles of 2005 Chablis - "Le Manoir"
Estimate: £60.00 - £80.00



Lot: 1187

A West African stained carved wooden figure of a Colonial Policeman, 35ins high (first half of the 20th Century)
Estimate: £200.00 - £300.00



Lot: 1193

@Twelve bottles of 2008 Bourgogne Hautes Cotes de Beaune Blanc
Estimate: £70.00 - £90.00



Lot: 1194
@Twelve bottles of 2007
Sauvigny Les Beaune Blanc (Les
Vermonts Dessus) - Domaine
Vincent Girardin
Estimate: £200.00 - £250.00



Lot: 1199
Twelve bottles of 1998 Chateau
Les Millards (Premier Cotes de
Blaye)
Estimate: £50.00 - £70.00



Lot: 1195
@Twelve bottles of 2008 Tim
Adams Pinot Gris - Clare Valley,
South Australia
Estimate: £70.00 - £100.00



Lot: 1200
Twelve bottles of 1995 Chateau
Reysson (Haute Medoc)
Chateau bottled
Estimate: £90.00 - £120.00



Lot: 1196
@Twelve bottles of 2008
Catamayor (Viognier /
Chardonnay) Bodegas Castillo
Viejo, Uruguay
Estimate: £50.00 - £70.00



Lot: 1201
Twelve bottles of 1996 Chateau
Vignolle Marbuzet (Saint-
Estephe) Chateau bottled
Estimate: £100.00 - £120.00



Lot: 1197
@Twelve bottles of 2006 Trio
(Chardonnay, Pinot Grigio and
Reisling) - Casablanca Valley,
Chile
Estimate: £50.00 - £70.00



Lot: 1202
@Twelve bottles of 1999
Chateau Plincette (Pomerol)
bottled by the Proprietor - J.P.
Estager
Estimate: £180.00 - £240.00



Lot: 1198
@Twelve bottles of 1999
Chateau Rousseau de Sipian
(Medoc)
Estimate: £60.00 - £80.00



Lot: 1203
@Twelve bottles of 1998
Chateau Des Pez (Saint-Estephe
- Cru Bourgeois Exceptionnel)
Chateau bottled, in sealed
wooden case
Estimate: £200.00 - £250.00



Lot: 1204
@Twelve bottles of 1996 Fixin
(Burgundy) bottled by Jean-
Baptiste Bejot
Estimate: £80.00 - £100.00



Lot: 1210
Eleven Dinky diecast model
saloon cars, various models
(some overpainting and breakage
- all unboxed)
Estimate: £200.00 - £400.00



Lot: 1205
@Twelve bottles of 1998 Volnay
(Premier Cru - Les Santenots)
Domaine Vincent Sauvestre
Estimate: £120.00 - £150.00



Lot: 1211
Twenty Dinky diecast model
vehicles and three ditto trailers
(some with overpainting and
damage - all unboxed)
Estimate: £200.00 - £400.00



Lot: 1206
@Twelve bottles of 1998 Vosne-
Romanee (Burgundy) bottled by
Jean-Baptistes Bejot
Estimate: £140.00 - £180.00



Lot: 1212
Five Dinky Supertoys commercial
diecast model vehicles - Nos.
501, 511, 513, 514 and 521
(some with repainting - all boxed)
Estimate: £300.00 - £600.00



Lot: 1208
A rare Dinky French production
diecast model truck in blue livery
and worded "Societe des
Chemins de Fer", 10ins long, and
a selection of other Dinky diecast
model vehicles, various (mostly
unboxed)
Estimate: £200.00 - £400.00



Lot: 1213
Six Dinky Supertoys commercial
diecast model vehicles - Nos
14C, 561, 562, 563, 571 and 955
(all boxed)
Estimate: £150.00 - £300.00



Lot: 1209
A Dinky diecast three part model
train - "Express Passenger Set"
(No. 16), the locomotive in blue
L.N.E.R. livery (boxed), a ditto
"Road Signs" set (No. 47 -
boxed), and a selection of Dinky
diecast model vehicles and
items, various (unboxed)
Estimate: £150.00 - £300.00



Lot: 1214
Twelve Dinky diecast model
saloon cars (38 and 39 Series)
including - two Sunbeam Talbots
(some with overpainting - all
unboxed)
Estimate: £200.00 - £400.00



Lot: 1215

Twenty-four Dinky diecast model vehicles and trailers (some damaged, repainted and all unboxed)
Estimate: £170.00 - £340.00



Lot: 1216

Twelve Dinky Trade boxes - Nos 25E, 25F, 25R, 27B, 27D, 29B, 30D, 30E, 38A, 38D, 39C and 47D (generally in poor condition - some with graffiti)
Estimate: £180.00 - £300.00



Lot: 1218

A Dinky diecast model vehicle gift set - "Military Vehicles (1) No. 699", comprising - four vehicles, box for same, a ditto model - "Centurion Tank" (No. 651), box for same, a ditto model - "Tank Transporter" (No. 660), box for same, and fourteen other Dinky Toys model vehicles/guns (lacking boxes - all playworn)
Estimate: £100.00 - £150.00



Lot: 1219

A quantity of modern boxed diecast and other model vehicles, including Polistil "Merces Benz RW196" (two boxes)
Estimate: £120.00 - £160.00



Lot: 1220

An early Victorian boxed toy - "The Comic Girl" - Swinging pendulum figure with a series of interchangeable heads and caps, printed and painted, 6.675ins high (average), in original box with printed top Note : An ink dedication to the underside of the box reads "Thomas Bates, the gift of his Aunt Couchman 1858"
Estimate: £100.00 - £150.00



Lot: 1221

A small selection of model railway buildings and accessories, Colin Garratt -



Lot: 1222

A Hornby 'O' gauge clockwork tinplate passenger train set No. 21, and a Hornby 'OO' electric tank goods train set (EDG7), both in original boxes
Estimate: £150.00 - £200.00



Lot: 1223

A small collection of Hornby 'OO' steam engines, including - "Duchess of Montrose" in green livery, with tender for same, and a quantity of track, wagons and carriages (mostly tinplate - circa 1950)
Estimate: £200.00 - £300.00



Lot: 1224

A modern Hornby 'OO' gauge locomotive - "Sir Keith Park" (No. 34053), in green British Railways livery, with tender and box for same, and eight modern Hornby 'OO' gauge Pullman coaches, with boxes for same
Estimate: £120.00 - £160.00



Lot: 1225

A modern Hornby 'OO' gauge locomotive - "Seagull" (No. 4902) in blue L.N.E.R. livery, with tender and box for same, a ditto locomotive - "Evening Star" (No. 92220) in green British Railways livery, with tender and box for same, and nine modern Hornby 'OO' Pullman coaches
Estimate: £120.00 - £160.00



Lot: 1226

A modern Lima 'OO' gauge locomotive - "King George V" (No. 6000) in green British Railways livery, with tender and box for same, a ditto locomotive - "Express Parcels" (No. 34) in brown and tan livery, with box for same, one other locomotive and nine 'OO' gauge coaches
Estimate: £80.00 - £120.00



Lot: 1227

Two modern Hornby 'OO' gauge locomotives - "Princess Elizabeth" and "Princess Arthur of Connaught" (No. 6207), both in maroon L.M.S. livery (Princess Elizabeth scratched and worn), with tenders and boxes for same (Princess Elizabeth box probably replacement), one other modern Hornby 'OO' gauge locomotive (boxed) and nine 'OO' gauge coaches in Midland Region livery (unboxed)
Estimate: £100.00 - £150.00



Lot: 1232

Circle of Thomas Hargreaves (1774-1847) - Miniature shoulder-length portrait of a young woman, 2.25ins x 2.75ins (thought to be on ivory), in rosewood frame and glazed, and two 19th Century coloured engravings of gentlemen
Estimate: £100.00 - £150.00



Lot: 1228

A modern Hornby 'OO' gauge locomotive - "Britannia" (No. 70000) in green British Railways livery, with tender for same (contained in later box), and a selection of Hornby and Triang locomotives, carriages and wagons, various (one box)
Estimate: £100.00 - £150.00



Lot: 1233

Early 19th Century English School - Pair of miniatures - Shoulder length portraits of young girls, one with a doll and the other with a flower, ovals 2.75ins x 2.25ins, in gilt wood frames and glazed
Estimate: £200.00 - £300.00



Lot: 1229

A modern Hornby 'OO' gauge rail car (No. 29) in G.W.R. cream and brown livery, box for same, and a selection of Hornby and other 'OO' gauge locomotives, wagons and accessories, various (one box)
Estimate: £120.00 - £160.00



Lot: 1234

Early 20th Century School - Miniature - Shoulder length profile of a woman, thought to be on ivory 4ins x 3ins, signed "J. Sendino" and dated 1904, in gilt metal frame and glazed, and four other miniature (all framed)
Estimate: £400.00 - £600.00



Lot: 1230

19th Century Continental School-miniature oil painting - Crucifixion scene taken from a 16th Century Book of Hours, oval copper panel 2.625ins x 2.25ins, in gold metal coloured metal and coloured enamel frame with openwork borders and with concave glass to front and reverse, overall size 3.5ins x 2.625ins
Estimate: £5,000.00 - £6,000.00



Lot: 1235

Early 20th Century School - Miniature - Portrait of a standing woman, possibly a Nun, thought to be on ivory 7.25ins x 3.25ins, signed "J. Sendino" and dated 1908, in gilt brass easel pattern frame and glazed and late 19th Century School - Miniature - Portrait of a seated woman in Oriental dress, thought to be on ivory 4ins x 3.5ins, signed "C. Grullon" and dated 1897, in later gilt frame and glazed (both miniatures with rubbing and wear especially the former)
Estimate: £300.00 - £400.00



Lot: 1231

A 19th Century circular wax shoulder-length portrait of a young girl, 3.5ins diameter, in gilt moulded frame and glazed (frame 9.5ins square)
Estimate: £80.00 - £120.00



Lot: 1236

19th Century School - Painted silhouette - Young boy wearing a top hat and carrying a naval cap, 7ins x 5.25ins, in ebonised frame and glazed
Estimate: £60.00 - £80.00



Lot: 1237

Indian School - Four miniatures - oval shoulder-length portraits of male worthies, on ivory each 23mms x 28mms (unframed)
Estimate: £200.00 - £300.00

9ins x 5ins x 3.25ins high (both containing a selection of costume jewellery and other items), an oak glass fronted smoker's companion, 6.25ins x 5.75ins x 12.75ins high (locked - containing a number of pipes and cigars), and a fitted hardwood Oriental box, 5.75ins x 4.25ins x 3.25ins high
Estimate: £80.00 - £120.00



Lot: 1238

A 19th Century tortoise-shell and mother of pearl inlaid rectangular card case inlaid with floral spray, 3.5ins x 2.5ins, a ditto mother of pearl and silvery metal inlaid rectangular purse, 4.25ins x 3.25ins, and two mother of pearl card cases, various
Estimate: £150.00 - £200.00



Lot: 1243

A Victorian oak and brass mounted house letter box, the sloping with brass plate worded "Letters" above posting slot, the folding front inset with rectangular bevelled glass panel, 9.5ins x 5.5ins x 16ins high, and key for same
Estimate: £150.00 - £200.00



Lot: 1239

A late Georgian mahogany rectangular tea caddy inlaid with boxwood stringings, 11ins x 6.75ins x 7.75ins high, a late Victorian stained wood "Lazy Susan", 15.5ins diameter, and a grained as rosewood and brass mounted book slide, 13ins x 4.75ins
Estimate: £100.00 - £200.00



Lot: 1244

A 19th Century French rosewood and red tortoise-shell Boulle rectangular writing slope with shaped top and plain rosewood interior, 13ins x 10.25ins x 4.5ins high
Estimate: £150.00 - £200.00



Lot: 1240

A George III mahogany rectangular tea caddy inlaid with bandings, the interior fitted with original cut-glass sugar bowl and two lidded tea canisters, 12ins x 6ins x 6ins high (small pieces of banding missing to front and slightly discoloured and faded)
Estimate: £120.00 - £160.00



Lot: 1245

A Victorian papier-mache rectangular writing slope painted with flowers and gilt and inlaid with mother of pearl, 11ins x 8.5ins x 3.5ins high, a ditto rectangular work box, 9.25ins x 6ins x 4.25ins high, a Jennens & Bettridge papier-mache small tray of shaped outline, 10ins diameter (stamped to underside) and a snuffer tray of shaped outline
Estimate: £100.00 - £200.00



Lot: 1241

A Victorian brass bound rosewood writing box, 16ins x 9.5ins x 5.5ins high
Estimate: £100.00 - £150.00



Lot: 1246

A Victorian mother of pearl inlaid papier-mache writing slope, 11.75ins wide x 9.75ins deep x 4ins high
Estimate: £100.00 - £150.00



Lot: 1242

A late 19th Century black tooled leather covered jewellery box with removable inner tray, 9ins wide x 6.5ins deep x 3.75ins high, and a similar with fall-front,



Lot: 1247

A 19th Century black papier-mache rectangular tray with moulded and curved rim, decorated in gilt with floral sprays and insects, 22.25ins x 17ins (rim chipped)

Estimate: £150.00 - £200.00



Lot: 1252

A Louis Vuitton vanity case, the two division suede covered interior with small case and leather fittings, 14ins x 8.5ins x 10.25ins high, (No. 970886 - with two keys for same)

Estimate: £400.00 - £600.00



Lot: 1248

A 19th Century black papier-mache shell pattern crumb tray decorated in gilt with chinoiseries, 11.5ins x 10.5ins, and brush for same, one other ditto, a Victorian black papier-mache oval tray, 24.5ins x 19ins, and a large selection of other black papier-mache boxes and trays, various

Estimate: £150.00 - £200.00



Lot: 1253

A 19th Century Dutch mahogany circular jardiniere with waisted body, inlaid with boxwood stringings, folding bale handle to top and with narrow staves to sides, 14.5ins diameter x 16ins high, with brass liner for same

Estimate: £200.00 - £300.00



Lot: 1249

A Victorian black papier-mache oval two-handled bowl inlaid in mother of pearl and decorated in gilt with chinoiseries, 15.25ins x 10ins, two ditto crumb trays each 12ins x 10ins, and a selection of black and red papier-mache boxes and trays, various

Estimate: £150.00 - £200.00



Lot: 1254

A late 18th/early 19th Century Dutch mahogany and brass bound oval bucket with folding bale handle, 13ins x 10ins x 14ins high, with brass liner for same

Estimate: £300.00 - £500.00



Lot: 1250

A late 19th Century Continental gilt metal six-fold arched table screen inset with watercolour and feather bird portraits, 23.5ins long (extended) x 5ins high

Estimate: £150.00 - £200.00



Lot: 1255

A 18th Century South Staffordshire enamel cylindrical bodkin case enamelled with sprays of flowers and gilding, 4.75ins

Estimate: £100.00 - £150.00



Lot: 1251

An Edward VII silver mounted coromandel wood three bottle tandalus, the case with shaped ends and heavy plated locking bar and handle, containing three slice and diamond cut octagonal spirit decanters, 7ins high, and conforming bulbous stoppers, the base with pierced silver strapwork, 16.25ins x 6.25ins x 12.75ins high (locking bar stamped Betjemann's Patent, London, No. 52454 and complete with key but non-operative)

Estimate: £300.00 - £400.00



Lot: 1256

A 19th Century tortoise-shell box with cut and inlaid steel decoration to lid, 3ins x 2ins x 1.5ins high, a small Victorian black lacquer and mother of pearl counter tray of shaped outline, 4.5ins x 3.5ins, a Victorian ivory purse, the front carved and dated 1876, 3.5ins x 2ins, and fifteen other pieces, various

Estimate: £150.00 - £200.00



Lot: 1257

A late 19th/early 20th Century Continental gilt brass and micro mosaic rectangular photograph frame with oval cut-out, the white border decorated in raised micro mosaic with daisy flowerheads on a turquoise ground, 8.25ins x 6ins, oval cut-out to hold photograph 5ins x 3.75ins (some slight damage and a few minor pieces missing)
Estimate: £250.00 - £400.00



Lot: 1261

An old wooden malt shovel, 45.5ins overall, an old wooden rectangular six division dough tray, 52ins x 9ins, and a rectangular two-handled tray with shaped rim, 37ins x 25ins
Estimate: £100.00 - £150.00



Lot: 1258

A late 19th/early 20th Century Continental gilt brass and micro mosaic rectangular dressing table mirror of small proportions, with arched top frame, the border inlaid with various summer flowers on a turquoise ground and with gilt brass griffin pattern sides, set with bevelled mirror plate, on ball feet, 9ins x 8.125ins overall (micro mosaic for some of the larger flowers missing in places and gilt brass bead mouldings encrusted with verdigris, and lacking strut support to back)
Estimate: £200.00 - £300.00



Lot: 1262

A 19th Century sycamore circular platter, 17.5ins diameter (slightly misshapen) and a quantity of wax fruit
Estimate: £100.00 - £150.00



Lot: 1264

A good 19th Century German carved and painted wood Butcher's Shop diorama showing the two standing figures of the Butchers and their Assistant outside a shop hung with joints of meat and carcasses, in glazed rectangular case with birdseye maple veneered border, 20.5ins x 28.75ins x 7ins deep
Estimate: £3,000.00 - £4,000.00



Lot: 1259

A 19th Century blue canvas cylindrical shell carrier with gilt and polychrome coat of arms, 20ins high (some damage)
Estimate: £80.00 - £120.00



Lot: 1266

A Victorian woolwork panel worked in coloured threads with an urn of mixed flowers, 20ins x 24ins, in maple frame and glazed
Estimate: £150.00 - £200.00



Lot: 1260

A 19th Century sycamore dairy bowl, 15ins diameter x 4.5ins high (wormed, cracked and consolidated), a 19th Century wooden rattle, 9ins long, a Meerschaum pipe with carved head, in fitted case, 5.5ins, and a small collection of other decorative items, various
Estimate: £80.00 - £120.00



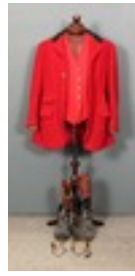
Lot: 1267

An early 19th Century needlework sampler worked in coloured silks with a verse - "Eternity", 14ins x 12.5ins, framed and glazed
Estimate: £60.00 - £80.00



Lot: 1269

An early 19th Century English needlework sampler by Maria Wood, worked in coloured silks and dated 1822, 20.5ins x 17.5ins, in oak frame and glazed
Estimate: £250.00 - £350.00



Lot: 1274

"The West Street Hunt" - Moss Bros hunting pink jacket and waistcoat, a pair of boots (size 7 1/2), a pair of modern spurs and buttons
Estimate: £150.00 - £200.00



Lot: 1270

Three handbags, comprising - Two of snakeskin by Asprey and Mappin & Webb, and one leather with snakeskin "Sunburst"
Estimate: £80.00 - £120.00



Lot: 1275

A gentleman's grey top hat by Lock & Co, St. James's Street, London (7 3/8 - in original card box) and a pair of gloves in New & Lingwood Ltd printed envelope
Estimate: £60.00 - £80.00



Lot: 1271

A black silk top hat by Gieves of Old Bond Street, London (6 7/8), three bowler hats, and a quantity of sporting equipment, comprising - two pairs of leather boxing gloves, leather punch ball, football and early cricket ball (unmarked), and a leather brass studded dog collar
Estimate: £80.00 - £120.00



Lot: 1276

A leather riding whip with antler handle, 83ins, a riding crop, 33ins, a hardwood walking stick, turned to simulate bamboo with silvery metal mount, 36.5ins, and a small collection of sticks and canes, various
Estimate: £80.00 - £120.00



Lot: 1272

A Grenadier Guards red dress tunic by Kashket & Partners mounted on a dressmaker's dummy
Estimate: £60.00 - £80.00



Lot: 1277

A set of six Edwardian mauve and white mother of pearl and gilt metal mounted dress buttons, and matching hat pin finial, 6.75ins diameter, six mother of pearl dress studs, all in fitted case, a gilt metal mounted amethyst paste set Art Nouveau style pin, and two other pins
Estimate: £150.00 - £200.00



Lot: 1273

Sonia Delaunay (1885-1979) - Liberty's silk scarf with geometric pattern, signed and dated 1969, 30.75ins square, and one other similar, 27ins x 26ins (unsigned)
Estimate: £100.00 - £150.00



Lot: 1278

An early 20th Century "Satsuma" mounted hat pin, the 1.25ins button topped finial decorated with a chrysanthemum and snail on leafage, an early 20th Century gilt metal mounted button top pattern micro mosaic set hat pin, .75 diameter, and an early 20th Century cold painted metal mounted hat pin with stylised grape and leafage finial
Estimate: £150.00 - £200.00



Lot: 1279

A George V silver and amethyst set hat pin the Art Nouveau manner, by Charles Horner, Chester 1910, and five other silvery metal mounted hat pins, various

Estimate: £200.00 - £300.00



Lot: 1286

A late 19th Century ebonised stereoscopic card viewer, 14ins x 8.5ins x 3.5ins (closed), and a collection of loose stereoscopic cards

Estimate: £80.00 - £120.00



Lot: 1282

A lacquered brass and leather covered four drawer telescope by Cox, Devonport, Optician to the R.W.Y.C., 30.5ins

Estimate: £100.00 - £150.00



Lot: 1287

A collection of cameras, cine cameras, lenses and other photograph equipment, including - Leica camera No. 661363 with lens, in original fitted case, Franke & Heidecke Braunschweig Rolleicord camera, in fitted case, Olympus OM10 and lens, in fitted leather case, and other items, various

Estimate: £200.00 - £300.00



Lot: 1283

An early 19th Century lacquered brass five drawer telescope, 46ins long extended, with oak case and four extra objectives for same (telescope with extensive wear to lacquering and case in poor condition)

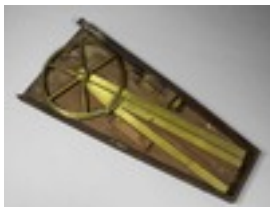
Estimate: £120.00 - £160.00



Lot: 1288

An English 20th Century full size violin with figured two piece back, back measurement excluding 14.25ins - 23.5ins overall (with ink inscription to interior "A.W. Howard"), with Hill & Son bow, in fitted case

Estimate: £500.00 - £700.00



Lot: 1284

A mid 19th Century lacquered brass Station pointer by Cary of London, 19ins, in original fitted box with detachable eyepiece

Estimate: £100.00 - £150.00



Lot: 1289

A 19th/20th Century German cello with figured two piece back, back measurement excluding button 30ins, 48.5ins overall, in blue fabric case

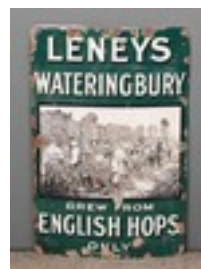
Estimate: £150.00 - £200.00



Lot: 1285

A 19th Century stereoscopic viewer in fitted mahogany case, 9.25ins x 13ins x 8.25ins high (closed), and a small collection of stereoscopic slides in a walnut box, various

Estimate: £100.00 - £150.00



Lot: 1292

A rare early 20th Century Brewery enamel advertising sign - "Leneys Wateringbury Brew from English Hops Only", with white lettering on a green ground, the centre with a printed view of "A Kentish Hop Garden", 30ins x 20ins (some enamel loss) Note: The Phoenix Brewery was established by Augustus Leneys in Wateringbury in 1843, and was subsequently acquired by Whitbread & Co in 1927 although it continued to trade as the Phoenix Brewery

Estimate: £500.00 - £700.00



Lot: 1293

A Frederick Lenny & Sons "Phoenix Brewery of Watringbury" olive tinted beer bottle, 8ins high Note: The Phoenix Brewery was established by Augustus Loney in Watringbury in 1843, and was subsequently acquired by Whitbread & Co in 1927 although it continued to trade as the Phoenix Brewery
Estimate: £40.00 - £60.00



Lot: 1298

Half a geode of a banded agate and quartz, 10ins x 6.5ins, on square plated stand by Redmile of London, and ebonised base, 7.25ins square
Estimate: £120.00 - £160.00



Lot: 1294

A early 20th Century enamel advertising sign - "Depot for Oceanic Footwear", the shaped sides decorated with boot and crowd, 13ins x 19ins overall (chipped and rusted)
Estimate: £250.00 - £400.00



Lot: 1299

A 19th Century salt glazed stoneware chimney pot with crenulated top, 28.5ins high
Estimate: £100.00 - £150.00



Lot: 1295

A 20th Century inlaid cream marble rectangular backgammon board, 29.5ins x 27.5ins (thought to be retailed by Aspreys)
Estimate: £150.00 - £200.00



Lot: 1300

A 19th Century Russian painted icon on pine panel - Group of standing saints including St. Tryphon and St. Martha, and with vignette of the Old Testament Trinity to top, 21ins x 17.25ins
Estimate: £1,000.00 - £1,500.00



Lot: 1296

Richard Graefe (20th Century) - Three marquetry panels - Landscapes with tiger, stag and lion, each 14.5ins x 23ins, stamped signature to reverse of each, in mahogany frames
Estimate: £150.00 - £200.00



Lot: 1301

An 18th/19th Century Russian painted icon on pine panel - The Mother of God of the Token, 17.5ins x 14.75ins (bowed and cracked)
Estimate: £500.00 - £600.00



Lot: 1297

Three mineral specimens - Iron pyrites ("Fools Gold"), 10ins wide x 9ins deep x 8ins high, rose quartz and clear quartz
Estimate: £80.00 - £120.00



Lot: 1302

A 19th Century Greek Provincial painted icon on pine panel - Madonna of the Unfading Rose, 14ins x 10ins (in poor condition with woodworm damage)
Estimate: £200.00 - £300.00



Lot: 1303

A 19th Century gilt rectangular picture frame, with verre eglomise inner slip, 26.5ins x 27.5ins (to take picture 18.5ins x 13ins)
Estimate: £70.00 - £100.00



Lot: 1304

An early 20th Century leaded clear and coloured glass panel - Vase of flowers, 34ins x 26ins (slight damage), in later wood frame
Estimate: £200.00 - £300.00



Lot: 1311

A late 19th Century Continental carved white marble figure of an embracing couple, 32ins high (indistinctly signed - with repair to back)
Estimate: £1,200.00 - £1,600.00



Lot: 1305

An early 20th Century leopard skin mounted on woven fabric with black felt trim, 80ins overall
Estimate: £300.00 - £400.00



Lot: 1313

Two 19th Century black japaan metal and gilt decorated cylindrical tea canisters and lids in the "Chinese" manner, each 17.5ins high, and a Victorian black japaan cylindrical bucket painted in colours with a landscape, 10ins diameter x 11ins high (handle missing)
Provenance : The tea canisters from T.D. Brice & Sons, Grocers & Wine Merchants, High Street, West Malling and thence by family descent
Estimate: £150.00 - £200.00



Lot: 1306

A modern scratch built motorised remote control model of a schooner in full sail, 60ins long, with control for same
Estimate: £350.00 - £500.00



Lot: 1314

A 19th Century gilt bronze seal matrix of Medieval design cast with a mounted horseman and retainer beside a castellated building, with entwined double snake handle, 3ins diameter x 3ins high (the head of one snake broken off and missing) Note : By repute found by the great grandfather of the vendor on the Common in Southwold, Suffolk, in 1852
Estimate: £200.00 - £300.00



Lot: 1307

A Victorian domed top travelling trunk covered in metal of crocodile skin design and wood bound, with printed fitted card interior, 36ins wide x 21ins deep x 24ins high (slight damage and wear throughout)
Estimate: £150.00 - £200.00



Lot: 1310

A late 19th Century Italian carved white marble bust - veiled Mother and Child, with turned socle for same, 22ins high (some chipping)
Estimate: £1,200.00 - £1,600.00



Lot: 1315

A set of Victorian brass and cast iron balance scales stamped "Birmingham" and with "VR" cipher (the pan marked "Newcastle") 33ins high, and twenty-two brass weights, some of dumb bell shape - 14lbs to 1/2 ozs
Estimate: £150.00 - £200.00



Lot: 1316

A late Victorian pewter oval two-handled game dish by James Dixon & Sons with hot water base, on four scroll feet, 27ins x 18.5ins, and a Victorian pewter oval dish cover of lobed design, 16ins x 11ins (both with damage and wear)

Estimate: £100.00 - £150.00



Lot: 1322

A Victorian white painted cast iron cylindrical heater on three splayed feet, 12ins diameter x 30ins high

Estimate: £60.00 - £80.00



Lot: 1317

A set of three 19th Century graduated bell metal measuring tankards - Quart, Pint and Half Pint, two graduated oak tankards with plated mounts, 5.75ins and 4.75ins high respectively, five 19th Century pewter bulbous measures and one Continental pewter measure

Estimate: £100.00 - £150.00



Lot: 1323

A 19th Century polished steel fire grate, the pierced serpentine with turned and scrolled supports, 34ins wide x 22ins deep x 22ins high (cast in relief 'Netherton' to underside)

Estimate: £500.00 - £700.00



Lot: 1319

An Arts & Crafts copper circular charger by John Pearson (1859-1930) embossed with Phoenix type bird to centre, the rim with birds, foliage and scroll work, 14.625ins diameter, signed to reverse and dated 1899, and with No. 2443

Estimate: £500.00 - £700.00



Lot: 1324

A pair of mid 18th Century French brass pillar candlesticks with octagonal knopped columns and conforming octagonal moulded bases, 8ins high (underside silvered and apparently with duty mark dating 1745-1749)

Estimate: £200.00 - £300.00



Lot: 1320

Two 19th Century American cast iron door knockers, comprising - Eagle surmounting an acanthus leaf, 10ins high, and rope twist striker, 8.5ins high (stamped manufacturer's mark - striker plate missing)

Estimate: £100.00 - £150.00



Lot: 1325

A set of 19th Century polished brass balance scales with bull's head pattern terminal, the shaped base fitted for nesting weights, 47ins high (base slightly dented), and weights for same, and one other polished brass balance scale with weighing pans for same

Estimate: £450.00 - £600.00



Lot: 1321

Two engraved copper plates with 18th Century views - Dockyard with British Men of War, 10ins x 14ins and Grand Canal, Venice, 8.25ins x 14.75ins, two engravings - "The North-West View of Richborow-Castle", 5.75ins x 13.75ins, and "Chatham", 8ins x 15.75ins, and a small collection of English 19th Century engravings, various

Estimate: £100.00 - £150.00



Lot: 1326

A 19th Century copper tea urn with brass tap and cast classical figure finial on three dolphin supports, 14ins high

Estimate: £100.00 - £150.00



Lot: 1328

A pair of 19th Century gilt brass and bronze effect single branch candlesticks of naturalistic form with a seated figure and hung with cut prismatic drops, 9.5ins high

Estimate: £200.00 - £300.00



Lot: 1334

A late 19th Century French gilt spelter group of three boys playing boules, on walnut base, 8.5ins high

Estimate: £100.00 - £150.00



Lot: 1329

A pair of 19th Century dark brown patinated bronze two-handled urns of classical form, the exteriors cast with ivy leaves and berries, on polished black slate stepped and column bases, 8.75ins high

Estimate: £150.00 - £200.00



Lot: 1335

An Art Deco bronzed spelter figure of a dancing girl with an Alsatian, on shaped marble base, signed "H. Molino", 10.5ins high

Estimate: £150.00 - £200.00



Lot: 1330

A pair of brown patinated bronze candlesticks of "Mannerist" design modelled with seated cupids astride lizards holding aloft cornucopias, 8.75ins high

Estimate: £200.00 - £300.00



Lot: 1336

A bronzed spelter group - Seated woman and pheasant, on polished slate base, 9.5ins high

Estimate: £200.00 - £300.00



Lot: 1331

A Victorian gilt brass candlestick of rococo form, 19.5ins high (now converted to an electric table lamp with shade for same), a 19th Century French bronze five light hanging chandelier, 15ins diameter x 21ins drop, and a 19th Century walnut framed circular wall mirror with etched plate, 17ins diameter

Estimate: £150.00 - £200.00



Lot: 1337

A bronzed spelter bust - "Beethoven", on turned ebonised wood stand, 8.75ins high

Estimate: £80.00 - £120.00



Lot: 1333

A 20th Century grey patinated cast iron or steel model of a ewe with lowered head, scratching its ear, 7.5ins high (unsigned)

Estimate: £120.00 - £160.00



Lot: 1338

19th Century Continental School after Giambologna (1529-1608) - Bronzed spelter figure - "Fortuna", on turned marble base with bronze relief panel of cherubs, 13.75ins high, signed "Bologna" (trumpet missing)

Estimate: £150.00 - £200.00



Lot: 1339
A modern bronze figure of a horse and a jockey on rectangular polished black marble stepped base, 13.25ins high, signed "Mene"
Estimate: £120.00 - £160.00



Lot: 1348
19th Century Continental School - Standing bronze figure - "Venus de Medici", on red marble base, 19.5ins high
Estimate: £500.00 - £700.00



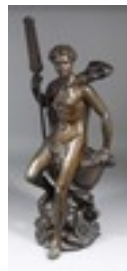
Lot: 1340
A modern bronze figure of a horse and a jockey on oval black polished marble base, 18.25ins high, signed "Pierre Jules Mene"
Estimate: £150.00 - £200.00



Lot: 1349
19th Century French School - Bronze figure - Drinking faun after Clodion (1738-1814), on turned polished slate base, 17.5ins high, signed "Clodion"
Estimate: £400.00 - £600.00



Lot: 1341
After Frederic Remington (1861-1909) - Dark brown patinated bronze group - "The Bronco Buster", on green veined marble base, 32ins high
Estimate: £800.00 - £1,200.00



Lot: 1350
After Adrien Etienne Gaudetz (1845-1902) - Bronze figure - Seated naked male with a spear, 25.25ins high, signed "A. Gaudetz"
Estimate: £300.00 - £400.00



Lot: 1345
Benedetto Sangiovanni (1781-1853) - Green/brown patinated bronze figure - Seated rough coated Retriever, on oval base, 8.25ins high, signed on base and dated 1852
Estimate: £400.00 - £600.00



Lot: 1351
A pair of 19th Century Continental bronze figures of child musicians, the boy playing a hurdy-gurdy, the girl with triangle, on circular socles and polished slate bases, 9.75ins high (unsigned)
Estimate: £200.00 - £300.00



Lot: 1346
After Alexei Gratcheff (1780-1850) - Brown patinated bronze - Troika passing a mile post, on polished black slate base, 12.5ins high, signed on base in Cyrillic
Estimate: £500.00 - £700.00



Lot: 1352
19th Century French School - Bronze figure after the Antique - "The Dying Gaul", 3.5ins high, with founder's mark of "F. Barbedienne"
Estimate: £200.00 - £300.00



Lot: 1353
19th Century Continental School - Bronze figure - Standing Mastiff on polished slate base, 7.5ins high
Estimate: £400.00 - £600.00



Lot: 1354
After E. Drouot (1859-1945) -
Bronze figure of a blacksmith on
polished slate base, 11.5ins high,
signed "E. Drouot"
Estimate: £250.00 - £350.00



Lot: 1362
A gilt brass urn shaped electric
table lamp of Neo-classical form,
on green marble base, 26ins
high, and shade for same
Estimate: £150.00 - £200.00



Lot: 1355
A pair of 20th Century polished
bronze busts - Benin Warrior
Kings on white veined stepped
marble plinths, 14.5ins and
15.5ins high
Estimate: £150.00 - £200.00



Lot: 1363
A pair of Adlake "Non Sweating"
black painted metal railway
lamps, 17ins wide x 9ins deep x
17ins high (both rusted and worn -
one with damage to clear plastic
front), and seven other railway
lamps (all rusted and worn)
Estimate: £120.00 - £160.00



Lot: 1356
19th Century French School -
Dark brown patinated bronze
figure of a standing woman in
Roman dress, on square base,
26.5ins high (base stamped
"F.Barbedienne Fontdeur", and to
side with "Collas" circular stamp
"Reduction Mechanique"
Estimate: £2,500.00 - £3,500.00



Lot: 1364
A brass five light electrolier of
Dutch design with circular
sconces, splayed arms and
bulbous stem, 23ins diameter x
14ins drop
Estimate: £100.00 - £150.00



Lot: 1360
A plated metal and Ostrich egg
table lamp by Redmile of London
with frog pattern column, on
ebonised octagonal base, 17ins
high
Estimate: £120.00 - £160.00



Lot: 1365
A modern brass six light
electrolier in the "17th Century
Dutch" style with knopped stem
and bulbous knob under and with
six leaf capped scroll branches,
30ins high
Estimate: £120.00 - £160.00



Lot: 1361
A late Victorian brass mounted
table oil lamp by Duplex with
opaline blue tinted glass bulbous
reservoir, on reeded column and
pierced base, 18ins high (now
converted to electricity), with
shade for same, and a grey-
painted ships oil lamp, 14ins high
Estimate: £60.00 - £80.00



Lot: 1366
A set of four Victorian cast brass
rectangular two light girandoles,
the crests cast with urns and
dolphins and with stylised leaf
and strap work borders enclosing
bevelled mirror panels, the leaf
capped scroll branches with
electric candle fitments, 24ins
drop x 8ins wide
Estimate: £250.00 - £400.00



Lot: 1367
A pair of French gilt brass two
branch wall lights of rococo form
with electric candle fitments,
19ins high
Estimate: £100.00 - £150.00



Lot: 1368

A set of four gilt brass twin light electric wall lights of Neo-classical form with oval paterae and anthemion ornament to back, the leaf capped scroll branches with candle fitments, 14ins high
Estimate: £150.00 - £200.00



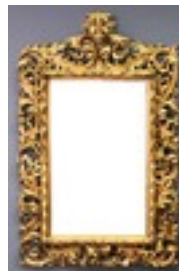
Lot: 1375

A Continental gilt framed rectangular mirror, the wide frame carved with floral and leaf scroll ornament and inset with later bevelled mirror plate, 24ins x 18.5ins (lacking cresting), and a pair of dark stained mahogany and gilt rectangular wall mirrors of Georgian design, the fretted crestings with applied gilt eagle ornament above moulded inner frames and with conforming shaped aprons, each 33ins x 17ins overall
Estimate: £80.00 - £100.00



Lot: 1369

A set of ten modern brass twin light wall lights with oval back plates and scroll branches with electric candle fitments, 10ins high
Estimate: £250.00 - £400.00



Lot: 1376

A good Florentine carved giltwood rectangular wall mirror of 18th Century design, the border boldly fretted and carved with leaf scroll ornament, moulded leaf and ribbon pattern frame and inset with bevelled mirror plate, 53ins x 34ins overall (cresting broken off and restuck, slight chipping to carving and two loose pieces)
Estimate: £500.00 - £700.00



Lot: 1370

A pair of cast brass twin light wall lights of rococo form with electric candle fitments, 14ins high, three brass single branch electric wall lights with circular rams head pattern back plates, a pair of similar twin branch wall lights, and a small set of other wall lights, various
Estimate: £70.00 - £100.00



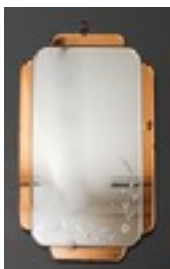
Lot: 1377

A French gilt framed oval wall mirror with bold moulded rococo pattern cresting and conforming apron, the flat frame moulded with leaf scroll ornament and with bevelled mirror plate 54ins x 30ins overall
Estimate: £400.00 - £600.00



Lot: 1372

Ron Hitchins (20th Century) - Rectangular mirror bordered by fifty-eight silver painted terracotta abstract relief moulded tiles, 48ins x 17.5ins (lower right signed)
Estimate: £100.00 - £150.00



Lot: 1373

A clear and orange tinted rectangular mirror of Art Deco design, the plate engraved with flowers, 29.5ins x 19.5ins
Estimate: £50.00 - £70.00



Lot: 1385

A mid 19th Century gilt brass cased "Strut" clock in the manner of Thomas Cole, retailed by Dent 33 Cockspur Street, London, the 3.375ins diameter silvered dial with Roman numerals and engraved with strapwork to centre, fleur-de-lis pattern hands, within pierced and engraved gilt brass slip to eight day single train movement with balance escapement and integral keywind, in gilt brass shield pattern strut frame, the three tier borders engraved with rope ornament, 6.5ins x 5.75ins overall
Estimate: £1,500.00 - £2,000.00



Lot: 1374

A gilt framed oval wall mirror of early 19th Century design with gadrooned and bead mounts and leaf pattern oval paterae, with bevelled central plate, 29ins x 39ins overall
Estimate: £120.00 - £160.00



Lot: 1386

A late 19th/early 20th Century French gilt brass cased carriage clock retailed by Mappin & Webb Ltd, London, the white enamelled dial with Roman numerals to the eight day two train movement striking and repeating on a gong, contained in case with reeded Corinthian columns to corners, 6.5ins high (case extensively rubbed), with key for same
Estimate: £450.00 - £600.00



Lot: 1390

A late 19th Century French carriage timepiece No. 2260, with alarm, the white enamelled dial with Roman numerals to the eight day single train movement ringing on a bell, contained in brass and bevelled glass "One Piece" case, 4.75ins high (escapement replaced and dial chipped to top edge and cracked), and with maroon leather covered travelling case for same
Estimate: £120.00 - £160.00



Lot: 1387

A late 19th Century French carriage clock, the white enamelled dial with Roman numerals above alarm dial with Arabic numerals to the eight day two train movement striking, repeating and with alarm work on single bell, contained in polished brass and bevelled glass corniche pattern case, 5.75ins high (with later key)
Estimate: £275.00 - £350.00



Lot: 1391

A late 19th/early 20th Century French carriage clock with alarm retailed by Drocourt Fils, Paris, the 1.75ins diameter white enamelled dial with Arabic numerals and subsidiary seconds dial within paste set gilt border to the eight day movement striking on a bell, contained in brass and bevelled corniche pattern case, 4.75ins high
Estimate: £100.00 - £150.00



Lot: 1388

A late 19th Century French carriage clock No. 1864, the 1.75ins diameter white enamelled dial with Roman numerals (chip between 12 and 1) within plain gilt slip to the eight day two train movement striking and repeating on a gong, contained in brass and bevelled glass case, moulded top and corners, 5.25ins high, engraved "From Grandmother to L.S.O. Feby ?? 1892" and with maroon leather covered travelling case for same
Estimate: £200.00 - £300.00



Lot: 1392

A modern polished brass and bevelled glass carriage timepiece, the 1.25ins diameter white enamelled dial inscribed Elliott & Son, London, to the eight day movement, contained in oval case engraved with leaves, 3.5ins high
Estimate: £100.00 - £150.00



Lot: 1389

A late 19th Century French carriage clock retailed by J. Vickery, Regent Street, London, the white enamelled dial with Roman numerals to the eight day two train movement striking and repeating on a gong, contained in brass and bevelled glass corniche pattern case, 5ins high (lacking key), and leather travelling case for same
Estimate: £150.00 - £200.00



Lot: 1393

An early 20th Century brown leather covered and silver mounted travelling timepiece with 1.25ins diameter white enamelled dial, to the eight day movement, contained in case of plain design, the top mounted with the letters "AHH", 3ins high (dial damaged, leather scuffed and worn, silver mounts rubbed - engraved to door "Percy Edwards & Co, 71 Piccadilly"), with later key for same, and a 20th Century French polished brass and bevelled glass cased carriage timepiece, the case of oval shape, 5ins high
Estimate: £250.00 - £300.00



Lot: 1395

A late 19th/early 20th Century brass "Lantern Clock" of "17th Century" design, the 4.25ins diameter silvered chapter ring with Roman numerals and with engraved dial centre inscribed Thomas Mudge to the French eight day timepiece movement with balance escapement, contained in brass case of traditional form with turned finial and turned pillar uprights and with fretted crestings, 10ins high, mounted on ebonised plinth
Estimate: £200.00 - £300.00



Lot: 1399

A 19th Century French ormolu and porcelain mantel clock by Japys Freres, No. 6503, the 3.5ins diameter porcelain dial decorated in turquoise and gilt and with Roman numerals, the dial centre decorated with butterflies and trophies to the eight day two train movement striking on a bell, contained in ormolu case with bold urn surmount and bearded masks to sides, inset with four further porcelain panels decorated with young lovers and floral sprays, bold acanthus leaf swags and mounts, on turned feet, 14.5ins high (dial with some restoration and gilt jewellery rubbed in places)
Estimate: £700.00 - £1,000.00



Lot: 1396

A 19th Century French ebonised and red tortoiseshell Boule cased mantel clock, No. 6485, the 3.75ins diameter black chapter ring with Roman numerals to the eight day two train movement striking on a bell, in rectangular angled front case, 10.75ins high
Estimate: £200.00 - £300.00



Lot: 1400

A 19th Century French brass cased "Four Glass" mantel clock by S.Marti and Cie No 3268 411, the 3.75ins diameter white enamel chapter ring with Roman numerals and visible escapement to eight day two train movement with mercury compensated pendulum, striking on a bell, contained in polished brass and bevelled glass rectangular case with moulded top and corners, 10.75ins high
Estimate: £450.00 - £1,600.00



Lot: 1397

A late 19th/early 20th Century French red tortoiseshell, Boule and gilt brass mounted mantel clock, 3.25ins diameter white enamelled dial with Arabic numerals to the eight day movement with balance escapement, contained in balloon pattern case with red tortoiseshell Boule front and gilt brass scroll and floral mounts, 12ins high
Estimate: £200.00 - £300.00



Lot: 1401

A 19th Century French gilt metal mantel clock by Japy Freres, No. 9093, the 3.25ins diameter white enamelled dial with Roman numerals to the eight day two train movement striking on a bell, contained in drum pattern case surmounted by seated figure of a man in 18th Century dress, and giltwood plinth for same, 17.75ins high, on oval ebonised base and under glass dome (dome cracked)
Estimate: £150.00 - £200.00



Lot: 1398

A late 19th Century French red tortoiseshell Boule and gilt brass mounted mantel clock by A.D. Mougins, No. 54841, the 3.75ins gilt dial with raised enamel Roman numeral cartouches to the eight day two train movement striking on a gong, contained in balloon shape case with floral urn finial and leaf mounts, 13ins high (chipped VII numeral and Boule lifting in places)
Estimate: £275.00 - £350.00



Lot: 1402

An early 20th Century French mantel clock by R.C. of Paris, No. 346987, the 5ins diameter white enamelled dial with Arabic numerals to the eight day two train movement striking on a gong, contained in mahogany, kingwood and brass mounted case with arched and moulded top, 13ins high
Estimate: £200.00 - £300.00



Estimate: £150.00 - £200.00

Lot: 1406

A late 19th/early 20th Century German walnut cased mantel clock of 18th Century design with 4ins silvered dial to the eight day two train movement striking on a gong, contained in case with three brass finials, shaped top and turned columns to front, 18.5ins high
Estimate: £80.00 - £120.00



Lot: 1403

An imposing early 19th Century French bronze and Sienna marble three piece clock garniture retailed by Lepine, Place des Victoires, the 3.75ins diameter white enamelled dial with Roman numerals to the eight day two train movement with silk suspension striking on a bell, contained in bronze and Sienna marble case, the bronze modelled in the form of "Diana" resting on a rocky outcrop with a dog at her side, the rectangular base with bold ormolu leaf pattern mounts and on scroll toes, 24.25ins high, and pair of bronze busts depicting "Nicholas Poussin" and "Raphael" on conforming Sienna marble bases with leaf mounts, 14ins high Note : Clock movement bears stamp "Pons Medaille D'Or 1827"
Estimate: £3,000.00 - £4,000.00



Lot: 1407

A 19th Century American oak cased mantel clock by The Ansonia Clock Company, the 4.5ins diameter cream chapter ring with Roman numerals to the eight day movement striking on a gong, contained in case with shaped pediment, on bracket feet, 17.25ins high (lacking pendulum)
Estimate: £100.00 - £150.00



Lot: 1408

A mid 19th Century rosewood mantel clock, the 8ins diameter painted metal dial inscribed "Benson, Ludgate Hill, London" to the eight day two train fusee movement striking and repeating on a bell, contained in Gothic pattern case inlaid with brass scrollwork and mouldings, on gilt brass ball feet, 19.75ins high (with later finials and handles)
Estimate: £600.00 - £800.00



Lot: 1404

A late 19th Century German walnut cased mantel clock by Winterhalder & Hofmeier, the 4.5ins diameter silvered dial with Roman numerals to the eight day two train movement striking on two gongs, contained in walnut moulded top case of 18th Century English design, 12.5ins high
Estimate: £300.00 - £500.00



Lot: 1409

A mid 19th Century stained fruitwood cased "Four Glass" mantel timepiece by Phillips Brothers, 31 Cockspur Street, Haymarket, London, the arched silvered dial with Roman numerals to the associated eight day single train fusee movement, contained in stained fruitwood (formerly ebonised) rectangular case with stepped top, moulded front cant corners and on bun feet (with later plain wooden door to back - interior of case adjusted and with cut-out to take larger pendulum) Note : Phillips Brothers recorded working London 1839-1869
Estimate: £500.00 - £700.00



Lot: 1405

A late 19th Century German walnut cased mantel clock by Winterhalder & Hofmeier, the square brass dial with 5.25ins diameter silvered chapter ring with Roman numerals to the eight day two train movement striking on two gongs, contained in walnut rectangular case with moulded top, 12.75ins high



Lot: 1410

An early 19th Century rosewood cased "Four Glass" mantel timepiece by Brockbanks & Atkins of London, No. 2000, the silvered dial with Roman numerals to the eight day single train chain and fusee movement, with passing strike on one bell, contained in rosewood case of Gothic design with pinnacled top and shaped front door with carved fleur-de-lis, Gothic pattern glazed panels to sides and rear and on later bun feet, 9.75ins high Note : Brockbanks & Atkins recorded working London 1815-1835/39
Estimate: £1,500.00 - £2,000.00



Lot: 1414

A Victorian rosewood cased dial wall clock by J. Pace of London, the 12ins diameter cream dial to the eight day fusee movement, contained in case of plain design, the bezel inlaid in mother of pearl with floral sprays, 16.5ins high (slight damage)
Estimate: £150.00 - £200.00



Lot: 1415

A late 19th / early 20th Century German mahogany cased dial wall clock by Winterhalder and Hofmeier, the 10ins diameter cream dial with Roman numerals to the fusee movement, contained in case with plain turned bezel, 13ins high
Estimate: £150.00 - £200.00



Lot: 1411

A late 18th Century mahogany bracket clock by Thomas Oliver of London, the whole of small proportions, the plain arched silvered dial with Roman numerals and strike/silent dial to arch to the eight day two train fusee movement striking and repeating on a bell with engraved back plate, contained in mahogany and gilt brass mounted case of arched form with large rectangular pad to top, brass folding handle, arched glazed side panels, on ogee bracket feet, 12.25ins high Note : Thomas Oliver recorded working in New Bond Street, London 1780-1795 and in partnership with Joseph West until 1785
Estimate: £2,000.00 - £3,000.00



Lot: 1416

A late 19th / early 20th Century mahogany cased drop dial wall clock by J.W. Benson of London, the 12ins diameter cream dial with Roman numerals to the eight day chain and fusee movement, contained in plain case with plain turned bezel, 17ins high (veneer chipping to drop section)
Estimate: £300.00 - £400.00



Lot: 1418

A late Victorian aneroid barometer by Cail & Sons, Newcastle on Tyne, with 6ins diameter white enamelled dial, in lacquered brass case mounted on a carved oak back board, 11ins diameter
Estimate: £80.00 - £120.00



Lot: 1413

A late 19th/early 20th Century brass cased ship's bulkhead timepiece, the 7ins diameter white enamelled dial with Roman numerals inscribed John Lille & Son Ltd, London to the eight day movement, contained in brass and plated case with bevelled glass to front, 9ins diameter, and mounted on turned wooden back plate
Estimate: £150.00 - £200.00



Lot: 1419

A 19th Century mahogany cased wheel barometer, hydrometer and thermometer, by Player of Wallingford, with 8ins diameter silvered dial, contained in case with scrolled cresting, 38ins high
Estimate: £120.00 - £160.00



Lot: 1420

A mid 19th Century mahogany cased stick barometer by Dollond of London, the plain arched top enclosing silvered scales with adjustable vernier, contained in plain mahogany case with figured veneered face and turned cistern cover, 26ins high Note : Probably by George Dollond, 59 St. Pauls Churchyard 1804-1856, later 61 Paternoster Row 1854-1856 Estimate: £1,200.00 - £1,500.00

bracket feet, 91ins high

Note:

Robert Greaves recorded working Macclesfield 1786 Estimate: £400.00 - £600.00



Lot: 1422

A late 18th/early 19th Century "North Country" stripped pine longcase clock, the 14ins square painted dial with subsidiary seconds dial and calendar aperture to the eight day two train movement striking on a bell, contained in case with plain top, turned pillars to hood and shaped trunk door, on bracket feet, 80ins high Estimate: £250.00 - £400.00



Lot: 1425

A late 18th Century mahogany longcase clock by David Bowen of Swansea, with 12ins arched brass dial (formerly silvered), the arch engraved "High Water at Swansea Key" and showing phases of the moon, with subsidiary seconds dial and date aperture to the eight day two train movement striking on a bell, contained in mahogany case with moulded and dentil cornice, turned and fluted columns to hood with Corinthian capitols, shaped trunk door and with fluted and reeded cant corners, on bracket feet, 83ins high (pendulum damaged) Note : David Bowen recorded working in Swansea as a Clockmaker, died 1791 Estimate: £500.00 - £700.00



Lot: 1423

A late 18th/early 19th Century oak longcase clock by Kelvey of Gainsborough, the 12ins arched white painted dial decorated with floral sprays and birds, with subsidiary seconds dial to the eight day two train movement striking on a bell, contained in case with three ball finials, scrolled cresting, turned and fluted pillars to hood, the trunk with canted front corners, 86ins high Note : Could be C. Kelvey of Gainsborough, dates unknown Estimate: £300.00 - £400.00



Lot: 1426

An unusual 18th Century black japanned longcase clock by Jonathan Baldwin of Feversham, No. 375, the 12ins arched brass dial with pierced gilt brass spandrels, silvered chapter ring with Roman and Arabic numerals and with subsidiary seconds dial and date aperture to the eight day two train movement striking on a bell, contained in associated japanned case with turned finials, shaped cresting and split turned columns to hood, the front decorated with leaves, 88ins high (case redecorated at later date)



Lot: 1424

A late 18th Century "North Country" mahogany longcase clock by Robert Greaves of Macclesfield, the 14ins arched brass dial with wide silvered chapter ring and dial centre with Roman and Arabic numerals and showing phases of the moon and calendar to arch to the eight day two train movement striking on a bell, contained in figured mahogany case with scrolled cresting, blind fret frieze inlaid with oval paterae, turned and fluted columns to hood and with shaped trunk door flanked by fluted quarter columns, on

Note:

John Baldwin, a very competent maker, thought to have been born in 1677, apprenticed to Stephen Rayner 1691-1698 recorded working in Faversham, Kent until 1739 Estimate: £700.00 - £900.00



Lot: 1427

An 18th Century mahogany longcase clock by Isaac Papavoine, Dukes Court, London, the 12ins arched brass dial with silvered chapter ring with Roman and Arabic numerals, subsidiary seconds dial and date aperture, matted dial centre and with gilt brass spandrels within engraved leaf borders to the eight day two train movement striking on a bell, contained in associated mahogany case with fretted cresting, plain turned pillars to hood, arched trunk door, on bracket feet, 90ins high

Note: Isaac Papavoine recorded as member of The Clockmakers Company 1687-1710
Estimate: £900.00 - £1,200.00



company 1684, Master 1709, Died 1729. Engraved brass plaque to inside of case provides full provenance - maker of case and an ancestor of vendor
Estimate: £1,500.00 - £2,000.00

Lot: 1430

A walnut longcase clock of late 17th Century design, the 10ins square brass dial with narrow silvered chapter ring with Roman numerals and Arabic minute divisions, subsidiary seconds dial and date aperture, matted dial centre and with cast winged cherubs head spandrels to the eight day two train movement with outside count wheel striking on a bell, contained in walnut case with cross grained mouldings, the rising hood with spiral turned columns to sides and fretted and carved scroll and shell pattern cresting, moulded cornice and blind fret frieze, plain trunk door, rounded cross grained mouldings, on turned feet, 80ins high
Estimate: £1,800.00 - £2,400.00



Lot: 1428

An 18th Century mahogany longcase clock by Arlan Dobson of London, the 12ins arched brass dial with gilt brass spandrels, the silvered chapter ring with Roman and Arabic numerals and with subsidiary seconds dial and date aperture and strike/silent lever to arch, to the eight day two train movement striking on a bell, contained in case with arched cresting, turned and reeded pillars to hood, arched trunk door, on bracket feet, 92ins high Note : Arlander Dobson recorded working Covent Garden, London 1744, died 1772
Estimate: £1,000.00 - £1,500.00



Lot: 1431

An 18th Century walnut longcase clock by Jno. Martin of Bristol, the 12ins arched brass dial with wide silvered chapter ring with Roman and Arabic numerals, subsidiary seconds dial and date aperture, and with calendar and showing phases of the moon to arch to the eight day two train movement striking on a bell, contained in walnut case with arched and moulded cornice and plain turned pillars to hood, arched trunk door with matched figured veneered panels and crossbanded, on conforming plinth base, 88ins high

Note:
John Martin listed as a watchmaker in Bristol 1722-1734
Estimate: £2,750.00 - £3,500.00



Lot: 1429

An oak longcase clock containing an early 18th century movement by George Etherington of London, the 10ins arched brass dial with arch engraved with sunburst and strike/silent lever above chapter ring with Roman and Arabic numerals to the eight day two train movement striking on a bell, the later oak case made by Colonel H.J.W. Barrow, the arched and moulded cresting with three squirrel finials, pierced brass frieze, pierced side panels, split turned columns to hood, the arched trunk door with shaped lentical glass, 79ins high Note : George Etherington recorded as admitted to the Clockmakers



Lot: 1432

An early 19th Century mahogany longcase "Regulator" by William Henfrey, Northgate, Leicester, No. 1804, the 13.25ins diameter silvered dial with Roman numerals and subsidiary seconds dial to the eight day movement with deadbeat escapement and with tapered brass plates and plain turned pillars, the pendulum with wooden rod and heavy iron bob and with single brass cased weight, contained in figured mahogany case with arched and moulded top, shaped trunk door and astragal panelled plinth, on bracket feet, 74ins high Note : William Henfrey recorded working in Leicester as a Clock and Watch Maker in 1815
Estimate: £4,000.00 - £5,000.00



Lot: 1438

A Serabend long rug woven in blue and ivory with all-over boteh repeats on a madder ground within stylised borders, 63ins x 39ins, and a rug of Caucasian design, 55ins x 29ins
Estimate: £100.00 - £150.00



Lot: 1439

A Kuba Caucasian rug woven in red and white with various motifs on a dark blue ground within conforming borders, 64ins x 40ins
Estimate: £150.00 - £200.00



Lot: 1435

A pair of early 20th Century Kashan pictorial rugs, woven in colours with identical mountainous landscape views within conforming borders, 6ft 10ins x 4ft 6ins and 6ft 7ins x 4ft 6ins respectively (slight wear to sides and with some losses to the end of one)
Estimate: £1,000.00 - £1,500.00



Lot: 1440

A mid 20th Century Tabriz pictorial rug woven in colours to a design in the manner of J. Ingres (1780-1867), 38ins x 26ins
Estimate: £350.00 - £500.00



Lot: 1436

A Hamadan long rug woven in colours with all-over floral repeat on a madder ground within narrow borders, 81ins x 36ins
Estimate: £80.00 - £120.00



Lot: 1441

An unusual antique Kirman double prayer rug with cut pile and woven in colours with facing images of the Dervish Nur Ali Shah, 43.5ins x 31ins
Estimate: £2,000.00 - £3,000.00



Lot: 1437

A Beluch long rug woven in red and ivory with all-over boteh repeats on a black ground within conforming borders, 77ins x 36ins
Estimate: £80.00 - £120.00



Lot: 1442

A mid 20th Century Qum silk pictorial rug woven in colours with hunting scenes on a grey ground within leaf and floral borders, 60ins x 41ins
Estimate: £1,200.00 - £1,600.00



Lot: 1444

A Caucasian "Chelaberd" carpet woven in muted colours with three cruciform motifs on a dark blue ground within conforming borders, 9ft 8ins x 5ft (with repairs)

Estimate: £800.00 - £1,200.00



Lot: 1450

An antique Turkmen or Beluch carpet woven in brown and ivory with four rows of octagonal guls each with "H" motifs on a brown ground within conforming borders, 8ft 5ins x 6ft (slight repair)

Estimate: £200.00 - £300.00



Lot: 1446

An antique Fakhralu Caucasian carpet woven in colours with three medallions on a red ground within conforming borders, 8ft x 4ft 6ins (extensively damaged and repaired)

Estimate: £350.00 - £500.00



Lot: 1451

A Bokhara carpet woven in black and ivory with five rows of guls on a cochineal red ground within narrow borders, 9ft 5ins x 6ft 4ins

Estimate: £150.00 - £200.00



Lot: 1447

A rug of Caucasian design woven in muted colours and ivory with three cruciform motifs on a madder ground within conforming borders, 68ins x 47ins

Estimate: £100.00 - £150.00



Lot: 1452

An antique West Persian carpet woven in muted colours and ivory with double headed oval spandrels and conforming medallions on a madder ground with numerous abrash stripes within conforming borders, 7ft 4ins x 5ft 5ins (possibly Bakhtiar - slight damage)

Estimate: £250.00 - £400.00



Lot: 1448

Two modern carpets of Caucasian design woven in colours with motifs on a madder ground within conforming borders, 8ft 5ins x 5ft 9ins, and 6ft 2ins x 4ft 2ins respectively

Estimate: £150.00 - £200.00



Lot: 1453

A pair of Kirman rugs woven in colours with double headed lozenge medallions, conforming spandrels and filler motifs on a dark blue ground within conforming borders, each 82ins x 54ins

Estimate: £700.00 - £1,000.00



Lot: 1449

A carpet of Giordes design woven in colours with flowers on a dark blue open field within conforming stylised floral borders, 6ft x 4ft

Estimate: £200.00 - £300.00



Lot: 1454

An antique Isfahan carpet woven in colours with central medallion of unusual design and with tree motifs on a pale tan ground within conforming borders, 6ft 11ins x 4ft 10ins (with slight damage and wear)

Estimate: £900.00 - £1,200.00



Lot: 1455

An antique Kirman pictorial rug woven in muted colours with scenes from the story of "Leili & Medjnoun" after Nizami, on a red ground within conforming borders and woven to top with date of 1917, 84ins x 54ins
Estimate: £3,000.00 - £4,000.00



Lot: 1458

A set of eight Regency grained as rosewood and brass inlaid dining chairs, the scrolled backs with narrow centre crest rails, pierced and shaped splats, cane panelled seats with green dralon seat squabs, on sabre front legs
Estimate: £1,250.00 - £1,600.00



Lot: 1459

A set of six George III mahogany dining chairs (including one armchair) with narrow panelled crest rails, reeded uprights and X-pattern splats, the seats upholstered in pale green brocade, on slender turned and reeded front legs
Estimate: £450.00 - £600.00



Lot: 1460

A set of six George III mahogany dining chairs (including two armchairs) of Sheraton design with arched crest rails and moulded splats, the drop-in seats upholstered in striped cloth, on square tapered front legs
Estimate: £300.00 - £500.00



Lot: 1461

A set of four George IV mahogany dining chairs with plain crest rails and reeded splats, the seats upholstered in olive green dralon, on spiral moulded front legs (with repairs)
Estimate: £150.00 - £200.00



Lot: 1462

A set of eight early 20th Century beechwood framed dining chairs in the Carolean manner (including two armchairs) with leaf capped scroll arms, the square backs and seats upholstered in floral tapestry and fringed, on turned underframes



with conforming H-pattern stretchers
Estimate: £200.00 - £300.00

Lot: 1463

A pair of 18th Century Italian walnut dining chairs with shaped crest rails, black lacquered vertical splats, decorated in gilt with scrolls, and with caned backs and seats, on cabriole front legs with shaped stretchers (slight damage and repairs)
Estimate: £200.00 - £300.00



Lot: 1464

A pair of Victorian cast iron high back garden chairs of "Coalbrookdale" design, each 52.5ins high (rusted and with no apparent maker's marks or stamps)
Estimate: £600.00 - £800.00



Lot: 1465

A pair of French grey painted open arm fauteuils, the backs, seats and arm pads upholstered in green cloth, on cabriole front legs
Estimate: £150.00 - £200.00



Lot: 1466

A pair of early 20th Century stained wood wing back easy chairs of 18th Century design upholstered in old gold dralon, on carved cabriole legs and claw and ball feet
Estimate: £120.00 - £160.00



Lot: 1467

A Victorian mahogany framed easy chair, the shaped back with twin C-scroll leaf capped uprights, upholstered in brown dralon, the back buttoned, on cabriole front legs and castors
Estimate: £250.00 - £350.00



Lot: 1468

An early Victorian mahogany framed scroll back open arm easy chair upholstered in old gold and blue floral pattern cloth, the back buttoned, with open scroll arms, on turned front legs and castors
Estimate: £150.00 - £200.00

Estimate: £100.00 - £150.00



Lot: 1474

An early Victorian mahogany framed open arm library armchair, the showwood frame with carved cresting and scrolled arm terminals, on turned and moulded front legs and castors, the seat, back and arm pads upholstered in green dralon (damaged)
Estimate: £150.00 - £200.00



Lot: 1469

A Victorian mahogany framed spoon back easy chair with moulded showwood frame, upholstered in green dralon, the back buttoned, on turned front legs and castors
Estimate: £150.00 - £200.00



Lot: 1475

A Victorian mahogany Captains chair with horse-shoe pattern back and carved splat, the back and seat upholstered in red vinyl, the back buttoned, on cabriole front legs and castors, and a late 19th Century oak swivel armchair with curved back and pierced splat, caned circular seat, on splayed legs and castors (slight damage)
Estimate: £150.00 - £200.00



Lot: 1470

A Victorian walnut framed spoon back nursing chair, the showwood frame with carved leaf cresting, the seat and back upholstered in original needlework, beadwork and cut woolwork floral upholstery, on turned front legs
Estimate: £250.00 - £400.00



Lot: 1476

A Victorian stained beechwood showwood framed spoon back easy chair upholstered in red velvet and buttoned, on cabriole front legs
Estimate: £60.00 - £80.00



Lot: 1471

A Victorian walnut framed spoon back open arm easy chair with carved and moulded showwood frame, upholstered in green dralon, the back buttoned, on cabriole front supports and castors
Estimate: £150.00 - £200.00



Lot: 1477

An early 20th Century oak wing back easy chair of "Queen Anne" design, upholstered in floral cut moquette and fringed, on turned legs with shaped stretchers
Estimate: £100.00 - £150.00



Lot: 1472

A Victorian rosewood framed spoon back open arm easy chair upholstered in old gold brocade, the back buttoned, with moulded front arm supports and cabriole legs
Estimate: £150.00 - £200.00



Lot: 1478

A 19th Century ash and elm Windsor armchair with plain crest rail, slatted back and wood seat, on turned legs
Estimate: £100.00 - £150.00



Lot: 1473

A late Victorian rosewood open armchair with shaped back inlaid with boxwood and ivorine marquetry, with spindle turned splats, the circular seat upholstered in green striped cloth, on cabriole front legs, and a similar chair



Lot: 1479

A 20th Century Italian chromed metal and black plastic swivel office armchair by Segis, designed by Carlo Bimbi (slight wear)
Estimate: £150.00 - £200.00



Lot: 1485

A Liberty & Co oak "Ashanti" stool, 19.75ins wide x 11.25ins deep x 20.5ins high (applied "Liberty" label to underside)
Estimate: £100.00 - £150.00



Lot: 1480

An early Victorian rosewood framed low back three seat settee upholstered in purple weave, with scrolled arms, on turned front legs and castors, 84ins wide (with loose seat squab for same)
Estimate: £500.00 - £700.00



Lot: 1486

A Chinese elm rectangular stool with angled legs, 18ins x 9ins x 20ins high, a pine cabinet fitted nine drawers, 33ins wide x 9.5ins deep x 19.5ins high, and a Victorian grained pine blanket chest with brass carrying handles to sides, 38ins wide x 18ins deep x 17.5ins high (all with slight damage and wear)
Estimate: £100.00 - £150.00



Lot: 1481

A late Victorian three seat settee with low back upholstered in pale floral cloth and partly buttoned, on turned front legs and castors, 63ins wide
Estimate: £200.00 - £300.00



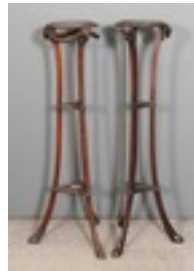
Lot: 1487

A pair of early Victorian mahogany framed fire screens with apex tops, each inset with floral woolwork panels, on splayed trestle base and ball feet, 22ins wide (one damaged to leg)
Estimate: £120.00 - £160.00



Lot: 1482

A late Victorian two seat settee with low curved back upholstered in green cloth and buttoned, on turned front legs and castors, 57ins wide
Estimate: £150.00 - £200.00



Lot: 1488

A matched pair of circular torcheres of "Classical" form, the tops with leaf carved edges, on square splayed supports with carved ram's head pattern capitols and cloven hoof pattern feet, 50ins high (one torchere lacking carved swag ornament to frieze)
Estimate: £200.00 - £300.00



Lot: 1483

A Victorian chaise longue upholstered in old gold patterned cloth, the back buttoned, on turned legs and castors, 72ins long
Estimate: £200.00 - £300.00



Lot: 1489

A George III mahogany and brass bound octagonal two-handled wine cooler on stand with square splayed supports, 18ins square x 25ins high (lacking fitted interior)
Estimate: £700.00 - £1,000.00



Lot: 1490

An early Victorian walnut rectangular cellaret of sarcophagus form, the flat top enclosing lined interior, on plinth base, 31ins wide x 23ins deep x 18ins high (split to top)
Estimate: £300.00 - £400.00



Lot: 1495

A Victorian mahogany cylindrical bedside or pot cupboard with white marble slab inset to top, enclosed by a single door, on octagonal plinth base, 15ins diameter x 29ins high (slight damage)
Estimate: £150.00 - £200.00



Lot: 1491

A Victorian stained pine storage box stencilled to front "1847", 24ins x 15ins x 14ins high, and a Victorian grained wood and metal banded storage box, 24ins x 14ins x 12ins high
Estimate: £100.00 - £150.00



Lot: 1496

A George III mahogany rectangular tray top bedside cabinet, the shaped tray top with handle cut-outs enclosed by a pair of plain doors and with deep drawer under, on square legs, 20ins wide x 18ins deep x 30ins high (adapted - doors warped and damaged)
Estimate: £150.00 - £200.00



Lot: 1492

A late Victorian walnut rectangular two division Canterbury of large proportions with moulded top rail and turned uprights, on bun feet and castors, 29ins x 21ins x 21ins high
Estimate: £250.00 - £350.00



Lot: 1497

A late Victorian mahogany hanging corner cupboard of Georgian design with angled dentil, moulded and fretted cornice, fitted two shaped painted shelves enclosed by a single astragal glazed door, 22ins wide x 12ins deep x 43.5ins high
Estimate: £80.00 - £120.00



Lot: 1493

A mahogany four division Canterbury of Victorian design with slightly dished top, fitted single drawer, on turned legs, 20ins wide x 15ins deep x 25ins high (slight damage)
Estimate: £100.00 - £150.00



Lot: 1498

An old oak Delft rack with moulded cornice, 38.5ins wide x 7ins deep x 35ins high
Estimate: £150.00 - £200.00



Lot: 1494

A Victorian mahogany three tier bow-front whatnot with gilt brass gallery, fitted single drawer, on moulded uprights and turned legs and castors, 24ins wide x 17ins deep x 40ins high
Estimate: £250.00 - £350.00



Lot: 1499

A nest of three Edwardian mahogany oval occasional tables on slender turned supports and splayed trestle feet, 26.5ins x 15.5ins x 26ins high
Estimate: £150.00 - £200.00



Lot: 1500

An unusual 1930s stained beechwood table by Davrard, the folding top inset with floral tapestry, on trestle base, 95ins x 21.5ins x 27ins high
Estimate: £100.00 - £150.00



Lot: 1505

A near Eastern stained wood octagonal occasional table carved with leaf and floral ornament and inlaid in mother of pearl and Musharabeyeh panels to sides, on turned feet, 18ins square x 22ins high (lacking one foot)
Estimate: £200.00 - £300.00



Lot: 1501

A beechwood butcher's block - "Rushbrooke's Albion Block", 36ins x 18ins x 35ins high, with manufacturer's applied metal plaque to frieze
Estimate: £200.00 - £300.00



Lot: 1506

An Edwardian circular occasional table inlaid with boxwood stringing and satinwood banding, on square tapered legs and castors, 27ins diameter x 28ins high
Estimate: £120.00 - £160.00



Lot: 1502

A 19th Century mahogany circular drum/occasional table in the "Irish" manner with plain top, the frieze with four real and four fold-out quadrant drawers with turned knob handles, on heavy turned and carved centre column, the tripod base with scroll ornament and with carved claw and ball feet and castors, 22ins diameter x 29ins high
Estimate: £800.00 - £1,000.00



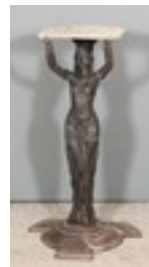
Lot: 1507

A Near Eastern stained wood octagonal occasional table, with pierced folding base, 24ins square x 25ins high (some damage)
Estimate: £70.00 - £100.00



Lot: 1503

A mahogany circular drum table of George III design with gilt tooled leather inset to top with square edge, the frieze fitted four real and four dummy drawers, on slender tapered centre column and reeded tripod base with cast brass paw feet and castors, 33ins diameter x 29.5ins high
Estimate: £500.00 - £700.00



Lot: 1508

A Victorian cast iron table base modelled with a standing Egyptian woman, 28ins high
Estimate: £400.00 - £600.00



Lot: 1504

An early 19th Century Russian figured mahogany circular occasional table of "Empire" design with stepped top, on three square splayed supports and inswept platform base, 24ins diameter x 31ins high
Estimate: £300.00 - £500.00



Lot: 1509

A Victorian white painted cast iron circular "Pub" table with mahogany top, the base with pierced frieze and "Britannia" supports on paw feet, 22ins diameter x 30ins high
Estimate: £120.00 - £160.00



Lot: 1510

An 18th Century oak side table fitted three drawers on square legs, 37ins wide x 20ins deep x 30ins high (with replacement shaped panel to frieze)
Estimate: £120.00 - £160.00



Lot: 1511

An 18th Century oak side table with moulded top, panelled sides, fitted single frieze drawer, on turned legs, 34.5ins wide x 19ins deep x 29ins high (slight damage and repair)

Estimate: £100.00 - £150.00



Lot: 1516

A George IV rosewood sofa table inlaid with brass stringings and floral ornament, fitted two frieze drawers, on rectangular centre column and quadruple splayed supports with brass toes and castors, 58ins wide x 26ins deep x 27.5ins high (some brass stringings missing and damaged)

Estimate: £300.00 - £500.00



Lot: 1512

A late Victorian mahogany Sutherland table, the ebonised base with twin turned end supports and trestle foot, 24ins x 28ins x 25ins high, and an Edwardian mahogany oval two tier occasional table, 29ins x 20ins x 28.5ins high

Estimate: £120.00 - £160.00



Lot: 1517

A 19th Century French figured walnut rectangular work table, the lifting top with shaped and moulded edge, the sides applied with shaped and fretted ornament, on shaped and fretted end supports and conforming stretcher, 22ins wide x 15ins deep x 28ins high

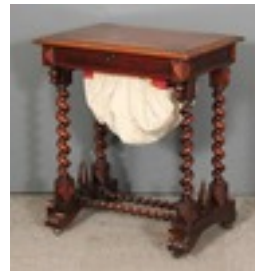
Estimate: £250.00 - £400.00



Lot: 1513

A Victorian rosewood rectangular library table fitted two drawers, on bulbous reeded end supports and trestle base with scrolled feet, 45ins wide x 22ins deep x 28.5ins high

Estimate: £300.00 - £400.00



Lot: 1518

An early Victorian rosewood rectangular work table, the lifting top with contrasting marquetry banding enclosing fitted interior with fretted covers, on twin spiral turned end supports with conforming stretchers, on trestle feet with scrolled toes and castors, 24.5ins x 17.75ins deep x 28.5ins high (top marked and minor moulding damage in places)

Estimate: £150.00 - £200.00



Lot: 1514

A George III mahogany "Butterfly" Pembroke table, fitted one real and one dummy drawer, on square legs and castors, 32ins x 30ins x 28ins high (small split to top)

Estimate: £70.00 - £100.00



Lot: 1519

A mahogany rectangular display table of Edwardian design, the top inlaid with bandings and inset with bevelled glass panel, on square legs, 23ins x 16ins x 30ins high (locked - no key present), containing a selection of shells and other ornaments, various

Estimate: £120.00 - £160.00



Lot: 1515

A George III rosewood sofa table inlaid with wide satinwood banding and boxwood stringings with D-shaped flaps, fitted two real and two dummy drawers, on rectangular end supports and splayed legs with brass toes and castors, 58ins x 28ins x 29ins high

Estimate: £1,000.00 - £1,500.00



Lot: 1520

A Victorian figured walnut and gilt metal mounted rectangular card table in the "French" style, the banded folding top enclosing blue baize lined interior, on turned and fluted legs, 40ins x 21ins x 29ins high

Estimate: £400.00 - £600.00



Lot: 1521

A George III mahogany semi circular card table with baize lined and crossbanded folding top, on square tapered and moulded legs, 37ins wide x 16ins deep x 28ins high (slight damage)
Estimate: £200.00 - £300.00



Lot: 1522

A William IV mahogany D-shaped tea table with plain folding top, plain apron, on plain heavy turned central column and swept-in rectangular base with scroll toes and castors, 38ins wide x 19ins deep x 30ins high (top slightly marked and scuffed in places and with small bits of veneer missing in places) Note: By repute removed from 114 Cambridge Street, Pimlico, London, home of Aubrey Beardsley and his sister, Mabel, 1894-1895. The house was then purchased by the Great Grandmother of the vendor and thence by family descent
Estimate: £150.00 - £200.00



Lot: 1523

An early George III mahogany rectangular tea table with plain folding top, fitted single frieze drawer, on turned legs and pad feet, 31.5ins wide x 15.5ins deep x 28.5ins high (top split)
Estimate: £150.00 - £200.00



Lot: 1524

A Victorian figured walnut writing table, the top with quartered matched veneer and wide crossbanding, fitted single frieze drawer, on turned and fluted legs with low cross stretcher and castors, 31ins wide x 18ins deep x 28ins high
Estimate: £300.00 - £400.00



Lot: 1525

A Victorian mahogany writing table, fitted single frieze drawer, on octagonal moulded legs and castors, 36ins wide x 19.5ins deep x 30.5ins high
Estimate: £250.00 - £350.00



Lot: 1526

A mahogany rectangular kneehole desk of Georgian design with gilt tooled wine leather inset to top, fitted three drawers to the frieze and dummy drawers to reverse, the pedestals each fitted three drawers to one side and cupboard to reverse enclosed by an astragal panelled door, on plinth bases, 60ins x 36ins x 31ins high
Estimate: £1,250.00 - £1,600.00



Lot: 1527

A Victorian mahogany kneehole desk, the top inset with green leather and with recessed centre, fitted eight drawers, on plinth bases, 48ins wide x 22ins deep x 28ins high (faded to top and with slight damage and wear)
Estimate: £150.00 - £200.00



Lot: 1528

A George IV "Irish" mahogany Pembroke supper table, fitted one real and one dummy drawer, on turned central column and quadruple splayed supports with reeded toes and castors, 42ins x 49ins x 28.5ins high
Estimate: £200.00 - £300.00



Lot: 1529

A pair of George IV "Irish" mahogany Pembroke supper tables (forming a two pedestal dining table) each fitted one real and one dummy drawers, on turned and moulded centre column and leaf capped quadruple splayed legs with carved paw feet, each 44ins x 38.5ins, overall 77ins x 44ins extended x 28ins high
Estimate: £1,200.00 - £1,500.00



Lot: 1530

An oak refectory table of "17th Century" design, the cleated three panel top on twin turned end supports and trestle base, 90ins x 36ins x 30ins high
Estimate: £400.00 - £700.00



Lot: 1531

An old oak refectory table of Jacobean design, with cleated top, on baluster turned end supports and trestle base, 77ins x 29ins x 30ins high (top split and repaired)

Estimate: £250.00 - £350.00



Lot: 1536

An early 20th Century mahogany oval extending dining table with one extra leaf, the top with gadrooned edge, on cabriole legs with claw and ball feet and castors, 71ins extended x 42ins x 30.5ins high, and a set of six mahogany dining chairs of Georgian design with shaped crest rails and pierced splats, the drop-in seats upholstered in red vinyl, on square tapered front legs

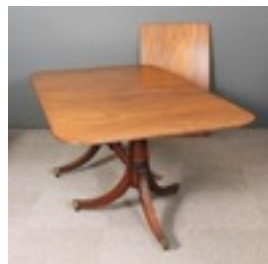
Estimate: £300.00 - £400.00



Lot: 1532

A Victorian pitch pine refectory table with plain top, on shaped and fretted end supports and trestle feet, 60ins x 24ins x 30ins high (top carved with initials and patched)

Estimate: £250.00 - £350.00



Lot: 1537

A mahogany twin pedestal dining table of George III design with one extra leaf, the top with reeded edges, on plain turned columns and triple splayed and reeded supports with brass caps and castors, 98ins x 42ins x 29ins high

Estimate: £200.00 - £300.00



Lot: 1533

A late 19th/early 20th Century mahogany billiards table/dining table by E.F. Riley of Accrington, the top with four leaves with moulded edge, the billiards table with slate bed, on four square tapered and fluted supports, 77ins x 41ins x 29ins high, complete with five cues, rest, score board, balls, etc

Estimate: £250.00 - £400.00



Lot: 1538

An 18th/19th Century French fruitwood drawleaf kitchen table with cleated five plank top, fitted single drawer, on square tapered supports, 66ins x 32.5ins x 30.5ins high

Estimate: £400.00 - £600.00



Lot: 1534

A good George III mahogany extending 'Campaign' dining table in the 'Gillows' manner with four extra leaves for same, the top with reeded edge and rounded corners, on eight turned and reeded detachable legs with brass top collars and castors, 136ins x 57ins extended, x 29ins high Note: By repute, formerly the property of Noel Coward (1899-1973)

Estimate: £5,000.00 - £7,000.00



Lot: 1539

A 19th Century French mahogany dropleaf extending dining table with three later leaves for same, 89ins extended x 43ins x 28.5ins high

Estimate: £300.00 - £500.00



Lot: 1535

A late George III mahogany extending dropleaf dining table with two extra leaves for same, the top with reeded edge and rounded corners, on turned legs and castors, 48ins x 53ins extended x 27ins high (in poor condition and lacking clips)

Estimate: £400.00 - £600.00



Lot: 1540

A Continental beechwood drawleaf table of French design, the parquetry top with shaped edge, on painted cabriole legs, 57ins x 24ins x 29ins high

Estimate: £100.00 - £150.00



Lot: 1541

A George III mahogany sofa table fitted two real and two dummy drawers, on rectangular end supports and splayed feet, 58ins wide x 30ins deep x 28ins high (top split and faded throughout)
Estimate: £300.00 - £500.00



Lot: 1542

A 1930s lady's figured walnut kneehole desk of 18th Century design with angled back, recessed centre and gadroon mounts, the top inset with brown leather, fitted six drawers, on cabriole legs and carved paw feet, 48ins wide x 25ins deep x 30ins high
Estimate: £200.00 - £300.00



Lot: 1543

A Victorian walnut Davenport with serpentine front, the stationery rack with brass gallery above green leather lined writing surface, fitted four real and four dummy drawers to sides, with carved cabriole front supports, on platform base, 22ins wide x 22ins deep x 35ins high
Estimate: £250.00 - £400.00



Lot: 1544

A Victorian mahogany Davenport with stationery compartment to top, the brown leather lined slope enclosing single drawer, fitted four real and four dummy drawers to sides with turned columns to front, on trestle base and castors, 21ins wide x 21ins deep x 36ins high (with slight damage)
Estimate: £200.00 - £250.00



Lot: 1545

A late 19th Century Anglo Indian blackwood serpentine fronted chiffonier, carved throughout with scrolled leaves, figures and face masks, with shaped back enclosed by a pair of doors, on animal head pattern front feet, 32ins wide x 15ins deep x 43ins high Note: From Bombay Presidency, circa 1870 - See Amir Jaffer "Furniture from British India and Ceylon" V. and A. Publications 2001 - Item 165, Page 349 for similar example



Estimate: £500.00 - £700.00

Lot: 1546

William IV mahogany chiffonier, the upper part with shaped back carved with anthemion and leaf scroll ornament, fitted one shelf supported by S-scroll supports, fitted one frieze drawer with moulded front and with rectangular flowerhead patera to centre above cupboards enclosed by a pair of figured panelled doors and flanked by plain turned supports and on plinth base, 42ins wide x 17ins deep x 50ins high
Estimate: £350.00 - £450.00



Lot: 1547

An early Victorian mahogany chiffonier bookcase with split turned columns to front, fitted two frieze drawers, cupboards under enclosed by a pair of panelled doors, 42.5ins wide x 15ins deep x 56ins high
Estimate: £120.00 - £160.00



Lot: 1548

An early Victorian mahogany chiffonier, the upper part with carved and scrolled cresting, fitted single shelf, the base with twin cushion moulded frieze drawers covered under, enclosed by a pair of arched panelled doors, on plinth base, 48ins wide x 16ins deep x 66ins high
Estimate: £100.00 - £150.00



Lot: 1549

A modern green painted and gilt decorated bedside cabinet with panelled sides and front, fitted one frieze drawer, cupboard under enclosed by a single panelled door, 23.75ins x 20ins x 23ins high, a pair of similar headboards, 39ins x 42ins, and a similar rush seated occasional chair
Estimate: £100.00 - £150.00



Lot: 1550

An 18th Century elm plank coffer, 42ins wide x 15ins deep x 25ins high
Estimate: £100.00 - £150.00



Lot: 1551

A good Victorian figured walnut, inlaid and gilt brass mounted bow-fronted credenza with moulded edge to top and with gilt brass leaf mouldings and scroll, floral and crossed trophy mounts, fitted central cupboard enclosed by a single panelled door with matched quarter veneer door panels and boxwood arabesque marquetry to centre, flanked by conforming panels and display cabinets with wine velour covered shelves and each enclosed by a plain glazed bow-fronted door, the shaped plinth base with gilt brass rectangular leaf paterae, 66ins wide x 16ins deep x 41ins high
Estimate: £1,800.00 - £2,400.00



Lot: 1555

A George III mahogany serpentine fronted sideboard, fitted single frieze drawer flanked by deep drawers, on six square tapered legs and spade toes, 71.5ins wide x 26.5ins deep x 37ins high
Estimate: £200.00 - £300.00



Lot: 1556

An Edwardian mahogany cabinet inlaid with satinwood banding and boxwood stringing, the top inset with red leather, fitted two frieze drawers, cupboard under enclosed by a pair of panelled doors, on bracket feet, 47ins wide x 24ins deep x 30ins high
Estimate: £80.00 - £120.00



Lot: 1552

A 19th Century French figured walnut bow and break-front side cabinet inlaid with amboyna bandings and boxwood stringings, with red veined marble slab to top, fitted three frieze drawers, cupboard under enclosed by a door inlaid with mother of pearl fan motifs and flanked by cupboards, 52ins wide x 20ins deep x 36ins high (slight fading, minor veneer damage and small chip to marble)
Estimate: £400.00 - £600.00



Lot: 1557

A mahogany kneehole dressing table of Georgian design, the top with moulded edge, fitted nine drawers and recessed cupboard, on bracket feet, 42ins wide x 21ins deep x 32ins high
Estimate: £200.00 - £300.00



Lot: 1553

A late George III mahogany bow and break-front sideboard with square top edge, fitted central frieze drawer above arched kneehole, flanked by cellaret drawer and cupboard, on six turned and reeded legs, 64ins wide x 25ins deep x 36.5ins high (with some damage and repairs)
Estimate: £450.00 - £600.00



Lot: 1558

A 19th Century Continental kingwood and amboyna commode of Louis XV design, the whole of serpentine and bombe outline with grey mottled marble slab to top with moulded edge, fitted three long drawers, the drawer fronts inlaid with panels of amboyna and also inlaid with kingwood crossbanding and stringing, the side panels inlaid with kingwood and wide banding, the drawer fronts with cast brass leaf and floral handles and scroll mounts to front supports, on square splayed front legs, 51ins wide x 23.75ins deep x 33ins high (surface re-French polished and with veneer missing and lifting in places and polish extensively marked) Provenance : The Princess Philippine De Merode, removed from Chateau La Briserie, near Mons, region of Hainault, Belgium, and thence by family descent
Estimate: £1,250.00 - £1,600.00



Lot: 1554

A late George III mahogany dwarf side cabinet, the figured top with square edge, fitted four frieze drawers above cupboards enclosed by four doors inset with later brass grilles and pleated cloth to back, interspersed by narrow split turned columns, on plinth base, 78ins wide x 20ins deep x 41ins high
Estimate: £800.00 - £1,000.00



Lot: 1559

A George III mahogany chest of drawers of small proportions, the top with moulded edge, fitted four long graduated drawers, on bracket feet, 31ins wide x 18ins deep x 31ins high
Estimate: £800.00 - £1,200.00



Lot: 1564

A George III mahogany bow-front chest of drawers with crossbanded top, fitted two short and two long drawers, on splayed bracket feet, 36ins wide x 19ins deep x 35ins high
Estimate: £150.00 - £200.00



Lot: 1560

A George III mahogany chest of drawers, the top with moulded edge, fitted brushing slide and four long graduated drawers under, on bracket feet, 36ins wide x 19ins deep x 36ins high (slight damage and patching throughout)
Estimate: £700.00 - £1,000.00



Lot: 1565

A mahogany chest of drawers of Georgian design, fitted four long graduated drawers, on bracket feet, 26ins wide x 16ins deep x 31ins high
Estimate: £150.00 - £200.00



Lot: 1561

A George III mahogany chest of drawers, the top with moulded edge, fitted brushing slide and four long graduated drawers under, on bracket feet, 32.5ins wide x 17.5ins deep x 32ins high (patched, faded and stained to top and with minor damage throughout)
Estimate: £350.00 - £500.00



Lot: 1566

A mid 20th Century mahogany serpentine fronted chest of drawers of Georgian design inlaid with boxwood stringings, fitted brushing slide and four long graduated drawers under, on shaped apron and splayed bracket feet, 30ins wide x 20ins deep x 30.5ins high
Estimate: £300.00 - £400.00



Lot: 1562

A George III mahogany chest of drawers, the square top edge inlaid with boxwood stringing, fitted two short and three long drawers, on bracket feet, 37ins wide x 19ins deep x 41ins high
Estimate: £200.00 - £300.00



Lot: 1567

An early 20th Century figured mahogany bow-front chest of drawers of Georgian design, the top with moulded edge, fitted four long graduated drawers, on bracket feet, 31ins wide x 21ins deep x 33ins high
Estimate: £80.00 - £120.00



Lot: 1563

A George III mahogany chest of drawers fitted with a brushing slide and four long graduated drawers, 35ins wide x 19ins deep x 35ins high (extensively damaged - handles possibly later)
Estimate: £120.00 - £160.00



Lot: 1568

A walnut serpentine fronted chest of drawers of Georgian design inlaid with satinwood crossbandings, the top with moulded edge, fitted four long drawers with gilt brass swan neck handles, on bracket feet, 46ins wide x 25ins deep x 47ins high (possibly adapted from a Georgian piece of furniture - extensively damaged)
Estimate: £200.00 - £300.00



Lot: 1569

A walnut chest on chest of 18th Century design, the drawer fronts inlaid with bandings, fitted seven drawers and slide, on bracket feet, 21ins wide x 18.5ins deep x 61ins high (faded and worn)
Estimate: £120.00 - £160.00



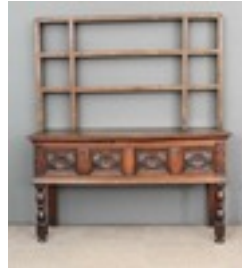
Lot: 1574

A late 18th Century oak dresser, the single plank top with moulded edge, fitted three frieze drawers with recessed panelled fronts above cupboard enclosed by a pair of panelled doors, on plinth base, 61ins wide x 13.5ins deep x 36ins high
Estimate: £800.00 - £1,000.00



Lot: 1570

An 18th Century oak chest on stand of plain design with lifting top, the stand fitted two drawers, on cabriole legs, 50ins wide x 24ins deep x 37ins high (splitting to top and other slight damage)
Estimate: £200.00 - £300.00



Lot: 1575

An old panelled oak dresser of "17th Century" design, the plain two plank top with moulded edge, fitted two frieze drawers with twin moulded drawer fronts, later carved with flowerheads and fan motifs, on baluster turned front legs, 60ins wide x 19.5ins deep x 33ins high, and with associated open rack for same
Estimate: £300.00 - £500.00



Lot: 1571

A Victorian mahogany chest of drawers with rounded front corners, fitted two short and three long drawers, 42ins wide x 23ins deep x 43ins high
Estimate: £150.00 - £200.00



Lot: 1576

A late 18th/early 19th Century stripped pine dresser, the upper part with angled cornice and fitted three shelves, the base fitted three frieze drawers above three central drawers and flanked by cupboards, each enclosed by a fielded panelled door, 59ins wide x 20ins deep x 79ins high (with adaptations)
Estimate: £450.00 - £600.00



Lot: 1572

A Victorian mahogany chest of drawers / washstand with tray top, fitted two short and two long drawers, on turned feet, 36ins wide x 20ins deep x 35ins high (cracked to tray top)
Estimate: £100.00 - £150.00



Lot: 1577

An 18th Century panelled oak bacon cupboard, the upper part with moulded cornice now fitted with shelves enclosed by two shaped fielded panelled doors, flanking fixed central panel, the base fitted three dummy drawers and three real drawers, on bracket feet, 72ins wide x 23ins deep x 78ins high (holes to side and general wear)
Estimate: £600.00 - £800.00



Lot: 1573

An Edwardian mahogany two tier corner cupboard of Sheraton design inlaid with boxwood stringings and satinwood bandings, the upper part fitted two shelves enclosed by astragal glazed door, the base enclosed by a single panelled door inlaid with urn motif, on bracket feet, 27ins wide x 16ins deep x 74ins high
Estimate: £120.00 - £160.00



Lot: 1578

A late 17th/early 18th Century panelled oak court cupboard, the overhanging top with moulded cornice, turned pendants, the upper part enclosed by a pair of arched fielded panelled doors, the base fitted two frieze drawers, cupboard under enclosed by a pair of panelled door, on stile feet, 39ins wide x

22ins deep x 73ins high
(replacement handles and lower
doors with replacement hinges)
Estimate: £600.00 - £800.00



Lot: 1579

A 19th Century pale green
painted two tier cupboard, the
upper part fitted two shelves
enclosed by a pair of "Thirteen
Pane" astragal glazed doors,
each door inset with red flashed
and cut-glass corner panel, the
base enclosed by a pair of
conforming astragal panelled
doors, 40ins wide x 15ins deep x
28ins high
Estimate: £150.00 - £200.00



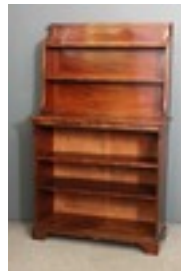
Lot: 1583

A 19th Century stripped pine
open and break-front bookcase,
the upper part with moulded
cornice, plain turned columns,
fitted six adjustable shelves, the
base with square moulded
pilasters to front enclosed by a
pair of lancet moulded and
panelled doors, 54ins wide x
16ins deep x 90ins high (cornice
possibly later)
Estimate: £400.00 - £600.00



Lot: 1580

A mahogany bow-front shop
display cabinet fitted three plate
glass shelves enclosed by a
single rear door, on cabriole legs,
25ins wide x 24ins deep x 72ins
high (slight wear throughout and
shelves chipped)
Estimate: £200.00 - £300.00



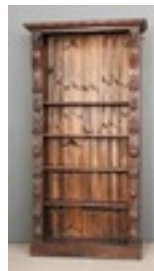
Lot: 1584

A late Georgian mahogany open
front bookcase, the upper part
with shaped sides fitted two
shelves with panelled backs, the
base fitted two adjustable
shelves, on bracket feet, 39ins
wide x 15ins deep x 64ins high
Estimate: £500.00 - £700.00



Lot: 1581

An early 20th Century oak five
tier sectional bookcase by
Thomas Turner with angled
cornice and glazed rising fronts,
34ins wide x 14ins deep x 80ins
high (ivorine plaque to base)
Estimate: £200.00 - £300.00



Lot: 1585

A stained oak bookcase of
Victorian design, carved to front
with Monarch pilasters and fruit,
fitted four open shelves, on plinth
base, 40ins wide x 14ins dp x
80ins high
Estimate: £80.00 - £120.00



Lot: 1582

A Victorian mahogany chiffonier
bookcase, the upper part with
moulded cornice, fitted three
shelves enclosed by a pair of
glazed doors, the base with
cushion fronted frieze drawer and
cupboards under enclosed by a
pair of arched panelled doors,
39ins wide x 16ins deep x 80ins
high
Estimate: £200.00 - £300.00



Lot: 1586

A Chinese panelled hardwood
and softwood two tier cupboard,
the top rail inlaid with mother of
pearl enclosed by two pairs of
shaped and moulded panelled
doors with ornate engraved brass
handles and escutcheons, 43ins
(1092mm) wide x 23ins (584mm)
deep x 70ins (1777mm) high
(with splits and damage to side
panels)
Estimate: £250.00 - £3,350.00



Lot: 1587

An early 19th Century Russian
figured mahogany cupboard of
"Empire" design with stepped
top, fitted single frieze drawer,
later spiral turned columns to
front, fitted two drawers enclosed
by a single panelled door, drawer
under, on shaped apron, 40ins
wide x 2ins deep x 68ins high
(columns later and with minor
veneer damage)
Estimate: £300.00 - £400.00



Lot: 1588

A George III mahogany tallboy later inlaid with satinwood bandings and with later carved and moulded cornice, the upper part fitted three short and three long drawers, the base fitted three long drawers, on bracket feet, 43ins wide x 22ins deep x 72ins high (with replacement handles - damages and repairs throughout)

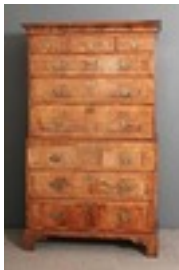
Estimate: £200.00 - £300.00



Lot: 1589

A mid 19th Century Continental figured mahogany bookcase of "Gothic" design, the upper part with moulded cornice, fitted four shelves enclosed by a pair of lancet astragal glazed doors, the base enclosed by a pair of panelled doors, on bracket feet, 47ins wide x 16ins deep x 84ins high

Estimate: £700.00 - £1,000.00



Lot: 1590

An 18th Century walnut and oak sided tallboy, the drawer fronts with matched veneer panels inlaid with herringbone bandings and crossbanded, the upper part with moulded cornice, fitted three short and three long drawers, the base fitted three long drawers, on bracket feet, 40ins wide x 21ins deep x 70ins high (with later handles and faded)

Estimate: £1,000.00 - £1,500.00



Lot: 1591

A George II walnut Secretaire a Abattant with moulded cornice and cushion moulded frieze drawer, the fall-front inlaid with shaped banding enclosing central cupboard and fifteen small drawers, the base fitted three drawers, on bun feet, 36ins wide x 18ins deep x 68.5ins high (poor condition, with damage and repairs)

Estimate: £1,500.00 - £2,000.00