



# U.S. Beef Cuts

for  
International  
Cuisine



## ACKNOWLEDGEMENTS

---

Project funded by checkoff dollars from:



**Colorado Corn**  
Administrative Committee  
127 22nd Street  
Greeley, CO 80631  
Tel: 970-351-8201  
[www.coloradocorn.com](http://www.coloradocorn.com)

---

In addition, we want to recognize the following contributors for their support.



**Nebraska Corn Board**  
301 Centennial Mall S., 4th Floor  
P.O. Box 95107  
Lincoln, NE 68509-5107  
Tel: 402-471-2676  
[www.nebraskacorn.org](http://www.nebraskacorn.org)



**University of Nebraska**  
Animal Science Department  
Lincoln, NE  
<http://animalscience.unl.edu/>



**Tyson Fresh Meats**  
800 Stevens Port Drive, Suite 813  
Dakota Dunes, SD 57049  
Tel: 605-235-2398  
[www.tyson.com](http://www.tyson.com)



Funded by the Beef Checkoff!

**National Cattlemen's Beef Association**  
A contractor to the beef checkoff program  
9110 E. Nichols Ave., Suite 300  
Centennial, CO 80112  
[www.beefinnovationsgroup.com](http://www.beefinnovationsgroup.com)

This book is merely a guide for identification of beef items. Individual packer specifications may vary. The U.S. Meat Export Federation (USMEF) assumes no liability for lack of adherence to the descriptions contained herein or for the availability of the products mentioned.



## U.S. Beef Cuts

for  
International  
Cuisine

---

### U.S. Meat Export Federation World Headquarters

1855 Blake Street, Suite 200  
Denver, CO 80202  
Telephone: 303-623-6328  
Fax: 303-623-0297  
[www.usmef.org](http://www.usmef.org)

No portion may be reproduced or photographed without the written permission of the U.S. Meat Export Federation.

Printed in USA-2014

## PRESIDENT'S MESSAGE



*Putting U.S. Meat  
On the World's Table  
Since 1976*

Beijing  
Brussels  
Denver  
Guangzhou  
Hong Kong  
Mexico City  
Monterrey  
Moscow  
Seoul  
Shanghai  
Singapore  
St. Petersburg  
Taipei  
Tokyo

**World Headquarters:**  
1855 Blake Street  
Suite 200  
Denver, CO 80202  
303-623-MEAT (6328)  
Fax 303-623-0297

Dear International Stakeholder:

It is a pleasure to present you with this new U.S. Beef Cuts for International Cuisine guidebook. This is a tool to help identify some of the common beef cuts that are available from U.S. processors and subsequent use in international markets. Actual specifications can be obtained from the processors. Additional details can be found in the USDA Institutional Meat Purchase Specifications (IMPS) and the North American Meat Processor (NAMP) Meat Buyers Guide.

This guidebook supports our efforts to increase the value and profitability for U.S. beef producers and our international customers.

I encourage you to contact your nearest USMEF representative if you have any questions or if we can assist you in any way. A listing of the USMEF office locations is included in this guide.

Sincerely,

Phillip M. Seng  
President & CEO

## U.S. MEAT EXPORT FEDERATION'S MISSION

*USMEF's mission is to increase the value and profitability of the U.S. beef, pork and lamb industries by enhancing demand for their products in targeted export markets through a dynamic partnership of all stakeholders.*

Established in 1976, the U.S. Meat Export Federation (USMEF) is the most vertically integrated trade association in the meat and livestock industry. USMEF represents livestock producers, meat packers, processors, purveyors and exporting companies; grain and oilseed organizations; agriculture organizations and agribusiness companies. USMEF is a dynamic partnership of key stakeholders working together to support an aggressive marketing presence for U.S. meat exports around the world.

Headquartered in Denver, USMEF has offices in Beijing, Brussels, Hong Kong, Mexico City, Monterrey, Moscow, Seoul, Shanghai, Singapore, St. Petersburg, Taipei and Tokyo. Special representatives also cover China, South America, the Middle East and the Caribbean. All in all, USMEF carries out trade activities in more than 80 nations.

USMEF receives funding and support from the USDA, exporting companies, farm bureaus, agribusiness and checkoff programs for beef, pork, corn and soybeans.

For more information please visit our web site at [www.usmef.org](http://www.usmef.org).

## CUTS FOR KOREAN BBQ AND YAKINIKU

Typically high marbled cuts prepared using high heat grilling



**SHORT RIBS, BONE IN**



**CHUCK SHORT RIBS, BONELESS**



**CHUCK FLAP**

## RAW PREPARATIONS AND COOKING METHODS



Recommended slicing 3 to 6 mm  
(.125" to .25")





## CUTS FOR HOT POT, RICE BOWL AND SHABU-SHABU

Typically less lean cuts prepared using boiling water



CHUCK EYE LOG



SHORT PLATE



PLATE (EXPORT), KARUBI PLATE

## RAW PREPARATIONS AND COOKING METHODS



Recommended  
slicing 1.5 to 3 mm  
(.0625" to .125 ")





## CUTS FOR CARNE ASADA, MILANESA AND SHAWARMA

Typically lean cuts prepared using high heat grilling or roasting



TOP ROUND (INSIDE)



OUTSIDE ROUND (FLAT)



EYE OF ROUND

## RAW PREPARATIONS AND COOKING METHODS



Recommended slicing 1.5 - 6 mm (.0625" to .25")





## CUTS FOR STEAK

Typically steak cuts prepared using high heat grilling



**CHUCK ROLL**



**TOP SIRLOIN CAP, FAT ON**



**TOP SIRLOIN BUTT, CENTER-CUT,  
BONELESS, CAP OFF**

## RAW PREPARATIONS AND COOKING METHODS



Recommended slicing  
13 to 19 mm  
(.50" to .75")



## MISCELLANEOUS CUTS FOR ASIA



RIB FINGERS



OUTSIDE ROUND, HEEL



Recommended slicing  
3 to 6 mm  
(.125" to .25")



HANGING TENDER



## RAW PREPARATIONS AND COOKING METHODS





## CUTS FOR THICKER SLICED, CUBED AND ROASTED DISHES

Ideal for fajita grilling and stir fry, roasts and stews/curries



CHUCK SHOULDER CLOD HEART

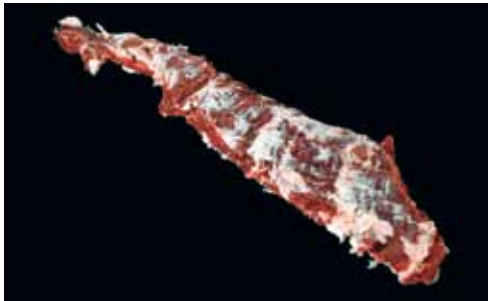


PLATE OUTSIDE SKIRT



BRISKET, POINT CUT, BONELESS

## RAW PREPARATIONS AND COOKING METHODS



Recommended slicing 6 to 13 mm (.25" to .50") or cubed 25 x 25 mm (1" x 1")



## MAP OF GLOBAL OFFICES AND DATE OF INCEPTION IN MARKET



With 18 offices strategically located across the globe, the U.S. Meat Export Federation is able to market and expand access for U.S. red meat exports, and provide technical expertise to international government organizations in over 80 countries. Through its worldwide network of offices, USMEF has forged a series of partnerships which have enabled U.S. companies and U.S. products to become integral parts of international red meat markets. An extensive international

presence enables USMEF to have a finger on the pulse of vital markets around the world. USMEF shares its local intelligence and more than three decades of experience with U.S. exporters, traders and buyers in addition to end users and processors in each market. As high-quality U.S. beef and pork have taken a lead position in international markets, exports play a more prominent role in industry growth and prosperity.

## GLOBAL OFFICES

---

### ASEAN / Singapore

Director: Sabrina Yin  
Tel: 011-65-6733-4255  
Fax: 011-65-6732-1977  
E-mail: [singapore@usmef.org](mailto:singapore@usmef.org)

### Caribbean

Representative: Elizabeth Wunderlich  
Tel: 830-997-6319  
Fax: 830-997-6093  
E-mail: [wunderlc@hctc.net](mailto:wunderlc@hctc.net)

### China / Beijing

Director: Jianwen Liu  
Tel: 011-86-10-8441-8455  
Fax: 011-86-10-8441-8457  
E-mail: [beijing@usmef.org](mailto:beijing@usmef.org)

### China / Shanghai

Representative: Ming Liang  
Tel: 011-86-21-6249-4640  
Fax: 011-86-21-6375-8041  
E-mail: [shanghai@usmef.org](mailto:shanghai@usmef.org)

### China / South China

Representative: Rachel Deng  
Tel: 013-282-505-5337  
E-mail: [canton@usmef.org](mailto:canton@usmef.org)

### China / Hong Kong

Director: Joel Haggard  
Tel: 011-852-2890-7408  
Fax: 011-852-2576-7345  
E-mail: [hongkong@usmef.org](mailto:hongkong@usmef.org)

### Europe / Brussels

Director: John Brook  
Tel: 011-32-2-514-1506  
Fax: 011-32-2-503-2984  
E-mail: [eu@usmef.org](mailto:eu@usmef.org)

### Japan / Tokyo

Director: Takemichi Yamashoji  
Tel: 011-813-3501-6328  
Fax: 011-813-6205-7330  
E-mail: [tokyo@usmef.org](mailto:tokyo@usmef.org)  
Website: [www.americanmeat.jp](http://www.americanmeat.jp)

### Korea / Seoul

Director: Jihae Yang  
Tel: 011-82-2-720-1894  
Fax: 011-82-2-720-1896  
E-mail: [korea@usmef.org](mailto:korea@usmef.org)  
Website: [www.usmef.co.kr](http://www.usmef.co.kr)

## GLOBAL OFFICES

---

### Mexico / Mexico City

Director: Chad Russell  
Tel: 011-52-55-5281-6100  
Fax: 011-52-55-5281-6013  
E-mail: [mexico@usmef.org](mailto:mexico@usmef.org)  
Website: [www.usmef.org.mx](http://www.usmef.org.mx)

### Mexico / Monterrey

Director: Gerardo Rodriguez  
Tel: 011-52-81-8989-2323  
Fax: 011-52-81-8989-2300  
E-mail: [monterrey@usmef.org](mailto:monterrey@usmef.org)  
Website: [www.usmef.org.mx](http://www.usmef.org.mx)

### Middle East / Cairo

Representative: Amr Abd El Gliel  
Tel: 011-20-2-22 90 70 75  
Fax: 011-20-2-24 14 03 84  
E-mail:  
[a.abdelgliel@agrmarketingint.com](mailto:a.abdelgliel@agrmarketingint.com)  
E-mail:  
[linakanaan@agrmarketingint.com](mailto:linakanaan@agrmarketingint.com)

### Middle East / Lebanon

Representative: Simon Bakht  
Tel: 011-961-1-740378  
Fax: 011-961-1-740393  
E-mail: [amfime@cyberia.net.lb](mailto:amfime@cyberia.net.lb)

### Russia / Moscow

Representative: Galina Kochubeeva  
Tel: 011-7-495-544-9387  
Fax: 011-7-495-735-4849  
E-mail: [moscow@usmef.org](mailto:moscow@usmef.org)

### Russia / St. Petersburg

Representative: Yuri Barutkin  
Tel: 011-7-812-309-1101  
E-mail: [stpete@usmef.org](mailto:stpete@usmef.org)

### South America / Lima

Representative: Jessica Julca  
Tel: 011-51-9877-37692  
E-mail: [jjulca@usmef.org](mailto:jjulca@usmef.org)

### Taiwan / Taipei

Director: Davis Wu  
Tel: 011-886-2-2736-1200  
Fax: 011-886-2-2736-1500  
E-mail: [taiwan@usmef.org](mailto:taiwan@usmef.org)  
Website: [www.usmef.org.tw](http://www.usmef.org.tw)





# **U.S. Beef Cuts**

**for  
International  
Cuisine**

---

## **U.S. Meat Export Federation**

### **World Headquarters**

1855 Blake Street, Suite 200

Denver, CO 80202

Telephone: 303-623-6328

Fax: 303-623-0297

[www.usmef.org](http://www.usmef.org)