

# UlifeCam (U5820Y, GD2810, U5880/1Y) Installation Guide

Packing list.....	1
Preparation before the installation.....	1
Step 1 The connection and setting of UlifeCam with home wireless router .....	3
Step 2 Register a U-life account and Login.....	3
Step 3 Search IP camera UlifeCam .....	4
Step4 Camera Network Parameters Settings and Bind to U-life Account.....	5
Step5 View Camera Video.....	7



U5820Y/GD2810 (UlifeCam1)



U5880/1Y (UlifeCam2)

## Packing list

UlifeCam(U5820Y, GD2810, U5880/1Y), 5v power adapter, LAN wire (Picture)

## Preparation before the installation

Note:

1. Users using this product must have access to internet. Otherwise, you can not use this product through Internet, and only can view the cameras in LAN by clicking the button "Local".
2. Before using this product, you must register a U-life account first.
3. Before registering an account, you must ensure that the PC or mobile can access to internet, otherwise you can not register successfully.
4. Users can download U-life PC and Android applications from <http://www.ulifecam.com/> .
5. For iPhone /iPad users, please search "u-life" keyword on Apple APP Store.

## Getting The APPs



App Store



www.ulifecam.com

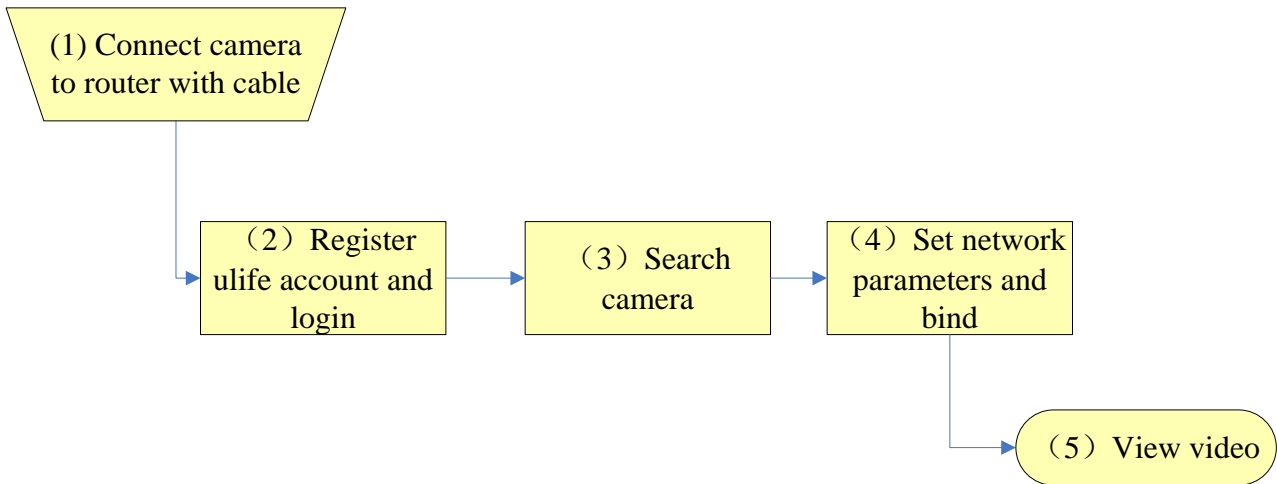
Download



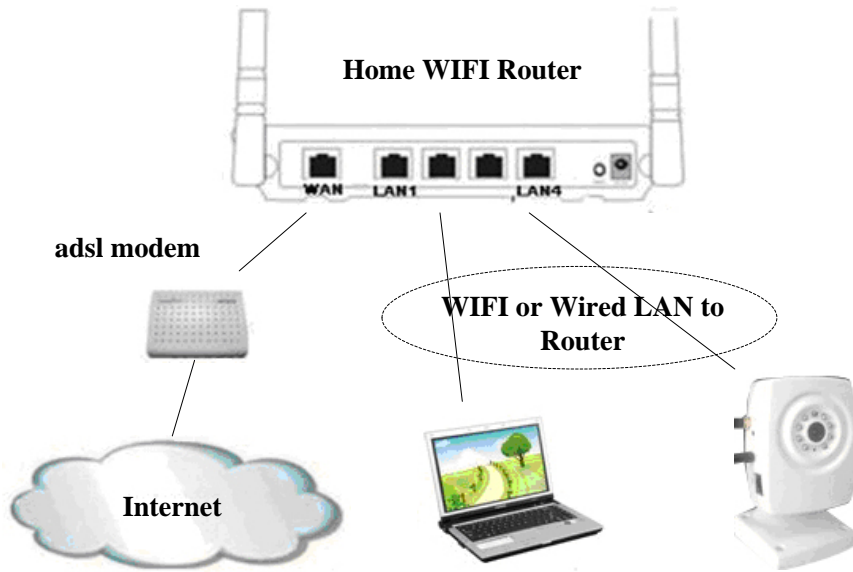
Ulife APPs



## Installation Processes



## Step 1 The connection and setting of UlifeCam with home wireless router



Connection figure

1. Connecting UlifeCam and adapter, ensure that its power supply is normal.
2. Connect devices in accordance with above 'connection figure' (The UlifeCam must connect with the router by network cable when first setting up process; PC is connected to router with WiFi or cable). As an example, below described is how to do setting of UlifeCam with U-life application on PC.

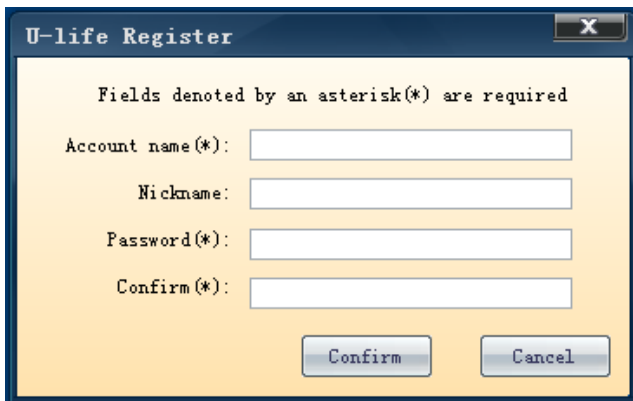
## Step 2 Register a U-life account and Login

Before using this product, you need to download and install the U-life application (The applications for PC, iPhone and Android are similar). After the installation of U-life application on PC, double-click 'U-life.exe' icon to run the software, register according to steps as shown in below picture:

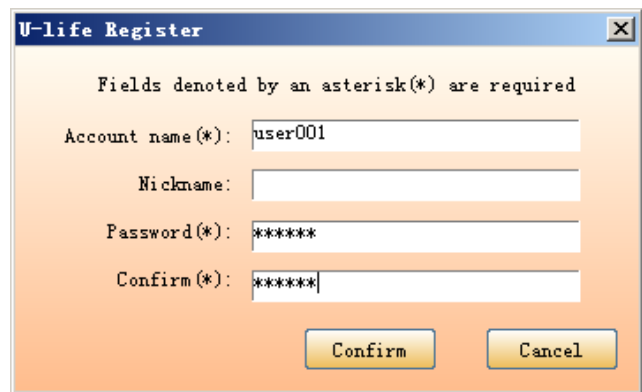


1). Double-click to run.

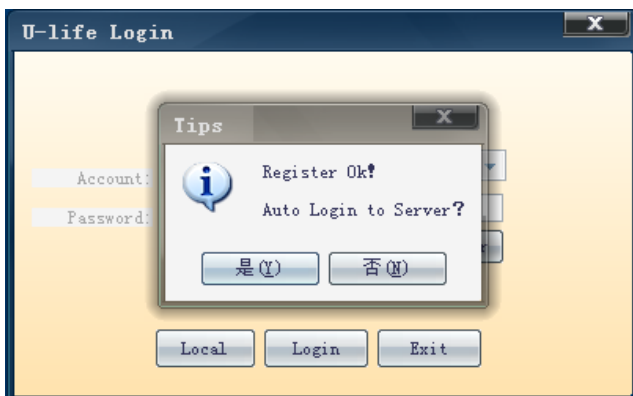
2). Click 'Register'



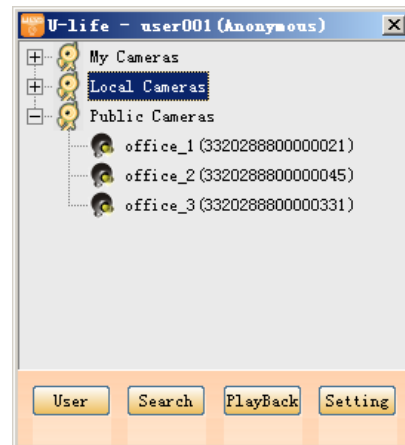
3). Fill in the registration information.



4). Click 'Confirm'.



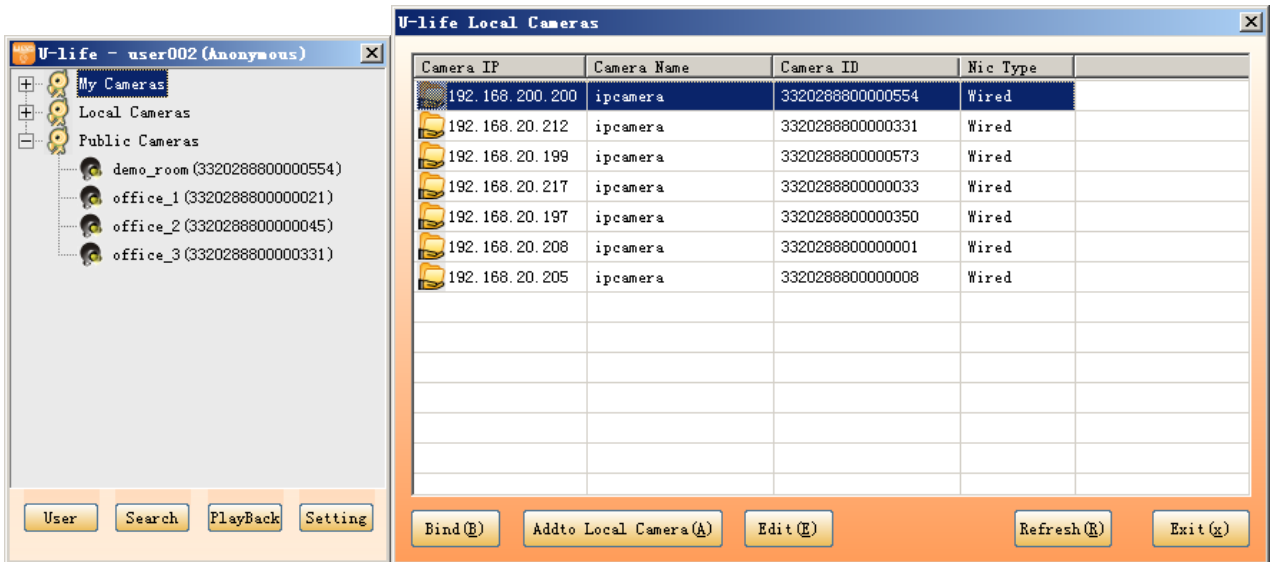
5). After successful registration, Click 'Y' to log in.



6). Login. After registering successfully, you can use " U-life" platform with registered account, and configure the camera.

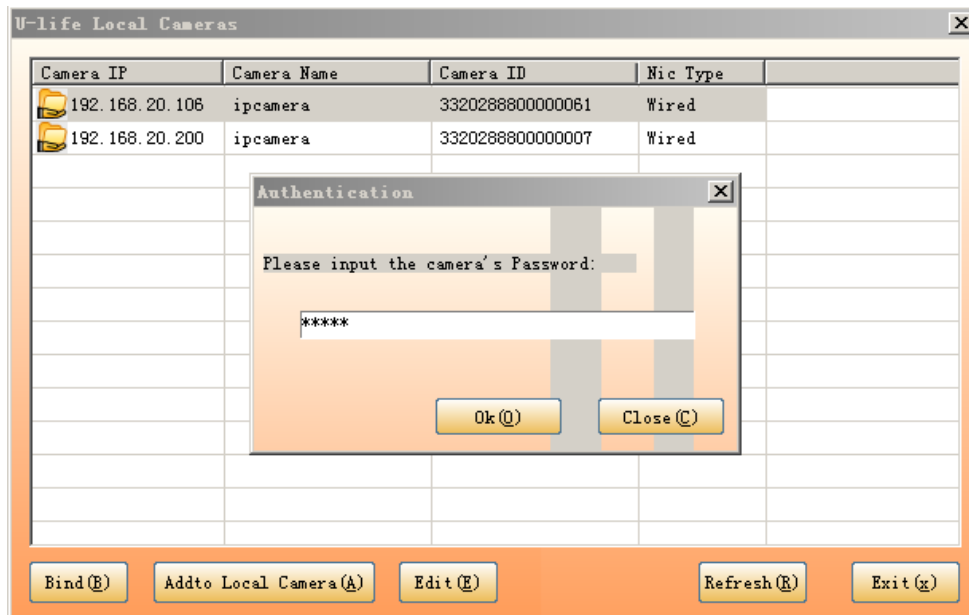
### Step 3 Search IP camera UlifeCam

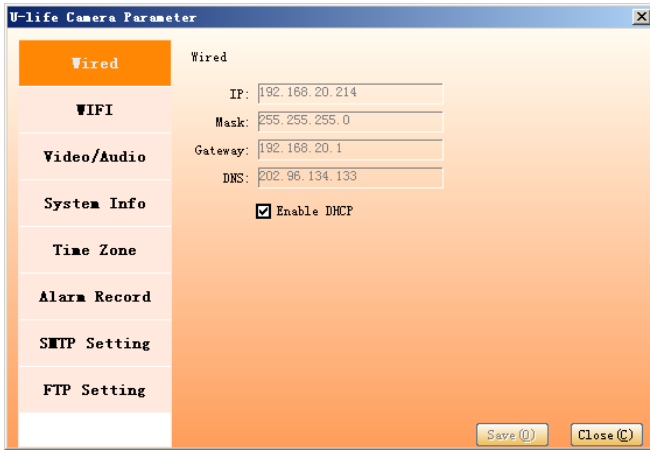
Login the "U-life" platform, click 'search', the camera will be listed as below picture. If no camera found, you can try to click" Refresh", **if still can't be found, press the reset button of the camera for more than 6 seconds, the camera will reset to factory default, then you can search again.**



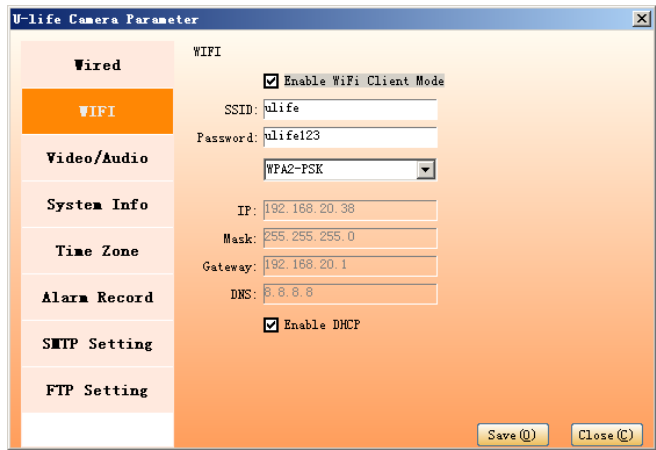
## Step4 Camera Network Parameters Settings and Bind to U-life Account

Select the camera in the search list, click "Edit Device Parameters", you will be required to input default password which is **"admin"**.





Wired Setting Parameter



WiFi Setting Parameter

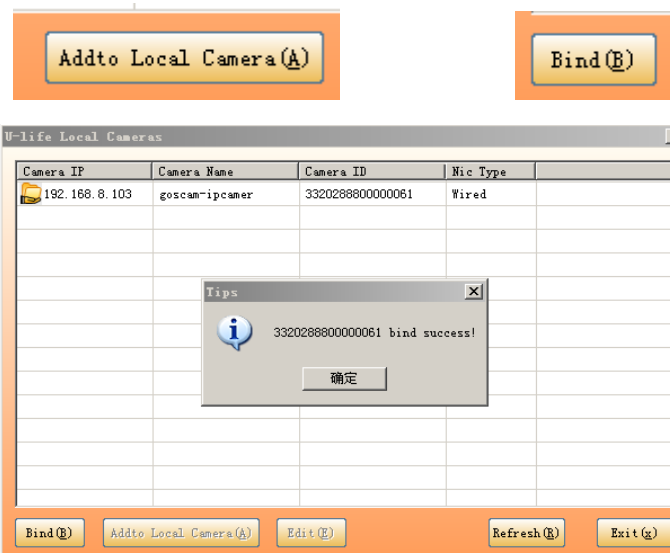
**Two modes can be selected, wired connection or WIFI connection in the device settings.**

1. If the user selected a wired connection, in wired Settings, choose to enable the DHCP, the device IP will be automatically distributed.
2. If the user selected WIFI connection, In 'WIFI' settings, select 'enable WIFI', input the SSID of the wireless router, the WiFi password, enable the DHCP, and click "ok" the camera can be adaptive with WIFI connection. **(UlifeCam can support common WiFi router with WEP, WPA and None encryption mode, but some router without standard WPA encryption methods, user had to change the router's encryption mode to WEP.)**

**Note: When WiFi and Wired LAN is both set the Internet connection will be through WiFi.**

3. After completing Wired or WIFI setting, in the main settings page list, we can see the IP address of the device, user can choose "add to the local list" and "bind", the device will be added to U-life of the local device list, if select the "Bind", the device can be bound with the U-life account that you registered.

**Note: The 'bind' function can work only after the IP setting is correct and the registration is done on Ulife platform. The registration may take a few seconds to several minutes, depending on the network status. (See FAQ question 9)**



Note: The user can also right click 'My Cameras' to bind the camera.

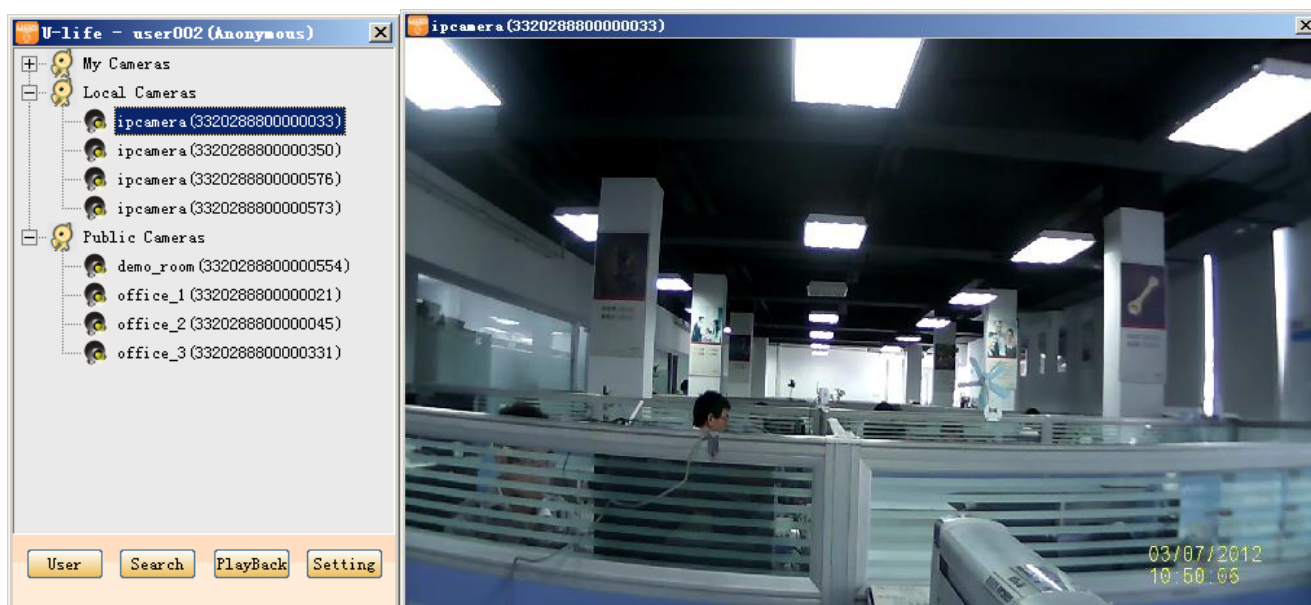
4. When the above process successfully completed, you can click on the device in different list to view video.

## Step5 View Camera Video

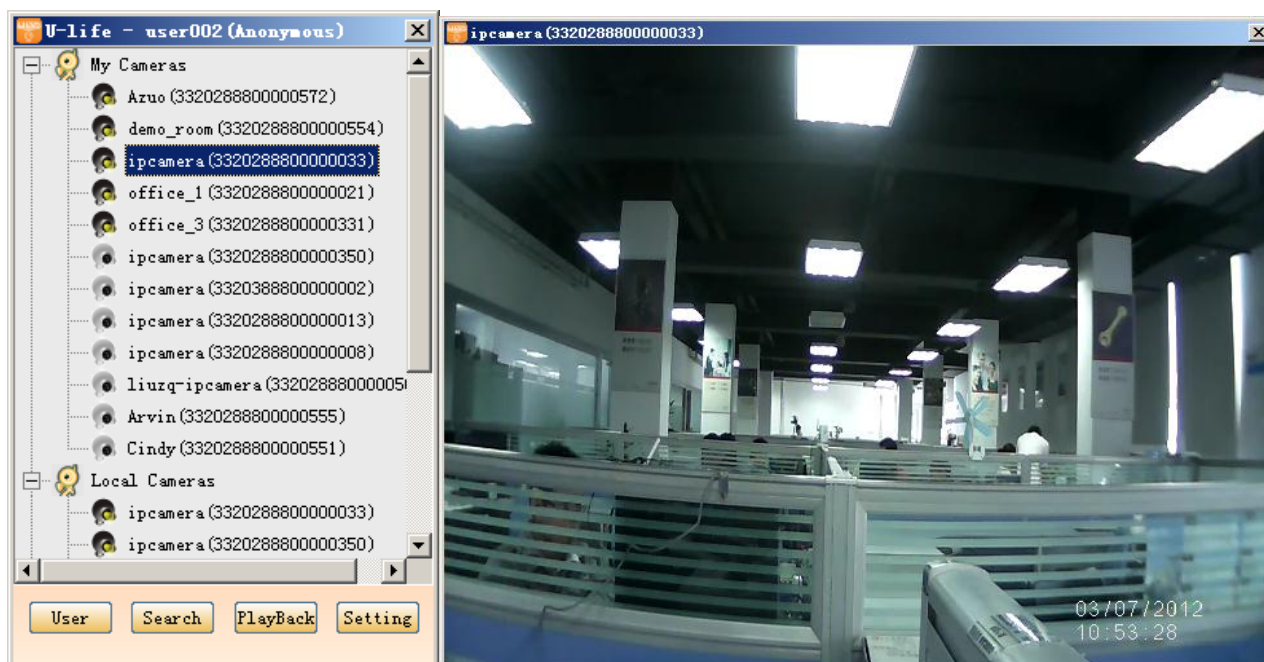
**Note:** Video from cameras in the 'Local Cameras' list is HD, if viewed on PC.

If the setting is successful, you can login and view the camera on any PC or mobile devices (iPhone , Android) with U-life application.

1. Local view: double-click the camera in the 'Local Cameras' list, you can view the video and click the video window, the control panel will pop up, you can take photo or record the video to PC. The local view supports HD quality video.



2. Click on camera of "My Cameras" list to view the video through the internet network, with VGA resolution.



The installation and operation of U-life application on iPhone or Android is similar with steps to do on PC, as long as you have a registered account, you can view the camera on PC or phone at the same time.

For advance functions please refer the UlifeCam user manual.