



KONICA MINOLTA



ultimate production design: ultimate multifunction performance.

COUNT  KONICA MINOLTA  
KIP 7100

#### KIP 7100 Precision Design

- » Premier Performance and Quality
- » Smart Eco2 Design
- » Color Touch Controls
- » 600 x 600 dpi Print, Copy and Scan
- » High Definition Print Technology
- » 100% Toner Efficient- Zero Waste
- » Energy Star Qualified System
- » Recycled Paper Approved
- » Components 97% Recyclable

#### KIP 7100 Print Management Software

- » Web Based View and Print
- » PC Based View and Print
- » PDF and DWF View, Print and Scan
- » Color Workflow Integration
- » Onscreen Image Preview
- » Multi Page File Support
- » Windows 7 Certified Driver
- » AutoCAD 2011 Driver
- » Cost Reporting for all Functions

## KIP 7100: production expandability.

THE PRODUCTIVITY OF THE KIP 7100 SYSTEM IS DESIGNED TO SATISFY THE MOST DEMANDING NEEDS OF DECENTRALIZED USERS. THE VERSATILE KIP 7100 MAY ALSO BE EXPANDED TO PROVIDE WORKGROUPS WITH MULTIFUNCTION CONVENIENCE. KIP 7100 SYSTEM SOFTWARE IS IDEAL FOR DECENTRALIZED ENVIRONMENTS AND EXPANDABLE TO MEET THE NEED FOR CENTRALIZED PRINTING. THE KIP 7100 PROVIDES OPERATORS WITH THE FLEXIBILITY TO DIRECT PRINTS AND COPIES TO A PREFERRED OUTPUT DESTINATION — THE INTEGRATED TOP STACKING SYSTEM AND/OR TO AN OPTIONAL REAR KIP STACKING SYSTEM FOR INCREASED PRODUCTION. KIP 7100 SYSTEMS DELIVER THE BEST OF BOTH WORLDS: WALK-UP CONVENIENCE AND PRODUCTION PRINTING!

#### KIP 7100 Operational Convenience

- » Walk-Up Operational Convenience
- » Print, Copy and Scan Touch Controls
- » View & Print Sets from Touch Screen
- » Print From / Scan to Integrated USB Port
- » Color Scan to File and Color Copy to Inkjet
- » Auto Media Loading with Roll End Caps
- » Integrated Top Stacking System
- » Direct Prints to Optional Rear Stackers
- » On Screen System and Operator Guides



### Smart Eco<sup>2</sup> Design - Economical & Ecological

The Energy Star<sup>®</sup> qualified KIP 7100 employs adjustable sleep modes to keep power consumption to a minimum while providing fast print times to keep busy workgroups moving. High yielding, 100% efficient high definition toner delivers on the promise of maximum system uptime. In addition, the KIP 7100 features a reduced maintenance cycle to minimize maintenance times.

The KIP 7100 is part of KIP's initiative to ease environmental burdens in all stages of a product's life-cycle.



KIP 7100 Integrated USB Port

### Ultimate Document Mobility

An integrated USB port provides convenient access to files stored on USB drives for instant viewing and printing of single documents or full collated sets. In addition, originals may be directly scanned to a USB drive in a variety of file types, including multipage PDF, TIF and DWF formats.

- » Conveniently integrated with KIP 7100 touchscreen
- » Print from and scan to integrated USB port
- » Streamlines mark-up document workflow
- » Color scan to file and color copy to inkjet



Print and original stacking system for departmental workgroups.



Single footprint integrated top stacking for decentralized environments.



High productivity stacking for centralized print environments.



Maximum productivity folding for seamless workflow integration.

## KIP 7100: precision imaging.

THE KIP 7100 DELIVERS FAST AND ACCURATE COPIES AND PRINTS USING TONER BASED IMAGING TECHNOLOGY THAT PRODUCES UV STABLE PRINTS. 100% TONER EFFICIENT KIP HIGH DEFINITION PRINT TECHNOLOGY ENSURES RICH BLACKS AND SMOOTH GRADIENTS. SUPERIOR 600 x 600 DPI PRINT, COPY AND SCAN RESOLUTION CAPTURES FINE DETAILS WITH REMARKABLE TONE CLARITY, KEEPING REPRODUCTIONS TRUE TO THE ORIGINAL.

### KIP 7100 Flexible Print Management

KIP 7100 systems include powerful print management applications that can be accessed from an unlimited number of seats. KIP PrintNET is a full featured web based viewing, printing and print management application that utilizes standard browsers to print to the KIP 7100 via a corporate intranet or over the internet. Additionally, KIP Request is a PC based printing application provided to submit jobs to FTP sites and print via networks with the same powerful feature set.

### PC and Web Based Viewing

- » Ultra fast processing
- » Accurate imaging (WYSIWYP)
- » Custom image placement
- » Full image preflight
- » Title block rotation

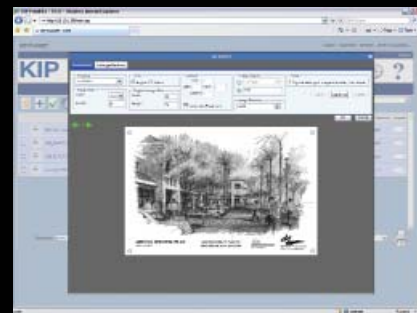
### PC and Web Based Printing

- » Print full job sets from anywhere
- » Unlimited number of files
- » Text and image stamping
- » Browser independent
- » Print multi-page files
- » Batch file conversion

### Certified Application Drivers

KIP application drivers support 32 and 64 bit printing features including set collation, fast spooling for multiple copies or sets, data tracking for job accounting and media selection.

- » Microsoft Windows 7 Certified 32 and 64 bit print drivers
- » Drivers for AutoCAD versions up to 2011
- » Citrix ready



Web Based Viewing & Printing



Icon Based Operation



## KIP 7100 Touchscreen Printing

The KIP 7100 provides the power of touch controls to view, scale, organize and print file sets from USB drives, network locations or mapped CD/DVD drives. Total operator efficiency is achieved through use of the central touchscreen, the intuitive interface that displays all system control settings on one screen to enhance productivity.

### View and Print Touch Controls

- » From integrated USB port
- » From network locations
- » From mailboxes
- » View images prior to printing
- » Set number of prints
- » Easily resize images
- » Simple collation options

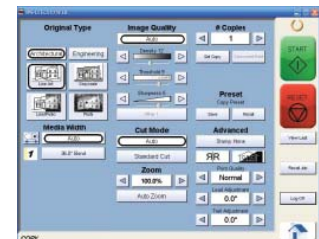
### Copy and Scan Touch Controls

- » Collated sets copying
- » Recall, edit and reprint previous jobs
- » Set copy and concurrent print
- » Convenient quality presets
- » Apply digital stamps
- » Scan directly to multi-page PDF, TIF, or DWF
- » Scan to USB removable media drives

Powerful KIP Color Advanced software provides versatile color scan, copy and print applications designed to meet the demands of advanced operators from the KIP 7100 Touchscreen. KIP Color Advanced features powerful color copying and printing to wide format inkjets. Features such as collated set printing and color management provide advanced control over print resources.



Create Print Sets from the Central Touchscreen



The ultimate in copy, scan and print technology is right at your fingertips.

### KIP Color Advanced Printing:

- » Integrates with single or multiple printers
- » Color RIP system for graphic and technical files
- » Advanced color controls and copy count

### KIP Color Advanced Scanning:

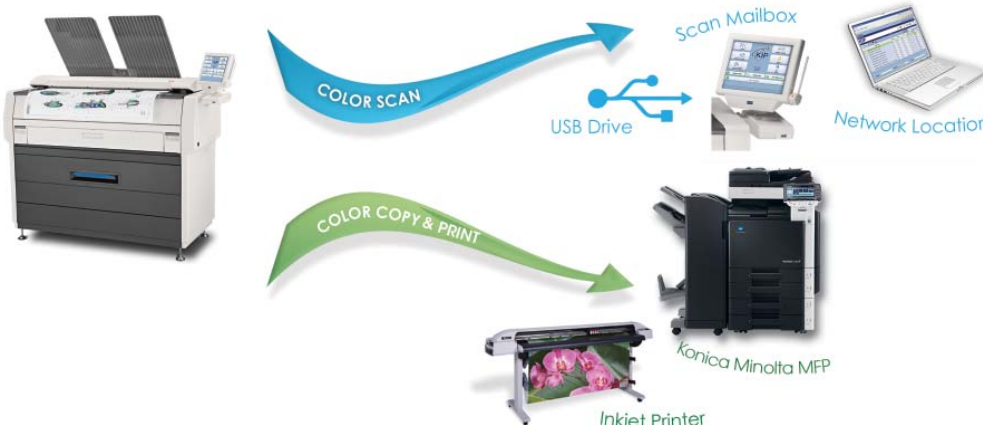
- » Supports a full range of color file formats
- » Advanced image enhancement options
- » Scan to Email, USB drives, mailboxes, or network

### KIP Color Advanced Copying:

- » Range of quality presets for different types of originals
- » Copy to one or several printers via network connection
- » Professional output options, include nesting, paneling, collated sets printing and cropping

### Konica Minolta Direct Print for KIP:

- » Support for multiple Konica Minolta MFPs
- » Save time and money printing half size sets to Konica Minolta MFPs
- » Supports color and monochrome
- » View, print and copy documents



## maximize the power of the web: manage your system.

KIP 7100 SYSTEMS ELIMINATE ALL BARRIERS TO EFFICIENT WEB-BASED SYSTEM MANAGEMENT. THE KIP 7100 INTEGRATED PRINTNET WEB SERVER ALLOWS USERS AND ADMINISTRATORS TO EFFECTIVELY COMMUNICATE FROM REMOTE LOCATIONS WITH AN INTUITIVE NEW ICON BASED INTERFACE..



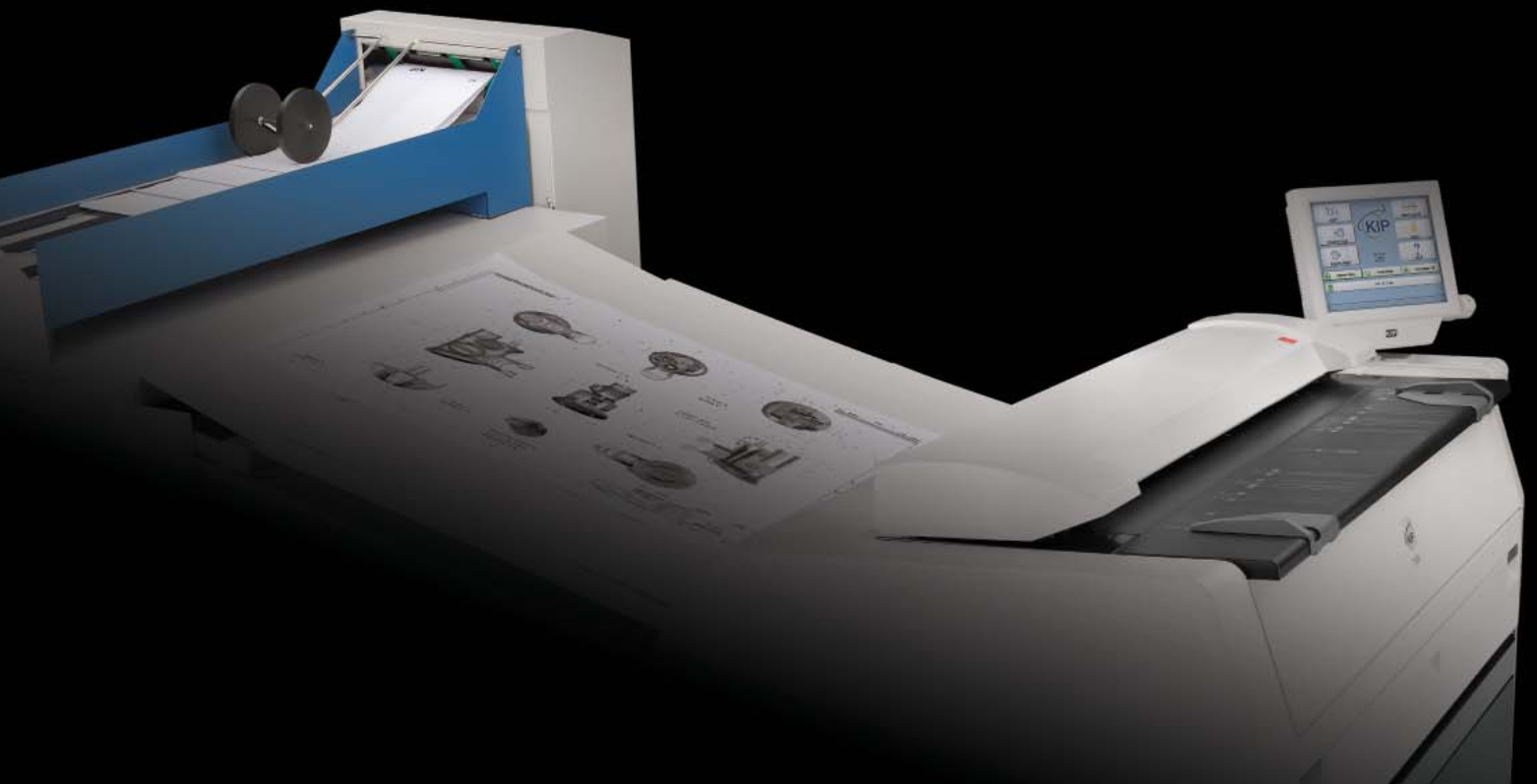
### Complete Communications Hub

KIP 7100 systems provide advanced features with simple operation for unequaled wide format performance. KIP 7100 systems are powered by KIP total print management software for superior productivity and the tightest possible integration with existing network infrastructures.

The ability to communicate with inkjet printers and remote workstations increases performance and the power to execute simultaneous copying, printing, and scanning tasks supports multiple users in busy workgroup environments.

- » Meets strict security guidelines
- » Integrated web server
- » On-screen system and operator guides
- » Print management applications

KIP 7100 system operation is simplified with direct access by the operator to the touchscreen system and operator guides. Remote access to the guides is achieved via KIP PrintNET web solutions.





### Kip 7100 E-Systems Reports

KIP 7100 reports detailing total system usage are delivered via email on demand or at designated intervals to system administrators. Recipients may have the email sent to a choice of PC, laptop, or smart phone!

- » Generate highly accurate reports on demand
- » Create reports based on time or date range
- » Create reports based on projects and users
- » Manage inter-departmental expenses
- » Reports provided in Microsoft Excel format

### KIP 7100 Versatile System Configurations

The KIP 7100 multifunction system is available in a variety of configurations, providing the versatility to select an initial system with features to suit immediate requirements.

### KIP 7100 Feature Access Keycodes

KIP 7100 additional features can be easily implemented via keycode entry at the touchscreen as required.

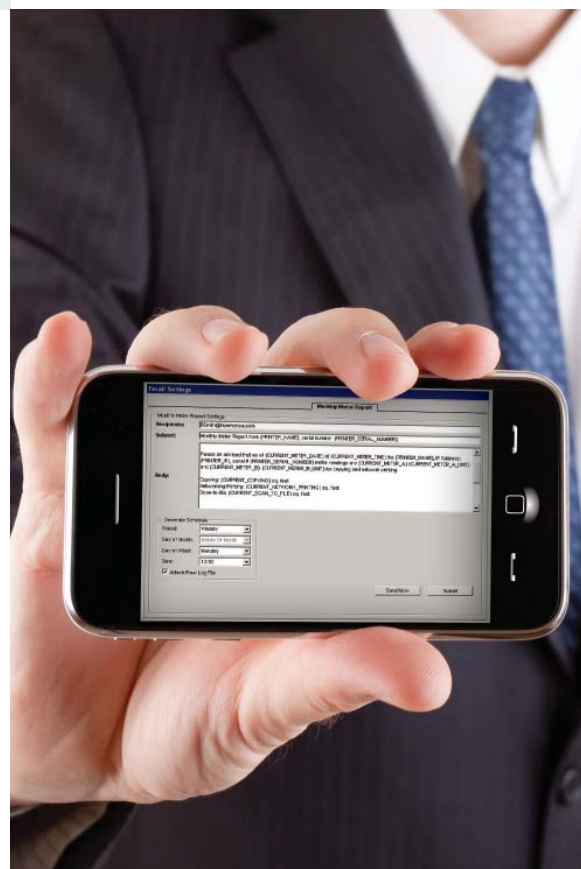
### KIP 7100 Administration Control

KIP 7100 systems provide the ability to check the status of the system, track the progress of jobs in queues, monitor paper and toner levels, access user mailboxes and build print jobs.

Administrators can implement system controls access to ensure that the only designated personnel can access the KIP 7100.

### KIP 7100 Cost Reporting

The KIP 7100 automatically logs and reports on a comprehensive range of accounting data related to each system function. Dependent on administrative preferences, detailed reports may be generated to include times, dates, user names, job names, media used and related costs.



## KIP Premier Performance and Build Quality

As a world leader in wide format document production technology, KIP is committed to providing the highest value standards by combining the best in hardware and software technology to create superior products at affordable prices. KIP systems are quality engineered for production class operation and reliability. State-of-the-art printing technologies and advanced self-diagnostic systems maintain system productivity to ensure maximum uptime.

We differentiate our products by integrating environmental benefits, such as energy efficiency, emissions reduction and the ability to recycle supply containers, to deliver an improved operational experience.

## COUNT ON KONICA MINOLTA

Konica Minolta Business Solutions U.S.A., Inc., is a fast-growing leader in advanced digital imaging systems. Print professionals count on Konica Minolta for bizhub PRO equipment that fulfills increasing demands for high-speed, low-cost and B&W production. Konica Minolta also provides leadership technology in workflow management, print floor automation, advanced security and flexible networking to support a broad range of applications in corporate central reprographics, data centers, commercial and government printing and print-for-pay services.

With over 37,000 worldwide employees, cutting-edge research programs in optical and digital technology, a deep commitment to environmental protection, and the industry's most complete line of document imaging equipment from desktop to print shop, Konica Minolta was recognized by Brand Keys for the third consecutive year as the #1 Brand for Customer Loyalty in the MFP Office Copier Market. As long as you count on Konica Minolta, you've made the right decision.



For more information, please visit: [www.CountOnKonicaMinolta.com](http://www.CountOnKonicaMinolta.com)



© 2010 KONICA MINOLTA BUSINESS SOLUTIONS U.S.A., INC.  
All rights reserved. Reproduction in whole or in part without written permission is prohibited. Konica Minolta and Count on Konica Minolta are trademarks of KONICA MINOLTA HOLDINGS, INC. All other brands and product names are registered trademarks or trademarks of their respective owners. Design and specifications are subject to change without notice. Some functions may require options, which may or may not be available at time of launch.



KONICA MINOLTA

KONICA MINOLTA  
BUSINESS SOLUTIONS U.S.A., INC.

100 Williams Drive  
Ramsey, NJ 07446

[www.CountOnKonicaMinolta.com](http://www.CountOnKonicaMinolta.com)  
[www.kmbs.konicaminolta.us](http://www.kmbs.konicaminolta.us)

### Environmental Responsibility



### KIP 7100 Certifications

