

ULTRASPORT 2000 MOTORHOME

Feel the power. Savor the luxury. Adore the price.



Damon
Value by Design

*A NEW CENTURY.
A NEW MILLENNIUM.
AND A NEW STANDARD
FOR VALUE IN GENUINE
DIESEL MOTORHOMES:*

ULTRASPORT 2000

Damon ingenuity has done it again. In Ultrasport 2000, you get a diesel-powered RV for the price of a diesel upgrade. Rest assured, though, this is no upgrade. Ultrasport was designed as a diesel from the ground up, with none of the compromises necessary to turn a gas-powered motorhome into a diesel. Check out its style, its luxury, its power. No doubt about it: Ultrasport 2000 is a diesel to be reckoned with. Which makes its price all the more appealing.

- New for 2000: a custom-designed front entrance door for increased accessibility to the coach
- A powerful 24-valve Cummins 275-hp diesel engine
- An Allison 6-speed transmission
- Full air brakes with antilock technology
- A Jacobs exhaust brake
- Air-ride suspension
- Hadley air horns
- Exceptionally roomy, open floor plans that let you stretch out and relax
- Plush, comfortable living room seating, including a reclining barrel chair with a footrest
- A space-adding Super Slideout in Model 3670 — it features a hide-a-bed couch and freestanding dinette which can be rearranged a number of ways to suit your lifestyle, ample overhead storage, and decor-enhancing mirrored fascia with oak trim
- A choice of four tasteful, upscale decor packages — BlackTie, Cotillion, Windsor or Cotswold



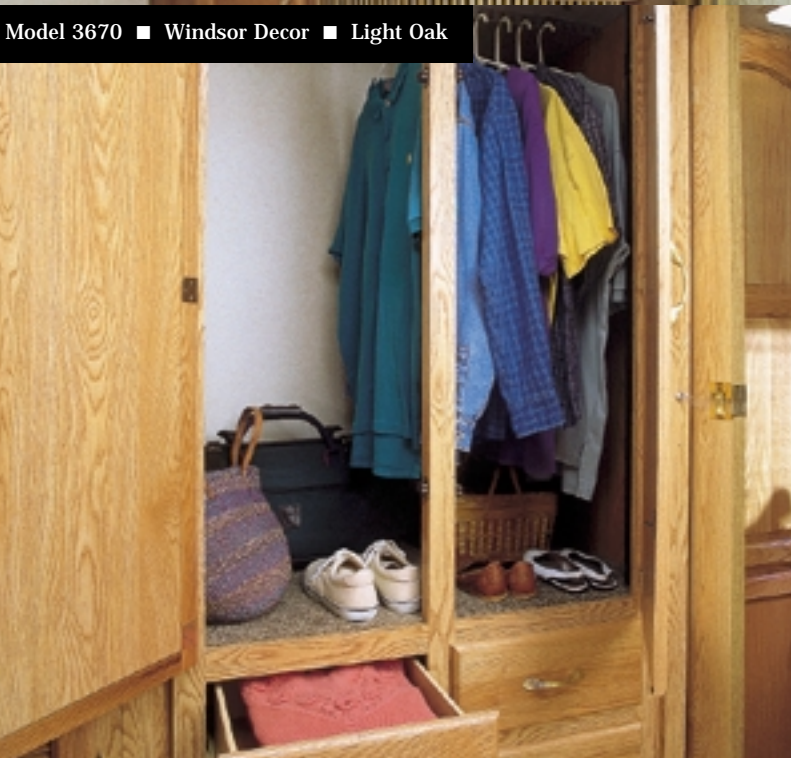
Damon
Value by Design



Model 3670 ■ BlackTie Decor ■ Pearwood



Model 3670 ■ Windsor Decor ■ Light Oak



- A unique StepSaver™ kitchen — thoughtfully laid out to make meal preparation quick and easy. Among its many standards are a big, oak-front, double-door refrigerator; a three-burner range and oven; a carousel-style microwave; double metal drawer guides; a European-styled, double-bowl sink that resists stains, scratches, dents and two solid-surface sink covers that increase your countertop space; and a solid-surface, decor-coordinated countertop that's as easy to clean as it is on the eyes.



ULTRASPORT 2000

- Fabric-lined overhead cabinets — to reduce interior noise during travel
- A Sony AM/FM/cassette player with a 10-disc CD changer
- Solid-wood cabinet ends for long-lasting beauty
- Cathedral-cut, raised-panel wood cabinet doors
- Stunning solid-wood plank flooring in the kitchen area
- Abundant storage space — why leave anything behind? Ultrasport lets you bring it all, especially with its massive pass-through basement storage compartment

Damon
Value by Design



ULTRASPORT 2000

- A bedroom featuring rich wood cabinetry and trim; decorator lighting; a queen-size bed with a diamond-beveled headboard mirror; a plush pillowtop mattress; a decor-coordinated designer bedspread with pillow shams and throw pillows; and a spacious carpet-lined wardrobe with a mirrored front and interior lights
- An optional Web TV® Internet unit by Phillips Magnavox that lets you “surf the net with your TV set” (Web TV Plus service also lets you send and receive e-mail and get stock quotes, news stories, local weather, sports scores and more right on your TV. Other features include seven days of onscreen interactive TV listings, One-Touch VCR programming that easily lets you record your favorite programs and WebPIP®, which lets you watch television and surf the Internet at the same time.)
- A fully appointed bathroom complete with beautiful cabinetry; a wood-framed, mirrored medicine cabinet; an attractive wallpaper border; a solid-surface, decor-coordinated countertop; a porcelain toilet with a sprayer; a power ceiling vent; and a full-height fiberglass shower with a door and a built-in skylight for greater brightness and a more open, airy feeling
- Brass-style pulls on every door and drawer
- Elegant window treatments — including smart, contemporary, fabric-covered lambrequins and decorator valances
- Standard day/night shades throughout for extra privacy
- A lined windshield drape for extra privacy and sound dampening
- Ultra leather captain's chairs, including a six-way power driver's seat
- An electric rear-view monitor system that helps you back up safely and easily

Damon
Value by Design





THE VALUE IS BUILT IN

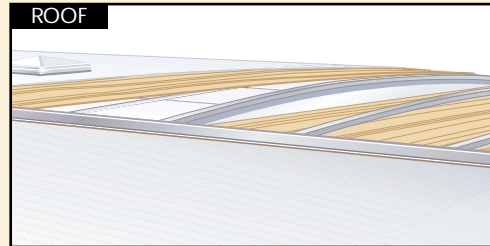
ULTRASPORT 2000

Ultrasport 2000s are the product of advanced engineering, computer-aided design and innovative manufacturing technologies. You can see the difference that makes. No other motorhomes in their class offer so impressive a combination of beauty, brawn and benefits.

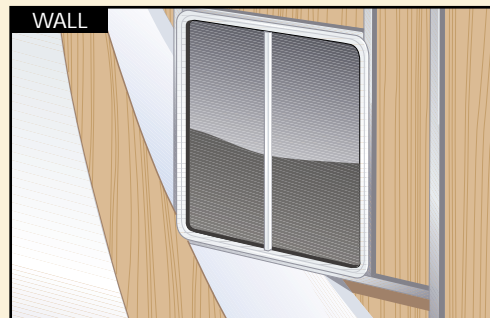
- 1 - Ducted dual 13,500-BTU roof air conditioners, standard, to distribute cool air efficiently
- 2 - Hadley air horns
- 3 - A sleek, aerodynamic, fully integrated fiberglass front cap
- 4 - A large tinted front windshield that reduces glare and solar heat
- 5 - Pantographic, dual-arm windshield wipers that ensure top visibility in adverse weather
- 6 - Large, bus-style front mirrors
- 7 - Wraparound headlights
- 8 - Standard fog lights for increased touring safety
- 9 - A Custom Excel® front door
- 10 - Attractive, white, anodized-aluminum radius window frames with large sliding-glass windows that are tinted to keep out solar heat
- 11 - Standard ceiling vents that provide ventilation throughout the coach
- 12 - A fully integrated, aerodynamic rear fiberglass cap
- 13 - An easy-access, vented engine door
- 14 - Recessed tail lights and a high-mounted center brake light
- 15 - A fully enclosed and heated 90-gallon freshwater tank — great for extended travel with fewer stops
- 16 - Two fully enclosed and heated 50-gallon wastewater holding tanks
- 17 - Damon's exclusive One Flush System® that allows you to empty your water tanks from one convenient location; a sprayer hose makes cleanups easy
- 18 - A standard exterior shower (in the utility hookup compartment) featuring hot and cold running water — perfect for hosing off dirty feet or for cleaning gear before you come inside
- 19 - Damon's electric, gear-driven slideout system with smooth, simple, push-button operation
- 20 - Computerized wheel alignment (part of Damon's 400-point StartRight Quality Assurance Program®) that helps provide a safe, trouble-free ride



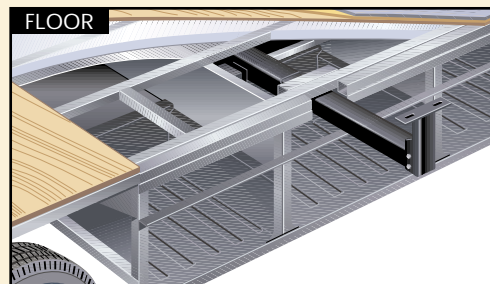
Storage space is always at a premium, but Damon makes sure you've got plenty in Ultrasport 2000. Consider our underfloor, exterior-access storage compartments. Most of them have 22"-high openings outside the main rails and 12" pass-through areas. All these compartments are made of rugged rotocast polyethylene for easy cleaning and maintenance. They're framed in steel, too, for extra durability and the best possible water seal. Other features include interior lighting that's operated by a switch near the motorhome's entry door; paddle-shaped handles that give you a good grip; and automotive-style latches that keep the doors shut. One-way kazoo valves in every storage compartment allow thorough cleaning; water drains right out.



Ultrasport 2000's seamless, one-piece EPDM rubber roof is so resistant to sun damage and the elements that it comes with a full 12-year warranty. It also provides excellent thermal and acoustical insulation. The entire roof assembly is crowned for extra strength and consists of an extruded aluminum frame, luan decking and highly energy-efficient block-foam insulation. Radius corners, along with the roof's crown, allow proper water runoff.



The gleaming Ice White® exterior of Ultrasport 2000 is made of smooth, durable, easy-to-clean fiberglass, vacuum-bond laminated in one piece. A high-gloss gelcoat finish heightens the appeal. For added strength and protection against leaks, all window and door perimeters are aluminum framed. Expanded polystyrene block-foam insulation — 1-1/2" in the floor as well as the sidewalls — increases the coach's energy efficiency and helps dampen sound.



You'll find one of the safest, most substantial foundations of any RV in Ultrasport 2000. It features heavy-duty steel trusses welded to the chassis for maximum strength. A fully enclosed underbelly protects the holding tanks, reduces wind resistance during travel and permits extended seasonal use. Undercoating and a foam seal act as additional barriers to the elements. Seamless, one-piece decking helps reduce squeaks and road noise. High-quality residential carpeting and padding top it all off, providing exceptional comfort as well as insulation. Damon's Gentle Ride® system reduces vibration and noise to give you a smoother, quieter, more comfortable travel experience.

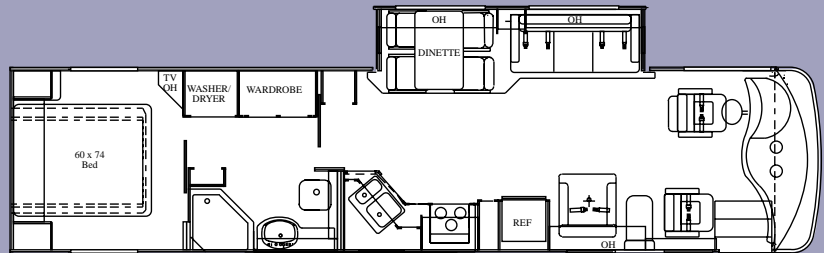


ULTRASPORT

FLOOR PLANS

MODEL 3670

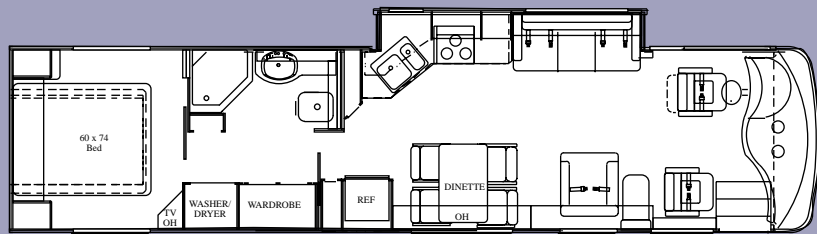
Chassis	Freightliner
Wheelbase (in.)	228
GVWR (lbs.)	26,350
GCWR (lbs.)	31,350
Overall length	37'6"
Overall width	102"
Overall height with A/C	12'
Fresh water system (appx. gal.)	95
Grey water (appx. gal.)	50
Black water (appx. gal.)	50
LP (lbs.)	128
Sleeping capacity	4



Slideout • Freestanding dinette • Neo-angle shower
Washer/dryer hookup

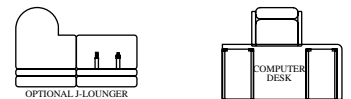
MODEL 3680

Chassis	Freightliner
Wheelbase (in.)	228
GVWR (lbs.)	26,350
GCWR (lbs.)	31,350
Overall length	37'6"
Overall width	102"
Overall height with A/C	12'
Fresh water system (appx. gal.)	95
Grey water (appx. gal.)	50
Black water (appx. gal.)	50
LP (lbs.)	128
Sleeping capacity	4

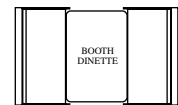


Slideout kitchen • Freestanding dinette • Neo-angle shower
Washer/dryer hookup

Options:



Models available: 3670 and 3680



Models available: 3670

SPECIFICATIONS

ULTRASPORT BATHROOM

	3670	3680
Full-height fiberglass tub or shower with door	S	S
Skylight in tub/shower	S	S
Medicine cabinet with solid-wood door and mirror	S	S
Porcelain toilet with sprayer	S	S
Power vent	S	S
Wallpaper border	S	S

ULTRASPORT BEDROOM

	3670	3680
Pillowtop mattress (60"x74")	S	S
Bedsread with throw pillows	S	S
Diamond-beveled mirror with designer headboard	S	S
Lined wardrobe with mirrored doors	S	S
Wardrobe lights	S	S
13" color TV	O	O
TV area and jack	S	S
AM/FM stereo	O	O
Jalousie windows	S	S
Day/night shades	S	S
Lambrequin window treatments	S	S
Pin-up lights	S	S

ULTRASPORT KITCHEN	3670	3680
Freestanding dinette with 4 chairs	S	S
Booth dinette with padded top and wood-edge table	O	N/A
Refrigerator - large, double-door	S	S
Refrigerator - large, double-door with icemaker	O	O
Refrigerator - solid-wood front	S	S
Side-by-side refrigerator with icemaker i.p.o. standard refrigerator and pantry	O	O
Solid-surface countertops	S	S
Double-bowl, composite sink (1 bowl oversized)	S	S
Two solid-surface sink covers	S	S
Single-lever faucet with integral sprayer	S	S
Pantry	S	S
Solid-wood cabinet doors throughout	S	S
Brass-style cabinet hardware	S	S
3-burner range and oven	S	S
Folding range cover	S	S
Mirrored backsplash behind stove	S	S
Lighted power range hood with monitor panel (includes LPG readout)	S	S
Microwave	S	S
Microwave convection	O	O
Fantastic® power vent	O	O
Wood-plank flooring	S	S
Wallpaper border	S	S
Mini blind	S	S
Fire extinguisher	S	S
Coffee maker	S	S

ULTRASPORT LIVING AREA	3670	3680
Hide-a-bed: cloth	S	N/A
Hide-a-bed: Ultra leather	O	N/A
Sofa bed: cloth*	O	S
Sofa bed: Ultra leather*	O	O
J-lounger: cloth**	O	O
J-lounger: Ultra leather**	O	O
Extra-large recliner with footrest: cloth	S	S
Extra-large recliner with footrest: ultra leather	O	O
Lounge table	S	S
Computer desk with chair	O	O
19" color TV with full-function remote in front overhead with antenna, booster and jack	S	S
VCR and control center	S	S
Web TV® with Internet access	O	O
Day/night shades	S	S
Living-room pin-up lights	S	S
Aisle lights	S	S
Decorator clock and mirror	S	S
Fabric ceiling	S	S
Lined overhead cabinets throughout	S	S
Nylon carpeting with stain treatment and padding	S	S

* Sofa bed must replace hide-a-bed in units with a J-lounger

** Not available with hide-a-bed

ULTRASPORT EXTERIOR	3670	3680
Gelcoat fiberglass walls	S	S
Aerodynamic fiberglass front cap	S	S
Aerodynamic fiberglass rear cap	S	S
Contoured front and rear integrated bumpers	S	S
Deluxe graphics package	S	S
White-framed radius-corner windows	S	S
Dual-pane windows	O	O
Radius-corner domed roof	S	S
Roof vents	S	S
Rubber roof	S	S
Custom-designed front entry door with screen	S	S
Awning rail	S	S
Side-mount patio awning	O	O
One-touch electric patio awning	O	O
Front-door awning	O	O
Awning over slideout	S	S
Pass-through basement storage	S	S
Easy-to-clean lighted rotocast storage compartments	S	S
Exterior storage compartment locks	S	S
Gas pistons on exterior storage doors	S	S
Sewer hose storage	S	S
Full-basement, wide-body design	S	S
2 porch lights	S	S
Fog lights	S	S

ULTRASPORT UTILITIES	3670	3680
Air conditioner: 13,500-BTU ducted central, front and rear	S	S
Air conditioner: low-profile (N/A with 5W solar battery charger)	O	O
Furnace: 35,000-BTU, electronic ignition, floor-ducted	S	S
5W chassis solar battery charger	O	O
Battery disconnect	S	S
Dual 6-volt auxiliary batteries	S	S
Generator: Onan 6.3 kw LP	S	S
Generator: diesel 7.5 kw	O	O
50-amp, 120-volt service	S	S
50-amp, 120-volt detachable power cord	S	S
55-amp, 12-volt power converter	S	S
Cable TV/satellite hookup	S	S
Telephone hookup	S	S
Exterior GFCI receptacle	S	S
Exterior shower	S	S
City water hookup	S	S
12-volt demand water pump	S	S
Water-heater by-pass kit	S	S
6-gallon gas water heater with electronic ignition	S	S
Water filtration system	S	S
Washer/dryer prep	O	O
Washer/dryer	O	O
Enclosed, heated potable water and holding tanks	S	S
Carbon-monoxide detector	S	S
LP gas detector	S	S
Smoke detector	S	S

Awnings not available on units sold in Canada

ULTRASPORT COCKPIT	3670	3680
Drivers' seat: Ultra leather reclining, 6-way power	S	S
Passenger's seat: Ultra leather, reclining	S	S
Molded ABS dash	S	S
Burl instrument panel	S	S
Full instrumentation	S	S
Dash fans	S	S
Electronically controlled dash air conditioning	S	S
Map lights	S	S
Electronic cruise control	S	S
Power steering	S	S
Douglas tilt/telescoping steering column	S	S
18" VIP steering wheel	S	S
Tinted wraparound windshield	S	S
Windshield privacy wrap	S	S
Protector® sun visors	S	S
Forward-mount bus-style power mirrors	S	S
Back-up monitor system	S	S
AM/FM cassette with 10-CD changer	S	S
Floor mats	S	S

ULTRASPORT CHASSIS	3670	3680
275HP Cummins ISB	S	S
Allison MD-3060 automatic transmission - 6 speed	S	S
Air-ride suspension	S	S
Layer of neoprene vibration dampener	S	S
Mud flaps (front and rear)	S	S
22.5" radial tires	S	S
Stainless steel wheel liners	S	S
In-block engine heater	S	S
Leveling jacks	S	S
Leece Neville 160-amp, 12-volt alternator	S	S
Full air brakes with auto slack-adjusters, front and rear	S	S
Jacobs Extrader exhaust brake	S	S
Hadley air horns	S	S
Bilstein shock absorbers, front and rear	S	S
Midland Pure-Air Plus heated air dryer	S	S
Emergency-start circuit	S	S
Trailer hitch	S	S
Under-hood light	S	S

S = Standard O = Optional

Damon
Value by Design

DAMON EXCLUSIVES

- The peace of mind that comes from knowing that your Ultrasport has passed a strenuous 400-point inspection test as part of Damon's StartRight Quality Assurance® program
- The benefits of TQS, Damon's exclusive Total Quality Service initiative — an example of the company's continuous improvement efforts; ask your dealer for details

WARRANTY INFORMATION:

One-piece rubber roof - 12 years

Awning - 5 years

Water heater - 2 years

Range - 2 years

Refrigerator - 2 years

Gas sensor - 2 years

Generator - 3 years

Power converter - 2 years

Everything else - 1 year



Cotswold



Windsor



Pearwood
(optional)



BlackTie



Cotillion



Light Oak
(standard)



INTRODUCING THE NEW ULTRASPORT 260:

DIESEL PUSHER POWER AT A GAS-COACH PRICE

Damon engineers are always looking for new ways to give you value. Their latest accomplishment is the Ultrasport 260 Diesel Pusher Motorhome. Like all Ultrasports, it too is built for diesel power right from the start — on a solid, new Freightliner XCS chassis. What contributes most to its affordable price is that it comes in shorter lengths. But you won't lack living space: Our slideout floor plans make sure you have plenty of room to "live large." Among the Ultrasport 260's most impressive features are:

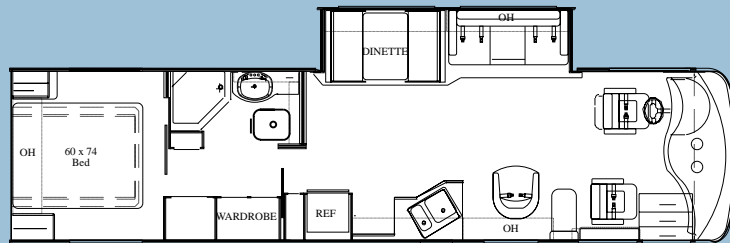
- A Cummins 5.9L ISB turbocharged diesel engine
- Allison 5-speed transmission
- A standard Jacobs exhaust brake
- Full air brakes with antilock technology
- Hadley air horns
- Big 22.5-inch tires with stainless steel wheel liners
- Custom-designed front-door entry
- Spacious Super-Slideout floorplans

ULTRASPORT 260

FLOOR PLANS

MODEL 3470

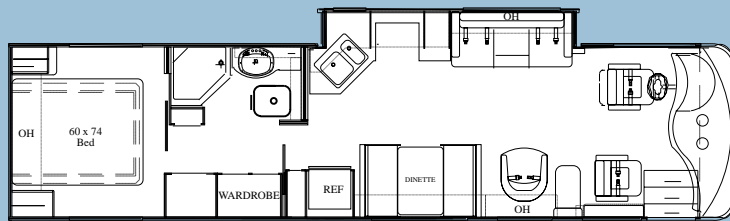
Chassis	Freightliner
Wheelbase (in.)	208
GVWR (lbs.)	22,000
GCWR (lbs.)	26,000
Overall length	35' 10"
Overall width	102"
Overall height with A/C	12'
Fresh water system (appx. gal.)	95
Grey water (appx. gal.)	50
Black water (appx. gal.)	50
LP (lbs.)	128
Sleeping capacity	4



Slideout • Freestanding dinette • Neo-angle shower
Washer/dryer hookup

MODEL 3480

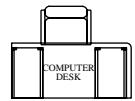
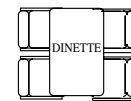
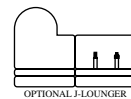
Chassis	Freightliner
Wheelbase (in.)	208
GVWR (lbs.)	22,000
GCWR (lbs.)	26,000
Overall length	35' 10"
Overall width	102"
Overall height with A/C	12'
Fresh water system (appx. gal.)	95
Grey water (appx. gal.)	50
Black water (appx. gal.)	50
LP (lbs.)	128
Sleeping capacity	4



Slideout kitchen • Freestanding dinette • Neo-angle shower
Washer/dryer hookup

Options:

Models available:
3470 and 3480



SPECIFICATIONS

ULTRASPORT 260 BATHROOM	3470	3480
Full-height fiberglass tub or shower with door	S	S
Skylight in tub/shower	S	S
Medicine cabinet with solid-wood door and mirror	S	S
Porcelain toilet with sprayer	S	S
Power vent	S	S
Wallpaper border	S	S

ULTRASPORT 260 BEDROOM	3470	3480
Pillowtop mattress (60"x74")	S	S
Bedsprad with throw pillows	S	S
Diamond-beveled mirror with designer headboard	S	S
Lined wardrobe with mirrored doors	S	S
Wardrobe lights	S	S
13" color TV	O	O
TV area and jack	S	S
AM/FM stereo	O	O
Jalousie windows	S	S
Day/night shades	S	S
Lambrequin window treatments	S	S
Pin-up lights	S	S

The Microsoft® Web TV Network™ service is available as a local call in most areas. Toll charges may apply. Web TV, Web TV Network, WebPIP, and the Web TV logo are either trademarks or registered trademarks of Microsoft Corporation in the United States and/or other countries. Monthly service subscription required.

Due to constant product improvements, the specifications, component parts and standard/optional equipment are subject to change without notice or obligation. Product photography or diagrams may show equipment that is optional. Damon Corporation reserves the right to make changes in prices and models and to discontinue models without notice or obligation. Components, parts or chassis may have been manufactured at times other than the model year indicated. All capacities are approximate and dimensions are nominal. All dry weights are based on standard model features and do not include optional features or equipment. Various RV components and features may differ to conform to local codes.

ULTRASPORT 260 KITCHEN	3470	3480
Freestanding dinette with 4 chairs	O	O
Booth dinette with padded top and wood-edge table	S	S
Refrigerator - large, double-door	S	S
Refrigerator - large, double-door with icemaker	O	O
Refrigerator - solid-wood front	S	S
Side-by-side refrigerator with icemaker i.p.o. standard refrigerator and pantry	O	O
Solid-surface countertops	S	S
Double-bowl, composite sink (1 bowl oversized)	S	S
Two solid-surface sink covers	S	S
Pantry	S	S
Solid-wood cabinet doors throughout	S	S
Brass-style cabinet hardware	S	S
3-burner range and oven	S	S
Folding range cover	S	S
Mirrored backsplash behind stove	S	S
Lighted power range hood with monitor panel (includes LPG readout)	S	S
Microwave	S	S
Microwave convection	O	O
Fantastic® power vent	O	O
Wood-plank flooring	S	S
Wallpaper border	S	S
Mini blind	S	S
Fire extinguisher	S	S

ULTRASPORT 260 LIVING AREA	3470	3480
Hide-a-bed: cloth	S	N/A
Hide-a-bed: Ultra leather	O	N/A
Sofa bed: cloth*	O	S
Sofa bed: Ultra leather*	O	O
J-lounger: cloth**	O	O
J-lounger: Ultra leather**	O	O
Extra-large recliner with footrest: cloth	S	S
Extra-large recliner with footrest: ultra leather	O	O
Lounge table	S	S
Computer desk with chair	O	O
19" color TV with full-function remote in front overhead with antenna, booster and jack	S	S
VCR and control center	S	S
Web TV® with Internet access	O	O
Day/night shades	S	S
Living-room pin-up lights	S	S
Aisle lights	S	S
Decorator clock and mirror	S	S
Fabric ceiling	S	S
Lined overhead cabinets throughout	S	S
Nylon carpeting with stain treatment and padding	S	S

* Sofa bed must replace hide-a-bed in units with a J-lounger

** Not available with hide-a-bed

ULTRASPORT 260 EXTERIOR	3470	3480
Gelcoat fiberglass walls	S	S
Aerodynamic fiberglass front cap	S	S
Aerodynamic fiberglass rear cap	S	S
Contoured front and rear integrated bumpers	S	S
Deluxe graphics package	S	S
White-framed radius-corner windows	S	S
Radius-corner domed roof	S	S
Roof vents	S	S
Rubber roof	S	S
Custom-designed front entry door with screen	S	S
Awning rail	S	S
Side-mount patio awning	O	O
One-touch electric patio awning	O	O
Front-door awning	O	O
Awning over slideout	S	S
Pass-through basement storage	S	S
Easy-to-clean lighted rotocast storage compartments	S	S
Exterior storage compartment locks	S	S
Gas pistons on exterior storage doors	S	S
Sewer hose storage	S	S
Full-basement, wide-body design	S	S
2 porch lights	S	S
Fog lights	S	S

ULTRASPORT 260 UTILITIES	3470	3480
Air conditioner: 13,500-BTU ducted central, front	S	S
Air conditioner: 13,500-BTU ducted central, rear	O	O
Air conditioner: low-profile (N/A with 5W solar battery charger)	O	O
Furnace: 35,000-BTU, electronic ignition, floor-ducted	S	S
5W chassis solar battery charger	O	O
Battery disconnect	S	S
Dual 6-volt auxiliary batteries	S	S
Generator: Onan 6.3 kw LP	S	S
50-amp, 120-volt service	S	S
50-amp, 120-volt detachable power cord	S	S
55-amp, 12-volt power converter	S	S
Cable TV/satellite hookup	S	S
Telephone hookup	S	S
Exterior GFCI receptacle	S	S
Exterior shower	S	S
City water hookup	S	S
12-volt demand water pump	S	S
Water-heater by-pass kit	S	S
6-gallon gas water heater with electronic ignition	S	S
Water filtration system	S	S
Washer/dryer prep	O	O
Washer/dryer	O	O
Enclosed, heated potable water and holding tanks	S	S
Carbon-monoxide detector	S	S
LP gas detector	S	S
Smoke detector	S	S

awnings not available on units sold in Canada
S = Standard O = Optional

ULTRASPORT 260 COCKPIT	3470	3480
Driver's seat: cloth	S	S
Driver's seat: Ultra leather, reclining	O	O
Driver's seat: 6-way power	O	O
Passenger's seat: cloth, reclining	S	S
Passenger's seat: Ultra leather, reclining	O	O
Molded ABS dash	S	S
Burl instrument panel	S	S
Full instrumentation	S	S
Dash fans	S	S
Electronically controlled dash air conditioning	S	S
Map lights	S	S
Electronic cruise control	S	S
Power steering	S	S
Douglas tilt/telescoping steering column	S	S
18" VIP steering wheel	S	S
Tinted wraparound windshield	S	S
Windshield privacy wrap	S	S
Protector® sun visors	S	S
Forward-mount bus-style power mirrors	S	S
Back-up monitor system	S	S
AM/FM cassette with 10-CD changer	S	S
Floor mats	S	S

ULTRASPORT 260 CHASSIS	3470	3480
260HP Cummins ISB	S	S
Allison T-1000 automatic transmission - 5 speed	S	S
Parabolic spring suspension	S	S
Layer of neoprene vibration dampener	S	S
Mud flaps (front and rear)	S	S
22.5" radial tires	S	S
Stainless steel wheel liners	S	S
In-block engine heater	S	S
Leveling jacks	S	S
Leece Neville 160-amp, 12-volt alternator	S	S
Full air brakes with auto slack-adjusters, front and rear	S	S
Jacobs Extrader exhaust brake	S	S
Hadley air horns	S	S
Bilstein shock absorbers, front and rear	S	S
Midland Pure-Air Plus heated air dryer	S	S
Emergency-start circuit	S	S
Trailer hitch	S	S
Under-hood light	S	S



RVIA

Damon
Value by Design



Your Ultrasport dealer:

Damon Corporation • P.O. Box 2888 • Elkhart, IN 46515
219-389-0179 • 800-577-5692
www.DamonRV.com