

UNBEATABLE POWER, PERFORMANCE,
LUXURY ... AND PRICE.

2001 ULTRA SPORT





You want a diesel motorhome. You think you can't afford it. Unless it's a diesel upgrade. But wait. You don't have to settle for that. Damon's got a real diesel motorhome at a diesel upgrade's price: the 2001 Ultrasport™. Not possible, you say? Well, when you consider how long Damon's been building diesels, not to mention its reputation for cost-efficient manufacturing, it makes perfect sense.

The 2001 Ultrasport was designed as a diesel from the ground up, with none of the compromises necessary to turn a gas-powered coach into a diesel. That alone cuts cost. Which, in turn, lets Damon provide more of the luxuries diesel RVers expect — and still offer the Ultrasport for less. What kind of luxuries are we talking about? Read on. And be sure to check out the floor plans and specifications at the back of this brochure for details.

- A custom-designed front entrance door makes it easier to get into and out of the coach than a conventional cab door.
- Ultrasport gets its incredible power from a 24-valve, 275-hp Cummins® diesel engine.
- Road performance is exceptional, thanks to Ultrasport's 6-speed Allison® transmission, full air brakes with antilock technology, air-ride suspension and a Jacobs® exhaust brake.
- An electric rear-view monitor system helps you back up safely and easily.
- All models feature a space-adding slideout with a sofa, ample overhead storage and elegant mirrored fascia with wood trim.



Model 3670 • Windsor decor • Light Oak

- Our unique StepSaver™ kitchen puts everything well within reach to make meal preparation quick and easy.
- Fabric-lined overhead cabinets reduce interior noise during travel.
- Cabinet ends are made of solid wood for added durability.
- Attractive, durable linoleum flooring is standard in the kitchen area (and in the bathroom). Hardwood plank flooring or hand-laid tile are options.
- Ultrasport provides an incredible amount of storage space — including massive pass-through basement storage compartments.

A MOVEABLE FEAST

2001 ULTRA SPORT

A SOFT REPOSE.

2001 ULTRASPORT



- For your entertainment, Ultrasport has a Sony® AM/FM/cassette player with a 10-disc CD changer.
- An optional Web TV Internet unit by Phillips Magnavox lets you “surf the net with your TV set.” Web TV Plus service also lets you send and receive e-mail and get stock quotes, news stories, local weather, sports scores and more right from your TV. Other features include seven days of onscreen interactive TV listings, one-touch VCR programming that easily lets you record your favorite programs and WebPIP, which lets you watch TV and surf the Internet at the same time.
- You’ll take comfort in knowing your 2001 Ultrasport has passed a strenuous 400-point inspection test as part of Damon’s StartRight Quality Assurance® program.
- Ultrasport also gives you the benefits of Damon’s exclusive Total Quality Service™ (TQS) initiative. Ask your dealer for details.

ULTRASPORT VALUE ALL AROUND



- Custom front entry door
- 6.3 Onan® LP generator, standard
- Bus-style sideview mirrors



- Easy-access engine door
- Backup monitor, standard
- 5000 lb. tow capacity



- Awning, standard
- Stainless steel wheel liners
- Optional Carefree® electric awning



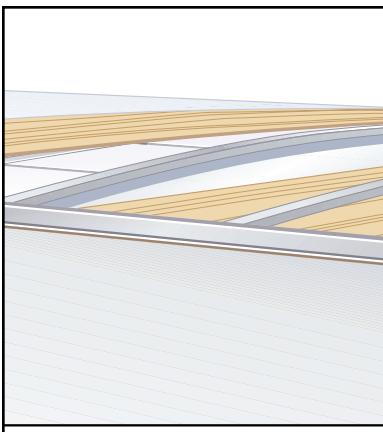
- Easy-turn, 50° cramp angle
- Hadley® air horns
- Dual arm windshield wipers



- Leveling jacks, standard
- Additional awning over slideout
- Smooth rack and pinion slideout operation



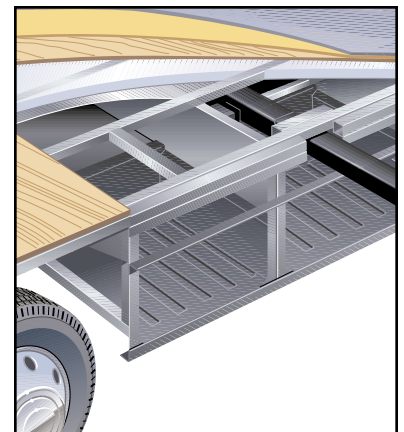
- Large baggage doors with automotive bulb gasket
- Big, roomy storage compartment of tough rotocast polyethylene
- Huge pass-through storage area



- ABS-ducted air conditioning with unblocked plenums
- Aluminum-frame crowned roof with beaded block-foam insulation
- Residential-styled ceiling



- Aluminum-framed walls and openings
- Vacuum-bonded walls with beaded block-foam insulation
- White powdercoated window frames



- Steel firewall and steel truss structure system
- Insulated floor system with structurewood and beaded block-foam insulation
- Heated tank area with insulated doors

DECOR



Vanderbilt



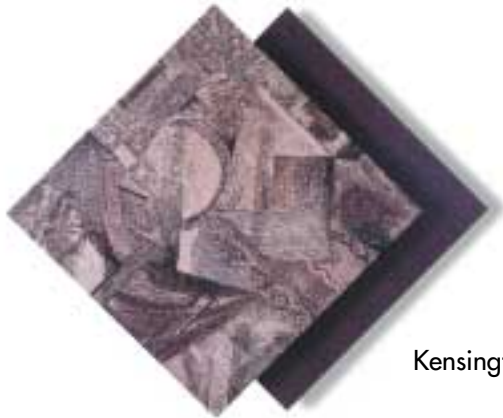
Light Oak
(standard)



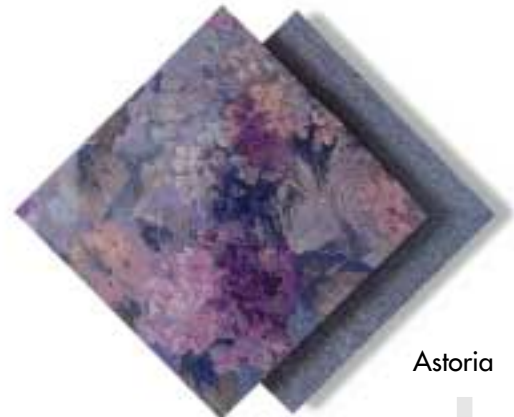
Maple
(optional)



Windsor



Kensington



Astoria

PAINT



Greige Taupe

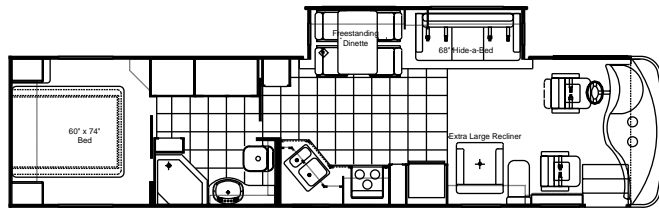


FLOOR PLANS

MODEL 3670

MODEL 3670

Chassis	Freightliner
Wheelbase (in.)	228
GVWR (lbs.)	26,350
GCWR (lbs.)	31,350
Overall length	37'11"
Overall width	100"
Overall height with A/C	12'
Fresh water system (appx. gal.)	100
Grey water (appx. gal.)	50
Black water (appx. gal.)	50
LP (lbs.)	128
Sleeping capacity	4

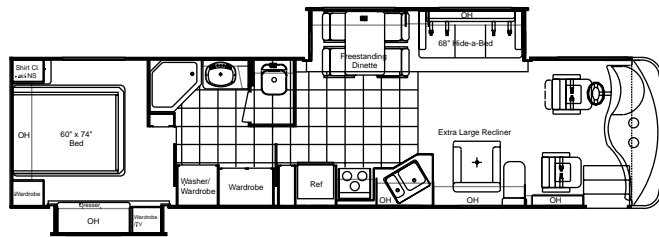


Slideout living area • Freestanding dinette • Neo-angle shower • Washer/dryer hookup

MODEL 3679

MODEL 3679

Chassis	Freightliner
Wheelbase (in.)	228
GVWR (lbs.)	26,350
GCWR (lbs.)	31,350
Overall length	37'11"
Overall width	100"
Overall height with A/C	12'
Fresh water system (appx. gal.)	100
Grey water (appx. gal.)	50
Black water (appx. gal.)	50
LP (lbs.)	128
Sleeping capacity	4

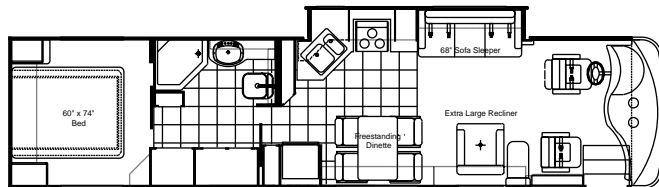


Slideout living area • Freestanding dinette • Neo-angle shower • Washer/dryer hookup

MODEL 3680

MODEL 3680

Chassis	Freightliner
Wheelbase (in.)	228
GVWR (lbs.)	26,350
GCWR (lbs.)	31,350
Overall length	37'11"
Overall width	100"
Overall height with A/C	12'
Fresh water system (appx. gal.)	100
Grey water (appx. gal.)	50
Black water (appx. gal.)	50
LP (lbs.)	128
Sleeping capacity	4

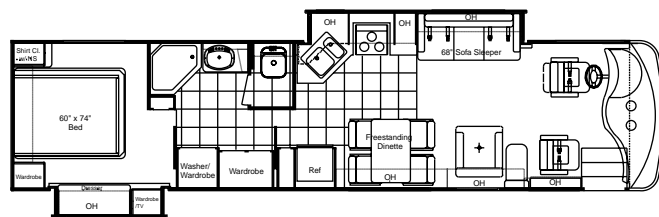


Slideout kitchen • Freestanding dinette • Neo-angle shower • Washer/dryer hookup

MODEL 3689

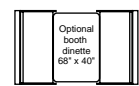
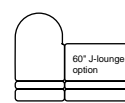
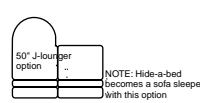
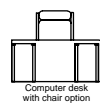
MODEL 3689

Chassis	Freightliner
Wheelbase (in.)	228
GVWR (lbs.)	26,350
GCWR (lbs.)	31,350
Overall length	37'11"
Overall width	100"
Overall height with A/C	12'
Fresh water system (appx. gal.)	100
Grey water (appx. gal.)	50
Black water (appx. gal.)	50
LP (lbs.)	128
Sleeping capacity	4



Slideout kitchen • Freestanding dinette • Neo-angle shower • Washer/dryer hookup

Options:



Models available: 3670, 3679, 3680, 3689

3670, 3679, 3689

3680

3670, 3679

SPECIFICATIONS

Ultrasport Chassis	3670	3679	3680	3689
275-hp Cummins® ISB	S	S	S	S
300-hp Caterpillar® engine	O	O	O	O
Allison® MH-3000 automatic transmission — 6-speed	S	S	S	S
Jacobs® Extarder exhaust brake	S	S	S	S
Full air brakes with auto slack adjusters front and rear	S	S	S	S
Air-ride suspension	S	S	S	S
Bilstein® shock absorbers, front and rear	S	S	S	S
Leveling jacks	S	S	S	S
22.5" radial tires	S	S	S	S
Stainless steel wheel liners	S	S	S	S
Front and rear mud flaps	S	S	S	S
Trailer hitch (5,000 lbs.)	S	S	S	S
Under-hood light	S	S	S	S
Layer of neoprene vibration dampener	S	S	S	S
Emergency start circuit	S	S	S	S
Hadley® air horns	S	S	S	S
In-block engine heater	S	S	S	S
Leece Neville® 160-amp, 12-volt alternator	S	S	S	S
Midland® Pure-Air Plus™ heated air dryer	S	S	S	S

Ultrasport Kitchen	3670	3679	3680	3689
Freestanding dinette with 4 chairs	S	S	S	S
Booth dinette with padded top and wood-edge table	O	O	N/A	O
Refrigerator: large, double door	S	S	S	S
Refrigerator: large, double door with icemaker	O	O	O	O
Refrigerator: side-by-side with icemaker (IPO refrigerator and pantry)	O	O	O	O
Refrigerator: solid wood front*	S	S	S	S
Pantry	S	S	S	S
3-burner range and oven	S	S	S	S
Cooktop IPO range and oven	O	O	O	O
Folding range cover with solid-surface accents	S	S	S	S
Microwave oven	S	S	S	S
Microwave/convection oven	O	O	O	O
Solid-surface countertops	S	S	S	S
Double-bowl sink with oversized dish bowl	S	S	S	S
Two solid-surface sink covers	S	S	S	S
Single lever faucet with sprayer	S	S	S	S
Lighted power range hood and monitor panel (includes LPG readout)	S	S	S	S
Fantastic® power vent	O	O	O	O
Solid-wood cabinet doors throughout*	S	S	S	S
Brass-style cabinet hardware	S	S	S	S
Linoleum flooring package (kitchen and bath)	S	S	S	S
Wood-plank flooring package* (kitchen and bath)	O	O	O	O
Hand-laid tile flooring package (kitchen and bath)	O	O	O	O
Wallpaper border	S	S	S	S
Mini blind	S	S	S	S
Fire extinguisher	S	S	S	S

* Oak or maple

Ultrasport Exterior	3670	3679	3680	3689
Gelcoat fiberglass walls	S	S	S	S
White exterior	S	S	S	S
Aerodynamic front fiberglass cap	S	S	S	S
Fiberglass rear cap	S	S	S	S
Wide-body design	S	S	S	S
Contoured front and rear integrated bumpers	S	S	S	S
Deluxe graphics package	S	S	S	S
Paint package	O	O	O	O
Radius-corner domed roof	S	S	S	S
Roof vents	S	S	S	S
Rubber roof	S	S	S	S
White framed radius corner windows	S	S	S	S
Dual pane windows	O	O	O	O
Awning rail	S	S	S	S
Side-mount awning over slideout	S	S	S	S
Side-mount manual front door awning*	O	O	O	O
A&E® manual patio awning*	O	O	O	O
Carefree® electric patio awning*	O	O	O	O
Remote control for Carefree® electric patio awning	O	O	O	O
Full basement, pass-through storage	S	S	S	S
Easy-to-clean, lighted, rotocast storage compartments	S	S	S	S
Gas pistons on exterior storage doors	S	S	S	S
Locking exterior storage doors	S	S	S	S
Sewer hose storage	S	S	S	S
Custom-designed front entry door with screen	S	S	S	S
Rear ladder	S	S	S	S
Two porch lights	S	S	S	S
Fog lights	S	S	S	S

* Awnings not available on wide-body models in some locations. Check local regulations for applicable laws.

Ultrasport Bedroom	3670	3679	3680	3689
Pillow top mattress	S	S	S	S
Bedsread with throw pillows	S	S	S	S
Diamond-beveled mirror with designer headboard	S	S	S	S
TV area and jack	S	S	S	S
Day/night shades	S	S	S	S
Lambrequin window treatments	S	S	S	S
Jalousie windows	S	S	S	S
Pin-up lights	S	S	S	S
Wardrobe lights	S	S	S	S
Lined wardrobe with mirrored doors	S	S	S	S
13" color TV	O	O	O	O
AM/FM stereo	O	O	O	O

S = Standard O = Optional N/A = Not Available
IPO = "In place of"

SPECIFICATIONS

Ultrasport Living Area	3670	3679	3680	3689
Hide-a-bed: cloth	S	S	N/A	N/A
Hide-a-bed: ultra-leather	O	O	N/A	N/A
Sofa sleeper: cloth*	O	O	S	S
Sofa sleeper: ultra-leather*	O	O	O	O
J-lounger: cloth**	O	O	O	O
J-lounger: ultra-leather**	O	O	O	O
Extra-large recliner with footrest: cloth	S	S	S	S
Extra-large recliner with footrest: ultra-leather	O	O	O	O
Lounge table	S	S	S	S
Computer desk with chair***	O	O	O	O
19" color TV with full-function remote in front overhead	S	S	S	S
TV antenna, booster and jack	S	S	S	S
VCR and control center	S	S	S	S
Web TV™ with Internet access	O	O	O	O
Living room pin-up lights	S	S	S	S
Aisle lights	S	S	S	S
Decorator clock and mirror	S	S	S	S
Day/night shades	S	S	S	S
Fabric ceiling	S	S	S	S
Lined overhead cabinets throughout	S	S	S	S
Nylon carpeting with stain treatment & padding	S	S	S	S

* Sofa sleeper must replace hide-a-bed in units with a J-lounger

** Not available with hide-a-bed

*** Not available with J-lounger

Ultrasport Cockpit	3670	3679	3680	3689
Molded ABS dash	S	S	S	S
Burl instrument panel	S	S	S	S
Full instrumentation	S	S	S	S
Electronic cruise control	S	S	S	S
Autopro® computer/navigator	O	O	O	O
Power steering	S	S	S	S
Padded VIP steering wheel	S	S	S	S
Douglas® tilt/telescoping steering column	S	S	S	S
Dash fans	S	S	S	S
Electronically controlled dash air conditioning	S	S	S	S
Tinted wraparound windshield	S	S	S	S
Windshield privacy wrap	S	S	S	S
Protector® sun visors	S	S	S	S
Forward-mount bus-style power mirrors	S	S	S	S
Backup monitor system	S	S	S	S
Driver's seat: ultra-leather with 6-way power, reclining	S	S	S	S
Passenger seat: ultra-leather, reclining	S	S	S	S
3-point integrated seat and shoulder belts	S	S	S	S
Floor mats	S	S	S	S
Map lights	S	S	S	S
4-speaker audio	S	S	S	S
Upgrade AM/FM/cassette with 10-CD changer	S	S	S	S

Ultrasport Bathroom	3670	3679	3680	3689
Power vent	S	S	S	S
Porcelain toilet with sprayer	S	S	S	S
Full-height fiberglass tub or shower with door	S	S	S	S
Skylight in shower	S	S	S	S
Medicine cabinet with solid-wood door and mirror*	S	S	S	S
Wallpaper border	S	S	S	S

* Oak or maple

Ultrasport Utilities	3670	3679	3680	3689
Air conditioner: 13,500-BTU ducted central front and rear	S	S	S	S
Air conditioner: low-profile (N/A with 5-watt solar battery charger)	O	O	O	O
Heat pump with 15,000-BTU A/C & 12.7-BTU heat	O	O	O	O
35,000-BTU electronic ignition floor-ducted furnace	S	S	S	S
Generator: Onan® 6.3 kW LP	S	S	S	S
Generator: Onan® 7.5 kW diesel	O	O	O	O
5-watt chassis solar battery charger	O	O	O	O
Battery disconnect	S	S	S	S
Dual 6-volt auxiliary batteries	S	S	S	S
Thermoil batteries, house	S	S	S	S
400-watt entertainment inverter	O	O	O	O
2000-watt inverter (N/A with 400-watt inverter)	O	O	O	O
Exterior GFCI receptacle	S	S	S	S
Exterior shower	S	S	S	S
Cable TV/satellite hookup	S	S	S	S
Pre-wired for roof-mounted satellite dish	S	S	S	S
DSS manual satellite	O	O	O	O
Telephone hookup	S	S	S	S
Water filtration system	S	S	S	S
City water hookup	S	S	S	S
12-volt demand water pump	S	S	S	S
Water heater bypass kit	S	S	S	S
10-gallon gas/electric water heater	S	S	S	S
Enclosed heated potable and holding tanks	S	S	S	S
Blackwater tank flush	S	S	S	S
Washer/dryer prep	S	S	S	S
Washer/dryer combo	O	O	O	O
50-amp, 120-volt service	S	S	S	S
50-amp, 120-volt detachable power cord	S	S	S	S
55-amp, 12-volt power converter	S	S	S	S
Carbon monoxide detector	S	S	S	S
LP gas detector	S	S	S	S
Smoke detector	S	S	S	S

S = Standard

O = Optional

N/A = Not Available

ULTRASPORT 260 OFFERS DIESEL PUSHER POWER AT A GAS-COACH PRICE.

2001 ULTRASPORT 260



Like all Ultrasports, 260s are built for diesel power from the ground up — in this case, however, on solid Freightliner® XCS chassis. Their extra-affordability is due in large part to their shorter lengths (compared to other UltraSport models). You won't lack living space, though: Damon's slideout floor plans make sure you have plenty of room to "live large."

- All the power you need for your UltraSport 260 comes from a Cummins® 5.9L ISB turbocharged diesel engine.
- Further contributing to the 260's solid road performance are an Allison® 5-speed transmission, full air brakes with antilock technology, a standard Jacobs® exhaust brake, and big 22.5" tires with corrosion-resistant stainless steel wheel liners.

Plush pillowtop mattress



Solid-surface kitchen countertop



Web TV, optional



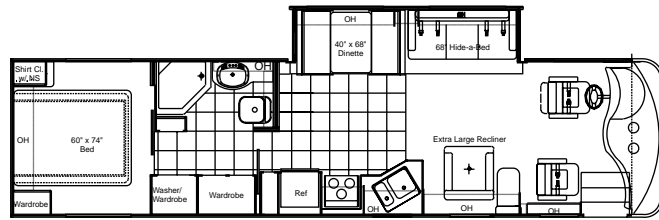
DAMON
VALUES

FLOOR PLANS

MODEL 3470

Chassis	Freightliner
Wheelbase (in.)	208
GVWR (lbs.)	22,000
GCWR (lbs.)	26,000
Overall length	36'4"
Overall width	100"
Overall height with A/C	12'
Fresh water system (appx. gal.)	100
Grey water (appx. gal.)	50
Black water (appx. gal.)	50
LP (lbs.)	128
Sleeping capacity	4

MODEL 3470

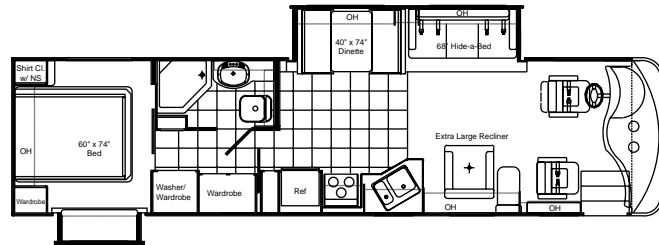


Slideout living area • Booth dinette • Neo-angle shower • Washer/dryer hookup

MODEL 3479

Chassis	Freightliner
Wheelbase (in.)	208
GVWR (lbs.)	22,000
GCWR (lbs.)	26,000
Overall length	36'4"
Overall width	100"
Overall height with A/C	12'
Fresh water system (appx. gal.)	100
Grey water (appx. gal.)	50
Black water (appx. gal.)	50
LP (lbs.)	128
Sleeping capacity	4

MODEL 3479

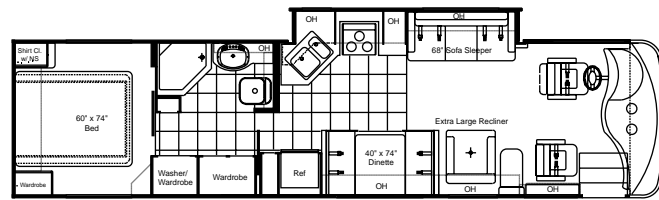


Slideout living area • Slideout wardrobe • Neo-angle shower • Washer/dryer hookup

MODEL 3480

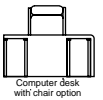
Chassis	Freightliner
Wheelbase (in.)	208
GVWR (lbs.)	22,000
GCWR (lbs.)	26,000
Overall length	36'4"
Overall width	100"
Overall height with A/C	12'
Fresh water system (appx. gal.)	100
Grey water (appx. gal.)	50
Black water (appx. gal.)	50
LP (lbs.)	128
Sleeping capacity	4

MODEL 3480



Slideout kitchen • Booth dinette • Neo-angle shower • Washer/dryer hookup

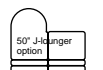
Options:



3470, 3479,
3480, 3489



3470, 3479,
3480, 3489



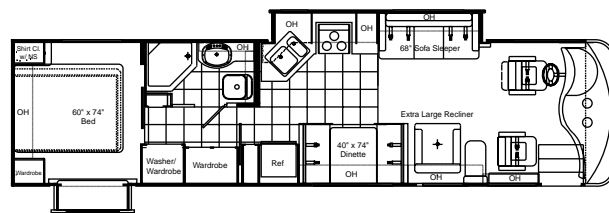
NOTE: Hide-a-bed becomes a sofa sleeper with this option

3470, 3479,
3480, 3489

MODEL 3489

Chassis	Freightliner
Wheelbase (in.)	208
GVWR (lbs.)	22,000
GCWR (lbs.)	26,000
Overall length	36'4"
Overall width	100"
Overall height with A/C	12'
Fresh water system (appx. gal.)	100
Grey water (appx. gal.)	50
Black water (appx. gal.)	50
LP (lbs.)	128
Sleeping capacity	4

MODEL 3489



Slideout kitchen • Slideout wardrobe • Neo-angle shower • Washer/dryer hookup

Tile floor, optional (3670, 3679, 3680, 3689)



Pre-wired for satellite hook up



Double-bowl sink



260 SPECIFICATIONS

Ultrasport 260 Exterior	3470	3479	3480	3489
Gelcoat fiberglass walls	S	S	S	S
Aerodynamic front fiberglass cap	S	S	S	S
Aerodynamic rear fiberglass cap	S	S	S	S
Contoured front and rear integrated bumpers	S	S	S	S
Wide-body design	S	S	S	S
Deluxe graphics package	S	S	S	S
Paint package	O	O	O	O
Radius-corner domed roof	S	S	S	S
Roof vents	S	S	S	S
Rubber roof	S	S	S	S
White-framed radius corner windows	S	S	S	S
Dual-pane windows	O	O	O	O
Awning rail	S	S	S	S
Side-mounted awning over slideout	S	S	S	S
Side-mounted manual front door awning*	O	O	O	O
A&E® manual patio awning*	O	O	O	O
Carefree® electric patio awning*	O	O	O	O
Remote control for Carefree® electric patio awning	O	O	O	O
Full basement, pass-through storage	S	S	S	S
Easy-to-clean, lighted, rotocast storage compartments	S	S	S	S
Gas pistons on exterior storage doors	S	S	S	S
Locking exterior storage doors	S	S	S	S
Rear ladder	O	O	O	O
Sewer hose storage	S	S	S	S
Custom-designed front entry door with screen	S	S	S	S
Two porch lights	S	S	S	S
Fog lights	S	S	S	S

* Awnings not available on wide-body models in some locations. Check local regulations for applicable laws.

Ultrasport 260 Bedroom	3470	3479	3480	3489
Pillow top mattress	S	S	S	S
Bedspring with throw pillows	S	S	S	S
Diamond-beveled mirror with designer headboard	S	S	S	S
TV area and jack	S	S	S	S
Day/night shades	S	S	S	S
Lambrequin window treatments	S	S	S	S
Jalousie windows	S	S	S	S
Pin-up lights	S	S	S	S
Wardrobe lights	S	S	S	S
Lined wardrobe with mirrored doors	S	S	S	S
13" color TV	O	O	O	O
AM/FM stereo	O	O	O	O

Ultrasport 260 Living Area	3470	3479	3480	3489
Hide-a-bed: cloth	S	S	N/A	N/A
Hide-a-bed: ultra-leather	O	O	N/A	N/A
Sofa sleeper: cloth*	O	S	O	S
Sofa sleeper: ultra-leather*	O	O	O	O
J-lounger: cloth**	O	O	O	O
J-lounger: ultra-leather**	O	O	O	O
Extra-large recliner with footrest: cloth	S	S	S	S
Extra-large recliner with footrest: ultra-leather	O	O	O	O
Lounge table	S	S	S	S
Computer desk with chair (N/A with J-lounger)	O	O	O	O
19" color TV with full-function remote in front overhead	S	S	S	S
TV antenna, booster and jack	S	S	S	S
VCR and control center	S	S	S	S
Web TV Network™ with Internet access	O	O	O	O
Living room pin-up lights	S	S	S	S
Aisle lights	S	S	S	S
Decorator clock and mirror	S	S	S	S
Day/night shades	S	S	S	S
Fabric ceiling	S	S	S	S
Lined overhead cabinets throughout	S	S	S	S
Nylon carpeting with stain treatment & padding	S	S	S	S

* Sofa sleeper must replace hide-a-bed in units with a J-lounger

**Not available with hide-a-bed

Ultrasport 260 Cockpit	3470	3479	3480	3489
Driver's seat: cloth, reclining	S	S	S	S
Passenger seat: cloth, reclining	S	S	S	S
Driver's seat: with 6-way power	O	O	O	O
Captain's chairs: ultra-leather (set of two)	O	O	O	O
Molded ABS dash	S	S	S	S
Burl instrument panel	S	S	S	S
Full instrumentation	S	S	S	S
Electronic cruise control	S	S	S	S
Power steering	S	S	S	S
Padded VIP steering wheel	S	S	S	S
Douglas® tilt/telescoping steering column	S	S	S	S
Dash fans	S	S	S	S
Electronically controlled dash air conditioning	S	S	S	S
Tinted wraparound windshield	S	S	S	S
Windshield privacy wrap	S	S	S	S
Protector® sun visors	S	S	S	S
Forward-mount bus-style power mirrors	S	S	S	S
Backup monitor system	S	S	S	S
Autopro® computer/navigator	O	O	O	O
4-speaker audio	S	S	S	S
3-point integrated seat and shoulder belts	S	S	S	S
Floor mats	S	S	S	S
Map lights	S	S	S	S
Upgrade AM/FM/cassette with 10-CD changer	S	S	S	S

S = Standard O = Optional N/A = Not Available

260 SPECIFICATIONS

Ultrasport 260 Utilities 3470 3479 3480 3489

Air conditioner: 13,500-BTU ducted central, front	S	S	S	S
Air conditioner: 13,500-BTU ducted central, rear	O	O	O	O
Air conditioner: low-profile (N/A with 5-watt solar battery charger)	O	O	O	O
5-watt chassis solar battery charger	O	O	O	O
Battery disconnect	S	S	S	S
Dual 6-volt auxiliary batteries	S	S	S	S
Thermoil batteries, house	S	S	S	S
Generator: Onan® 6.3 kW LP	S	S	S	S
Generator: Onan® 7.5 kW diesel	O	O	O	O
400-watt entertainment inverter	O	O	O	O
2000-watt inverter (N/A with 400-watt inverter)	O	O	O	O
Exterior GFCI receptacle	S	S	S	S
Exterior shower	S	S	S	S
Cable TV/satellite hookup	S	S	S	S
Pre-wired for roof-mount satellite dish	S	S	S	S
DSS manual satellite	O	O	O	O
Telephone hookup	S	S	S	S
Water filtration system	S	S	S	S
City water hookup	S	S	S	S
12-volt demand water pump	S	S	S	S
Water heater bypass kit	S	S	S	S
10-gallon gas/electric water heater	S	S	S	S
Enclosed heated potable and holding tanks	S	S	S	S
Washer/dryer prep	S	S	S	S
Washer/dryer combo	O	O	O	O
50-amp, 120-volt service	S	S	S	S
50-amp, 120-volt detachable power cord	S	S	S	S
55-amp, 12-volt power converter	S	S	S	S
35,000-BTU electronic ignition floor-ducted furnace	S	S	S	S
Carbon monoxide detector	S	S	S	S
LP gas detector	S	S	S	S
Smoke detector	S	S	S	S
Blackwater tank flush	S	S	S	S
Fire extinguisher	S	S	S	S

Ultrasport 260 Bathroom 3470 3479 3480 3489

Full-height fiberglass shower with door	S	S	S	S
Skylight in shower	S	S	S	S
Porcelain toilet with sprayer	S	S	S	S
Power vent	S	S	S	S
Medicine cabinet with solid-wood door and mirror*	S	S	S	S
Wallpaper border	S	S	S	S

* Oak or maple

Ultrasport 260 Kitchen 3470 3479 3480 3489

Freestanding dinette with 4 chairs	O	O	O	O
Booth dinette with padded top and wood-edge table	S	S	S	S
Refrigerator: large, double-door	S	S	S	S
Refrigerator: large, double-door with icemaker	O	O	O	O
Refrigerator: side-by-side with icemaker (IPO standard refrigerator and pantry)	O	O	O	O
Refrigerator: solid-wood front*	S	S	S	S
Pantry	S	S	S	S
3-burner range and oven	S	S	S	S
Cooktop IPO range and oven	O	O	O	O
Folding range cover with solid-surface accents	S	S	S	S
Microwave oven	S	S	S	S
Microwave/convection oven	O	O	O	O
Solid-surface countertops	S	S	S	S
Double-bowl sink (one bowl oversized)	S	S	S	S
Two solid-surface sink covers	S	S	S	S
Lighted power range hood and monitor panel (includes LPG readout)	S	S	S	S
Fantastic® power vent	O	O	O	O
Solid wood cabinet doors throughout*	S	S	S	S
Brass-style cabinet hardware	S	S	S	S
Linoleum flooring package (kitchen and bath)	S	S	S	S
Wood-plank flooring package* (kitchen and bath)	O	O	O	O
Wallpaper border	S	S	S	S
Mini blinds	S	S	S	S

* Oak or maple

Ultrasport 260 Chassis 3470 3479 3480 3489

260-hp Cummins® ISB	S	S	S	S
Allison® T-1000 automatic transmission — 5-speed	S	S	S	S
Jacobs® Extarder exhaust brake	S	S	S	S
Full air brakes with auto-slack adjusters front and rear	S	S	S	S
Parabolic spring suspension	S	S	S	S
Monroe® hydraulic shock absorbers, front and rear	S	S	S	S
Leveling jacks	S	S	S	S
22.5" radial tires	S	S	S	S
Stainless steel wheel liners	S	S	S	S
Front and rear mud flaps	S	S	S	S
Trailer hitch (5,000 lbs.)	S	S	S	S
Under-hood light	S	S	S	S
Layer of neoprene vibration dampener	S	S	S	S
Emergency start circuit	S	S	S	S
Hadley® air horns	S	S	S	S
In-block engine heater	S	S	S	S
Leece Neville® 160-amp, 12-volt alternator	S	S	S	S
Midland® Pure-Air Plus™ heated air dryer	S	S	S	S

S = Standard

O = Optional

N/A = Not Available

IPO = "In place of"



Your Ultrasport dealer:

The Microsoft® Web TV Network™ service is available as a local call in most areas. Toll charges may apply. Web TV, Web TV Network, WebPIP, and the Web TV logo are either trademarks or registered trademarks of Microsoft Corporation in the United States and/or other countries. Monthly service subscription required.

Due to constant product improvements, the specifications, component parts and standard/optional equipment are subject to change without notice or obligation. Product photography or diagrams may show equipment that is optional. Damon Corporation reserves the right to make changes in prices and models and to discontinue models without notice or obligation. Components, parts or chassis may have been manufactured at times other than the model year indicated. All capacities are approximate and dimensions are nominal. All dry weights are based on standard model features and do not include optional features or equipment. Various RV components and features may differ to conform to local codes.

DC 10/00
© 2000 Damon Corporation
Printed in U.S.A.

Damon Corporation • P.O. Box 2888 • Elkhart, IN 46515
219-389-0179 • 800-577-5692 www.DamonRV.com

DAMON® ULTRASPORT™ MOTORHOME FOR 2001

