

The Breadth of the Planning Portfolio

Travis Creel, Planner, Regional Planning and Environmental Division South, MVD

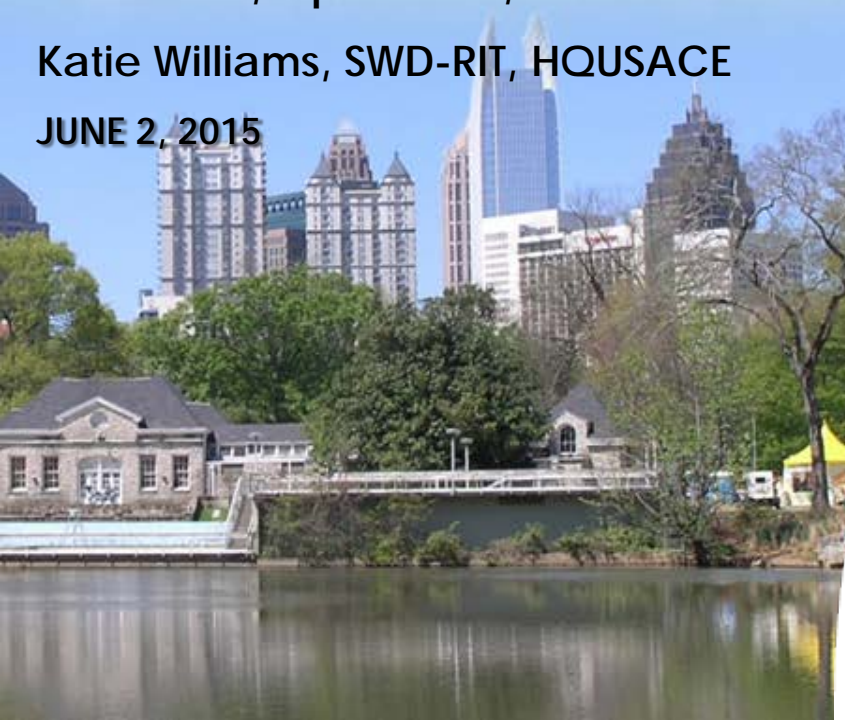
Eric Halpin, Special Assistant for Dam and Levee Safety, HQUSACE

Lisa Kiefel, PCoP, HQUSACE

Bob Leitch, Operations, HQUSACE

Katie Williams, SWD-RIT, HQUSACE

JUNE 2, 2015



Objectives

- Familiarity with the project life cycle
- Recognize where planning is needed and how to get involved
- Understand the roles and responsibilities of the Planner at different stages



**PLANNING SMART
BUILDING STRONG®**

Planning in the Project Life Cycle

- Planning fits throughout the Project Life Cycle
 - ▶ Investigations
 - ▶ Design
 - ▶ Construction
 - ▶ O&M
 - ▶ Divestitures
- Think about how the exchange of knowledge happens? Thoughts on how it could happen better?



Big 'P' and Little 'p'

- Big Planning - Planners are Lead
- Little planning – Planners are team members or very small \$



PLANNING SMART
BUILDING STRONG®

Investigations Funding

FY15 - Work Plan \$122M; President's Budget \$80M

45 Continuing

40 Completions; 7 PED, 33 Feas

10 New Starts

95 studies \$42.6M

Remaining Items \$62.2M

FY16 - President's Budget - \$97M

14 Completions; 2 PED and 12 Feasibility Studies

41 Continuing

0 New Starts

55 studies \$36.4 M

Remaining Items \$60.6 M

2 New Remaining Items – North Atlantic Focus Studies and Disposition Studies



Investigations

■ Specifically Authorized – Big P

▶ Feasibility Studies, includes GRRs

- 50/50 cost share and 3x3x3
- This is a study leading to either 1) a recommendation for authorization of improvements where there is no existing authorization or recommendation for authorization; or 2) a determination of a lack of Federal interest.

▶ Watershed Assessments

- 75/25 cost share
- Section 729 of WRDA of 1986 authorizes the Corps of Engineers to study the water needs of river basins and regions of the United States, in consultation with State, interstate and local governmental entities and results in a Watershed Plan

▶ Comprehensive Studies

- Cost share and scope depends on authority
- The work that can be done under a comprehensive or basin-wide study will depend on the specific authority. HQUSACE implementation guidance is required before proceeding on a comprehensive or basin-wide study.



Investigations

- Remaining Items – Little P
 - ▶ 62% of our Investigations budget (\$60.5M)
 - ▶ 33 Items, partial list:
 - \$ 18.1M R&D
 - \$ 15.0M Floodplain Mgmt Services
 - \$ 6.0M National FRM Program
 - \$ 5.5M Planning Assistance to States
 - \$ 1.0M North Atlantic Coast Focus Areas
 - \$ 0.8M Disposition of Completed Projects



**PLANNING SMART
BUILDING STRONG®**

FPMS Program Purpose

- The Flood Plain Management Services (FPMS) program is to advise, recommend, educate, inform and provide technical support to others, both external and internal, so they can make informed decisions with respect to floodplain management.
- The FPMS program supports the full range of information and technical services as well as planning guidance, this program is well-suited to support the mission of the Flood Risk Management Program. The FPMS program is a critical tool in transforming the US Army Corps of Engineers (USACE) into a risk-managing organization. Risk communication efforts can be completed using the FPMS program.



PAS Program Purpose

- The Planning Assistance to States (PAS) program supports any effort or service pertaining to the planning for water and related resources of a drainage basin, watersheds or ecosystems or larger region of a state, for which the Corps has expertise. The planning process can extend through the functional design process and the preparation of generic structural design.



Construction

- ▶ Continuing Authorities Program (CAP) – KIEFEL
- ▶ Post Authorization (can be performed in PED) - CREEL



CAP Purpose

Congress provided the Corps with standing authorities to study and build specific water resource projects.

These projects:

- Need to be requested by the Sponsor
- Do not need Congressional authorization
- Implement quickly
- Have limited scope and complexity
- Have established Federal Cost limits
- Do not compete with GI for prioritization



CAP FY15 and FY16

FY15

- Appropriations \$36.850M/8 Sections
- \$83.2M Carryover into FY15
- Available: \$120.7M
- Anticipated Obligation \$40-60M

FY16

- P-bud \$3.5M
- House \$23.75M
- Senate \$20.5
- Anticipate \$80-100M available

New Starts

- FY13 – FY15 110 Initiated
- Quarterly



Post Authorization Purpose

- Undertaken pursuant to project specific construction authorities
- May be necessary if:
 - ▶ Significant period of time has elapsed or;
 - ▶ Conditions have changed significantly

Post Authorization Study

(Process)

VS.

Post Authorization Change

(Potential Results)



Post Authorization

Varying Scopes and Varying Names

ERR Level 3

PACR

Master Plan/EIS

Validation Report

Chief's Report

ERR Level 2

Project Description Document (PDD)

~~General Design Memorandum (GDM)~~

Engineering Documentation Report (EDR)

EIS

Director's Report

Letter Report

Dam Safety Report

Special Report

Economic Reevaluation Report (ERR)

Decision Document

EA

General Reevaluation Report (GRR)

Limited Reevaluation Report (LRR)

~~Design Memorandum (DM)~~

SEIS

Design Documentation Report (DDR)

Construction Report

Economic Update

ERR Level 1

Levee Safety Report



Post Authorization Guidelines

- ER 1105-2-100, Chapter 4, b. Post Authorization Studies and Reports.
- ER 1105-2-100, Appendix G, Section I and Section III (PAC).

Guidance Forth Coming :

- Validation Study - Replaces the use of Limited Reevaluation studies for reexamination of project justification, including the economics and/or environmental effects, that does not require reformulation of alternatives.
 - ▷ May be carried out using any funds appropriated for the project.
 - ▷ Study cost is shared under the applicable Design Agreement or Project Partnership Agreement.
 - ▷ Example: Section 902 Post Authorization Study
 - Section 902 Post Authorization Reports are reviewed and approved at HQUSACE and may require additional Authorization.



Post Authorization Opportunities

► Drivers of the Big 'P' and Little 'p'

- Give some thought to the scope.
 - ▷ What has changed?
 - ▷ What stage is the construction in?
 - ▷ What was the original project purpose ?
- If there is a change, what are the consequences of the change?
- Level of approval for the change.

■ Examples:

- Economic Update Level 1 = p
- Economic Update Level 2 = p
- Economic Update Level 3 = p to P
- Economic Update Level 4 = P (Scope is beyond an economic update, switch to GRR)
- EDR or DDR = p (Review of Section 902 Limit)
- SEIS/Mitigation Planning = p



Breadth of Planning: Safety

- Eric Halpin



Breadth of Planning: Ops CoP

What is project lifecycle?

Feasibility ➡ Design ➡ Construction ➡ O&MRRR ➡ Disposition

What is expected project life?

Design Life

Economic Life (Depreciated Life)

Useful Life

What is project status within the O&M phase?

Active – Project operating fully or partially as authorized

Section 216 Reports

Major Rehab Reports (MRR) – may be 216

General Re-evaluation Reports (GRR)

Limited Re-evaluation Reports (LRR)

Divestiture – special type of 216

Inactive:

Standby (short term, expect to reactivate)

Mothball (long term, expect to reactivate)

Caretaker (do not expect to reactivate, prep for divestiture)

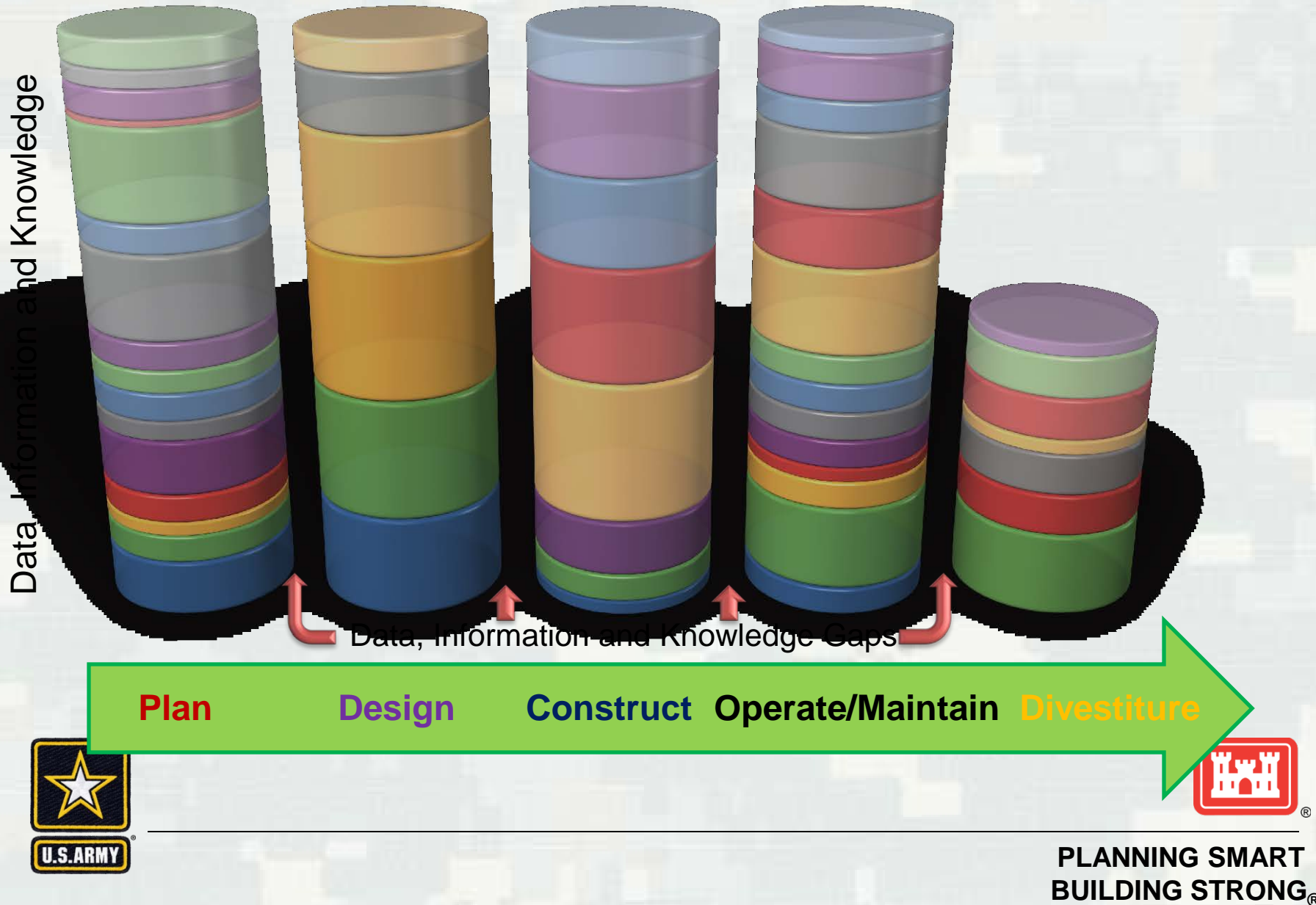
Need for improved integration, information flow

Plenty of opportunities for Planners

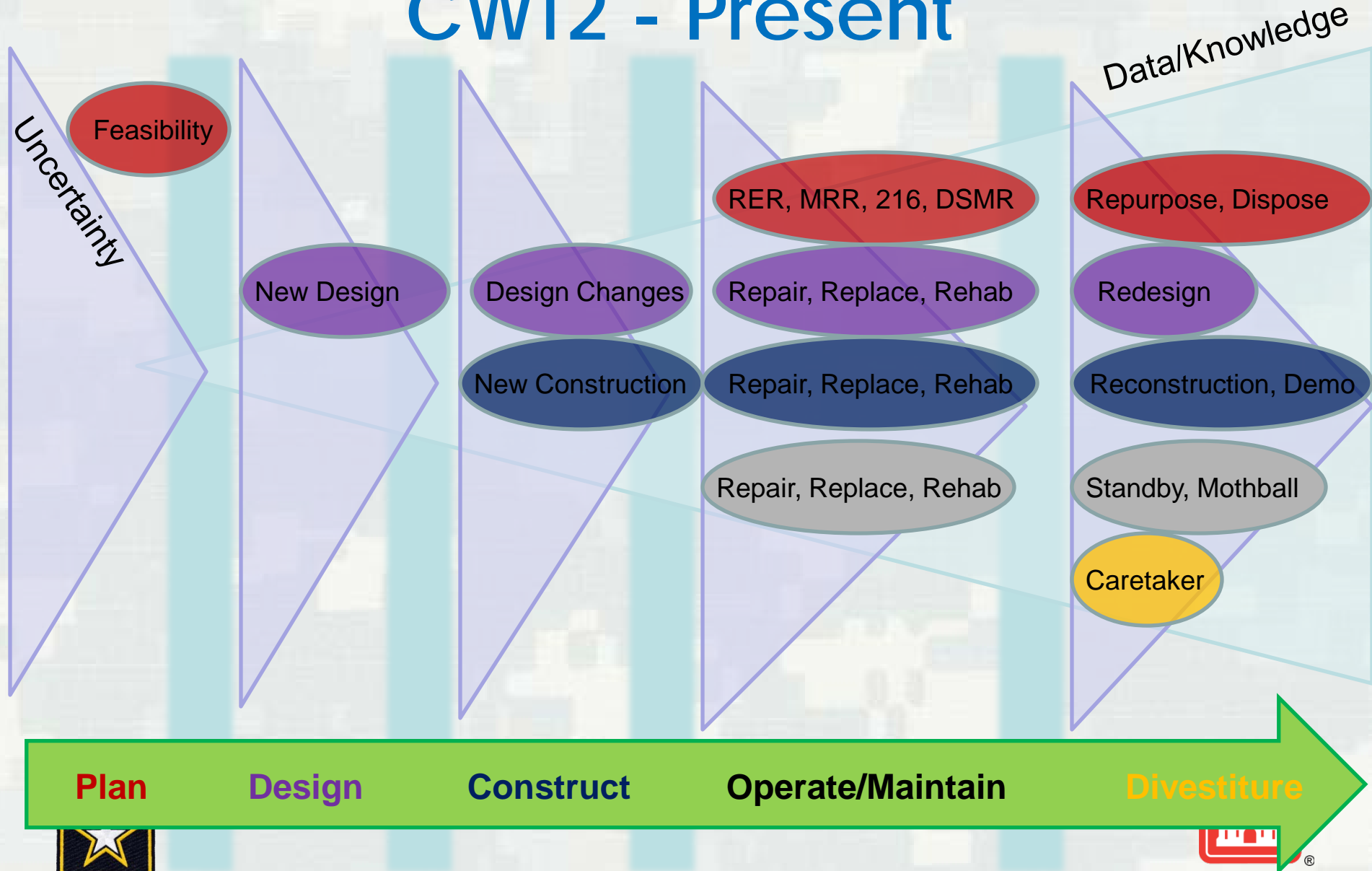


**PLANNING SMART
BUILDING STRONG®**

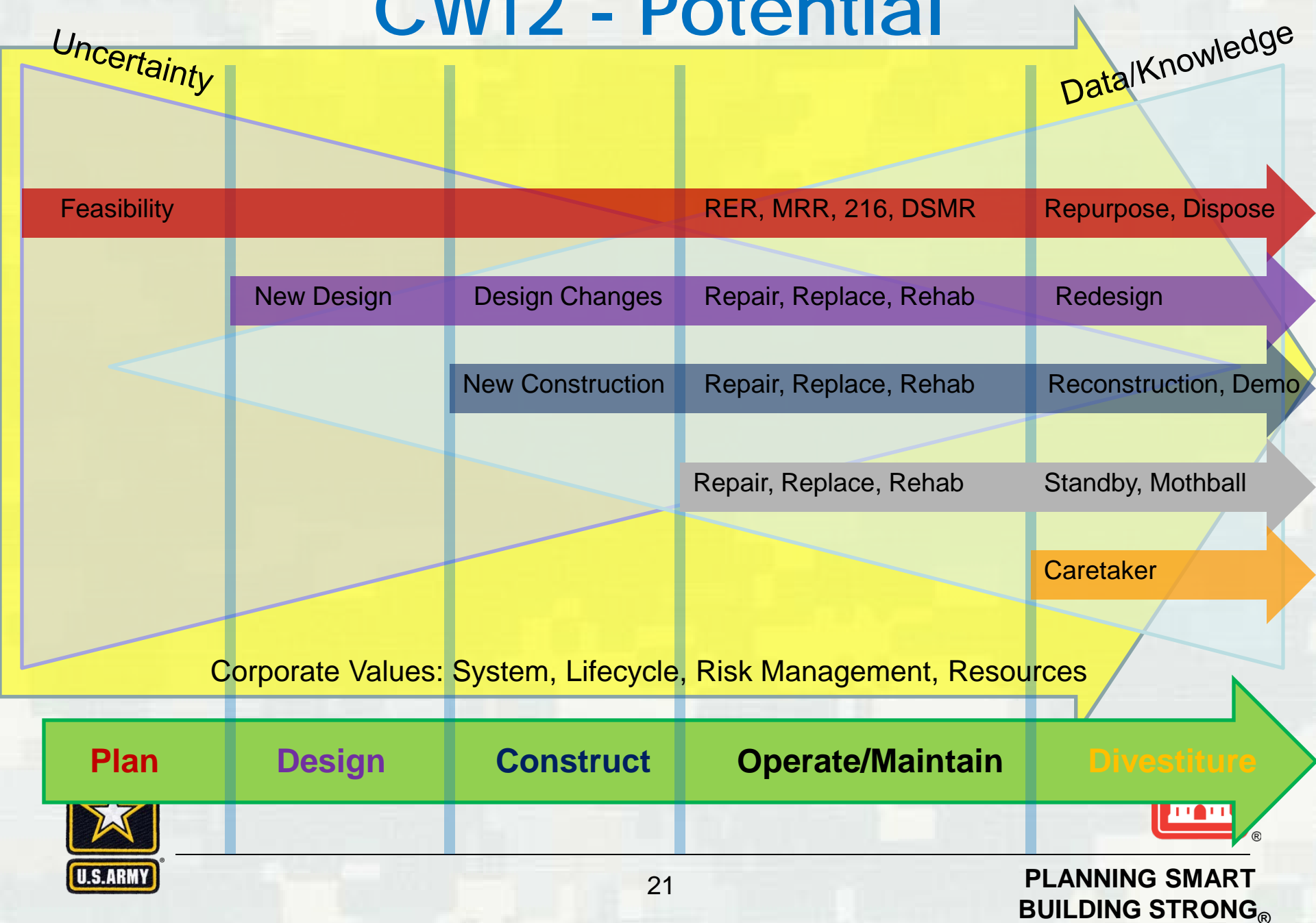
What Data, Information and Knowledge SHOULD *Persist* Throughout Life-Cycle, *including feedback*??



CWT2 - Present



CWT2 - Potential



QUESTIONS???



**PLANNING SMART
BUILDING STRONG®**

BACKUP SLIDES



**PLANNING SMART
BUILDING STRONG®**

FPMS Guidelines

- Cost-Sharing

- ▶ 100% Federal

- State, regional and local governments
 - Non-Federal agencies
 - Indian tribes

- ▶ Voluntarily contributed funds expand scope

- ▶ Fees/Cost Recovery Required:

- From Federal Agencies and 'private persons'
 - ▷ Individuals, private institutions, sole proprietors, partnerships, corporations...

- ▶ Technical and Quick Response

- On-hand data, Publications, explanations/advice on Flood Plain Management , Non-Structural Information

- ▶ Special Studies



FPMS Types of Special Studies

- Flood Plain Delineation/Flood Hazard Evaluation Studies
- Dam Break Analysis Studies
- Hurricane Evacuation Studies
- Flood Warning/Preparedness Studies
- Regulatory Floodway Studies
- Comprehensive Flood Plain Management Studies
- Flood Risk Management Studies
- Urbanization Impact Studies
- Stormwater Management Studies
- Flood Proofing Studies
- Inventory of Flood Prone Structures
- Evaluation of Levees for Potential FEMA Certification



FPMS Limitations

- Services do not involve:
 - ▶ Extensive and detailed mapping
 - ▶ Large area, long reach and floodway studies
 - ▶ Implementation of a plan
 - ▶ Duplication of efforts
 - ▶ Detailed planning and design
 - ▶ Detailed economic analysis



**PLANNING SMART
BUILDING STRONG®**

Guidelines

- Cost-sharing
 - ▶ Traditional: 50 Federal /50 non-Federal
 - In-kind services can be used to meet 100% of non-Federal contribution.
 - ▶ Exception: WRDA 2007, Section 2013 provided authority for 100% Federal funded PAS studies for:
 - hydrologic,
 - economic,
 - and environmental data and analyses



Types of Studies

- Flood Risk Management
- Flood Plain Management
- Coastal Zone Management/Protection
- Dam Safety/Failure
- Environmental Conservation/Restoration
- Harbor/Port
- Hydrology and Hydraulics
- Water Supply/Demand
- General Water Resources Management
- Water Quality
- Wetlands Evaluation



Eau Galle River nutrient study for water quality



**PLANNING SMART
BUILDING STRONG®**

Customers: Typical Partners

- State Agencies
- Local Governments
- Federally-Recognized Indian Tribes
- Local/Regional Entities
- State-Funded Universities



Redwood Creek flow capacity study



**PLANNING SMART
BUILDING STRONG®**

Continuing Authorities Program (CAP)

“The Purpose of CAP is to plan and implement projects of limited size, cost, scope and complexity.” (ER 1105-2-100, Appendix F)

- Small project or project area
- Obvious & Understood problem
- Simple solutions



AUTHORITY

PROJECT PURPOSE

Section 14	Emergency stream bank and shoreline protection for public facilities, such as roads, bridges, hospitals, schools, and water & sewage treatment plants, that are in imminent danger of failing.
Section 103	Protection of public and private properties and facilities against damages caused by storm driven waves and currents by the construction of revetments, groins, and jetties, and may also include periodic sand replenishment.
Section 107	Improvements to navigation including dredging of channels and widening of turning basins.
Section 111	Prevention or mitigation of erosion damages to public or privately owned shores along the coastline when the damages are a result of a Federal navigation project.
Section 204	Regional Sediment Management and beneficial uses of dredged material from new or existing Federal projects for ecosystem restoration, FRM or HSDR purpose.
Section 205	Local protection from flooding by non-structural alternatives (e.g. flood warning systems) or by construction of structural flood damage reduction features such as levees, channels, and dams.
Section 206	Aquatic ecosystem restoration.
Section 208	Local protection from flooding by channel clearing and excavation, with limited embankment construction by use of materials from the clearing operation only.
Section 1135	Modifications of USACE constructed water resources projects to improve the quality of the environment. Also, restoration projects at locations where an existing Corps project contributed to the degradation.

CAP Process

- Receive a letter requesting the Corps to partner on a CAP project
- Use Coordination Funds to:
 - ▶ Respond to Request
 - ▶ Meet with Potential Sponsor at the site
 - ▶ Determine Eligibility
 - Have Federal Interest and fit one of the 9 authorities
 - Must be complete in and of itself
 - Must have a cost share sponsor



CAP Process

► Feasibility Phase

- 100K Federally funded
 - ▷ Federal Interest Determination
 - ▷ Complete study or negotiate FCSA
- 50/50 Cost Share

► Design and Implementation Phase (DI)

- 100K to negotiate PPA (cost is recaptured)
- Cost shared per the authorization

