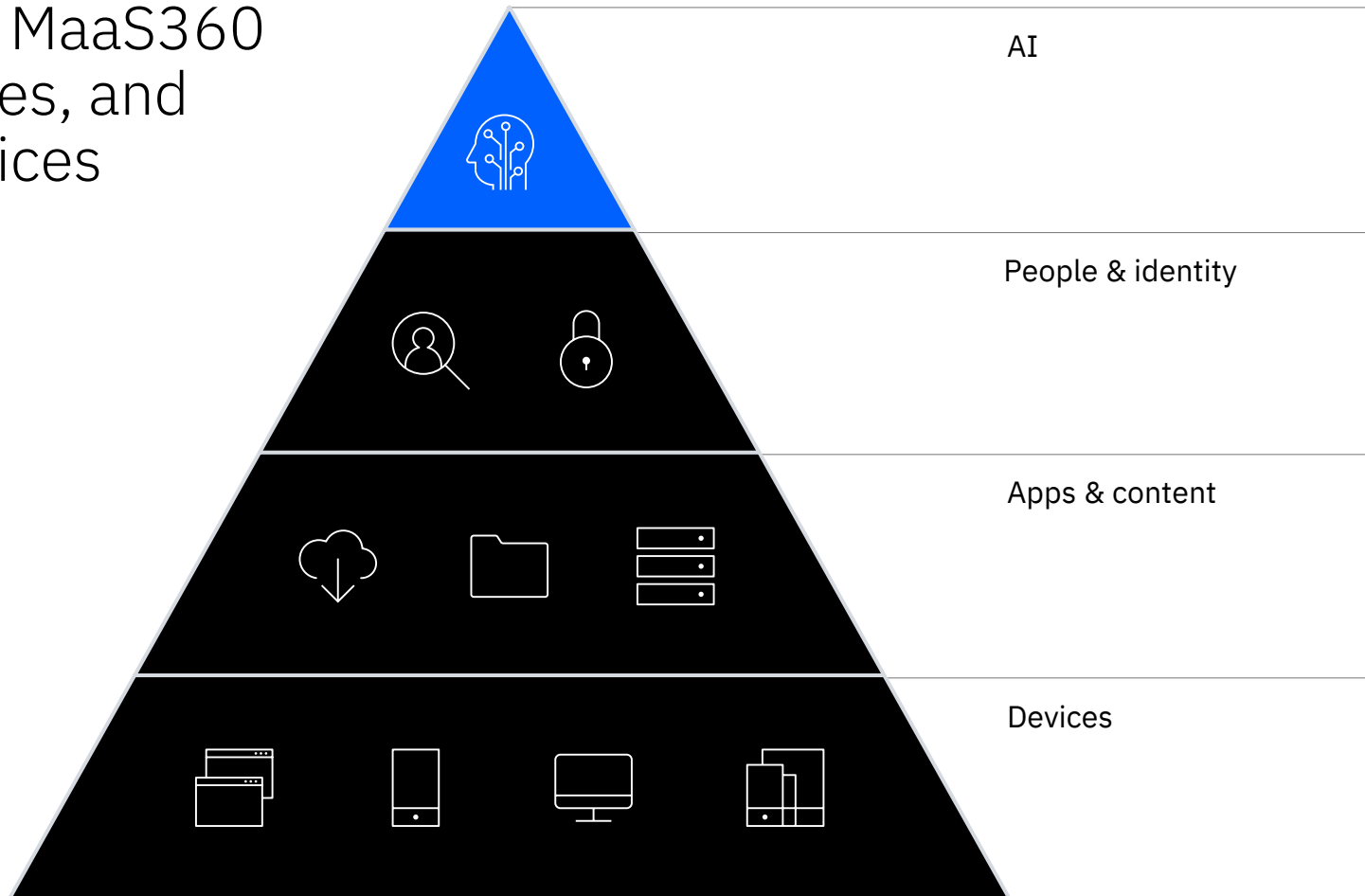


# Unified Endpoint Management

## IBM Security MaaS360® with Watson

Edition and Feature Details

With Watson, MaaS360 unifies, secures, and manages devices and users



# Unified endpoint management designed for you

IBM Security MaaS360® with Watson

Visit our  
[Documentation hub](#)  
[for MaaS360 Billed](#)  
[Services detail](#)

Solution	Essentials - \$4 \$8 per user	Deluxe - \$5 \$10 per user	Premier - \$6.25 \$12.50 per user	Enterprise - \$9 \$18 per user
Device Management	✓	✓	✓	✓
App Management*	✓	✓	✓	✓
Identity Management*	✓	✓	✓	✓
Advisor*	✓	✓	✓	✓
Policy Recommendation Engine*	✓	✓	✓	✓
User Risk Management	✓	✓	✓	✓
Granular Patch Management	✓	✓	✓	✓
Mobile Expense Management	✓	✓	✓	✓
Secure Mobile Mail		✓	✓	✓
Assistant*		✓	✓	✓
Business Dashboards for Apps*			✓	✓
OS VPN			✓	✓
Secure Browser			✓	✓
Gateway for Browser			✓	✓
Content Management			✓	✓
Gateway for Documents			✓	✓
App Security			✓	✓
Gateway for Apps			✓	✓
Mobile Document Editor				✓
Mobile Document Sync				✓
Mobile Threat Management				✓
TeamViewer Remote Support	○	○	○	○
Wandera Mobile Security Suite	○	○	○	○

# Unified endpoint management designed for you

IBM Security MaaS360® with Watson

Solution	Description
Device Management	Gain visibility & control over iOS, Android, Windows, macOS & Chrome OS devices
App Management	Distribute, manage & protect applications across mobile devices
Identity Management	SSO, MFA and Conditional Access for Web and Native Mobile apps
Advisor	Attain insights & alerts to discover vulnerabilities, boost productivity & improve IT efficiency
Policy Recommendation Engine	Cognitive recommendations for policies based on peer, regional, and industry data
User Risk Management	<b>Monitor</b> user behavior on devices to identify risk and take actions based on user's risk score
Granular Patch Management	Discover and distribute individual or groups of patches for enrolled Windows devices
Mobile Expense Management	Prevent costly overages by monitoring & enforcing mobile data usage
Secure Mobile Mail	Contain & encrypt corporate email, contacts & calendar
Assistant	An AI sidekick that boosts employee productivity & delivers end-user support in real-time
Business Dashboards for Apps	Understand which apps need attention and prioritization via app intelligence and reporting
OS VPN	Preserve the native VPN experience for iOS & Android users
Secure Browser	Safeguard data, boost productivity & control access to websites
Gateway for Browser	Access corporate intranet, websites & web apps without initiating a VPN session
Content Management	Grant secure access to work documents in an encrypted container
Gateway for Documents	Enable security-rich mobile access to corporate file repositories
App Security	Protect access to private, enterprise apps & prevent data loss
Gateway for Apps	Enhance enterprise apps with seamless access to internal corporate data
Mobile Document Editor	Empower users to securely create, edit & save mobile content
Mobile Document Sync	Allow users to synchronize documents across managed mobile devices
Mobile Threat Management	Remediate risks from mobile malware & compromised devices
TeamViewer Remote Support	Obtain real-world remote device views & perform remote control functions in seconds
Wandera Mobile Security Suite	Deliver real-time mobile threat detection, malware prevention & data exfiltration avoidance

A great first step for unified endpoint management



## Device management

- Manage smartphones, tablets and laptops featuring iOS, Android, Chrome OS, Windows 10 and macOS
- Gain complete visibility of devices, security and network
- Enforce compliance with real-time and automated actions



## Identity management

- Single sign-on and touch access
- Conditional access to trusted devices
- Identity federation with apps
- Multi-factor and passwordless authentication with support for FIDO, Push, Biometric, SMS, Email



## App management

- Deploy custom enterprise app catalogs
- Blacklist, whitelist and require apps
- Administer app volume purchase programs

A great first step for unified endpoint management

## Advisor



- Boost user productivity by identifying policy and app deployment enhancements
- Discover security vulnerabilities and emerging threats to endpoints, apps and data
- Improve IT operational efficiency by applying best practices and learning from industry and peer benchmarks

## User Risk Management



- Monitor risky behavior and define a risk score based on patterns
- Holistic view of organizational risk by evaluating users across all devices
- Take actions based on the risk level of the user

## Policy recommendation engine



- Improves ease of administration while instilling confidence in applying endpoint security policies
- Cognitive policy templates based on peer, regional and industry data
- Recommendations provided during policy configuration and publishing

## Mobile expense management



- Monitor mobile data usage with real-time alerts
- Set policies to restrict or limit data and voice roaming
- Review integrated reporting and analytics

# Deluxe edition

Add secure mail and AI assistance

*Includes all solutions from Essentials edition*



## Secure mobile mail

- Contain emails and attachments to prevent data leakage
- Enforce authentication, copy/paste and forwarding restrictions
- FIPS 140-2 compliant, AES-256 bit encryption for data at rest



## Assistant

- AI chatbot and voice assistant for mobile employees
- Leverages Natural Language Processing (NLP)
- Preserves employee privacy and data security

# Premier edition

Add critical productivity and security solutions

*Includes all solutions from Deluxe edition*



## Business dashboards for apps

- App intelligence and reporting to understand which apps need attention and prioritization

## OS VPN



- Preserves the native VPN experience for iOS and Android users
- Leverages the hosted MaaS360 Certificate Authority to issue authentication certs
- Deployed alongside your corporate VPN solution



## Secure browser

- A feature-rich web browser for secure access to intranet sites
- Define URL filters and security policies based on categories
- Block known malicious websites



## Gateway for browser

- Enable MaaS360 Secure Mobile Browser to access enterprise intranet sites, web apps and network resources
- Access seamlessly and securely without needing a VPN session on mobile device



# Premier edition (continued)

Add critical productivity and security solutions

## Content management



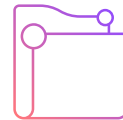
- Grant secure access to work documents in an encrypted container
- Security distribute content using a worldwide Content Delivery Network (CDN)

## App security



- Contain enterprise apps with a simple app wrapper or SDK
- Enforce authentication and copy/paste restrictions
- Prevent access from compromised devices

## Gateway for documents



- Secure access to internal files: e.g., SharePoint and Windows File Share
- Retrieve enterprise documents without a VPN session

## Gateway for apps



- Add per app VPN to Application Security to integrate behind-the-firewall data in private apps
- Incorporate enterprise data without a device VPN session

# Enterprise edition

The ultimate package for protection and productivity

*Includes all solutions from Premier edition*



## Mobile document editor

- Create, edit and save content in a secure, encrypted container
- Collaborate on Word, Excel, PowerPoint and text files
- Change fonts and insert images, tables, shapes, links and more



## Mobile document sync

- Synchronize user content across managed devices
- Restrict copy/paste and opening in unmanaged apps
- Store content securely, both in the cloud and on devices

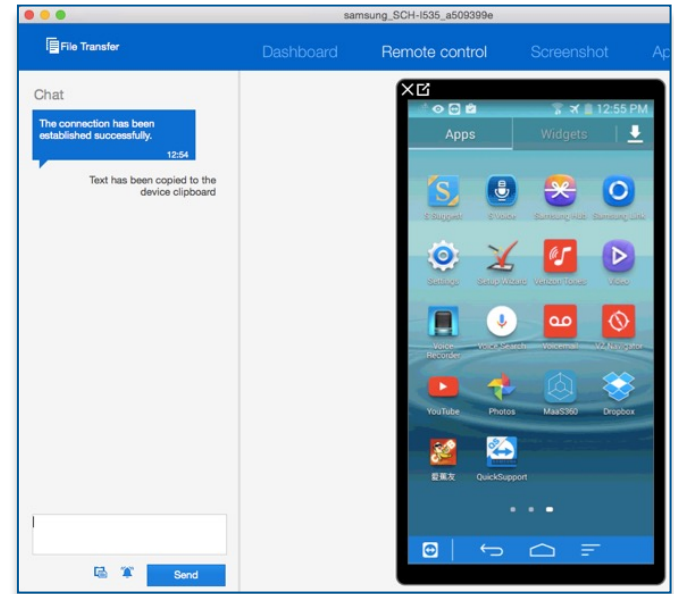
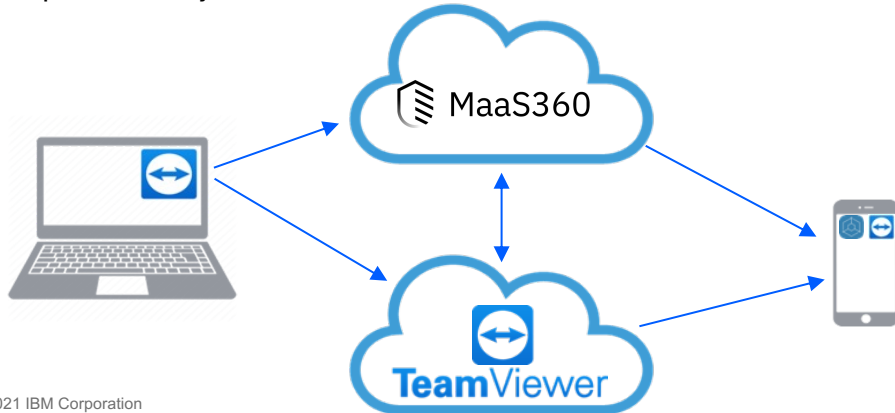


## Mobile threat management

- Detect and analyze mobile malware on compromised devices
- Automate remediation via near real-time compliance engine
- Take action on jailbroken/rooted devices over-the-air

# TeamViewer Remote Support for IBM Security MaaS360 with Watson

- Obtain real-world remote device views and perform remote control functions
- Provide rapid IT support for iOS, Android, macOS and Windows devices
- Remotely configure devices, provision, and remediate connectivity issues
- Reduce the volume of IT help desk calls and emailed requests for device support
- Increase productivity for IT administrators and end users



# Wandera for MaaS360: Resell SKUs



Wandera Pricing	Mobile Threat Defense	Data Policy	Mobile Security Suite
\$/device   \$/user	\$5   \$10	\$5   \$10	\$7.5   \$15
MaaS360 Integration	✓	✓	✓
On-Device App	✓	✓	✓
In-Network Policy	Via DNS	4G only	4G + WiFi
Security	✓	X	✓

## **MOBILE THREAT DEFENSE:** Protect the Mobile Endpoint

- Security capabilities on-device & in-network
- Award-winning\* zero-day phishing protection & app intelligence
- Support for any mobile device, managed or unmanaged

## **DATA POLICY:** Manage Data Connections and Internet Usage

- Data visibility and policy, primarily for corporate devices
- Broad use case support: Cost controls, Content filtering, Shadow IT
- Flexible controls to apply policy by user, group or organization

# Included with your MaaS360 purchase

## Support, upgrades, and resources

### **Customer Success Hub**

Connect with the MaaS360 team and access key resources, education and training, and documentation

### **24/7/365 support**

Post-sales technical support via chat, or phone, offering an industry-leading customer experience

### **Automatic upgrades**

Continuously updated daily with new capabilities and same day OS support for the latest platforms

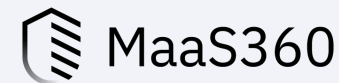
[Security Learning Academy](#)

[Customer Success Hub](#)

[User Community Knowledge Center](#)

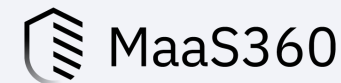
[Request for Enhancement](#)

# Mobility Success Services Offerings



Name	Description	Price	Period of Performance
<b>IBM MaaS360 Customer Set Up</b>	Up to 2 hours for activities related to IBM MaaS360 product optimization and deployment. Targeted for small deployments that need some help with setting up the portal. Mandated for all client deals under 100 seats (and for Verizon deals < 50 seats). Cannot be bundled.	<b>\$500</b>	1 year from time of purchase
<b>IBM MaaS360 Standard Email Access Gateway Setup</b>	Provides remotely delivered expertise and guidance in setting up and configuring the MaaS360 Email Access Gateway. The IBM consultant will participate in discussions and setup remotely via WebEx. Through the initial conversation, the consultant will recommend the appropriate scenario to leverage, and also provide recommendations for redundancy and load balancing as needed. The consultant will assist in deploying any of the following scenarios: (1) Email gateway for any access, (2) Email gateway to allow only MaaS360 Secure Mail clients, (3) Email gateway with client authentication using corporate credentials.	<b>\$730</b>	1 year from time of purchase
<b>IBM MaaS360 Cloud Extender and Mobile Enterprise Gateway Setup</b>	Provides remotely delivered expertise and guidance in setting up and configuring any combination of the Cloud Extender and Mobile Enterprise Gateway. The IBM consultant will discuss the needs and propose the setup that will meet both the requirements and scale of the environment. The consultant will then schedule remote sessions to walk through the setup of the Cloud Extender(s) and/or Mobile Enterprise Gateway(s).	<b>\$730</b>	1 year from time of purchase
<b>IBM MaaS360 VPN Setup</b>	Provides remotely delivered expertise and guidance in setting up and configuring the MaaS360 VPN. An IBM consultant will discuss the needs and propose a setup that will meet the requirements and scale of the environment. The consultant will then schedule remote sessions to walk through the setup of the VPN and validating the solution.	<b>\$730</b>	90 days from time of purchase
<b>IBM MaaS360 Simple Training</b>	Provides a remotely delivered 1 hour training session. An IBM consultant will schedule a 1-hour WebEx meeting in which they will walk through various aspects of the MaaS360 portal and answer questions that arise. The consultant will explain how to operate the portal and manage devices during the session.	<b>\$365</b>	90 days from time of purchase

# Mobility Success Services Offerings



Name	Description	Price	Period of Performance
<b>Health Check</b>	Provides an assessment of the deployment against use cases, future goals and industry best practices in a half-day session. Client will receive a report with a score and recommendations. Remote Delivery.	<b>\$2,800</b>	1 year from time of purchase
<b>Mobility Training</b>	Provides up to 16 hours of curriculum-based workshops to skill up helpdesk, operations team, and administrators on enterprise mobility and MaaS360. Hands-on with the product and demos. Remote Delivery.	<b>\$5,700</b>	1 year from time of purchase
<b>Quick Start</b>	Provides enterprise mobility implementation guidance to maximize client investment in less than a week. Ideal for motivated clients under 2,000 devices. Remote Delivery.	<b>\$14,000</b>	1 year from time of purchase
<b>Consultant On Demand 20</b>	Up to 20 hours with a MaaS360 consultant for anything related to MaaS360. Client will pair with a knowledgeable, experienced MaaS360 subject matter expert to achieve top objectives. Remote Delivery.	<b>\$7,200</b>	90 days from time of purchase
<b>Consultant On Demand 10</b>	Up to 10 hours with a MaaS360 consultant for anything related to MaaS360. Client will pair with a knowledgeable, experienced MaaS360 subject matter expert to achieve top objectives. Remote Delivery.	<b>\$4,000</b>	90 days from time of purchase

Note: Pre-packaged offerings are provided remotely. Custom offering packages with on-site options are also available.

# Thank you

Follow us on:

[ibm.com/security](https://ibm.com/security)

[securityintelligence.com](https://securityintelligence.com)

[ibm.com/security/community](https://ibm.com/security/community)

[xforce.ibmcloud.com](https://xforce.ibmcloud.com)

[@ibmsecurity](https://@ibmsecurity)

[youtube.com/ibmsecurity](https://youtube.com/ibmsecurity)

© Copyright IBM Corporation 2021. All rights reserved. The information contained in these materials is provided for informational purposes only, and is provided AS IS without warranty, of any kind, express or implied. Any statement of direction represents IBM's current intent, is subject to change or withdrawal, and represent only goals and objectives. IBM, the IBM logo, and other IBM products and services are trademarks of the International Business Machines Corporation, in the United States, other countries or both. Other company, product, or service names may be trademarks or service marks of others.

Statement of Good Security Practices: IT system security involves protecting systems and information through prevention, detection and response to improper access from within and outside your enterprise. Improper access can result in information being altered, destroyed, misappropriated or misused or can result in damage to or misuse of your systems, including for use in attacks on others. No IT system or product should be considered completely secure and no single product, service or security measure can be completely effective in preventing improper use or access. IBM systems, products and services are designed to be part of a lawful, comprehensive security approach, which will necessarily involve additional operational procedures, and may require other systems, products or services to be most effective. IBM does not warrant that any systems, products or services are immune from, or will make your enterprise immune from, the malicious or illegal conduct of any party.



The image features the IBM logo, which consists of the letters 'IBM' in a bold, sans-serif font. Each letter is formed by eight horizontal white stripes of equal thickness, set against a dark blue background that has a subtle gradient from top to bottom.