



Unit Options & Accessories Catalog





Table of Contents

Trailer	2	Wintrac™ 5 Software.....	14
SB-130.....	3	i-Box	14
SB-230.....	3	Accessories	15
SB-330.....	4	EON Battery	16
SB-400	4	ReliaMax Batteries.....	16
SPECTRUM™	5	EON Power Pack	17
SB-30 Series - Key Options	5	External Battery Charging Kit.....	17
Auxiliary Power Units (APUs).....	6	PrimAir™ Insulated Bulkheads	17
TriPac™ Option Ordering Guide.....	7	PrimAir™ Chutes	18
TriPac ^e ™ Option Ordering Guide	8	PrimAir™ Bulkheads	18
Truck.....	9	Remote Status Lights and Combo Displays.....	19
Application Chart.....	10	Fuel Tanks.....	19
Scroll Compressor Units.....	10	Door Switches	20
Reciprocating Compressor Units.....	11	Protective Guards.....	20
T-Series - Key Options.....	11	Espar Heaters	21
Telematics	12	E-Series Cargo Heaters	21
TrackKing.....	13		
DAS (Data Acquisition System).....	14		



Welcome to the new
SB-30 Series
with the new SR-3 control system

The new SB-30 Series of trailer units from Thermo King was developed with one thought in mind: making your business run more efficiently. Using the latest technologies, the SB-30 Series increases uptime, cuts maintenance costs and makes unit operation easier than ever.

SB-130



Features

- SR-3 Controller with USB
- OptiSet™ Plus with available FreshSet™ programmable modes
- Continuous run/CYCLE-SENTRY
- Automatic defrost initiation
- Programmable defrost timer
- CargoWatch™ data meets HACCP and NIST standards
- Fuel management system with pre-filter and EMI-3000

Evaporator Degrees F	Return air Degrees C	Engine Power Btu/hr	Engine Power w/ETV* Btu/hr
35°F	1.7°C	43,500	53,000
0°F	-17.8°C	30,000	30,000
-20°F	-28.9°C	18,000	18,000

*Optional

SB-230



Features

- SR-3 Controller with USB
- OptiSet™ Plus with available FreshSet™ programmable modes
- Continuous run/CYCLE-SENTRY
- Automatic defrost initiation
- Programmable defrost timer
- CargoWatch™ data meets HACCP and NIST standards
- Fuel management system with pre-filter and EMI-3000

Evaporator Degrees F	Return air Degrees C	Engine Power Btu/hr	Engine Power w/ETV* Btu/hr	Electric Power Btu/hr
35°F	1.7°C	51,000	60,000	30,000
0°F	-17.8°C	32,000	32,000	22,000
-20°F	-28.9°C	21,000	21,000	15,000

*Optional

SB-330



Features

- SR-3 Controller with USB
- OptiSet™ Plus with available FreshSet™ programmable modes
- Continuous run/CYCLE-SENTRY
- Automatic defrost initiation
- Programmable defrost timer
- CargoWatch™ data meets HACCP and NIST standards
- Fuel management system with pre-filter and EMI-3000

Evaporator Degrees F	Return air Degrees C	Engine Power Btu/hr
35°F	1.7°C	64,000
0°F	-17.8°C	37,000
-20°F	-28.9°C	25,000

SB-400



Features

- Smart Reefer MP-VI Controller
- OptiSet™ programmable temperature modes
- Continuous run/CYCLE-SENTRY
- Automatic defrost initiation
- Programmable defrost timer

Evaporator Degrees F	Return air Degrees C	Engine Power Btu/hr
35°F	1.7°C	60,000
0°F	-17.8°C	40,000
-20°F	-28.9°C	30,000

(System net cooling capacity at 100°F (38°C) ambient and high-speed engine operation for all units)

SPECTRUM™ Multi-Temp Systems



Features

- SR-2 Controller
- Continuous run/CYCLE-SENTRY
- Automatic defrost initiation
- Programmable defrost timer

SPECTRUM SB

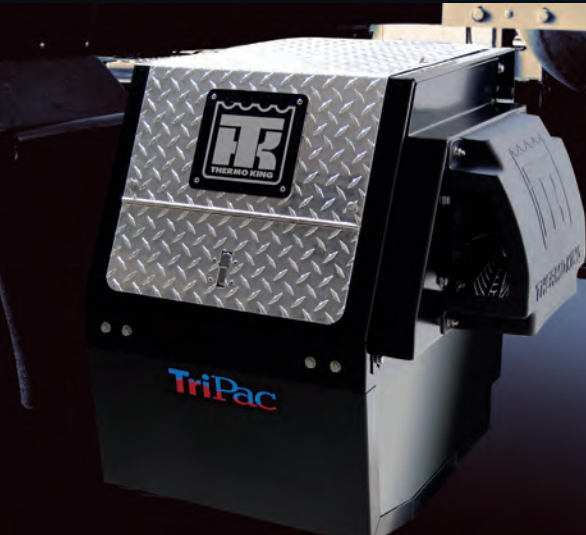
Evaporator Degrees F	Return air Degrees C	Engine Power Btu/hr
35°F	1.7°C	51,000
0°F	-17.8°C	31,000
-20°F	-28.9°C	20,000

SPECTRUM DE

Evaporator Degrees F	Return air Degrees C	Engine Power Btu/hr
35°F	1.7°C	45,000
0°F	-17.8°C	29,000
-20°F	-28.9°C	17,200

SB-30 Series - Key Options

- SmartPower™ Electric Standby**
SmartPower electric standby allows the unit to operate on electric power in addition to being powered by the standard diesel engine. Saves fuel, saves money and eliminate emissions.
- ETV [Electronic Throttling Valve]**
ETV gets your truck to the right temperature faster, saving money and fuel while reducing engine run hours. Additional benefits include maximizing high ambient temperature operating performance, which is especially important with critical loads in hot summer weather.
- Whisper™ Sound Kit**
Whisper Low Noise Technology improves driver comfort by cutting noise levels significantly.
- High Output Alternator**
65-amp alternator provides additional battery charging to run accessories.
- Frost Plug Heater**
Ensures cold-weather starting by preheating engine.
- Appearance Package**
Enhance the appearance of any rig with our chrome grills.
- DAS [Data Acquisition System]**
Provides independent documentation of cargo temperatures during transport.
- Remote Status Displays**
Monitor reefer status, fuel level and temperature from the driver's seat with one of several displays.
- TracKing Telematics**
Provides fleet managers critical information by trip, driver and vehicle, allowing them to monitor and gauge productivity of their fleet.
- Electronic Door Switches**
Low-profile switches automatically stop and restart reefer when door is opened, resulting in less run time, less fuel used and lower maintenance costs.
- Synthetic Engine Oil**
Improves efficiency and helps cold weather starts.
- Ultrasonic Fuel Sensor**
Uses ultrasonic technology to give more accurate fuel level reading and avoid out-of-fuel shutdowns.
- Fuel Heater**
Prevents fuel gelling in cold weather conditions.



ENGINE OR ELECTRIC?

THE **CHOICE** IS YOURS WITH THERMO KING!



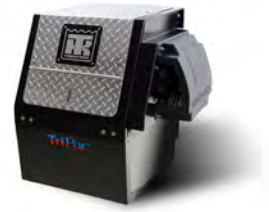
In the world of APU systems, Thermo King outpowers the competition. Whether you select the engine-based TriPac system or the electric TriPac^e system, you are assured that the quality and reliability of the industry leader in APU technology is built in, along with unmatched temperature management and comfort, superior power management for longer run time and the support of the nationwide Thermo King dealer service network. Engine or Electric, Thermo King is the easy choice.

The TriPac[™] APU System

The number one auxiliary power unit (APU) in the industry.

The TriPac^e[™] Electric APU System

Our electric system delivers best-in-class cooling and battery power management.



TriPac Specs

Btu Capacity Cooling	Btu Capacity Heating	Airflow
13,000	7,500	250 cfm

TriPac™ Option Ordering Guide

- 120 amp Alternator**
Provides quicker battery charging under heavy accessory loads. Ideal for supersized sleepers and drivers with heavy appliance usage during rest periods.
- Stand-By Truck Integration**
Provides seamless activation of the TriPac control system based on tractor engine off/on indication.
- Stand-By Truck Integration with Dash-Mounted Selector Switch**
Provides the driver the ability to place the TriPac in a non-start mode (used during tractor fueling, service situations or when exiting the tractor) from the driver's seat.
- Remote Hour Meter**
Provides separate fuel-fired heater and TriPac engine time tracking for accurate and effective preventive maintenance. Allows technician to access and record hours of operation without entering tractor cab.
- Inverter**
1,800 watt modified sine wave inverter with a 3,600 watt surge rating. Includes two GFI receptacles. Typically mounts under bunk.
- Closed Loop Cooling**
Lets TriPac run independently of tractor coolant and allows "limp home" capability in case of tractor alternator failure.
- High Output Heater**
With 13,600 BTUs of fuel-fired output, this heater will keep you warm on the coldest of nights. With only slightly higher fuel consumption than the standard heater, this option is popular with drivers operating in the northern United States and in Canada.
- High Altitude Compensation Kit**
Advanced electronics and a barometric sensor allow the fuel-fired heater to adjust fuel flow to changing altitudes. Recommended for drivers taking rest periods at or above 4000'. Adjustments are automatic and continue to take place to an altitude of approximately 10,000'.
- Diesel Particulate Filter (DPF) Options**
Certified CARB-compliant for operation in the state of California.

 - (Standard Mount)**
Mounts to rear of base TriPac system in place of muffler
 - (Remote Mount)**
- Arctic Package**
Monitors tractor engine coolant temperature and automatically starts the TriPac to heat the shared engine coolant. Reduces cold weather starting issues for the tractor even after extended periods of no operation in cold temperatures
- Extreme Arctic Package**
With the addition of a 800 watt coolant heater and a 300 watt oil heater powered by the TriPac, this package gets your tractor started in the coldest of environments with minimal wear and tear. 120 amp alternator included.
- Stainless Steel Skins**
The polished stainless steel skins dress up any rig, moving or standing still.
- Brushed Stainless Steel Condenser Cover**
Adds additional corrosion protection as well as that finishing touch.
- Flush Mount Kits**
Special mounting kit which keeps the top of the unit flush with the top of the tractor frame rail.

TriPac^e Specs

Btu Capacity Cooling	Airflow
7,200	270 cfm



TriPac^e™ Option Ordering Guide

- Inverter**
1,000 watt pure sine inverter. Long lasting and provides very clean power.
- Shore Power Converter**
115 Vac Power Converter provides an additional source of system power when plugged into external or "shore power."
- Inverter and Shore Power Converter**
- Heater**
7,500 BTU fuel-fired heater.
- High Output Heater**
With 13,600 BTUs of fuel-fired output, this heater will keep you warm on the coldest of nights. With only slightly higher fuel consumption than the standard heater, this option is popular with drivers operating in the northern United States and in Canada.
- High Altitude Compensation Kit**
Advanced electronics and a barometric sensor allow the fuel-fired heater to adjust fuel flow to changing altitudes. Recommended for drivers taking rest periods at or above 4000'. Adjustments are automatic and continue to take place to an altitude of approximately 10,000'.
- Brushed Stainless Steel Condenser Cover**
Adds additional corrosion protection as well as that finishing touch.
- NXT Batteries (4)**
Additional 4 batteries designed for TriPac application to replace tractor batteries.

WAKE UP FULL.



THE ELECTRIC APU FROM THERMO KING.

The TriPac^e™ doesn't just reduce the amount of diesel you burn while resting, it virtually eliminates it. Featuring Thermo King's Smart Charger Module technology to optimize battery performance, the TriPac^e delivers tighter temperature control, a longer run time and superior cooling capacity. And it's backed by the 200+ locations of the Thermo King dealer network. See your Thermo King dealer and learn more today!



Self-Powered Truck Units

The T-Series

The T-Series line of truck units from Thermo King is ready to deliver what you and your customers demand. Lower life cycle costs. Lower fuel consumption. Cleaner, quieter operation. Unmatched performance and reliability. Greater capacities at lower operating speeds. Precise temperature control. Ease of use and service. And, of course, the proven reliability Thermo King is famous for.

The T-Series: Delivering what matters.

Application Chart

Box Size	14	16	18	20	22	24	26	28
35°F	T-600R	T-600R	T-600R	T-600R T-600	T-600R T-600	T-600R T-600	T-600R T-600	T-800R T-800
0°F	T-600R T-600	T-600R T-600	T-600R T-600	T-600R T-600	T-800R T-800	T-1000R T-1000	T-1000R T-1000	T-1000R T-1000
-20°F	T-1000R T-800	T-1000R T-1000	T-1000R T-1000	T-1000R T-1000	T-1000R T-1000	T-1000	Contact your Thermo King Dealer	Contact your Thermo King Dealer

Assuming 3" of insulation for 35°F, 0°F and 4" for -20°F; ten door openings per day; box dimensions of 96"W and 72"H on trucks 10' and over in length. Unit selection may vary. Consult your Thermo King dealer for a detailed analysis of your requirements.

		Weight**		Capacity* (BTU/		Key Features
		1054 lbs.				
Scroll Compressor Units	T-600			35°F.....18,500 0°F.....12,000 -20°F..... 7,000 Heating (35°F)13,000		TSR-2 control system Recyclable Gelyo injected molded skins Poly-V stretch belt with quiet channel technology Tier 4 diesel engine Robotic welded steel frame with automotive grade 2 coat paint finish Liquid level fill alerts New generation TK04 & TK06 scroll compressors ACTiV (Ambient Compensating Throttle Valve) Whisper™ quiet operation
	T-800			35°F.....21,500 0°F.....14,500 -20°F.....9,000 Heating (35°F).....13,000		
	T-1000		1138 lbs.	35°F..... 27,500 0°F.....19,000 -20°F.....12,500 Heating (35°F)16,000		
	T-1000 SPECTRUM		TBD	35°F..... 29,500 0°F.....19,500 -20°F.....13,000 Heating (35°F)16,000		

Reciprocating Compressor Units		Weight**		Capacity* (BTU/hr)		Key Features
		T-600R		1032 lbs.	35°F..... 17,500 0°F.....10,500 -20°F..... 7,000 Heating (35°F)10,500	
T-800R		1032 lbs.	35°F.....20,000 0°F.....12,500 -20°F..... 7,800 Heating (35°F)10,500			
T-1000R		1178 lbs.	35°F.....24,000 0°F.....16,500 -20°F.....10,500 Heating (35°F) 14,000			

*Cooling capacities rated at 100°F ambient, heating at 0°F ambient. **Weights are for units with SmartPower option.

T-Series - Key Options

- SmartPower™ Electric Standby**
Plug in when stationary to save fuel, save money, and eliminate diesel emissions. Since all unit functions are maintained when running on electric power, this option is commonly used for extended cold storage, quiet pulldown in busy yards, and to reduce environmental impact.
- ETV [Electronic Throttling Valve]**
ETV gives you up to 50% faster pulldown, saving money and fuel while reducing engine run hours. Additional benefits include maximizing high ambient temperature operating performance, which is especially important with critical loads in hot summer weather.
- Whisper™ Plus Sound Kit with Top Screens**
Further noise reduction is achieved with the factory integrated Whisper Plus sound kit. Thermo King's low noise units get even quieter for operation in densely populated environments. Includes engine cover and top screens
- DAS [Data Acquisition System]**
Provides independent documentation of cargo temperatures during transport. See page 18 for more information.
- Handheld TSR-2 Diagnostic Tool**
Provides technicians access to built-in diagnostic modes and information from controller.
- TrackKing Telematics**
Provides fleet managers critical information by trip, driver and vehicle, allowing them to monitor and gauge productivity of their fleet. See Telematics section for more information.
- Top Cover System**
Protect your unit from damage due to road debris and tree branches with factory installed top covers designed to shield critical components with low weight and no added height beyond the unit profile.



Genuine Thermo King Telematics

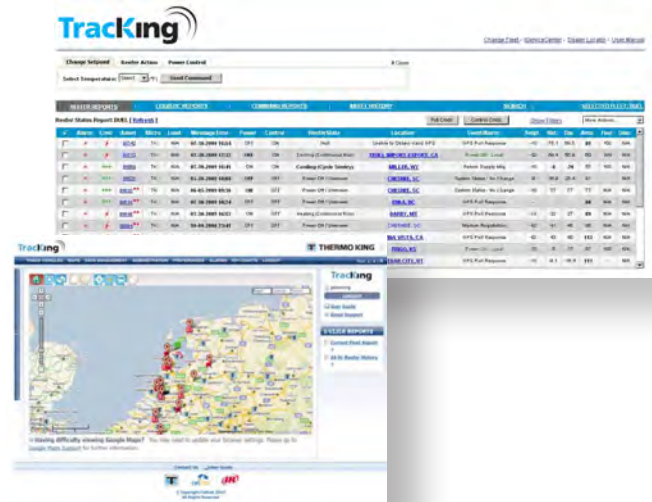
A comprehensive line of the latest technology solutions to make your business run smarter.

Thermo King telematics solutions are:

- Designed specifically to work with Thermo King units
- Engineered with cutting-edge technology
- The perfect way to save money and improve the productivity of fleets large and small
- The solution to increased asset optimization
- Designed for optimum cargo protection through temperature management

TrackKing

TrackKing, available in satellite or cellular, delivers operational efficiencies going beyond the cold chain to vehicle and driver management. This system provides fleet managers with a dashboard of cost critical information by trip, by driver and by vehicle, allowing them to quickly gauge the productivity of their fleets.



Temperature Management

- Optimum temperature management to ensure top quality product delivery
- Lower service costs and unit down-time with real time alarm notification
- Manage the refrigeration unit remotely with full 2-way control including power ON/OFF
- Help ensure cargo integrity
- Remote monitoring capabilities include:
 - Set point, return and discharge air monitoring
 - Datalogger sensors
 - Power status
 - Alarms
 - Fuel levels
 - Operating modes
 - Battery voltage
 - Electric and engine running hours
 - Door openings



Vehicle Tracking

- Accurate location of your fleet at all times on a map
- Increased cargo security through asset visibility
- Locate Thermo King dealers easily on a map for service support
- Monitor vehicle routes by replaying journey on a map (cellular only)
- Theft protection with battery backup (cellular only)



Real Time Alarm Management

- Alarms trigger e-mail and SMS alerts for the following alarms:
 - Unit shutdown alarms
 - Temperature out-of-range alarms
 - Door opening and low fuel level alarms
 - Reefer and TrackKing battery voltage alarms
 - Geo-fence location alarms

DAS (Data Acquisition System)

The industry's most powerful independent data recorder.



- Provides independent documentation of cargo temperatures during transport
- Developed and tested to comply with all European temperature recording requirements
- Memory and real-time clock independent of unit controller
- Up to six independent temperature sensors
- Data output to printer or PC
- Supported by user-friendly Thermo King Wintrac™ software
- Fully interactive with most Thermo King truck and trailer controllers

Wintrac™ 5 Software

A fast, easy-to-use Windows™ based reporting utility for Thermo King data loggers.



Quick, easy answers to performance questions.

- Fast performance analysis — easily define and search for critical data you need
- Innovative, easy-to-use graphical user interface
- Automatic, comprehensive management of files
- Fast, easy downloads
- Fast, flexible viewing of graph and table Reports
- Fast, convenient setting of trip headers
- Fast retrieval and setting of data logger set-up features
- Comprehensive trip file import/export capabilities
- Compatible with SR-3 control system and USB

i-Box

Universal translator for communications.



Enables data transfer for third party telematics providers.

- Enables third party remote communications, works with multiple communication technologies
- Jointly developed with transport industry leaders
- Robust construction, built to last
- Connects to any existing SMART REEFER®
- Compatible with SR-3 control system



Genuine Thermo King Accessories

Complete your performance package with the latest Genuine Thermo King accessories. Innovative and built to last, these quality accessories are designed to save you money by keeping on the road and saving fuel.

Genuine Thermo King accessories are:

- Designed specifically to work with Thermo King units
- Engineered for top performance and superior reliability
- The perfect way to save time, improve performance and enhance the appearance of your unit and truck

EON Battery

The battery with more power and a longer service life.



Dry Cell Technology

The EON battery uses Absorbed Glass Mat (AGM) technology to offer, in one box, the characteristics of two separate batteries. It can deep cycle as well as provide enormous cranking power in one durable package.

Superior Cranking and Fast Charge Capability

The 5-second cranking power of the EON is double to triple that of equally sized conventional batteries, even at extremely low temperatures.

- Threaded Post203-550
- Smooth Post203-551
- AGM Battery Charger 204-1923

ReliaMax Batteries

Maximum reliability for your operating conditions.



Reliable power

ReliaMax batteries provide reliable cranking power in even the harshest conditions. Because battery life is directly related to environmental temperature, it's essential to choose the correct battery for your operating conditions to maximize battery life. Lower cold cranking amp (CCA) batteries will outlast higher CCA batteries in the same operating conditions, so choose only the CCA necessary. Thermo King offers ReliaMax batteries in 750 CCA for warmer climates and 925 CCA for colder climates.

Part Number	Cold Cranking Amps	Reserve Capacity @25 AMPS (minutes)	Weight (lbs.)
925N Cold - Warm			
203-732 Post (203-736 Canada)	925	180	60
203-733 Stud (203-737 Canada)	925	180	60
750S Warm - Hot			
203-730 Post (203-734 Canada)	750	180	59
203-731 Stud (203-735 Canada)	750	180	59

EON Power Pack

Auxiliary lighting power supply.



Economical auxiliary power for operating lights

- Avoid dead truck batteries
- Powered by a long-lasting EON battery
- Easy to install
- Weatherproof enclosure

KIT INCLUDES:

- Low voltage disconnect to maximize battery life
- Weatherproof switch with integrated 45-minute timer
- Charging circuit to connect system to reefer or truck alternator

For Interior Lights	40-999
With Lift Gate Charging	40-1033

External Battery Charging Kit

Charges batteries while isolating the reefer.



Keep your lift gate or other accessories working all day!

- Reefer alternator charges lift gate or other battery
- Reefer battery is isolated from external current draw to ensure continuous starting power
- Disconnects during lift gate operation and retains power capacity for refrigeration needs
- Thick 4-gauge wire promotes rapid charging

Charging Kit.....	40-1036
30 ft. of cable.....	40-1012
60 ft. of cable	40-1013

PrimAir™ Insulated Bulkheads

Insulate Multi-temp Compartments.



Insulated Bulkheads

PrimAir™ insulated bulkheads are designed and constructed for exceptional durability at an extremely light weight. They are easy on loaders and easy on drivers.

Insulated Bulkhead	TK-PRIMAIR-IB
Nylon Web Strap.....	ESTRAPKIT-REF
Adjustable Vent	VENT

PrimAir™ Chutes

Help maintain temperature throughout trailer.

Chute Systems

PrimAir chutes are designed to provide uniform temperatures throughout the entire trailer to ensure optimum cargo protection. Fits all SB,SB+ and SB-30 series units.



PrimAir Chutes and Adapters

Part Number	Length		Material		Includes Rivets
	43 ft	38 ft	Vinyl	Polyethylene	
201-3030	X		X		
201-3031		X	X		
201-3037	X		X		X
201-3038		X	X		X
201-3034	X			X	
201-3035		X		X	
201-3040	X			X	X
201-3041		X		X	X
201-3023	10 inch offset adapter bracket for Thermo King SB and SB+ units				
201-3024	17 inch offset adapter bracket for Thermo King SB and SB+ units				
201-3042	Flex adapter kit for Thermo King and Carrier X-Series units*				
201-3039	Adapter bracket for Carrier X-Series units*				

* Carrier X-Series units include Ultra XT, Ultra XTC, and all Carrier units that use a single, centered air outlet. Will not work on Carrier units with dual-outputs.

PrimAir™ Bulkheads

Optimize temperature distribution.



Return Air Bulkheads

The PrimAir bulkhead's support pods have been uniquely designed and positioned so that return air actually mixes to deliver a more consistent temperature upon entering the evaporator coil. That results in a more efficient operating unit that delivers better cooling to the cargo and saves energy. Heavy duty bulkhead offers 40% thicker design for added durability.

- Standard White 98-6218
- Standard Black 98-6217
- Heavy Duty White.....98-8275
- Two-PieceTK-VORTEX

Remote Status Lights and Combo Displays

Monitor reefer status and fuel level from the driver's seat.



Status Only Display

Provides on-road visibility to basic functions, including check alarm codes and shutdown alarms.



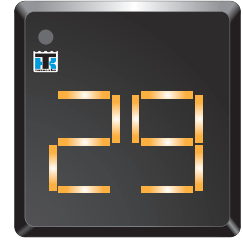
Fuel Combo Display

Offers all features of Status Only display, plus fuel level display and low fuel, check alarm and shutdown alarms.



Triple Combo Display

Offers all features of other displays plus temperature display in up to three different compartments.



Temp. Only Display

Displays temperature and can be set for direct or mirror viewing. Utilizes robust air temperature sensor and can be used with all controllers.

Display	Status & Alarms	Fuel Level	Temperature	Fuel Tank Gauge Kit	Part #
Status Only	✓				40-980
Status Only (Flush)	✓				40-981
Fuel Combo	✓	✓			40-1068
Fuel Combo	✓	✓		✓	40-1070
Triple Combo	✓	✓	✓		40-1110
Triple Combo	✓	✓	✓	✓	40-1109
Temp. Only (°F)			✓		40-1119
Temp. Only (°C)			✓		40-1120

All displays are corner-mount except where noted. 1-year parts warranty.

Fuel Tanks

Genuine Thermo King fuel tanks in a variety of sizes.



Lightweight and durable

Thermo King aluminum fuel tanks are designed to meet your fueling needs and are available in capacities from 30 to 110 gallons. Anti-siphon device available to prevent fuel theft.

TRAILER	Part #	Capacity (Gal)
	12-497	30
	12-650	50
	12-843	75
	12-644	90
	12-789	110
TRUCK	Part #	Capacity (Gal)
	12-927	30
ANTI-SIPHON DEVICE	Part #	
	11-9631	
ELECTRONIC FUEL GAUGE KIT	Part #	
	10-370	

Electronic Door Switches

Low-profile switches automatically stop and restart reefer when door is opened and closed.



Electronic Door Switches offer:

- Improved temperature control
- Low-profile design
- Durable, long-lasting weather/waterproof construction
- Electronic solid-state design
- Shut down of reefer in non-cooling situations — less run time means less fuel used and lower maintenance costs
- Completely retrofitability on all trailers and trucks or available as a factory option

2-Wire Switch	40-907
3-Wire Switch.....	40-906

Protective Guards

Protect your equipment from dents and scratches.



SB Door Guard

Protect your unit doors and controller with durable guards designed to take the impact from cables or branches. Guards easily mount directly to SB units without compromising the trailer swing radius or service access.

Part Number909-130



S-3 Evap Guards

Constructed of high-strength aluminum, these guards are designed to protect remote evaporators from damage during loading and unloading.

Part Number90-320



SB Intermodal Guard

Protect units from damage during intermodal shipment by truck and rail with this heavy-duty steel protection package.

Heavy Duty	909-131
Light Duty	909-135

Espar Heaters

The ultimate in idle reduction and driver comfort.



Espar Heaters

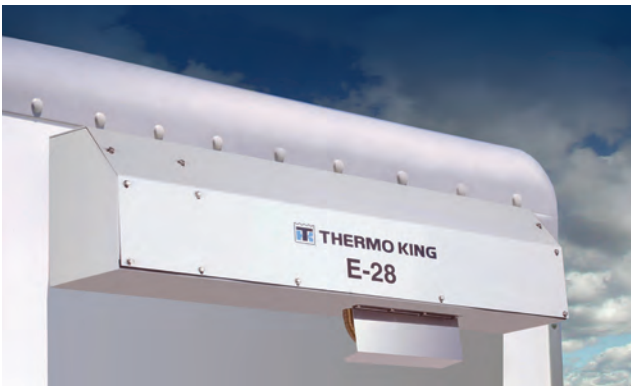
Espar heaters save money and fuel by eliminating the need to idle your truck in addition to enhancing driver comfort and increasing driver retention. Espar heaters also comply with anti-idling regulations and stricter emissions standards.

Thermo King offers the full line of Espar heaters and repair parts. Contact your Thermo King dealer for more information!

Bunk Heat Models	BTU's
Airtronic D2-D4.....	7,500-13,650
Engine Pre-Heat Models	
Hydronic 5-35.....	17,000-120,000
School Bus Heat Models	
E-Guardian 5-12.....	4,100-42,000

E-Series Cargo Heaters

Protect perishables from cold temperatures.



E-Series Heaters

E-Series cargo heaters protect valuable loads from low temperatures using high volume heat output and high airflow for even temperature distribution. E-Series heaters have DOT approval for use with many hazardous materials. Various sizes of heaters are available for all applications.

E-13 Heater.....	80-212
E-18 Heater	80-213
E-28 Heater	80-210



E-13



E-18



E-28

Enhanced Thermo Gard™ Platinum

Customizable for your business!



Thermo King SVC's enhanced Thermo Gard Platinum guaranteed maintenance program includes four different levels of service and protection tailored to fit customers' needs, plus the ability to create a customized program tailored to the needs of your specific business.

Platinum Premier

- Allows customers to exchange the major component coverage of Platinum Premier for a lower cost coverage option
- Guaranteed time and materials rates for engine, compressor, and microprocessor repairs
- Service performed by factory-trained technicians at any of over 200 participating dealer locations in North America
- Major component coverage

Platinum Essential

- Includes all of the above without major component coverage and is ideal for businesses with major component extended warranties

Platinum PM+

- Includes preventive maintenance service at factory recommended intervals:
 - Comprehensive 60-point inspection
 - Oil change
 - Oil and fuel filter replacement
 - Air filter replacement
 - Annual interim inspection
- Coverage available at a fixed cost for terms of 3 to 7 years
- Service performed by factory-trained technicians at any of over 200 participating dealer locations in North America
- Same affordable rates regardless of equipment age

Platinum PM

- Includes all of the above except for:
 - Annual interim inspection
 - Air filter replacement



**Expert Service and Support
are as close as this sign.**

Enjoy the support of the
Thermo King Dealer Network.

**Over 200 factory-authorized
service centers nationwide!**





Ingersoll Rand's Climate Solutions sector delivers energy-efficient HVACR solutions for customers globally. Its world class brands include Hussmann, a manufacturer of refrigeration and food merchandising solutions, Thermo King, the leader in transport temperature control and Trane, a provider of energy efficient heating, ventilating and air conditioning systems, building and contracting services, parts support and advanced controls for commercial buildings and homes.

Distributed by: