

**UNITED STATES DEPARTMENT OF AGRICULTURE
FOREST SERVICE
OLYMPIC NATIONAL FOREST
OLYMPIA, WASHINGTON**

The Olympic National Forest may be applying the herbicides glyphosate, clopyralid, triclopyr, aminopyralid, sulfometuron methyl, or imazapyr to noxious weeds or other invasive plant species from April 25 – November 18, 2022. Limited injection or cut stump treatments may be conducted from November 19, 2022 – April 22, 2023. Please see the following spreadsheet and maps for a more detail about treatment areas. Each project is coded with a reference number on the map and corresponding spreadsheet to assist you in locating specific areas where treatments are proposed. Applications will be conducted as planned in the Final EIS-Olympic National Forest Site Specific Invasive Plant Treatment Project, which was finalized in 2008. Notices indicating that the formulation of the herbicide to be applied will be posted at entrances to the target road systems and/or individual sites. For questions about applications contact Nick Jarvis, Invasive Plant Program Coordinator for the Olympic National Forest at (360) 956-2319.

Ref #	2022 Priority	6th Field Watershed Name	Watershed County	Site Name	Road #	BMP	EMP
1016	2	Middle Hoh River	Jefferson	Morgans Crossing West	1402		
1017	2	Middle Hoh River	Jefferson	Morgans Crossing East	1402		
1018	2	Middle Hoh River	Jefferson	Pole Creek	1402		
1019	2	Middle Hoh River	Jefferson	Upper Hoh Road	1402		
1020	2	Middle Hoh River	Jefferson	Upper Linder Creek	1402		
1021	2	Middle Hoh River	Jefferson	Young Slough	1402		
1023	2	Middle Hoh River	Jefferson	Pole Creek wetland	1402		
661	2	Middle Sol Duc River	Clallam	Mary Clark Road	2036	0	4.3
660	1A	North Fork Calawah River	Clallam	Mary Clark Road	2036	4.3	4.9
169	1A	Upper Sol Duc River	Clallam	Cooper Ranch Road	2065	0	0.8
120	1A	Middle Sol Duc River	Clallam	Cooper Ranch Road	2065	0.8	2.1
135	1A	North Fork Calawah River	Clallam	Cooper Ranch Road	2065	2.1	4.4
987	1A	Cook Creek	Grays Harbor	Moclips Highway	2266	0	4.5
316	2	Salmon River	Jefferson		2100000	2.8	6
636	2	Matheny Creek	Jefferson		2100000	6	8.24
696	1A	Matheny Creek	Jefferson		2100037	0	0.7
317	1A	Salmon River	Jefferson		2140000	0	4.3
821	1A	Matheny Creek	Jefferson	Calvin quarry	2140000	3.4	3.4
822	1A	Matheny Creek	Jefferson	Hard Turn Pit	2140000	4	4
315	1A	Matheny Creek	Jefferson		2140000	4.9	12.2
823	2	Matheny Creek	Jefferson	Loki quarry	2140000	5.41	5.41
259	1A	Middle Quinault River	Jefferson		2140000	11.4	12.2
824	2	Salmon River	Jefferson	Salamander pit	2140000	11.45	11.45
773	1A	Salmon River	Jefferson		2140090	0	3.9
318	1A	Salmon River	Jefferson		2140120	0	0.8
727	1A	Salmon River	Jefferson		2140130	0	1.25
722	1A	Matheny Creek	Jefferson		2140200	0	3
735	2	Matheny Creek	Jefferson	Matheny Beaver Pond	2140200	0.4	0.4
634	2	Matheny Creek	Jefferson		2160000	0	12
826	1A	Matheny Creek	Jefferson	Empire Quarry	2160000	5.4	5.4
827	2	Matheny Creek	Jefferson	Frog quarry	2160000	6	6
828	2	Matheny Creek	Jefferson	Toad quarry	2160000	6.12	6.12
829	2	Matheny Creek	Jefferson	Cloud pit	2160000	6.19	6.19
830	2	Matheny Creek	Jefferson	Mercury pit	2160000	6.37	6.37
887	2	Matheny Creek	Jefferson	Matheny Creek Quarry	2160000	7.42	7.42
635	2	Matheny Creek	Jefferson		2160060	0	0.8
649	2	Matheny Creek	Jefferson		2160062	0	0.5
627	1A	Matheny Creek	Jefferson		2170000	0	14
831	1A	Matheny Creek	Jefferson	Arlo quarry	2170000	7.78	7.78
775	2	Matheny Creek	Jefferson		2170030	0	2
971	2	Middle Queets River	Jefferson		2170050	0	0.8
776	2	Matheny Creek	Jefferson		2170060	0	1
777	2	Sams River	Jefferson		2170080	0	0.8
778	1A	Sams River	Jefferson		2170110	0	1.5

Ref #	2022 Priority	6th Field Watershed Name	Watershed County	Site Name	Road #	BMP	EMP
779	2	Sams River	Jefferson		2170120	0	1
621	2	Matheny Creek	Jefferson		2180000	0	1.3
622	1A	Middle Queets River	Jefferson		2180000	1.3	3.7
623	2	Sams River	Jefferson		2180000	3.7	9.3
624	2	Middle Queets River	Jefferson		2180010	0	0.25
625	2	Middle Queets River	Jefferson		2180011	0	0.7
611	1A	Middle Queets River	Jefferson	Park Pit	2180011	0.3	0.3
458	1A	Middle Quinault River	Jefferson		2190000	4.2	8.3
832	1A	Middle Quinault River	Jefferson	Neptune quarry	2190000	7.5	7.5
791	2	Matheny Creek	Jefferson		2190000	8.3	12.1
459	2	Middle Quinault River	Jefferson		2190110	0	0.5
792	2	Matheny Creek	Jefferson		2190130	0	0.4
456	2	Matheny Creek	Jefferson		2190140	0	1.3
793	2	Matheny Creek	Jefferson		2190170	0	1.6
220	1A	East Fork Humptulips River	Grays Harbor		2200000	9.7	15
215	1A	East Fork Humptulips River	Grays Harbor	22 Road rock stockpile	2200000	12.5	12.5
982	2	East Fork Humptulips River	Grays Harbor		2200025	0	0.3
228	1A	Middle Wynoochee River	Grays Harbor	Harris Creek Quarry	2200340	0.7	0.7
247	1A	West Fork Humptulips River	Grays Harbor		2204000	0	9.7
441	2	West Fork Humptulips River	Grays Harbor		2204000	9.7	17.2
976	1A	West Fork Humptulips River	Grays Harbor		2204018	0	1.1
886	2	West Fork Humptulips River	Grays Harbor		2204023	0	0.5
885	2	West Fork Humptulips River	Grays Harbor		2204030	0	0.9
876	1A	West Fork Humptulips River	Grays Harbor		2204031	0	0.25
243	1A	West Fork Humptulips River	Grays Harbor	Elk Creek Pit	2204031		
809	2	West Fork Humptulips River	Grays Harbor		2204040	0	1.1
884	2	West Fork Humptulips River	Grays Harbor		2204043	0	0.1
248	2	West Fork Humptulips River	Grays Harbor		2204090	0	0.55
245	2	West Fork Humptulips River	Grays Harbor	Wineglass Pit	2204090	0.4	0.4
434	2	West Fork Humptulips River	Grays Harbor	Campbell Tree Grove CG	2204110		
717	1A	West Fork Humptulips River	Grays Harbor		2205000	0	2.5
711	1A	East Fork Humptulips River	Grays Harbor	Dot KV	2205000	2.5	3.4
810	1A	East Fork Humptulips River	Grays Harbor	Dot KV	2205020	0	0.6
837	2	East Fork Humptulips River	Grays Harbor		2205030	0.0	0.7
713	1A	East Fork Humptulips River	Grays Harbor	Dot KV	2205050	0	2
714	1A	East Fork Humptulips River	Grays Harbor	Dot KV	2205060	0	1.3
225	1A	East Fork Humptulips River	Grays Harbor	Six KV project	2206000	0	8.7
468	1A	East Fork Humptulips River	Grays Harbor		2206010	0	1.5
249	1A	West Fork Humptulips River	Grays Harbor	Dot KV	2207000	0	2.7
222	1A	East Fork Humptulips River	Grays Harbor	Dot KV	2207000	2.7	8
218	2	East Fork Humptulips River	Grays Harbor	Hump quarry	2207000	3.1	3.1
471	2	West Fork Humptulips River	Grays Harbor		2207000	7.9	10.91
838	1A	West Fork Humptulips River	Grays Harbor		2207010	0.0	0.3
223	1A	East Fork Humptulips River	Grays Harbor	Dot KV	2207030	0	1.1

Ref #	2022 Priority	6th Field Watershed Name	Watershed County	Site Name	Road #	BMP	EMP
718	1A	East Fork Humptulips River	Grays Harbor	Dot KV	2207040	0	1
719	1A	East Fork Humptulips River	Grays Harbor	Dot KV	2207060	0	1
472	2	West Fork Humptulips River	Grays Harbor		2207150	0	0.8
241	2	West Fork Humptulips River	Grays Harbor	Damper Pit	2207150	0.1	0.1
250	1A	West Fork Humptulips River	Grays Harbor		2208000	0	5.7
470	1A	West Fork Humptulips River	Grays Harbor		2208040	0	1
244	1A	West Fork Humptulips River	Grays Harbor	Joe Creek North Pit	2208040	0.7	0.7
219	1A	East Fork Humptulips River	Grays Harbor	Stovepipe Pass rock stockpile	2208100	0	0
224	1A	East Fork Humptulips River	Grays Harbor		2210000	0	6.3
216	2	East Fork Humptulips River	Grays Harbor	Cougar Quarry	2210000	5.1	5.1
525	2	East Fork Humptulips River	Grays Harbor		2210015	0	1.8
998	2	East Fork Humptulips River	Grays Harbor		2210018	0	0.1
999	2	East Fork Humptulips River	Grays Harbor		2210020	0	0.6
1000	2	East Fork Humptulips River	Grays Harbor		2210030	0	1.9
1001	2	East Fork Humptulips River	Grays Harbor		2210035	0	0.3
812	1A	East Fork Humptulips River	Grays Harbor		2210040	0	0.6
1002	2	East Fork Humptulips River	Grays Harbor		2210044	0	0.3
813	1A	East Fork Humptulips River	Grays Harbor		2210060	0	0.9
902	1A	East Fork Humptulips River	Grays Harbor	Wishkah pit	2210060	0	0
1003	2	East Fork Humptulips River	Grays Harbor		2210072	0	0.6
1004	2	East Fork Humptulips River	Grays Harbor		2210073	0	0.1
984	2	Upper Wishkah River	Grays Harbor		2210082	0	1.2
985	2	Upper Wishkah River	Grays Harbor		2210084	0	0.3
986	2	Upper Wishkah River	Grays Harbor		2210088	0	0.8
526	1A	Upper Wishkah River	Grays Harbor		2210100	0	0.25
901	1A	West Fork Humptulips River	Grays Harbor	Newberry Salvage Unit G4B	2220030	0	0
803	2	West Fork Humptulips River	Grays Harbor		2220031	0	0.8
869	2	West Fork Humptulips River	Grays Harbor		2220039	0	0.3
801	2	West Fork Humptulips River	Grays Harbor		2220050	0	0.9
871	2	West Fork Humptulips River	Grays Harbor		2220052	0	0.35
802	2	West Fork Humptulips River	Grays Harbor		2220053	0	0.4
873	2	West Fork Humptulips River	Grays Harbor		2220056	0	0.2
872	2	West Fork Humptulips River	Grays Harbor		2220058	0	0.1
864	2	West Fork Humptulips River	Grays Harbor		2220059	0.0	0.1
865	2	West Fork Humptulips River	Grays Harbor		2220070	0.0	0.2
866	2	West Fork Humptulips River	Grays Harbor		2220080	0	0.4
805	2	West Fork Humptulips River	Grays Harbor		2220083	0	0.3
804	2	West Fork Humptulips River	Grays Harbor		2220084	0	0.7
806	2	West Fork Humptulips River	Grays Harbor		2220088	0	0.3
868	2	West Fork Humptulips River	Grays Harbor		2220089	0	0.2
875	2	West Fork Humptulips River	Grays Harbor		2220090	0	0.5
209	1A	Cook Creek	Grays Harbor		2257000	0	3.3
210	2	Cook Creek	Grays Harbor		2257080	0	1.2

Ref #	2022 Priority	6th Field Watershed Name	Watershed County	Site Name	Road #	BMP	EMP
1009	2	Cook Creek	Grays Harbor		2257086	0	1.6
208	1A	Cook Creek	Grays Harbor	Cook Creek Pit	2257087	0.2	0.2
212	2	Cook Creek	Grays Harbor		2258000	0	5.3
961	1A	West Fork Humptulips River	Grays Harbor	WF Hump unit F7 temp road A	2258000	4.75	4.75
962	1A	Cook Creek	Grays Harbor	WF Hump unit F7 temp road B	2258000	5	5
691	1A	West Fork Humptulips River	Grays Harbor	The End KV	2258000	5.3	7.3
964	1A	West Fork Humptulips River	Grays Harbor	The End TS, unit F9 temp road	2258000	6.3	6.3
963	1A	West Fork Humptulips River	Grays Harbor	The End TS, unit F11 temp road	2258000	7.2	7.2
945	2	West Fork Humptulips River	Grays Harbor		2258010	0	0.5
213	2	Cook Creek	Grays Harbor		2258020	0	1.9
214	2	Cook Creek	Grays Harbor		2258022	0	0.1
692	1A	West Fork Humptulips River	Grays Harbor	The End KV	2258031	0	1.7
618	2	Cook Creek	Grays Harbor		2258040	0	0.5
819	1A	Quinalt Lake	Grays Harbor		2258042	0	1.8
797	1A	Cook Creek	Grays Harbor	The End KV	2258050	0	0.4
991	2	West Fork Humptulips River	Grays Harbor		2258100	0	5
237	1A	Stevens Creek	Grays Harbor		2259000	0	3.2
252	1A	West Fork Humptulips River	Grays Harbor		2259000	3.2	6.9
818	1A	Stevens Creek	Grays Harbor		2259010	0	0.6
817	2	Stevens Creek	Grays Harbor		2259020	0	1
589	1A	West Fork Humptulips River	Grays Harbor		2259040	0	3.8
246	2	West Fork Humptulips River	Grays Harbor	Grouse Ridge quarry	2259040	0.6	0.6
239	1A	Stevens Creek	Grays Harbor		2259042	0	0.7
1010	2	West Fork Humptulips River	Grays Harbor		2259043	0	0.6
1008	2	Stevens Creek	Grays Harbor		2259044	0	0.3
795	2	West Fork Humptulips River	Grays Harbor		2259048	0	0.9
1005	1A	West Fork Humptulips River	Grays Harbor		2259049	0	0.2
796	1A	West Fork Humptulips River	Grays Harbor		2259050	0	0.8
1007	2	West Fork Humptulips River	Grays Harbor		2259149	0	0.4
800	1A	West Fork Humptulips River	Grays Harbor		2259150	0	0.3
919	1A	Upper Wynoochee River	Grays Harbor		2270000	0	6
993	1A	Upper Wynoochee River	Grays Harbor	Seven rock pit	2270000	1.3	1.3
496	2	Upper Wynoochee River	Grays Harbor		2270000	6	9.9
240	2	Upper Wynoochee River	Grays Harbor		2270000	9.9	18
497	1A	Upper Wynoochee River	Grays Harbor		2270000	18	25.46
929	2	Upper Wynoochee River	Grays Harbor		2270120	0	0.8
930	2	Upper Wynoochee River	Grays Harbor		2270130	0	0.5
931	2	Upper Wynoochee River	Grays Harbor		2270140	0	0.6
932	2	Upper Wynoochee River	Grays Harbor		2270141	0	0.4
933	2	Upper Wynoochee River	Grays Harbor		2270160	0	0.5
917	2	Upper Wynoochee River	Grays Harbor		2270180	0	0.6

Ref #	2022 Priority	6th Field Watershed Name	Watershed County	Site Name	Road #	BMP	EMP
449	2	Upper Wynoochee River	Grays Harbor		2270400	0	0.5
498	2	Upper Wynoochee River	Grays Harbor		2270600	0	2
920	1A	Upper Wynoochee River	Grays Harbor		2270700	0	2.2
266	1A	Quinault Lake	Grays Harbor		2272000	0.9	3.1
276	2	Quinault Lake	Grays Harbor	Quinault Loop Trail #854	2272000		
273	2	Quinault Lake	Grays Harbor	Willaby CG	2272040		
268	1A	Quinault Lake	Grays Harbor		2272130	0	0.5
269	2	Quinault Lake	Grays Harbor	Falls Creek CG	2272140		
628	1A	Quinault Lake	Grays Harbor	Gatton Creek CG and TH	2272150		
271	1A	Quinault Lake	Grays Harbor		2272160	0	0.5
1022	2	Quinault Lake	Grays Harbor	Zeigler Creek/Norwood	2272170		
527	1A	Big Creek/Upper Quinault River	Grays Harbor	Colonel Bob Trailhead	2272200	0.1	0.1
260	1A	Middle Quinault River	Grays Harbor		2273000	0	1.2
257	1A	Middle Quinault River	Grays Harbor	Boulder Creek Pit	2273000		
1030	1A	Middle Quinault River	Grays Harbor	Boulder Creek Knotweed	2273000		
263	2	Middle Quinault River	Grays Harbor		2273020	0	0.6
430	2	Middle Quinault River	Grays Harbor		2273030	0	0.5
431	2	Middle Quinault River	Grays Harbor		2273040	0	0.6
262	2	Middle Quinault River	Grays Harbor		2273100	0	0.8
432	2	Middle Quinault River	Grays Harbor		2273150	0	0.2
433	2	Middle Quinault River	Grays Harbor		2273160	0	0.3
253	2	West Fork Humptulips River	Grays Harbor		2280000	0	4.7
798	2	West Fork Humptulips River	Grays Harbor		2280070	0	0.8
469	1A	East Fork Humptulips River	Grays Harbor	Switch KV Project	2281000	0	6
217	1A	East Fork Humptulips River	Grays Harbor	Flatbottom quarry	2281000	2.1	2.1
894	1A	Middle Wynoochee River	Grays Harbor		2281000	6	8.2
895	1A	Middle Wynoochee River	Grays Harbor		2281100	0	2.3
896	1A	Middle Wynoochee River	Grays Harbor		2281110	0	1.9
898	1A	Middle Wynoochee River	Grays Harbor		2281150	0	2.8
737	2	Middle Wynoochee River	Grays Harbor		2281300	0	2
712	2	East Fork Humptulips River	Grays Harbor		2281310	0	1.24
715	2	East Fork Humptulips River	Grays Harbor		2281330	0	0.8
710	2	East Fork Humptulips River	Grays Harbor		2281480	0	5
491	1A	Upper Wynoochee River	Grays Harbor		2294000	0	5.5
450	1A	Upper Wynoochee River	Grays Harbor		2294000	5.5	6.8
493	1A	Upper Wynoochee River	Grays Harbor		2294000	7.2	9.43
899	1A	Middle Wynoochee River	Grays Harbor		2294000	9.4	16.3
229	1A	Middle Wynoochee River	Grays Harbor	Simpson Quarry	2294130	0.7	0.7
227	1A	Middle Wynoochee River	Grays Harbor	Corp of Engineers Quarry	2294131	0.1	0.1
916	1A	Middle Wynoochee River	Grays Harbor		2294150	1	2.3
422	1A	Upper Wynoochee River	Grays Harbor	Coho CG	2294200		
942	1A	Upper Wynoochee River	Grays Harbor		2294220	0	0.2
941	2	Upper Wynoochee River	Grays Harbor		2294320	0	0.2
944	2	Upper Wynoochee River	Grays Harbor		2294340	0	0.15

Ref #	2022 Priority	6th Field Watershed Name	Watershed County	Site Name	Road #	BMP	EMP
936	2	Upper Wynoochee River	Grays Harbor		2294360	0	1.3
937	2	Upper Wynoochee River	Grays Harbor		2294370	0	0.8
938	2	Upper Wynoochee River	Grays Harbor		2294400	0	0.25
939	2	Upper Wynoochee River	Grays Harbor		2294410	0	0.3
940	2	Upper Wynoochee River	Grays Harbor		2294420	0	0.25
348	1A	Lower South Fork Skokomish River	Mason		2300000	0	9.5
610	1A	Lower South Fork Skokomish River	Mason	23 Road deep patch borrow	2300000	7.5	7.5
395	1A	Upper South Fork Skokomish	Mason		2300000	9.5	18
522	2	Middle Fork Satsop	Mason		2300000	17.9	21
523	1A	Upper West Fork Satsop River	Mason		2300000	21	32.4
585	1A	Upper West Fork Satsop River	Mason	23 road rock stockpile	2300000	26.2	26.2
693	1A	Middle Wynoochee River	Grays Harbor		2300000	32.4	34
342	2	Lower South Fork Skokomish River	Mason		2300200	0	2
341	1A	Lower South Fork Skokomish River	Mason	Old Oxbow CG	2300220	0	0
983	1A	Lower South Fork Skokomish River	Mason	Old Oxbow CG access road	2300220	0	1.5
419	1A	Lower South Fork Skokomish River	Mason		2300221	0	0.4
343	1A	Lower South Fork Skokomish River	Mason		2340000	0	3.4
339	2	Lower North Fork Skokomish River	Mason		2340000	3.4	9.1
399	1A	Upper South Fork Skokomish	Mason	Oh No KV Project	2340000	9.1	12.9
380	1A	Upper South Fork Skokomish	Mason	Brown Creek CG	2340000		
654	2	Lower North Fork Skokomish River	Mason	Lake West	2340000		
600	Survey	Lower South Fork Skokomish River	Mason		2340040	0	0.7
601	Survey	Lower South Fork Skokomish River	Mason		2340040	1.2	1.9
598	1A	Lower South Fork Skokomish River	Mason		2340100	0	1.4
599	Survey	Lower South Fork Skokomish River	Mason		2340110	0	2.65
353	1A	Lower South Fork Skokomish River	Mason		2340120	0	0.4
619	1A	Lower South Fork Skokomish River	Mason	Boundary TS, unit 10	2340120	0.2	0.2
997	1A	Lower North Fork Skokomish River	Mason	Orchard Loner	2340120	1.4	2.5
839	2	Lower North Fork Skokomish River	Mason		2340140	0.0	0.8
503	2	Lower North Fork Skokomish River	Mason	Dennie Ahl seed orchard	2340140		
418	1A	Lower North Fork Skokomish River	Mason	Oh No KV Project	2340200	0.5	5.7
421	2	Lower South Fork Skokomish River	Mason		2340210	0	0.5
835	1A	Lower South Fork Skokomish River	Mason	Oh No KV Project	2340230	0.0	2.1
490	1A	Lower North Fork Skokomish River	Mason	Oh No KV Project	2340250	0	1.5
532	2	Upper South Fork Skokomish	Mason		2340290	0	1.7
551	2	Lower North Fork Skokomish	Mason		2340360	0	0.5
534	2	Upper South Fork Skokomish	Mason		2340361	0	0.2
382	1A	Upper South Fork Skokomish	Mason		2340400	0	6.3
370	1A	Upper South Fork Skokomish	Mason		2340430	0	1.2
371	1A	Upper South Fork Skokomish	Mason		2340433	0	0.15
372	1A	Upper South Fork Skokomish	Mason		2340437	0	0.15
536	1A	Lower South Fork Skokomish River	Mason		2340520	0	0.3
511	2	Lower South Fork Skokomish River	Mason		2342000	14.3	16

Ref #	2022 Priority	6th Field Watershed Name	Watershed County	Site Name	Road #	BMP	EMP
512	2	Lower South Fork Skokomish River	Mason		2342200	0	3.4
344	1A	Lower South Fork Skokomish River	Mason		2350000	0	9
591	1A	Middle Fork Satsop	Mason		2350000	9	12.1
345	2	Lower South Fork Skokomish River	Mason		2351000	0	12.9
565	2	Lower South Fork Skokomish River	Mason		2351110	0	0.3
566	2	Lower South Fork Skokomish River	Mason		2351120	0	1
567	2	Lower South Fork Skokomish River	Mason		2351140	0	0.27
513	2	Lower South Fork Skokomish River	Mason		2351160	0	1.9
834	1A	Lower South Fork Skokomish River	Mason		2352000	0.0	3.7
915	2	Upper West Fork Satsop River	Mason		2352000	3.7	10.8
833	2	Lower South Fork Skokomish River	Mason		2352100	0.0	0.8
519	2	Middle Fork Satsop	Mason		2352400	0	3.6
463	1A	Upper South Fork Skokomish	Mason		2353000	0	13.2
381	2	Upper South Fork Skokomish	Mason	Brown Creek Flat Quarry	2353000	1.2	1.2
390	2	Upper South Fork Skokomish	Mason	Lebar Horse CG	2353000		
401	2	Upper South Fork Skokomish	Mason		2353100	0	0.5
402	1A	Upper South Fork Skokomish	Mason		2353120	0	0.4
403	1A	Upper South Fork Skokomish	Mason		2353140	0	1.4
464	1A	Upper South Fork Skokomish	Mason		2354000	0	1.8
369	1A	Upper South Fork Skokomish	Mason	Brown Creek Quarry	2354000		
385	2	Upper South Fork Skokomish	Mason		2354200	0	3
992	1A	Upper South Fork Skokomish	Mason	Big Dig stockpile	2354200	0.3	0.3
379	1A	Upper South Fork Skokomish	Mason		2355000	0	6.6
388	2	Upper South Fork Skokomish	Mason		2355100	0	0.7
389	2	Upper South Fork Skokomish	Mason		2355300	0	0.9
518	2	Middle Fork Satsop	Mason		2356000	4.2	6.6
632	2	Upper South Fork Skokomish	Mason		2356000	6.6	9.6
405	2	Upper South Fork Skokomish	Mason		2360000	0	4.75
406	2	Upper South Fork Skokomish	Mason		2360100	0	0.55
394	1A	Upper South Fork Skokomish	Mason	V1043 Quarry	2360100	0.3	0.3
392	1A	Upper South Fork Skokomish	Mason		2361000	0	5.9
408	1A	Upper South Fork Skokomish	Mason	Pine Lake Trailhead	2361200	0	2.6
409	1A	Upper South Fork Skokomish	Mason	Pine Lake Trail	2361210	0	2.7
520	2	Upper South Fork Skokomish	Mason		2361400	1	1.2
374	1A	Upper South Fork Skokomish	Mason		2361600	0	5.4
397	1A	Upper South Fork Skokomish	Mason		2361700	0	0.6
699	2	Upper West Fork Satsop River	Mason		2364000	0	8.1
592	2	Middle Fork Satsop	Mason		2366000	2.3	12.8
741	1A	Upper West Fork Satsop River	Grays Harbor		2371000	0	6.6
948	1A	Middle Wynoochee River	Grays Harbor	Cotton quarry	2371000	3	3
947	1A	Upper West Fork Satsop River	Grays Harbor	4 O'clock Pit	2371000	3.7	3.7
926	1A	Middle Wynoochee River	Grays Harbor		2371100	0	0.75
950	1A	Middle Wynoochee River	Grays Harbor		2371110	0	0.4
949	1A	Middle Wynoochee River	Grays Harbor	Foxtail pit	2371110	0.1	0.1

Ref #	2022 Priority	6th Field Watershed Name	Watershed County	Site Name	Road #	BMP	EMP
927	1A	Middle Wynoochee River	Grays Harbor		2371130	0	0.5
928	1A	Middle Wynoochee River	Grays Harbor		2371180	0	1.9
924	1A	Upper West Fork Satsop River	Grays Harbor		2371200	0	1.1
925	1A	Middle Wynoochee River	Grays Harbor		2371210	0	0.7
972	1A	Upper West Fork Satsop River	Grays Harbor		2371300	0	1.4
597	2	Upper Wynoochee River	Grays Harbor		2372000	9.2	13.1
333	2	Lilliwaup Creek	Mason		2400000	0	8.8
361	1A	Middle North Fork Skokomish River	Mason		2400000	8.8	14.5
360	1A	Middle North Fork Skokomish River	Mason	Cushman Riprap	2400000	12.3	12.3
364	1A	Middle North Fork Skokomish River	Mason	Lake Cushman Quarry	2400000	13.6	13.6
977	2	Middle North Fork Skokomish River	Mason	Big Creek Trail # 827	2400000		
1011	1A	Middle North Fork Skokomish River	Mason	Upper Big Creek Loop Trail # 827.1	2400000		
327	1A	Lilliwaup Creek	Mason	Cushman Pit	2400025	0.2	0.2
337	2	Lilliwaup Creek	Mason		2400026	0	0.3
328	2	Lilliwaup Creek	Mason	Mint Meadow	2400026		
363	2	Middle North Fork Skokomish River	Mason	Big Creek CG	2400031		
657	1A	Middle North Fork Skokomish River	Mason	Watertower road	2400035	0	0.5
686	2	Mainstem Hamma Hamma River	Mason		2401000	0	0.8
477	1A	Jefferson Creek	Mason		2401000	0.8	12.1
324	2	Jefferson Creek	Mason	Jefferson Creek Pit	2401000	3.2	3.2
331	2	Lilliwaup Creek	Mason		2419000	0	1.4
357	1A	Mainstem Hamma Hamma River	Mason		2500000	2.8	13.5
863	1A	Mainstem Hamma Hamma River	Mason	Hamma Hamma CG Loop Trail #128	2500000		
355	1A	Mainstem Hamma Hamma River	Mason	Hamma Hamma Pit	2500011	0.2	0.2
429	1A	Mainstem Hamma Hamma River	Mason	Hamma Hamma CG	2500030		
428	1A	Mainstem Hamma Hamma River	Mason	Lena CG	2500040		
358	1A	Mainstem Hamma Hamma River	Mason		2502000	0	8.3
279	survey	Fulton Creek/Waketick Creek	Jefferson		2510000	4.6	12.5
309	2	Lower Duckabush River	Jefferson		2510000	14.4	21
310	2	Lower Duckabush River	Jefferson	Collins CG	2510070		
298	1A	Lower Dosewallips River	Jefferson		2610000	0	3.2
631	2	Lower Dosewallips River	Jefferson		2610000	3.2	5.4
768	1A	Lower Dosewallips River	Jefferson	Lower Dosewallips River Riparian Area	2610000		
300	2	Lower Dosewallips River	Jefferson		2610040	0	0.6
303	2	Lower Dosewallips River	Jefferson	Elkhorn CG	2610050		
319	1A	Spencer Creek/Maple Creek	Jefferson	Seal Rock CG	2610200		
295	1A	Lower Big Quilcene River	Jefferson		2620000	0	4.3
301	2	Lower Dosewallips River	Jefferson		2620000	4.3	11.6
304	2	Lower Dosewallips River	Jefferson		2620030	0	2
761	survey	Spencer Creek / Marple Creek	Jefferson		2620030	2	7.8
305	2	Lower Dosewallips River	Jefferson		2620030	7.8	9.7
765	survey	Spencer Creek / Marple Creek	Jefferson		2620032	0	0.5

Ref #	2022 Priority	6th Field Watershed Name	Watershed County	Site Name	Road #	BMP	EMP
762	survey	Spencer Creek / Marple Creek	Jefferson		2620035	0	1.1
763	survey	Spencer Creek / Marple Creek	Jefferson		2620036	0	0.6
764	2	Spencer Creek / Marple Creek	Jefferson		2620043	0	0.7
306	2	Lower Dosewallips River	Jefferson		2620050	0	2.7
307	2	Lower Dosewallips River	Jefferson		2620051	0	0.8
308	2	Lower Dosewallips River	Jefferson		2620053	0	1.9
302	2	Lower Dosewallips River	Jefferson		2620056	0	0.8
617	2	Lower Big Quilcene River	Jefferson		2620060	0	2.8
653	2	Lower Big Quilcene River	Jefferson		2650000	0	3.1
658	2	Upper Big Quilcene River	Jefferson		2650000	3.1	7.5
289	2	Lower Big Quilcene River	Jefferson		2700000	0	2.6
455	2	Upper Big Quilcene River	Jefferson		2700000	2.6	12.7
199	2	Little Quilcene River	Clallam		2700000	12.65	17.65
462	2	Lower Big Quilcene River	Jefferson		2700040	0	3.7
590	2	Lower Big Quilcene River	Jefferson	PT Muni WS caretakers cabin	2700040		
296	2	Lower Big Quilcene River	Jefferson		2700080	0	0.3
767	1A	Lower Big Quilcene River	Jefferson	Lower Big Quilcene Trail #833	2700080		
672	2	Upper Big Quilcene River	Clallam		2700090	0	2
201	2	Little Quilcene River	Clallam		2700280	0	0.6
202	2	Little Quilcene River	Clallam		2700281	0	0.5
297	1A	Lower Big Quilcene River	Jefferson		2730000	0	2.6
290	1A	Lower Big Quilcene River	Jefferson		2730011	0	0.9
292	1A	Lower Big Quilcene River	Jefferson	Falls View CG	2730200		
285	1A	Lower Big Quilcene River	Jefferson	Quilcene office compound	2730300		
291	2	Lower Big Quilcene River	Jefferson		2740000	0	1.5
454	2	Upper Big Quilcene River	Jefferson		2740000	1.5	4.8
974	2	Upper Big Quilcene River	Jefferson	Upper Big Quilcene Trail #833.1	2750000		
922	2	Upper Big Quilcene River	Jefferson		2760000	0	5
766	2	Upper Big Quilcene River	Jefferson	Sink Lake	2760000		
198	2	Little Quilcene River	Clallam		2800000	0	5.5
194	2	Little Quilcene River	Clallam	Bon Jon Quarry	2800000	4.6	4.6
107	2	Middle Dungeness River	Clallam		2800000	5.5	14.8
687	2	Canyon Creek /Pats Creek	Clallam		2800000	14.8	15.6
907	1A	Middle Dungeness River	Clallam		2800120	0	3
995	1A	Middle Dungeness River	Clallam		2800121	0	0.2
108	1A	Middle Dungeness River	Clallam		2800130	0	0.6
101	1A	Middle Dungeness River	Clallam	Lost Pit (aka Canine Pit)	2800130	0.7	0.7
109	2	Middle Dungeness River	Clallam		2800132	0	0.6
889	2	Middle Dungeness River	Clallam		2800140		
906	2	Middle Dungeness River	Clallam		2800220	0	1.2
981	2	Middle Dungeness River	Clallam		2800240	0	0.8
675	1A	Middle Dungeness River	Clallam		2800250	0	1.1

Ref #	2022 Priority	6th Field Watershed Name	Watershed County	Site Name	Road #	BMP	EMP
113	2	Middle Dungeness River	Clallam		2800260	0	1.5
908	2	Middle Dungeness River	Clallam		2800262	0	0.6
911	2	Middle Dungeness River	Clallam		2800290	0	0.3
616	1A	Canyon Creek /Pats Creek	Clallam	Schmits Knob	2800310		
669	1A	Canyon Creek /Pats Creek	Clallam		2800320	0	1.7
670	1A	Jimmy-come-lately Creek	Clallam		2800320	1.7	2.6
667	2	Canyon Creek /Pats Creek	Clallam		2800321	0	0.5
668	2	Jimmy-come-lately Creek	Clallam		2800321	0.5	1.2
671	1A	Middle Dungeness River	Clallam		2800325	0	0.6
75	2	Jimmy-come-lately Creek	Clallam	Louella Work Center	2800350		
65	1A	Jimmy-come-lately Creek	Clallam		2800351	0	0.8
58	2	Jimmy-come-lately Creek	Clallam	Louella Rock pit	2800351	0.4	0.4
921	2	Jimmy-come-lately Creek	Clallam		2800353		
67	1A	Jimmy-come-lately Creek	Clallam		2800360	0	2.4
59	2	Jimmy-come-lately Creek	Clallam	Luella LuLu quarry	2800360	0.9	0.9
77	2	Jimmy-come-lately Creek	Clallam		2800362	0	0.4
102	1A	Middle Dungeness River	Clallam		2820000	0	2.5
196	2	Little Quilcene River	Clallam		2820000	2.5	4.2
912	1A	Middle Dungeness River	Clallam		2820010	0	3.1
110	2	Middle Dungeness River	Clallam	Gold Creek Trail	2830000	0	5.3
78	2	Jimmy-come-lately Creek	Clallam		2840000	0.6	4.1
502	2	Snow Creek/Salmon River	Clallam		2840000	4.1	5.4
79	1A	Jimmy-come-lately Creek	Clallam		2840030	0	3
80	1A	Jimmy-come-lately Creek	Clallam		2840034	0	1.4
81	1A	Jimmy-come-lately Creek	Clallam		2840035	0	0.3
82	1A	Jimmy-come-lately Creek	Clallam		2840036	0	0.35
70	1A	Jimmy-come-lately Creek	Clallam		2840070	0	1.7
71	1A	Jimmy-come-lately Creek	Clallam		2840071	0	2
68	1A	Jimmy-come-lately Creek	Clallam		2840080	0	1.6
57	1A	Jimmy-come-lately Creek	Clallam	Coho Pit	2840080	0.2	0.2
666	1A	Jimmy-come-lately Creek	Clallam		2840084	0	0.25
665	1A	Jimmy-come-lately Creek	Clallam		2840088	0	0.15
83	1A	Jimmy-come-lately Creek	Clallam		2840120	0	0.7
62	1A	Jimmy-come-lately Creek	Clallam	Wolf Quarry 2	2840120	0.3	0.3
843	1A	Jimmy-come-lately Creek	Clallam		2840130	0.0	1.1
914	1A	Snow Creek/Salmon River	Clallam		2840150	0	0.6
845	1A	Snow Creek/Salmon River	Clallam		2845000	0.0	5.4
147	2	Snow Creek/Salmon River	Clallam		2845070	0	1.5
148	2	Snow Creek/Salmon River	Clallam		2845073	0	0.9
61	1A	Jimmy-come-lately Creek	Clallam	2845073 spur pit	2845073	0.9	0.9
848	2	Snow Creek/Salmon River	Clallam		2845090	0.0	0.5
847	1A	Snow Creek/Salmon River	Clallam		2845120	0.0	1.7
501	2	Snow Creek/Salmon River	Clallam		2850000	0	4.6
84	1A	Jimmy-come-lately Creek	Clallam		2850000	4.6	7.4

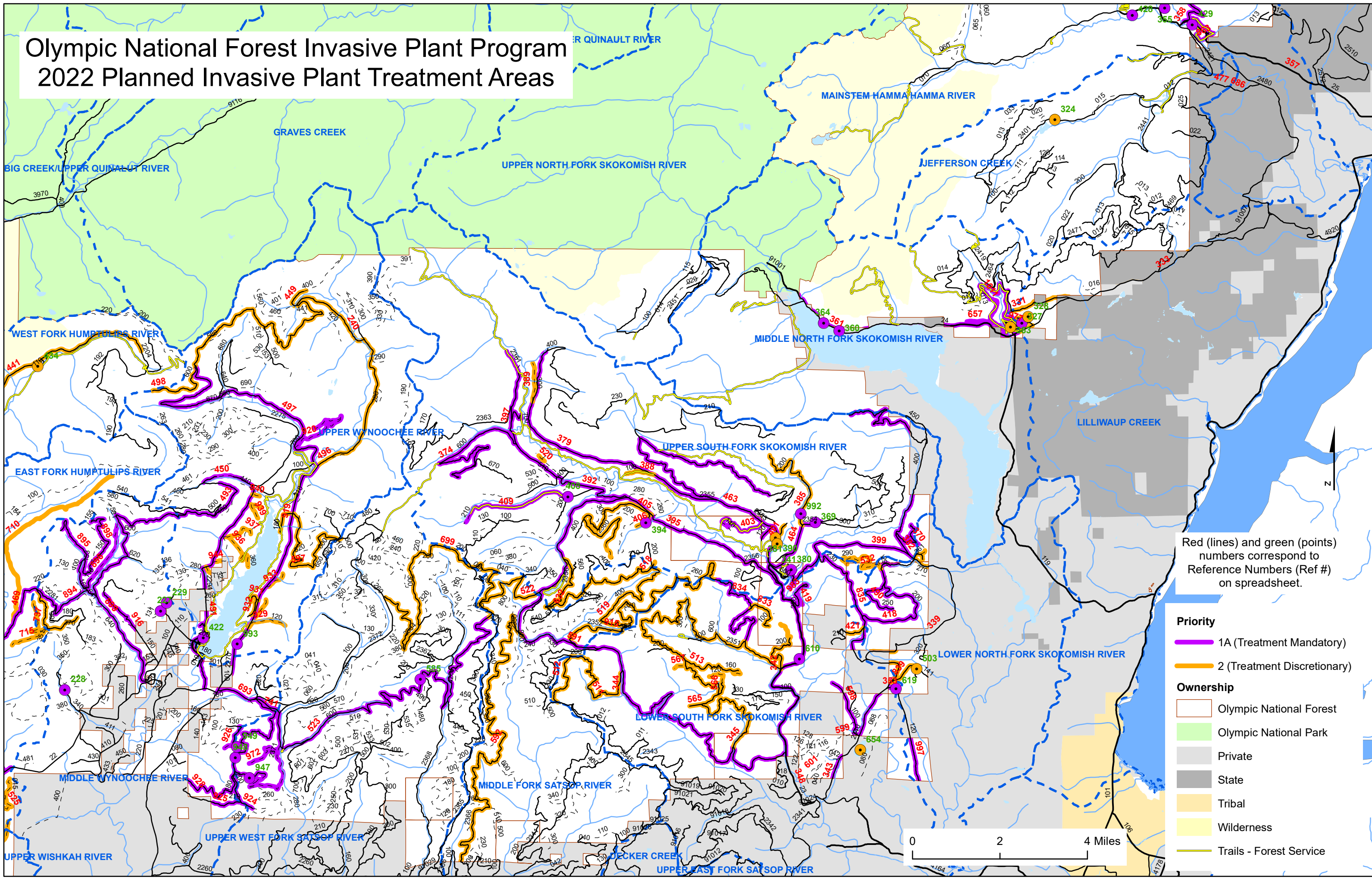
Ref #	2022 Priority	6th Field Watershed Name	Watershed County	Site Name	Road #	BMP	EMP
528	2	Jimmy-come-lately Creek	Clallam		2850090	0	1.1
150	2	Snow Creek/Salmon River	Clallam		2852000	0	2.6
151	1A	Snow Creek/Salmon River	Clallam		2852090	0	0.18
849	1A	Snow Creek/Salmon River	Clallam		2852150	0.0	1.3
63	1A	Jimmy-come-lately Creek	Clallam		2855000	0	2.8
73	1A	Jimmy-come-lately Creek	Clallam		2855030	0	2.6
74	2	Jimmy-come-lately Creek	Clallam		2855032	0	0.8
64	1A	Jimmy-come-lately Creek	Clallam		2855070	0	1.5
60	1A	Jimmy-come-lately Creek	Clallam	Raccoon Pit	2855070	1.3	1.3
66	1A	Jimmy-come-lately Creek	Clallam		2855100	0	1.1
32	1A	Canyon Creek /Pats Creek	Clallam	unnamed gravel pit	2870000	0	0
33	2	Canyon Creek /Pats Creek	Clallam		2870000	0	0.9
24	1A	Canyon Creek /Pats Creek	Clallam		2870000	0.9	4.5
19	1A	Canyon Creek /Pats Creek	Clallam	Lower Caraco Quarry	2870000	1.9	1.9
21	1A	Canyon Creek /Pats Creek	Clallam	Upper Caraco Quarry	2870000	2.2	2.2
96	1A	Lower Gray Wolf River	Clallam		2870000	4.5	8
103	2	Middle Dungeness River	Clallam		2870000	8	14.3
160	2	Upper Dungeness River	Clallam		2870000	14.3	21.15
162	2	Upper Dungeness River	Jefferson	Camp Handy	2870000		
759	1A	Upper Dungeness River	Jefferson	Dungeness Trail #833.2	2870000		
760	1A	Upper Dungeness River	Jefferson	Heather Basin Trail	2870000		
23	2	Canyon Creek /Pats Creek	Clallam		2870030	0	1.8
11	2	Canyon Creek /Pats Creek	Clallam		2870050	0	2.8
7	2	Canyon Creek /Pats Creek	Clallam	Caraco Cat Unit 5	2870050		
13	2	Canyon Creek /Pats Creek	Clallam		2870052	0	0.3
14	1A	Canyon Creek /Pats Creek	Clallam		2870053	0	1.5
31	1A	Canyon Creek /Pats Creek	Clallam		2870054	0	0.7
6	2	Canyon Creek /Pats Creek	Clallam	Caraco Cat Unit 6	2870054		
15	2	Canyon Creek /Pats Creek	Clallam		2870056	0	0.6
9	2	Canyon Creek /Pats Creek	Clallam	Caraco Cat Unit 3	2870056		
16	2	Canyon Creek /Pats Creek	Clallam		2870057	0	0.2
8	2	Canyon Creek /Pats Creek	Clallam	Caraco Cat Unit 2	2870057		
17	1A	Canyon Creek /Pats Creek	Clallam		2870058	0	0.5
18	2	Canyon Creek /Pats Creek	Clallam		2870059	0	0.4
10	1A	Canyon Creek /Pats Creek	Clallam	Cranberry Bog	2870059		
34	2	Canyon Creek /Pats Creek	Clallam		2870110	0	0.3
35	2	Canyon Creek /Pats Creek	Clallam		2870130	0	0.6
36	2	Lower Gray Wolf River	Clallam		2870150	0	1.3
586	1A	Lower Gray Wolf River	Clallam	Armpit quarry	2870150	0.45	0.45
105	1A	Middle Dungeness River	Clallam		2870230	0	1.4
106	1A	Middle Dungeness River	Clallam		2870250	0	1.6
161	1A	Upper Dungeness River	Clallam		2870270	0	3.5
25	1A	Canyon Creek /Pats Creek	Clallam		2875000	0	3.6
5	1A	Canyon Creek /Pats Creek	Clallam	Canyon Pit	2875000	2.75	2.75

Ref #	2022 Priority	6th Field Watershed Name	Watershed County	Site Name	Road #	BMP	EMP
93	2	Lower Gray Wolf River	Clallam		2875000	3.7	6.5
27	2	Canyon Creek /Pats Creek	Clallam		2875020	0	0.6
98	1A	McDonald Creek/Siebert Creek	Clallam		2877000	0	4.6
99	1A	McDonald Creek/Siebert Creek	Clallam	Pat's Prairie	2877000		
28	2	Canyon Creek /Pats Creek	Clallam		2877040	0	1.1
614	2	McDonald Creek/Siebert Creek	Clallam		2877050	0	0.9
913	2	McDonald Creek/Siebert Creek	Clallam		2877052	0	0.3
904	2	McDonald Creek/Siebert Creek	Clallam		2877090	0	1.4
100	1A	McDonald Creek/Siebert Creek	Clallam		2877100	0	0.3
978	2	McDonald Creek/Siebert Creek	Clallam		2877140	0	0.2
979	2	McDonald Creek/Siebert Creek	Clallam		2877150	0	0.2
980	2	McDonald Creek/Siebert Creek	Clallam		2877160	0	0.1
26	1A	Canyon Creek /Pats Creek	Clallam		2878000	0	4
840	1A	Canyon Creek /Pats Creek	Clallam	Slab Camp / Deer Ridge TH	2878000	4.0	4.0
38	1A	Canyon Creek /Pats Creek	Clallam		2878060	0	0.75
39	1A	Canyon Creek /Pats Creek	Clallam		2878080	0	0.75
40	1A	Canyon Creek /Pats Creek	Clallam		2878085	0	0.7
29	2	Canyon Creek /Pats Creek	Clallam		2878100	0	0.95
905	2	Lower Gray Wolf River	Clallam		2878100	0.9	1.6
607	2	Canyon Creek /Pats Creek	Clallam		2878101	0	0.1
603	2	Canyon Creek /Pats Creek	Clallam		2878102	0	0.4
606	2	Canyon Creek /Pats Creek	Clallam		2878104	0	0.2
604	1A	Canyon Creek /Pats Creek	Clallam		2878108	0	0.1
605	1A	Canyon Creek /Pats Creek	Clallam		2878109	0	0.25
41	2	Canyon Creek /Pats Creek	Clallam		2878110	0	0.9
42	2	Canyon Creek /Pats Creek	Clallam		2878120	0	1
602	2	Canyon Creek /Pats Creek	Clallam		2878123	0	0.2
20	1A	Canyon Creek /Pats Creek	Clallam	Ned Hill Quarry	2878123	0.1	0.1
30	2	Lower Gray Wolf River	Clallam		2880000	0	1
688	2	Canyon Creek /Pats Creek	Clallam		2880000	1	1.85
94	2	Lower Gray Wolf River	Clallam	Dungeness Forks CG	2880050		
156	1A	South Fork Calawah	Clallam		2900000	3.8	26.4
136	1A	North Fork Calawah River	Clallam		2900000	26.4	36.8
174	1A	Upper Sol Duc River	Clallam		2900000	36.7	38.3
165	1A	Upper Sol Duc River	Clallam	Bonidu Pit	2900000	37.2	37.2
960	2	South Fork Calawah River	Clallam	Klahanie CG	2900011		
152	1A	North Fork Calawah River	Clallam	Calawah Pit	2900015	0.1	0.1
968	2	South Fork Calawah River	Clallam		2900070	0	2.3
748	2	South Fork Calawah	Clallam		2900072	0	1.5
166	1A	Upper Sol Duc River	Clallam	Klahowya CG	2900990		
645	1A	Bockman Creek	Clallam		2902000	5.8	9.2
588	1A	Bockman Creek	Clallam	Bockman Pit	2902000	9.2	9.2
990	1A	Bockman Creek	Clallam		2902270	0	1.6
1032	1A	Bockman Creek	Clallam		2902272	0	0.4

Ref #	2022 Priority	6th Field Watershed Name	Watershed County	Site Name	Road #	BMP	EMP
1031	1A	Bockman Creek	Clallam		2902300	0	0.8
647	1A	Bockman Creek	Clallam		2902360	0	1.44
646	1A	Bockman Creek	Clallam		2902375	0	0.8
648	1A	Bockman Creek	Clallam		2903000	0	6.8
1033	2	Bockman Creek	Clallam		2903025	0	0.5
1034	2	Bockman Creek	Clallam		2903035	0	0.5
1035	2	Bockman Creek	Clallam		2903040	0	1
1036	2	Bockman Creek	Clallam		2903045	0	0.3
1037	2	Bockman Creek	Clallam		2903050	0	0.7
177	2	Upper Sol Duc River	Clallam		2918000	0	4.1
54	1A	Headwaters Sol Duc River	Clallam		2918000	4.1	8.9
412	2	Headwaters Sol Duc River	Clallam		2918000	8.9	14.5
413	2	Headwaters Sol Duc River	Clallam		2918100	0	3.3
414	2	Headwaters Sol Duc River	Clallam		2918110	0	0.8
55	1A	Headwaters Sol Duc River	Clallam		2920000	0	6
52	2	Headwaters Sol Duc River	Clallam		2920020	0	1.4
900	2	South Fork Calawah	Clallam		2922000	7	12.6
154	1A	South Fork Calawah	Clallam	Rain 2 KV project	2923000	0	9
140	1A	North Fork Calawah River	Clallam		2923000	9	13.7
749	1A	South Fork Calawah	Clallam	Rain 2 KV project	2923015	0	2.7
750	1A	South Fork Calawah	Clallam	Rain 2 KV project	2923020	0	0.6
141	1A	North Fork Calawah River	Clallam		2923060	0	2.3
994	1A	North Fork Calawah River	Clallam		2923060	0	2.3
142	1A	North Fork Calawah River	Clallam		2923070	0	2.3
133	1A	North Fork Calawah River	Clallam	Grindstone Pit	2923070	0.1	0.1
637	1A	Middle Sol Duc River	Clallam		2923070	2.3	5.2
127	1A	Middle Sol Duc River	Clallam		2923090	0	1.2
121	1A	Middle Sol Duc River	Clallam		2923100	0	1.5
1015	2	Middle Sol Duc River	Clallam	Eagle Springs	2923100		
613	1A	Upper Sol Duc River	Clallam		2929000	0	3
178	2	Upper Sol Duc River	Clallam		2929000	7.6	11
170	2	Upper Sol Duc River	Clallam		2929070	0	3.3
179	2	Upper Sol Duc River	Clallam		2931000	0	2.7
168	1A	Upper Sol Duc River	Clallam	Tom Creek Pit	2931000	0.2	0.2
56	2	Headwaters Sol Duc River	Clallam		2931000	2.7	11.9
53	1A	Headwaters Sol Duc River	Clallam	Upper Tom Quarry	2931000	7.4	7.4
155	1A	South Fork Calawah	Clallam		2932000	0	3.7
157	2	South Fork Calawah	Clallam	Elk Quarry	2932000	2.7	2.7
206	2	Lower Bogachiel River	Clallam	Undi Road	2932000	9.8	11.8
1012	2	Lower Bogachiel River	Jefferson	Bogachiel Rainforest Trail #825	2932000		
1013	2	Lower Bogachiel River	Clallam	Bogachiel Rainforest Wetland Trail #825.1	2932000		
1014	2	Lower Bogachiel River	Jefferson	Morganroth Homestead Trail #825.2	2932000		

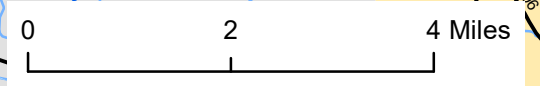
Ref #	2022 Priority	6th Field Watershed Name	Watershed County	Site Name	Road #	BMP	EMP
965	2	Calawah River	Clallam		2932030	0	1.5
700	1A	Upper Sol Duc River	Clallam		2978000	0	3
952	2	Upper Sol Duc River	Clallam		2978011	0	0.4
953	1A	Upper Sol Duc River	Clallam		2978015	0	1.4
954	1A	Upper Sol Duc River	Clallam		2978025	0	1.1
955	2	Upper Sol Duc River	Clallam		2978030	0	1
956	2	Upper Sol Duc River	Clallam		2978035	0	0.2
957	2	Upper Sol Duc River	Clallam		2978040	0	0.4
958	2	Upper Sol Duc River	Clallam		2978045	0	1.6
959	2	Upper Sol Duc River	Clallam		2978085	0	1.1
116	2	Middle Sol Duc River	Clallam		3000000	0	7.4
47	2	Deep Creek	Clallam		3000000	7.4	9.1
187	2	West Twin River	Clallam		3000000	9	16
126	2	Middle Sol Duc River	Clallam		3000200	0	2.1
143	2	Pysht River	Clallam		3000200	2.1	3.3
43	2	Deep Creek	Clallam		3000200	3.3	8.46
144	2	Pysht River	Clallam		3000215	0	0.6
44	2	Deep Creek	Clallam		3000250	0	3.8
145	2	Pysht River	Clallam		3000250	3.8	6.9
122	1A	Middle Sol Duc River	Clallam		3006000	0	7.8
129	2	Middle Sol Duc River	Clallam		3006011	0	1.3
643	2	Pysht River	Clallam		3006300	0	4.1
49	2	East Twin River	Clallam		3040000	2.1	7.3
193	2	West Twin River	Clallam		3040000	7.3	10.7
48	2	Deep Creek	Clallam		3040000	10.7	14.3
119	1A	Middle Sol Duc River	Clallam		3040000	14.3	21
118	1A	Middle Sol Duc River	Clallam	Snider Work Center	3040800		
50	1A	East Twin River	Clallam		3068000	0	5.6
612	2	Upper Sol Duc River	Clallam	Mt. Muller TH gravel pile	3071000	0.3	0.3
173	2	Upper Sol Duc River	Clallam	Littleton Horse Camp gravel pit	3071000		
123	2	Middle Sol Duc River	Clallam		3100300	0	1.95
638	1A	Pysht River	Clallam		3100300	1.9	5.8
642	2	Middle Sol Duc River	Clallam		3100400	0	1
641	2	Pysht River	Clallam		3100400	1	2.8
663	2	Middle Sol Duc River	Clallam		3100700	0	3.3
124	1A	Middle Sol Duc River	Clallam		3116000	0	3.45
639	1A	Pysht River	Clallam		3116000	3.5	5
640	2	Pysht River	Clallam		3116200	0	2.2
988	1A	Upper Sol Duc River	Clallam	Mt. Mueller Trail # 882			
989	2	Upper Sol Duc River	Clallam	Snider Ridge Trail # 882.2			
1026	2	Big Creek/Upper Quinault River	Jefferson	Alder Creek side channel			
1029	1A	Upper Sol Duc River	Clallam	Jasmine Meadow			

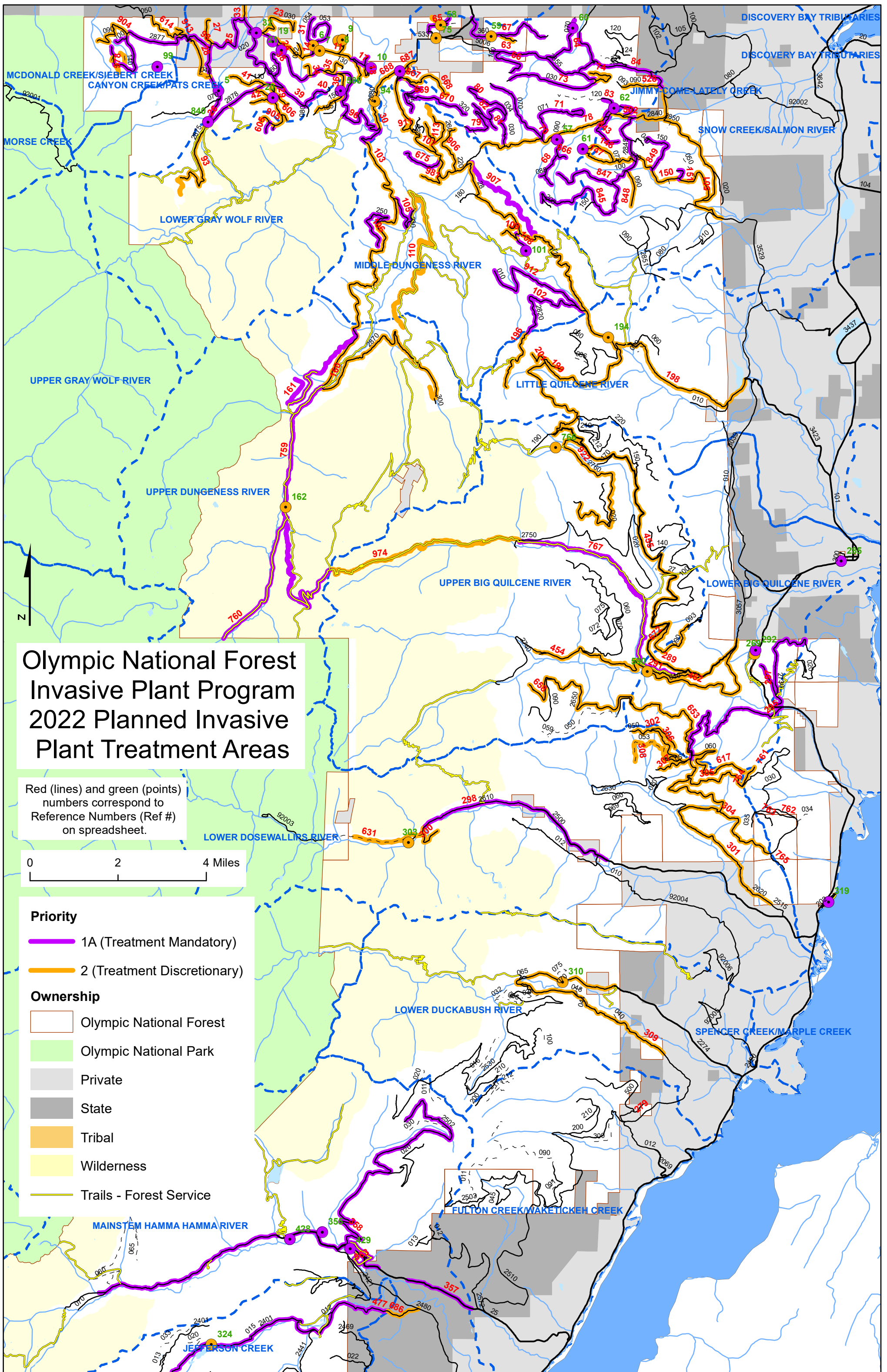
Olympic National Forest Invasive Plant Program 2022 Planned Invasive Plant Treatment Areas



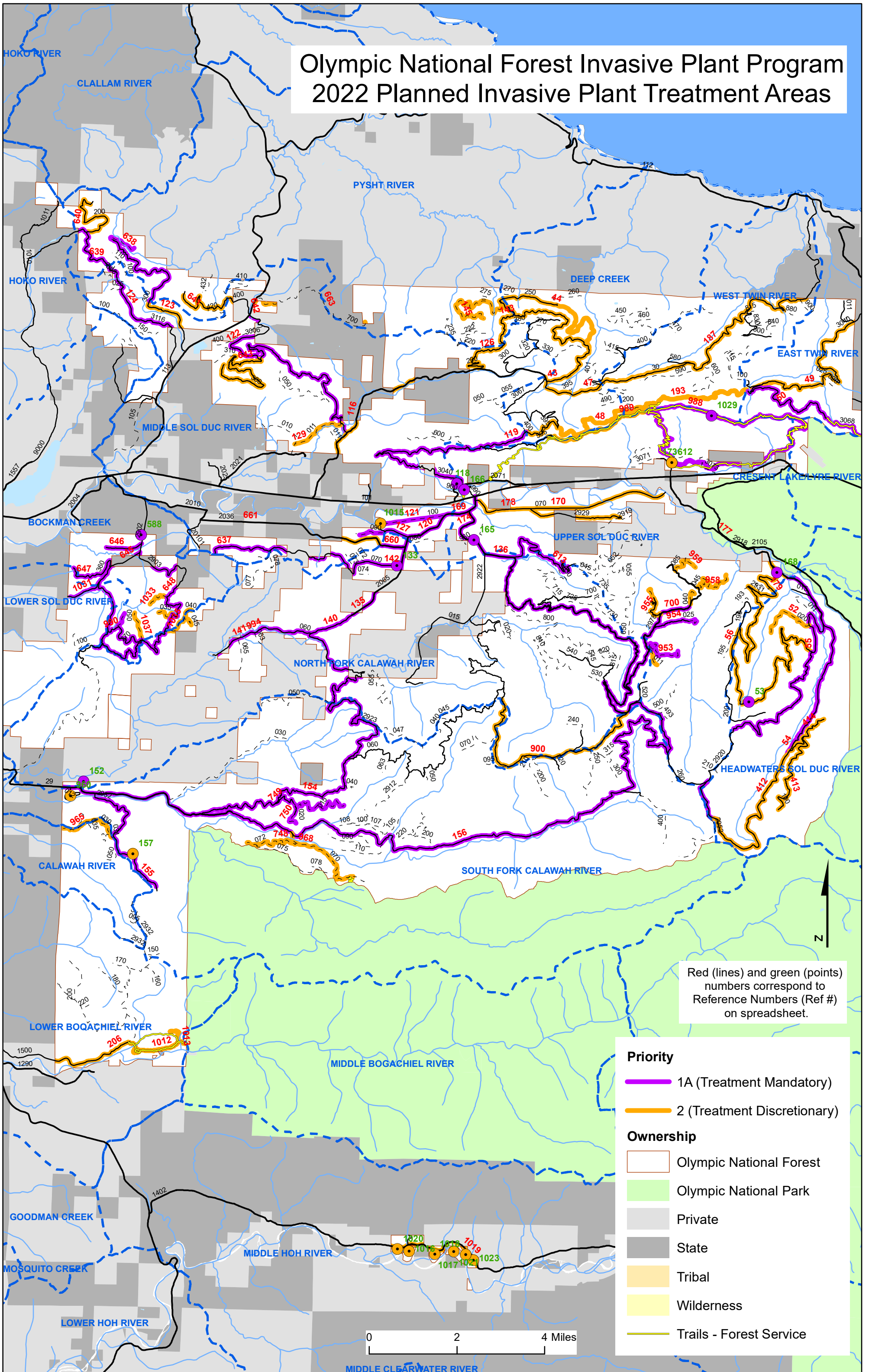
Red (lines) and green (points) numbers correspond to Reference Numbers (Ref #) on spreadsheet.

- Priority**
- 1A (Treatment Mandatory)
 - 2 (Treatment Discretionary)
- Ownership**
- Olympic National Forest
 - Olympic National Park
 - Private
 - State
 - Tribal
 - Wilderness
 - Trails - Forest Service





Olympic National Forest Invasive Plant Program 2022 Planned Invasive Plant Treatment Areas



Red (lines) and green (points) numbers correspond to Reference Numbers (Ref #) on spreadsheet.

Priority

- 1A (Treatment Mandatory)
- 2 (Treatment Discretionary)

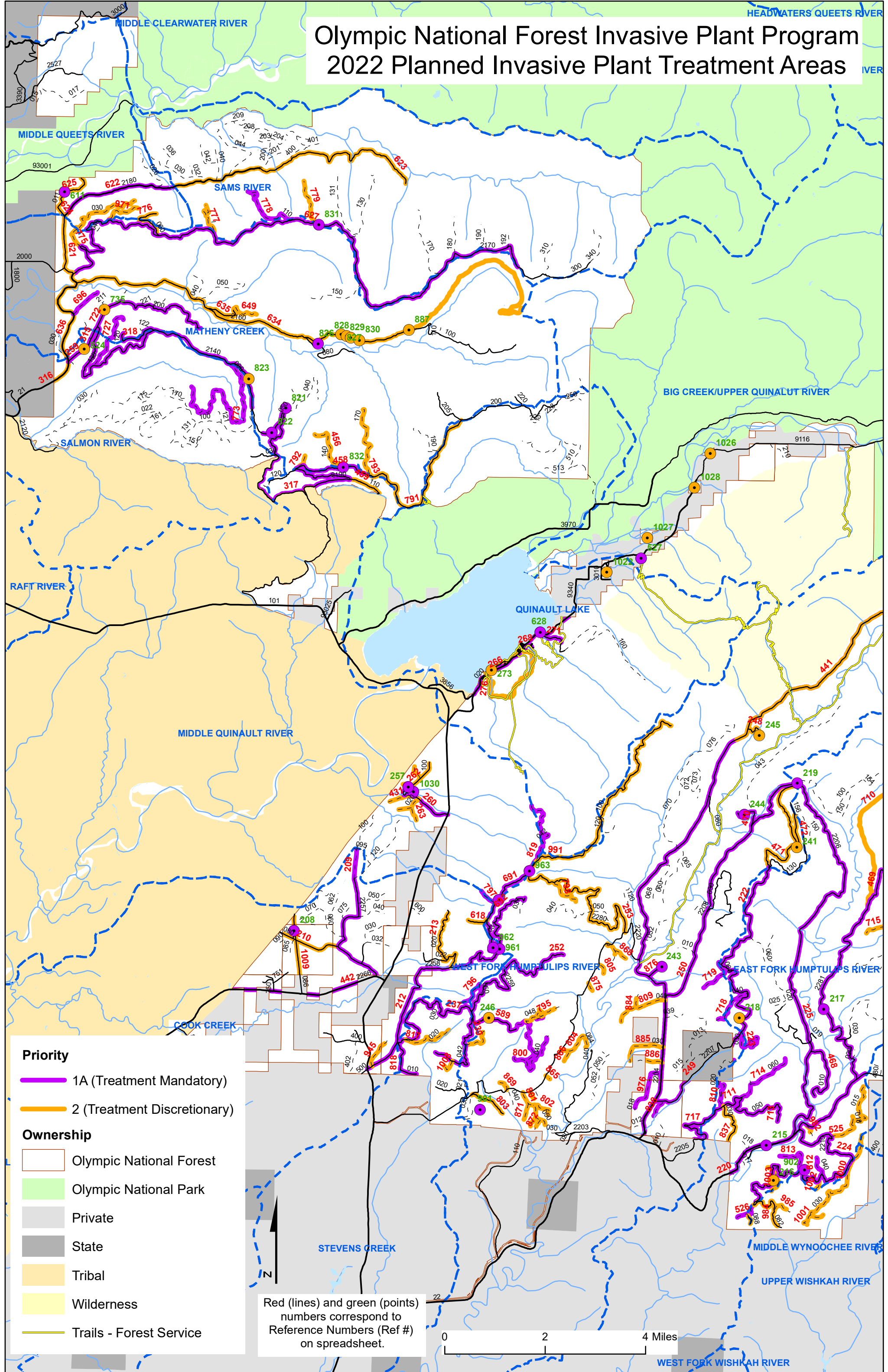
Ownership

- Olympic National Forest
- Olympic National Park
- Private
- State
- Tribal
- Wilderness
- Trails - Forest Service

0 2 4 Miles

Olympic National Forest Invasive Plant Program

2022 Planned Invasive Plant Treatment Areas



- Priority**
- 1A (Treatment Mandatory)
 - 2 (Treatment Discretionary)
- Ownership**
- Olympic National Forest
 - Olympic National Park
 - Private
 - State
 - Tribal
 - Wilderness
 - Trails - Forest Service

Red (lines) and green (points) numbers correspond to Reference Numbers (Ref #) on spreadsheet.

0 2 4 Miles